



**Maricopa County**  
Criminal Justice System

**Monthly Performance Report for March 2006**

Monthly Averages						
	FY 2002	FY 2003	FY 2004	FY 2005	FY 2006	Mar. 2006
<b>Sheriff's Office</b>						
Bookings	9,641	9,875	10,176	9,975	10,338	<b>10,711</b>
Average Daily Population	7,557	8,044	8,657	9,054	9,816	<b>9,571</b>
Avg Length of Stay (in days)	23.8	24.4	26.0	27.7	29.0	<b>27.7</b>
<b>Superior Court</b>						
Filings	2,515	2,904	3,062	2,996	3,197	<b>3,682</b>
Terminations	2,367	2,330	2,612	2,758	2,906	<b>3,358</b>
Clearance Rate	94%	80%	85%	93.0%	91.2%	<b>91.2%</b>
Active Pending Inventory	7,419	8,123	9,106	10,002	10,928	<b>10,612</b>
Trials Completed	61	59	42	51	65	<b>76</b>
Trial Rate	2.4%	2%	1.4%	1.7%	2.1%	<b>2.1%</b>
<b>Adult Probation</b>						
Pretrial General Supervision	609	700	990	978	784	<b>755</b>
Pretrial Intensive Supervision	356	331	657	816	1,077	<b>1,174</b>
Pretrial Electronic Monitoring	78	97	153	164	185	<b>209</b>
Standard Probation Supervision	24,448	25,400	23,957	26,091	27,547	<b>28,557</b>
Intensive Probation Supervision	1,564	1,267	1,079	1,456	1,330	<b>1,282</b>
<b>Juvenile Detention and Probation</b>						
Avg Daily Detention Pop	407	401	431	443	425	<b>470</b>
Avg Length of Stay (in days)	14.7	15.1	16.6	18.7	18.0	<b>19.0</b>
Standard Prob.	4,726	4,387	4,232	4,108	4,022	<b>4,010</b>
Intensive Prob.	666	659	518	547	530	<b>499</b>

A criminal justice system-wide goal is to enhance the utility and timeliness of management information on case processing, in an effort to help agencies effectively address current events. An interagency committee of McJustice meets regularly to accomplish this and develop this report. **Input from readers is welcomed.** Please contact Amy Rex at [rexa@mail.maricopa.gov](mailto:rexa@mail.maricopa.gov) or 602-506-1310.

**Criminal Justice System News**

**Adult Incarceration:** Bookings increased from 9,755 (February) to 10,711 (March). The ADP decreased from 9,692 to 9,571. Pretrial and agency hold populations decreased slightly; pretrial from 6,196 to 6,082 and holds from 531 to 522. Pretrial was at its lowest level since June 2005. The sentenced population was virtually unchanged, from 2,902 to 2,906. The overall ALOS was nearly the same, 27.8 versus 27.7 days.

The Average Length of Stay increased for agency holds, from 78.6 days to 80.4 days. ALOS for pretrial and sentenced populations decreased, pretrial from 9.3 to 7.2 days and sentenced from 33.7 to 33.3 days. Breaking down the pretrial population, felony ALOS decreased from 15.2 days to 10.6 days (the lowest since August 2005), while misdemeanor ALOS remained the same at 3.2 days.

**Filings & Case Processing:** Criminal filings and terminations both increased from February to March: filings from 3,087 to 3,682 and terminations from 2,840 to 3,358. The termination rate was 91.2%. The active pending case inventory decreased from 10,732 to 10,612. This is the lowest rate since June 2005 (10,603). Filings into the RCC and EDC increased. RCC numbers went from February's 1,724 to March's 2,019 (highest since August 2005 – 2,130), while EDC went from 955 to 1,181 (highest since May 2005 – 1,194). Grand Jury indictments (not including notices of supervening indictments, non-EDC direct complaints, and juvenile direct complaints) increased from 372 to 438.

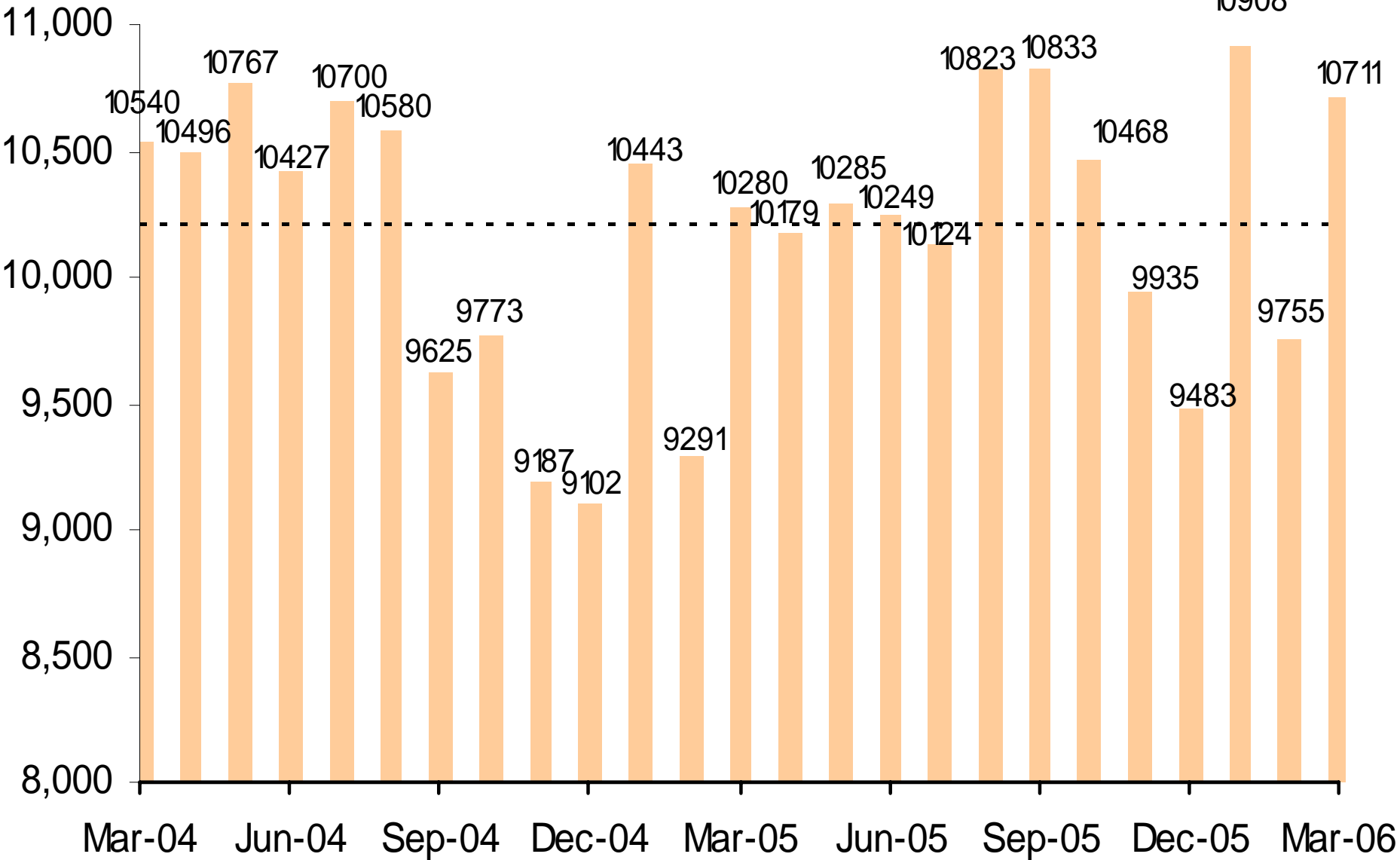
**Adult Probation:** Levels of pretrial general supervision and electronic monitoring increased slightly: pretrial from 747 to 755, and EM from 197 to 209. Levels of pretrial intensive supervision decreased slightly from 1,211 to 1,174.

Levels of standard probation supervision increased from February (28,230) to March (28,557); this is the highest number ever seen. Levels of intensive probation supervision decreased slightly from 1,286 to 1,282.

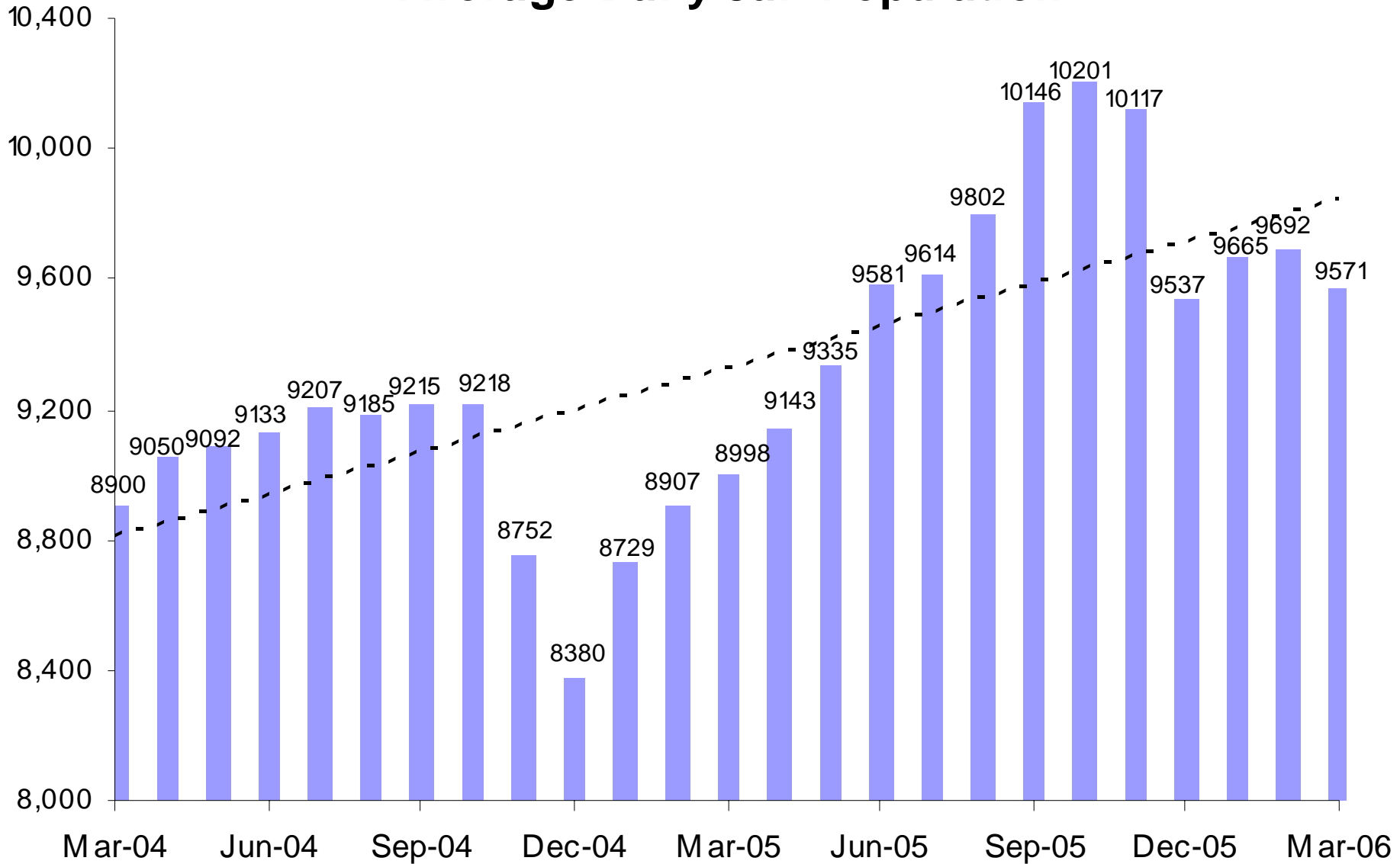
**Juvenile Detention and Probation:** The Average Daily Population increased from 423 (February) to 470 in March; this is the highest since April 2005 (481). ALOS increased two days from 17.0 to 19.0 days. Electronic monitoring increased from 90 to 98. Home detention increased 252 to 260.

Levels of juvenile standard and intensive probation increased slightly. Standard went from 3,937 to 4,010, while intensive went from 498 to 499.

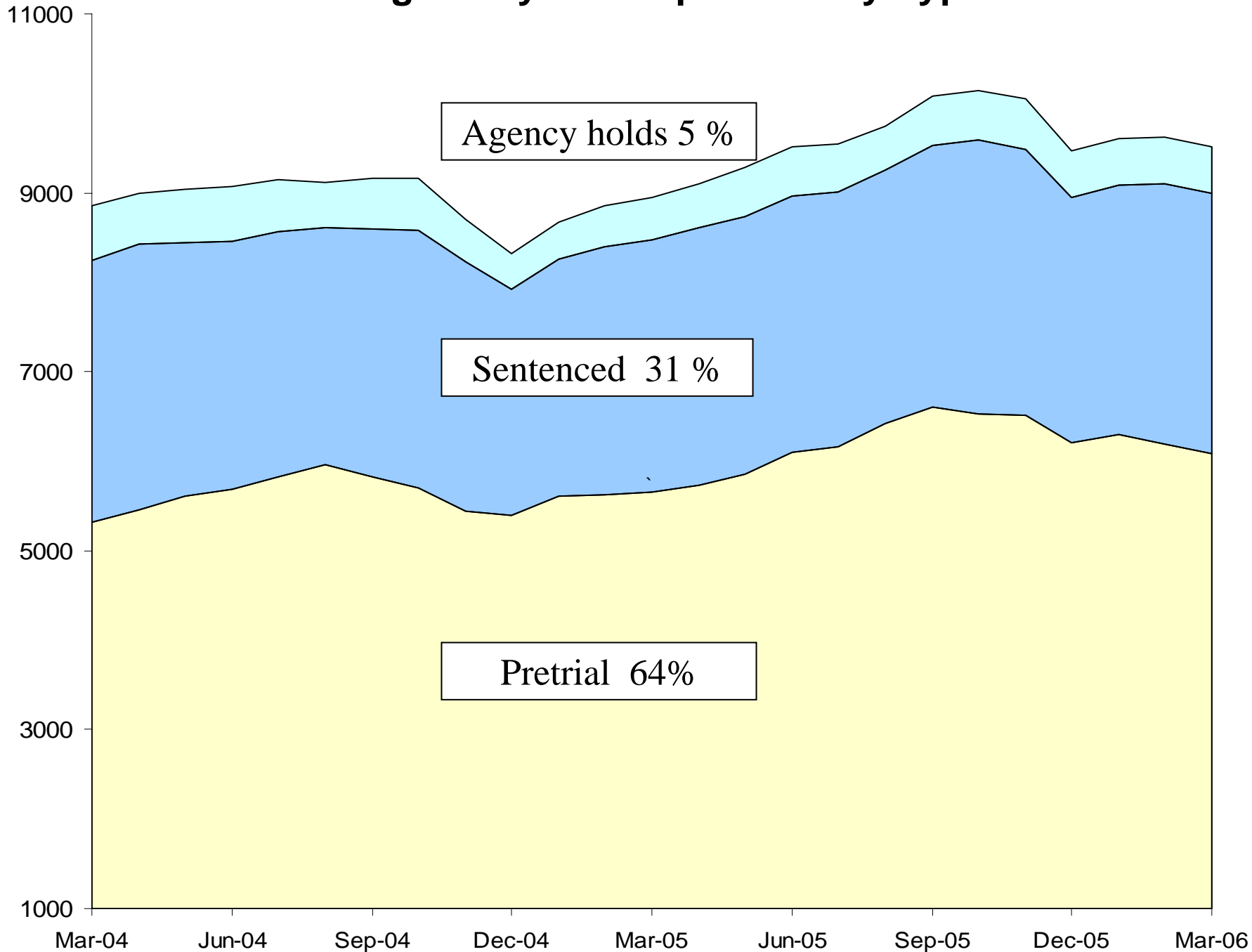
# Jail Bookings



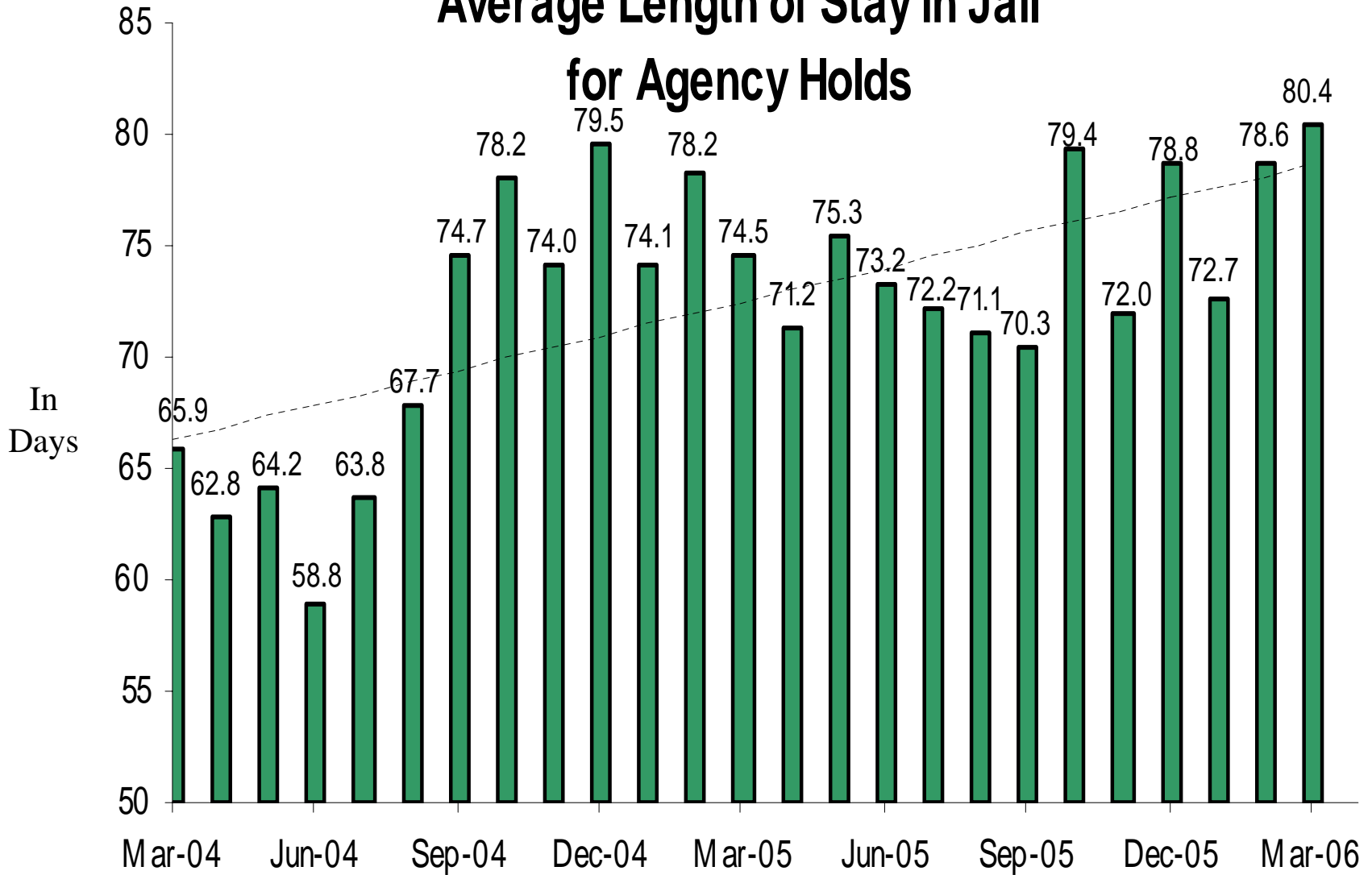
# Average Daily Jail Population



# Average Daily Jail Population by Type

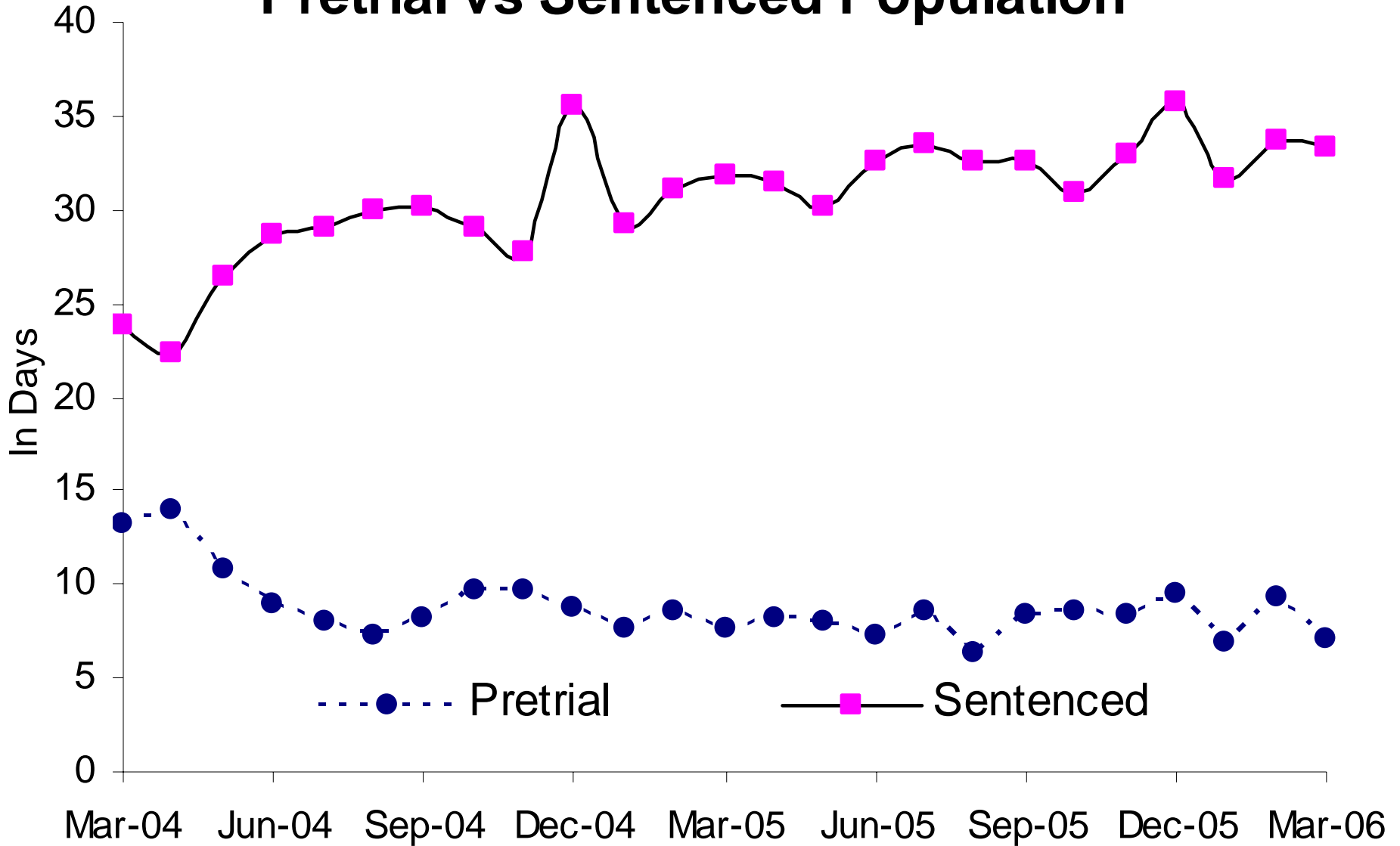


# Average Length of Stay in Jail for Agency Holds

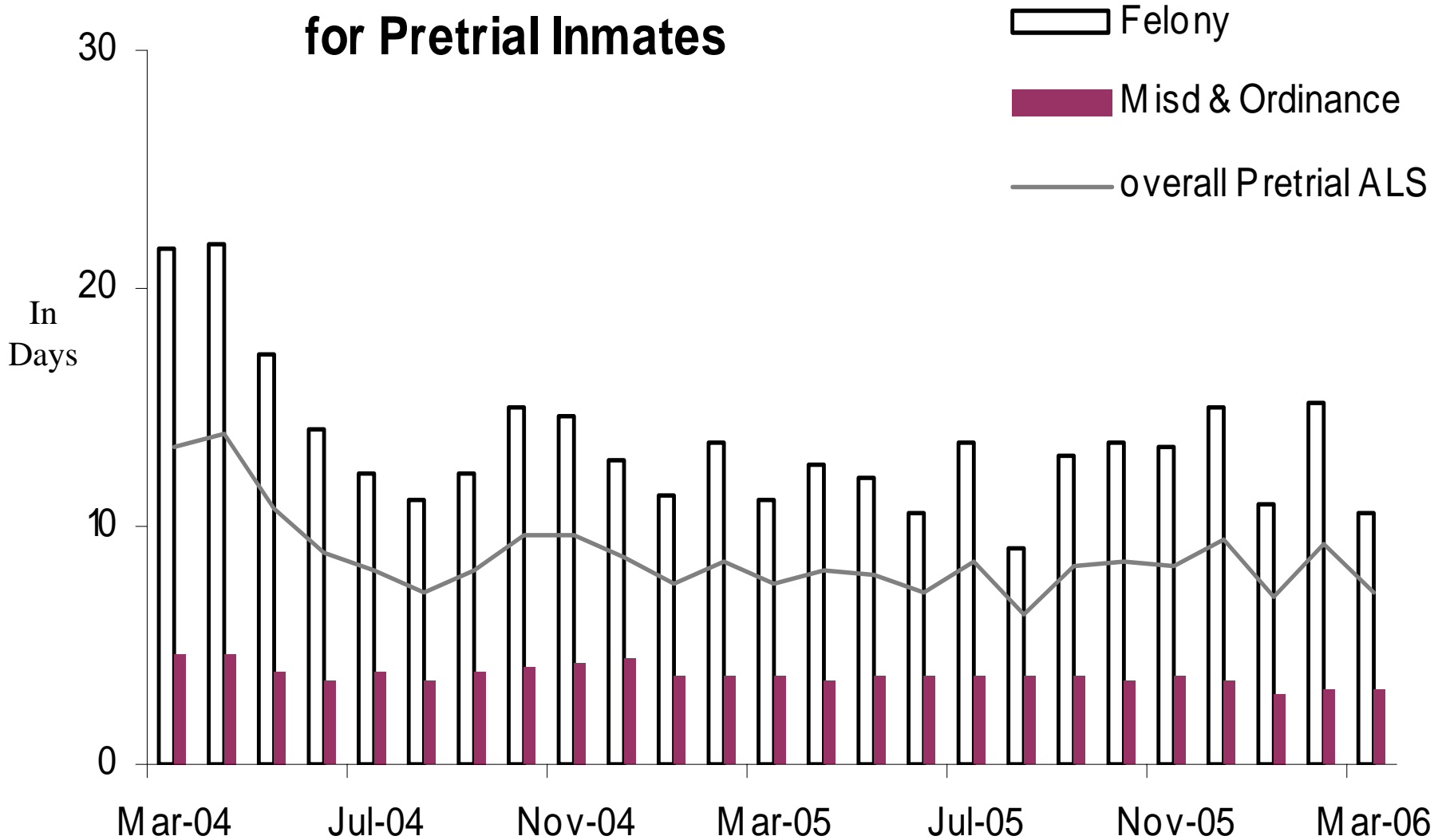


77% Dept of Corrections, 13% Federal agencies, 10% other

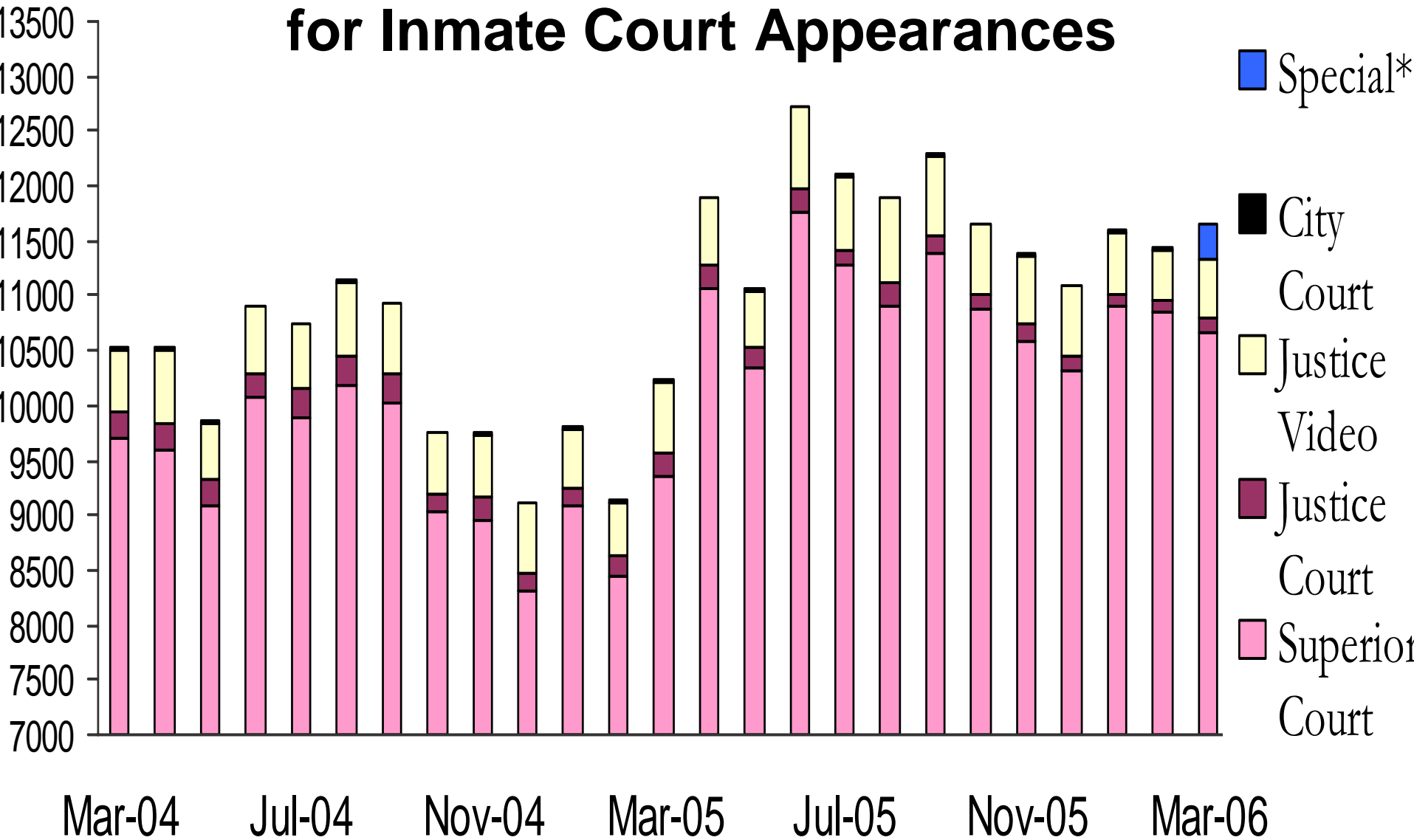
# Average Length of Stay in Jail Pretrial vs Sentenced Population



# Average Length of Stay in Jail for Pretrial Inmates



# Sheriff's Office Transports for Inmate Court Appearances

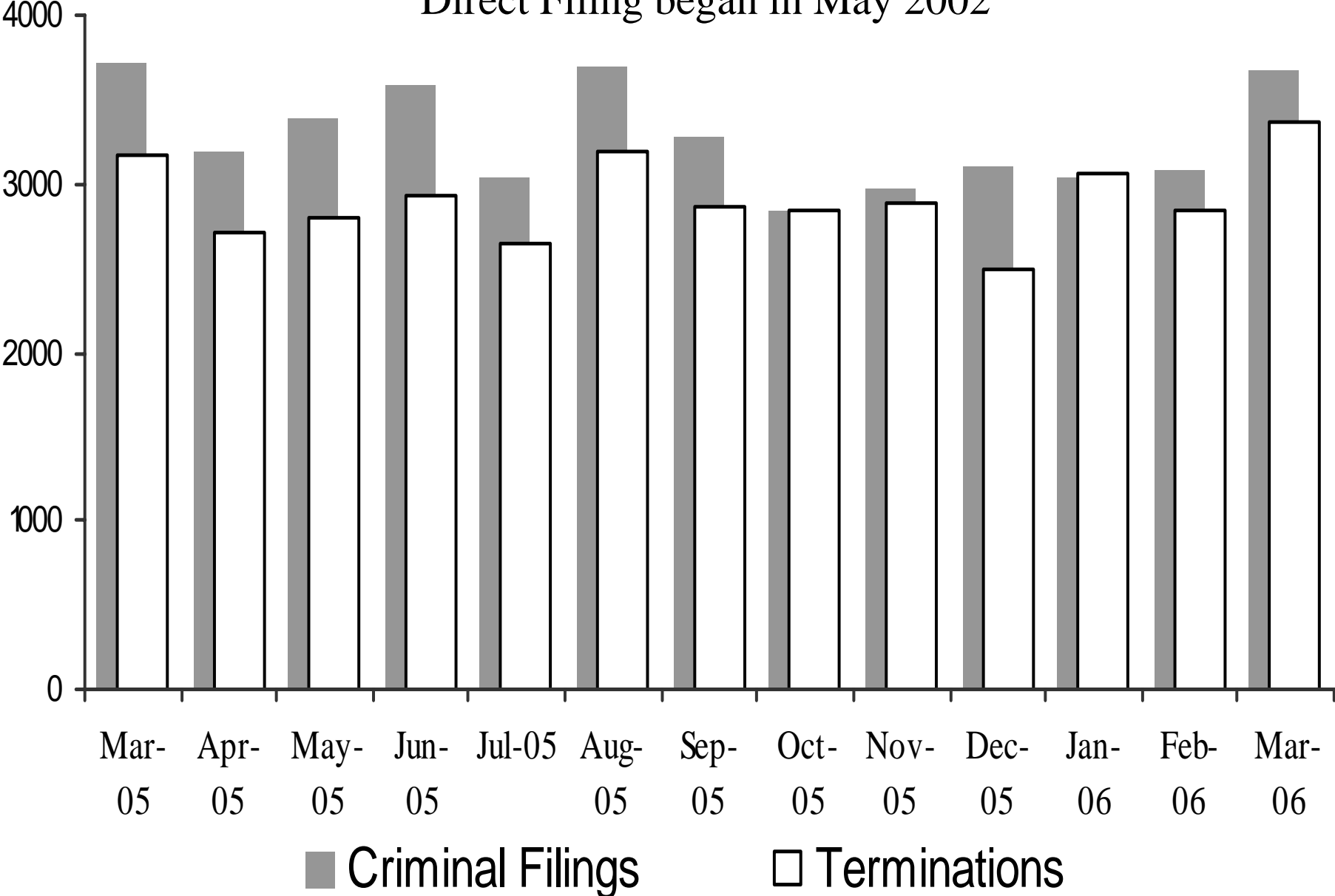


“Special” cases added in March 2006 include Downtown Remands, SEJD Remands, and SEJD Unscheduled.

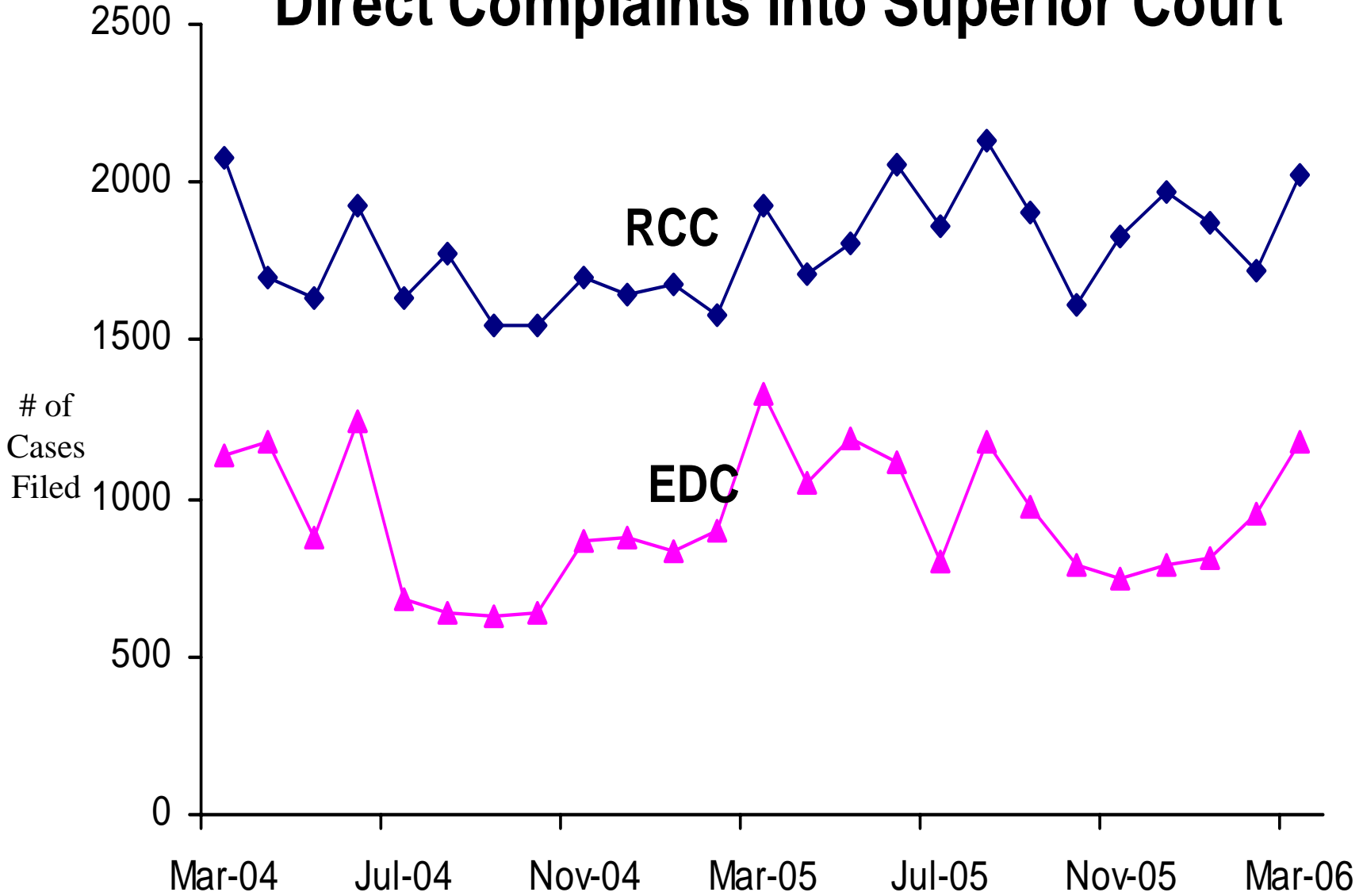


# Superior Court Filings and Terminations

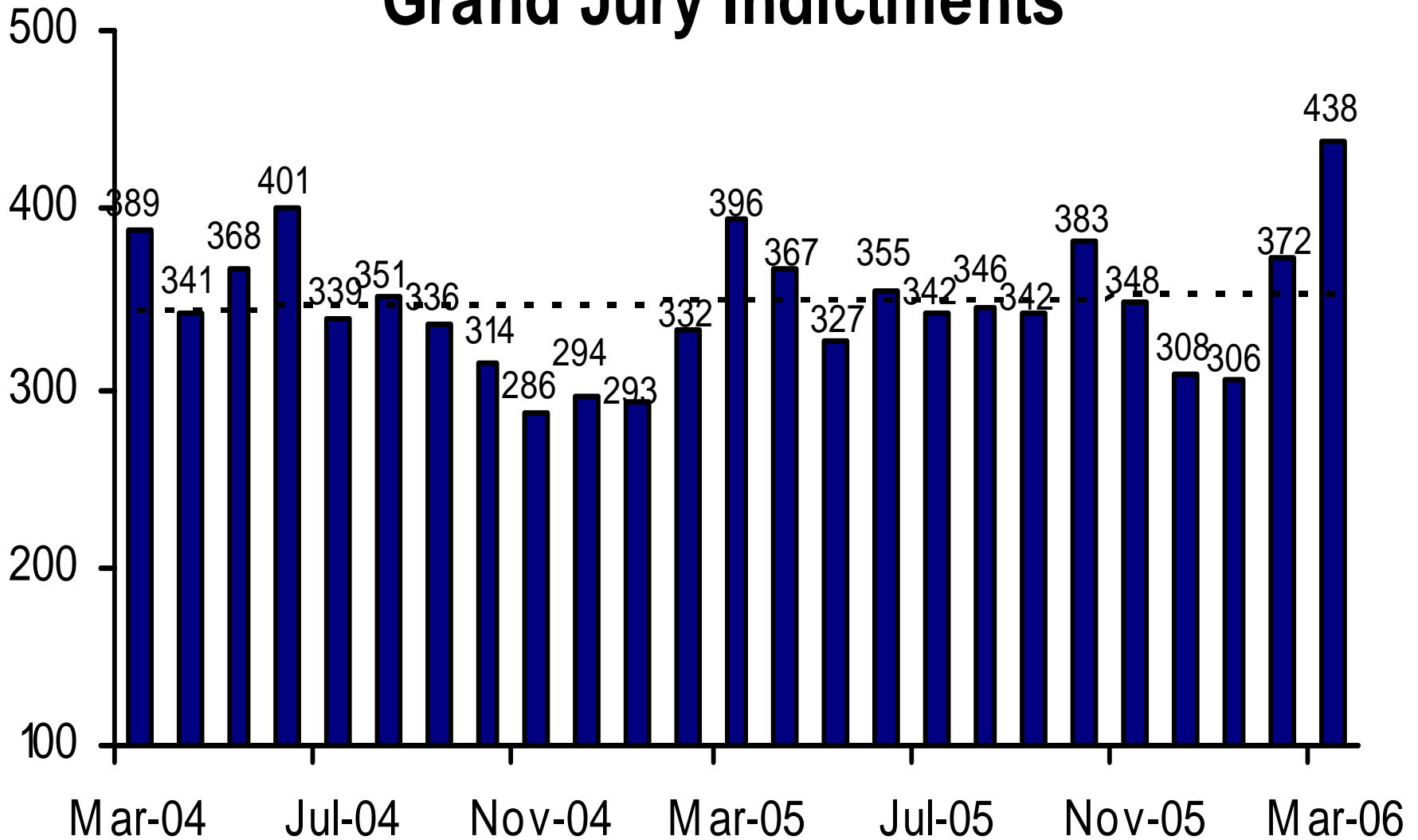
Direct Filing began in May 2002



# Direct Complaints into Superior Court

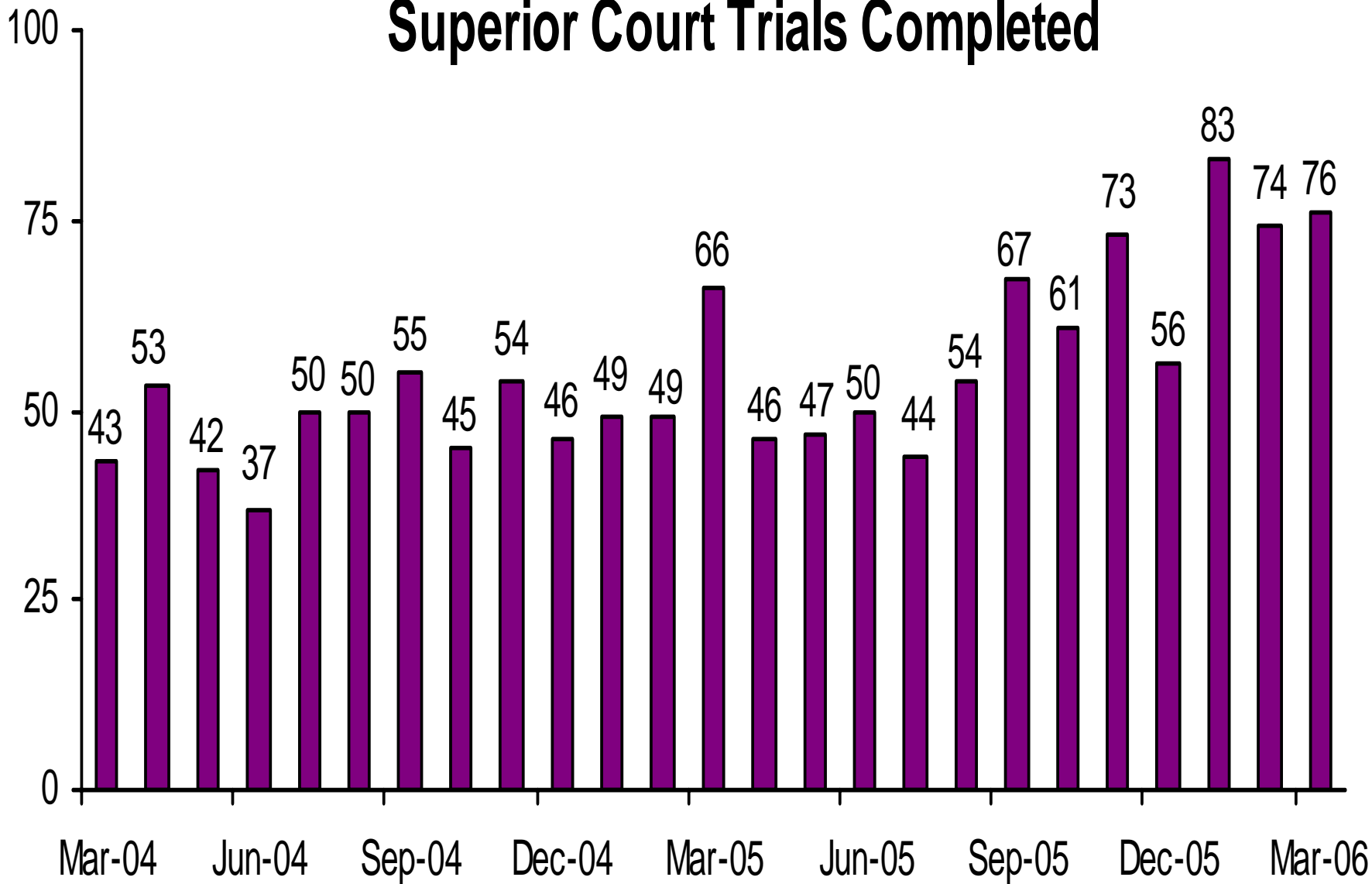


# Grand Jury Indictments

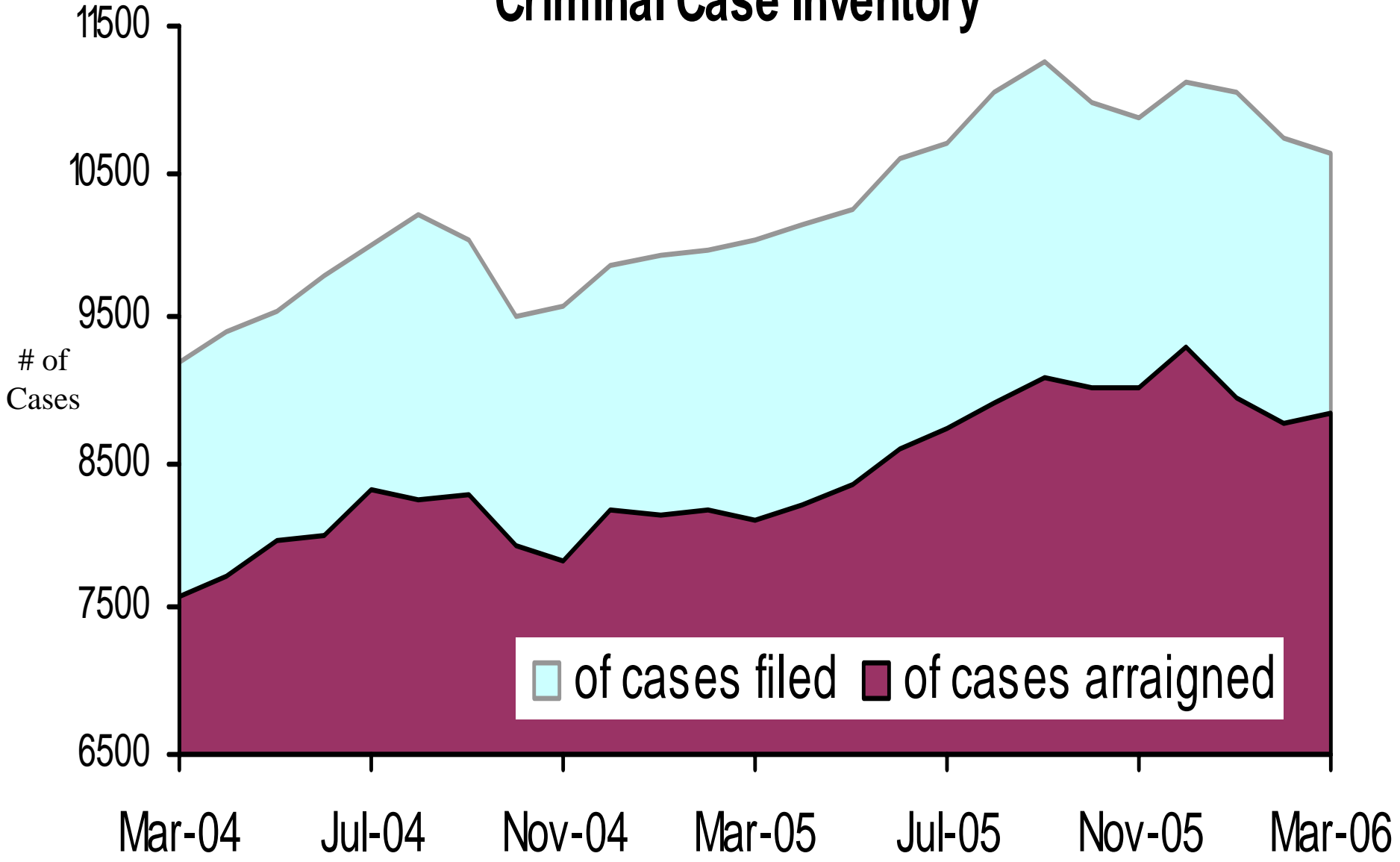


These numbers do not include notices of supervening indictments, non-EDC direct complaints, and juvenile direct complaints.

# Superior Court Trials Completed



# Active Pending Criminal Case Inventory

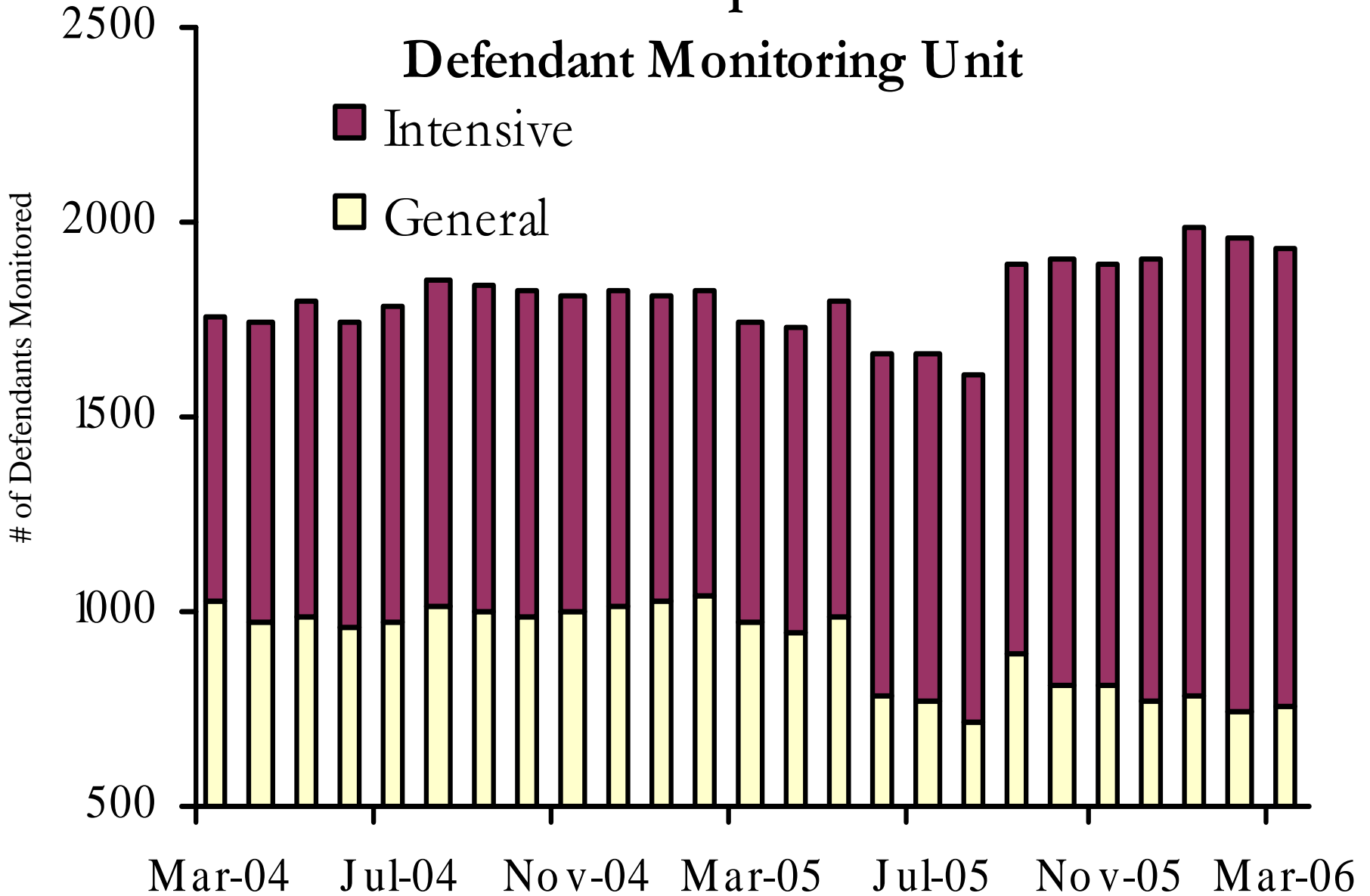


# Pretrial Supervision

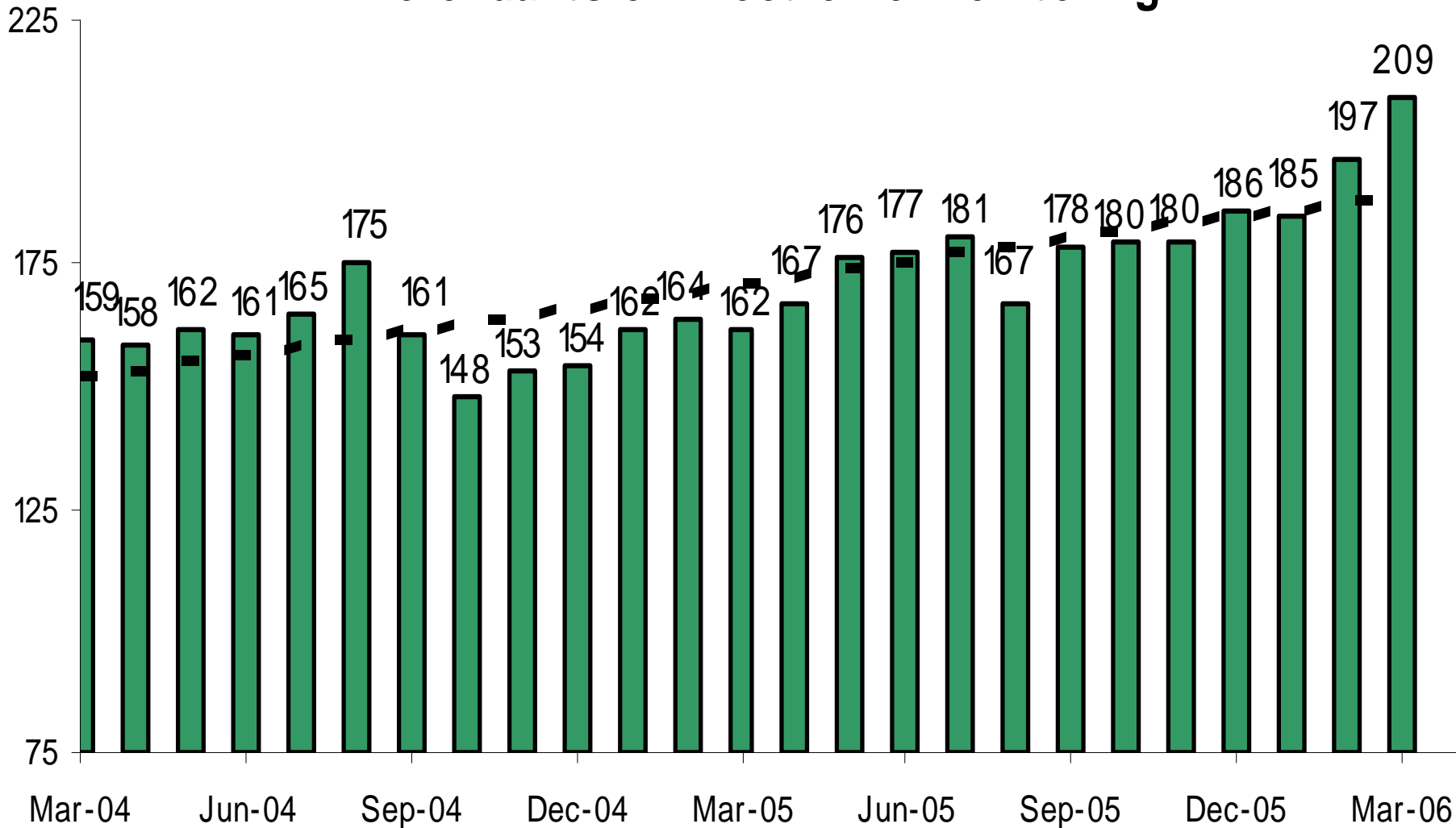
## Defendant Monitoring Unit

Intensive

General



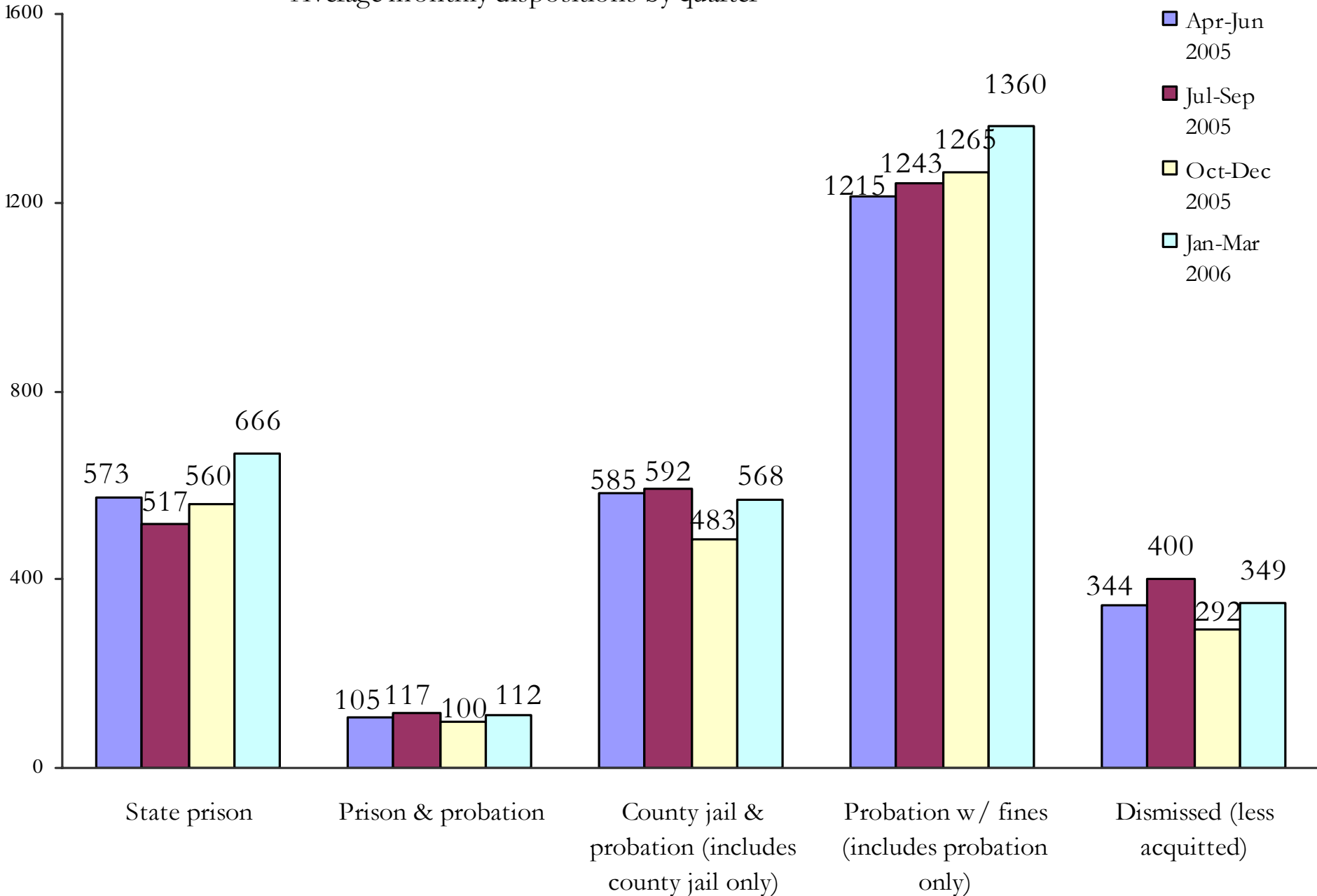
# Pretrial Supervision Defendants on Electronic Monitoring



# Disposition of Cases Terminated

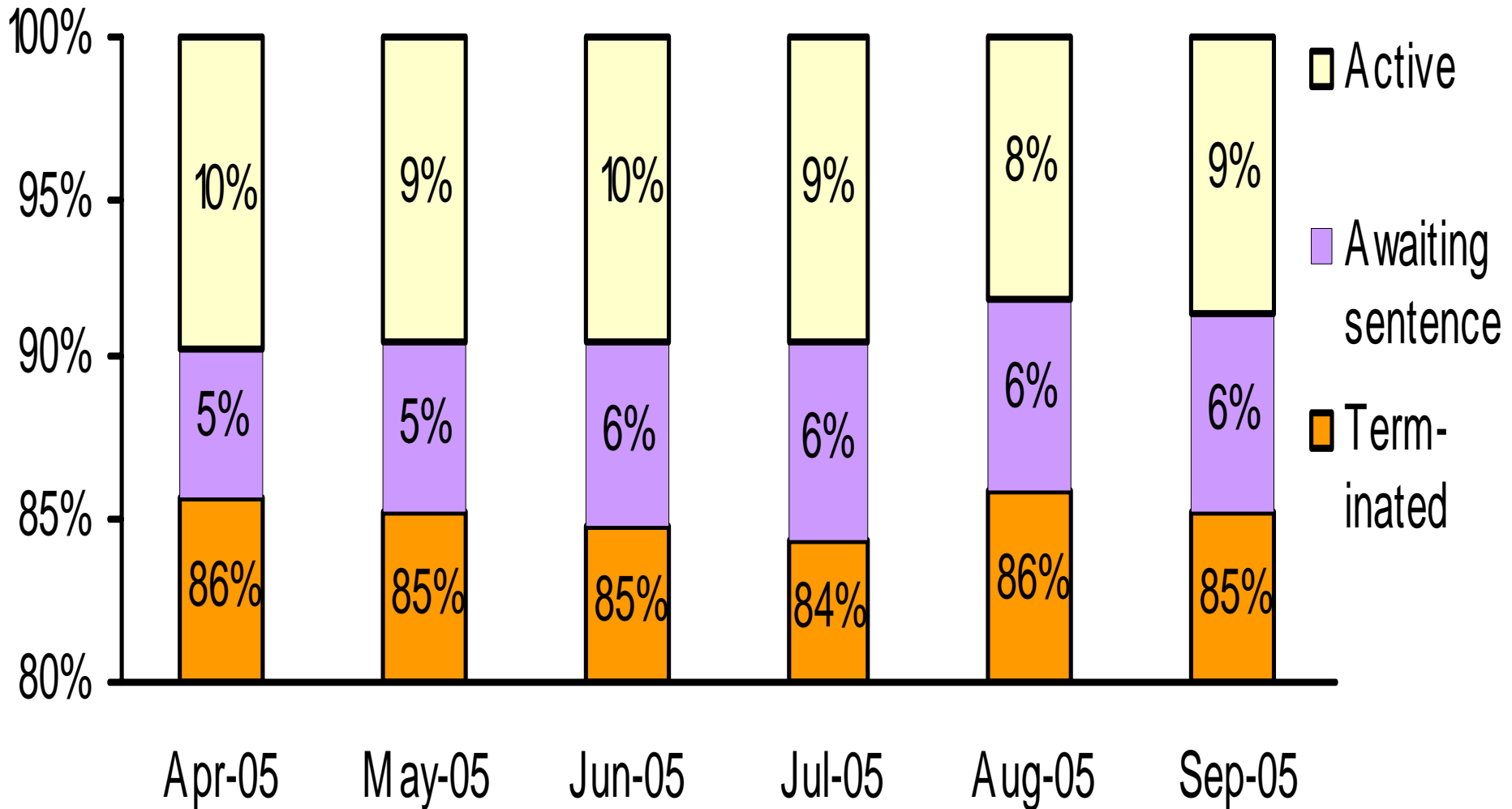
Average monthly dispositions by quarter

- Apr-Jun 2005
- Jul-Sep 2005
- Oct-Dec 2005
- Jan-Mar 2006

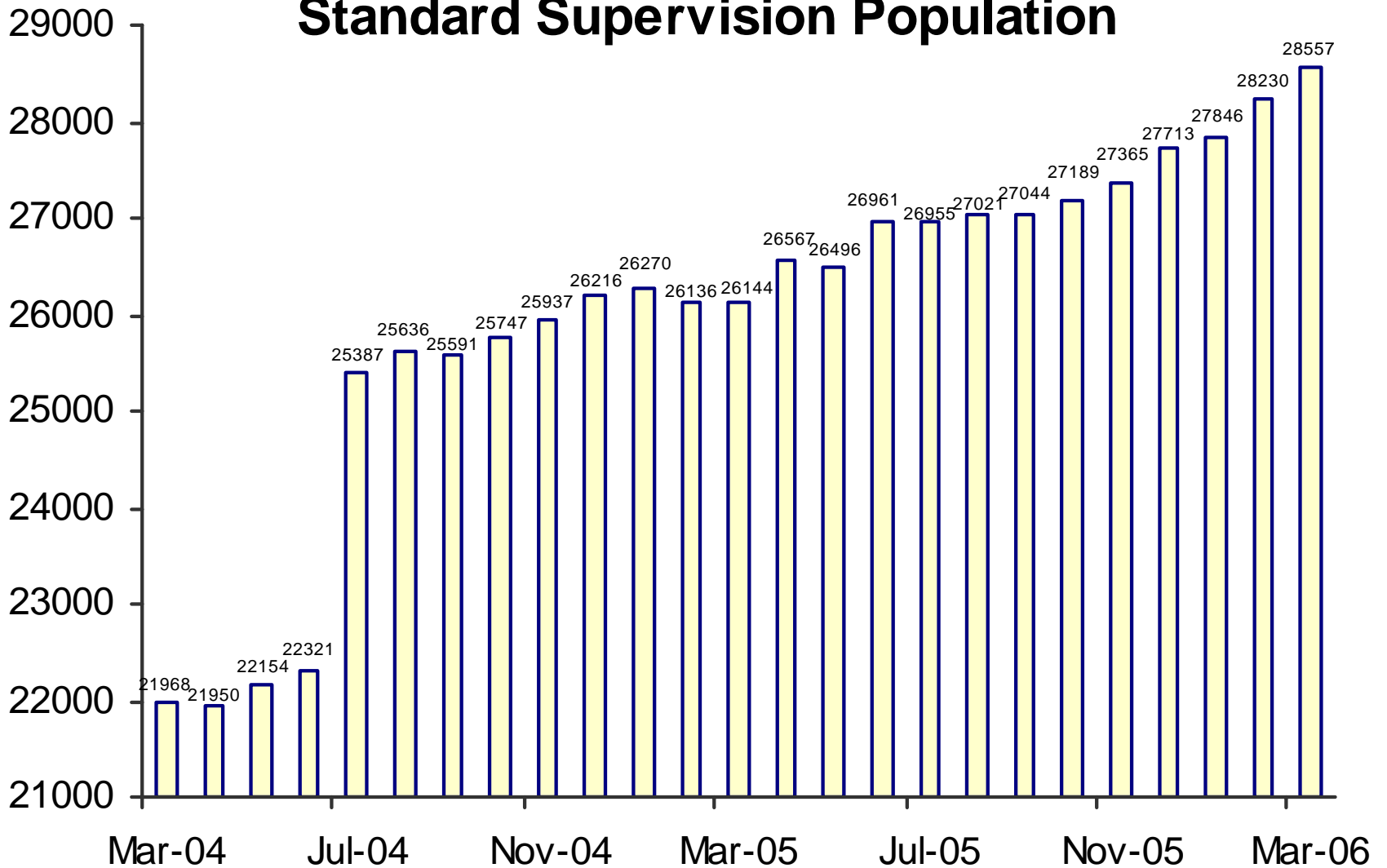




# Status of Cases After 180 Days

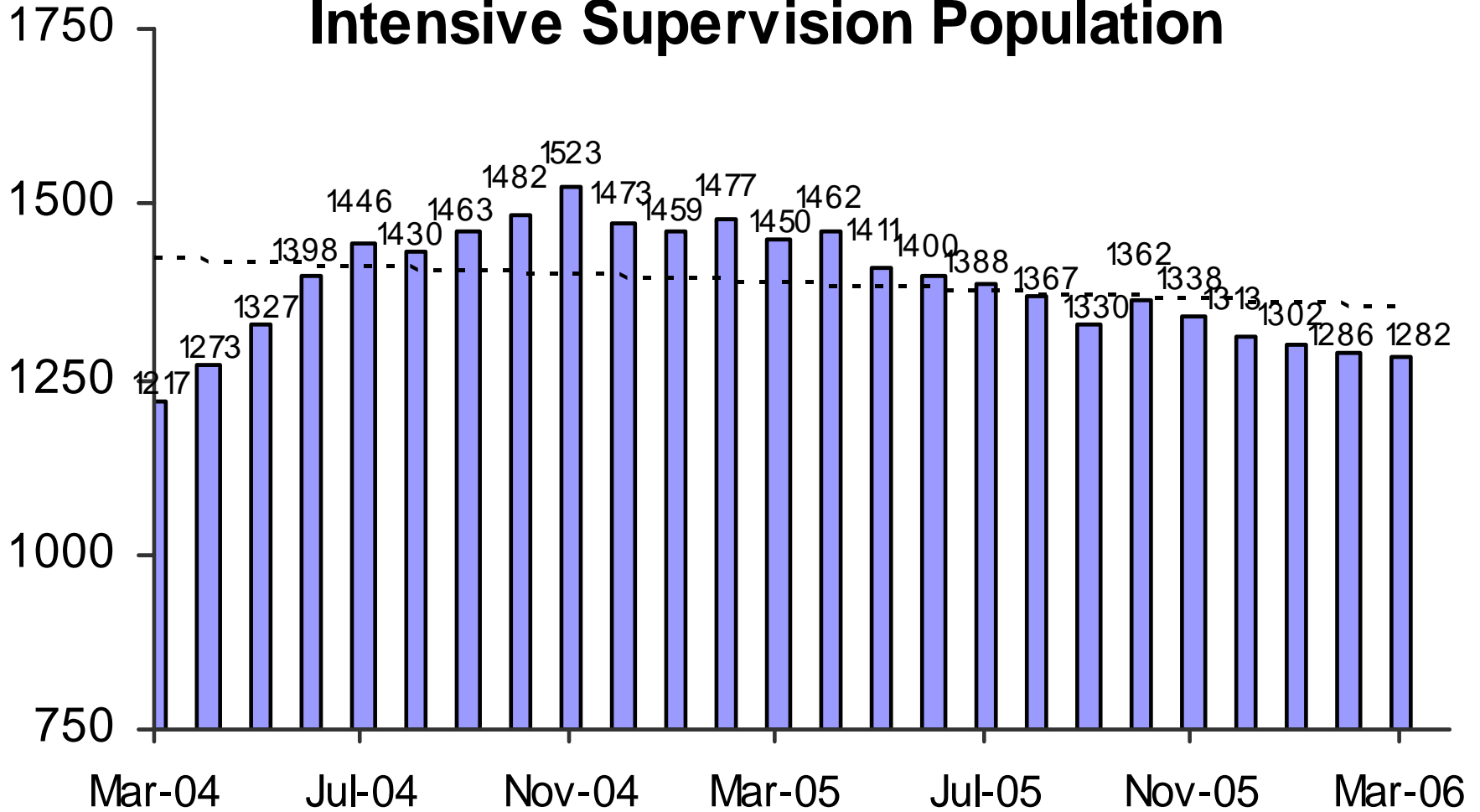


# Adult Probation Standard Supervision Population

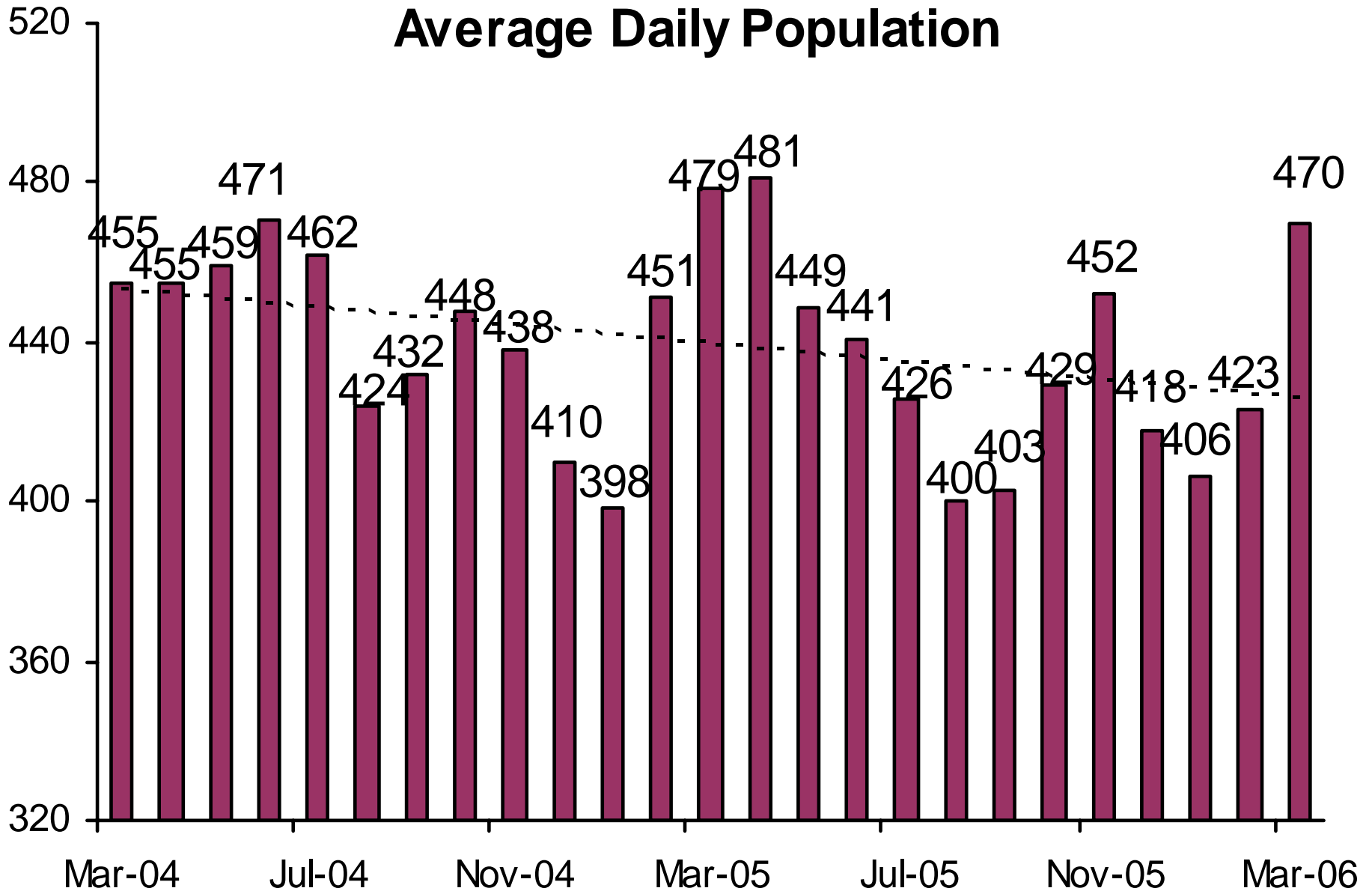


Interstate Compact and Report and Review caseloads are not included prior to July 2004. After July 2004, population as reported to the Board of Supervisors and JLBC is used.

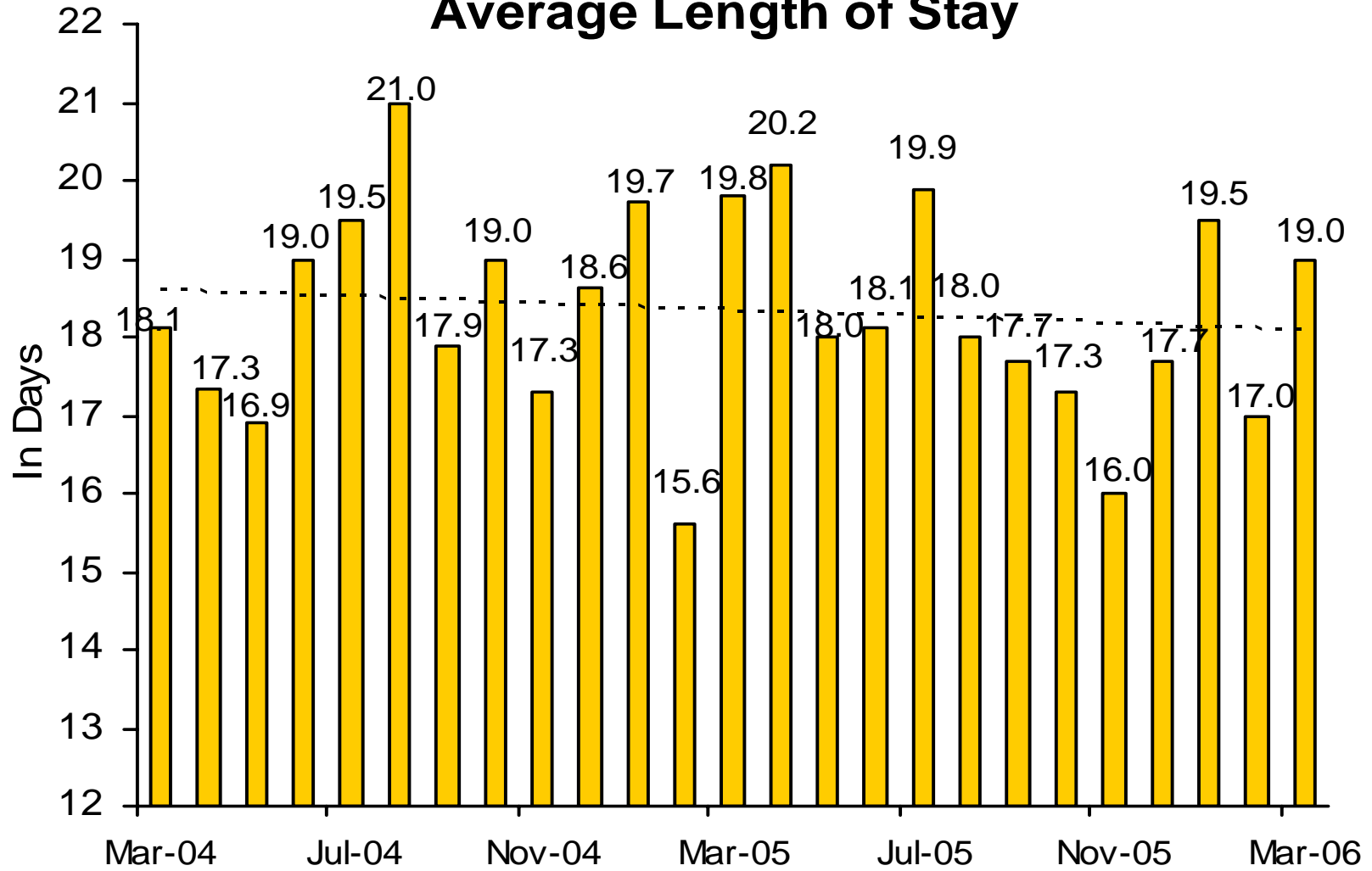
# Adult Probation Intensive Supervision Population



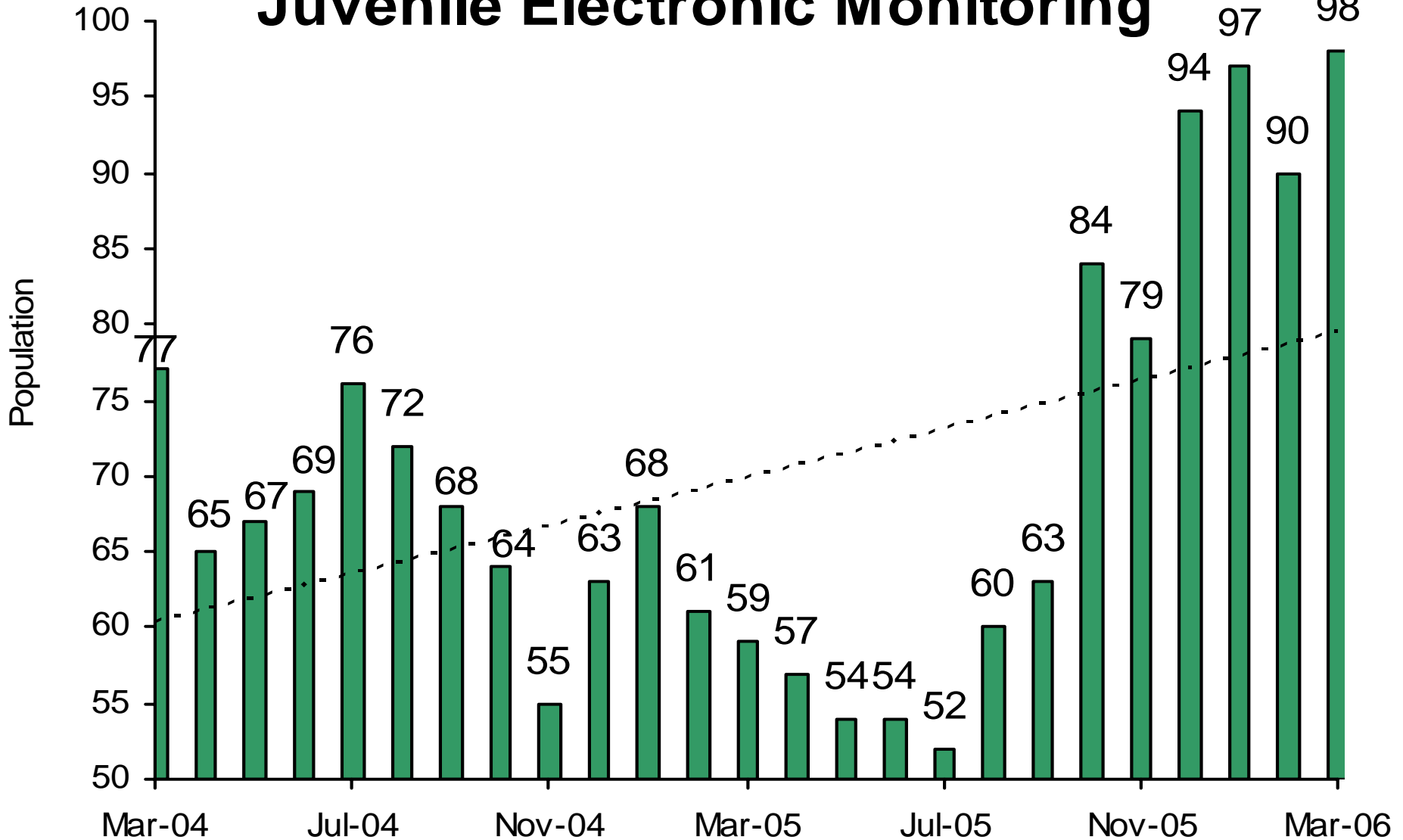
# Juvenile Detention Average Daily Population



# Juvenile Detention Average Length of Stay

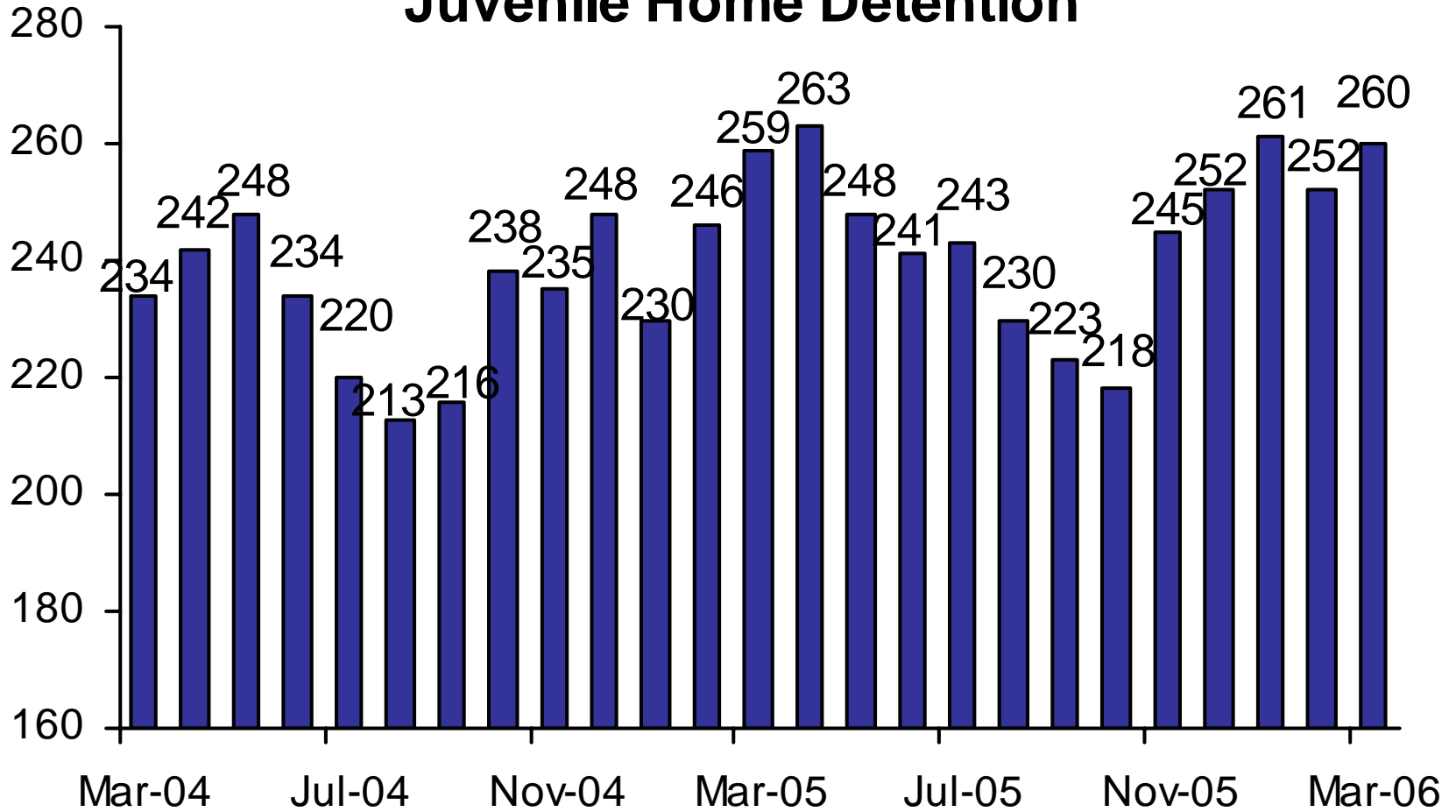


# Juvenile Electronic Monitoring



The increase beginning in October 2005 is due to more accurate data collection.

# Juvenile Home Detention



# Juvenile Probation

■ # on standard probation ■ # on intensive probation

