



Maricopa County

Criminal Justice System

Monthly Performance Report for March 2007

	Annual Averages				Year-to-Date Avgs			Current Month		
	FY 2003	FY 2004	FY 2005	FY 2006	FY 2006	FY 2007	% Change	Mar-06	Mar-07	% Change
Sheriff's Office										
Bookings (monthly avg)	9,875	10,176	9,975	10,459	10,338	10,439	1.0%	10,711	11,338	5.9%
Releases (monthly avg)	9,857	10,196	9,934	10,485	10,345	10,486	1.4%	10,857	11,287	4.0%
Avg Daily Population	8,044	8,657	9,054	9,733	9,816	8,838	-10.0%	9,571	8,782	-8.2%
Avg Length of Stay (in days)	24.4	26	27.7	28.4	29.0	25.8	-11.0%	27.7	24.0	-13.4%
Superior Court										
Filings	2,904	3,062	2,996	3,248	3,197	3,102	-3.0%	3,682	3,750	1.8%
Terminations	2,330	2,612	2,758	2,984	2,908	2,971	2.2%	3,358	3,077	-8.4%
Clearance Rate	80.0%	85.0%	93.0%	92.1%	91.2%	96.9%	6.2%	91.2%	82.1%	-10.0%
Active Pending Inventory	8,123	9,106	10,002	10,856	10,924	10,233	-6.3%	10,612	10,219	-3.7%
Trials Completed	59	42	51	68	65	87	33.8%	76	97	27.6%
Trial Rate	2.0%	1.4%	1.7%	2.1%	2.1%	2.8%	33.3%	2.1%	2.6%	23.8%
Justice Courts Filings										
DUI	949	986	1,023	971	1,081	1,036	-4.2%	1,123	850	-24.3%
All other Criminal Traffic	1,969	1,900	2,252	3,491	3,045	5,494	80.4%	4,051	6,469	59.7%
Civil Traffic	13,500	12,353	14,290	12,824	13,281	12,584	-5.2%	12,300	13,006	5.7%
Misdemeanor	2,714	2,531	2,581	2,052	1,932	2,164	12.0%	1,977	1,994	0.9%
Small Claims	1,694	1,796	1,578	1,144	1,160	1,193	2.8%	1,186	1,180	-0.5%
Forcible Detainers	6,456	6,859	6,842	7,065	7,135	5,508	-22.8%	6,284	4,853	-22.8%
Other Civil	2,311	2,579	2,763	2,628	2,628	5,385	104.9%	3,195	5,797	81.4%
Orders of Protection	542	523	485	508	494	454	-8.1%	505	507	0.4%
Injunctions against Harassment	436	463	495	446	429	429	0.0%	440	445	1.1%
Adult Probation										
Pretrial General Supervision	700	990	978	775	784	778	-0.8%	755	664	-12.1%
Pretrial Intensive Supervision	331	657	816	1,077	1,077	1,116	3.6%	1,174	1,048	-10.7%
Pretrial Electronic Monitoring	97	153	164	190	185	242	30.8%	209	241	15.3%
Standard Probation Supervision	25,400	25,055	26,091	27,896	27,547	30,070	9.2%	28,557	30,407	6.5%
Intensive Probation Supervision	1,267	1,078	1,456	1,321	1,330	1,279	-3.8%	1,282	1,252	-2.3%
Juvenile Detention and Probation										
Avg Daily Detention Pop	401	431	443	433	425	408	-4.0%	470	410	-12.8%
Avg Length of Stay (in days)	15.1	16.6	18.7	18.5	17.9	16.9	-5.6%	19	16.8	-11.6%
Standard Probation	4,387	4,232	4,108	4,055	4,022	4,261	5.9%	4,010	4,253	6.1%
Intensive Probation	659	518	547	527	530	518	-2.3%	499	527	5.6%



Maricopa County

Criminal Justice System

CRIMINAL JUSTICE SYSTEM NEWS – MARCH 2007

Adult Incarceration

Bookings increased to 11,338 in March, compared to February's 9,851; this is the highest booking rate ever. However, because releases were high and Average Length of Stay was low, the **Average Daily Population only increased** from 8,699 to 8,782. The ADP is down 10% when compared to the same time period last Fiscal Year. The **pretrial population increased** from 5,665 in February to 5,736 in March. The **sentenced population remained nearly the same** for the third month in a row, at 2,662 in March. The **hold population increased** from 329 in February to 345 in March.

Overall ALOS decreased from 24.7 to 24.0 days (this is the lowest ALOS since March 2003 – 23.9 days). ALOS is down 11% when compared to the same time period last Fiscal Year. **The ALOS for agency holds increased** from 59.6 to 65.8 days. **Pretrial ALOS increased** from 6.4 to 7.9 days. **Sentenced ALOS decreased** from 31.9 to 28.3 days. Breaking down the pretrial population, felony ALOS increased from 9.3 to 11.8 days and misdemeanor ALOS increased from 3.1 to 3.4 days.

Superior Court Filings & Case Processing

Criminal filings and terminations increased in March: filings from 3,166 to 3,750 (most ever) and terminations from 2,648 to 3,077. The resulting clearance rate was 82.1%. **The active pending case inventory increased slightly** from 10,205 to 10,219. **Filings into RCC and EDC increased in March:** RCC filings from 1,904 to 2,335, EDC filings from 981 to 1,143. **97 trials were completed in March** compared to 80 in February. The number of trials completed is 34% higher when compared to the same time period last Fiscal Year. **The March trial rate was 2.6%**, a slight increase from February's 2.5%. The trial rate is 33% higher when compared to the same time period last Fiscal Year.

Justice Court Filings

The number of **forcible detainers increased** from February to March, from 4,265 to 4,853. **Order of protection increased** from 433 to 507, while **injunctions against harassment stayed nearly the same** at 445 in March.

Adult Probation

All measures of pretrial supervision decreased in March compared to February: general from 715 to 664; intensive from 1,095 to 1,048; and electronic monitoring from 248 to 241. Electronic monitoring is 31% higher when compared to the same time period last Fiscal Year.

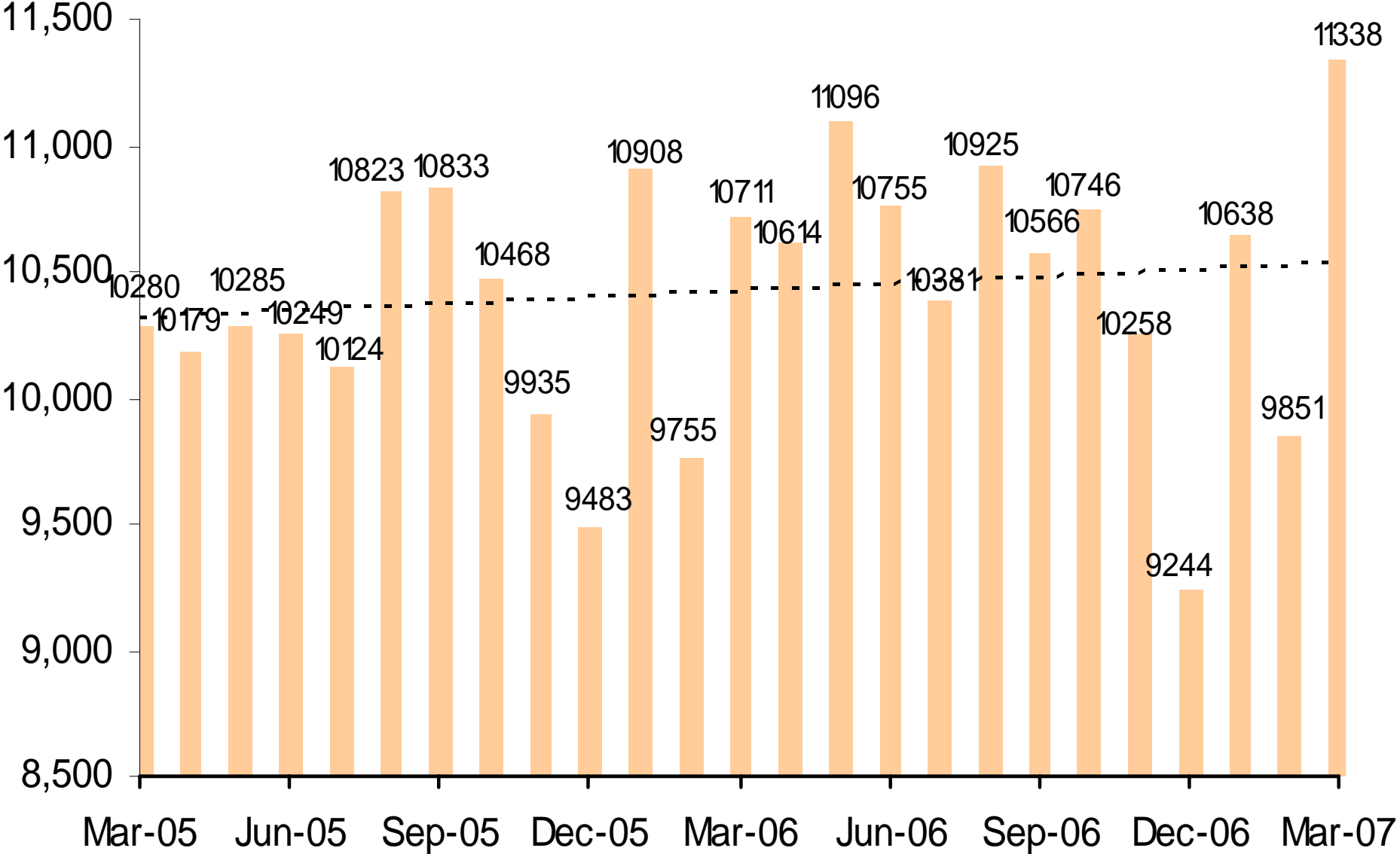
Levels of standard and intensive probation supervision decreased in March: standard from 30,483 to 30,407; intensive from 1,275 to 1,252 (this is the lowest level since March 2004 – 1,217). The level of standard probation is 9.2% higher when compared to the same time period last Fiscal Year, while the level of intensive probation is 3.8% lower.

Juvenile Detention and Probation

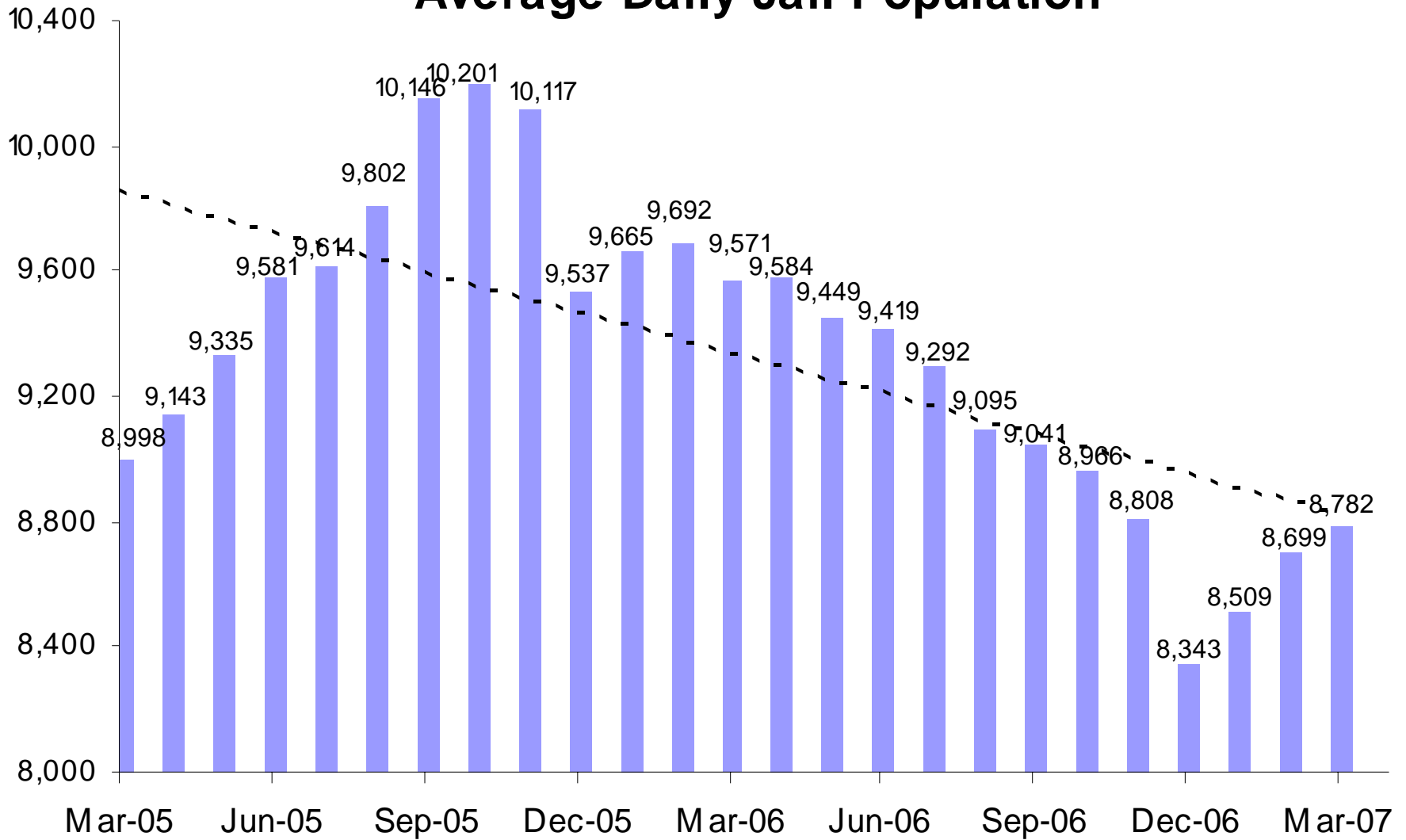
The **Average Daily Detention Population decreased** from 429 in February to 410 in March. ADP is down 4% when compared to the same time period last Fiscal Year. **ALOS increased** from 15.1 to 16.8 days. ALOS is down 6% when compared to the same time period last Fiscal Year. **Electronic Monitoring increased** from February's 139 to March's 150. **Home detention remained nearly the same**, at 253.

Levels of juvenile standard and intensive probation increased slightly: standard from 4,201 to 4,253 and intensive from 523 to 527.

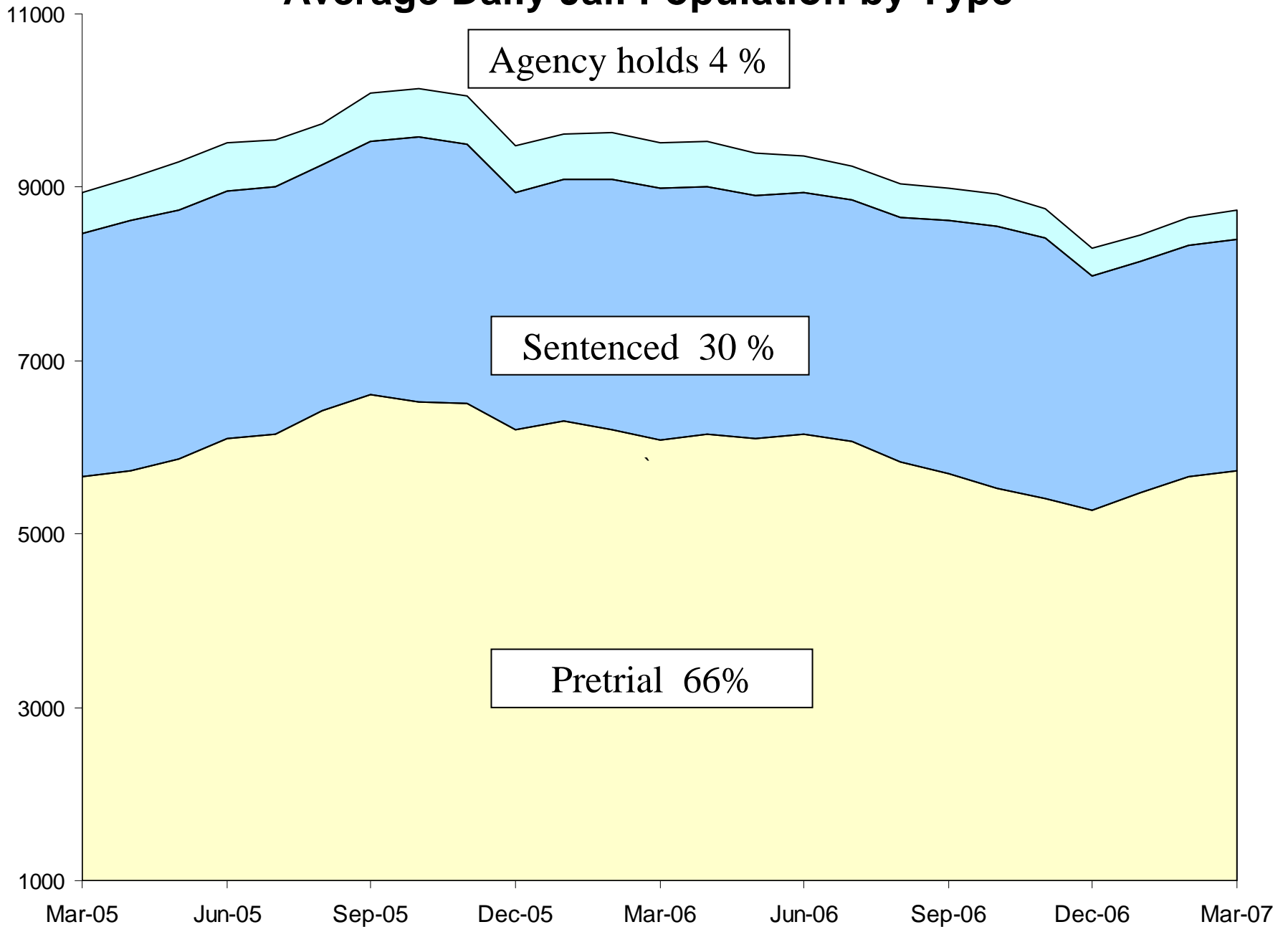
Jail Bookings



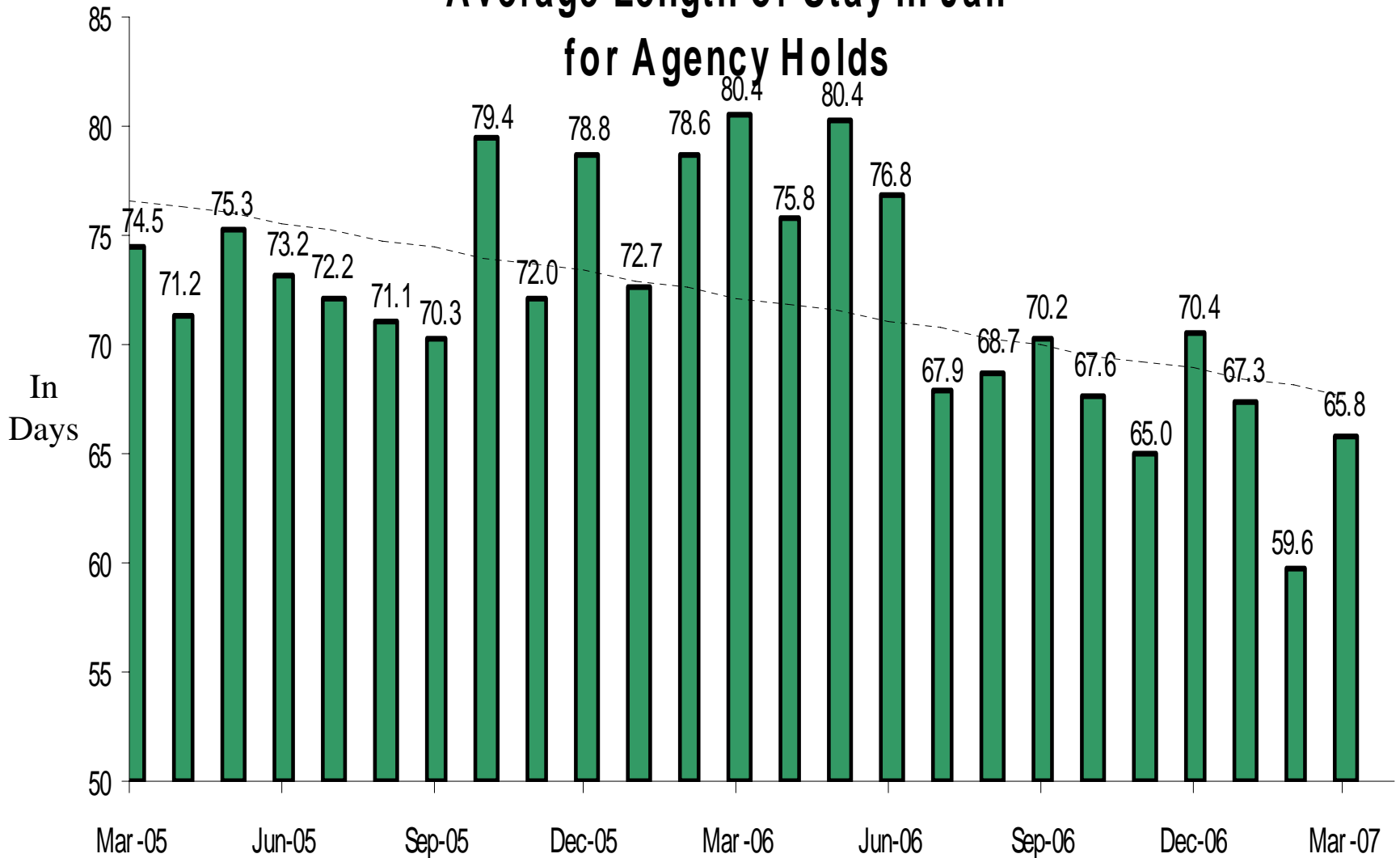
Average Daily Jail Population



Average Daily Jail Population by Type

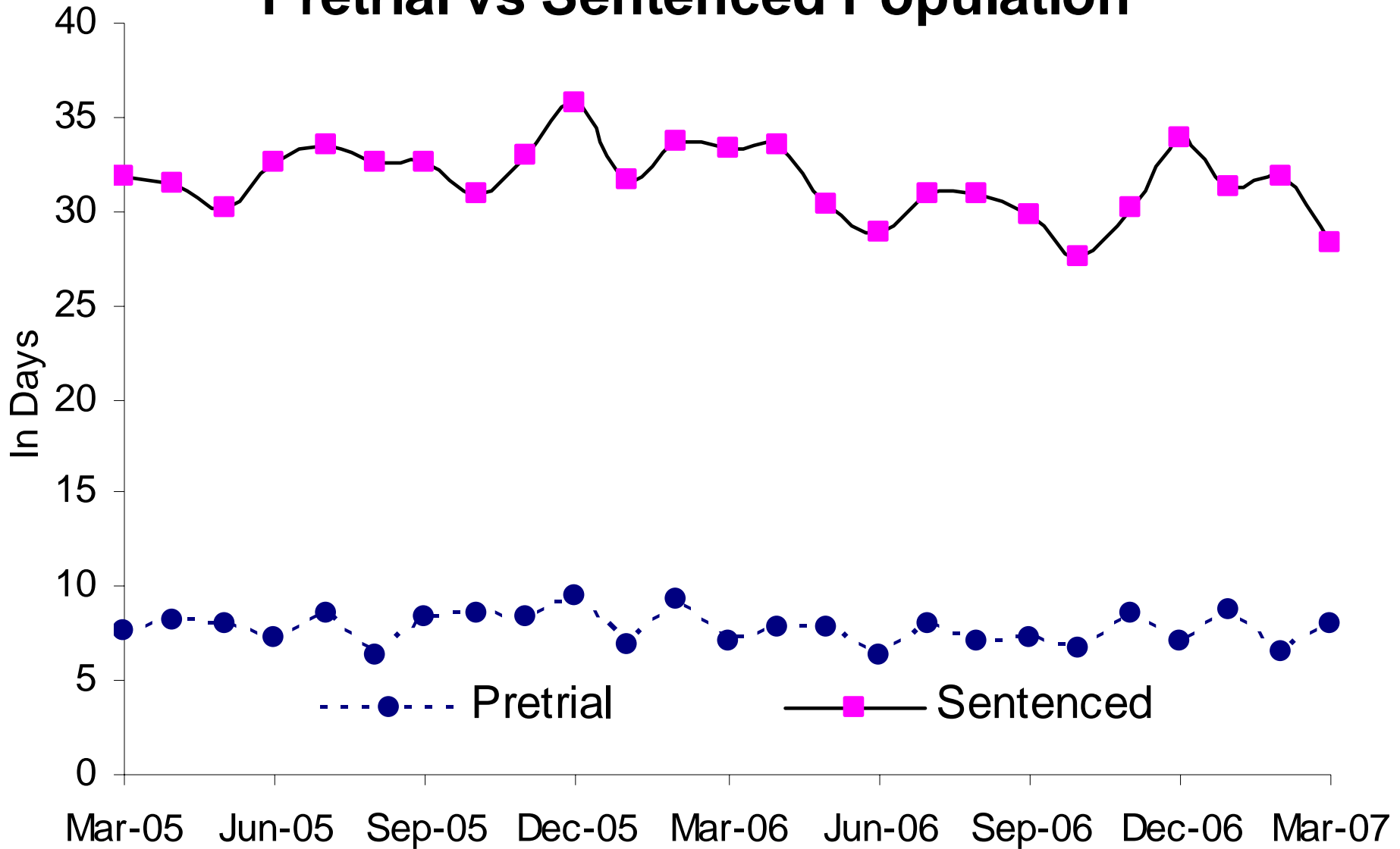


Average Length of Stay in Jail for Agency Holds

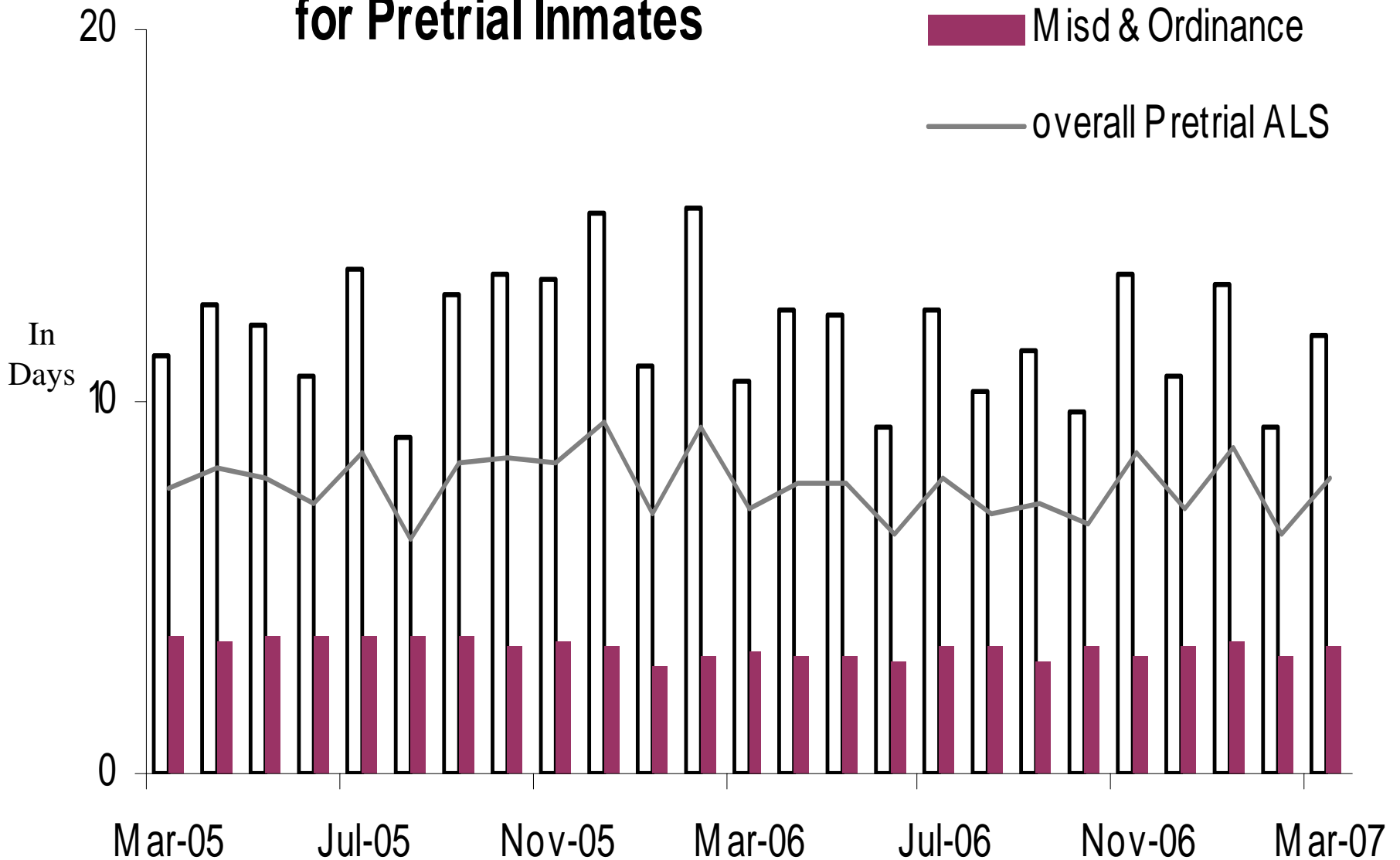


62% Dept of Corrections, 20% Federal agencies, 18% other

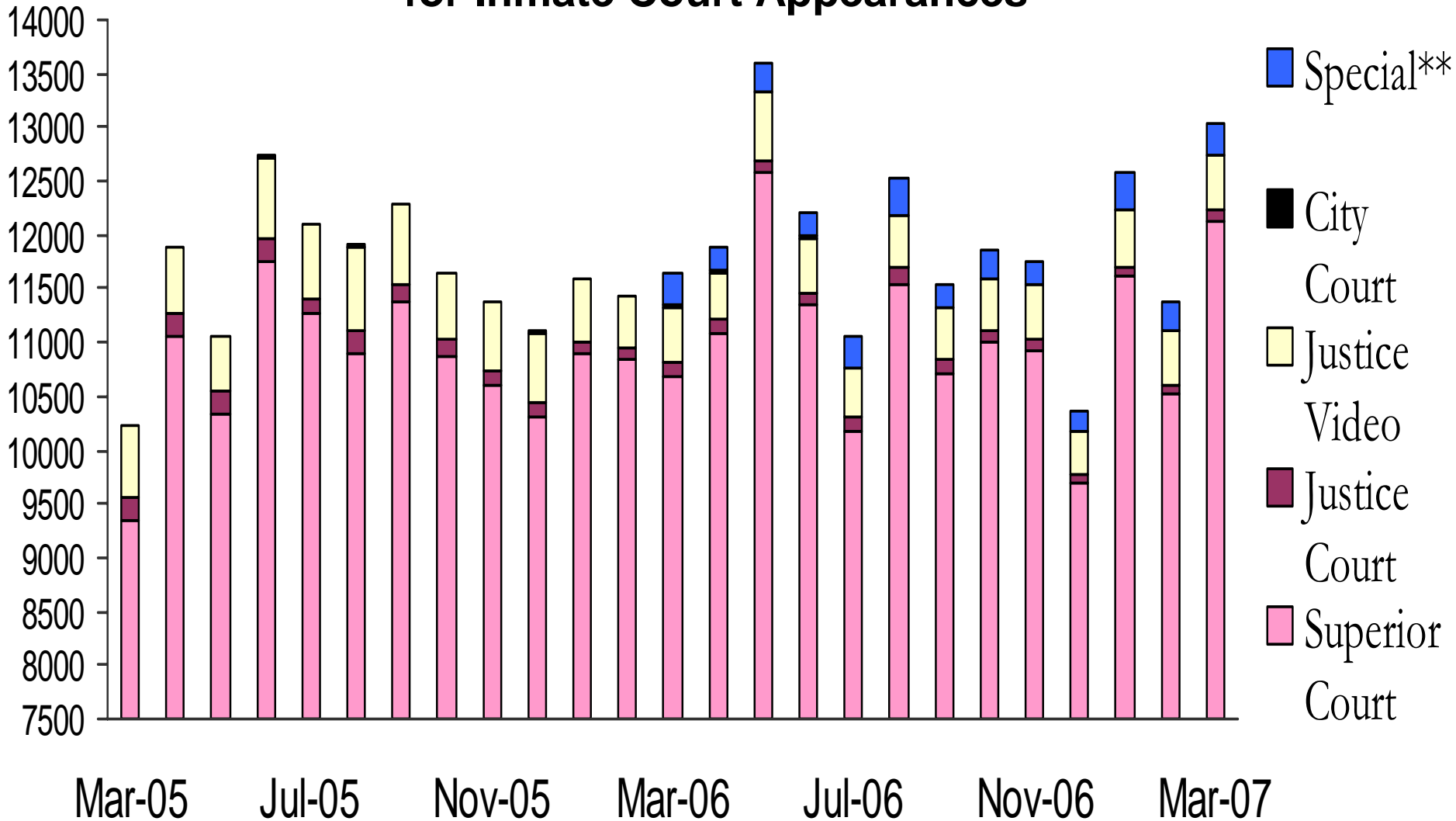
Average Length of Stay in Jail Pretrial vs Sentenced Population



Average Length of Stay in Jail for Pretrial Inmates



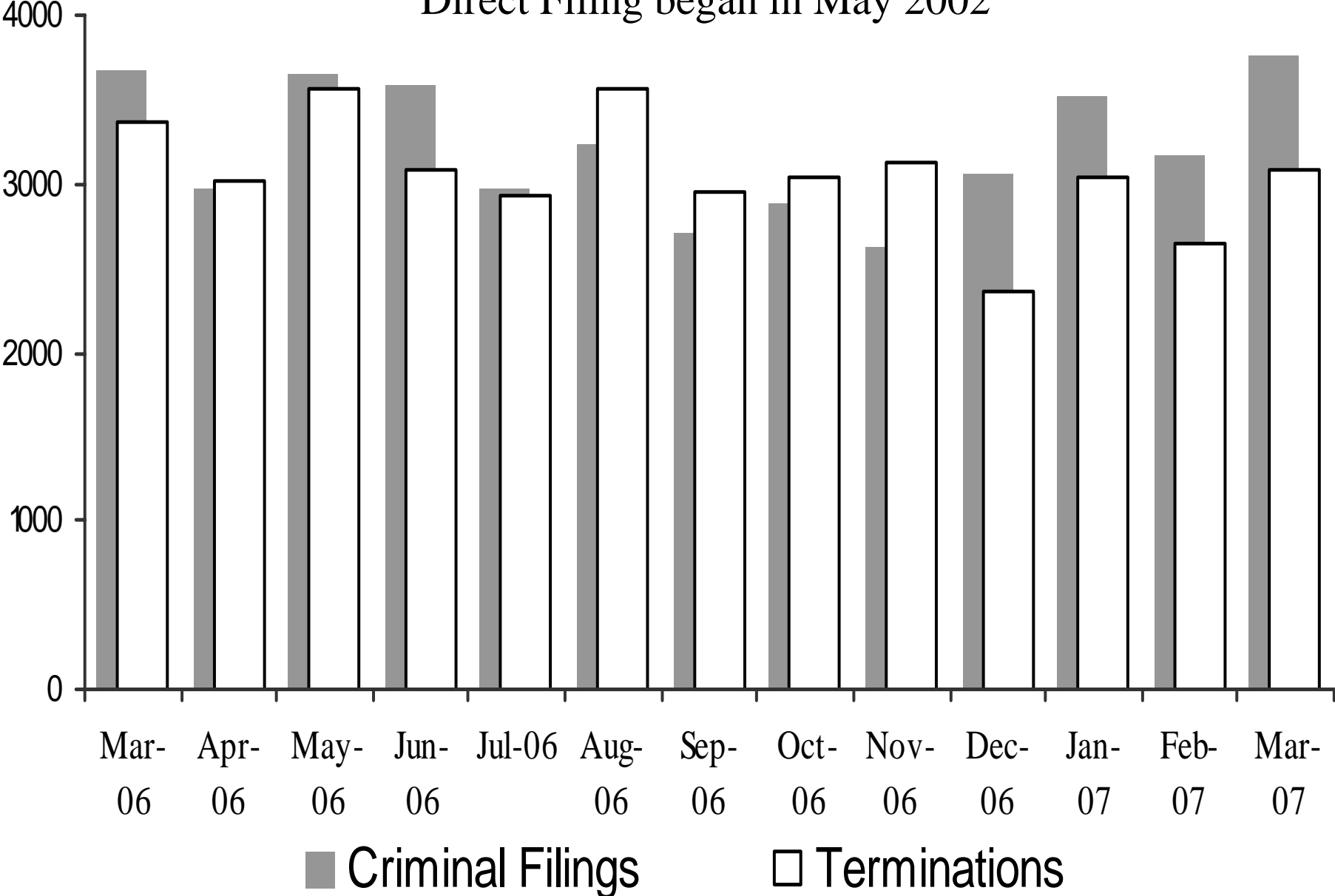
Sheriff's Office Transports for Inmate Court Appearances



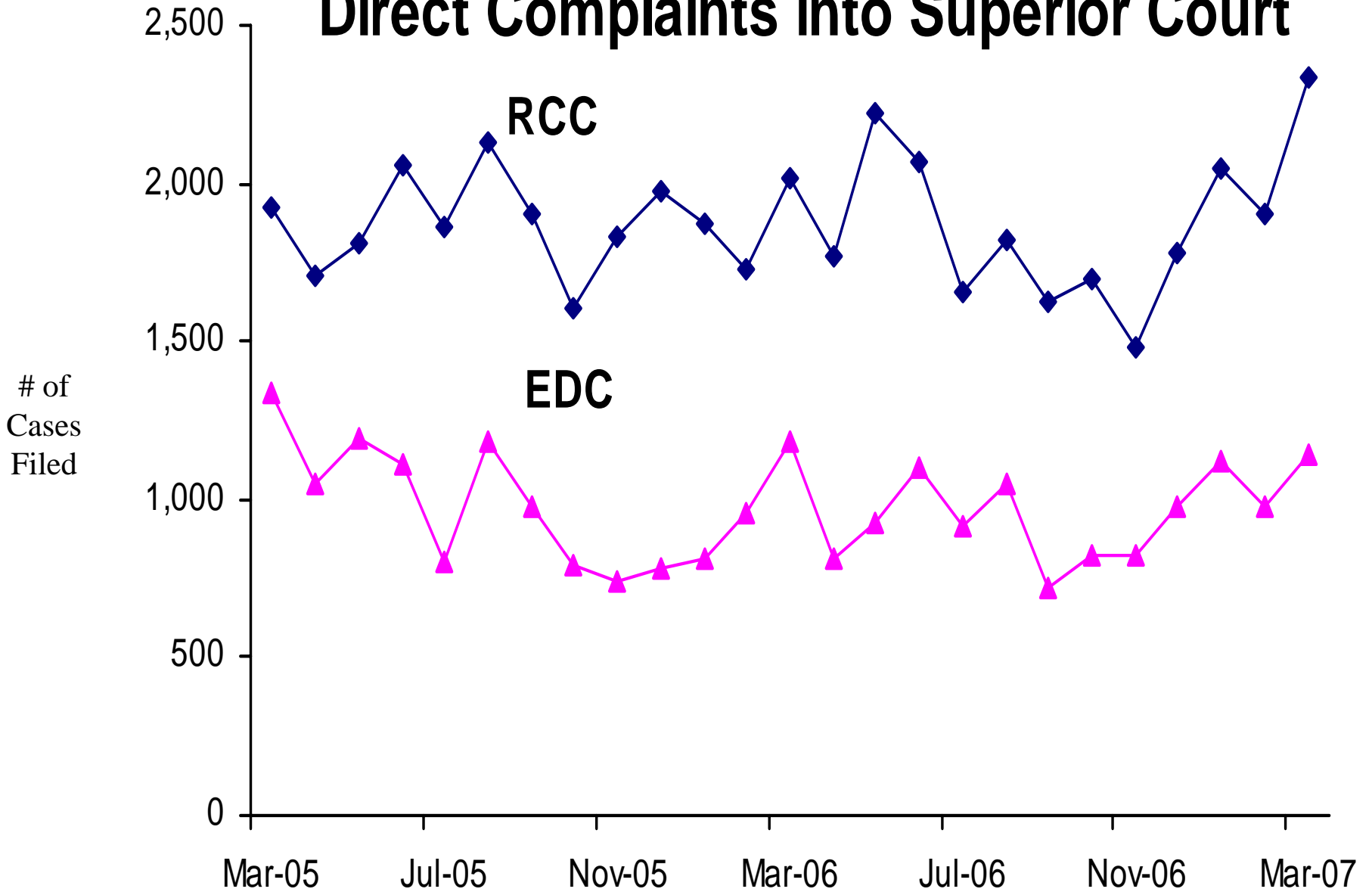
“Special” cases added in March 2006 include Downtown Remands, SEJD Remands, and SEJD Unscheduled.

Superior Court Filings and Terminations

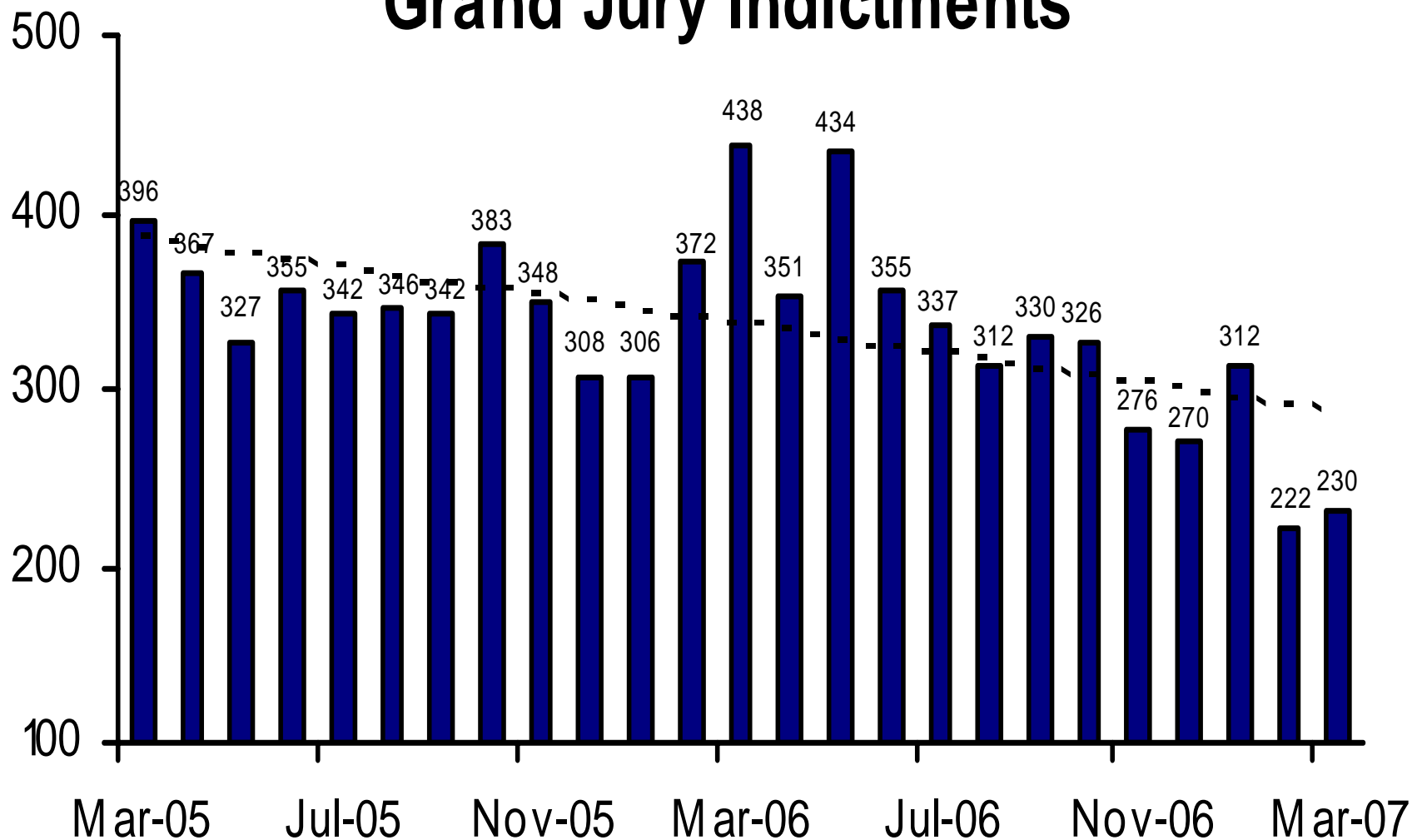
Direct Filing began in May 2002



Direct Complaints into Superior Court

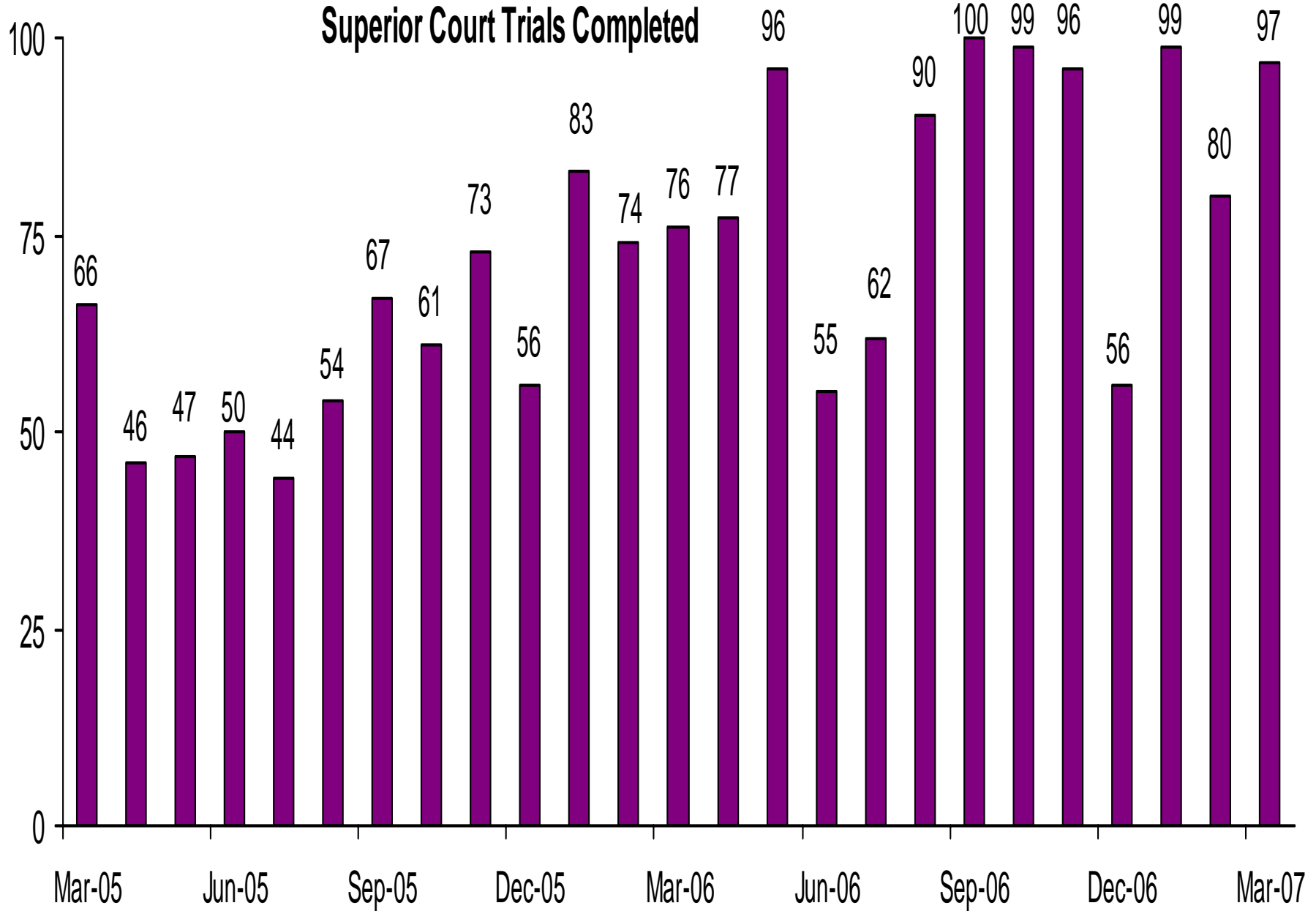


Grand Jury Indictments

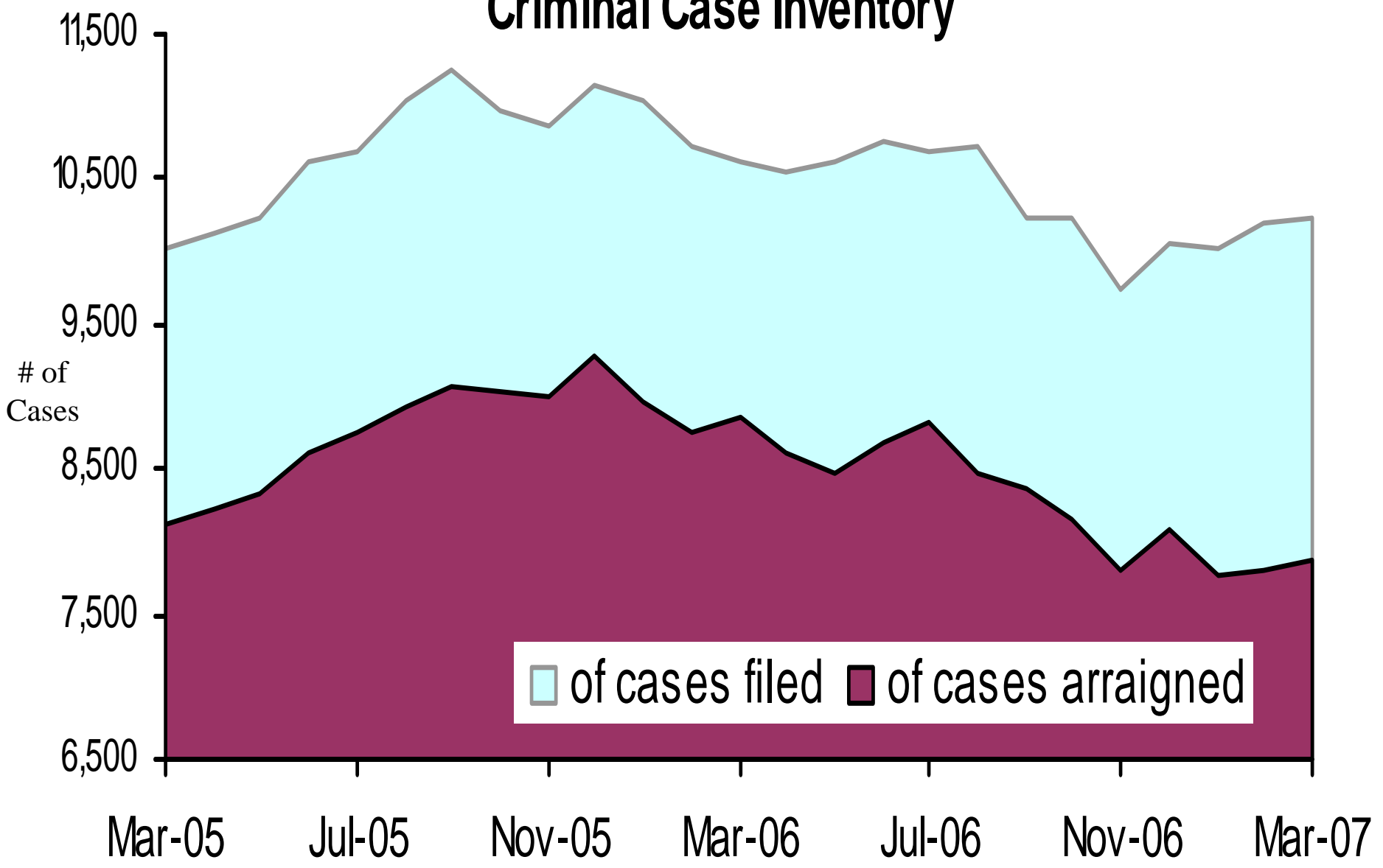


These numbers do not include notices of supervening indictments, non-EDC direct complaints, and juvenile direct complaints.

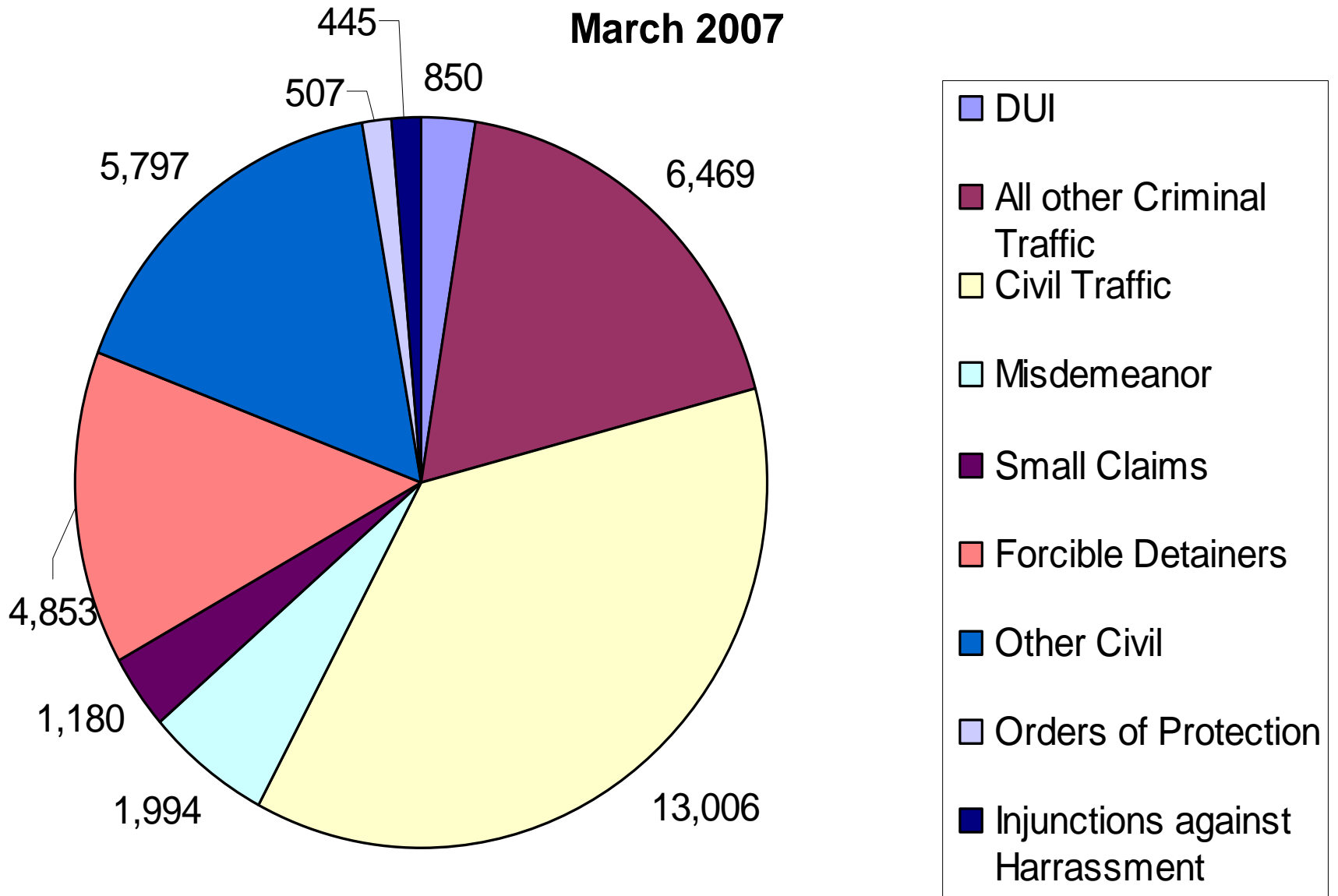
Superior Court Trials Completed



Active Pending Criminal Case Inventory



Justice Court Filings March 2007



Pretrial Supervision Defendant Monitoring Unit

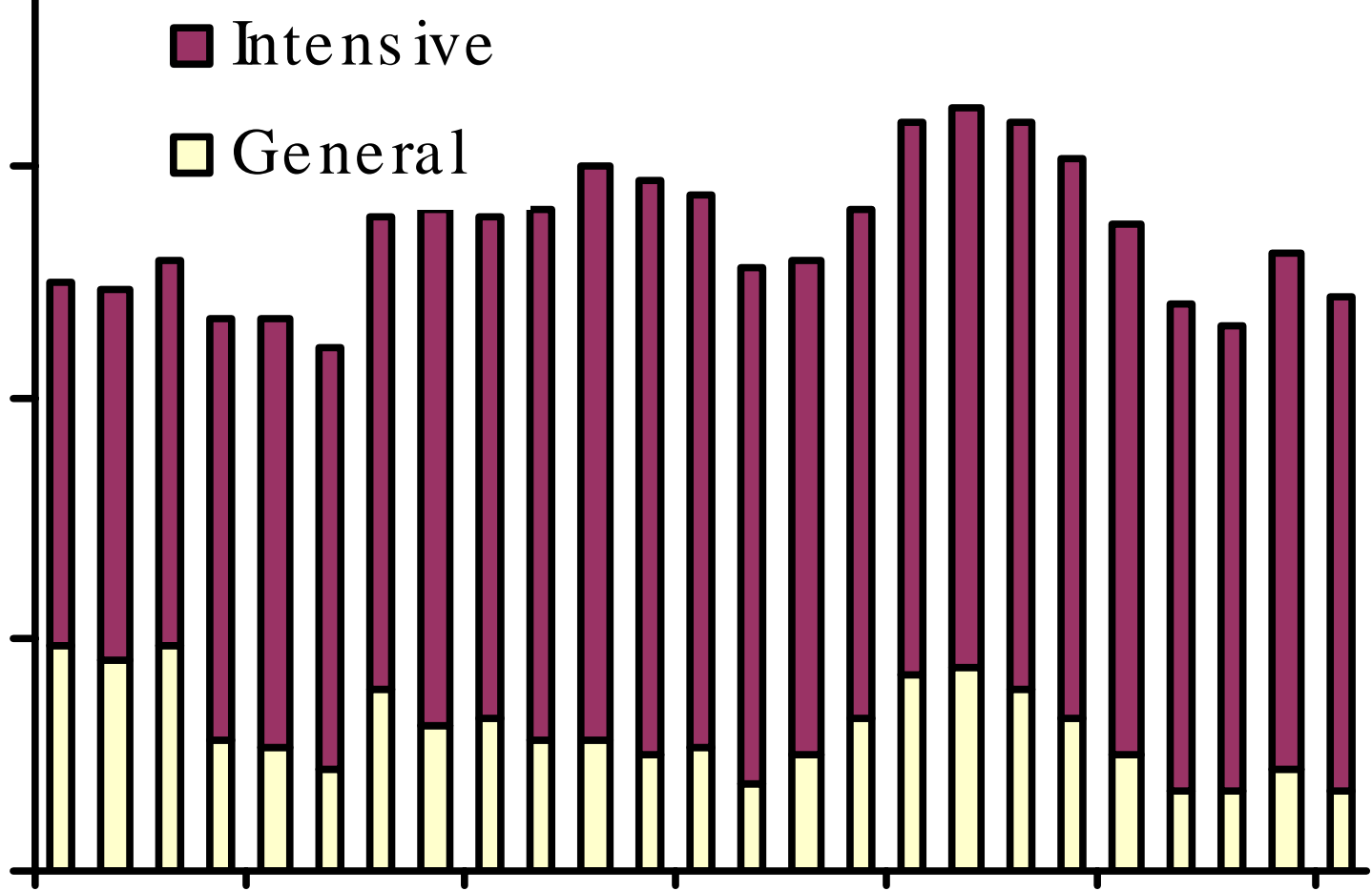
Intensive

General

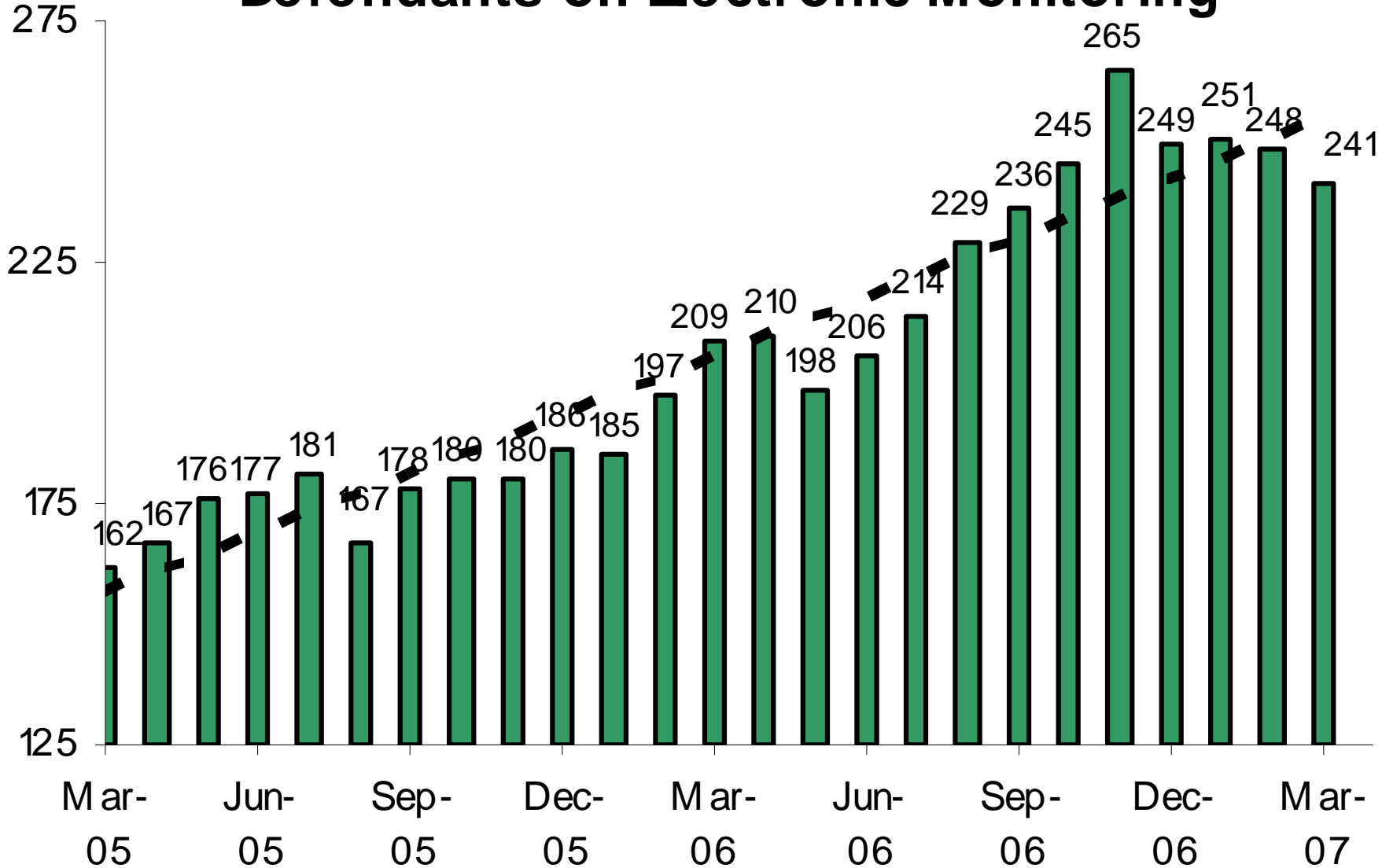
of Defendants Monitored

2,500
2,000
1,500
1,000
500

Mar-05 Jul-05 Nov-05 Mar-06 Jul-06 Nov-06 Mar-07

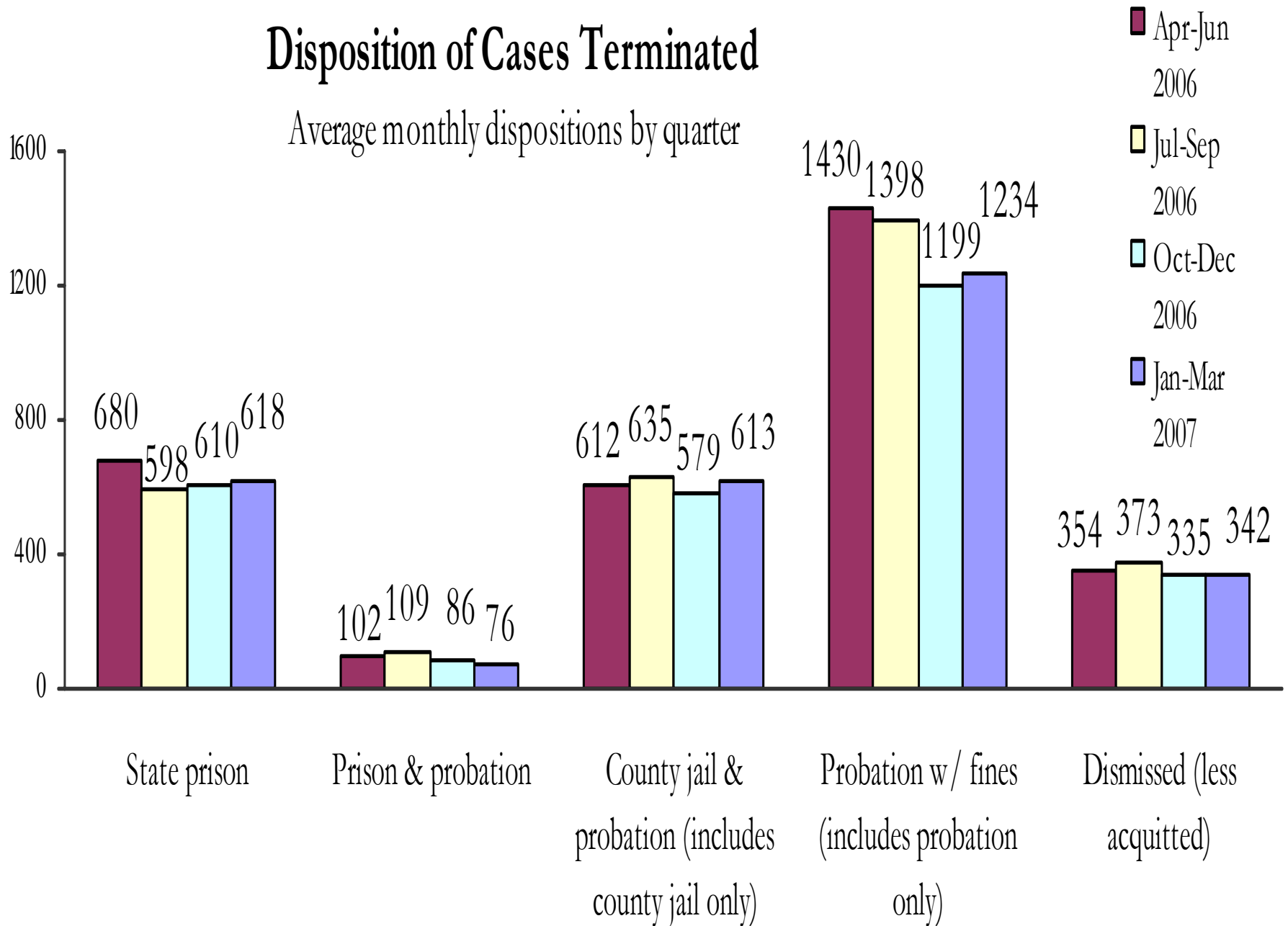


Pretrial Supervision Defendants on Electronic Monitoring

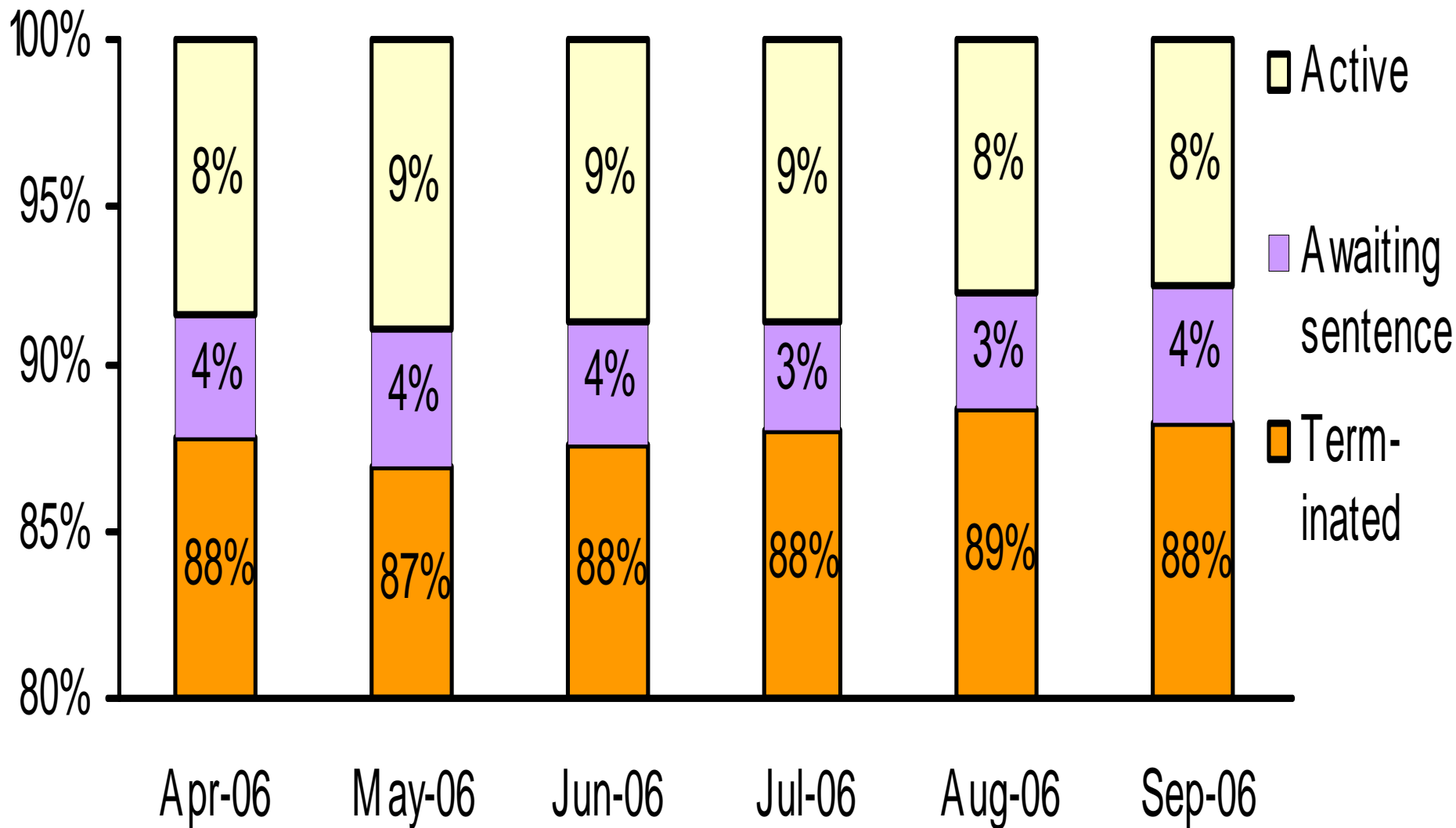


Disposition of Cases Terminated

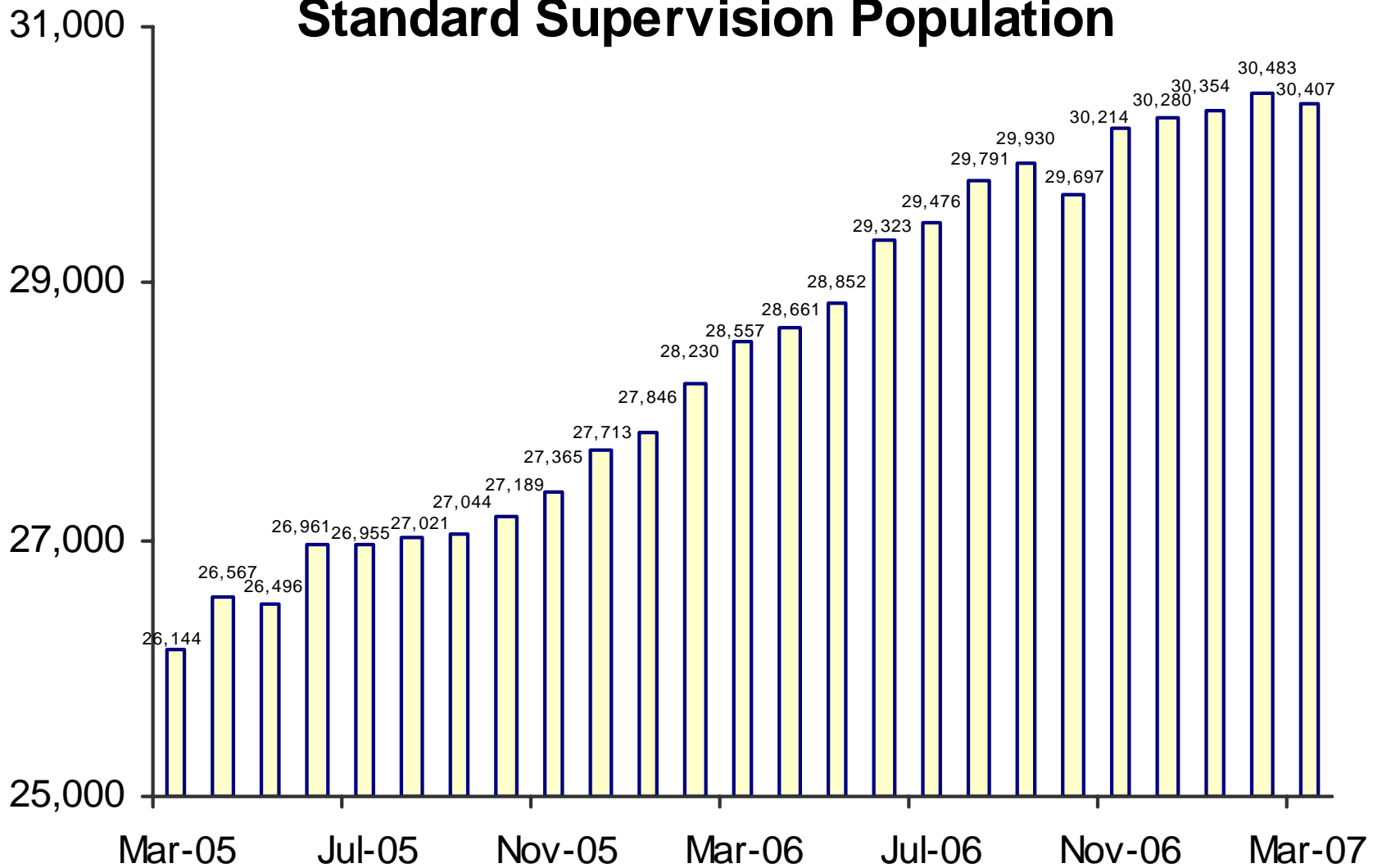
Average monthly dispositions by quarter



Status of Cases After 180 Days

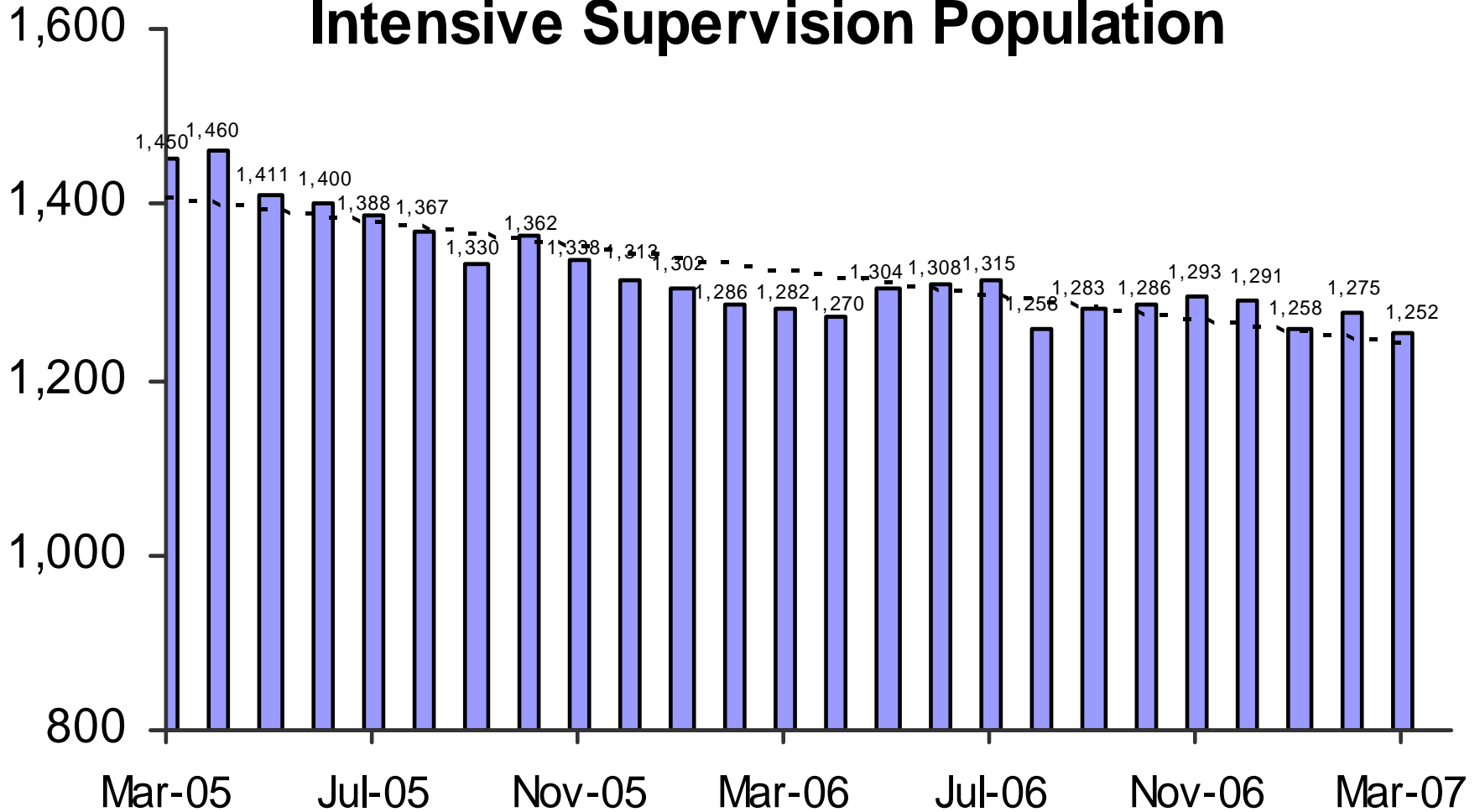


Adult Probation Standard Supervision Population

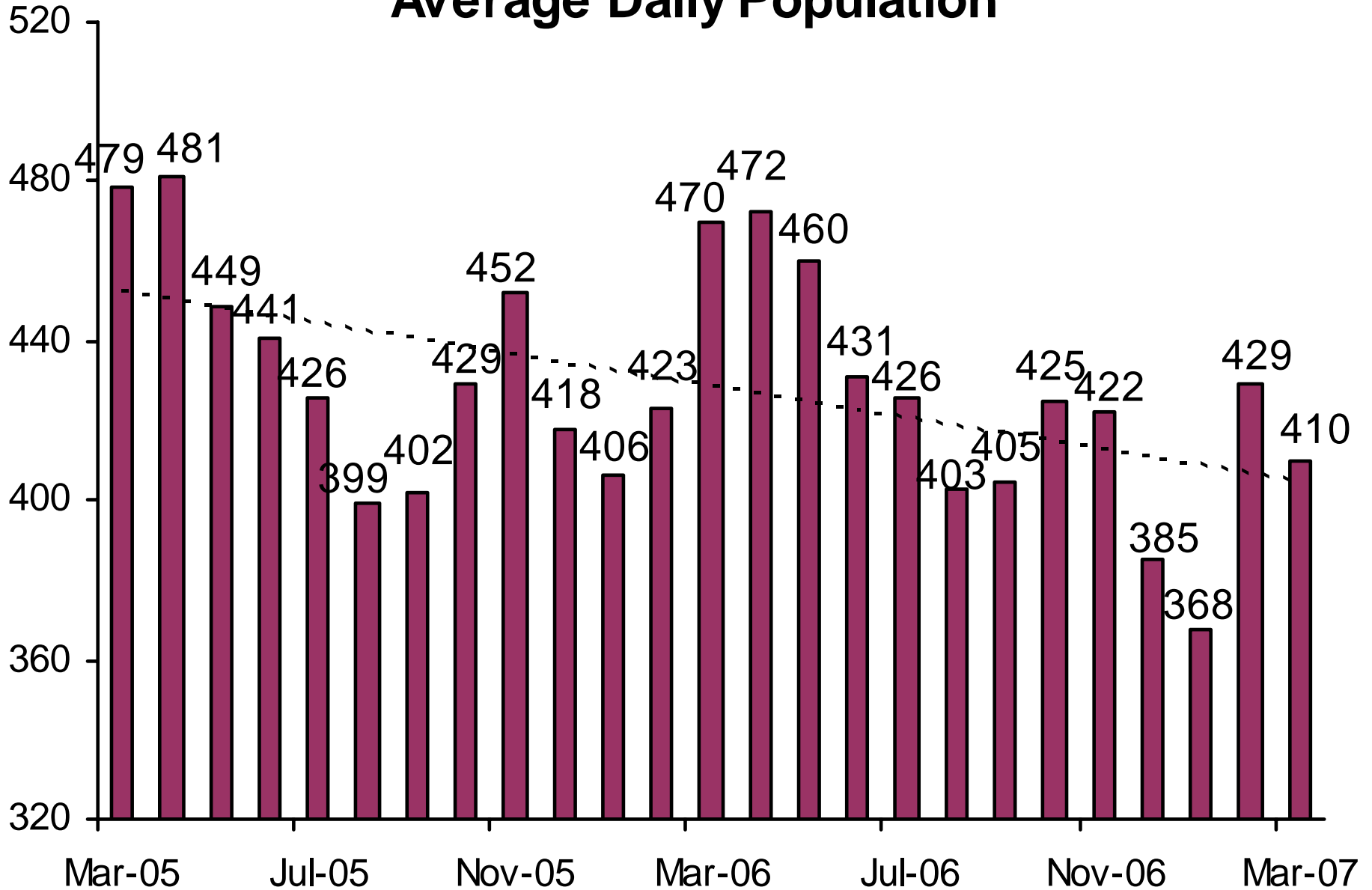


This population includes Interstate Compact and Report and Review caseloads, as reported to the Board of Supervisors and JLBC.

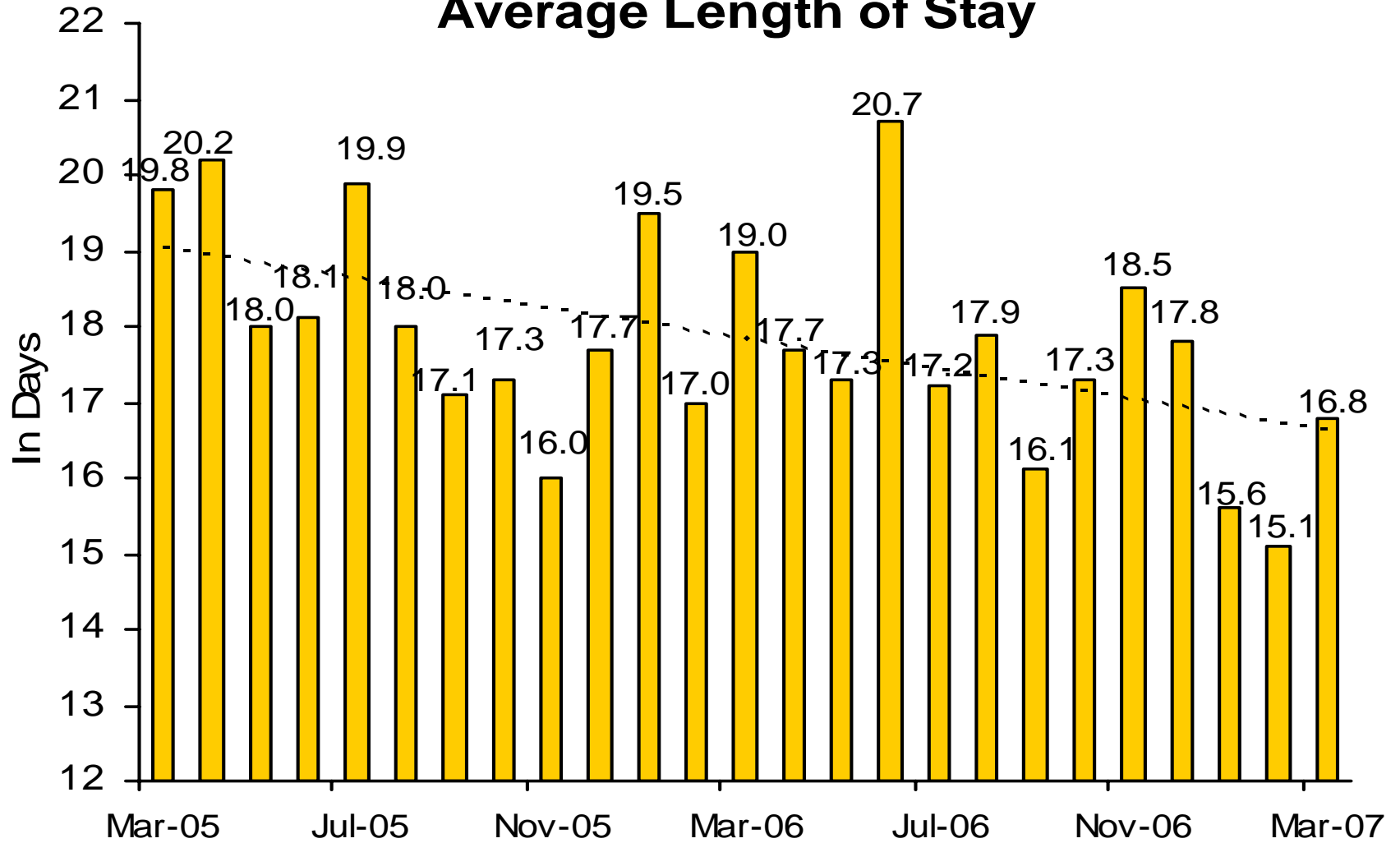
Adult Probation Intensive Supervision Population



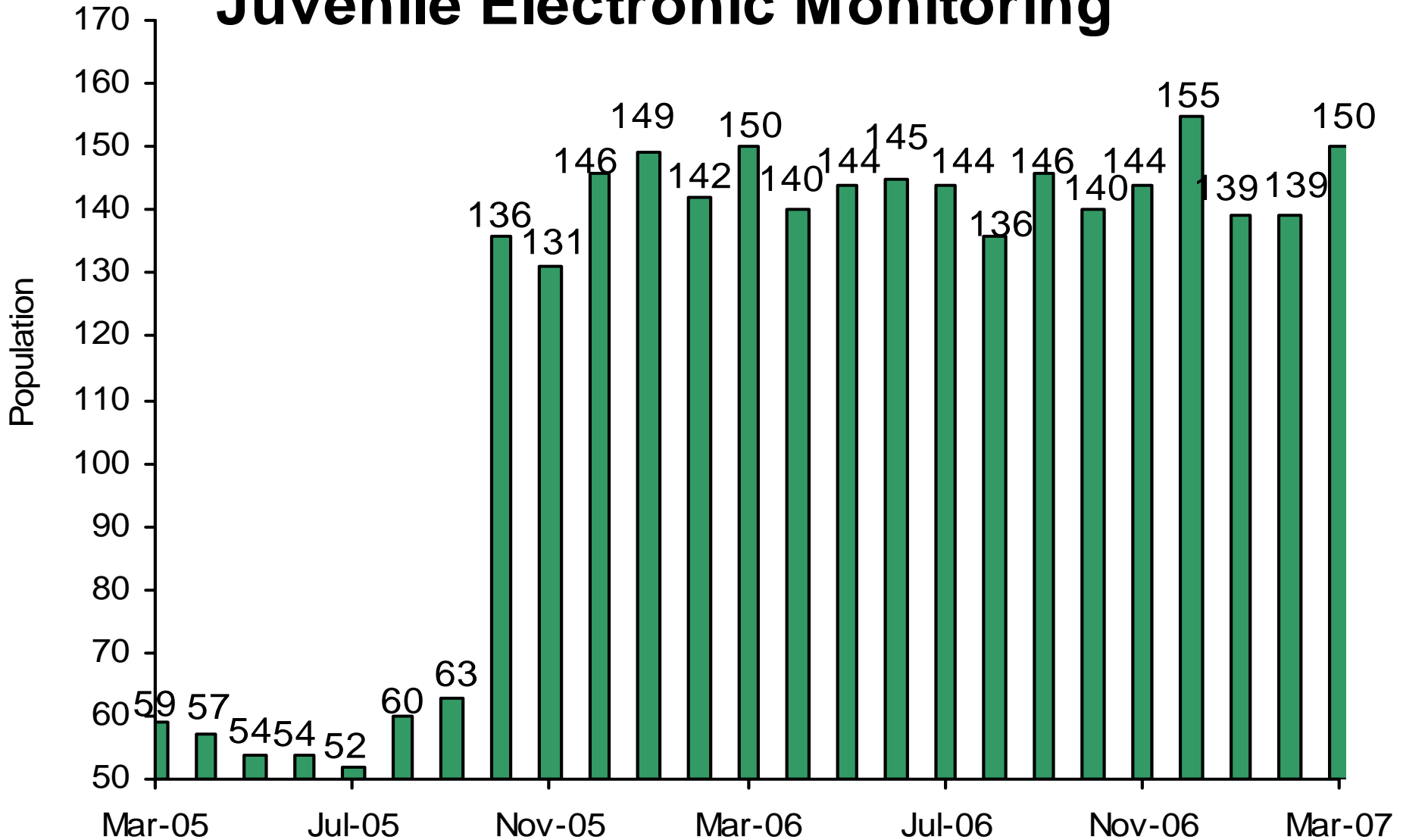
Juvenile Detention Average Daily Population



Juvenile Detention Average Length of Stay

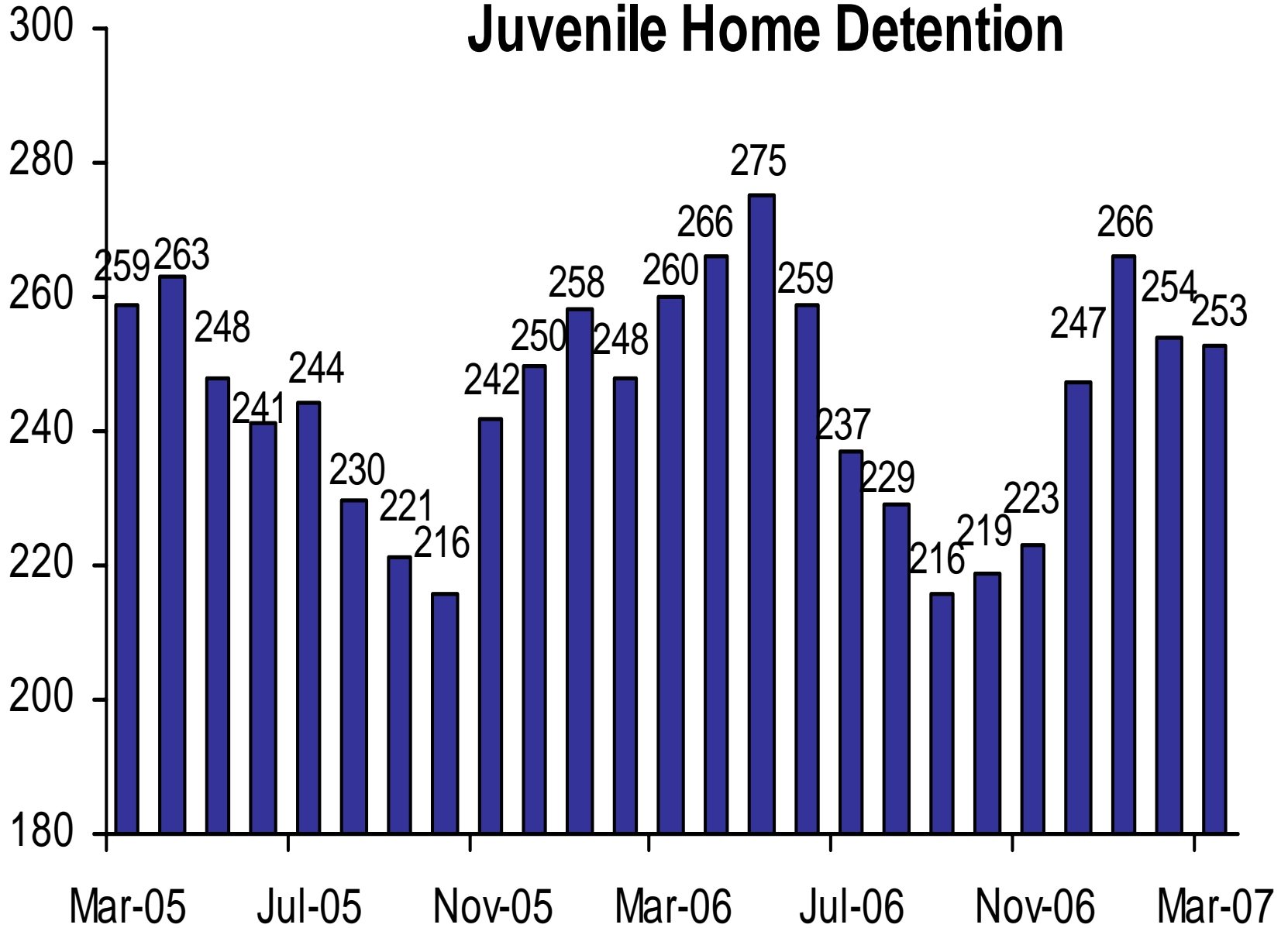


Juvenile Electronic Monitoring



The increase beginning in October 2005 is due to more accurate data collection, including counting Intensive Probation use in addition to Standard use.

Juvenile Home Detention



Juvenile Probation

■ # on standard probation ■ # on intensive probation

