



Maricopa County

Criminal Justice System

Monthly Performance Report for March 2008

	Annual Averages				Year-to-Date Avgs			Current Month		
	FY 2004	FY 2005	FY 2006	FY 2007	FY 2007	FY 2008	% Change	Mar-07	Mar-08	% Change
Sheriff's Office										
Bookings (monthly avg)	10,176	9,975	10,459	10,654	10,439	10,769	3.2%	11,338	11,010	-2.9%
Releases (monthly avg)	10,196	9,934	10,485	10,619	10,486	10,837	3.3%	10,486	10,821	3.2%
Avg Daily Population	8,657	9,054	9,733	8,941	8,837	9,296	5.2%	8,782	8,863	0.9%
Avg Length of Stay (in days)	26	27.7	28.4	25.6	25.8	26.4	2.2%	24.0	25.0	4.2%
Superior Court										
Filings	3,062	2,996	3,248	3,217	3,102	3,465	11.7%	3750	3456	-7.8%
Terminations	2,612	2,758	2,984	2,958	2,971	3,138	5.6%	3077	3069	-0.3%
Clearance Rate	85.0%	93.0%	92.1%	93.3%	96.9%	90.7%	-6.4%	82.1%	88.8%	8.2%
Active Pending Inventory	9,106	10,002	10,856	10,397	10,233	11,727	14.6%	10,219	11,696	14.5%
Trials Completed	42	51	68	84	87	80	-8.0%	97	90	-7.2%
Trial Rate	1.4%	1.7%	2.1%	2.6%	2.8%	2.3%	-17.9%	2.6%	2.6%	0.0%
Justice Courts Filings										
DUI	986	1,023	971	947	1059	997	-5.9%	850	829	-2.5%
All other Criminal Traffic	1,900	2,252	3,491	6,317	5269	5809	10.2%	6,469	5,259	-18.7%
Civil Traffic	12,353	14,290	12,824	12,677	12327	12431	0.8%	13,006	11,316	-13.0%
Misdemeanor	2,531	2,581	2,052	2,619	2076	1954	-5.9%	1,994	1,813	-9.1%
Small Claims	1,796	1,578	1,144	1,112	1165	1325	13.7%	1,180	1,531	29.7%
Forcible Detainers	6,859	6,842	7,065	5,679	5881	6801	15.6%	4,853	5,884	21.2%
Other Civil	2,579	2,763	2,628	5,497	4771	5477	14.8%	5,797	6,187	6.7%
Orders of Protection	523	485	508	459	456	409	-10.3%	507	427	-15.8%
Injunctions against Harassment	463	495	446	423	436	412	-5.5%	445	455	2.2%
Adult Probation										
Pretrial General Supervision	990	978	775	748	778	781	0.4%	664	735	10.7%
Pretrial Intensive Supervision	657	816	1,077	1,085	1,116	1,309	17.3%	1,048	1,293	23.4%
Pretrial Electronic Monitoring	153	164	190	242	242	253	4.5%	241	268	11.2%
Standard Probation Supervision	25,055	26,091	27,896	27,896	30,070	30,032	-0.1%	30,407	29,625	-2.6%
Intensive Probation Supervision	1,078	1,456	1,321	1,321	1,279	1,106	-13.5%	1,252	1,056	-15.7%
Juvenile Detention and Probation*										
Avg Daily Detention Pop	443	433	433	403	408	331	-18.9%	410	293	-28.5%
Avg Length of Stay (in days)	18.7	18.5	18.5	16.5	16.9	14.6	-13.6%	16.8	13.2	-21.4%
Standard Probation	4,108	4,055	4,055	4,284	4,261	4,197	-1.5%	4,253	4,038	-5.1%
Intensive Probation	547	527	527	519	518	496	-4.2%	527	480	-8.9%
*July 2007 through October 2007 transitional months from JOLTS to iCIS.										



Maricopa County

Criminal Justice System

CRIMINAL JUSTICE SYSTEM NEWS – March 2008

Adult Incarceration

Bookings increased from February's 10,063 to March's 11,010. The **Average Daily Population** also **increased** from 8,812 to 8,863. The **Pretrial Population** **decreased** in March (6,121) compared to February (6,144). The **Sentenced Population** **increased** from 2,225 in February to 2,303 in March. **Agency Hold Populations** **decreased slightly** from 390 in February to 383 in March. **Overall Average Length of Stay (ALOS)** **decreased** in March from 25.4 to 25.0 days. **The ALOS for sentenced** **decreased** from 25.8 to 23.9 days, while **the ALOS for Agency Holds** **increased** from 60.1 to 61.1 days. **Pretrial ALOS** **increased** from 6.6 to 7.1 days.

Superior Court Filings & Case Processing

Criminal filings **decreased slightly** from February (3,477) to March (3,456). **Terminations** **decreased** from 3,205 to 3,069. The resulting **Clearance Rate** was 88.8%. **The Active Pending Case Inventory** **increased slightly** from 11,688 in February to 11,696 in March. **Filings into RCC** **increased** in March (1,972) compared to February (1,920). Inversely, **Filings into EDC** **decreased** from 1,320 in February to 1,178 in March. **The Number of Trials Completed** **decreased** from 91 in February to 90 in March. **The Trial Rate** **remained** 2.6%.

Justice Court Filings

Forcible Detainer Filings **increased** from February (5,541) to March (5,884). **Overall Filings** **decreased** from February (34,699) to March (33,701).

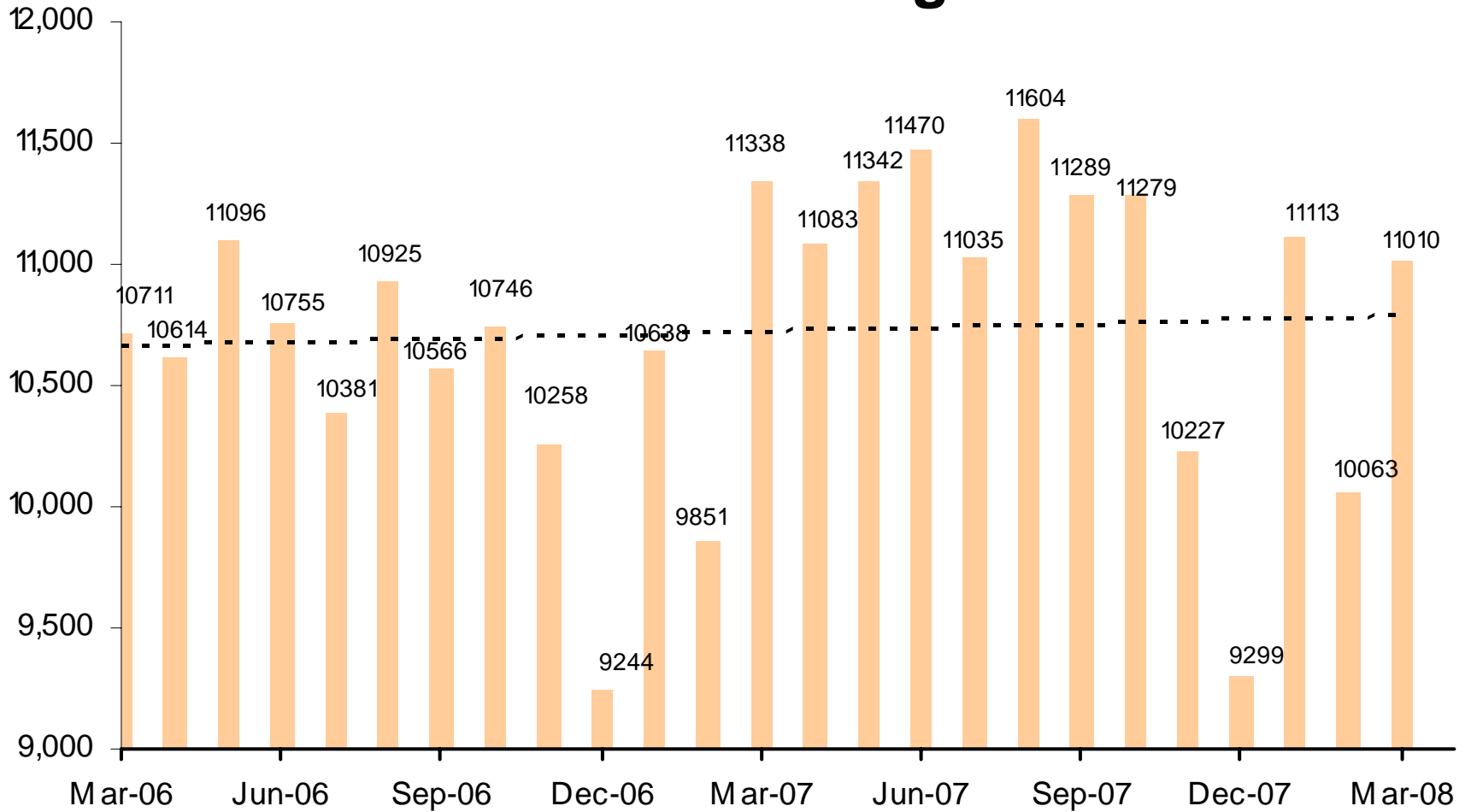
Adult Probation

Pretrial General Supervision **decreased** from February (749) to March (735); and **Pretrial Intensive Supervision** **decreased** from 1,389 in February to 1,293. **Electronic Monitoring** **decreased** from 279 to 268. **Levels of Standard Probation Supervision** **decreased** from 29,805 to 29,625; while **Levels of Intensive Probation Supervision** **decreased slightly** from 1,069 to 1,056.

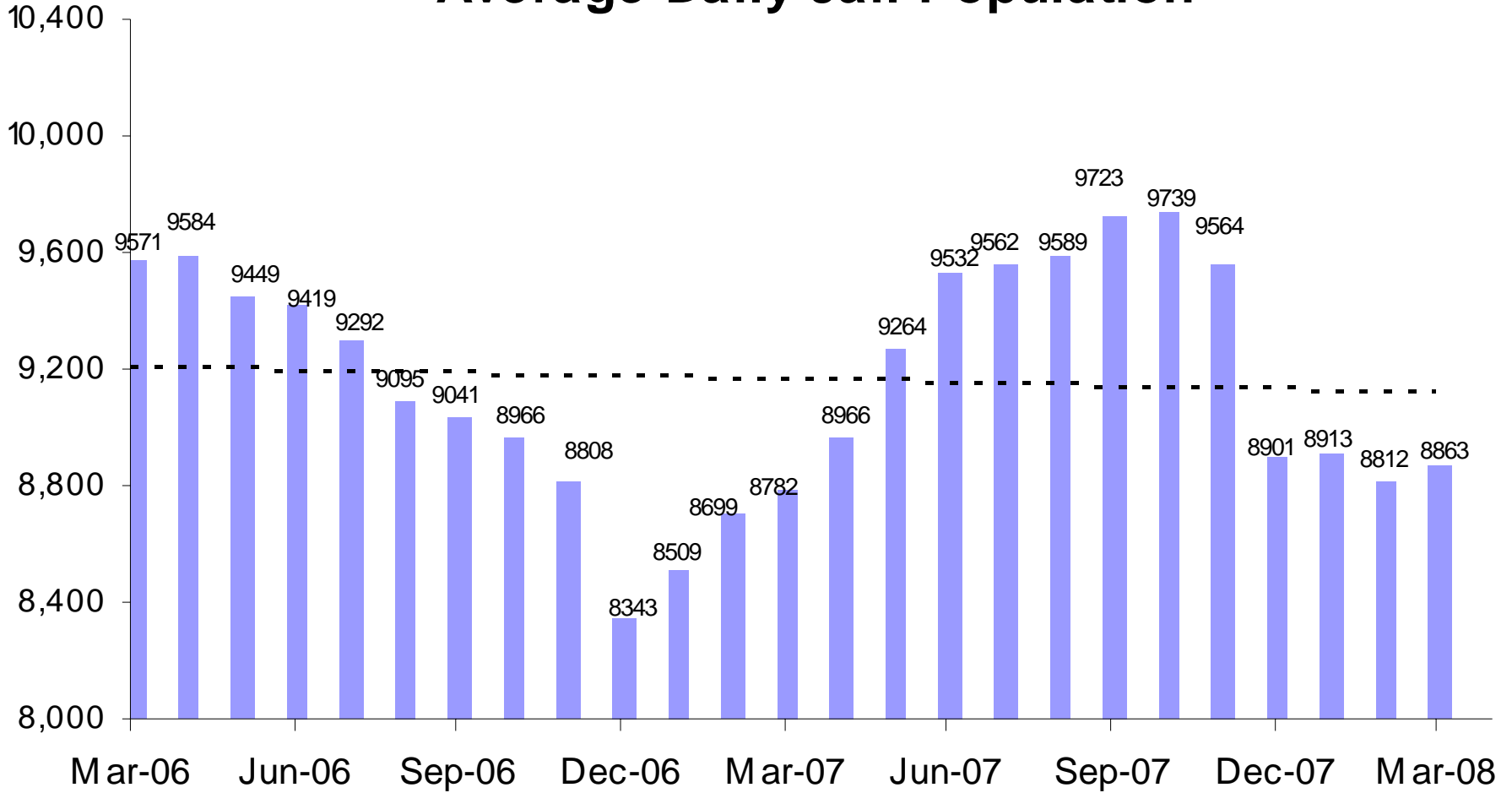
Juvenile Detention and Probation

July through October 2007 were transitional months for conversion from JOLTS to iCIS. Data is now available from July 2007 through March 2008. **All reported measurements have declined.** Average Daily Detention Population is down 19% comparing FY08 to date with FY07 to date. Comparing the same time period, Average Length of Stay has declined 13.6%. Standard probation has fallen by 1.5%, while intensive probation has fallen by 4.2%.

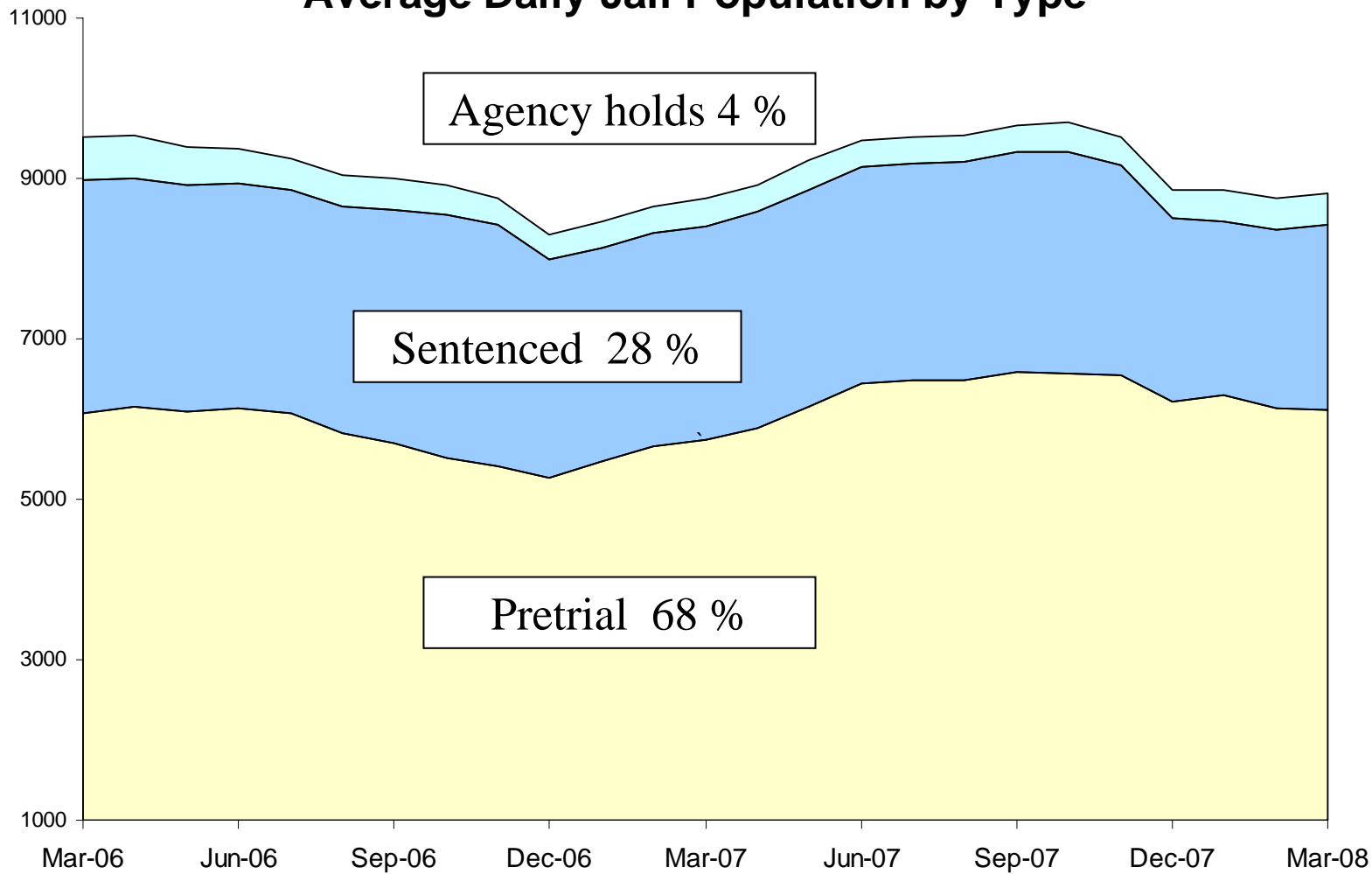
Jail Bookings



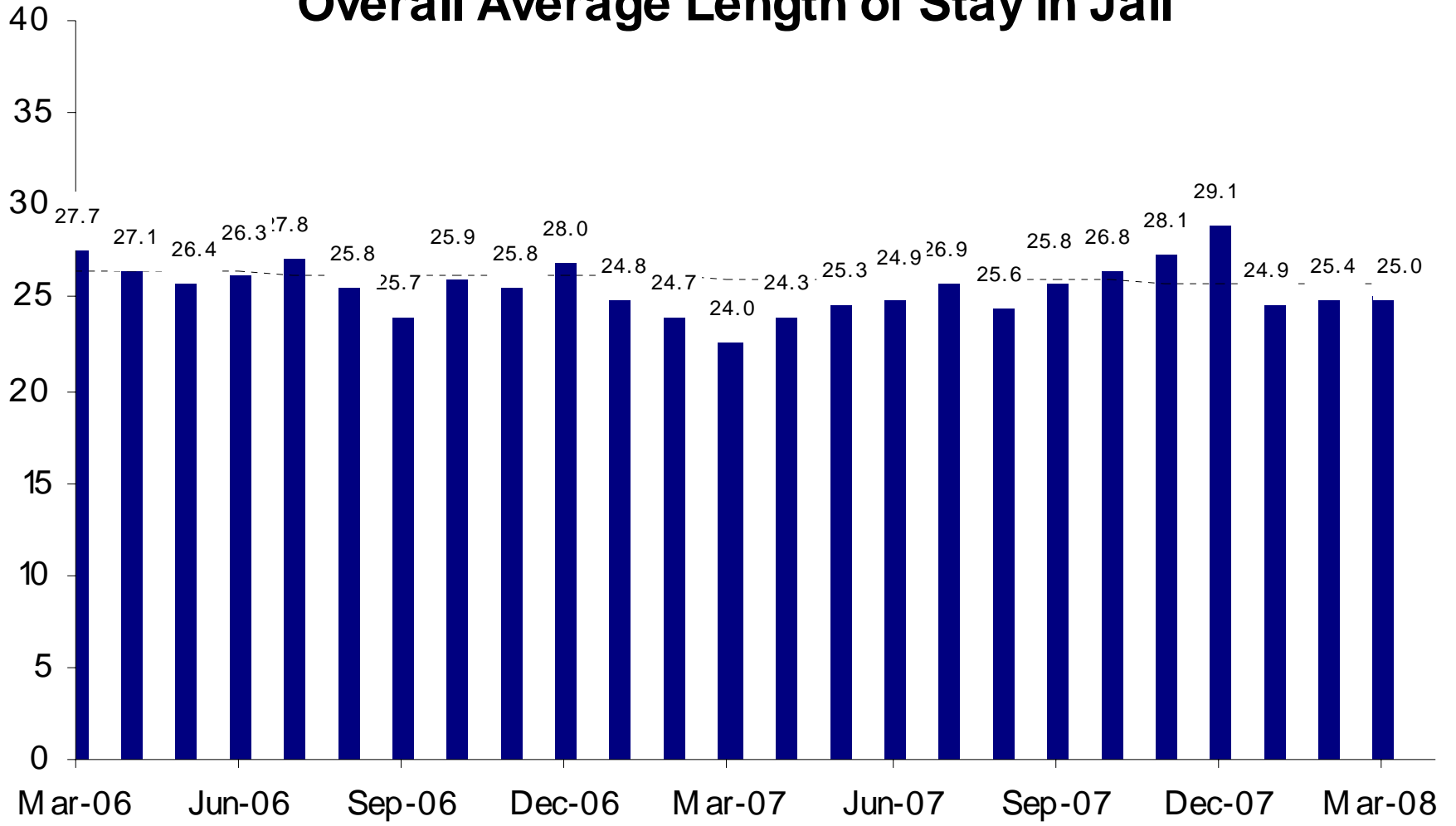
Average Daily Jail Population



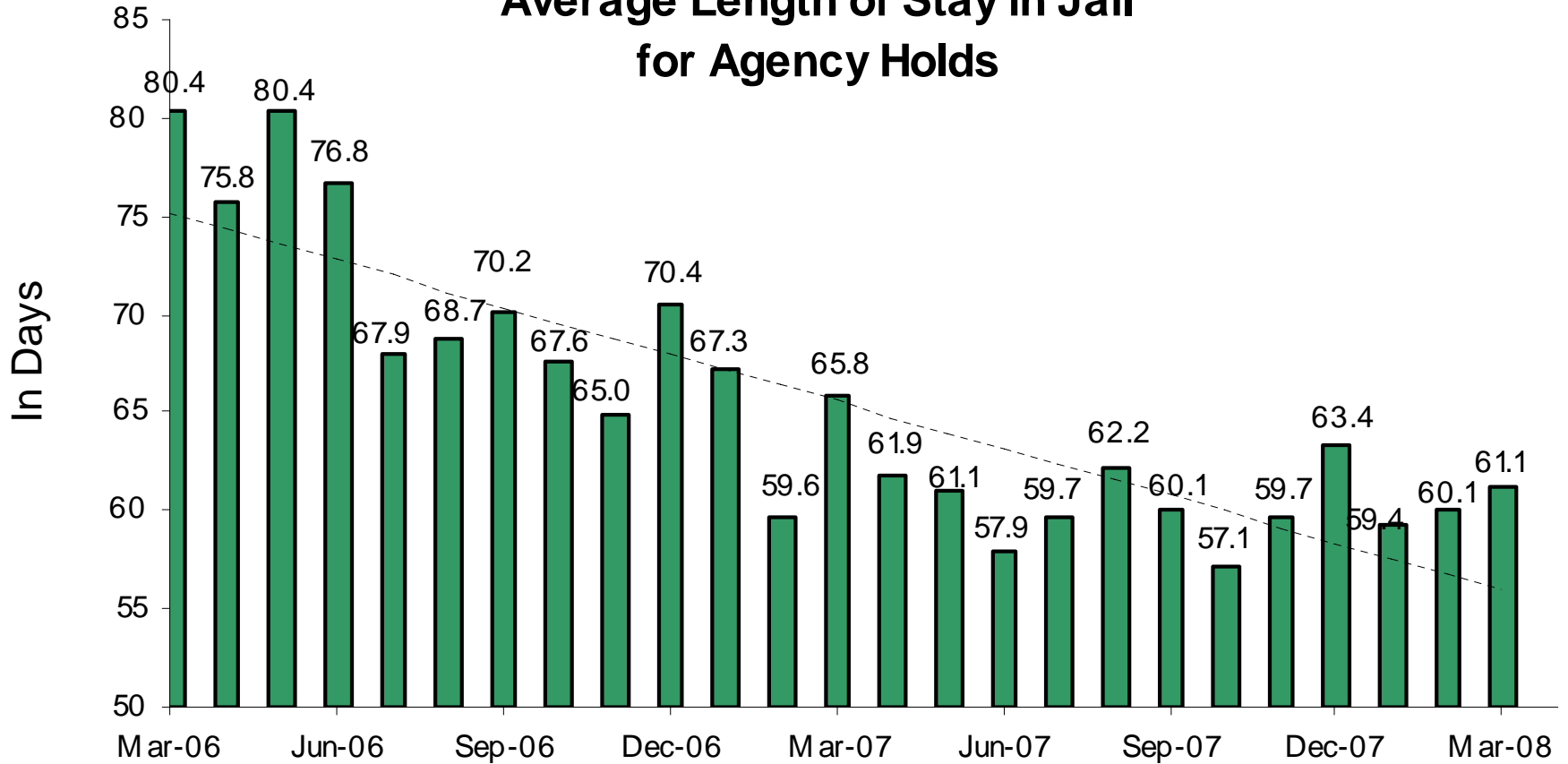
Average Daily Jail Population by Type



Overall Average Length of Stay in Jail

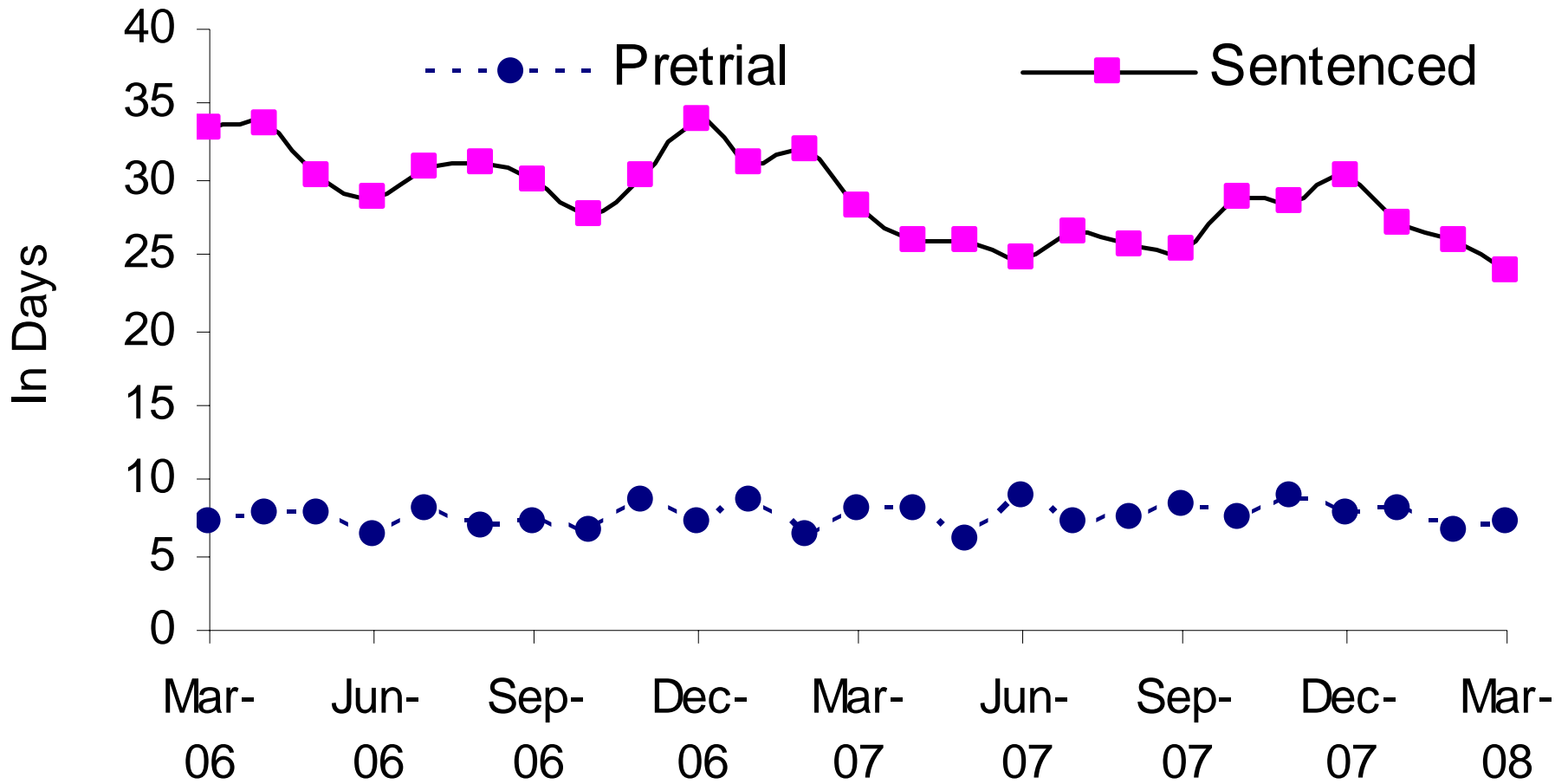


Average Length of Stay in Jail for Agency Holds



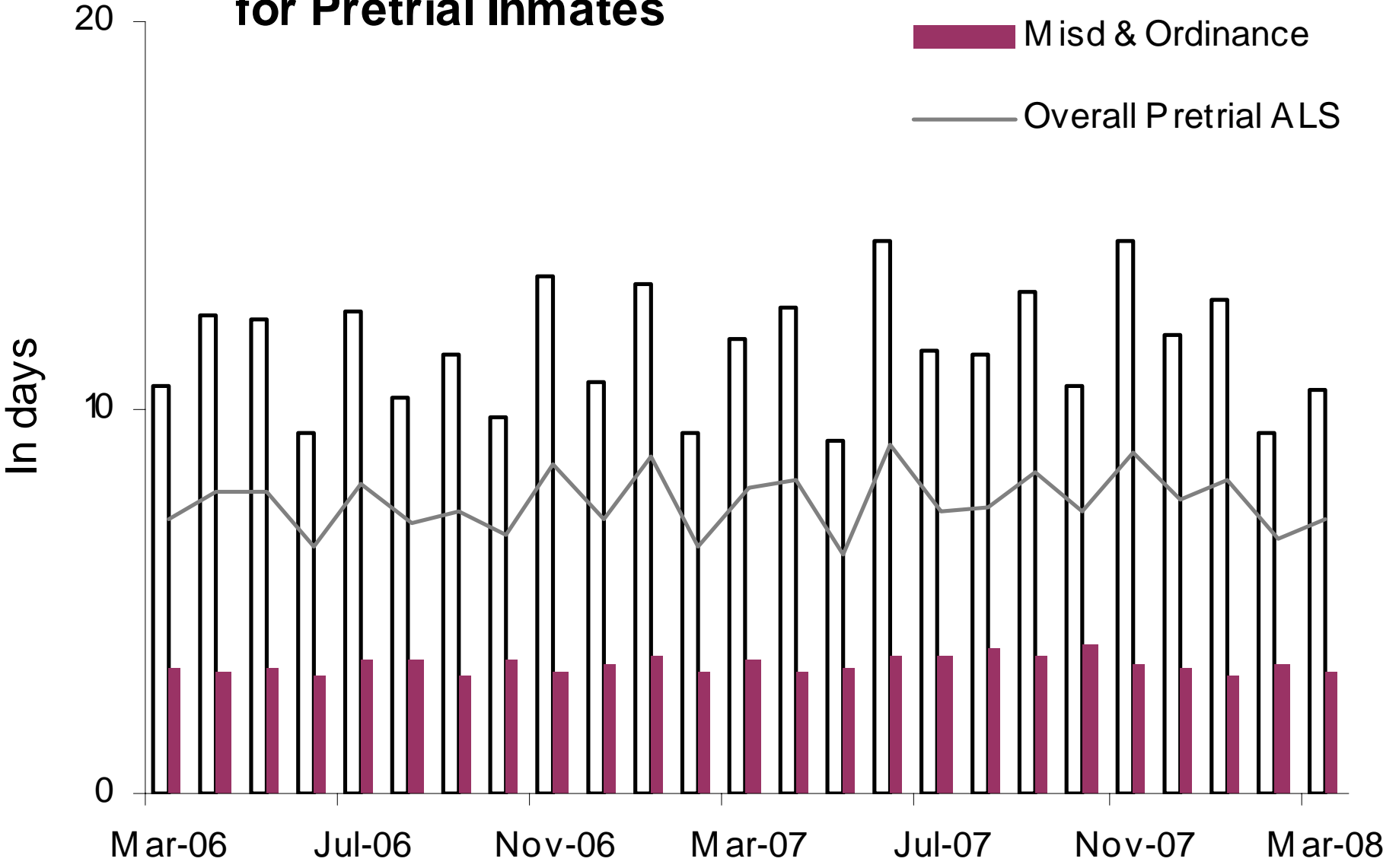
50% Dept of Corrections, 35% Federal agencies, 15% other

Average Length of Stay in Jail Pretrial vs Sentenced Population

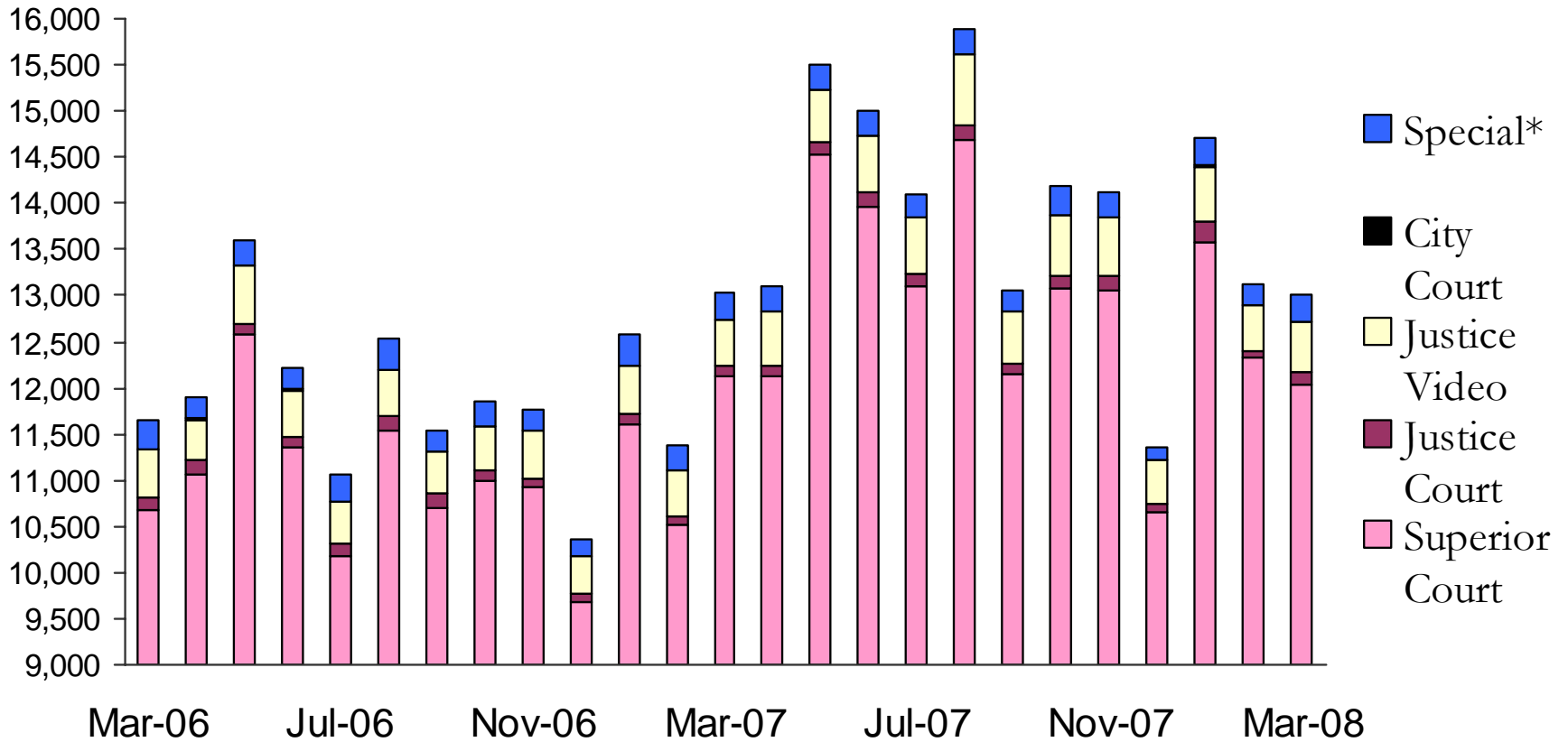


Average Length of Stay in Jail for Pretrial Inmates

Legend:
Felony (white bar)
Misd & Ordinance (maroon bar)
Overall Pretrial ALS (grey line)



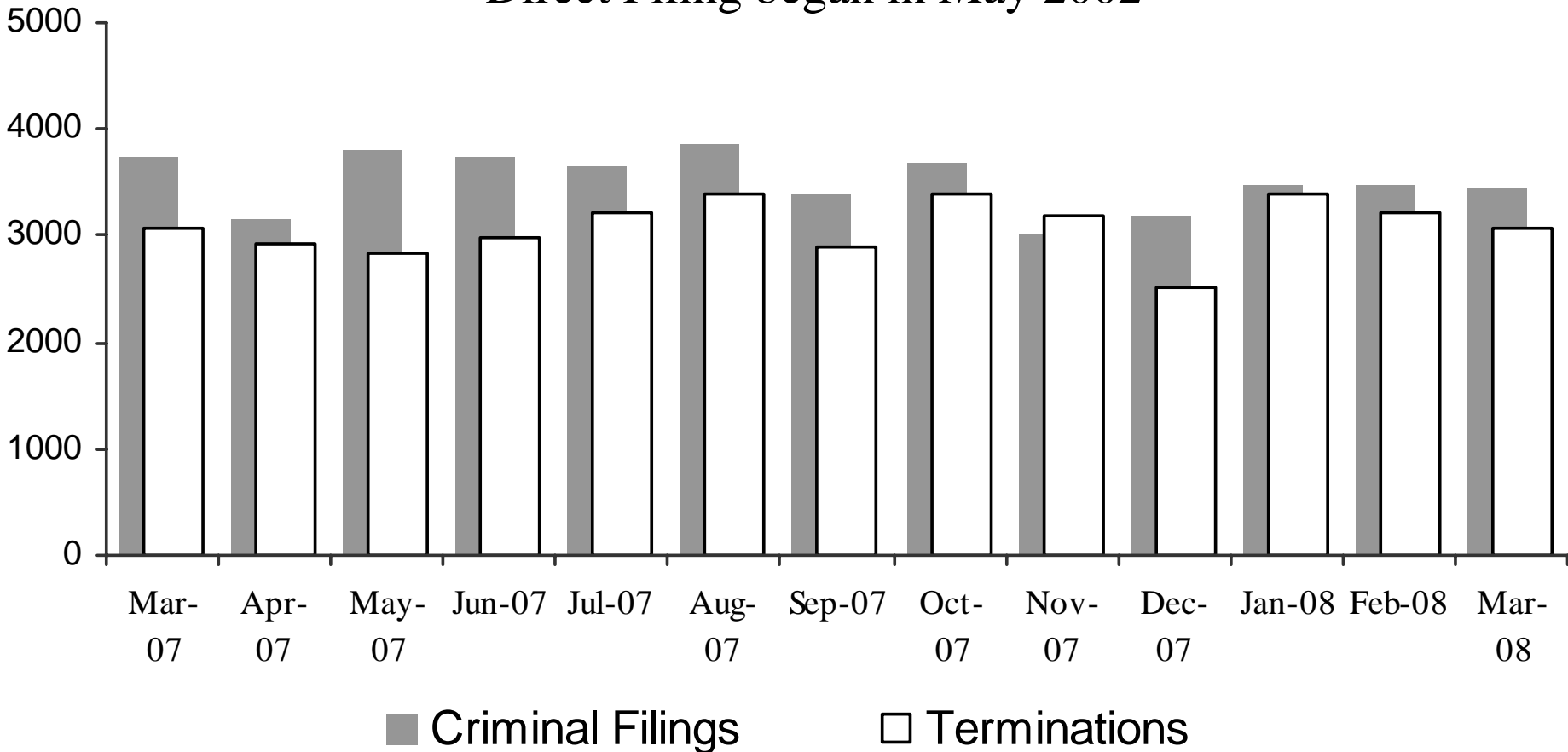
Sheriff's Office Transports for Inmate Court Appearances



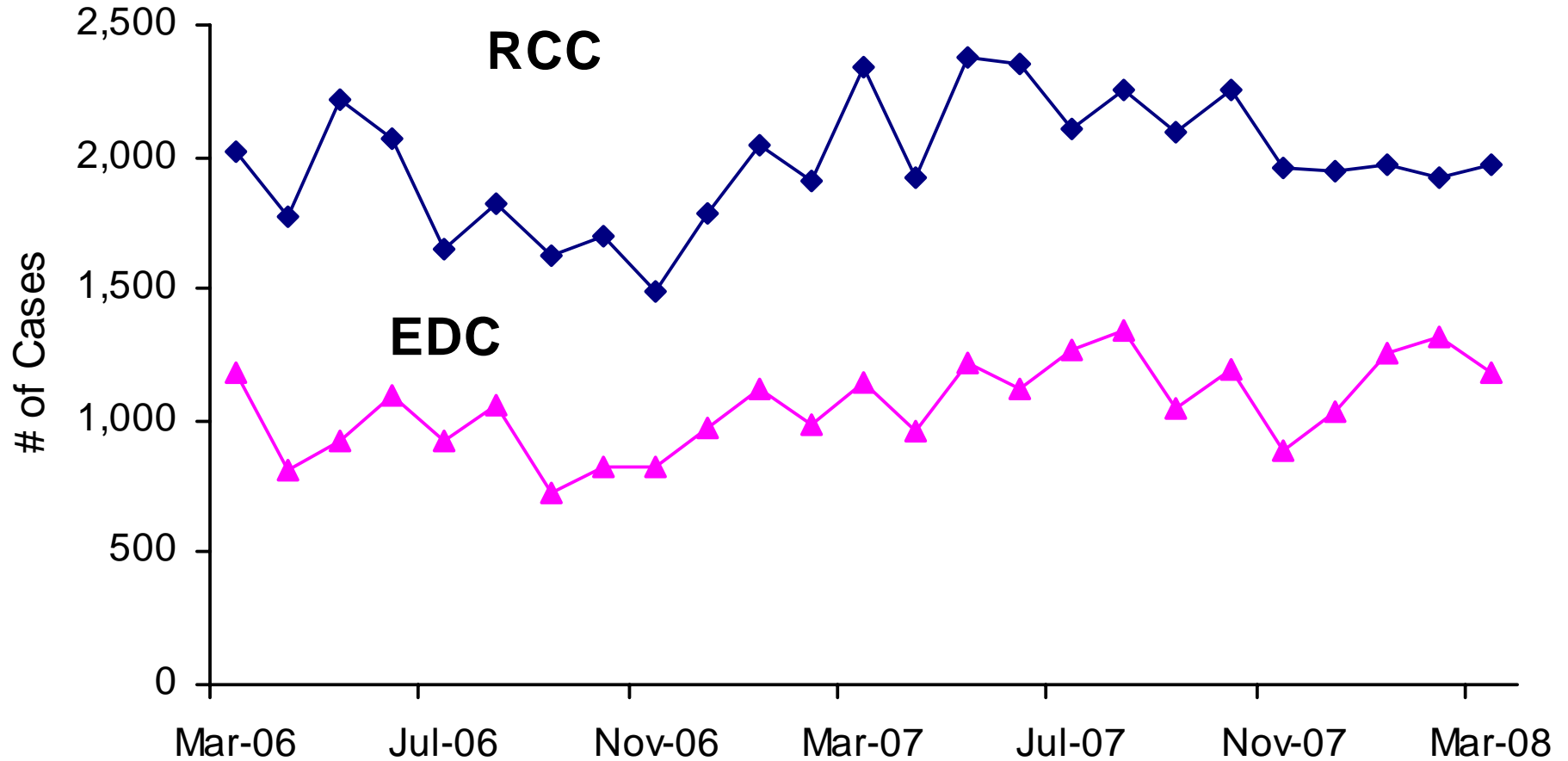
*"Special" cases include Downtown Remands, SEJD Remands, and SEJD Unscheduled.

Superior Court Filings and Terminations

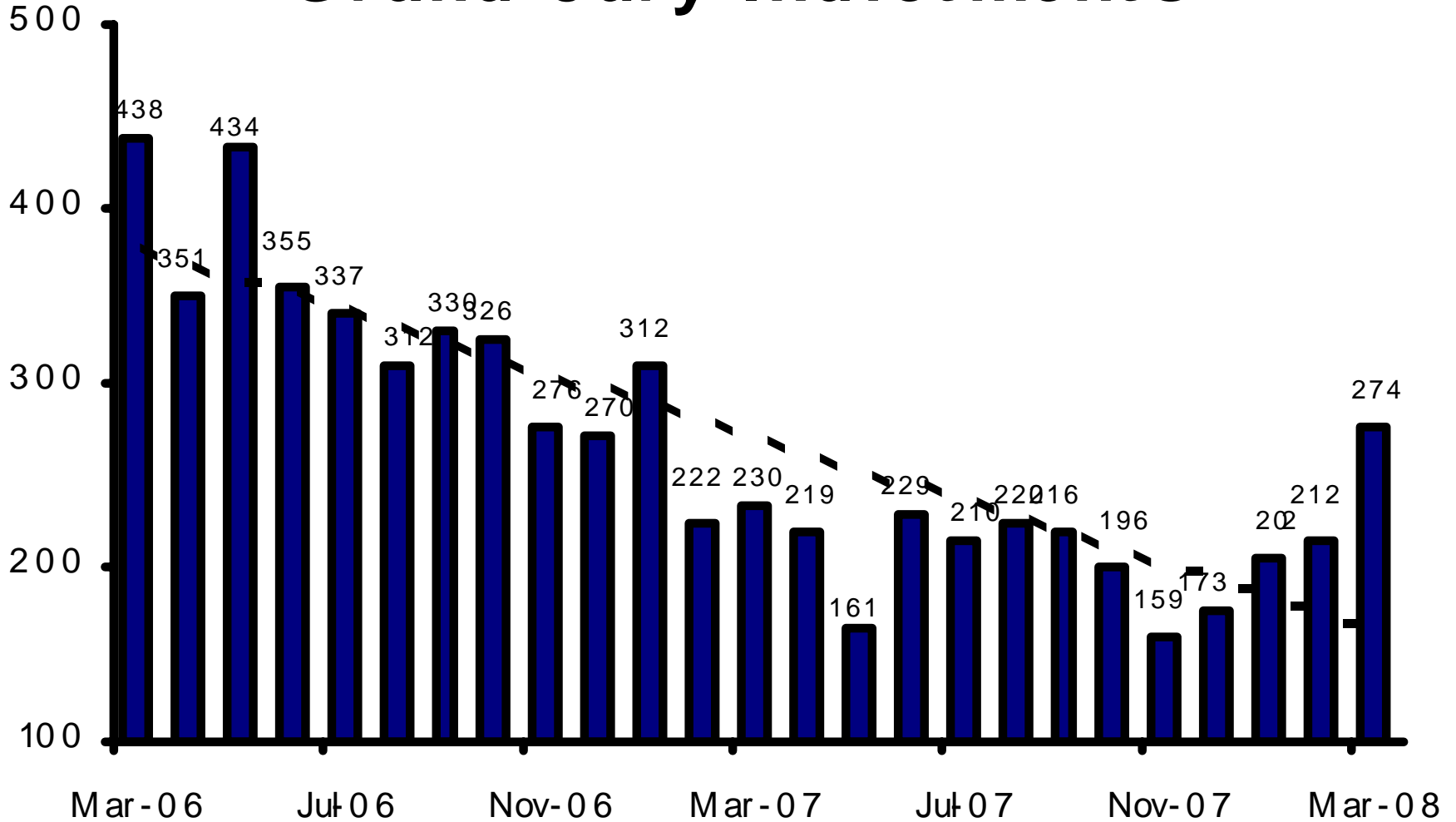
Direct Filing began in May 2002



Direct Complaints into Superior Court

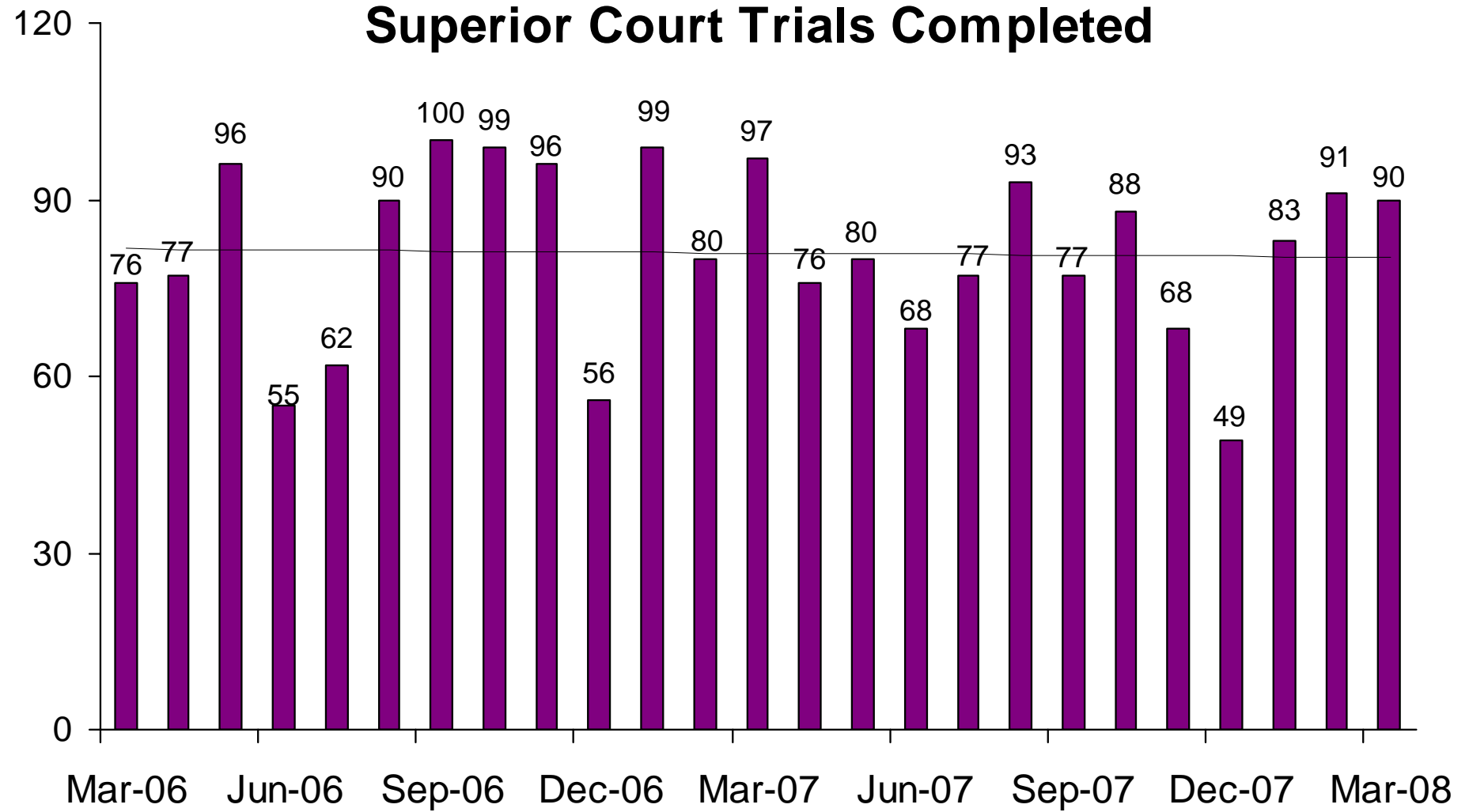


Grand Jury Indictments

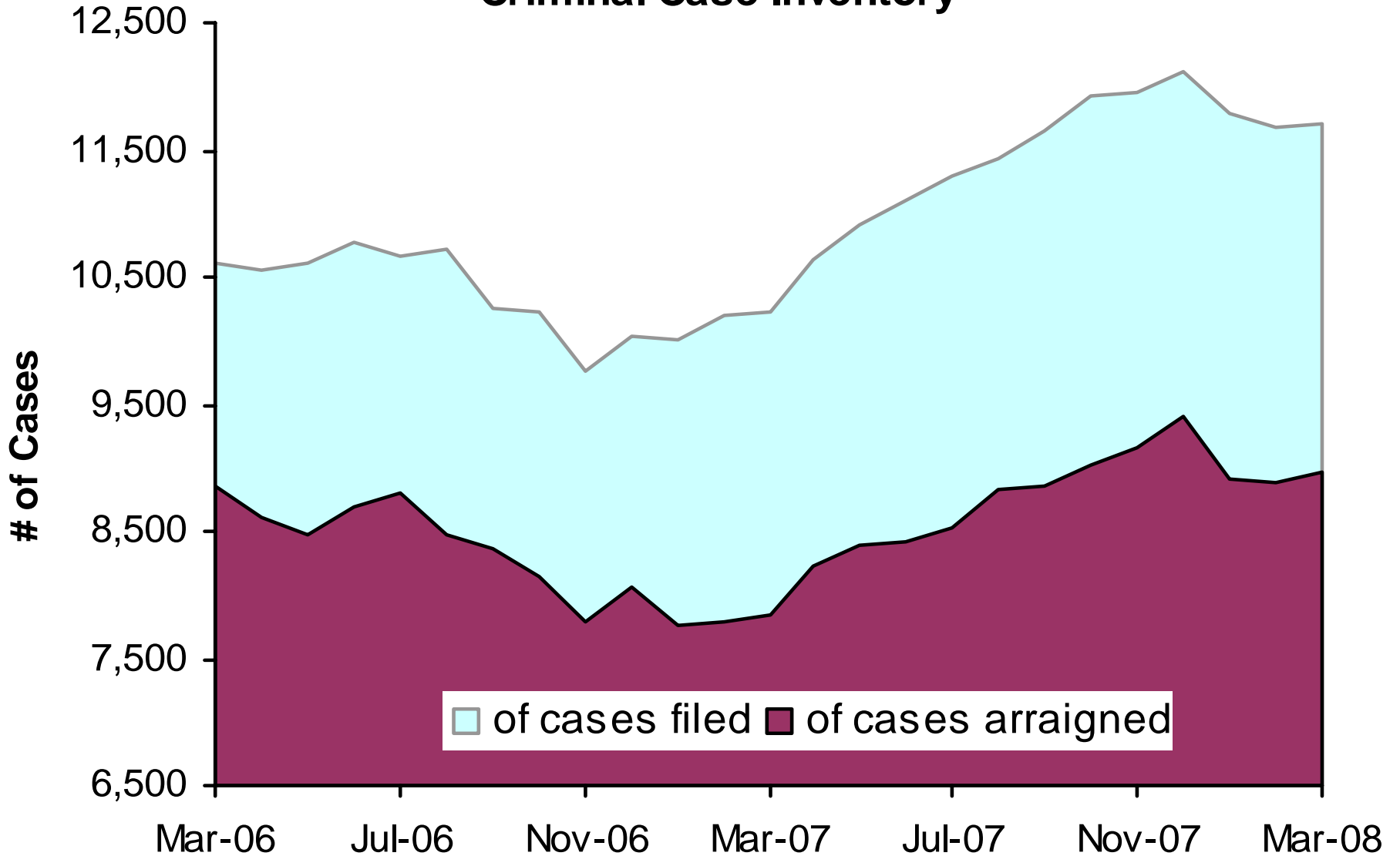


These numbers do not include notices of supervening indictments, non-EDC direct complaints, and juvenile direct complaints.

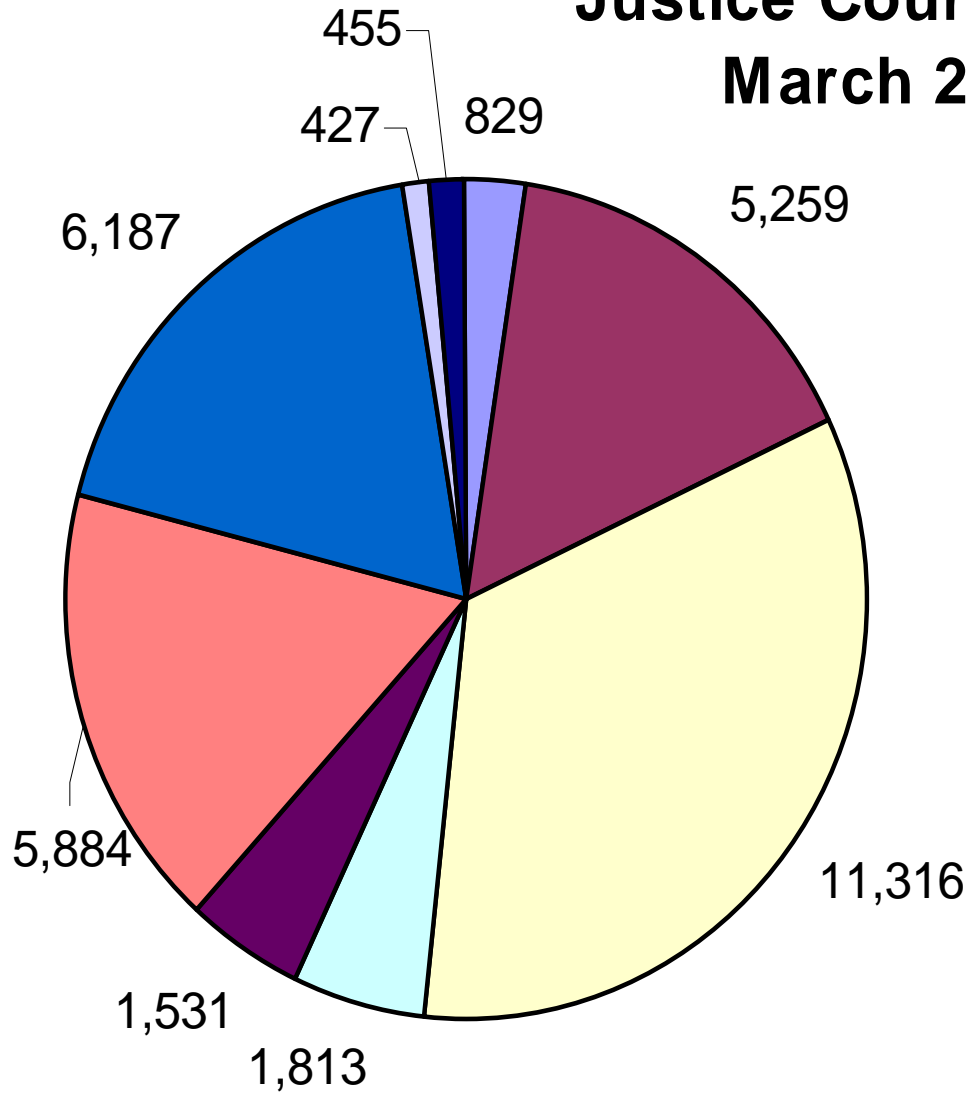
Superior Court Trials Completed



Active Pending Criminal Case Inventory

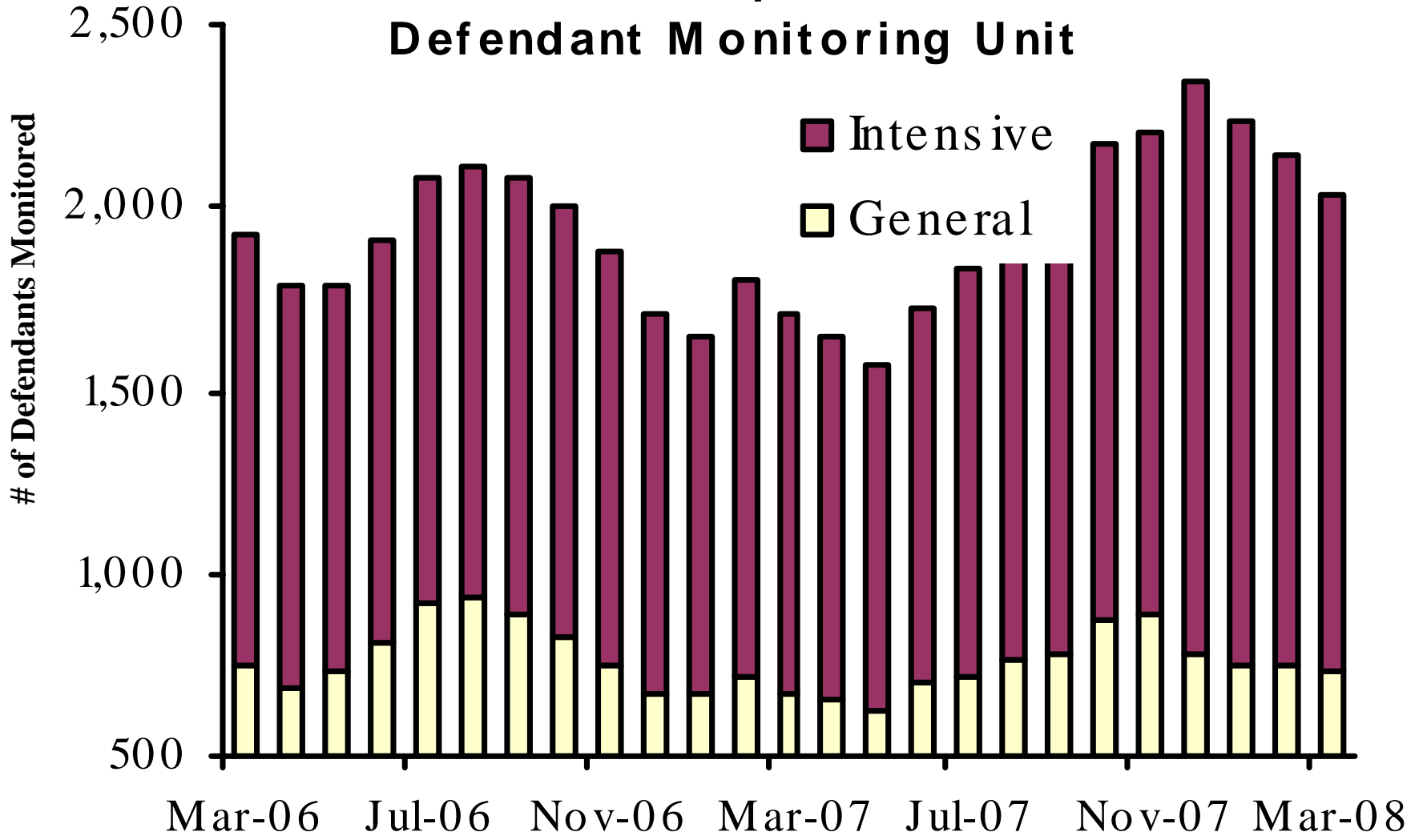


Justice Court Filings March 2008

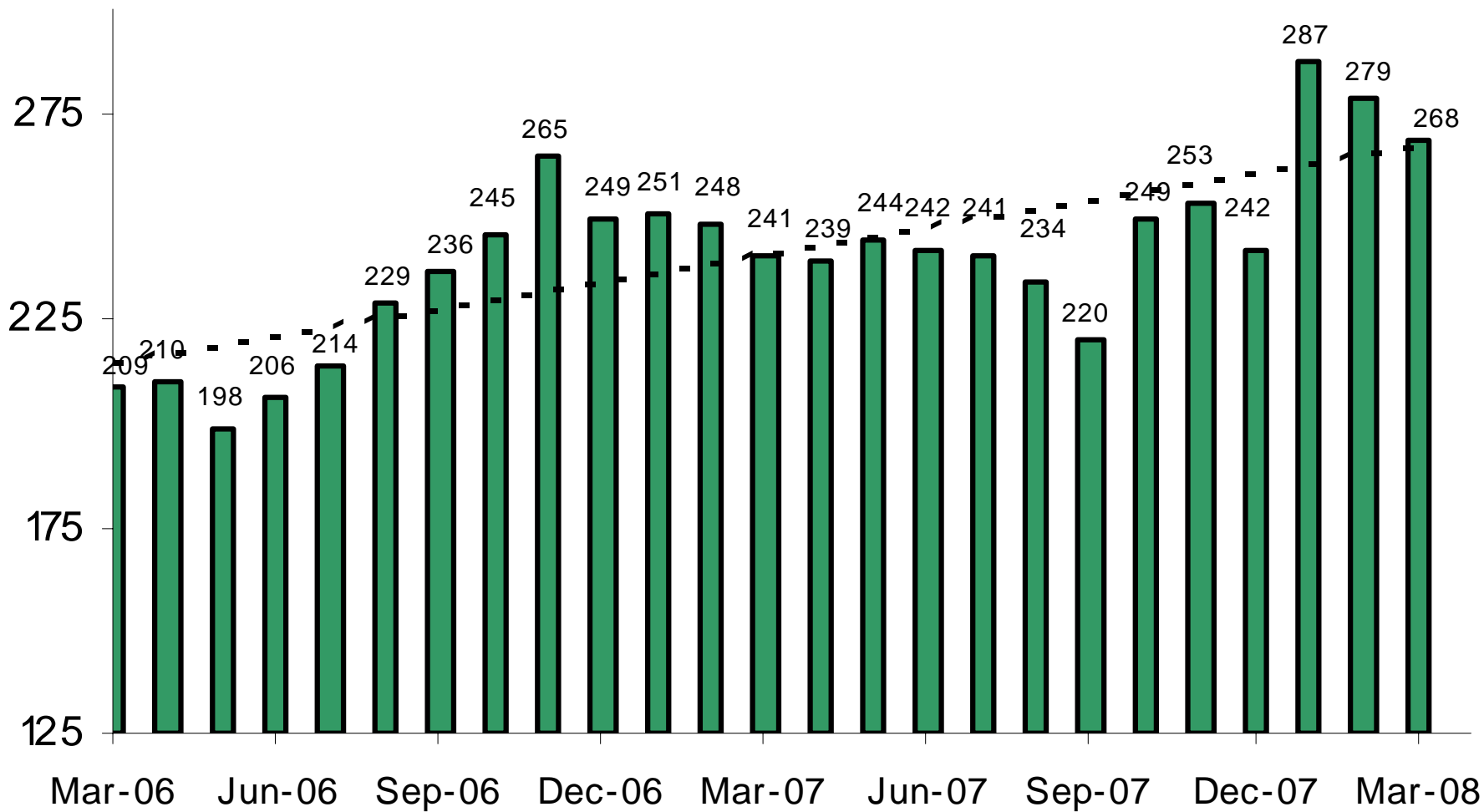


- DUI
- All other Criminal
- Traffic
- Civil Traffic
- Misdemeanor
- Small Claims
- Forcible Detainers
- Other Civil
- Orders of Protection
- Injunctions against Harrassment

Pretrial Supervision Defendant Monitoring Unit



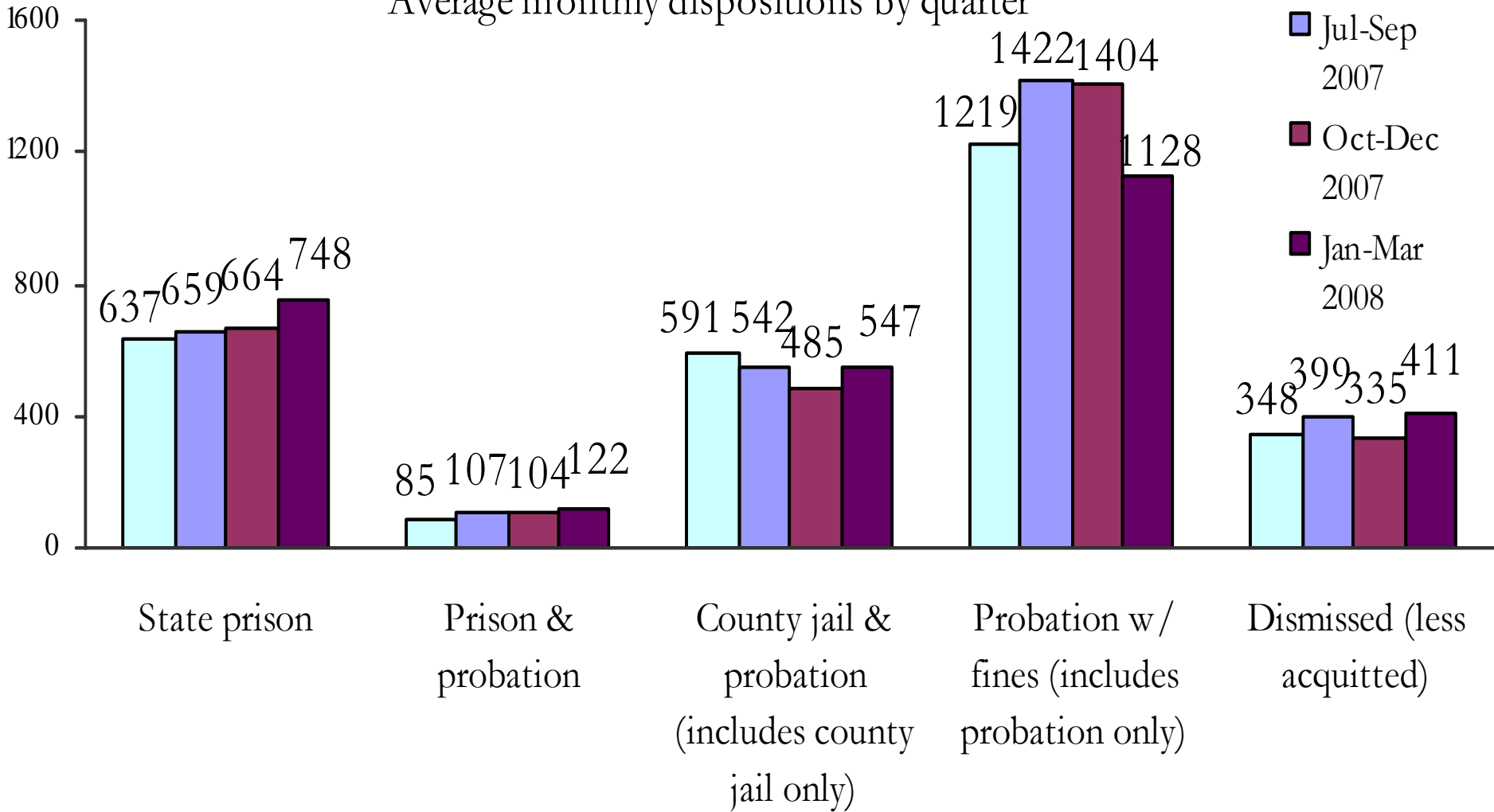
Pretrial Supervision Defendants on Electronic Monitoring



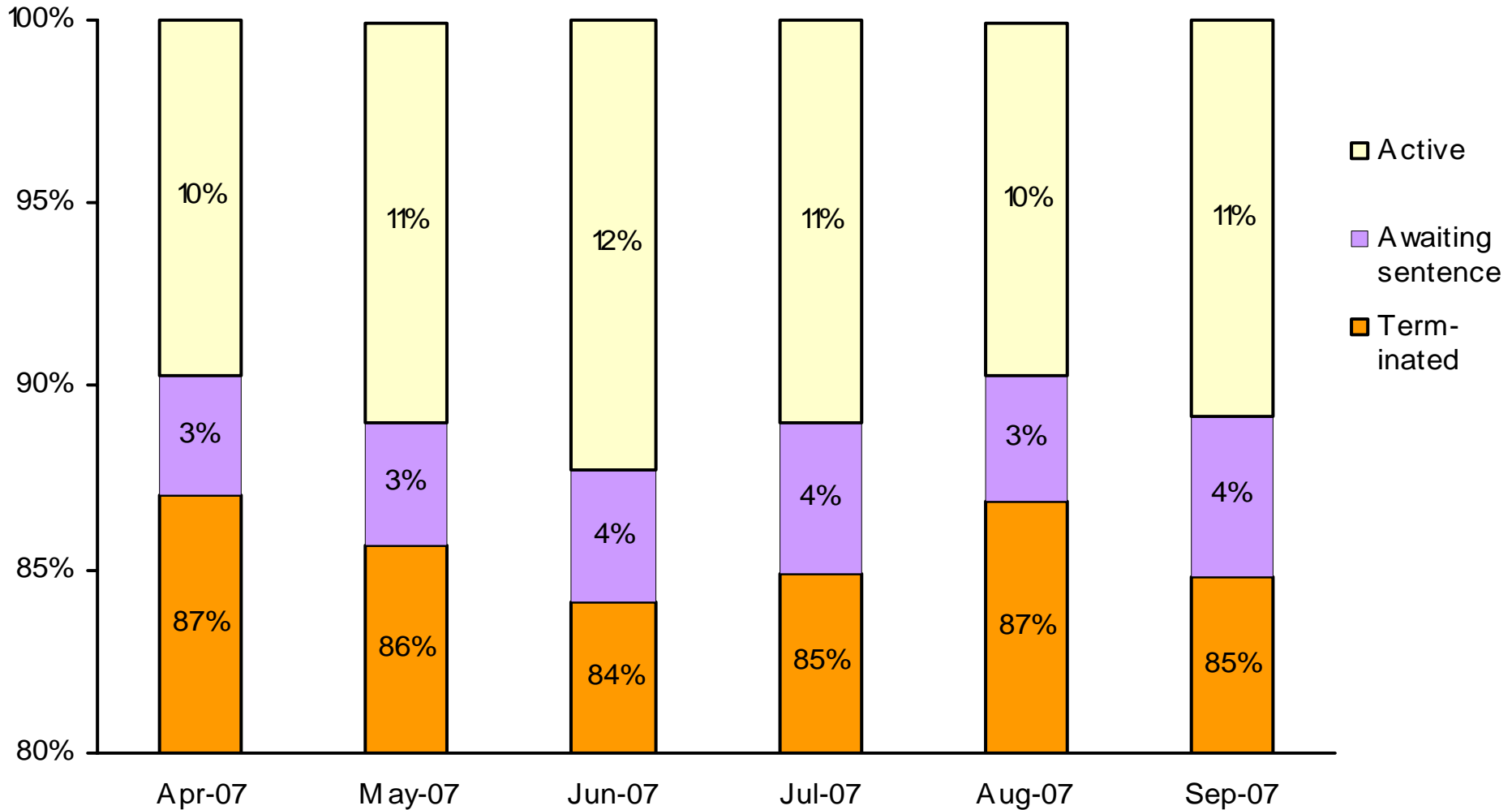
Disposition of Cases Terminated

Average monthly dispositions by quarter

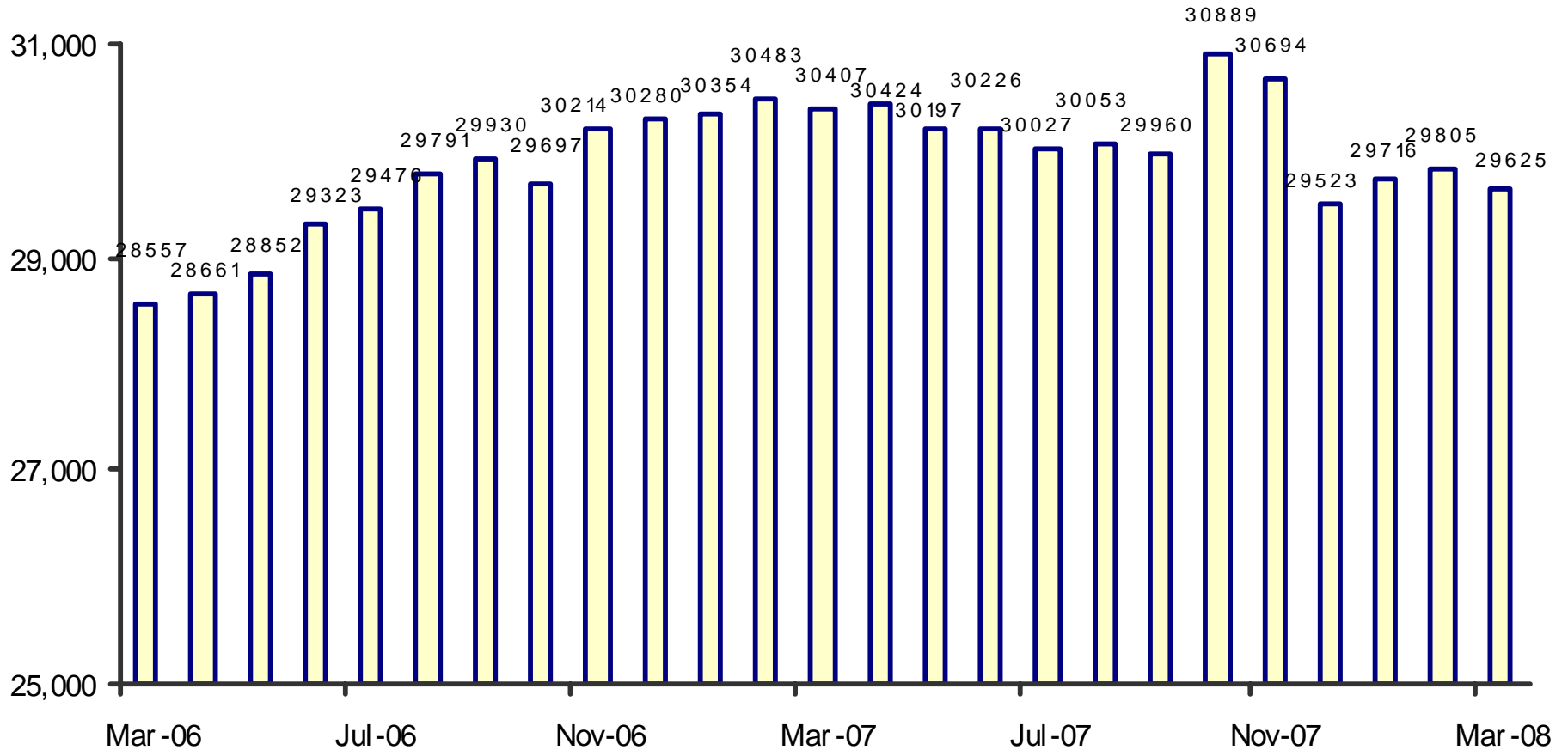
- Apr-Jun 2007
- Jul-Sep 2007
- Oct-Dec 2007
- Jan-Mar 2008



Status of Cases After 180 Days

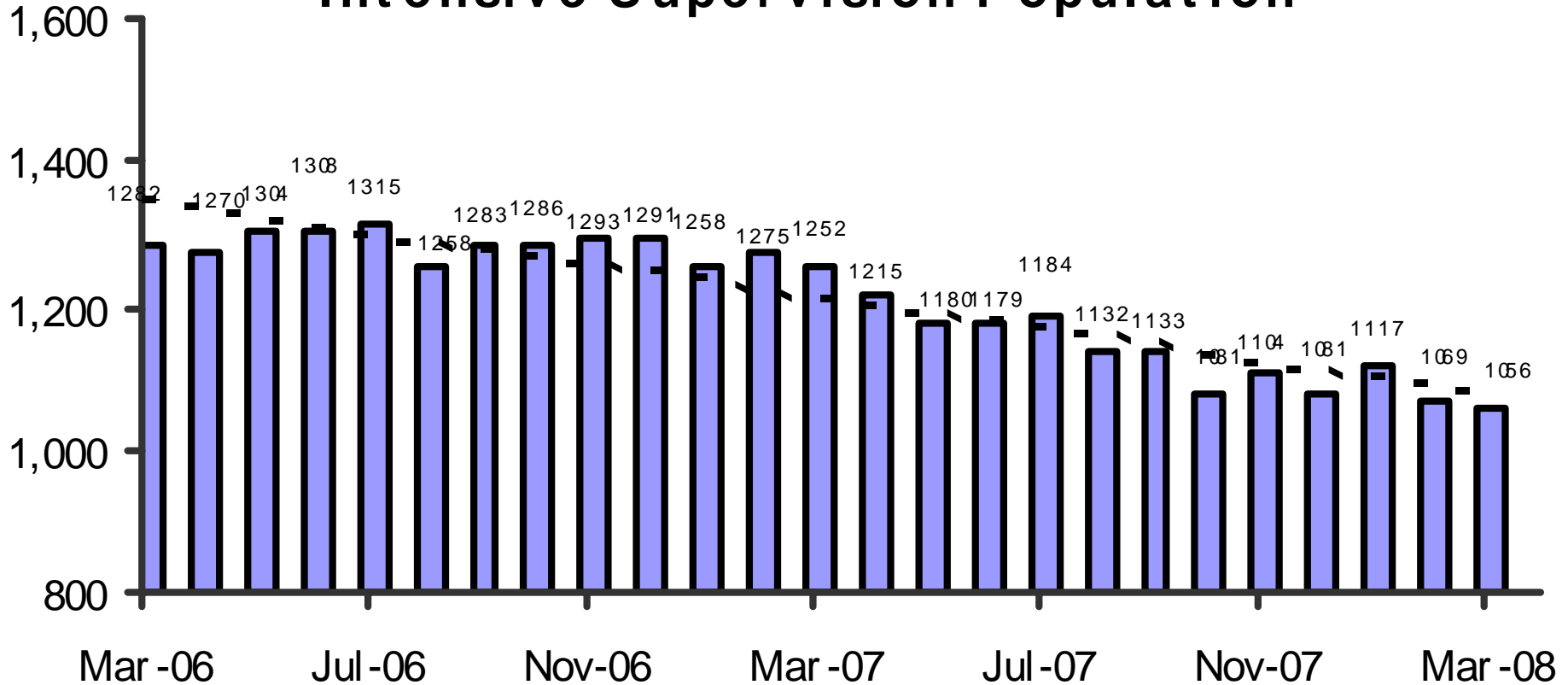


Adult Probation Standard Supervision Population

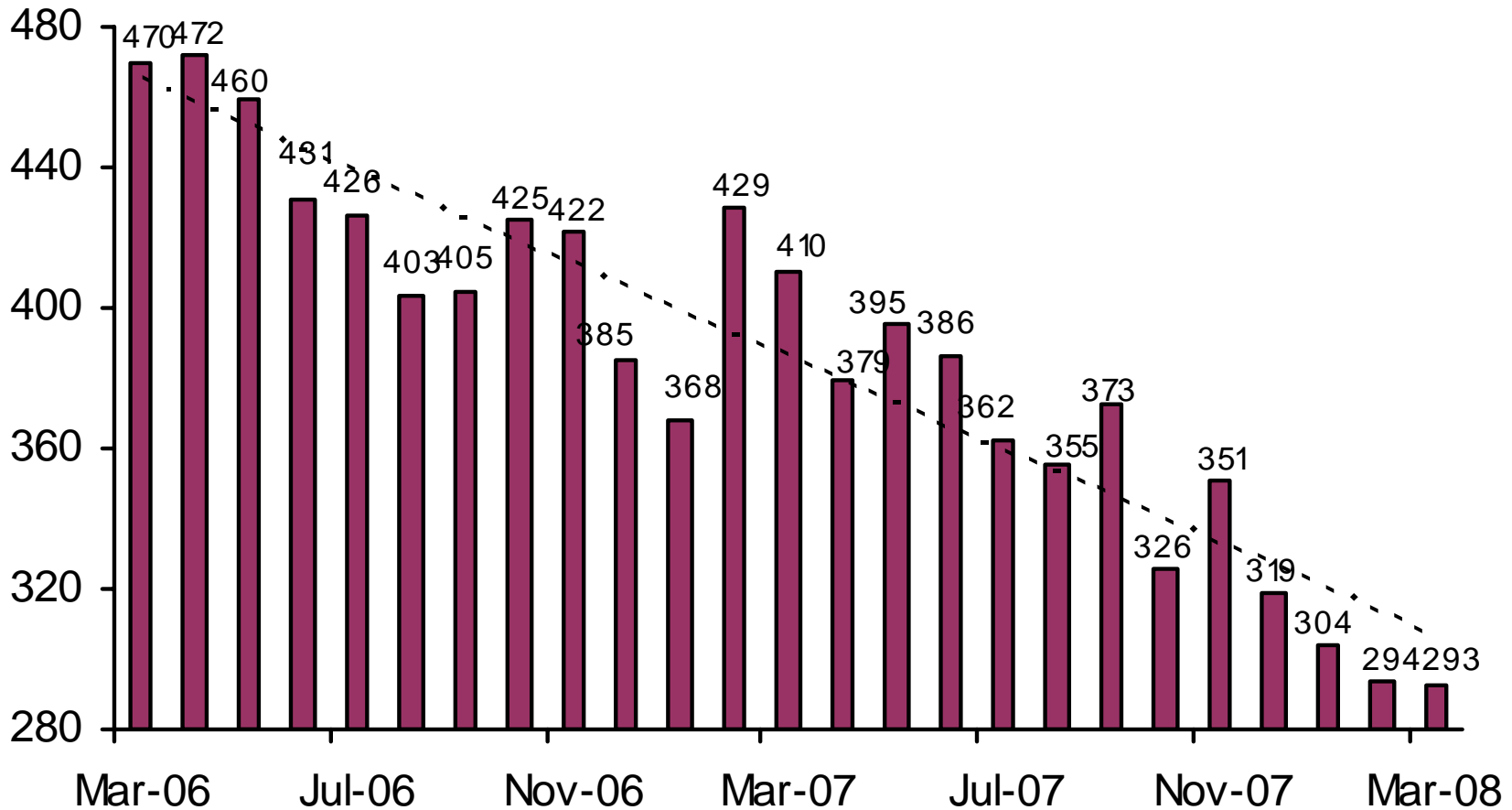


This population includes Interstate Compact and Report and Review caseloads, as reported to the Board of Supervisors and JLBC.

Adult Probation Intensive Supervision Population

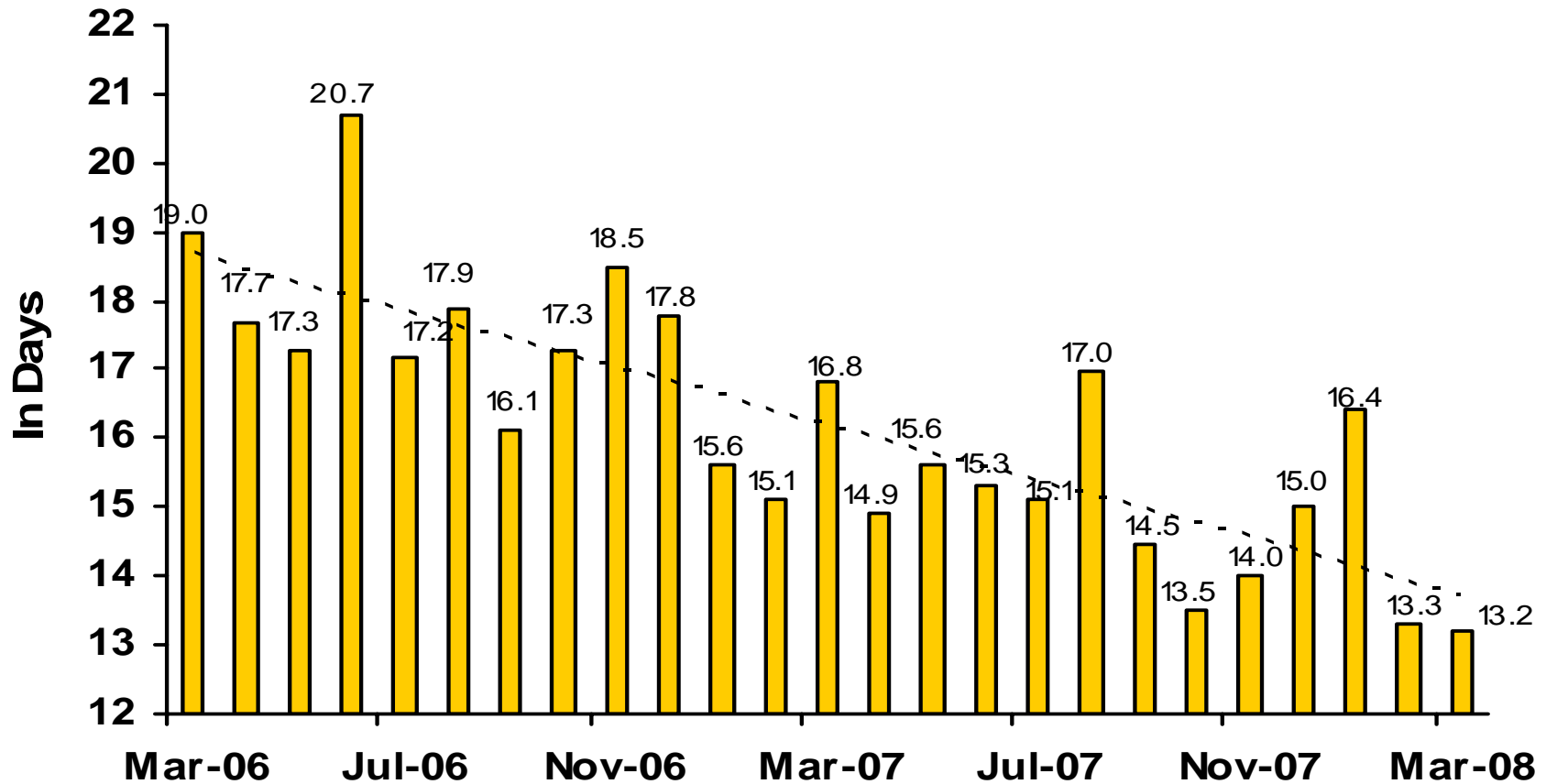


Juvenile Detention Average Daily Population



July 07 data through July 27, 2007 only. July 2007 through October 2007 transitional months from JOLTS to iCIS.

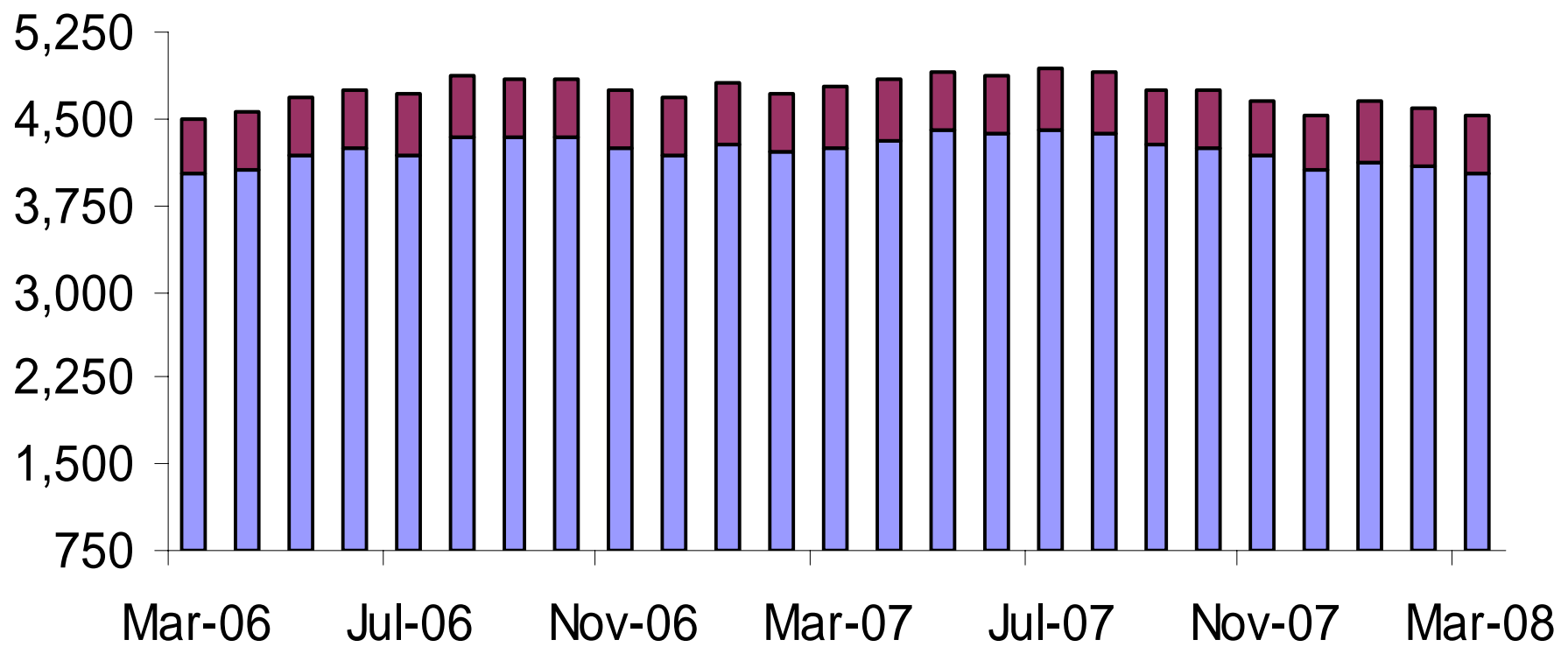
Juvenile Detention Average Length of Stay



July 07 data through July 27, 2007 only. July 2007 through October 2007 transitional months from JOLTS to iCIS

Juvenile Probation

■ # on standard probation ■ # on intensive probation



July 07 data through July 27, 2007 only. July 2007 through October 2007 transitional months from JOLTS to iCIS.