



Maricopa County

Criminal Justice System

Monthly Performance Report for May 2006

Monthly Averages						
	FY 2002	FY 2003	FY 2004	FY 2005	FY 2006	May 2006
Sheriff's Office						
Bookings	9,641	9,875	10,176	9,975	10,432	11,096
Average Daily Population	7,557	8,044	8,657	9,054	9,762	9,449
Avg Length of Stay (in days)	23.8	24.4	26.0	27.7	28.6	26.4
Superior Court						
Filings	2,515	2,904	3,062	2,996	3,218	3,651
Terminations	2,367	2,330	2,612	2,758	2,976	3,556
Clearance Rate	94%	80%	85%	93.0%	92.7%	97.4%
Active Pending Inventory	7,419	8,123	9,106	10,002	10,866	10,615
Trials Completed	61	59	42	51	69	96
Trial Rate	2.4%	2%	1.4%	1.7%	2.2%	2.6%
Adult Probation						
Pretrial General Supervision	609	700	990	978	771	739
Pretrial Intensive Supervision	356	331	657	816	1,076	1,050
Pretrial Electronic Monitoring	78	97	153	164	188	198
Standard Probation Supervision	24,448	25,400	25,055	26,091	27,767	28,852
Intensive Probation Supervision	1,564	1,267	1,079	1,456	1,322	1,304
Juvenile Detention and Probation						
Avg Daily Detention Pop	407	401	431	443	433	460
Avg Length of Stay (in days)	14.7	15.1	16.6	18.7	17.9	17.3
Standard Prob.	4,726	4,387	4,232	4,108	4,039	4,165
Intensive Prob.	666	659	518	547	527	518

Criminal Justice System News

Adult Incarceration: Bookings increased in May, going over 11,000 for the first time ever. However, ADP decreased from 9,584 to 9,449 between April and May. This is the lowest ADP since May 2005 (9,335). All populations were down: pretrial from 6,148 to 6,103, sentenced from 2,853 to 2,807, and holds from 525 to 484. Overall ALOS fell from 27.1 days in April to 26.4 days in May, the lowest since January 2005 (25.9 days).

Agency hold ALOS increased, from 75.8 to 80.4 days. ALOS for pretrial and sentenced populations decreased, pretrial from 7.9 to 7.8 days and sentenced from 33.6 to 30.3 days. For the pretrial population, felony ALOS decreased from 12.4 to 12.3 days, while misdemeanor ALOS remained 3.2 days (the same since February 2006).

Filings & Case Processing: Criminal filings and terminations increased in May, filings from 2,979 to 3,651 and terminations from 3,016 to 3,556. The termination rate was 97.4%. The active pending case inventory increased slightly from 10,565 to 10,615. Filings into the RCC and EDC increased. RCC numbers went from 1,769 to 2,219, while EDC numbers went from 809 to 929. Grand Jury indictments (not including notices of supervening indictments, non-EDC direct complaints, and juvenile direct complaints) increased from 351 to 434.

Adult Probation: Levels of pretrial general supervision increased from 690 to 739. Levels of intensive and electronic monitoring supervision decreased – intensive from 1,091 to 1,050 and electronic from 210 to 198.

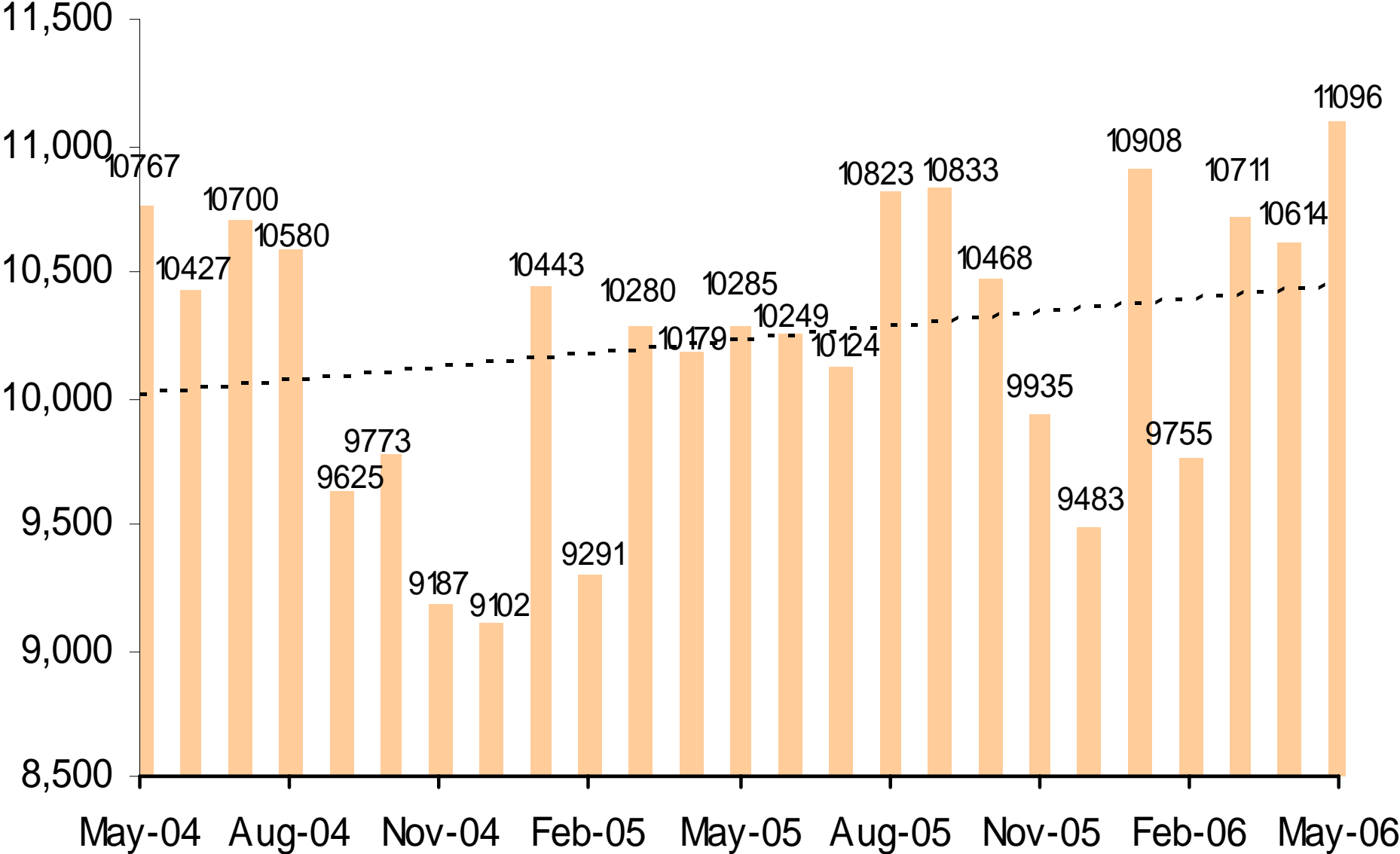
Levels of standard and intensive probation supervision increased from April to May; standard from 28,661 to 28,852 and intensive from 1,270 to 1,304.

Juvenile Detention and Probation: The Average Daily Population decreased from 472 in April to 460 in May. ALOS decreased slightly from 17.7 to 17.3 days. Electronic monitoring increased from 88 to 92. Home detention increased from 268 to 275 (the highest since Jan. 1999–282).

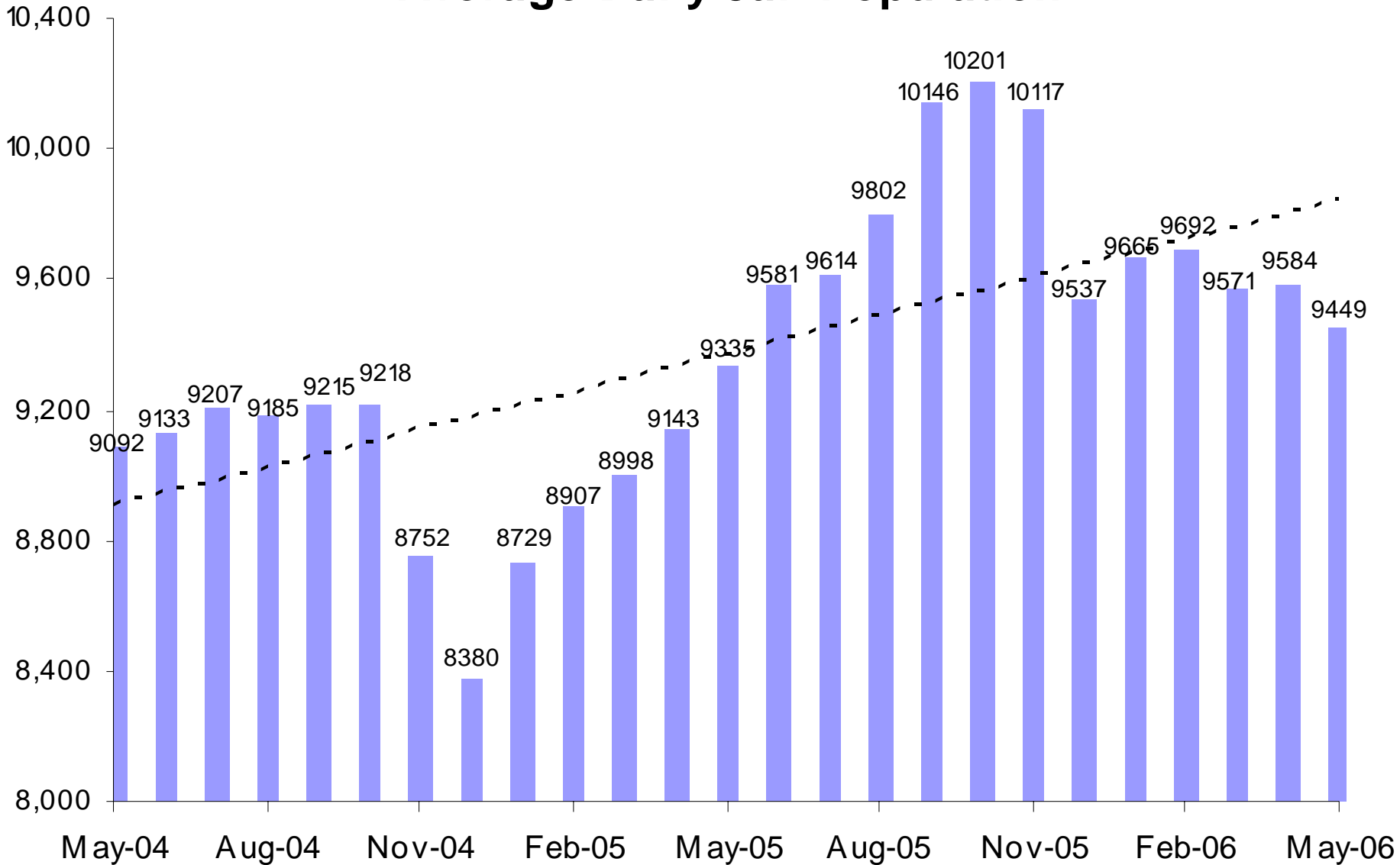
Levels of juvenile standard and intensive probation increased. Standard went from 4,061 to 4,165, while intensive went from 503 to 518.

A criminal justice system-wide goal is to enhance the utility and timeliness of management information on case processing, in an effort to help agencies effectively address current events. An interagency committee of McJustice meets regularly to accomplish this and develop this report. **Input from readers is welcomed.** Please contact Amy Rex at rexa@mail.maricopa.gov or 602-506-1310.

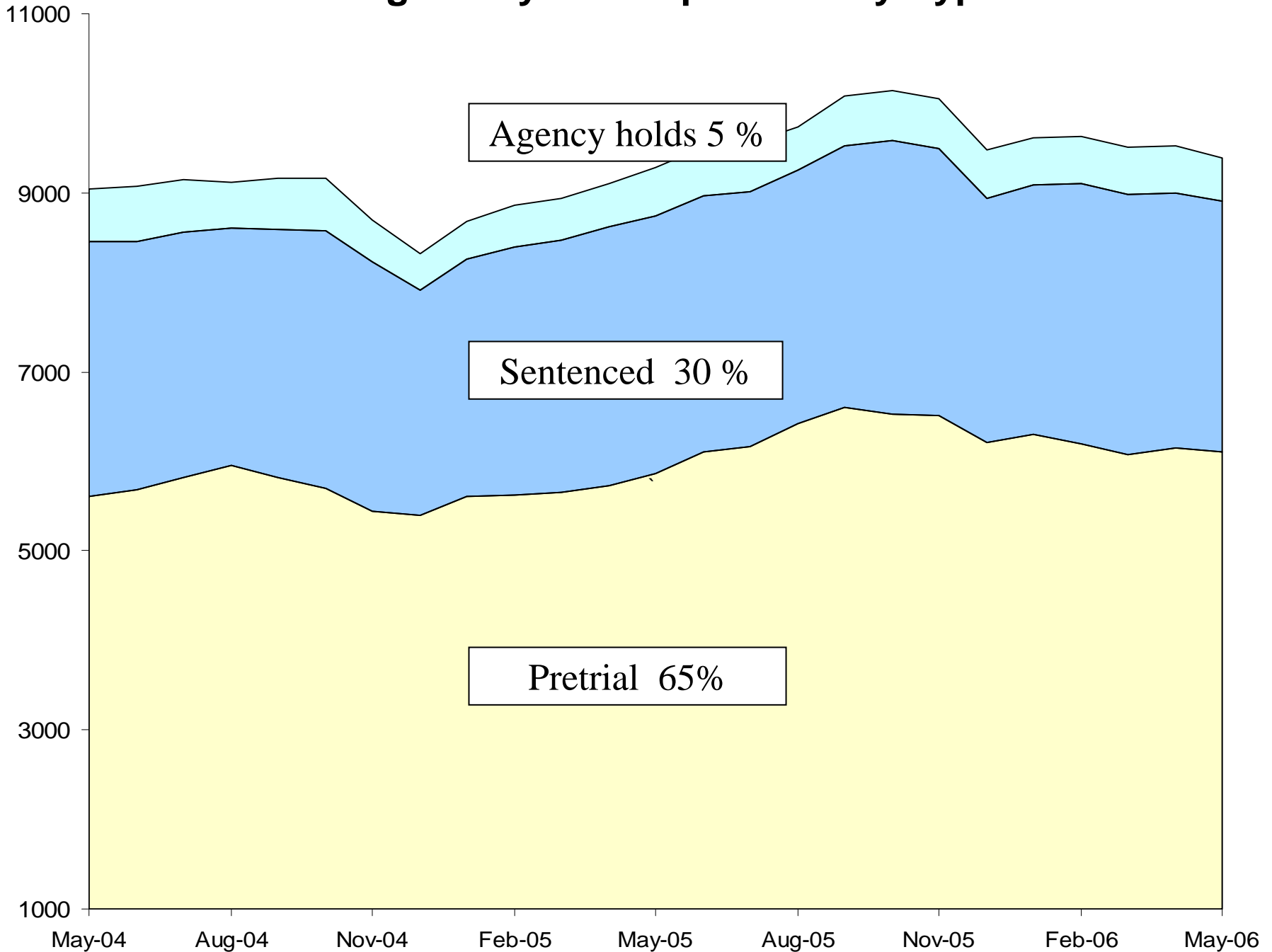
Jail Bookings



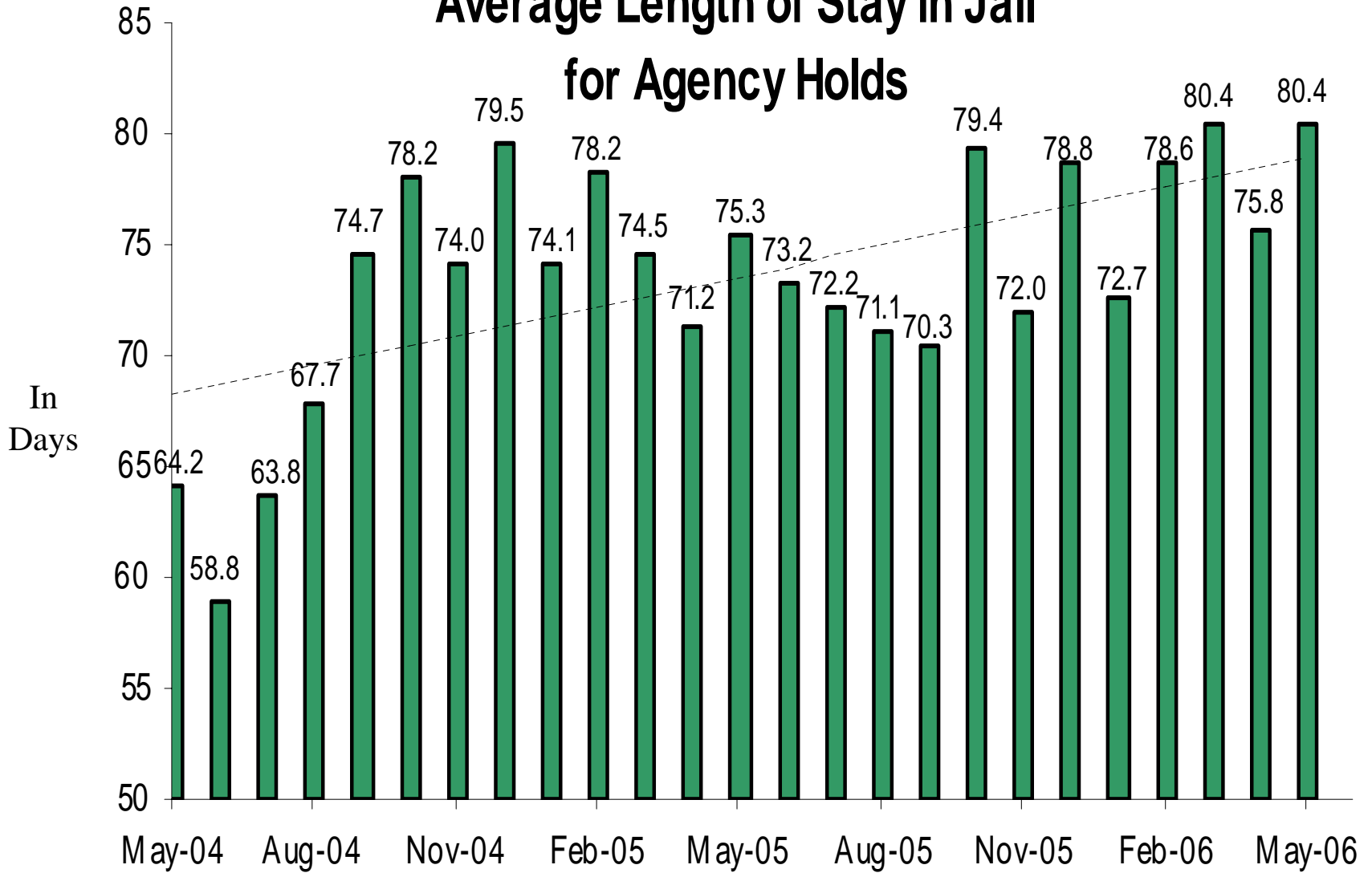
Average Daily Jail Population



Average Daily Jail Population by Type

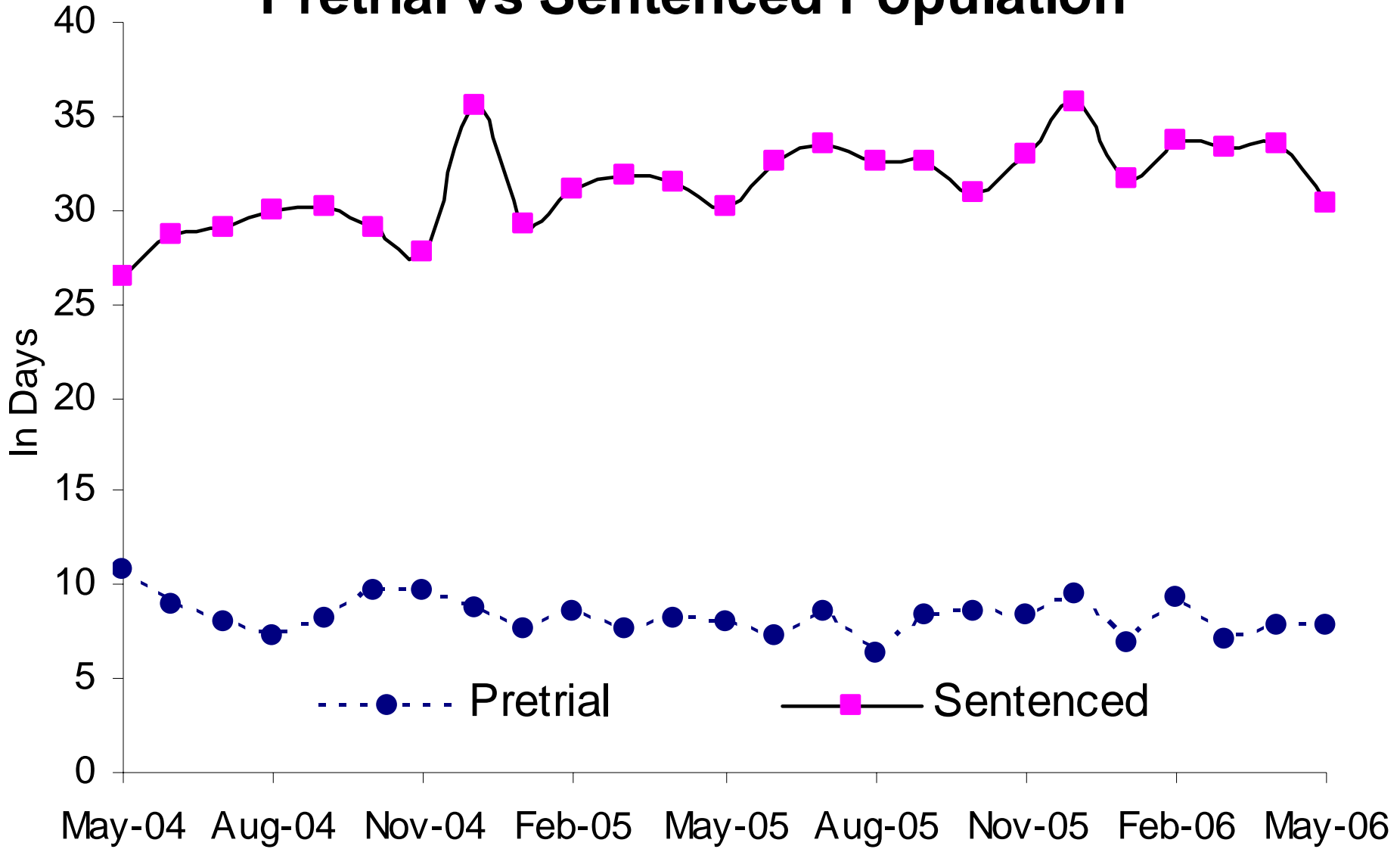


Average Length of Stay in Jail for Agency Holds

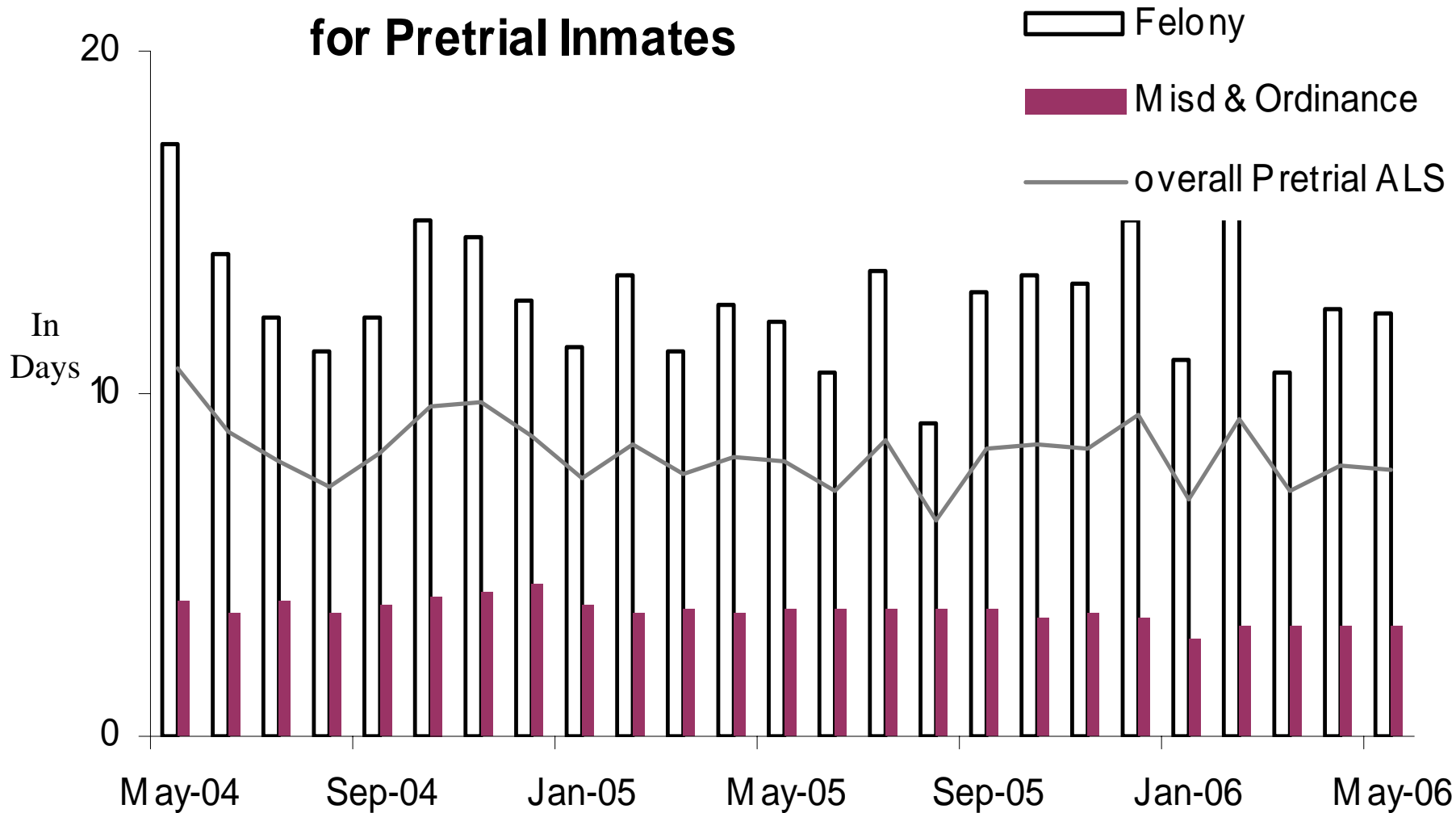


76% Dept of Corrections, 12% Federal agencies, 13% other

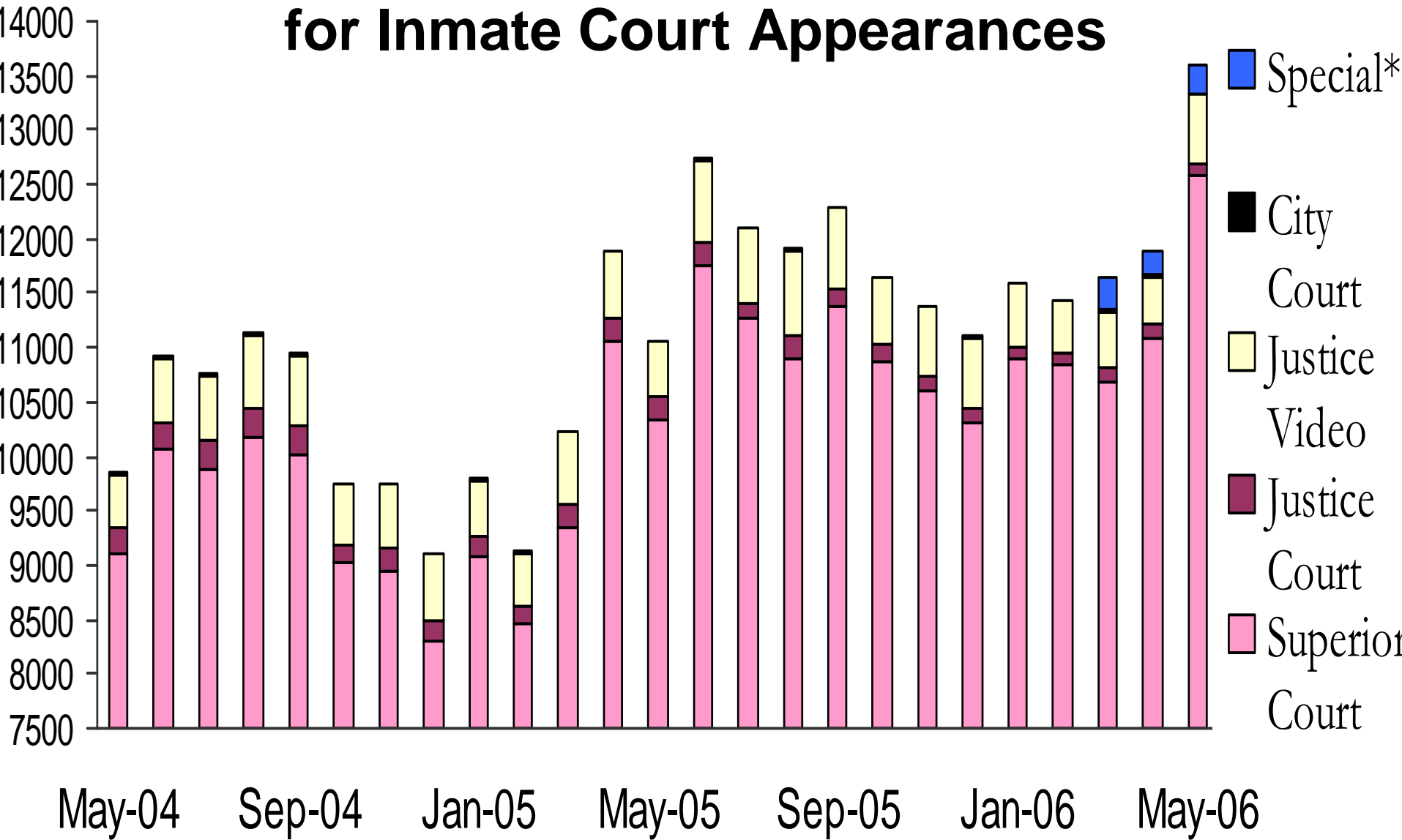
Average Length of Stay in Jail Pretrial vs Sentenced Population



Average Length of Stay in Jail for Pretrial Inmates



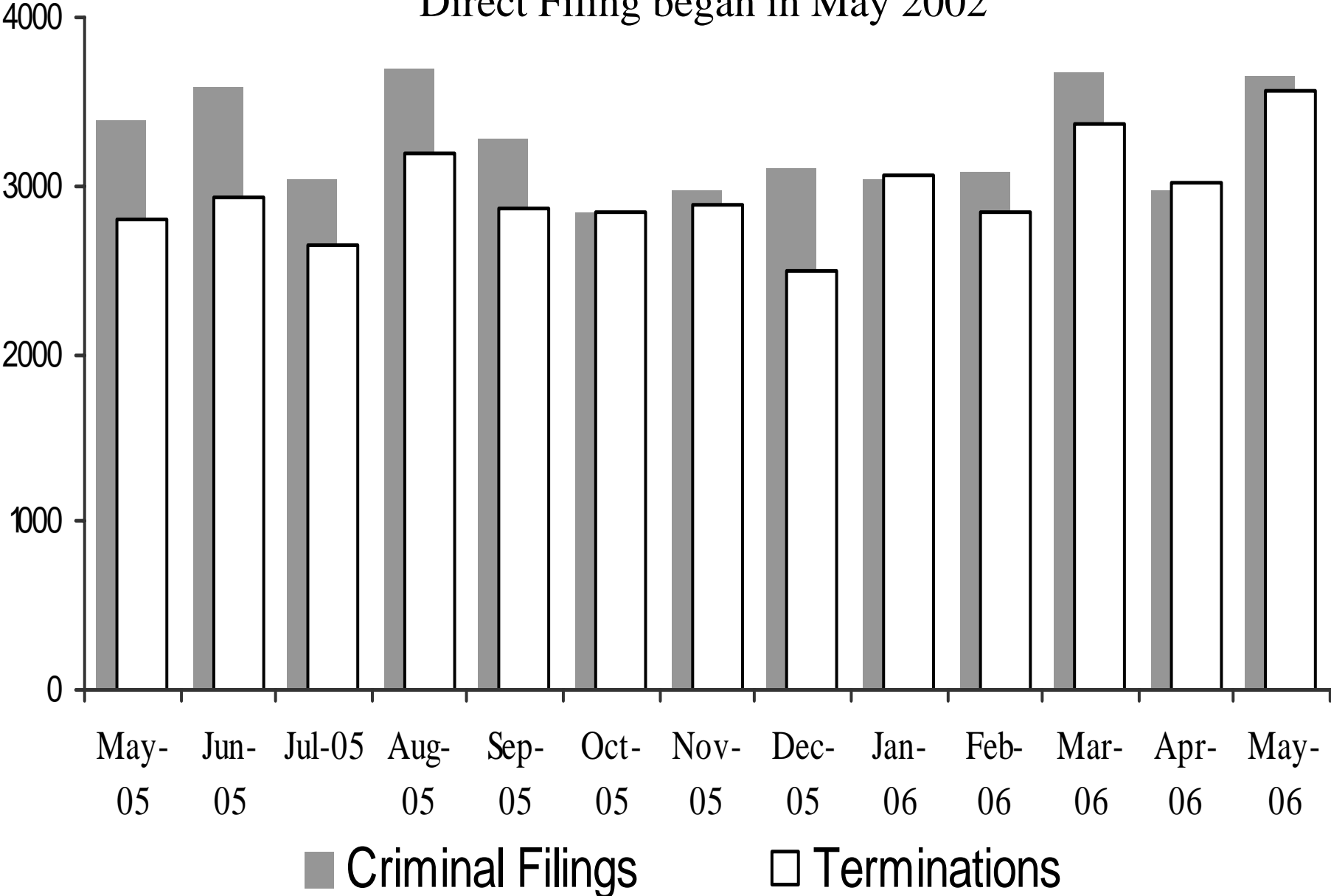
Sheriff's Office Transports for Inmate Court Appearances



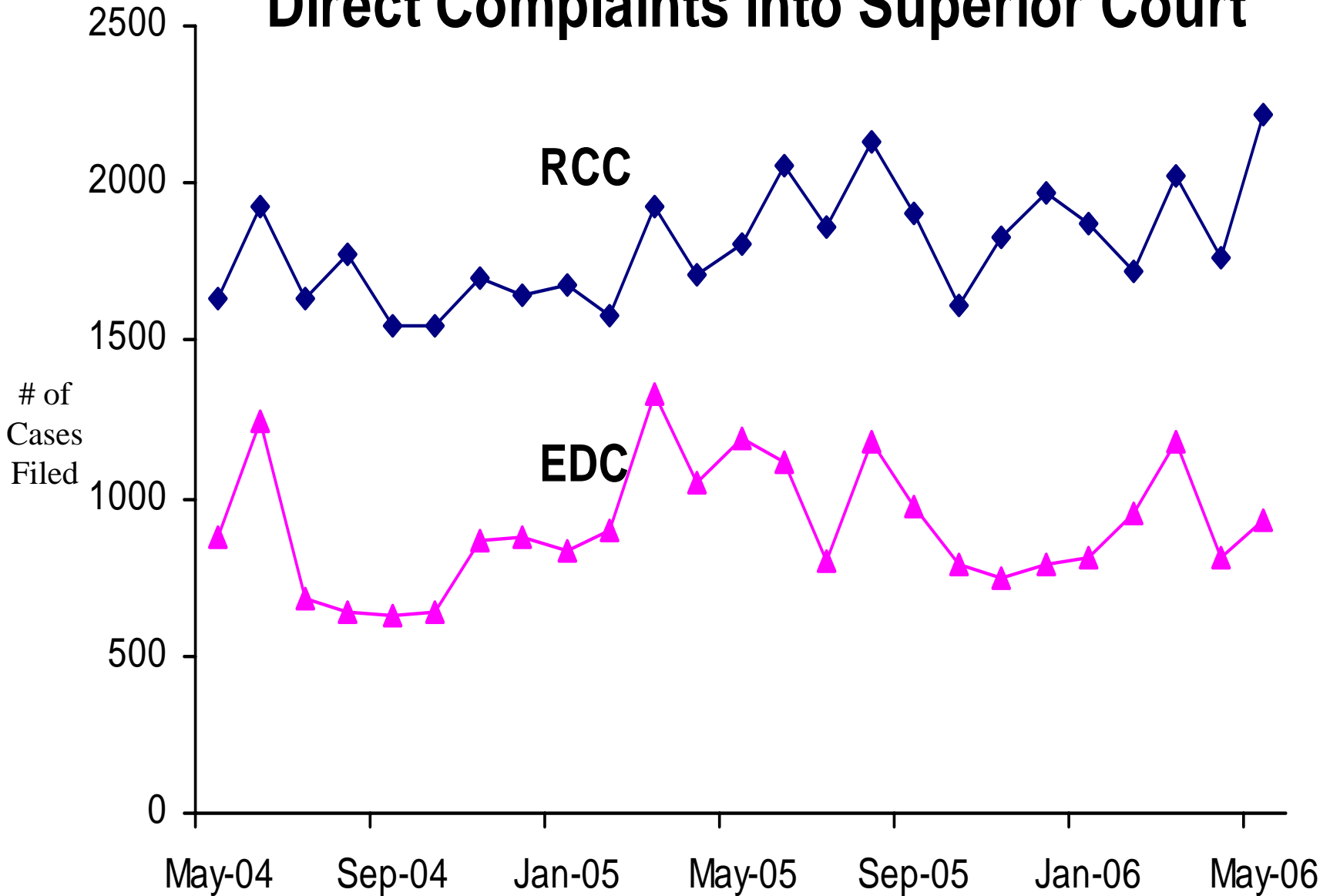
“Special” cases added in March 2006 include Downtown Remands, SEJD Remands, and SEJD Unscheduled.

Superior Court Filings and Terminations

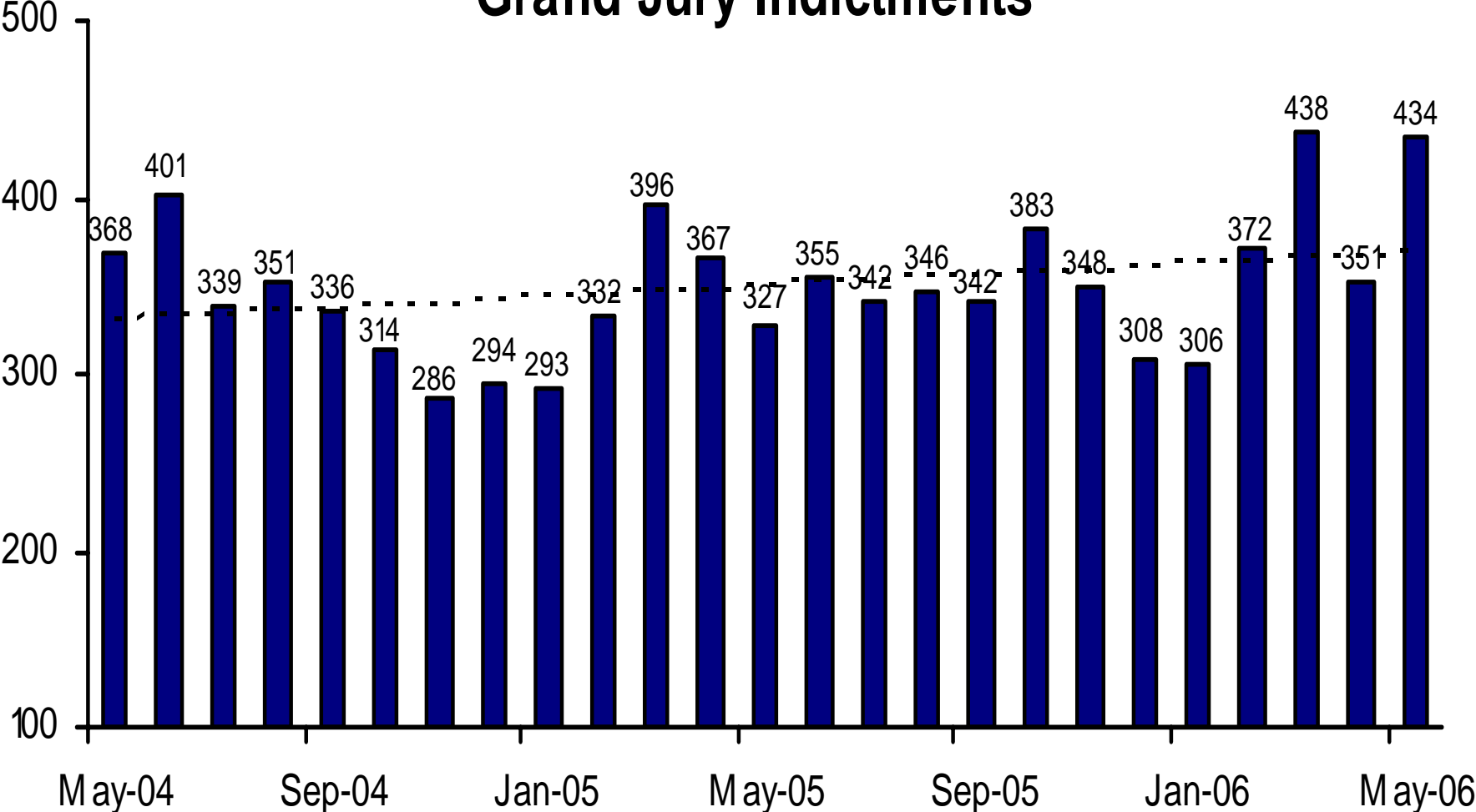
Direct Filing began in May 2002



Direct Complaints into Superior Court

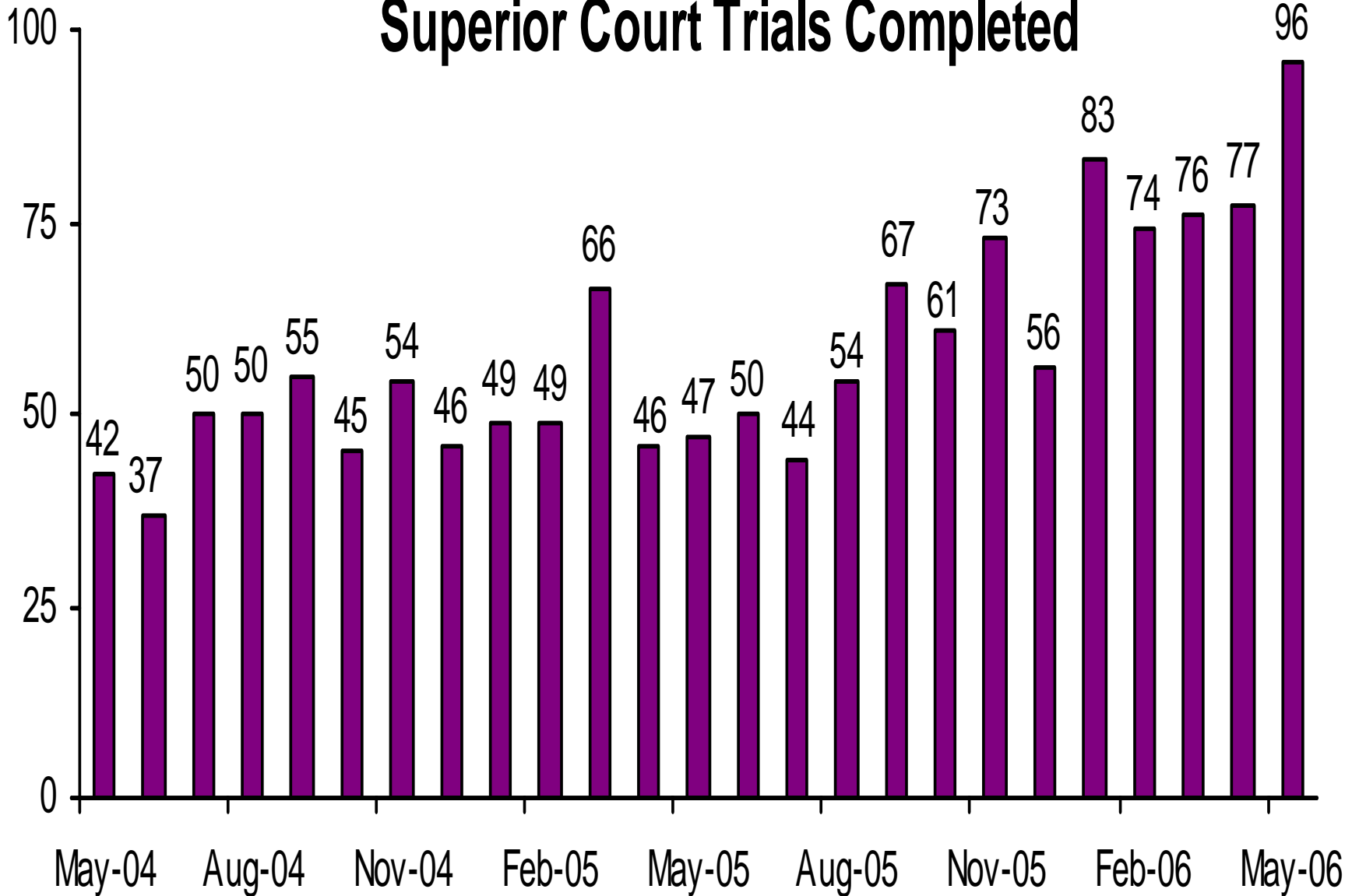


Grand Jury Indictments

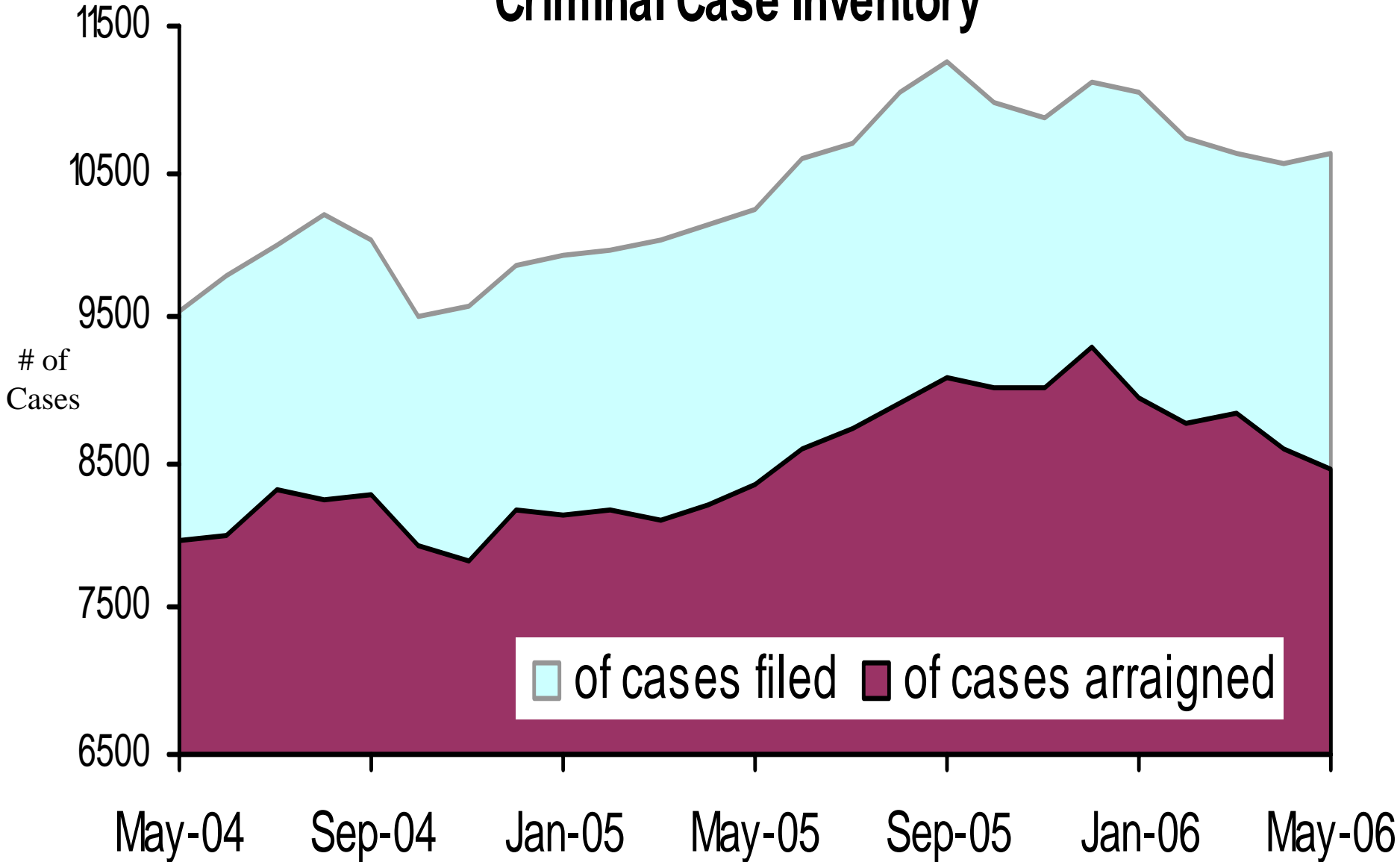


These numbers do not include notices of supervening indictments, non-EDC direct complaints, and juvenile direct complaints.

Superior Court Trials Completed



Active Pending Criminal Case Inventory



Pretrial Supervision

Defendant Monitoring Unit

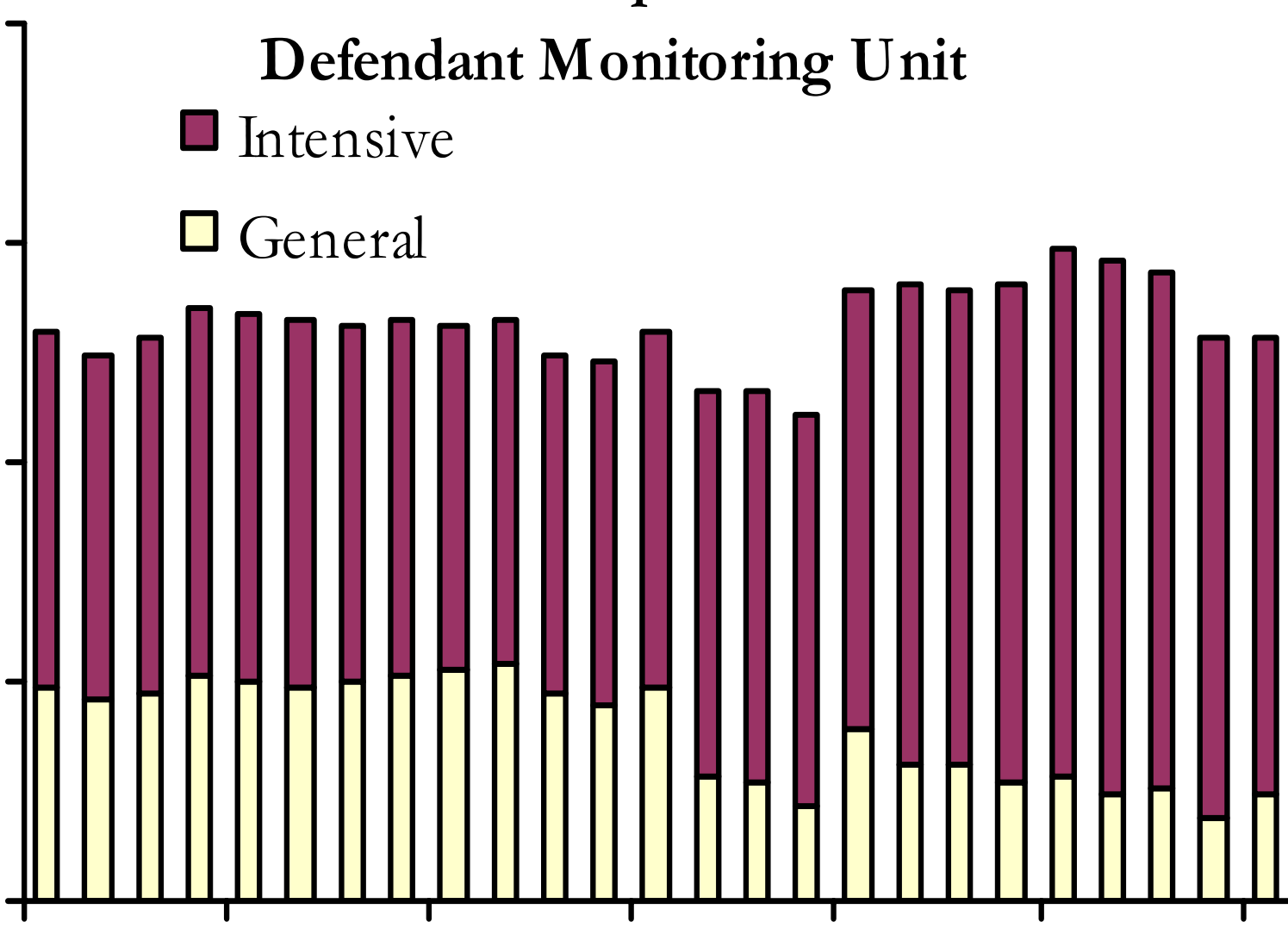
Intensive

General

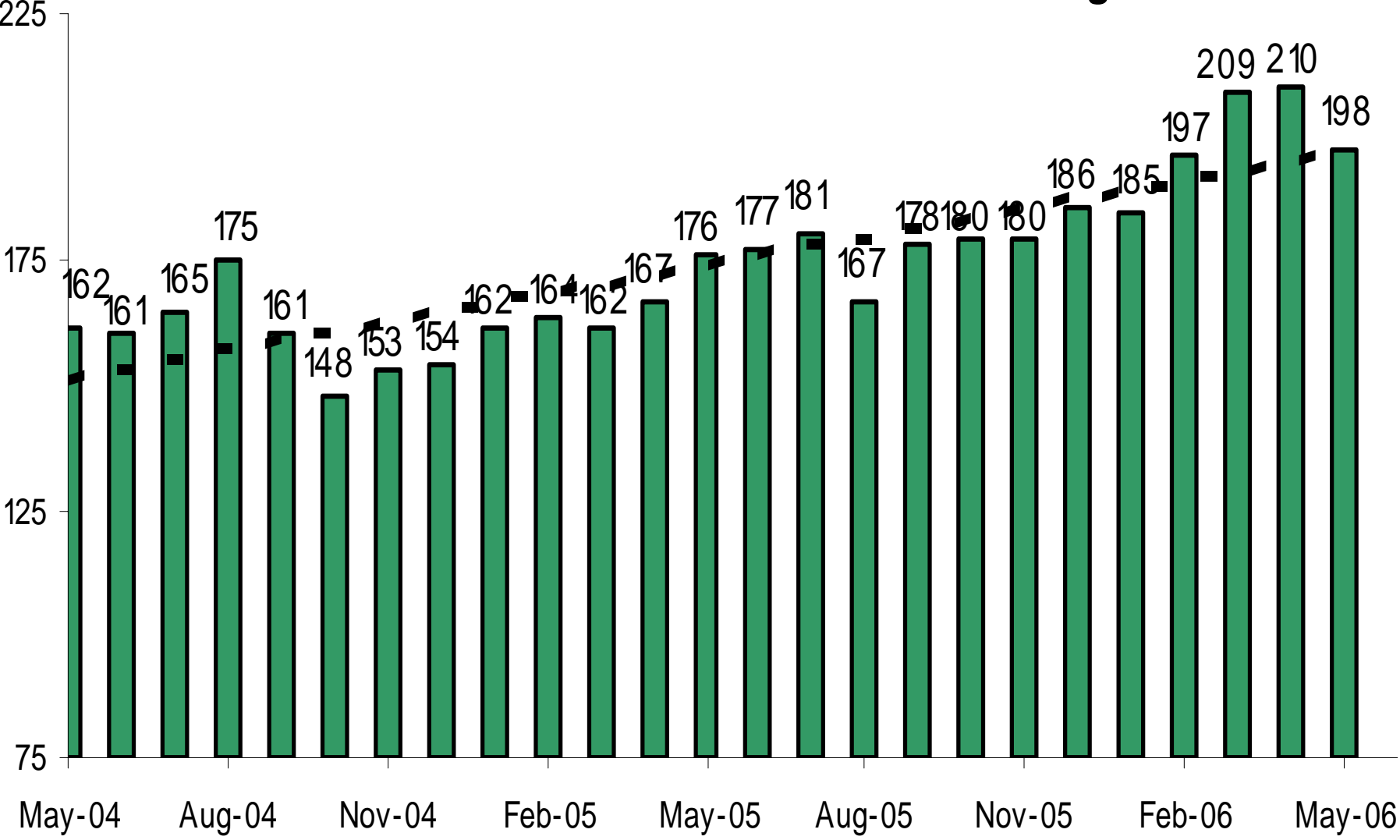
of Defendants Monitored

2500
2000
1500
1000
500

May-04 Sep-04 Jan-05 May-05 Sep-05 Jan-06 May-06



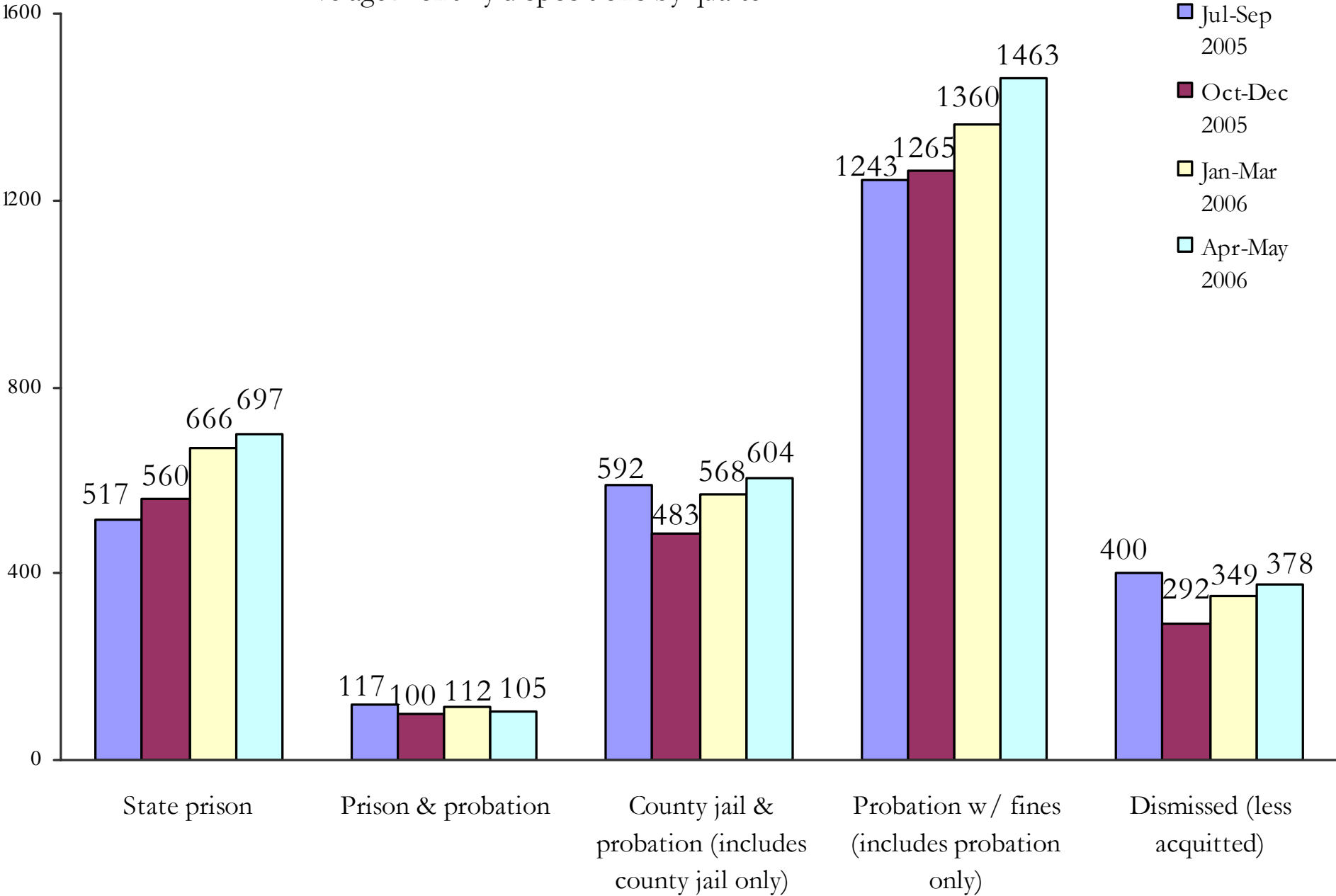
Pretrial Supervision Defendants on Electronic Monitoring



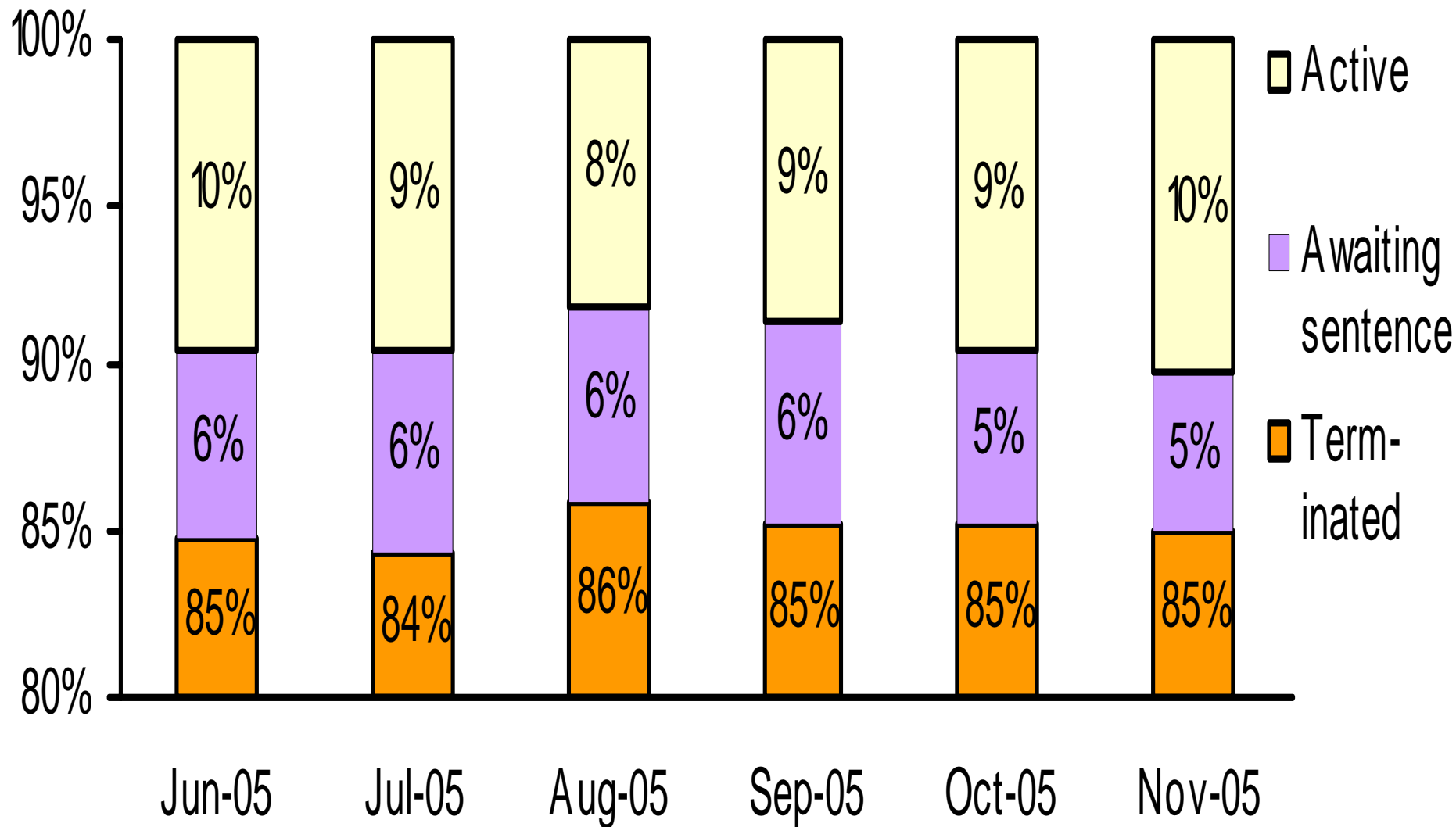
Disposition of Cases Terminated

Average monthly dispositions by quarter

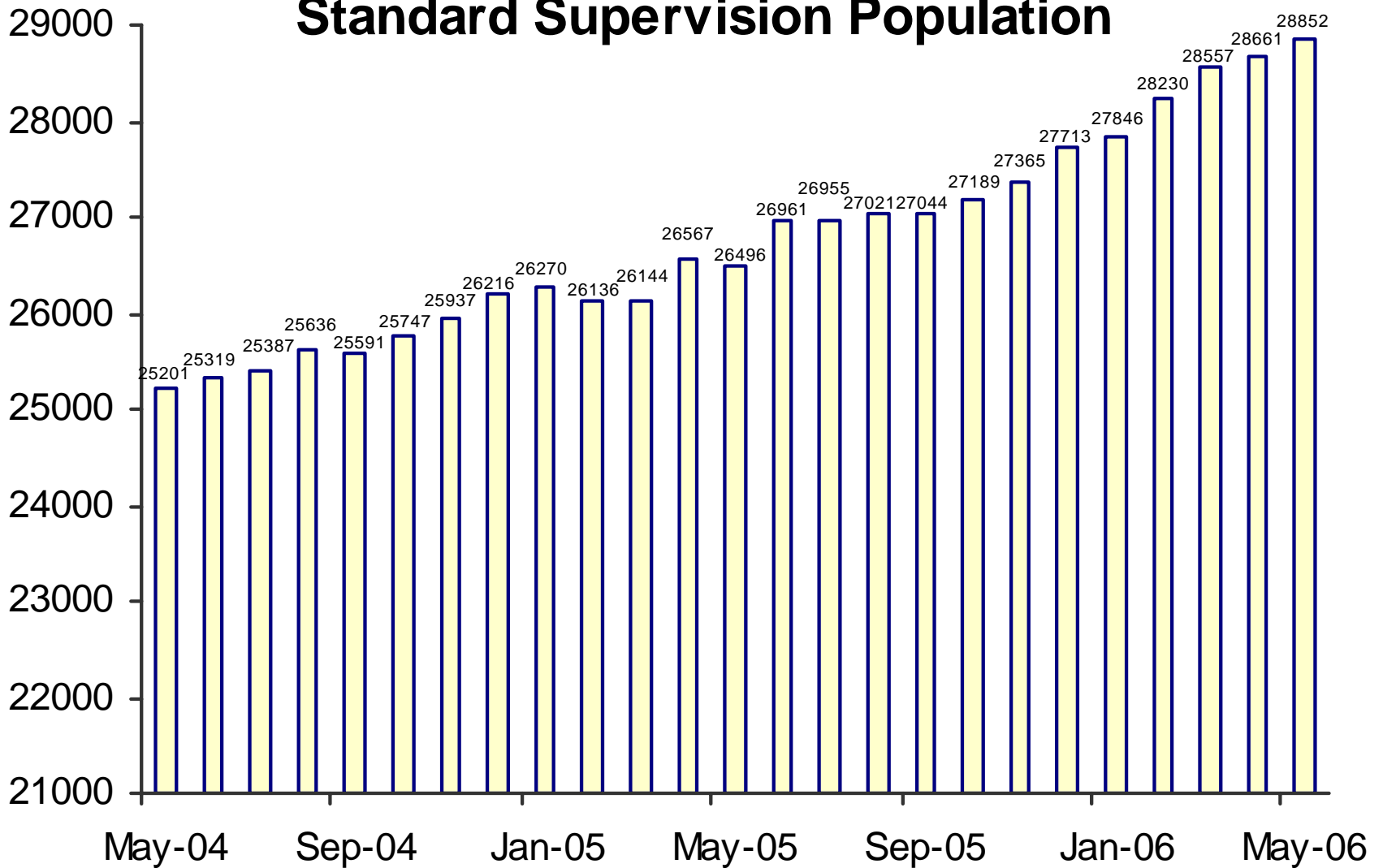
- Jul-Sep 2005
- Oct-Dec 2005
- Jan-Mar 2006
- Apr-May 2006



Status of Cases After 180 Days

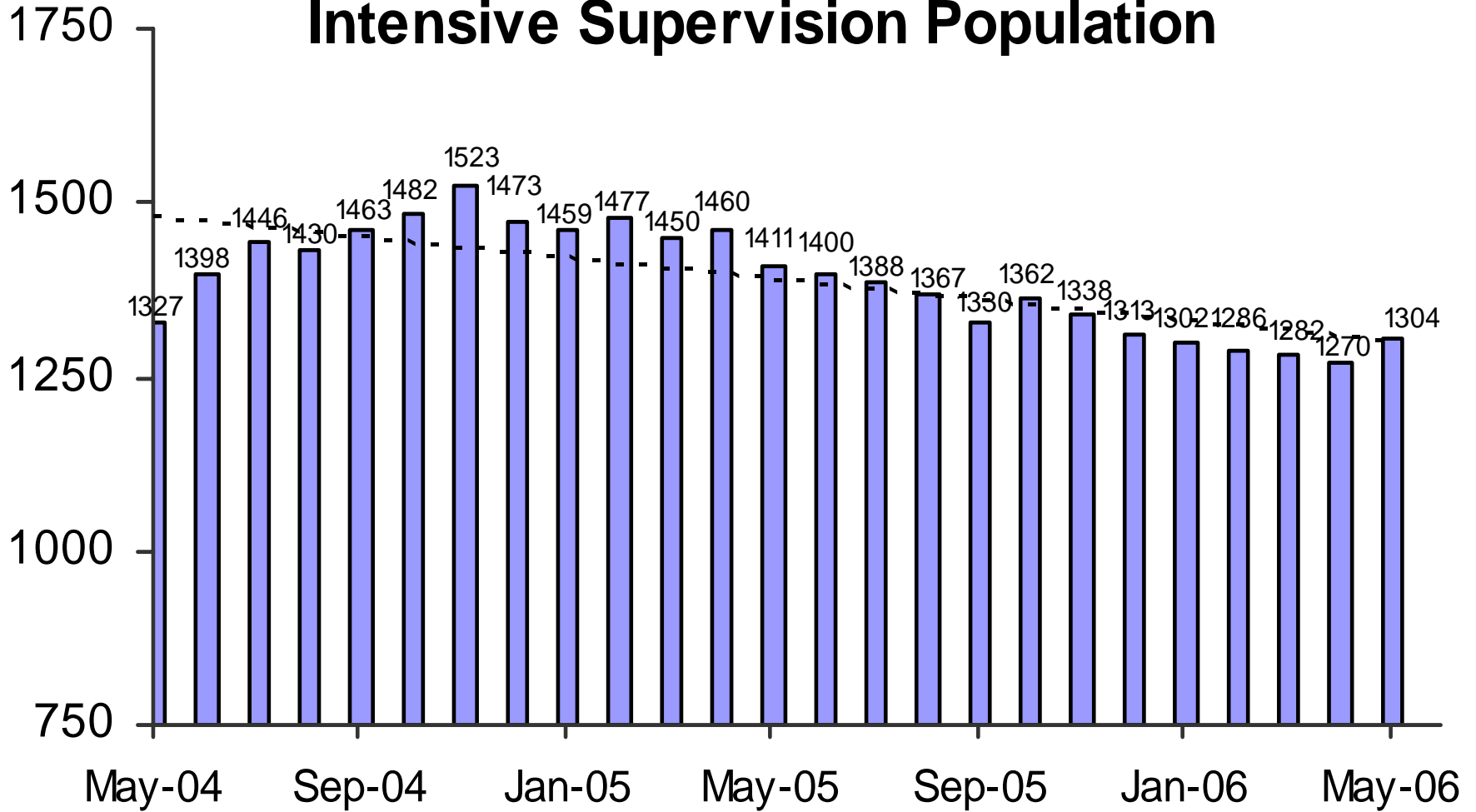


Adult Probation Standard Supervision Population

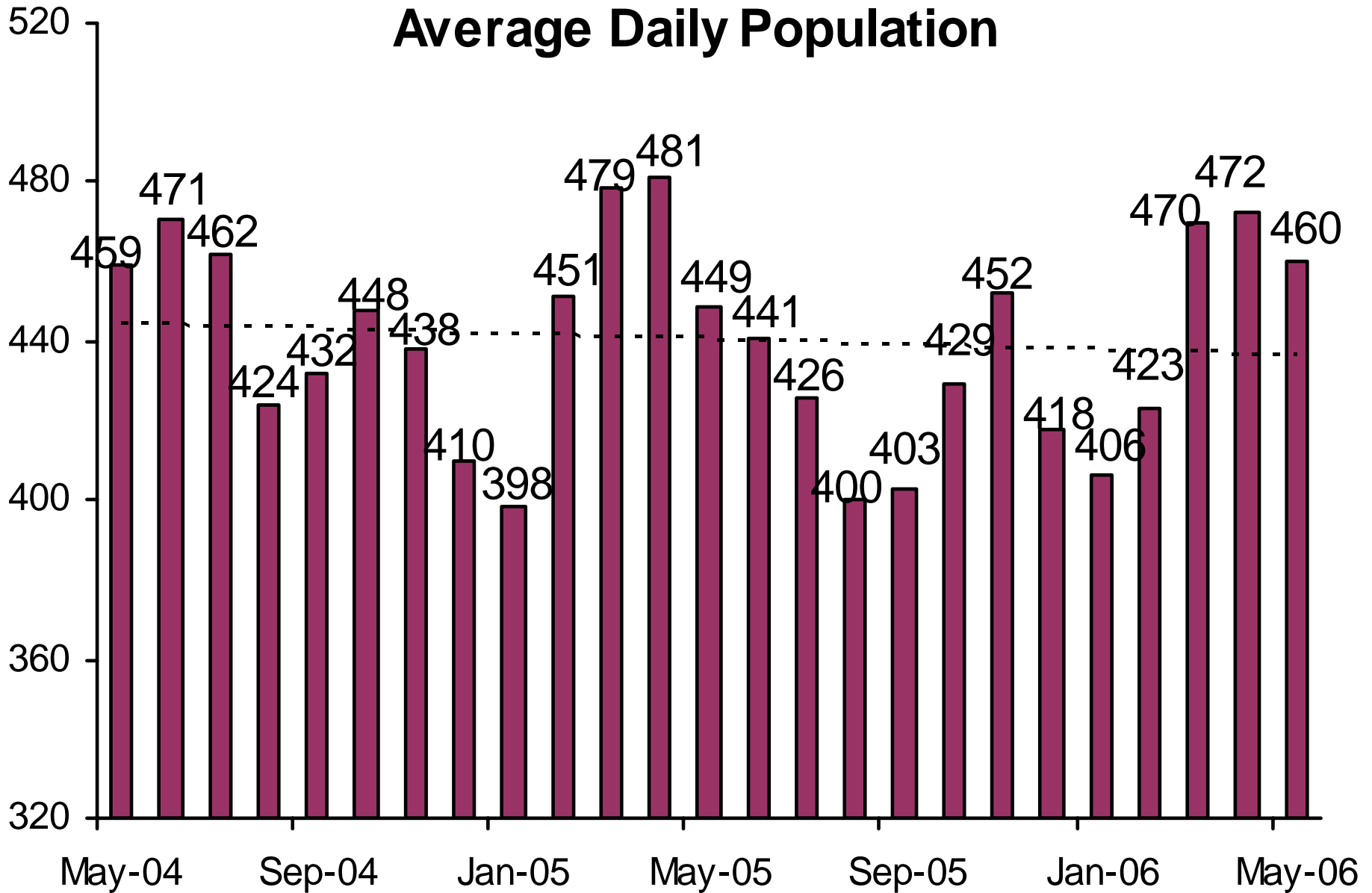


This population includes Interstate Compact and Report and Review caseloads, as reported to the Board of Supervisors and JLBC.

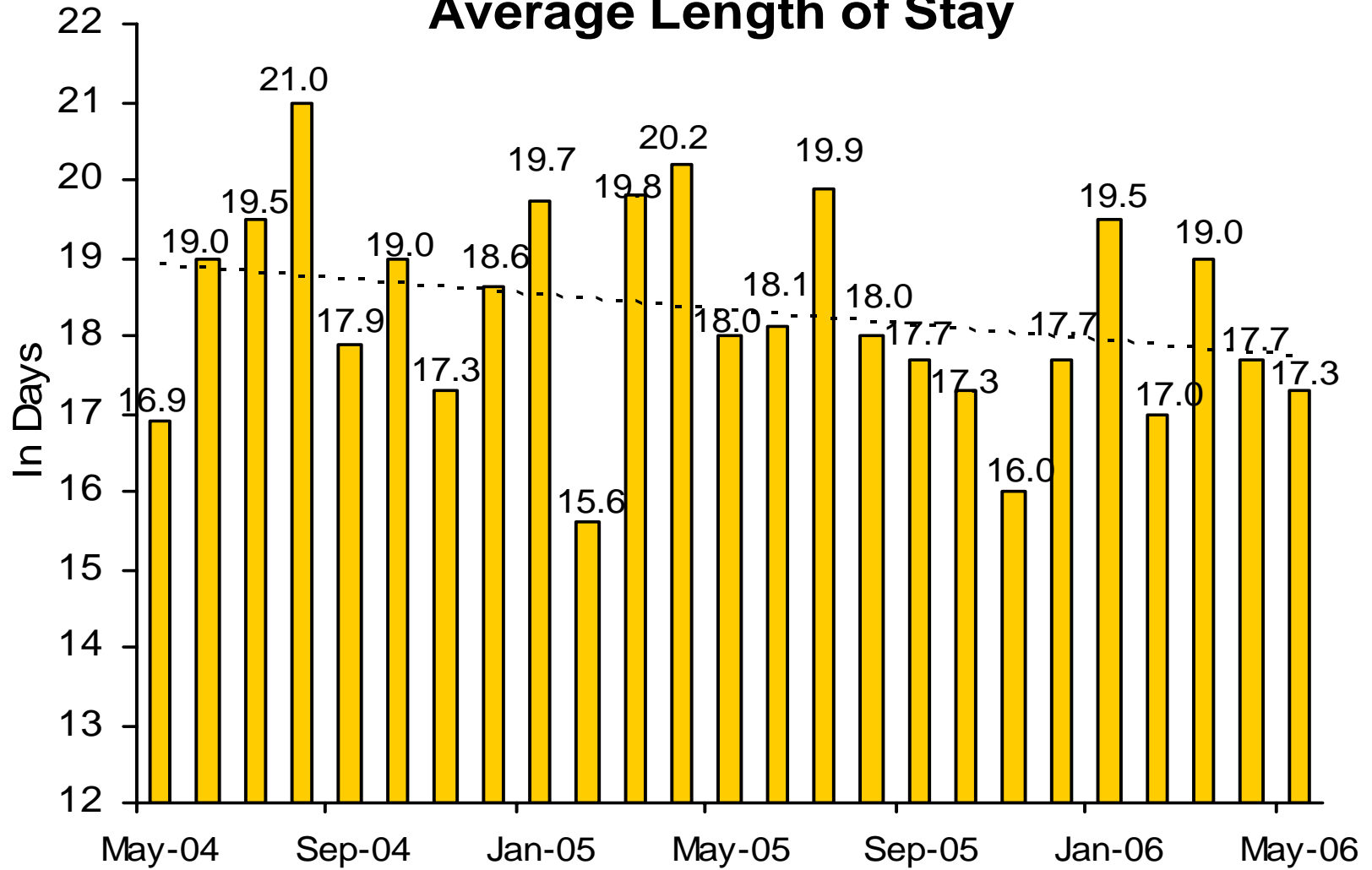
Adult Probation Intensive Supervision Population



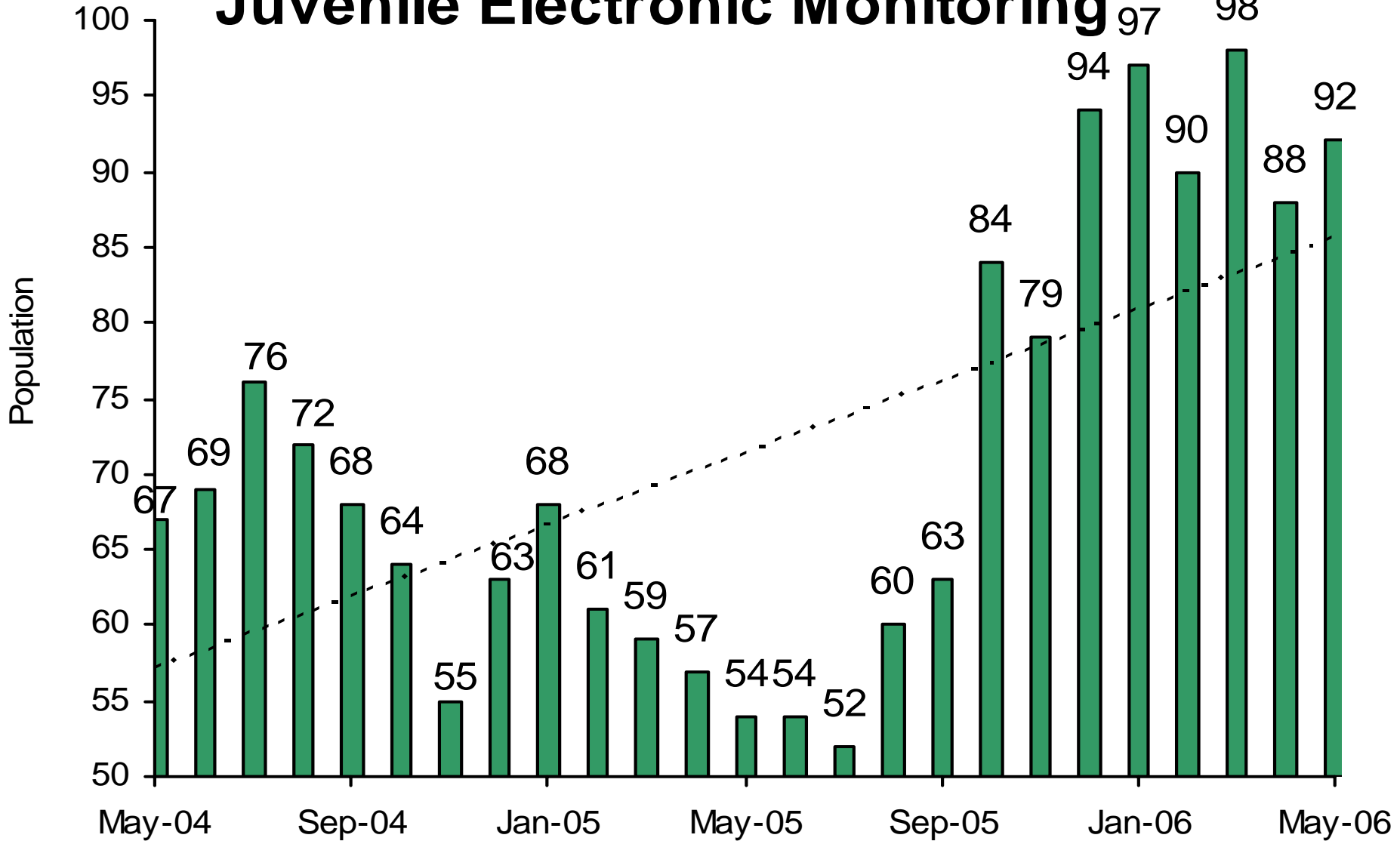
Juvenile Detention Average Daily Population



Juvenile Detention Average Length of Stay

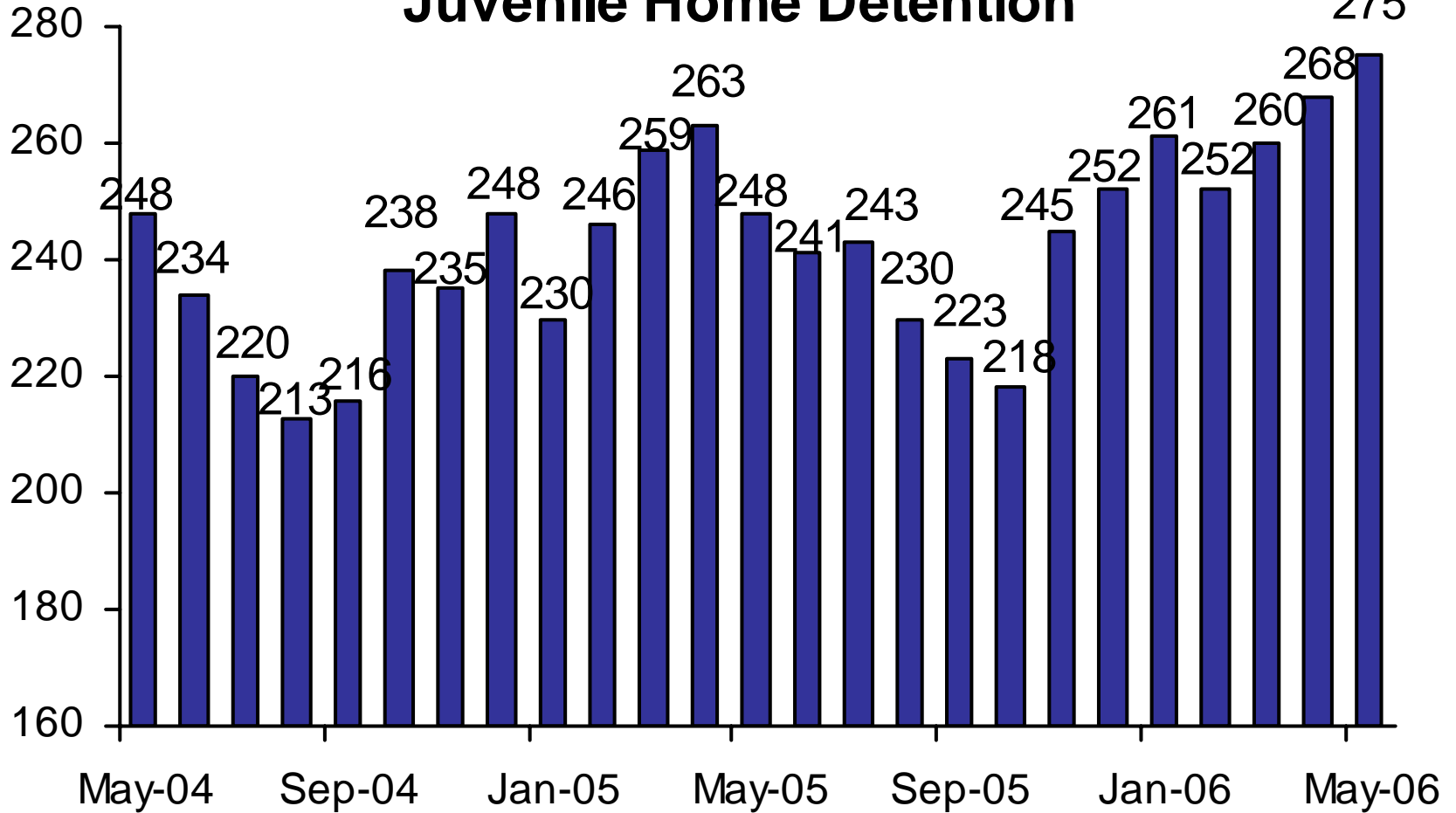


Juvenile Electronic Monitoring



The increase beginning in October 2005 is due to more accurate data collection.

Juvenile Home Detention



Juvenile Probation

■ # on standard probation ■ # on intensive probation

