



Maricopa County
Criminal Justice System

Monthly Performance Report for November 2005

Monthly Averages						
	FY 2002	FY 2003	FY 2004	FY 2005	FY 2006	Nov. 2005
Sheriff's Office						
Bookings	9,641	9,875	10,176	9,975	10,437	9,935
Average Daily Population	7,557	8,044	8,657	9,054	9,976	10,117
Avg Length of Stay (in days)	23.8	24.4	26.0	27.7	29.3	30.6
Superior Court						
Filings	2,515	2,904	3,062	2,996	3,170	2,975
Terminations	2,367	2,330	2,612	2,758	2,882	2,890
Clearance Rate	94%	80%	85%	93.0%	91.3%	97.1%
Active Pending Inventory	7,419	8,123	9,106	10,002	10,969	10,862
Trials Completed	61	59	42	51	60	73
Trial Rate	2.4%	2%	1.4%	1.7%	1.9%	2.5%
Adult Probation						
Pretrial General Supervision	609	700	990	978	800	817
Pretrial Intensive Supervision	356	331	657	816	992	1,071
Pretrial Electronic Monitoring	78	97	153	164	177	180
Standard Probation Supervision	24,448	25,400	23,957	26,091	27,115	27,365
Intensive Probation Supervision	1,564	1,267	1,079	1,456	1,375	1,338
Juvenile Detention and Probation						
Avg Daily Detention Pop	407	401	431	443	422	452
Avg Length of Stay (in days)	14.7	15.1	16.6	18.7	17.8	16.0
Standard Prob.	4,726	4,387	4,232	4,108	4,059	4,013
Intensive Prob.	666	659	518	547	547	539

Criminal Justice System News

Adult Incarceration: Bookings and the average daily population fell, as is typical this time of year. Bookings were at 10,468 in October, down to 9,935 in November, while ADP went from 10,201 to 10,117. The average length of stay continued its slow creep up, from 30.2 days in October to 30.6 days in November.

The Average Daily Population for all populations and the ALOS for pretrial populations saw very slight changes. The ALOS for agency holds decreased from 79.4 days to 72 days, while ALOS for the sentenced population increased from 31 days to 33 days.

Filings & Case Processing: Both criminal filings and terminations increased from October to November, resulting in a termination rate of 97.1%. The active pending case inventory decreased from 10,964 to 10,862. Filings into the RCC rose in November, from 1,610 to 1,833. Filings into the EDC continued to fall, from 788 to 745. The trial rate continued to rise slightly, from 2.1% to 2.5%.

Adult Probation:

Levels of pretrial general supervision increased from 807 in October to 817 in November. Levels of pretrial intensive supervision decreased from 1,093 to 1,071. Levels of pretrial electronic monitoring numbers remained at 180. With the exception of minor fluctuations, the overall pretrial supervision population remains relatively stable.

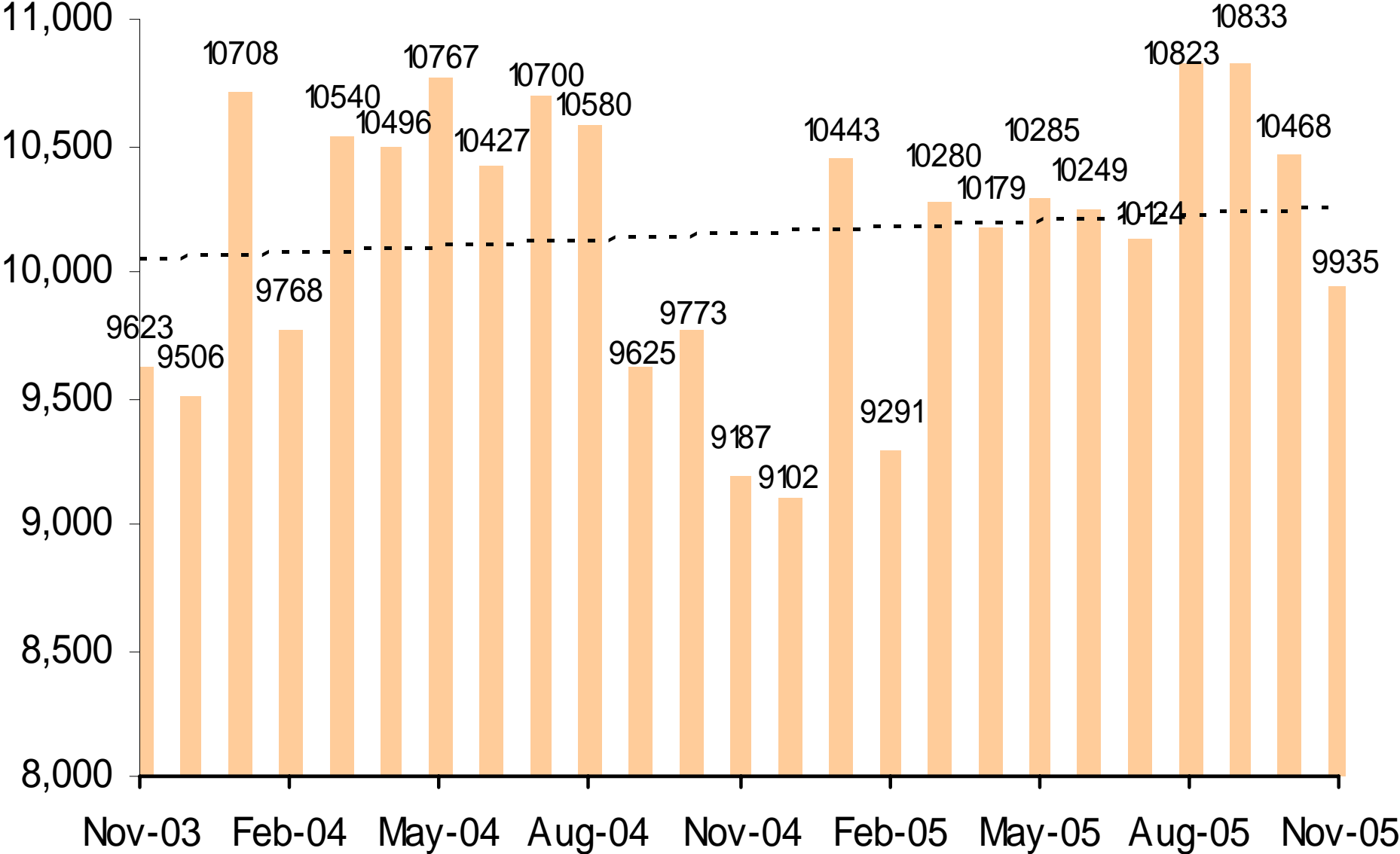
Levels of standard probation supervision increased from October (27,189) to November (27,365). Levels of intensive probation supervision decreased from 1,362 to 1,338.

Juvenile Detention and Probation: The average daily population increased from 429 in October to 452 in November, the highest since April 2005. The length of stay decreased from 17.3 to 16.0 days, the lowest since February 2005. Electronic monitoring decreased from 84 to 79. Home detention increased from 218 to 245, the highest since May 2005.

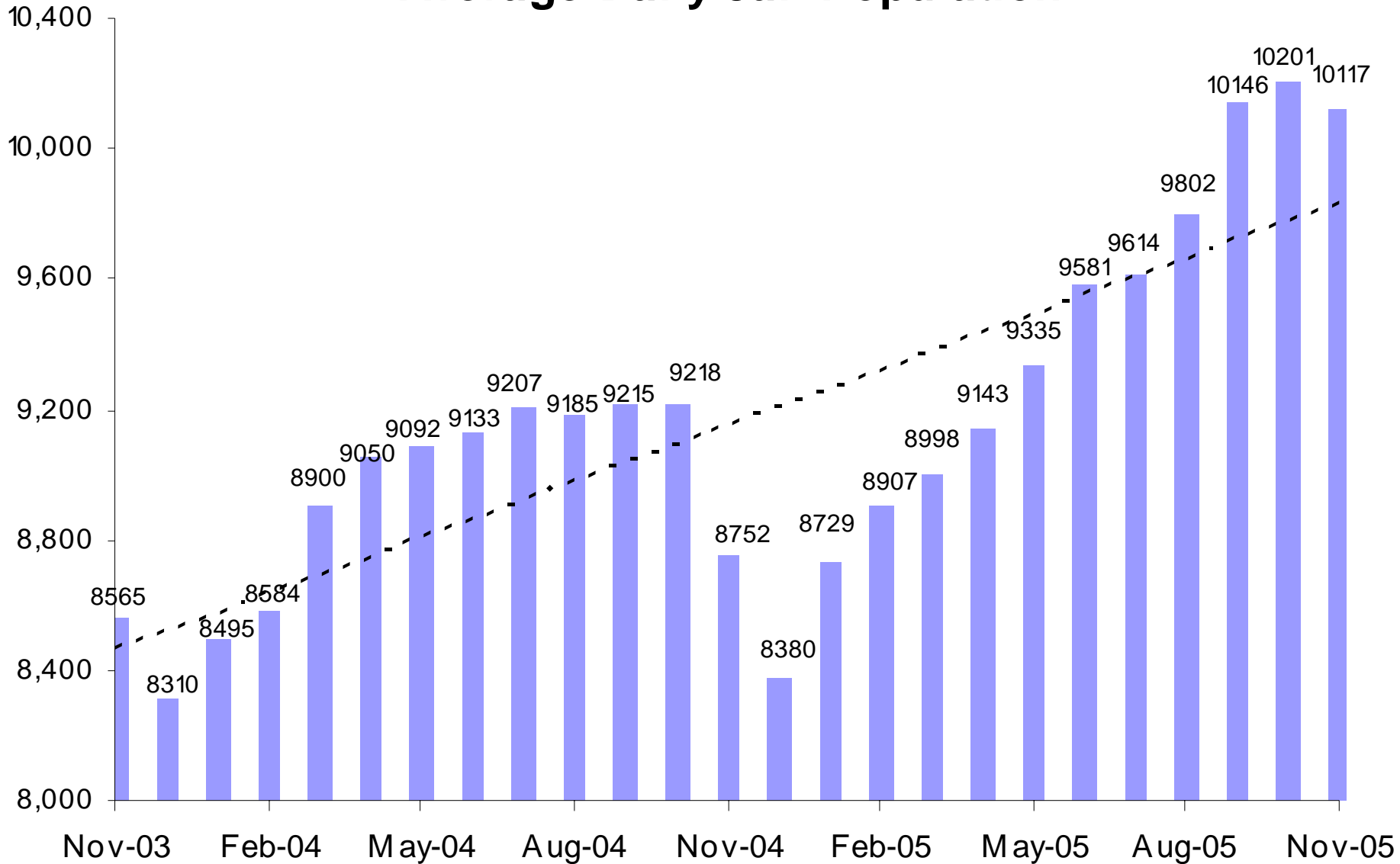
Levels of juvenile standard and intensive probation decreased slightly. Standard went from 4,049 to 4,013, while intensive went from 541 to 539.

A criminal justice system-wide goal is to enhance the utility and timeliness of management information on case processing, in an effort to help agencies effectively address current events. An interagency committee of McJustice meets regularly to accomplish this and develop this report. **Input from readers is welcomed.** Please contact Amy Rex at rexa@mail.maricopa.gov or 602-506-1310.

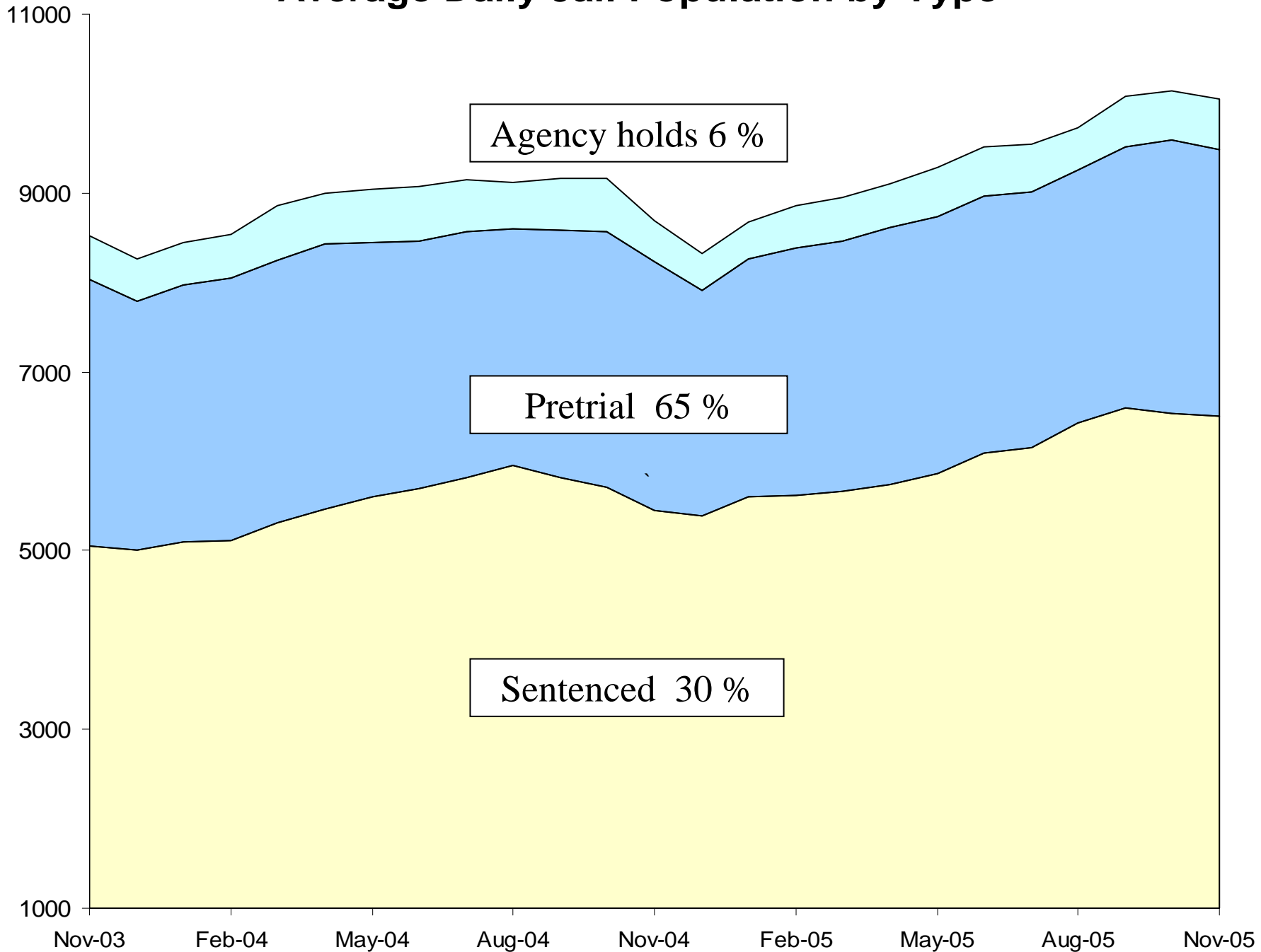
Jail Bookings



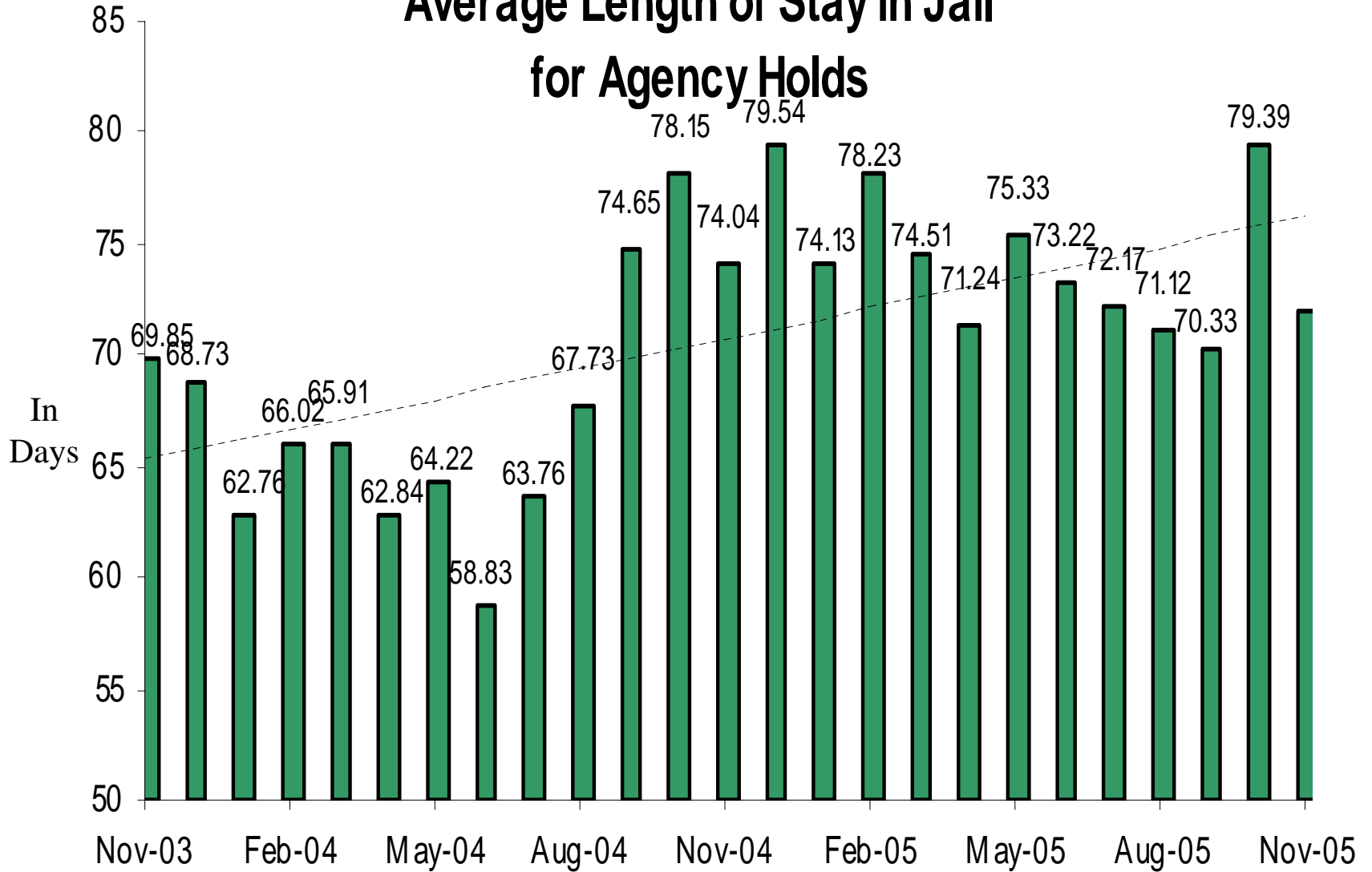
Average Daily Jail Population



Average Daily Jail Population by Type

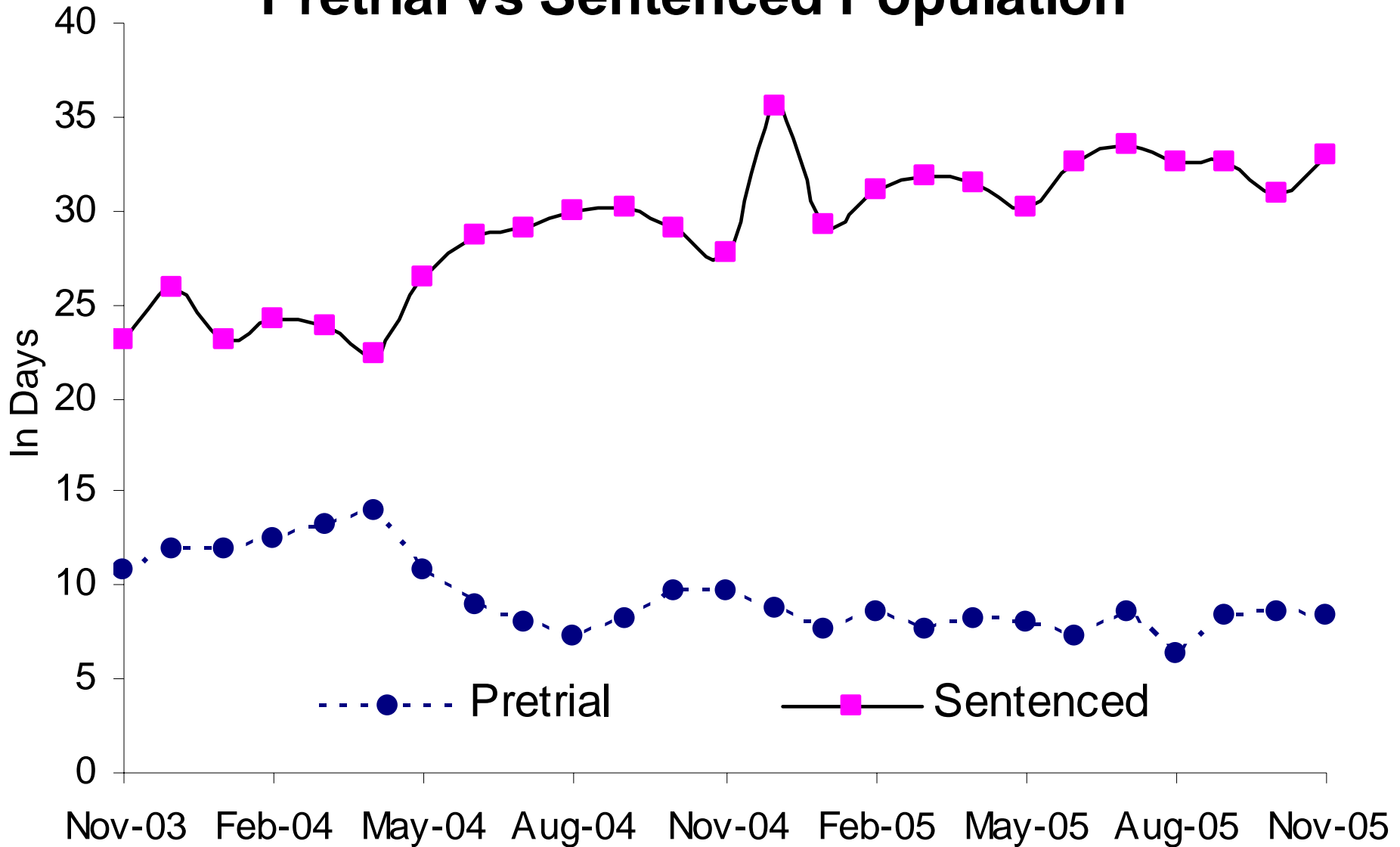


Average Length of Stay in Jail for Agency Holds

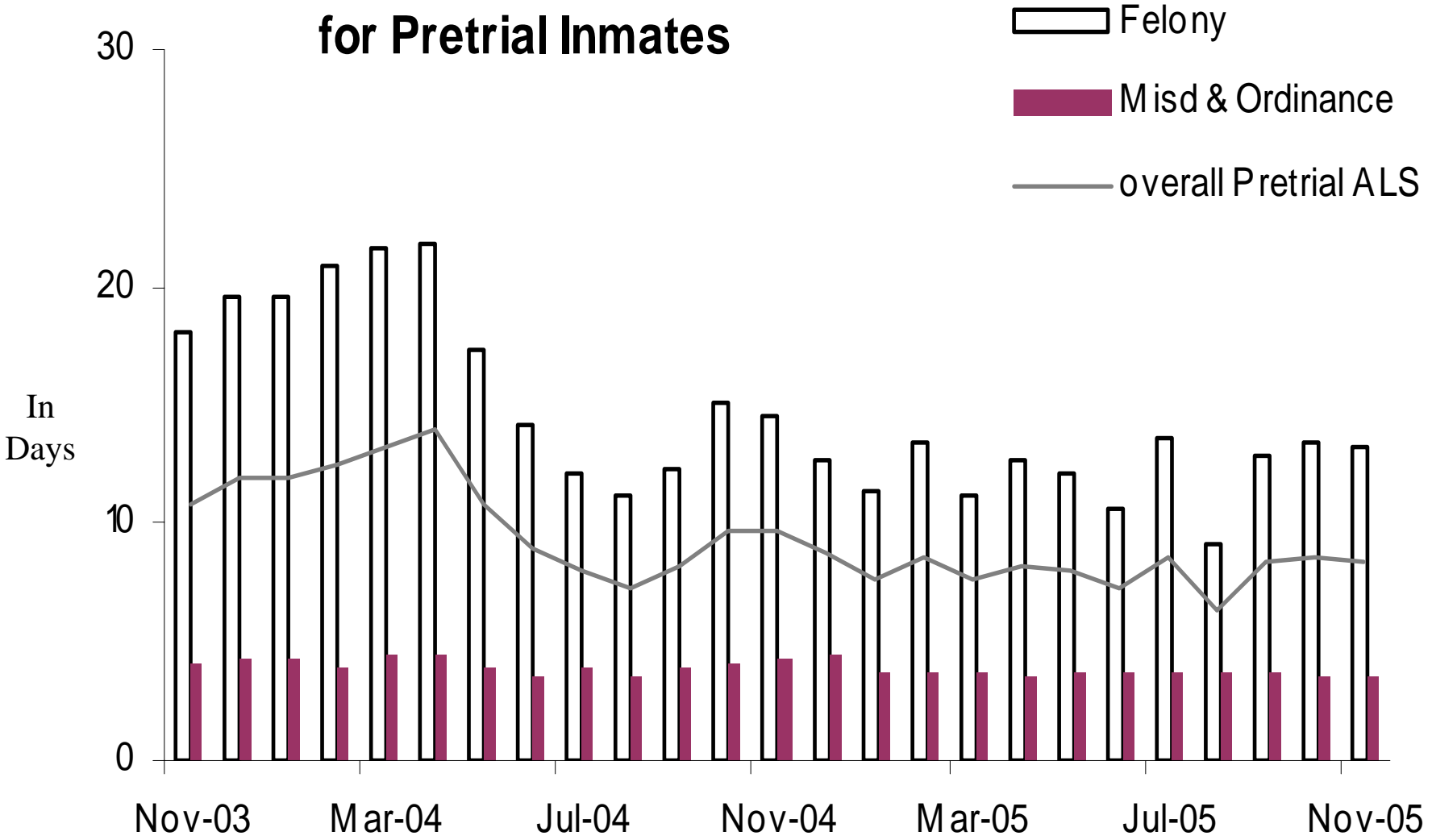


75% Dept of Corrections, 14% Federal agencies, 11% other

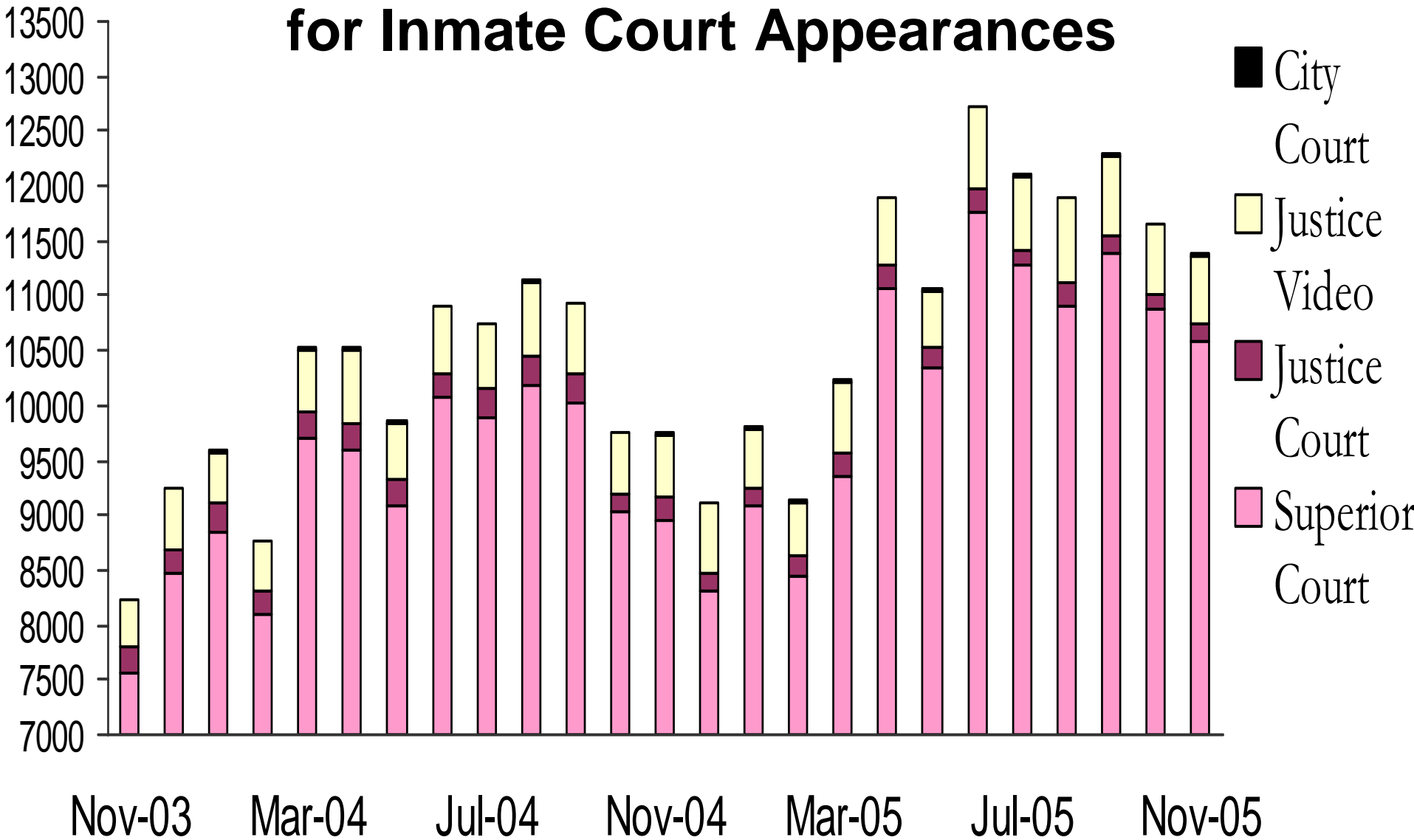
Average Length of Stay in Jail Pretrial vs Sentenced Population



Average Length of Stay in Jail for Pretrial Inmates



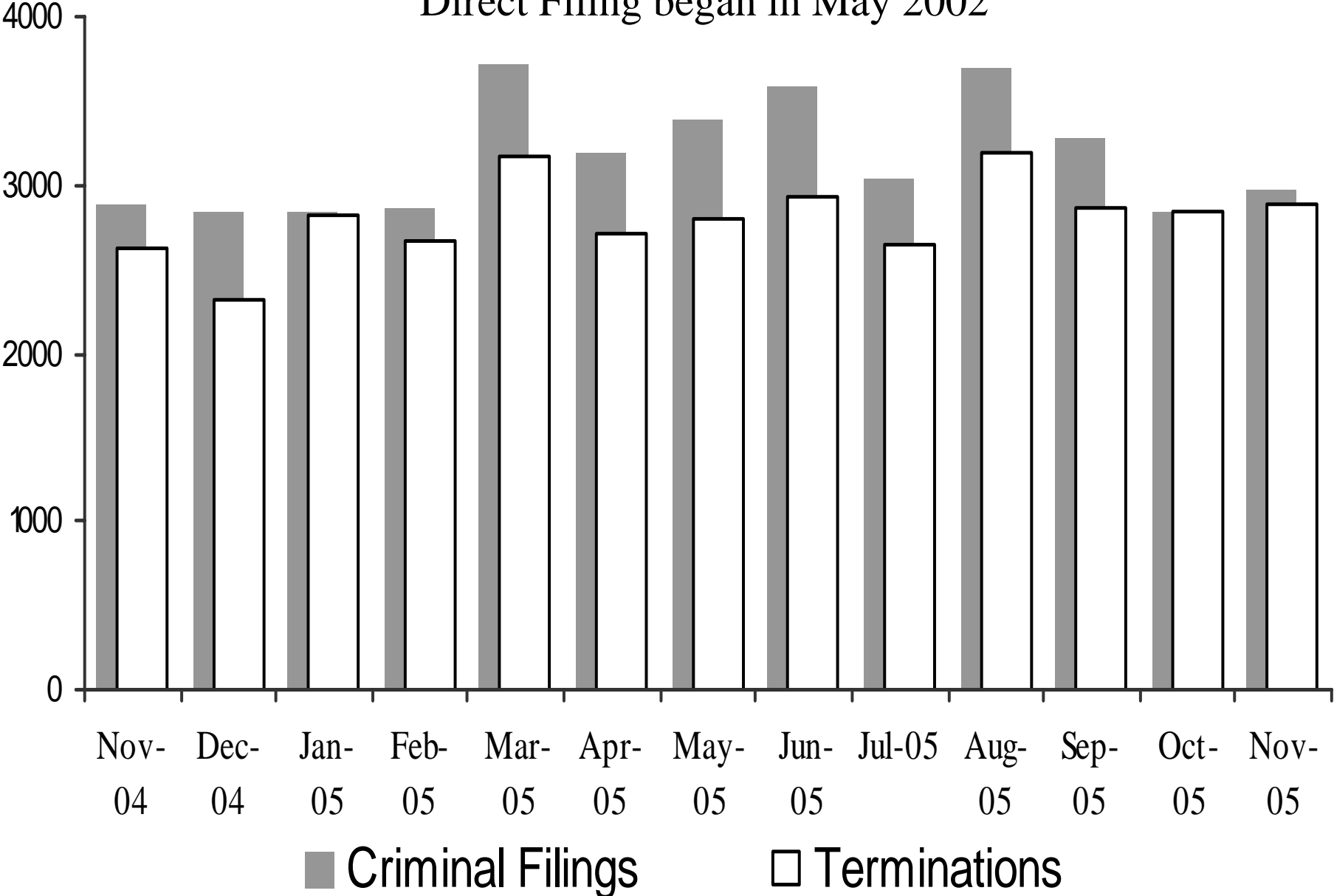
Sheriff's Office Transports for Inmate Court Appearances



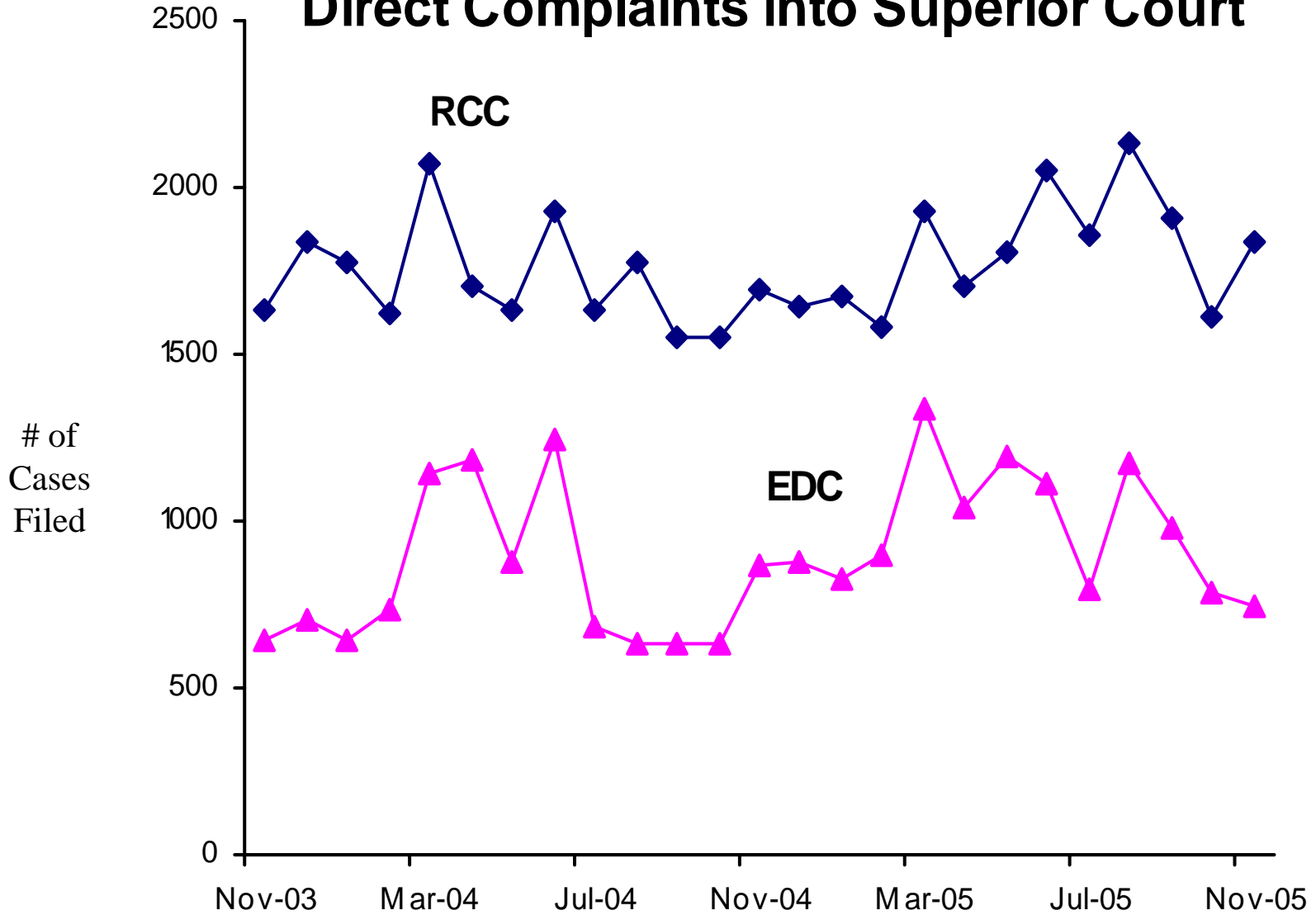
Since Direct Filing into Superior Court began May 2002, remaining transports to Justice Courts are for misdemeanor cases.

Superior Court Filings and Terminations

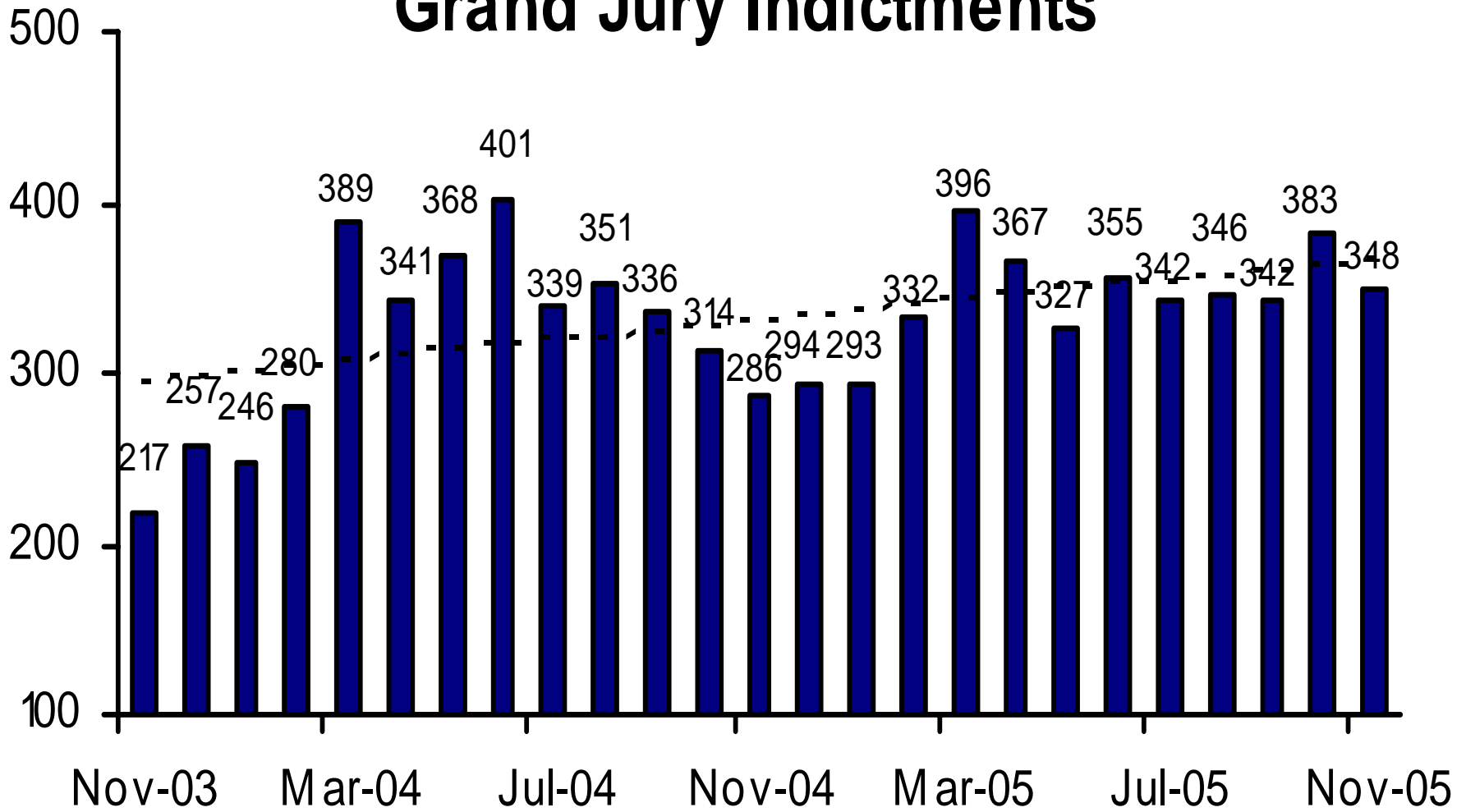
Direct Filing began in May 2002



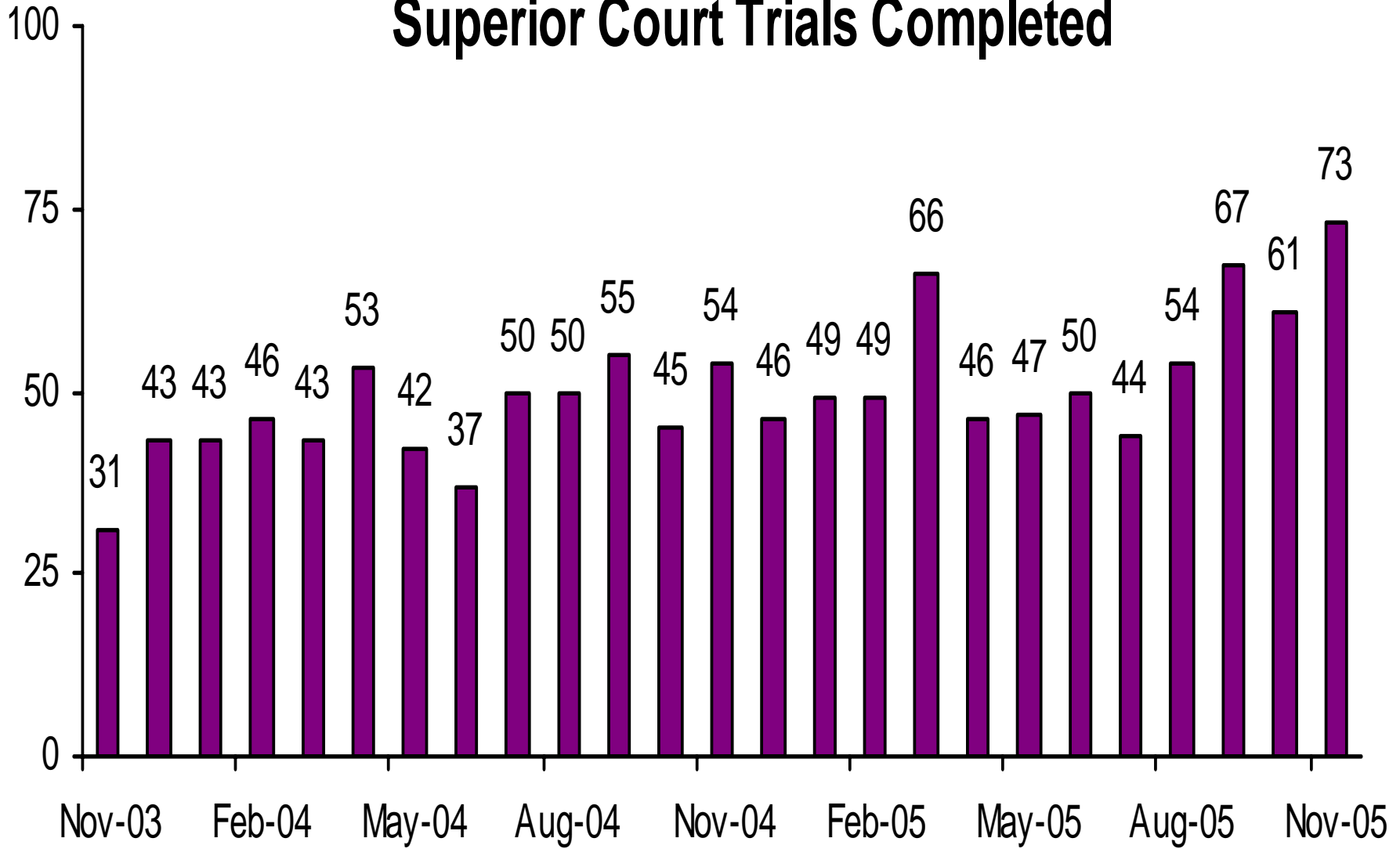
Direct Complaints into Superior Court



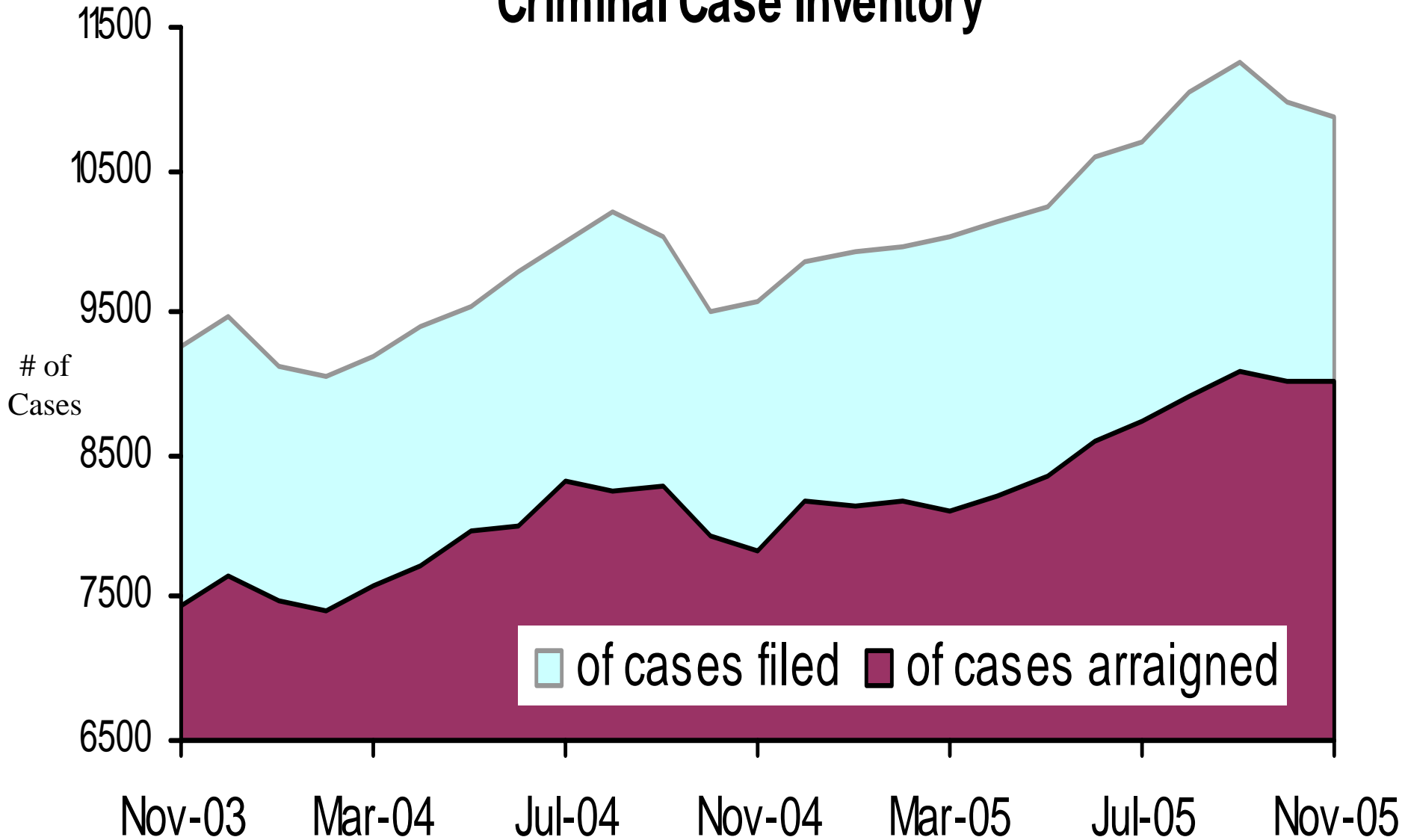
Grand Jury Indictments



Superior Court Trials Completed

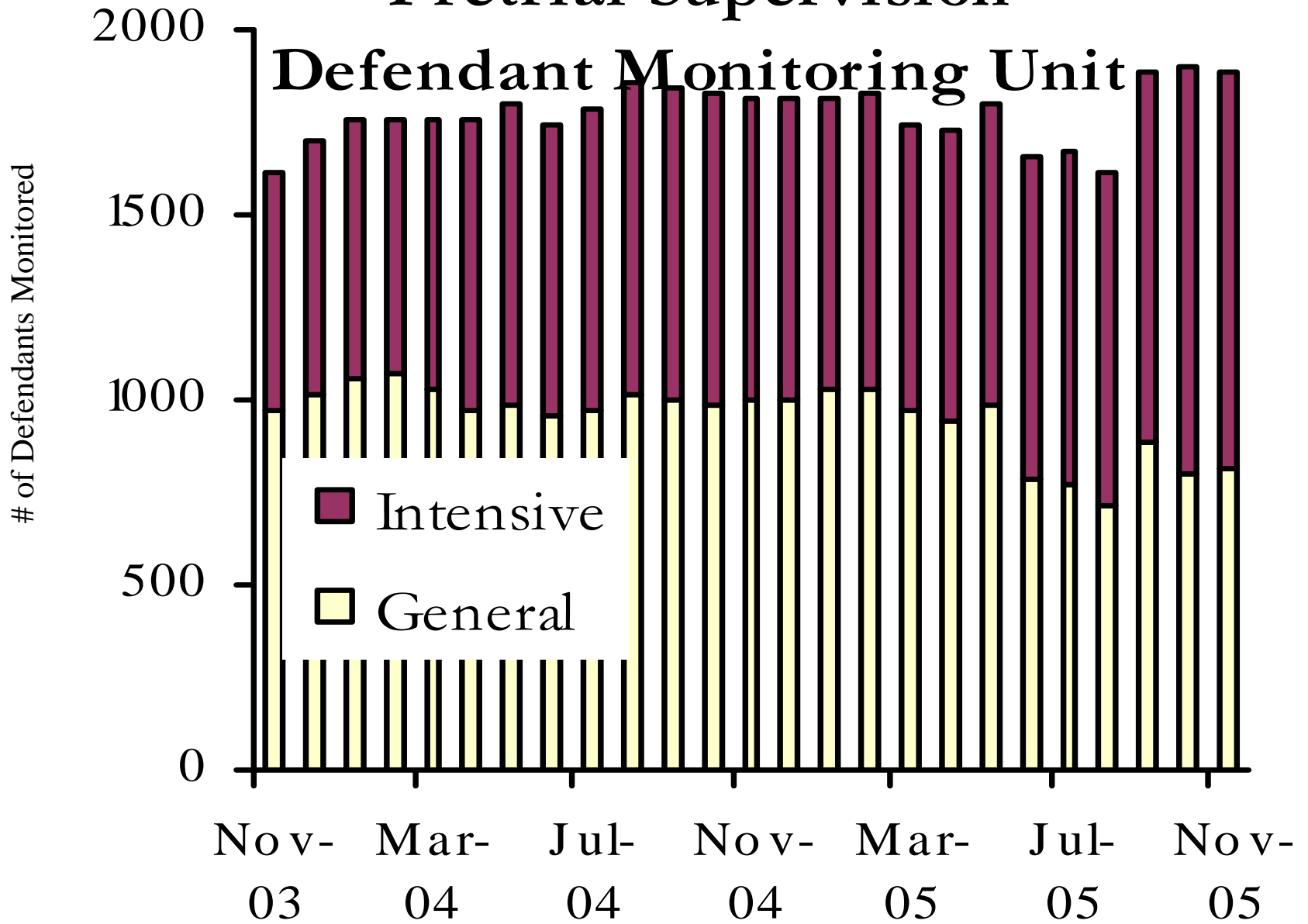


Active Pending Criminal Case Inventory

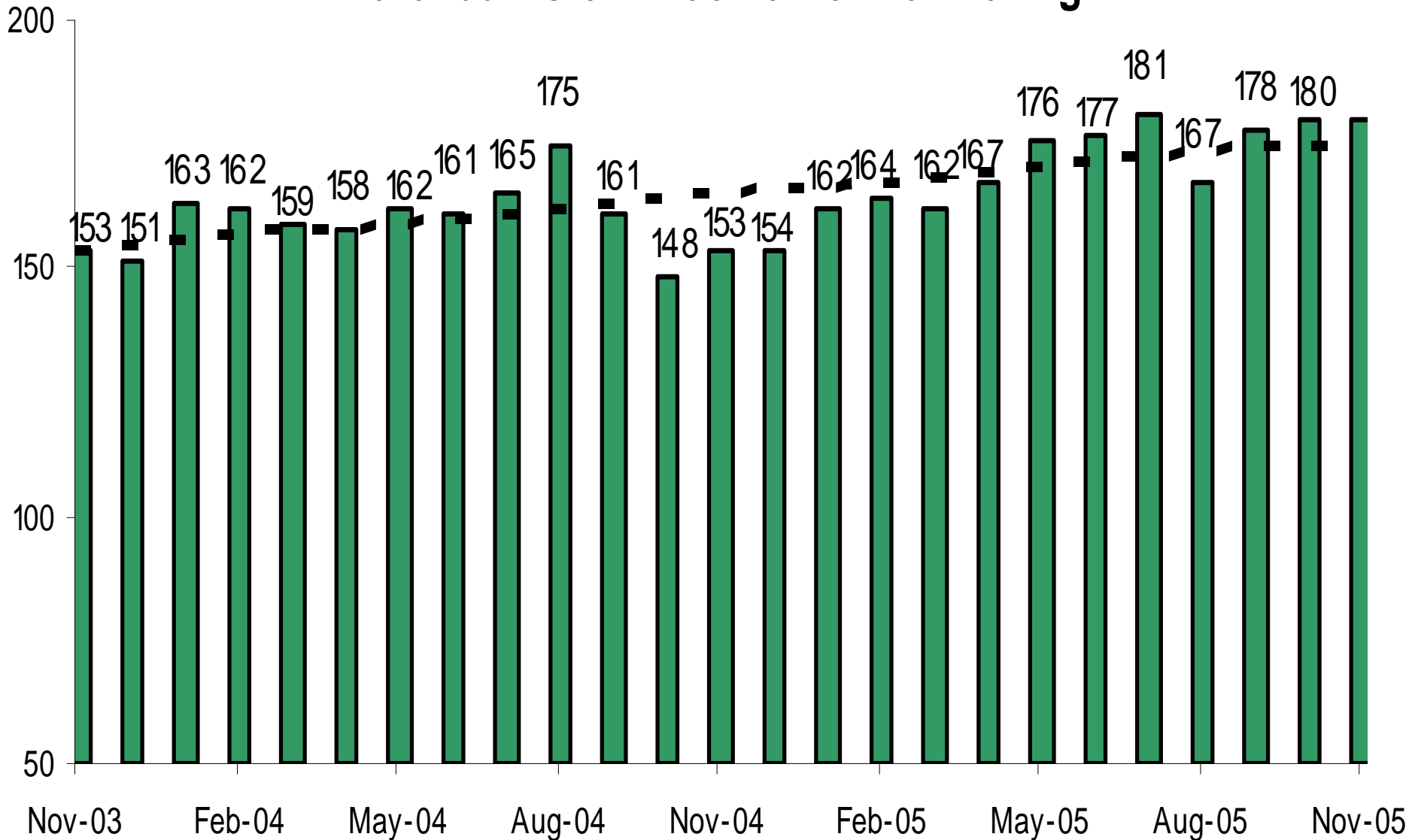


Pretrial Supervision

Defendant Monitoring Unit



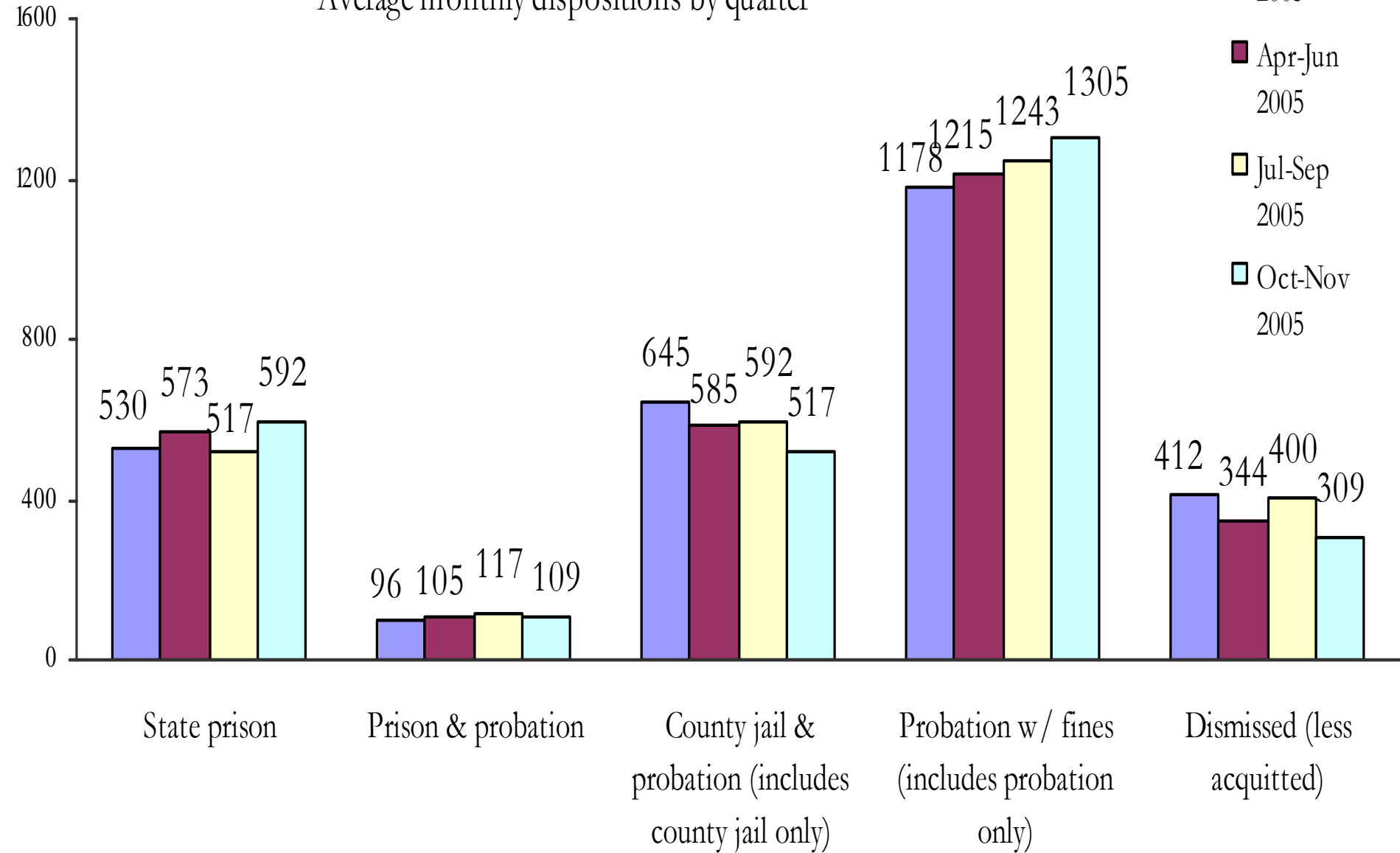
Pretrial Supervision Defendants on Electronic Monitoring



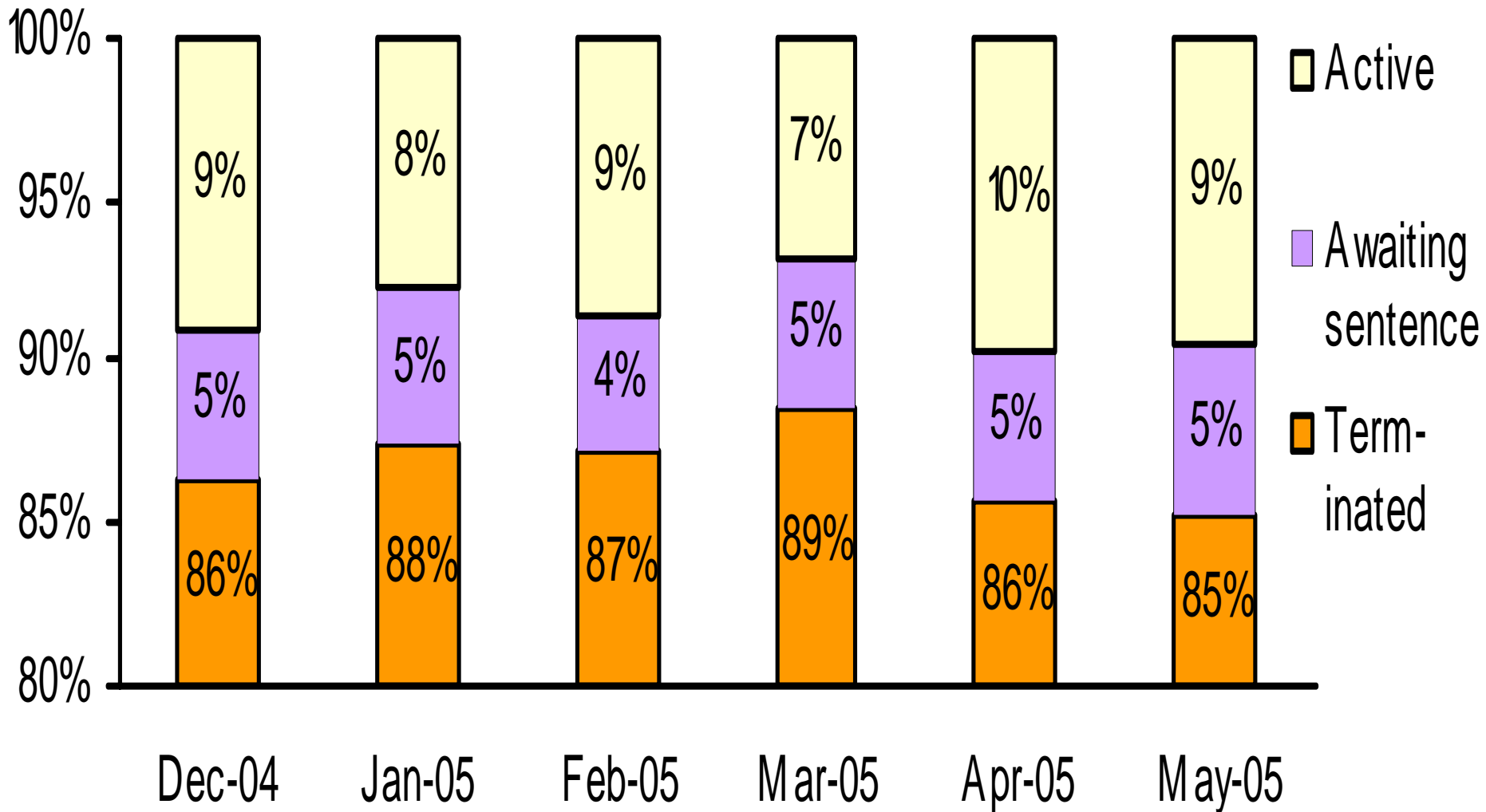
Disposition of Cases Terminated

Average monthly dispositions by quarter

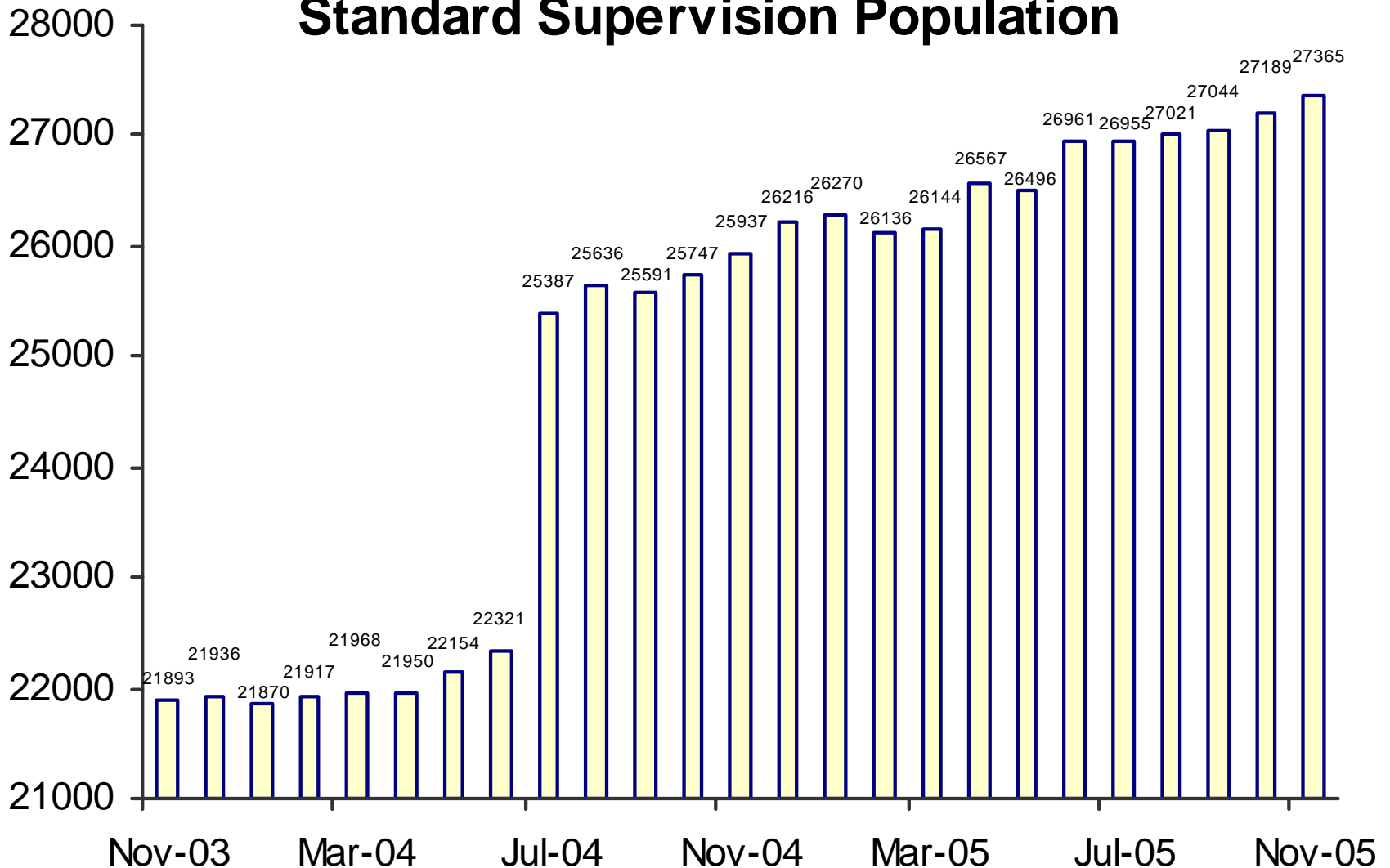
- Jan-Mar 2005
- Apr-Jun 2005
- Jul-Sep 2005
- Oct-Nov 2005



Status of Cases After 180 Days

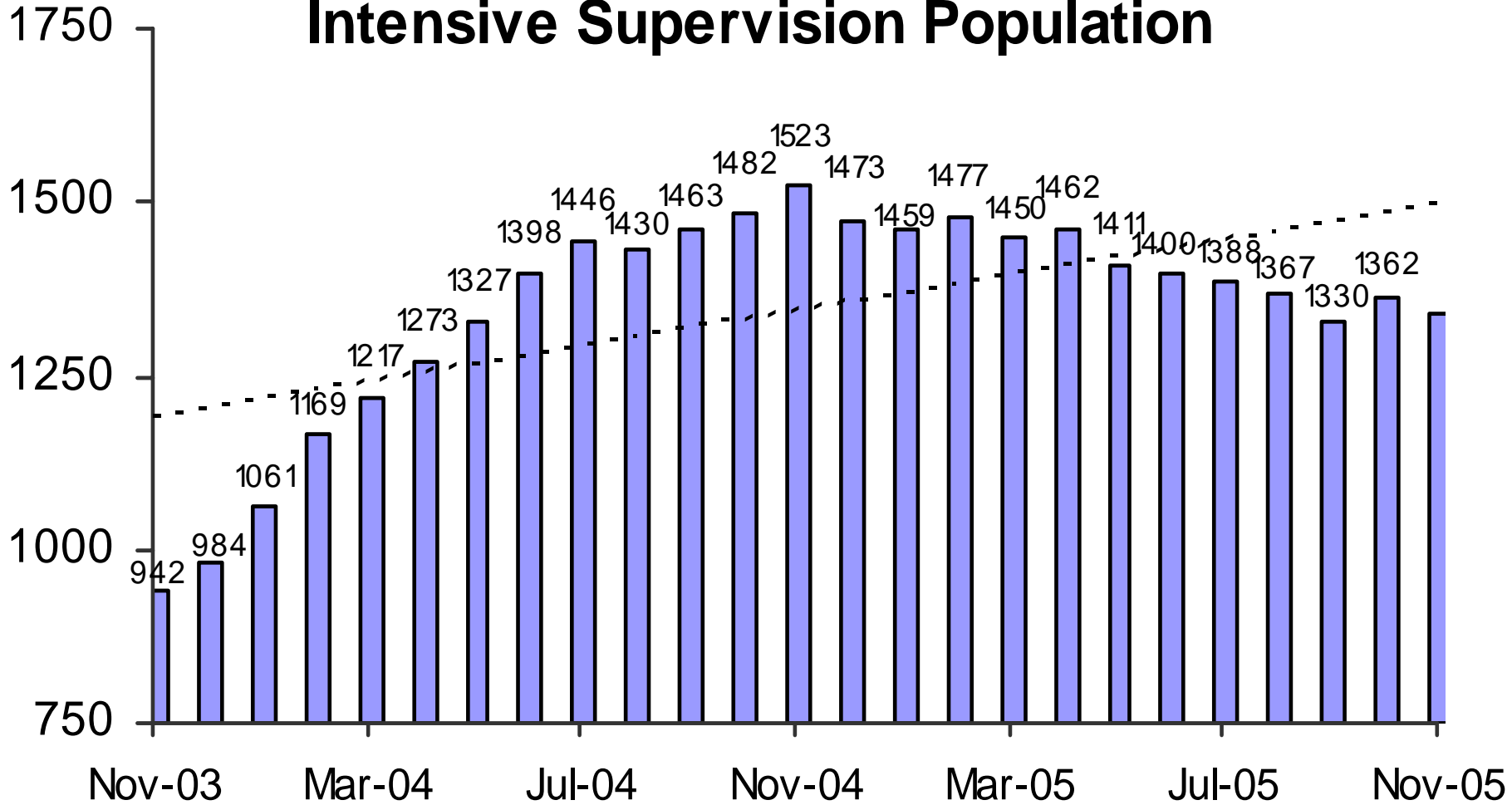


Adult Probation Standard Supervision Population

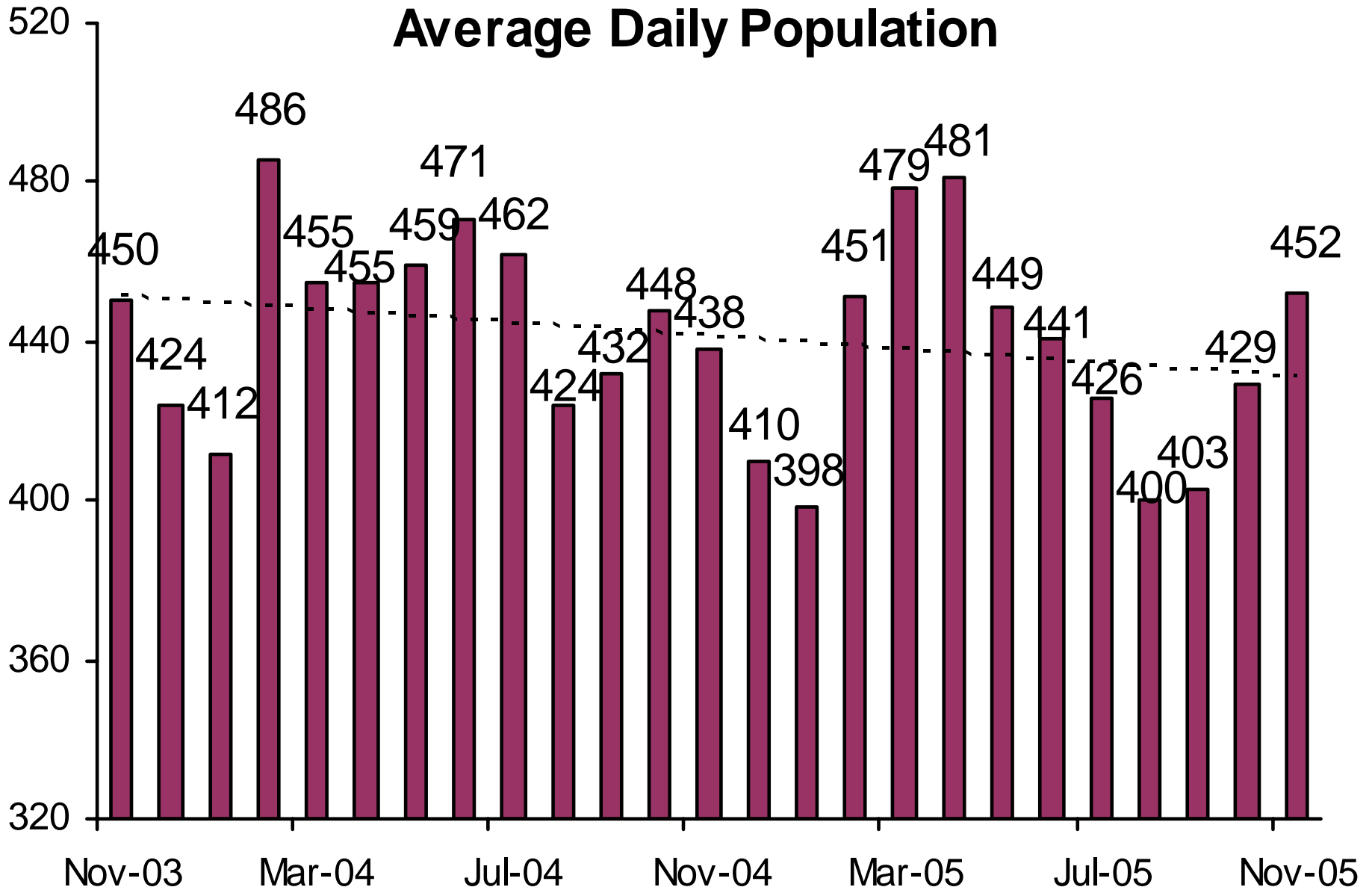


Interstate Compact and Report and Review caseloads are not included prior to July 2004. After July 2004, population as reported to the Board of Supervisors and JLBC is used.

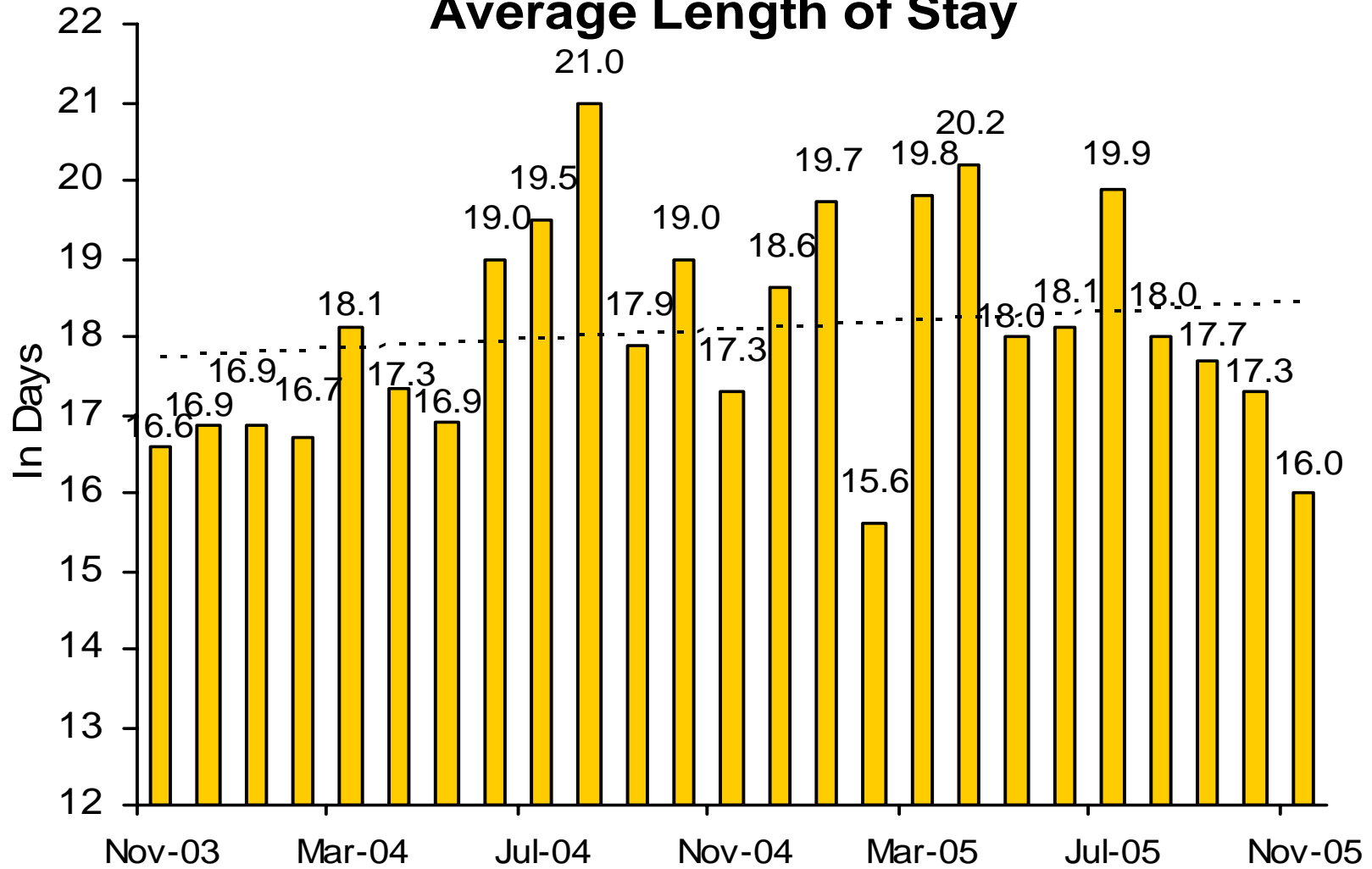
Adult Probation Intensive Supervision Population



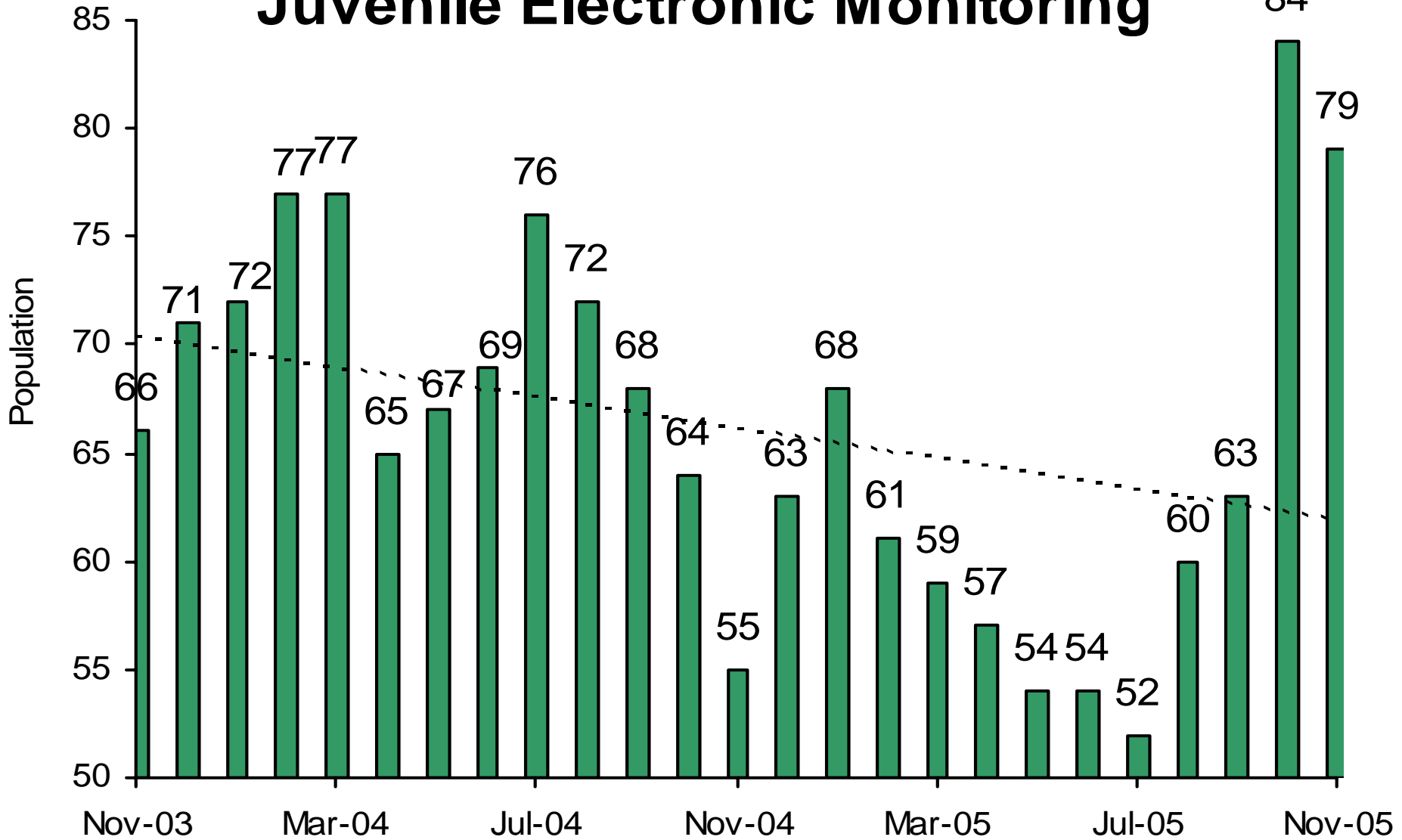
Juvenile Detention Average Daily Population



Juvenile Detention Average Length of Stay

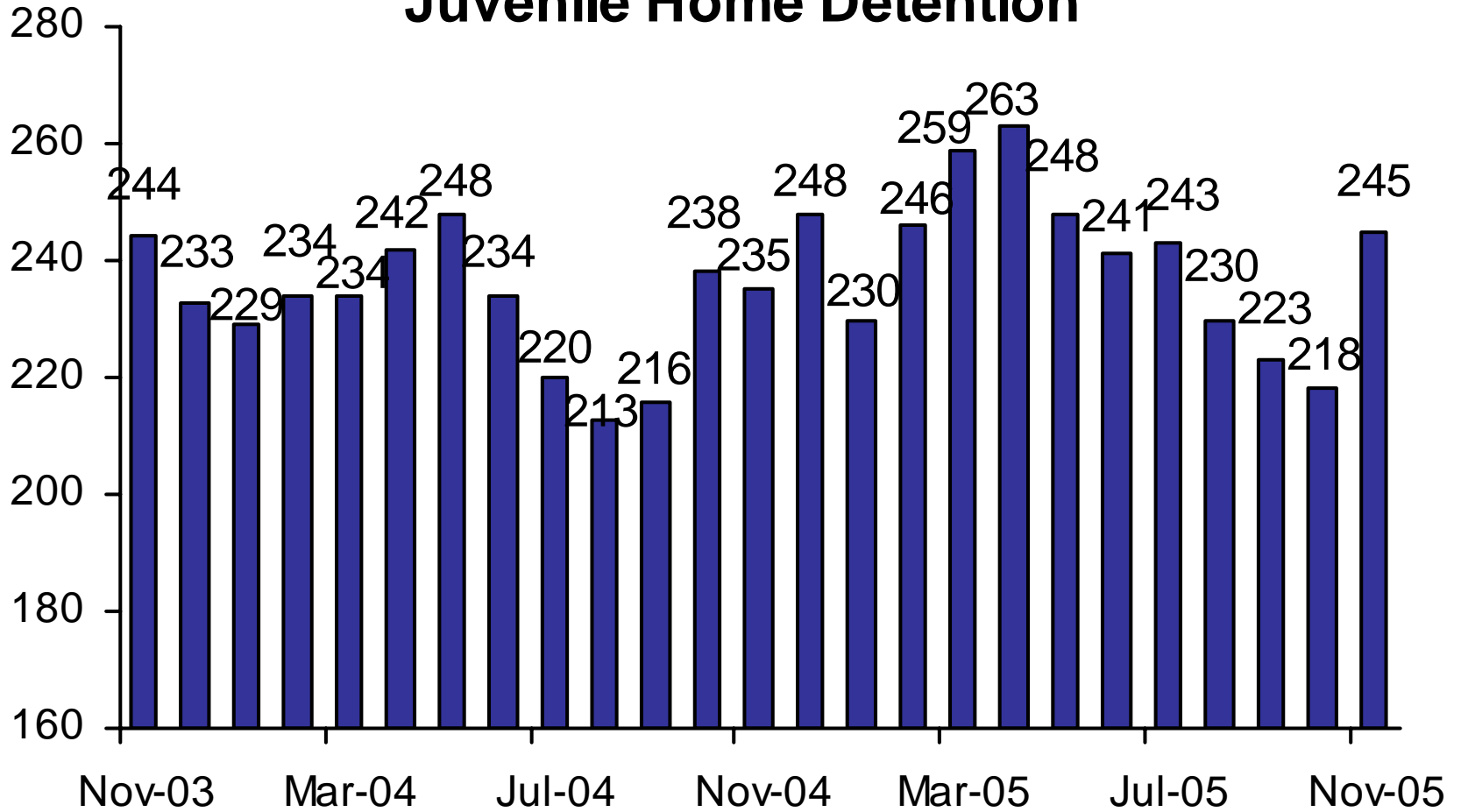


Juvenile Electronic Monitoring



The increase beginning in October 2005 is due to more accurate data collection.

Juvenile Home Detention



Juvenile Probation

■ # on standard probation ■ # on intensive probation

