



Maricopa County

Criminal Justice System

Monthly Performance Report for November 2006

	Annual Averages				Year-to-Date Avgs			Current Month		
	FY 2003	FY 2004	FY 2005	FY 2006	FY 2006	FY 2007	% Change	Nov-05	Nov-06	% Change
Sheriff's Office										
Bookings (monthly avg)	9,875	10,176	9,975	10,459	10,437	10,575	1.3%	9,935	10,258	3.3%
Releases (monthly avg)	9,857	10,196	9,934	10,485	10,363	10,719	3.4%	9,996	10,629	6.3%
Avg Daily Population	8,044	8,657	9,054	9,733	9,976	9,040	-9.4%	10,117	8,808	-12.9%
Avg Length of Stay (in days)	24.4	26	27.7	28.4	29.3	26.2	-10.6%	30.6	25.8	-15.7%
Superior Court										
Filings	2,904	3,062	2,996	3,248	3,170	2,883	-9.1%	2,975	2,630	-11.6%
Terminations	2,330	2,612	2,758	2,984	2,882	3,123	8.4%	2,890	3,136	8.5%
Clearance Rate	80.0%	85.0%	93.0%	92.1%	91.3%	108.5%	18.8%	97.1%	119.2%	22.8%
Active Pending Inventory	8,123	9,106	10,002	10,856	10,962	10,323	-5.8%	10,826	9,757	-9.9%
Trials Completed	59	42	51	68	60	89	48.3%	74	96	29.7%
Trial Rate	2.0%	1.4%	1.7%	2.1%	1.9%	3.1%	63.2%	2.5%	3.7%	48.0%
Justice Courts Filings										
DUI	949	986	1,023	971	877	1,021	16.4%	690	753	9.1%
All other Criminal Traffic	1,969	1,900	2,252	3,491	2,418	4,833	99.9%	2,263	5,108	125.7%
Civil Traffic	13,500	12,353	14,290	12,824	12,929	11,862	-8.3%	12,419	12,222	-1.6%
Misdemeanor	2,714	2,531	2,581	2,052	1,945	2,293	17.9%	1,293	1,947	50.6%
Small Claims	1,694	1,796	1,578	1,144	1,178	1,176	-0.2%	1,067	1,181	10.7%
Forcible Detainers	6,456	6,859	6,842	7,065	7,505	6,367	-15.2%	6,863	5,203	-24.2%
Other Civil	2,311	2,579	2,763	2,628	2,645	4,628	75.0%	2,697	5,751	113.2%
Orders of Protection	542	523	485	508	530	472	-10.9%	476	431	-9.5%
Injunctions against Harassment	436	463	495	446	450	465	3.3%	430	469	9.1%
Adult Probation										
Pretrial General Supervision	700	990	978	775	800	859	7.4%	817	743	-9.1%
Pretrial Intensive Supervision	331	657	816	1,077	992	1,175	18.4%	1,071	1,130	5.5%
Pretrial Electronic Monitoring	97	153	164	190	177	238	34.5%	180	265	47.2%
Standard Probation Supervision	25,400	25,055	26,091	27,896	27,115	29,822	10.0%	27,365	30,214	10.4%
Intensive Probation Supervision	1,267	1,078	1,456	1,321	1,357	1,287	-5.2%	1,338	1,293	-3.4%
Juvenile Detention and Probation										
Avg Daily Detention Pop	401	431	443	433	422	416	-1.4%	452	422	-6.6%
Avg Length of Stay (in days)	15.1	16.6	18.7	18.5	17.8	17.4	-2.2%	16	18.5	15.6%
Standard Prob.	4,387	4,232	4,108	4,055	4,059	4,287	5.6%	4,013	4,240	5.7%
Intensive Prob.	659	518	547	527	549	517	-5.8%	539	494	-8.3%



Maricopa County

Criminal Justice System

CRIMINAL JUSTICE SYSTEM NEWS – NOVEMBER 2006

Adult Incarceration

As is typical this time of year, **bookings decreased** from 10,746 in October to 10,258 in November. **Average Daily Population decreased** for the seventh month in a row, from 8,966 to 8,808. Fiscal year 07 to-date comparisons show that ADP is down 9.4% compared to the same time period last fiscal year. The **pretrial, sentenced, and hold populations all decreased** from October to November; pretrial from 5,521 to 5,408, sentenced from 3,035 to 3,015, and holds from 366 to 325.

Overall Average Length of Stay decreased slightly from 25.9 days in October to 25.8 days in November. Fiscal year 07 to-date comparisons show that ALOS is down 10.6% compared to the same time period last fiscal year. **The ALOS measurement for agency holds decreased** from 67.6 to 65.0 days. **Pretrial and sentenced ALOS increased** from October to November: pretrial from 6.7 to 8.6 days and sentenced from 27.5 to 30.1 days. Breaking down the pretrial population, felony ALOS increased from 9.8 to 13.4 days, while misdemeanor ALOS decreased from 3.4 to 3.1 days.

Superior Court Filings & Case Processing

Criminal filings decreased while terminations increased in November: filings fell from 2,879 to 2,630 and terminations grew from 3,032 to 3,136. The resulting termination rate was 119.2%. **The active pending case inventory decreased** from 10,216 to 9,757. **Filings into the RCC decreased in November compared to October, while EDC filings remained nearly the same.** RCC filings went from 1,698 to 1,484 while EDC filings went from 824 to 826. **96 trials were completed in November, a slight decrease from October's 99.** **The November trial rate rose from October's 3.4% to 3.7%.**

Justice Court Filings

Civil traffic filings increased from October to November, from 11,552 to 12,222. The numbers of **Injunctions against Harassment decreased, from 549 to 469**

Adult Probation

General and intensive pretrial supervision decreased in November compared to October: general from 818 to 743 and intensive from 1,193 to 1,130. **Electronic monitoring populations increased** from 245 to 265.

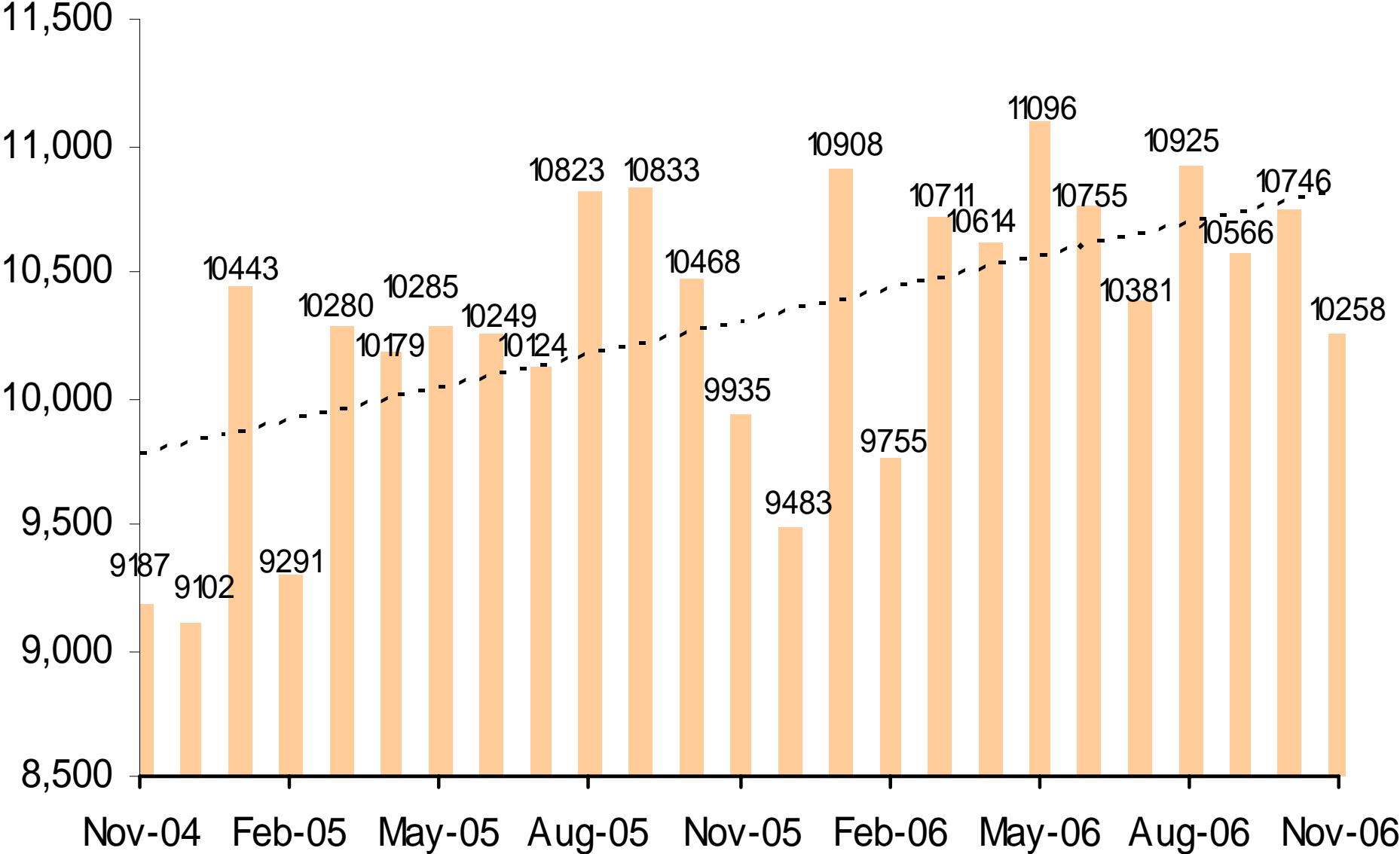
Levels of standard probation supervision increased in November compared to October, from 29,697 to 30,214. **November's levels of intensive probation (1,293) remained nearly the same as October's 1,286.**

Juvenile Detention and Probation

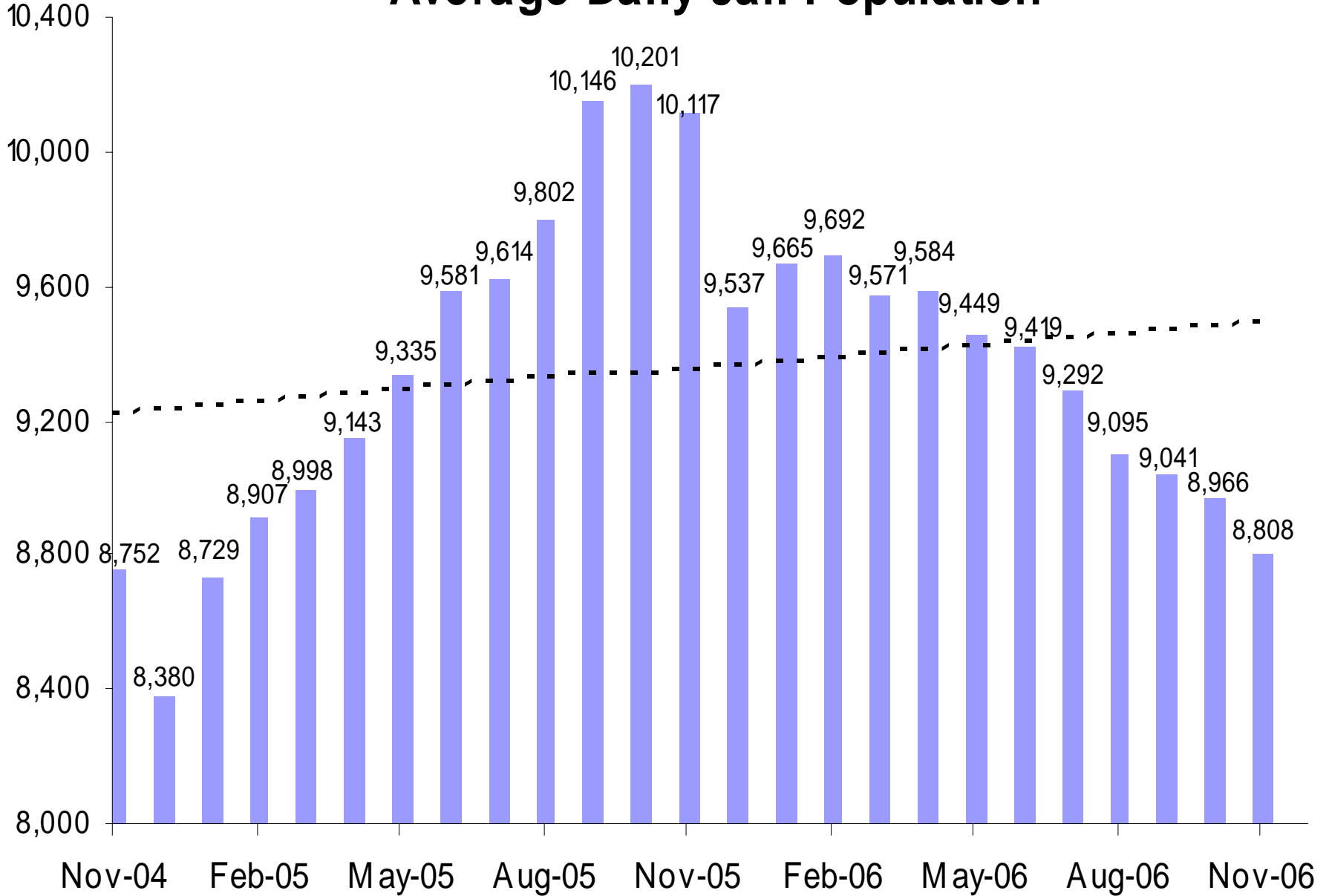
The Average Daily Detention Population decreased slightly from 425 in October to 422 in November. **ALOS increased** from 17.3 to 18.5 days. **November's Electronic Monitoring was 144, compared to October's 140.** **Home detention increased** from 221 to 244.

Levels of juvenile standard and intensive probation decreased from October to November: standard from 4,337 to 4,240 and intensive from 517 to 494.

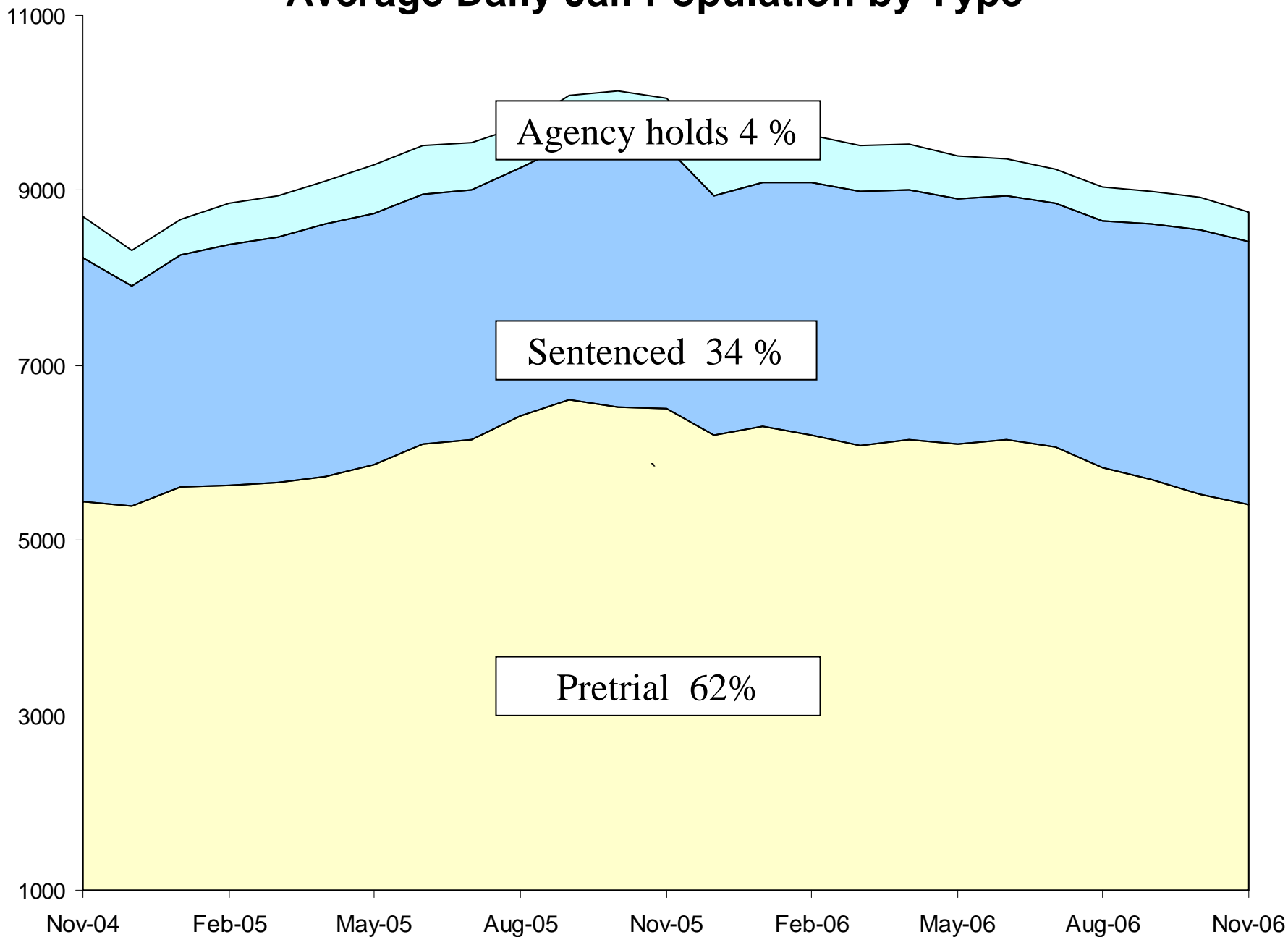
Jail Bookings



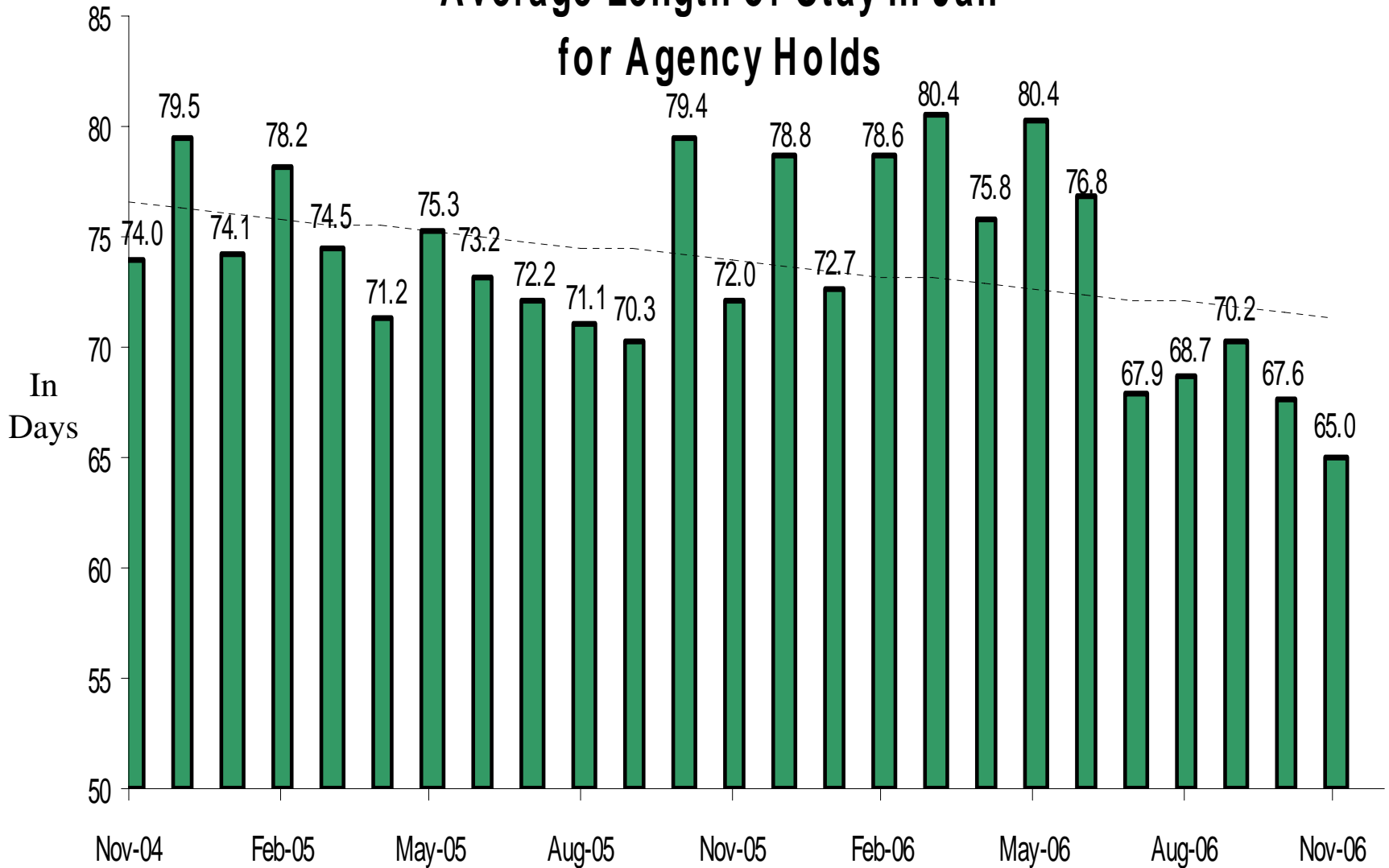
Average Daily Jail Population



Average Daily Jail Population by Type

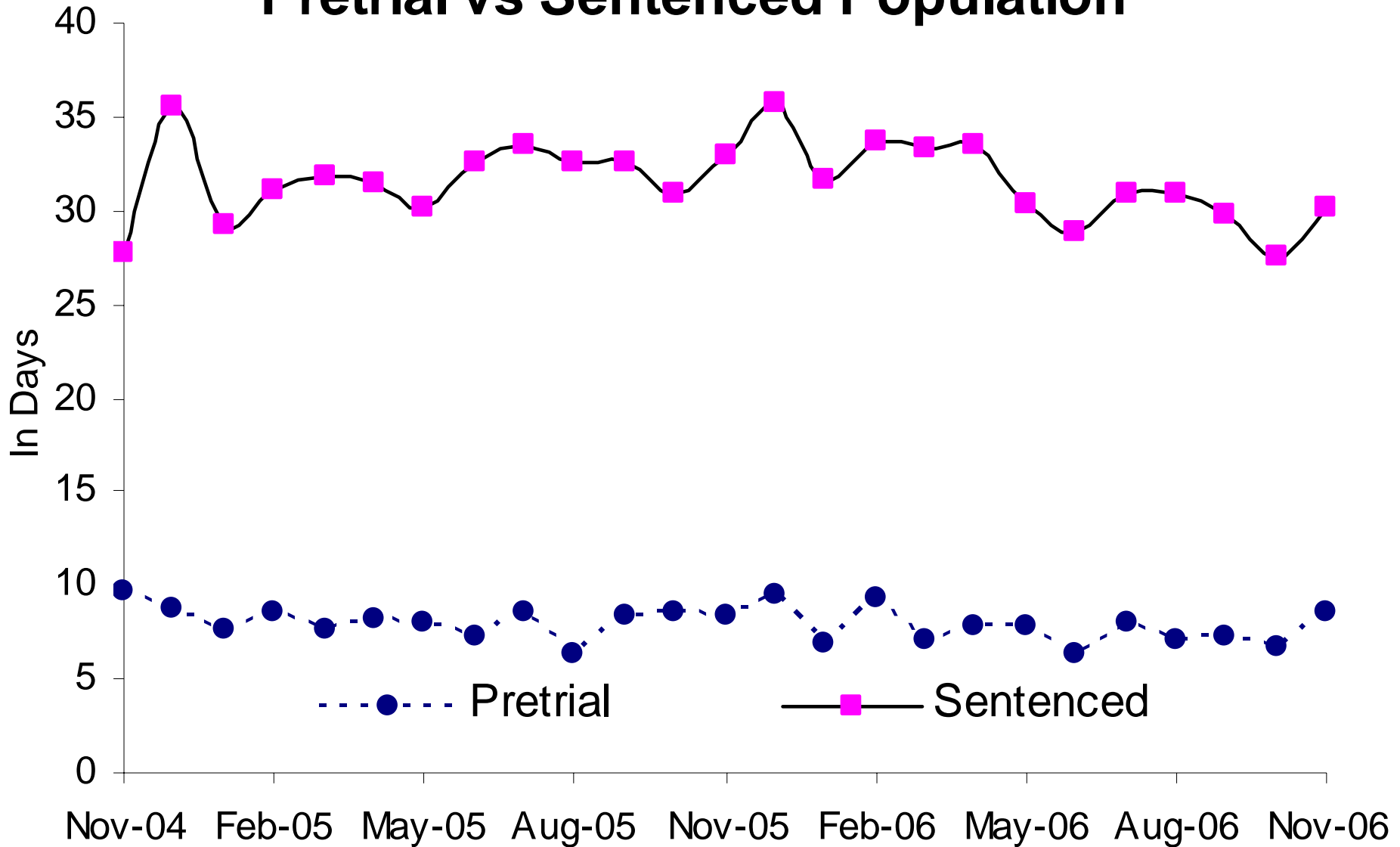


Average Length of Stay in Jail for Agency Holds

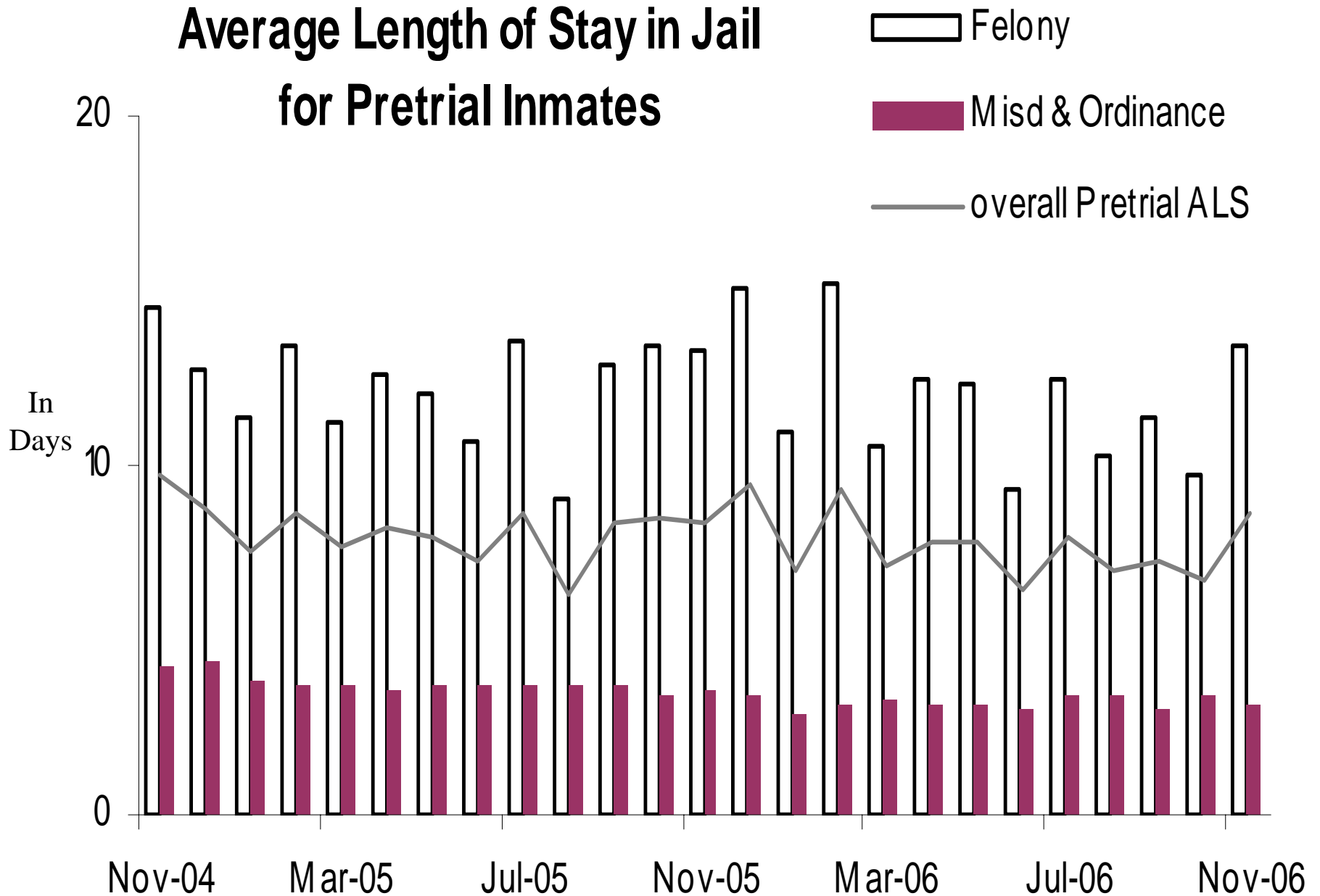


66% Dept of Corrections, 15% Federal agencies, 19% other

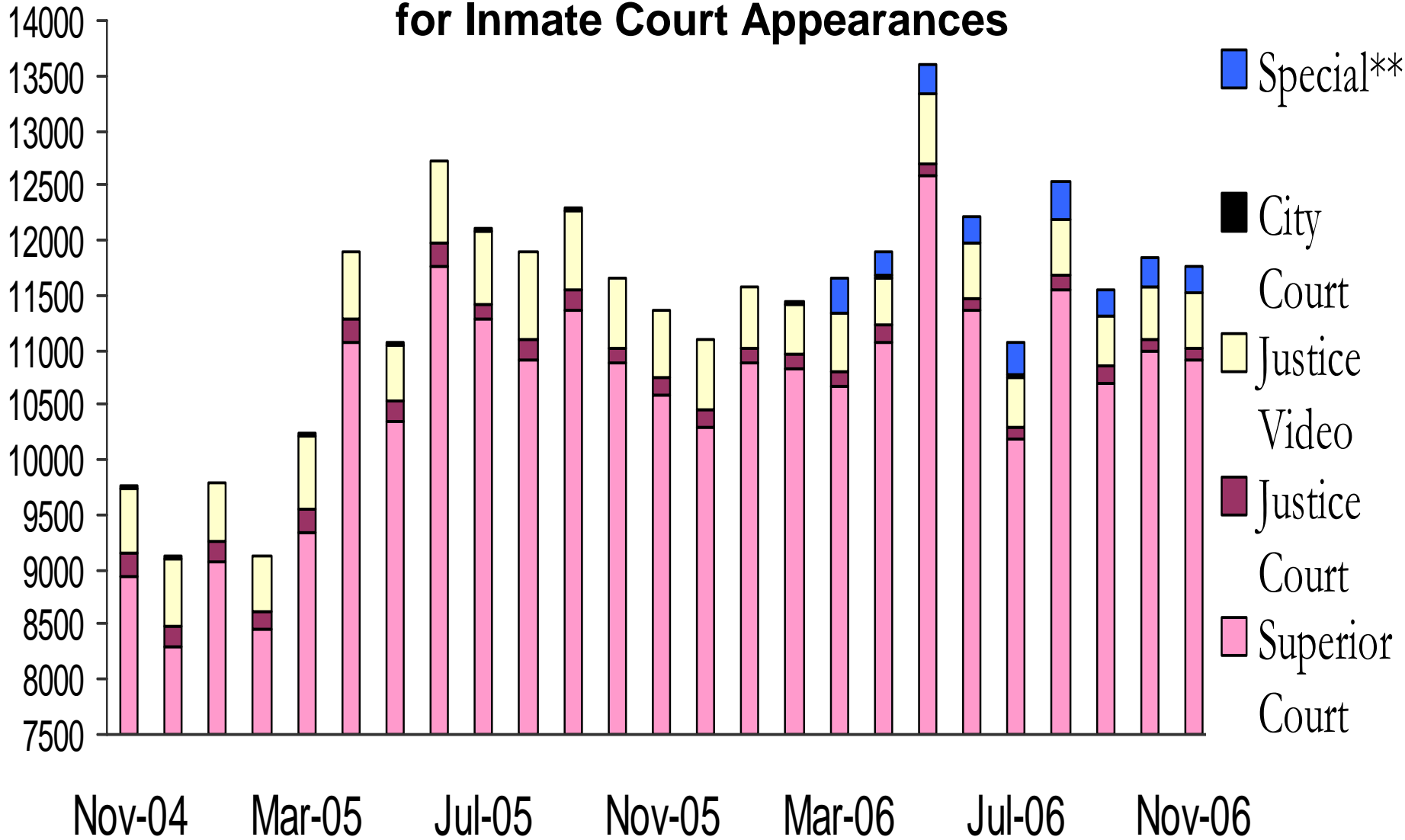
Average Length of Stay in Jail Pretrial vs Sentenced Population



Average Length of Stay in Jail for Pretrial Inmates



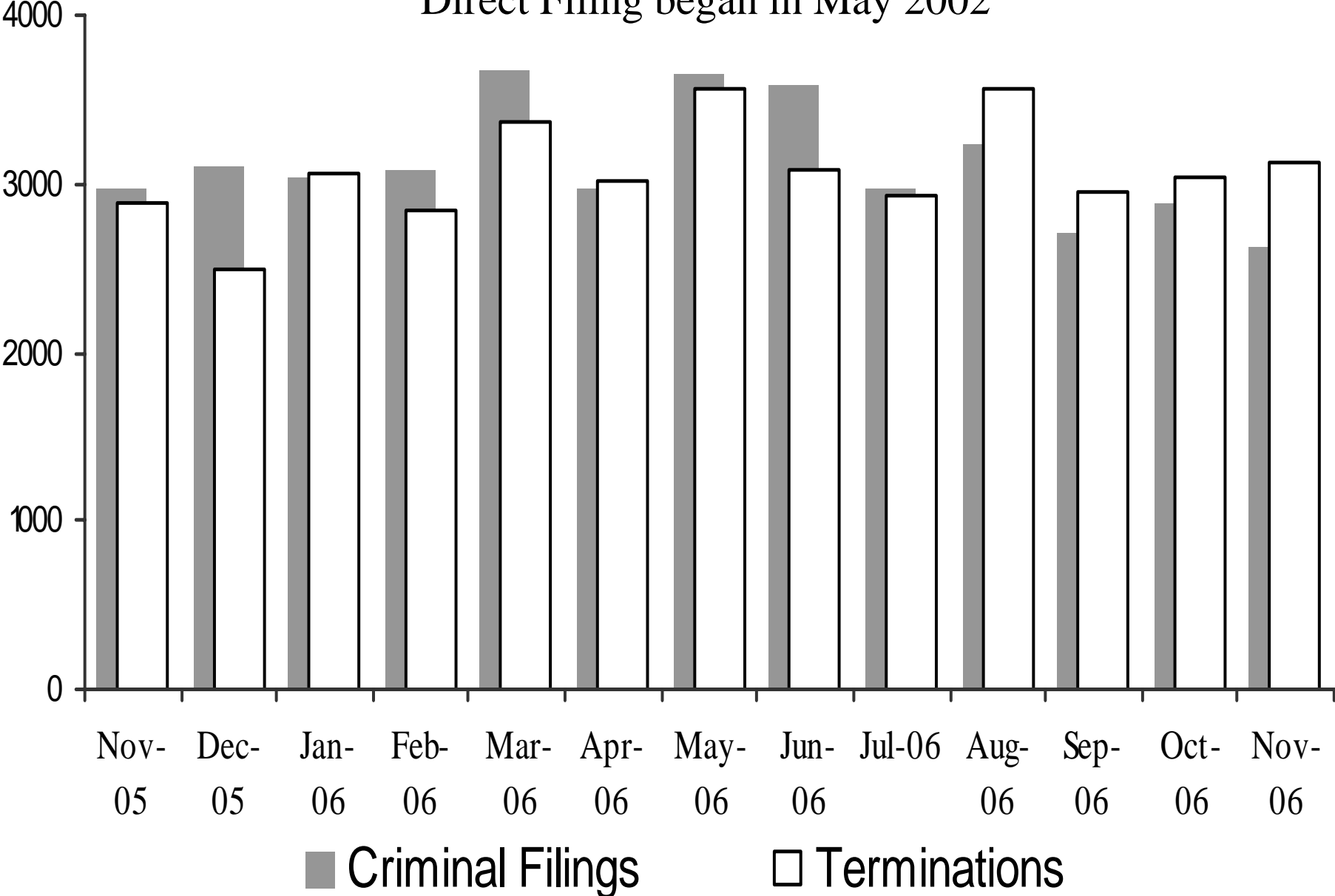
Sheriff's Office Transports for Inmate Court Appearances



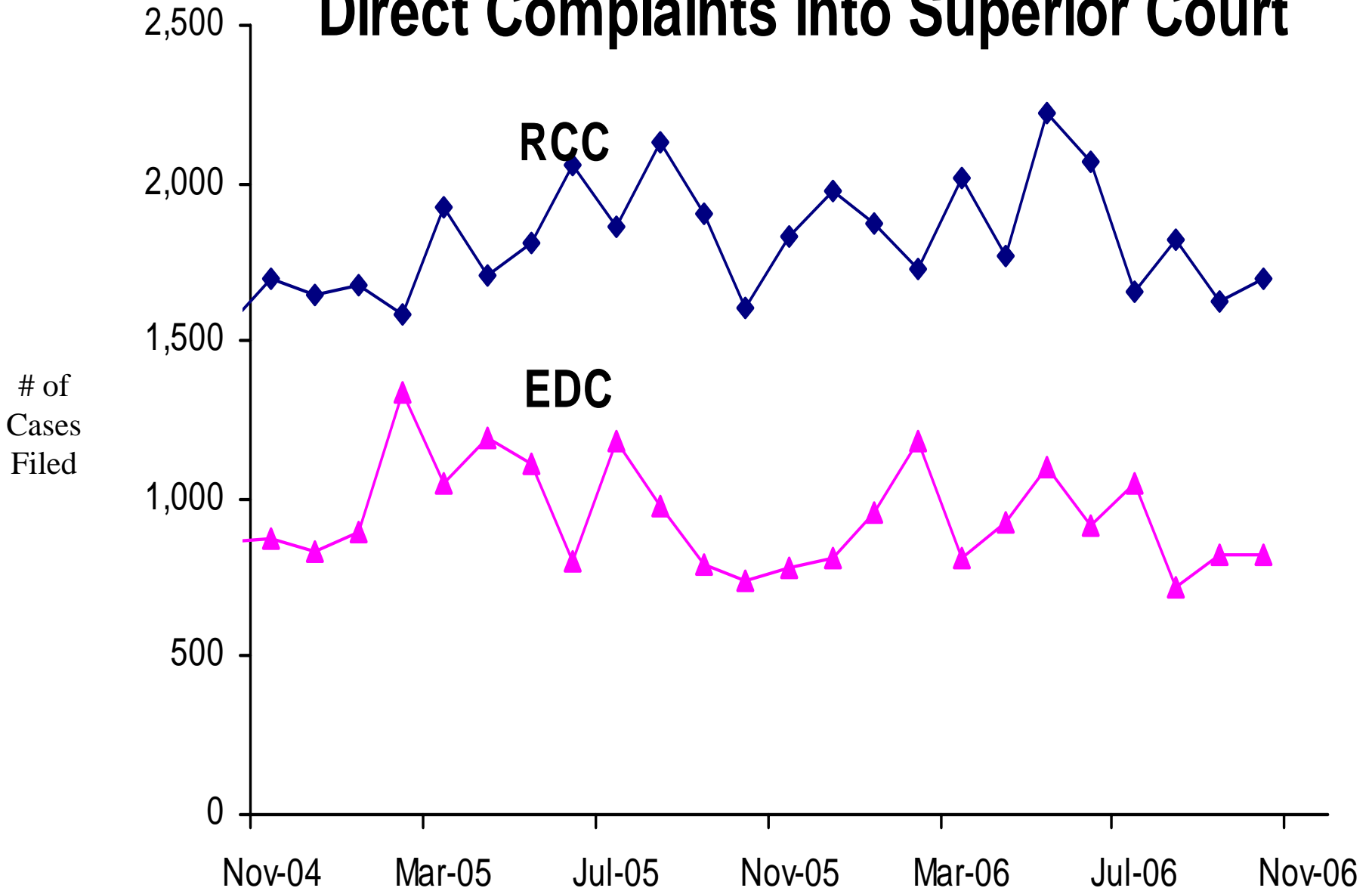
“Special” cases added in March 2006 include Downtown Remands, SEJD Remands, and SEJD Unscheduled.

Superior Court Filings and Terminations

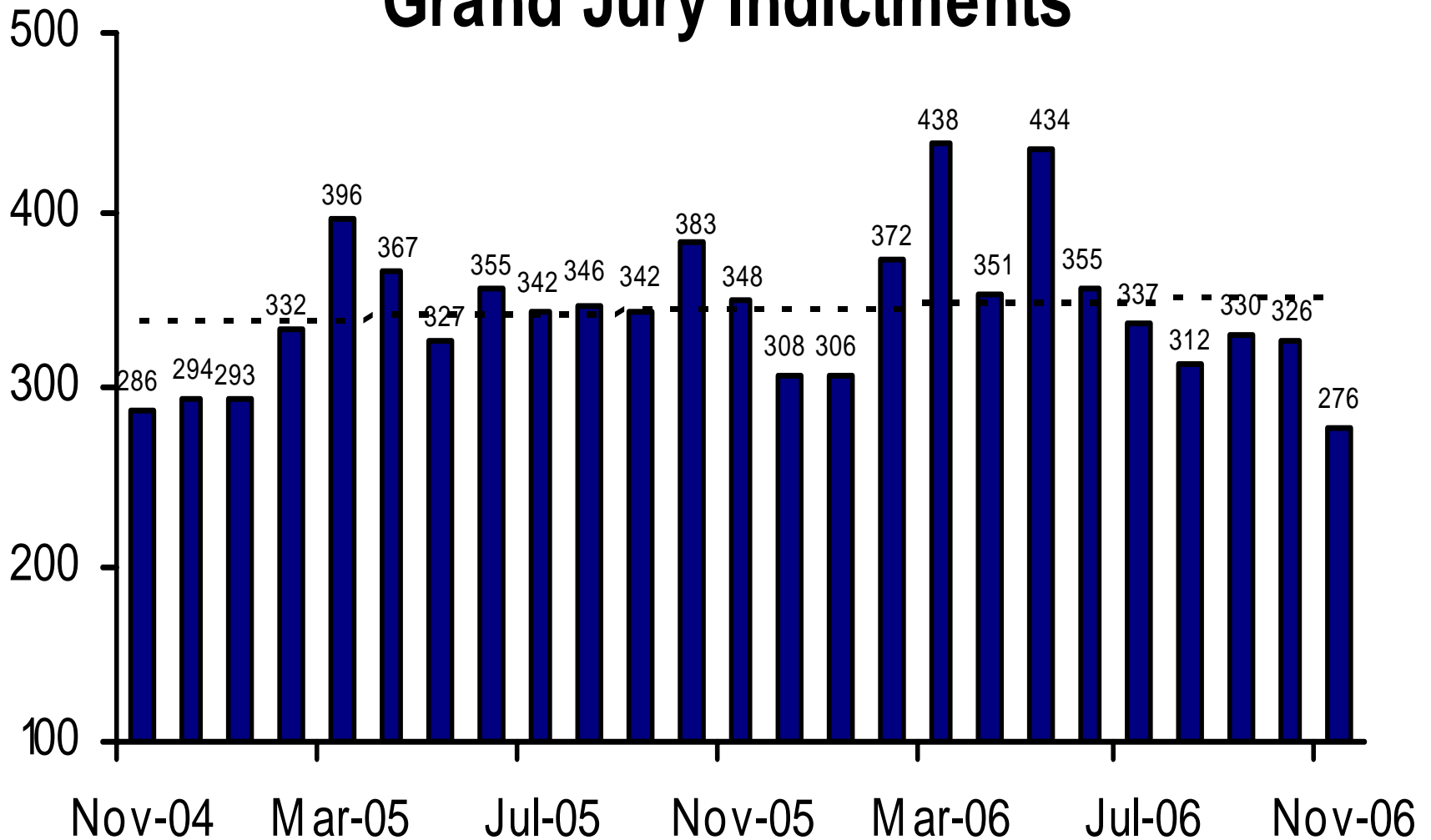
Direct Filing began in May 2002



Direct Complaints into Superior Court

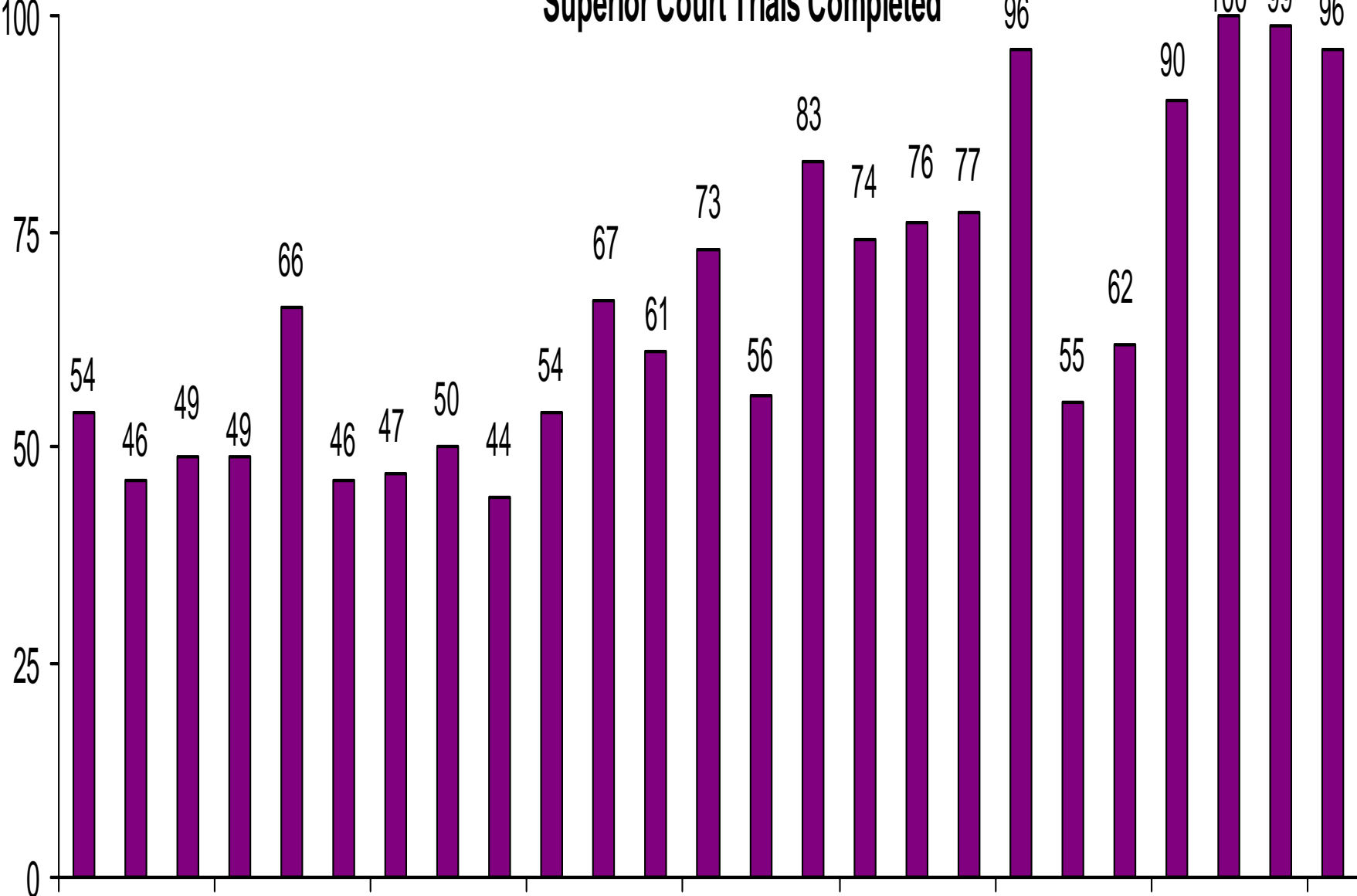


Grand Jury Indictments



These numbers do not include notices of supervening indictments, non-EDC direct complaints, and juvenile direct complaints.

Superior Court Trials Completed



Nov-04

Feb-05

May-05

Aug-05

Nov-05

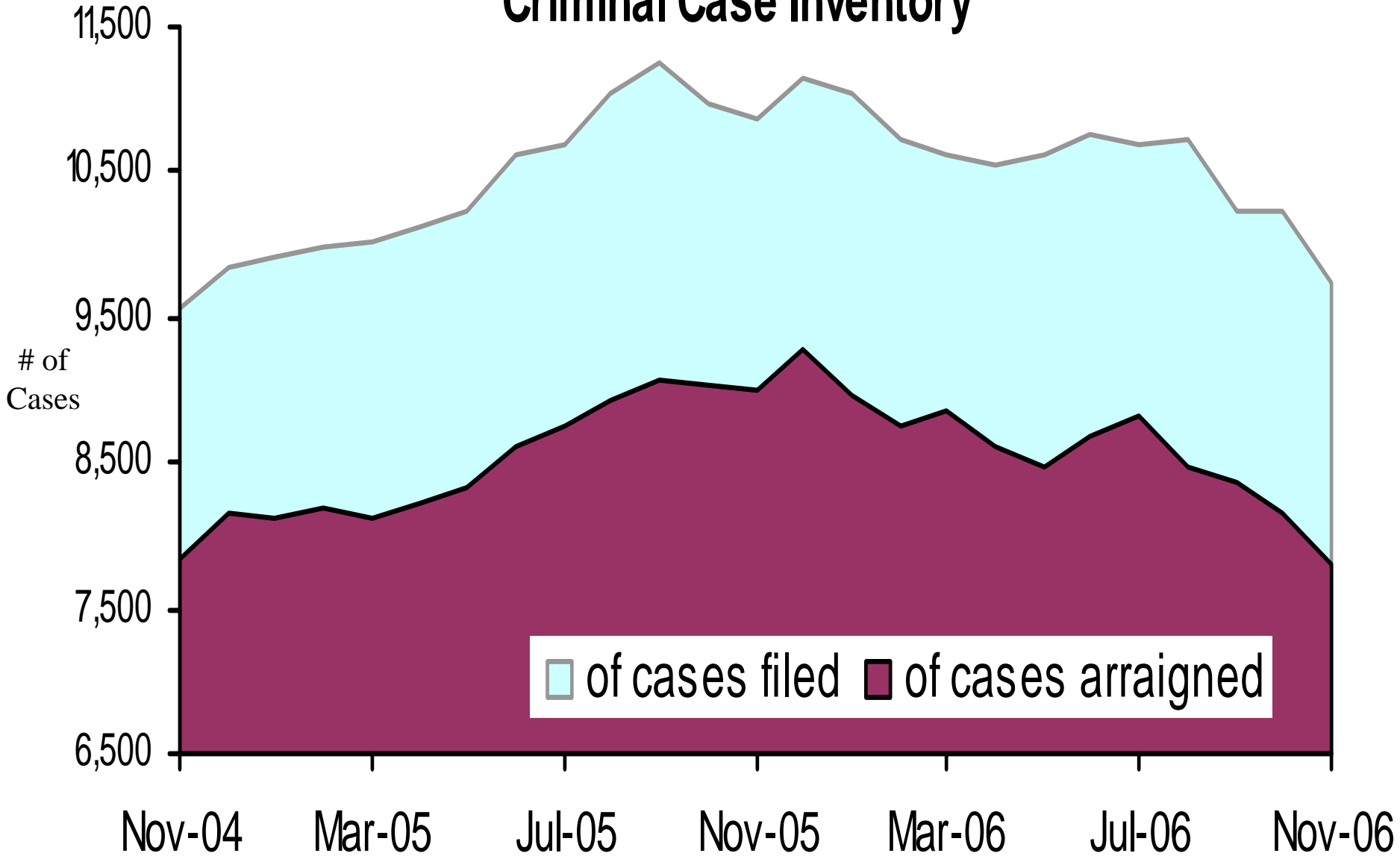
Feb-06

May-06

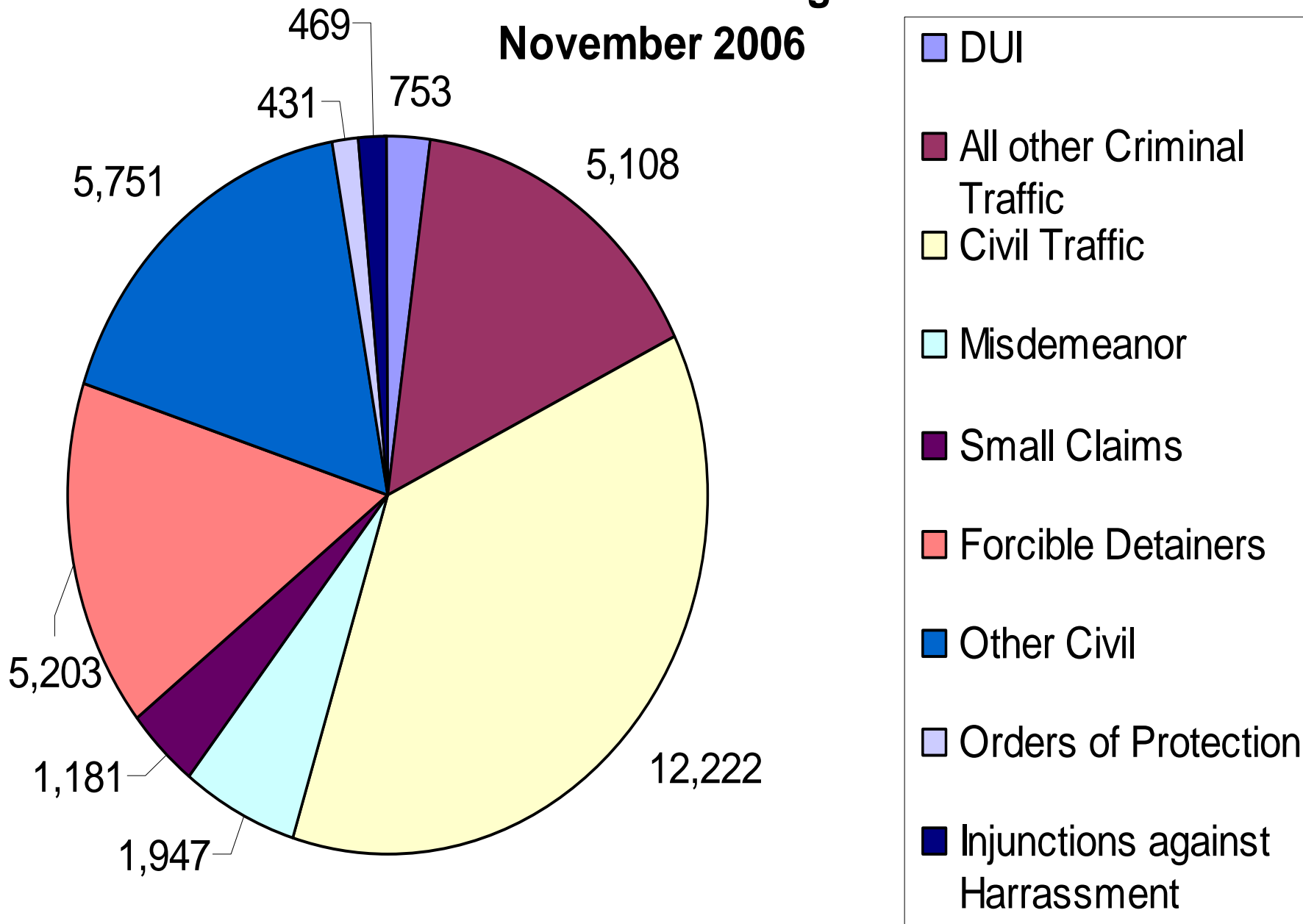
Aug-06

Nov-06

Active Pending Criminal Case Inventory



Justice Court Filings November 2006

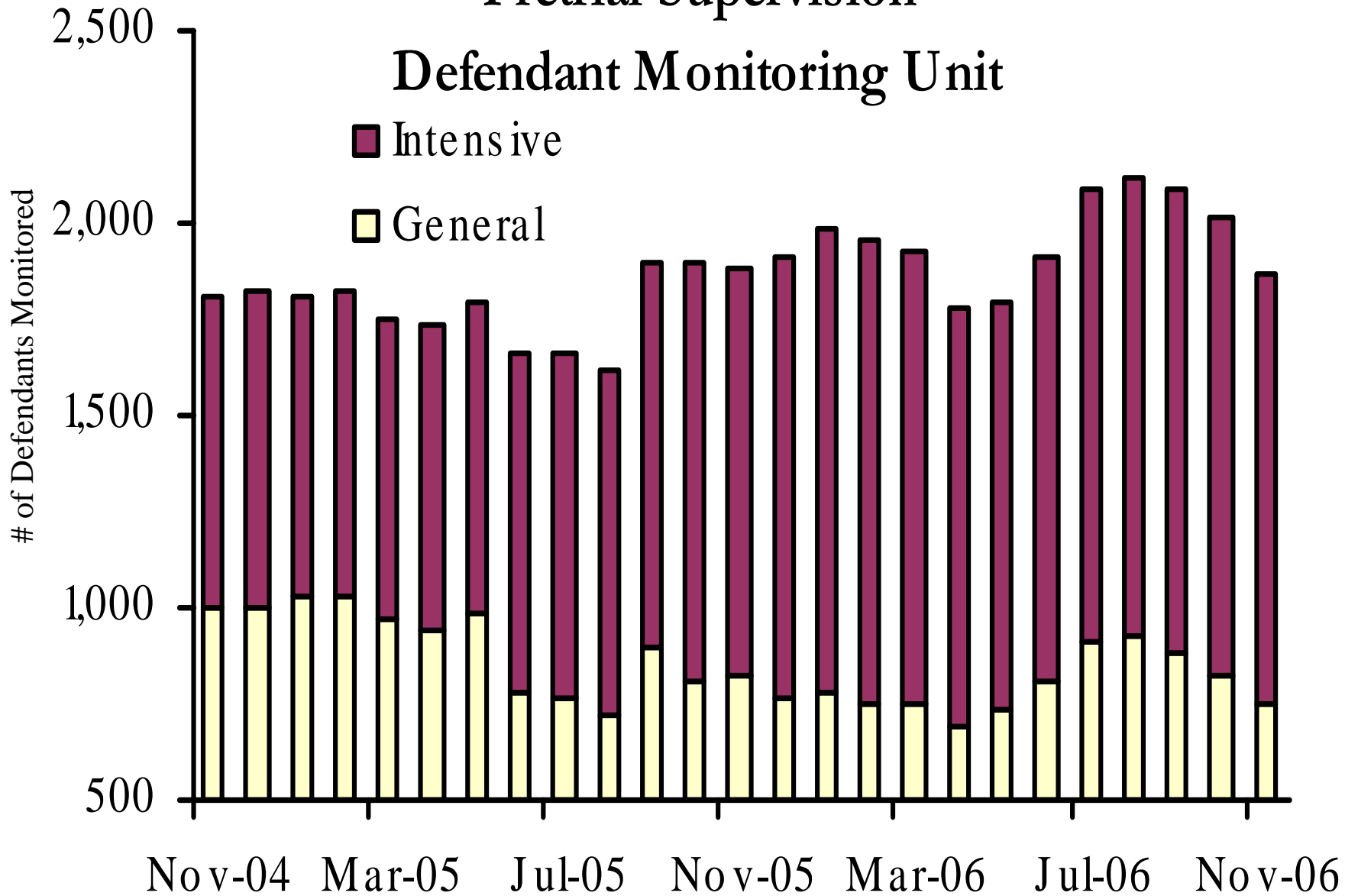


Pretrial Supervision

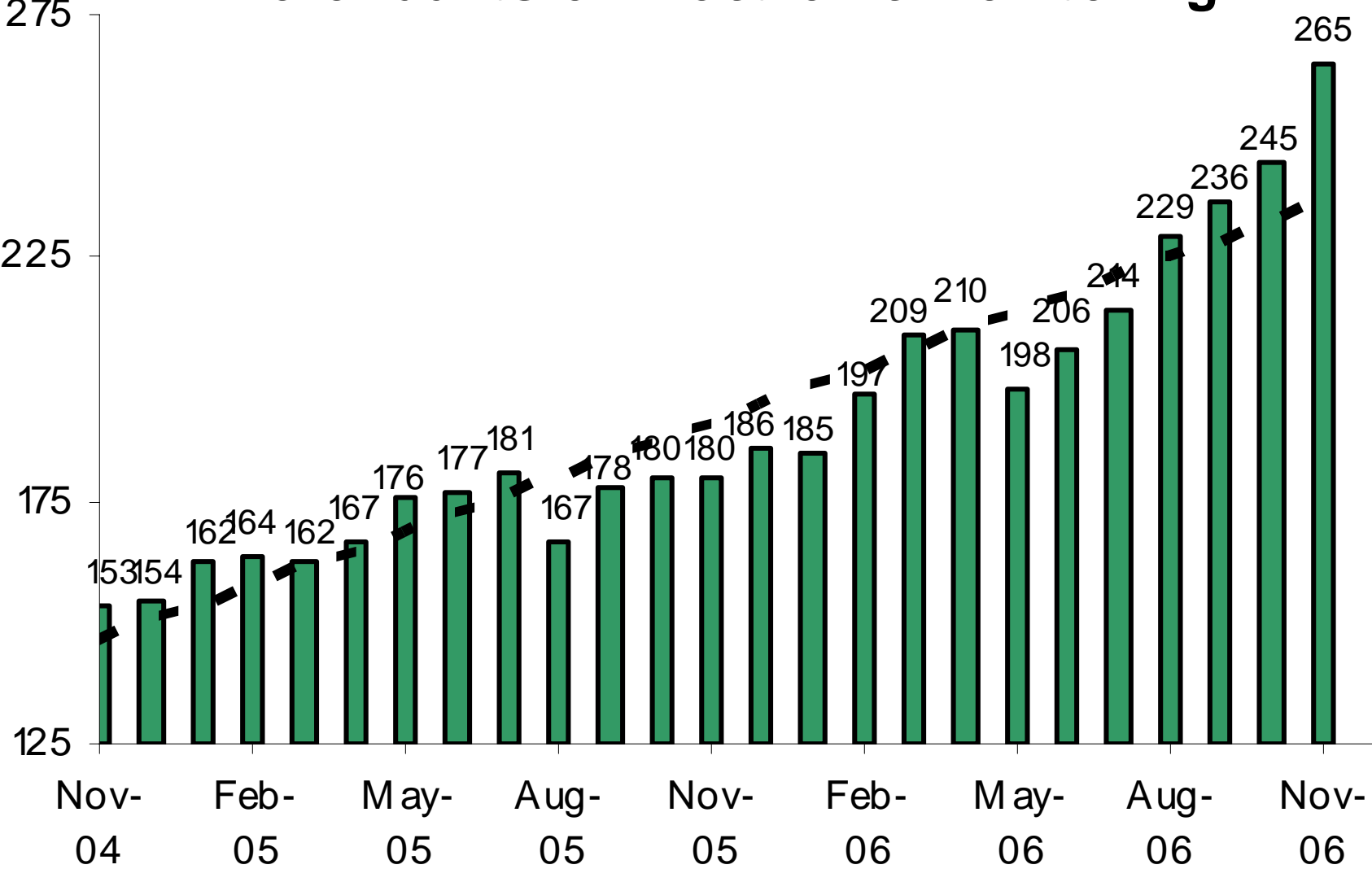
Defendant Monitoring Unit

Intensive

General



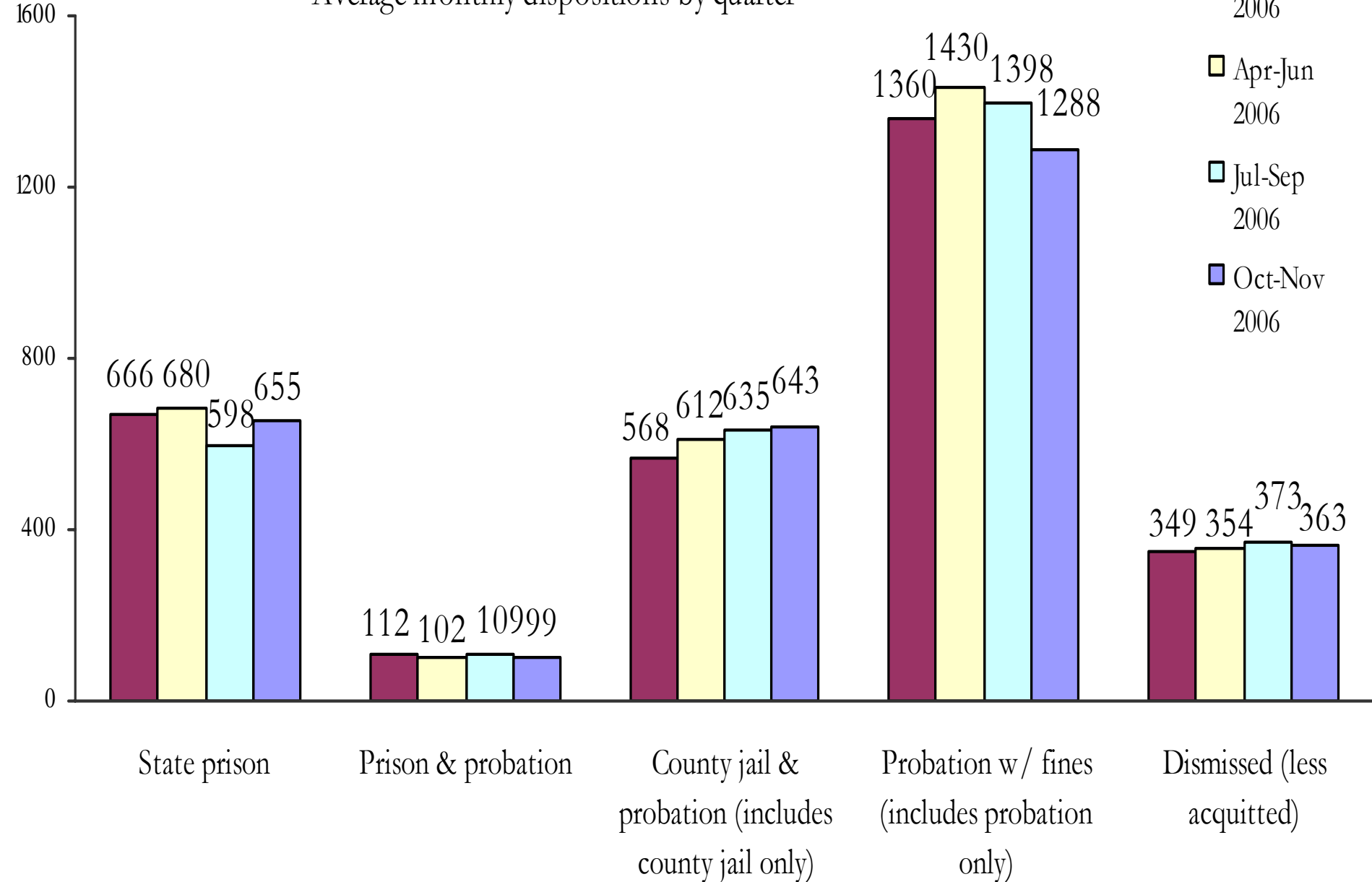
Pretrial Supervision Defendants on Electronic Monitoring



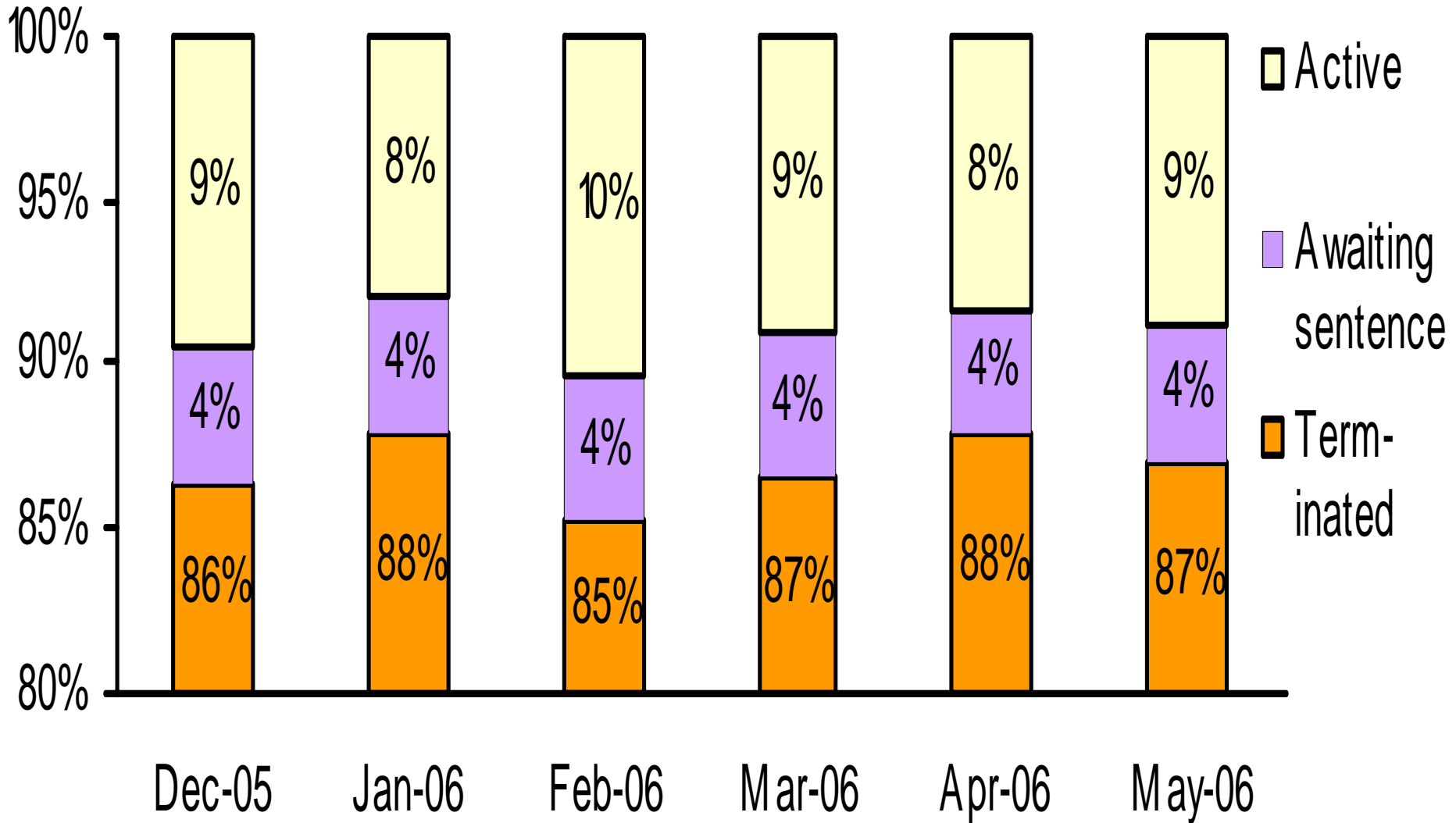
Disposition of Cases Terminated

Average monthly dispositions by quarter

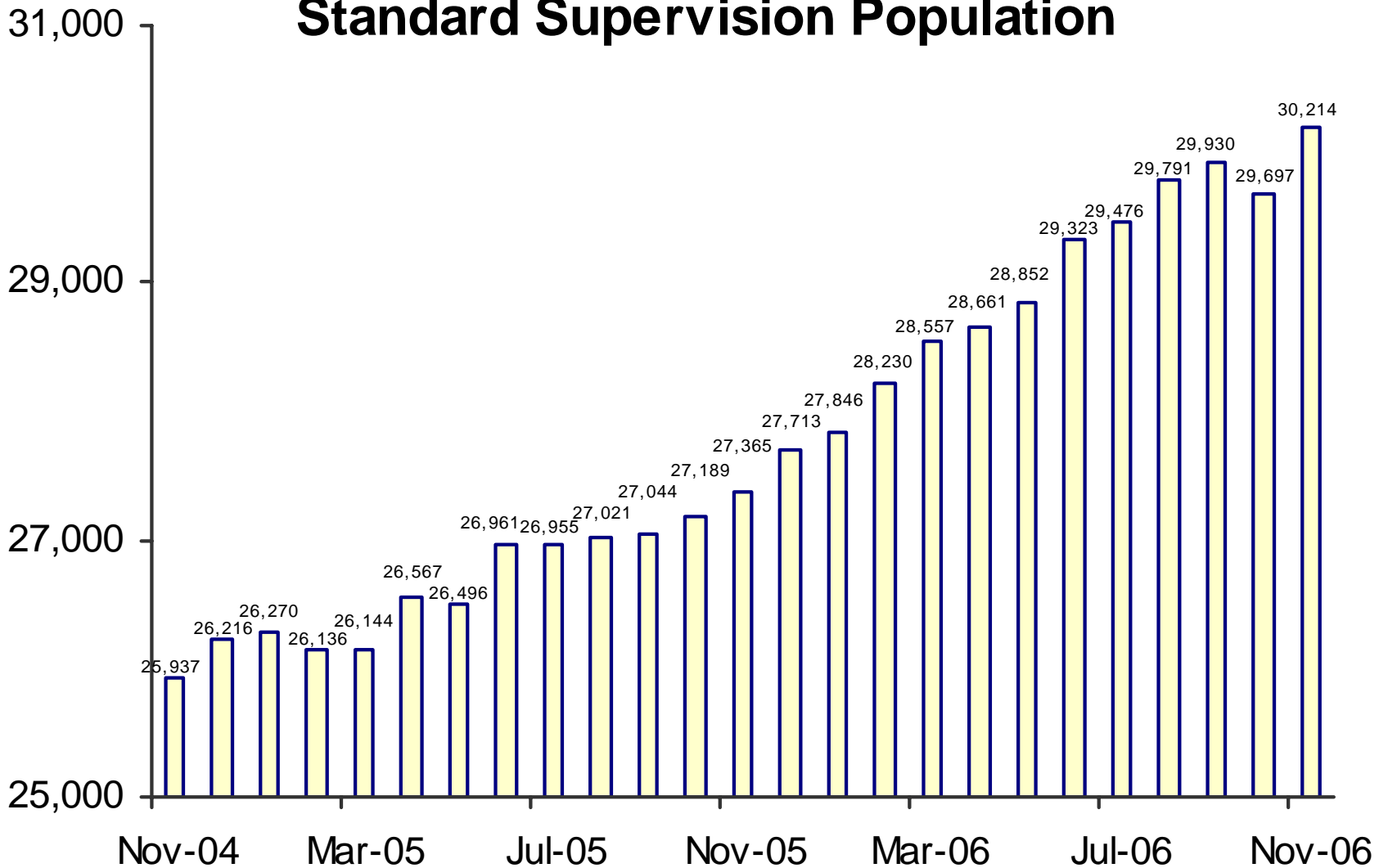
- Jan-Mar 2006
- Apr-Jun 2006
- Jul-Sep 2006
- Oct-Nov 2006



Status of Cases After 180 Days



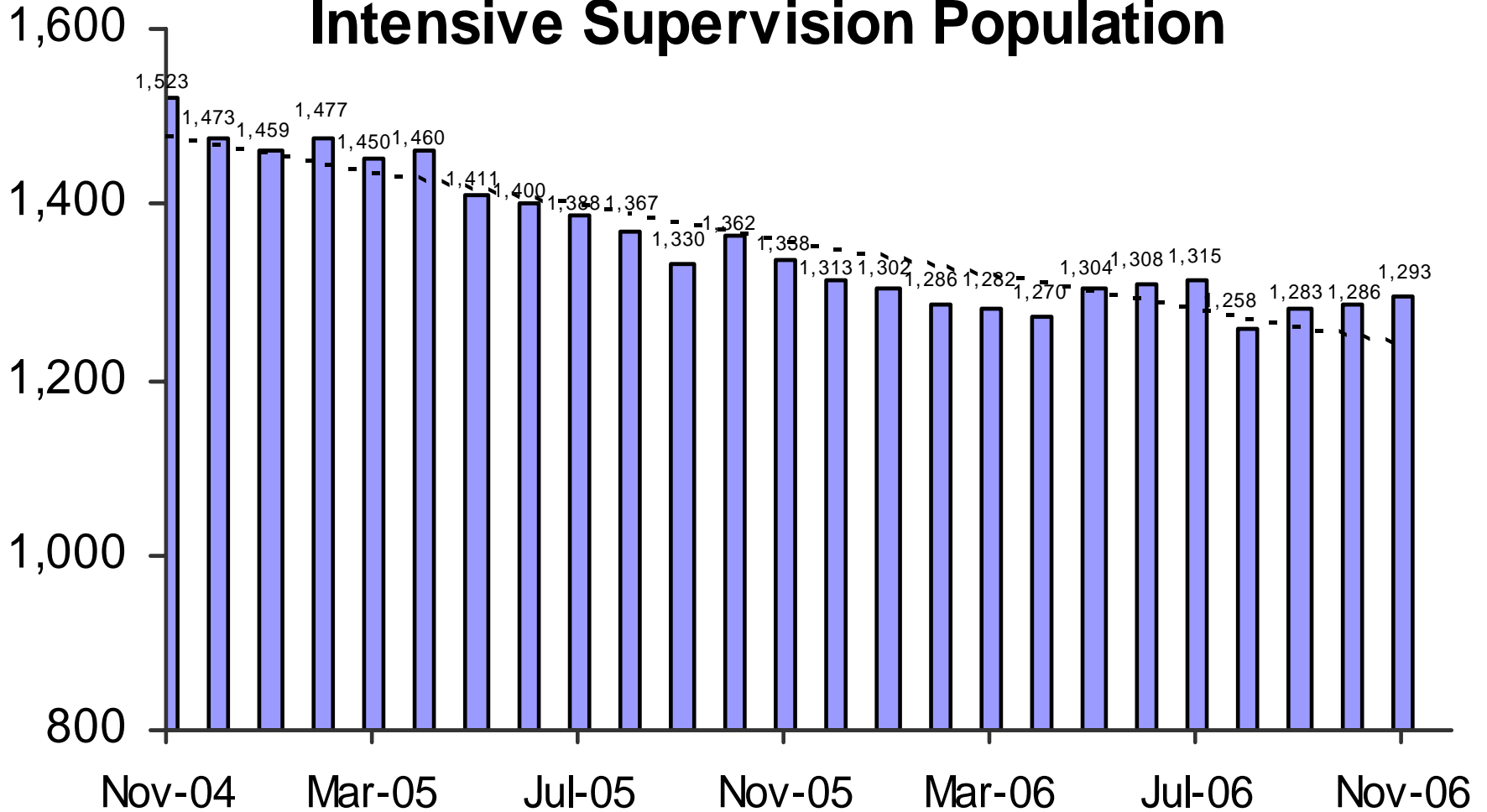
Adult Probation Standard Supervision Population



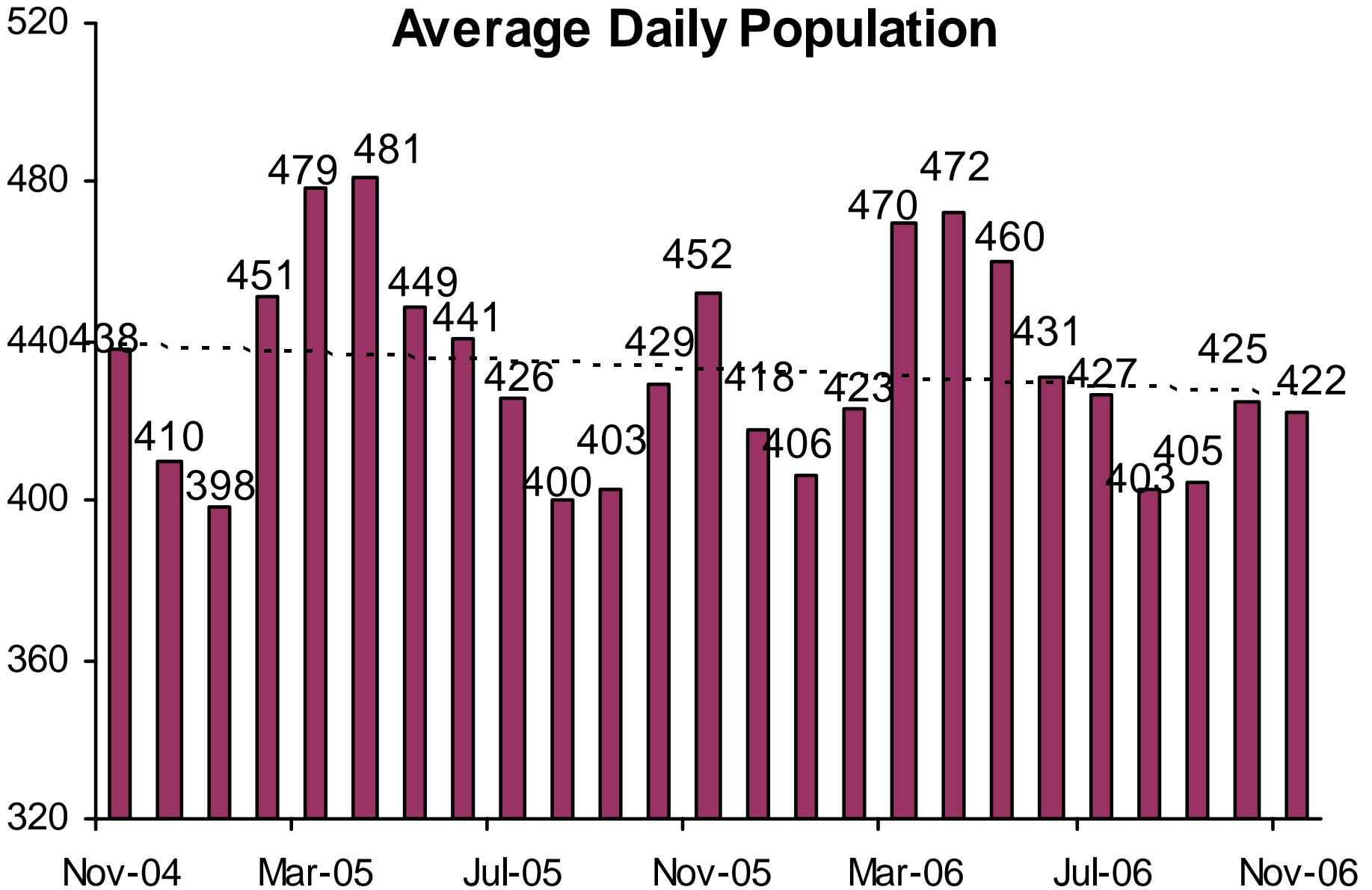
This population includes Interstate Compact and Report and Review caseloads, as reported to the Board of Supervisors and JLBC.

Adult Probation

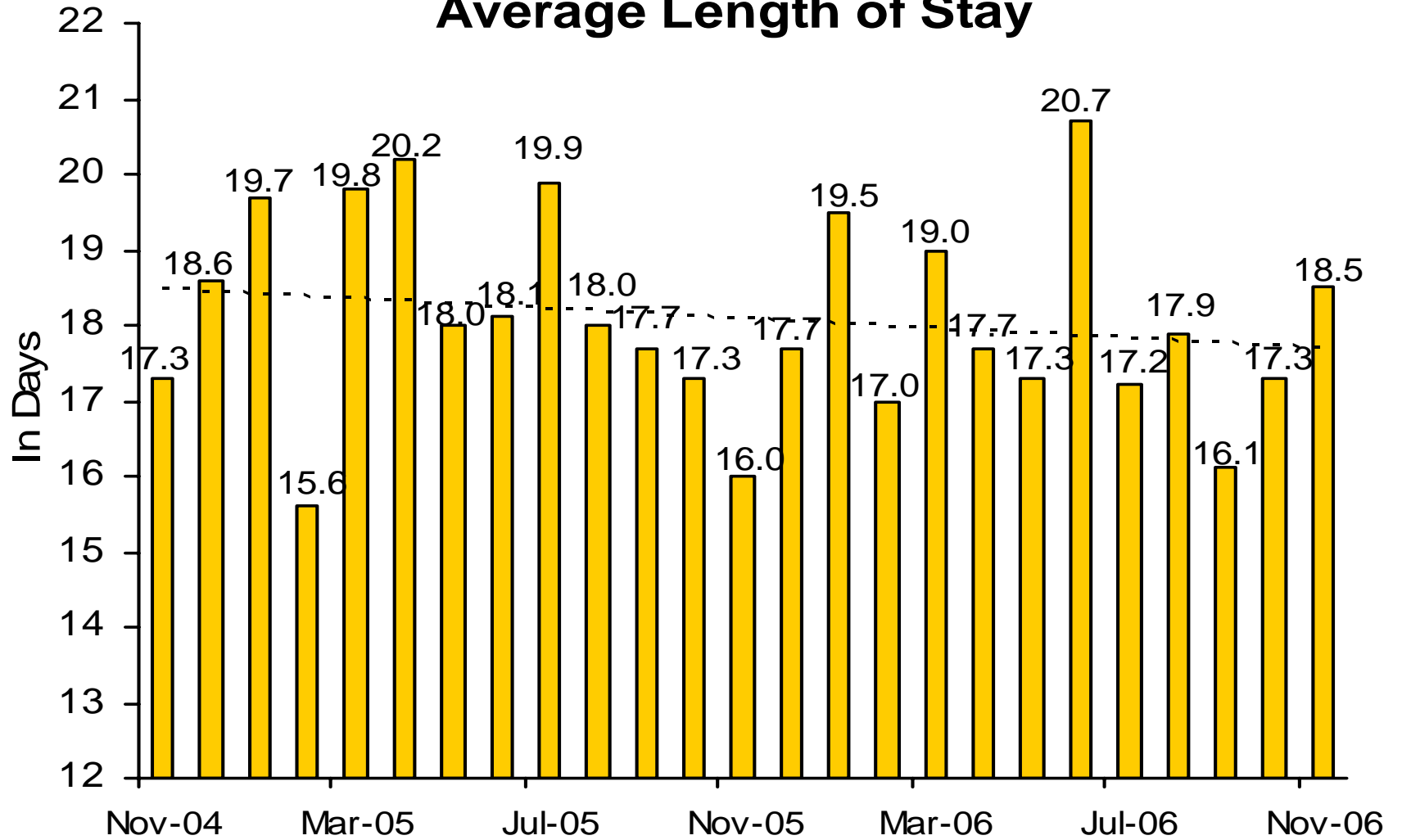
Intensive Supervision Population



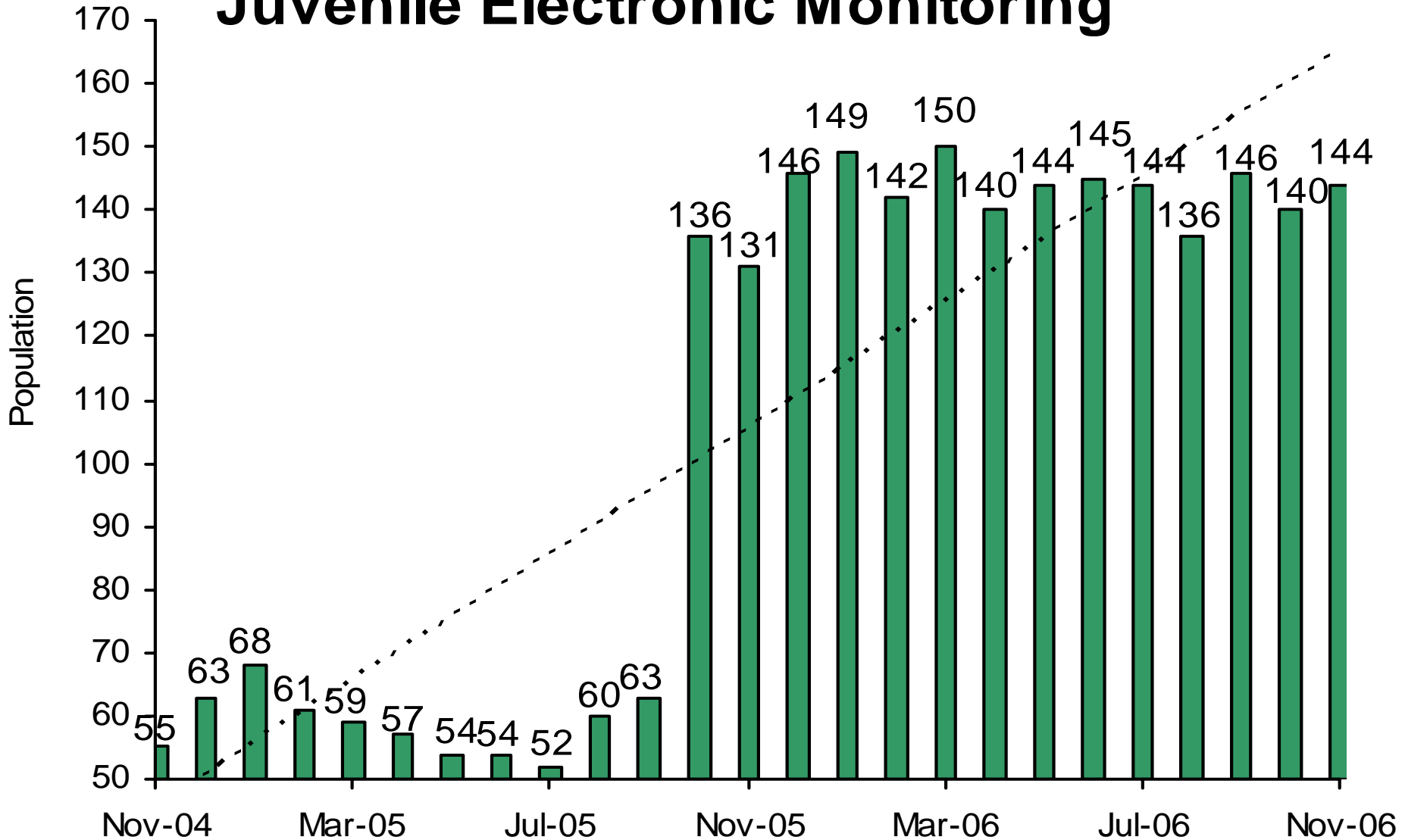
Juvenile Detention Average Daily Population



Juvenile Detention Average Length of Stay

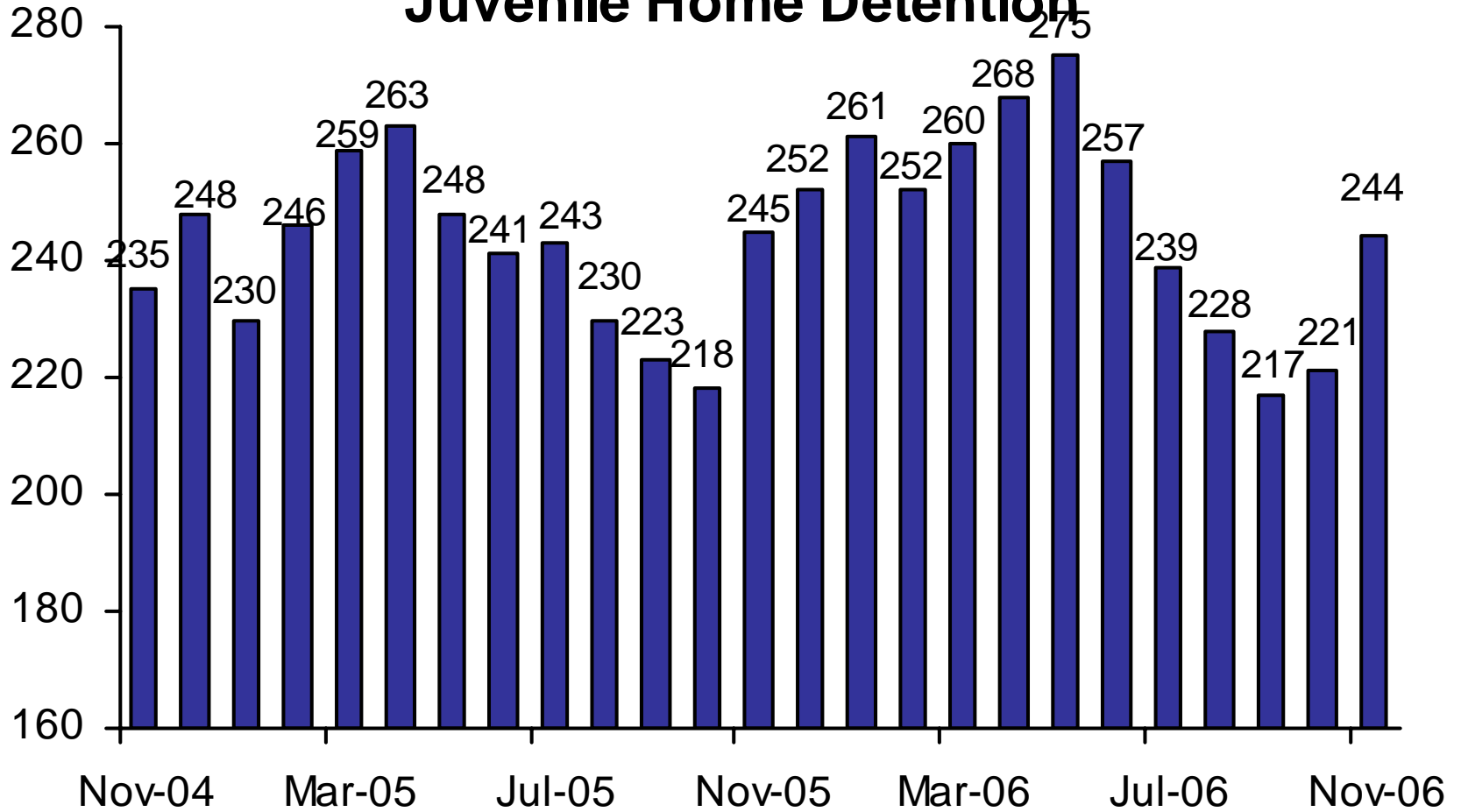


Juvenile Electronic Monitoring



The increase beginning in October 2005 is due to more accurate data collection, including counting Intensive Probation use in addition to Standard use.

Juvenile Home Detention



Juvenile Probation

■ # on standard probation ■ # on intensive probation

