



Maricopa County

Criminal Justice System

Monthly Performance Report for November 2007

| | Annual Averages | | | | Year-to-Date Avgs | | | Current Month | | |
|--|-----------------|---------|---------|---------|-------------------|---------|----------|---------------|--------|----------|
| | FY 2004 | FY 2005 | FY 2006 | FY 2007 | FY 2007 | FY 2008 | % Change | Nov-06 | Nov-07 | % Change |
| Sheriff's Office | | | | | | | | | | |
| Bookings (monthly avg) | 10,176 | 9,975 | 10,459 | 10,654 | 10,575 | 11,087 | 4.8% | 10,258 | 10,227 | -0.3% |
| Releases (monthly avg) | 10,196 | 9,934 | 10,485 | 10,619 | 10,719 | 11,174 | 4.2% | 10,629 | 10,720 | 0.9% |
| Avg Daily Population | 8,657 | 9,054 | 9,733 | 8,941 | 9,040 | 9,635 | 6.6% | 8,808 | 9,564 | 8.6% |
| Avg Length of Stay (in days) | 26 | 27.7 | 28.4 | 25.6 | 26.2 | 26.6 | 1.7% | 25.8 | 28.1 | 8.9% |
| Superior Court | | | | | | | | | | |
| Filings | 3,062 | 2,996 | 3,248 | 3,217 | 2,883 | 3,519 | 22.1% | 2,630 | 3,017 | 14.7% |
| Terminations | 2,612 | 2,758 | 2,984 | 2,958 | 3,123 | 3,215 | 2.9% | 3,136 | 3,178 | 1.3% |
| Clearance Rate | 85.0% | 93.0% | 92.1% | 93.3% | 108.5% | 91.8% | -15.4% | 119.2% | 105.3% | -11.7% |
| Active Pending Inventory | 9,106 | 10,002 | 10,856 | 10,397 | 10,323 | 11,648 | 12.8% | 9,757 | 11,941 | 22.4% |
| Trials Completed | 42 | 51 | 68 | 84 | 89 | 81 | -9.0% | 96 | 68 | -29.2% |
| Trial Rate | 1.4% | 1.7% | 2.1% | 2.6% | 3.1% | 2.3% | -25.8% | 3.7% | 2.3% | -37.8% |
| Justice Courts Filings | | | | | | | | | | |
| DUI | 986 | 1,023 | 971 | 947 | 1,013 | 944 | -6.8% | 753 | 785 | 4.2% |
| All other Criminal Traffic | 1,900 | 2,252 | 3,491 | 6,317 | 4,786 | 5,946 | 24.2% | 5,108 | 5,620 | 10.0% |
| Civil Traffic | 12,353 | 14,290 | 12,824 | 12,677 | 11,853 | 12,576 | 6.1% | 12,222 | 12,781 | 4.6% |
| Misdemeanor | 2,531 | 2,581 | 2,052 | 2,619 | 2,241 | 2,039 | -9.0% | 1,947 | 1,580 | -18.8% |
| Small Claims | 1,796 | 1,578 | 1,144 | 1,112 | 1,173 | 1,277 | 8.8% | 1,181 | 1,225 | 3.7% |
| Forcible Detainers | 6,859 | 6,842 | 7,065 | 5,679 | 6,669 | 7,183 | 7.7% | 5,203 | 6,434 | 23.7% |
| Other Civil | 2,579 | 2,763 | 2,628 | 5,497 | 4,129 | 5,366 | 30.0% | 5,751 | 5,194 | -9.7% |
| Orders of Protection | 523 | 485 | 508 | 459 | 472 | 425 | -10.0% | 431 | 394 | -8.6% |
| Injunctions against Harassment | 463 | 495 | 446 | 423 | 465 | 423 | -9.1% | 469 | 385 | -17.9% |
| Adult Probation | | | | | | | | | | |
| Pretrial General Supervision | 990 | 978 | 775 | 748 | 859 | 802 | -6.6% | 743 | 880 | 18.4% |
| Pretrial Intensive Supervision | 657 | 816 | 1,077 | 1,085 | 1,175 | 1,212 | 3.1% | 1,130 | 1,326 | 17.3% |
| Pretrial Electronic Monitoring | 153 | 164 | 190 | 242 | 238 | 265 | 11.3% | 239 | 253 | 5.9% |
| Standard Probation Supervision | 25,055 | 26,091 | 27,896 | 27,896 | 29,822 | 30,325 | 1.7% | 30,214 | 30,694 | 1.6% |
| Intensive Probation Supervision | 1,078 | 1,456 | 1,321 | 1,321 | 1,175 | 1,212 | 3.1% | 1,293 | 1,104 | -14.6% |
| Juvenile Detention and Probation* | | | | | | | | | | |
| | | | | | | | | | | |
| | | | | | | | | | | |
| | | | | | | | | | | |
| | | | | | | | | | | |
| | | | | | | | | | | |
| | | | | | | | | | | |
| | | | | | | | | | | |
| | | | | | | | | | | |

*Due to conversion to iCIS database, November data is not available.



Maricopa County

Criminal Justice System

CRIMINAL JUSTICE SYSTEM NEWS – November 2007

Adult Incarceration

Bookings decreased from October's 11,279 to November's 10,227. The **Average Daily Population decreased** 9,739 to 9,564. The **pretrial population slightly decreased** in November (6,540) compared to October (6,576). The **sentenced and agency hold populations slightly decreased:** sentenced from 2,761 to 2,621 and agency holds from 358 to 354. **Overall ALOS increased** from 26.8 to 28.1 days; which is the highest since December 2005. **The ALOS for sentenced decreased** from 28.6 to 28.4 days, while **the ALOS for agency holds increased** from 57.1 to 59.7 days. **Pretrial ALOS increased** from 7.4 to 8.8 days days.

Superior Court Filings & Case Processing

Criminal filings decreased from October (3,676) to November (3,017). **Terminations decreased** from 3,390 to 3,178. The resulting clearance rate was 105.3%. **The active pending case inventory increased,** as it has every month since January, from 11,916 to 11,941 (most ever). **Filings into RCC decreased** in November (1,957) compared to October (2,259), while **filings into EDC also decreased** from 1,189 in October to 882 in November. **The number of trials decreased** from 88 in October to 68 in November. **The trial rate stayed almost the same,** decreasing from 2.4% to 2.3%.

Justice Court Filings

Forcible detainer filings decreased from October (7,303) to November (6,434). Overall, November total filings were 34,298 compared to October's 37,252.

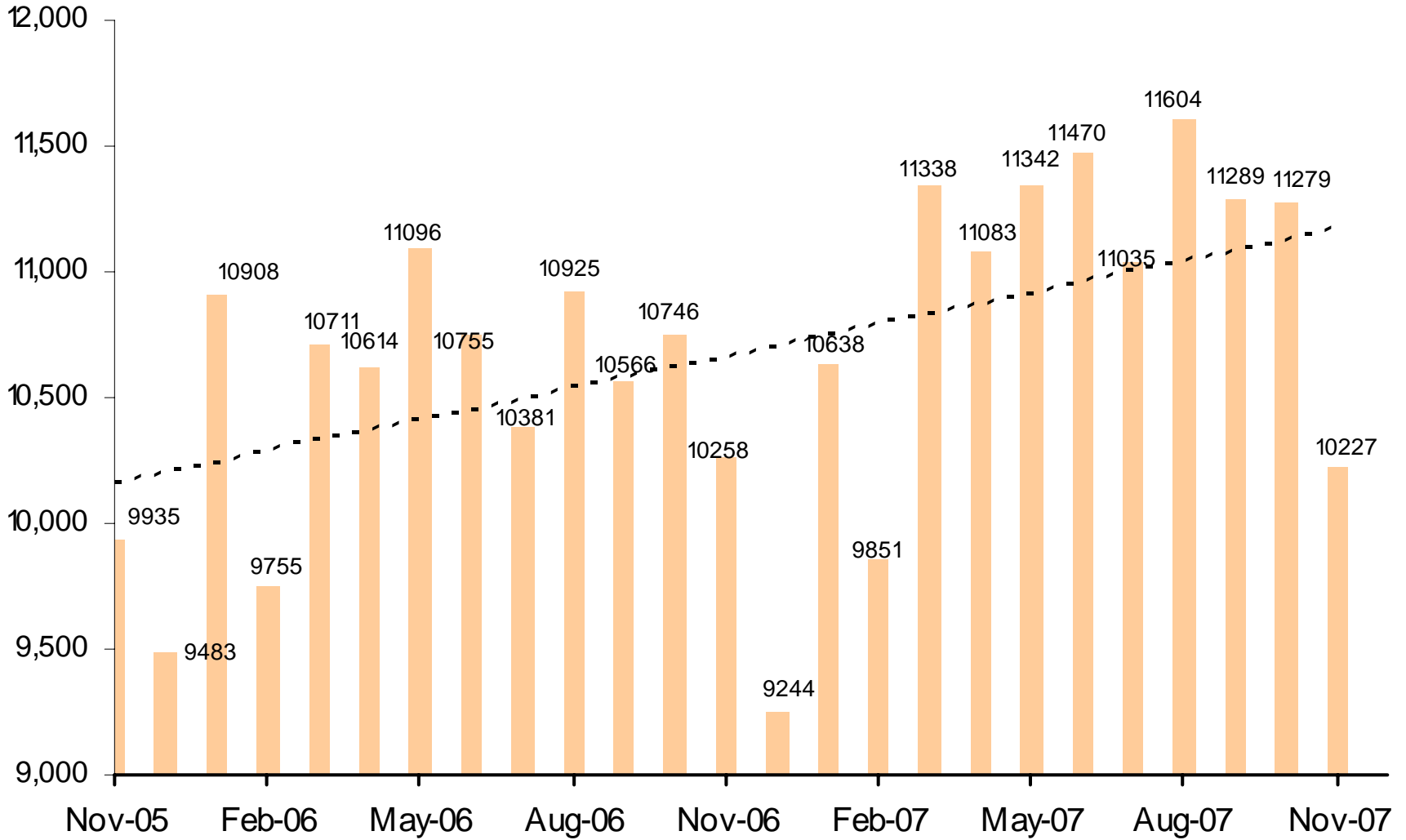
Adult Probation

Pretrial general supervision increased; October (868) November (880); while **pretrial intensive supervision also increased,** from 1,308 in October to 1,326 in November. **Electronic monitoring increased** from 249 to 253. **Levels of standard probation supervision decreased** from 30,889 to 30,694, while **levels of intensive probation supervision also decreased** from 1,081 in October to 1,104 in November.

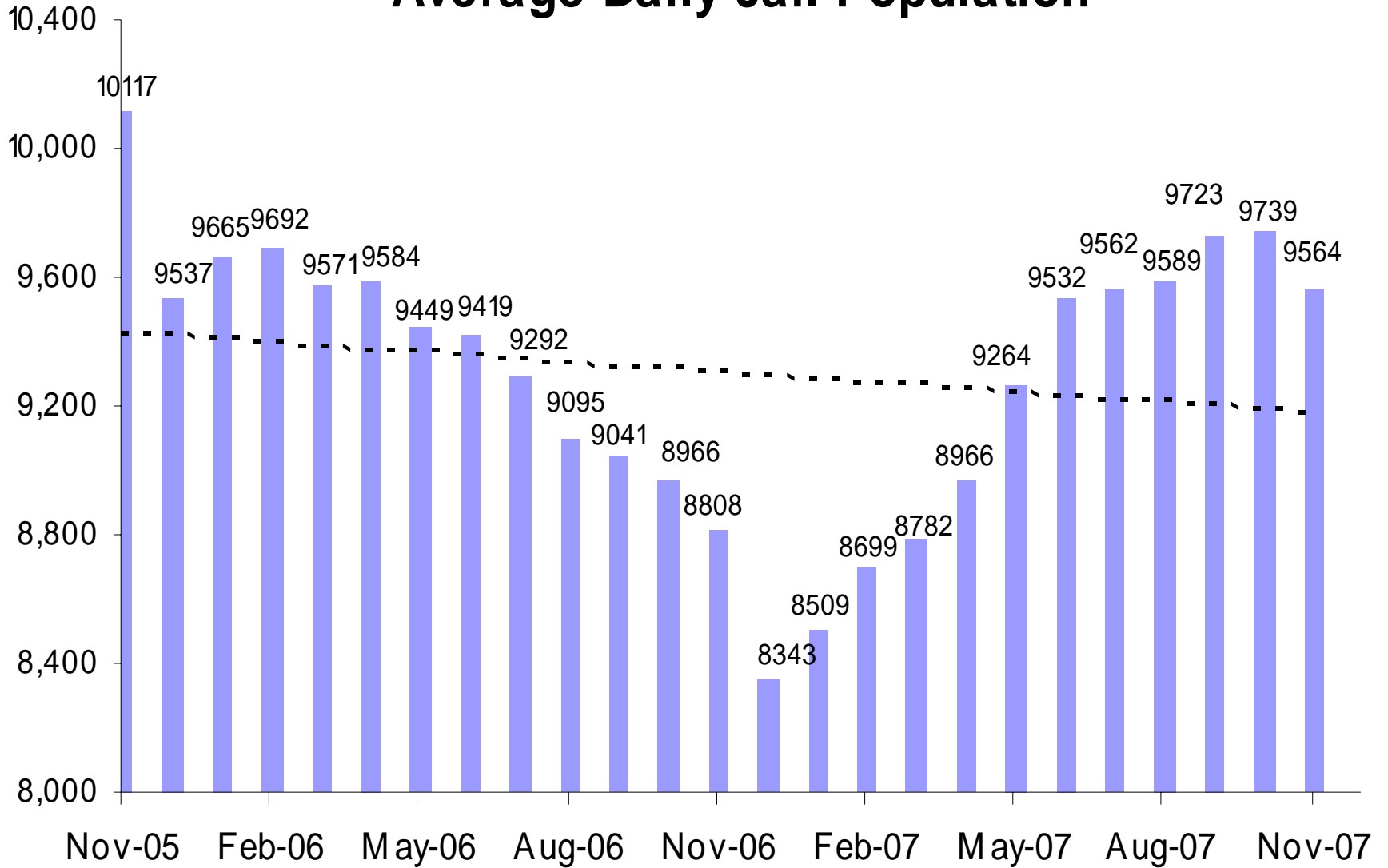
Juvenile Detention and Probation

Please note – due to conversion to iCIS database, November data is not available.

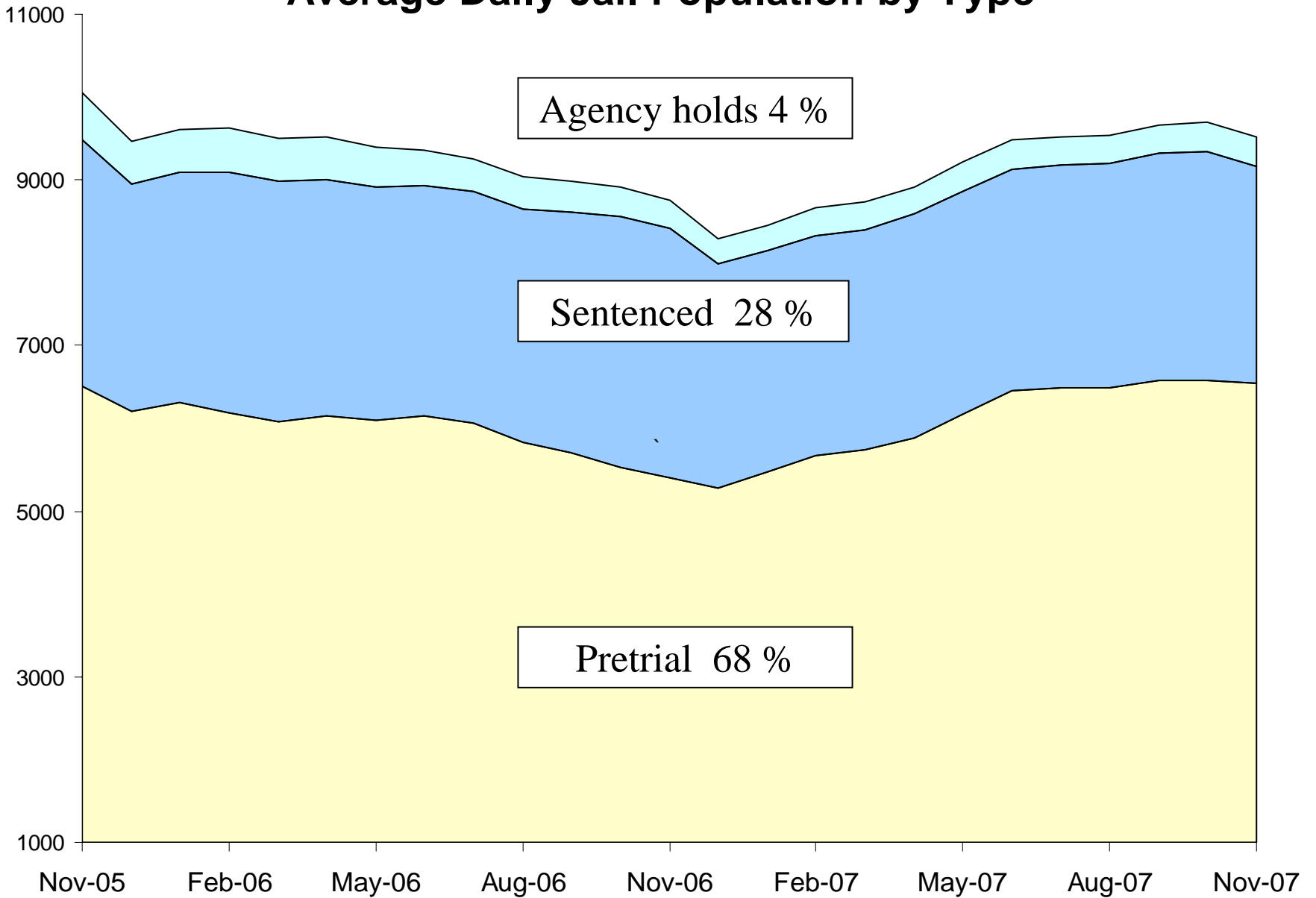
Jail Bookings



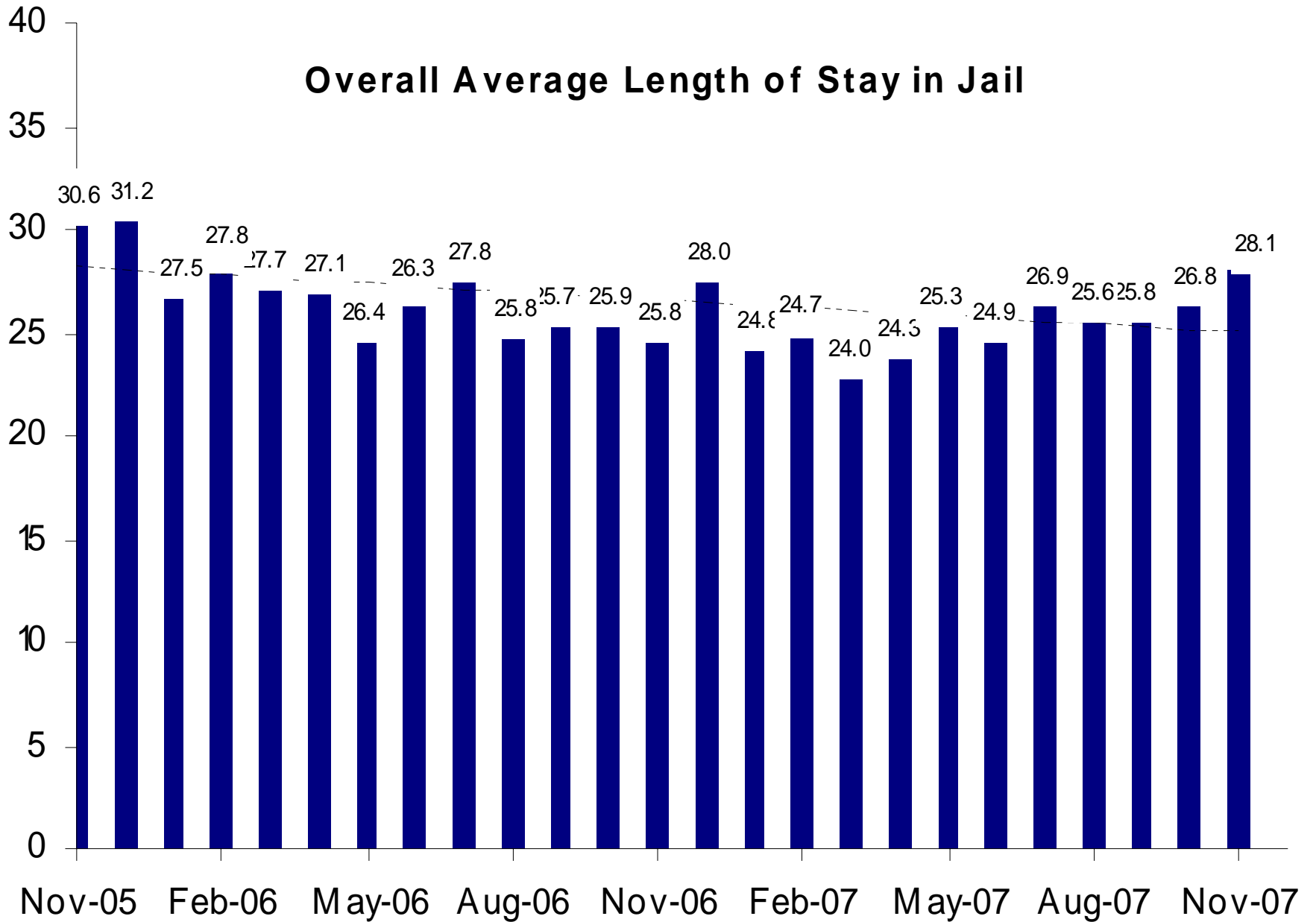
Average Daily Jail Population



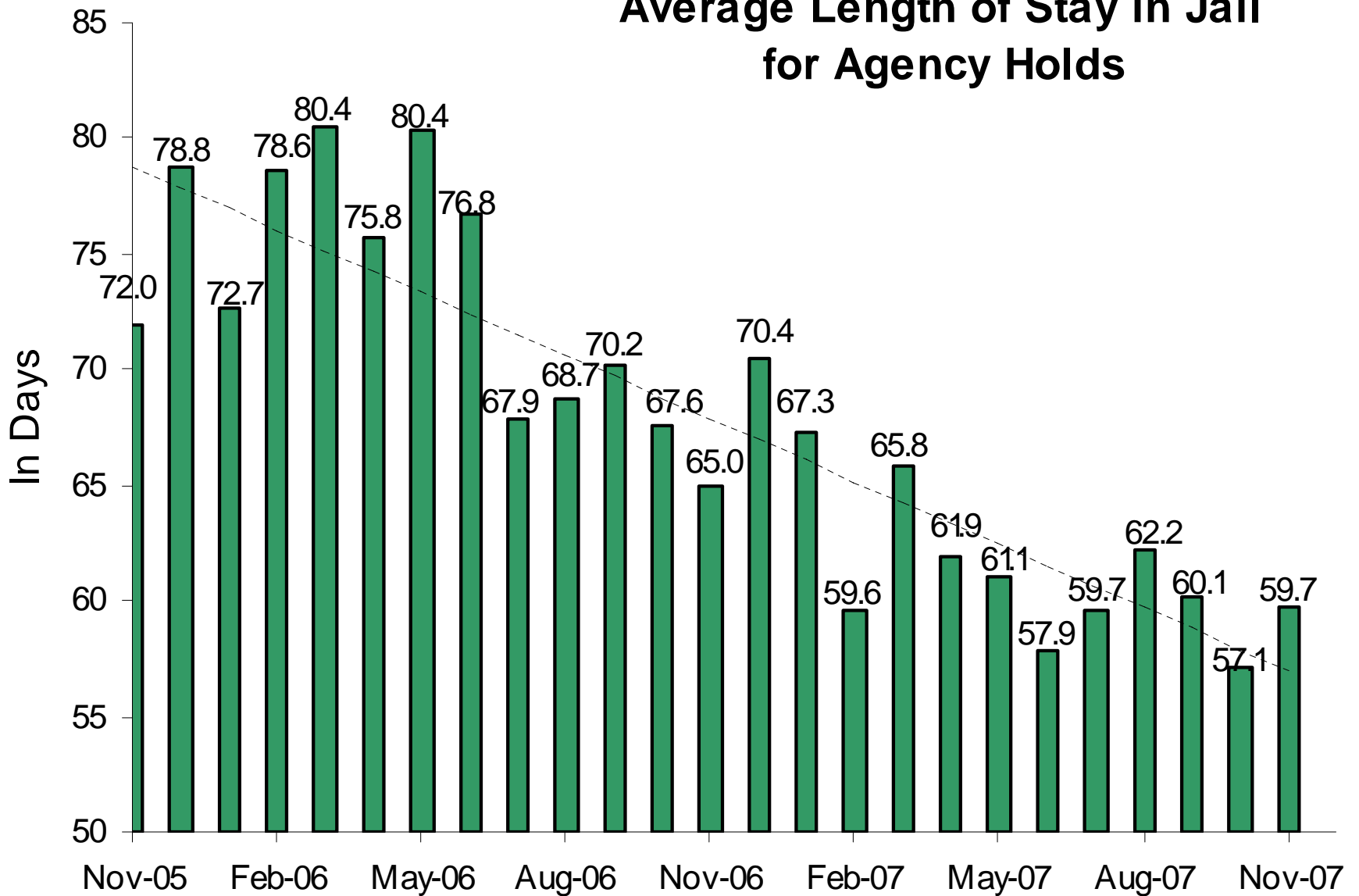
Average Daily Jail Population by Type



Overall Average Length of Stay in Jail

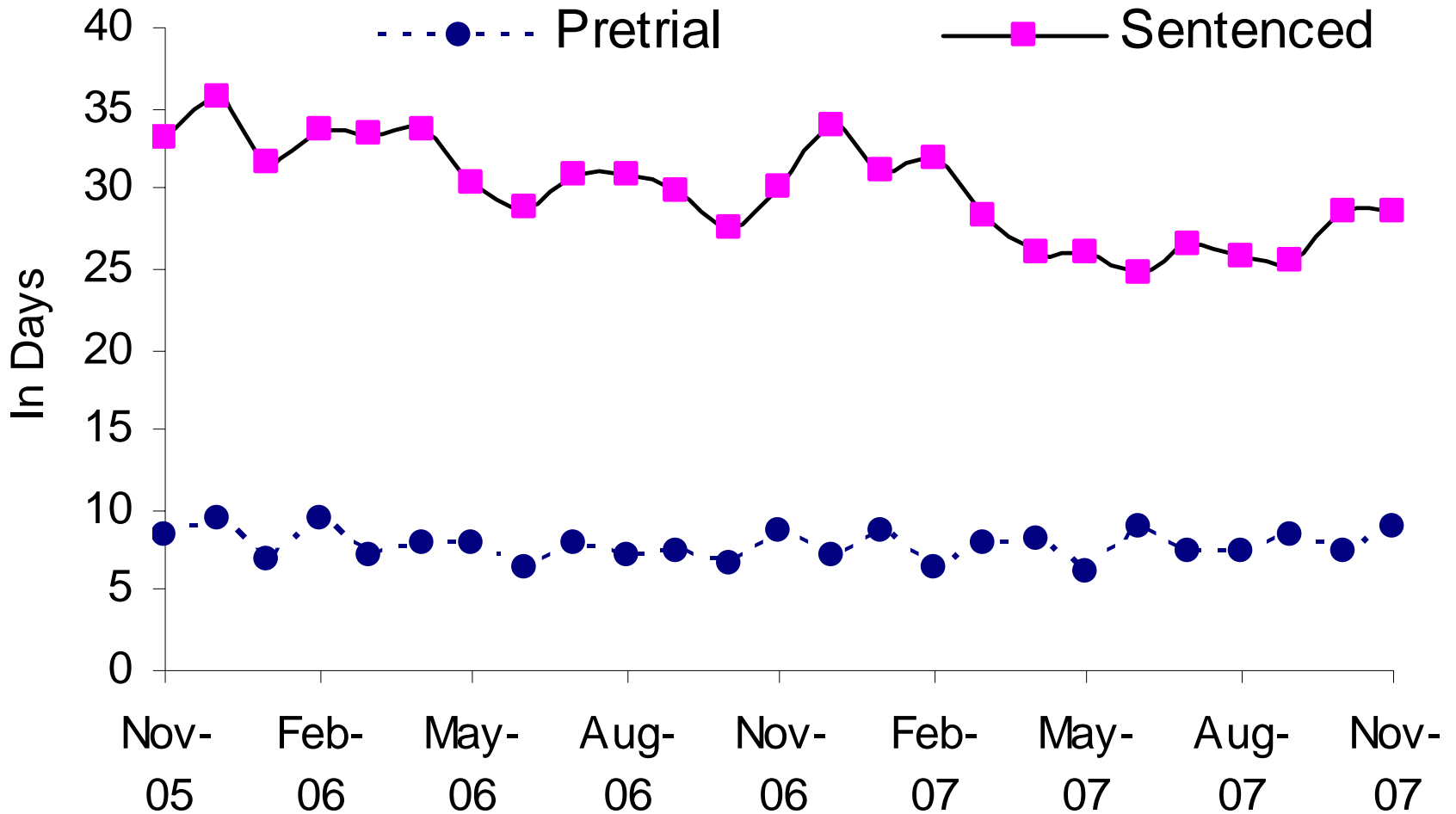


Average Length of Stay in Jail for Agency Holds



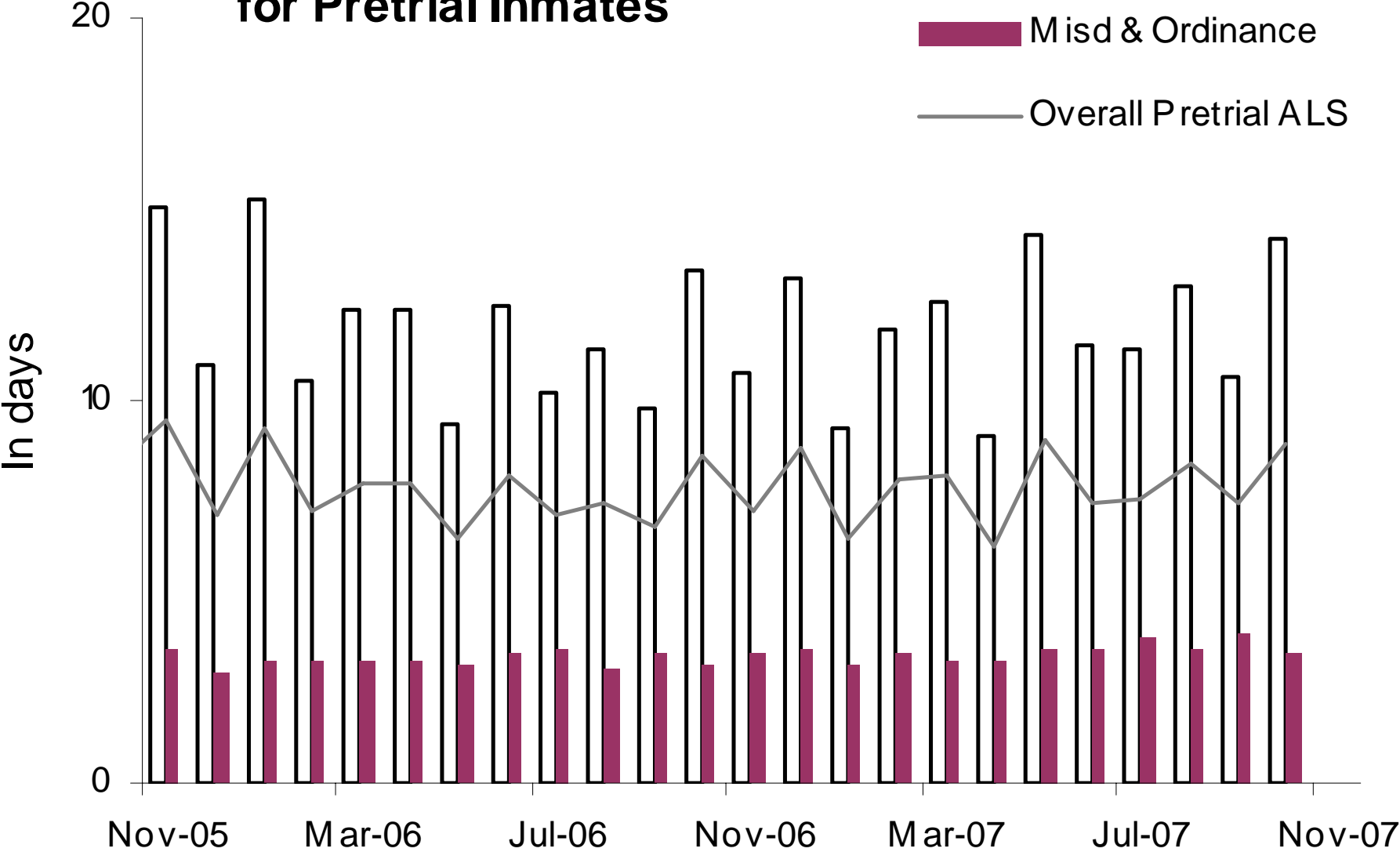
54% Dept of Corrections, 26% Federal agencies, 20% other

Average Length of Stay in Jail Pretrial vs Sentenced Population

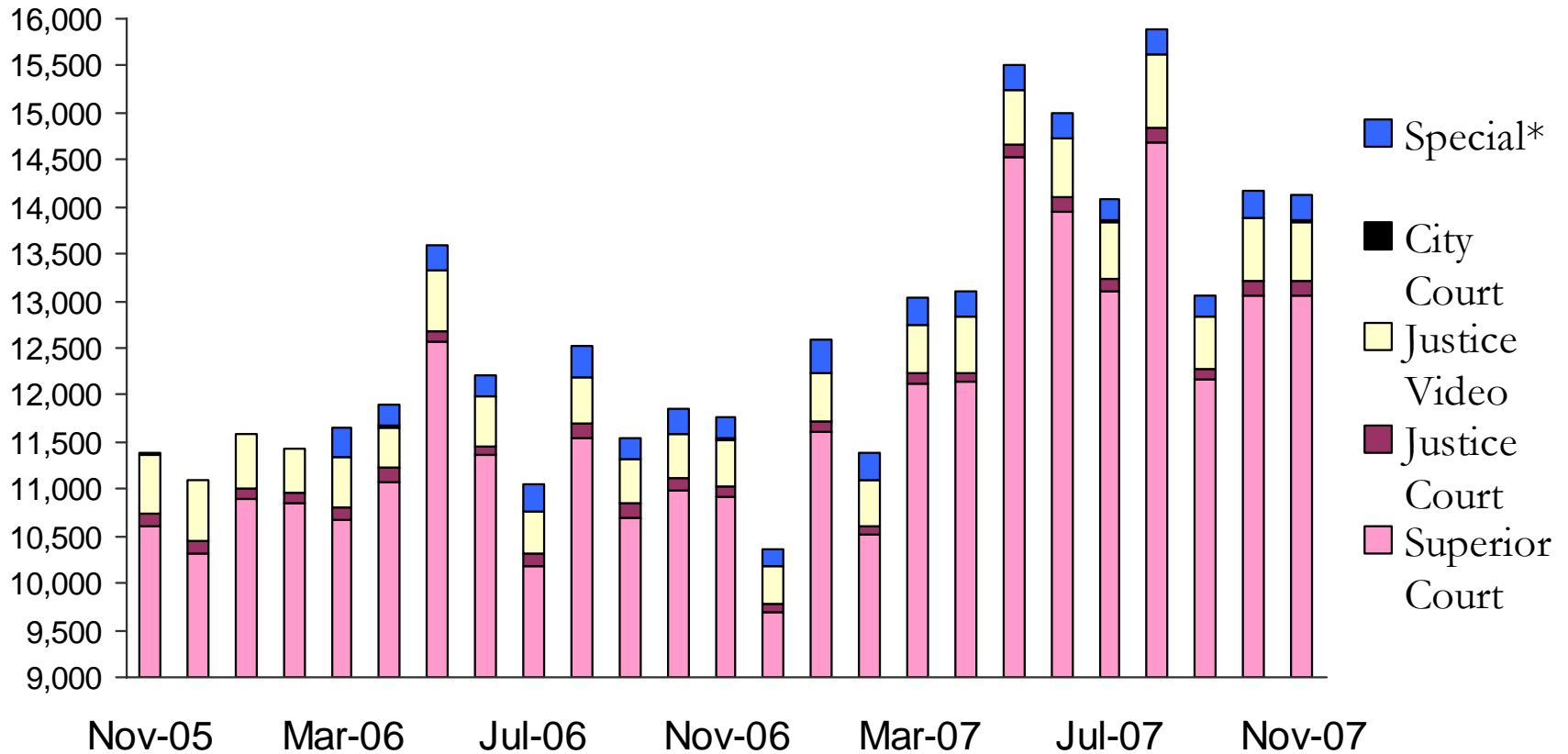


Average Length of Stay in Jail for Pretrial Inmates

Felony
Misd & Ordinance
Overall Pretrial ALS



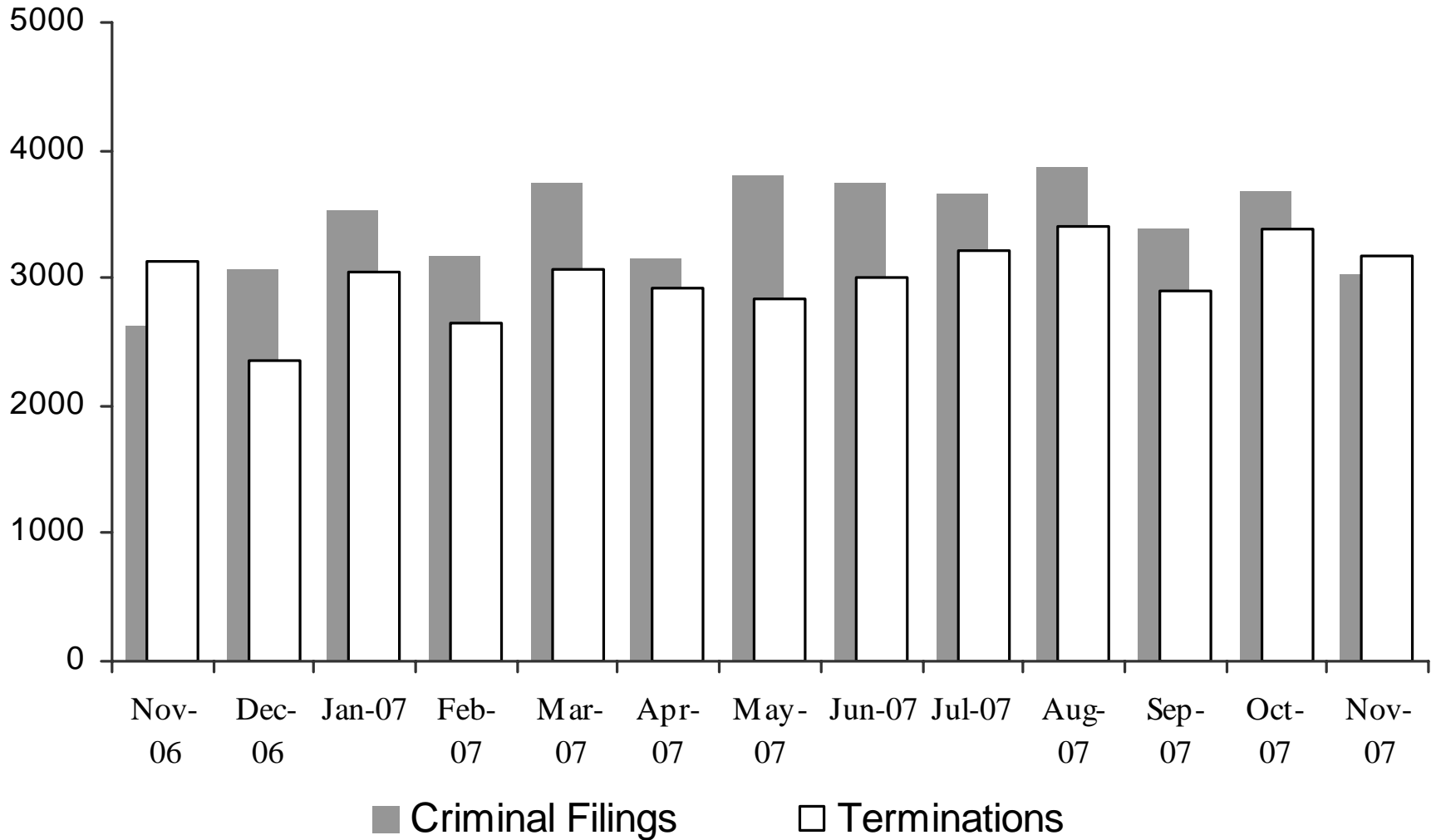
Sheriff's Office Transports for Inmate Court Appearances



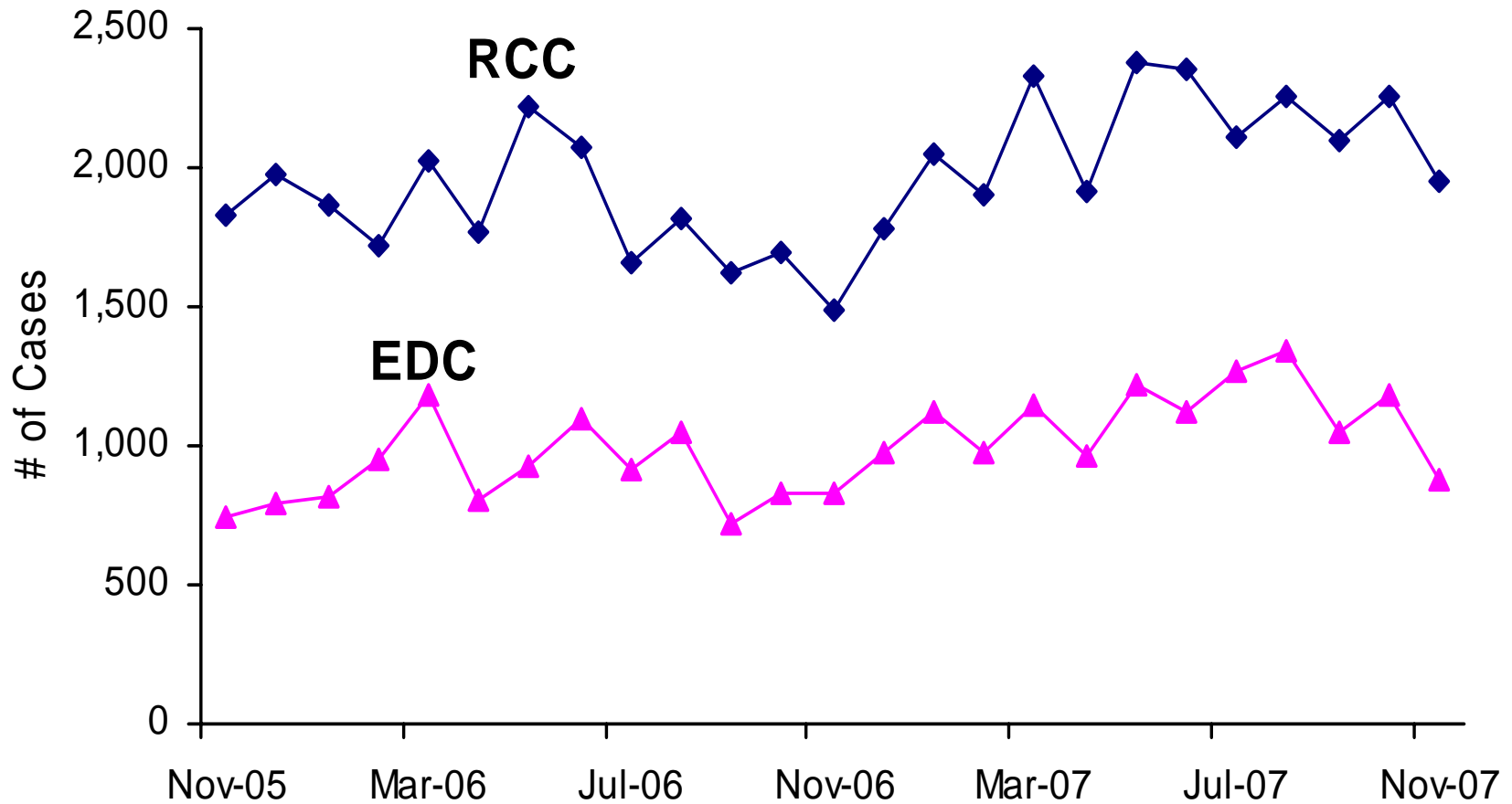
*"Special" cases added in March 2006 include Downtown Remands, SEJD Remands, and SEJD Unscheduled.

Superior Court Filings and Terminations

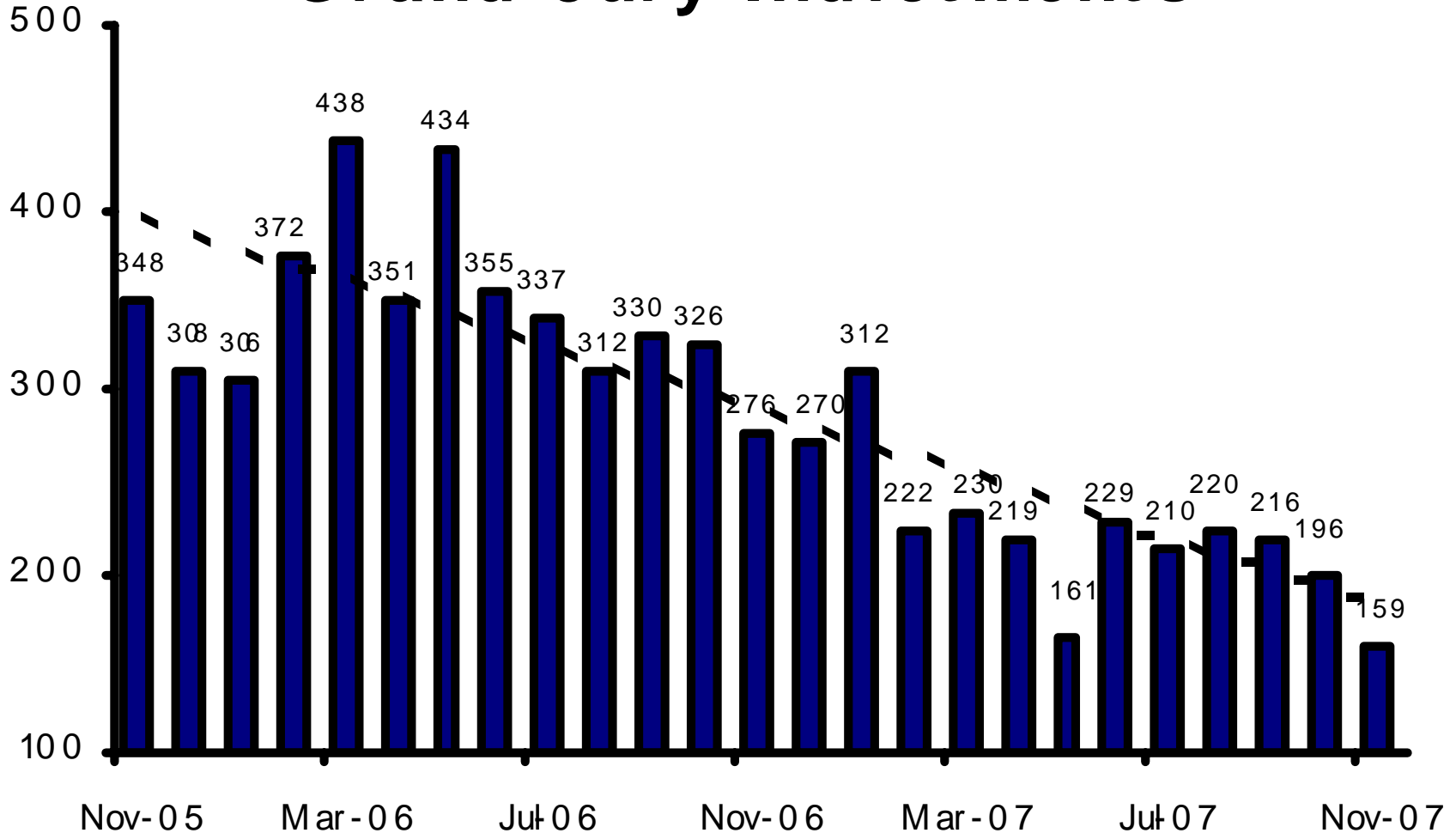
Direct Filing began in May 2002



Direct Complaints into Superior Court

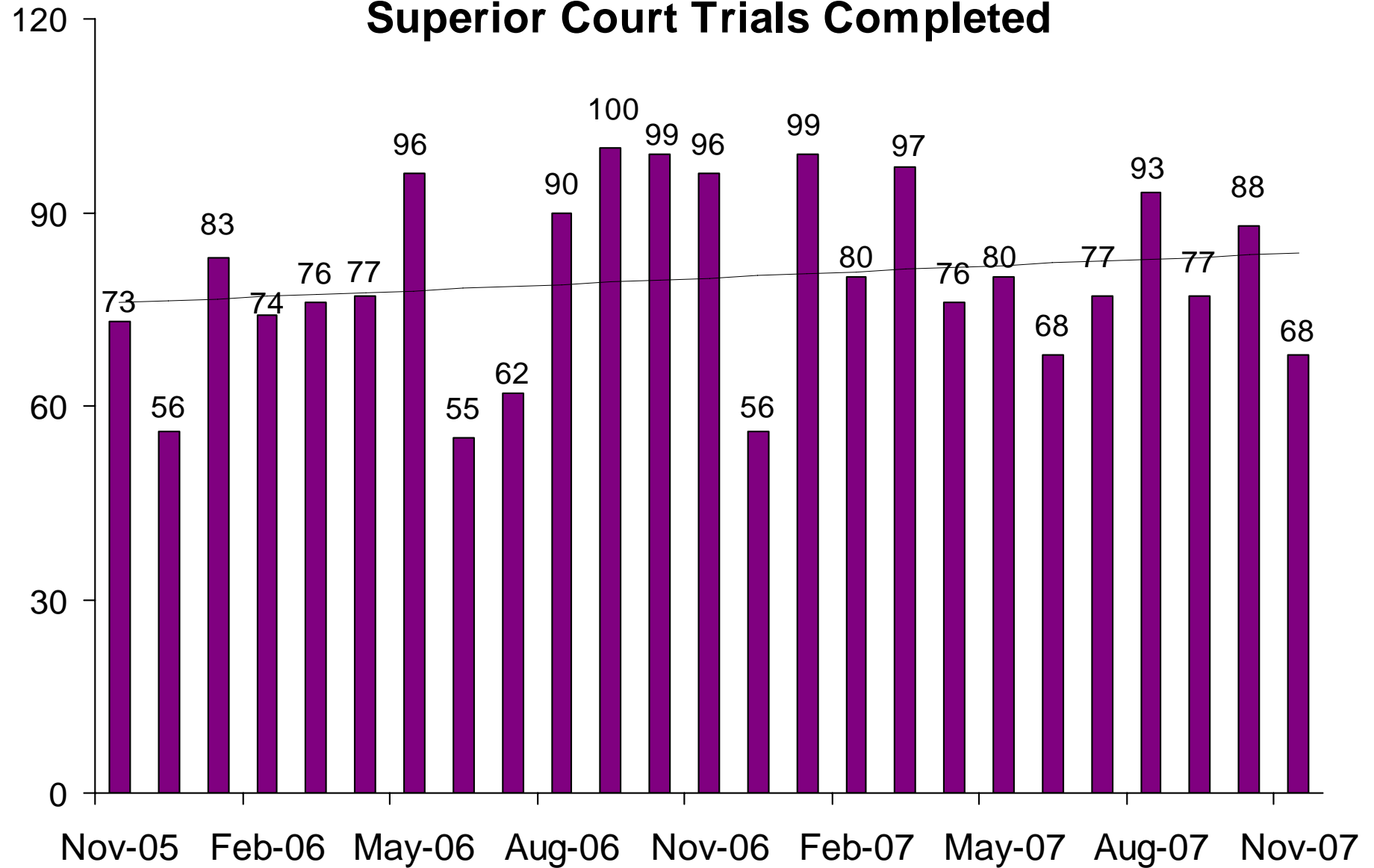


Grand Jury Indictments

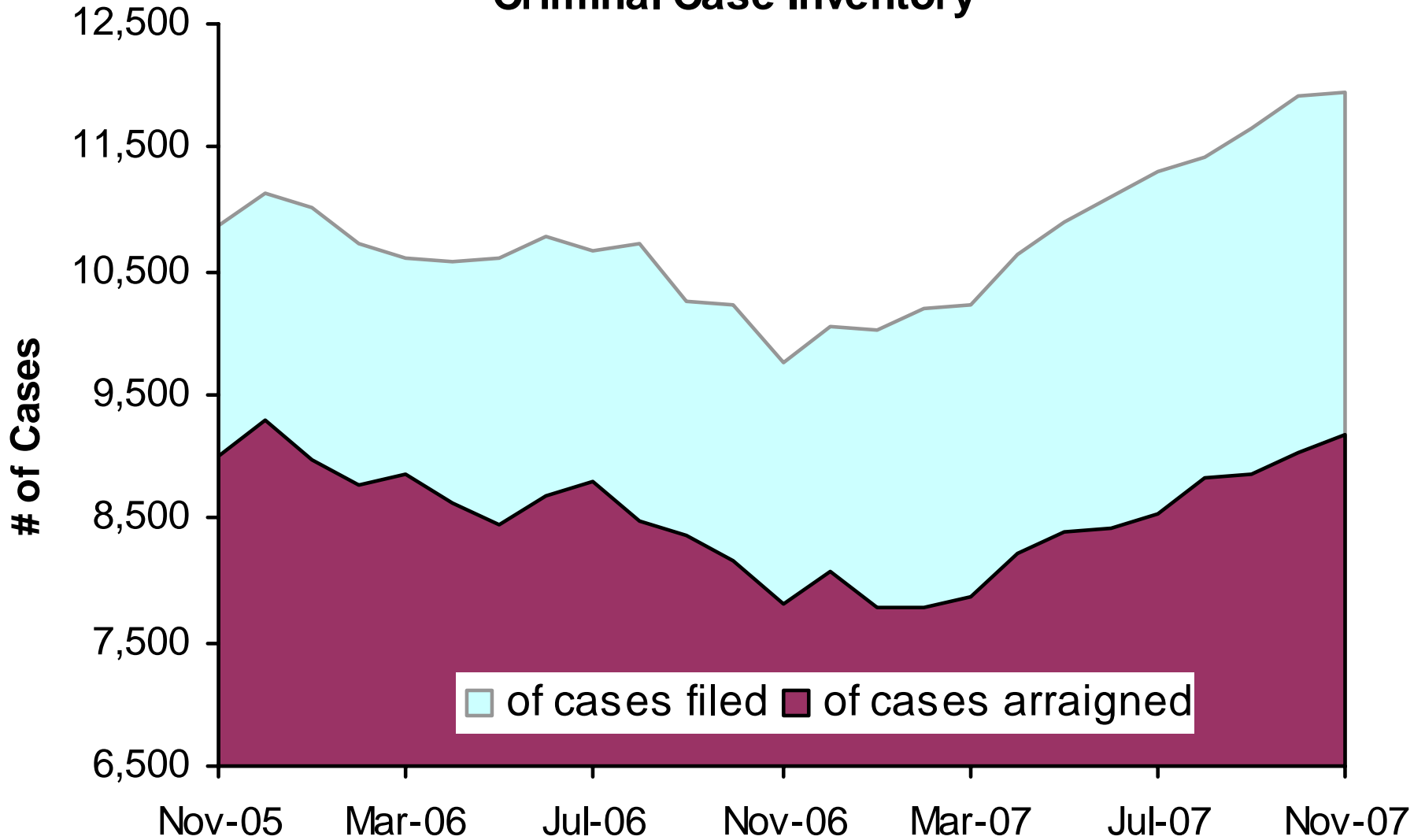


These numbers do not include notices of supervening indictments, non-EDC direct complaints, and juvenile direct complaints.

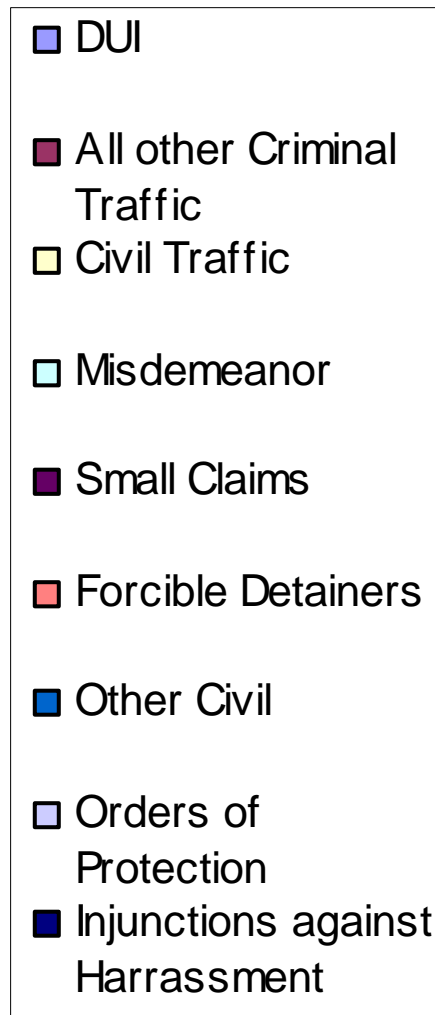
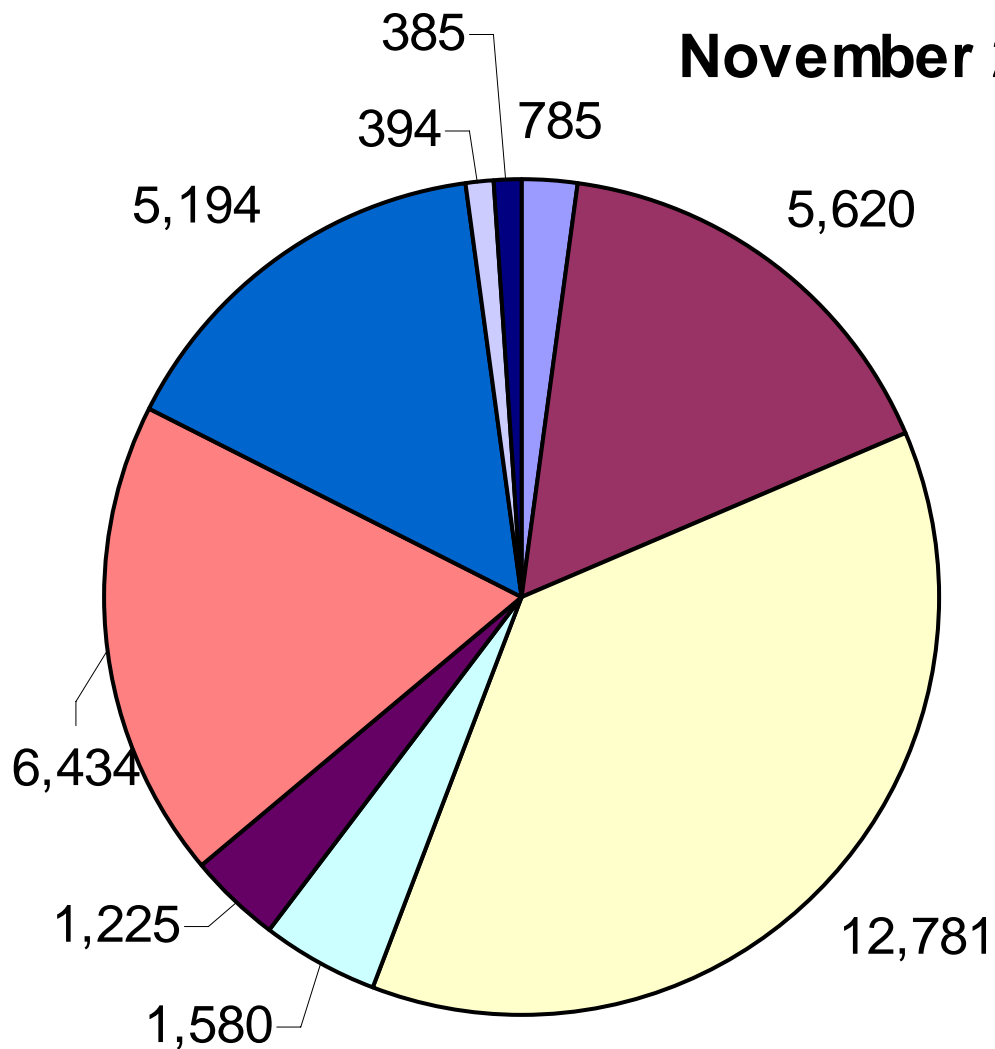
Superior Court Trials Completed



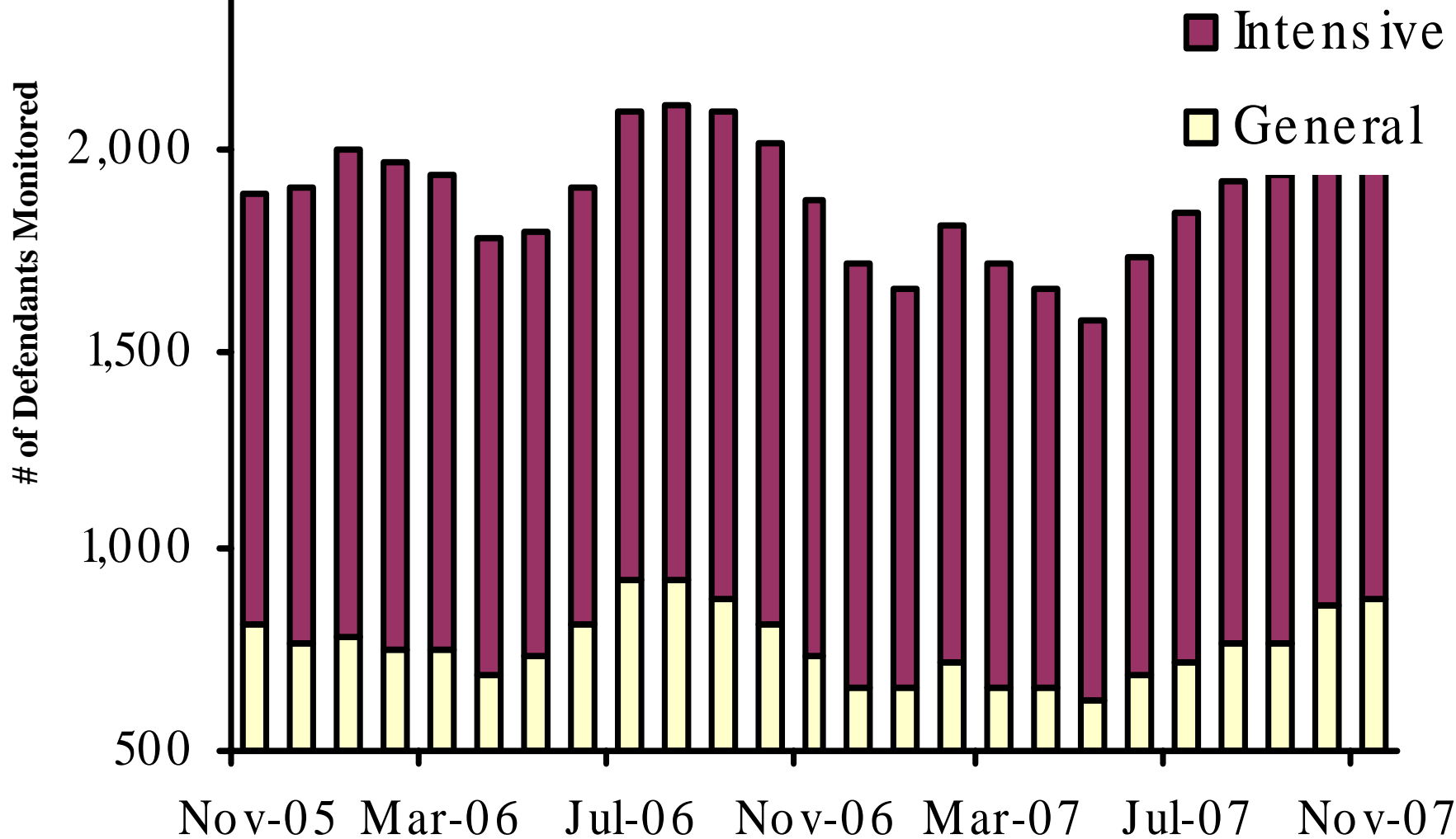
Active Pending Criminal Case Inventory



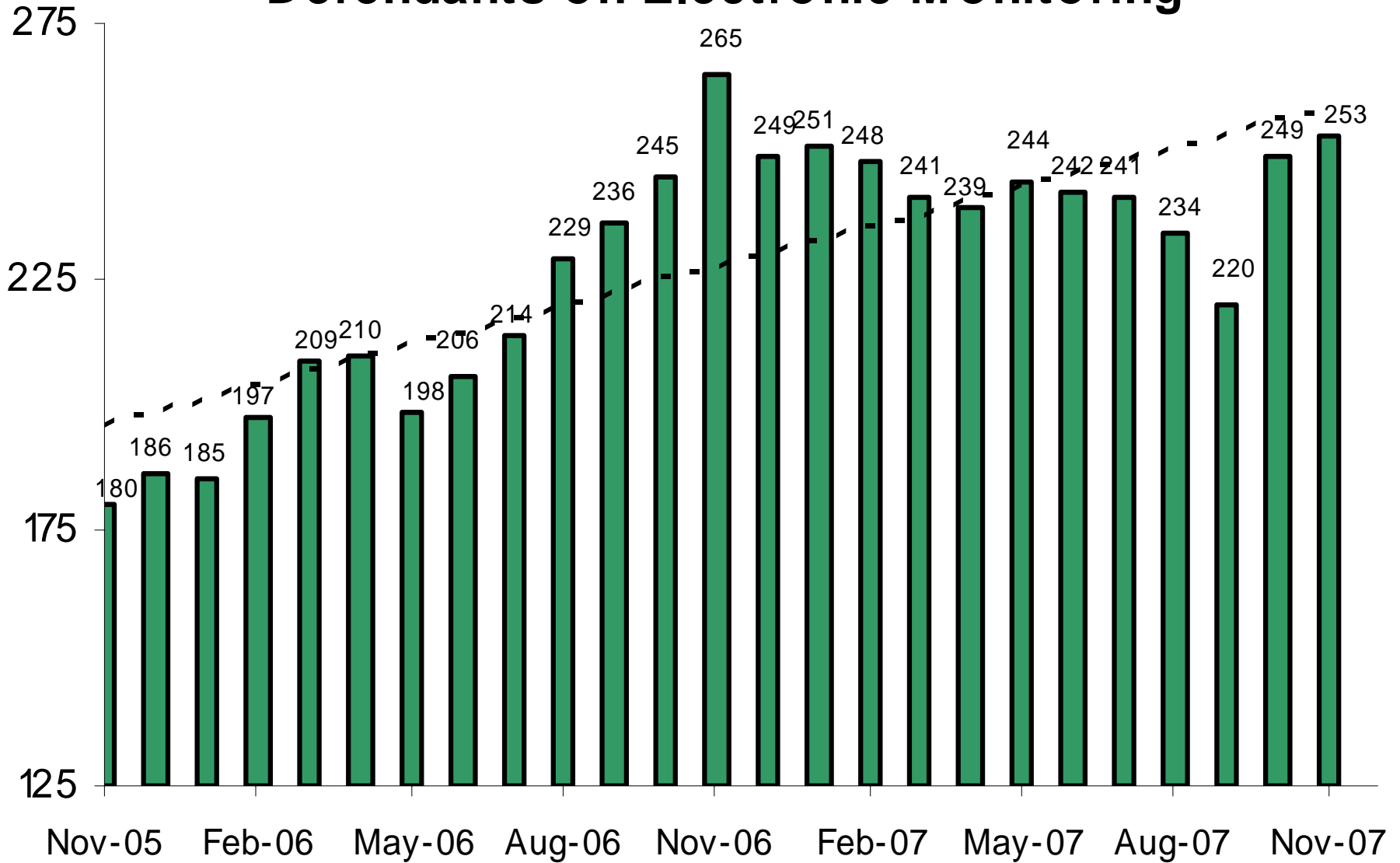
Justice Court Filings November 2007



Pretrial Supervision Defendant Monitoring Unit

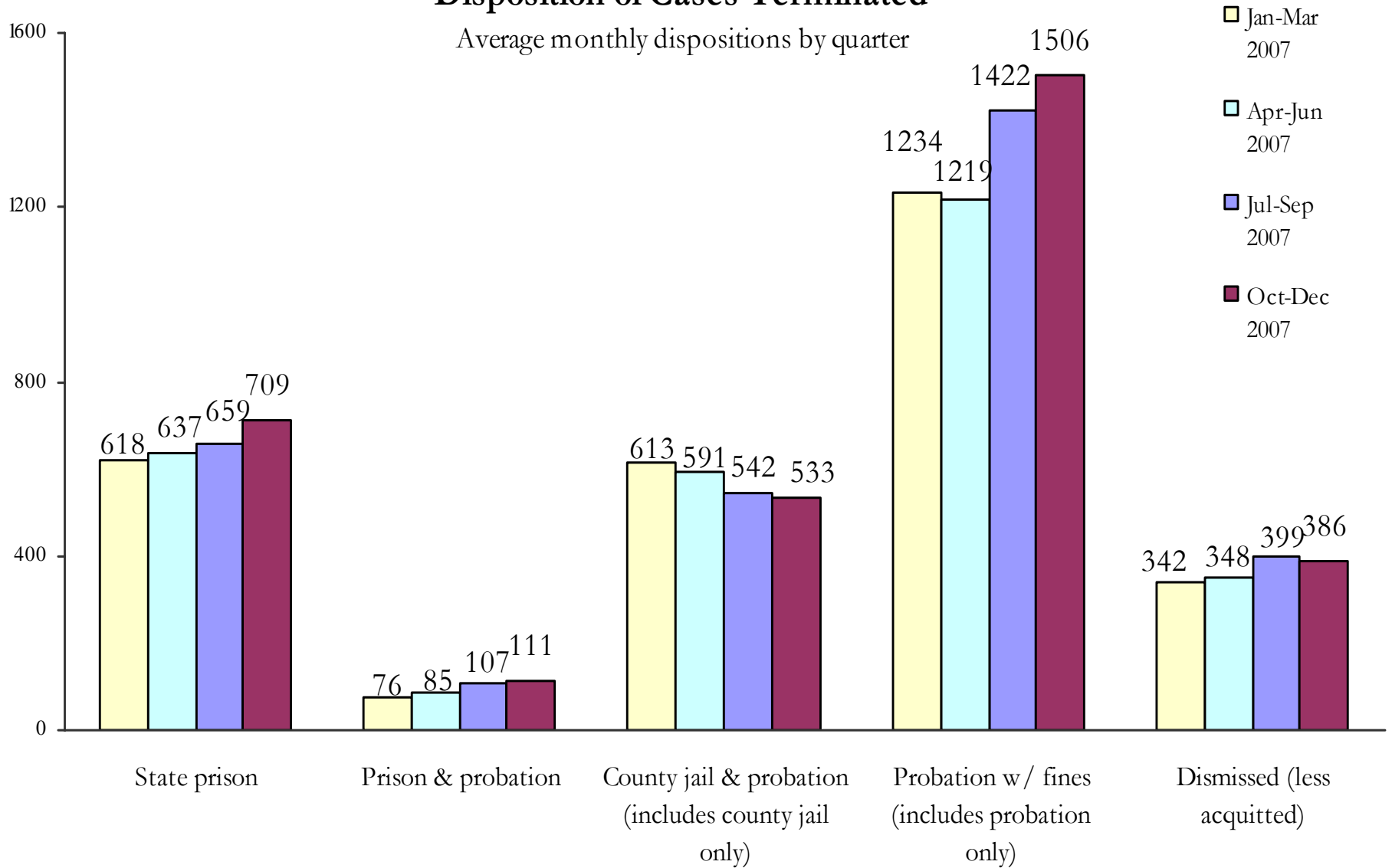


Pretrial Supervision Defendants on Electronic Monitoring

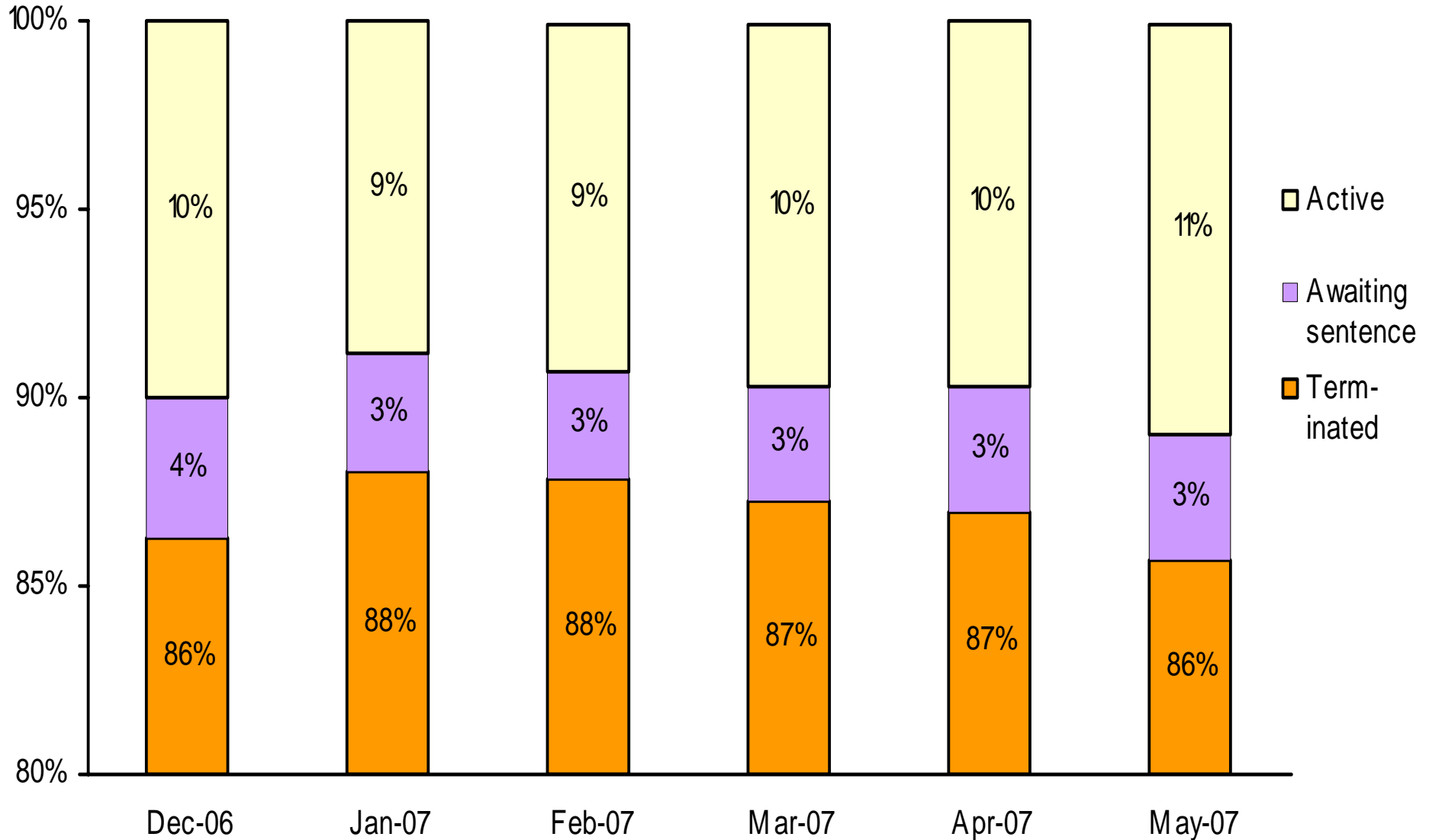


Disposition of Cases Terminated

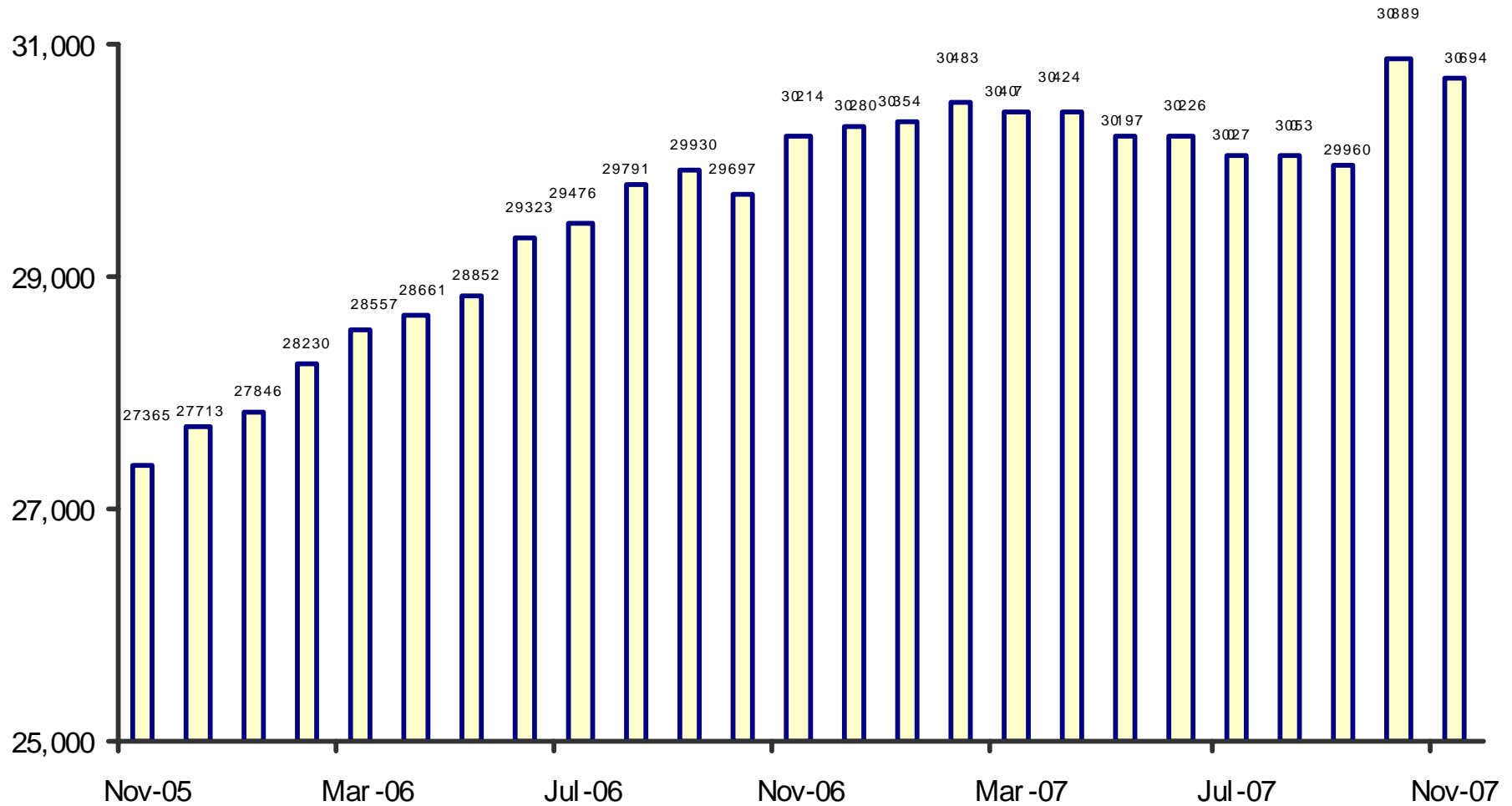
Average monthly dispositions by quarter



Status of Cases After 180 Days

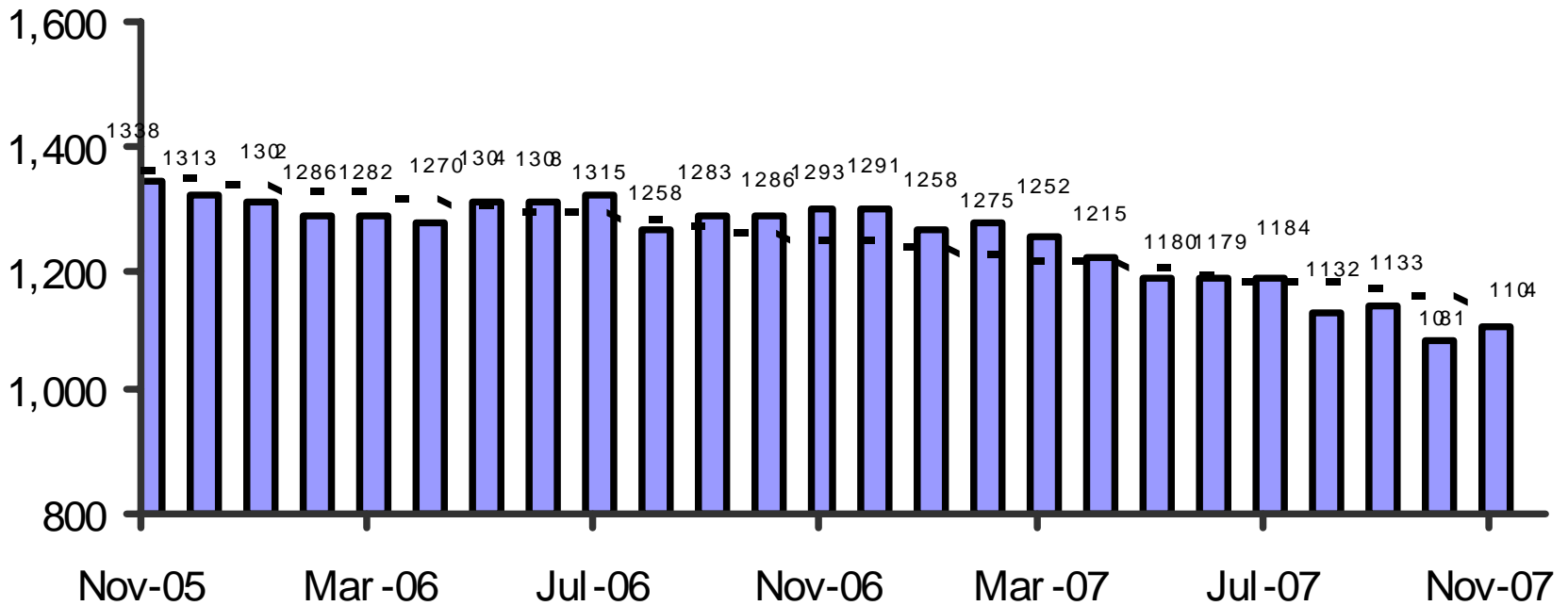


Adult Probation Standard Supervision Population

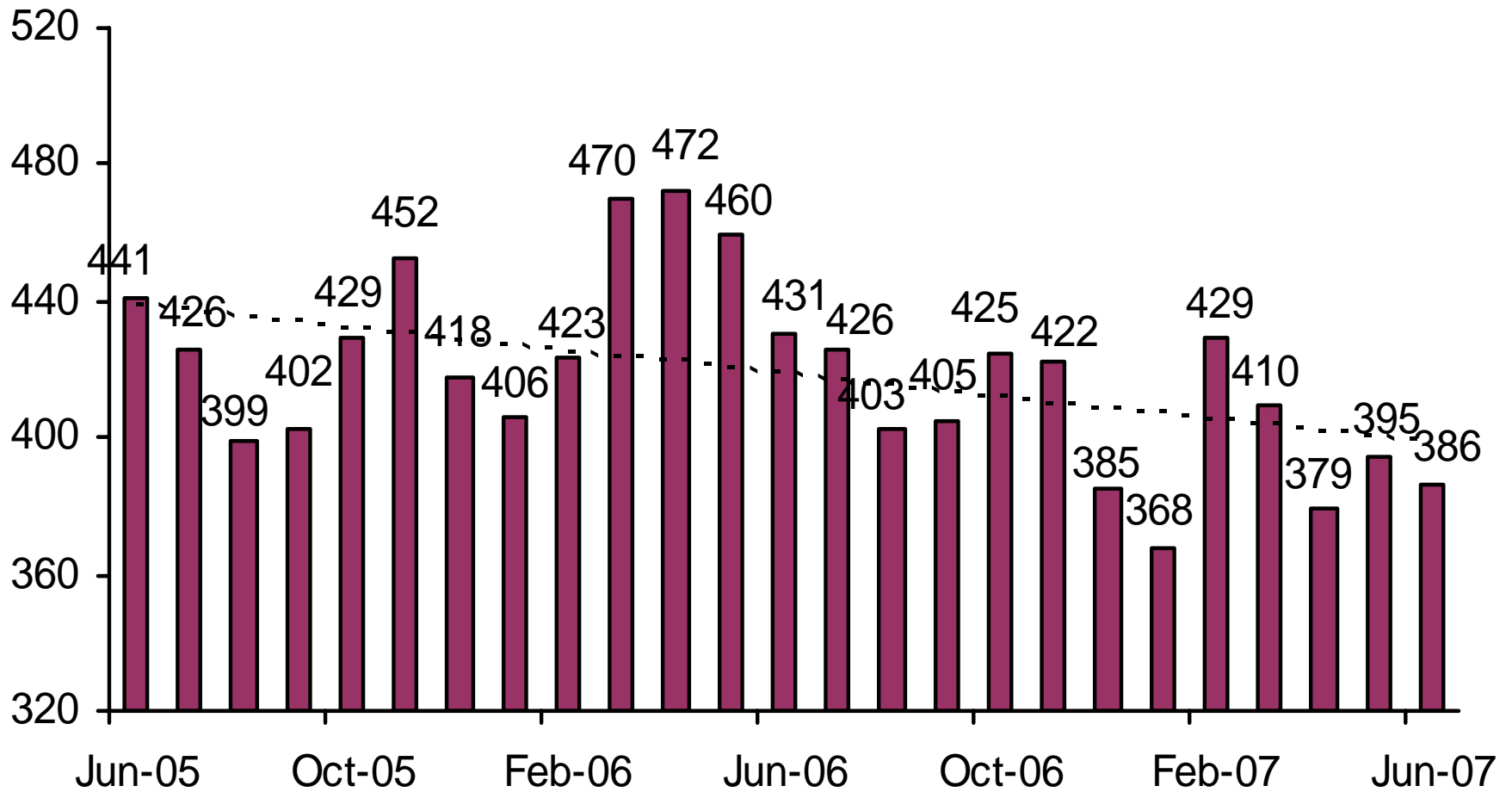


This population includes Interstate Compact and Report and Review caseloads, as reported to the Board of Supervisors and JLBC.

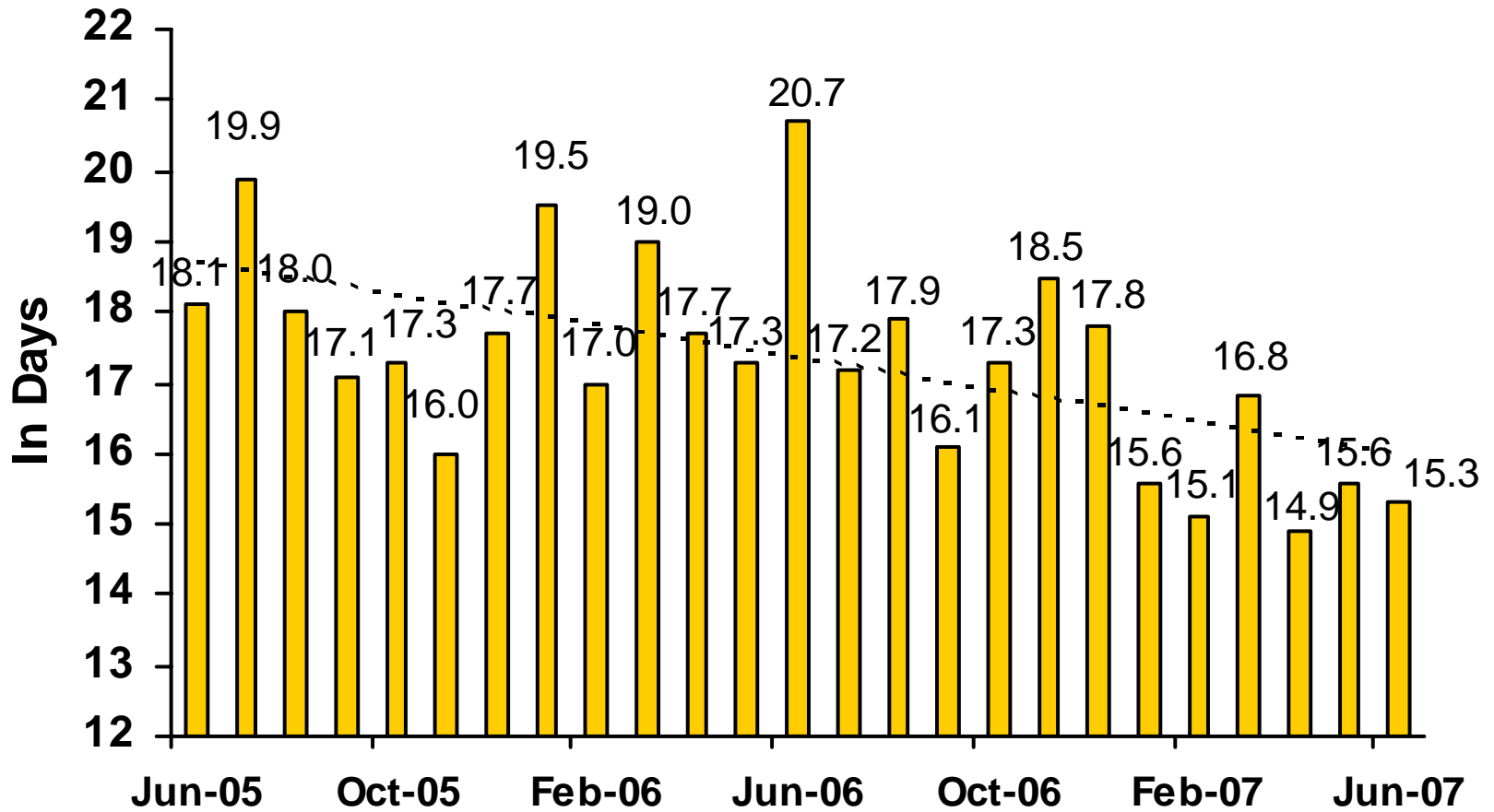
Adult Probation Intensive Supervision Population



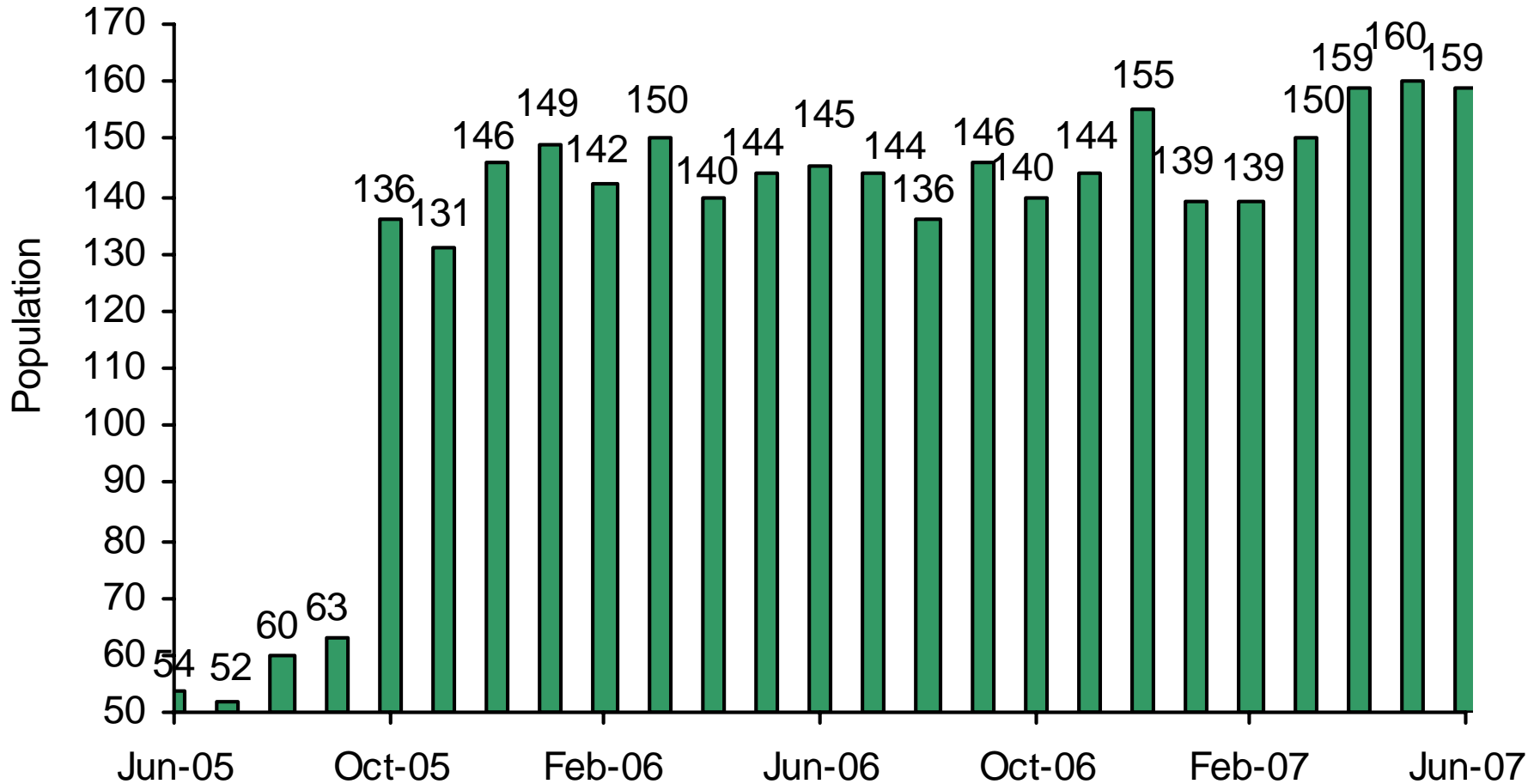
Juvenile Detention Average Daily Population



Juvenile Detention Average Length of Stay

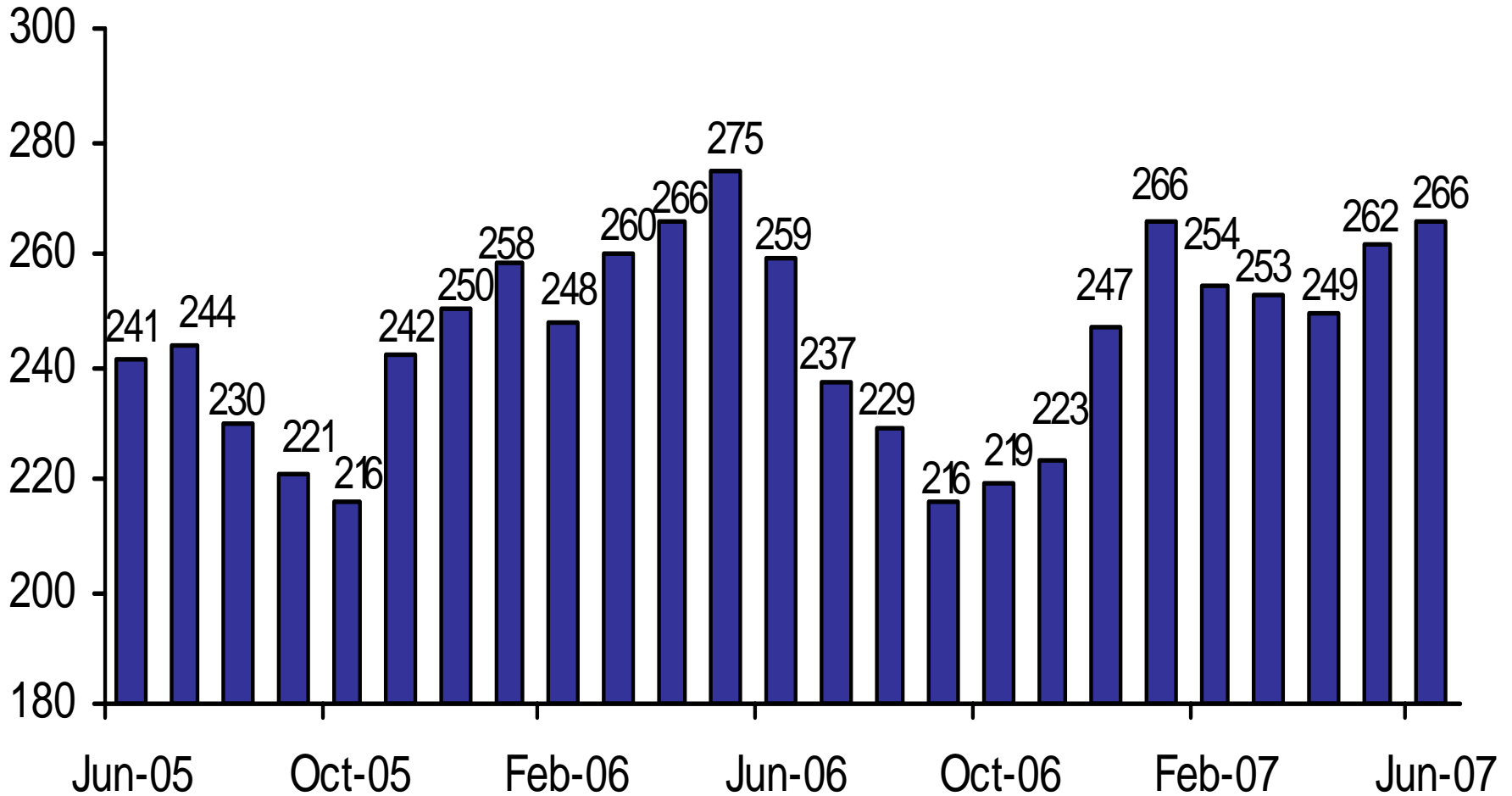


Juvenile Electronic Monitoring



The increase beginning in October 2005 is due to more accurate data collection, including counting Intensive Probation use in addition to Standard use.

Juvenile Home Detention



Juvenile Probation

■ # on standard probation ■ # on intensive probation

