



# Maricopa County

Criminal Justice System

## Monthly Performance Report for November 2011

	Annual Averages				Year-to-Date Avgs			Current Month		
	FY 2008	FY 2009	FY 2010	FY 2011	FY 2011	FY 2012	% Change	Nov-10	Nov-11	% Change
<b>Sheriff's Office</b>										
Bookings (monthly avg)	10,915	10,837	10,039	9,228	9,473	8,972	-5%	8,453	8,221	-3%
Releases (monthly avg)	10,922	10,901	10,136	9,237	9,566	8,964	-6%	8,770	8,337	-5%
Avg Daily Population	9,265	9,215	8,055	7,295	7,409	7,491	1%	7,263	7,546	4%
Avg Length of Stay (in days)	25.9	26.4	25.0	24.4	24.4	24.7	1%	26.1	26.8	3%
<b>Superior Court</b>										
Filings	3,411	3,096	2,878	2,698	2,638	2,715	3%	2,620	2,748	5%
Terminations	3,178	3,306	3,241	2,914	2,772	2,866	3%	2,837	2,797	-1%
Clearance Rate	93%	107%	113%	108%	105%	106%		108%	102%	
Active Pending Inventory	11,791	11,606	11,342	10,124	10,008	10,491	5%	9,799	10,683	9%
Trials Completed	79	79	62	48	52	53	2%	49	41	-16%
Trial Rate	2.3%	2.6%	2.2%	1.8%	2.0%	2.0%		1.9%	1.5%	
<b>Justice Courts Filings</b>										
DUI	963	952	895	841	802	689	-14%	693	573	-17%
All other Criminal Traffic	5,820	5,316	4,243	3,685	3,557	3,321	-7%	3,247	3,028	-7%
Civil Traffic	12,727	12,616	11,563	10,856	10,582	9,741	-8%	10,351	9,007	-13%
Misdemeanor	2,023	1,984	1,693	1,631	1,684	1,760	5%	1,320	1,215	-8%
Small Claims	1,377	1,307	1,403	1,154	1,248	1,006	-19%	954	913	-4%
Eviction Actions	6,730	6,005	5,232	5,253	5,725	5,763	1%	4,863	5,124	5%
Other Civil	5,785	6,944	7,274	7,628	7,923	6,437	-19%	7,382	7,181	-3%
Orders of Protection	412	299	321	344	351	373	6%	324	296	-9%
Injunctions against Harassment	415	311	273	265	255	264	4%	254	216	-15%
<b>Adult Probation</b>										
Pretrial General Supervision	772	635	554	565	548	558	2%	565	571	1%
Pretrial Intensive Supervision	1,290	1,113	866	894	787	1,118	42%	765	1,161	52%
Pretrial Electronic Monitoring	255	263	229	201	197	255	29%	194	297	53%
Standard Probation Supervision	26,439	26,093	23,117	21,750	21,917	21,641	-1%	21,884	21,596	-1%
Intensive Probation Supervision	1,088	968	813	798	794	750	-6%	792	742	-6%
Unsupervised Probation Supervision	3,453	3,802	7,166	8,528	8,699	8,412	-3%	8,817	8,435	-4%
<b>Juvenile Detention and Probation</b>										
Avg Daily Detention Pop	332	285	258	234	227	211	-7%	246	201	-18%
Avg Length of Stay (in days)	14.3	13.1	12.9	13.7	13.1	12.2	-7%	12.7	12.7	0%
Standard Probation	4,570	4,325	4,047	3,509	3,693	3,001	-19%	3,617	2,847	-21%
Intensive Probation	502	459	383	324	345	294	-15%	319	294	-8%



# Maricopa County

## Criminal Justice System

### *CRIMINAL JUSTICE SYSTEM NEWS – November 2011*

#### Adult Incarceration

**Bookings decreased** from 9,213 in October to 8,221 in November. The **Average Daily Population decreased** from 7,634 in October to 7,546 in November. The **Pretrial Population increased slightly** from October (5,342) to November (5,354). The **Sentenced Population decreased** from 2,041 in October to 1,944 in November. The **Agency Hold Population decreased slightly** from 203 in October to 202 in November. **Overall Average Length of Stay (ALOS) increased** from October (24.3) to November (26.8). **The ALOS for Sentenced increased** from 24.3 to 27.4 days, while the **Pretrial ALOS increased** from 6.5 to 7.8 days. **The ALOS for Agency Holds increased** from 64.4 to 70.3 days.

#### Superior Court Filings & Case Processing

**Criminal Filings increased** from October (2,455) to November (2,748). **Terminations decreased** from 3,019 in October to 2,797 in November. The resulting **Clearance Rate** was 102%. The **Active Pending Case Inventory increased** from 10,516 in October to 10,683 in November. **Filings into RCC increased** from October (1,462) to November (1,564). **Filings into EDC increased** from 766 in October to 897 in November. The **Number of Trials Completed decreased** from 65 in October to 41 in November. **The Trial Rate** was 1.5%.

#### Justice Court Filings

**DUI Filings decreased slightly** from October (577) to November (573). All other **Criminal Traffic Filings decreased** from 3,331 in October to 3,028 in November. **Civil Traffic Filings decreased** from 9,167 in October to 9,007 in November. **Eviction Action Filings decreased** from October (5,668) to November (5,124). **Overall Filings increased** from 27,010 in October to 27,553 in November.

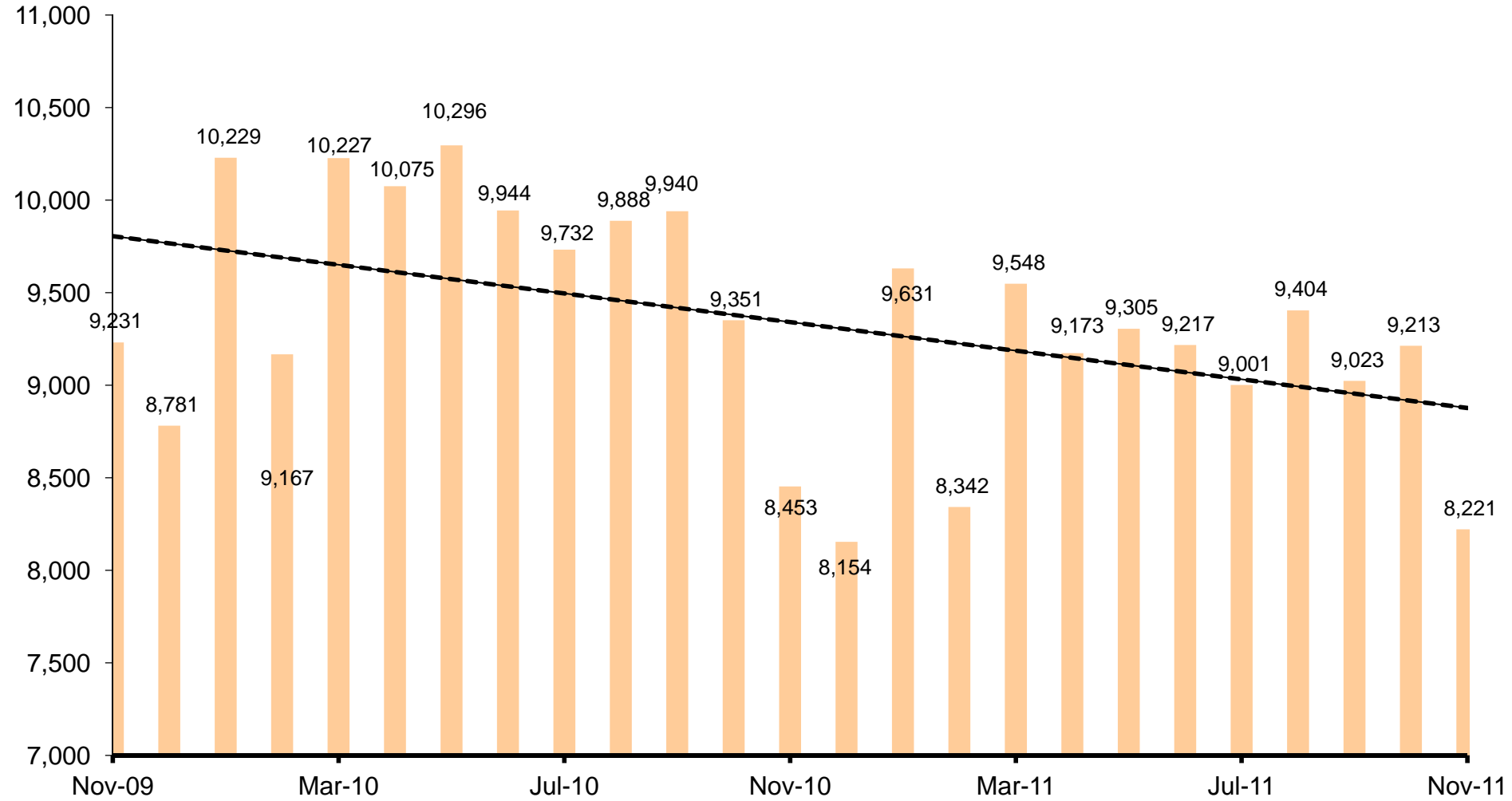
#### Adult Probation

**Pretrial General Supervision increased** from 563 for October to 571 in November. **Pretrial Intensive Supervision increased** from 1,109 in October to 1,161 in November. **Electronic Monitoring increased** from 270 in October to 297 in November. **Levels of Standard Probation Supervision decreased** from 21,639 in October to 21,596 in November. **Levels of Intensive Probation Supervision decreased** from 751 in October to 742 in November. **Levels of Unsupervised Probation Supervision decreased** from 8,522 in October to 8,435 in November.

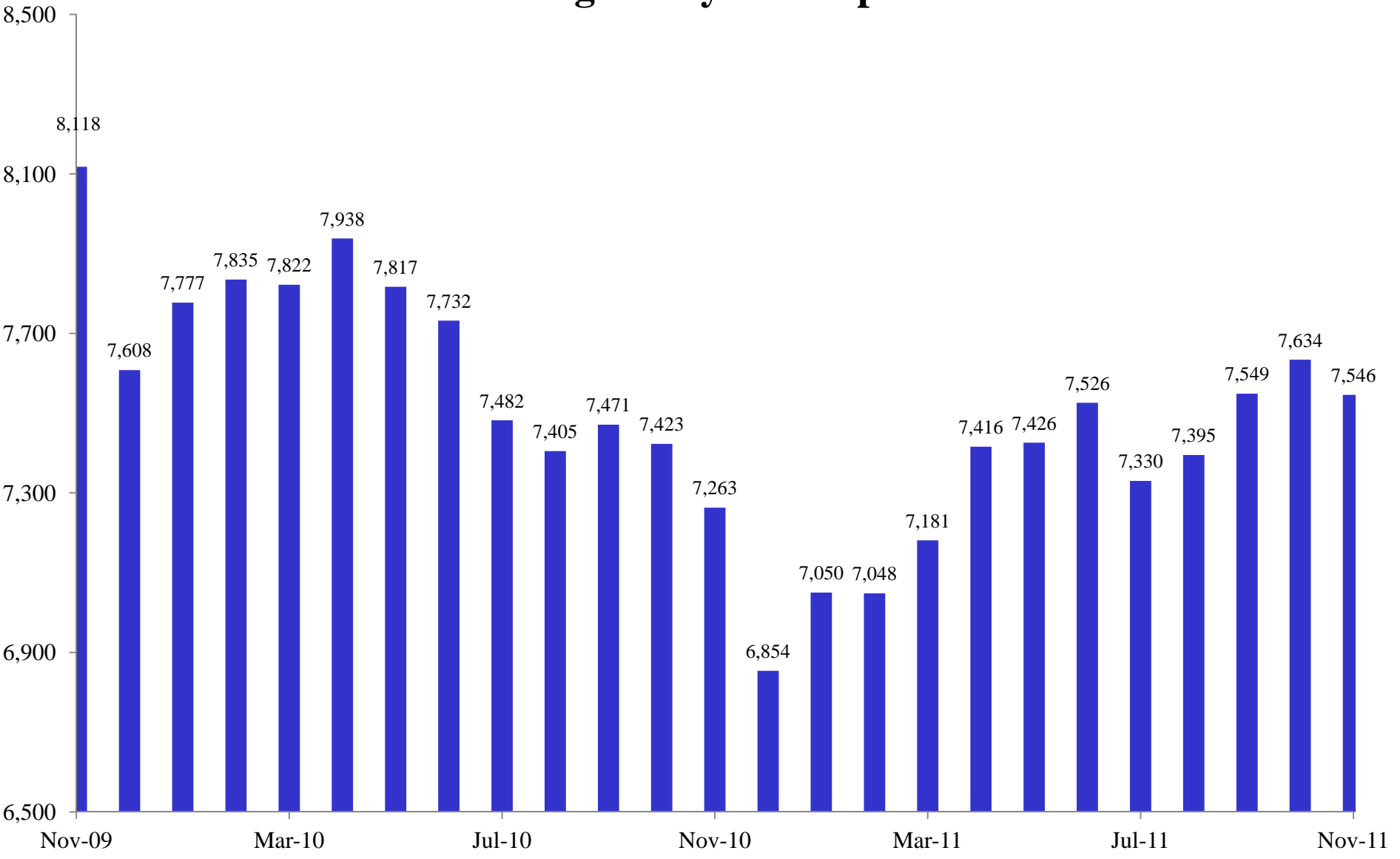
#### Juvenile Detention and Probation

The **Average Daily Detention Population decreased** from 213 in October to 201 in November. **ALOS in juvenile detention increased slightly** from 12.6 to 12.7 days. **Standard probation decreased** from 2,914 in October to 2,847 in November. **Intensive Probation stayed the same with** 294 in October and November. Monthly **commitments to Arizona Department of Juvenile Corrections decreased** from 34 in October to 30 in November.

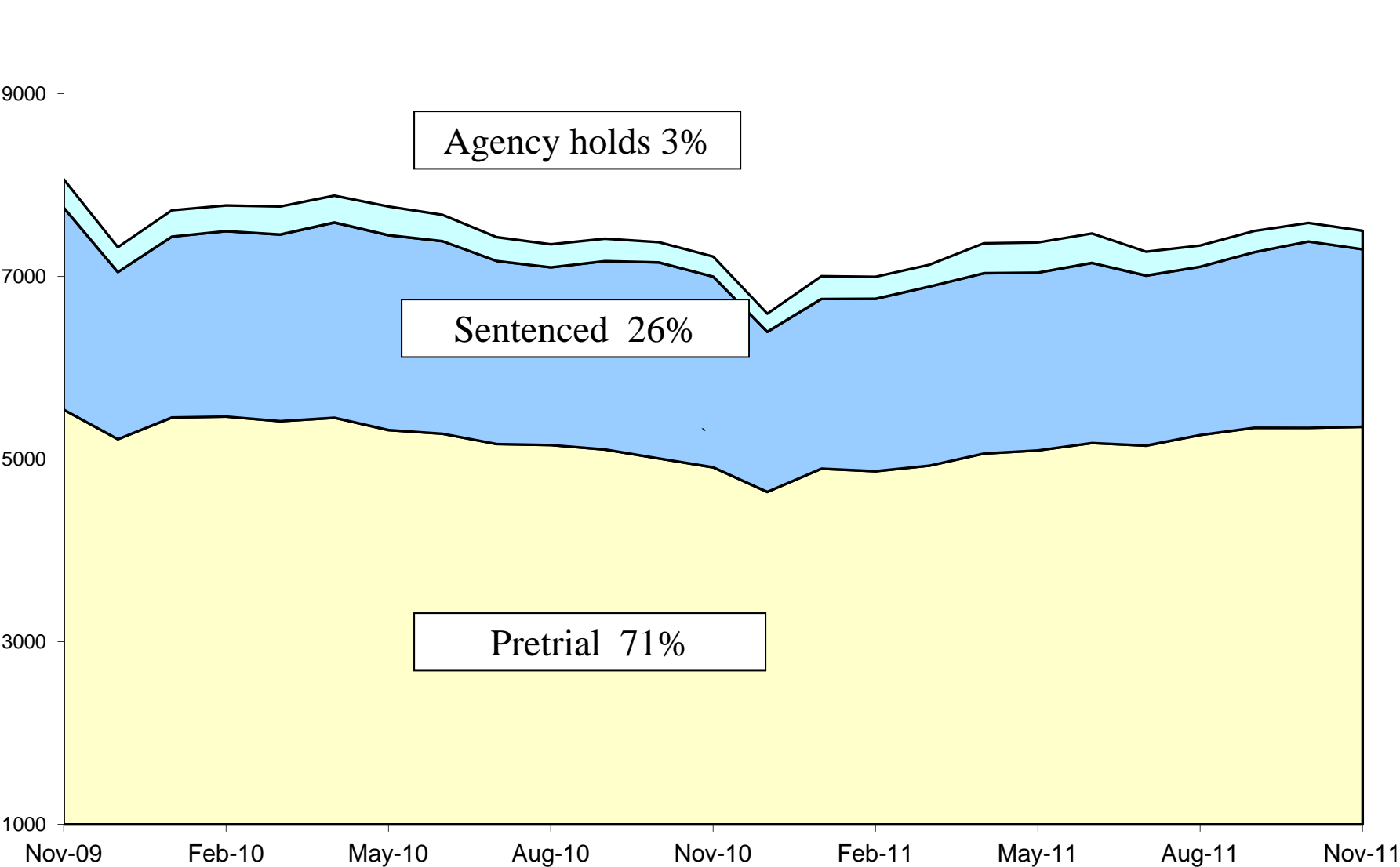
# Jail Bookings



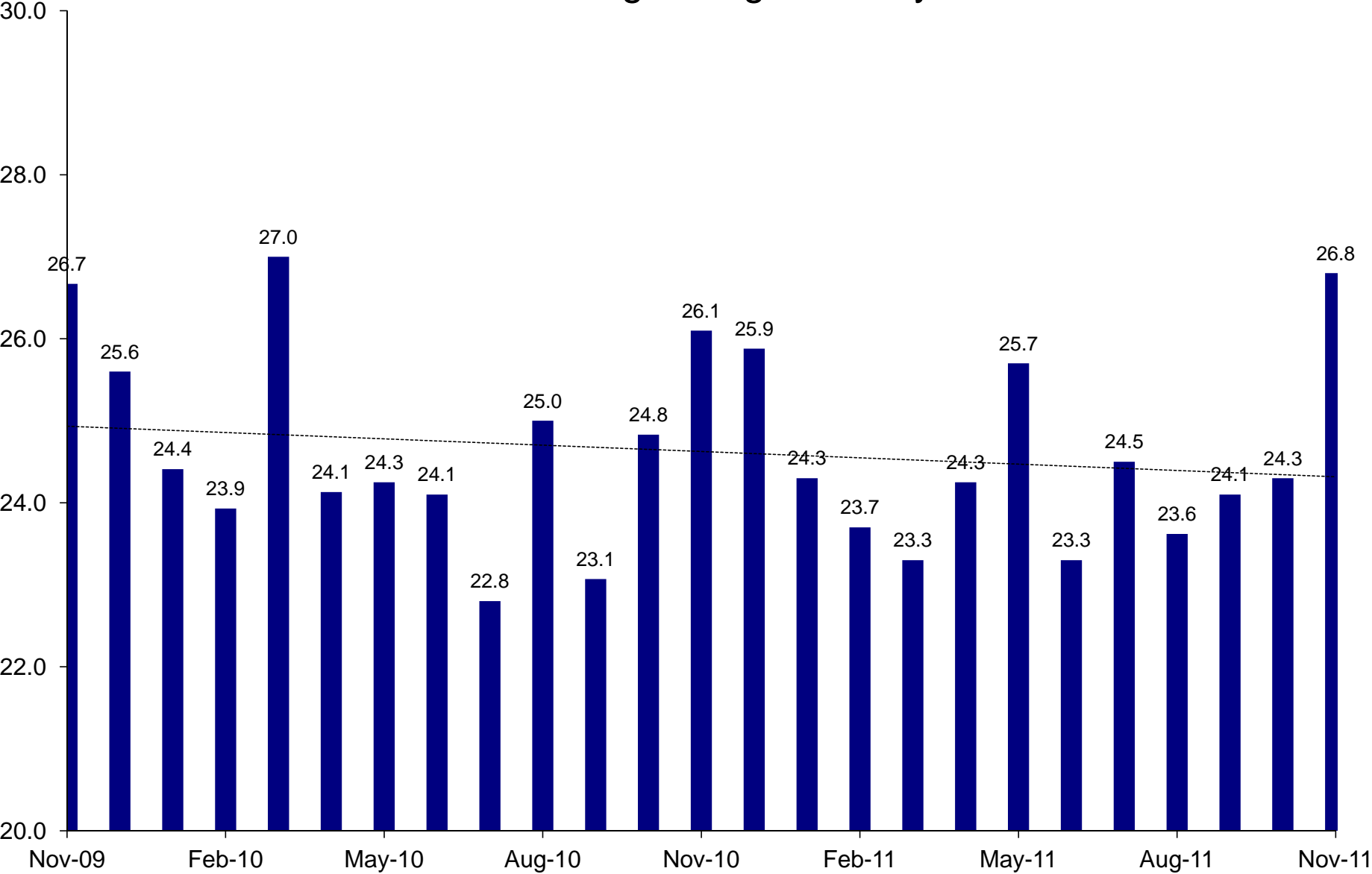
# Average Daily Jail Population



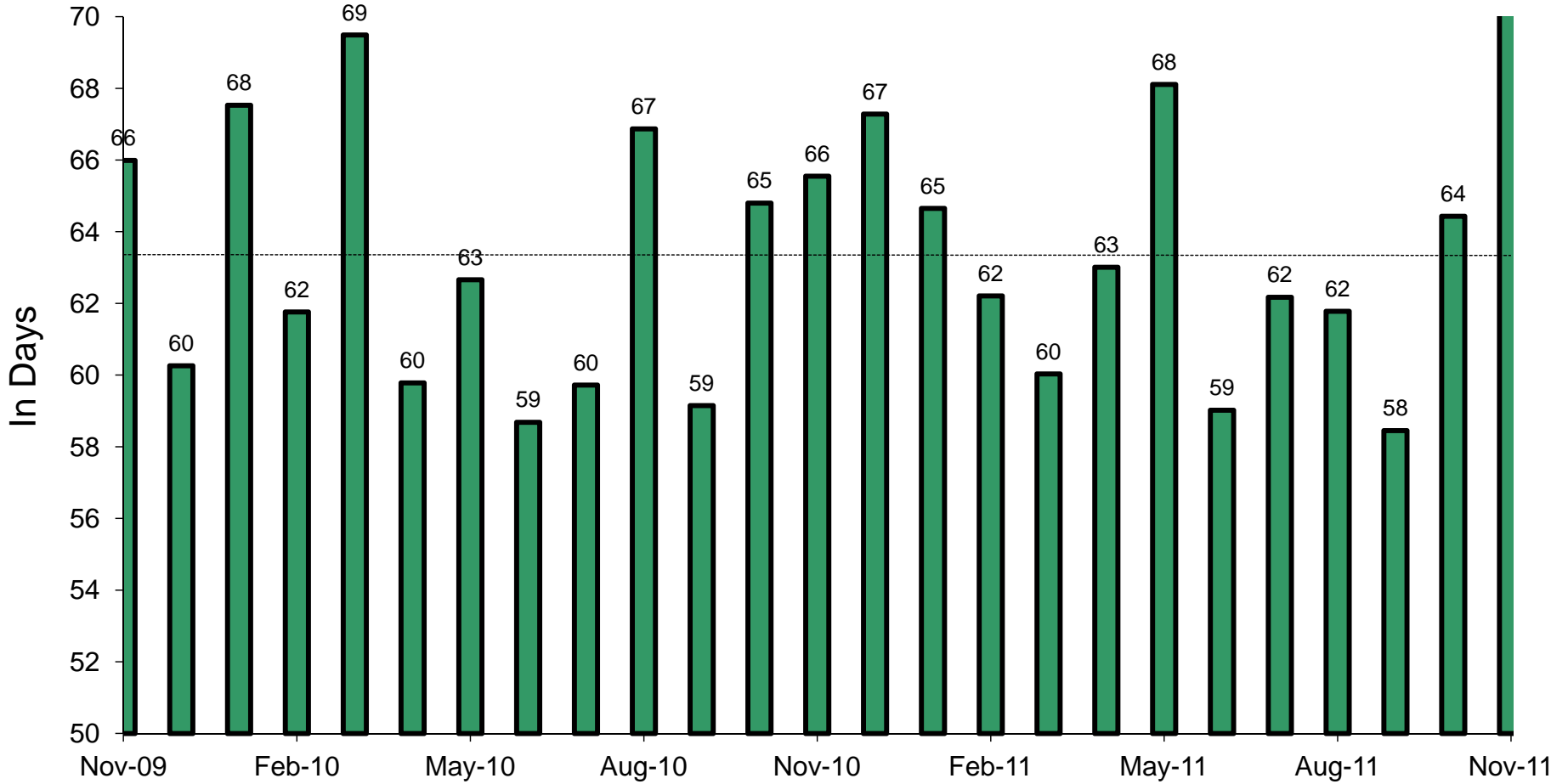
# Average Daily Jail Population by Type



# Overall Average Length of Stay in Jail

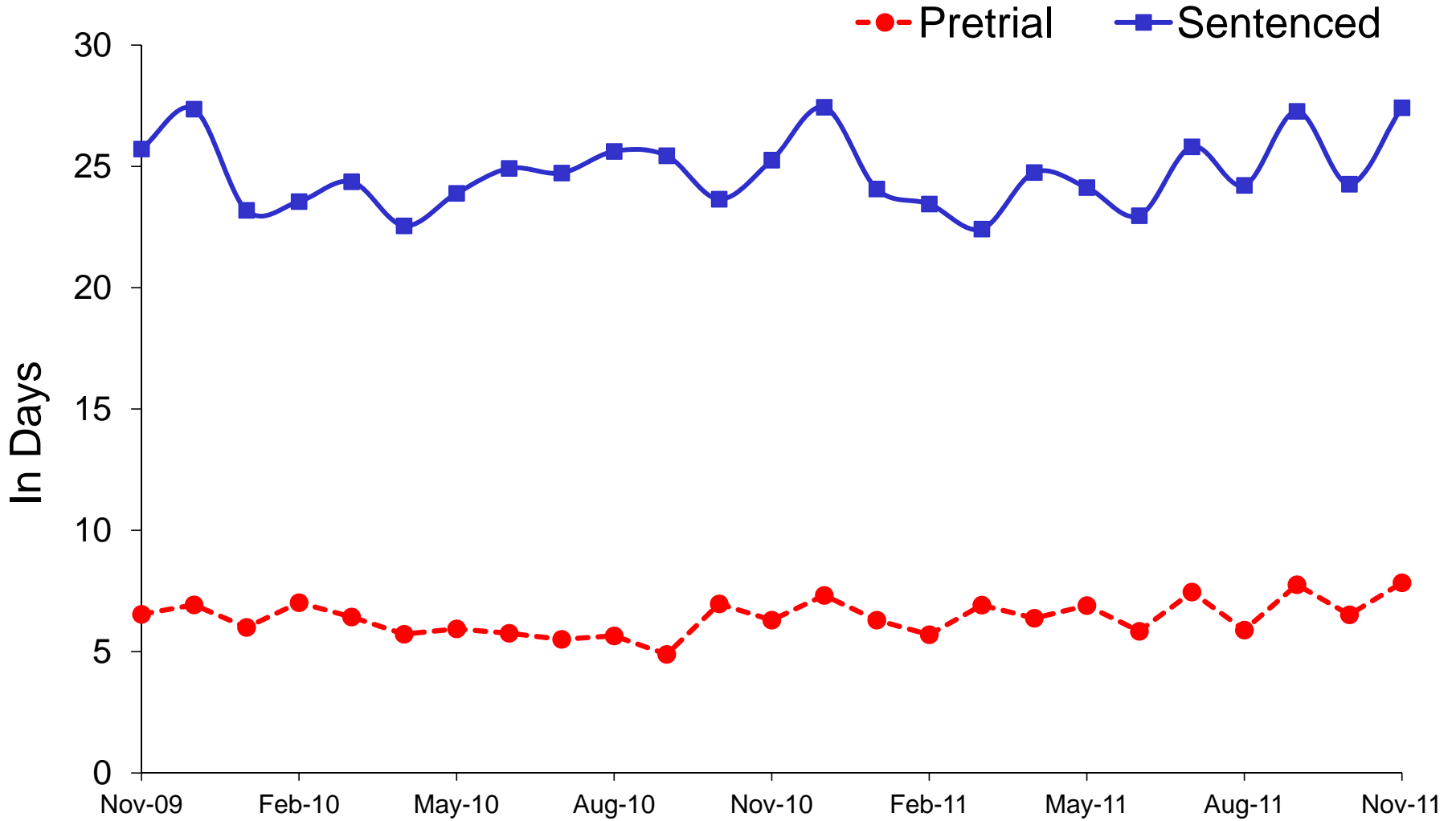


# Average Length of Stay in Jail for Agency Holds



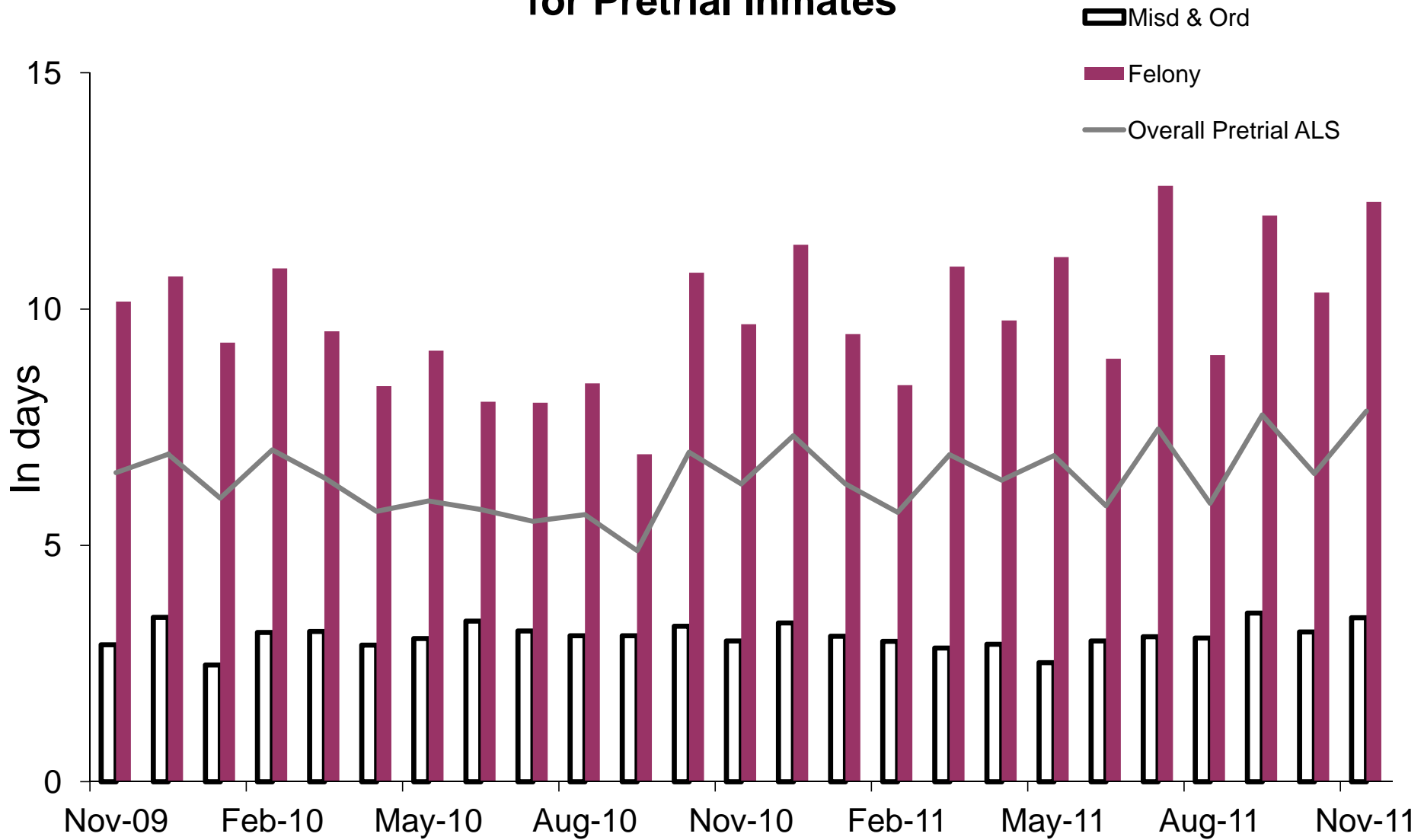
48% Dept of Corrections, 29% Federal agencies, 23% other

# Average Length of Stay in Jail Pretrial vs Sentenced Population

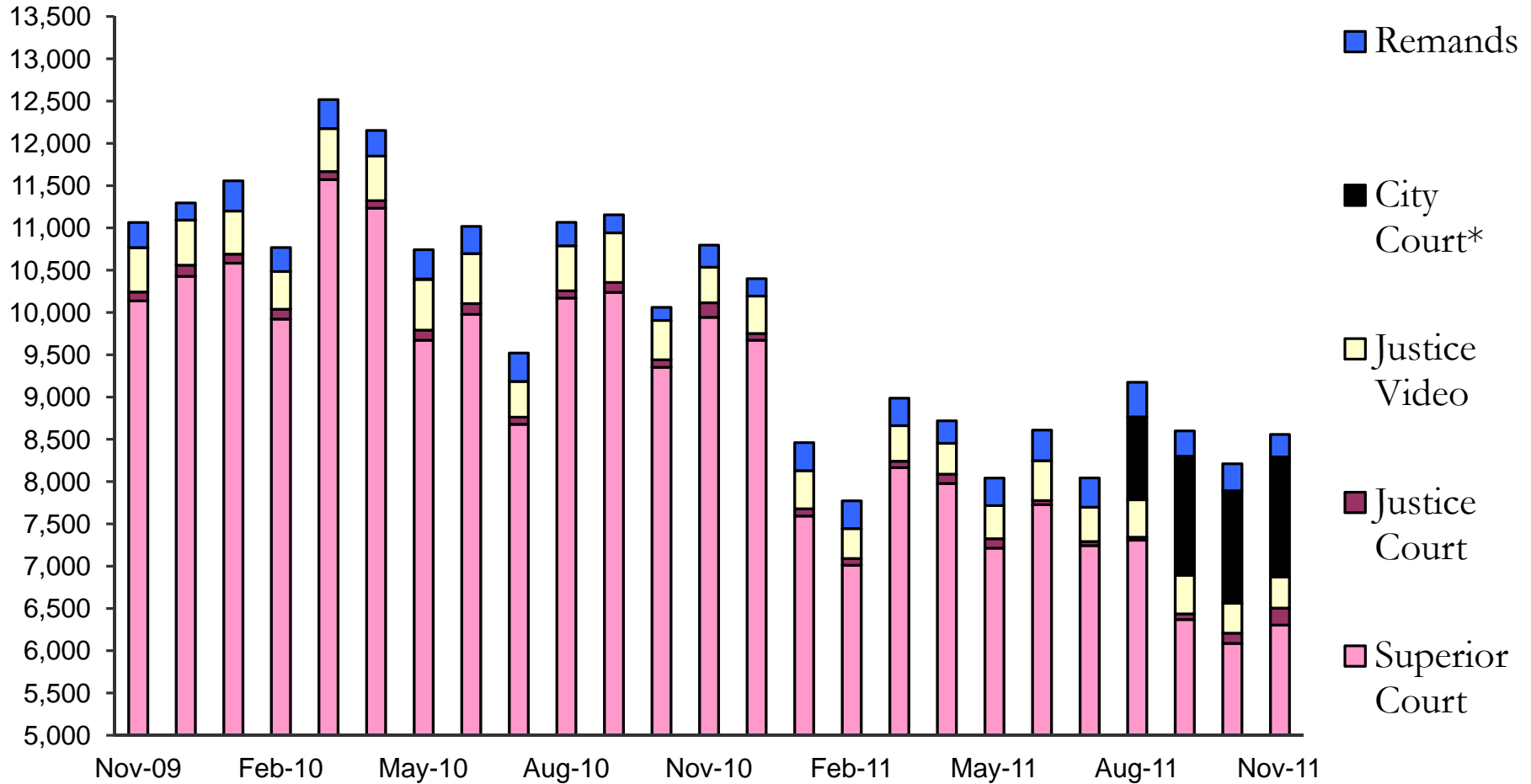




# Average Length of Stay in Jail for Pretrial Inmates

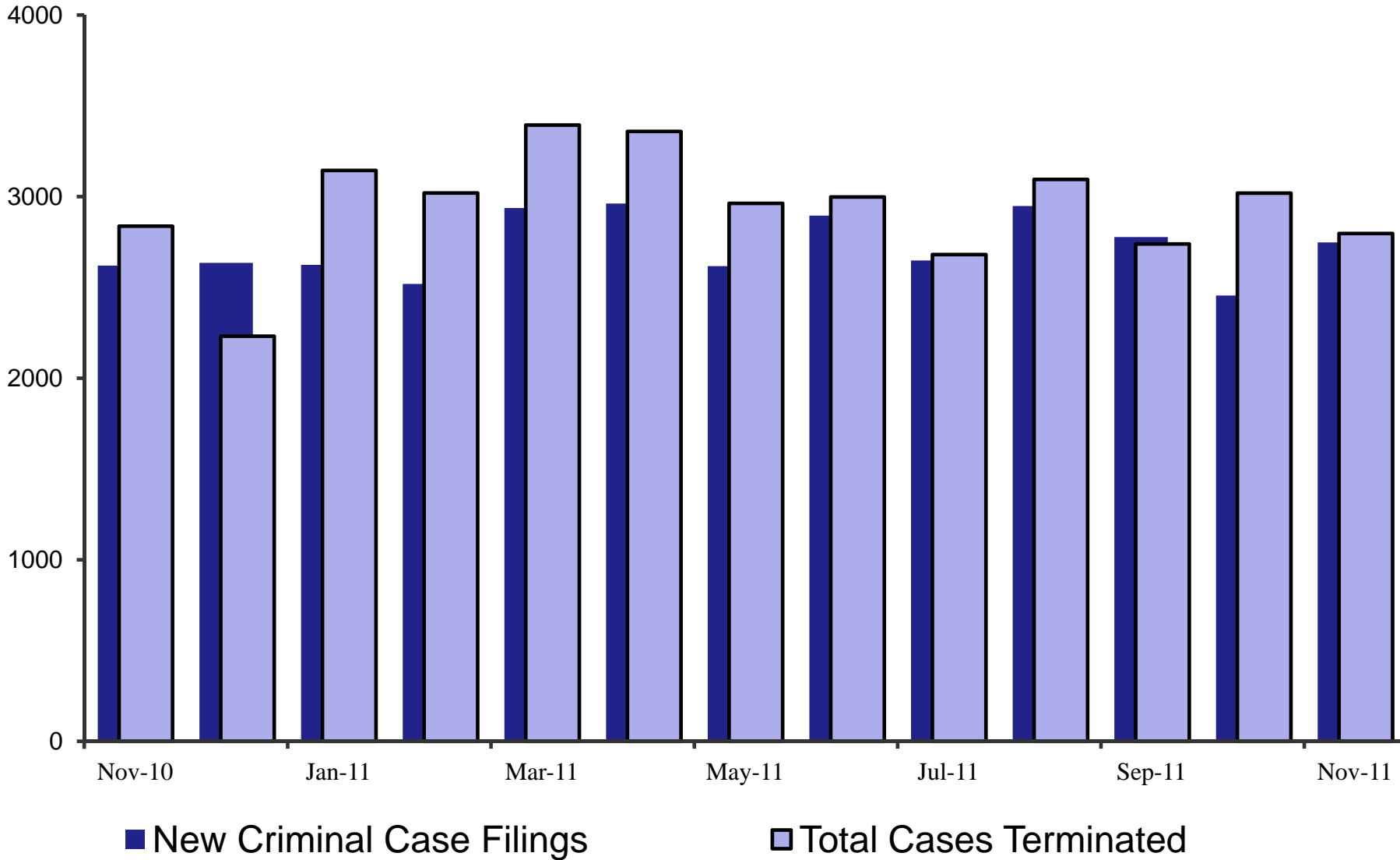


# Sheriff's Office Transports for Inmate Court Appearances



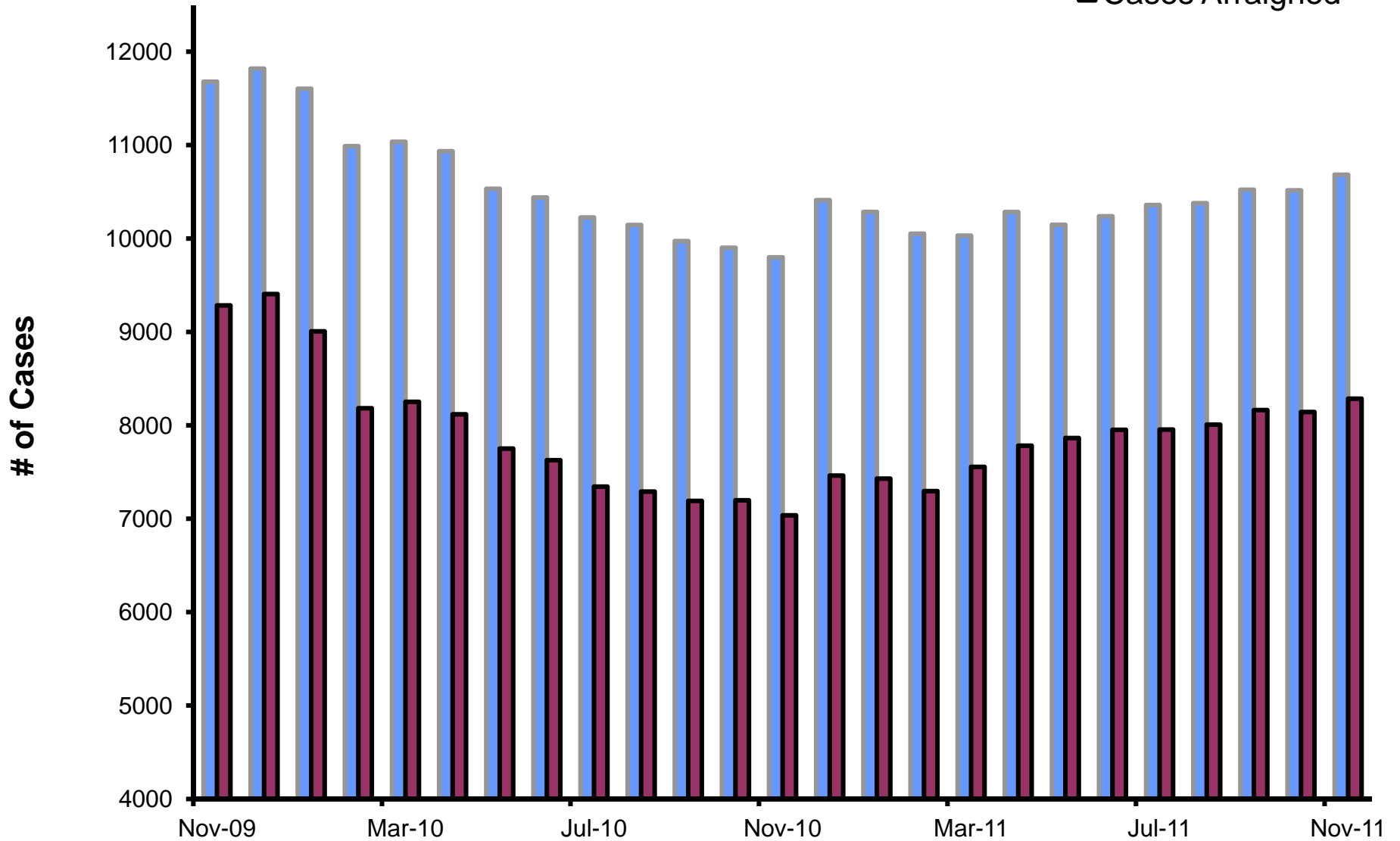
\*Prior to August 2011, City Court cases were included in the Superior Court totals.

# Superior Court Filings and Terminations

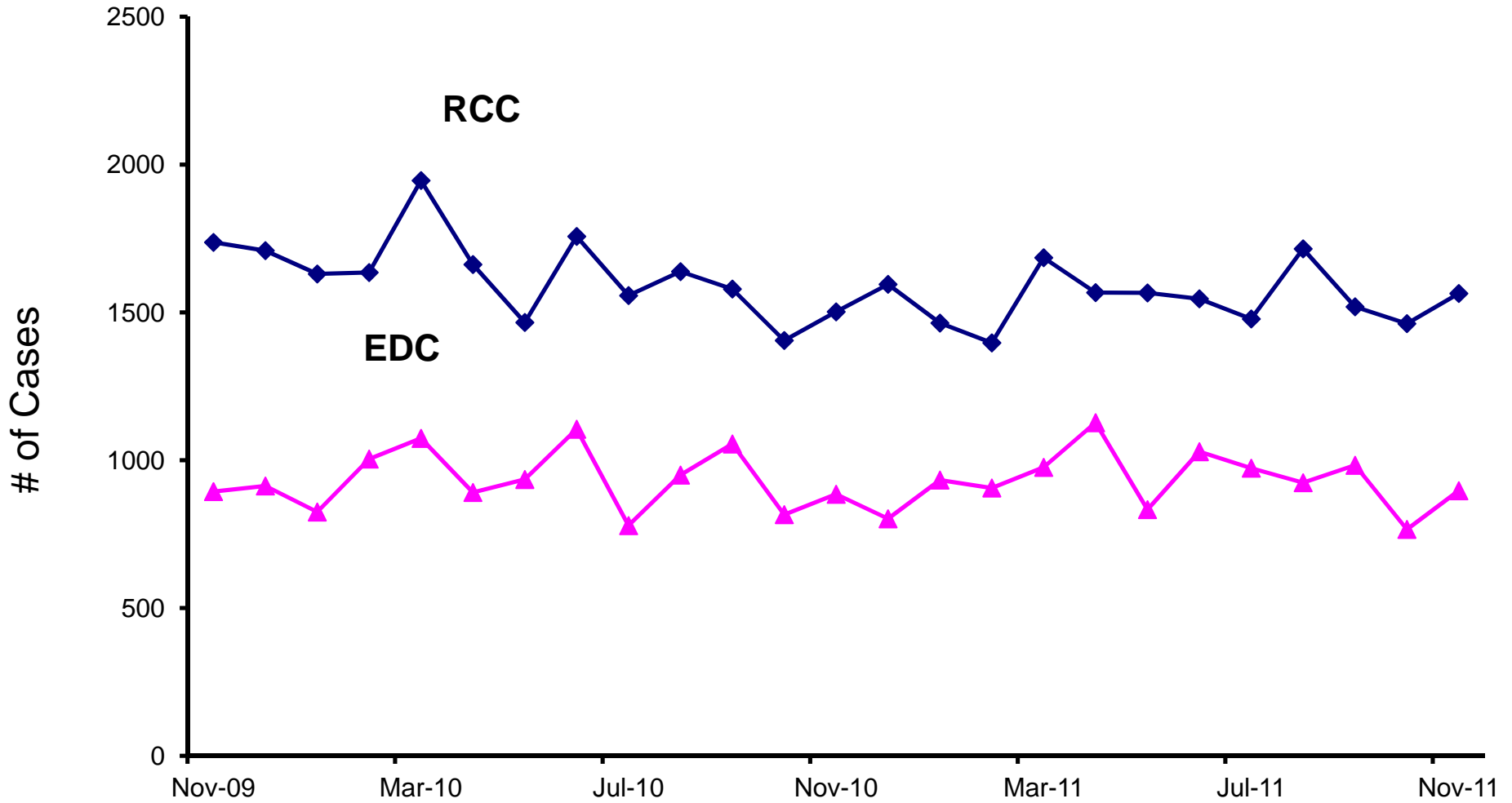


# Active Pending Criminal Case Inventory

■ Active Pending Cases  
■ Cases Arraigned

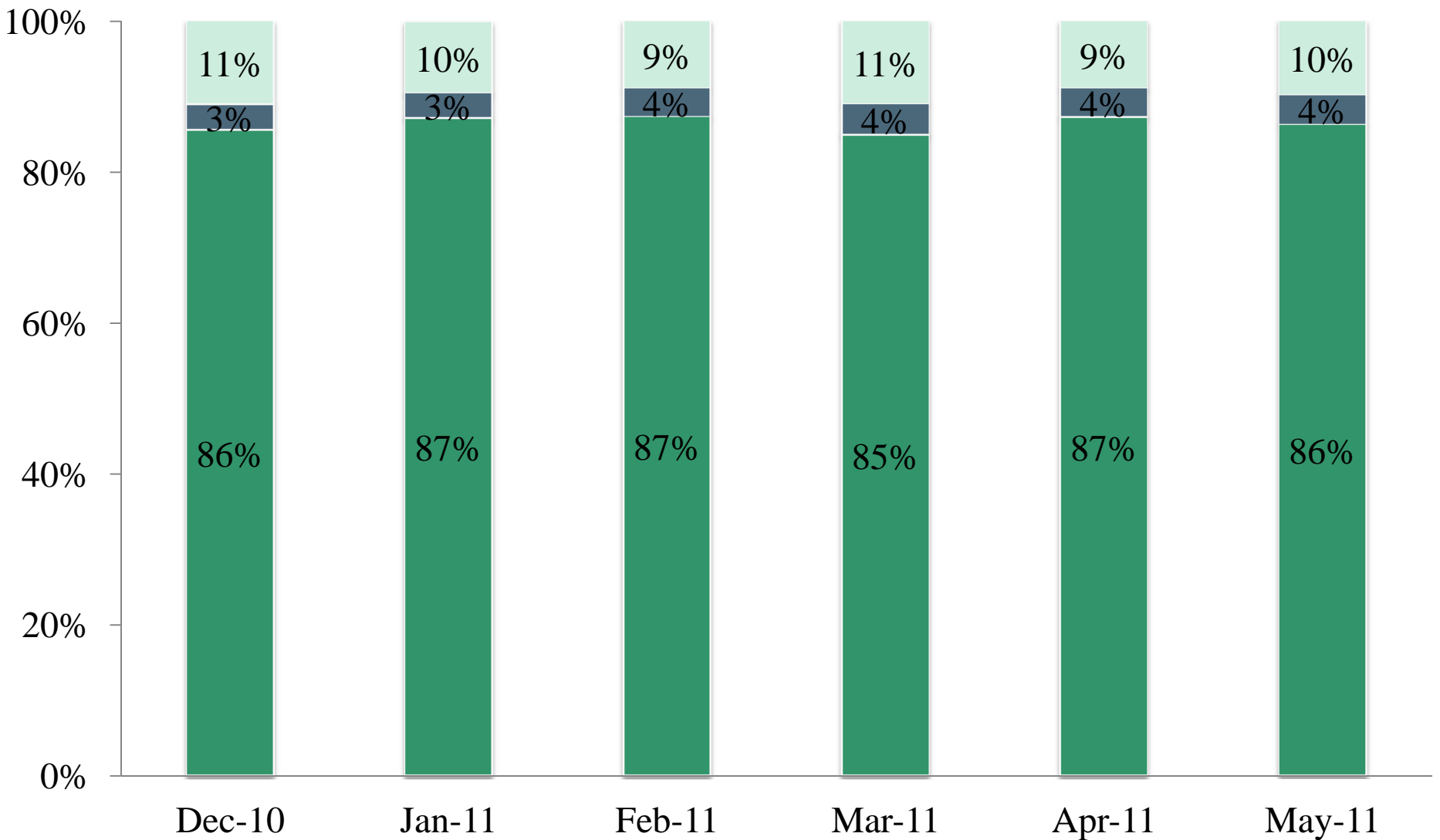


# Direct Complaints into Superior Court

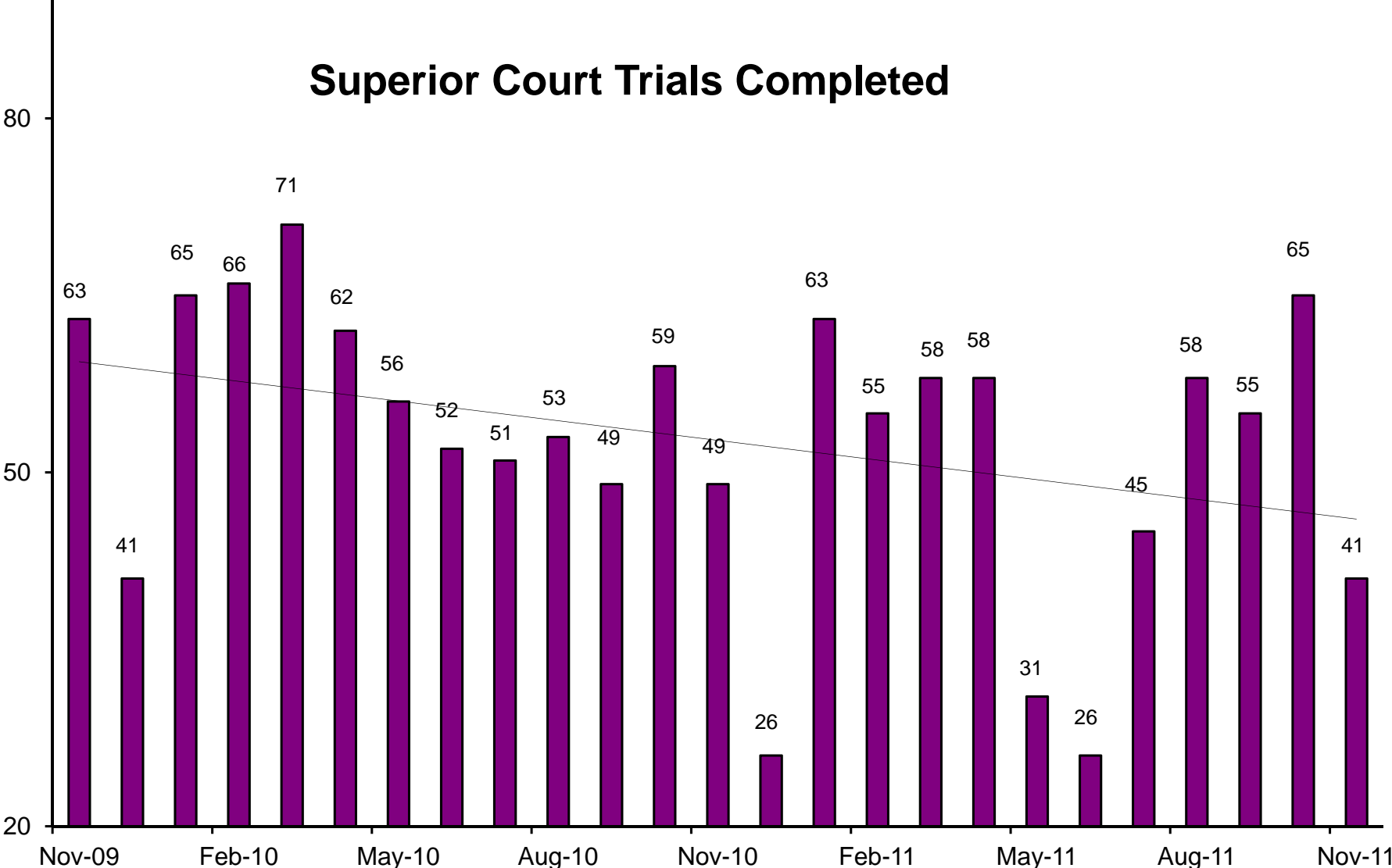


# Status of Cases After 180 Days

Active      Awaiting sentence      Terminated

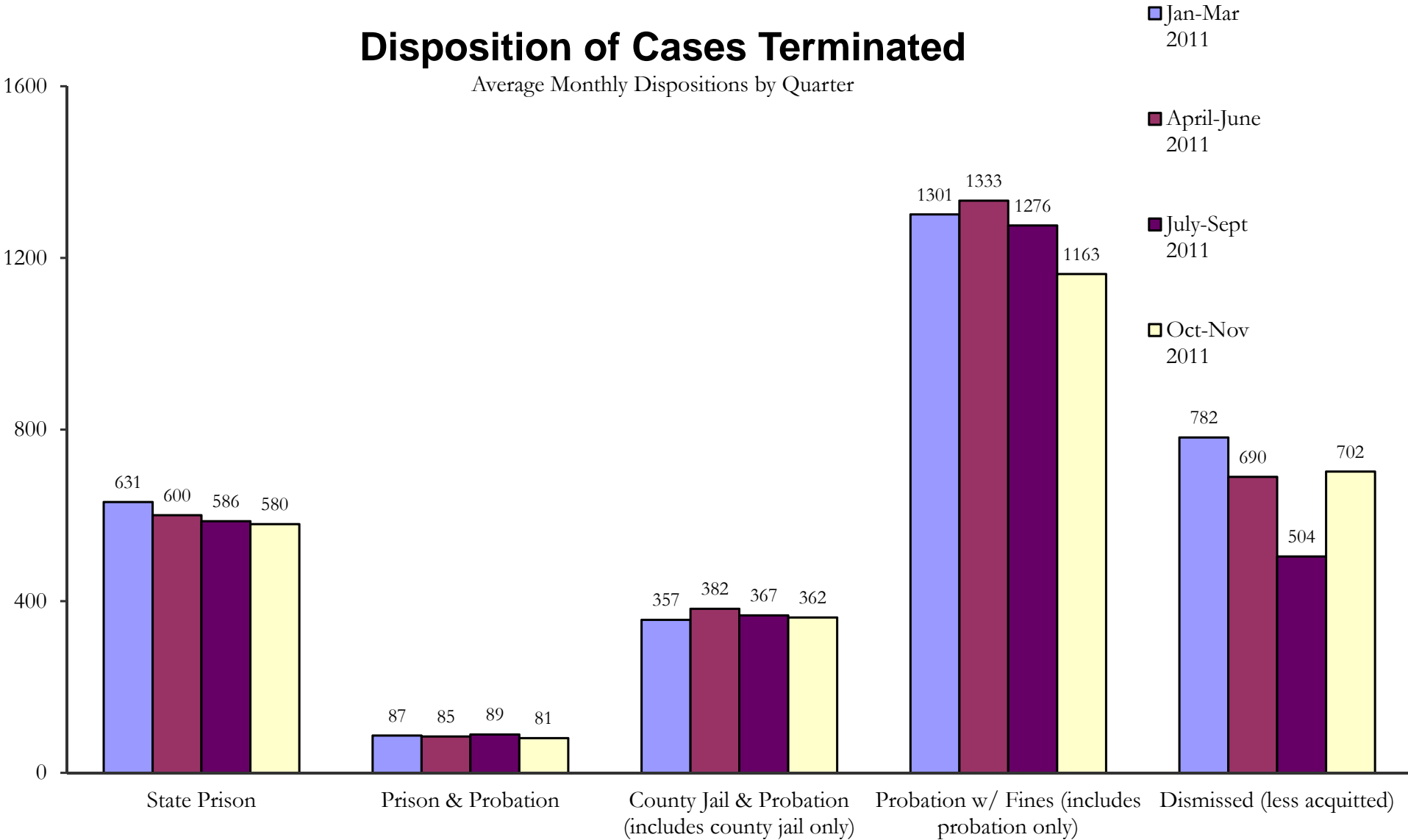


# Superior Court Trials Completed



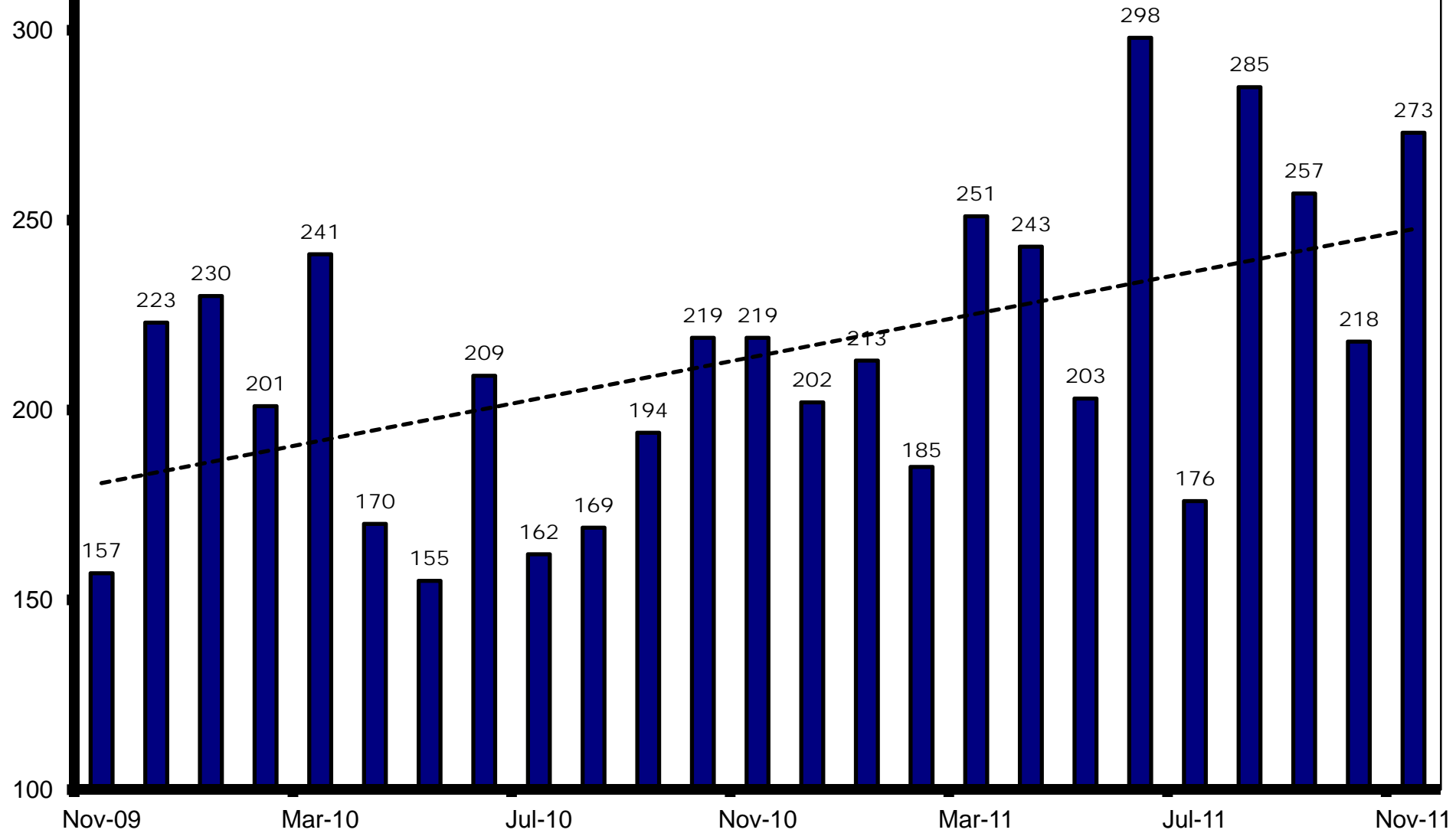
# Disposition of Cases Terminated

Average Monthly Dispositions by Quarter



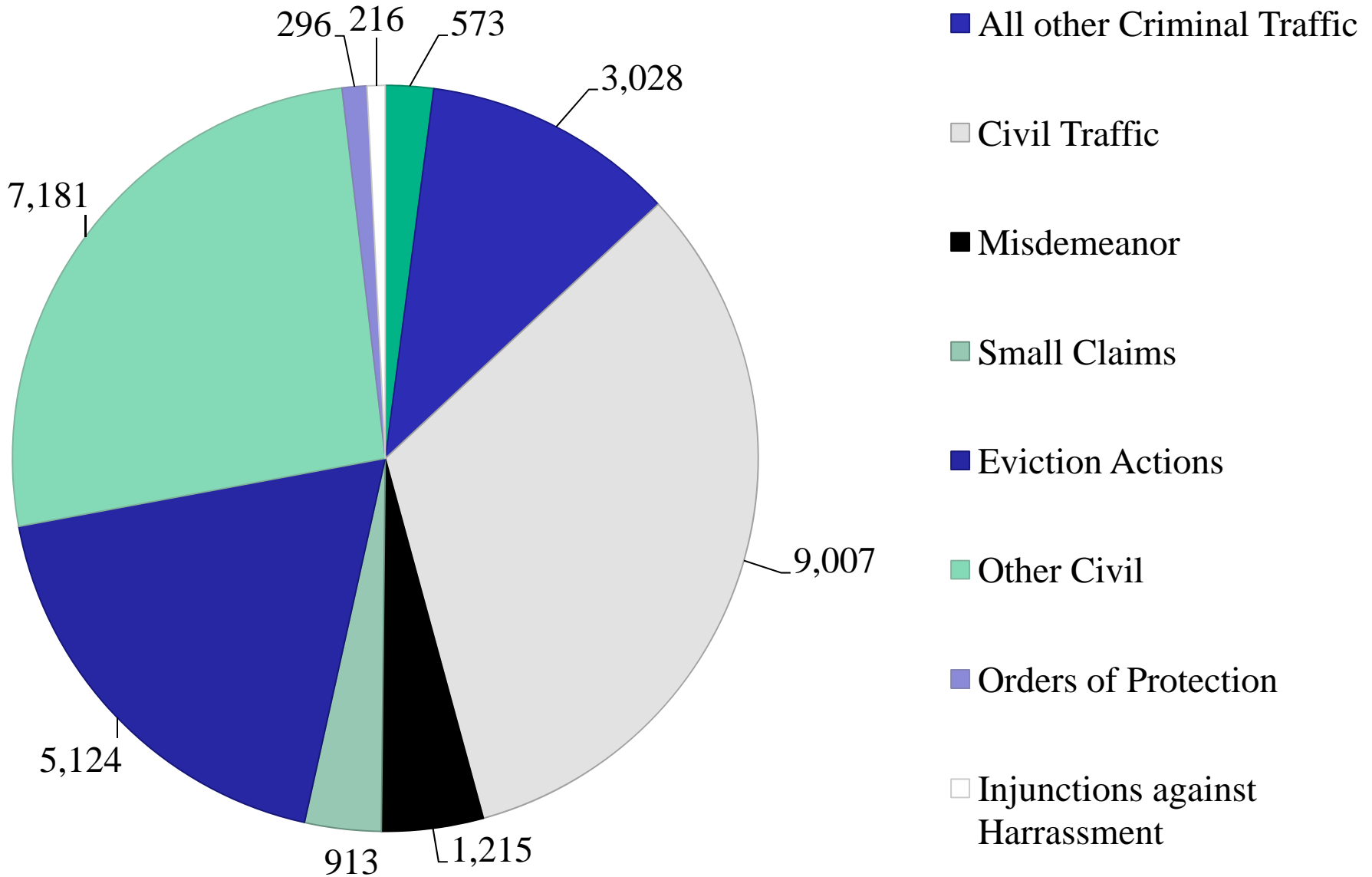


# Grand Jury Indictments



\*These numbers do not include notices of supervening indictments, non-EDC direct complaints, and juvenile direct complaints.

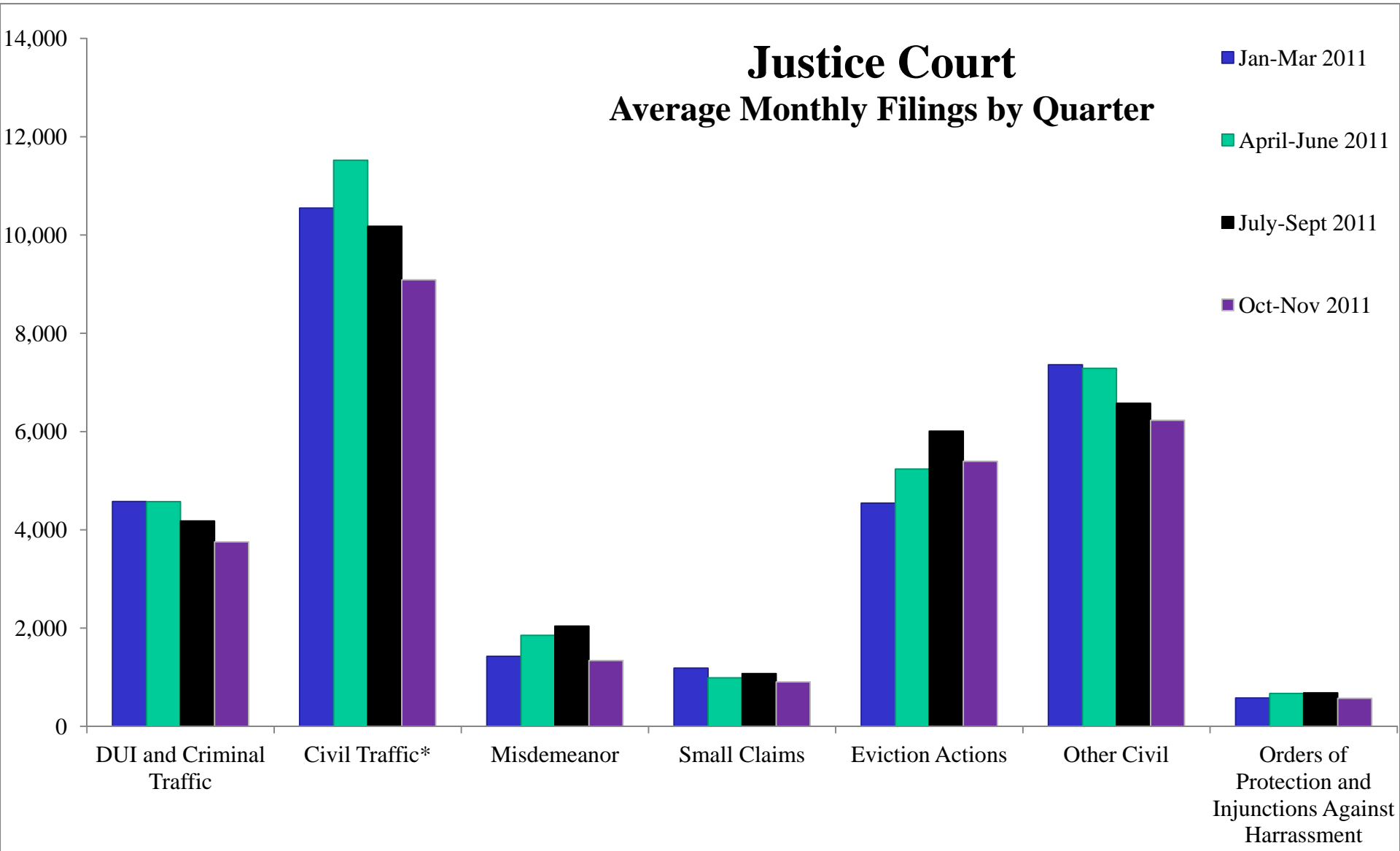
# Justice Court Filings November 2011



# Justice Court

## Average Monthly Filings by Quarter

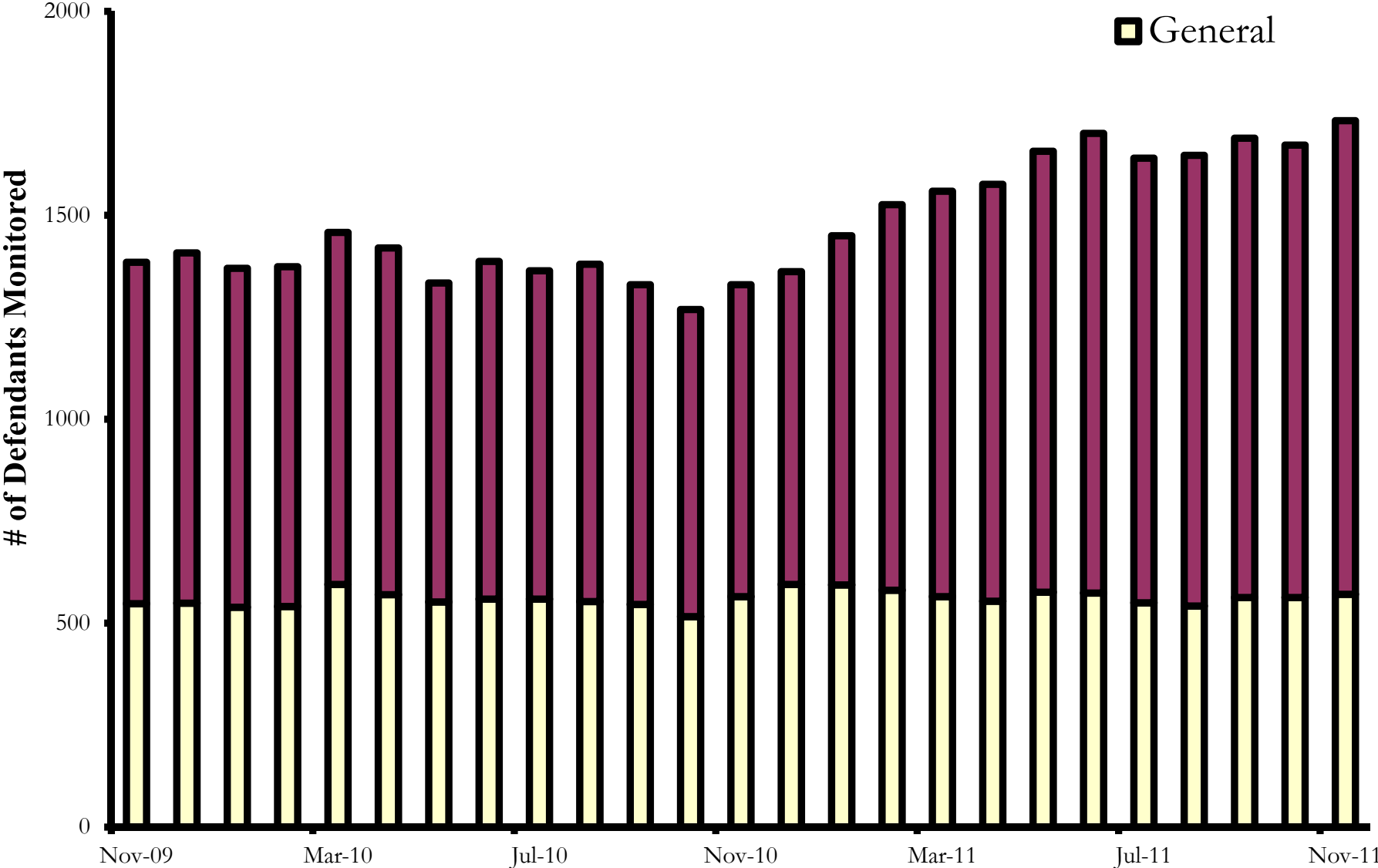
- Jan-Mar 2011
- April-June 2011
- July-Sept 2011
- Oct-Nov 2011



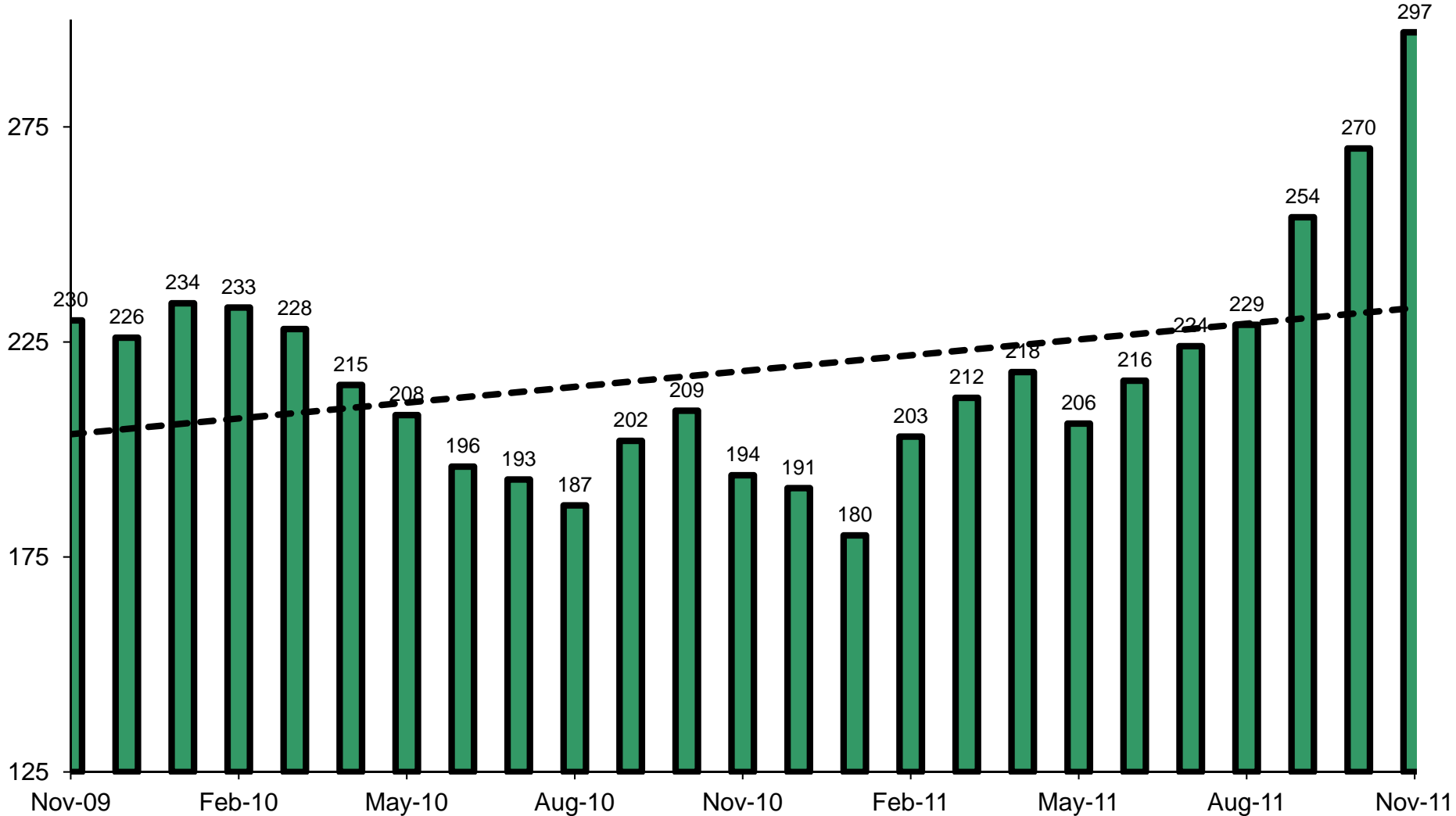
\*Filings for Civil Traffic Photo Enforcement are not included in Civil Traffic.

# Pretrial Supervision Defendant Monitoring Unit

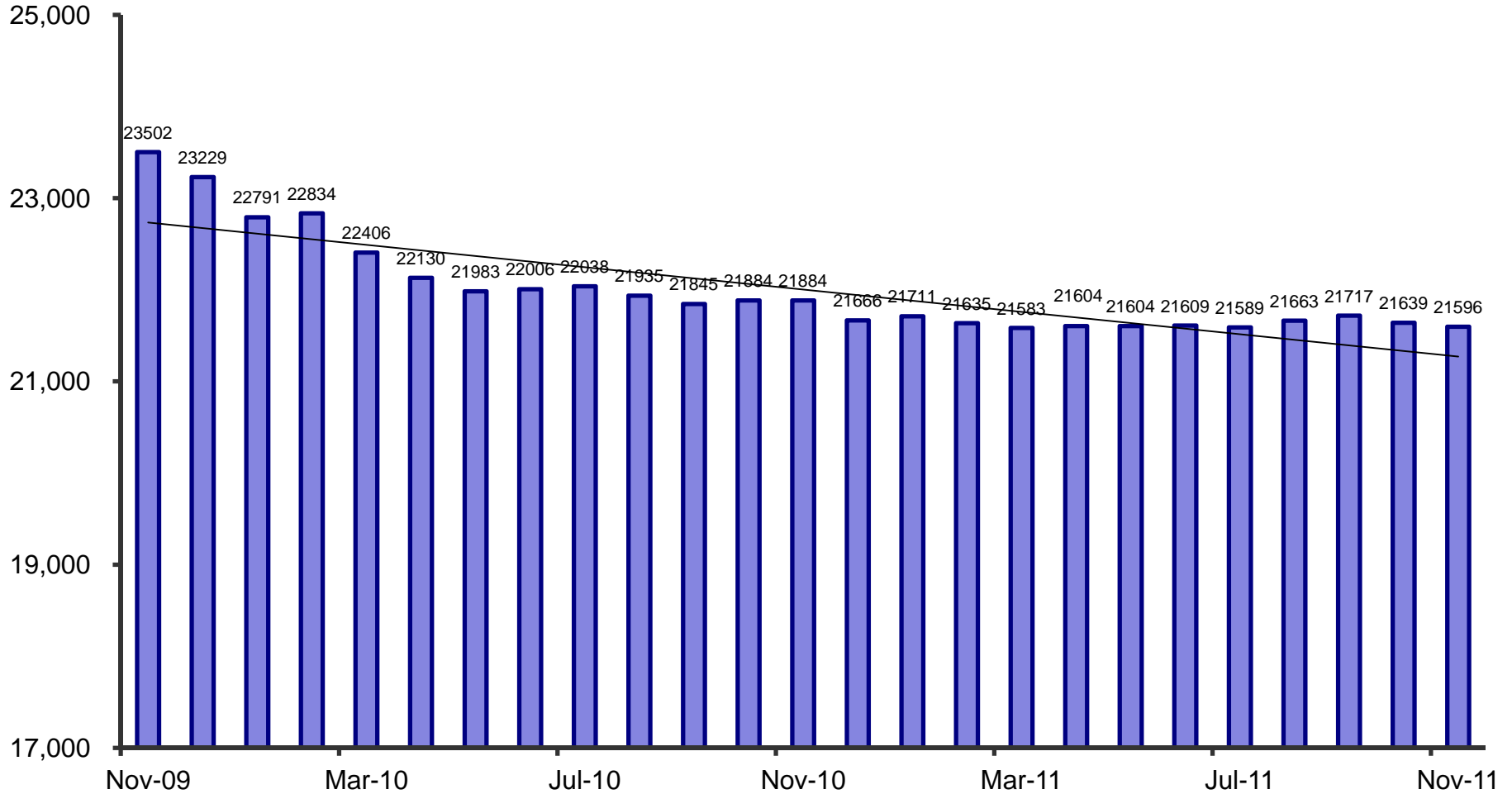
■ Intensive  
■ General



# Pretrial Supervision Defendants on Electronic Monitoring

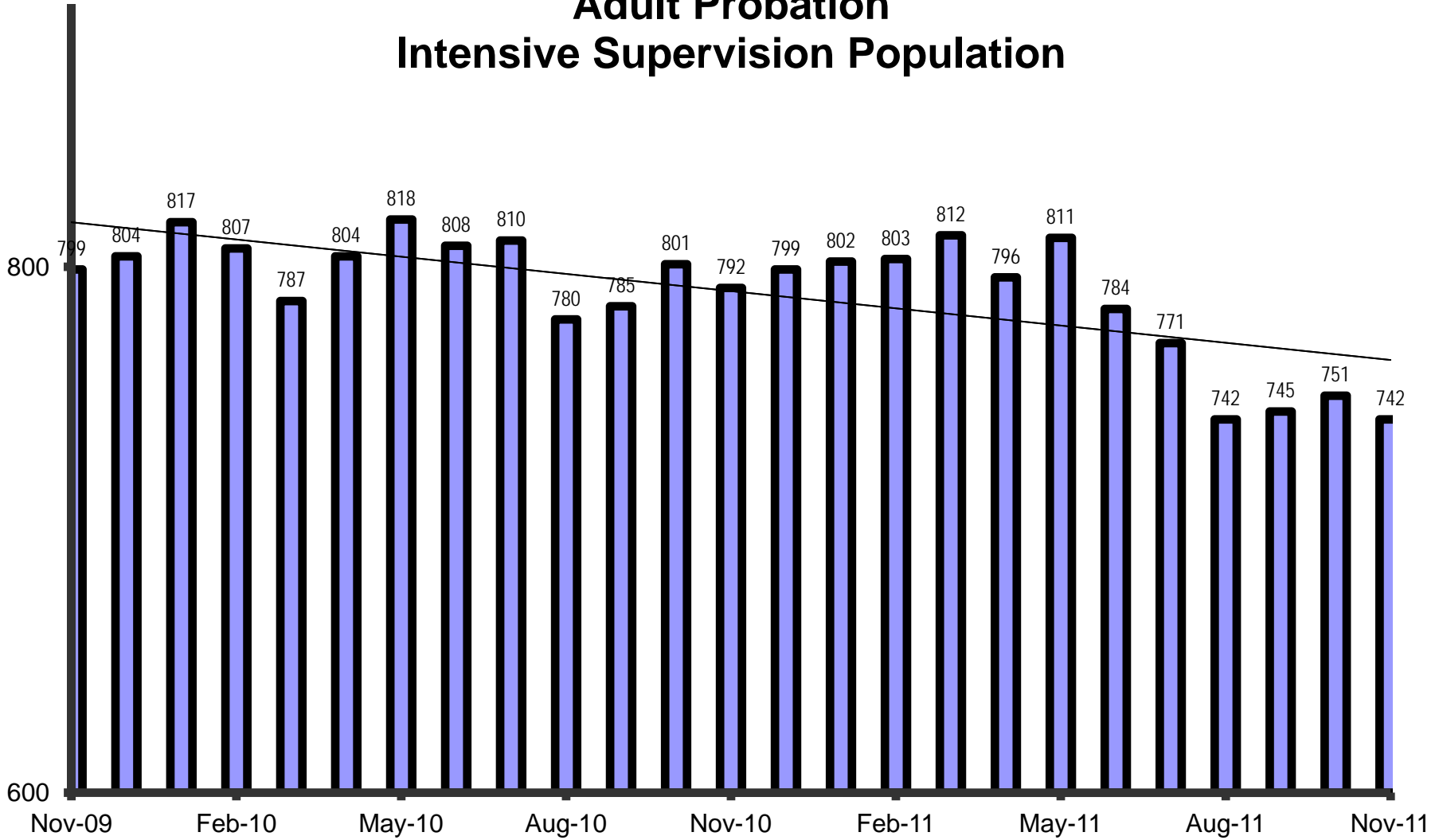


# Adult Probation Standard Supervision Population

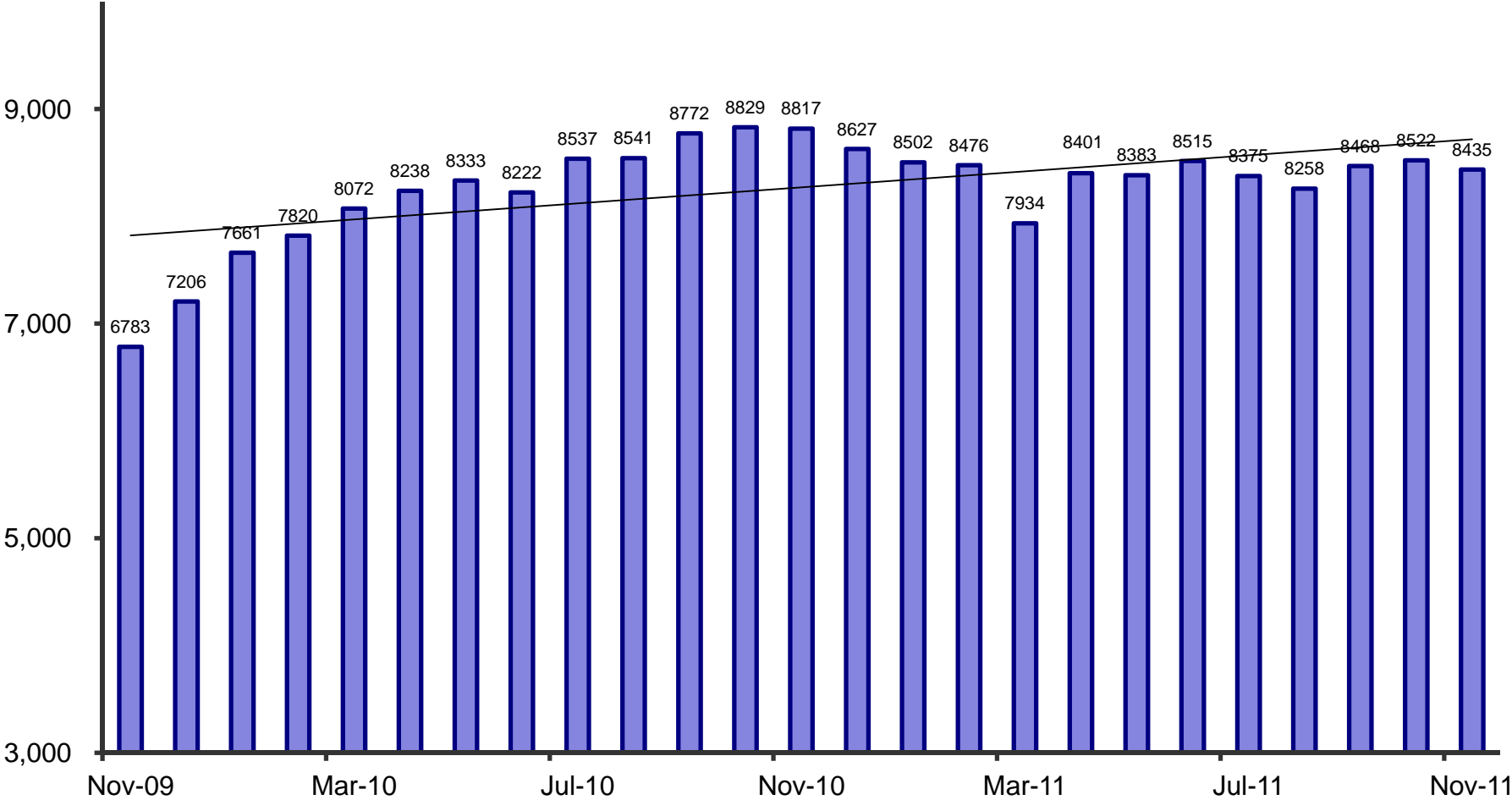


Standard and Unsupervised Probation populations were reported jointly under Standard prior to the July 2011 version of this report.

# Adult Probation Intensive Supervision Population



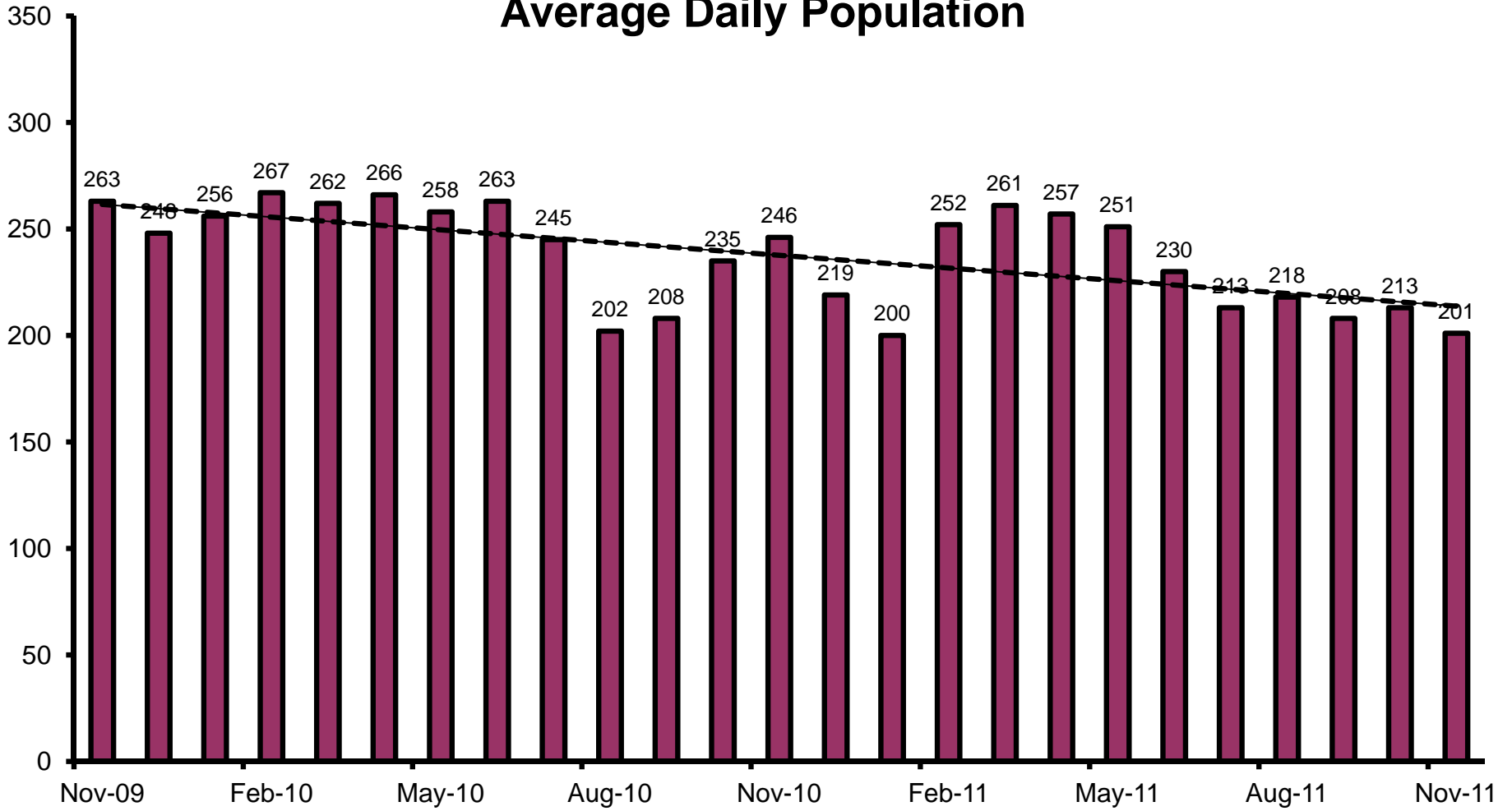
# Adult Probation Unsupervised Population



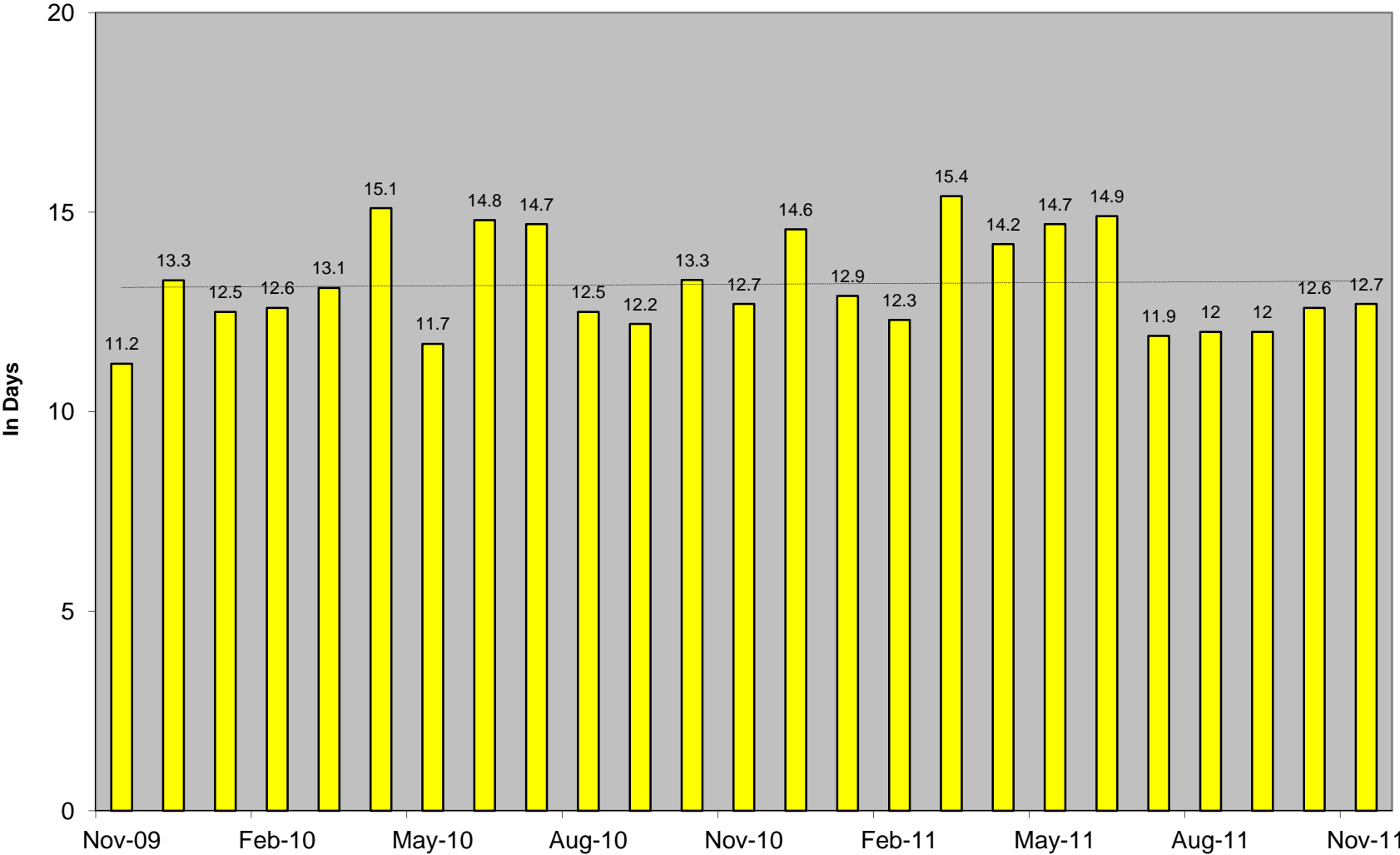
Standard and Unsupervised Probation populations were reported jointly under Standard prior to the July 2011 version of this report.



# Juvenile Detention Average Daily Population



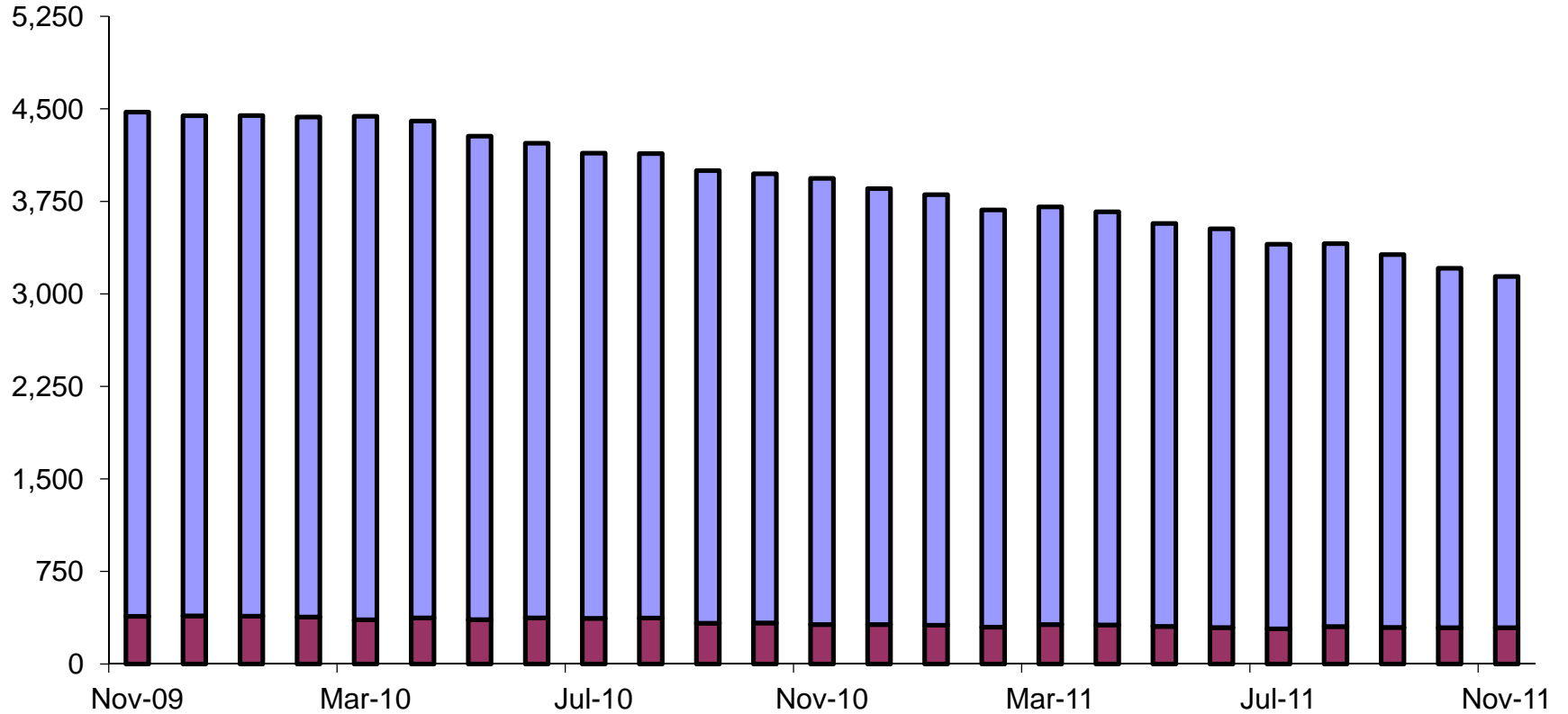
# Juvenile Detention Average Length of Stay



# Juvenile Probation

■ # on intensive probation

■ # on standard probation



Revised FY 09 results based on adjustments in iCIS reporting.