





# Maricopa County

## Criminal Justice System

### ***CRIMINAL JUSTICE SYSTEM NEWS – SEPTEMBER 2007***

#### **Adult Incarceration**

**Bookings decreased** from an August all-time high of 11,600 to September 10,987. The **Average Daily Population increased** from 9,589 to 9,723; this is the largest population since November 2005. The **pretrial population slightly increased** in September (6,586) compared to August (6,482); this is the largest pretrial population since September 2005 (6,604). The **sentenced and agency hold populations slightly increased**: sentenced from 2,721 to 2,747 and agency holds from 334 to 337. **Overall ALOS slightly decreased** from 25.1 to 24.3 days. **The ALOS for sentenced and agency holds also slightly decreased**: sentenced from 25.6 to 25.4 days and agency holds from 62.16 to 60.1 days. **Pretrial ALOS increased** from 7.5 to 8.4 days.

#### **Superior Court Filings & Case Processing**

**Criminal filings decreased** from August (3,861) to September (3,382). **Terminations decreased** significantly from 3,400 to 2,897. The resulting clearance rate was 85.7%. **The active pending case inventory increased**, as it has every month since January, from 11,416 in August to 11,663 in September (most ever). **Filings into RCC decreased** in September (2,092) compared to August (2,254), while **filings into EDC also decreased** from 1,341 in August to 1,045 in September. **The number of trials decreased** from 93 in August to 77 in September. **The trial rate stayed almost the same**, decreasing from 2.4% to 2.3%.

#### **Justice Court Filings**

**Forcible detainer filings decreased** from August (7,576) to September (7,182). Overall, August total filings were 38,322 compared to September's 35,060.

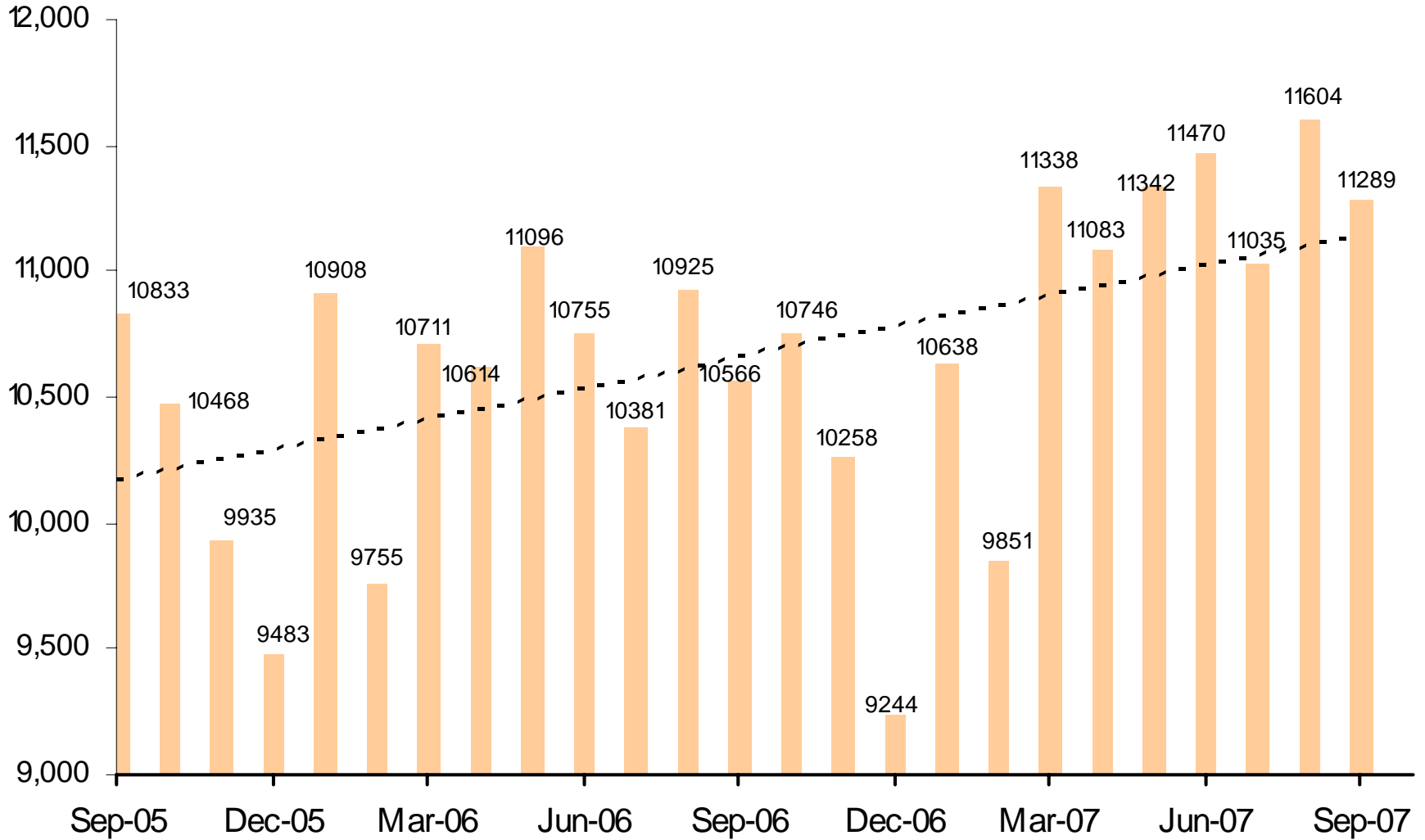
#### **Adult Probation**

**Pretrial general and intensive supervision increased** from August to September: general from 766 to 773 (highest since October 2006 – 818); intensive from 1,156 to 1,164 (highest since October 2006 – 1,193). Electronic monitoring decreased from 234 to 220. **Levels of standard probation supervision decreased** from 30,053 to 29,960, while **levels of intensive probation supervision also decreased** from 1,132 in August to 1,081 in September.

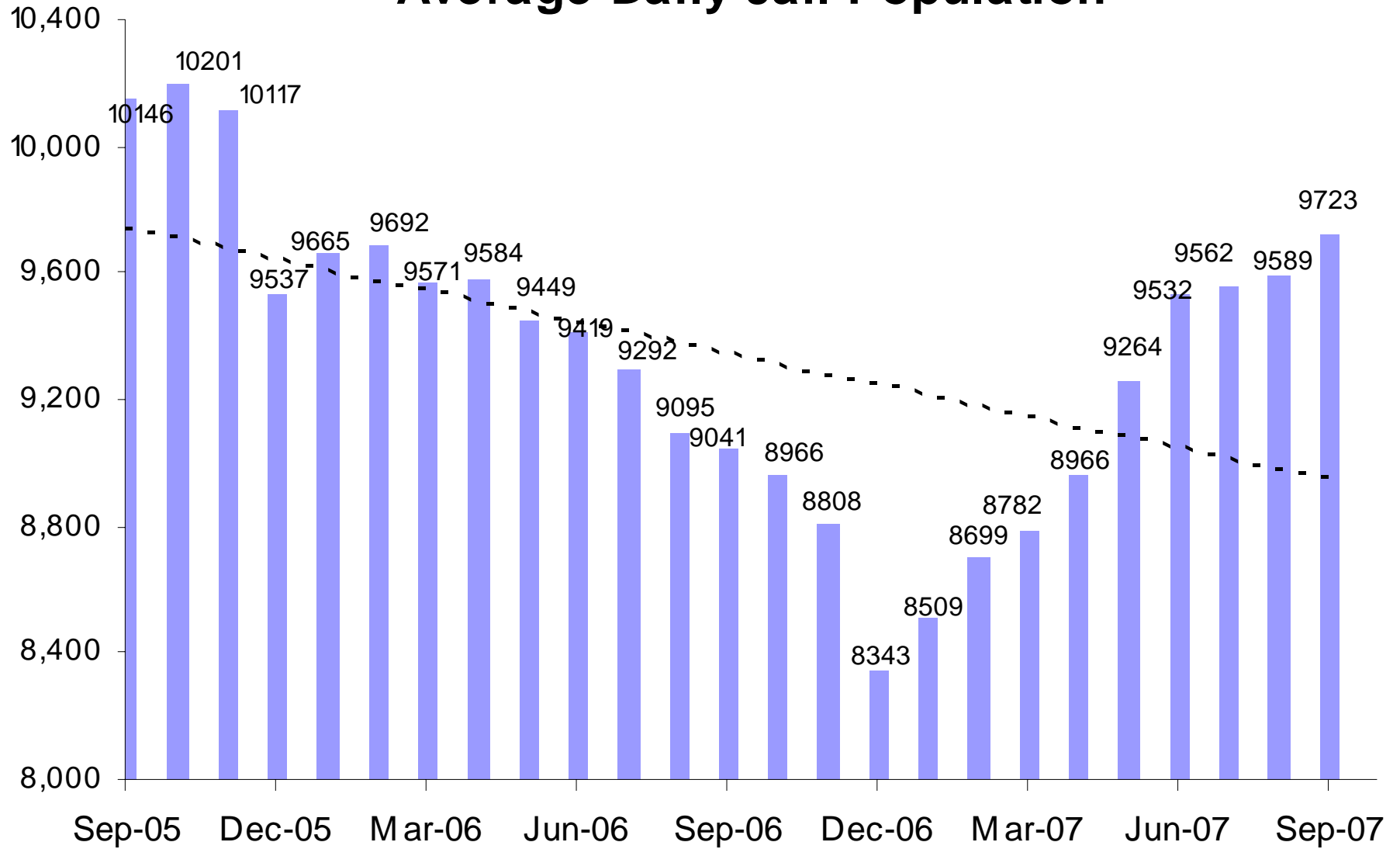
#### **Juvenile Detention and Probation**

\*\*\*Please note – due to conversion to iCIS database, September's data is not available.\*\*\*

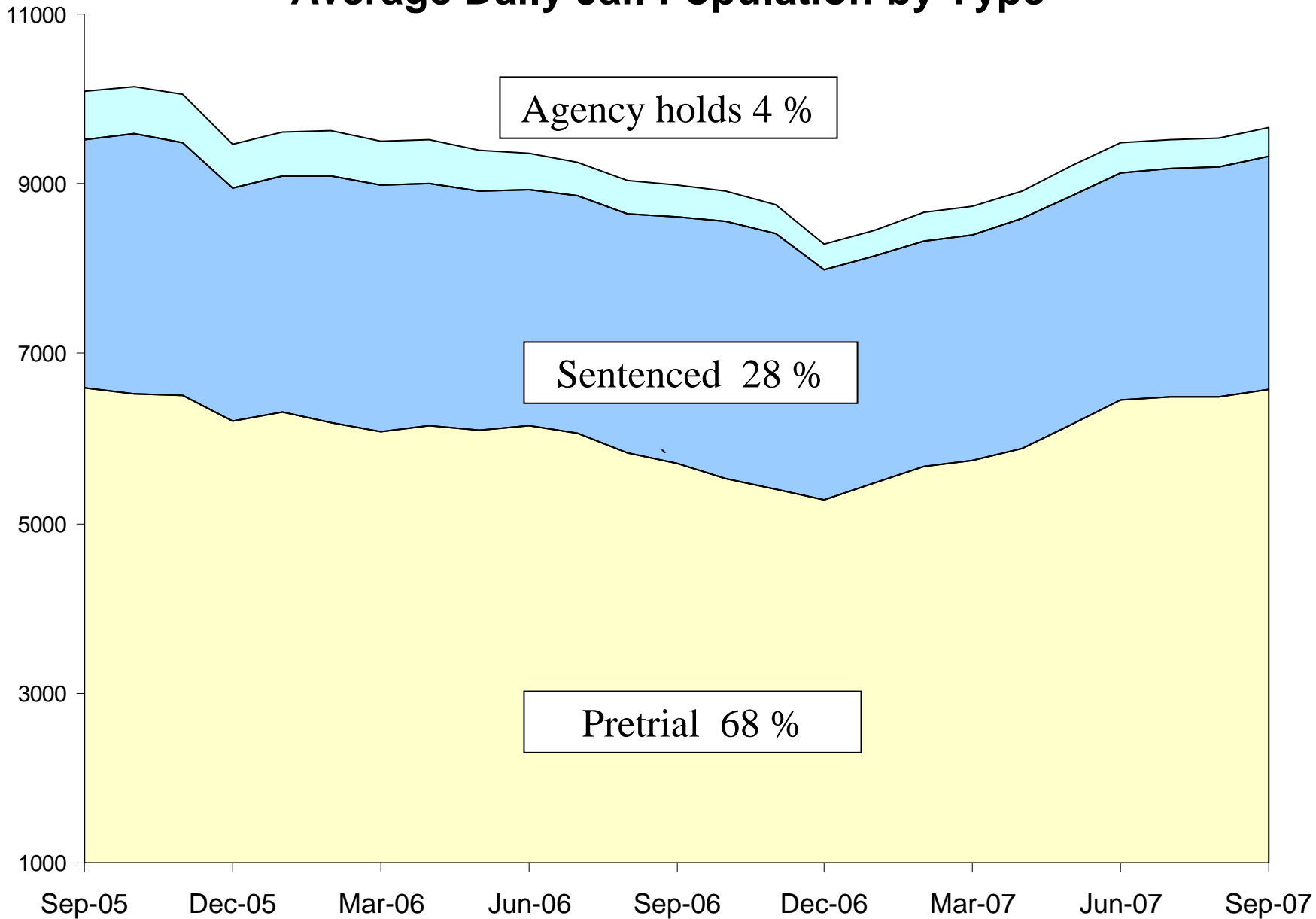
# Jail Bookings



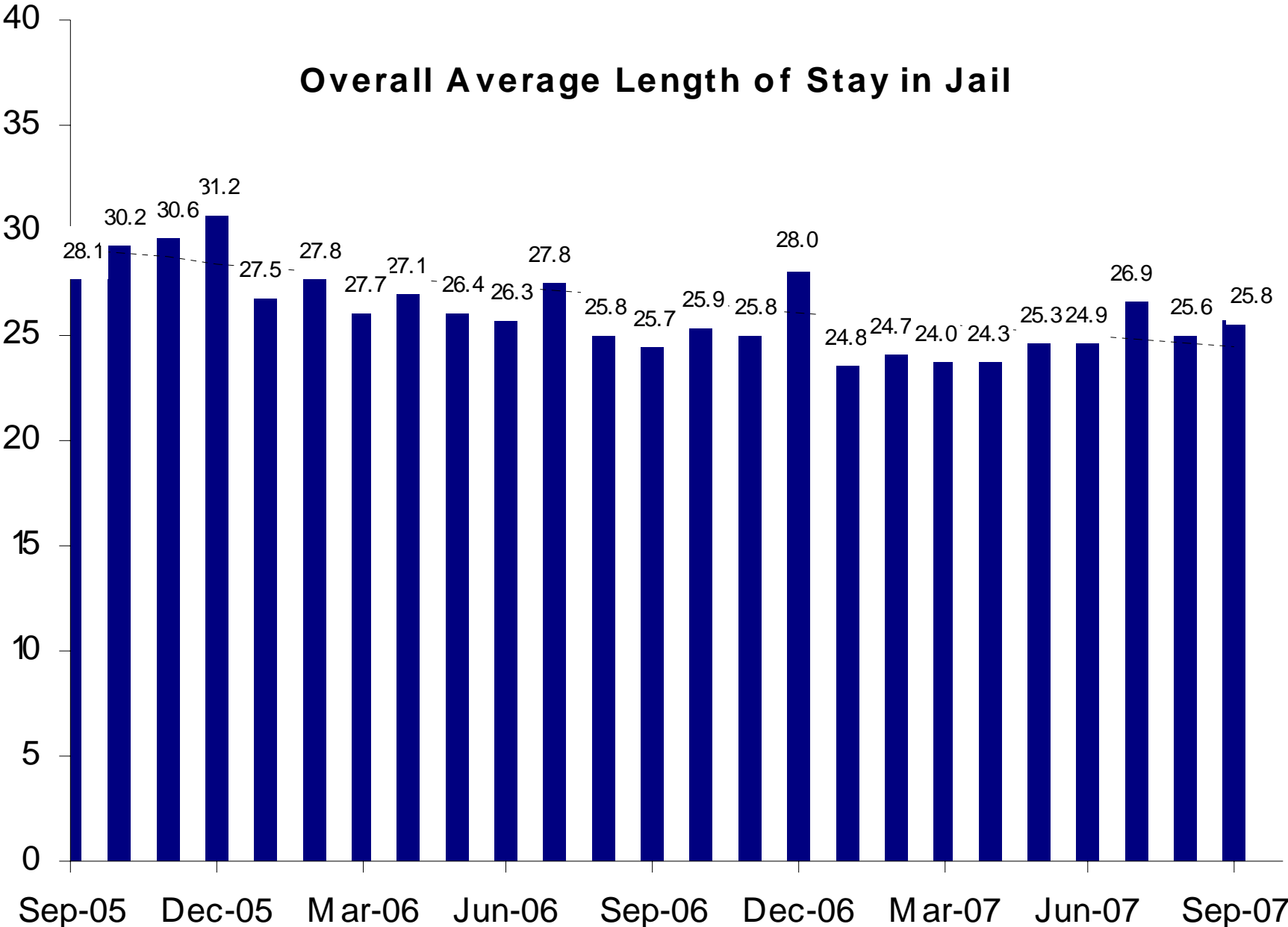
# Average Daily Jail Population



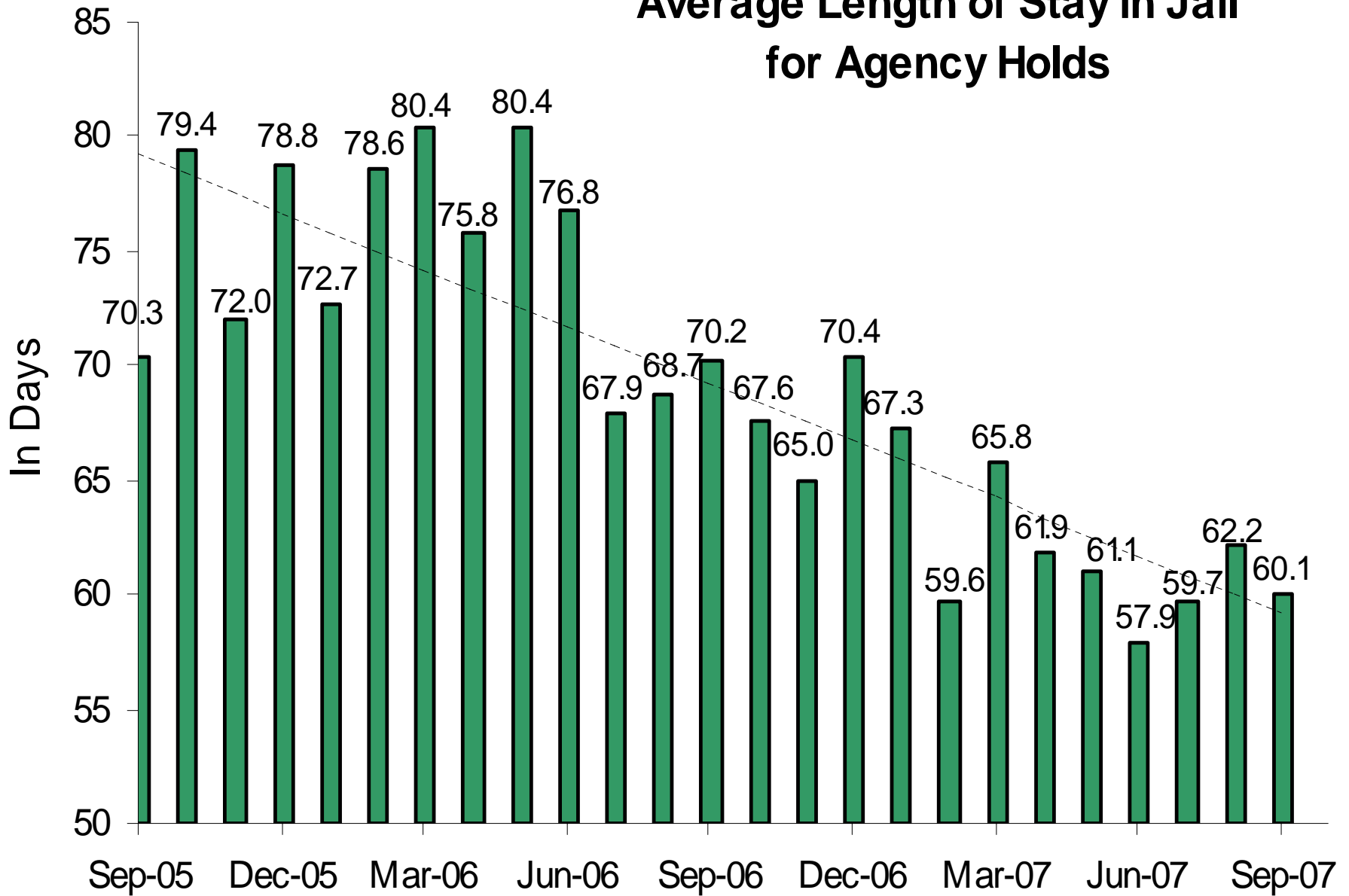
# Average Daily Jail Population by Type



# Overall Average Length of Stay in Jail

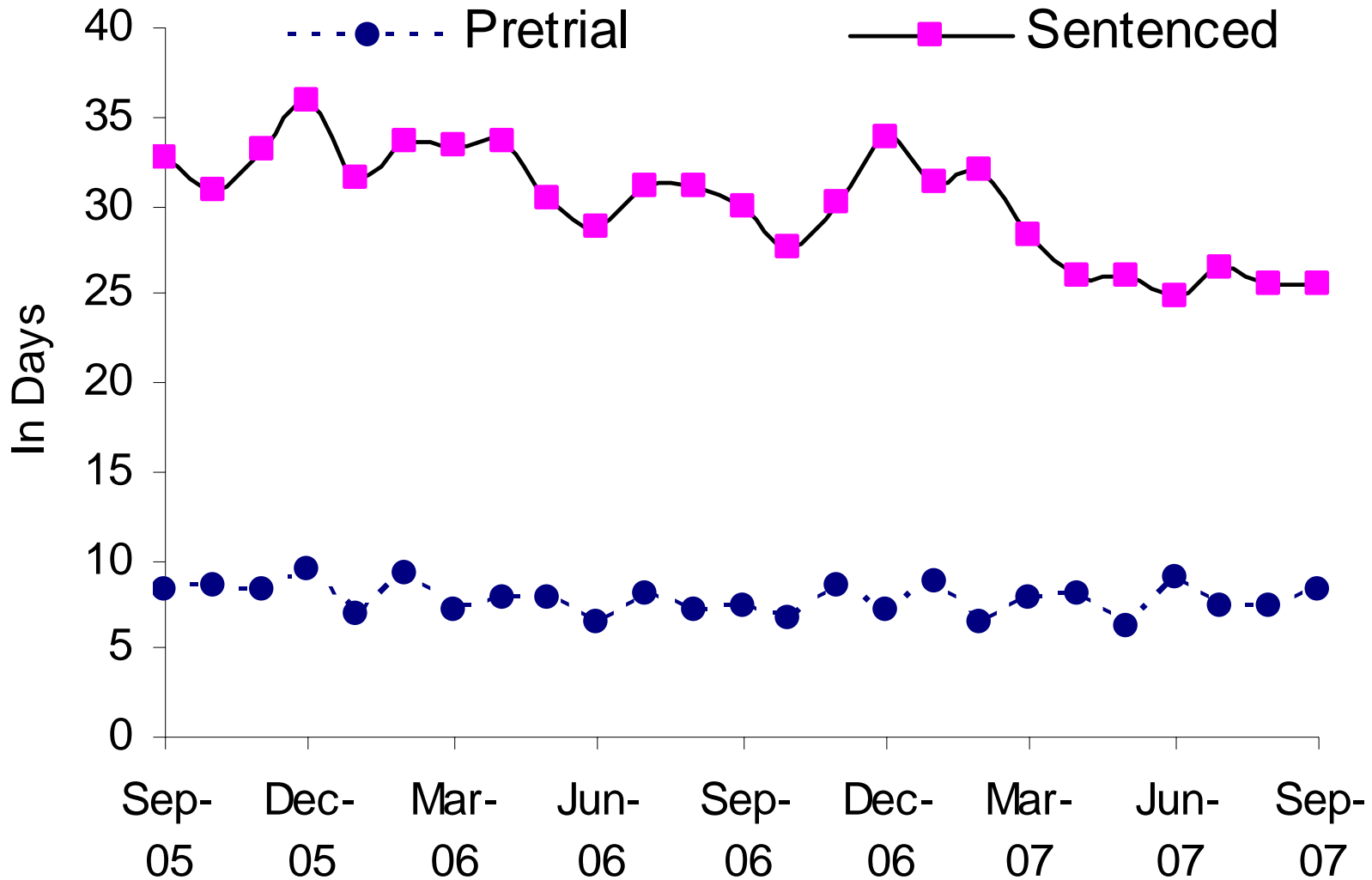


# Average Length of Stay in Jail for Agency Holds



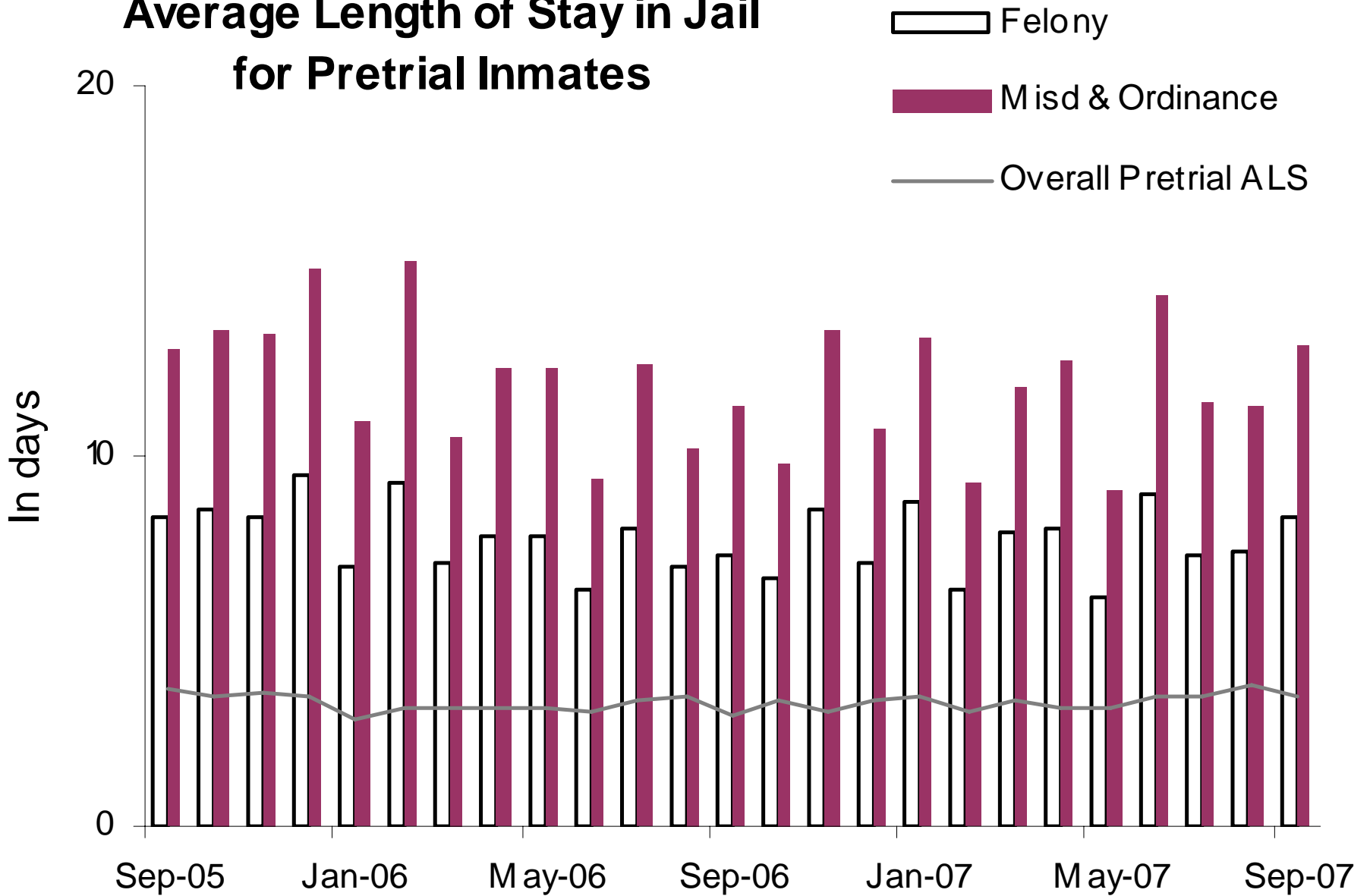
54% Dept of Corrections, 28% Federal agencies, 18% other

# Average Length of Stay in Jail Pretrial vs Sentenced Population

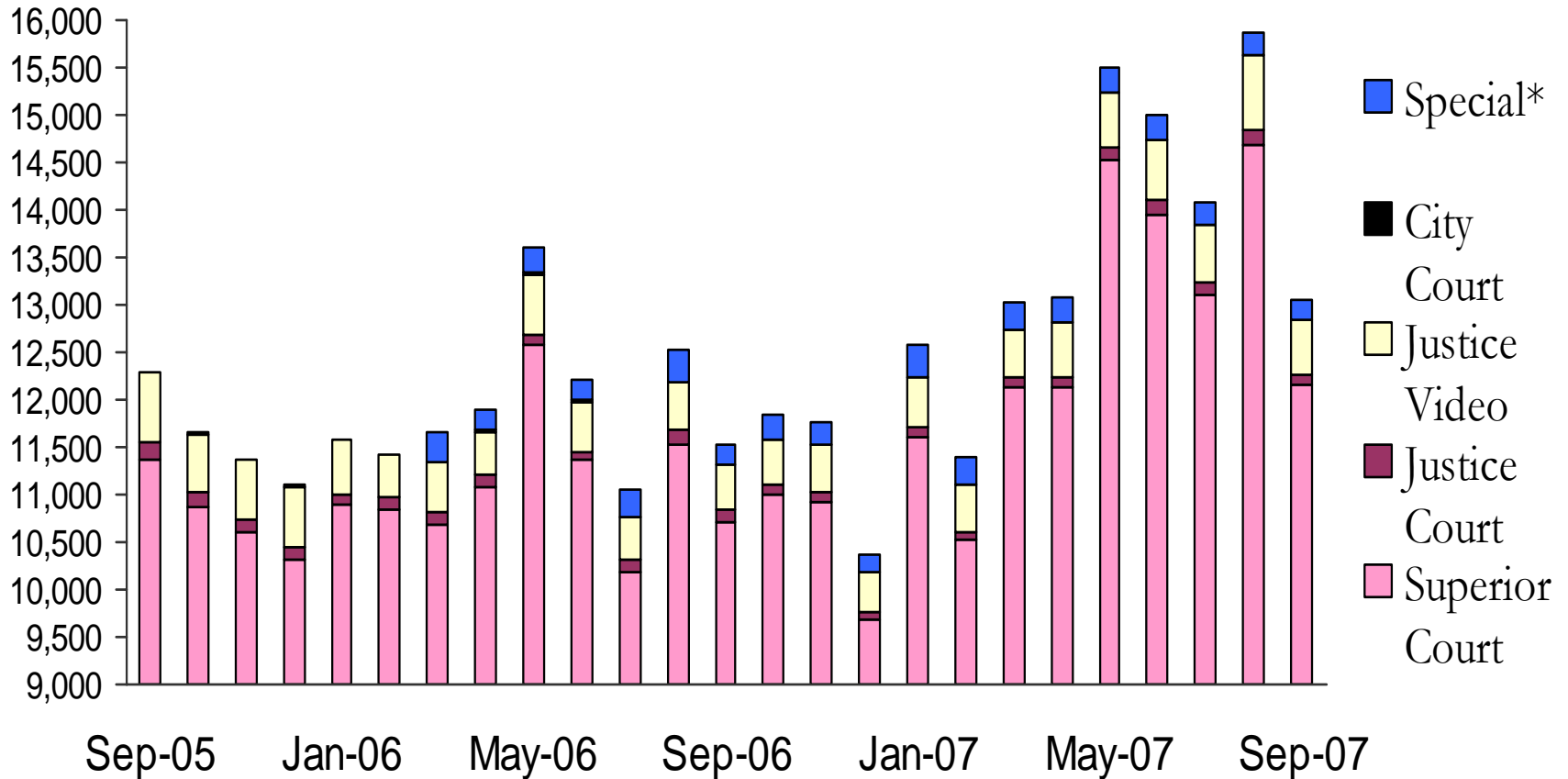




# Average Length of Stay in Jail for Pretrial Inmates



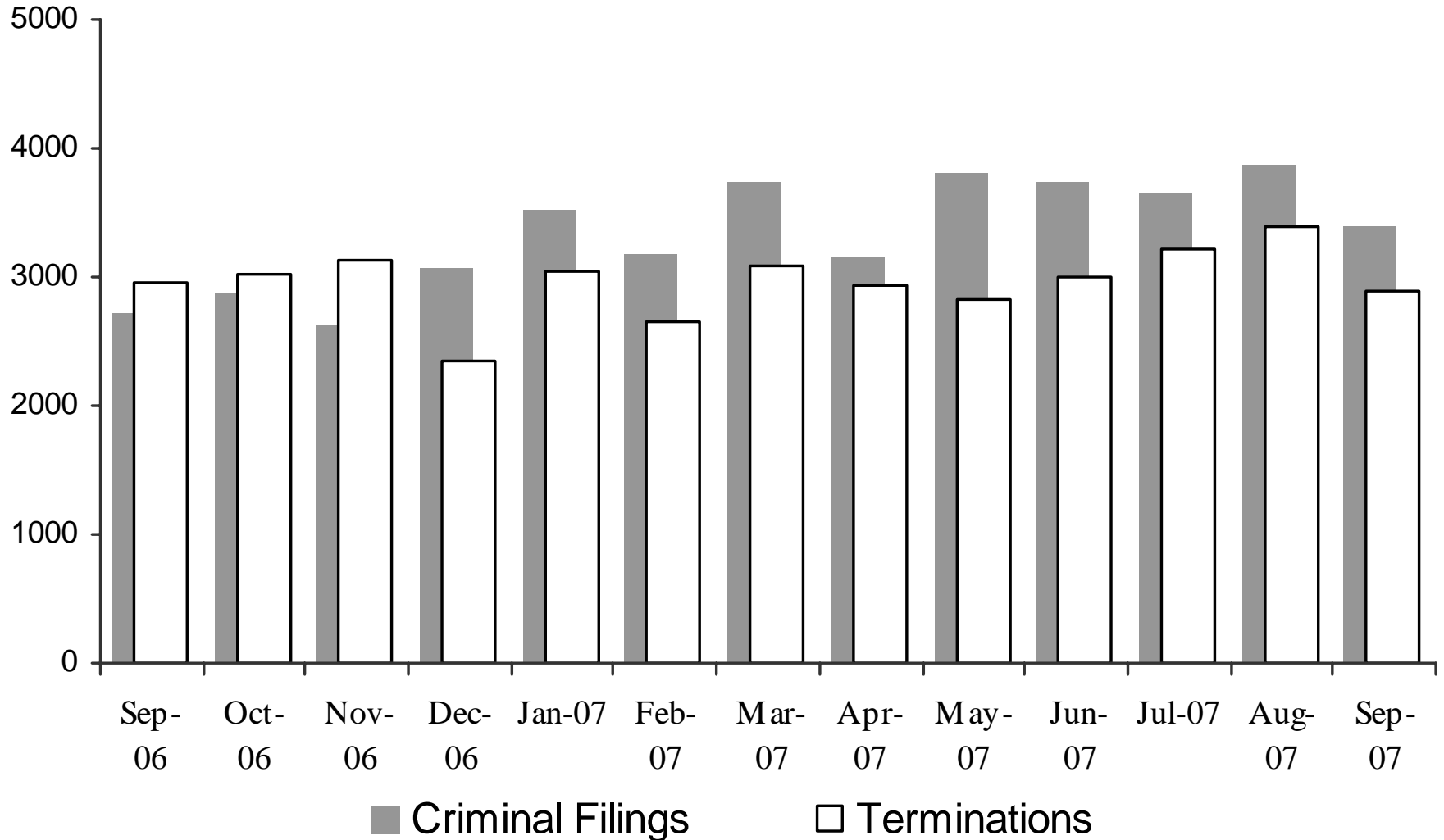
# Sheriff's Office Transports for Inmate Court Appearances



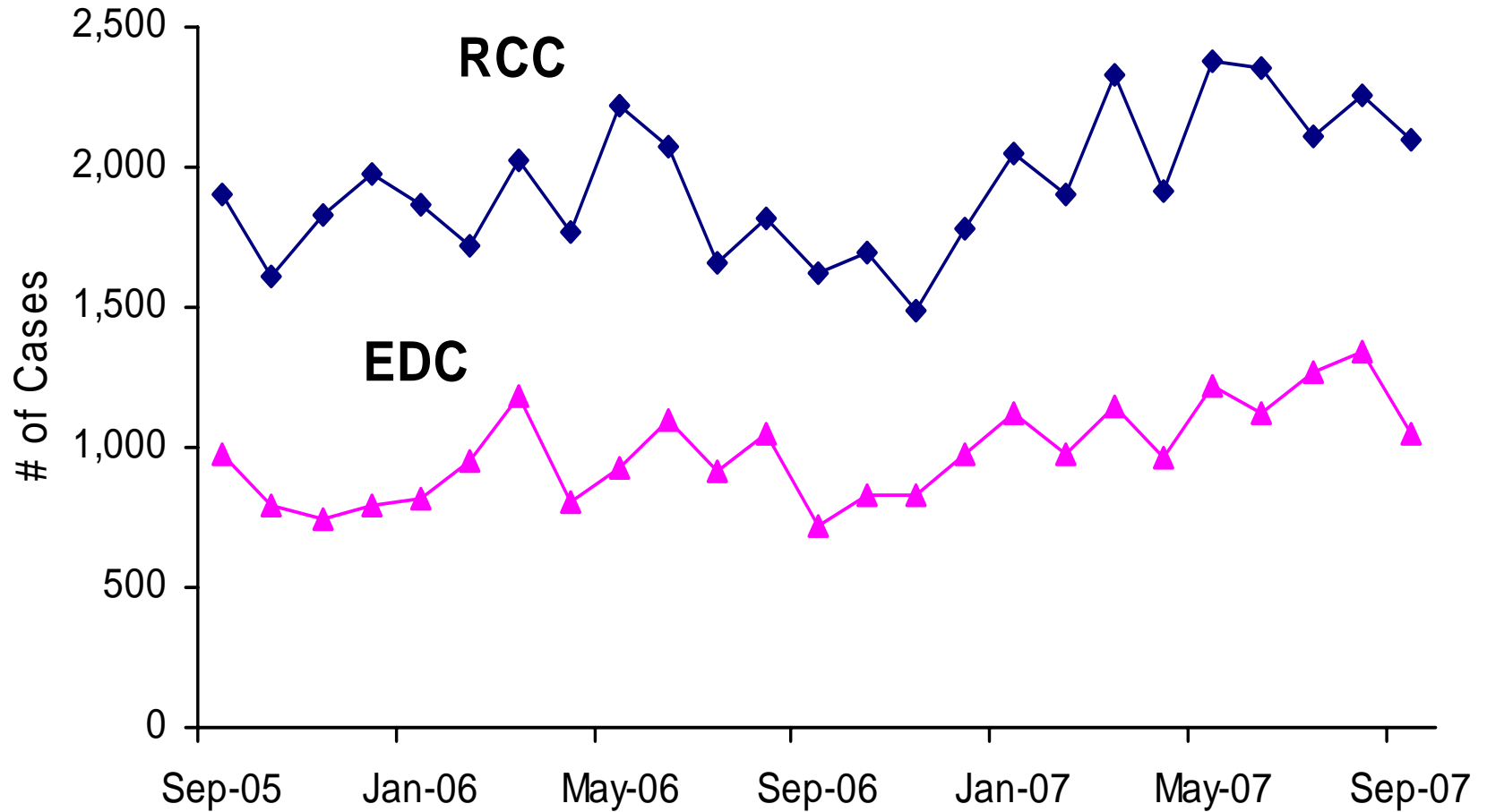
*\*“Special” cases added in March 2006 include Downtown Remands, SEJD Remands, and SEJD Unscheduled.*

# Superior Court Filings and Terminations

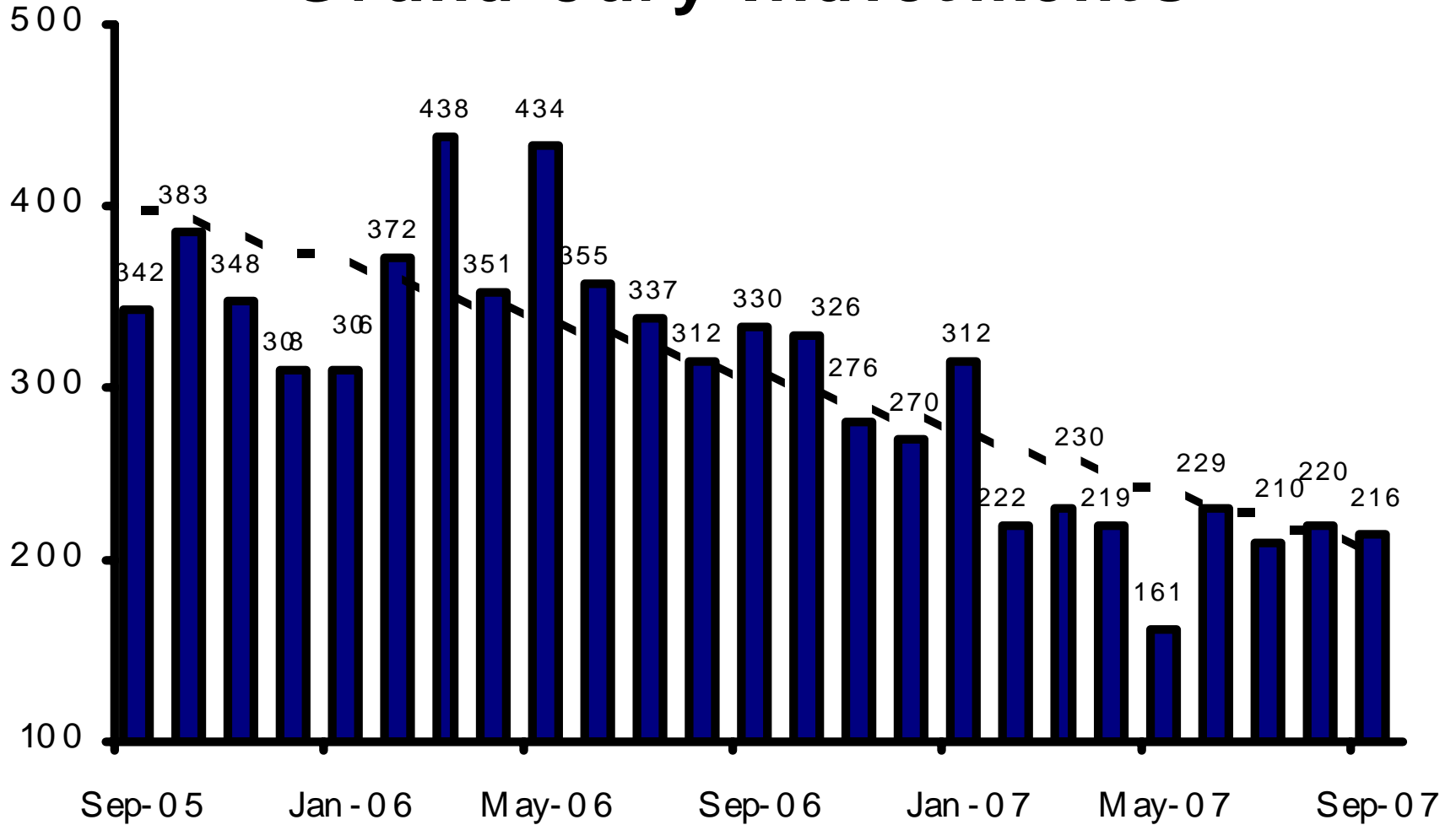
Direct Filing began in May 2002



# Direct Complaints into Superior Court

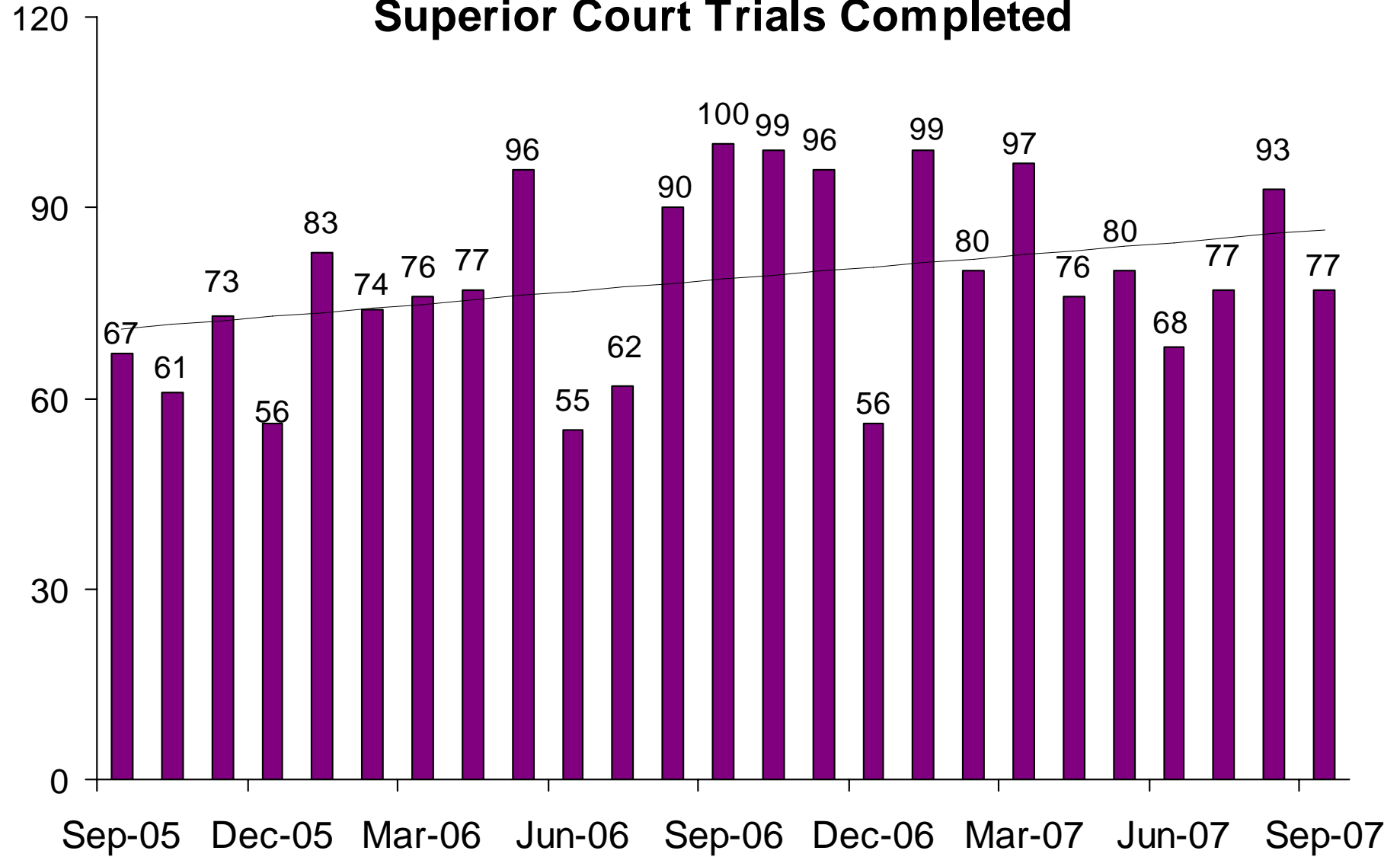


# Grand Jury Indictments

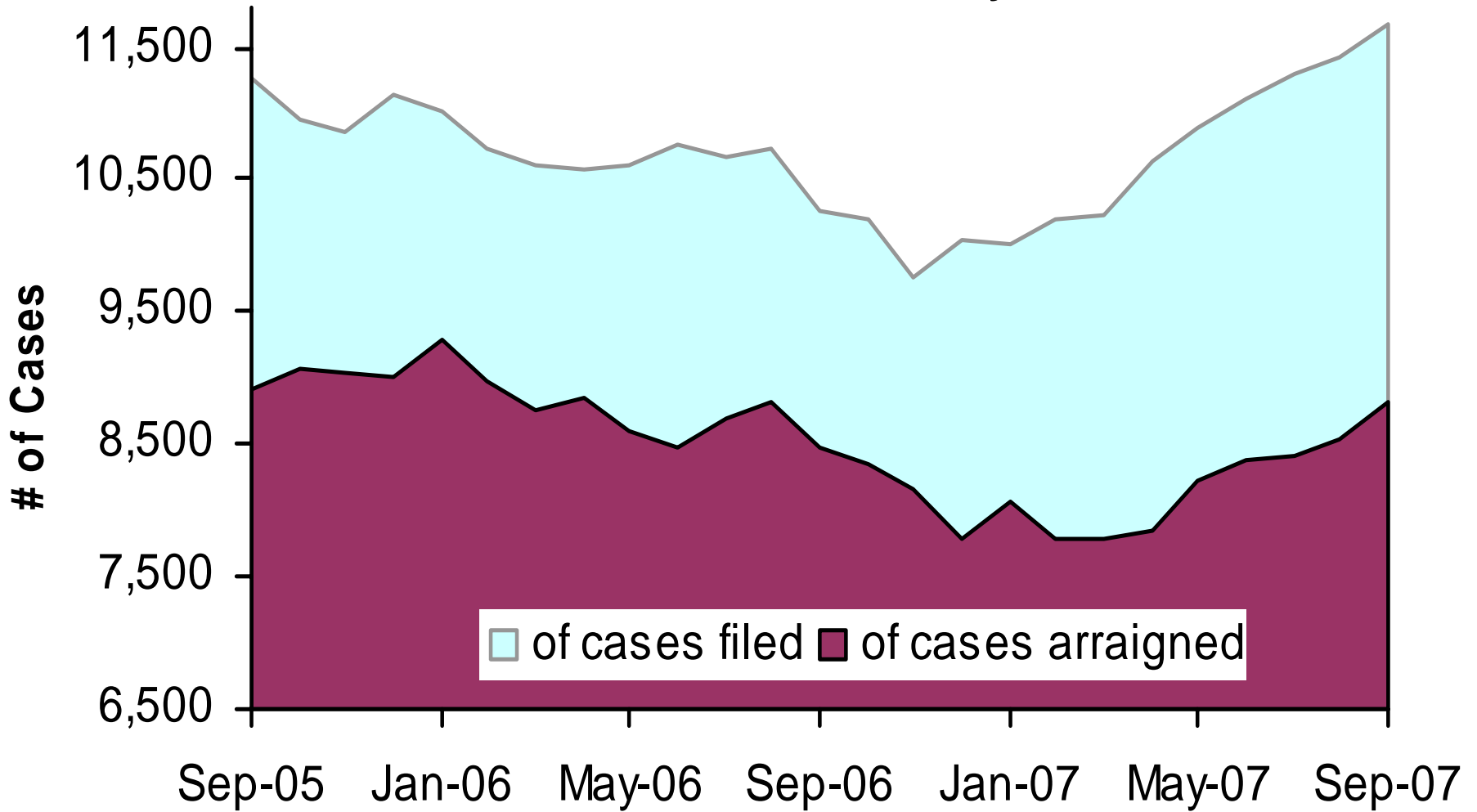


These numbers do not include notices of supervening indictments, non-EDC direct complaints, and juvenile direct complaints.

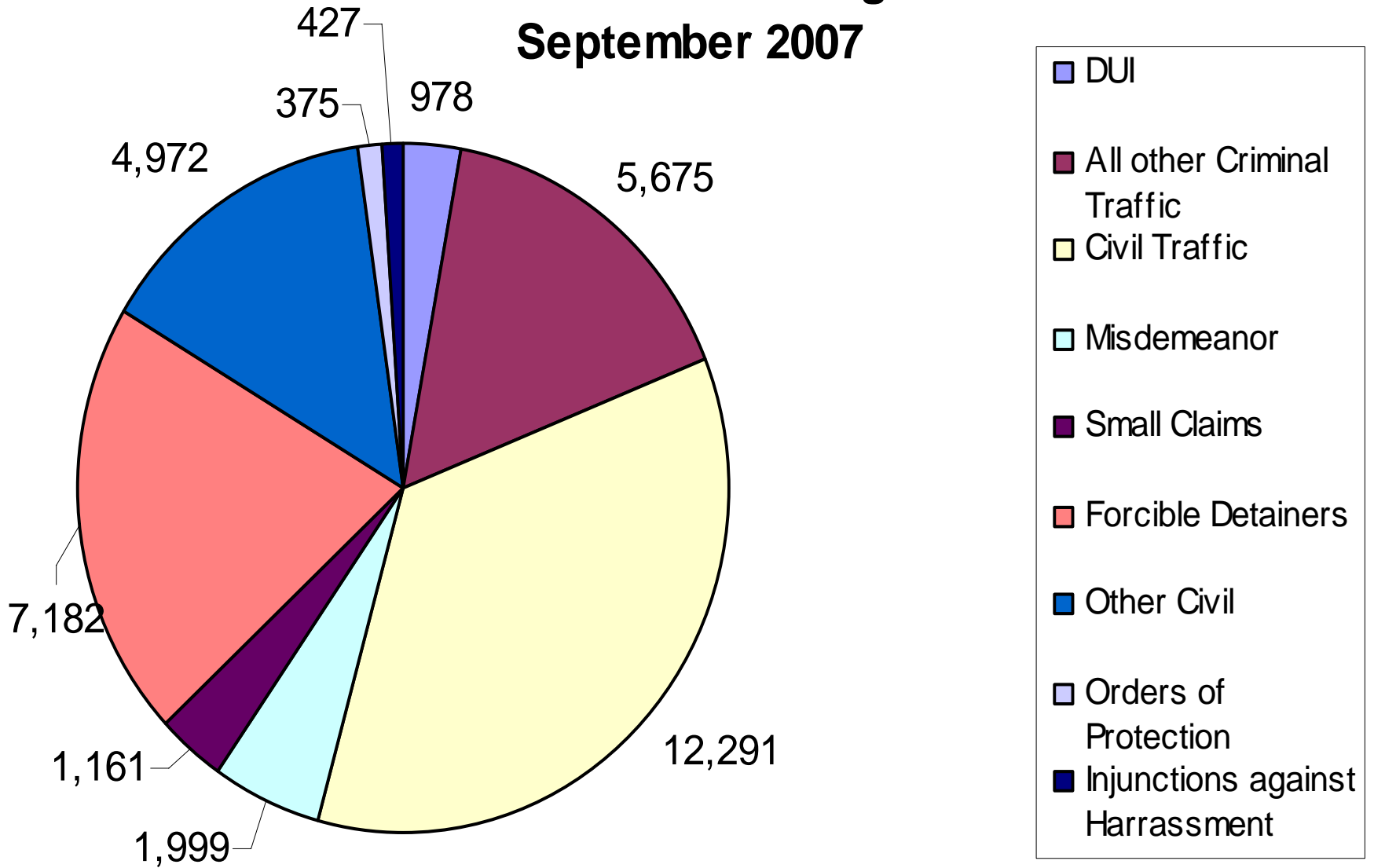
# Superior Court Trials Completed



# Active Pending Criminal Case Inventory

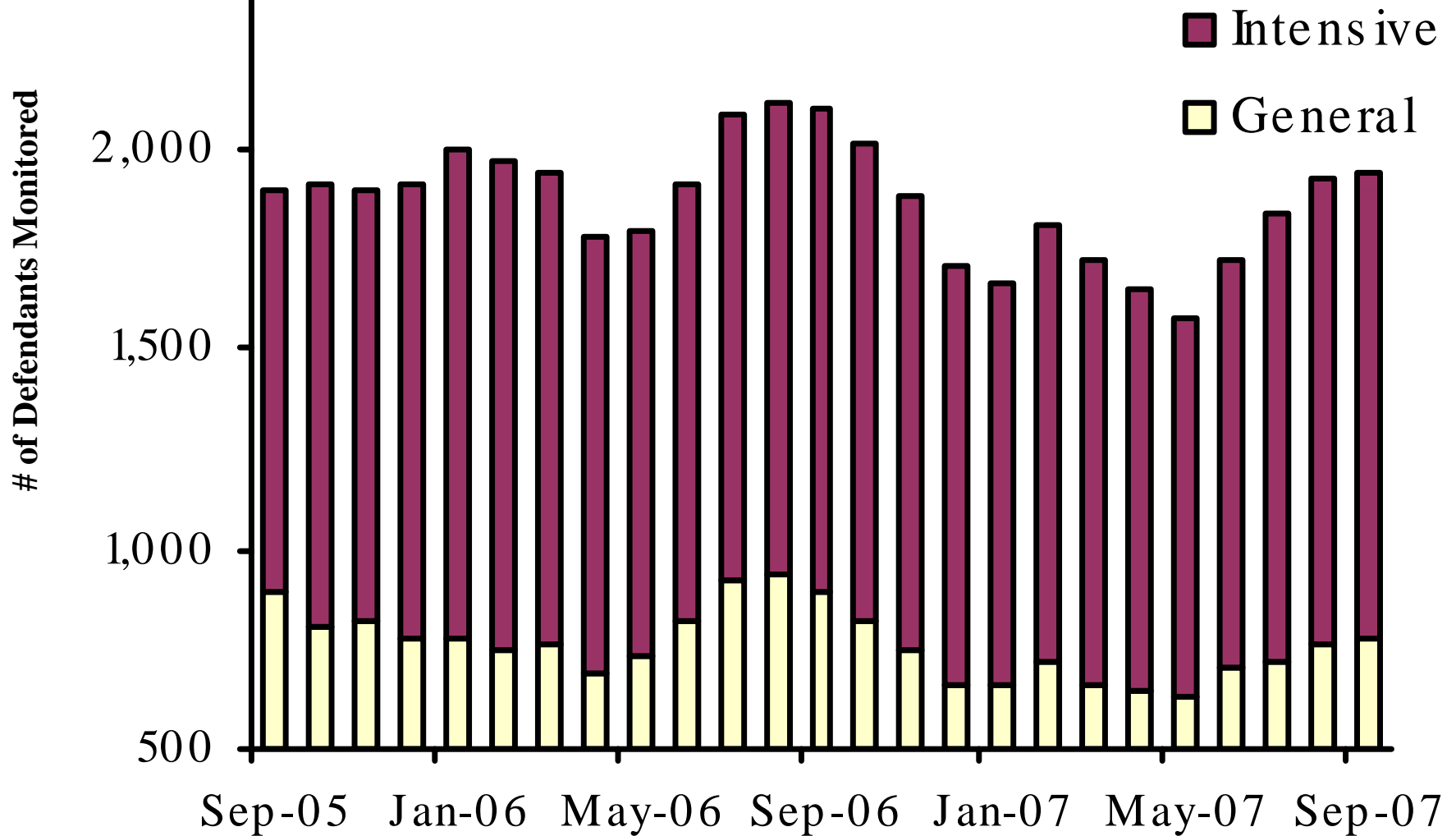


# Justice Court Filings September 2007

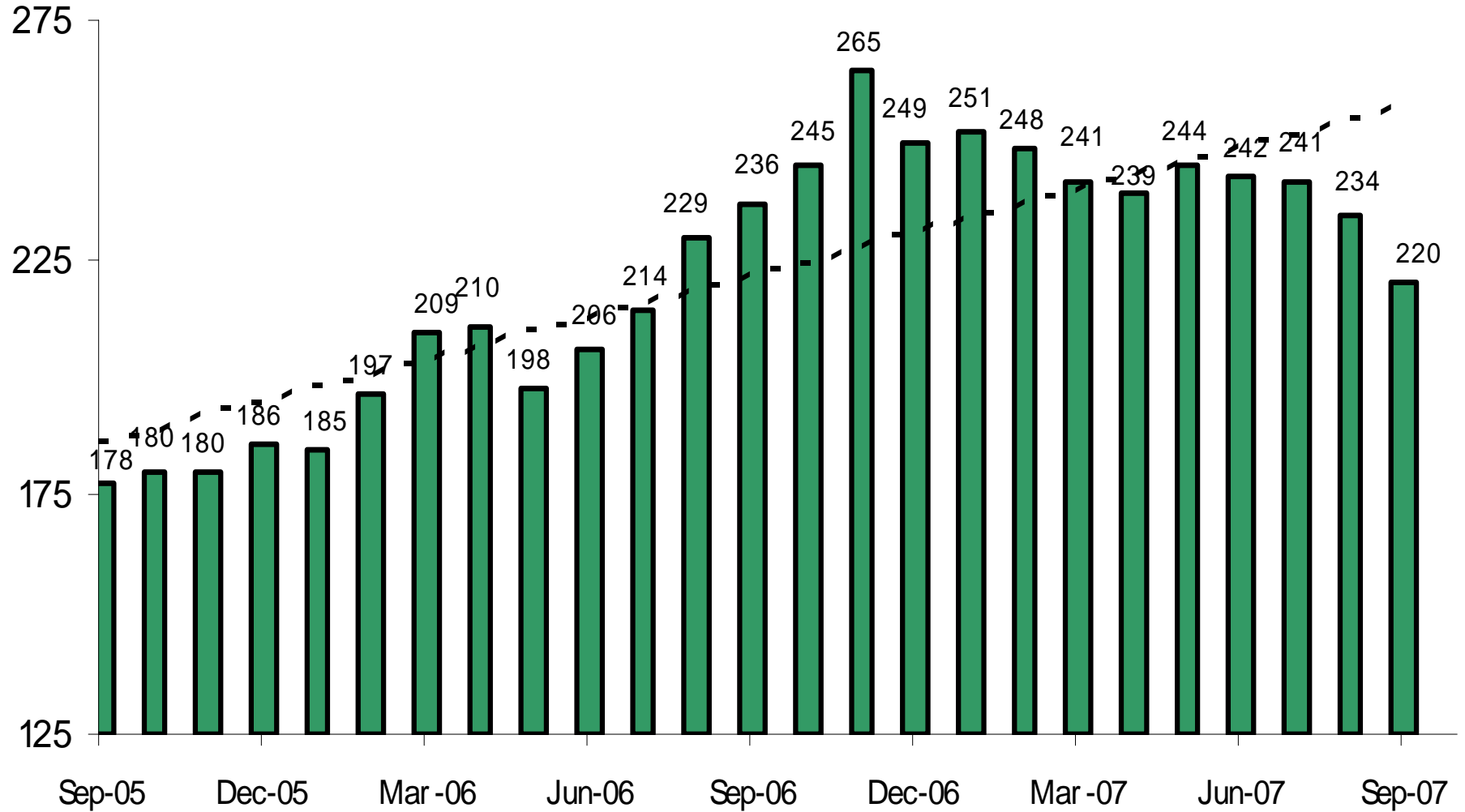




# Pretrial Supervision Defendant Monitoring Unit

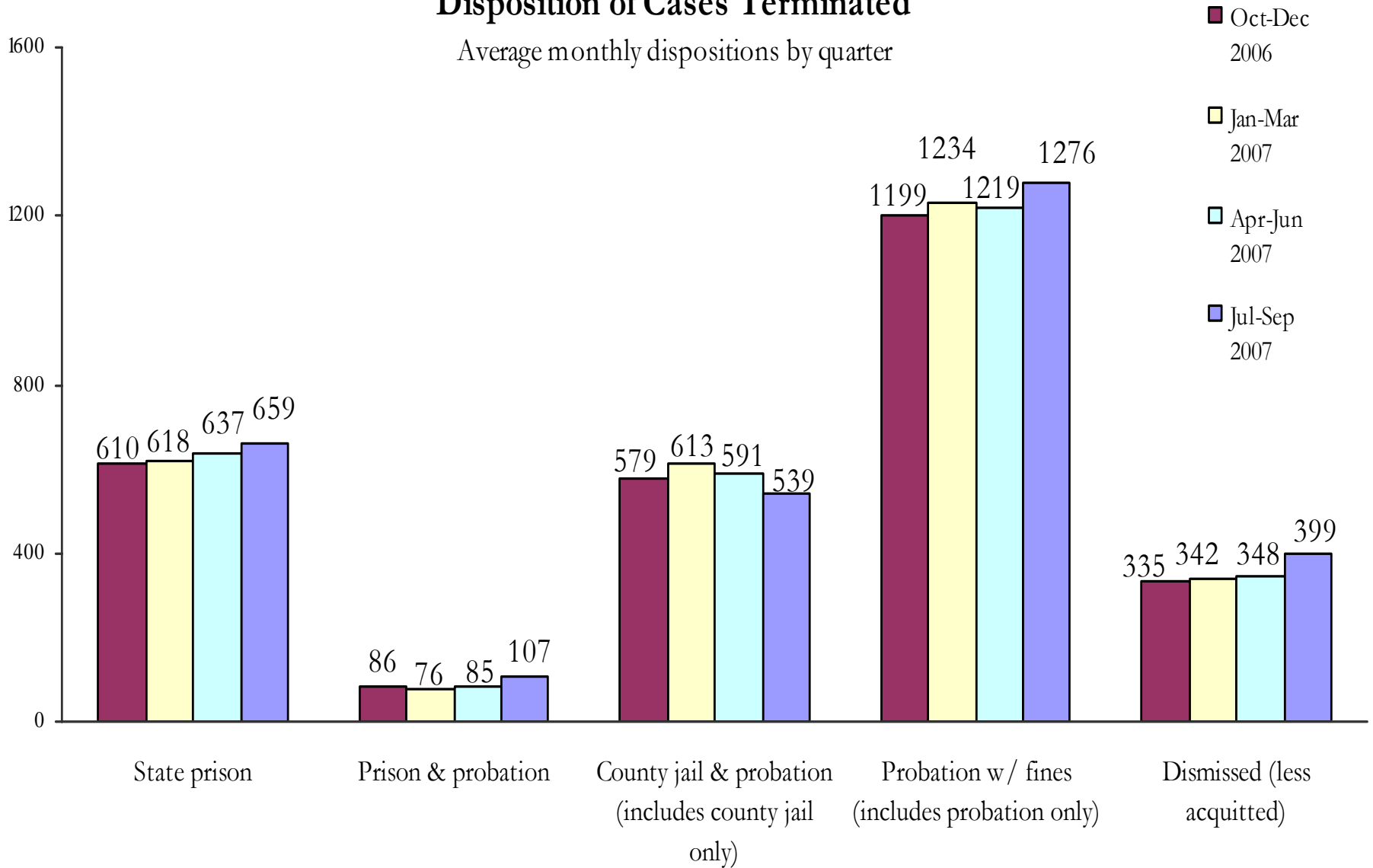


# Pretrial Supervision Defendants on Electronic Monitoring

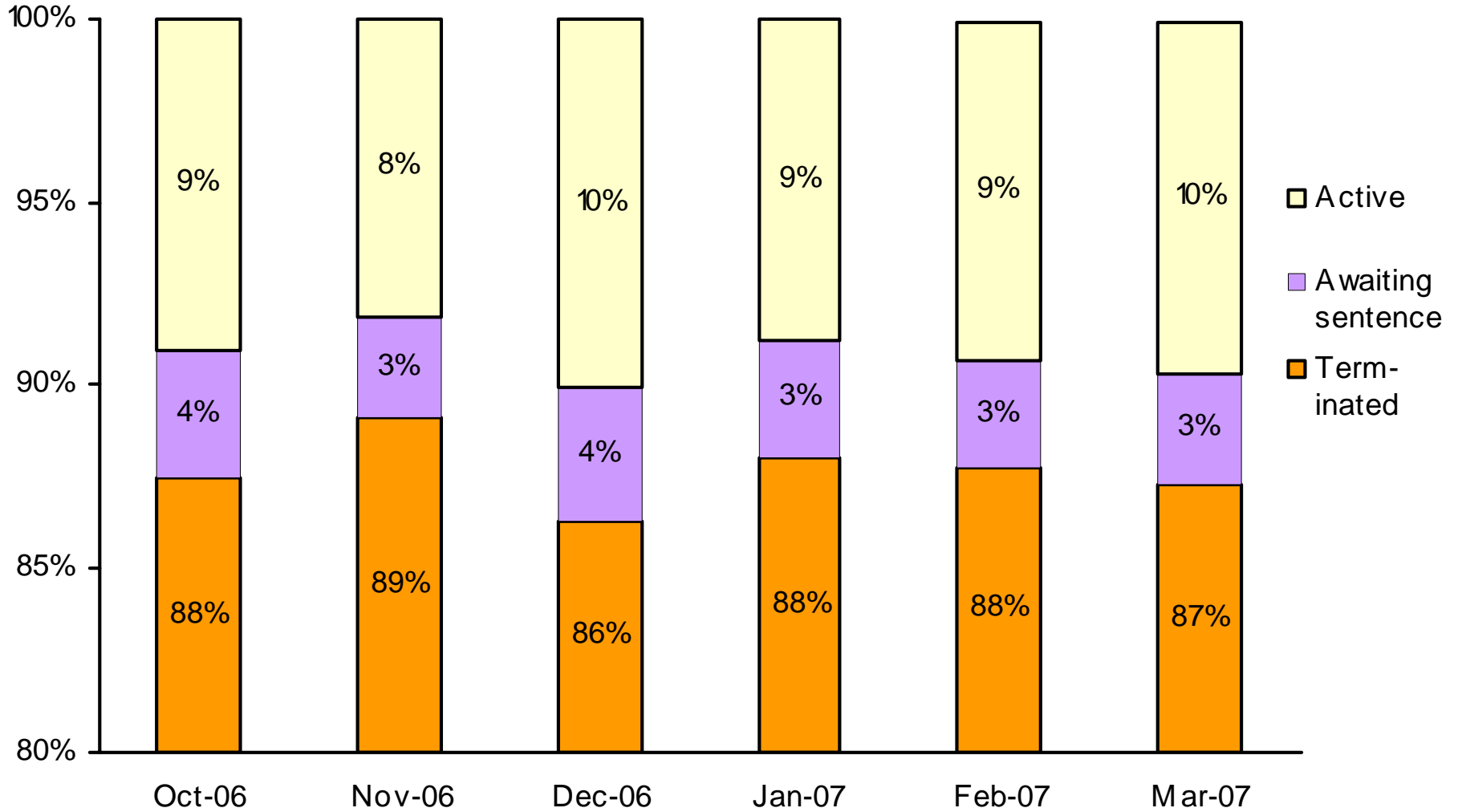


# Disposition of Cases Terminated

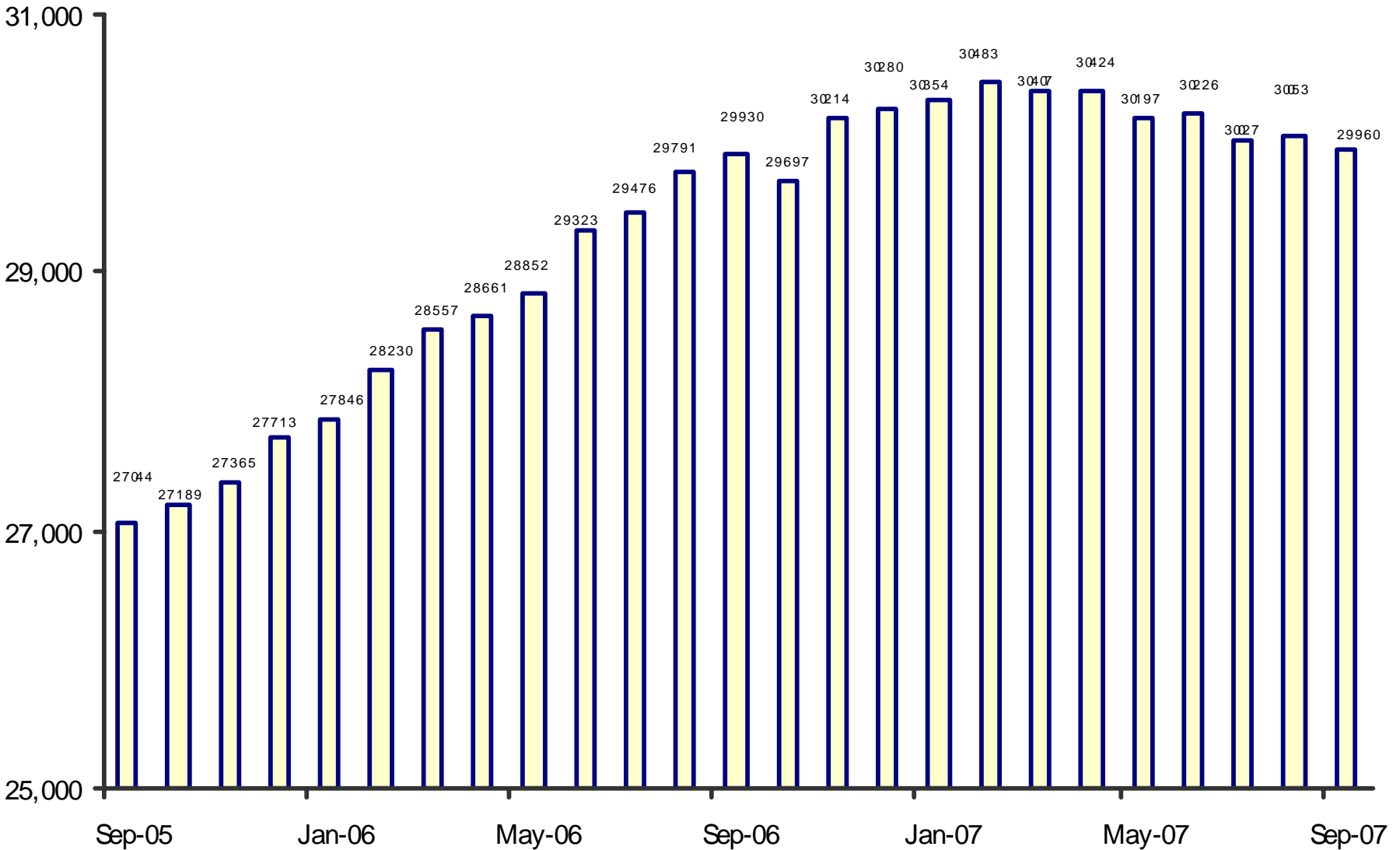
Average monthly dispositions by quarter



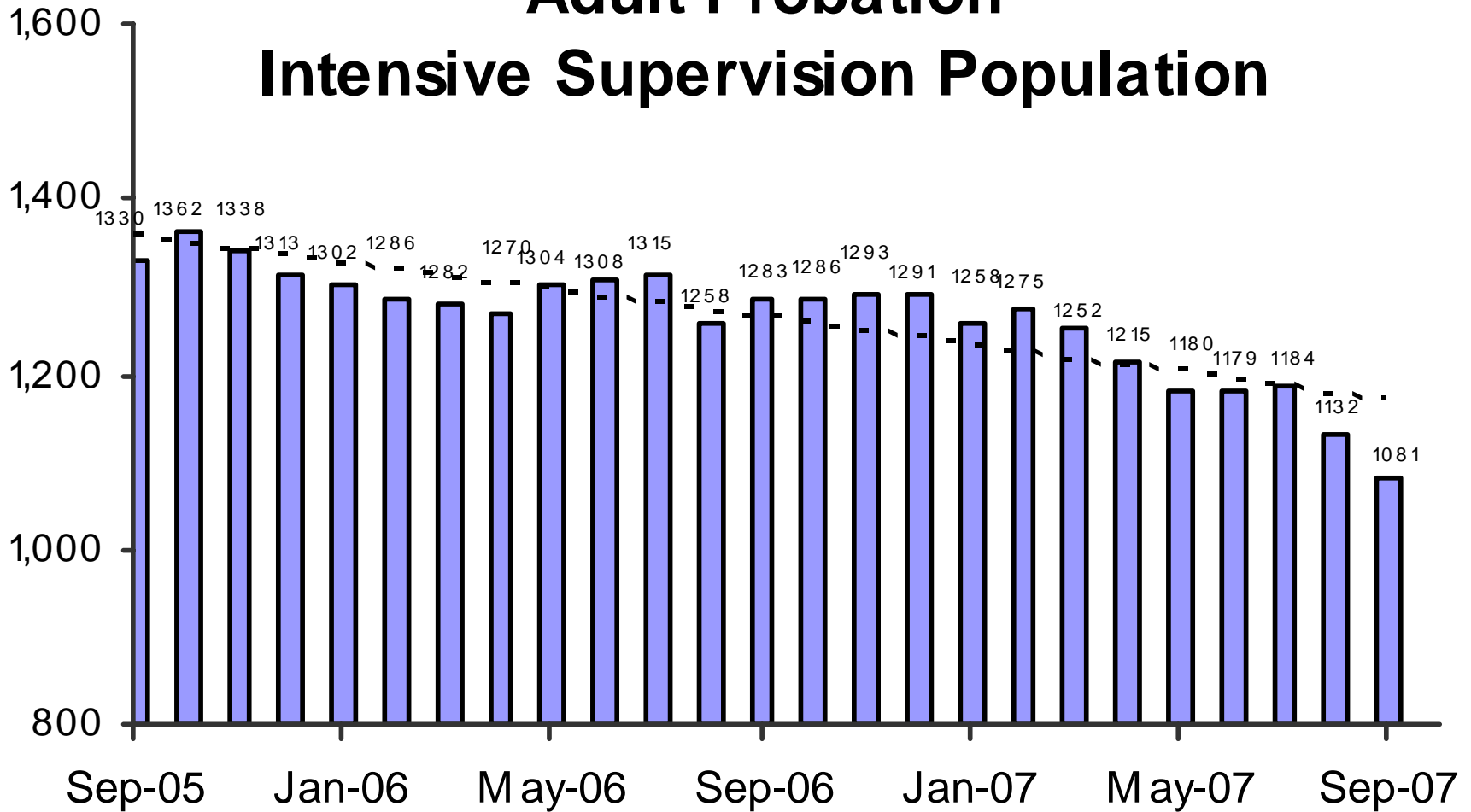
## Status of Cases After 180 Days



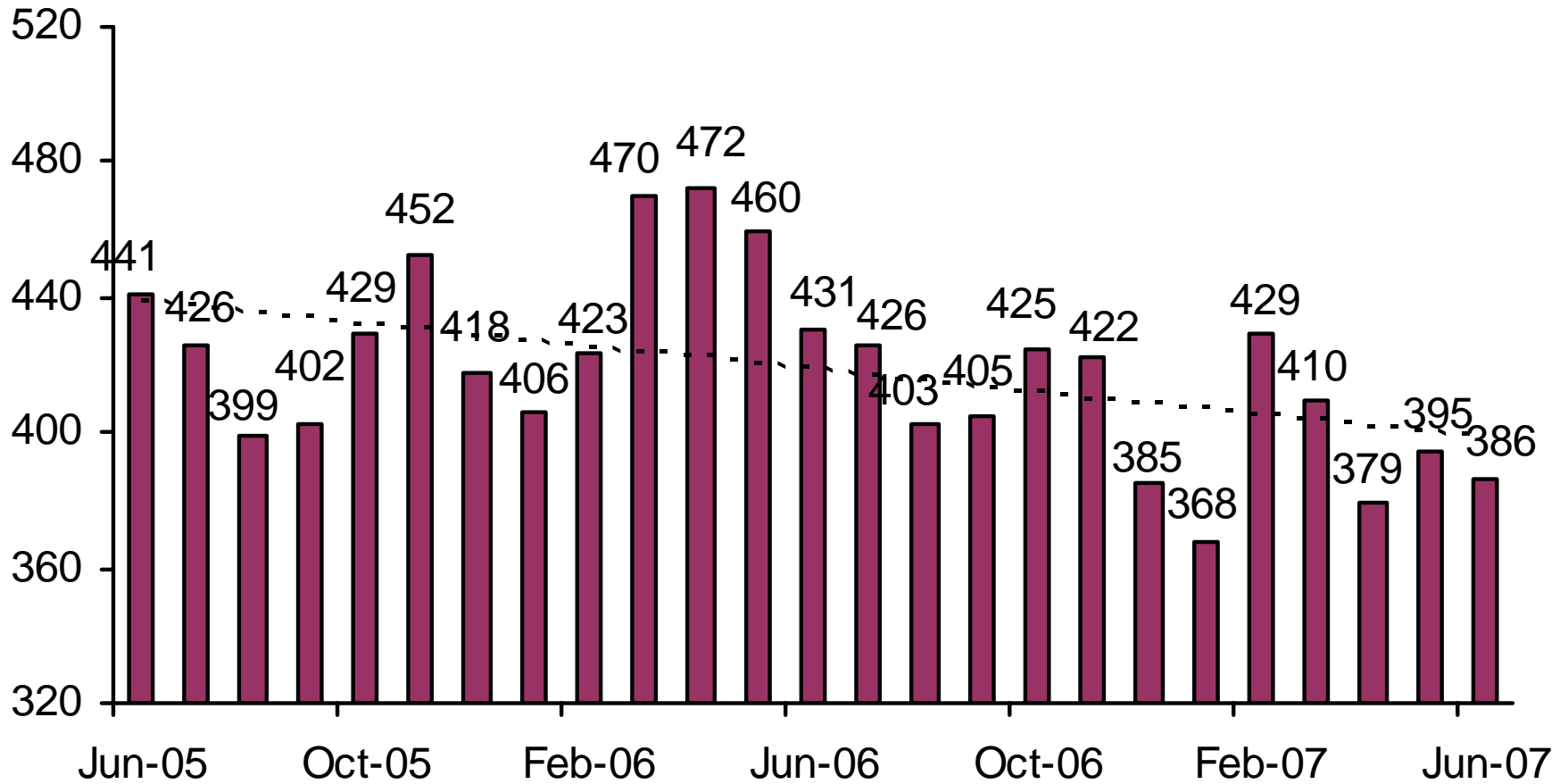
# Adult Probation Standard Supervision Population



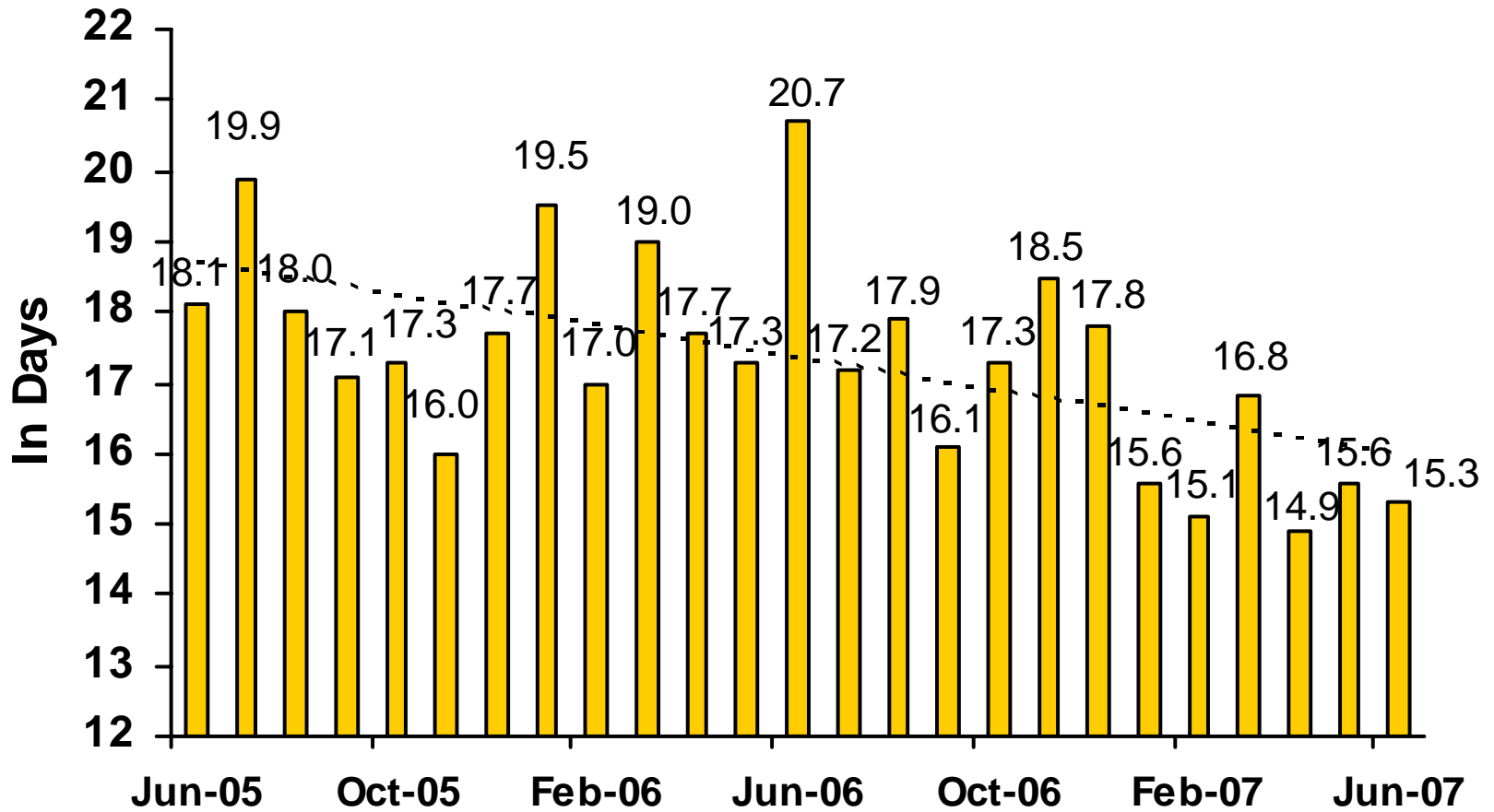
# Adult Probation Intensive Supervision Population



# Juvenile Detention Average Daily Population

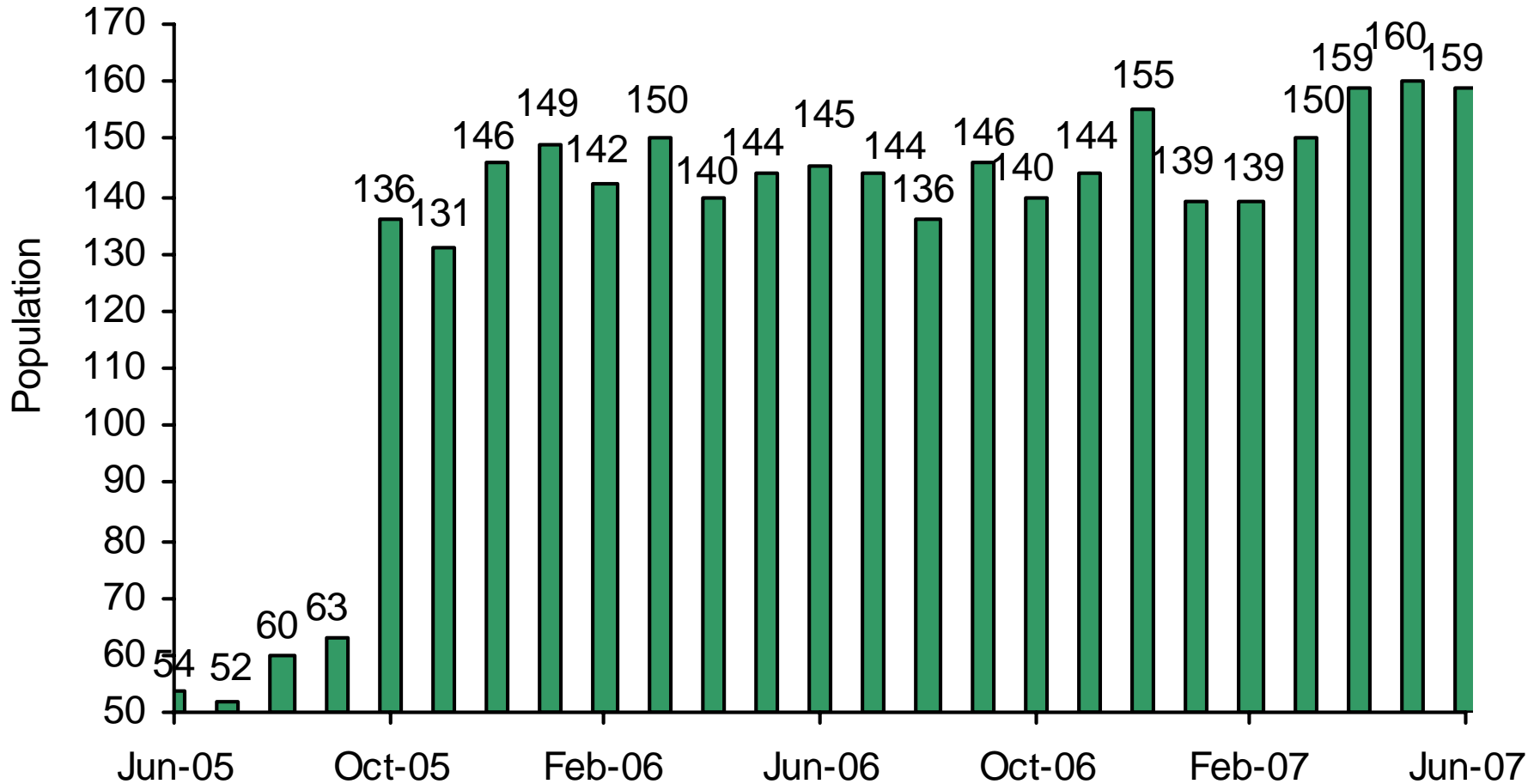


# Juvenile Detention Average Length of Stay



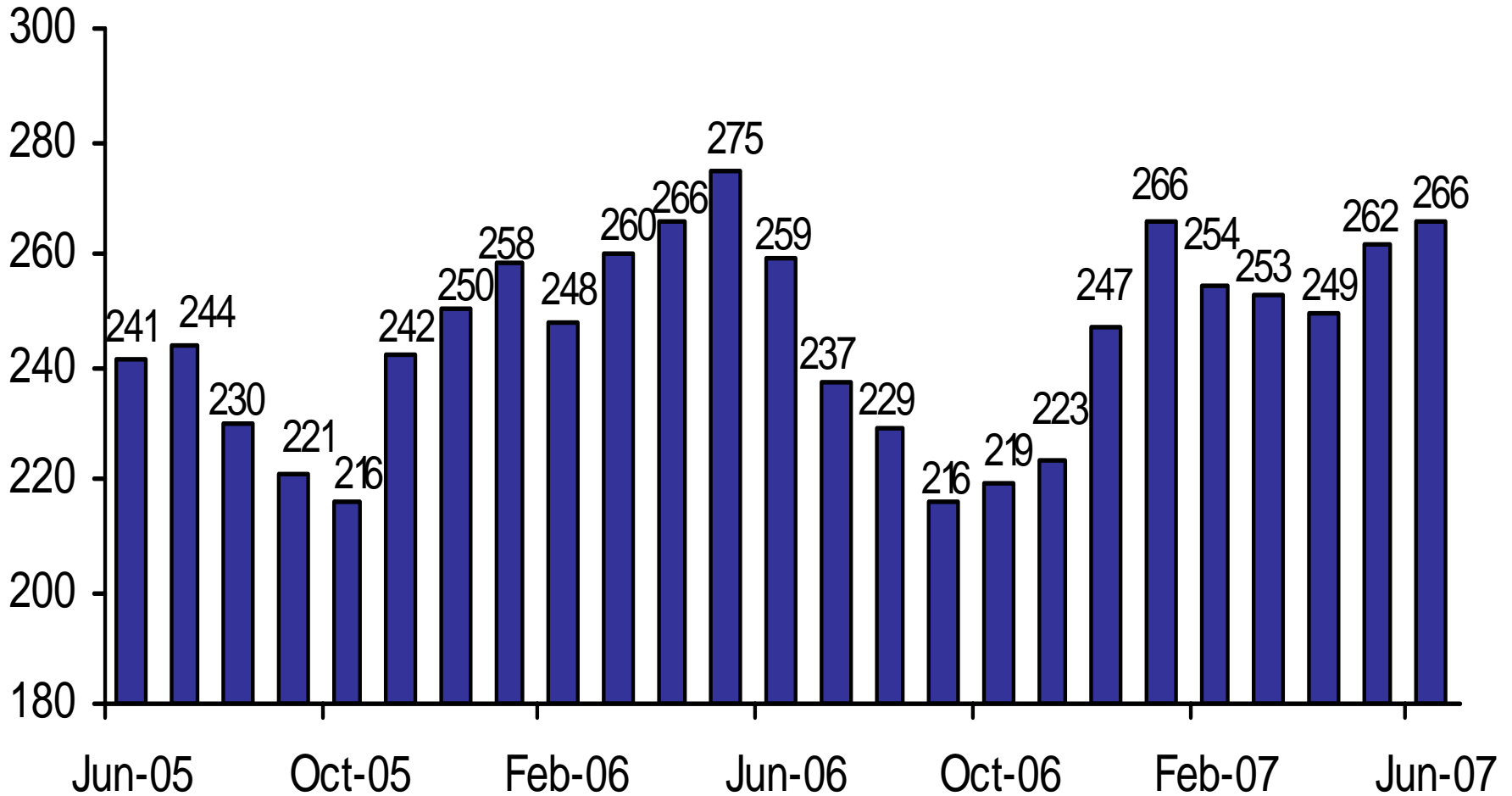


# Juvenile Electronic Monitoring



The increase beginning in October 2005 is due to more accurate data collection, including counting Intensive Probation use in addition to Standard use.

# Juvenile Home Detention



# Juvenile Probation

■ # on standard probation ■ # on intensive probation

