



# Maricopa County

Criminal Justice System

## ***CRIMINAL JUSTICE SYSTEM Monthly Changes – September 2014***

### **Adult Jail Incarceration**

- **Bookings decreased** from 9,197 in August to 8,445 in September.
- **Releases decreased** from 8,960 in August to 8,597 in September.
- The **Average Daily Population (ADP) increased** from 8,103 in August to 8,173 in September.
- The **Pretrial ADP decreased** from 6,145 in August to 6,135 in September.
- The **Sentenced ADP increased** from 1,756 in August to 1,800 in September.
- The **Agency Hold ADP increased** from 170 in August to 194 in September.
- **Overall Average Length of Stay (ALOS) at release increased** from 25.7 in August to 29.8 in September.
- The **ALOS in days for Pretrial remained the same** from August to September at 8.5.
- The **ALOS in days for Sentenced increased** from 24.7 in August to 25.4 in September.
- The **ALOS in days for Agency Holds increased** from 64 in August to 77 in September.

### **Superior Court Filings & Case Processing**

- **New Criminal Case Filings decreased** from 2,665 in August to 2,542 in September.
- **Case Terminations increased** from 2,522 in August to 2,982 in September.
- The resulting **Clearance Rate** was 117%.
- The **Active Pending Case Inventory decreased** from 11,981 in August to 11,835 in September.
- **Regional Court Center filings increased** from 1,382 in August to 1,393 in September.
- **Early Disposition Court filings decreased** from 998 in August to 892 in September.
- The **Number of Trials Completed increased** from 61 in August to 70 in September.
- The **Trial Rate** was 2.8%.

### **Justice Court Filings**

- **DUI Filings increased** from 611 in August to 949 in September.
- All other **Criminal Traffic Filings increased** from 3,134 in August to 3,409 in September.
- **Civil Traffic Filings increased** from 9,145 in August to 10,226 in September.
- **Eviction Action Filings decreased** from 5,988 in August to 5,900 in September.
- **Total Filings increased** from 24,709 in August to 27,232 in September.

### **Adult Probation**

- **Pretrial Standard Supervision decreased** from 2,007 in August to 1,911 in September.
- **Pretrial Electronic Monitoring decreased** from 665 in August to 625 in September.
- **Adult Standard Probation Supervision increased** from 22,048 in August to 22,167 in September.
- **Adult Intensive Probation Supervision increased** from 915 in August to 955 in September.
- **Adult Unsupervised Probation Supervision decreased** from 5,656 in August to 5,582 in September.

### **Juvenile Detention and Probation**

- The **Average Daily Detention Population decreased** from 167 in August to 165 in September.
- The **ALOS in juvenile detention increased** from 12.3 in August to 13.2 in September.
- **Juvenile Standard Probation increased** from 1,959 in August to 1,989 in September.
- **Juvenile Intensive Probation decreased** from 210 in August to 202 in September.
- **Monthly commitments to Arizona Department of Juvenile Corrections decreased** from 26 in August to 19 in September.



# Maricopa County

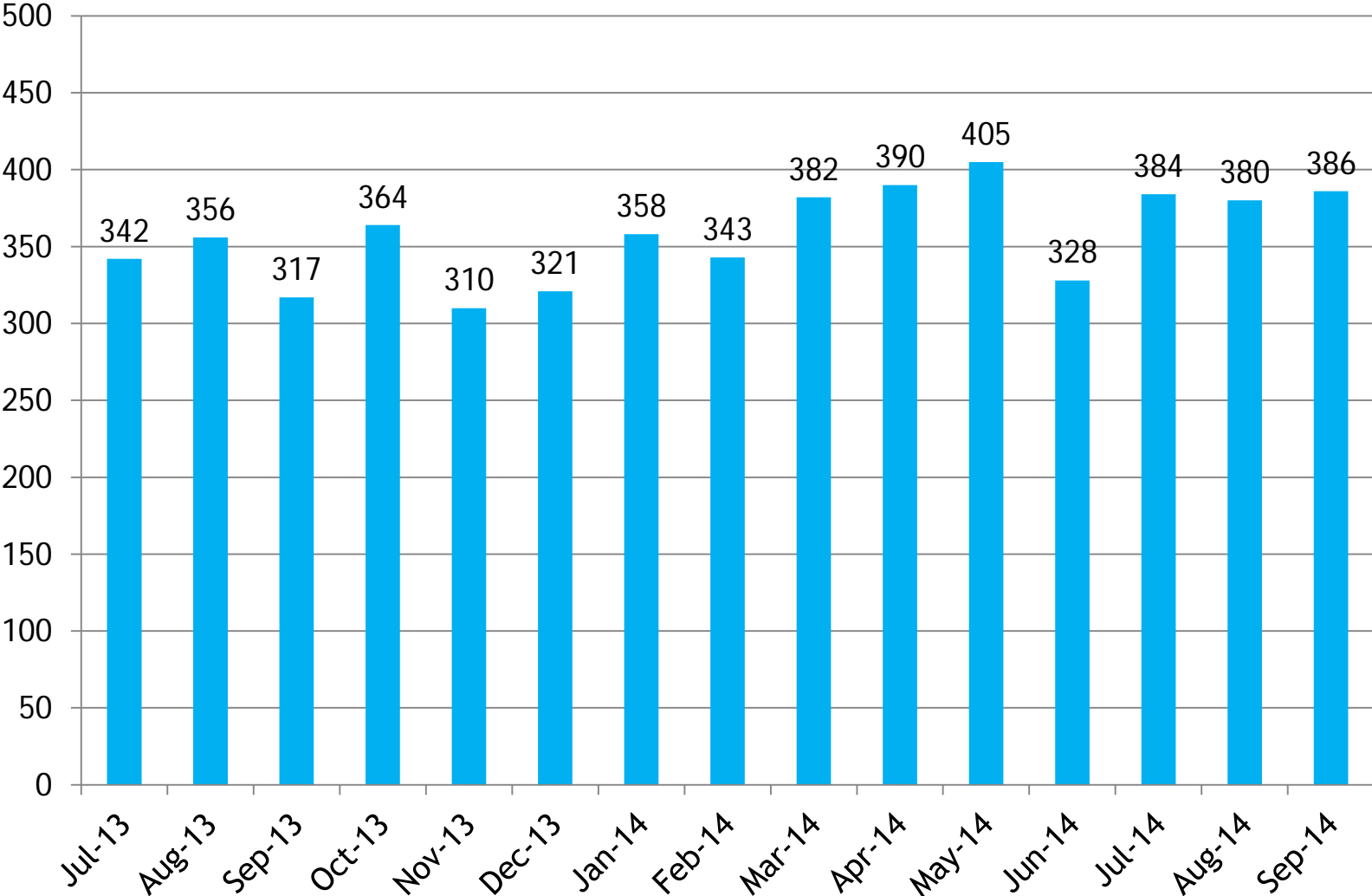
Criminal Justice System

## Monthly Performance Report for August 2014

	Annual Averages*				Year-to-Date Avgs			Current Month		
	FY 2011	FY 2012	FY 2013	FY 2014	FY 2014	FY 2015	% Change	Sep-13	Sep-14	% Change
<b>Sheriff's Office</b>										
Bookings (monthly avg)	9,228	8,818	8,993	8,983	9,211	8,816	-4%	8,999	8,445	-6%
Releases (monthly avg)	9,237	8,766	8,979	8,981	9,151	8,855	-3%	8,900	8,597	-3%
Avg Daily Population	7,295	7,495	8,098	8,066	8,278	8,126	-2%	8,310	8,173	-2%
Avg Length of Stay in days (at release)	24.4	25.0	25.7	27.1	26.8	28.1	5%	27.7	29.8	8%
Avg Length of Stay in days (in custody)	24.1	26.0	27.4	27.3	27.6	28.3	3%	27.7	29.0	5%
<b>Superior Court</b>										
Filings	2,698	2,756	2,524	2,782	2,952	2,658	-10%	2,861	2,542	-11%
Terminations	2,914	2,749	2,601	2,611	2,622	2,887	10%	2,630	2,982	13%
Clearance Rate	108%	100%	103%	94%	89%	109%	23%	92%	117%	27%
Active Pending Inventory	10,124	10,902	11,413	11,893	11,743	11,852	1%	11,870	11,835	0%
Trials Completed	48	48	45	61	71	61	-14%	67	70	4%
Trial Rate	1.8%	1.7%	1.8%	2.2%	2.4%	2.3%	-4%	2.3%	2.8%	22%
<b>Justice Courts Filings</b>										
DUI	841	751	750	738	865	788	-9%	1,019	949	-7%
All other Criminal Traffic	3,685	3,483	3,324	3,142	3,496	3,249	-7%	3,337	3,409	2%
Civil Traffic	10,856	10,201	9,892	9,247	9,887	9,460	-4%	9,599	10,226	7%
Misdemeanor	1,631	1,689	1,463	1,207	1,525	1,392	-9%	1,499	1,404	-6%
Small Claims	1,154	941	788	862	794	794	0%	705	823	17%
Eviction Actions	5,253	5,337	5,284	5,318	6,068	6,057	0%	5,836	5,900	1%
Other Civil	7,628	6,479	5,371	5,100	5,653	3,561	-37%	4,857	3,974	-18%
Orders of Protection	344	334	318	302	325	346	7%	320	340	6%
Injunctions against Harassment	265	251	219	203	205	231	13%	193	207	7%
<b>Adult Probation</b>										
Pretrial Standard Supervision	1,459	1,825	1,834	2,089	1,800	2,031	13%	1,907	1,911	0%
Pretrial Electronic Monitoring	201	314	440	605	491	641	31%	502	625	25%
Standard Probation Supervision	21,750	21,658	21,622	21,422	21,289	21,861	3%	21,249	22,167	4%
Intensive Probation Supervision	798	732	709	871	833	920	10%	855	955	12%
Unsupervised Probation Supervision	8,528	8,215	7,329	6,351	6,732	5,574	-17%	6,628	5,582	-16%
<b>Juvenile Detention and Probation</b>										
Avg Daily Detention Pop	234	231	209	183	183	172	-6%	189	165	-13%
Avg Length of Stay (in days)	13.7	13.1	14.5	14.0	14.8	14.3	-3%	13.2	13.2	0%
Standard Probation	3,509	2,792	2,401	2,086	2,240	1,971	-12%	2,196	1,989	-9%
Intensive Probation	324	283	236	234	227	202	-11%	223	202	-9%

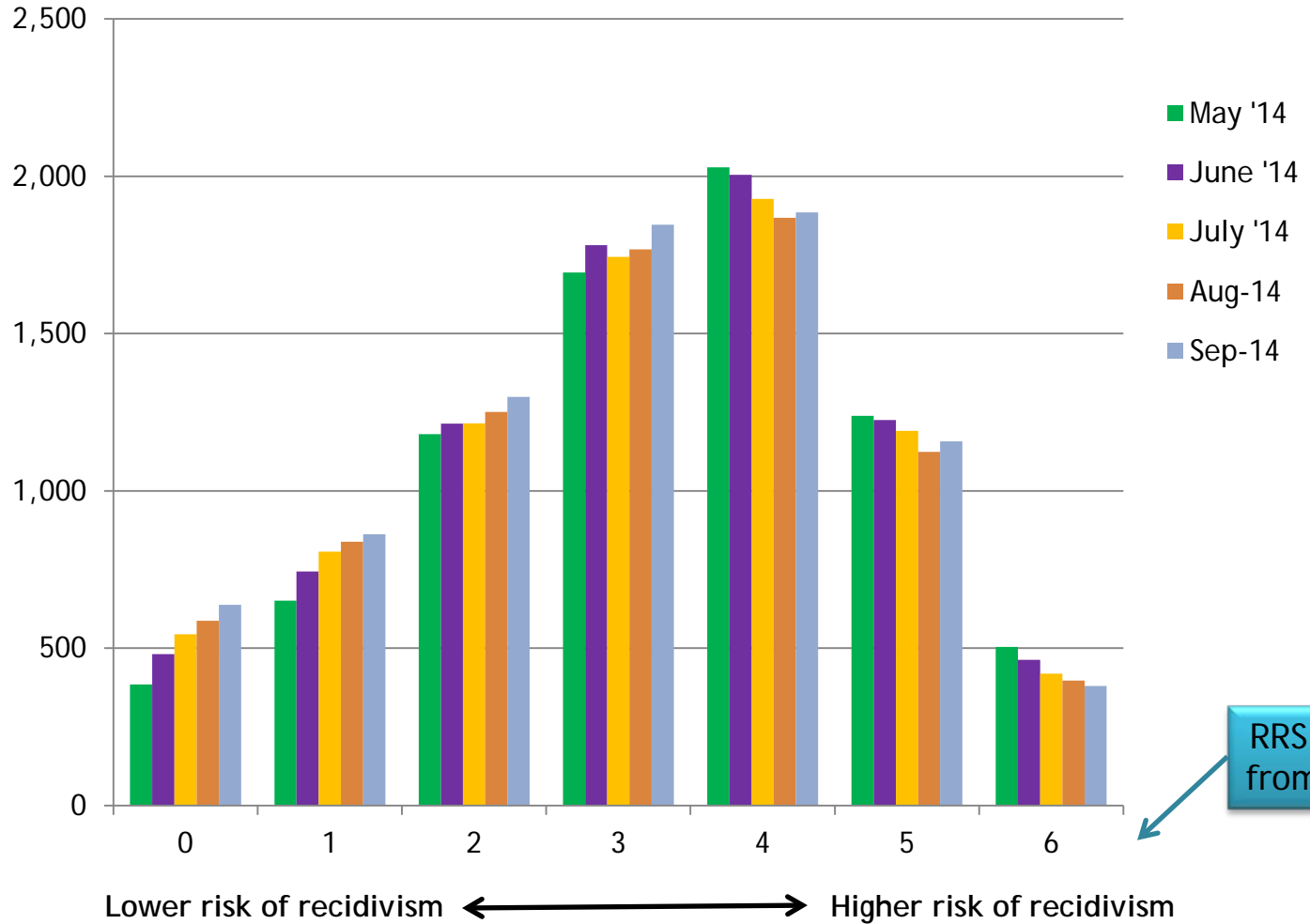
\* NOTE - "Annual Averages" are the mean of each monthly average for that Fiscal Year (FY).

# Number of Dependency Filings, Juvenile Court



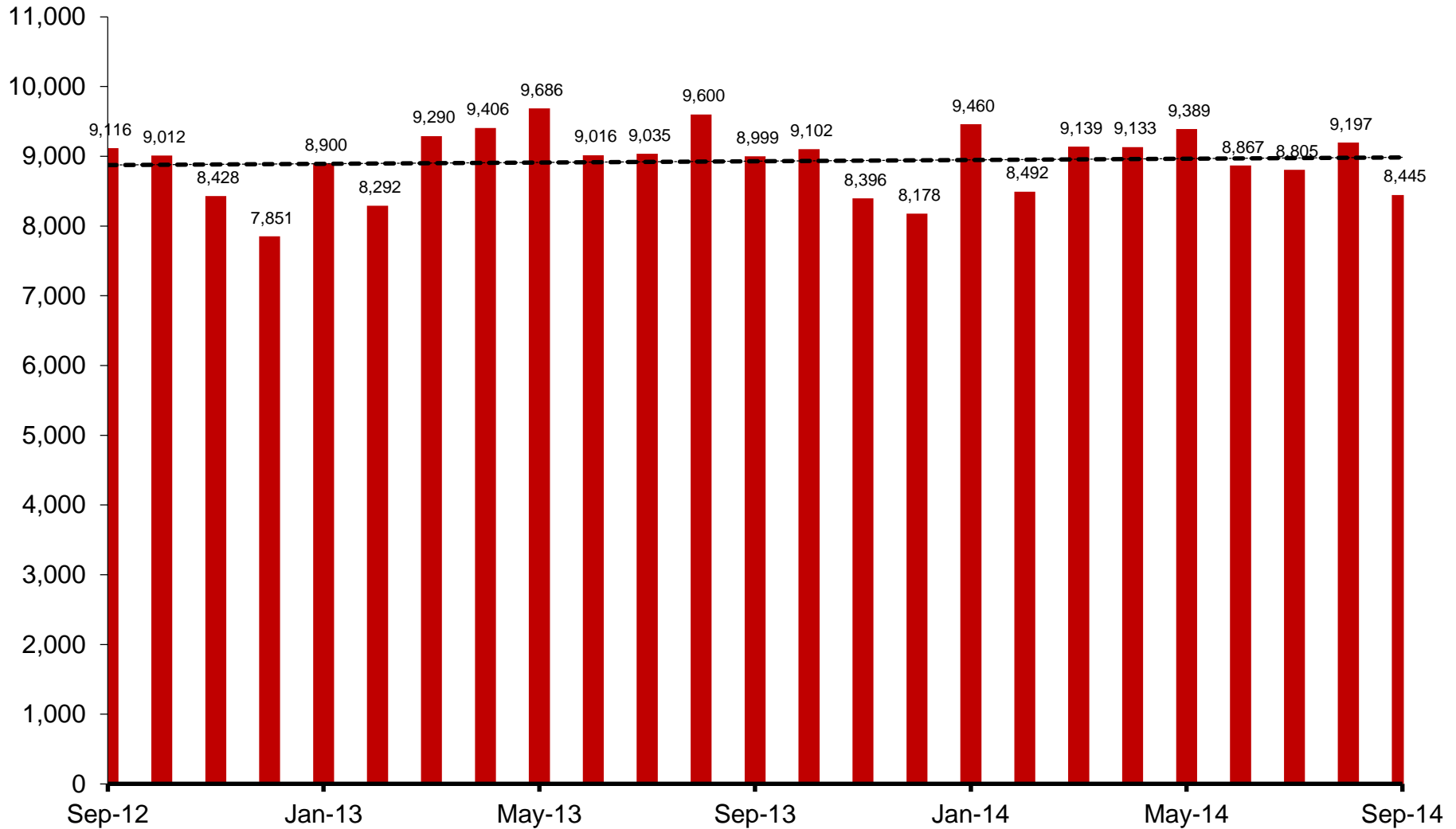
A petition may involve more than one juvenile

# Recidivism Risk Score (RRS / "Proxy") Distribution Among Current Jail Population:

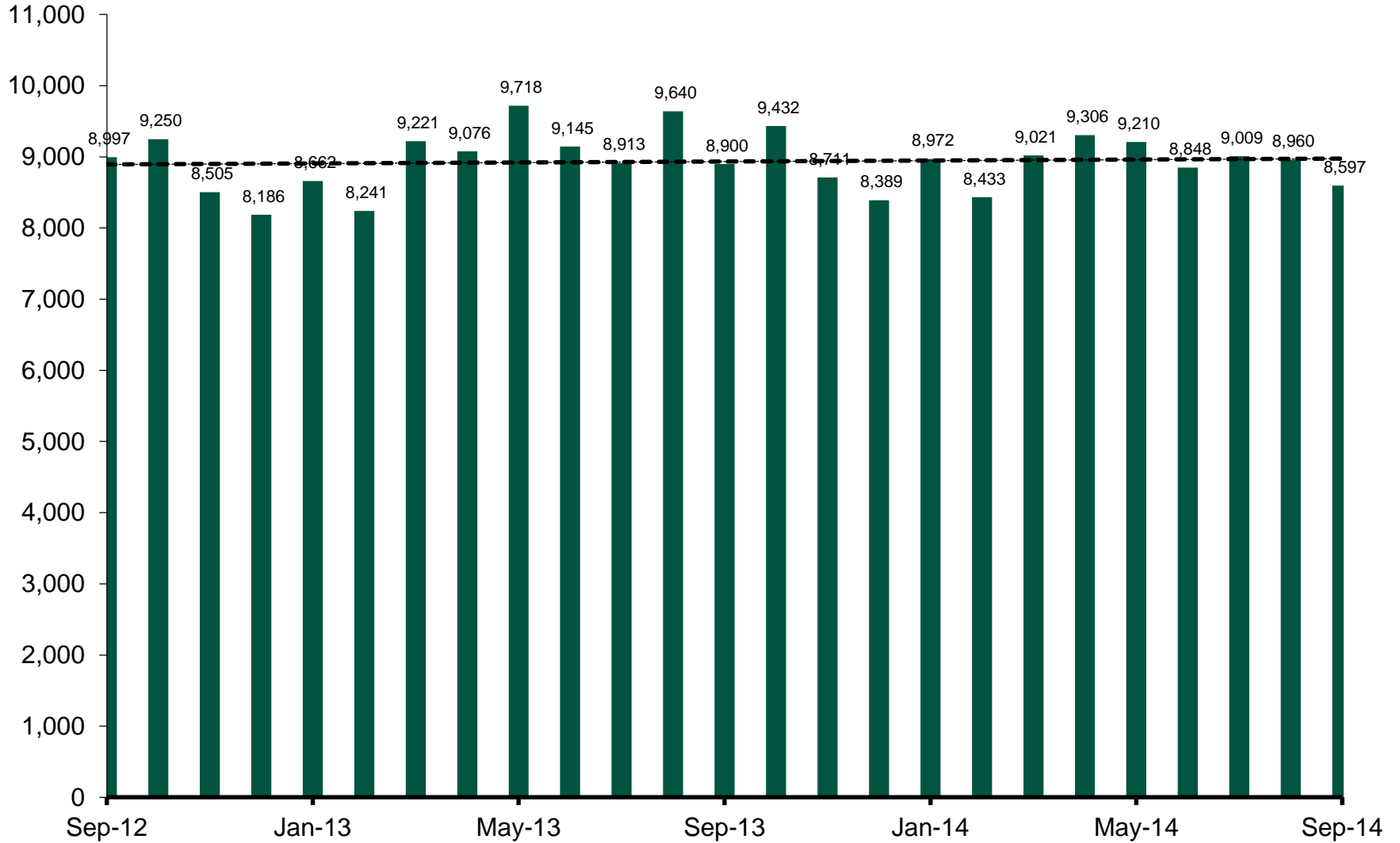


Data pulled first Wednesday of every month for previous month

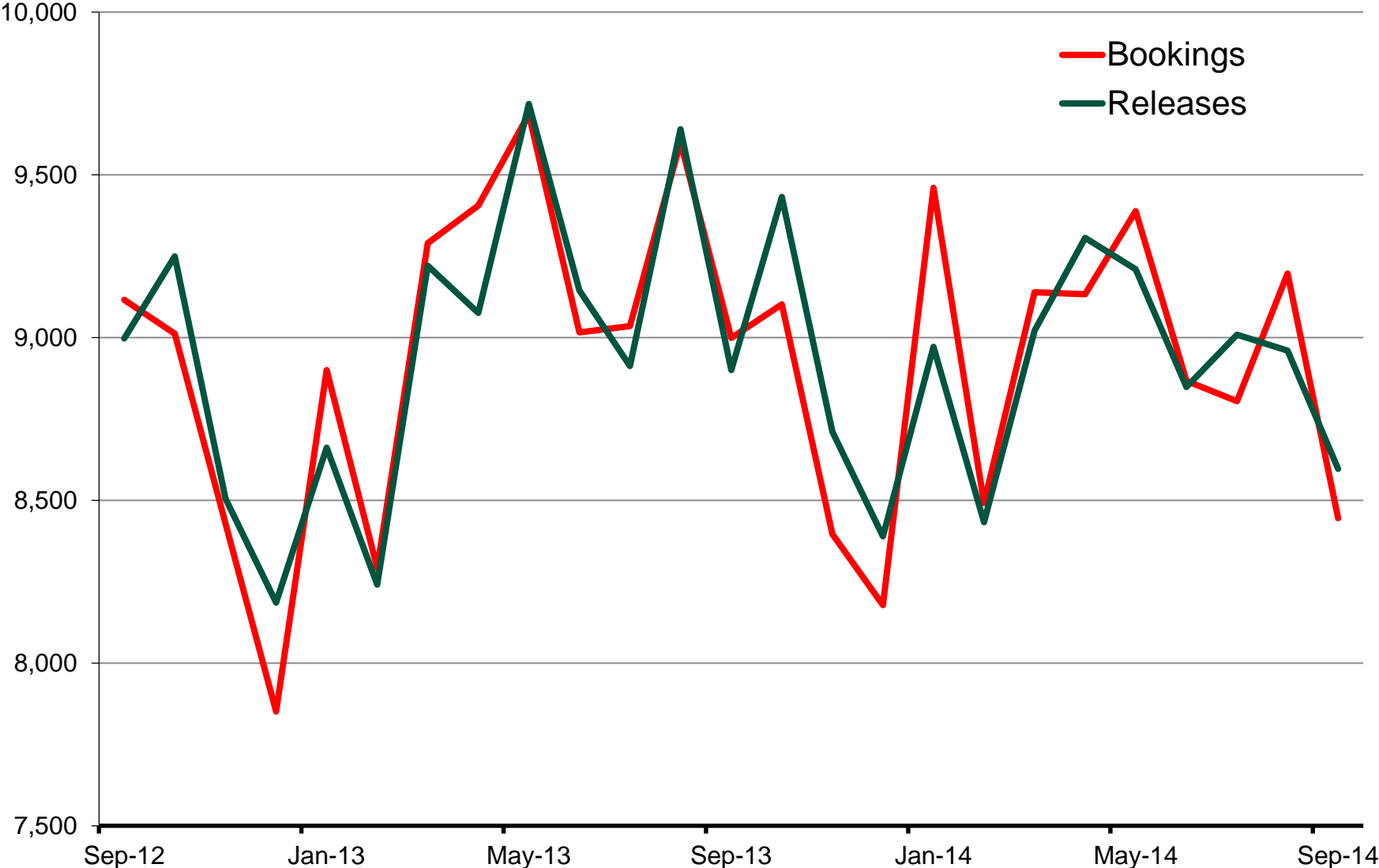
# Jail Bookings



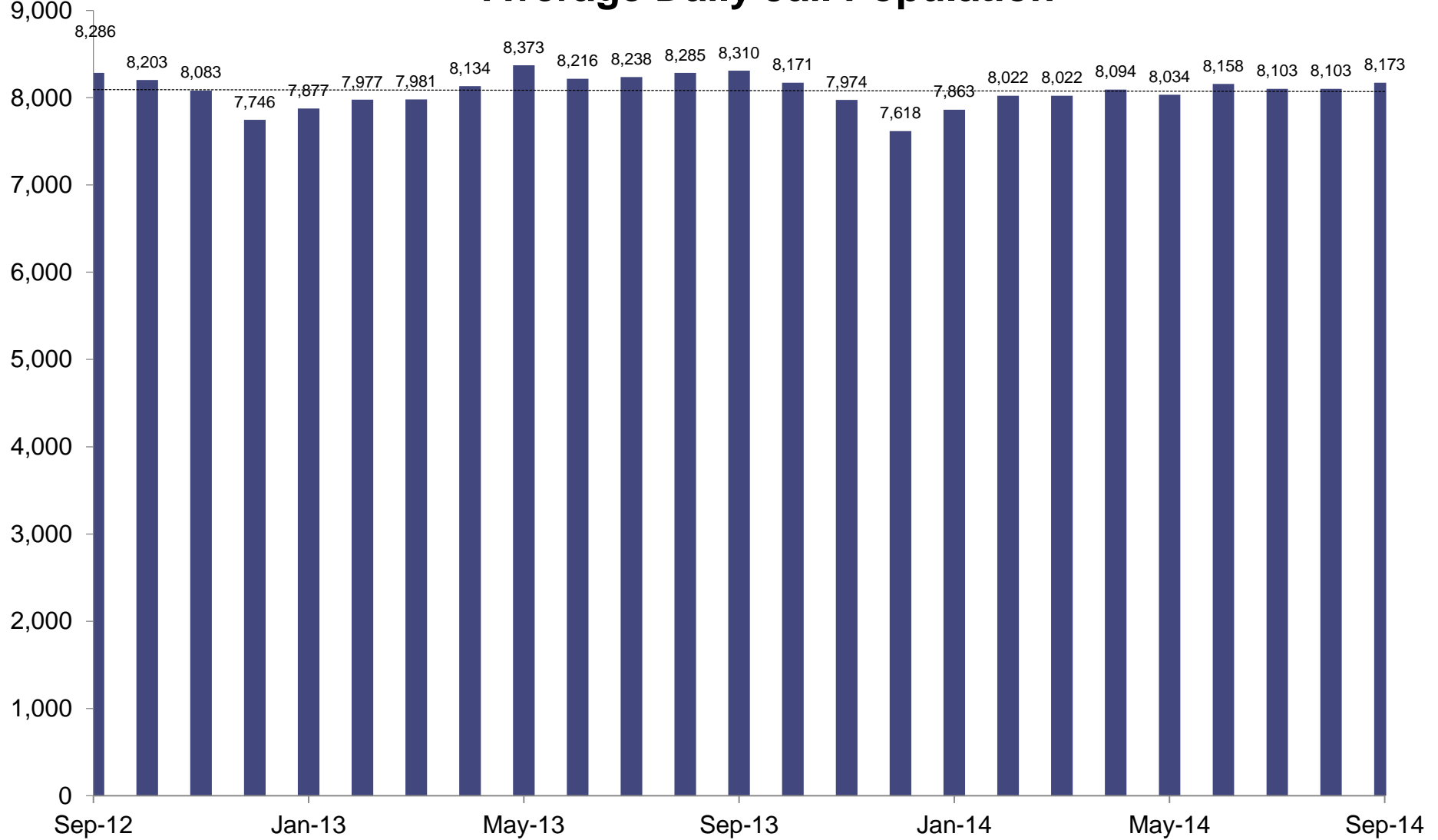
# Jail Releases



# Jail Bookings and Releases



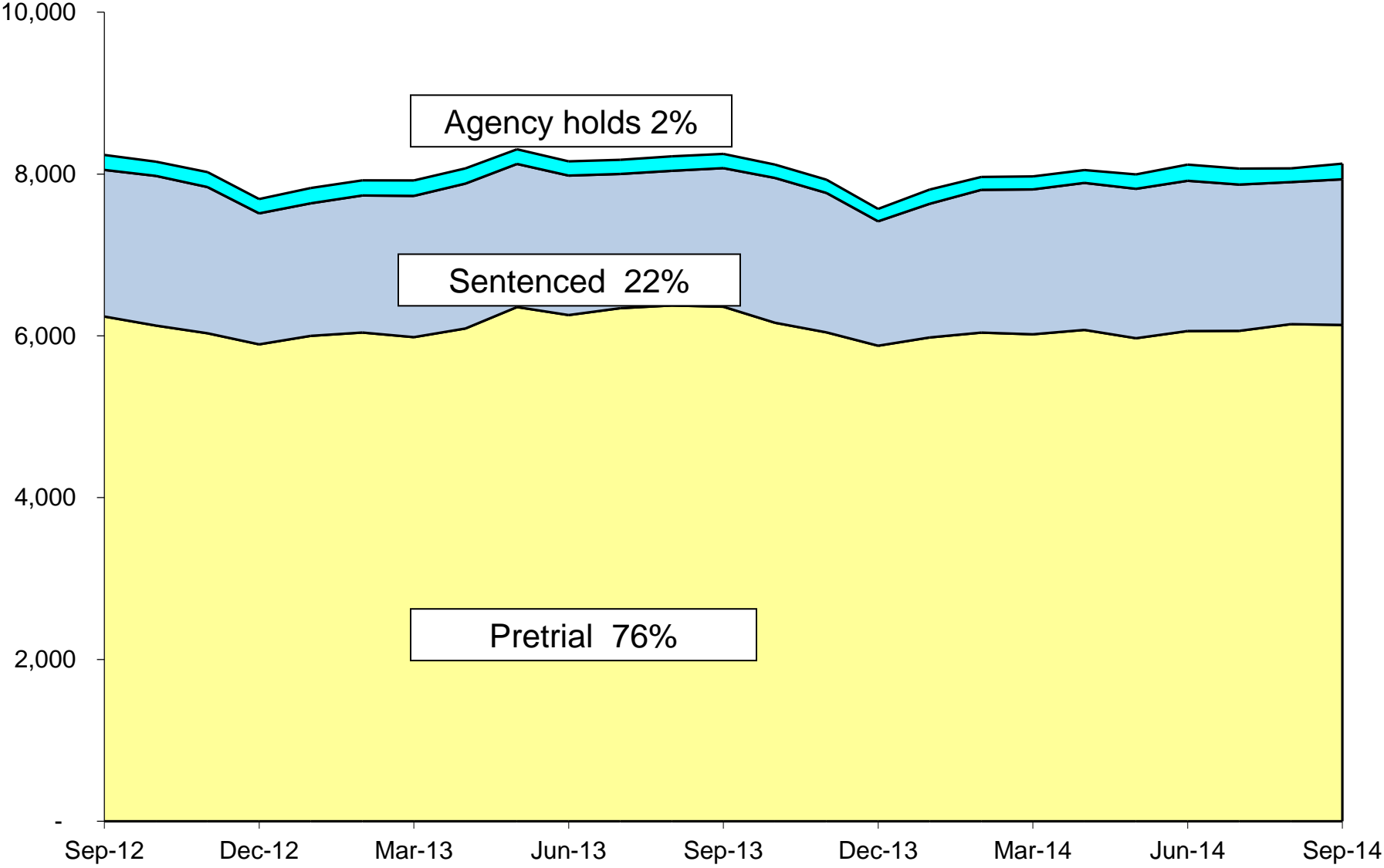
# Average Daily Jail Population



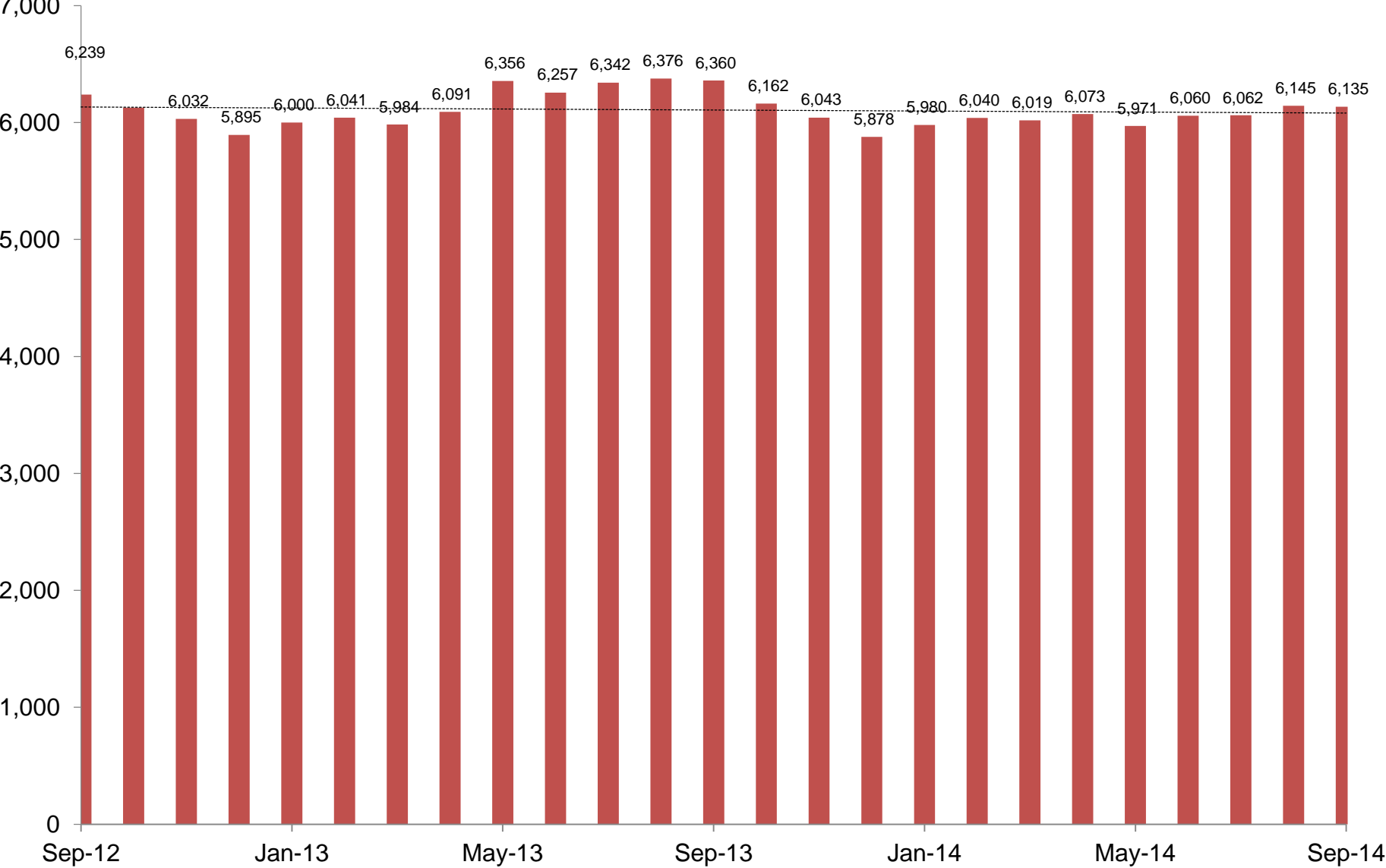
*Includes entire population – Holds, Pretrial, and Sentenced.*



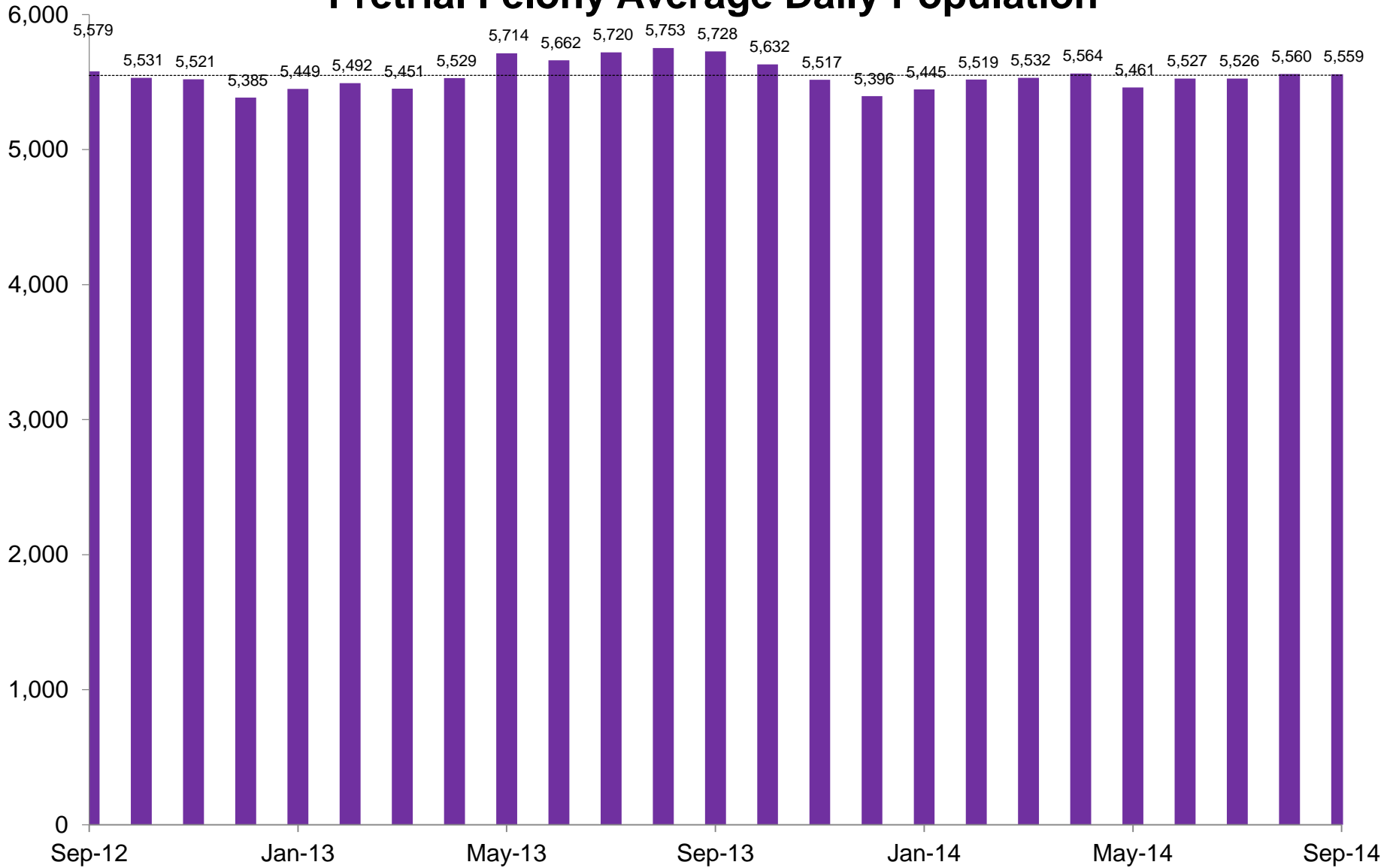
# Average Daily Jail Population by Type



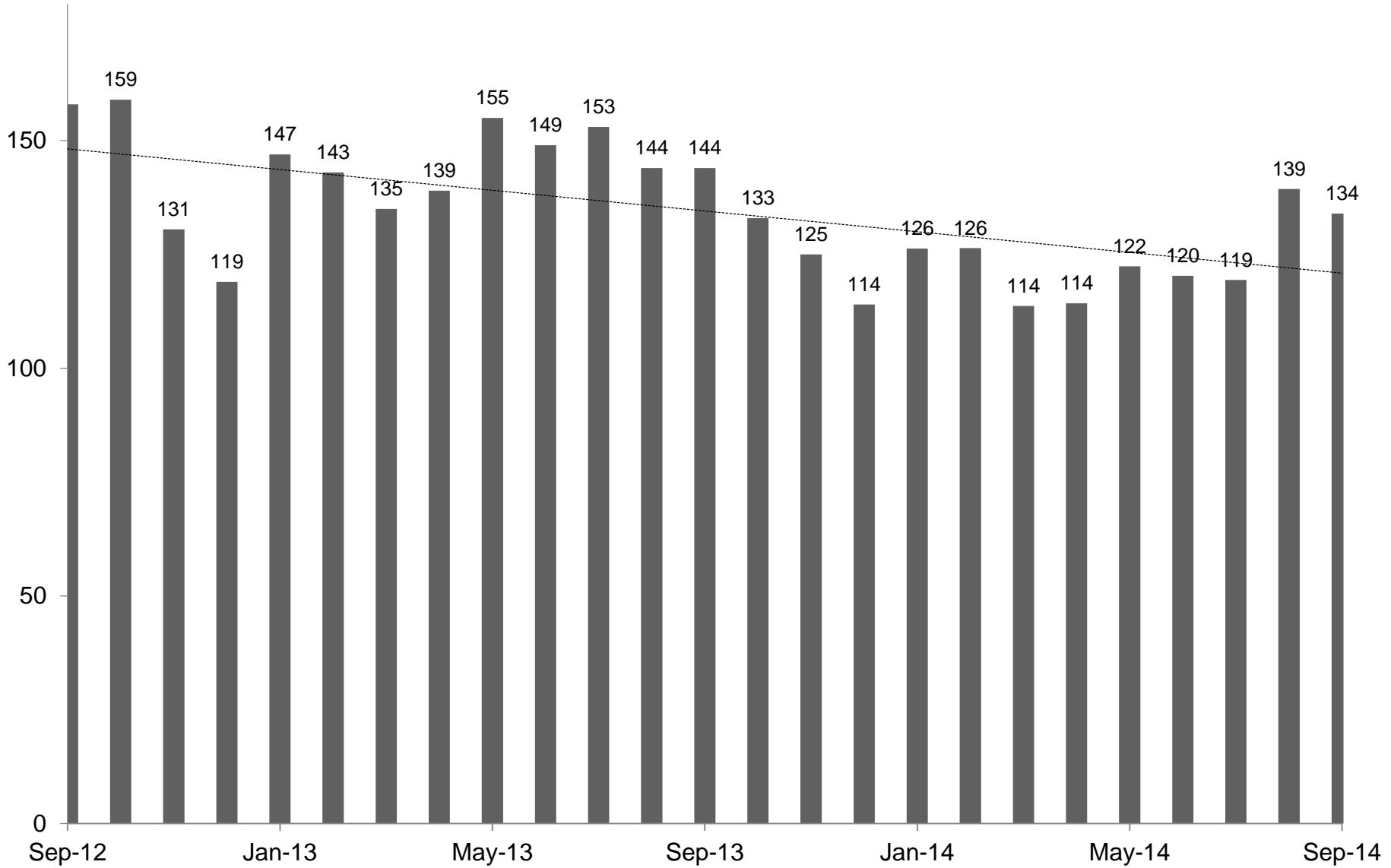
# Pretrial Average Daily Population



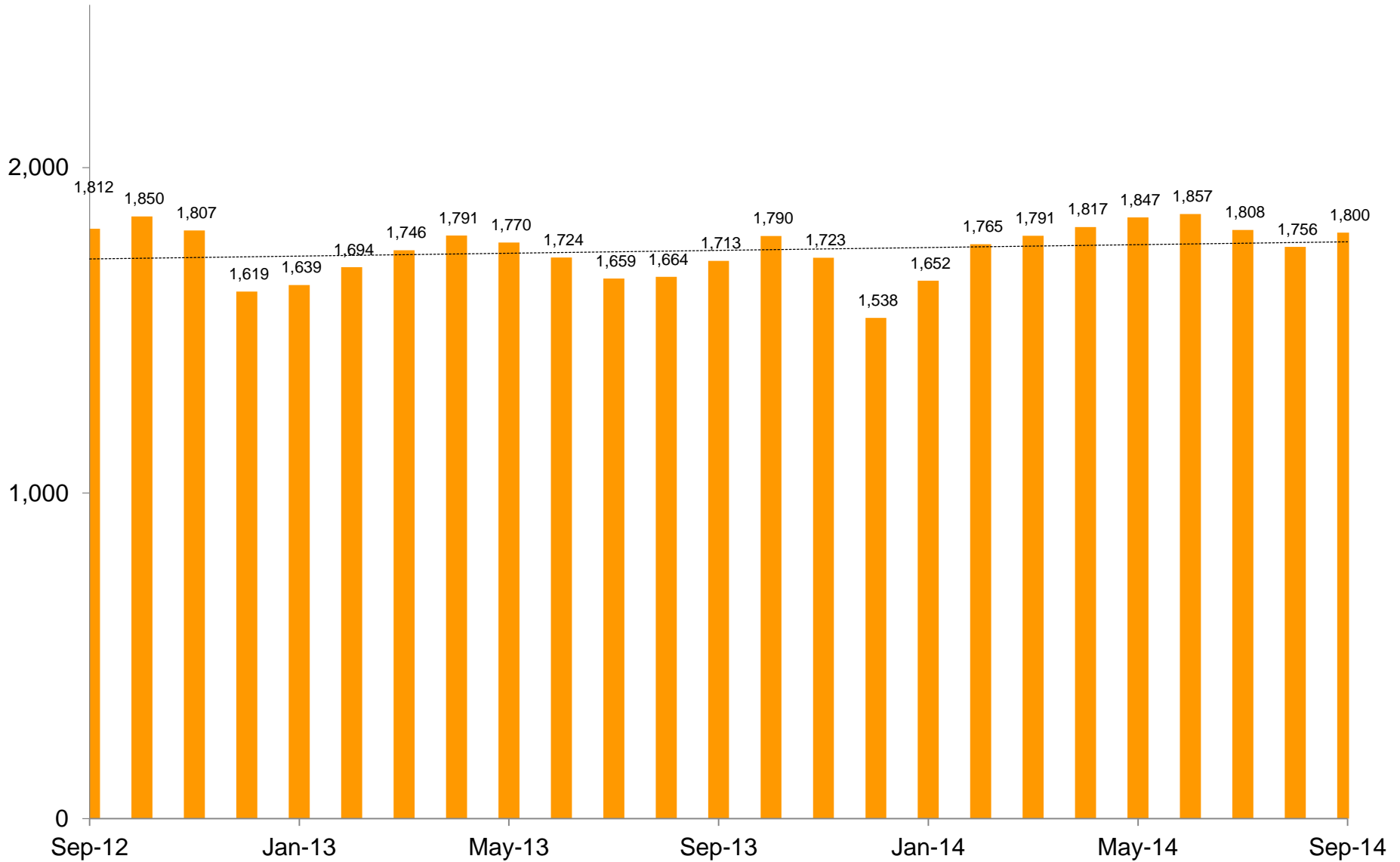
# Pretrial Felony Average Daily Population



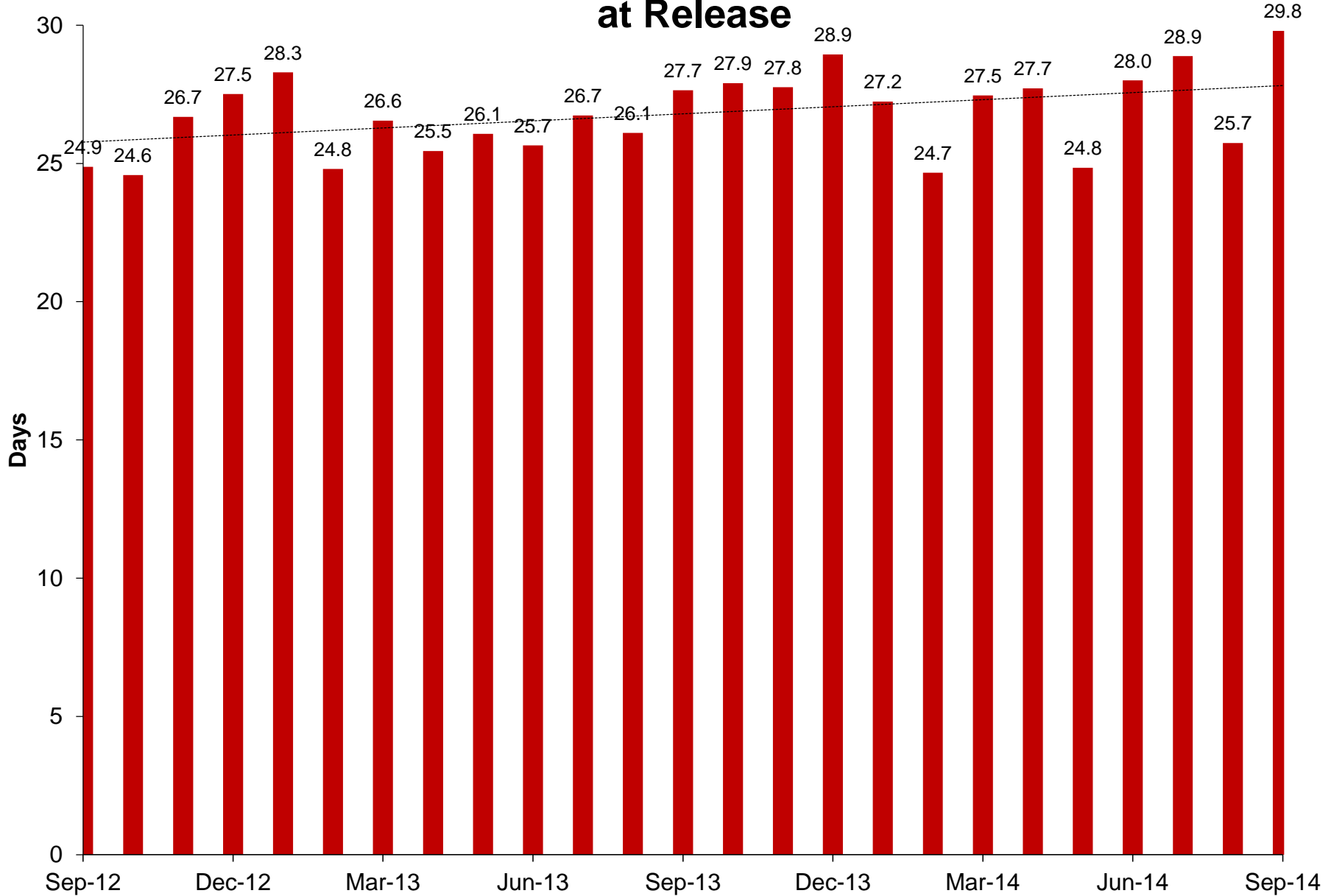
# Pretrial Misdemeanor Average Daily Population



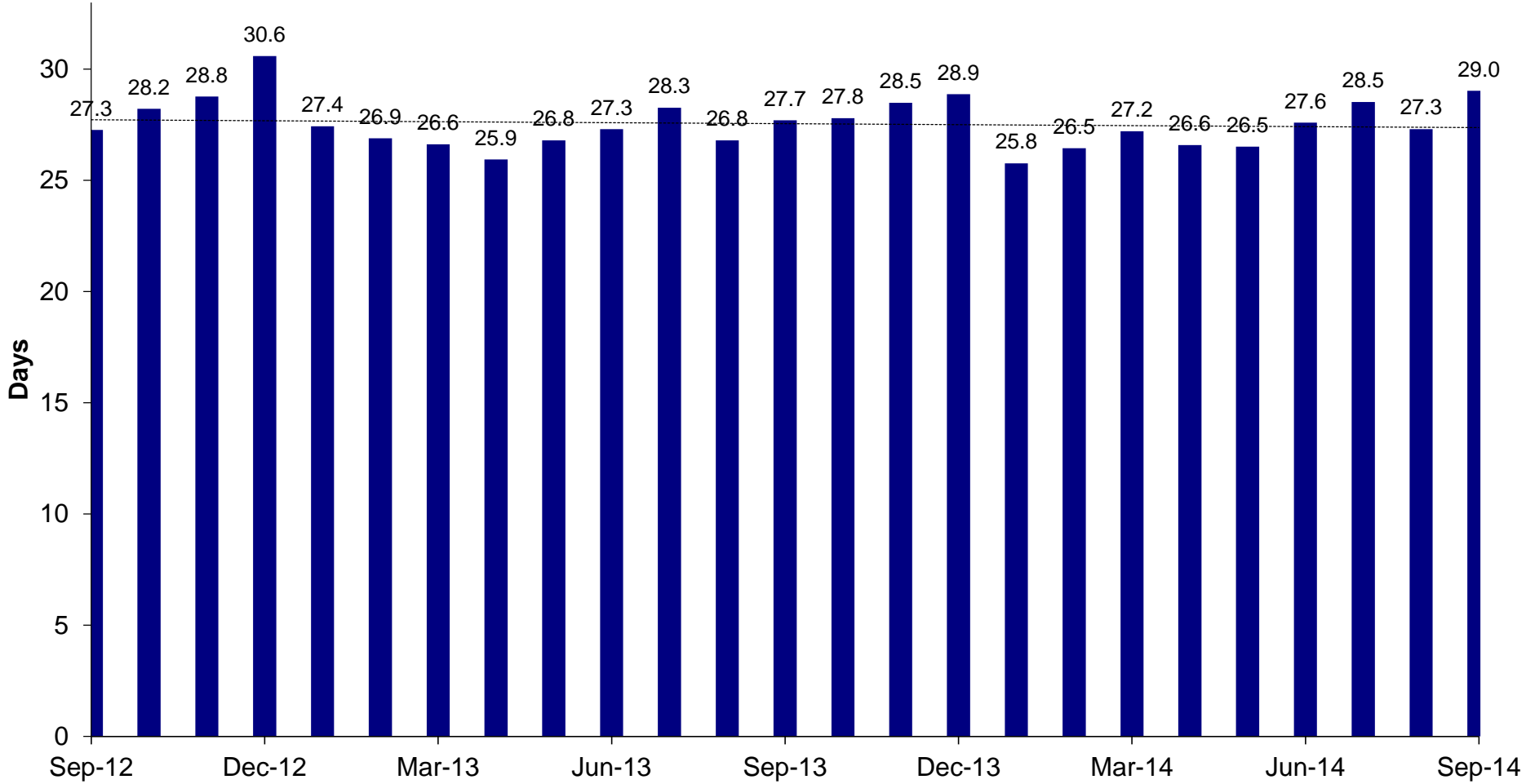
# Sentenced Average Daily Population



# Overall Average Length of Stay in Jail at Release

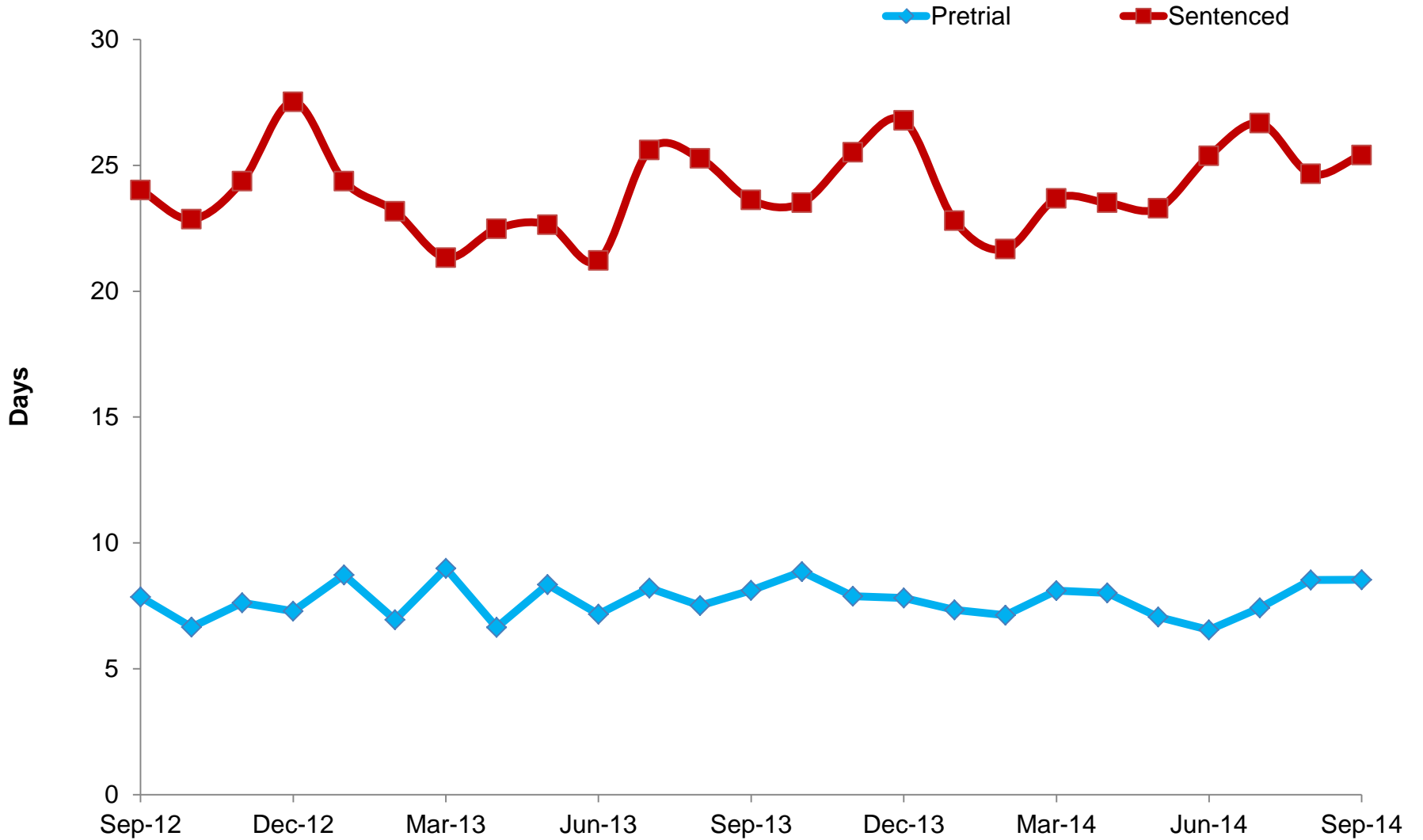


# Overall Average Length of Stay in Jail In Custody\*



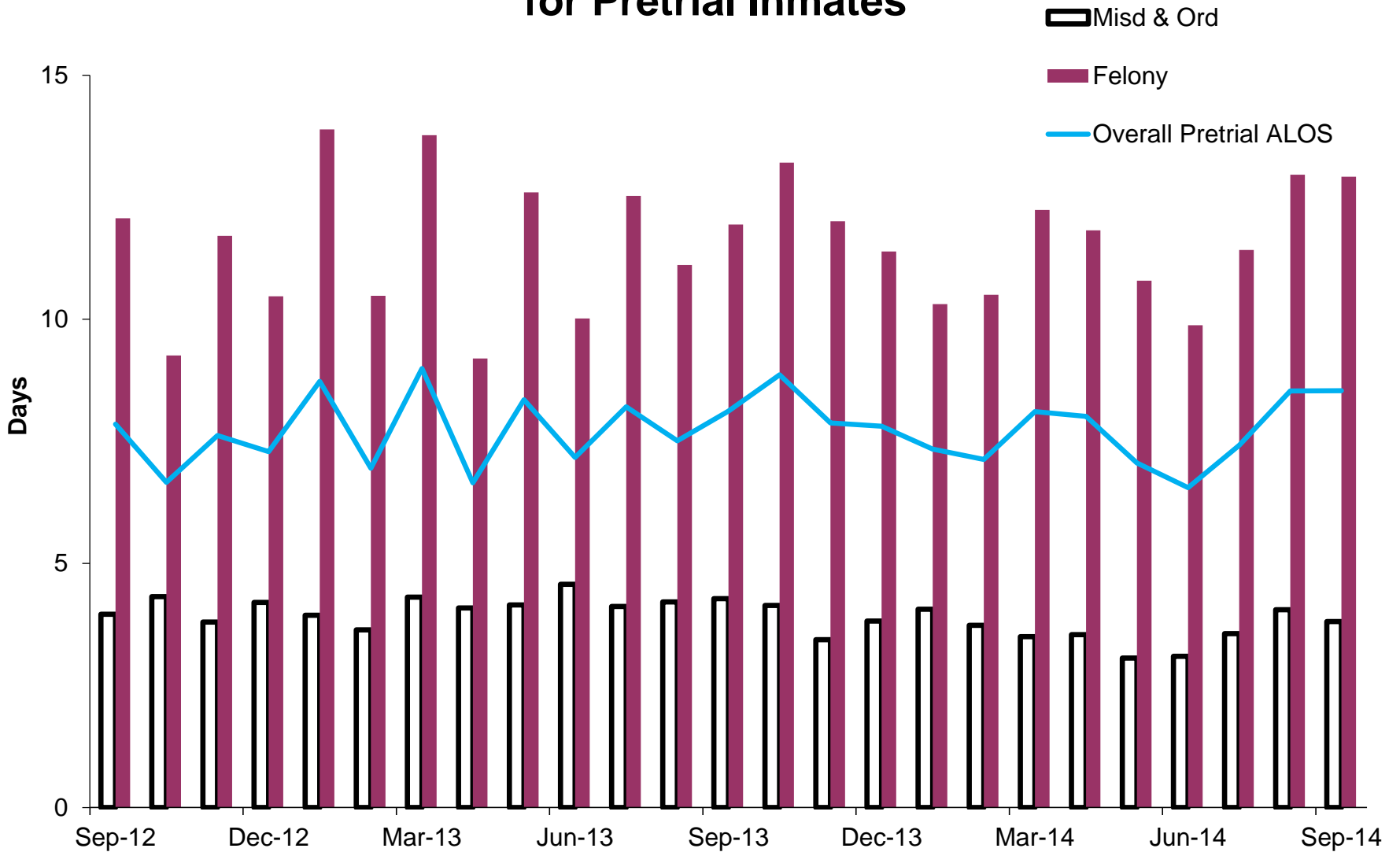
\*Calculated as follows: (Mandays-Releases)/Bookings  
Mandays = Count at midnight plus releases

# Average Length of Stay in Jail Pretrial and Sentenced Inmates

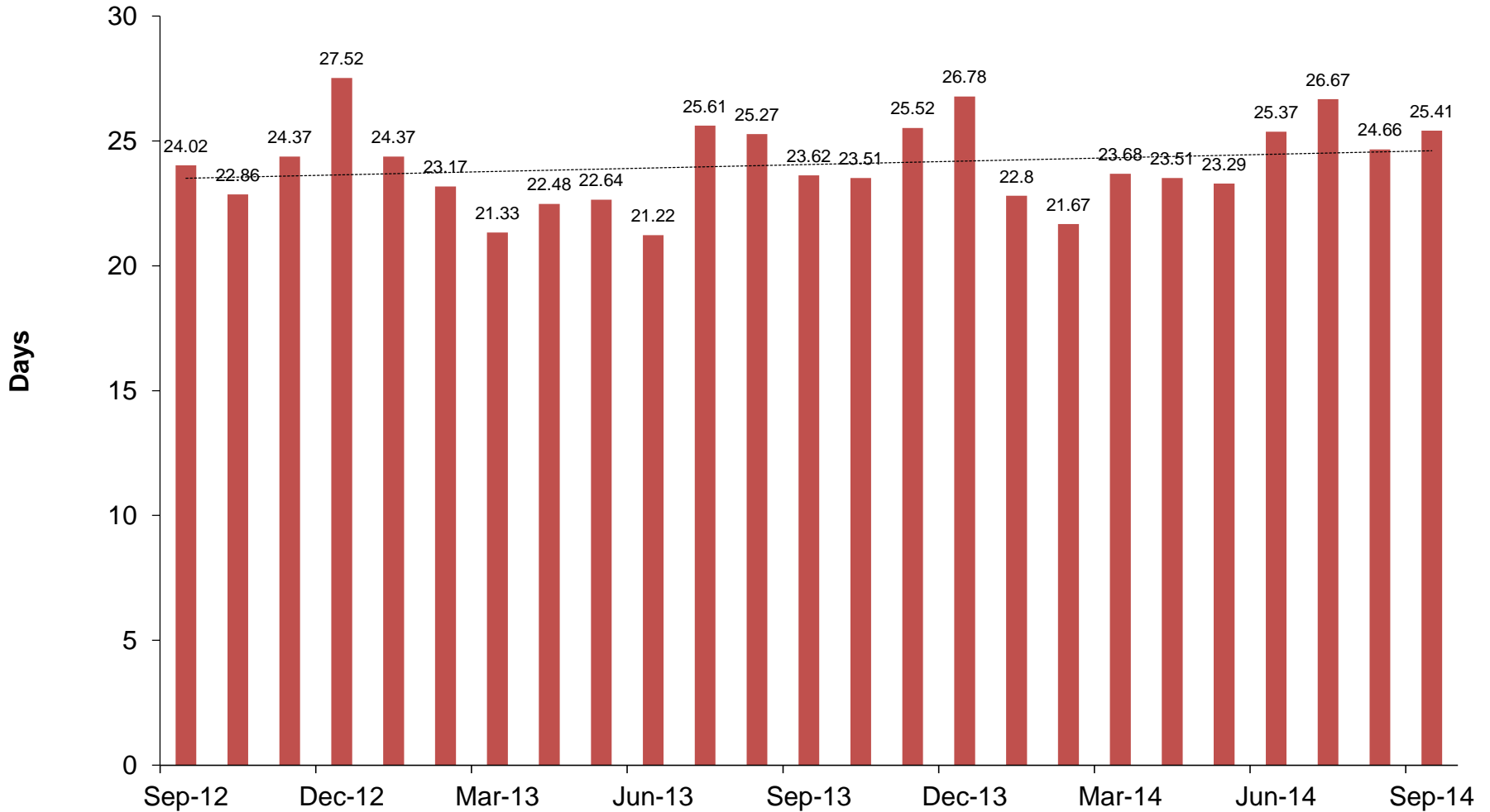




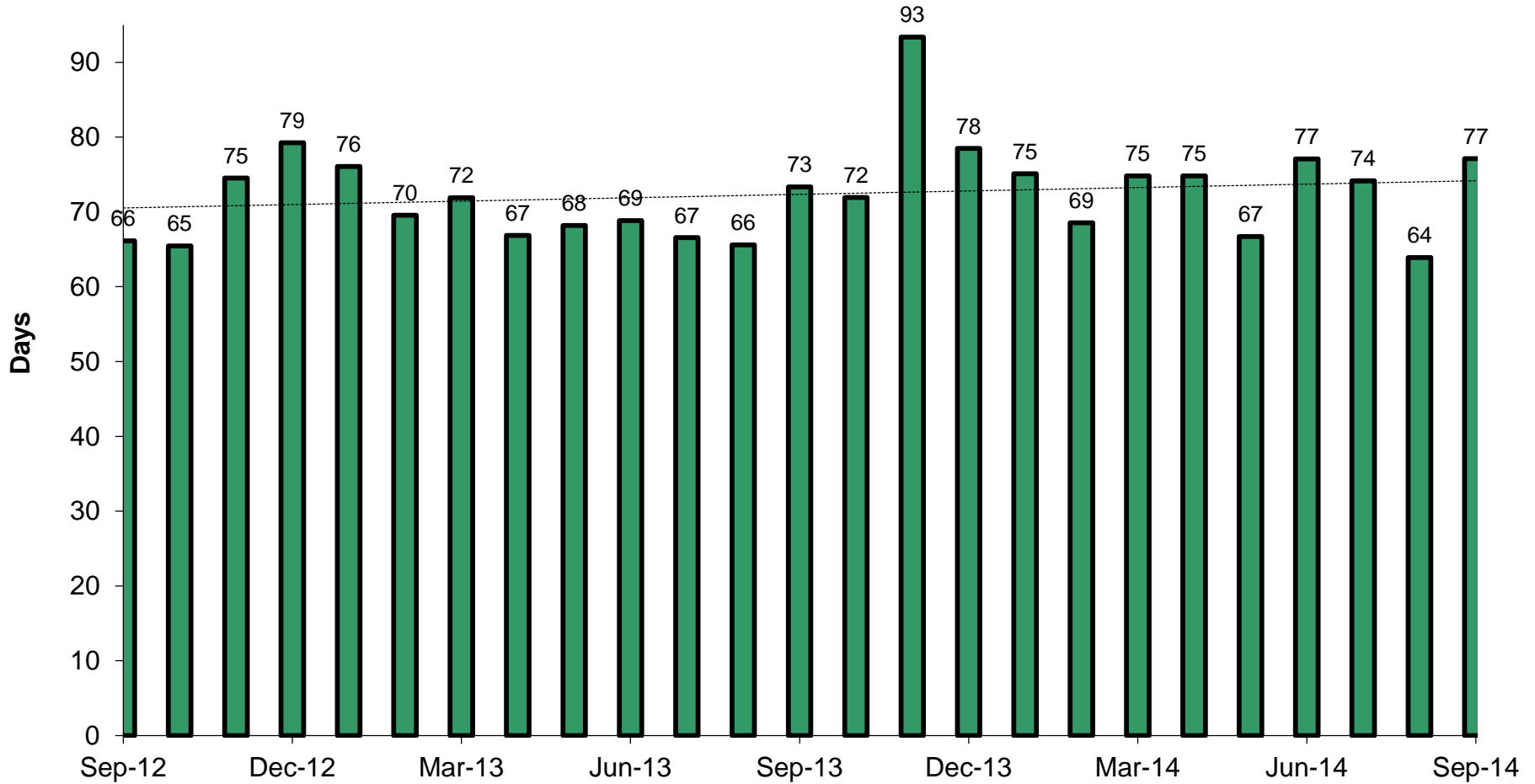
# Average Length of Stay in Jail for Pretrial Inmates



# Average Length of Stay in Jail for Sentenced Inmates

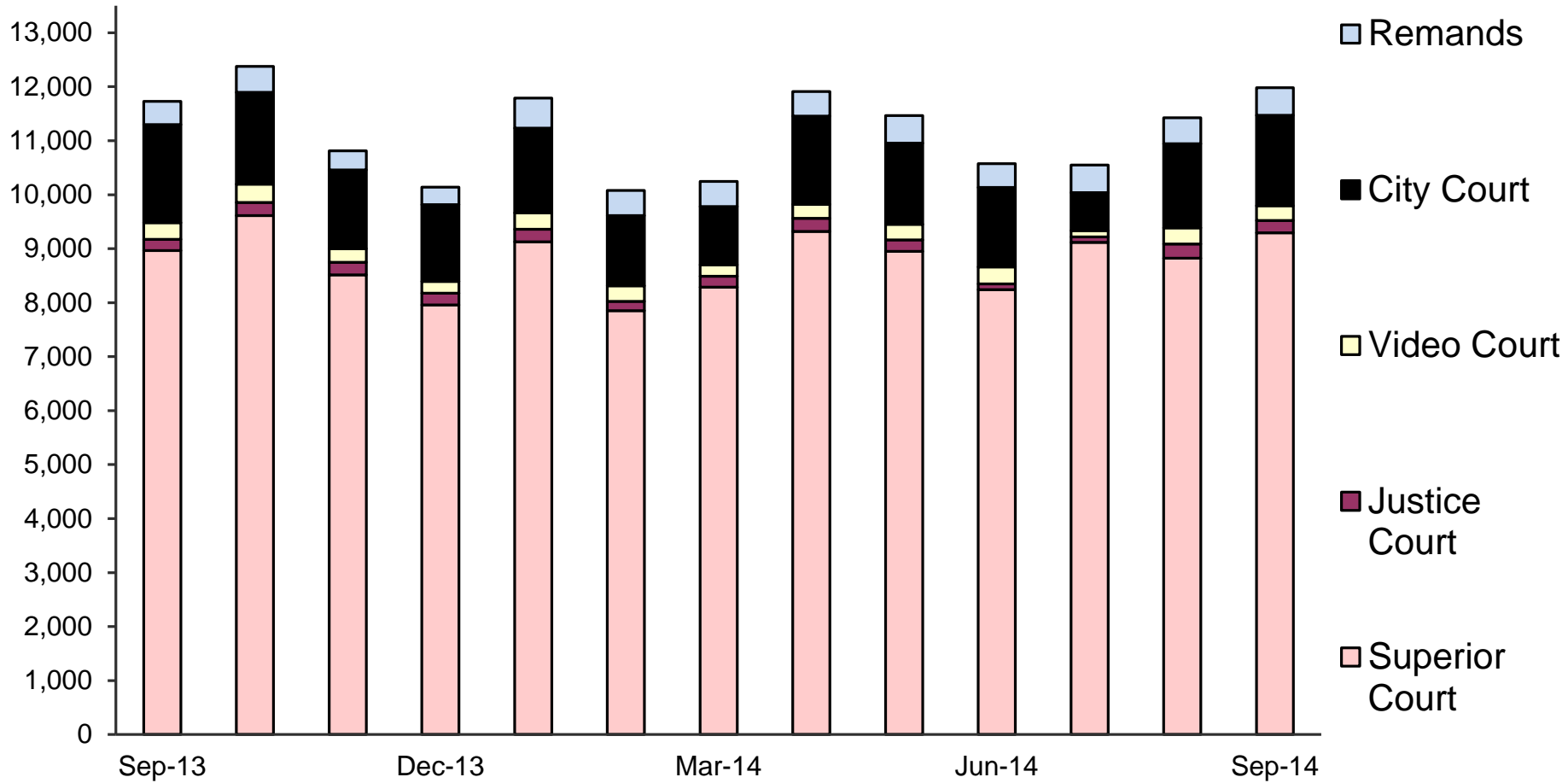


# Average Length of Stay in Jail Agency Holds



68% Dept of Corrections, 5% Federal agencies, and 27% Other

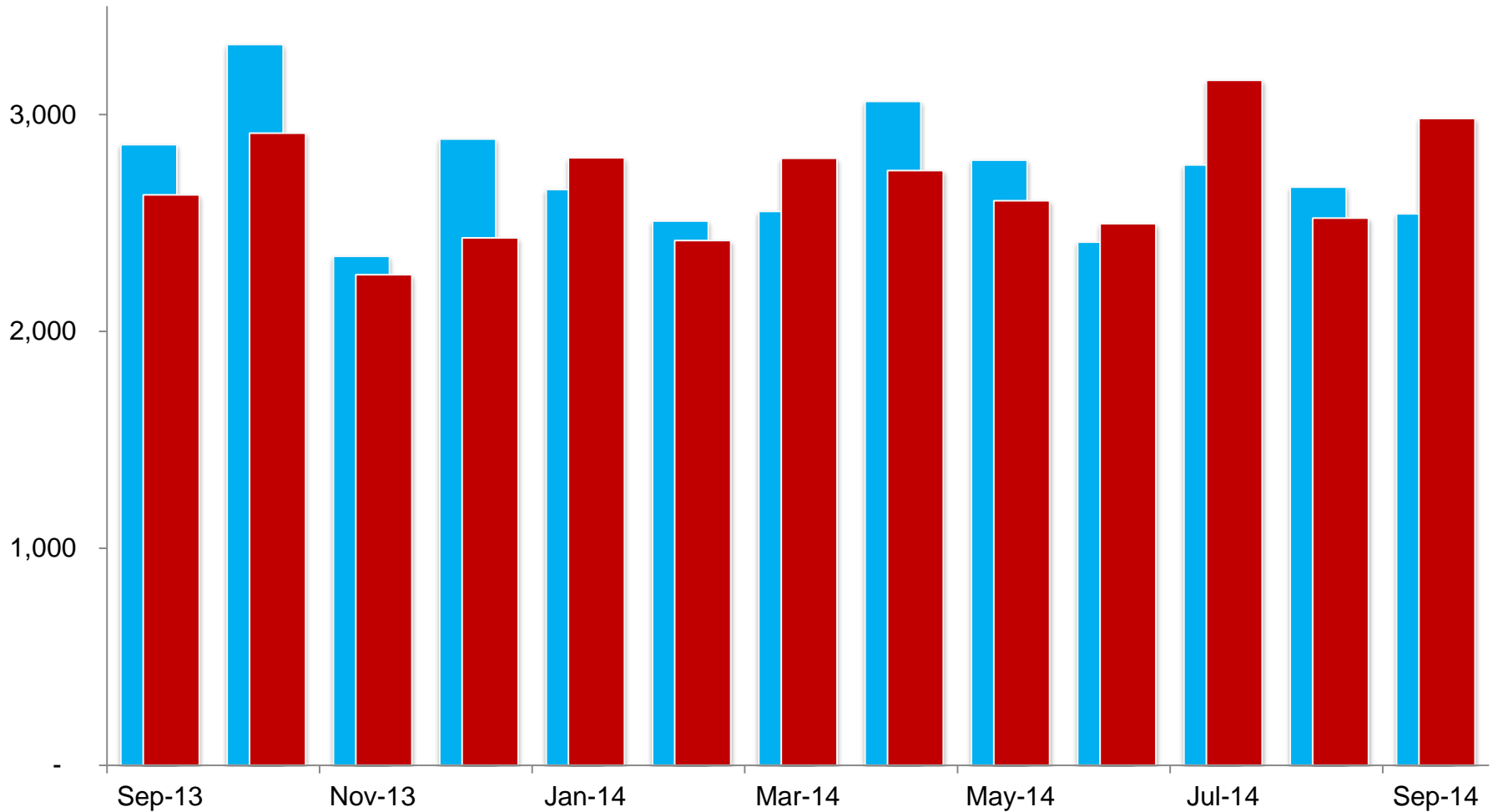
# Sheriff's Office Transports for Inmate Court Appearances



# Superior Court Criminal Case Filings and Terminations

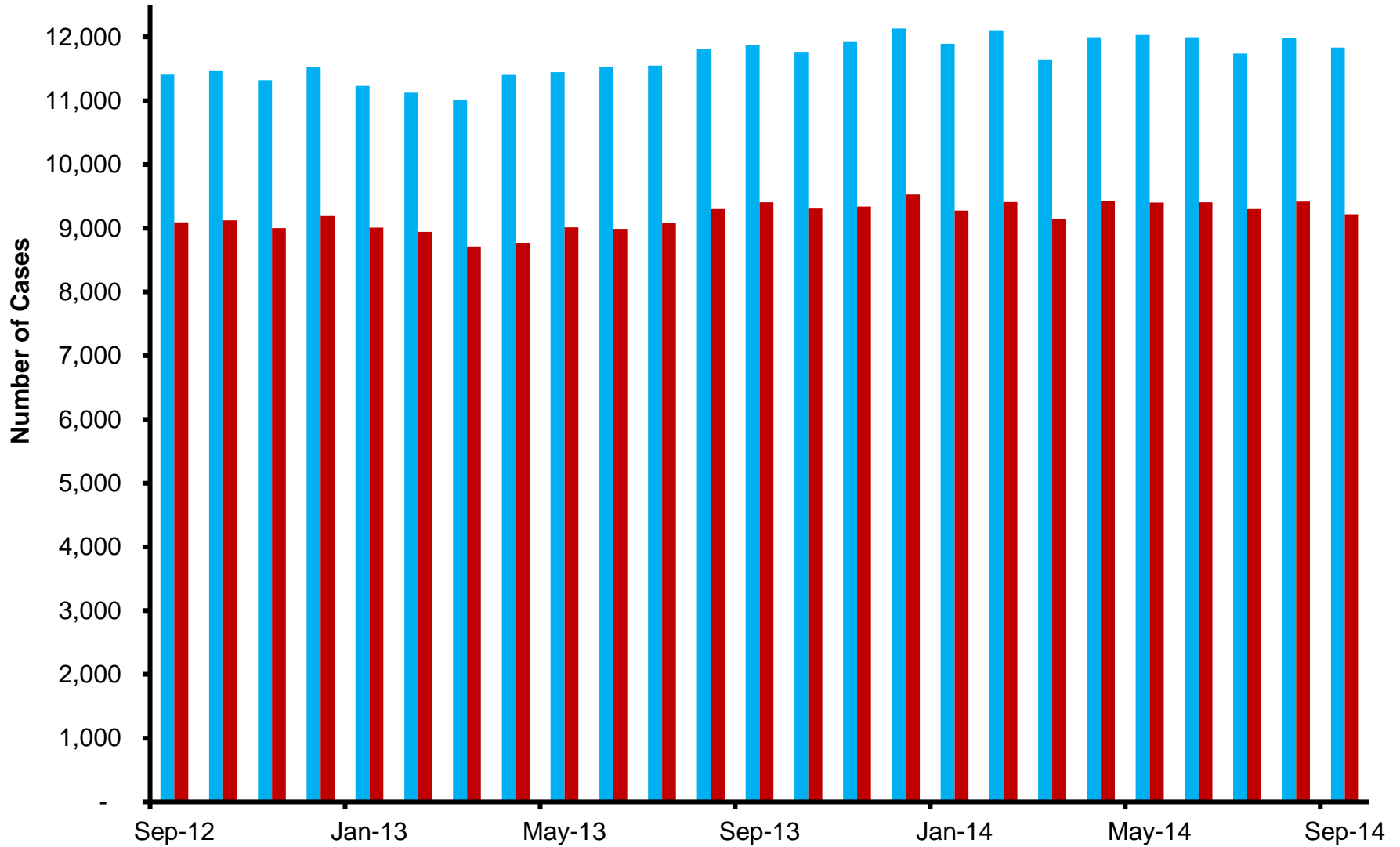
■ New Case Filings

■ Total Cases Terminated

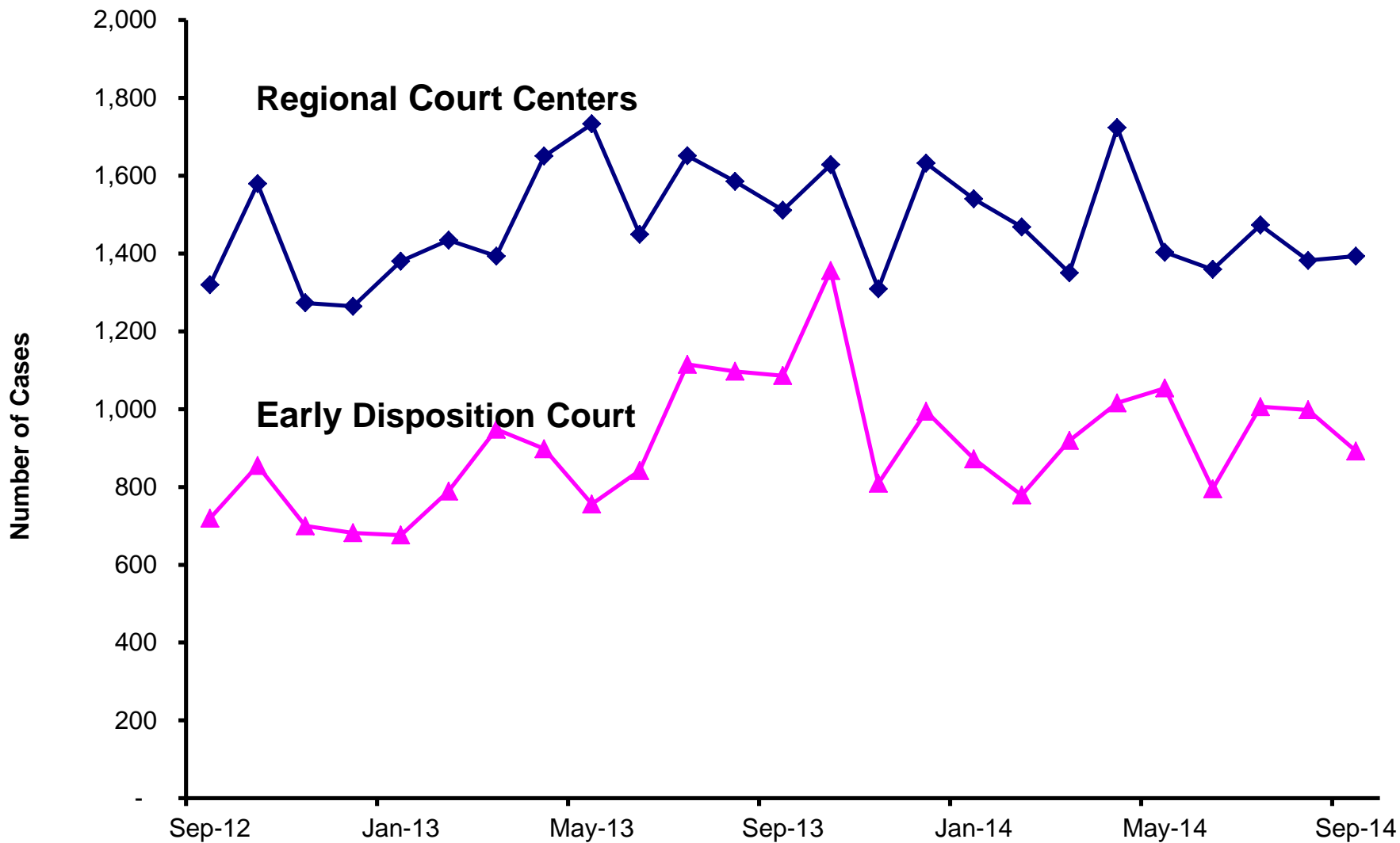


# Active Pending Criminal Case Inventory

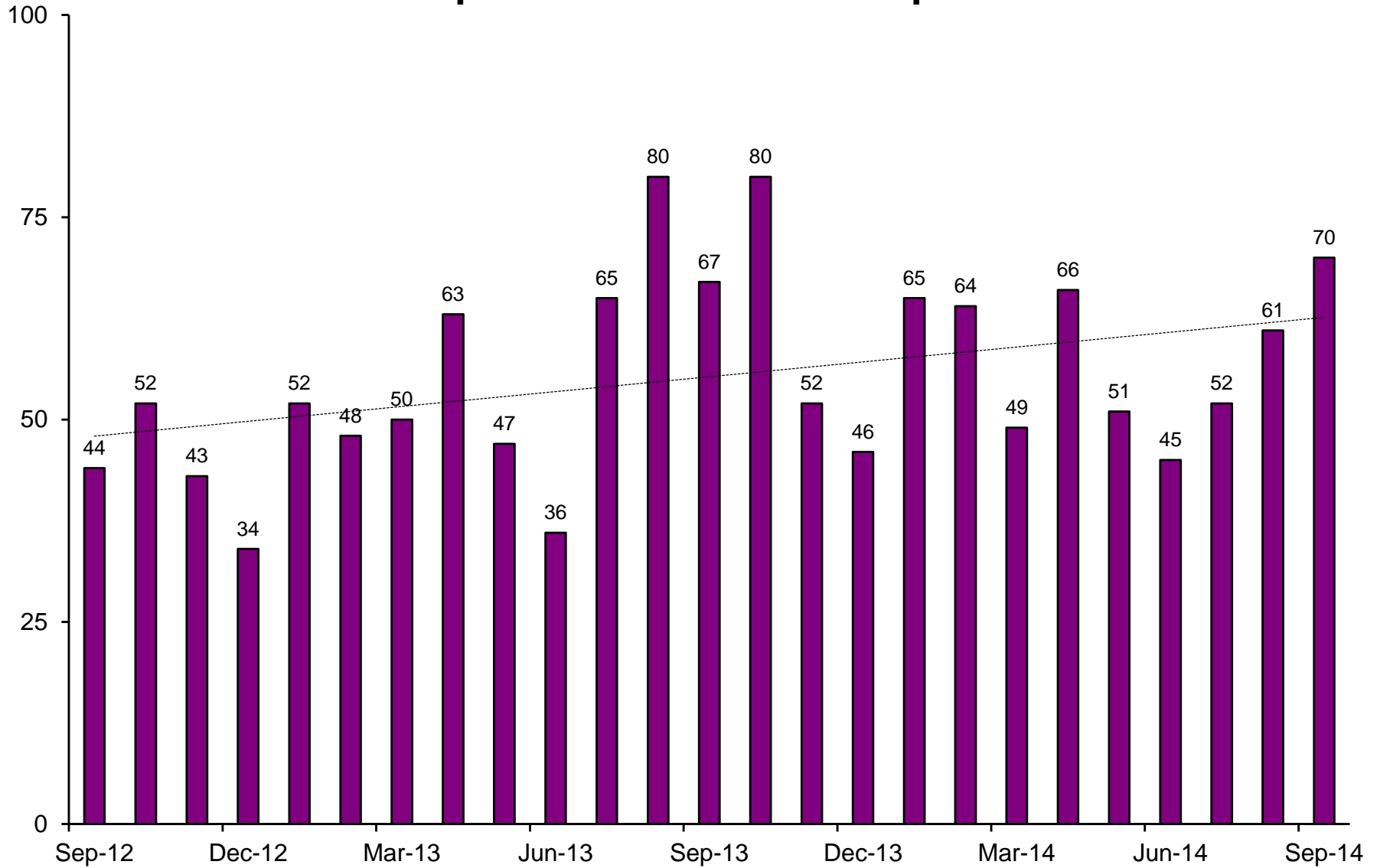
■ Active pending cases  
■ "Active" Arraigned



# Direct Complaints into Superior Court



# Superior Court Trials Completed



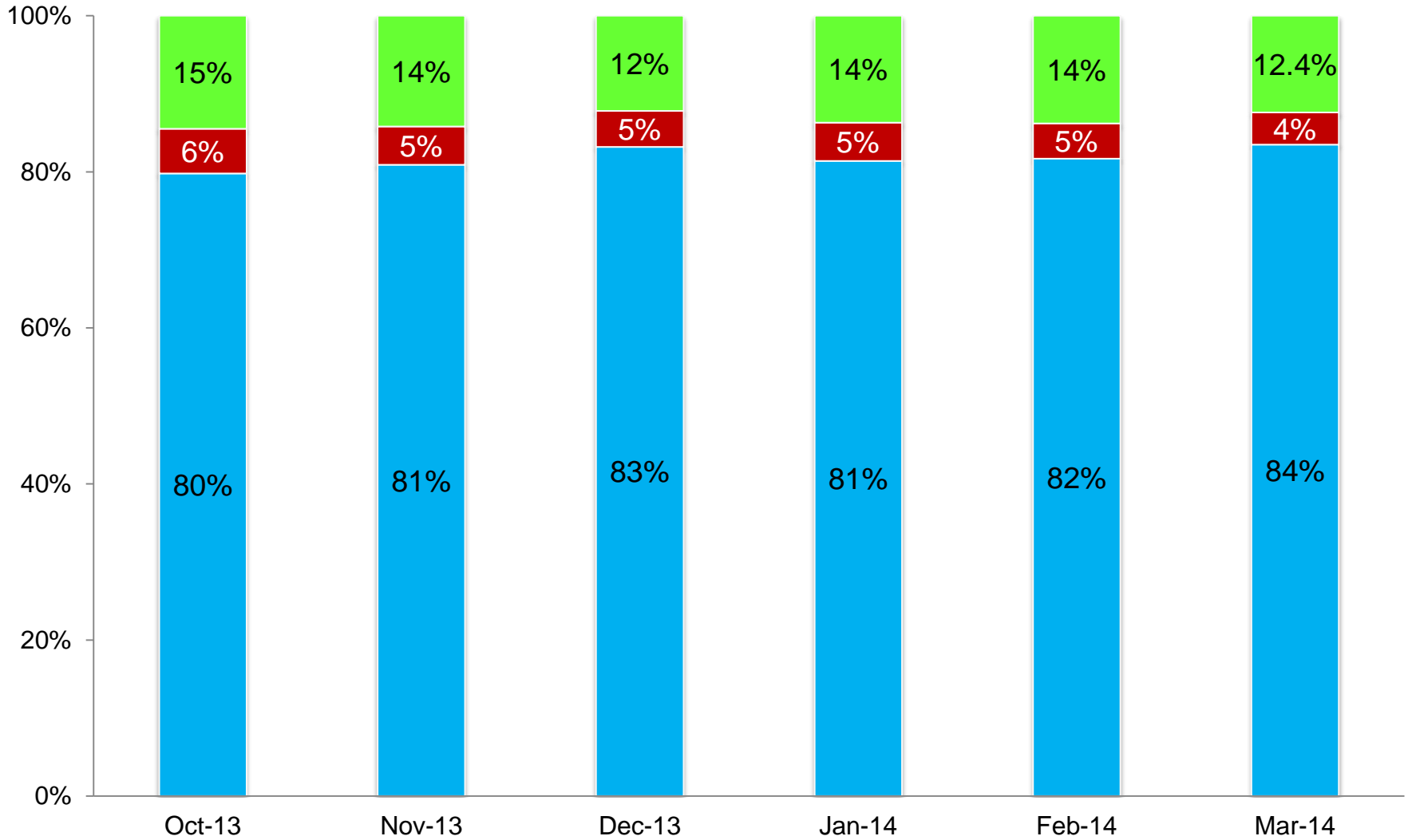


# Status of Cases After 180 Days

■ Active

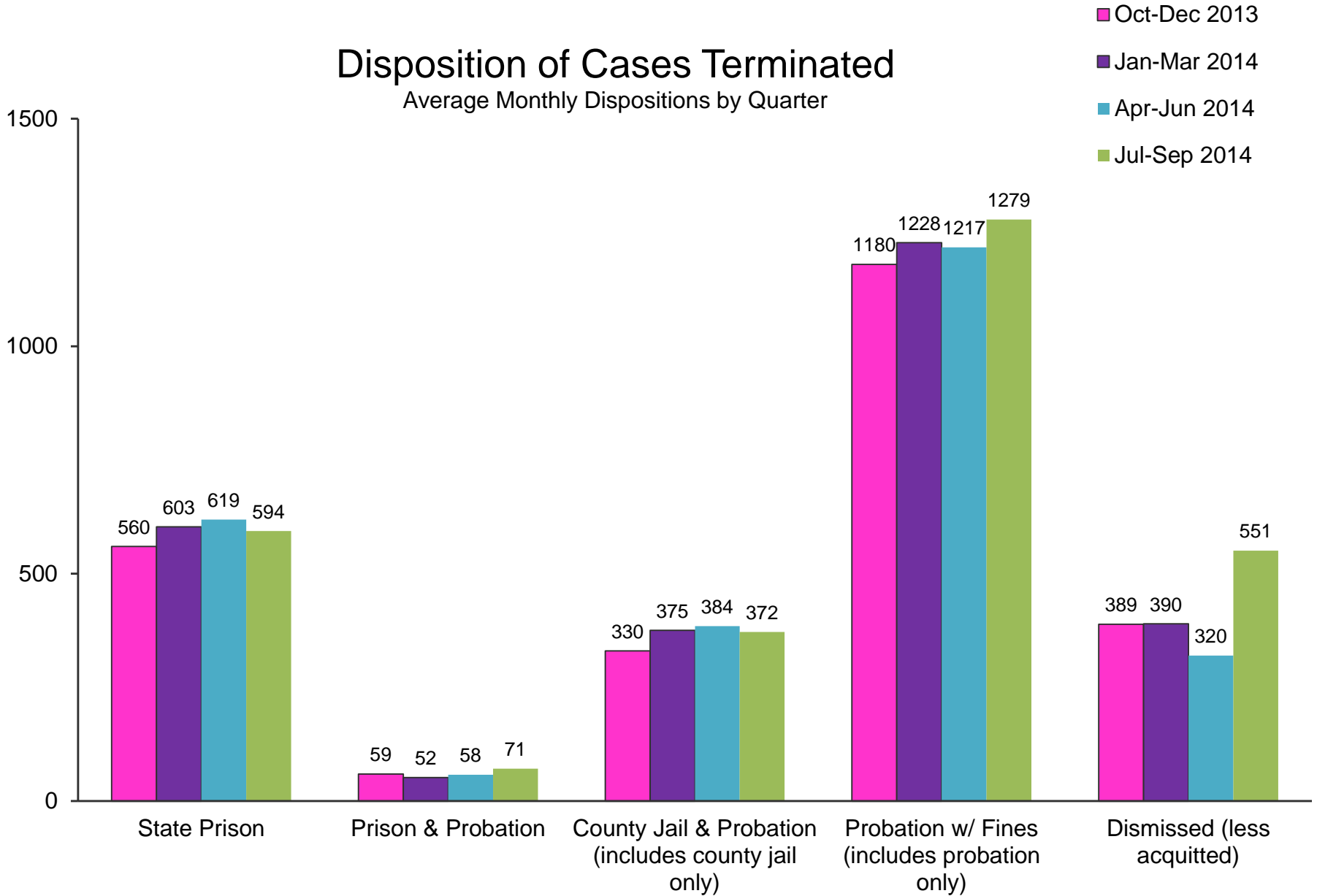
■ Awaiting sentence

■ Terminated

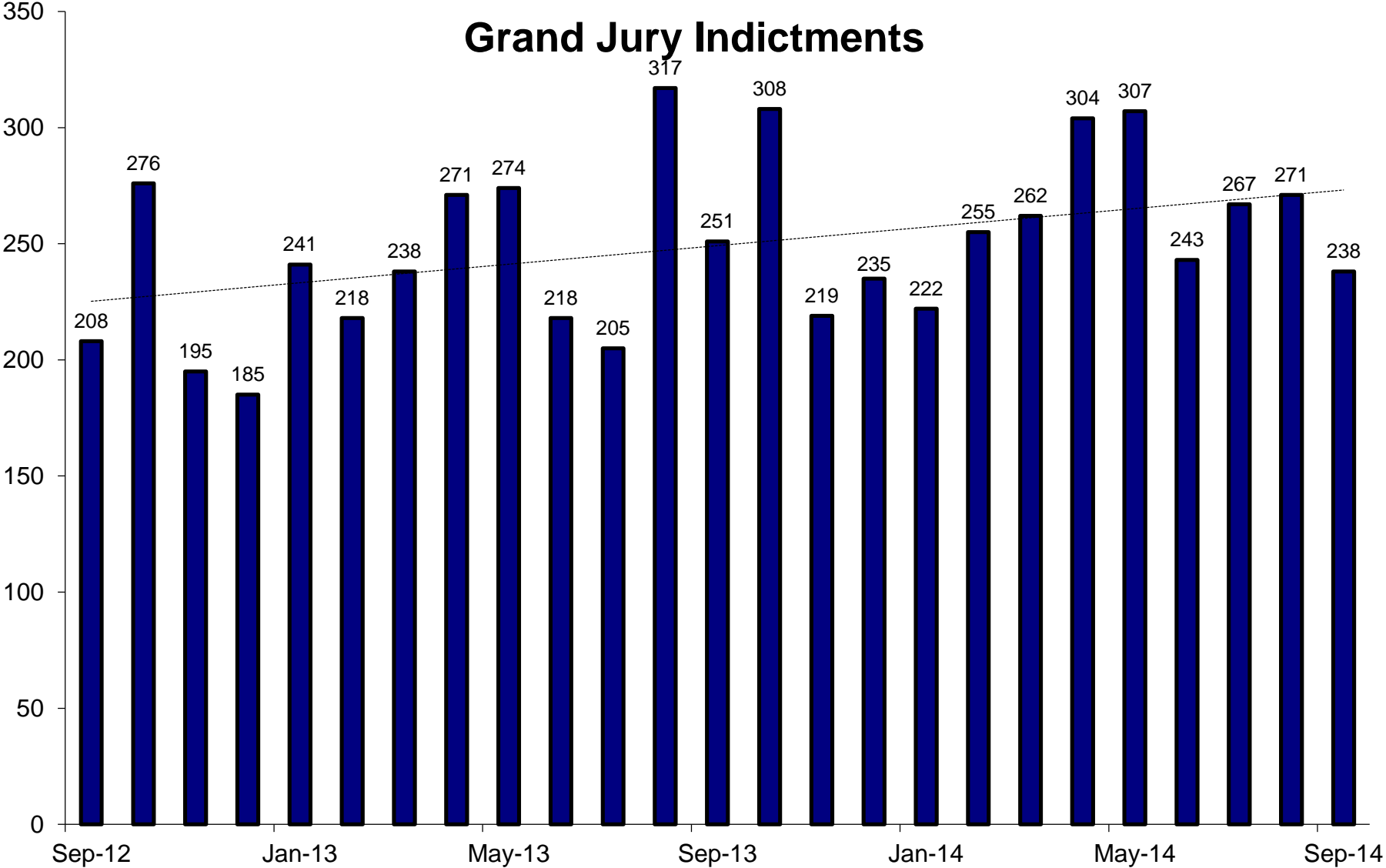


# Disposition of Cases Terminated

Average Monthly Dispositions by Quarter

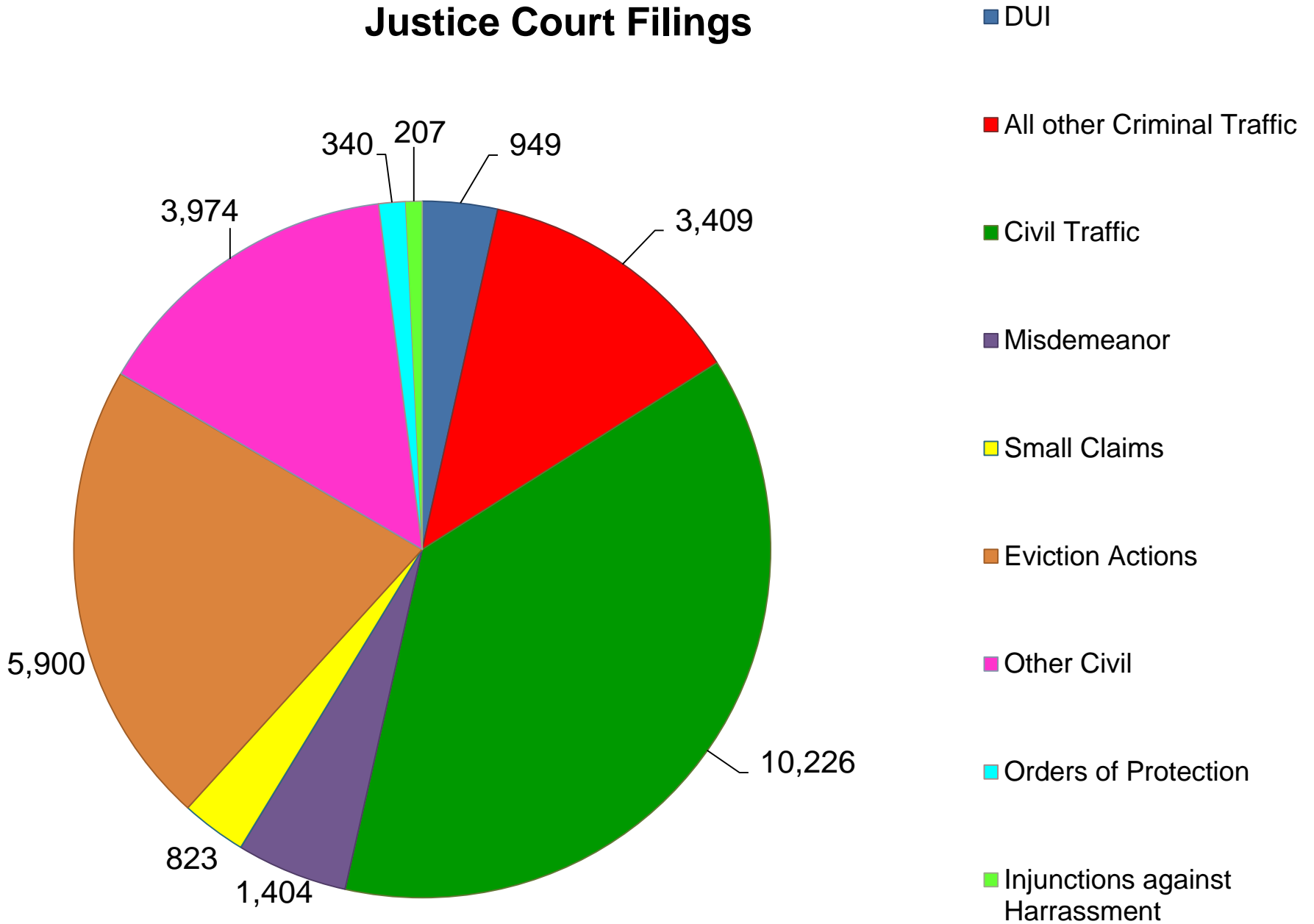


# Grand Jury Indictments



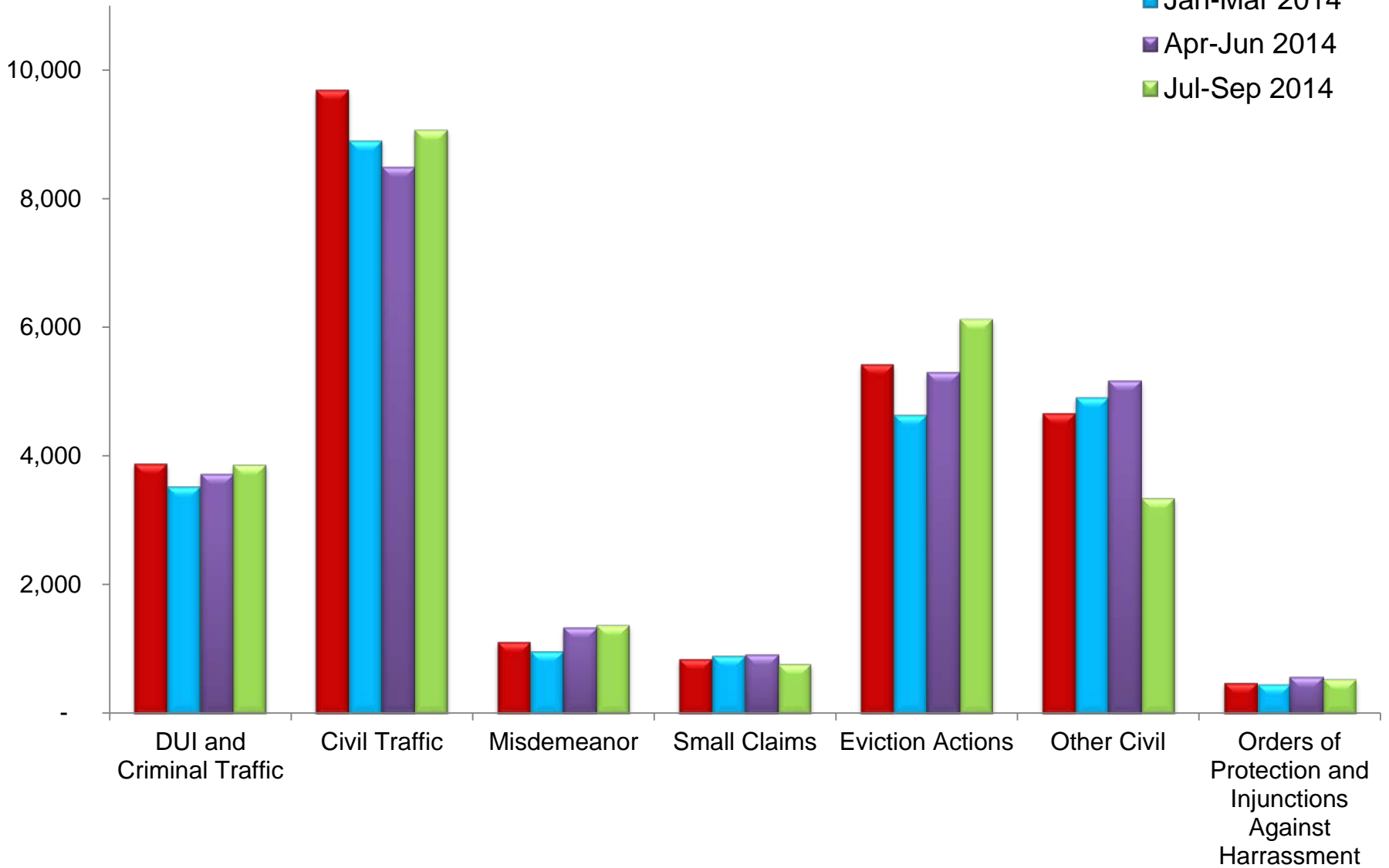
These numbers do not include notices of supervening indictments, non-EDC direct complaints, and juvenile direct complaints.

# Justice Court Filings

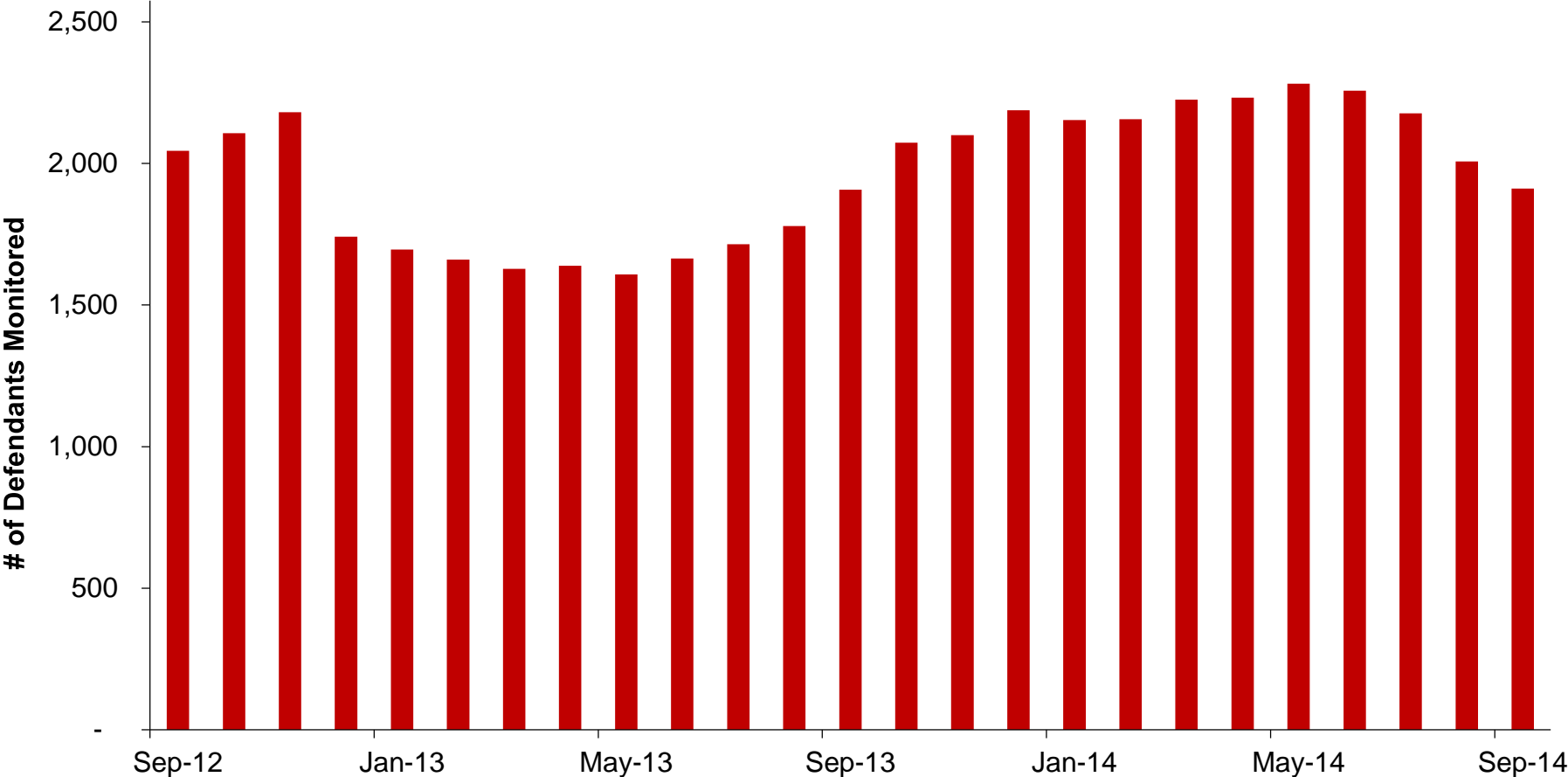


# Justice Court Monthly Filings- Quarterly Average

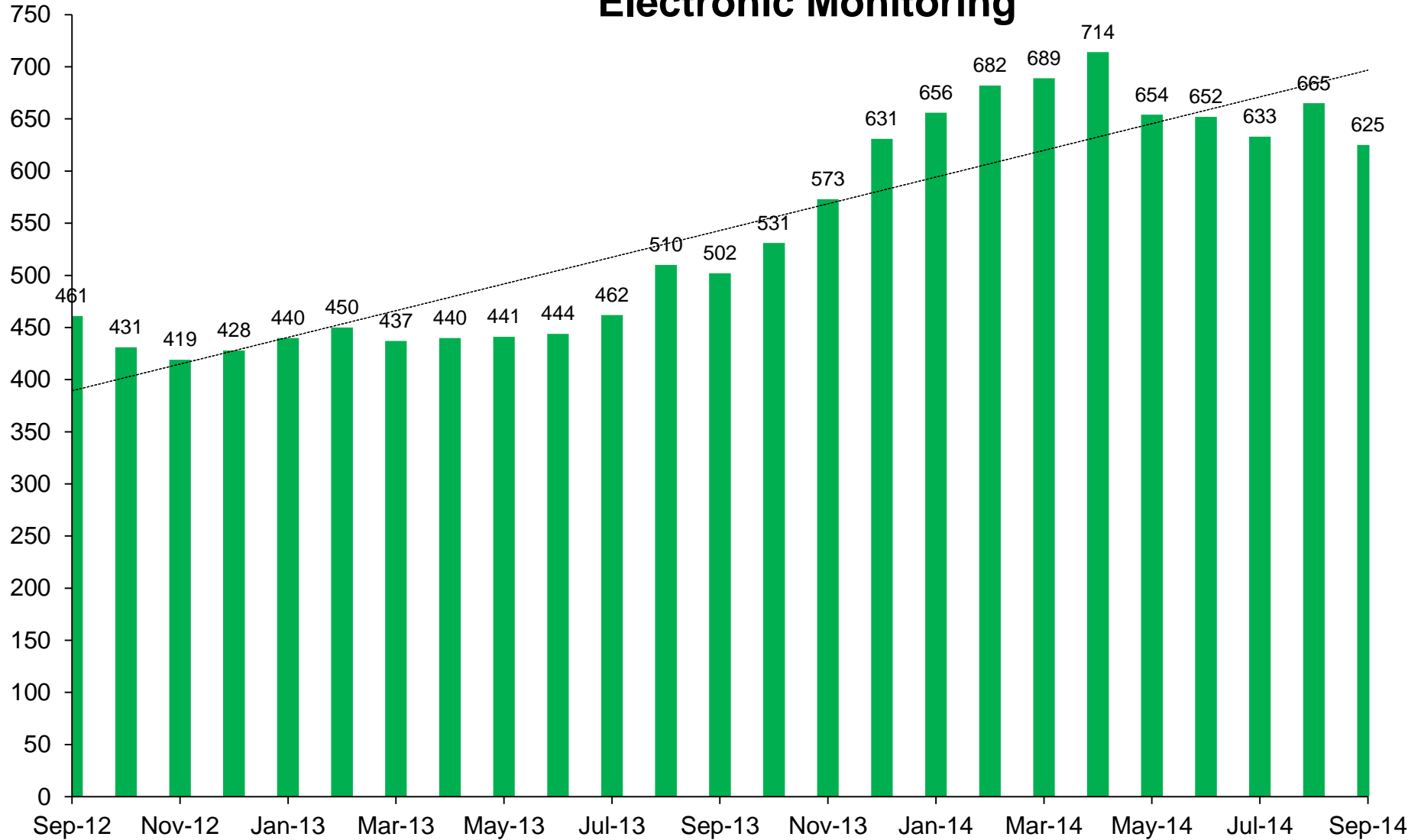
- Oct-Dec 2013
- Jan-Mar 2014
- Apr-Jun 2014
- Jul-Sep 2014



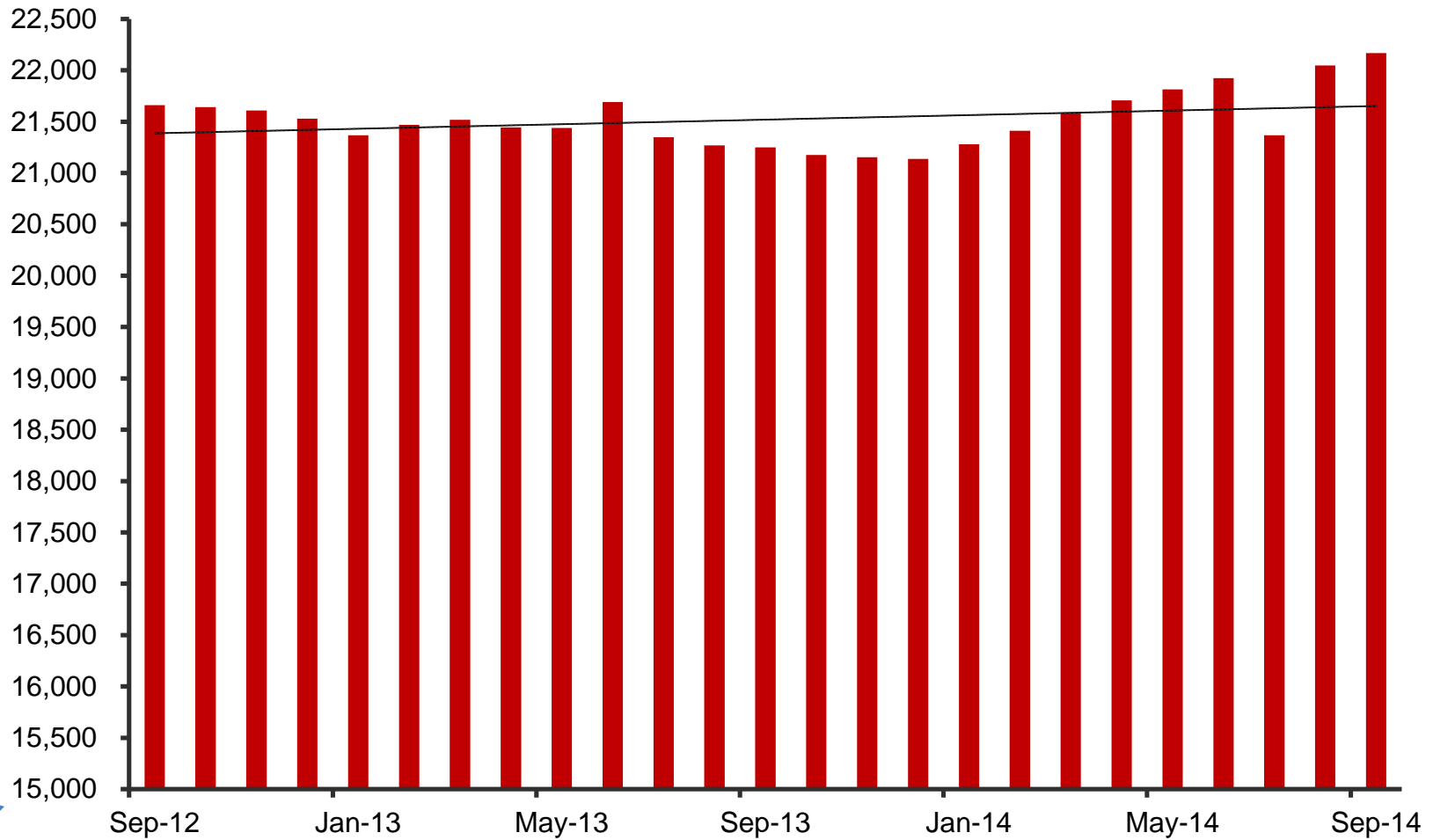
# Pretrial Supervision Defendant Monitoring Unit Average Daily Standard Caseload



# Pretrial Supervision Defendant Monitoring Units Electronic Monitoring



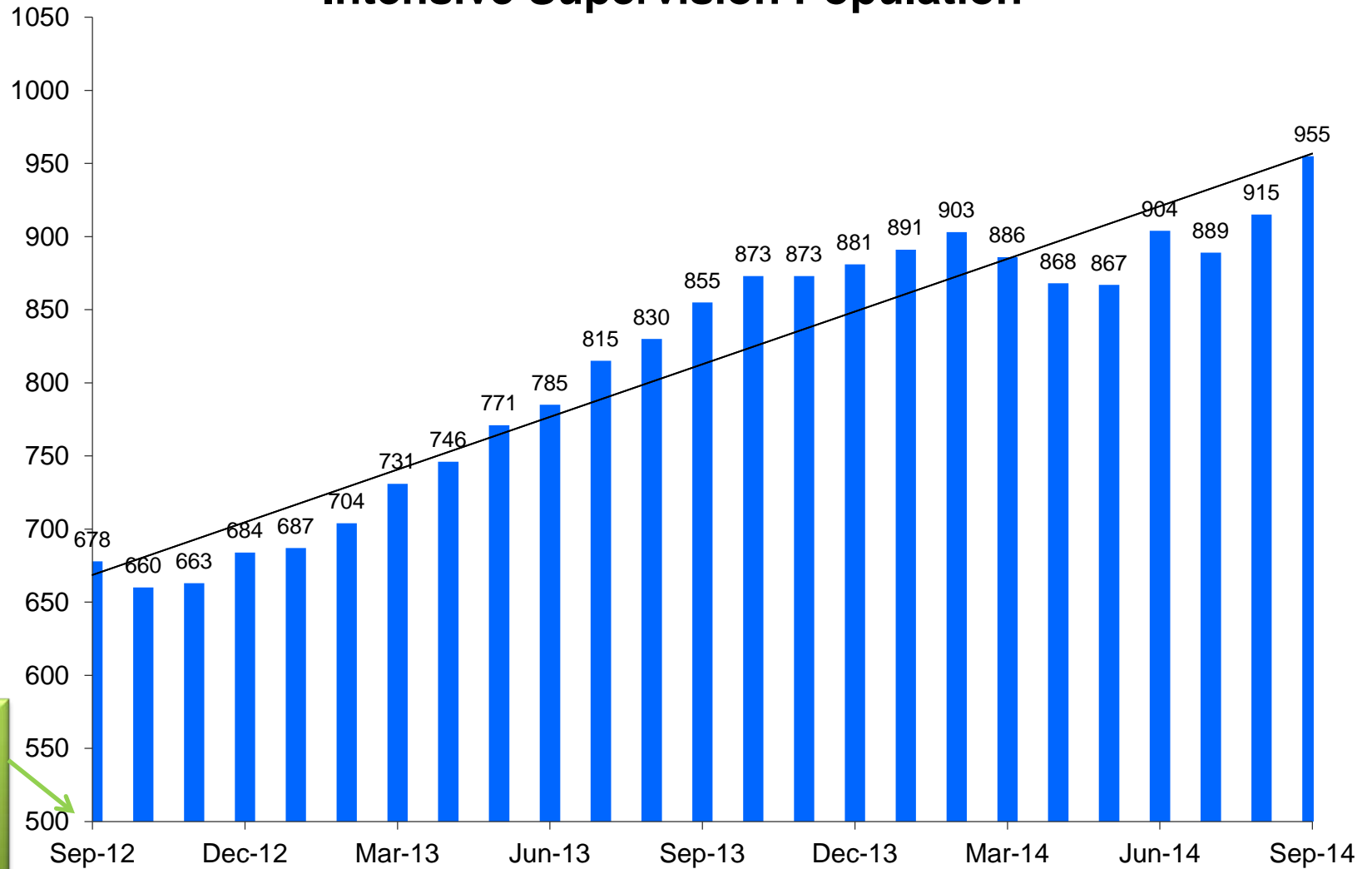
# Adult Probation Standard Supervision Population



**NOTE -**  
Axis range  
does not  
begin at  
zero

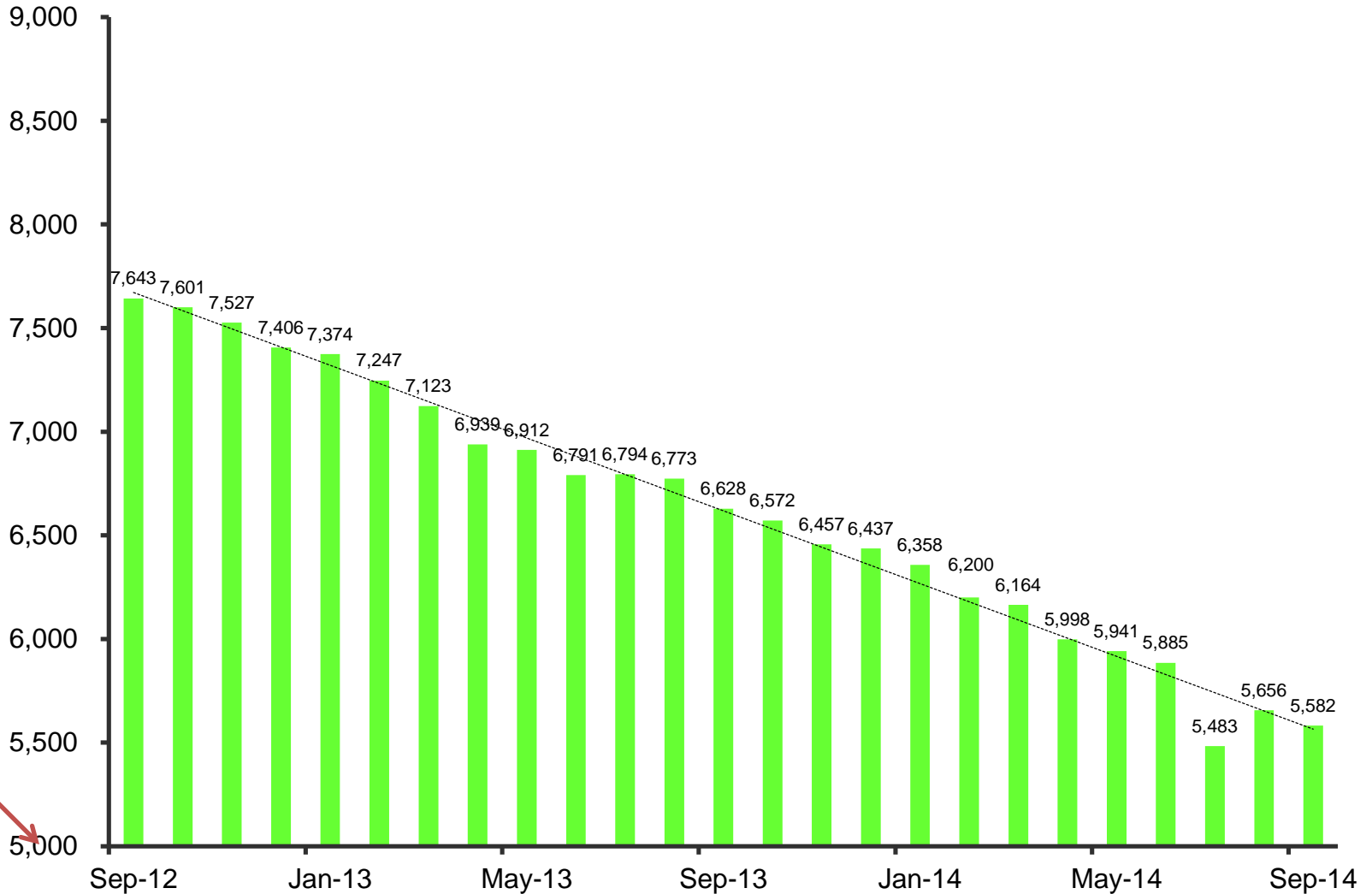


# Adult Probation Intensive Supervision Population



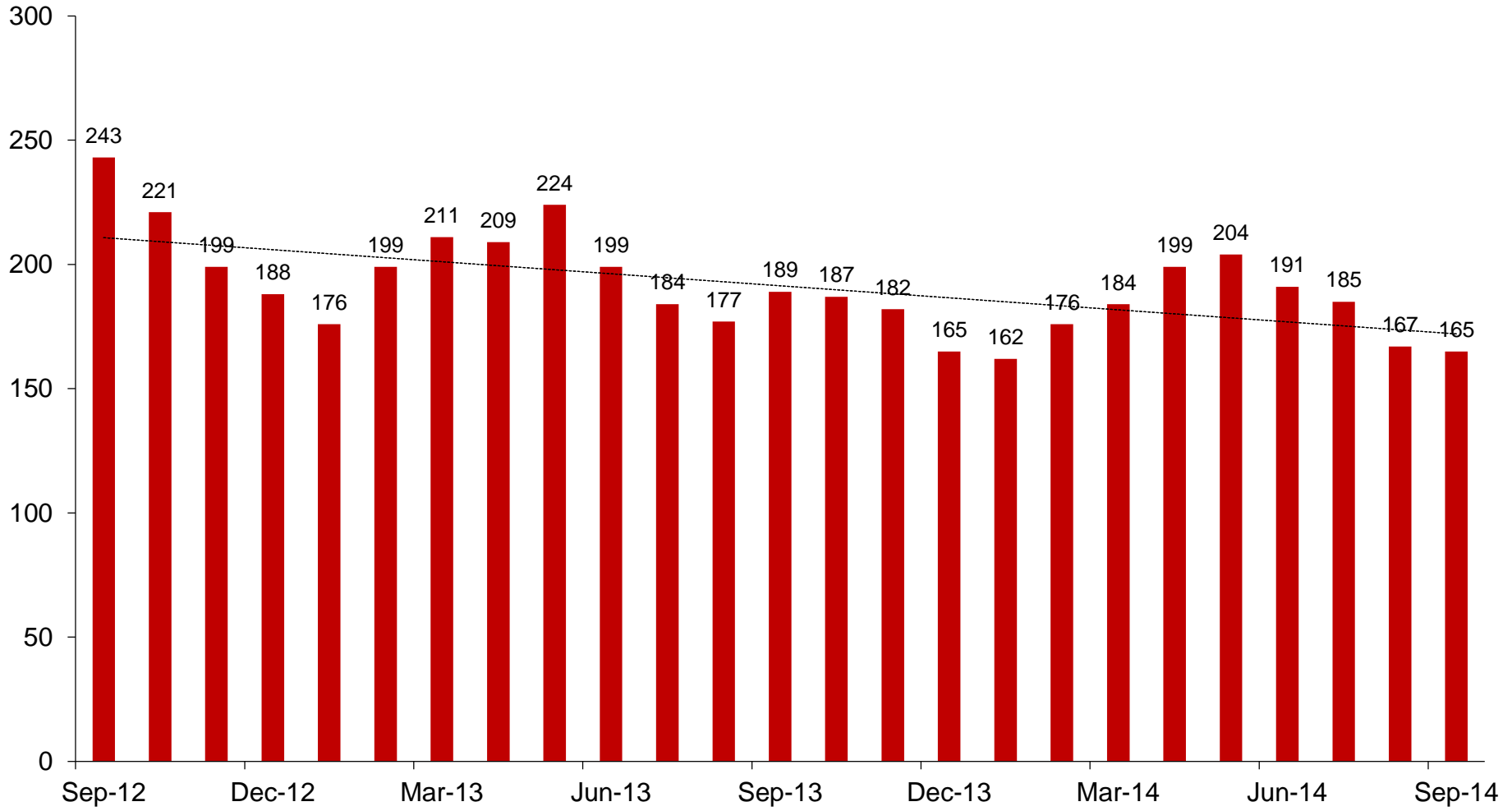
**NOTE -**  
Axis range  
does not  
begin at  
zero

# Adult Probation Unsupervised Population

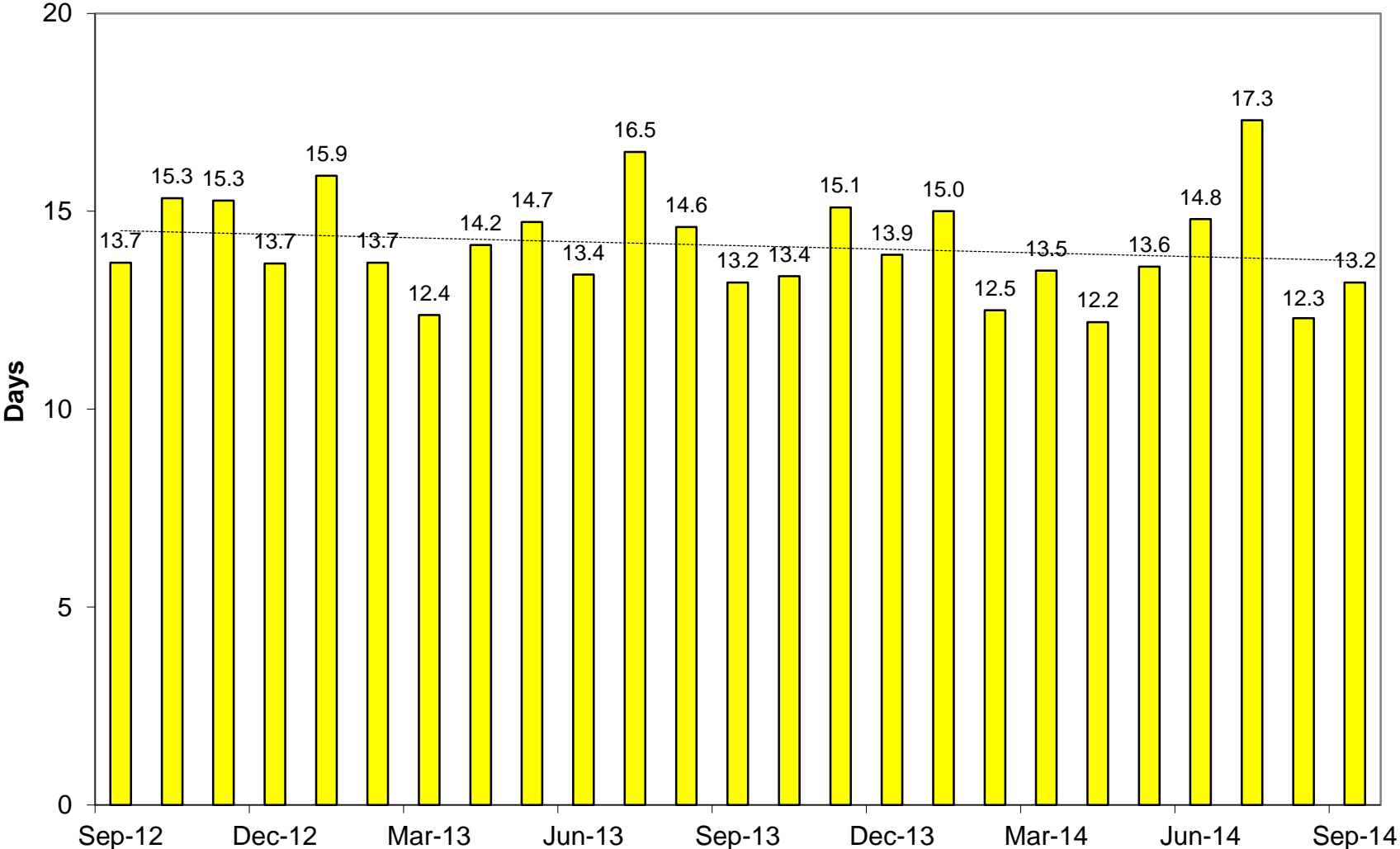


**NOTE –**  
Axis range  
does not  
begin at  
zero

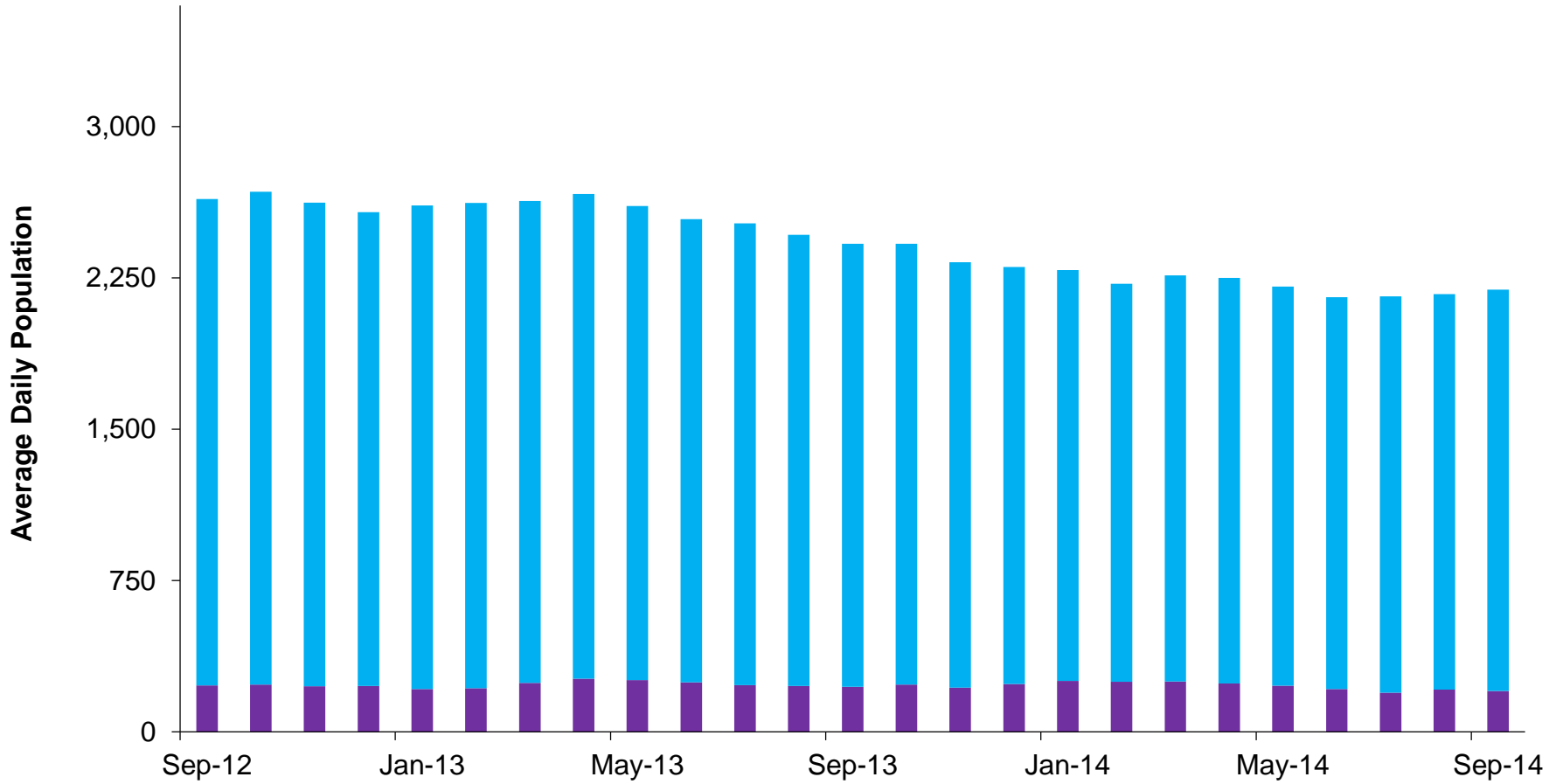
# Juvenile Detention Average Daily Population



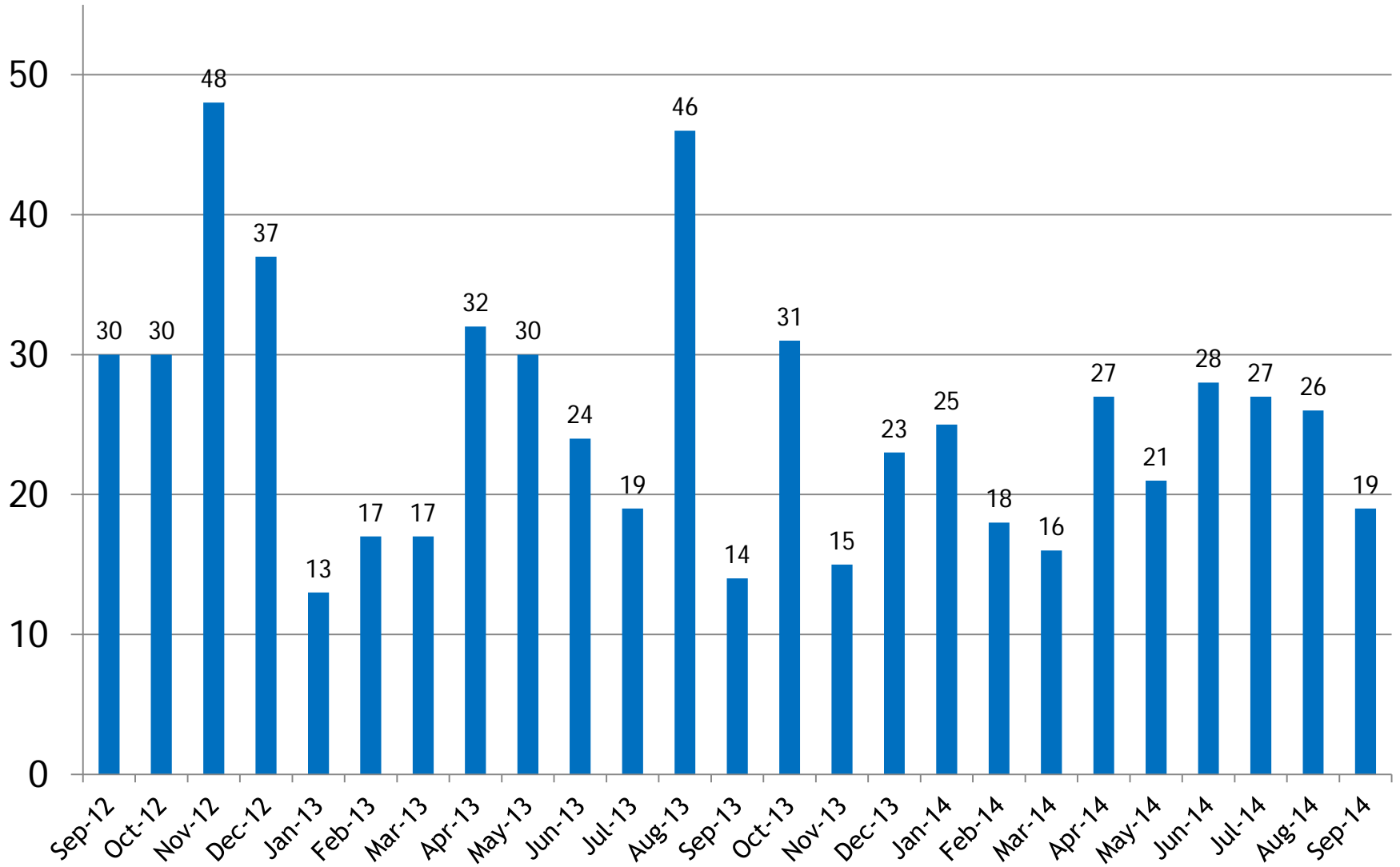
# Juvenile Detention Average Length of Stay



# Juvenile Probation



# Monthly Commitments to Arizona Department of Juvenile Corrections (ADJC)



# Average Daily Juvenile Inmate Population in MCSO - Pretrial

