



Maricopa County
Criminal Justice System

Monthly Performance Report for January 2005

Monthly Averages						
	FY 2001	FY 2002	FY 2003	FY 2004	FY 2005 to-date	Jan. 2005
Sheriff's Office						
Bookings	9,614	9,641	9,875	10,176	9,916	10,443
Average Daily Population	7,059	7,557	8,044	8,657	8,955	8,729
Avg Length of Stay (in days)	22.4	23.8	24.4	26.0	27.8	25.9
Superior Court						
Filings	2,342	2,515	2,904	3,062	2,747	2,850
Terminations	2,259	2,367	2,330	2,612	2,687	2,825
Clearance Rate	96%	94%	80%	85%	98.1%	99.1%
Active Pending Inventory	7,990	7,419	8,123	9,106	9,865	9,911
Trials Completed	69	61	59	42	50	49
Trial Rate	2.9%	2.4%	2%	1.4%	1.8%	1.7%
Adult Probation						
Pretrial General Supervision	544	609	700	974	1,001	1,031
Pretrial Intensive Supervision	362	356	331	672	821	782
Pretrial Electronic Monitoring	51	78	97	154	160	162
Standard Probation Supervision	22,788	23,582	23,371	21,939	22,701	23,046
Intensive Probation Supervision	1,666	1,564	1,267	1,048	1,468	1,459
Juvenile Probation and Detention						
Avg Daily Detention Pop	400	407	401	431	430	398
Avg Length of Stay (in days)	14.1	14.7	15.1	16.6	19.0	19.7

Criminal Justice System News

Adult Incarceration: *Bookings and the average daily jail population rose in January. This is a typical trend witnessed annually after the holiday season.*

The overall average length of jail stay was at its lowest rate for FY05 in January – 25.91 days. Accordingly, all measures of length of stay fell between December and January. Agency holds went from 79.54 days to 74.13 days; overall pretrial went from 8.76 days to 7.58 days; sentenced went from 35.62 days to 29.21 days. Both components of pretrial also saw a decrease. Felony pretrial was 12.75 days in December, falling to 11.33 days in January; misdemeanor pretrial was 4.40 in December and fell to 3.78 in January.

Filings & Case Processing: *Filings and terminations into Superior Court rose in January to nearly the same level, resulting in a clearance rate of 99.1%. The active pending inventory rose in January to the highest level since September while arraignment levels fell slightly from December numbers.*

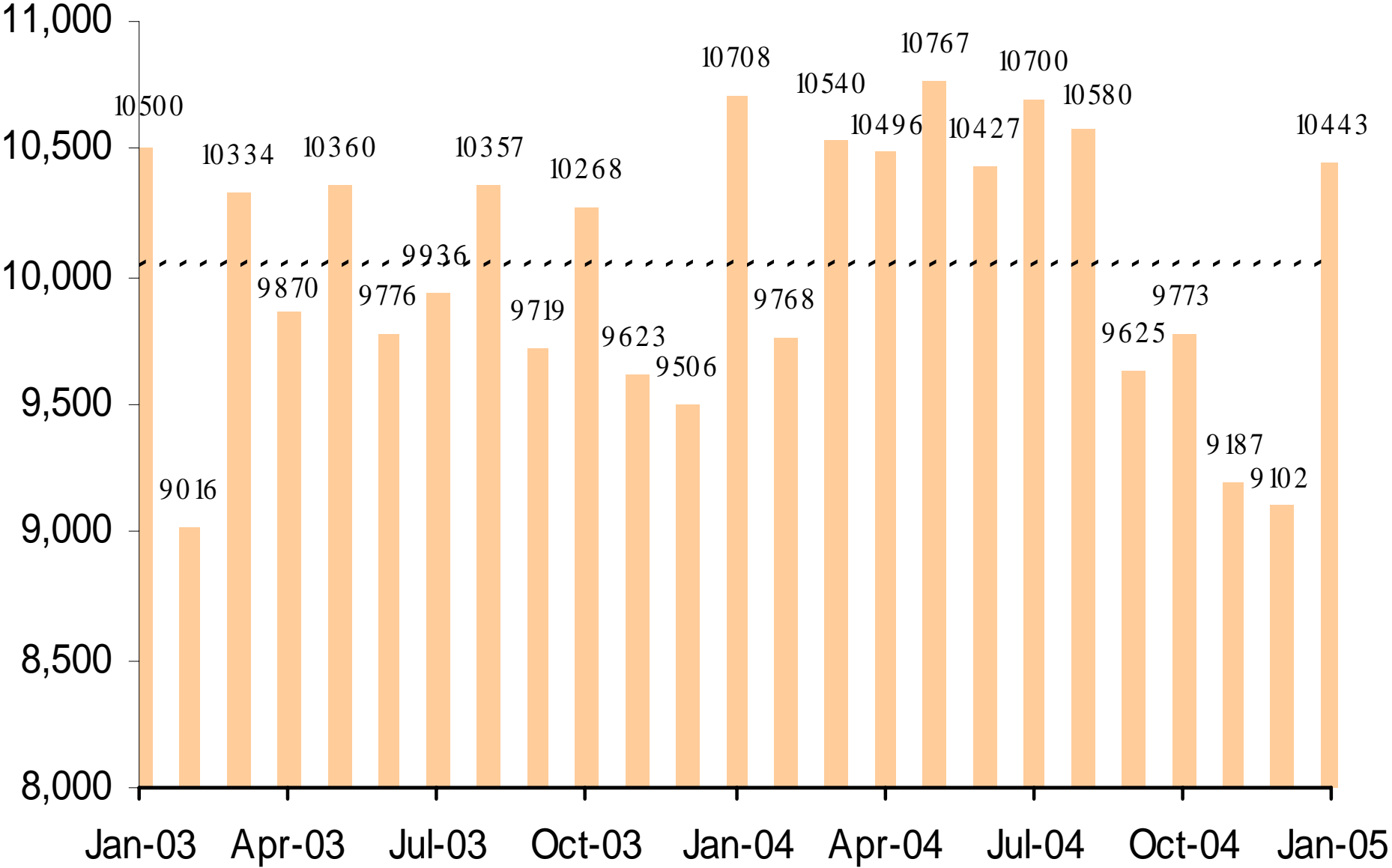
Adult Probation: *Pretrial numbers for general supervision increased in January (1,031) to the highest levels since February 2004. January's level of pretrial intensive supervision is the lowest this Fiscal Year. It is noted due to composition of caseloads that workload at present time appears to be at a steady level.*

Levels of standard probation supervision increased to 23,046 in January, the highest level since December 2002. Intensive probation supervision decreased in January (1,459) compared to December (1,473).

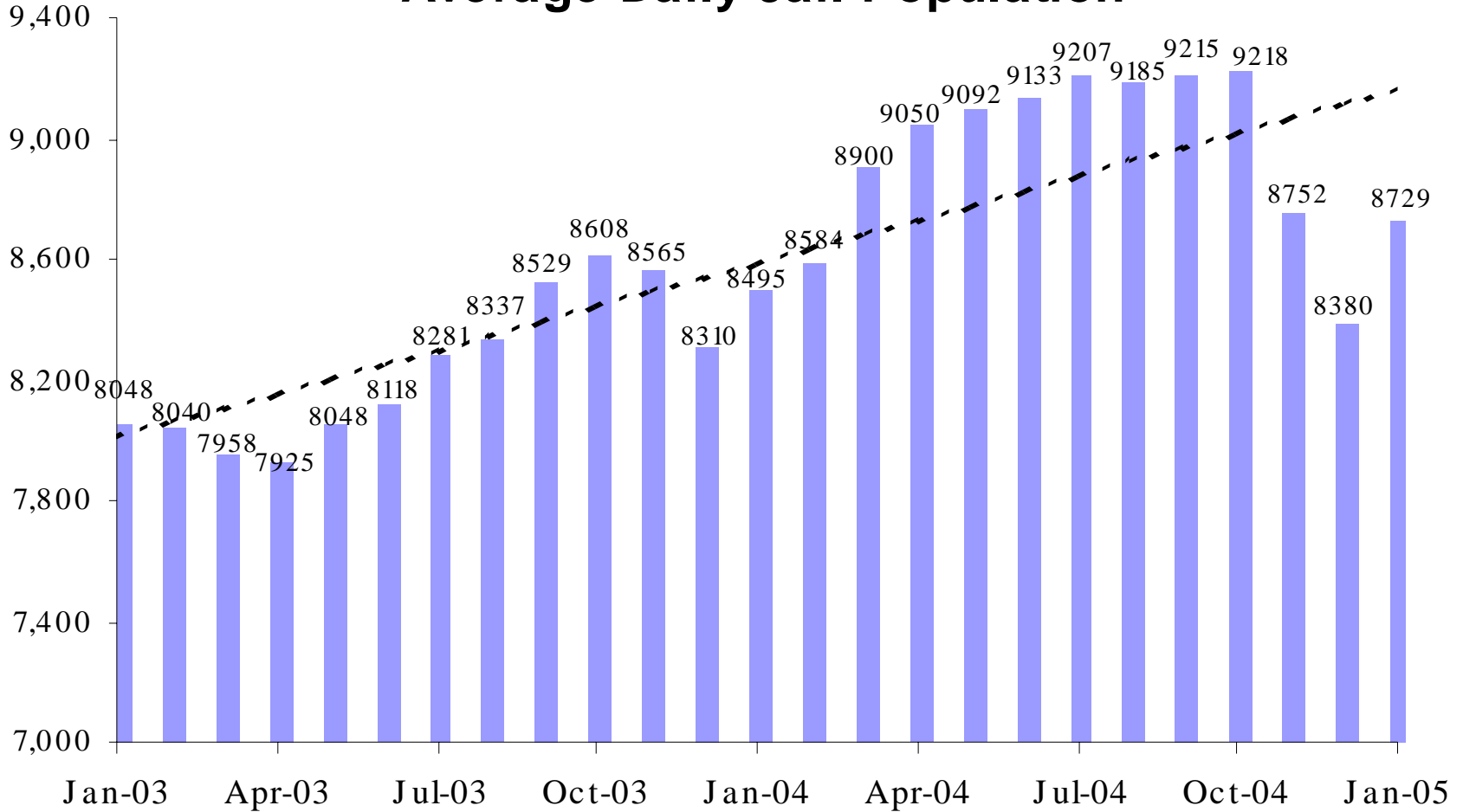
Juvenile Detention: *The average daily population continued the decrease seen since October. The January number of 398 is the first time Juvenile ADP has been below 400 since August 2003. However, the average length of stay rose to 19.7 days in January, the highest level since at least May 1998.*

A criminal justice system-wide goal is to enhance the utility and timeliness of management information on case processing, in an effort to help agencies effectively address current events. An interagency committee of McJustice meets regularly to accomplish this and develop this report. Input from readers is welcomed. Please contact Amy Rex at 602-506-1310.

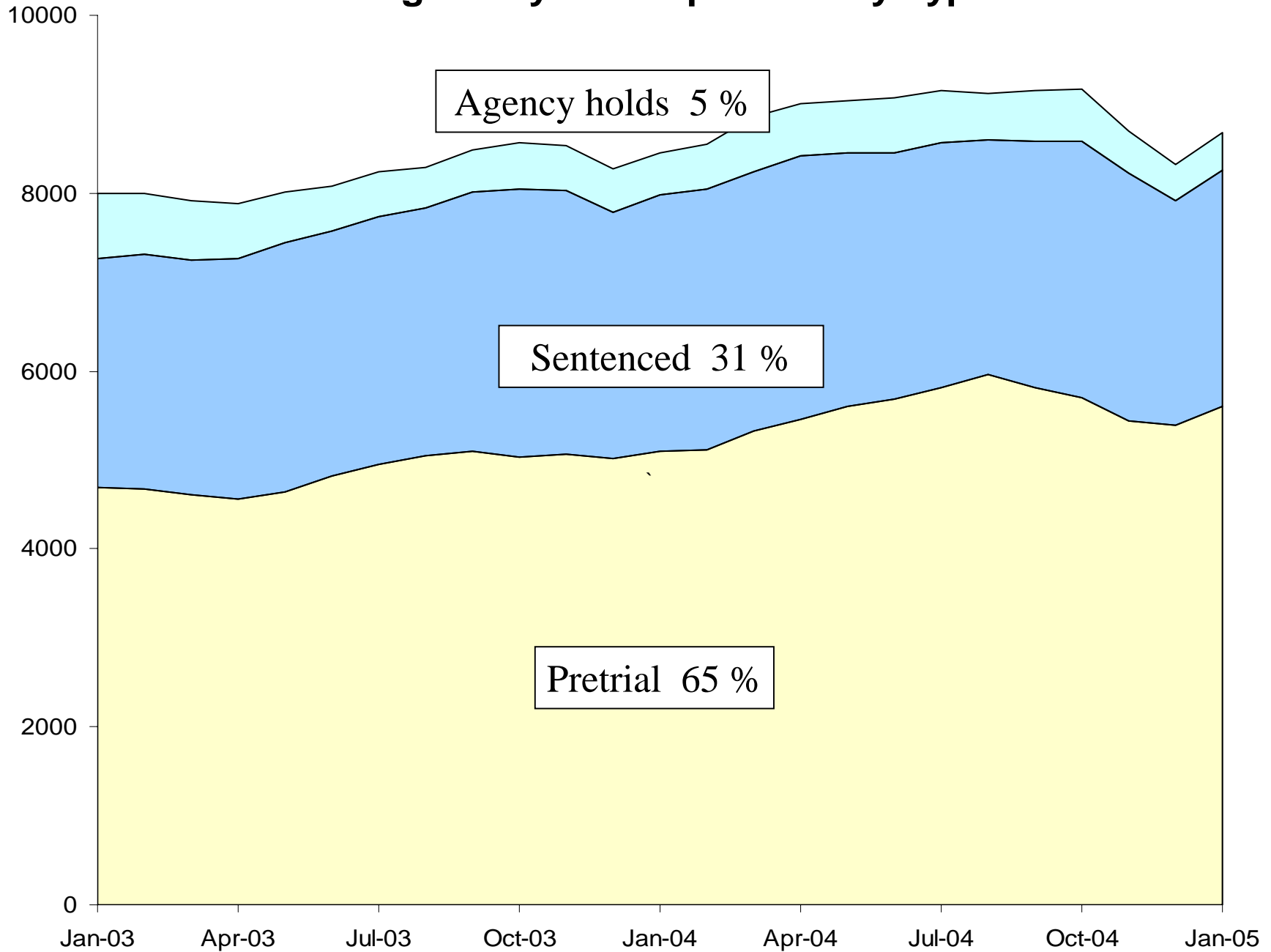
Jail Bookings



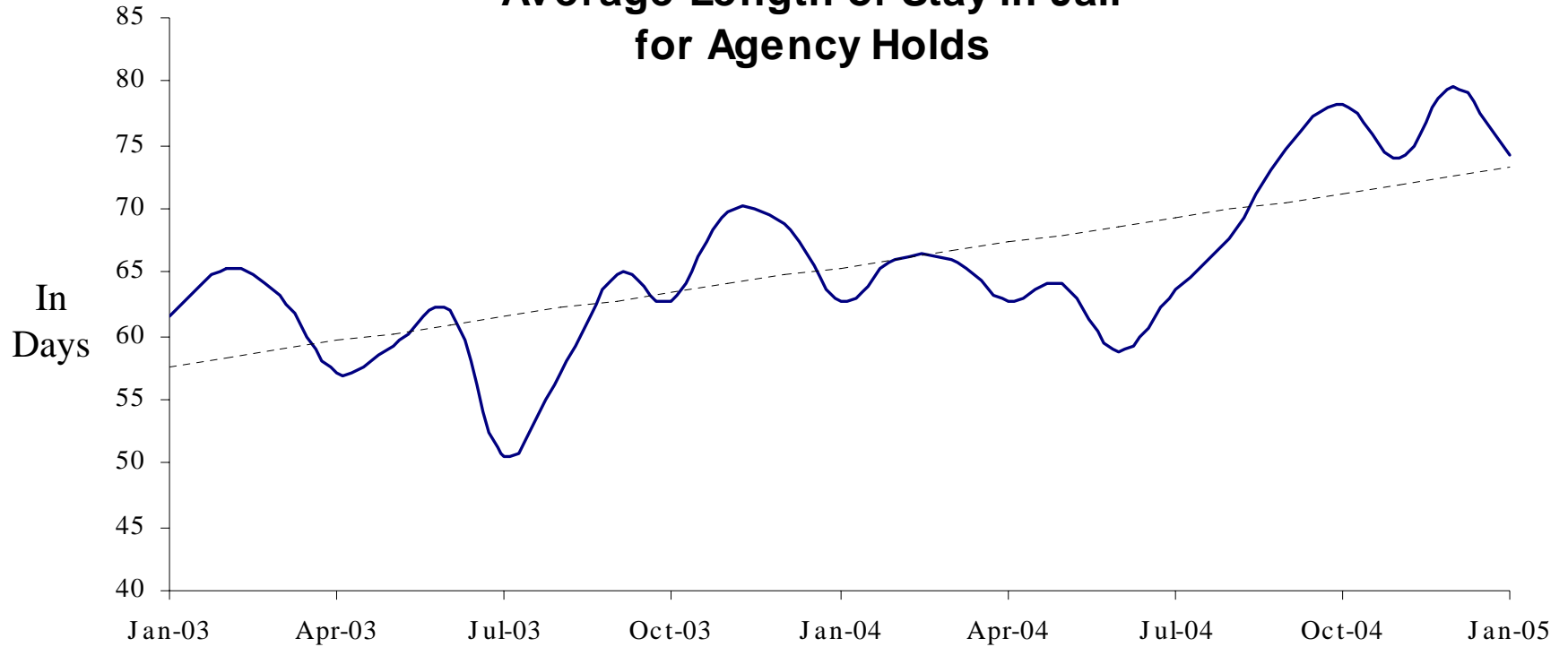
Average Daily Jail Population



Average Daily Jail Population by Type

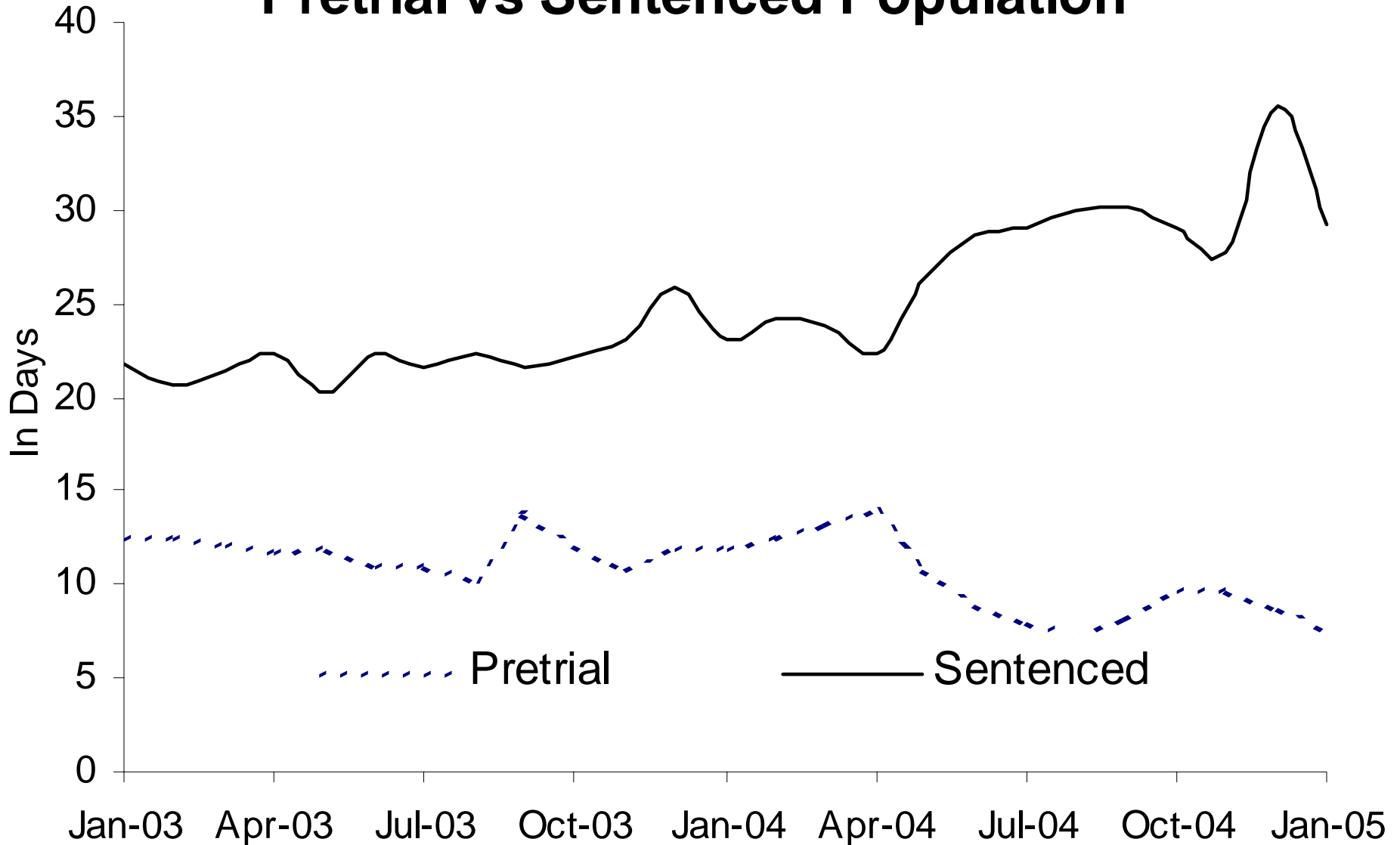


Average Length of Stay in Jail for Agency Holds

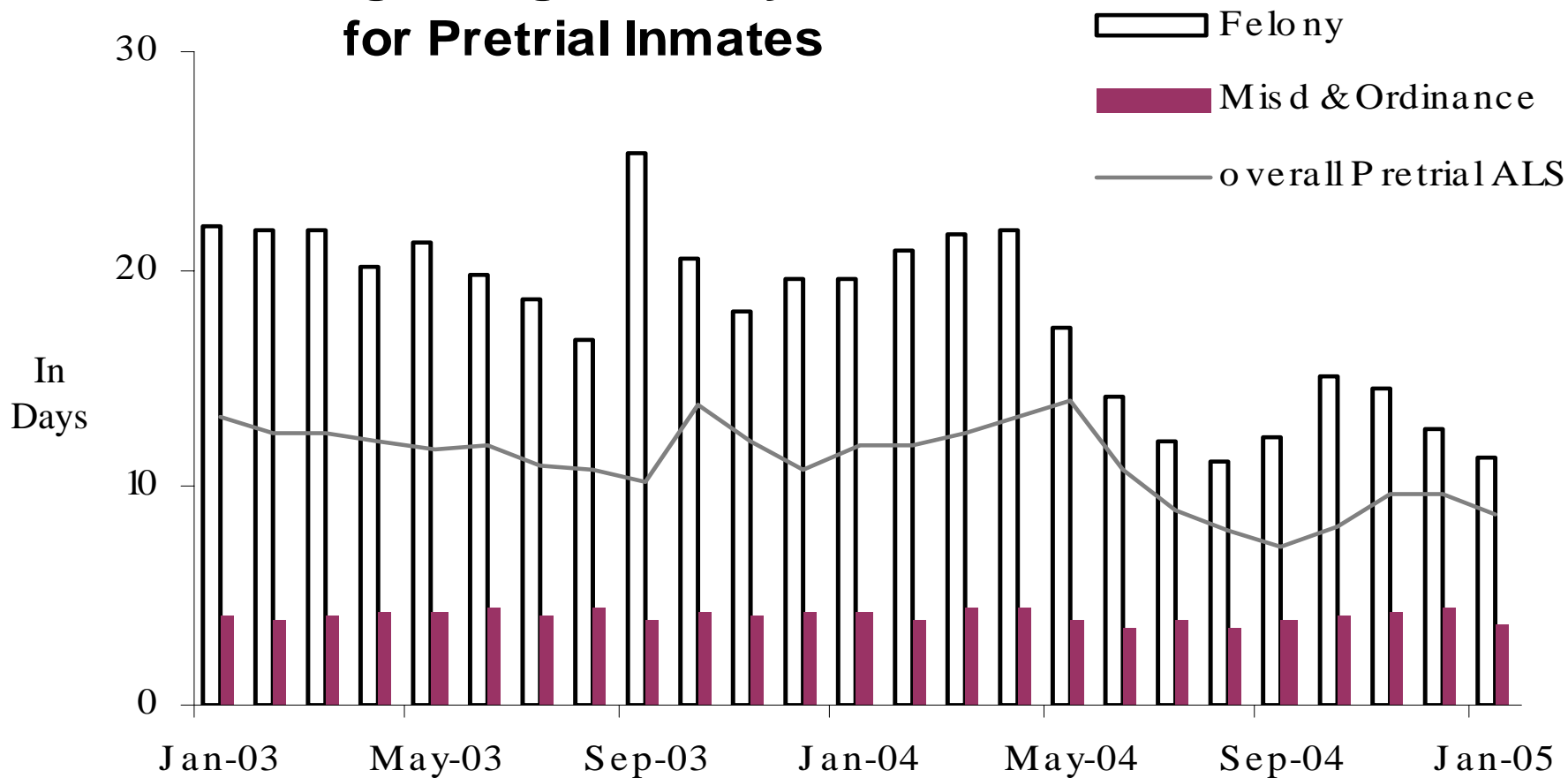


68% Dept of Corrections, 19% Federal agencies, 13% other

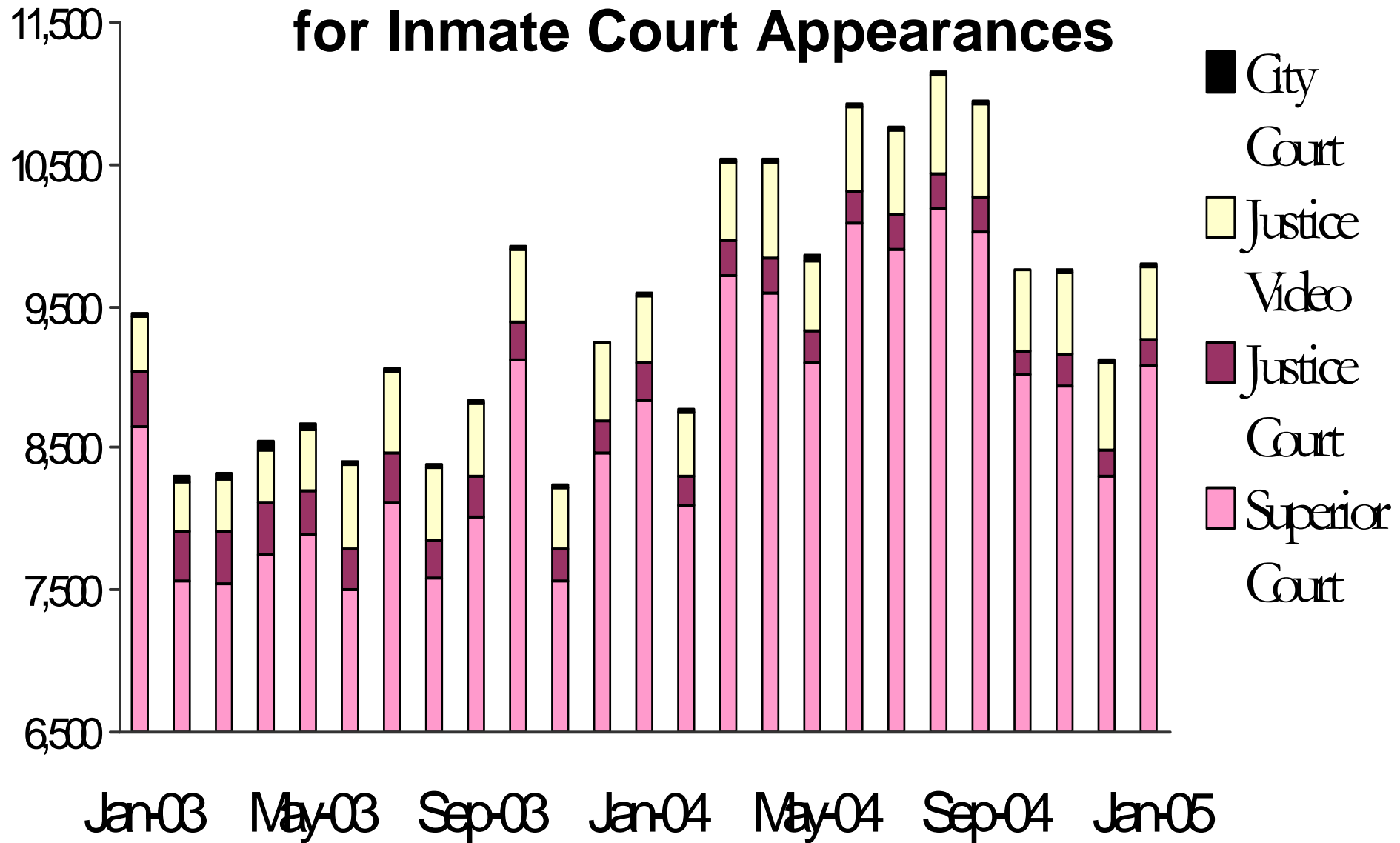
Average Length of Stay in Jail Pretrial vs Sentenced Population



Average Length of Stay in Jail for Pretrial Inmates



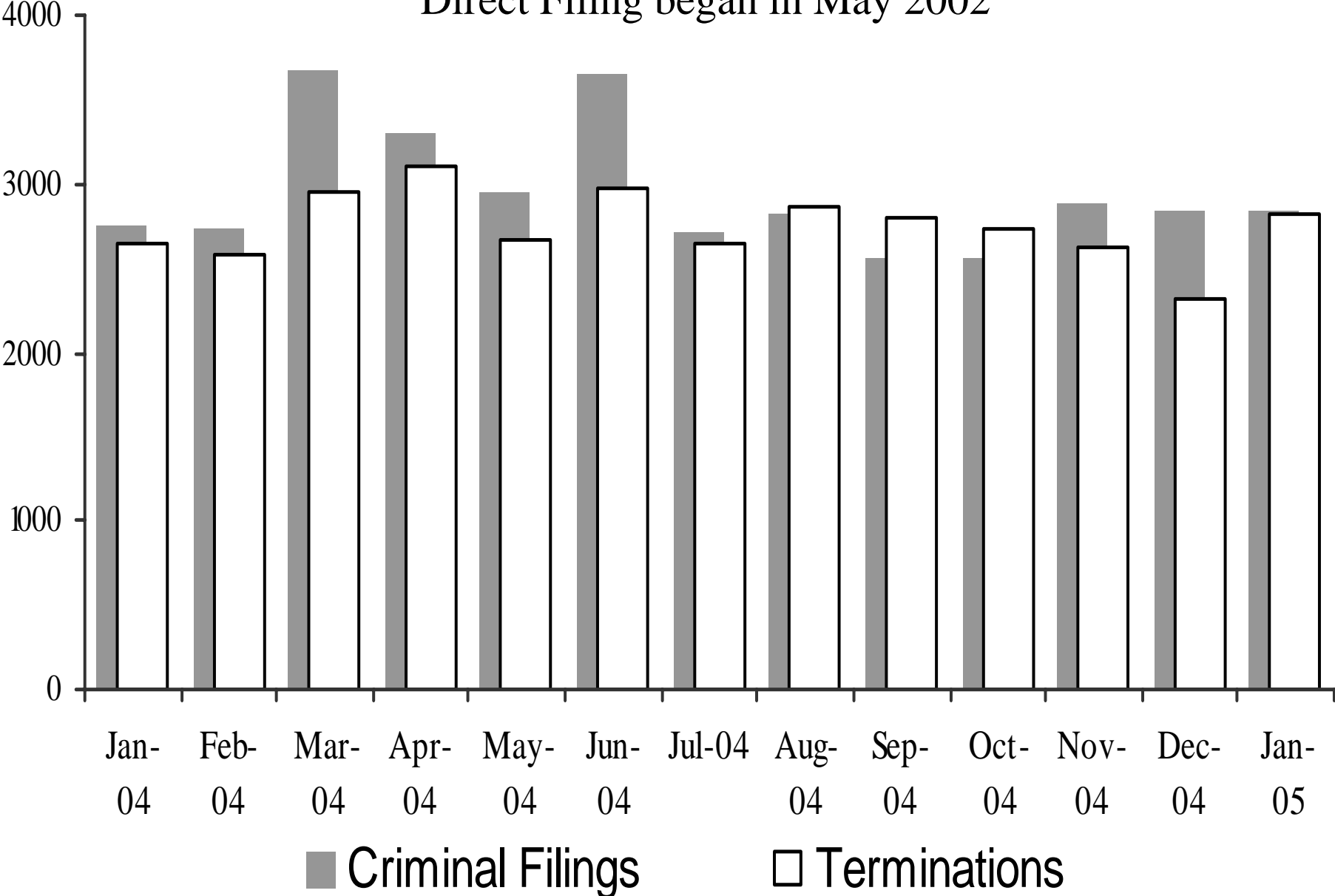
Sheriff's Office Transports for Inmate Court Appearances



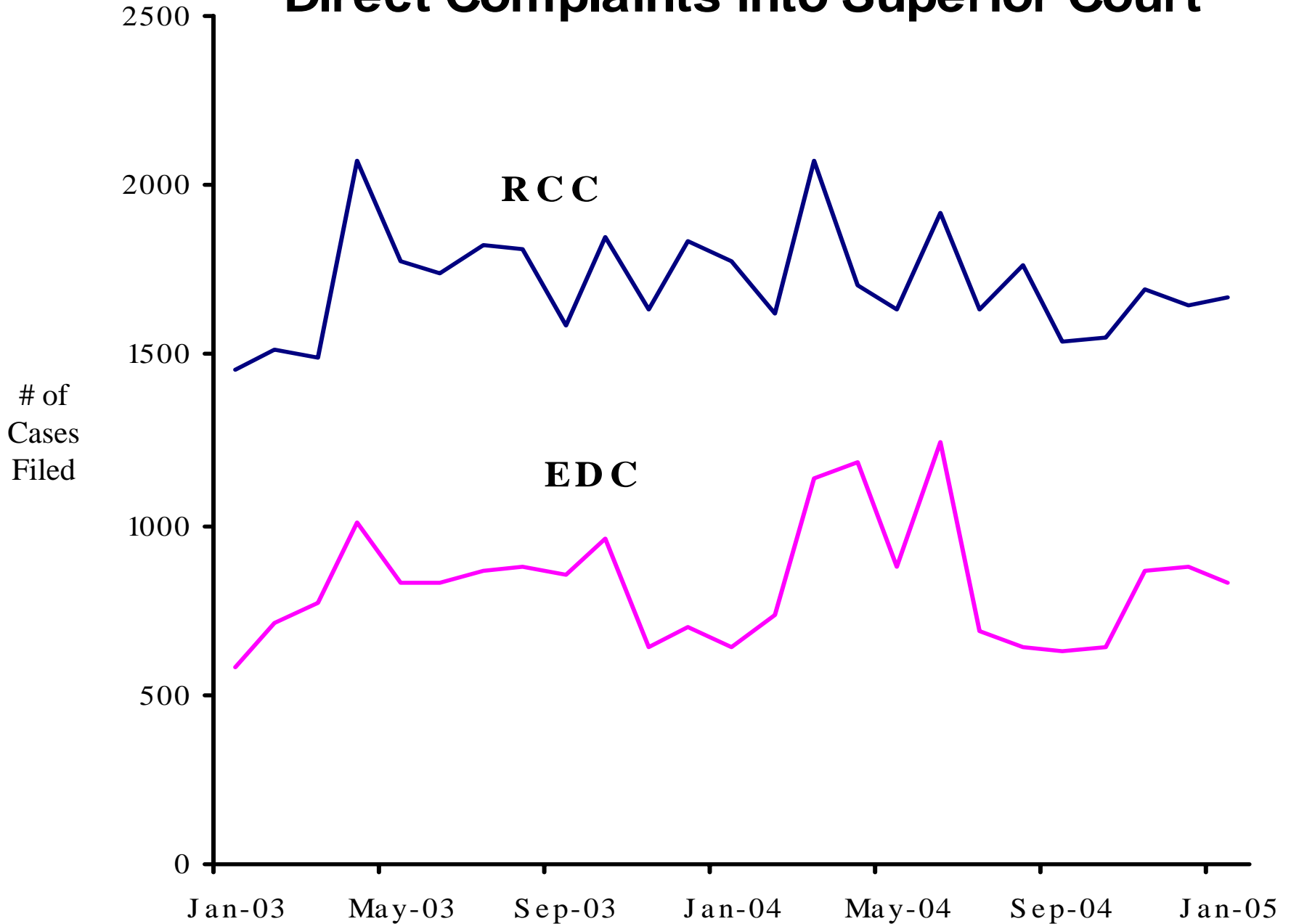
Since Direct Filing into Superior Court began May 2002, remaining transports to Justice Courts are for misdemeanor cases.

Superior Court Filings and Terminations

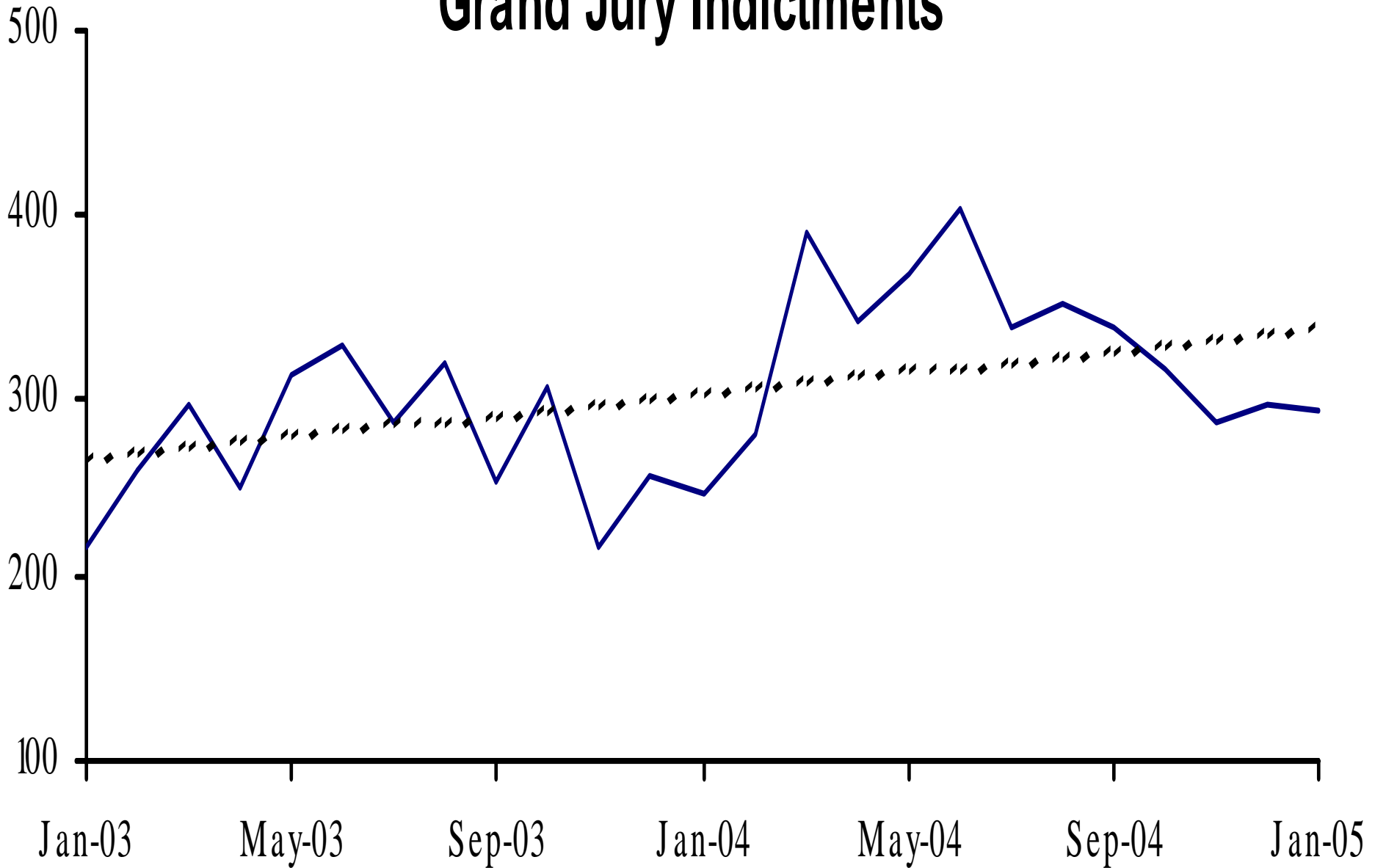
Direct Filing began in May 2002



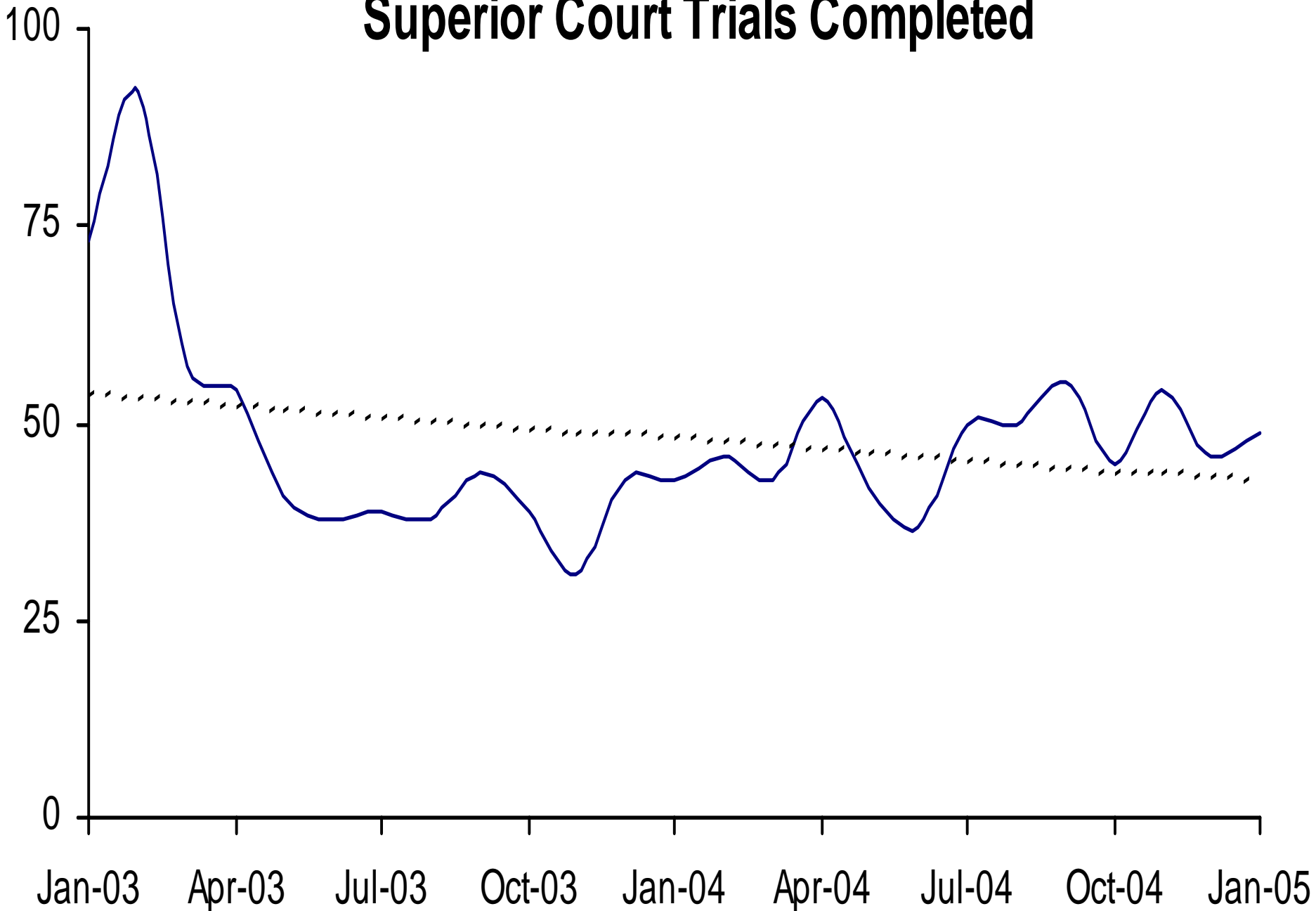
Direct Complaints into Superior Court



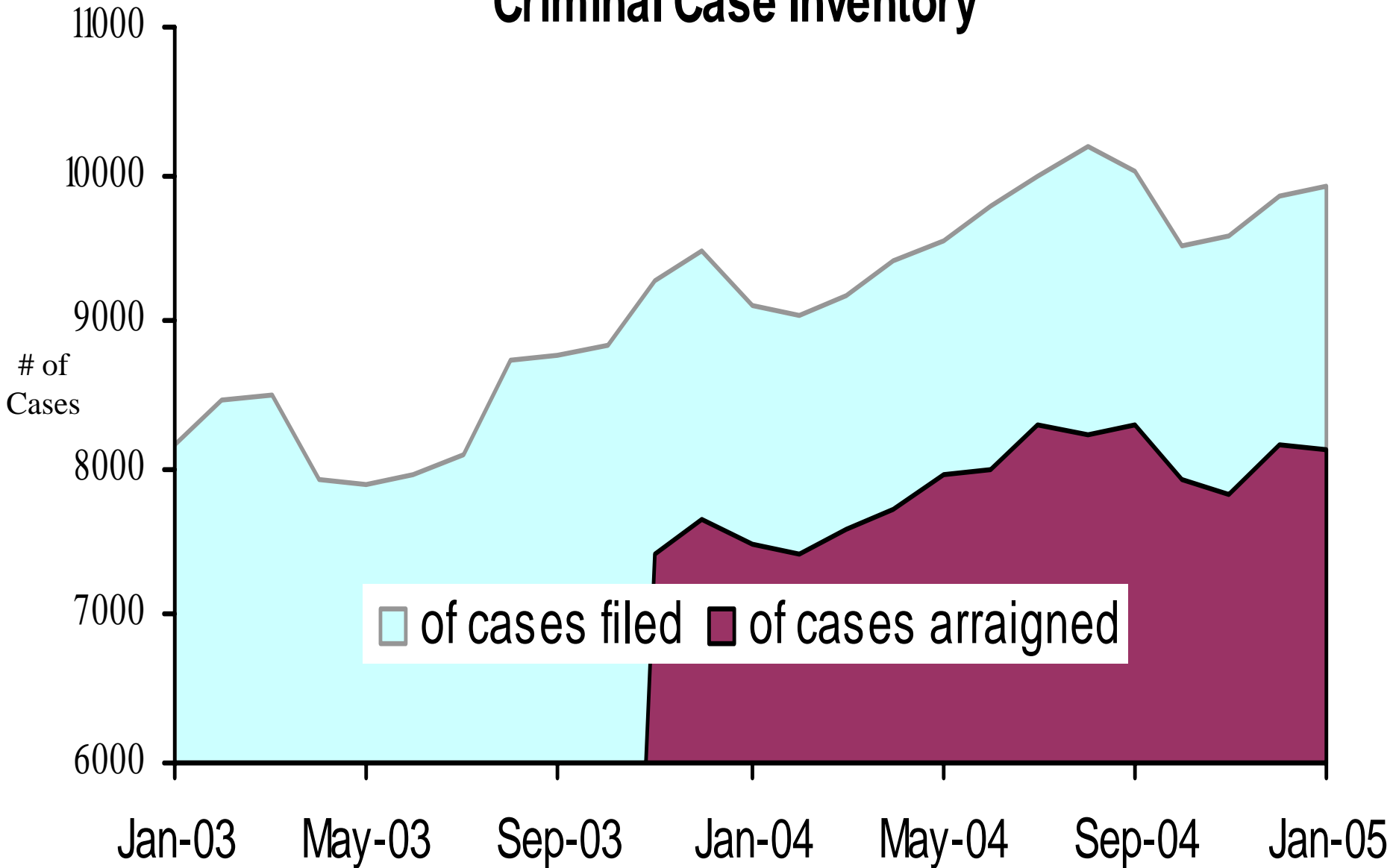
Grand Jury Indictments



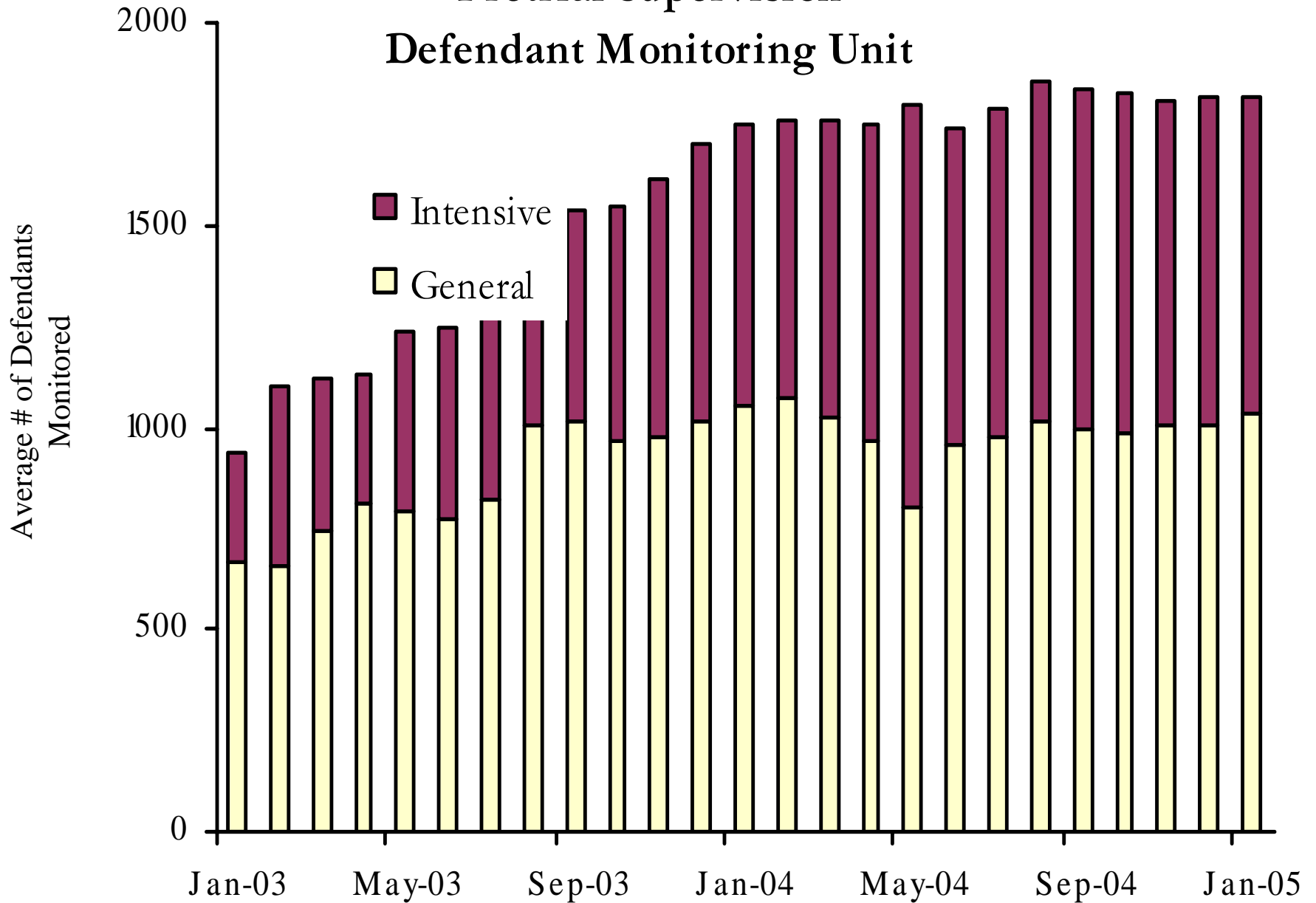
Superior Court Trials Completed



Active Pending Criminal Case Inventory

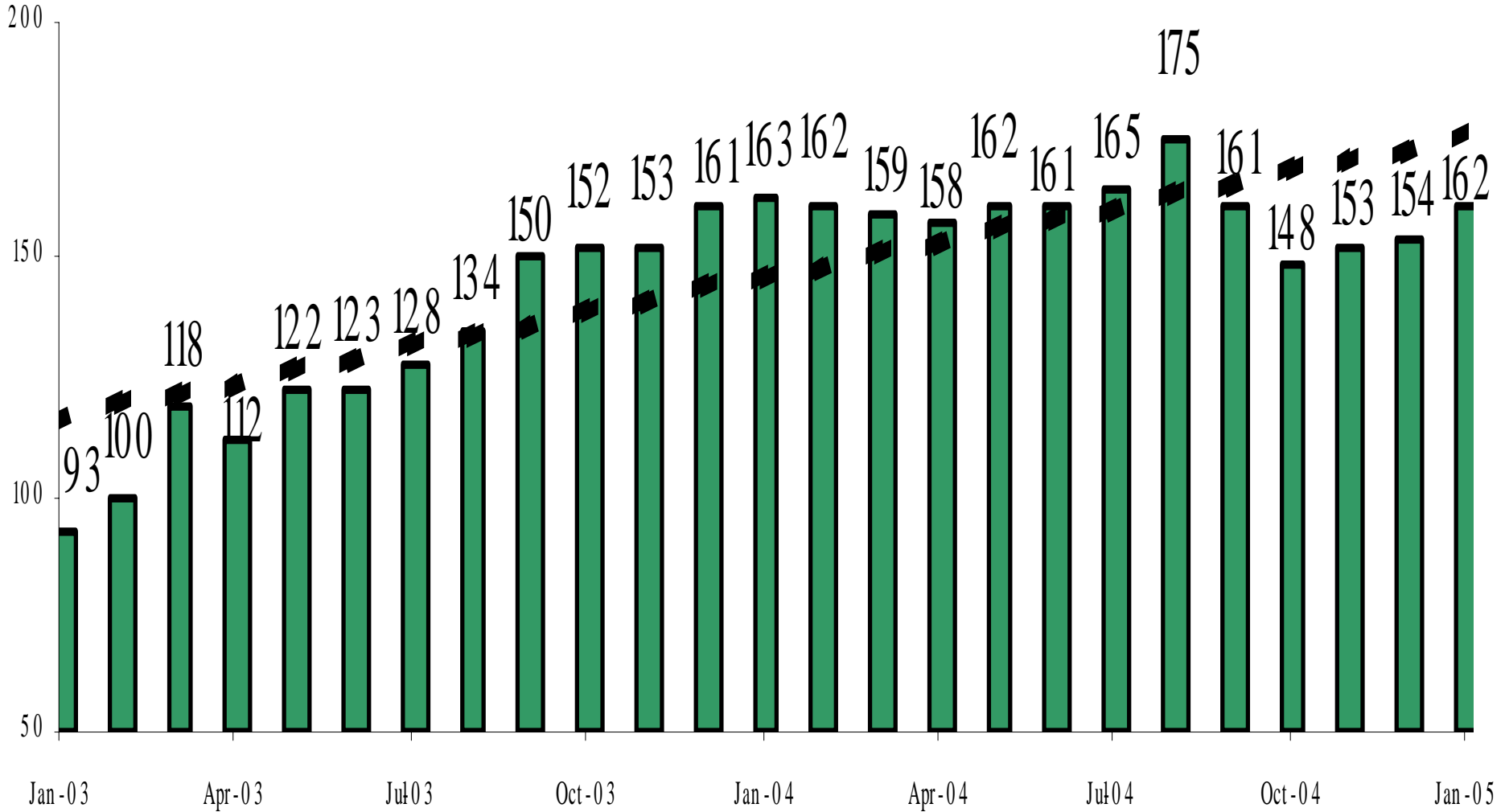


Pretrial Supervision Defendant Monitoring Unit



Pretrial Supervision

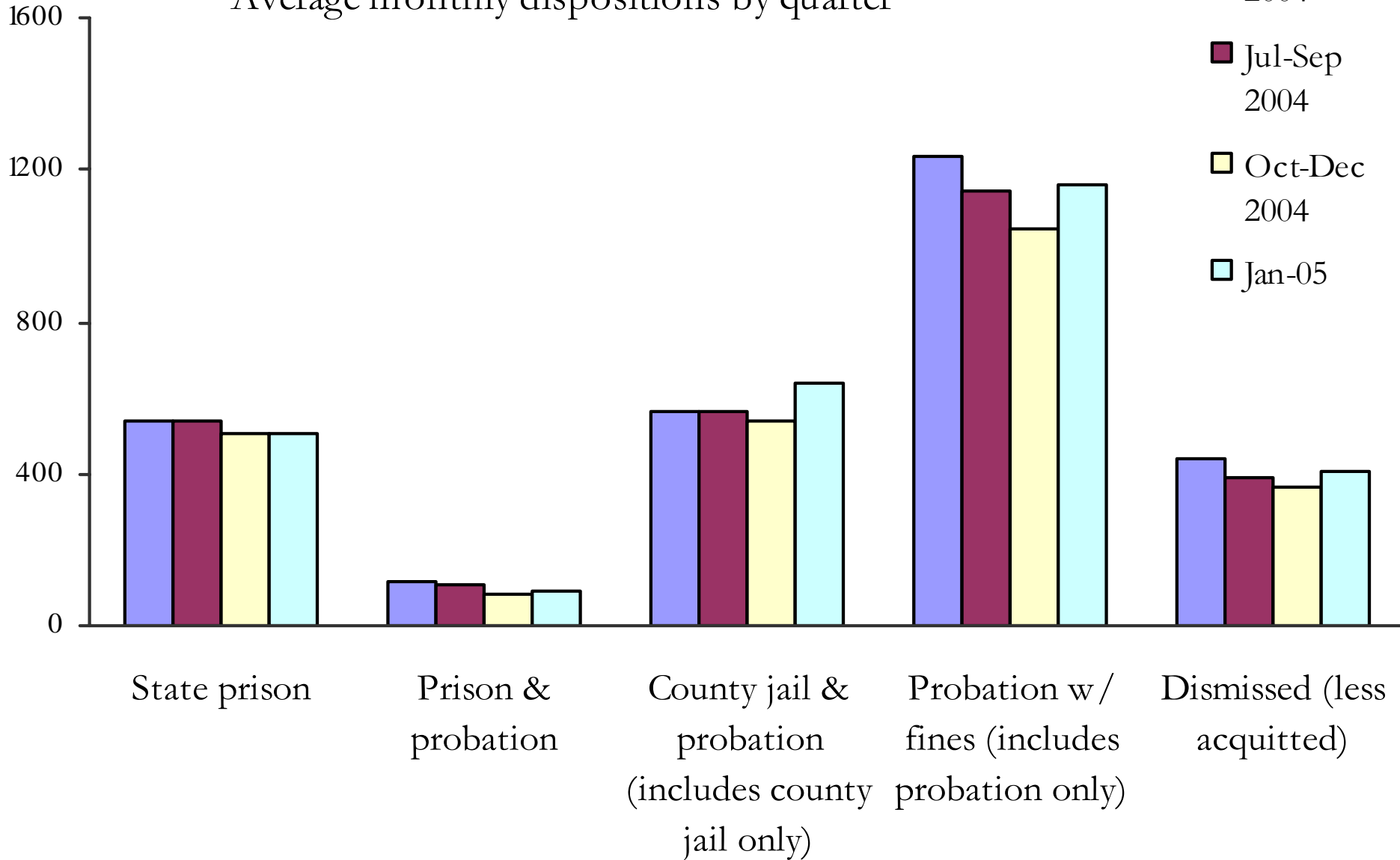
Defendants on Electronic Monitoring



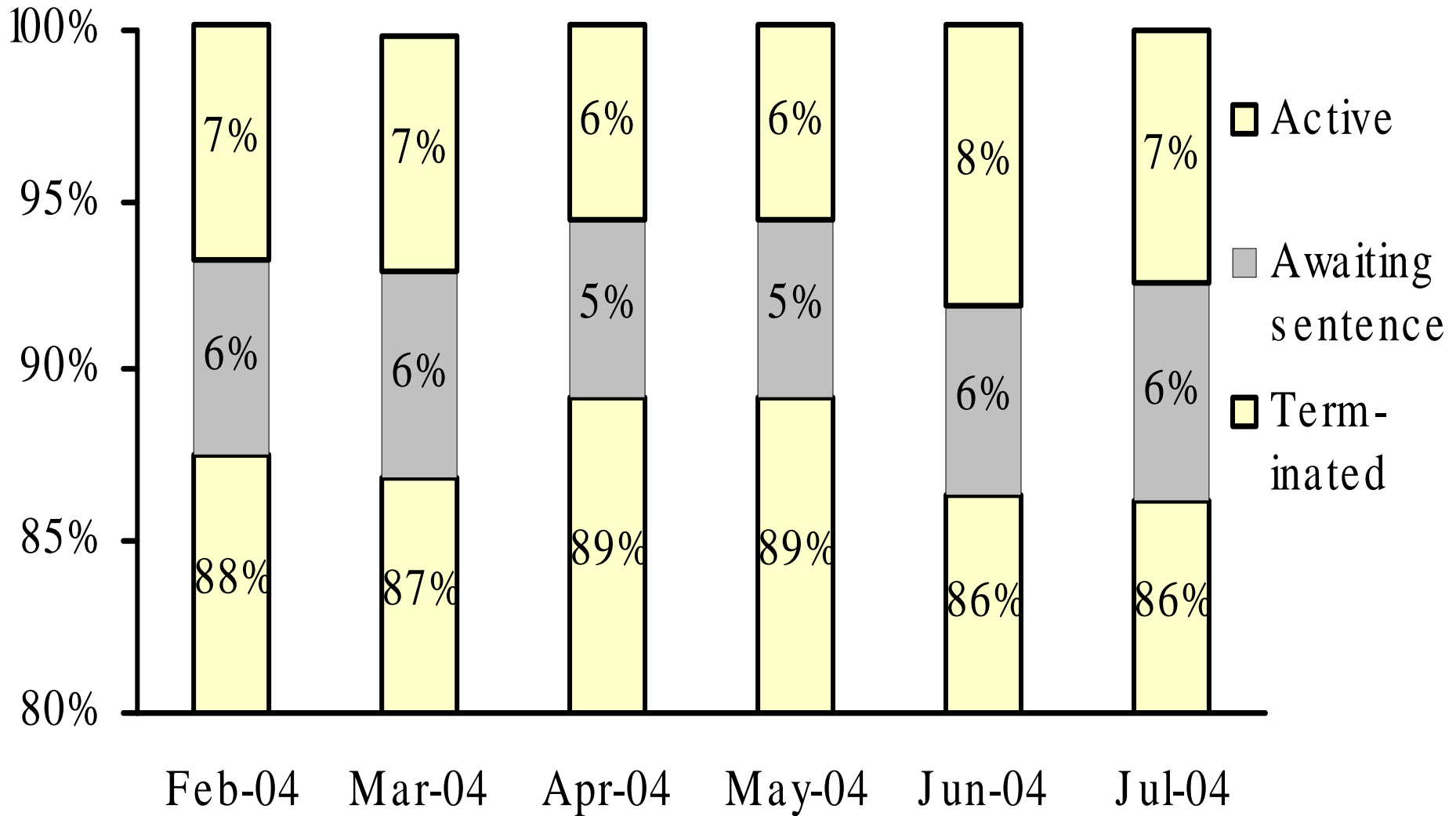
Disposition of Cases Terminated

Average monthly dispositions by quarter

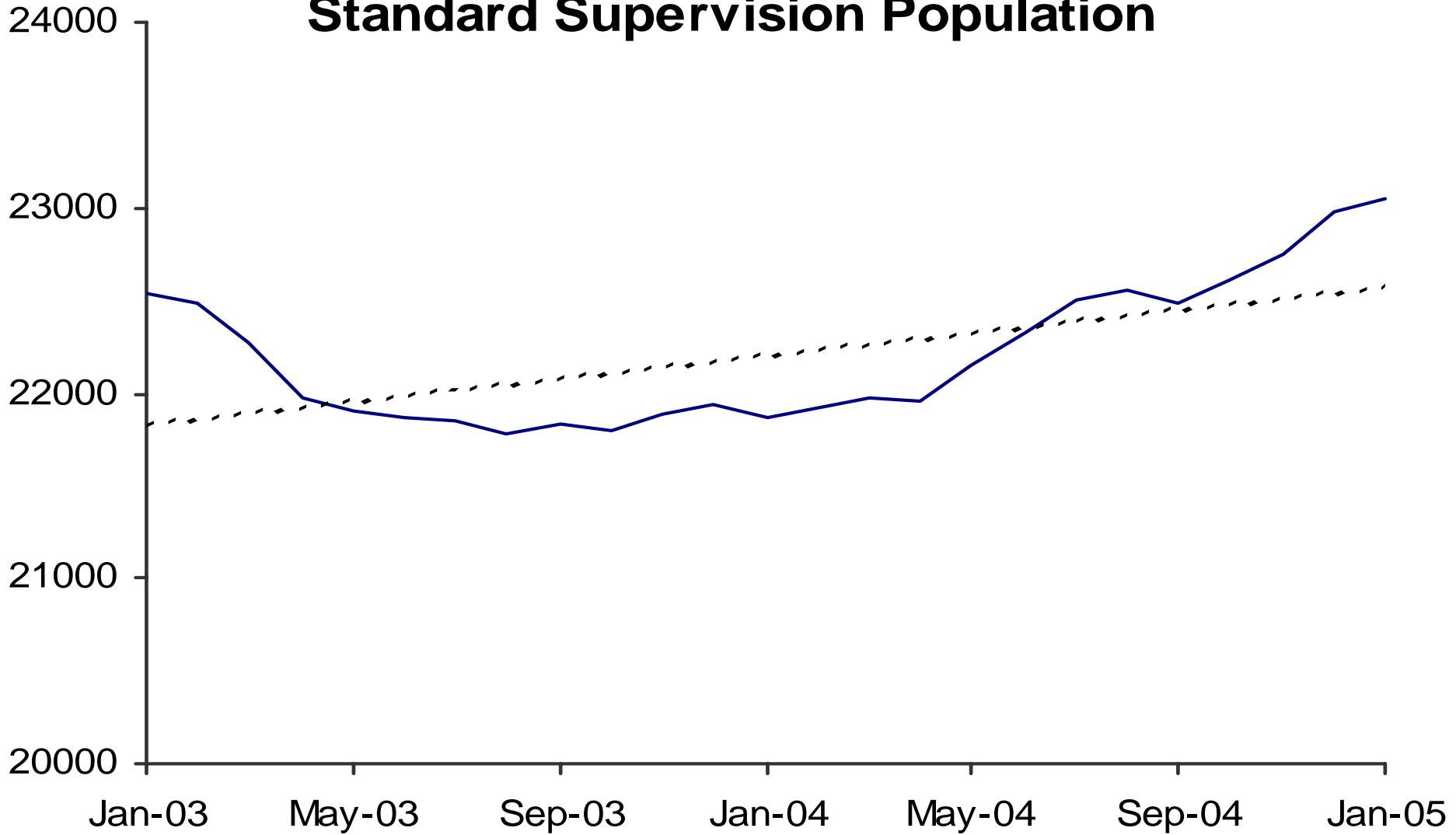
- Apr-Jun 2004
- Jul-Sep 2004
- Oct-Dec 2004
- Jan-05



Status of Cases After 180 Days

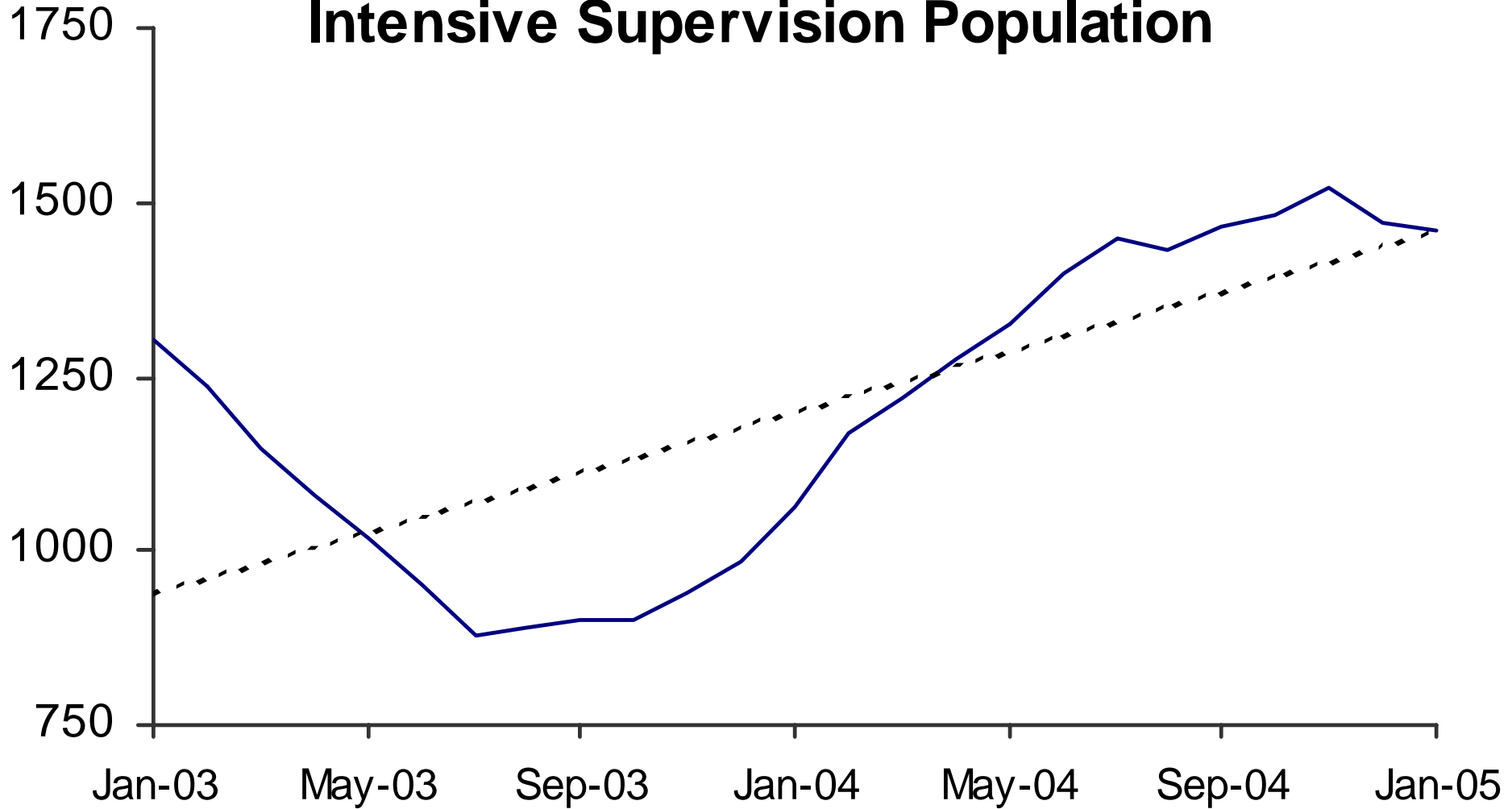


Adult Probation Standard Supervision Population

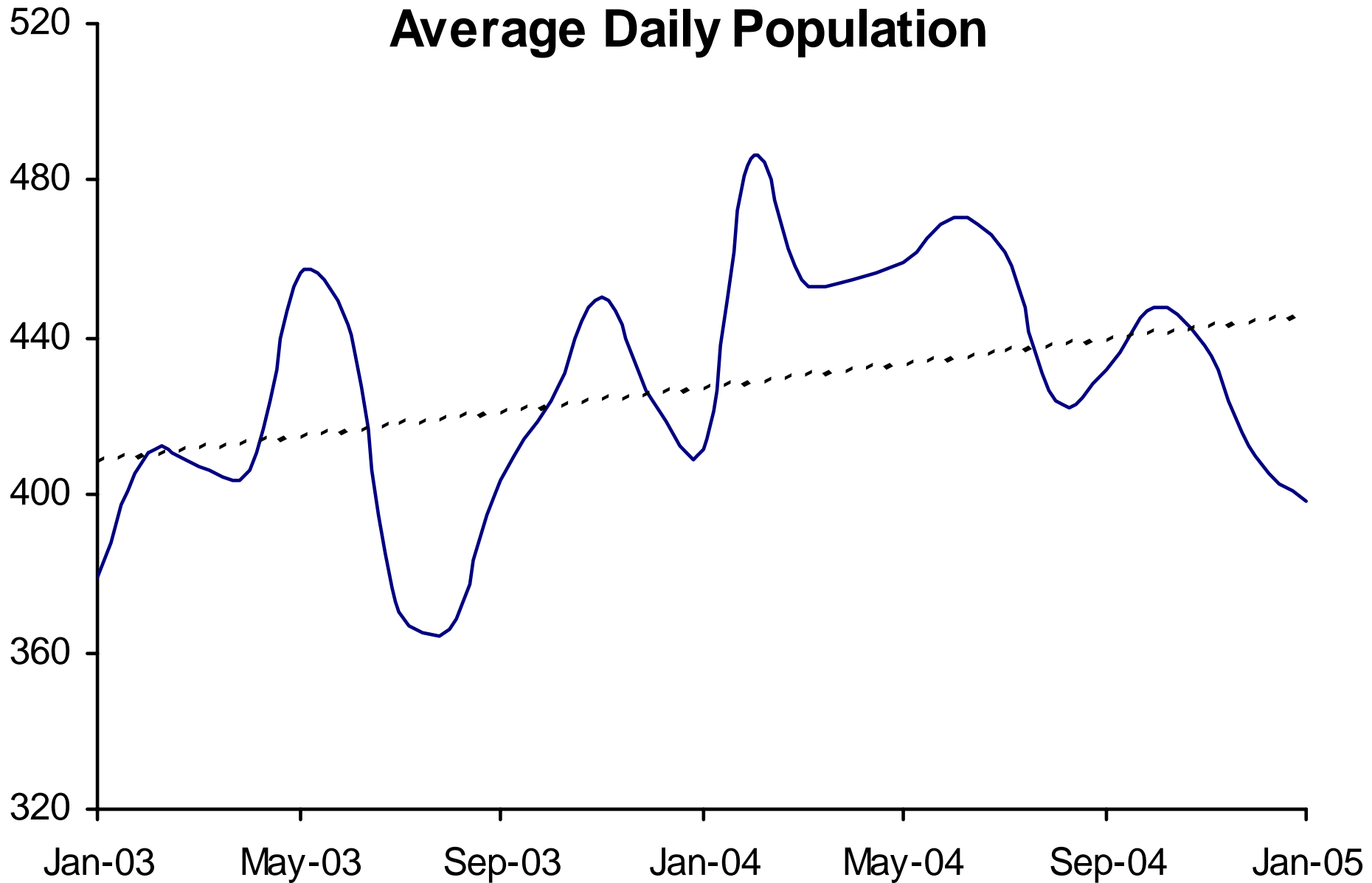


Interstate Compact and Report and Review caseloads are not included.

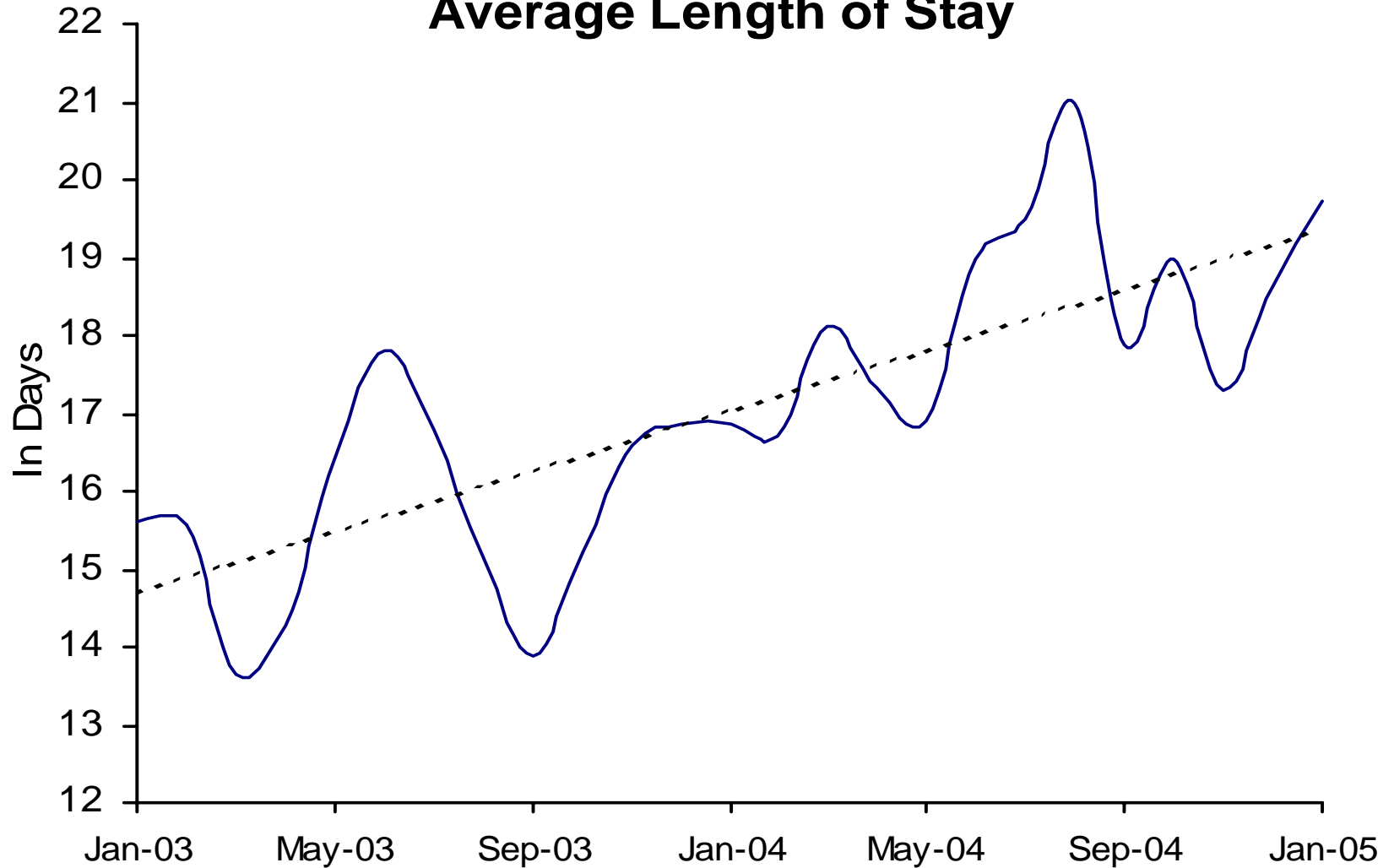
Adult Probation Intensive Supervision Population



Juvenile Detention Average Daily Population

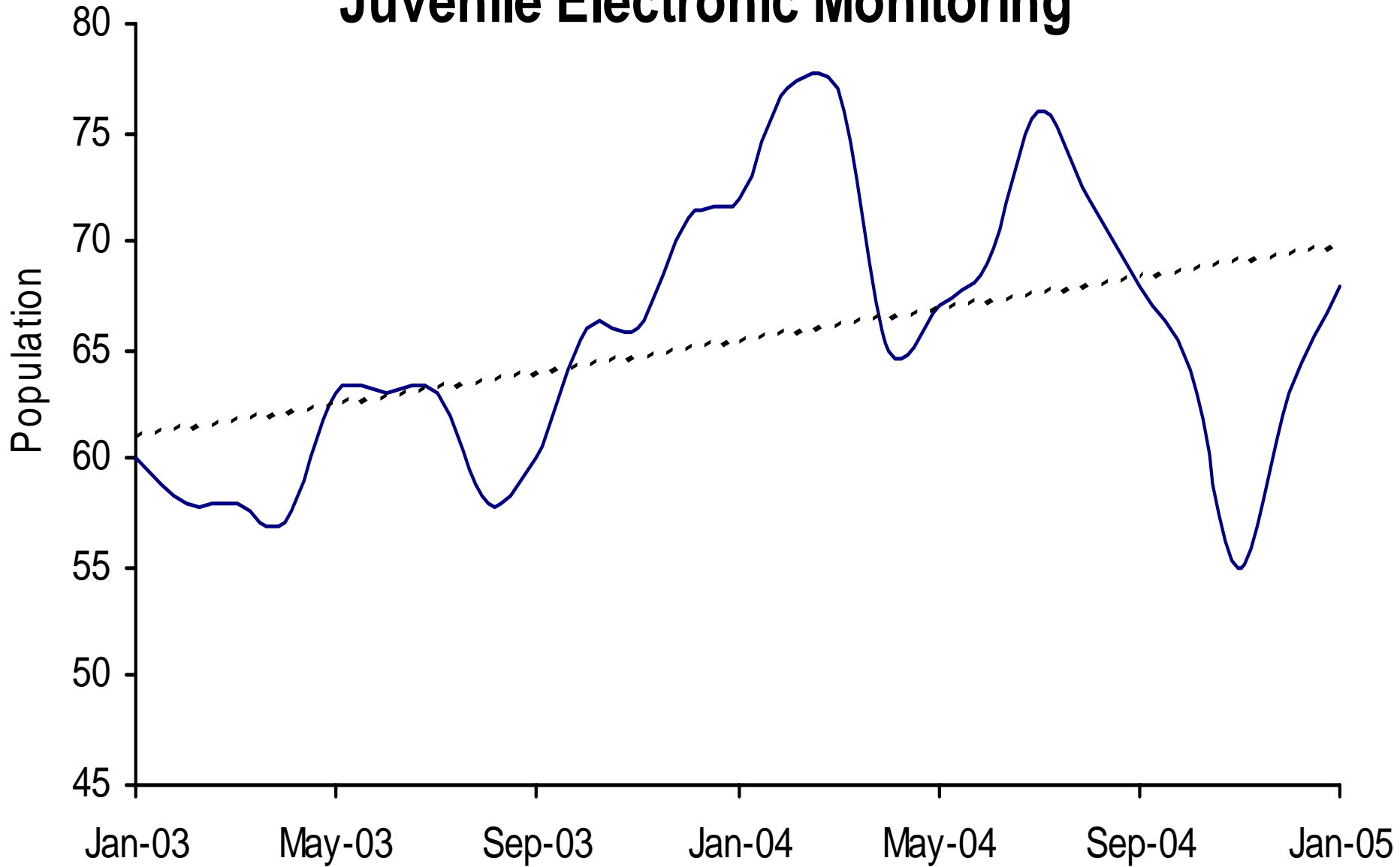


Juvenile Detention Average Length of Stay



The average length of stay for January - May 2003 was recalculated based upon an improved methodology.

Juvenile Electronic Monitoring



Juvenile Home Detention

