



Maricopa County
Criminal Justice System

Monthly Performance Report for January 2006

Monthly Averages						
	FY 2002	FY 2003	FY 2004	FY 2005	FY 2006	Jan. 2006
Sheriff's Office						
Bookings	9,641	9,875	10,176	9,975	10,368	10,908
Average Daily Population	7,557	8,044	8,657	9,054	9,869	9,665
Avg Length of Stay (in days)	23.8	24.4	26.0	27.7	29.3	27.5
Superior Court						
Filings	2,515	2,904	3,062	2,996	3,143	3,040
Terminations	2,367	2,330	2,612	2,758	2,853	3,065
Clearance Rate	94%	80%	85%	93.0%	91.1%	100.8%
Active Pending Inventory	7,419	8,123	9,106	10,002	10,996	11,029
Trials Completed	61	59	42	51	63	83
Trial Rate	2.4%	2%	1.4%	1.7%	2.0%	2.7%
Adult Probation						
Pretrial General Supervision	609	700	990	978	793	781
Pretrial Intensive Supervision	356	331	657	816	1,044	1,208
Pretrial Electronic Monitoring	78	97	153	164	180	185
Standard Probation Supervision	24,448	25,400	23,957	26,091	27,305	27,846
Intensive Probation Supervision	1,564	1,267	1,079	1,456	1,343	1,302
Juvenile Detention and Probation						
Avg Daily Detention Pop	407	401	431	443	419	406
Avg Length of Stay (in days)	14.7	15.1	16.6	18.7	18.0	19.5
Standard Prob.	4,726	4,387	4,232	4,108	4,036	4,003
Intensive Prob.	666	659	518	547	539	524

Criminal Justice System News

Adult Incarceration: *Bookings and ADP increased from December 2005 to January 2006. Bookings rose from 9,483 to 10,908, while ADP increased from 9,537 to 9,665. The average length of stay decreased substantially, from 31.2 days to 27.4 days. This is the lowest ALOS since April 2005, when it was 27.0 days. ALOS typically falls from December to January.*

The ALOS for all populations decreased. The ALOS for agency holds went from 78.8 days to 72.7 days; sentenced went from 35.8 days to 31.6; overall pretrial went from 9.4 days to 7.0 days. Breaking down the pretrial population, felony holds decreased from 15.1 days to 11.0 days, while misdemeanor holds decreased from 3.5 days to 2.9 days.

Filings & Case Processing: *Criminal filings decreased slightly from 3,108 in December to 3,040 in January. With terminations increasing from 2,494 to 3,065, though, the termination rate was over 100% for the first time since October 2004. The active pending case inventory decreased from 11,132 to 11,029. Filings into the RCC decreased in January, from 1,974 to 1,871. Filings into the EDC increased from 787 to 812.*

Adult Probation:

Levels of pretrial general and intensive supervision increased: general from 771 to 781 and intensive from 1,136 to 1,208. Levels of pretrial electronic monitoring decreased from 186 to 185.

Levels of standard probation supervision increased from December (27,713) to January (27,846). Levels of intensive probation supervision decreased from 1,313 to 1,302.

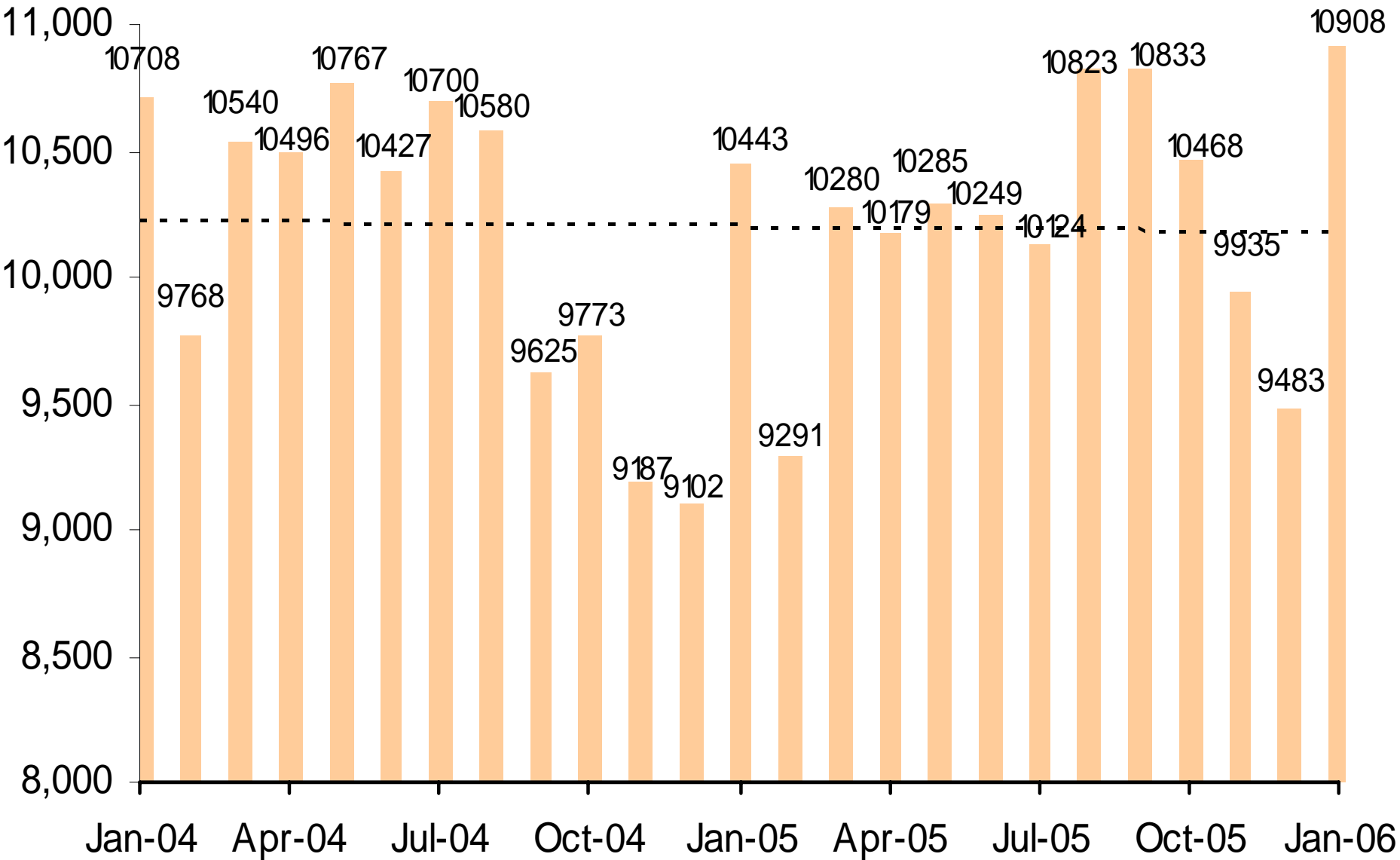
Juvenile Detention and Probation:

Average Daily Population decreased from 418 in December to 406 in January, the lowest ADP since September 2005. ALOS increased from 17.7 days to 19.5 days, the highest since July 2005. Electronic monitoring increased from 94 to 97. Home detention increased from 252 to 261, the highest since April 2005 (263).

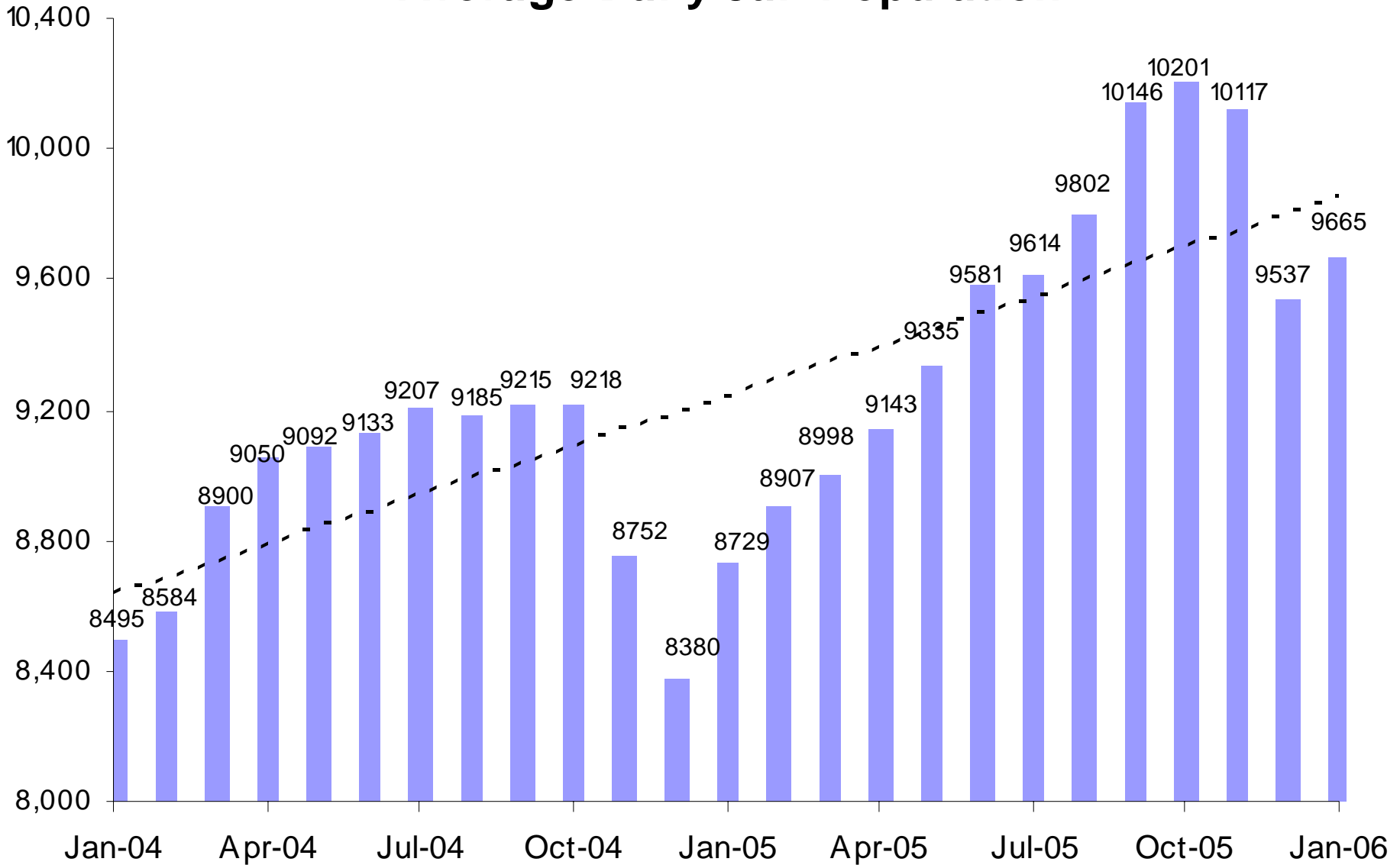
Levels of juvenile standard and intensive probation increased. Standard went from 3,955 to 4,003, while intensive went from 509 to 524.

A criminal justice system-wide goal is to enhance the utility and timeliness of management information on case processing, in an effort to help agencies effectively address current events. An interagency committee of McJustice meets regularly to accomplish this and develop this report. **Input from readers is welcomed.** Please contact Amy Rex at rexa@mail.maricopa.gov or 602-506-1310.

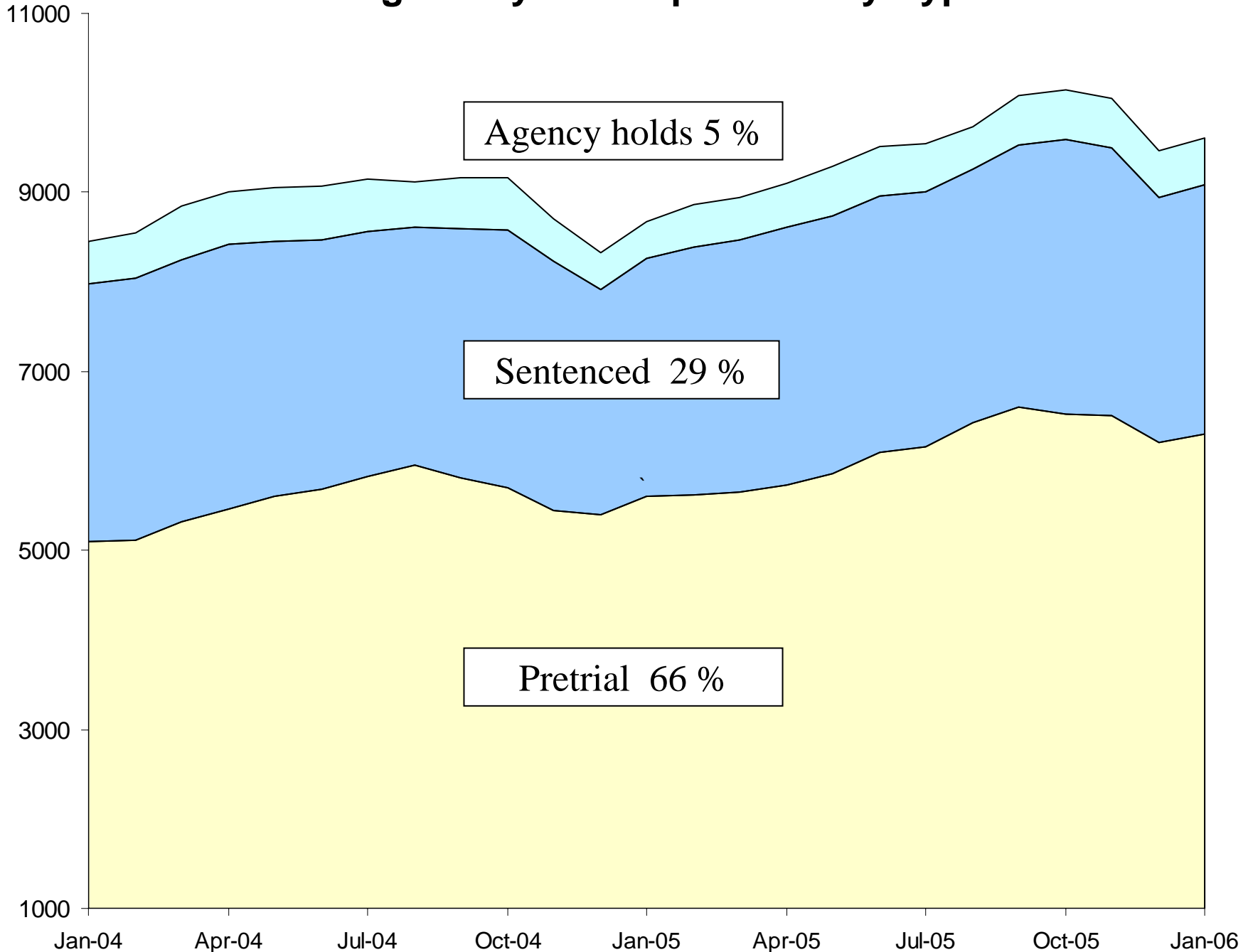
Jail Bookings



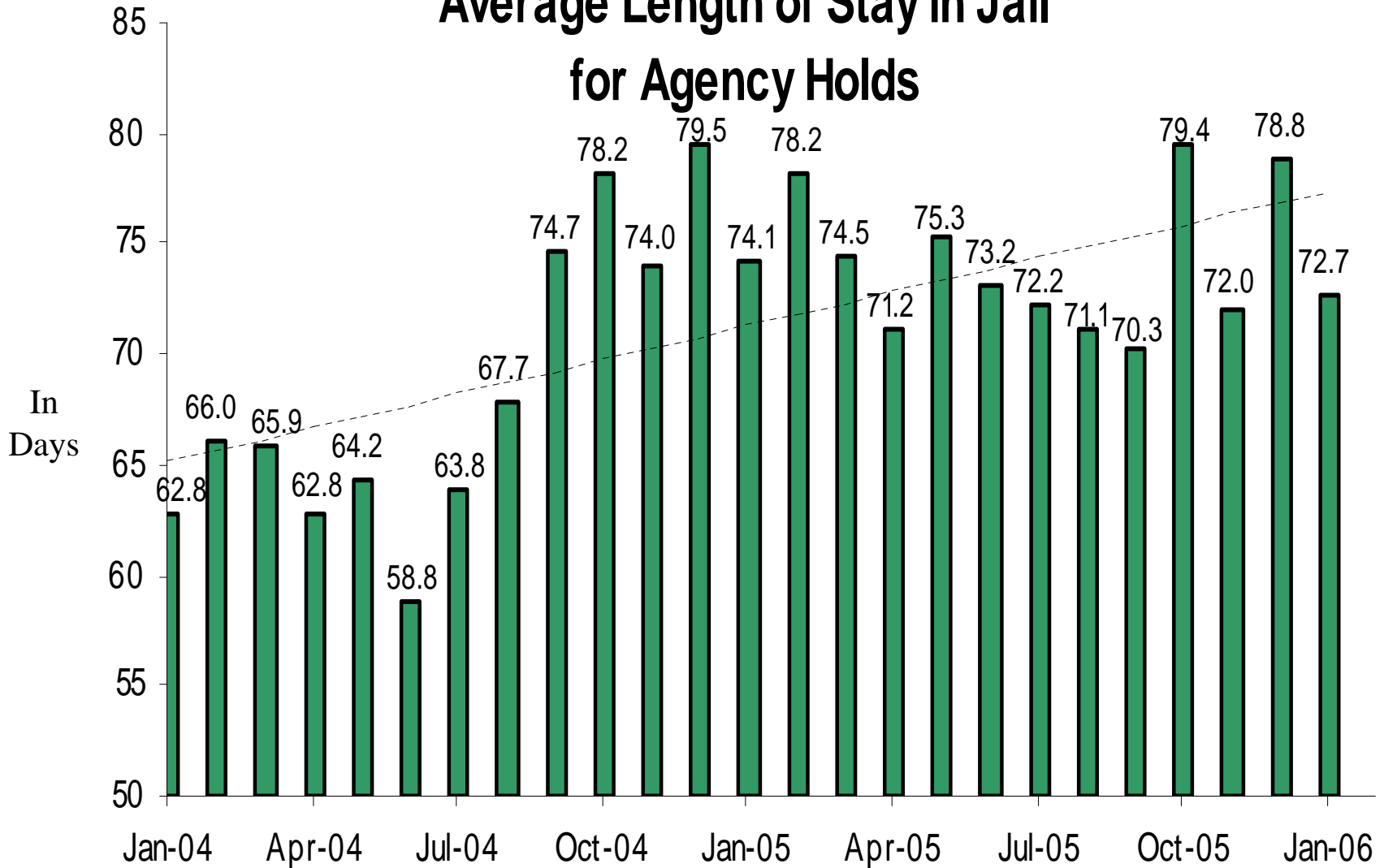
Average Daily Jail Population



Average Daily Jail Population by Type

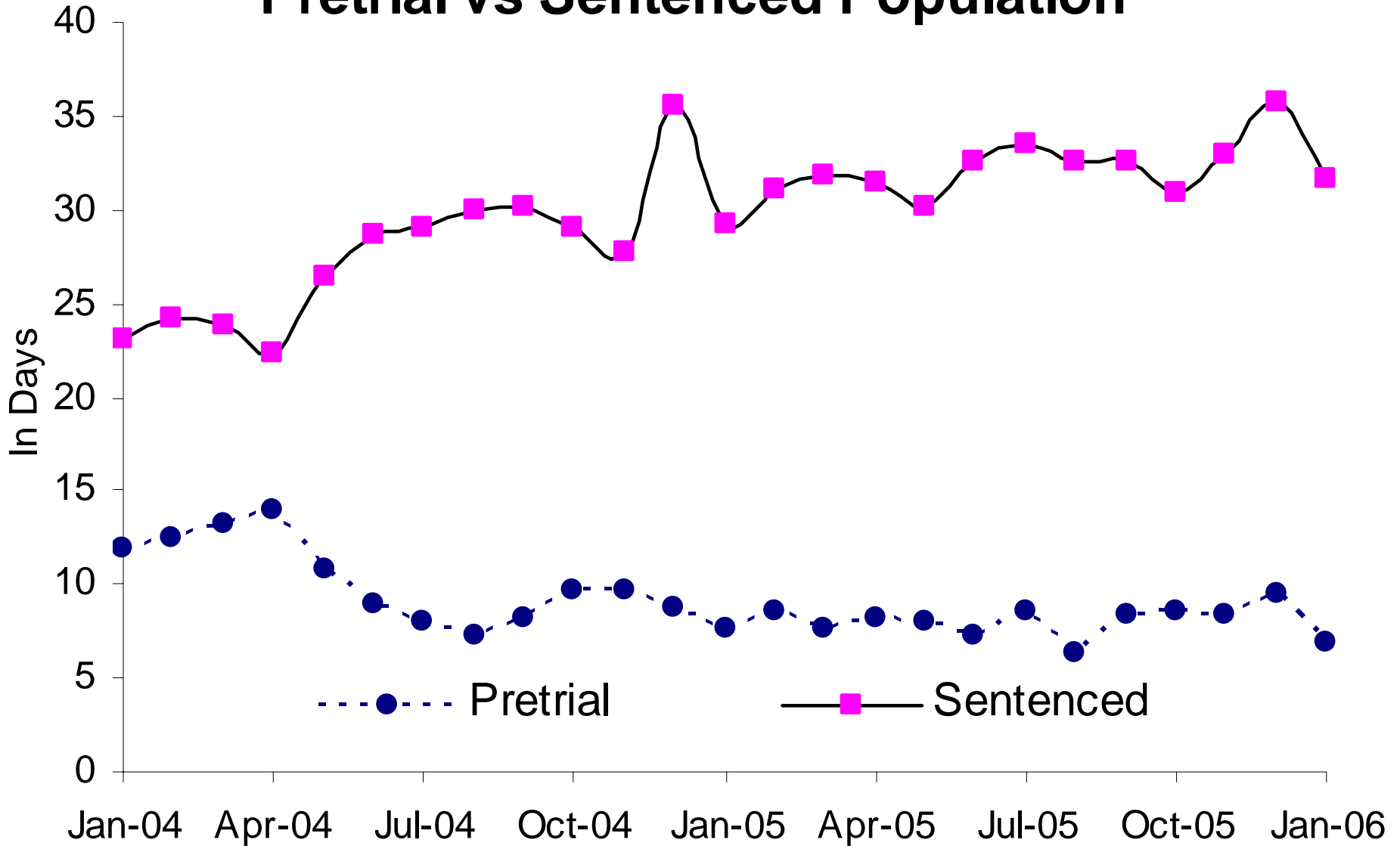


Average Length of Stay in Jail for Agency Holds

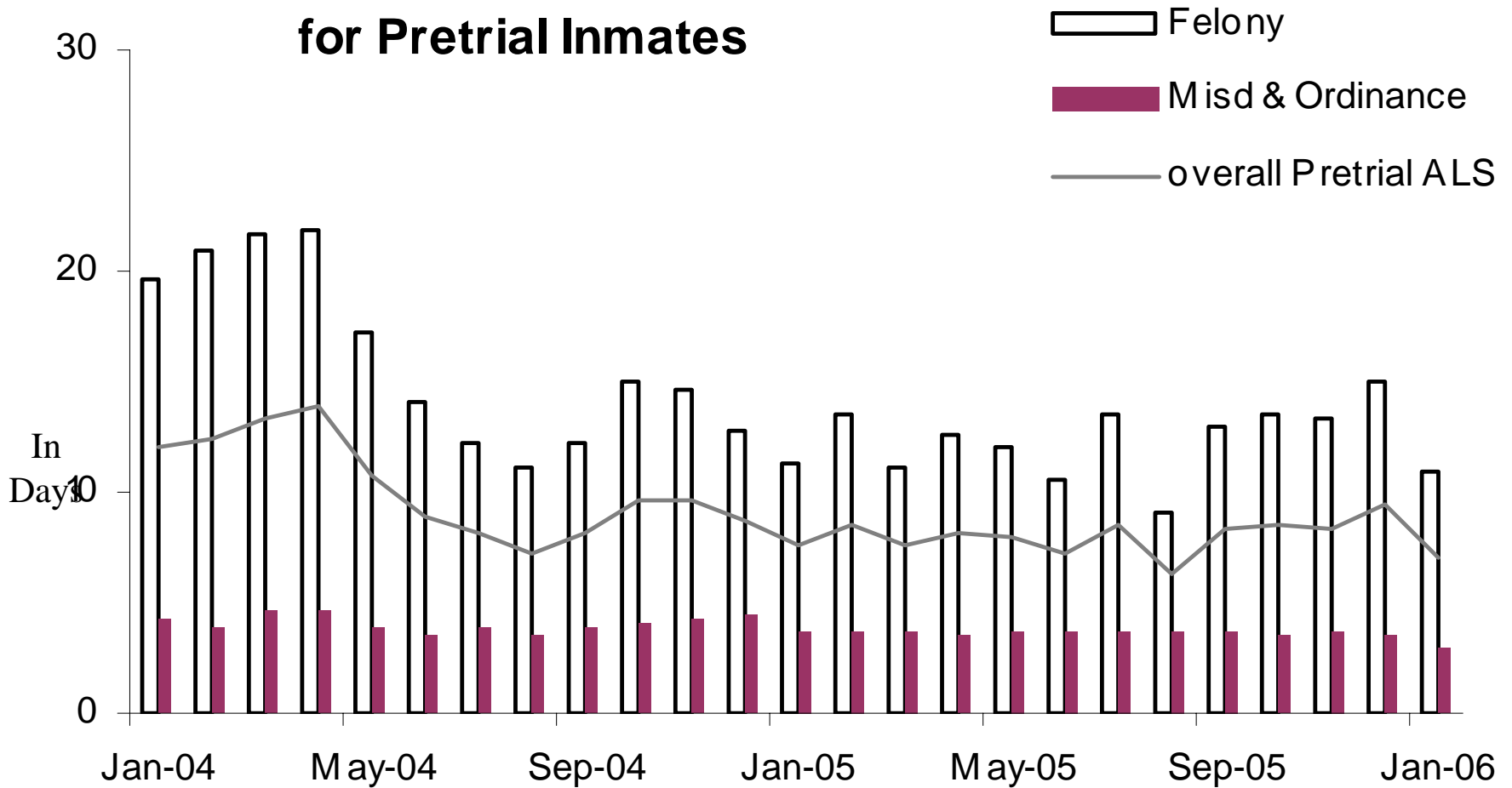


72% Dept of Corrections, 15% Federal agencies, 13% other

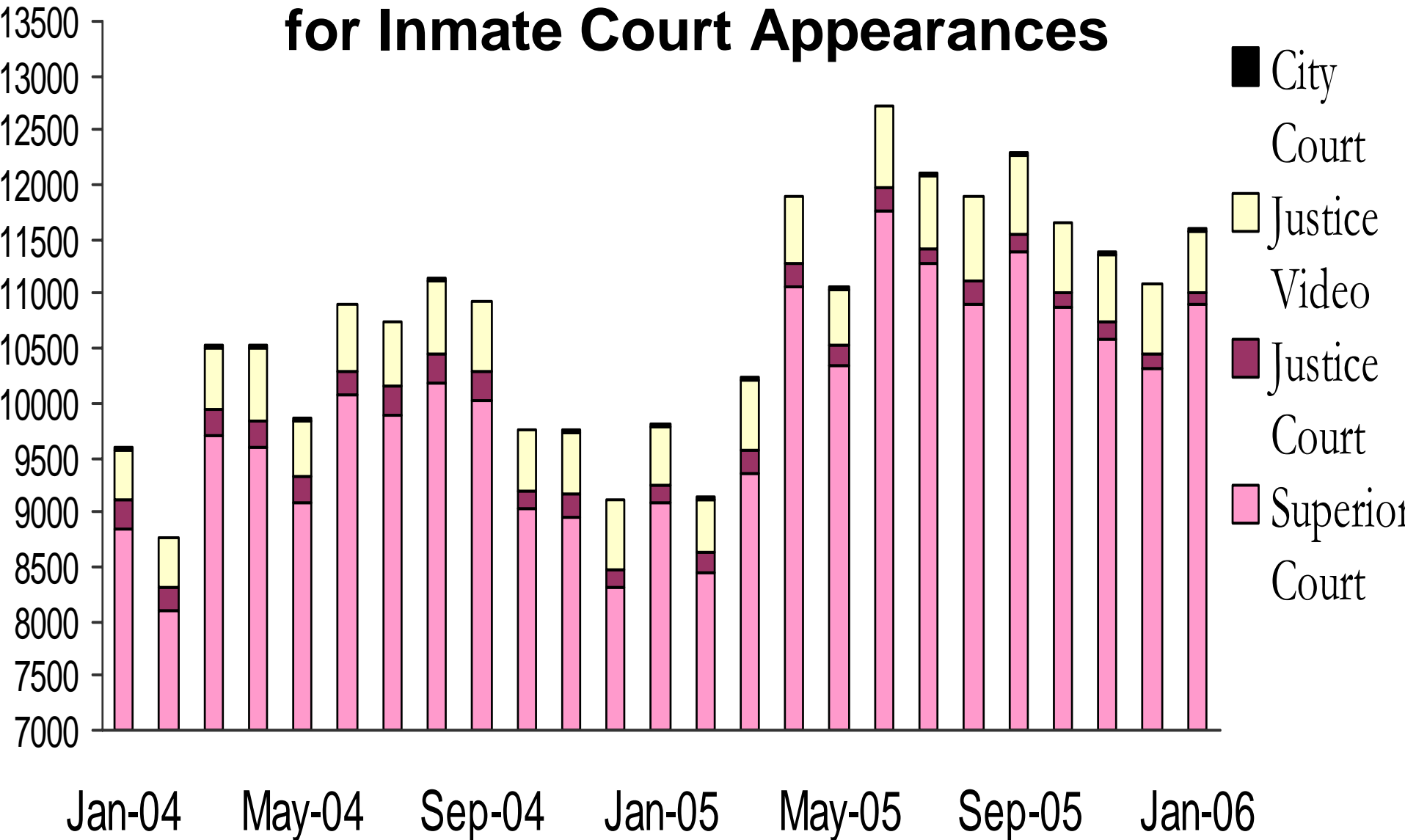
Average Length of Stay in Jail Pretrial vs Sentenced Population



Average Length of Stay in Jail for Pretrial Inmates



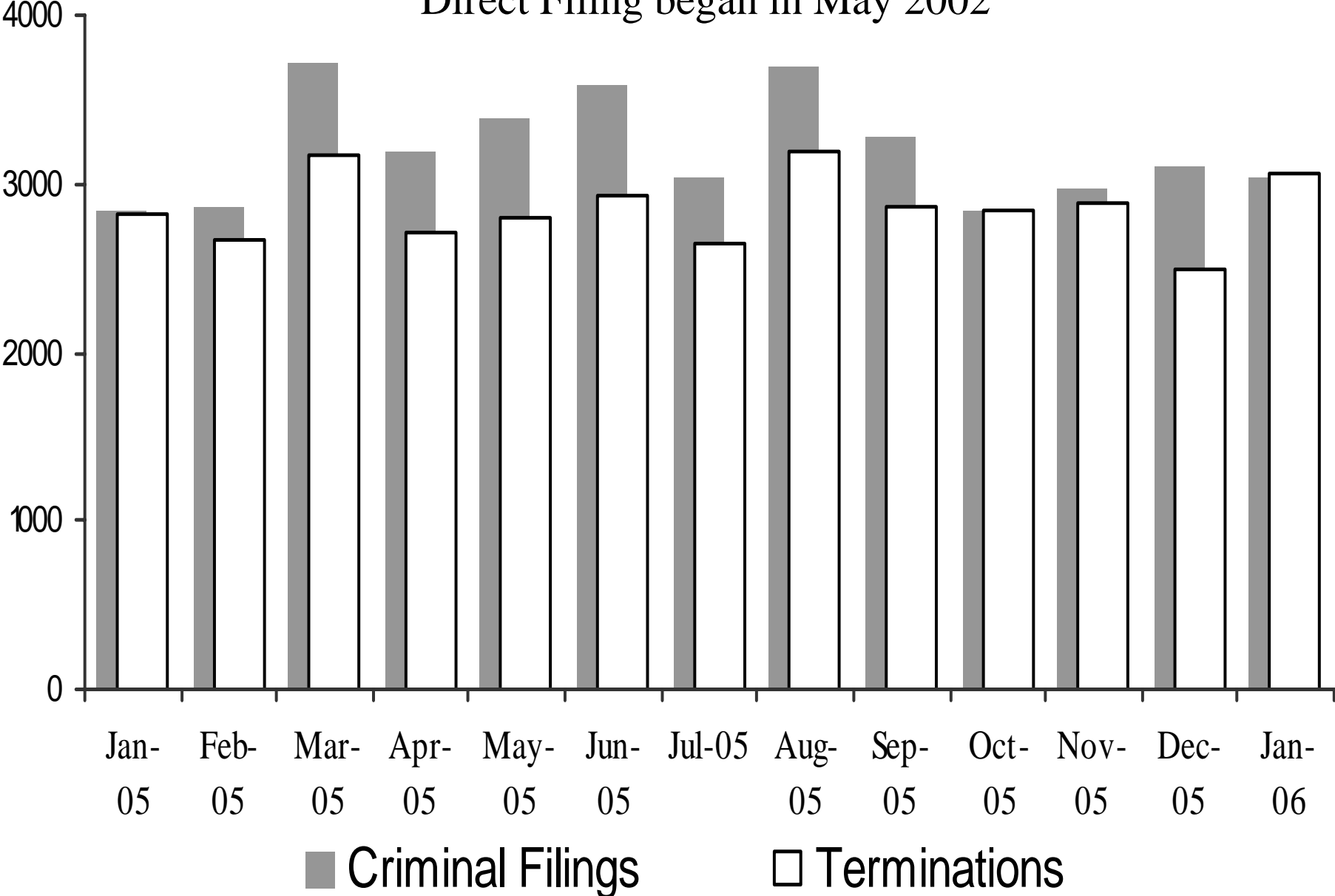
Sheriff's Office Transports for Inmate Court Appearances



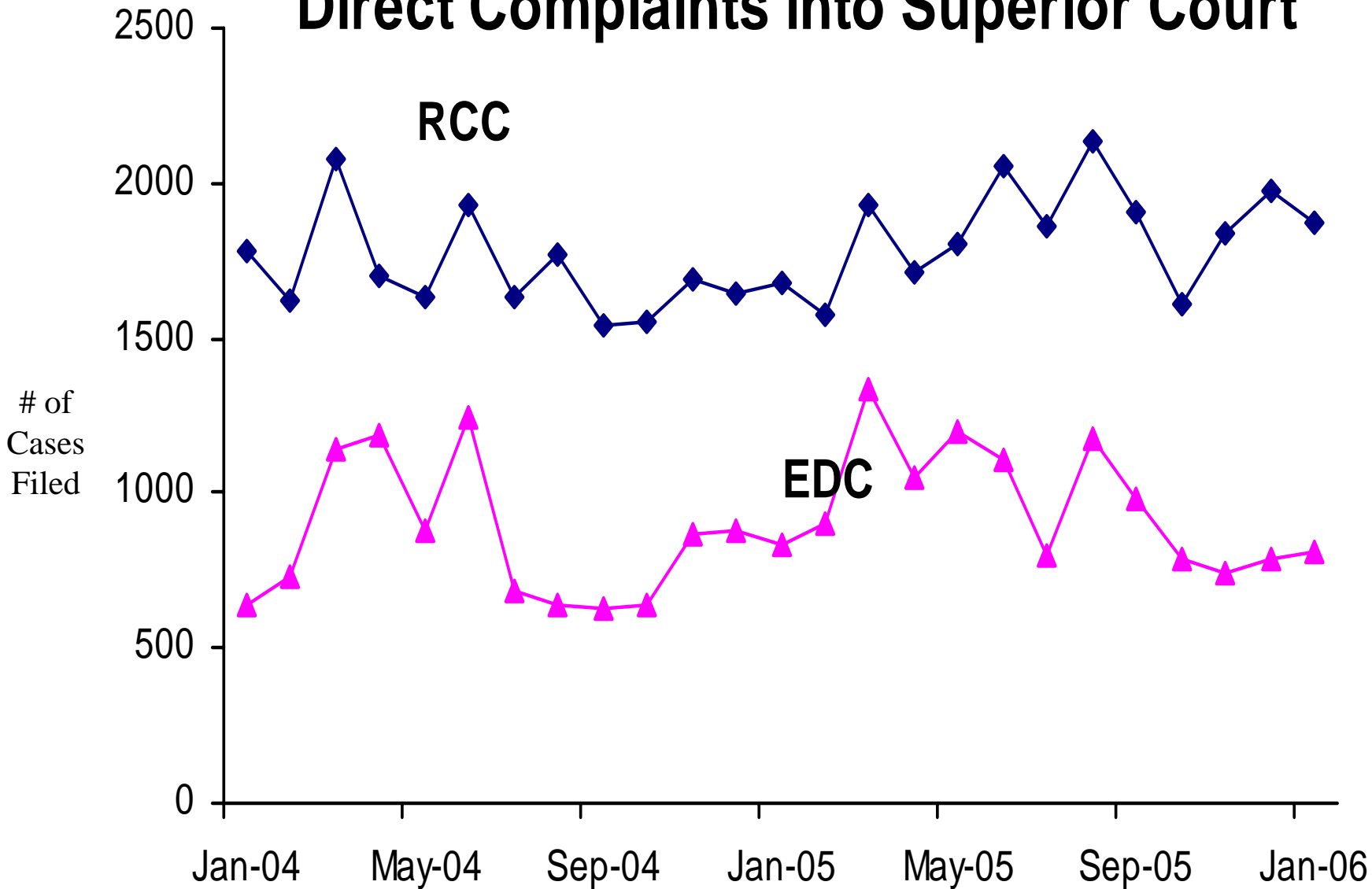
Since Direct Filing into Superior Court began May 2002, remaining transports to Justice Courts are for misdemeanor cases.

Superior Court Filings and Terminations

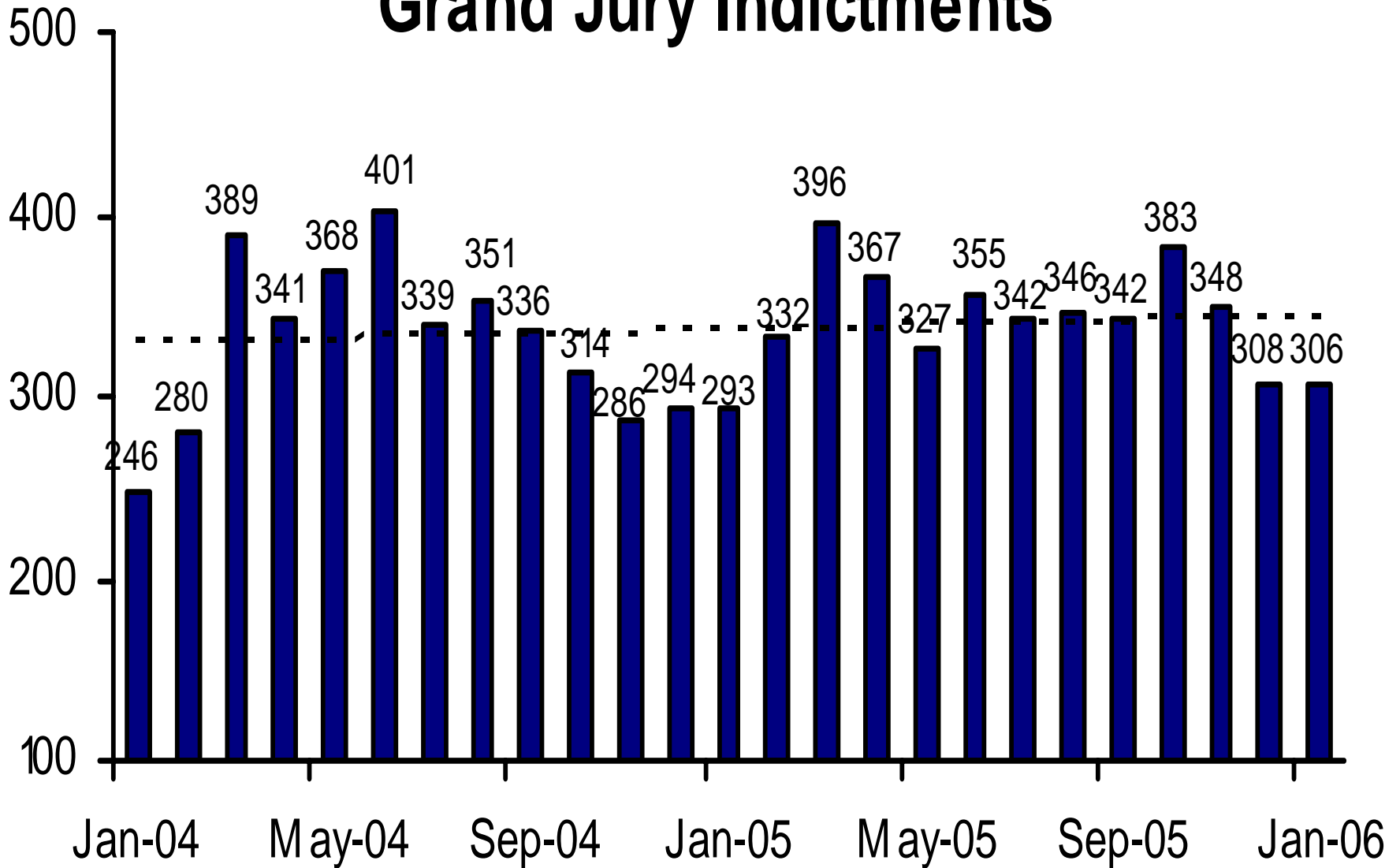
Direct Filing began in May 2002



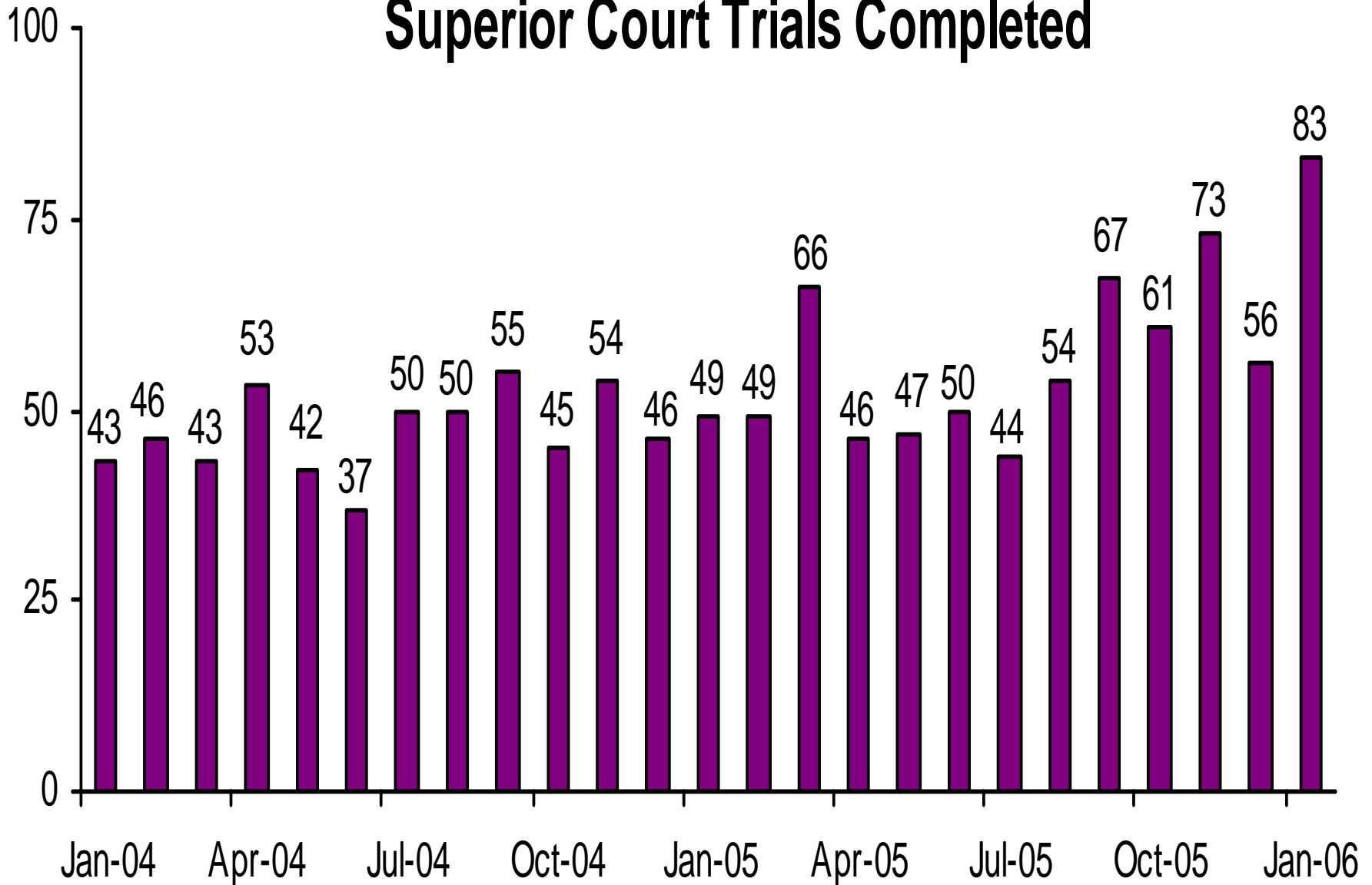
Direct Complaints into Superior Court



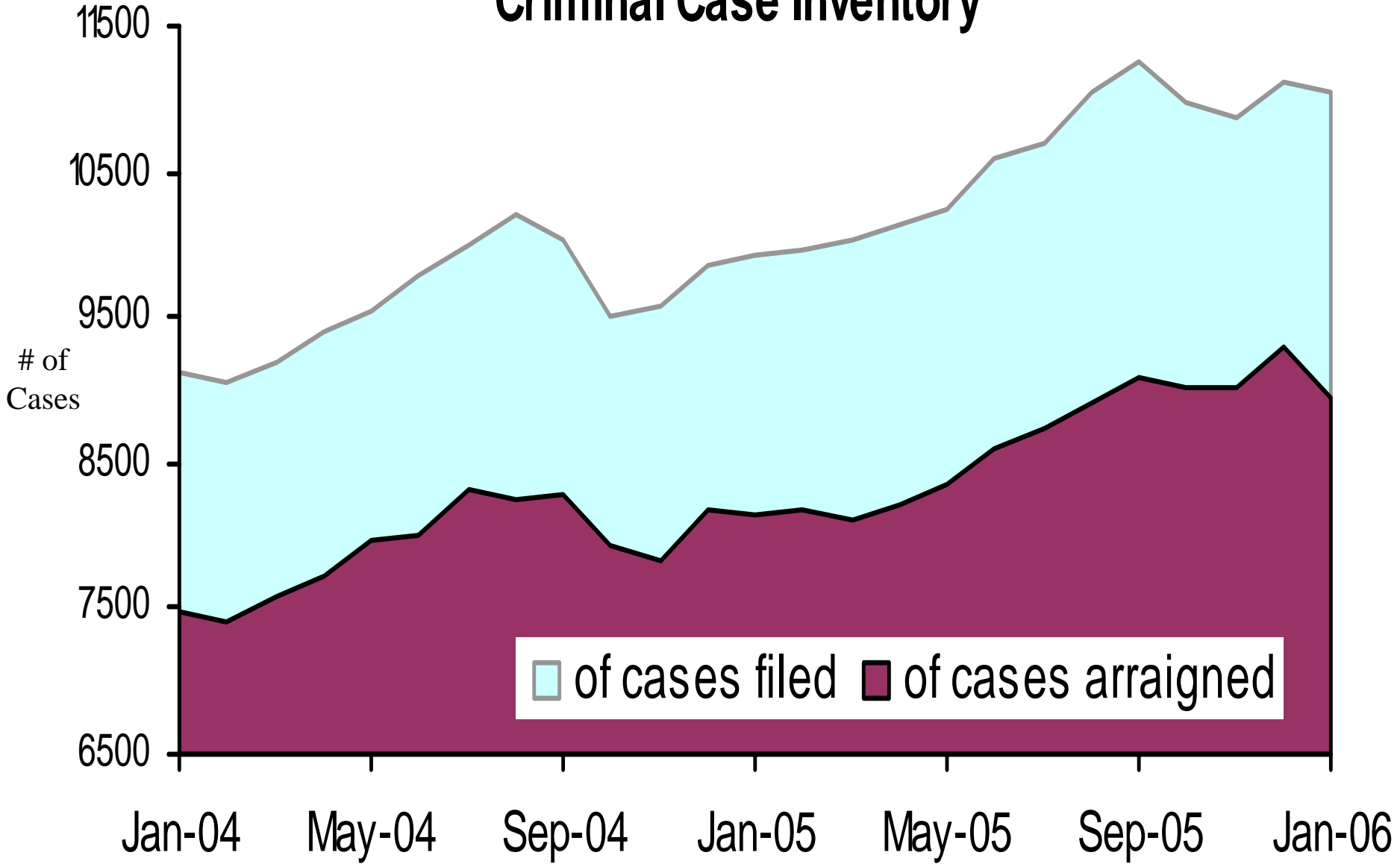
Grand Jury Indictments



Superior Court Trials Completed



Active Pending Criminal Case Inventory

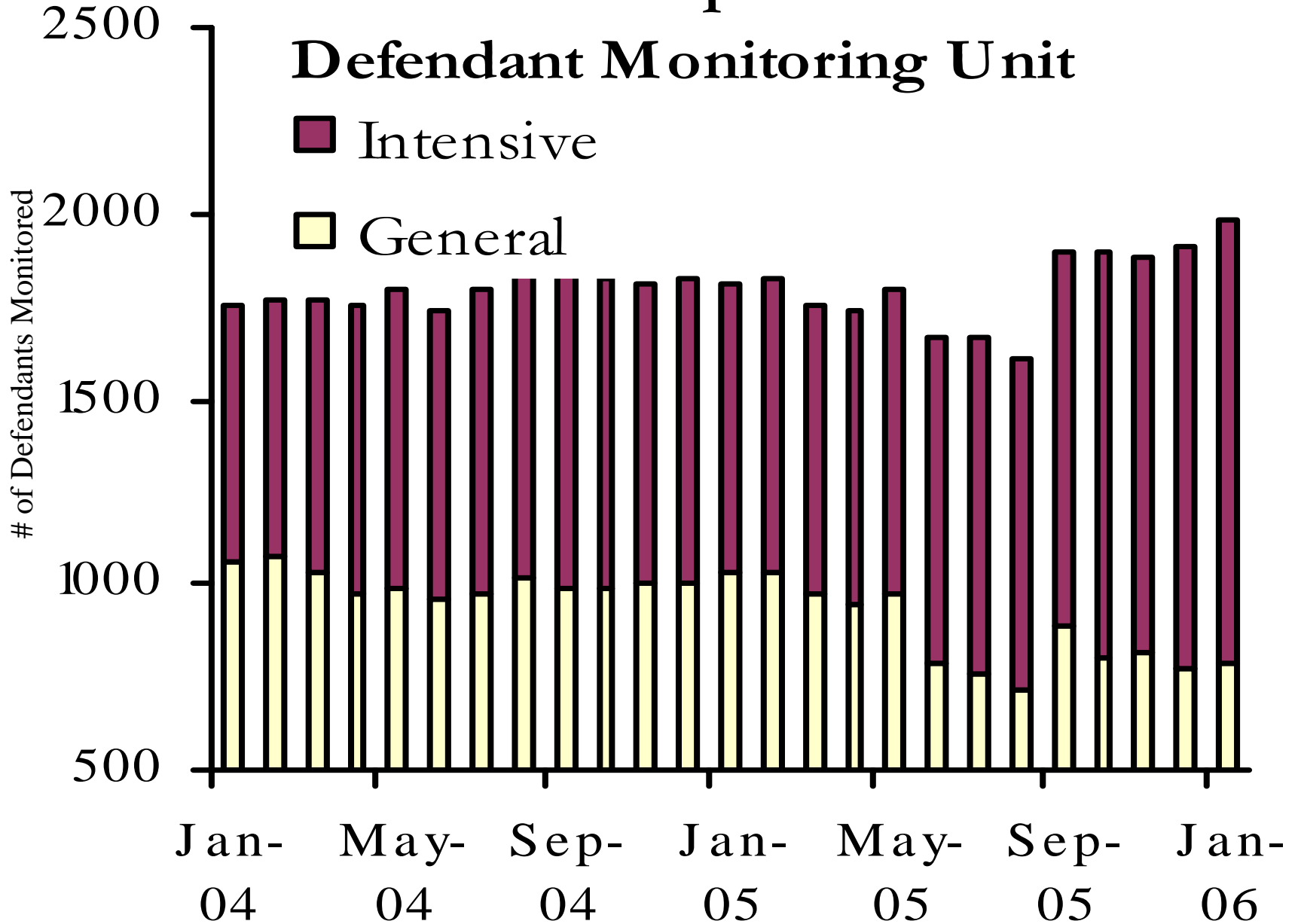


Pretrial Supervision

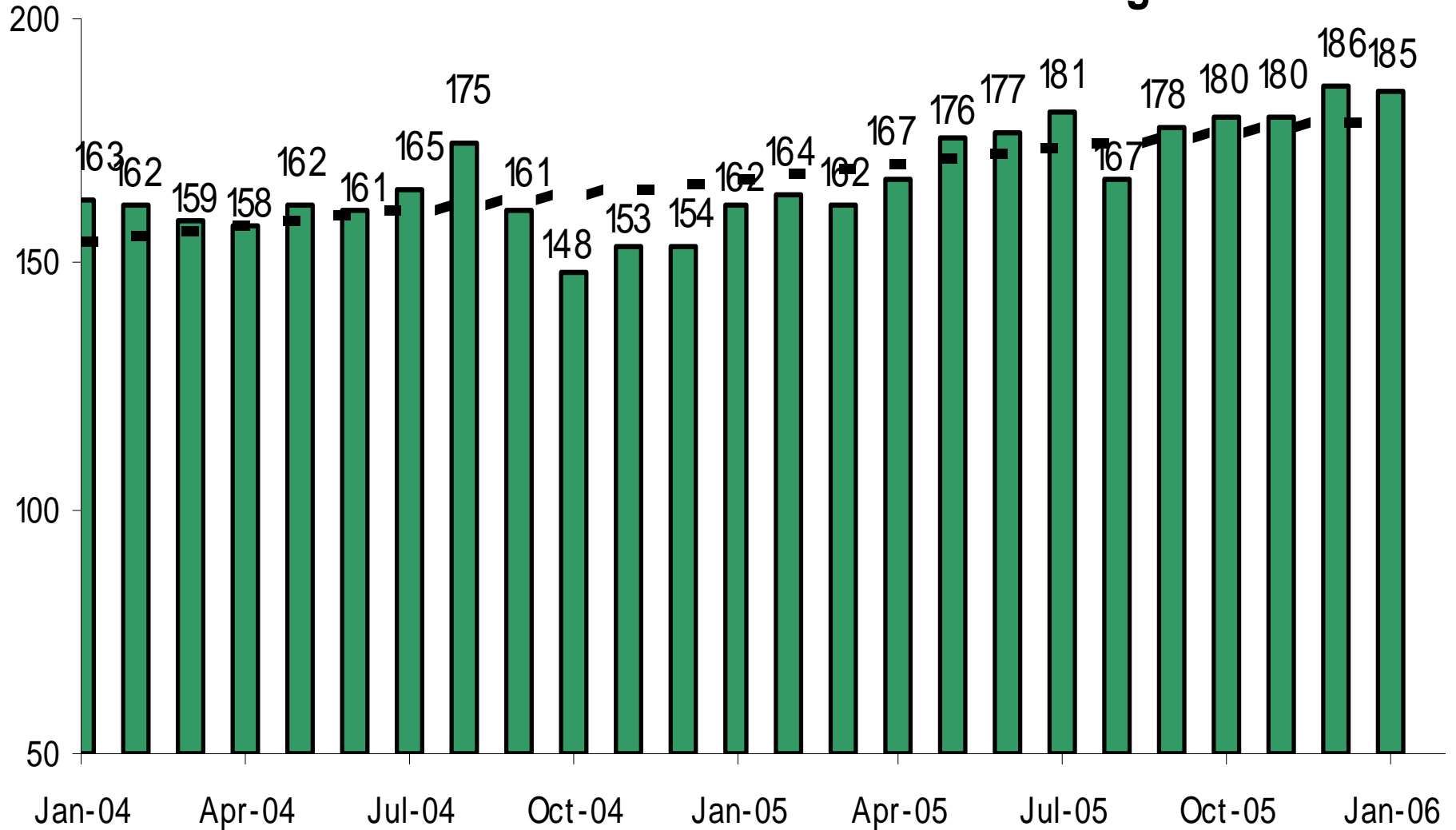
Defendant Monitoring Unit

Intensive

General



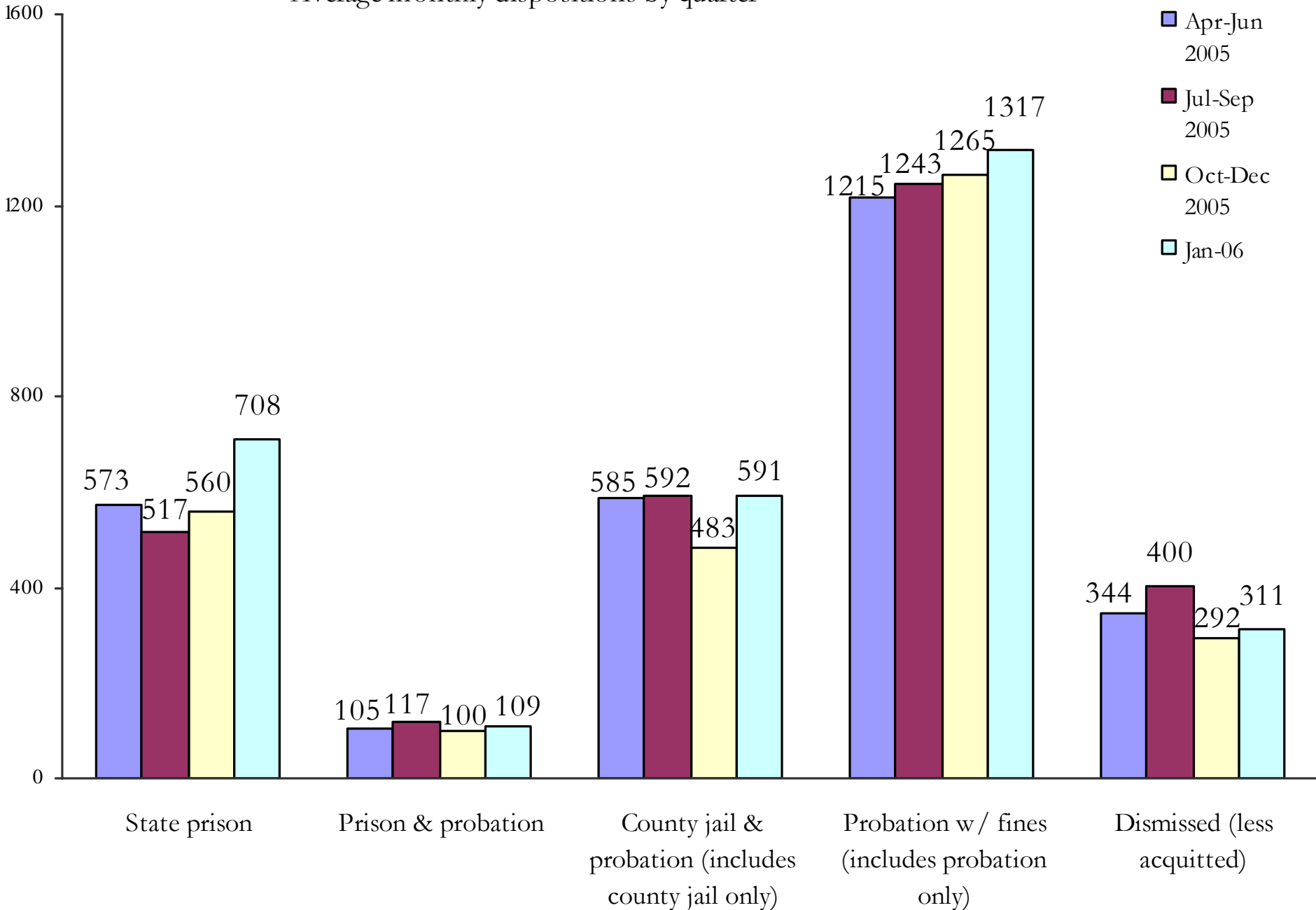
Pretrial Supervision Defendants on Electronic Monitoring



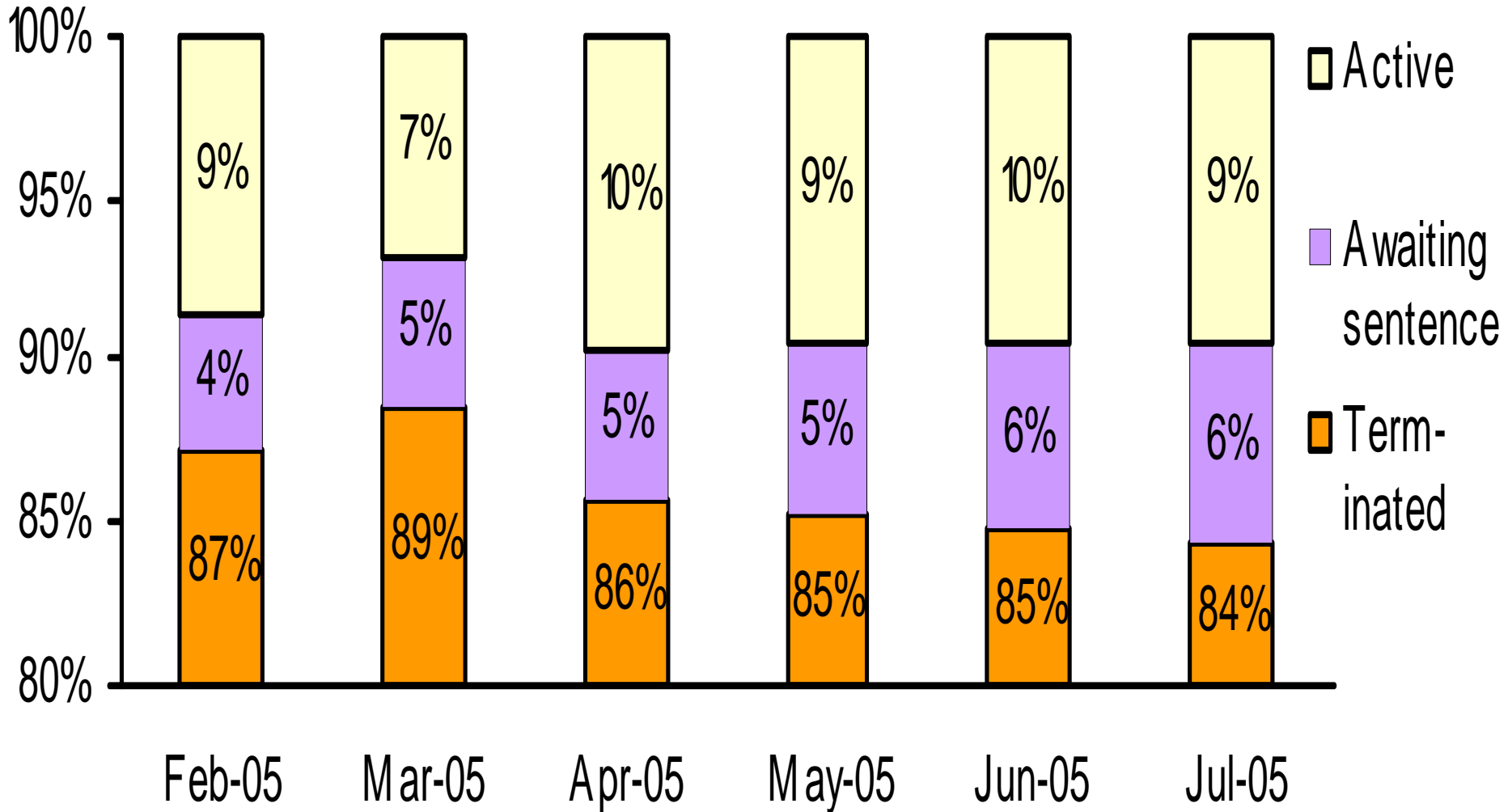
Disposition of Cases Terminated

Average monthly dispositions by quarter

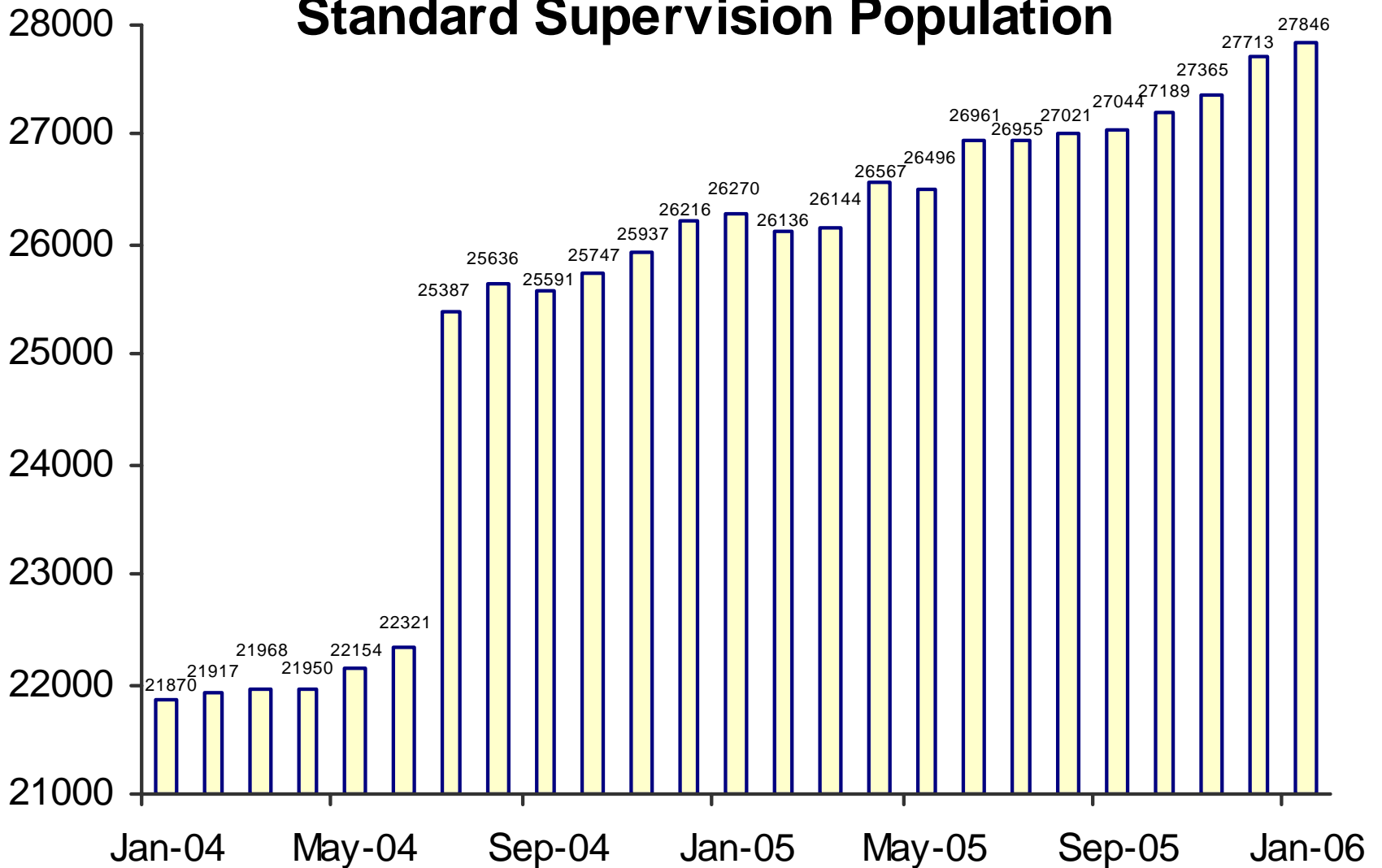
- Apr-Jun 2005
- Jul-Sep 2005
- Oct-Dec 2005
- Jan-06



Status of Cases After 180 Days

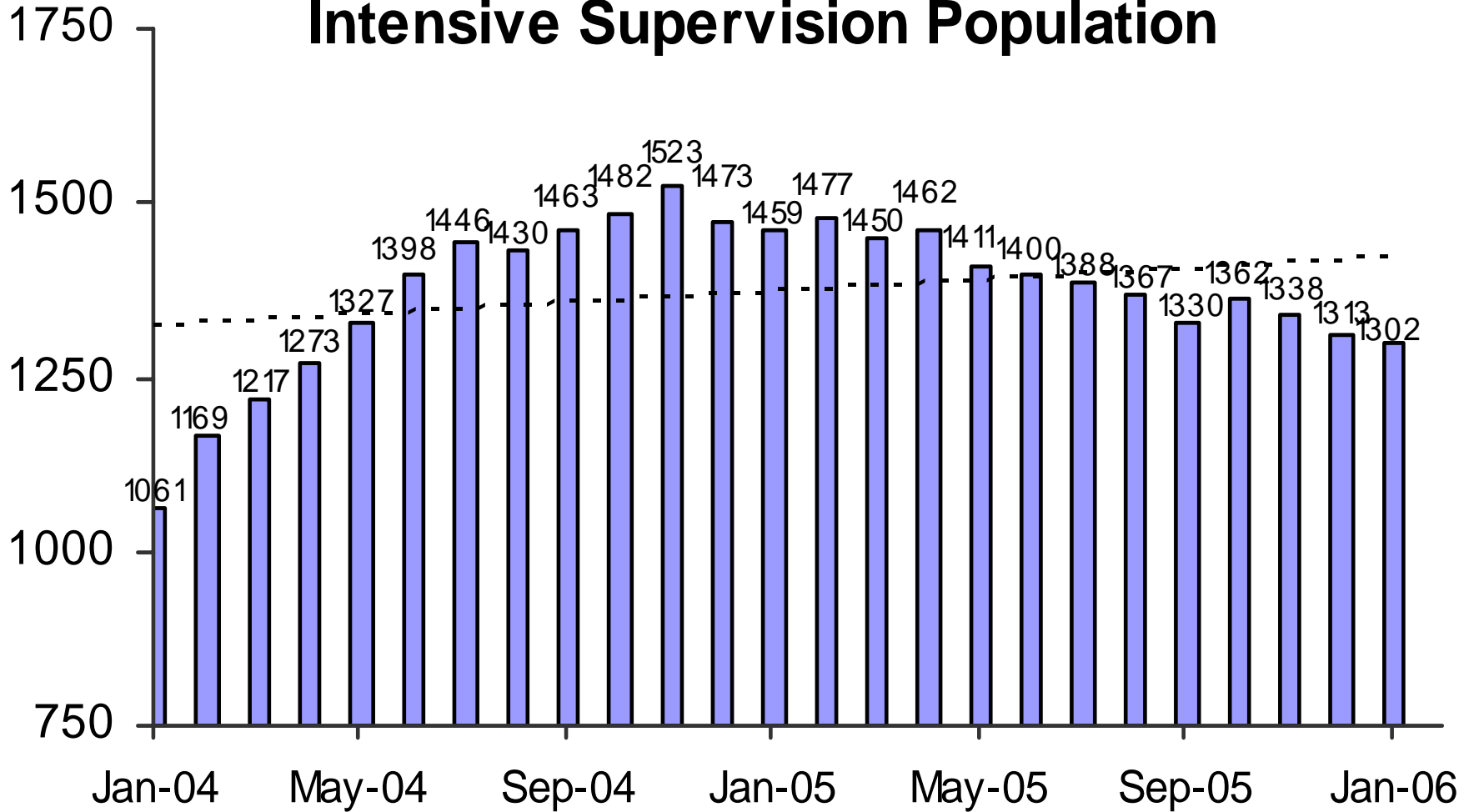


Adult Probation Standard Supervision Population

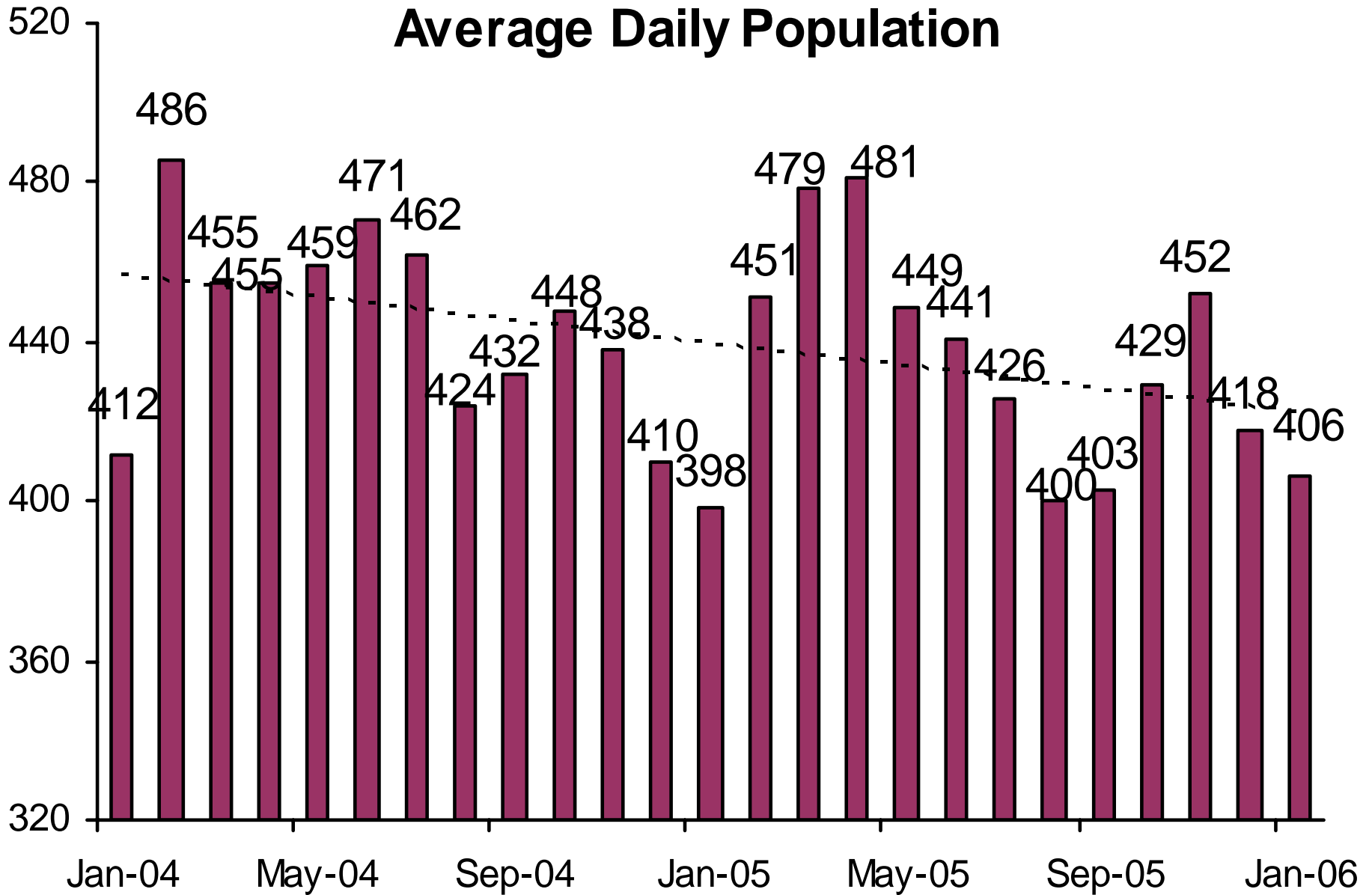


Interstate Compact and Report and Review caseloads are not included prior to July 2004. After July 2004, population as reported to the Board of Supervisors and JLBC is used.

Adult Probation Intensive Supervision Population

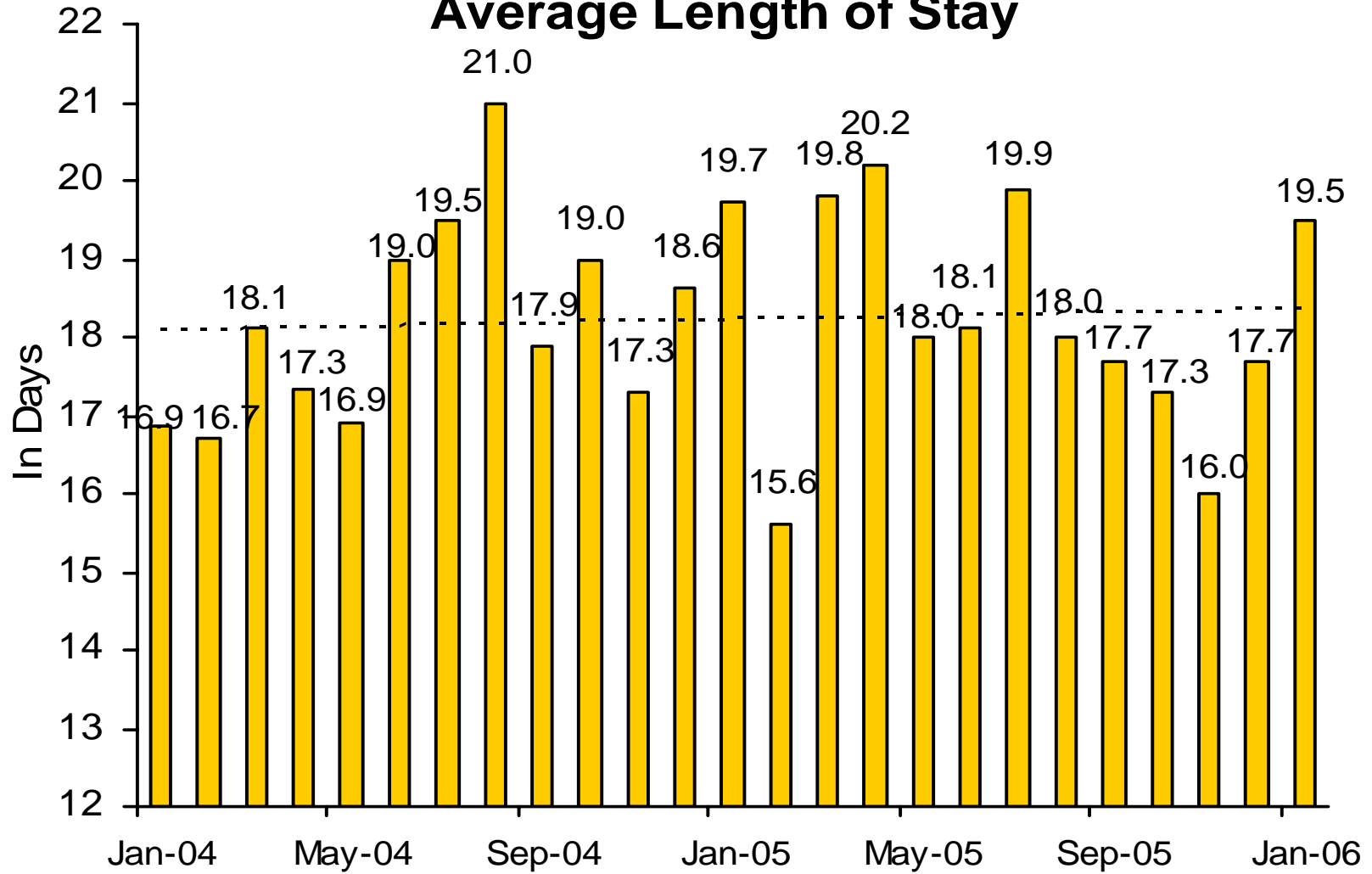


Juvenile Detention Average Daily Population

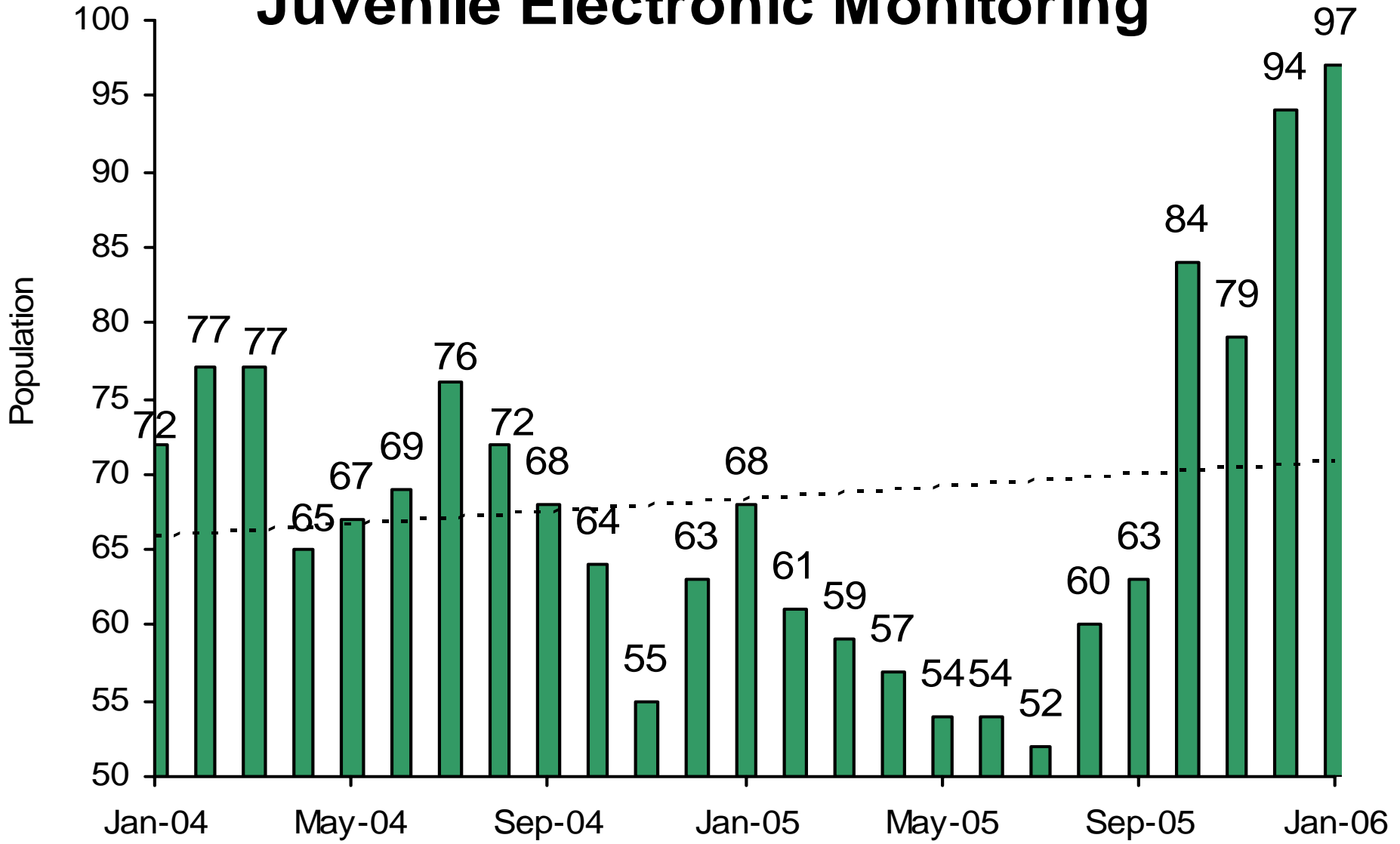


Juvenile Detention

Average Length of Stay

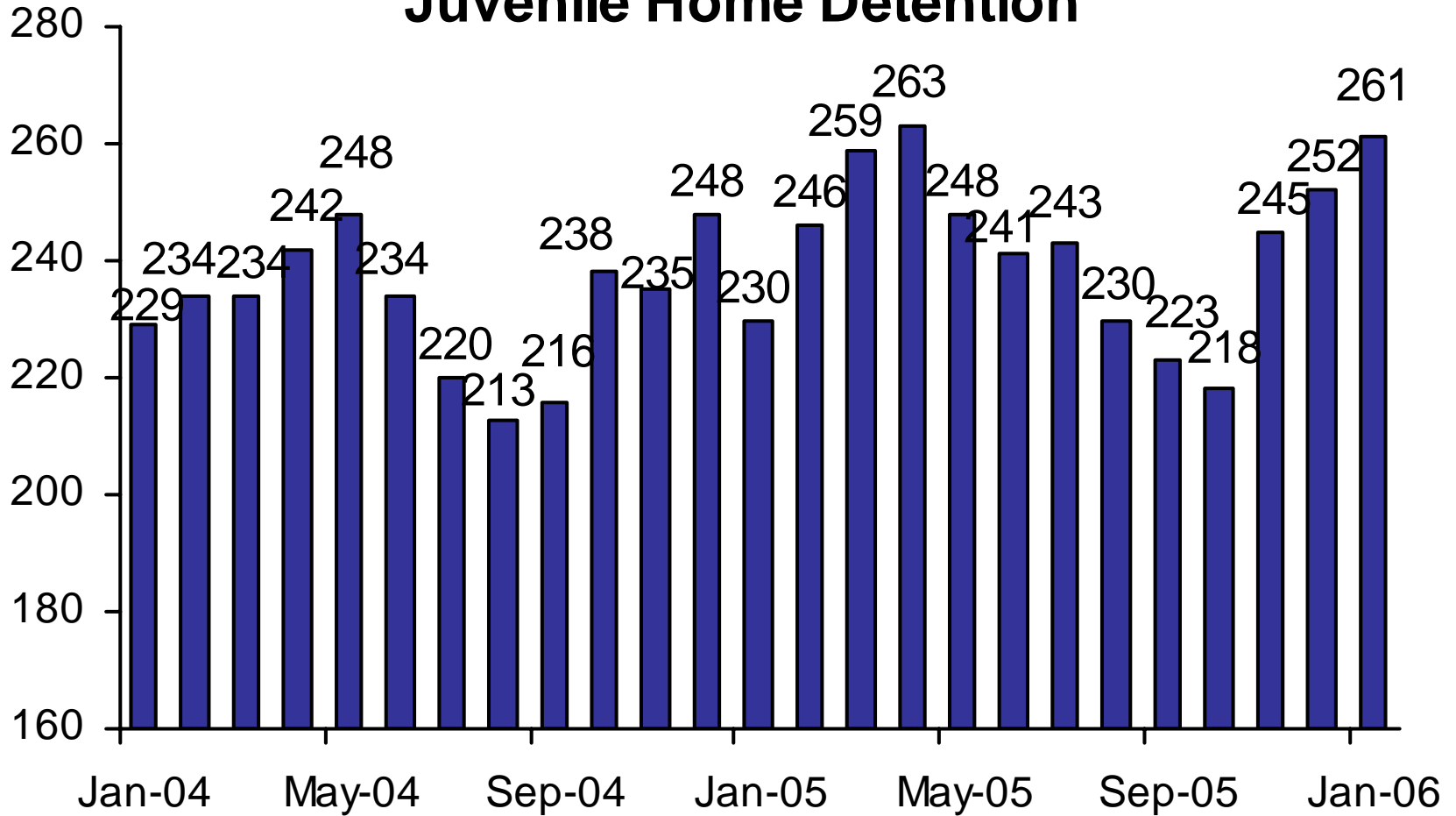


Juvenile Electronic Monitoring



The increase beginning in October 2005 is due to more accurate data collection.

Juvenile Home Detention



Juvenile Probation

■ # on standard probation ■ # on intensive probation

