



Maricopa County

Criminal Justice System

CRIMINAL JUSTICE SYSTEM NEWS – January 2008

Adult Incarceration

Bookings increased from December's 9,299 to January's 11,113. The **Average Daily Population increased slightly** from 8,901 to 8,913. The **Pretrial Population increased** in January (6,303) compared to December (6,214). The **Sentenced Population decreased** from 2,286 in December to 2,161 in January. **Agency Hold Populations increased** from 349 in December to 394 in January. **Overall Average Length of Stay (ALOS) decreased** in January from 29.1 to 24.9 days. **The ALOS for sentenced also decreased** from 30.2 to 27.1 days, while **the ALOS for agency holds decreased** from 63.4 to 59.4 days. **Pretrial ALOS increased** 7.7 to 8.2 days.

Superior Court Filings & Case Processing

Criminal filings increased from December (3,186) to January (3,473). **Terminations also increased** from 2,517 to 3,379. The resulting clearance rate was 97.3%. **The active Pending Case Inventory decreased** from 12,129 (most ever) to 11,789. **Filings into RCC increased** in January (1,976) compared to December (1,949), and **Filings into EDC also increased** from 1,039 in December to 1,252 in January. **The number of trials increased sharply** from 49 in December to 83 in January. **The Trial Rate increased**, from 1.5% to 2.4%.

Justice Court Filings

Forcible detainer filings increased from December (6,689) to January (7,176). **Overall Filings** also increased from December's (33,298) to January (37, 929).

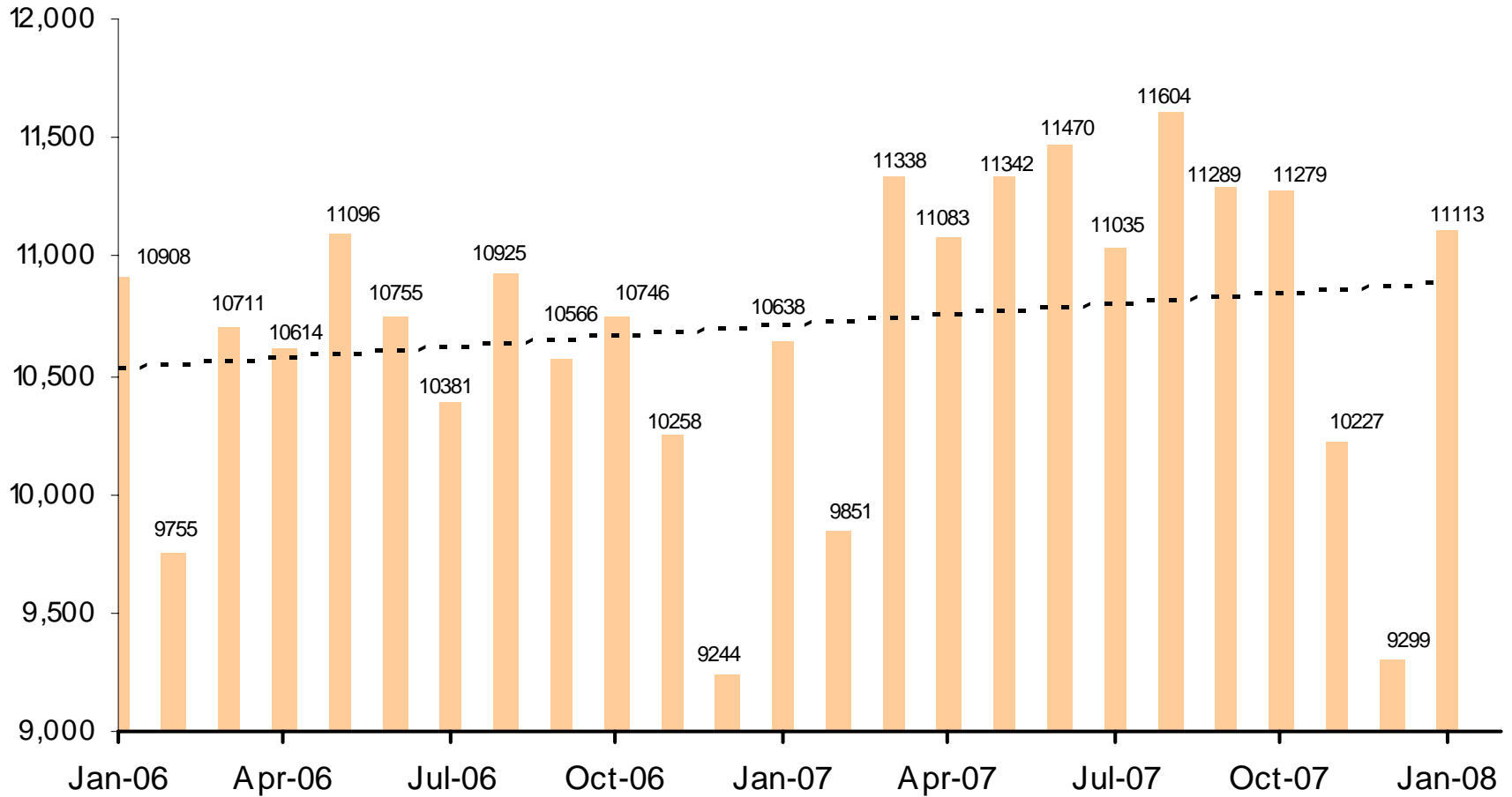
Adult Probation

Pretrial general supervision decreased from December (785) to January (752); and **pretrial intensive supervision decreased**, from 1,564 in December to 1,477 in January. **Electronic monitoring increased** from 242 to 287, the highest ever. **Levels of Standard Probation Supervision increased** from 29,523 to 29,716; while **levels of intensive probation supervision also increased** from 1,081 in December to 1,117 in January.

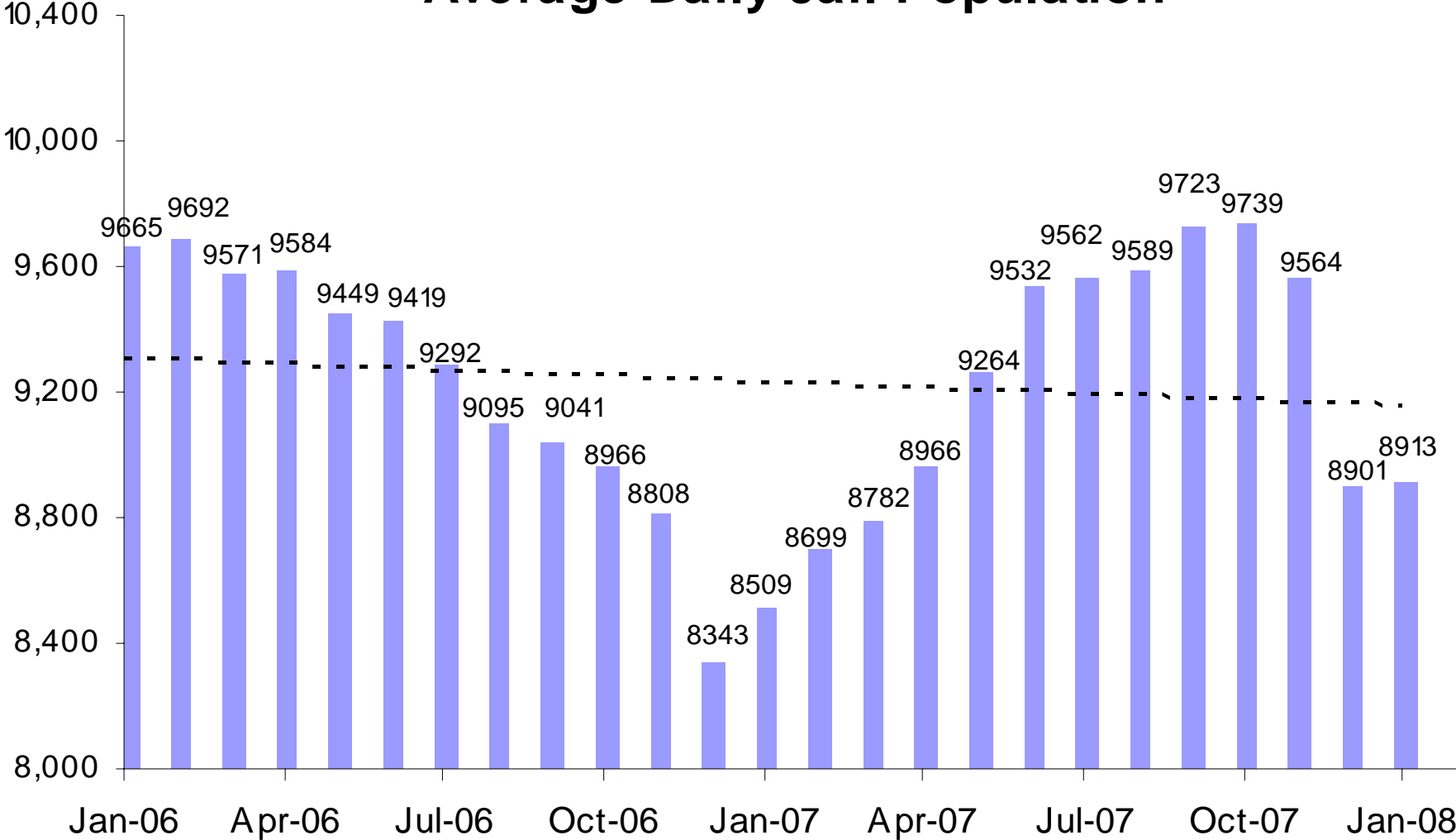
Juvenile Detention and Probation

Please note – due to conversion to iCIS database, January data is not available.

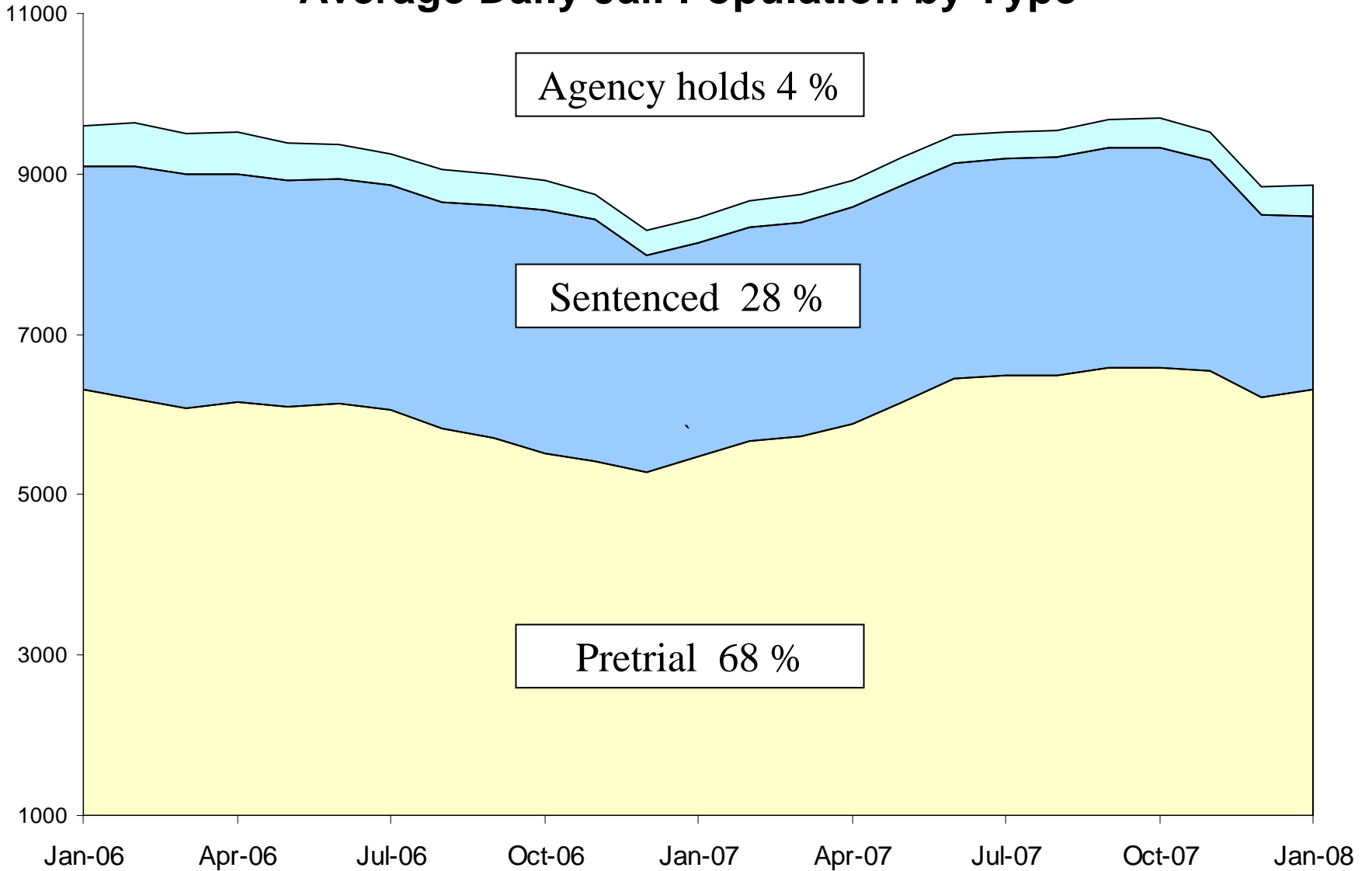
Jail Bookings



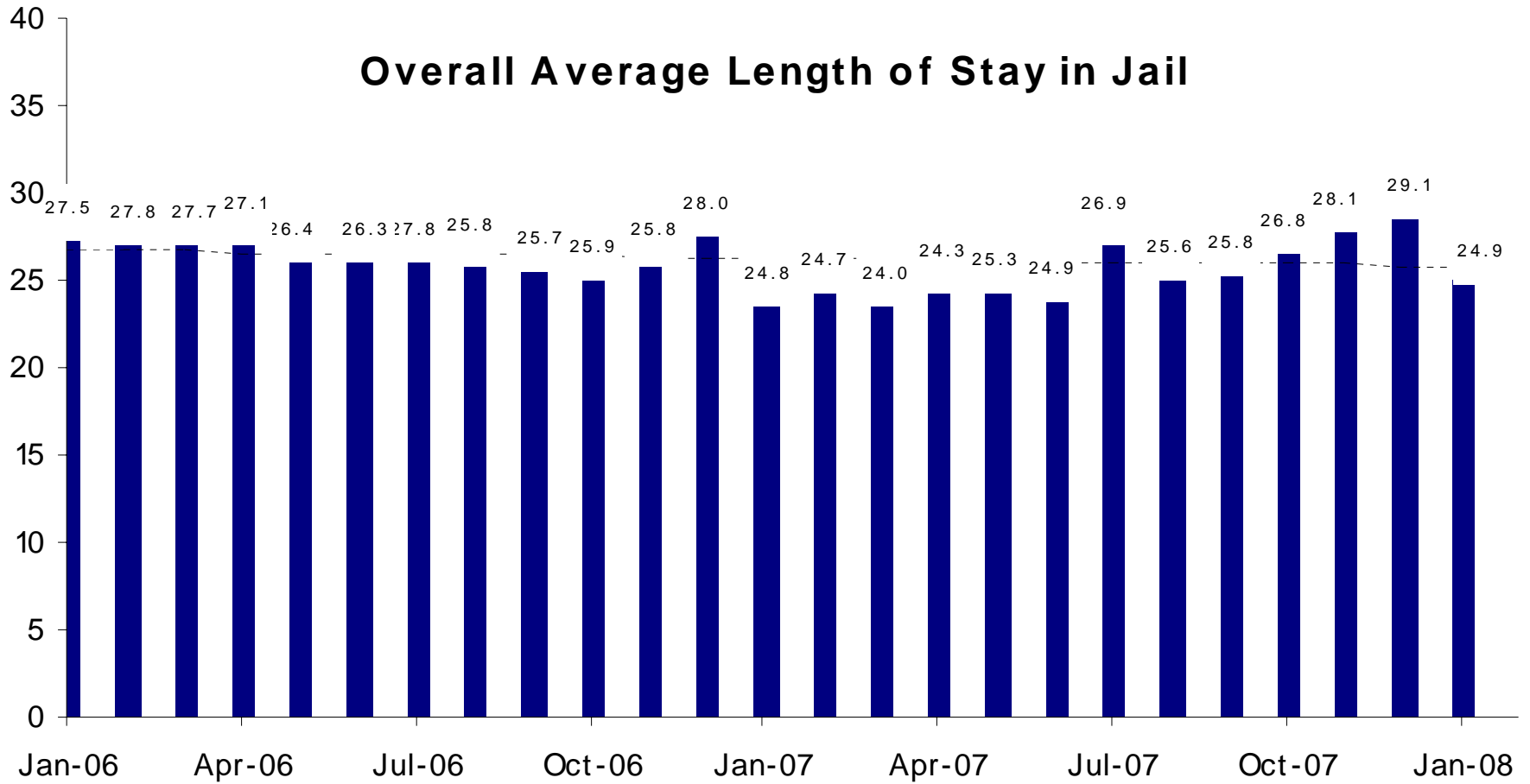
Average Daily Jail Population



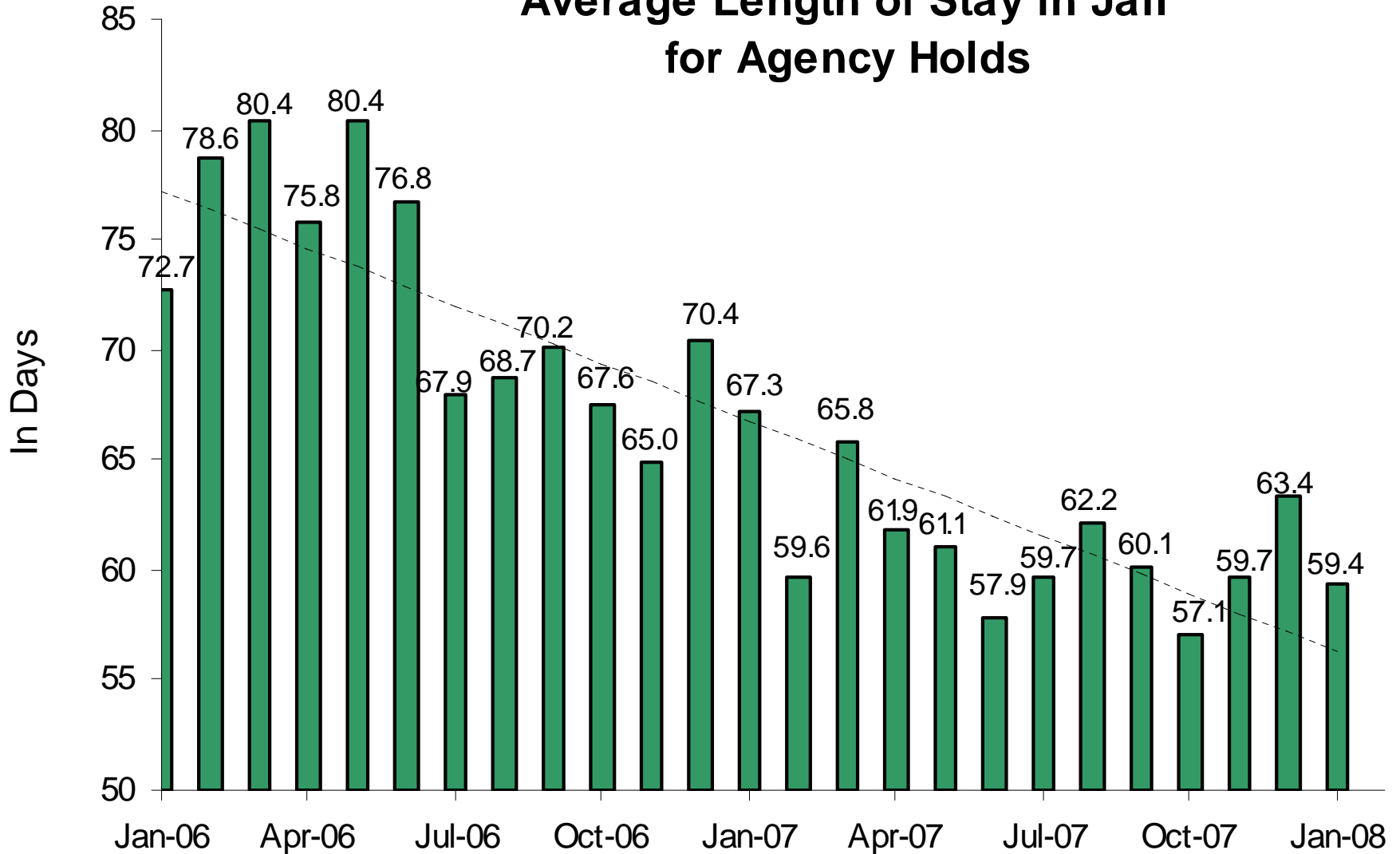
Average Daily Jail Population by Type



Overall Average Length of Stay in Jail

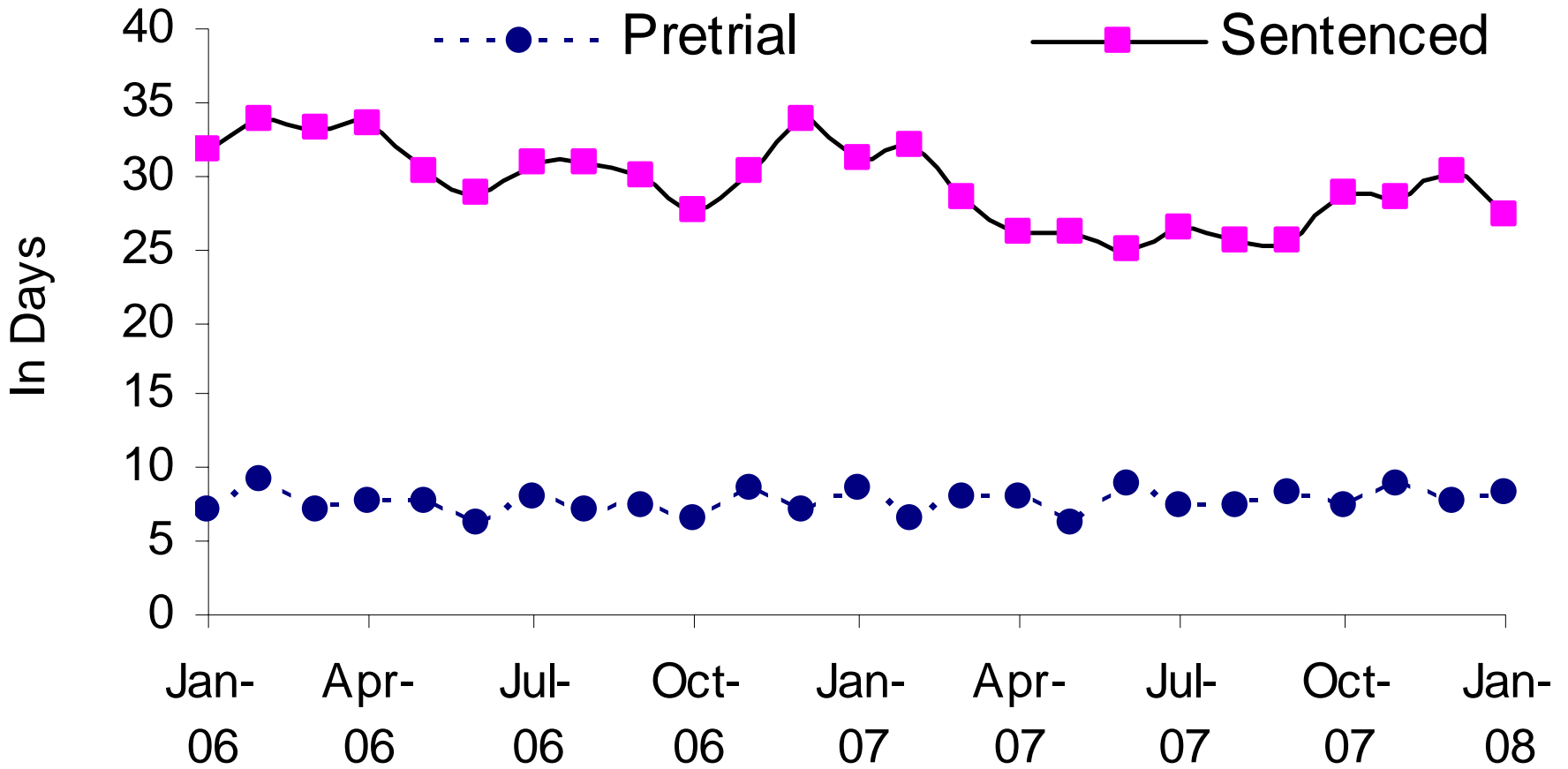


Average Length of Stay in Jail for Agency Holds



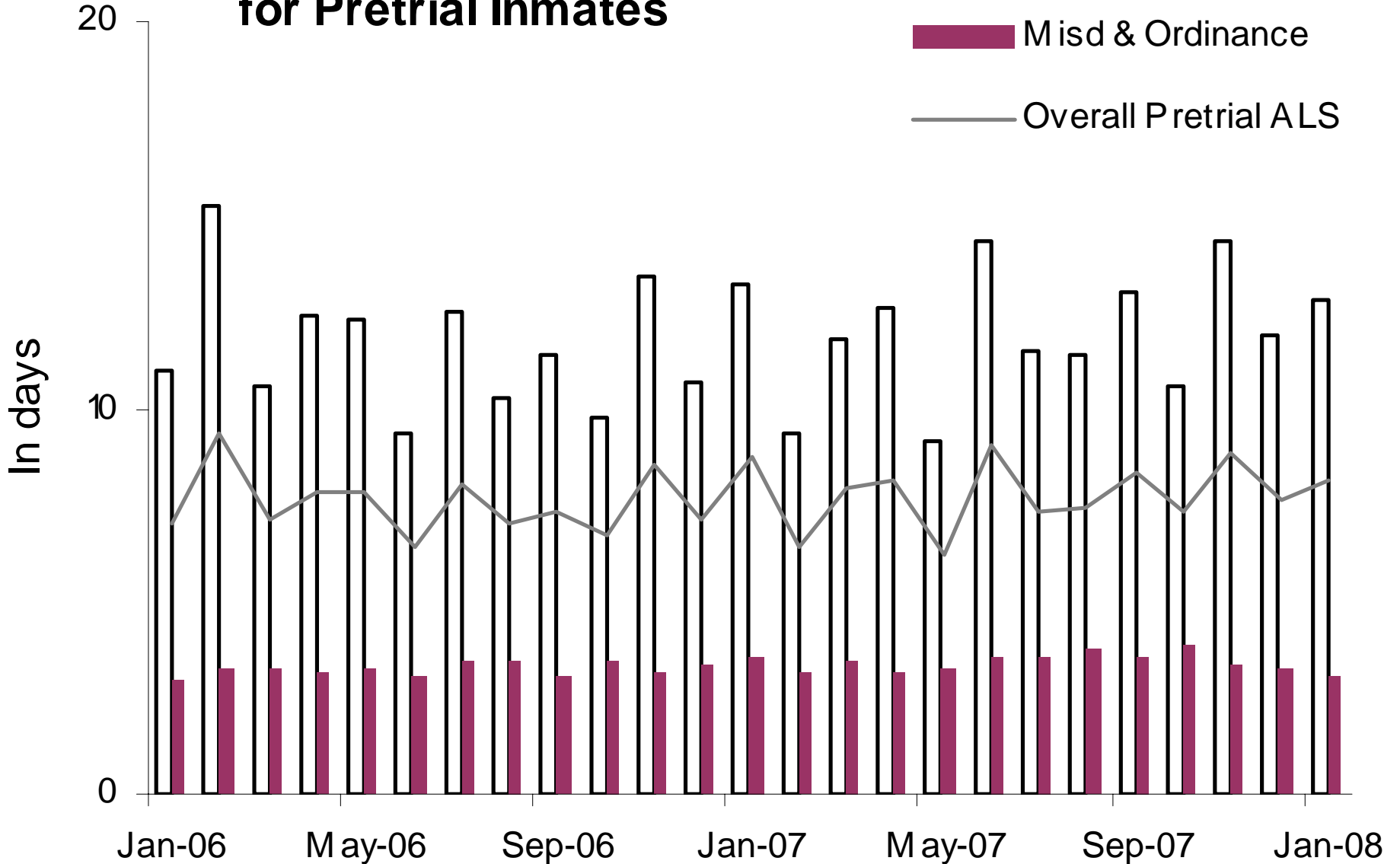
53% Dept of Corrections, 32% Federal agencies, 15% other

Average Length of Stay in Jail Pretrial vs Sentenced Population

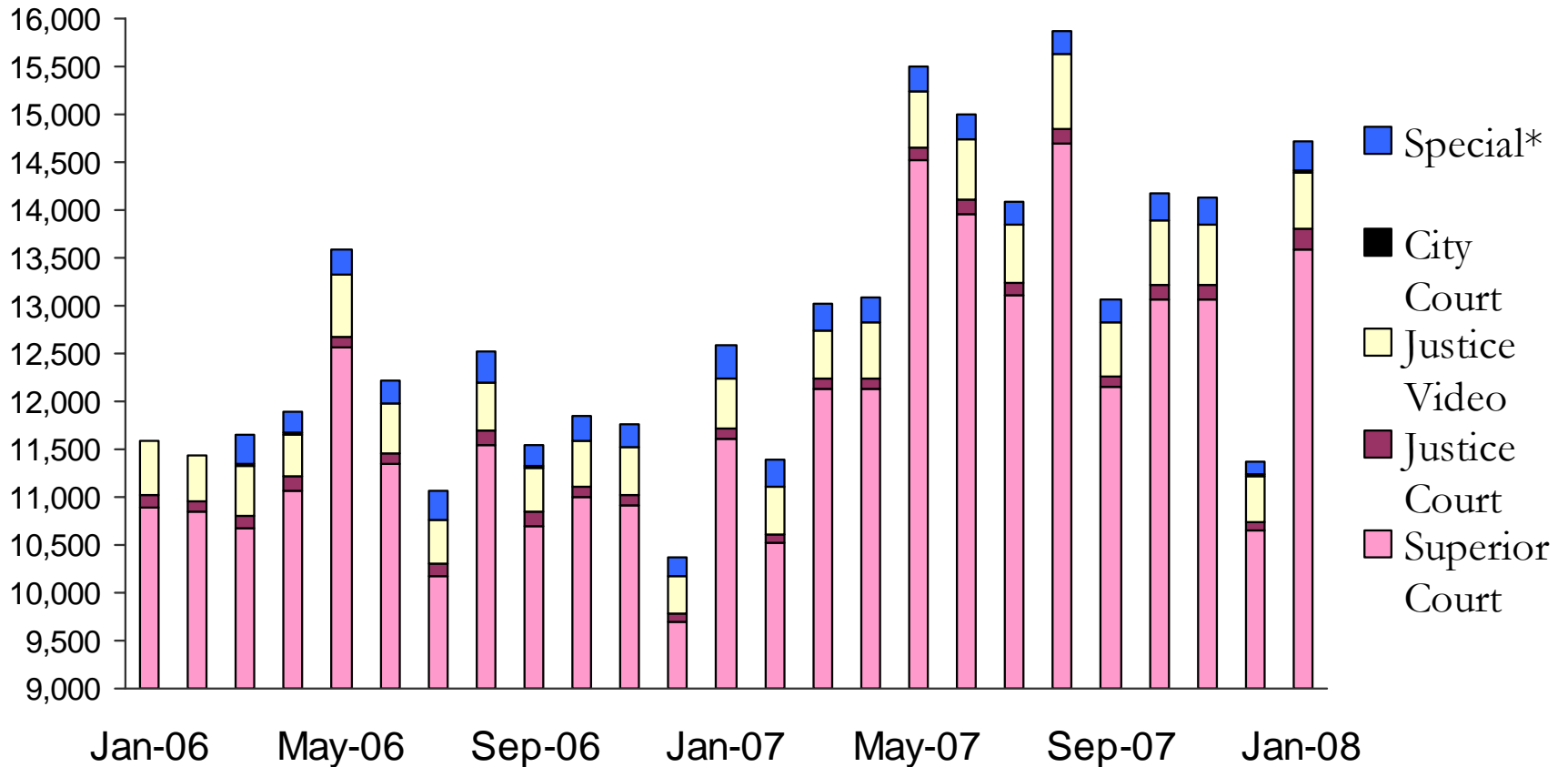


Average Length of Stay in Jail for Pretrial Inmates

Legend:
Feloncy (white bar)
Misd & Ordinance (maroon bar)
Overall Pretrial ALS (grey line)



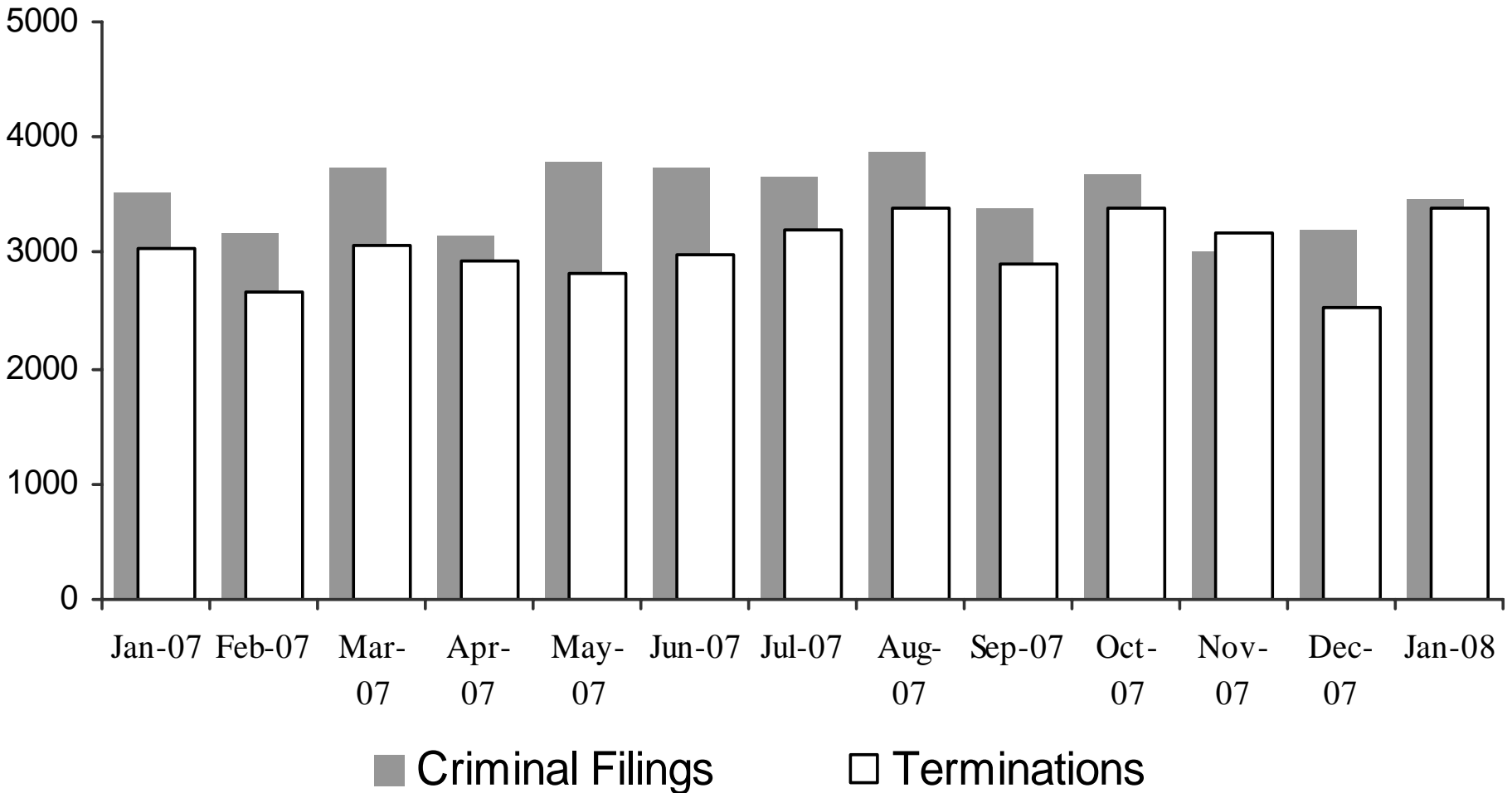
Sheriff's Office Transports for Inmate Court Appearances



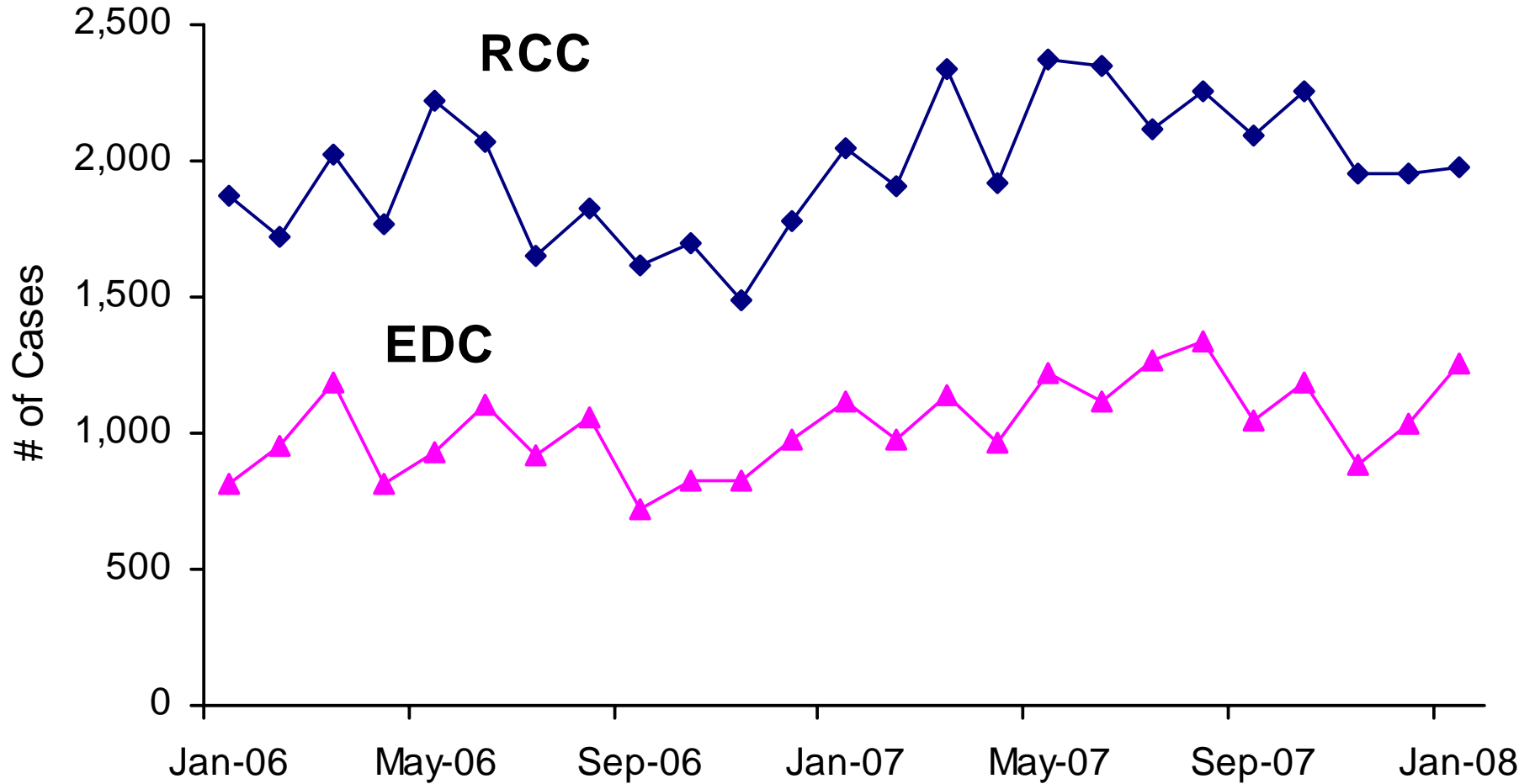
**“Special” cases added in March 2006 include Downtown Remands, SEJD Remands, and SEJD Unscheduled.*

Superior Court Filings and Terminations

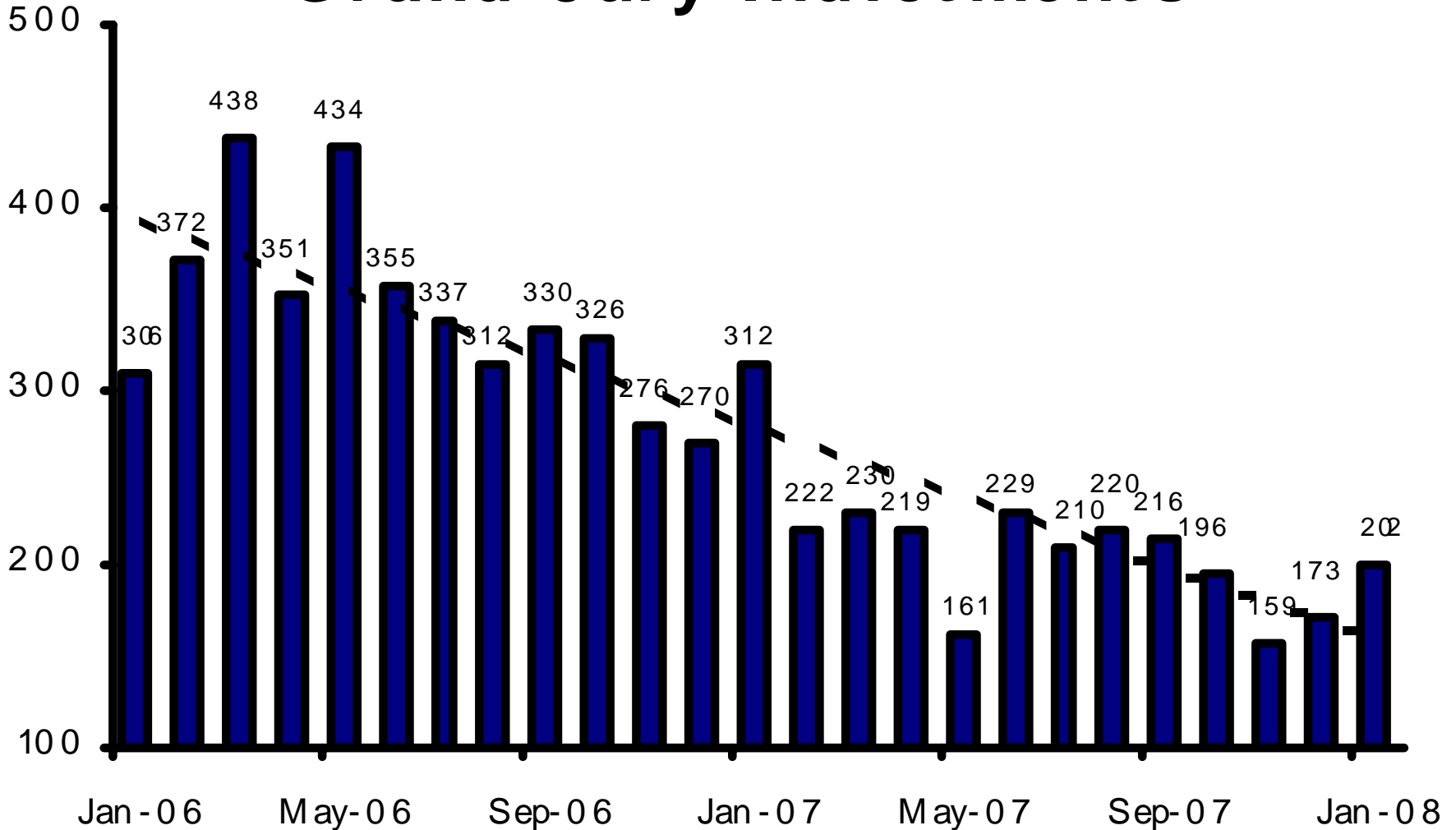
Direct Filing began in May 2002



Direct Complaints into Superior Court

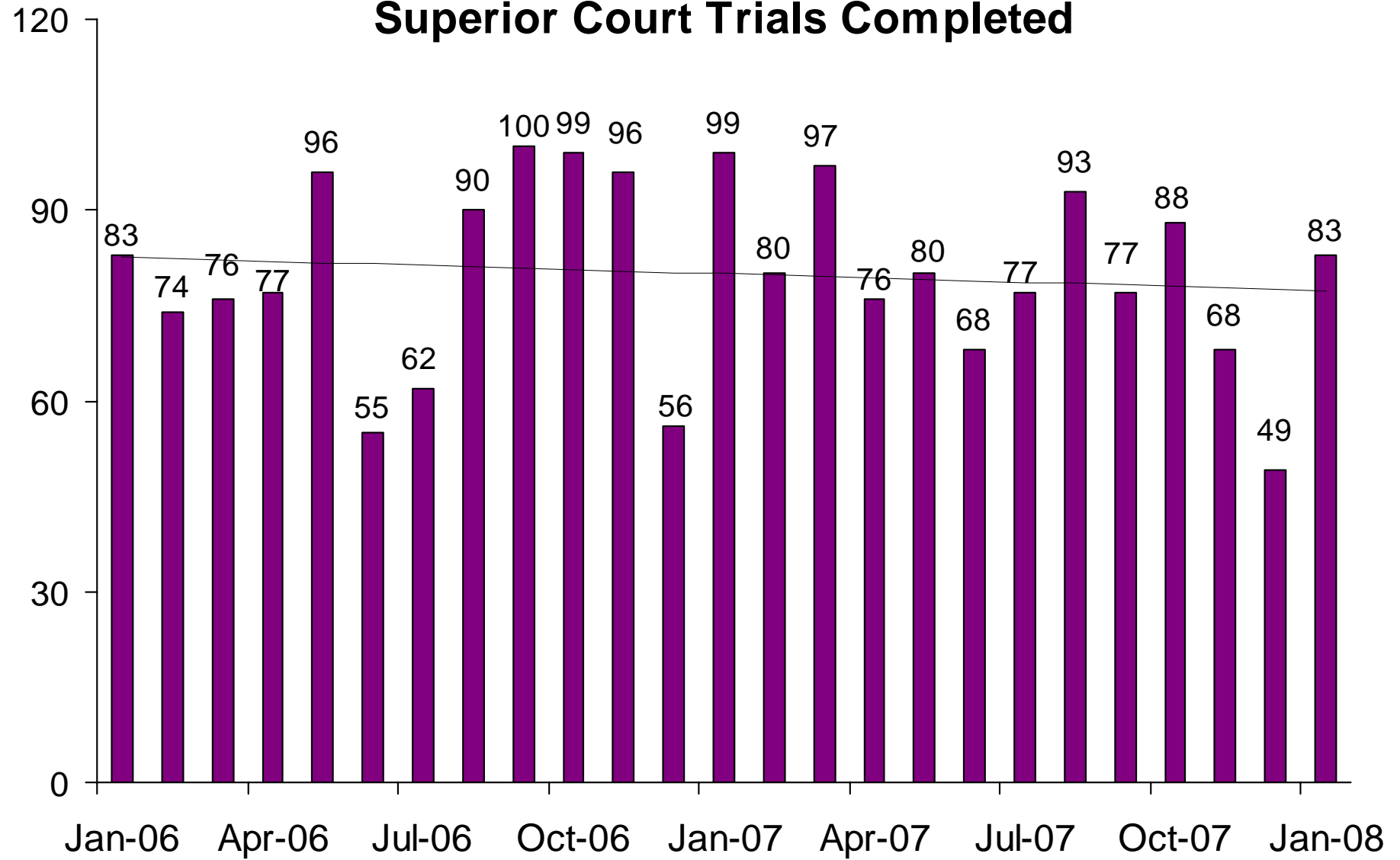


Grand Jury Indictments

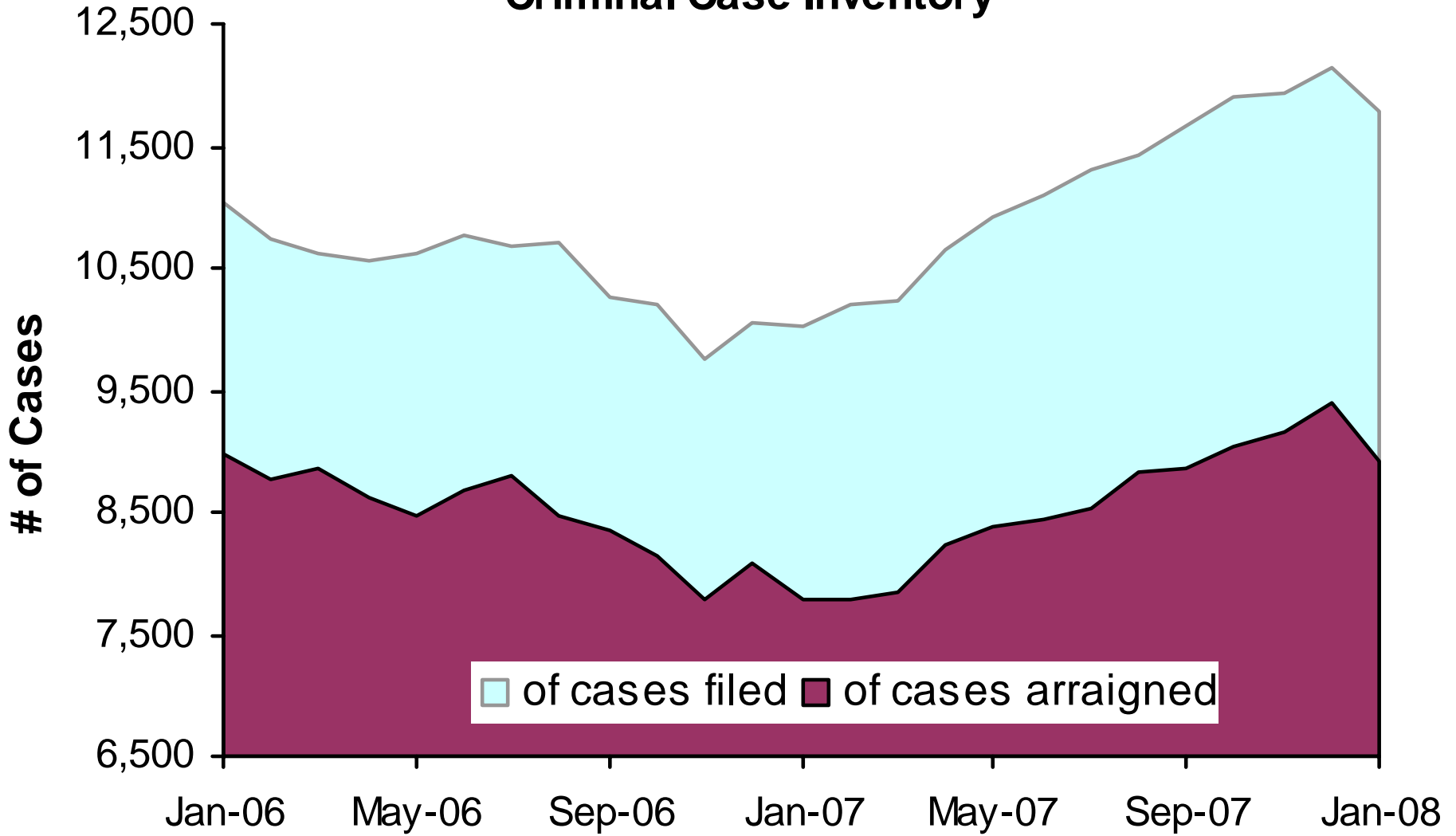


These numbers do not include notices of supervening indictments, non-EDC direct complaints, and juvenile direct complaints.

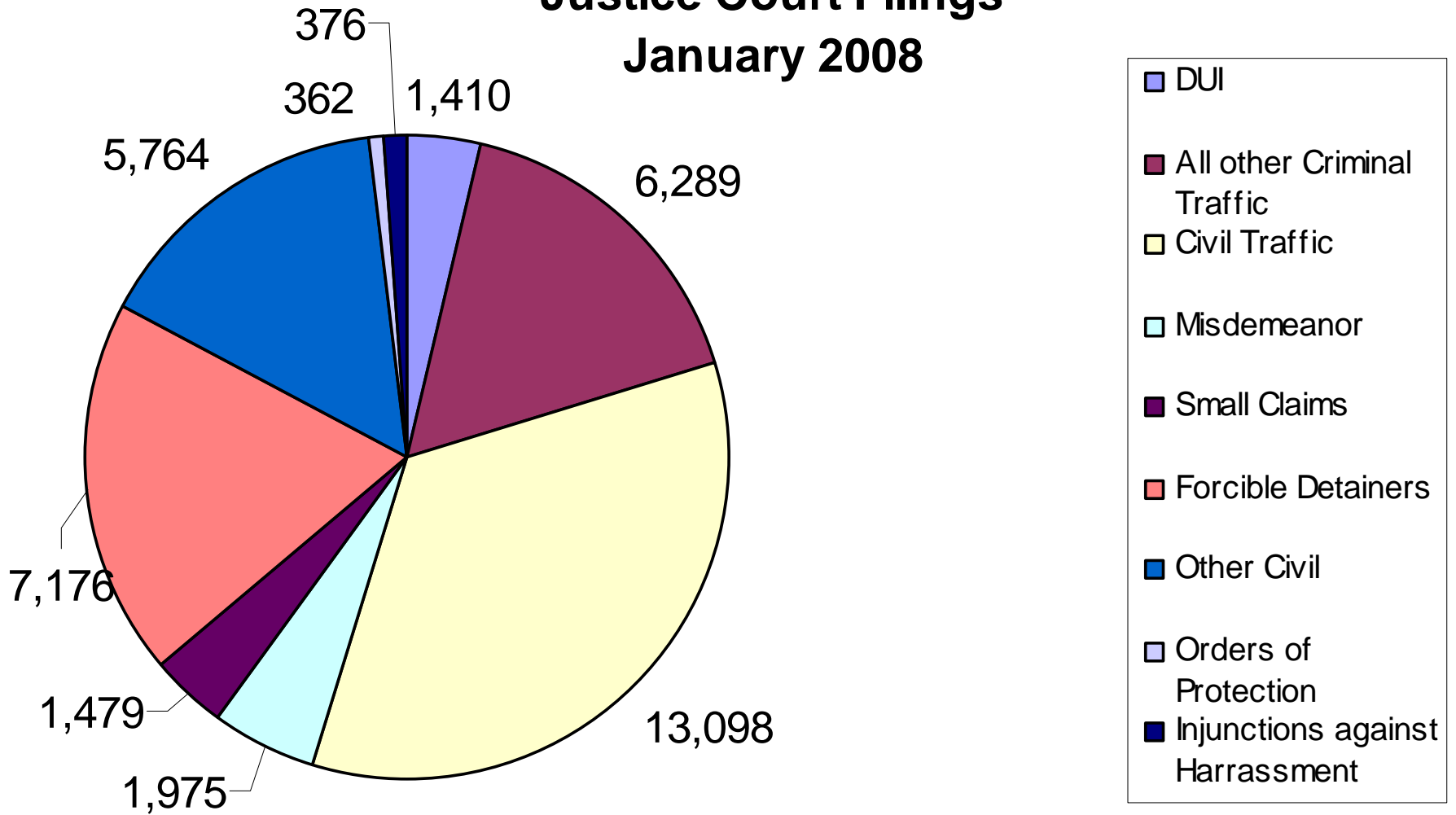
Superior Court Trials Completed



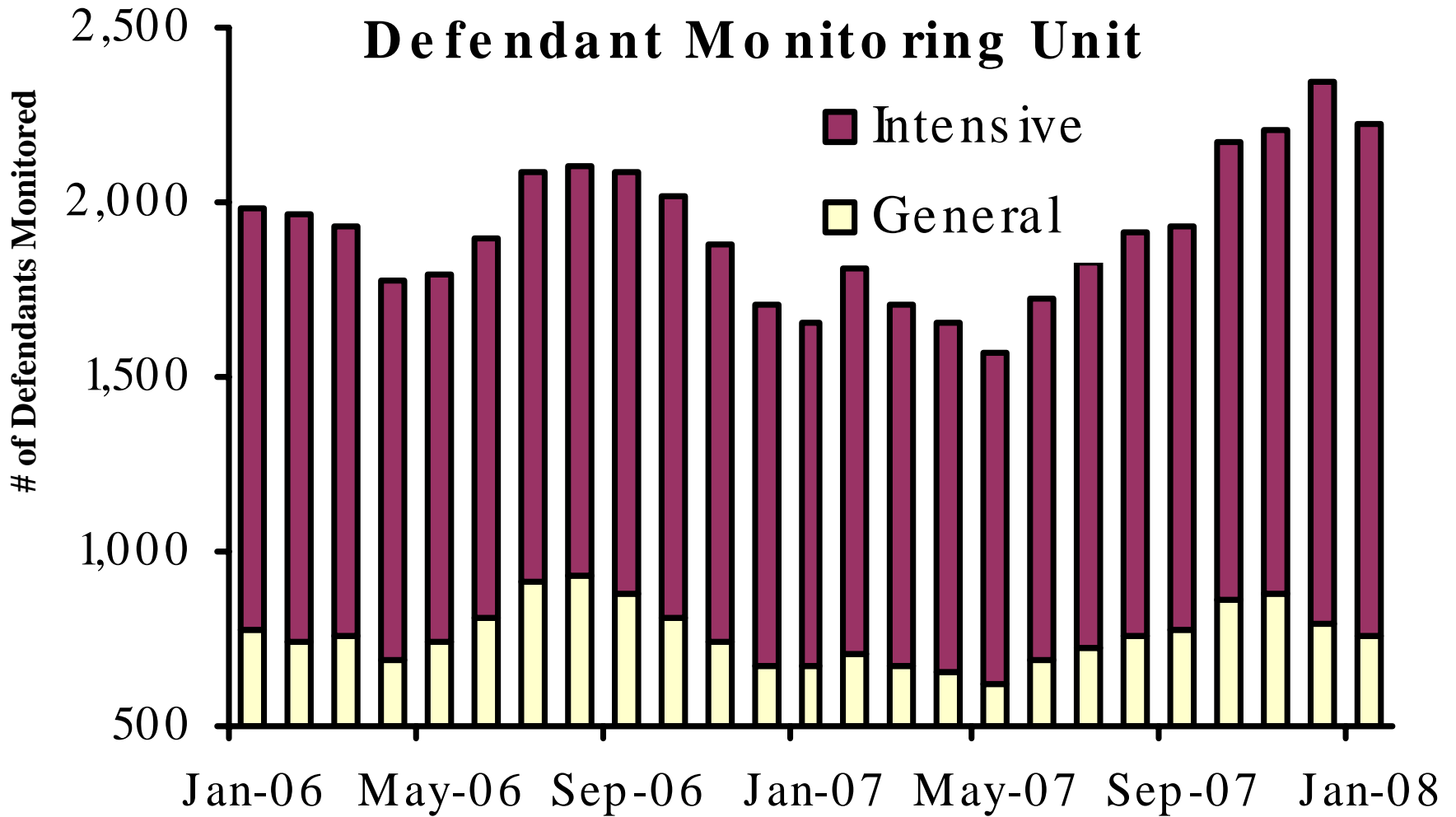
Active Pending Criminal Case Inventory



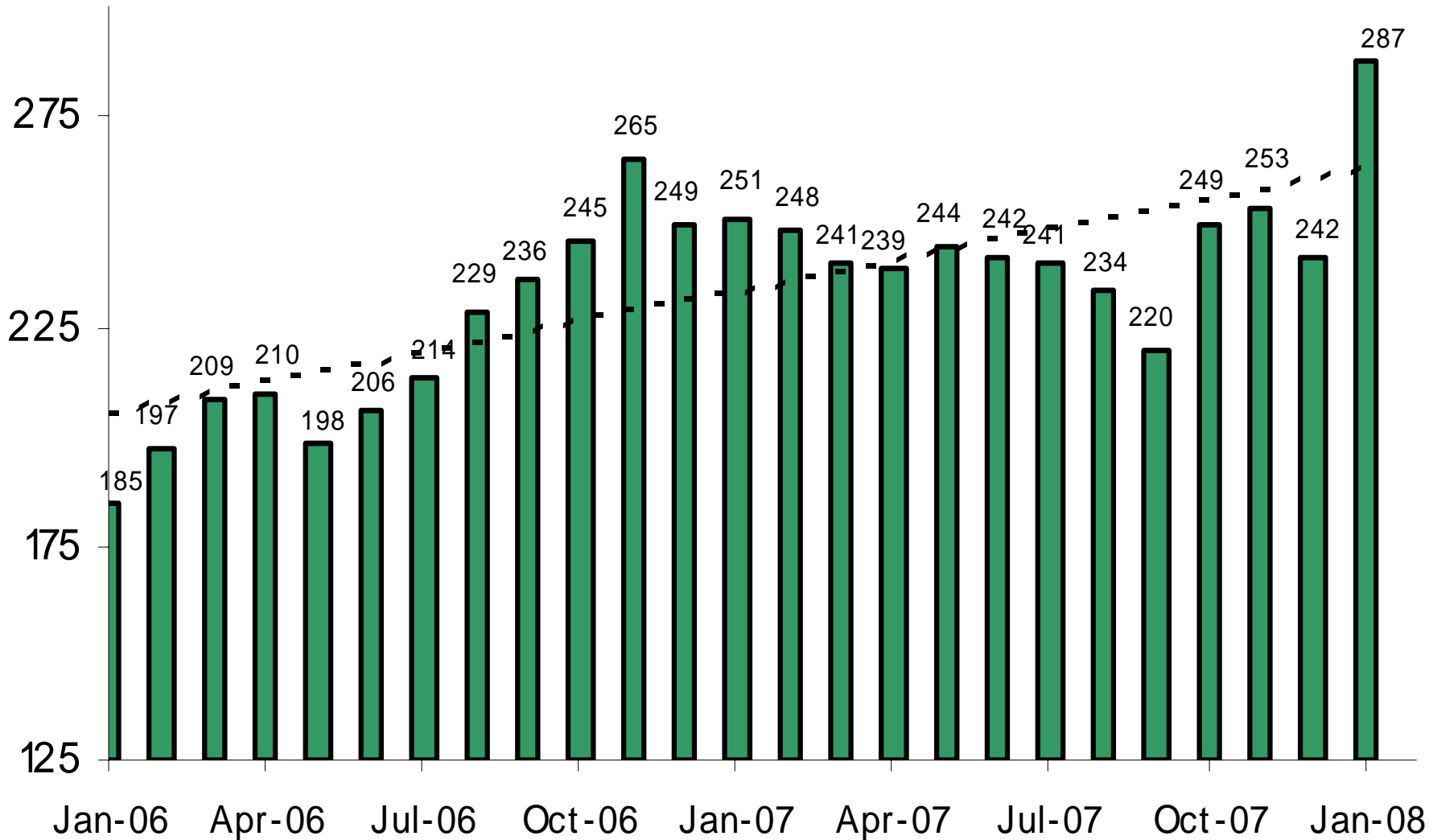
Justice Court Filings January 2008



Pretrial Supervision Defendant Monitoring Unit

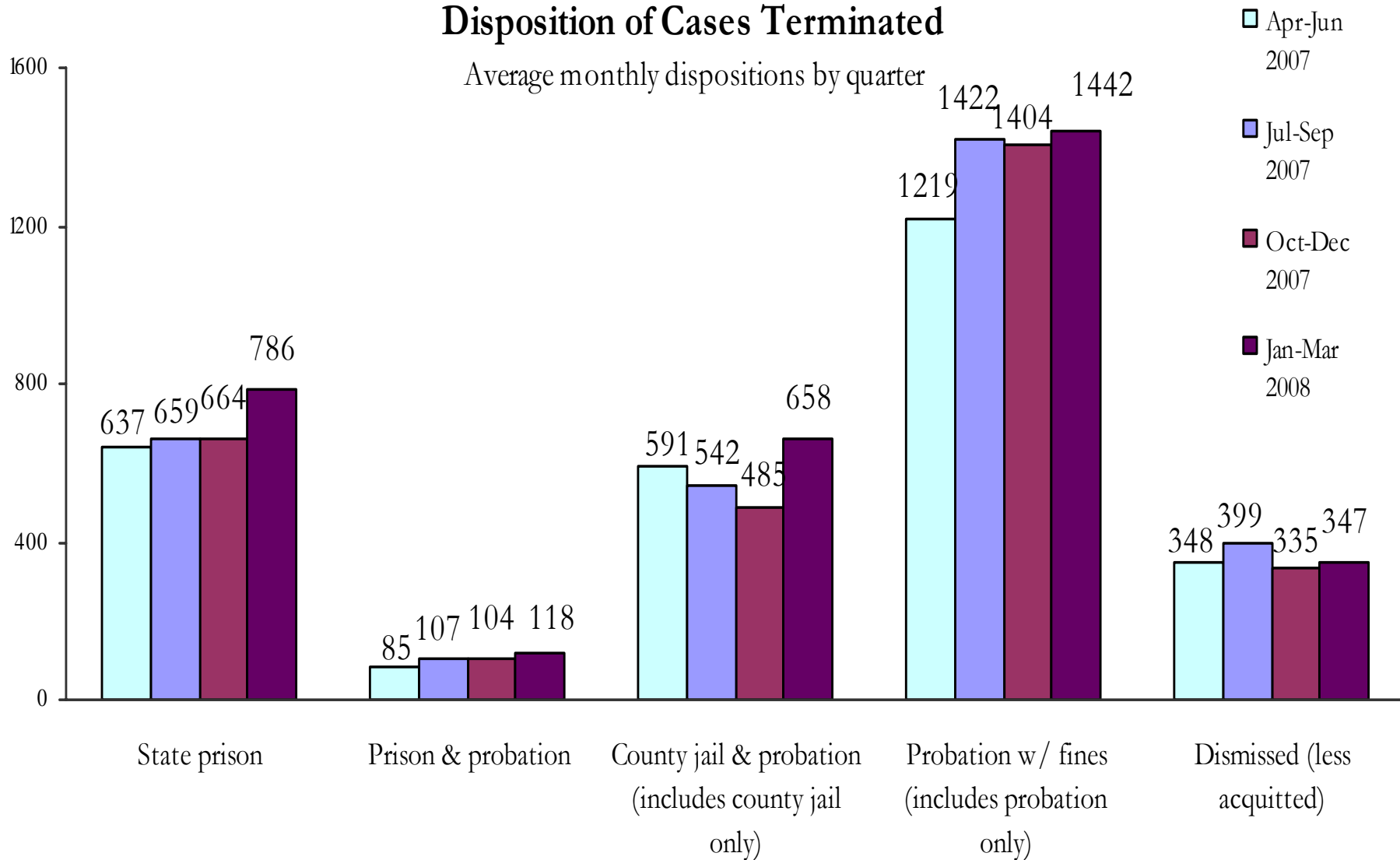


Pretrial Supervision Defendants on Electronic Monitoring

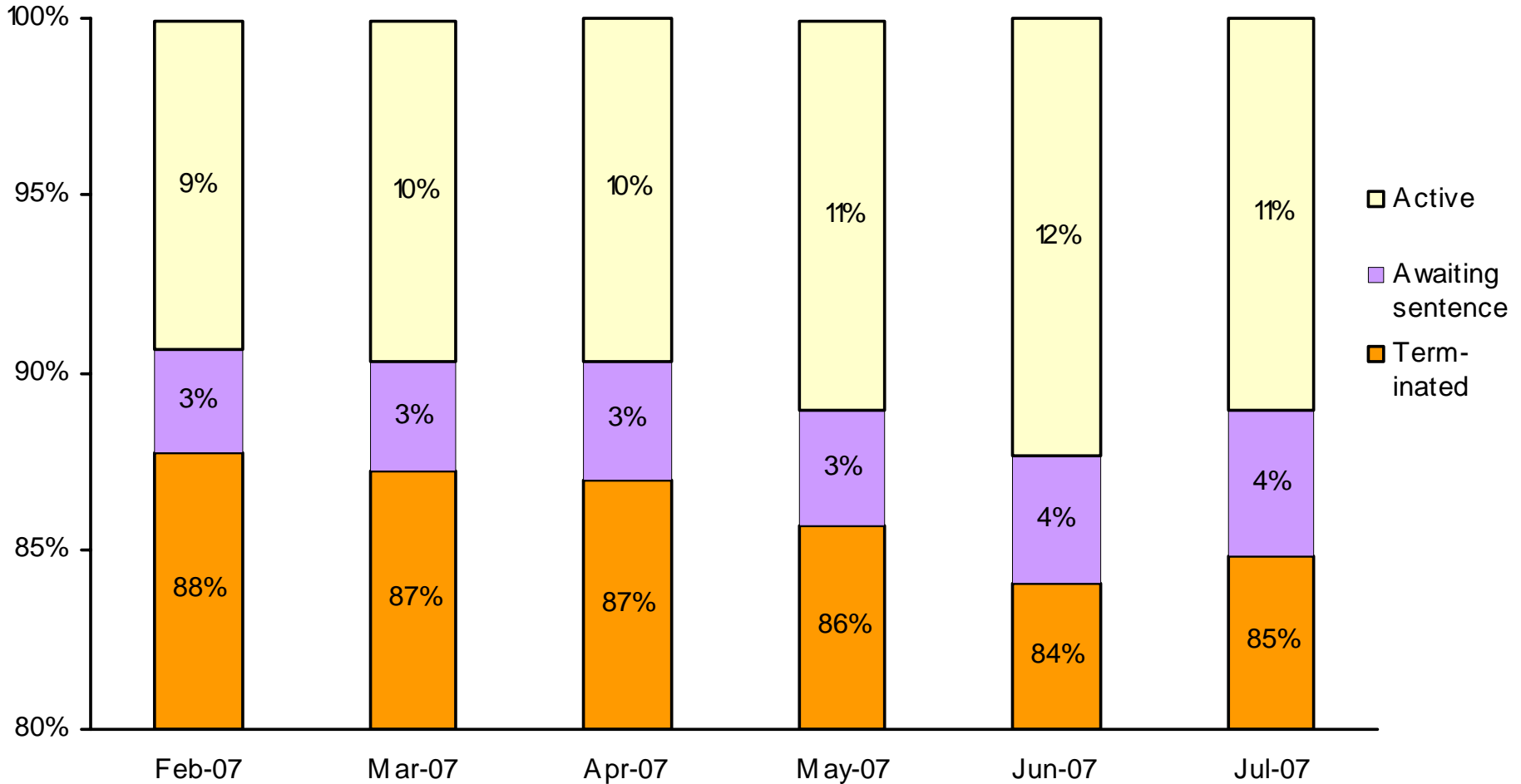


Disposition of Cases Terminated

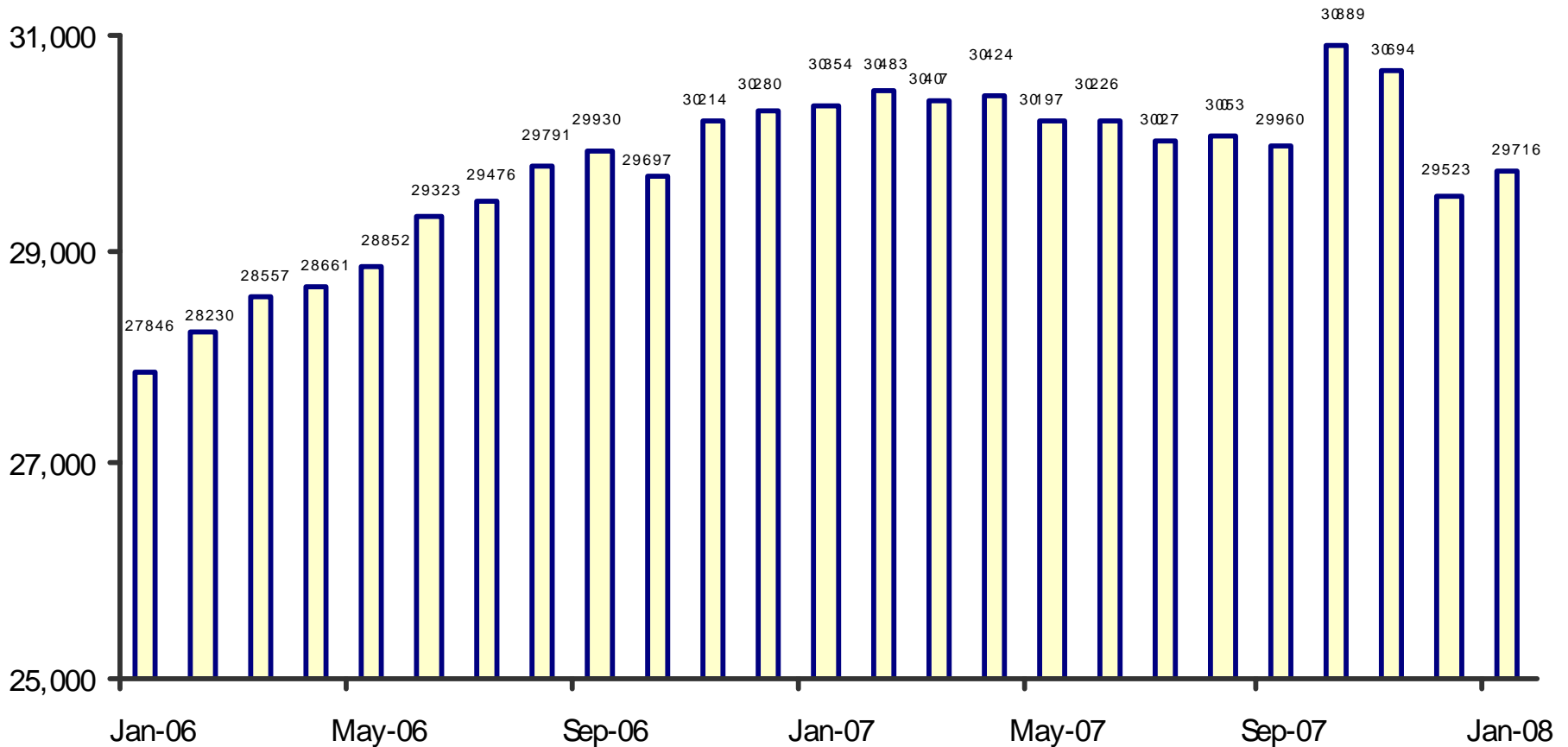
Average monthly dispositions by quarter



Status of Cases After 180 Days

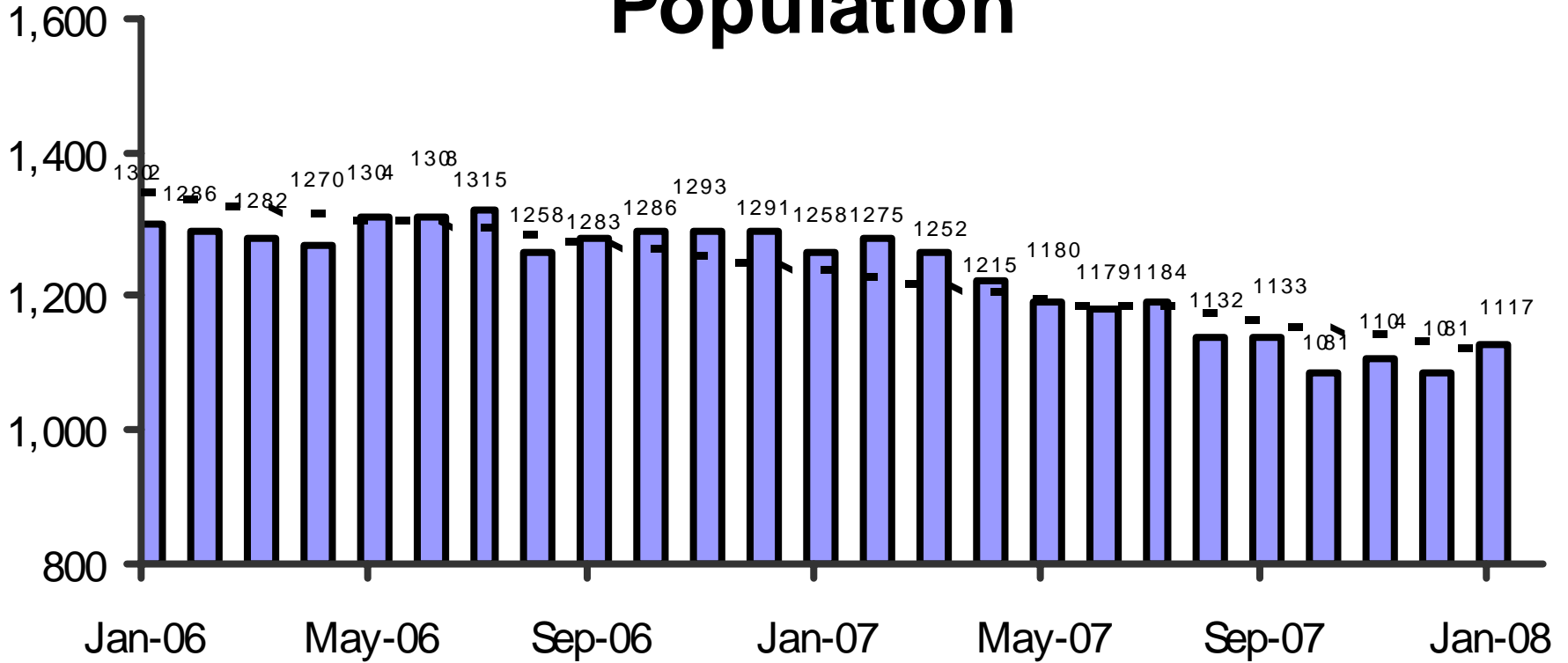


Adult Probation Standard Supervision Population

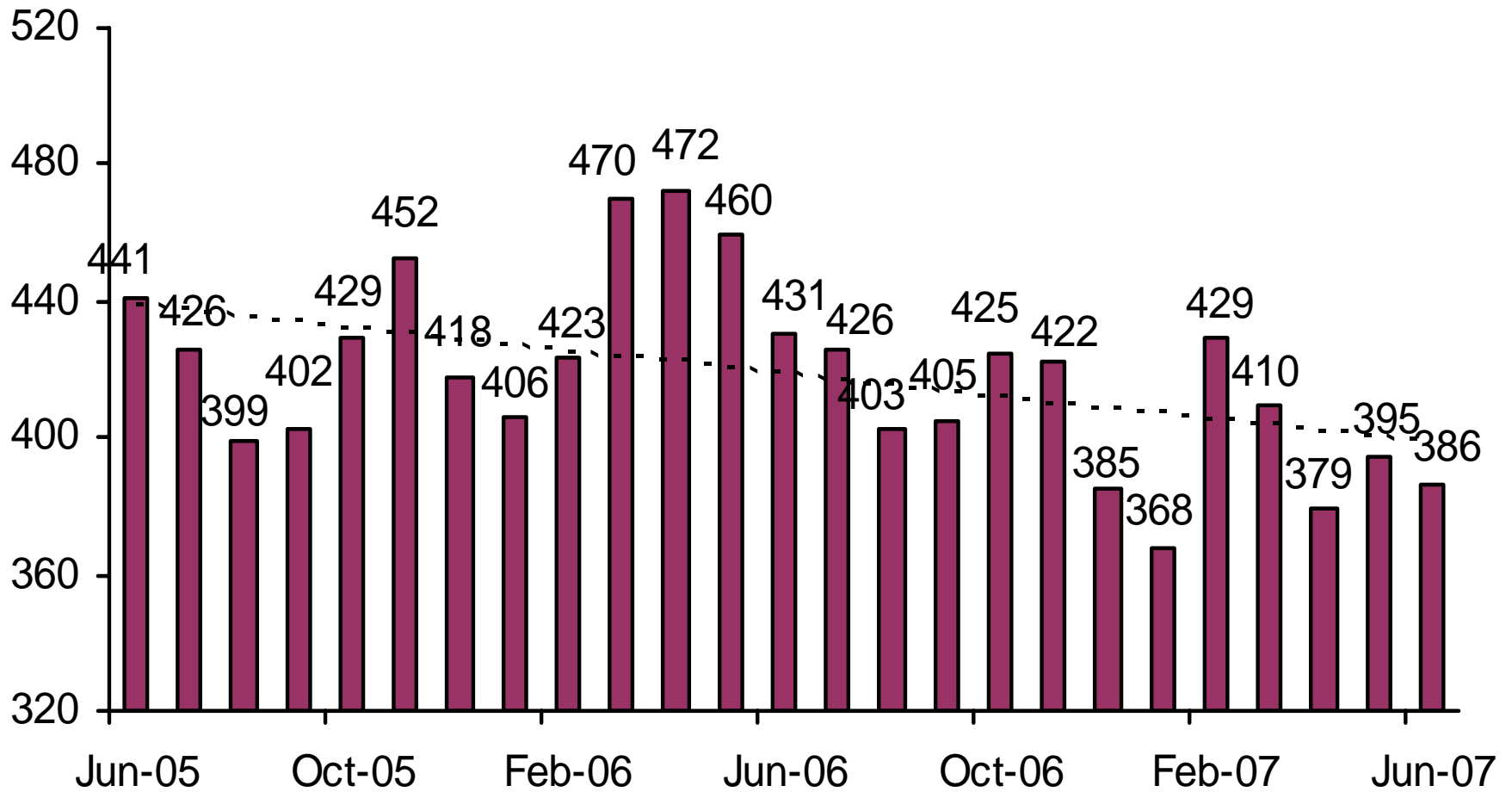


This population includes Interstate Compact and Report and Review caseloads, as reported to the Board of Supervisors and JLBC.

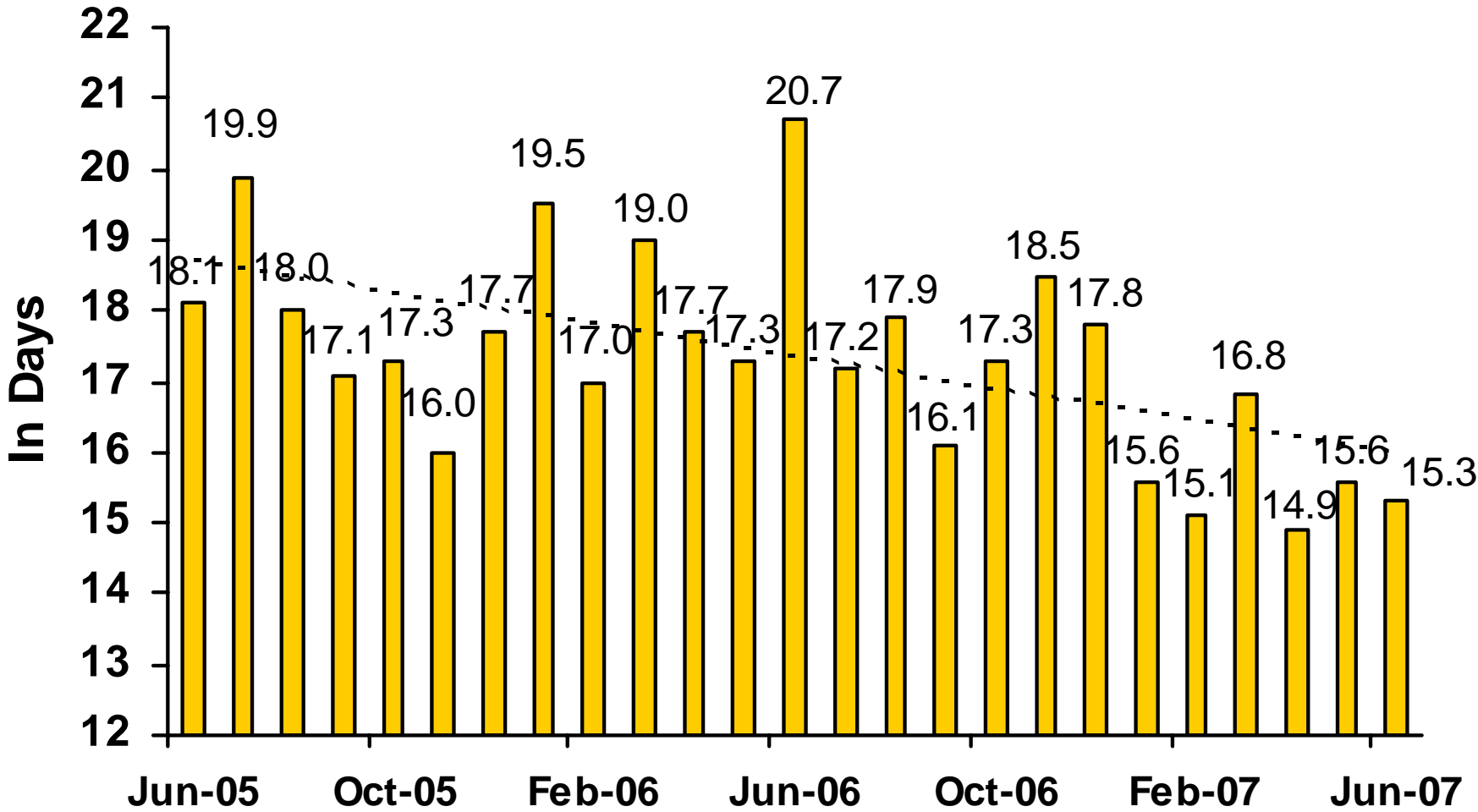
Adult Probation Intensive Supervision Population



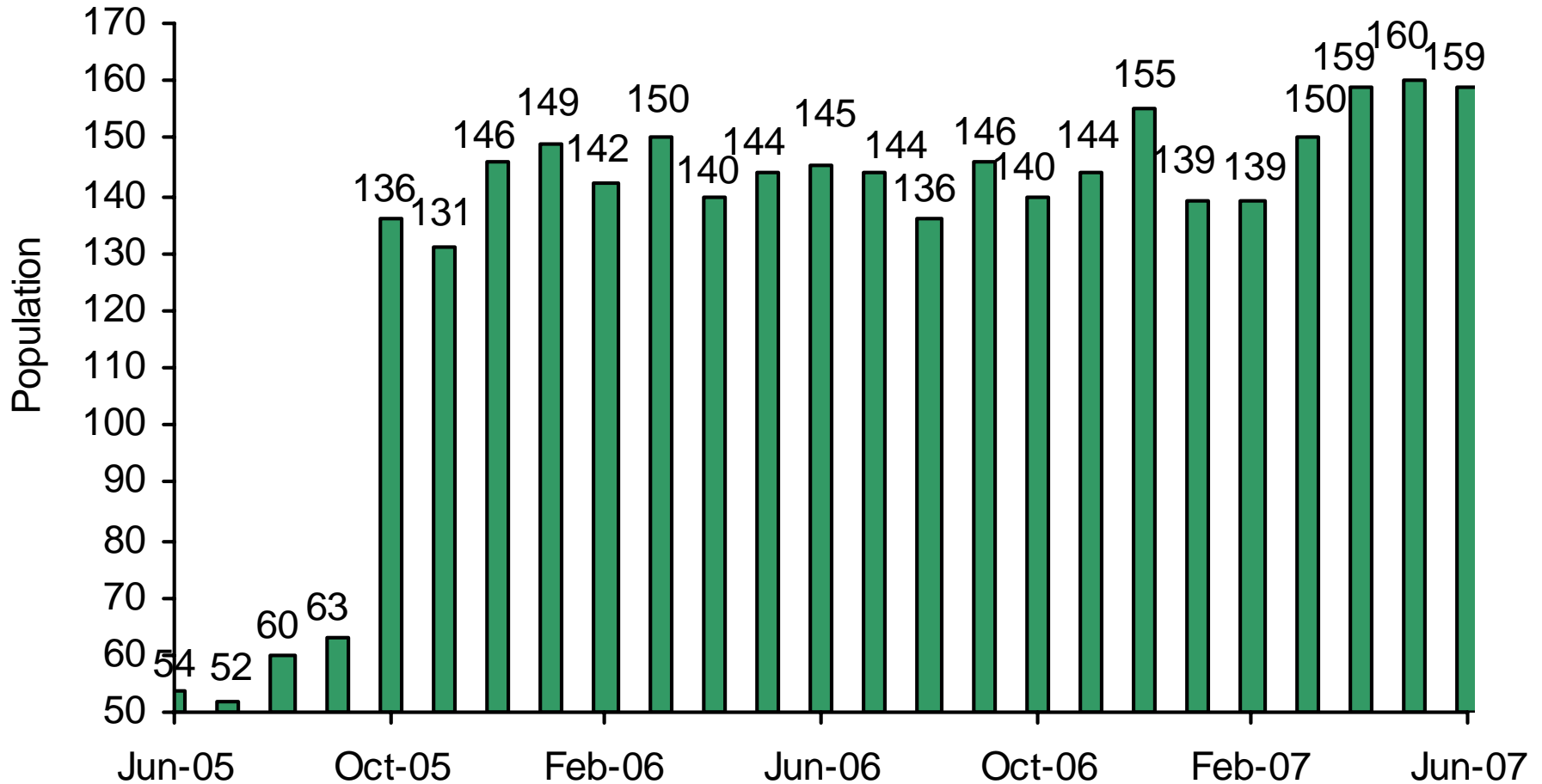
Juvenile Detention Average Daily Population



Juvenile Detention Average Length of Stay

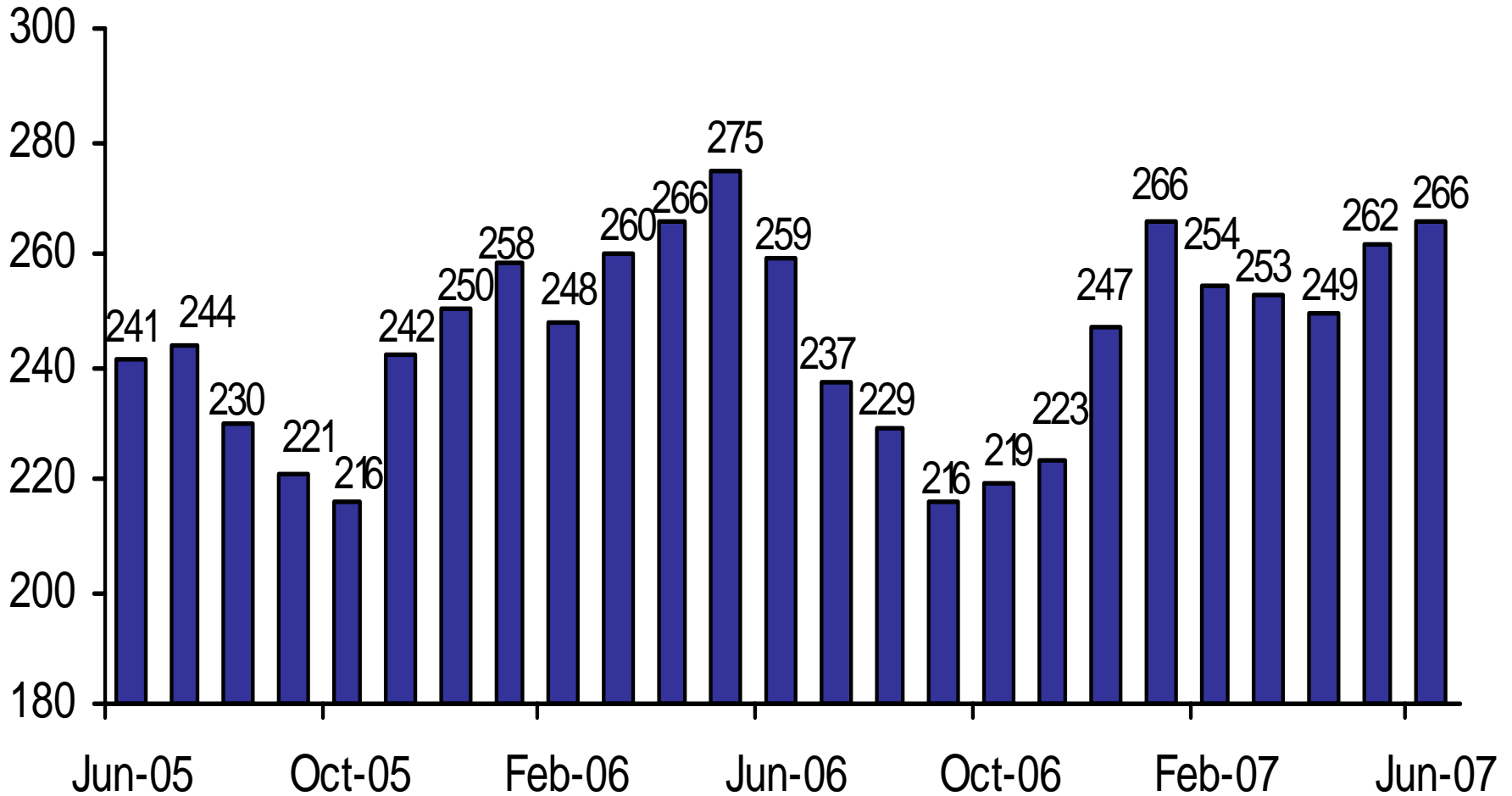


Juvenile Electronic Monitoring



The increase beginning in October 2005 is due to more accurate data collection, including counting Intensive Probation use in addition to Standard use.

Juvenile Home Detention



Juvenile Probation

■ # on standard probation ■ # on intensive probation

