



Monthly Performance Report for April 2005

Monthly Averages						
	FY 2001	FY 2002	FY 2003	FY 2004	FY 2005 to-date	Apr. 2005
Sheriff's Office						
Bookings	9,614	9,641	9,875	10,176	9,916	10,179
Average Daily Population	7,059	7,557	8,044	8,657	8,973	9,143
Avg Length of Stay (in days)	22.4	23.8	24.4	26.0	27.6	27.0
Superior Court						
Filings	2,342	2,515	2,904	3,062	2,900	3,193
Terminations	2,259	2,367	2,330	2,612	2,737	2,719
Clearance Rate	96%	94%	80%	85%	95.1%	85.2%
Active Pending Inventory	7,990	7,419	8,123	9,106	9,919	10,136
Trials Completed	69	61	59	42	51	46
Trial Rate	2.9%	2.4%	2%	1.4%	1.8%	1.4%
Adult Probation						
Pretrial General Supervision	544	609	700	974	997	948
Pretrial Intensive Supervision	362	356	331	672	809	787
Pretrial Electronic Monitoring	51	78	97	154	161	167
Standard Probation Supervision	22,788	24,448	25,400	23,957	25,963	26,567
Intensive Probation Supervision	1,666	1,564	1,267	1,079	1,467	1,462
Juvenile Probation and Detention						
Avg Daily Detention Pop	400	407	401	431	442	481
Avg Length of Stay (in days)	14.1	14.7	15.1	16.6	18.9	20.2

Criminal Justice System News

Adult Incarceration: Bookings decreased slightly in April (10,179) from March (10,280). Average daily population increased in April for all populations, a trend seen since December. The pretrial population increased to 5,735 in April from 5,657 in March; the sentenced population increased to 2,879 from 2,811; agency holds increased to 489 from 476.

The average length of jail stay for agency holds decreased from 74.5 days in March to 71.2 days in April. Pretrial ALOS increased from 7.6 days to 8.2 days, while sentenced ALOS stayed nearly the same (31.9 days in March vs 31.5 in April).

Filings & Case Processing: April's Superior Court filings were at almost 3,200 cases, which was a decrease from March's high of over 3,700 cases, but still remained well above the first couple of months in 2005. Terminations fell from almost 3,200 cases to over 2,700. The active pending case inventory continued to increase to over 10,100 cases. Although both RCC and EDC direct filings dropped from the previous month, they too remained high.

Adult Probation: Pretrial general supervision numbers decreased slightly (976 in March to 948 in April). However, pretrial intensive supervision and electronic monitoring increased slightly in April. Electronic monitoring was at its highest level ever.

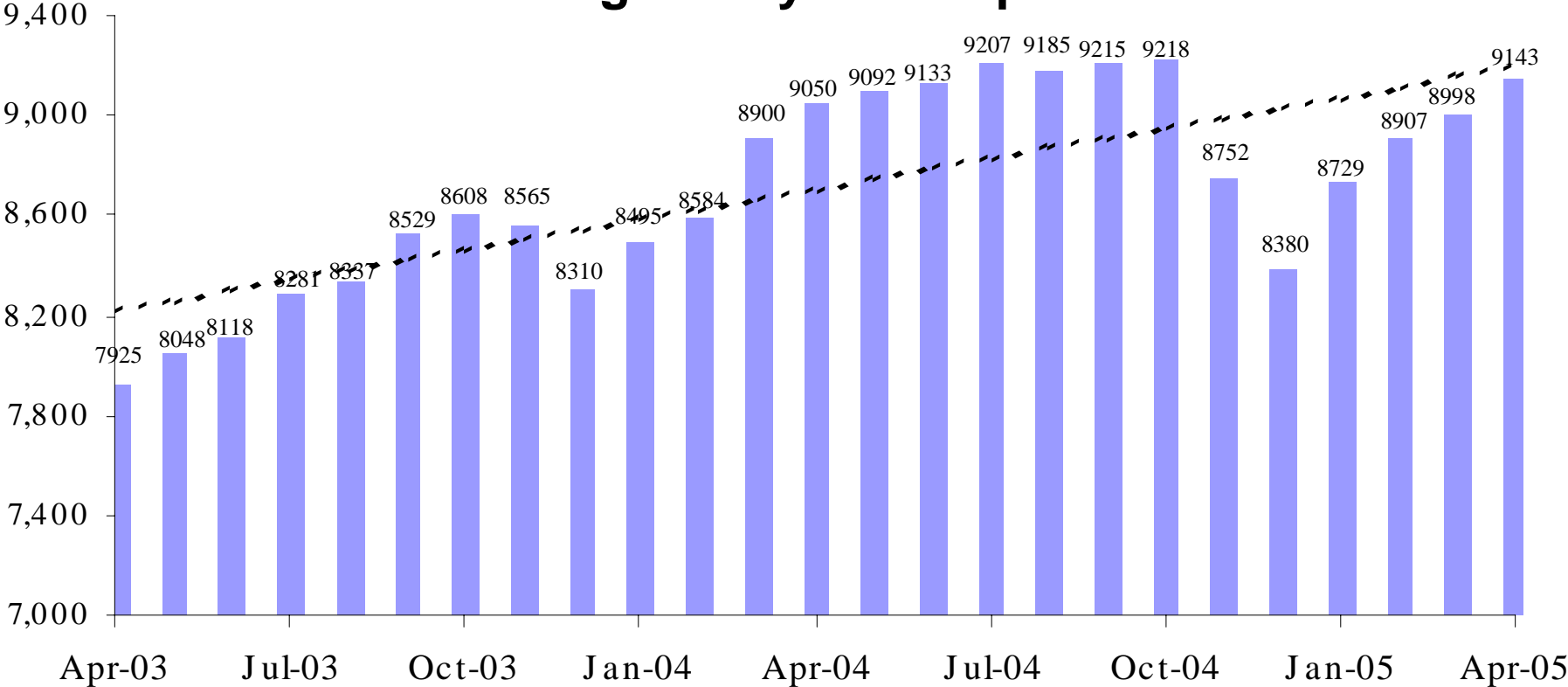
FY numbers were changed back through FY02 to reflect a more accurate way of counting population levels. The data shared in this report are now the data reported to the Board of Supervisors and the Joint Legislative Budget Committee. Levels of standard probation supervision increased from 26,144 in March to 26,567 in April. Intensive probation supervision increased slightly.

Juvenile Detention: The average daily population increased slightly in April, as did average length of stay. Home detention increased from 259 in March to 263 in April. This is the highest seen since May 2000.

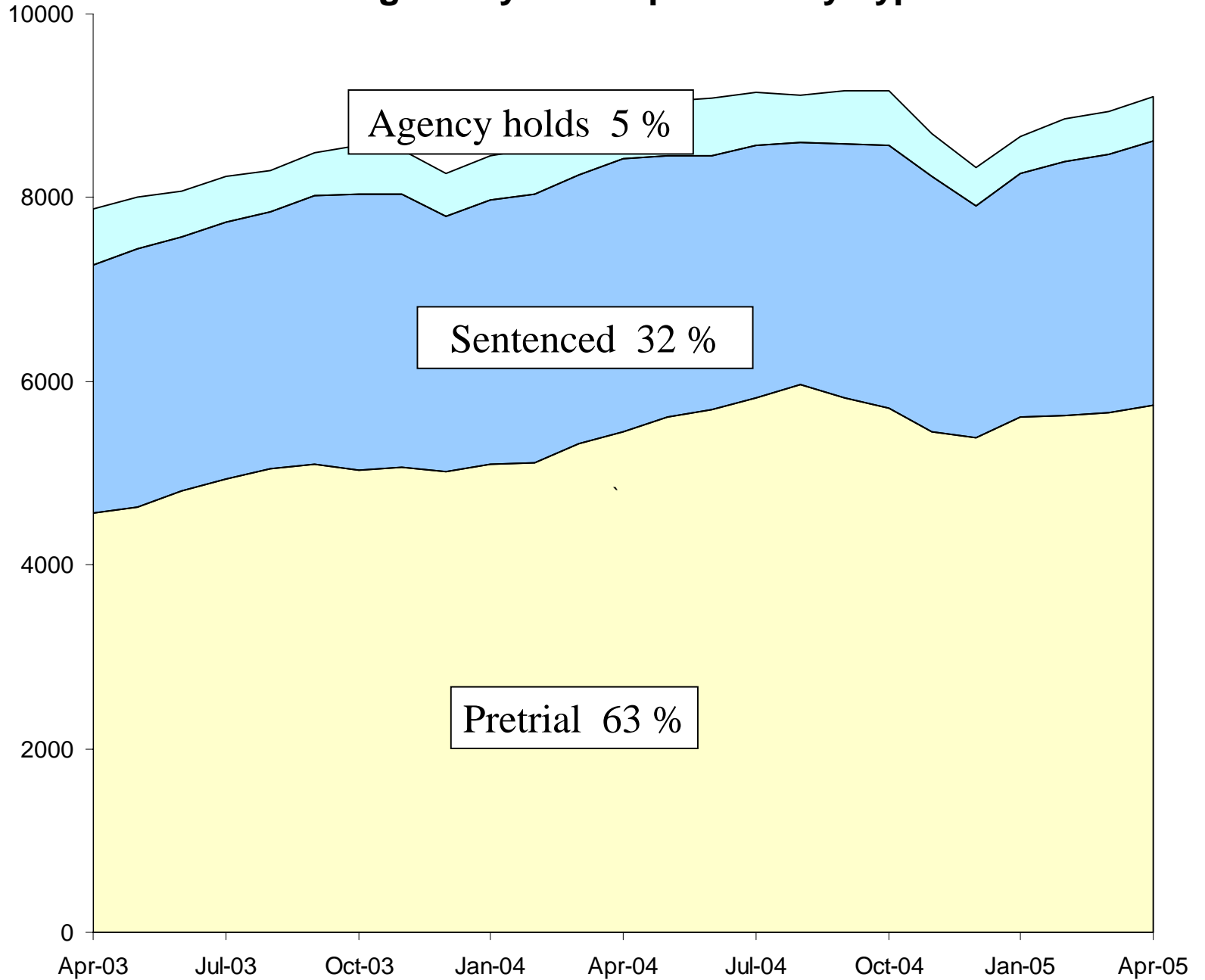
A criminal justice system-wide goal is to enhance the utility and timeliness of management information on case processing, in an effort to help agencies effectively address current events. An interagency committee of McJustice meets regularly to accomplish this and develop this report. Input from readers is welcomed. Please contact Amy Rex at rexa@mail.maricopa.gov or 602-506-1310.

*****For recipients outside the County e-mail system*****
This report is now available on-line. Please contact Amy Rex at rexa@mail.maricopa.gov if you are interested in receiving an on-line version instead of a hard copy. Thank you for helping to protect our resources!

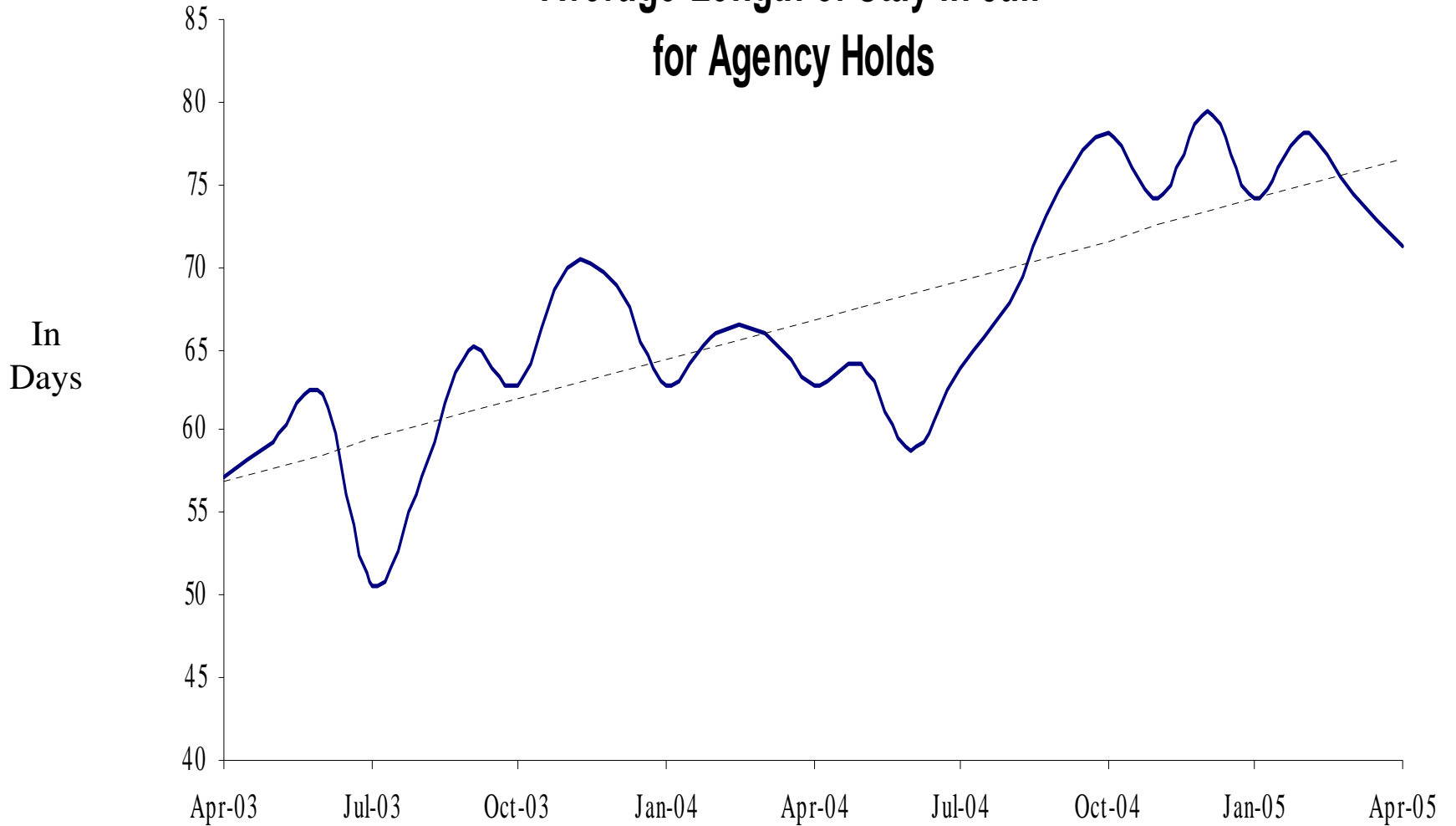
Average Daily Jail Population



Average Daily Jail Population by Type

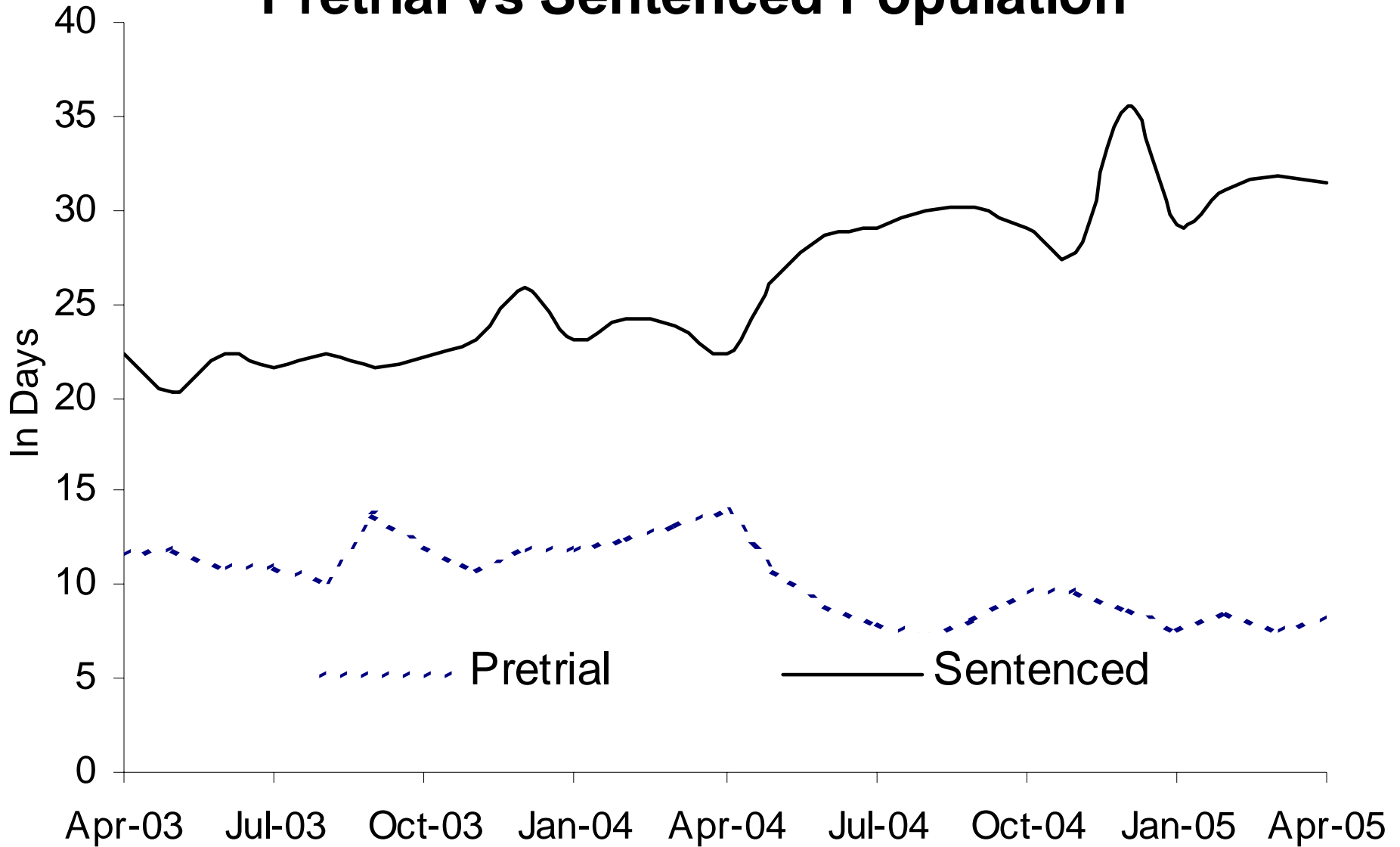


Average Length of Stay in Jail for Agency Holds

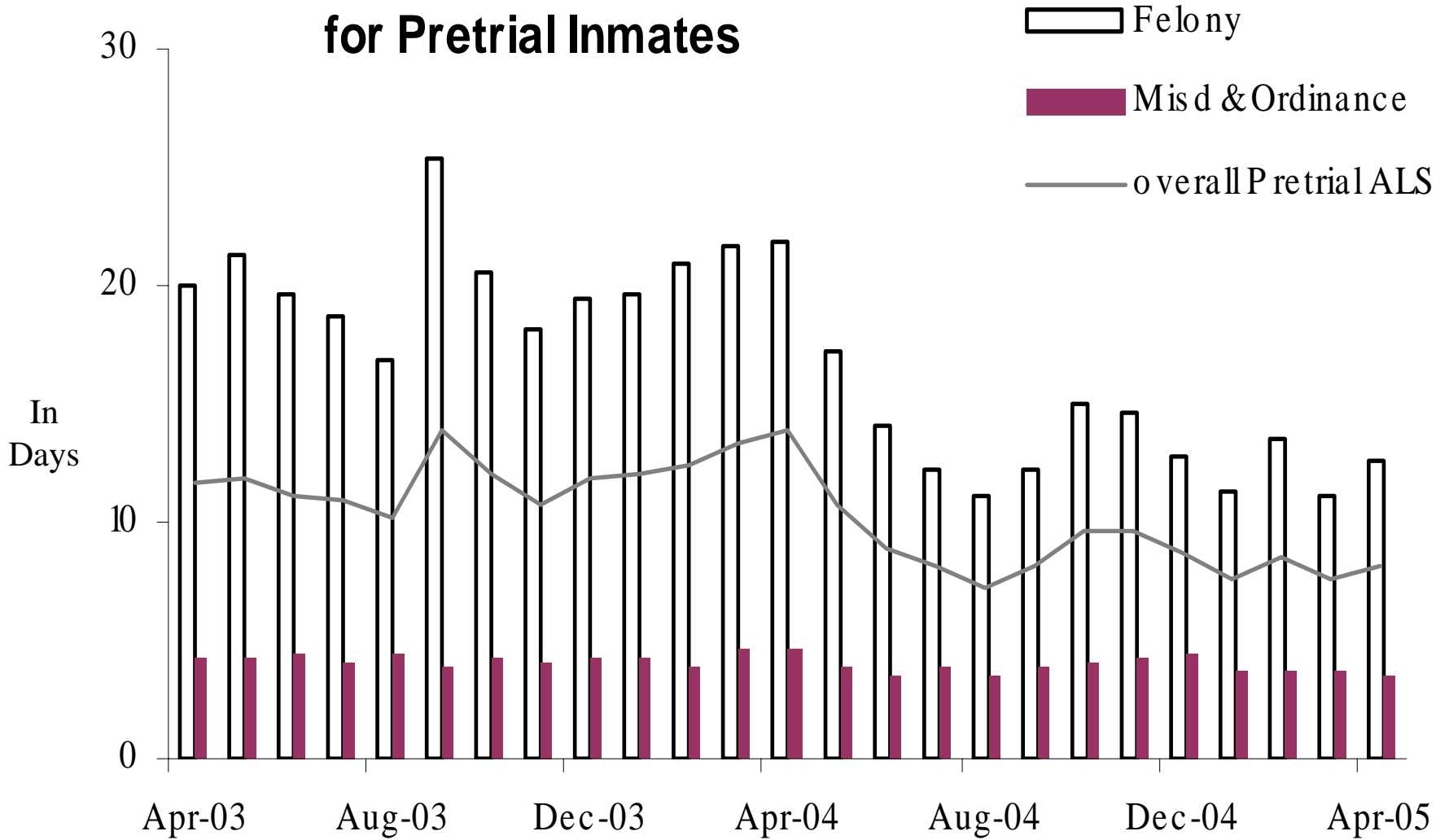


69% Dept of Corrections, 17% Federal agencies, 14% other

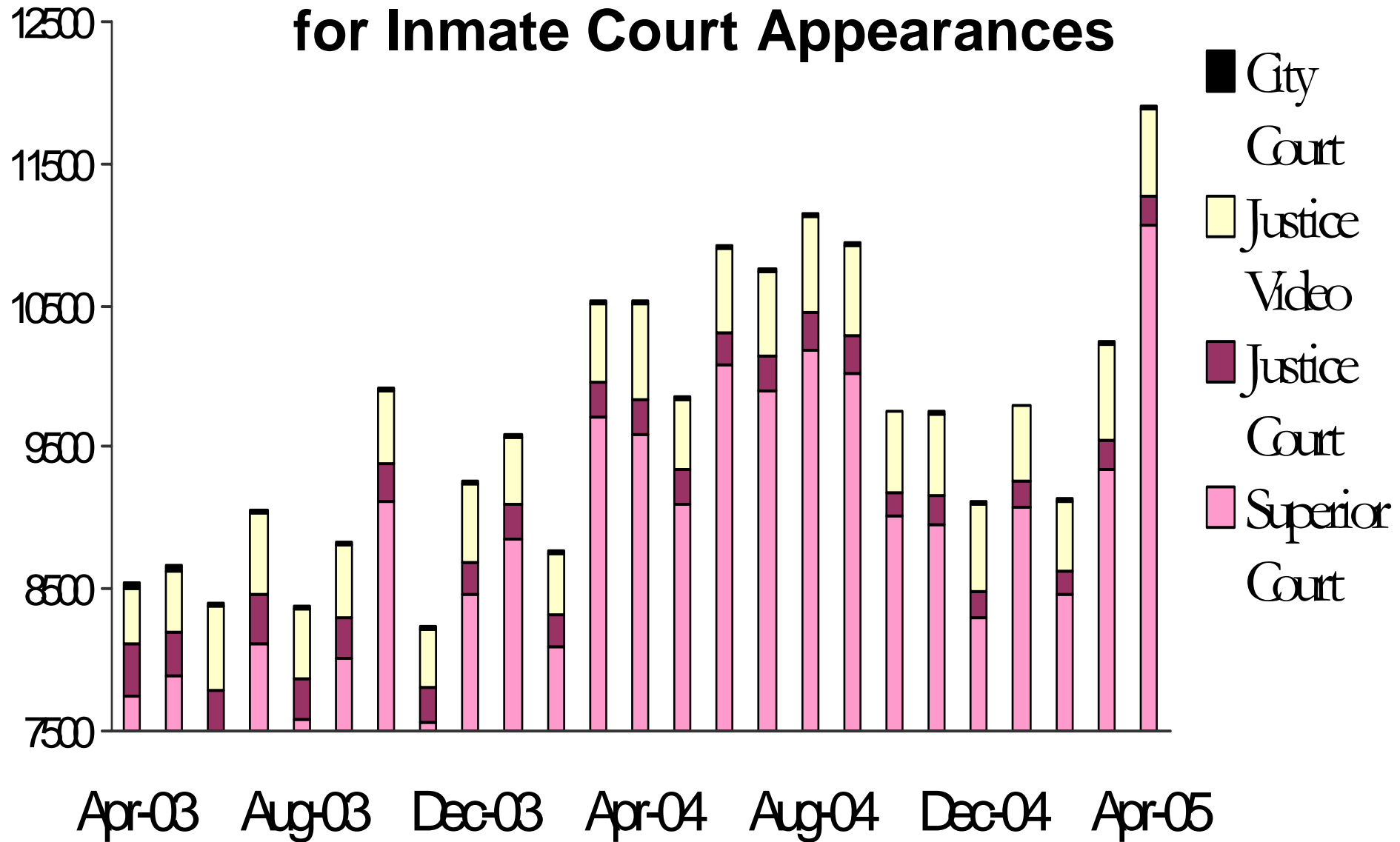
Average Length of Stay in Jail Pretrial vs Sentenced Population



Average Length of Stay in Jail for Pretrial Inmates



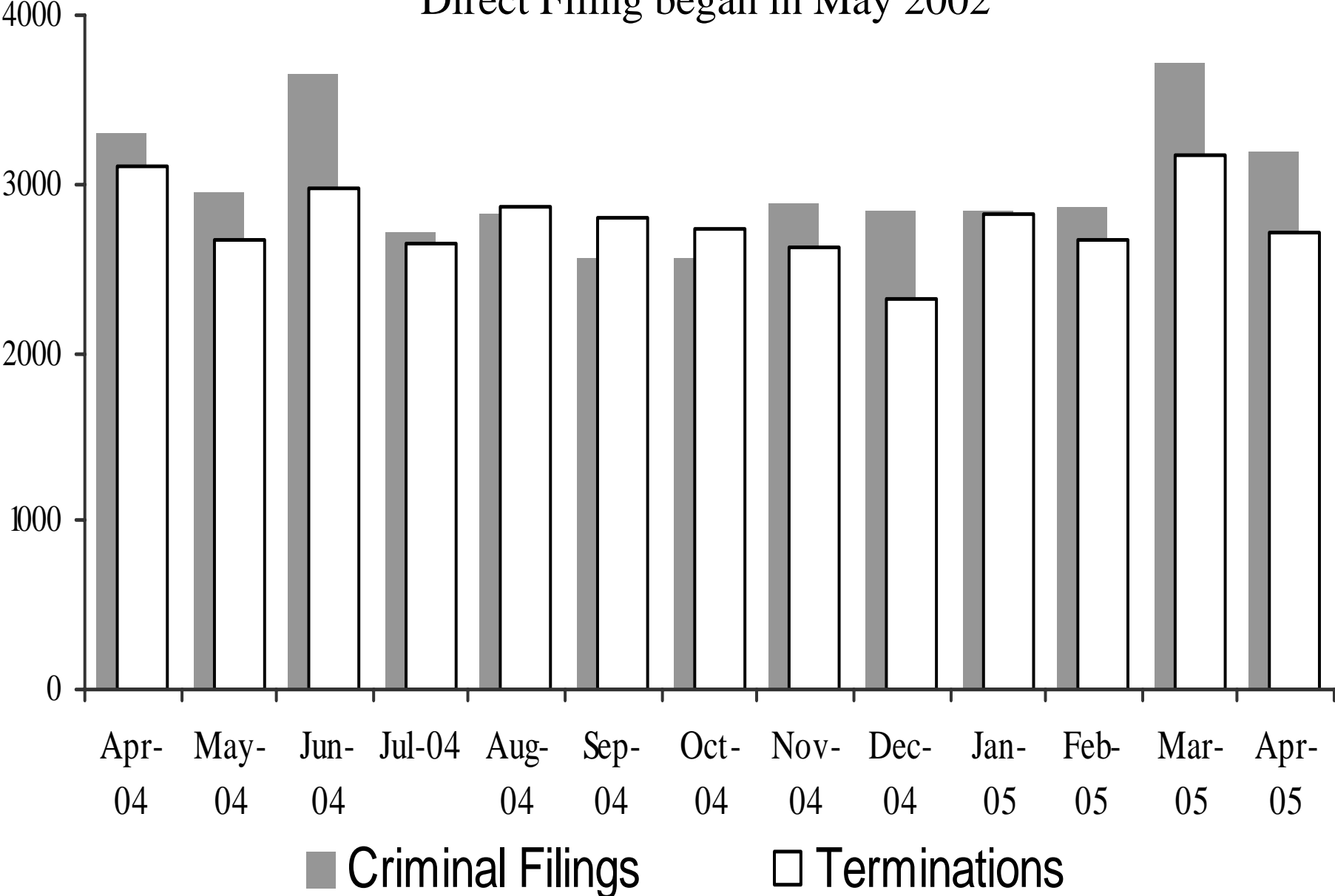
Sheriff's Office Transports for Inmate Court Appearances



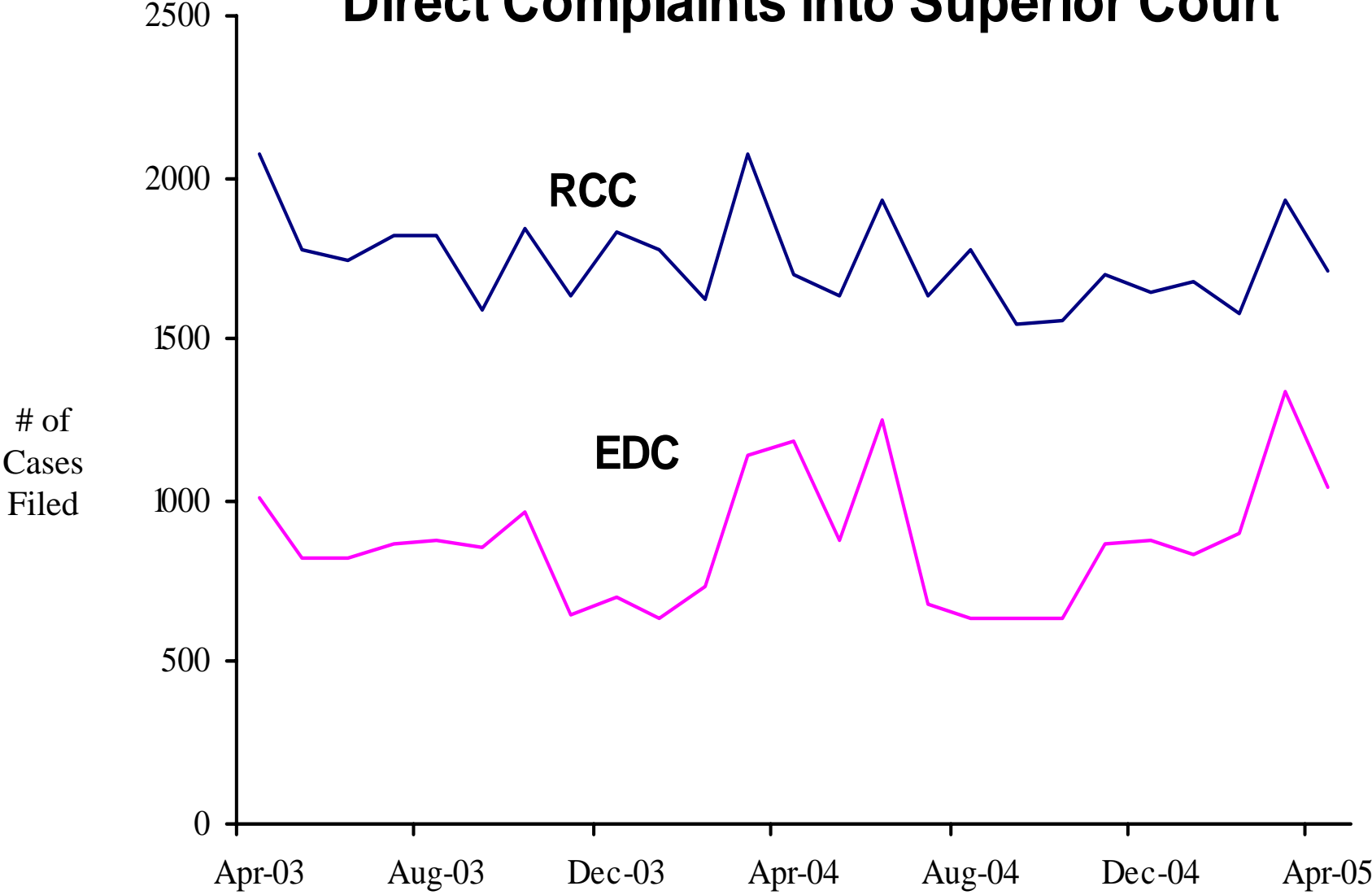
Since Direct Filing into Superior Court began May 2002, remaining transports to Justice Courts are for misdemeanor cases.

Superior Court Filings and Terminations

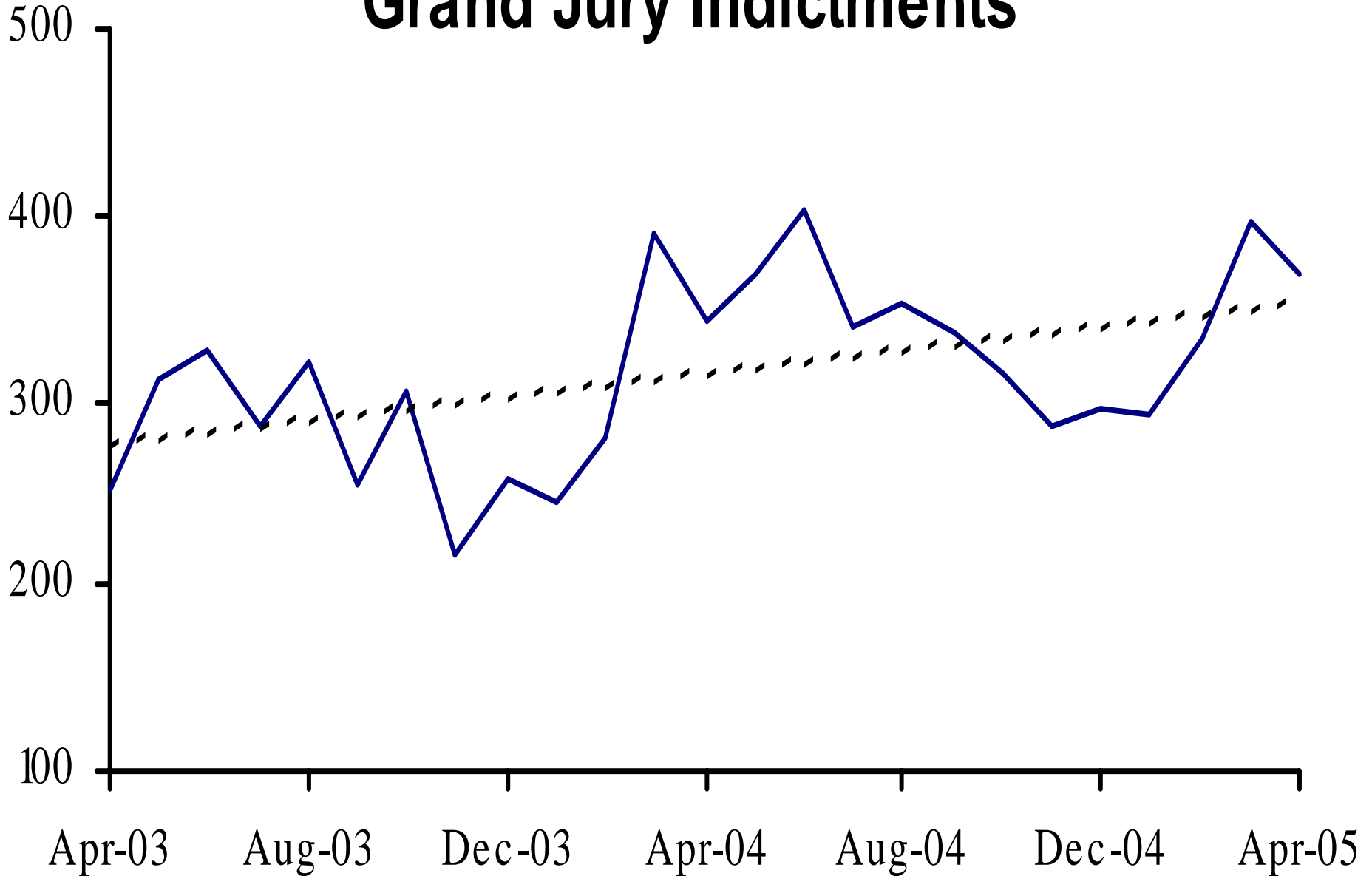
Direct Filing began in May 2002



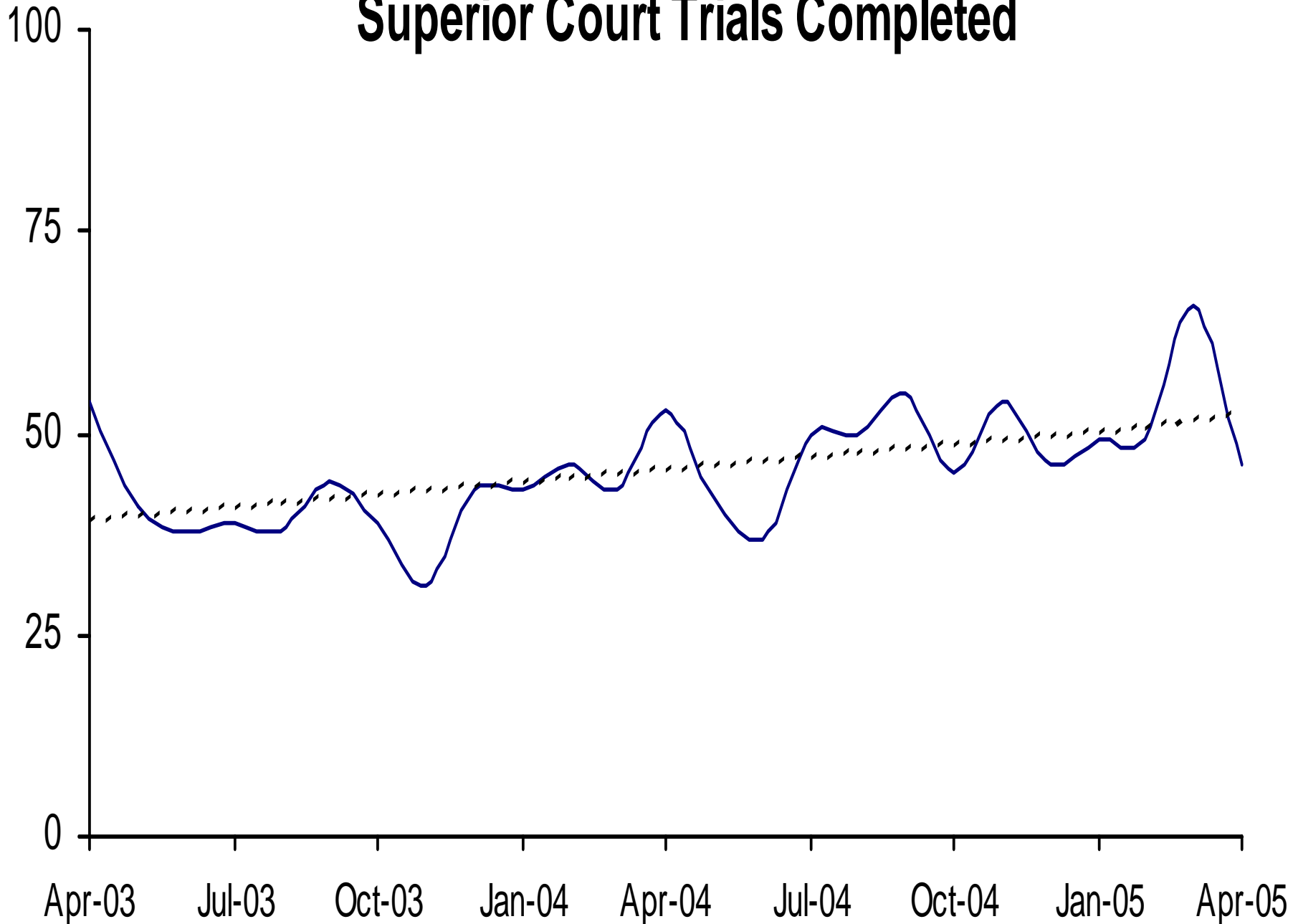
Direct Complaints into Superior Court



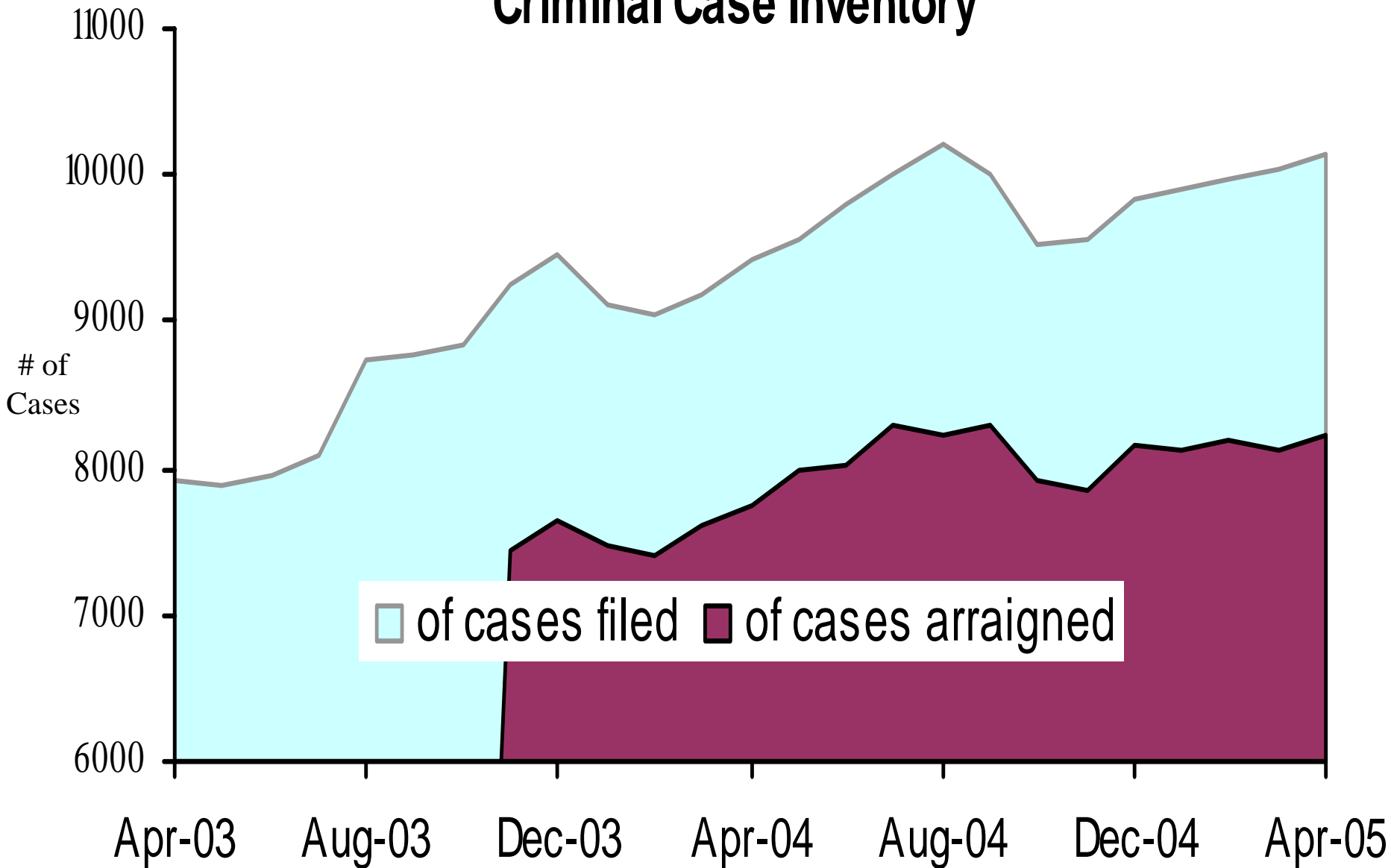
Grand Jury Indictments



Superior Court Trials Completed

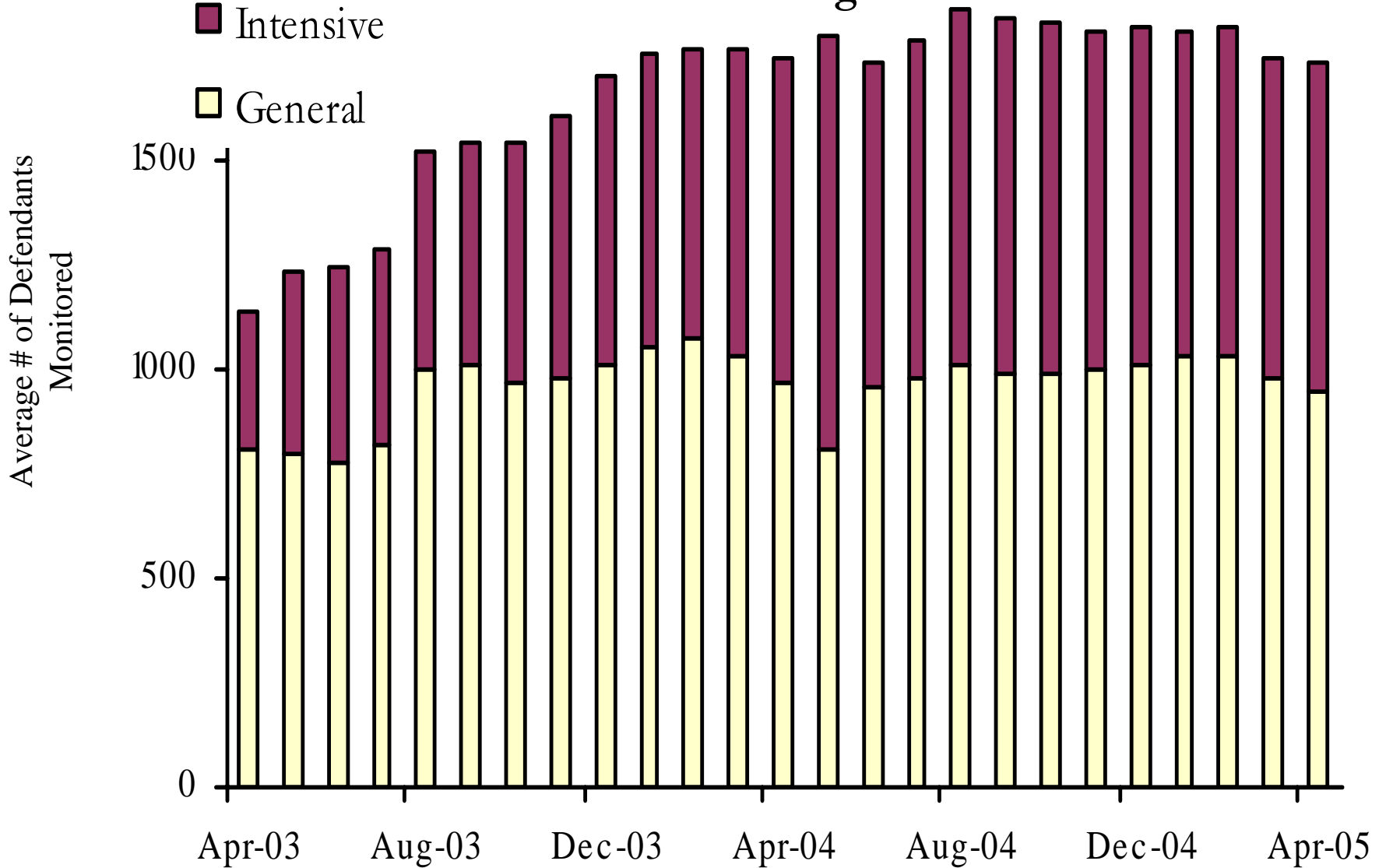


Active Pending Criminal Case Inventory



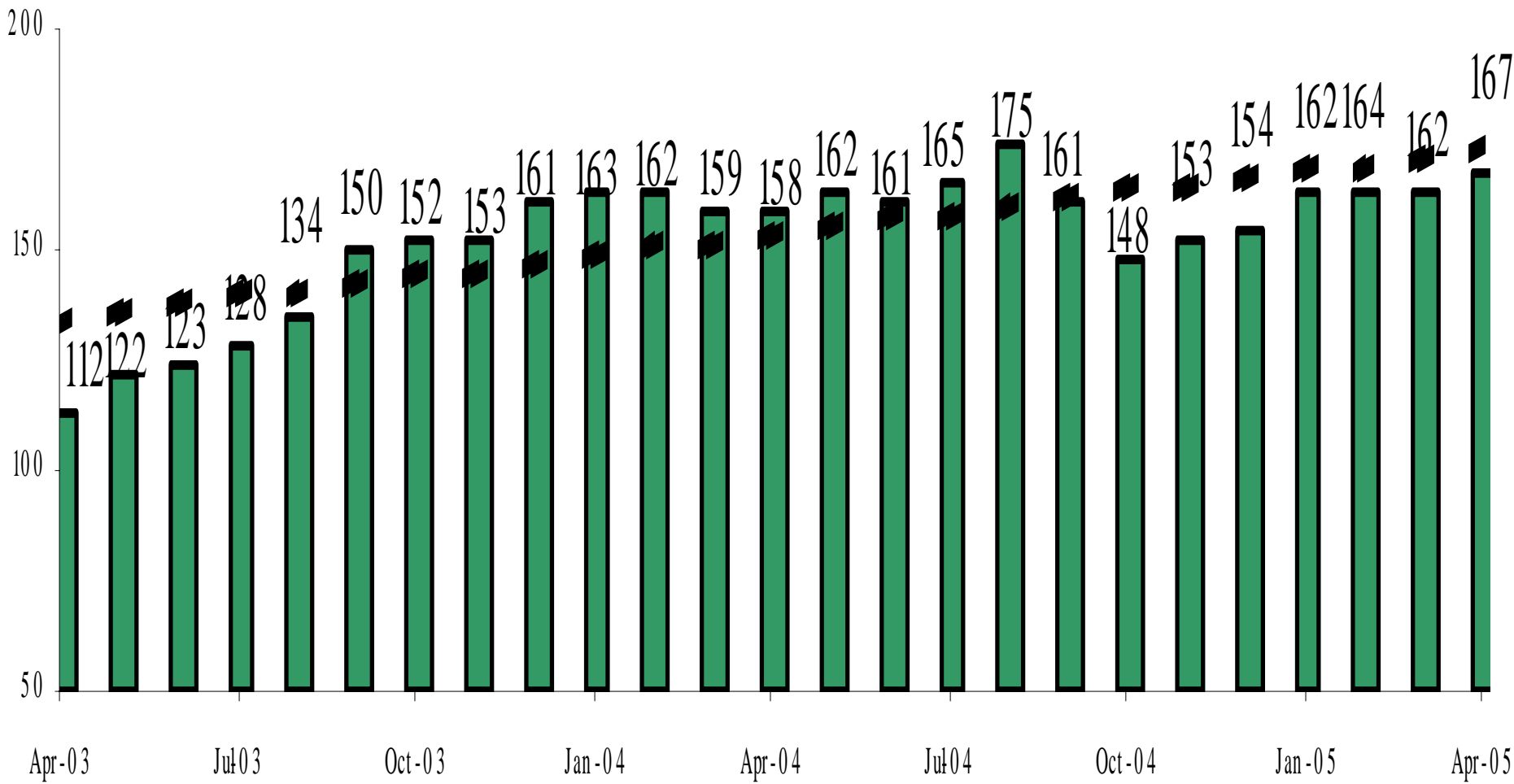
Pretrial Supervision

Defendant Monitoring Unit



Pretrial Supervision

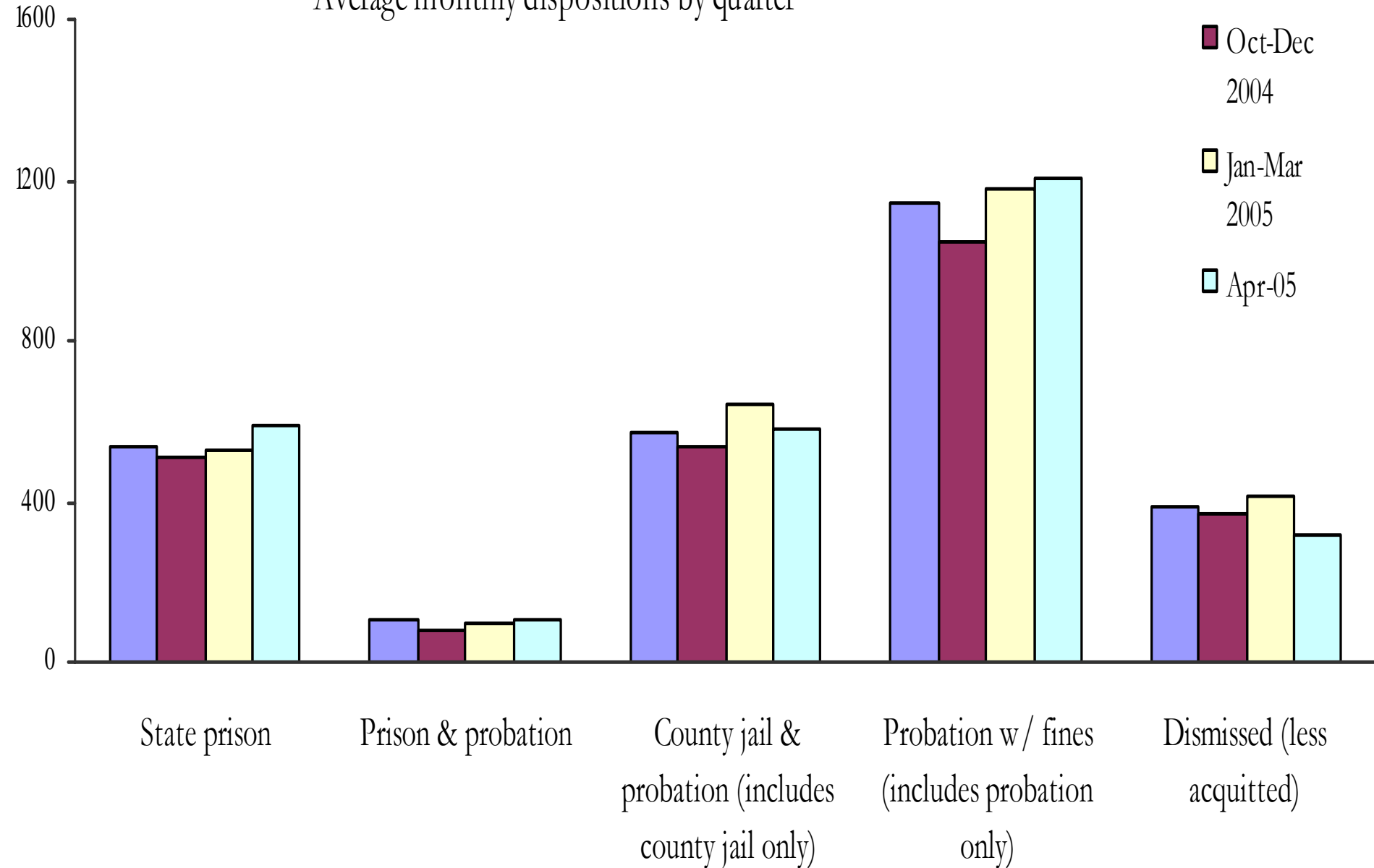
Defendants on Electronic Monitoring



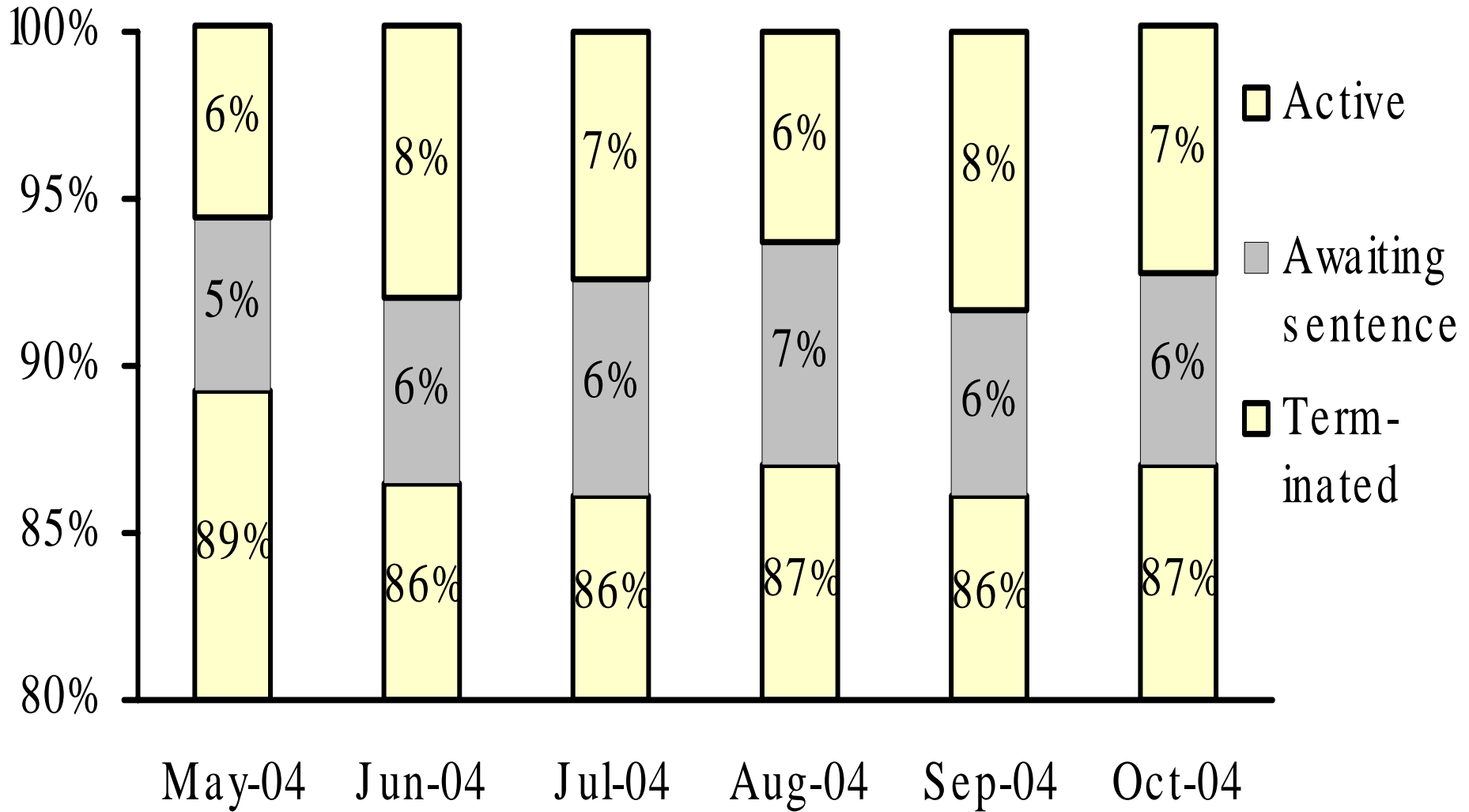
Disposition of Cases Terminated

Average monthly dispositions by quarter

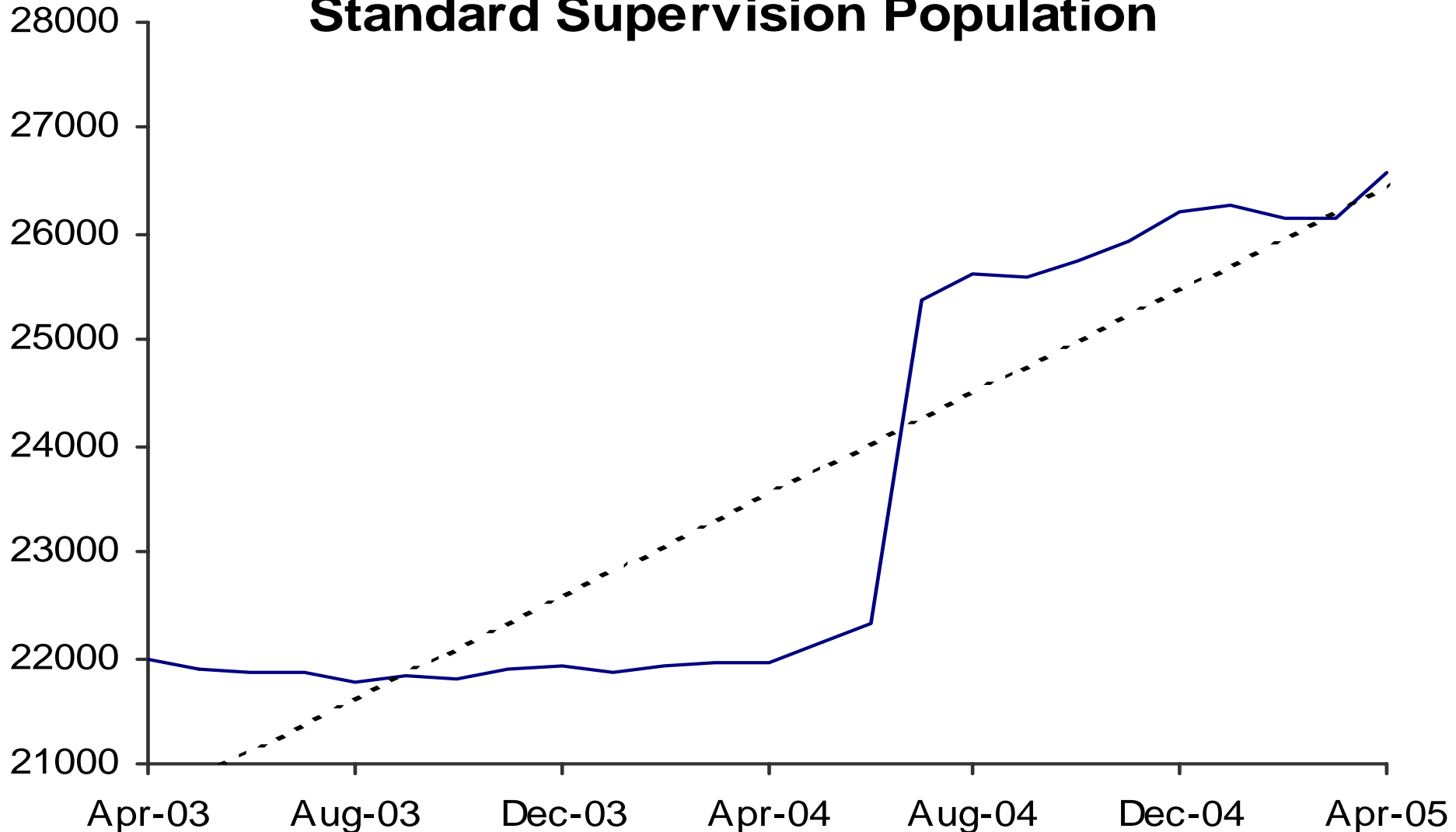
- Jul-Sep 2004
- Oct-Dec 2004
- Jan-Mar 2005
- Apr-05



Status of Cases After 180 Days

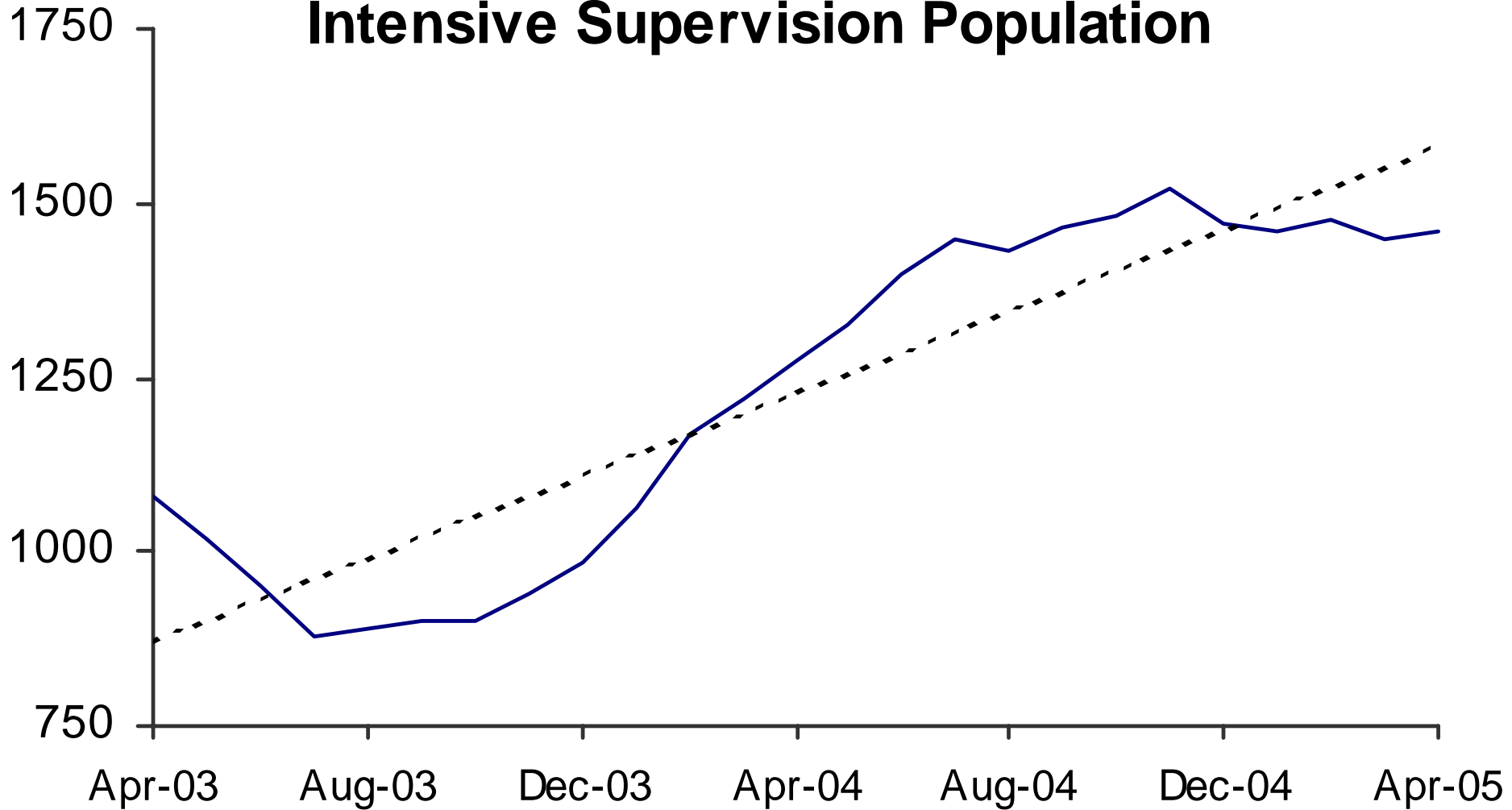


Adult Probation Standard Supervision Population

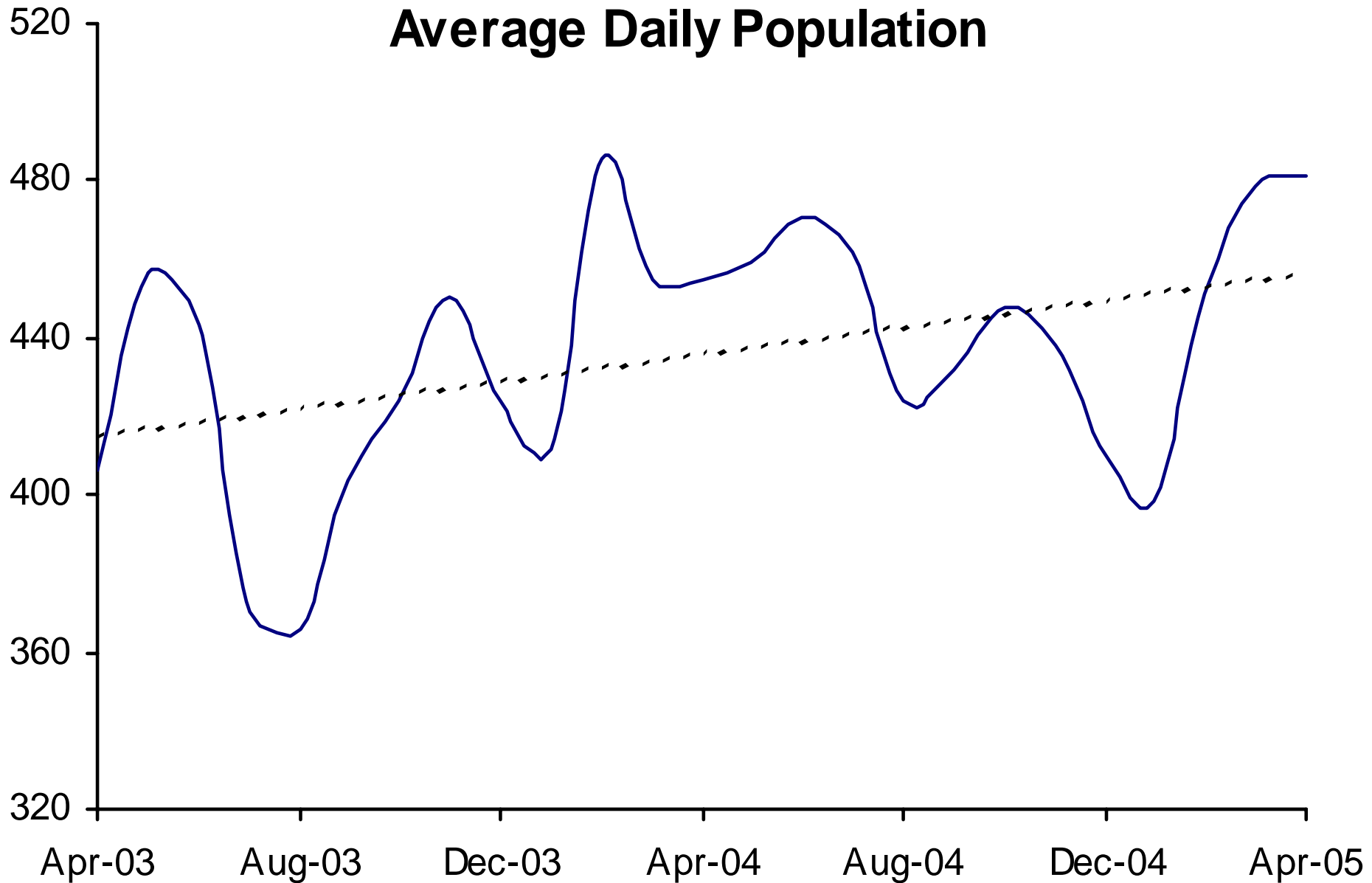


Interstate Compact and Report and Review caseloads are not included prior to July 2004. After July 2004, population as reported to the Board of Supervisors and JLBC is used.

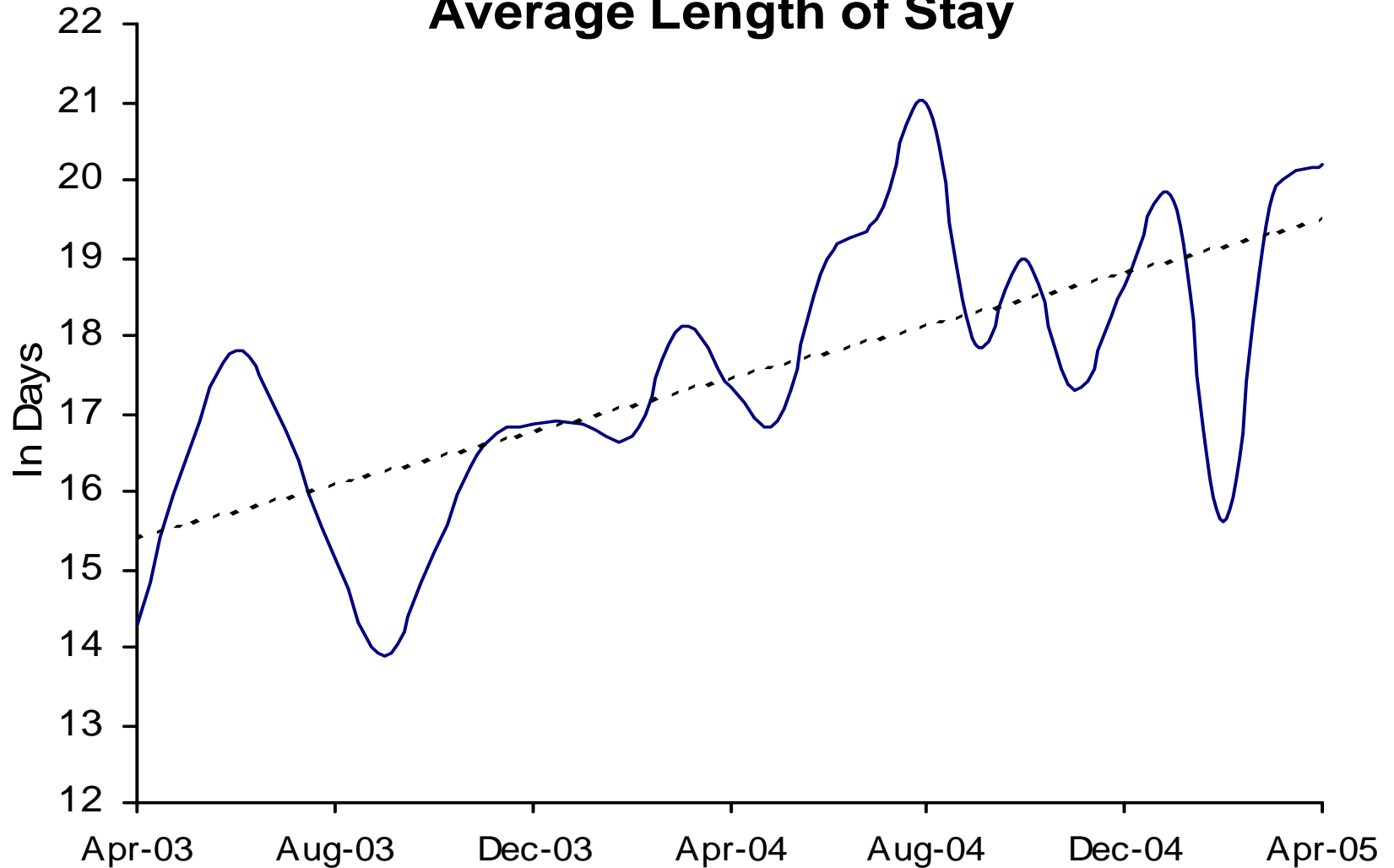
Adult Probation Intensive Supervision Population



Juvenile Detention Average Daily Population

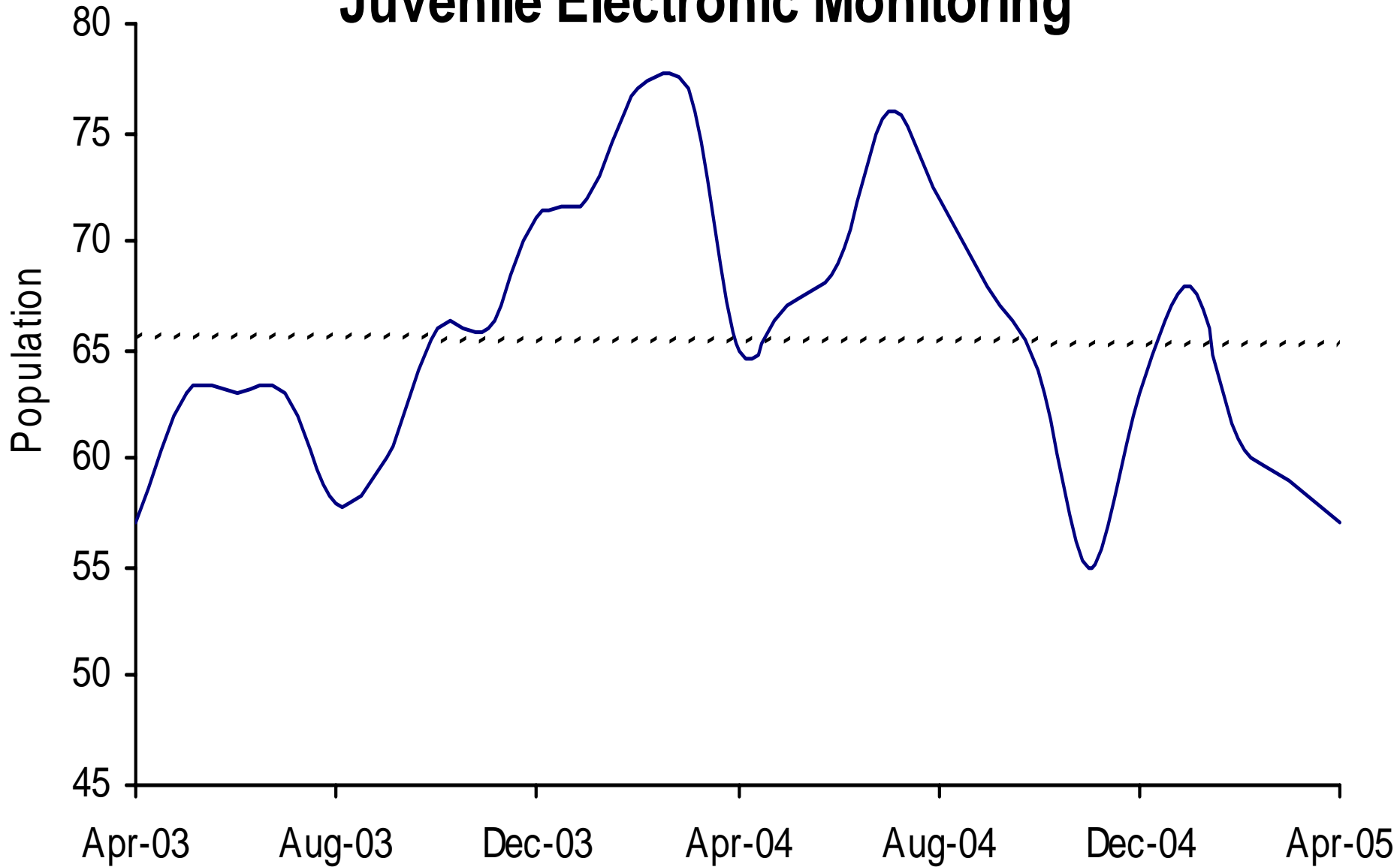


Juvenile Detention Average Length of Stay



The average length of stay for January - May 2003 was recalculated based upon an improved methodology.

Juvenile Electronic Monitoring



Juvenile Home Detention

