



Maricopa County
Criminal Justice System

Monthly Performance Report for April 2006

Monthly Averages						
	FY 2002	FY 2003	FY 2004	FY 2005	FY 2006	Apr. 2006
Sheriff's Office						
Bookings	9,641	9,875	10,176	9,975	10,365	10,614
Average Daily Population	7,557	8,044	8,657	9,054	9,793	9,584
Avg Length of Stay (in days)	23.8	24.4	26.0	27.7	28.8	27.1
Superior Court						
Filings	2,515	2,904	3,062	2,996	3,175	2,979
Terminations	2,367	2,330	2,612	2,758	2,918	3,016
Clearance Rate	94%	80%	85%	93.0%	92.2%	101.2%
Active Pending Inventory	7,419	8,123	9,106	10,002	10,892	10,565
Trials Completed	61	59	42	51	67	77
Trial Rate	2.4%	2%	1.4%	1.7%	2.1%	2.6%
Adult Probation						
Pretrial General Supervision	609	700	990	978	774	690
Pretrial Intensive Supervision	356	331	657	816	1,078	1,091
Pretrial Electronic Monitoring	78	97	153	164	187	210
Standard Probation Supervision	24,448	25,400	25,055	26,091	27,658	28,661
Intensive Probation Supervision	1,564	1,267	1,079	1,456	1,324	1,270
Juvenile Detention and Probation						
Avg Daily Detention Pop	407	401	431	443	430	472
Avg Length of Stay (in days)	14.7	15.1	16.6	18.7	18.0	17.7
Standard Prob.	4,726	4,387	4,232	4,108	4,026	4,061
Intensive Prob.	666	659	518	547	528	503

Criminal Justice System News

Adult Incarceration: Bookings decreased in April, from 10,711 to 10,614. ADP increased from 9,571 to 9,584. In the past five months, ADP has remained fairly constant with a high of 9,692 and a low of 9,537. Pretrial and agency hold populations increased; pretrial from 6,082 to 6,148 and holds from 522 to 525. The sentenced population decreased from 2,906 to 2,853. Overall ALOS was nearly the same, 27.7 days in March and 27.1 days in April. ALOS has been fairly constant since January, with a high of 27.8 days and a low of 27.1 days.

Agency hold ALOS decreased, from 80.4 to 75.8 days. ALOS for pretrial and sentenced populations increased slightly, pretrial from 7.2 to 7.9 days and sentenced from 33.3 to 33.6 days. For the pretrial population, felony ALOS increased from 10.6 to 12.4 days, while misdemeanor ALOS remained 3.2 days (the same since February 2006).

Filings & Case Processing: Criminal filings and terminations decreased in April, filings from 3,682 to 2,979 and terminations from 3,358 to 3,016. The termination rate was 101.2%. The active pending case inventory decreased from 10,612 to 10,565. This is the lowest rate since May 2005 (10,229). Filings into the RCC and EDC decreased. RCC numbers fell from 2,019 to 1,769, while EDC numbers fell from 1,181 to 809. Grand Jury indictments (not including notices of supervening indictments, non-EDC direct complaints, and juvenile direct complaints) decreased from 438 to 351.

Adult Probation: Levels of pretrial general and intensive supervision decreased: general from 755 to 690 (the lowest since February 2003 – 660), intensive from 1,174 to 1,091. Levels of electronic monitoring increased slightly from 209 to 210.

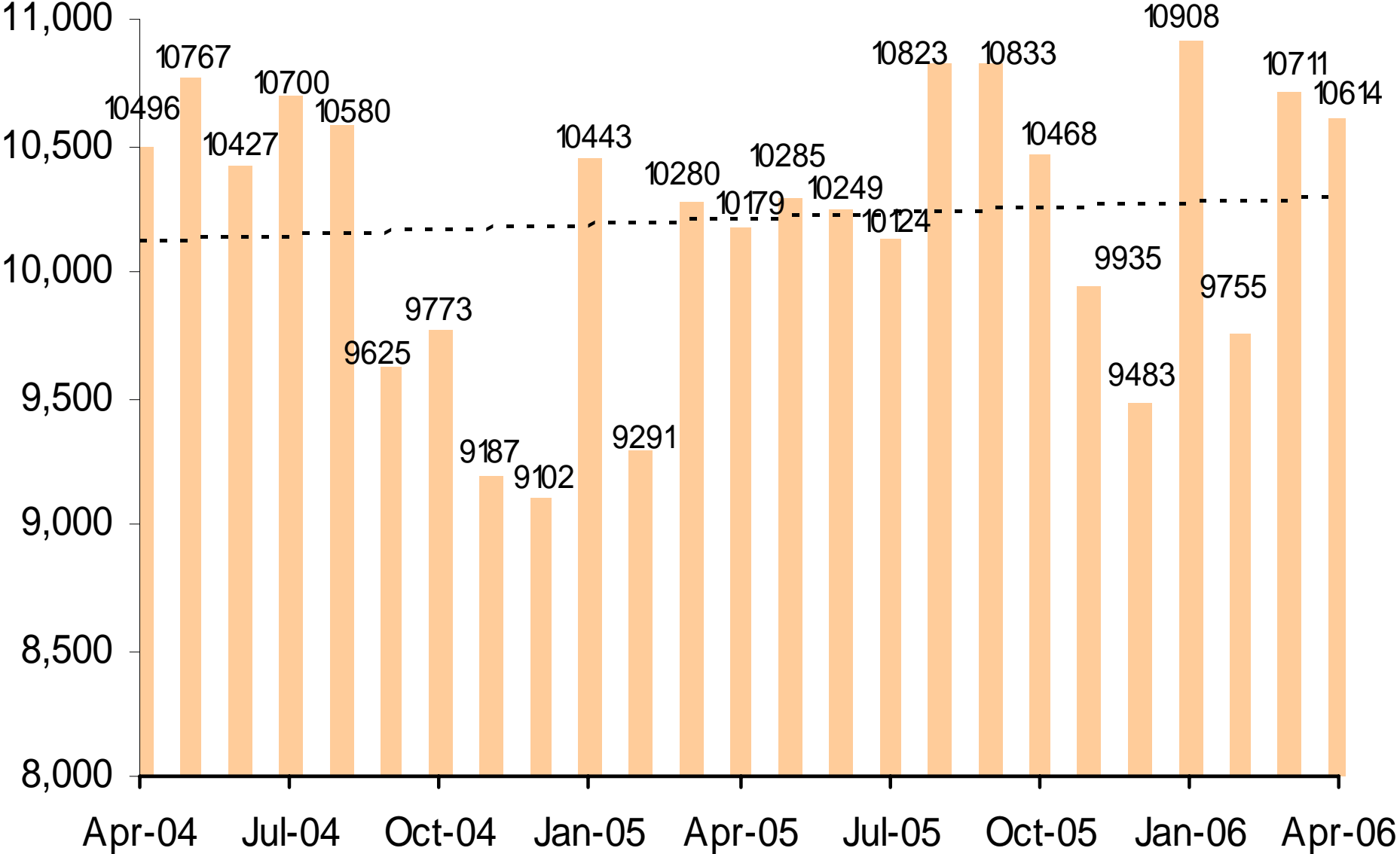
Levels of standard probation supervision increased from March (28,557) to April (28,661); this continues to be the highest number ever seen. Levels of intensive probation supervision decreased slightly from 1,282 to 1,270 (lowest since March 2004 – 1,217). (Monthly averages for FY04 were updated based on information provided by Adult Probation).

Juvenile Detention and Probation: The Average Daily Population increased from 470 in March to 472 in April; this is the highest since April 2005 (481). ALOS decreased from 19.0 days to 17.7 days. Electronic monitoring decreased from 98 to 88. Home detention increased from 260 to 268 (the highest since May 2000 – 273).

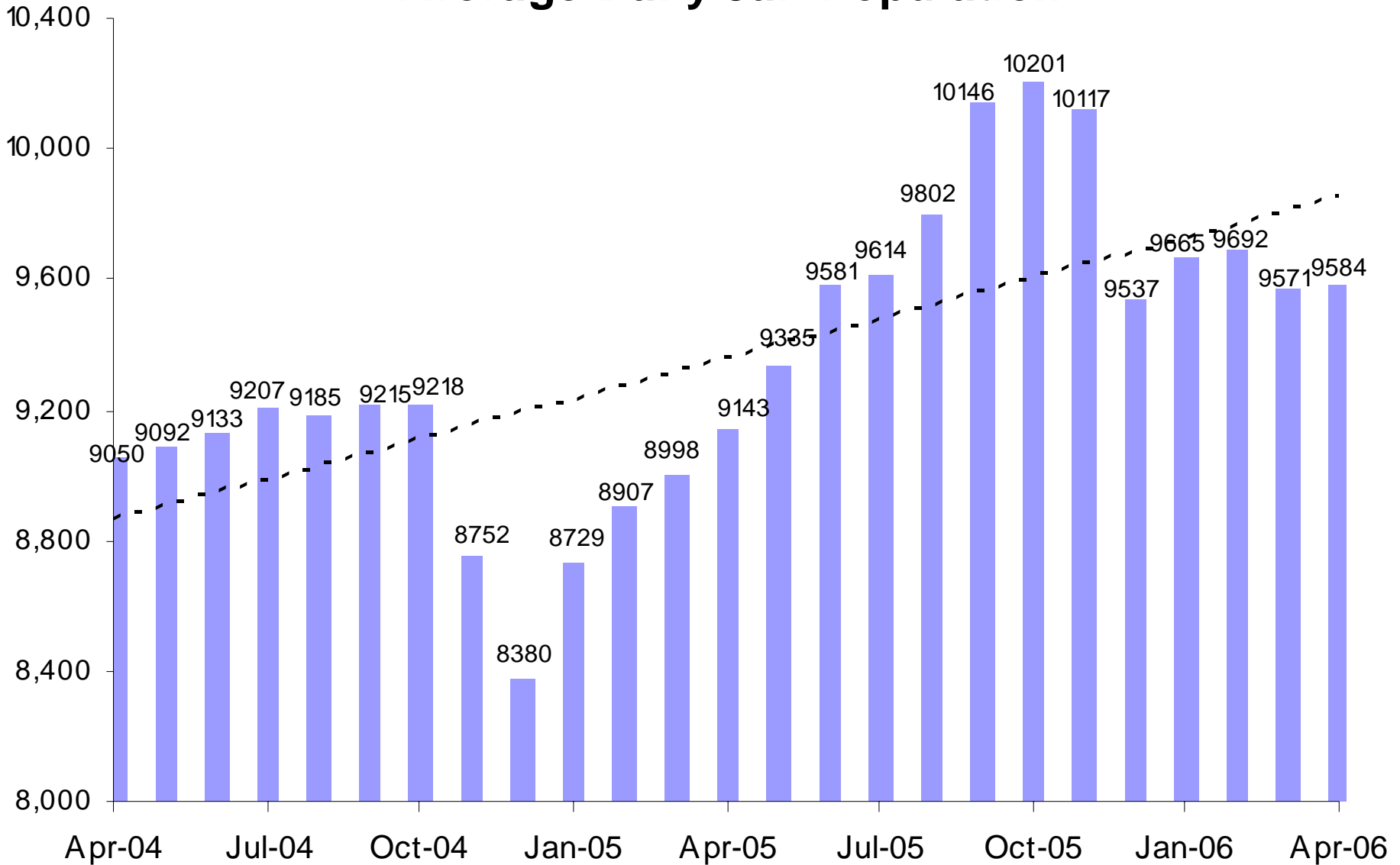
Levels of juvenile standard and intensive probation increased slightly. Standard went from 4,010 to 4,061, while intensive went from 499 to 503.

A criminal justice system-wide goal is to enhance the utility and timeliness of management information on case processing, in an effort to help agencies effectively address current events. An interagency committee of McJustice meets regularly to accomplish this and develop this report. Input from readers is welcomed. Please contact Amy Rex at rexa@mail.maricopa.gov or 602-506-1310.

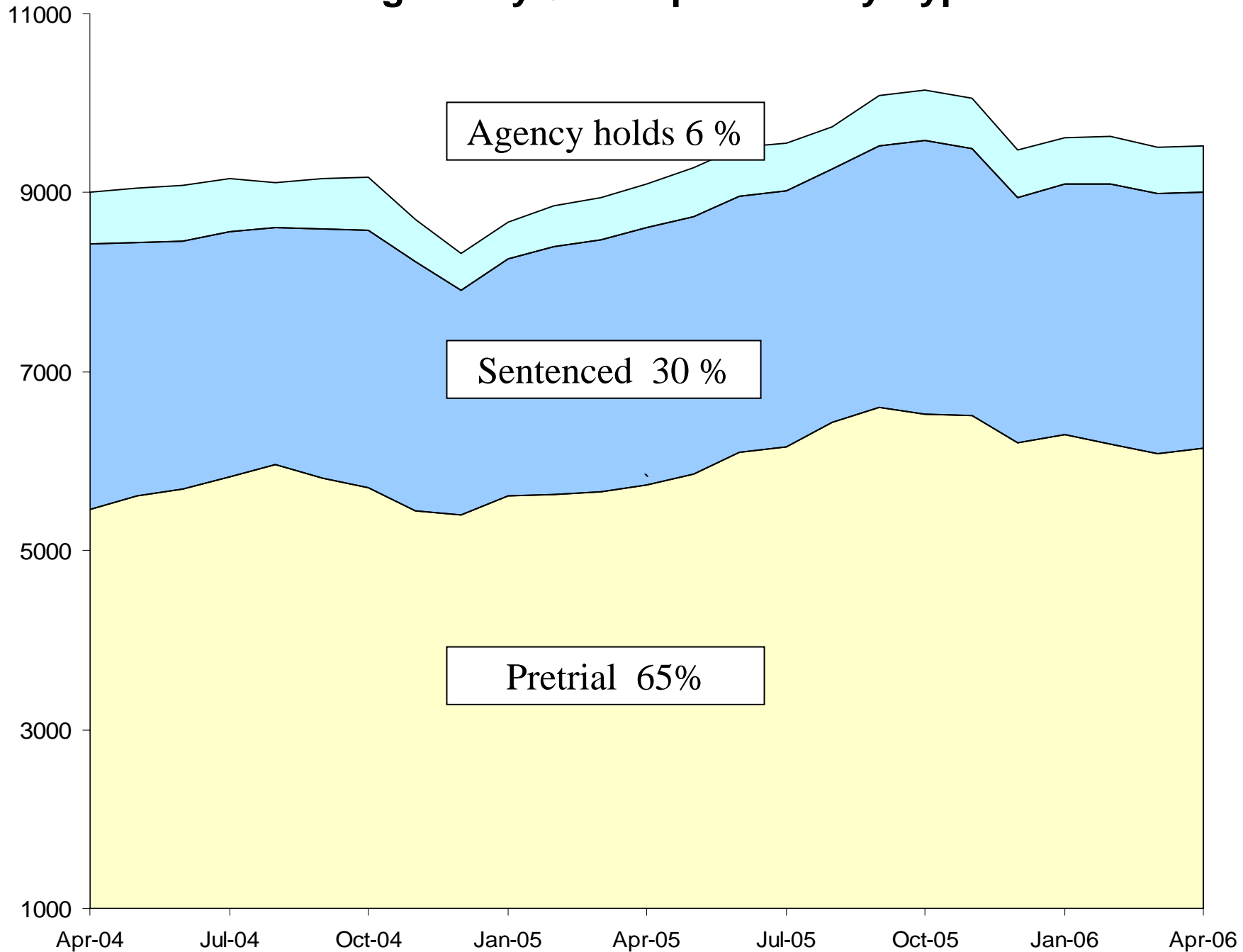
Jail Bookings



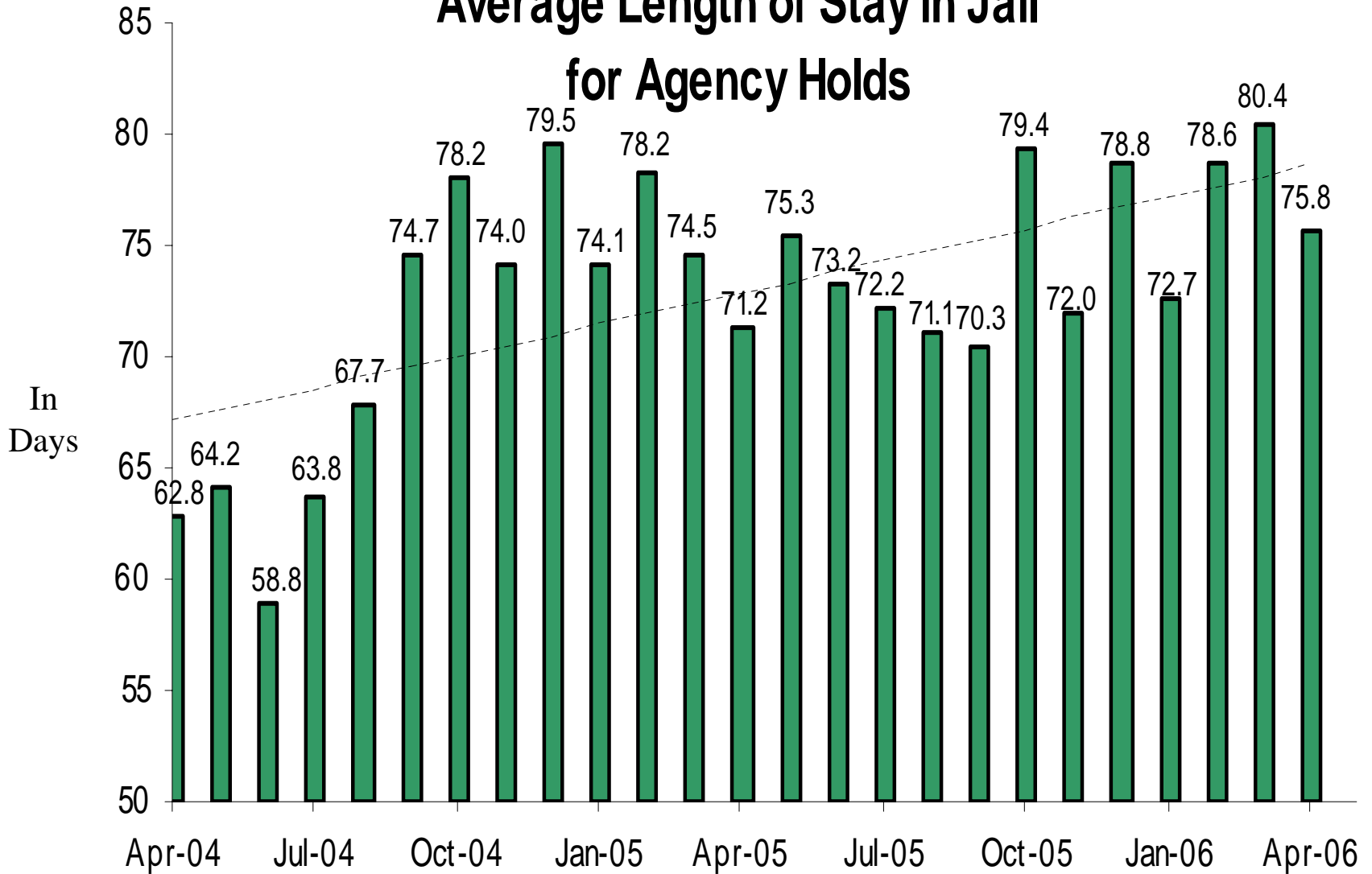
Average Daily Jail Population



Average Daily Jail Population by Type

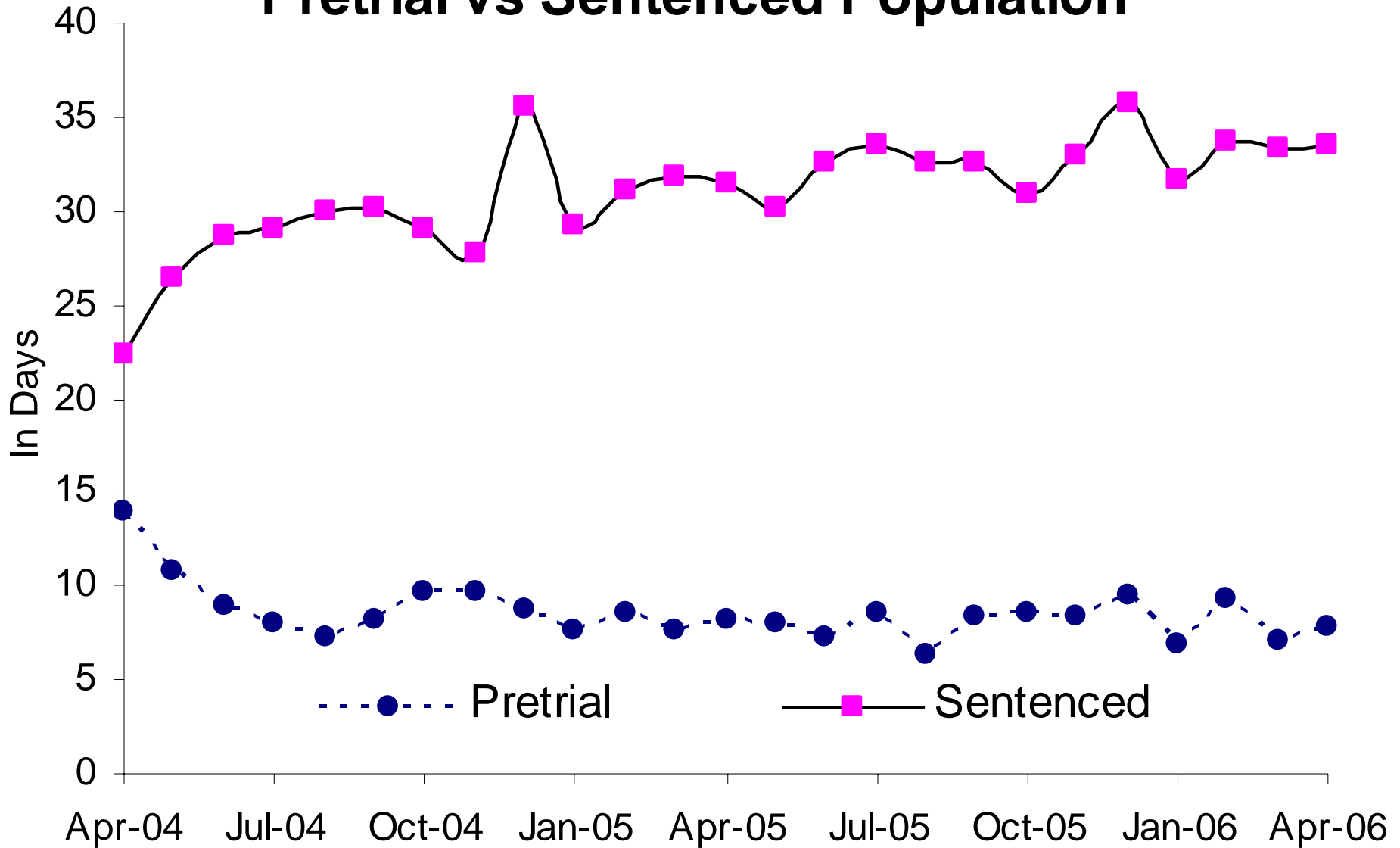


Average Length of Stay in Jail for Agency Holds

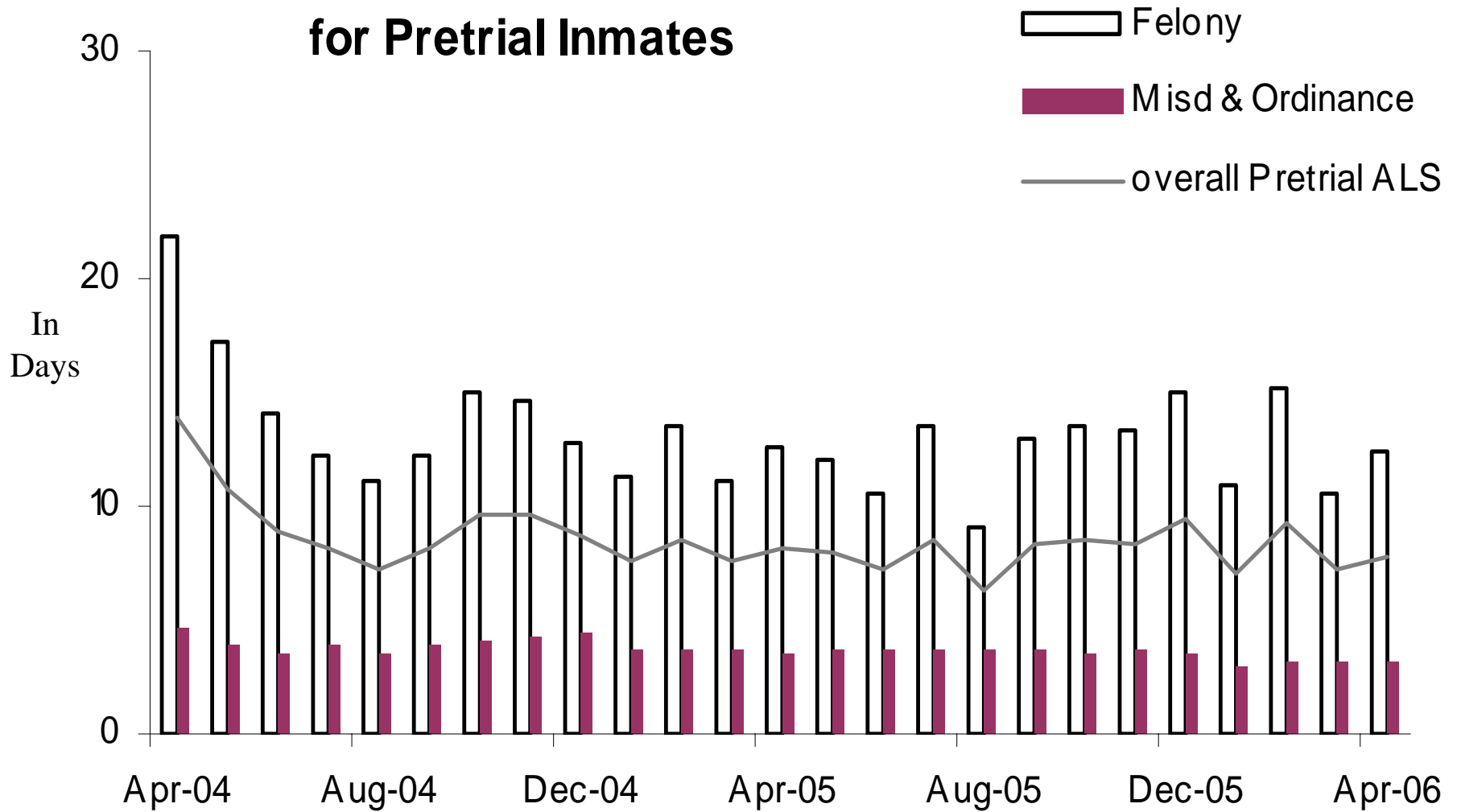


75% Dept of Corrections, 14% Federal agencies, 11% other

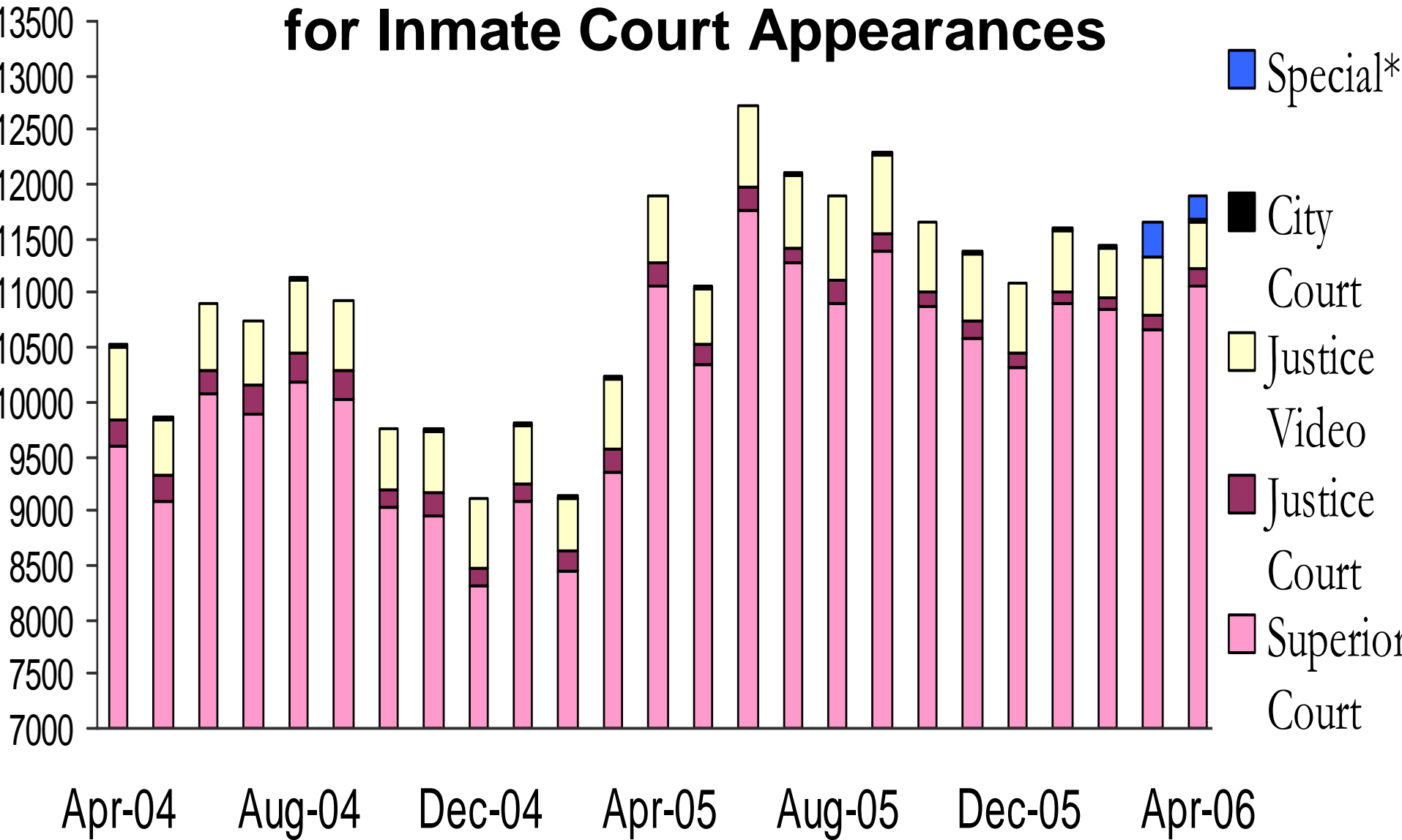
Average Length of Stay in Jail Pretrial vs Sentenced Population



Average Length of Stay in Jail for Pretrial Inmates



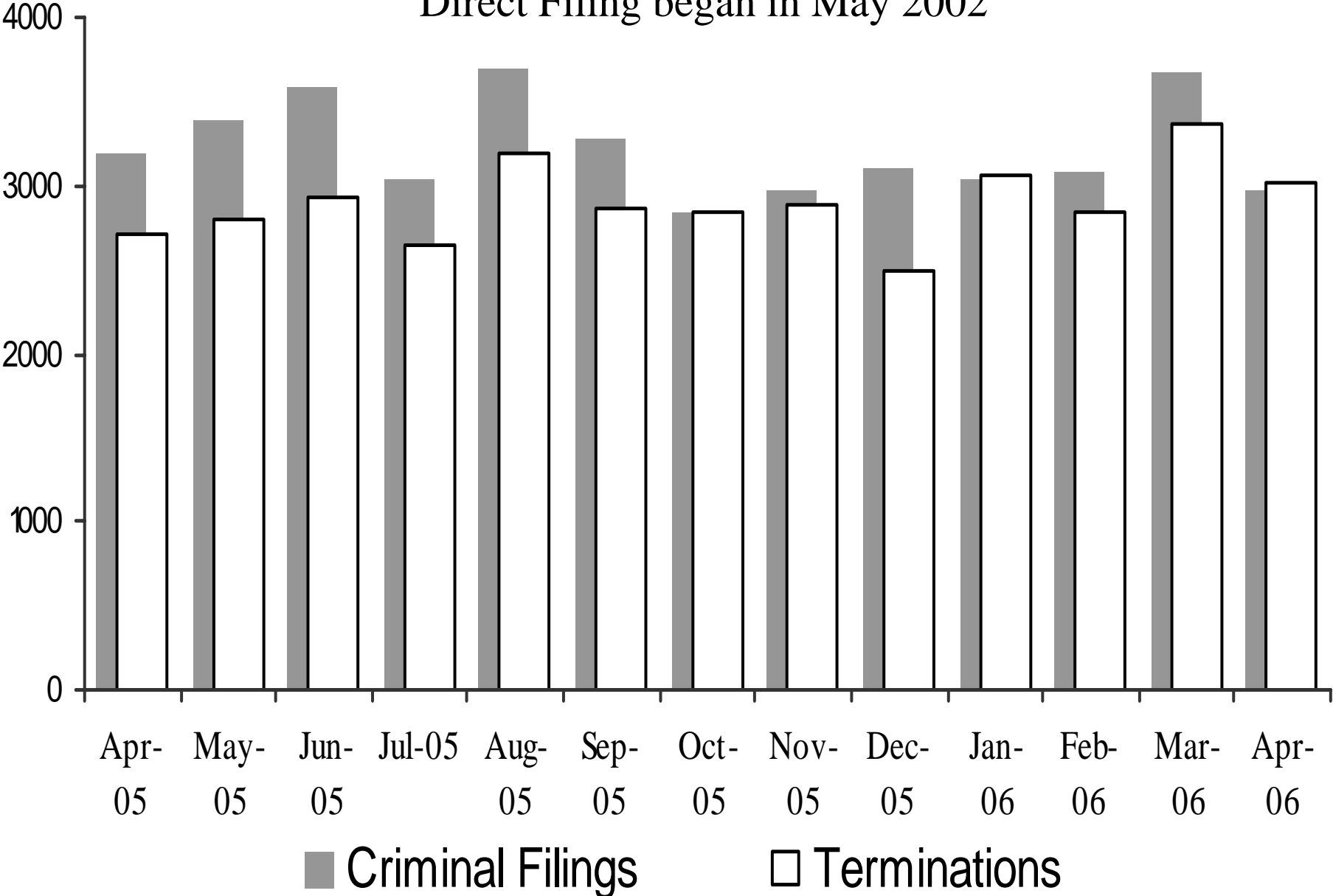
Sheriff's Office Transports for Inmate Court Appearances



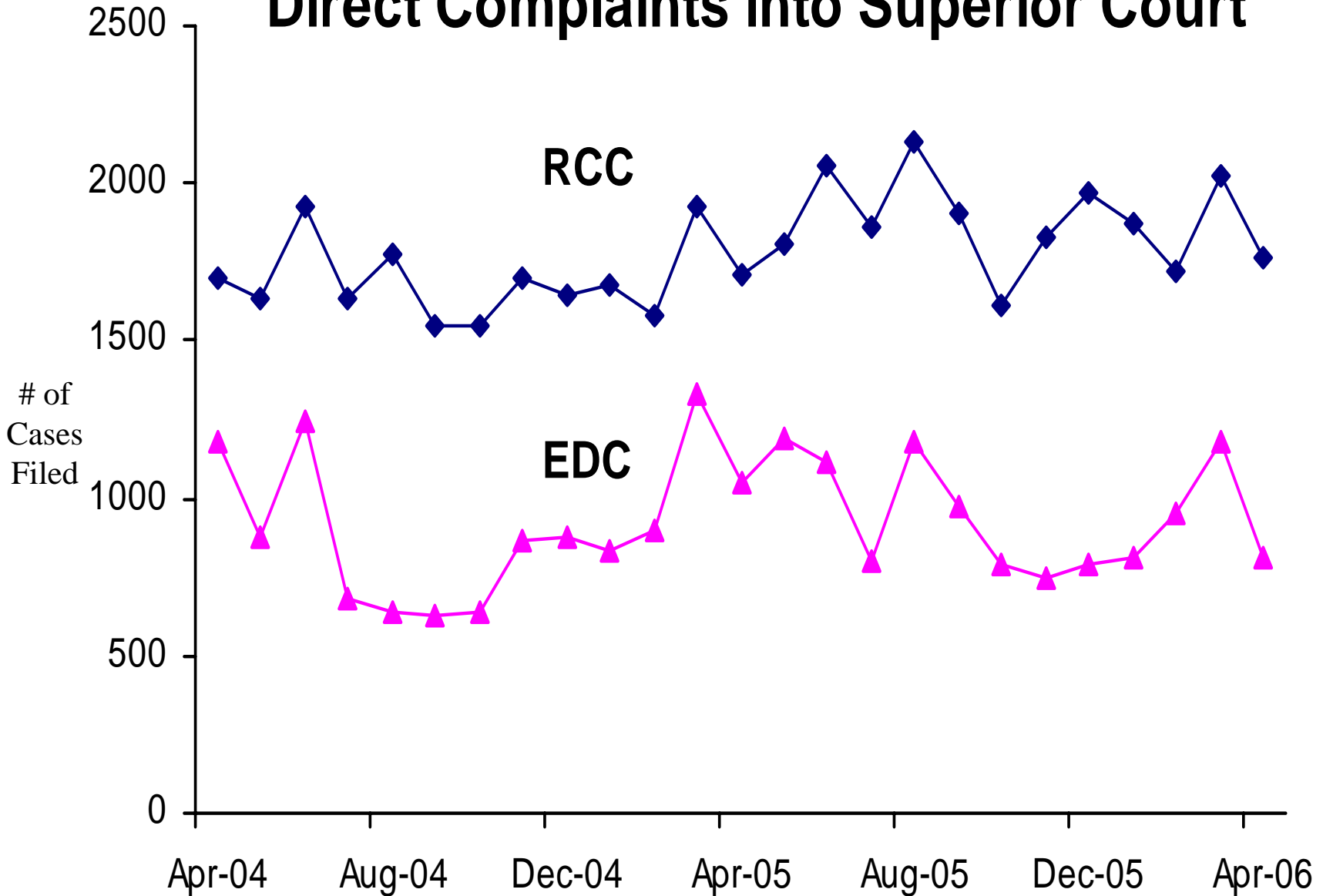
“Special” cases added in March 2006 include Downtown Remands, SEJD Remands, and SEJD Unscheduled.

Superior Court Filings and Terminations

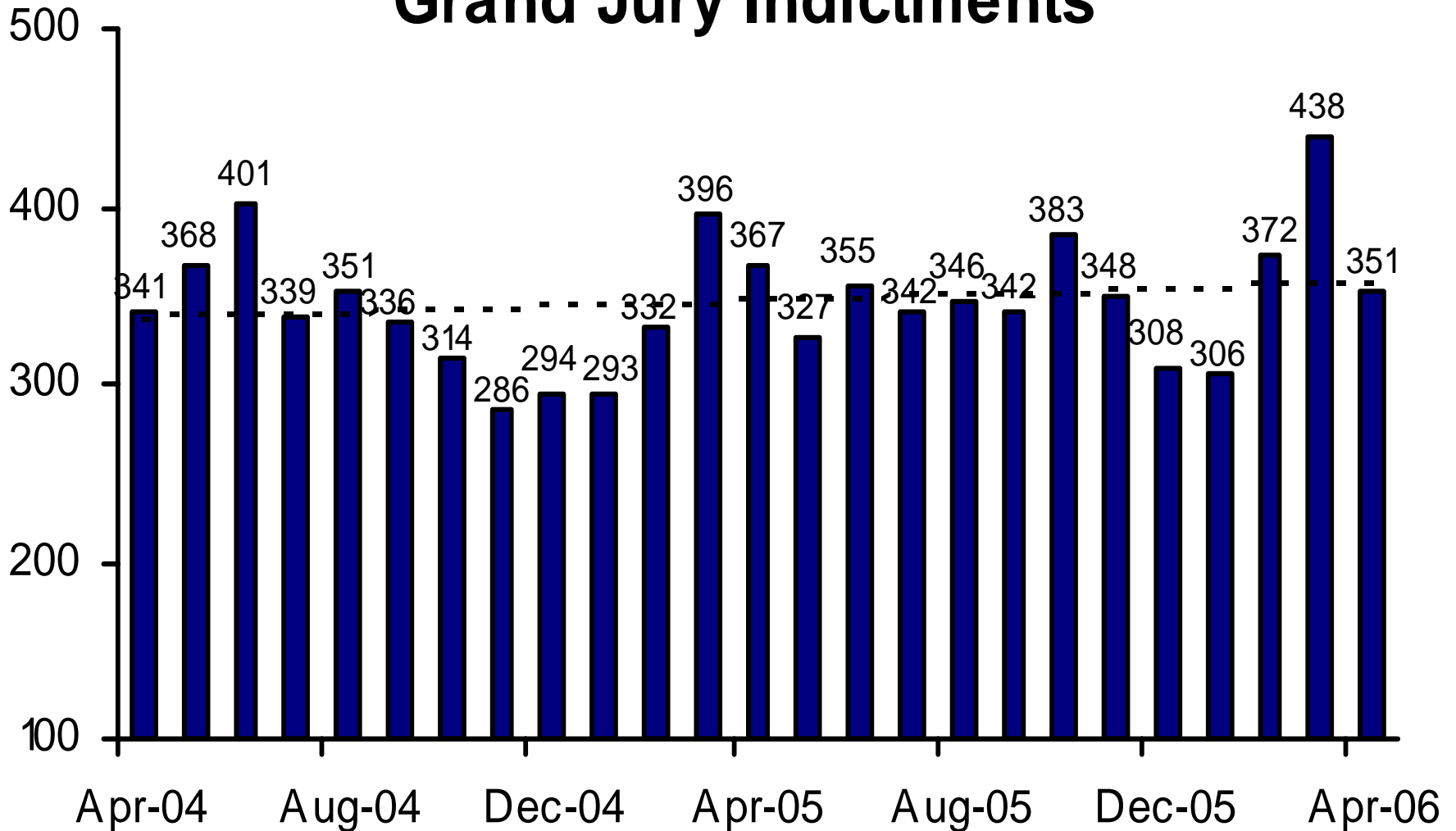
Direct Filing began in May 2002



Direct Complaints into Superior Court

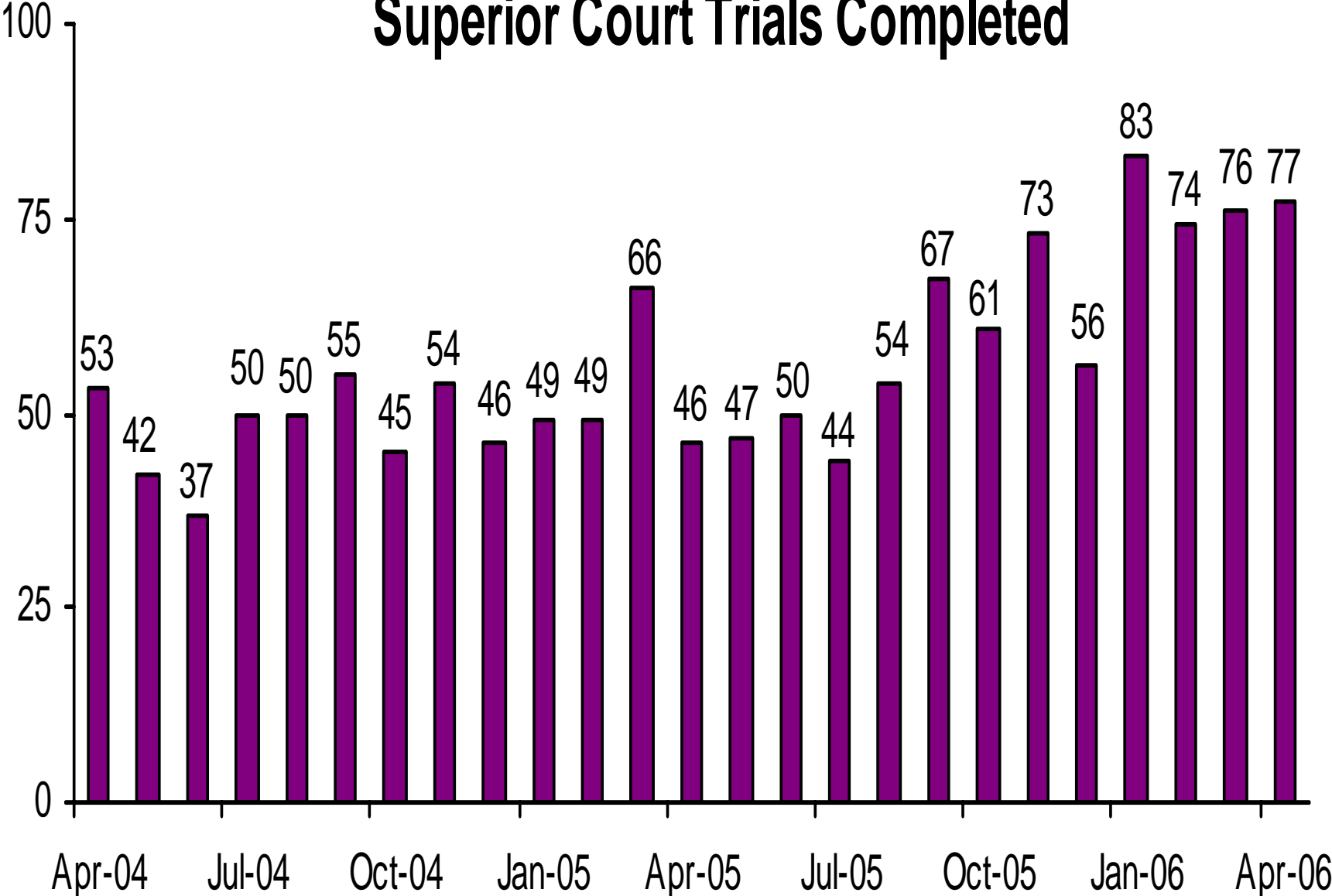


Grand Jury Indictments

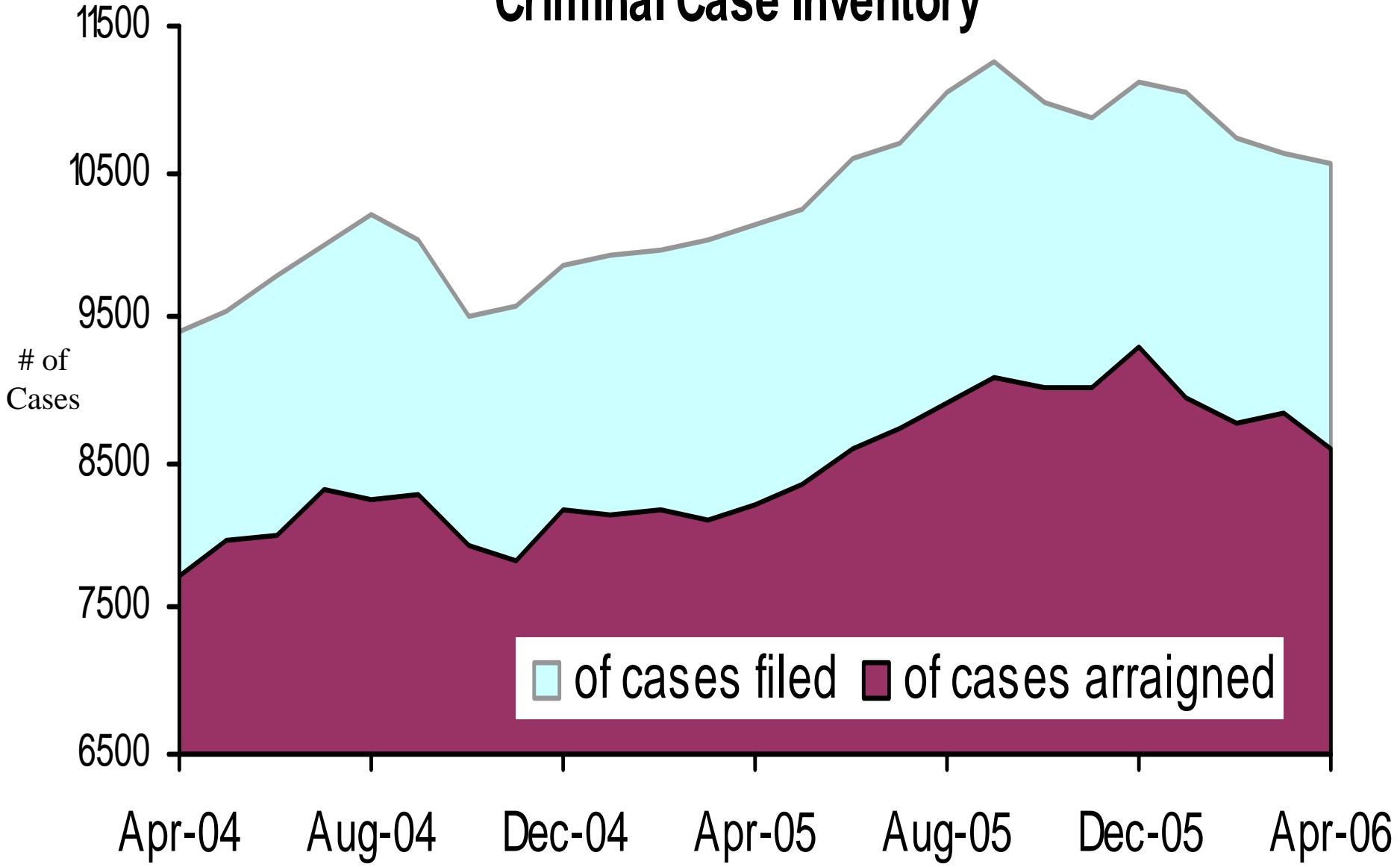


These numbers do not include notices of supervening indictments, non-EDC direct complaints, and juvenile direct complaints.

Superior Court Trials Completed



Active Pending Criminal Case Inventory



Pretrial Supervision

Defendant Monitoring Unit

Intensive

General

of Defendants Monitored

2500
2000
1500
1000
500

Apr-04

Aug-04

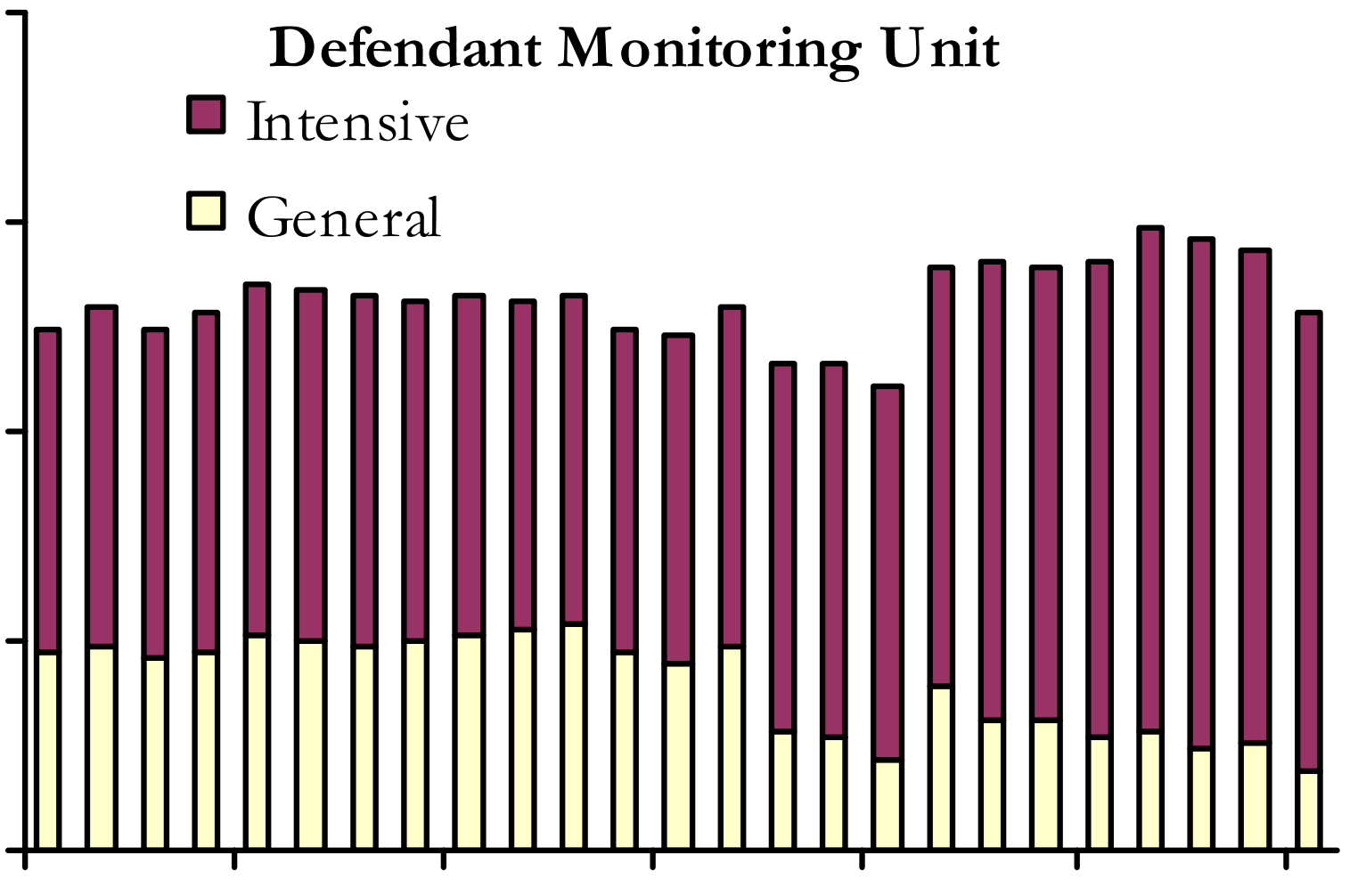
Dec-04

Apr-05

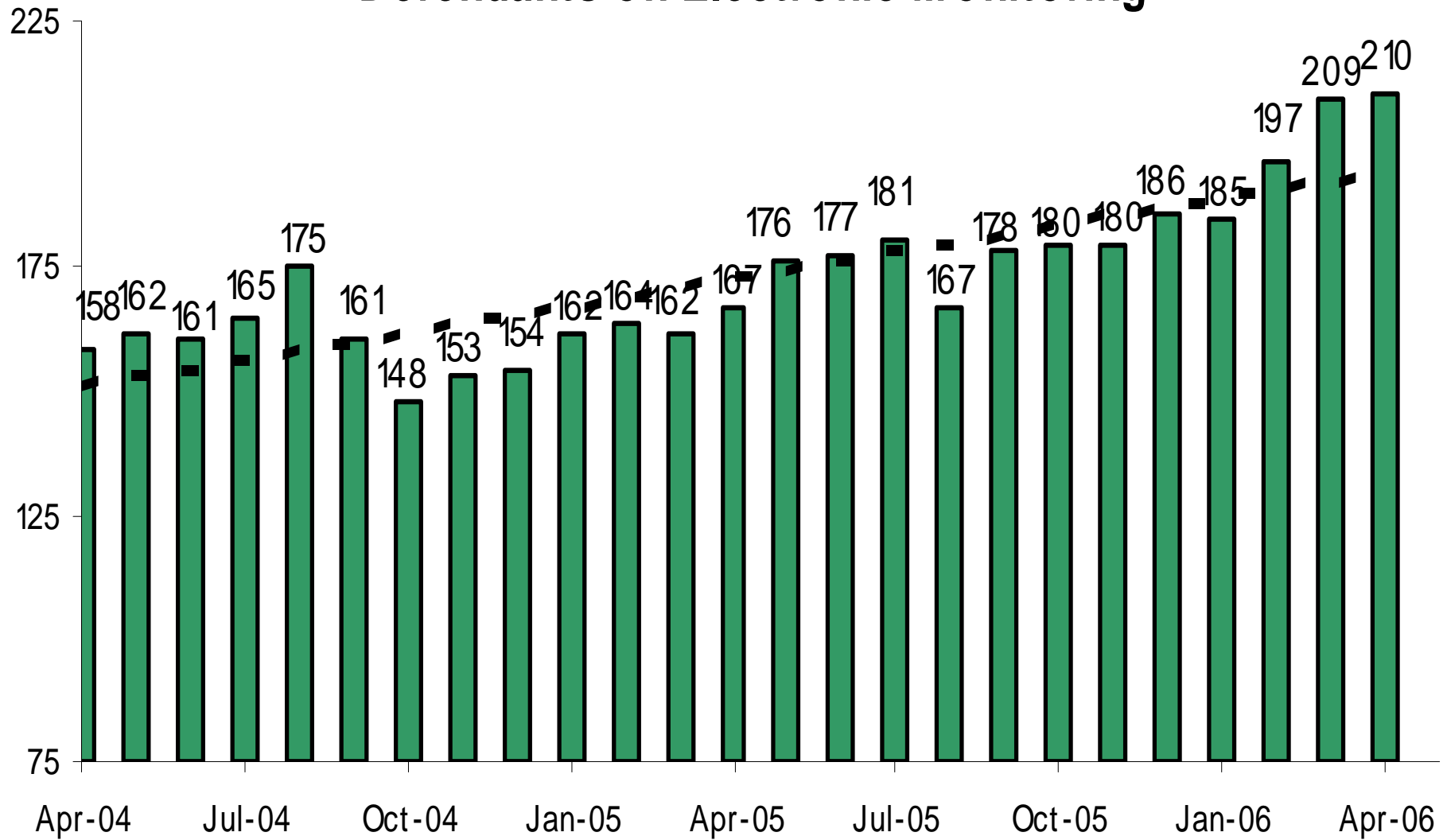
Aug-05

Dec-05

Apr-06



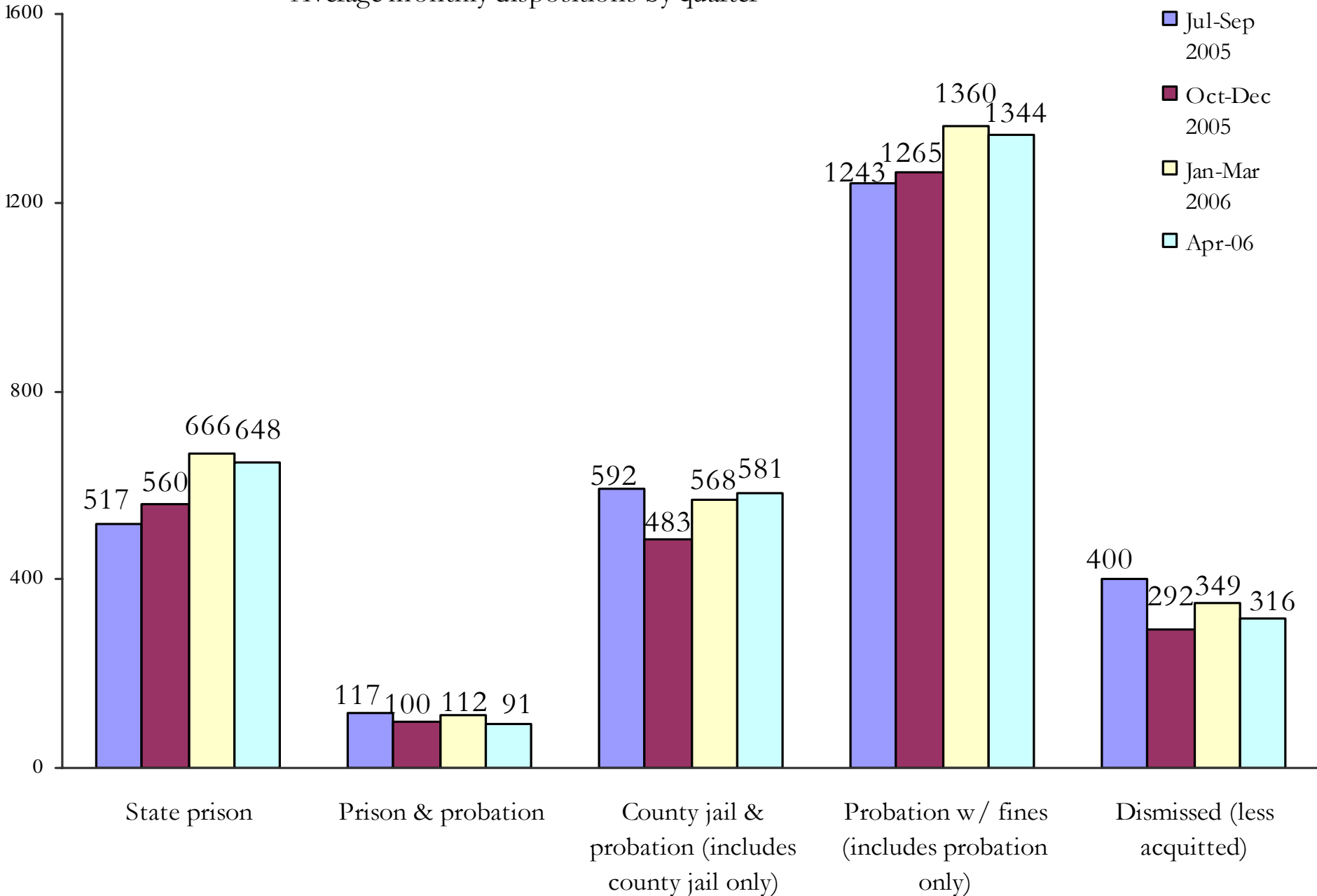
Pretrial Supervision Defendants on Electronic Monitoring



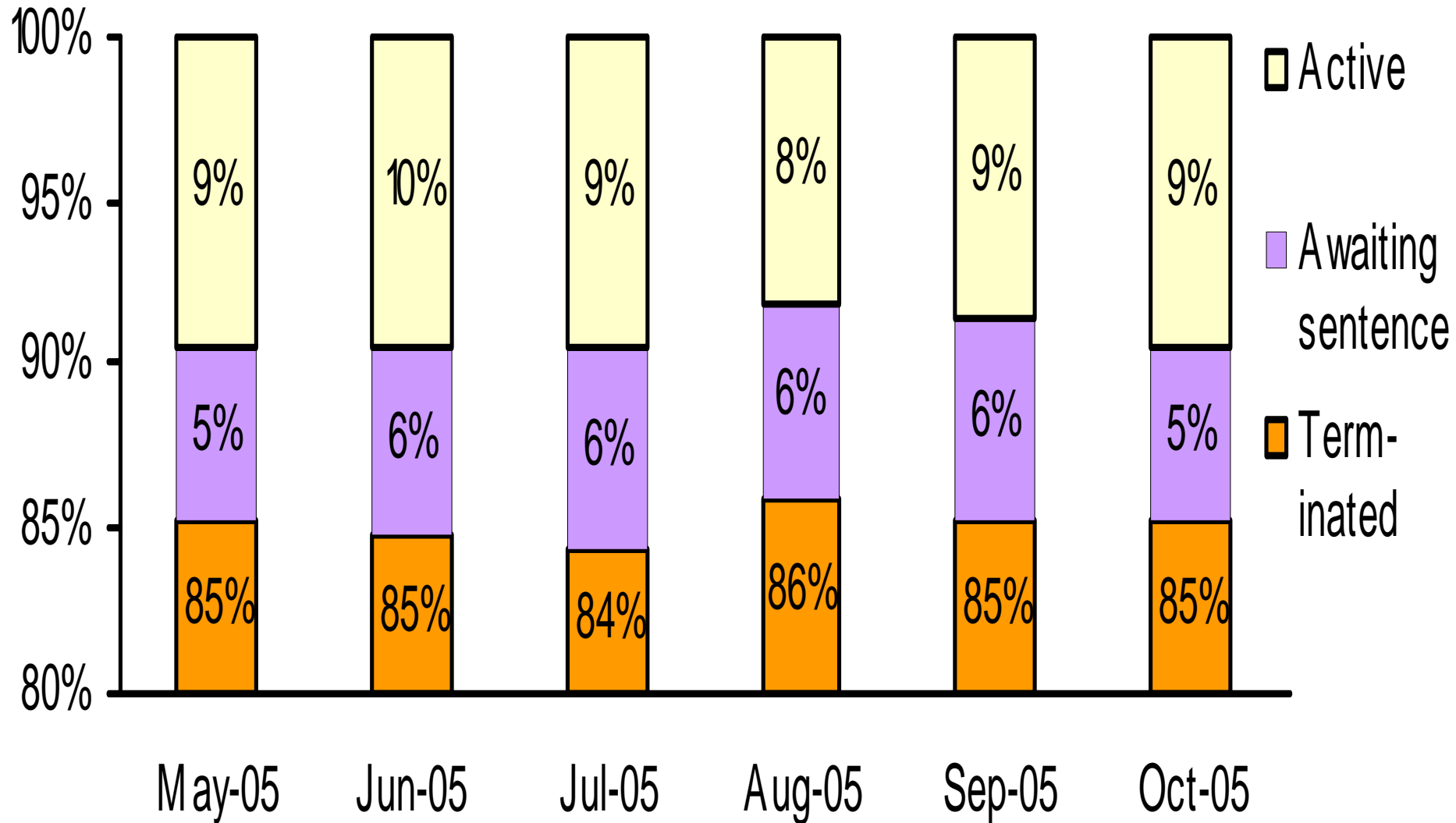
Disposition of Cases Terminated

Average monthly dispositions by quarter

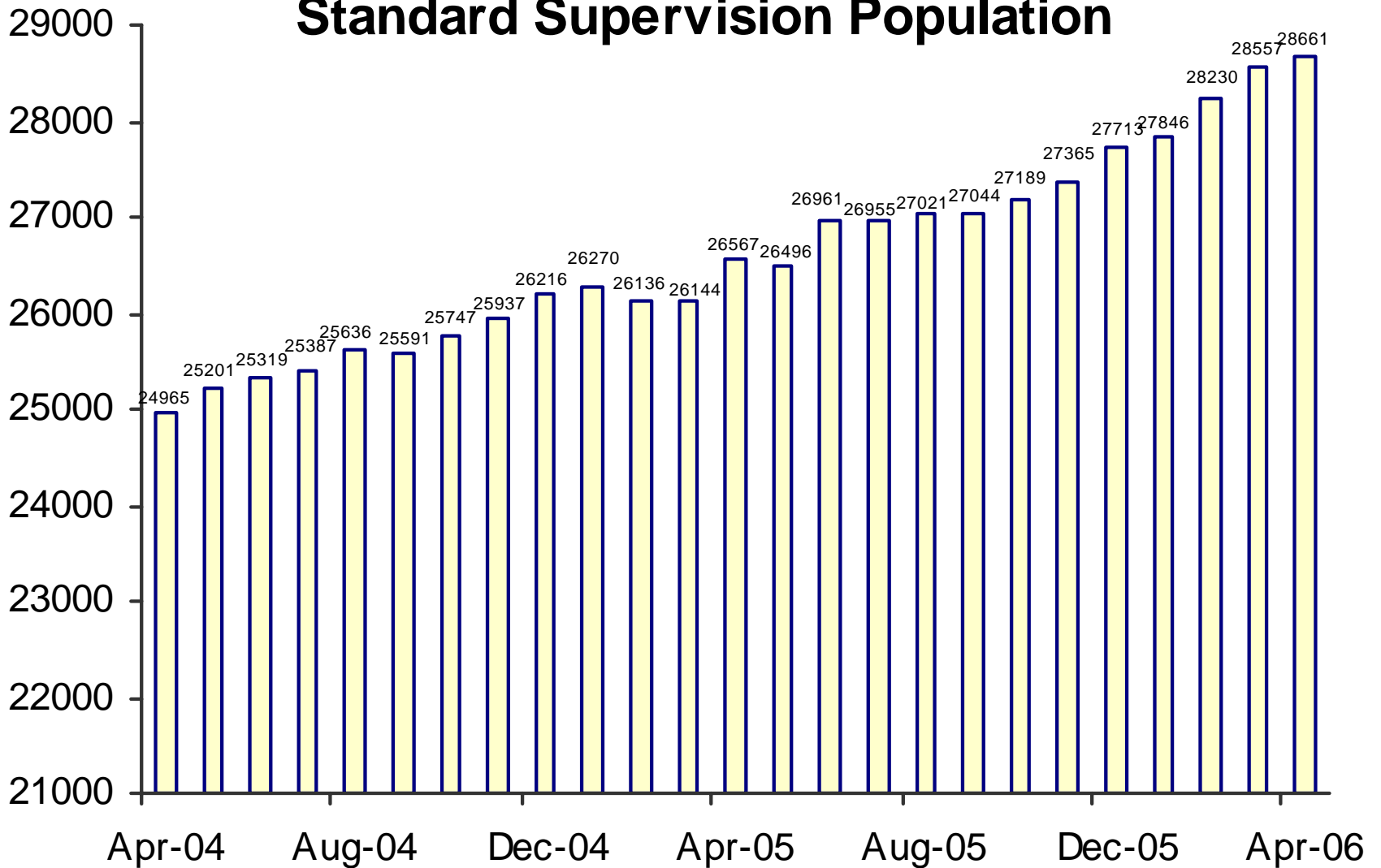
- Jul-Sep 2005
- Oct-Dec 2005
- Jan-Mar 2006
- Apr-06



Status of Cases After 180 Days

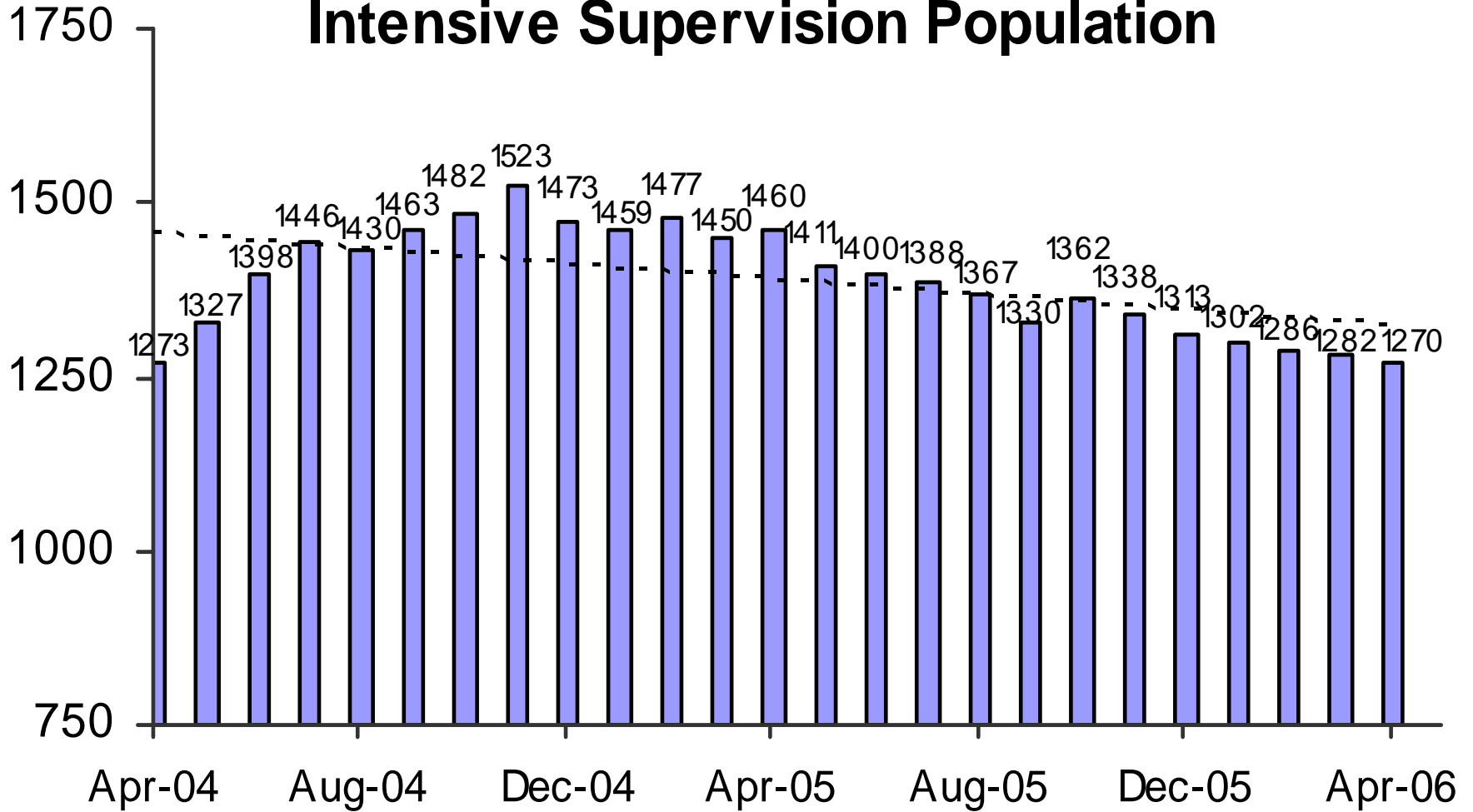


Adult Probation Standard Supervision Population

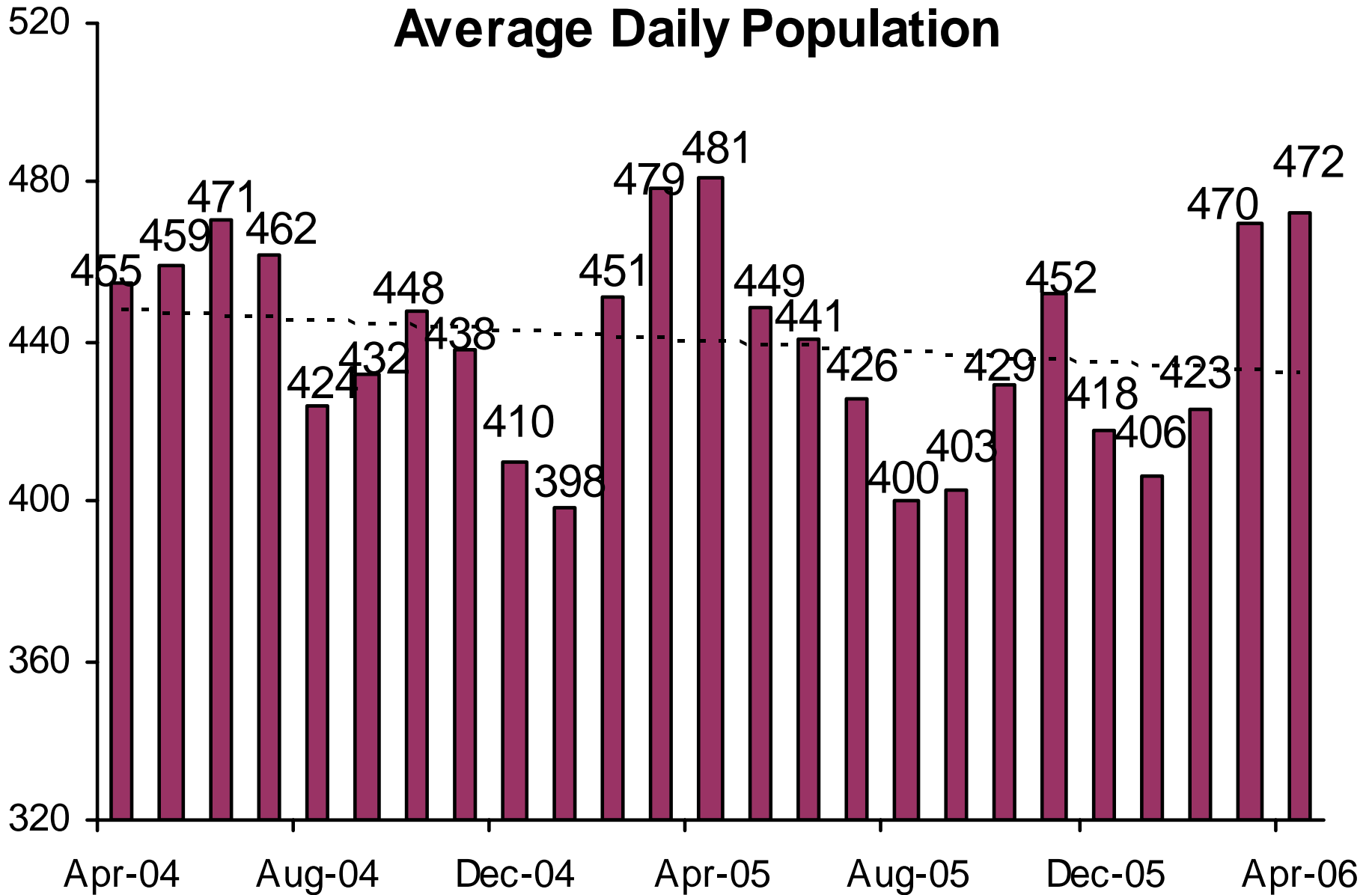


This population includes Interstate Compact and Report and Review caseloads, as reported to the Board of Supervisors and JLBC.

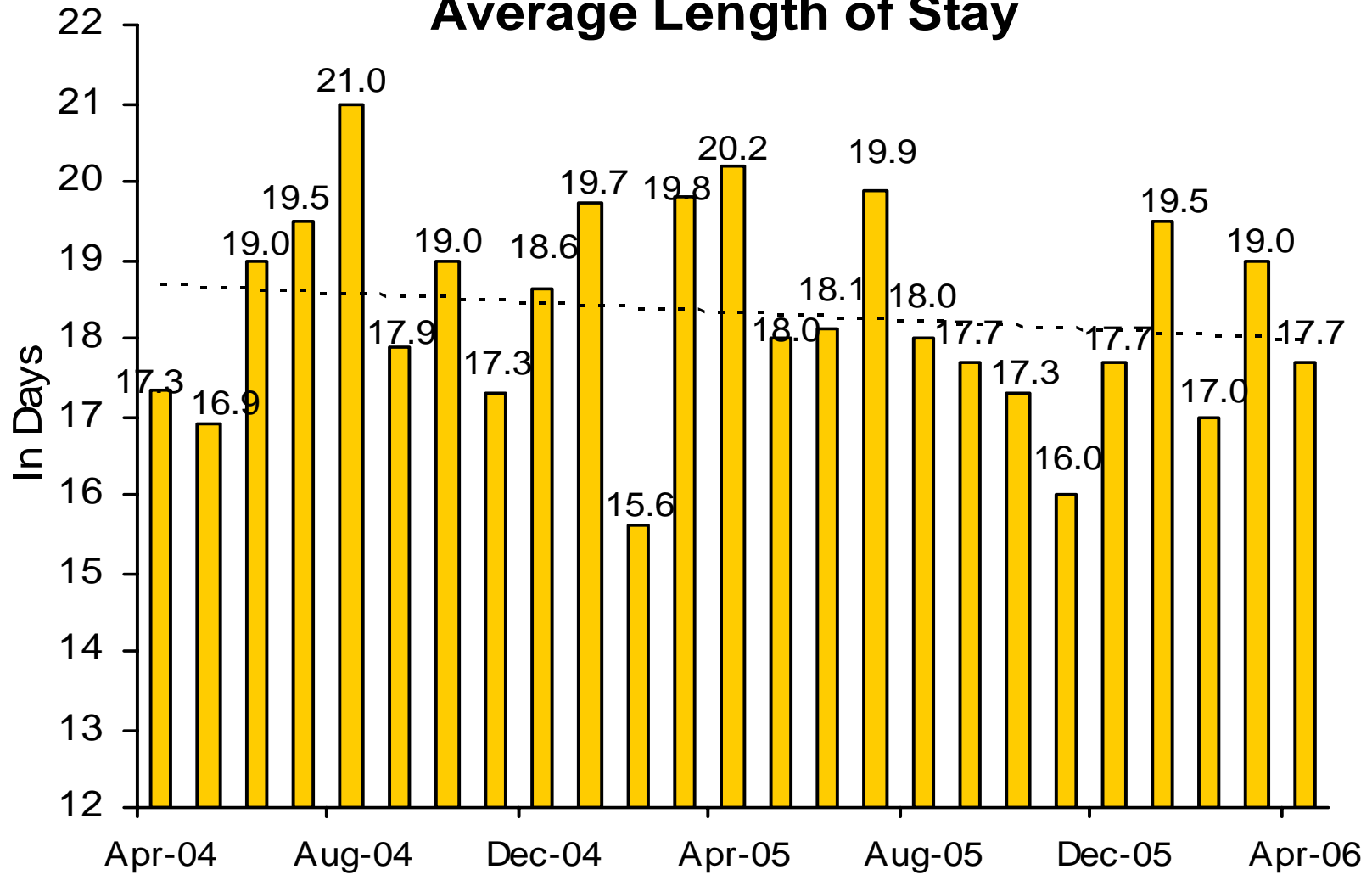
Adult Probation Intensive Supervision Population



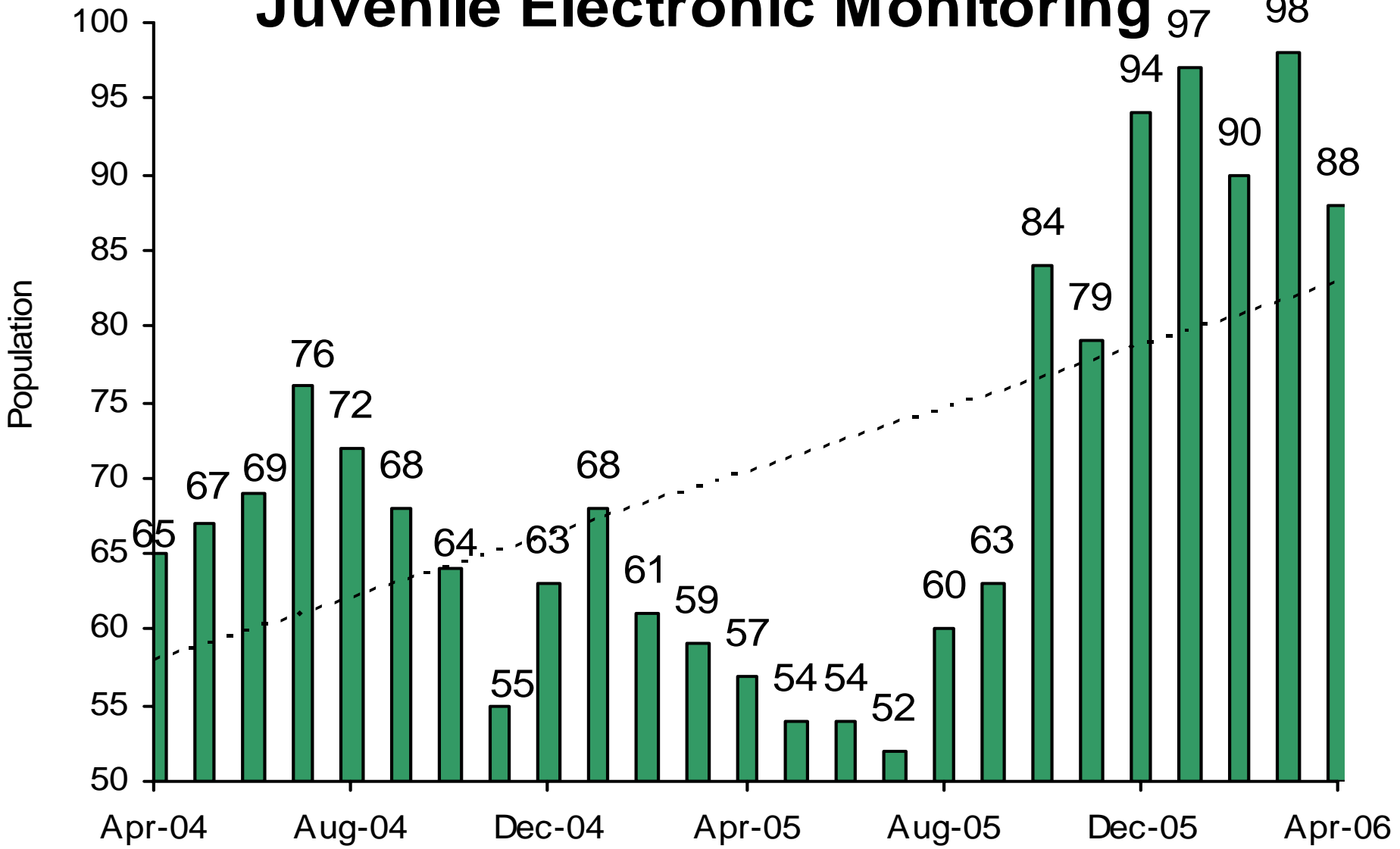
Juvenile Detention Average Daily Population



Juvenile Detention Average Length of Stay

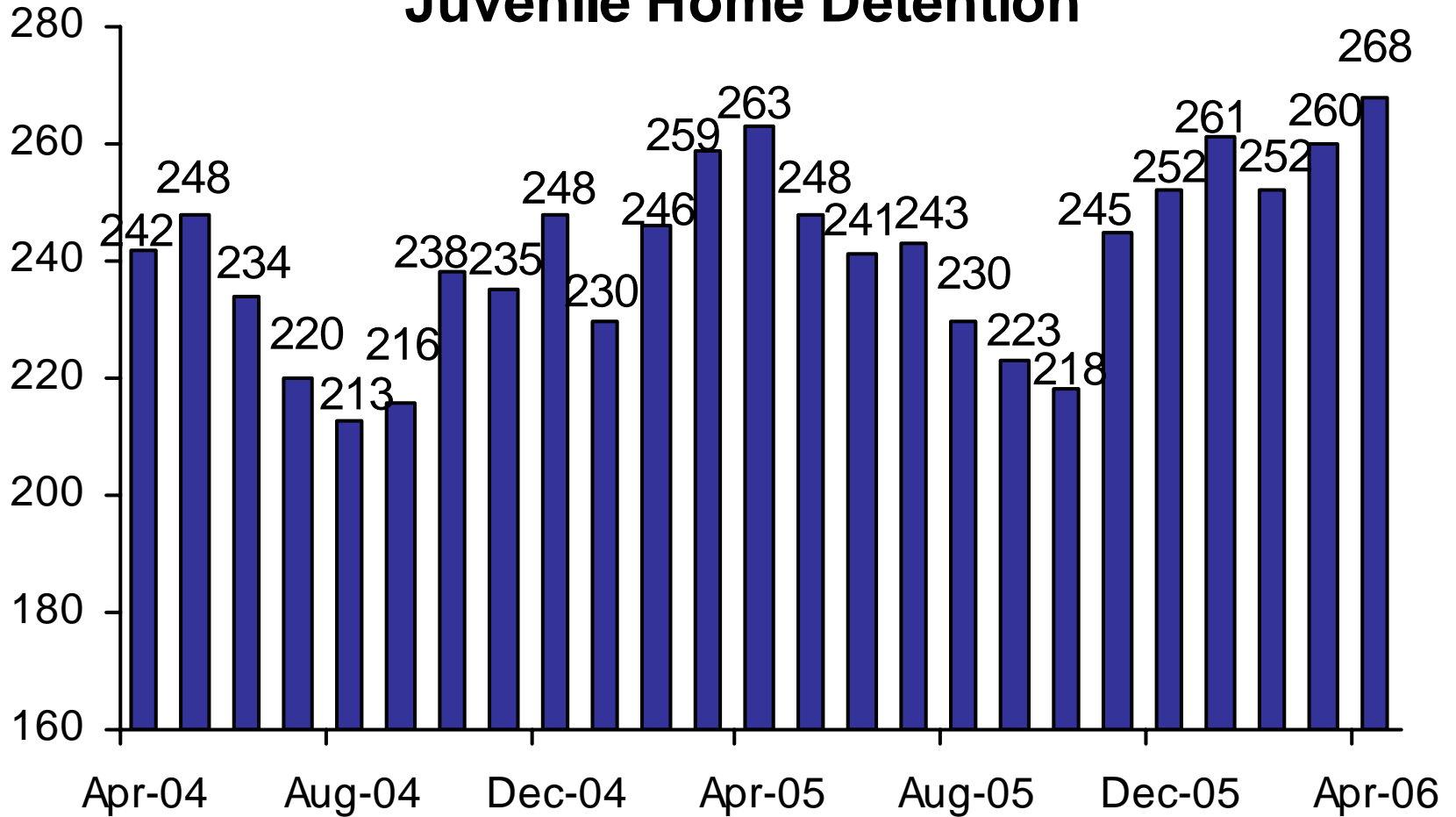


Juvenile Electronic Monitoring



The increase beginning in October 2005 is due to more accurate data collection.

Juvenile Home Detention



Juvenile Probation

■ # on standard probation ■ # on intensive probation

