



# Maricopa County

Criminal Justice System

## Monthly Performance Report for April 2007

	Annual Averages				Year-to-Date Avgs			Current Month		
	FY 2003	FY 2004	FY 2005	FY 2006	FY 2006	FY 2007	% Change	Apr-06	Apr-07	% Change
<b>Sheriff's Office</b>										
Bookings (monthly avg)	9,875	10,176	9,975	10,459	10,365	10,503	1.3%	10,614	11,083	4.4%
Releases (monthly avg)	9,857	10,196	9,934	10,485	10,363	10,507	1.4%	10,523	10,703	1.7%
Avg Daily Population	8,044	8,657	9,054	9,733	9,793	8,850	-9.6%	9,584	8,966	-6.4%
Avg Length of Stay (in days)	24.4	26	27.7	28.4	28.8	25.7	-10.8%	27.1	24.3	-10.3%
<b>Superior Court</b>										
Filings	2,904	3,062	2,996	3,248	3,175	3,106	-2.2%	2,979	3,148	5.7%
Terminations	2,330	2,612	2,758	2,984	2,918	2,967	1.7%	3,016	2,928	-2.9%
Clearance Rate	80.0%	85.0%	93.0%	92.1%	92.2%	96.5%	4.7%	101.2%	93.0%	-8.1%
Active Pending Inventory	8,123	9,106	10,002	10,856	10,888	10,275	-5.6%	10,565	10,649	0.8%
Trials Completed	59	42	51	68	67	86	28.4%	77	76	-1.3%
Trial Rate	2.0%	1.4%	1.7%	2.1%	2.1%	2.8%	33.3%	2.6%	2.4%	-7.7%
<b>Justice Courts Filings</b>										
DUI	949	986	1,023	971	1,076	1,007	-6.4%	1,037	742	-28.4%
All other Criminal Traffic	1,969	1,900	2,252	3,491	3,070	5,456	77.7%	3,295	5,113	55.2%
Civil Traffic	13,500	12,353	14,290	12,824	12,867	12,248	-4.8%	9,142	9,219	0.8%
Misdemeanor	2,714	2,531	2,581	2,052	1,943	2,168	11.6%	2,046	2,204	7.7%
Small Claims	1,694	1,796	1,578	1,144	1,140	1,200	5.3%	959	1,268	32.2%
Forcible Detainers	6,456	6,859	6,842	7,065	7,062	5,452	-22.8%	6,405	4,944	-22.8%
Other Civil	2,311	2,579	2,763	2,628	2,595	5,497	111.8%	2,300	6,508	183.0%
Orders of Protection	542	523	485	508	498	461	-7.4%	526	523	-0.6%
Injunctions against Harassment	436	463	495	446	434	437	0.7%	484	506	4.5%
<b>Adult Probation</b>										
Pretrial General Supervision	700	990	978	775	774	765	-1.2%	690	652	-5.5%
Pretrial Intensive Supervision	331	657	816	1,077	1,078	1,104	2.4%	1,091	996	-8.7%
Pretrial Electronic Monitoring	97	153	164	190	187	242	29.4%	210	239	13.8%
Standard Probation Supervision	25,400	25,055	26,091	27,896	27,658	30,106	8.9%	28,661	30,424	6.2%
Intensive Probation Supervision	1,267	1,078	1,456	1,321	1,324	1,273	-3.9%	1,270	1,215	-4.3%
<b>Juvenile Detention and Probation</b>										
Avg Daily Detention Pop	401	431	443	433	430	405	-5.8%	472	379	-19.7%
Avg Length of Stay (in days)	15.1	16.6	18.7	18.5	17.9	16.7	-6.7%	17.7	14.9	-15.8%
Standard Probation	4,387	4,232	4,108	4,055	4,026	4,265	5.9%	4,061	4,305	6.0%
Intensive Probation	659	518	547	527	528	518	-1.9%	503	521	3.6%



# Maricopa County

## Criminal Justice System

### ***CRIMINAL JUSTICE SYSTEM NEWS – APRIL 2007***

#### **Adult Incarceration**

**Bookings decreased** to 11,083 in April, compared to March's 11,338. The **Average Daily Population increased** from 8,782 to 8,966. This is typical of the cyclical nature of jail population, which historically rises at this time every year. Also, the inmates held as a result of Proposition 100 (to determine if somebody is in the United States illegally and should be held non-bondable) may be impacting the jail population. However, ADP is still down 9.6% when compared to the same time period last Fiscal Year. The **pretrial and sentenced populations increased** in April compared to March: pretrial from 5,736 to 5,886 and sentenced from 2,662 to 2,706. The **hold population decreased** from 345 to 327. **Overall ALOS slightly increased** from 24.0 to 24.3 days. ALOS is down 10.8% when compared to the same time period last Fiscal Year. **The ALOS for agency holds decreased** from 65.8 to 61.9 days. **Pretrial ALOS increased** from 7.9 to 8.1 days. **Sentenced ALOS decreased** from 28.3 to 26 days (this is the lowest sentenced ALOS since April 2004 – 22.3 days).

#### **Superior Court Filings & Case Processing**

**Criminal filings and terminations decreased** in April: filings from 3,750 (most ever) to 3,148 and terminations from 3,077 to 2,928. The resulting clearance rate was 93.0%. **The active pending case inventory increased** from 10,219 to 10,649. **Filings into RCC and EDC decreased in April compared to March:** RCC filings from 2,335 to 1,918, EDC filings from 1,143 to 963. **76 trials were completed in April** compared to March's 97. **The April trial rate was 2.4%**, a decrease from March's 2.6%. The trial rate is 33% higher when compared to the same time period last Fiscal Year.

#### **Justice Court Filings**

The number of **DUIs decreased** from March to April, from 850 to 742. **Civil traffic decreased** from 13,006 to 9,219. **Orders of protection increased** from 507 to 523; **injunctions against harassment also increased**, from 445 to 506.

#### **Adult Probation**

**Measures of pretrial supervision remained relatively stable from March to April:** general from 664 to 652; intensive from 1,048 to 996; and electronic monitoring from 241 to 239. **Levels of standard and intensive probation supervision also remained relatively stable:** standard from 30,407 to 30,424; intensive from 1,252 to 1,215 (this is the lowest level since February 2004 – 1,169). The level of standard probation is 8.9% higher when compared to the same time period last Fiscal Year, while the level of intensive probation is 3.9% lower.

#### **Juvenile Detention and Probation**

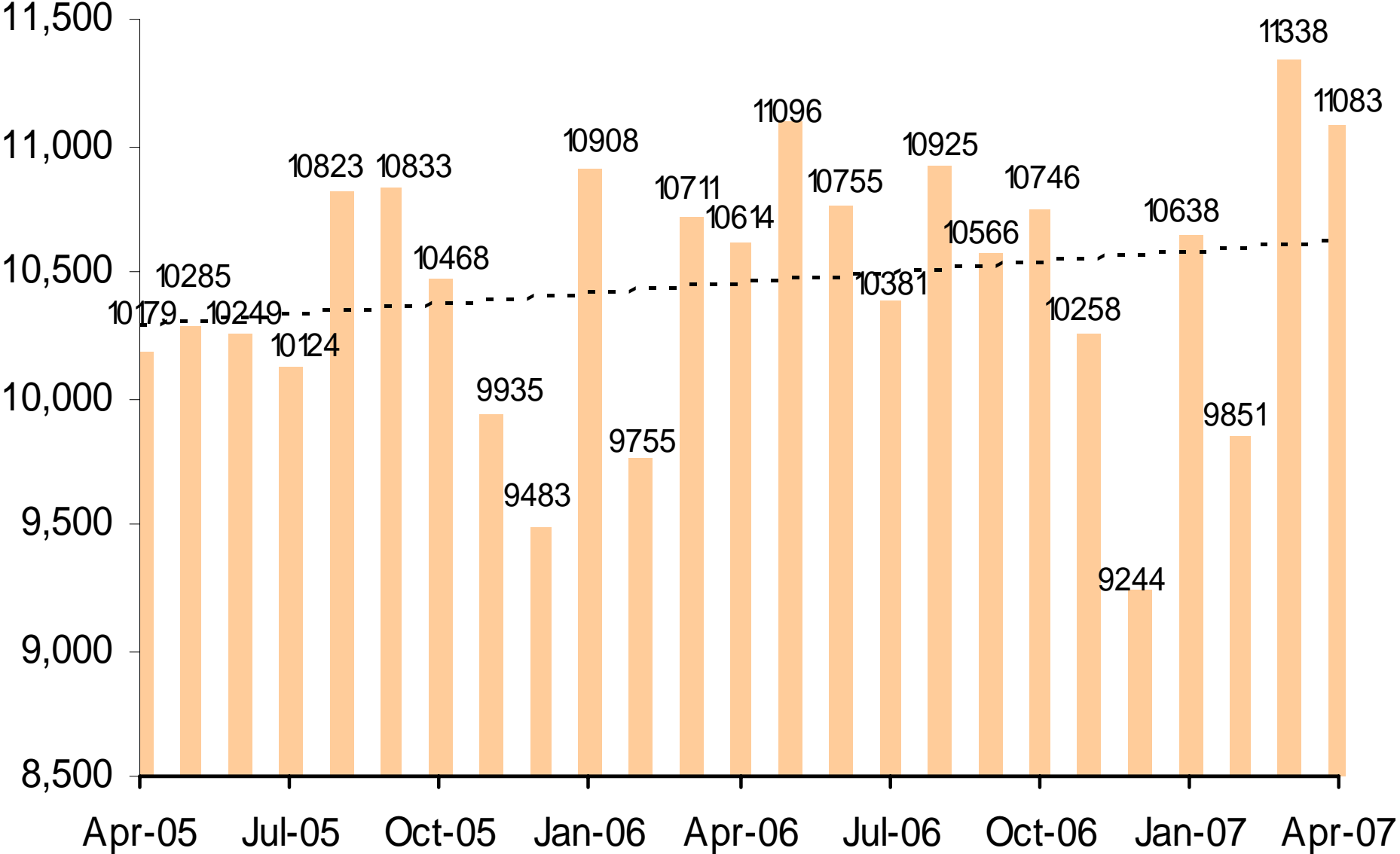
The **Average Daily Detention Population decreased** from 410 in March to 379 in April. ADP is down 5.8% when compared to the same time period last Fiscal Year. **ALOS increased** from 16.8 to 14.9 days. ALOS is down 6.7% when compared to the same time period last Fiscal Year. **Electronic Monitoring increased** from March's 150 to April's 159. **Home detention decreased slightly** from 253 in March to 249 in April.

**Levels of juvenile standard probation increased, while intensive decreased slightly:** standard from 4,253 to 4,305 and intensive from 527 to 521.

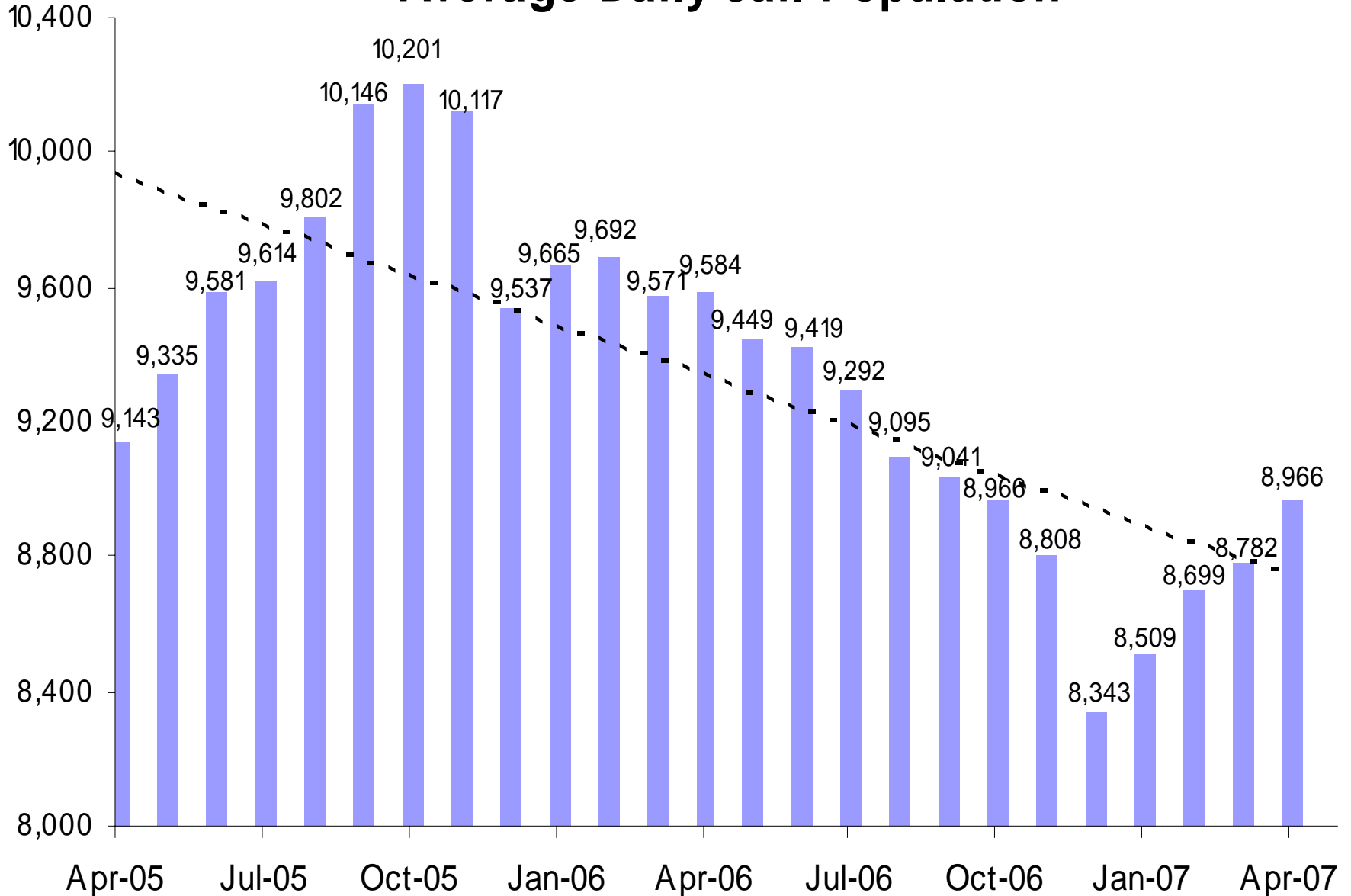
---

A criminal justice system-wide goal is to enhance the utility and timeliness of management information on case processing, in an effort to help agencies effectively address current events. An interagency committee of McJustice helps develop this report. **Input from readers is welcomed.** Please contact Amy Rex at [rexa@mail.maricopa.gov](mailto:rexa@mail.maricopa.gov) or 602-506-1310.

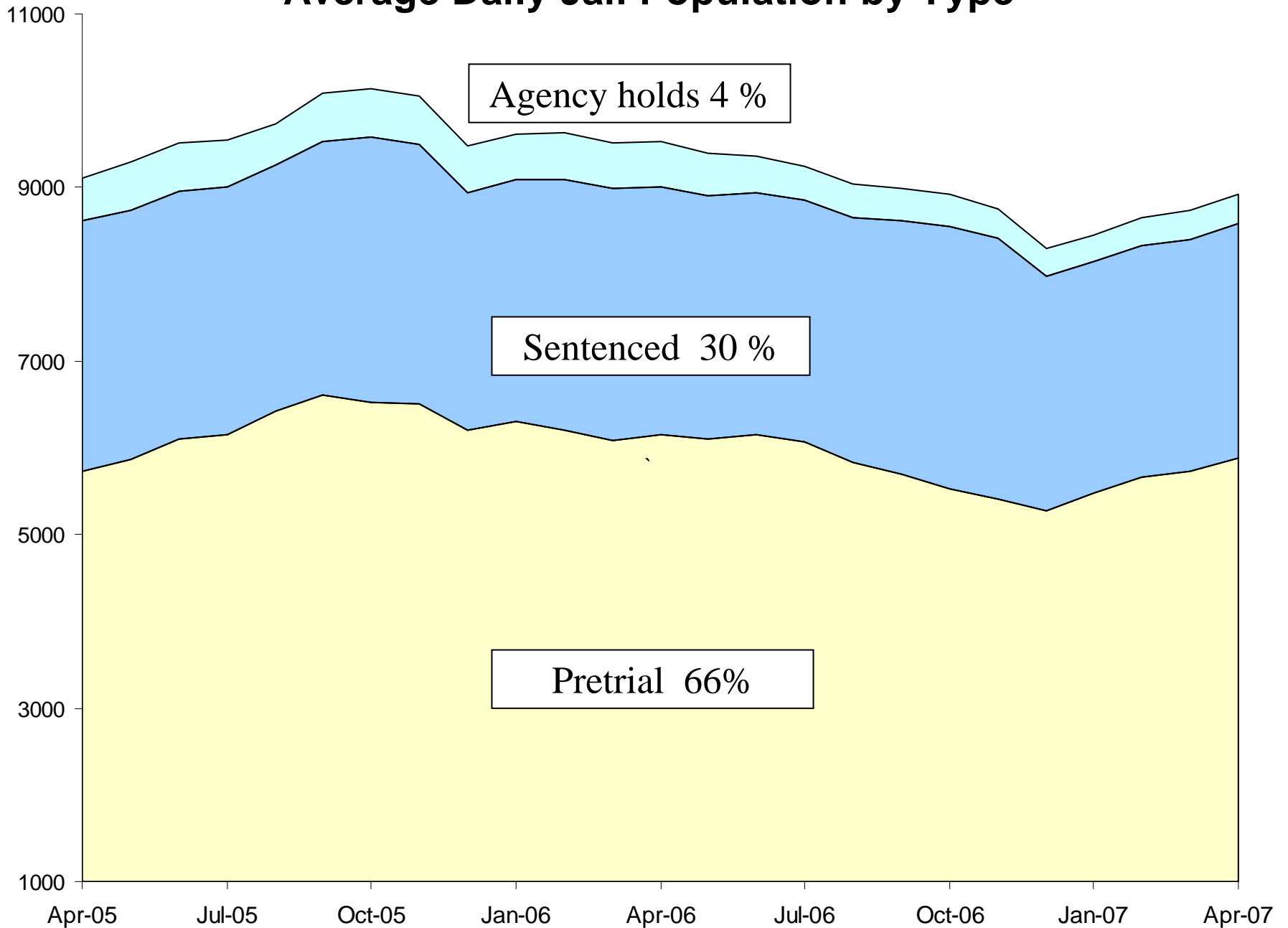
# Jail Bookings



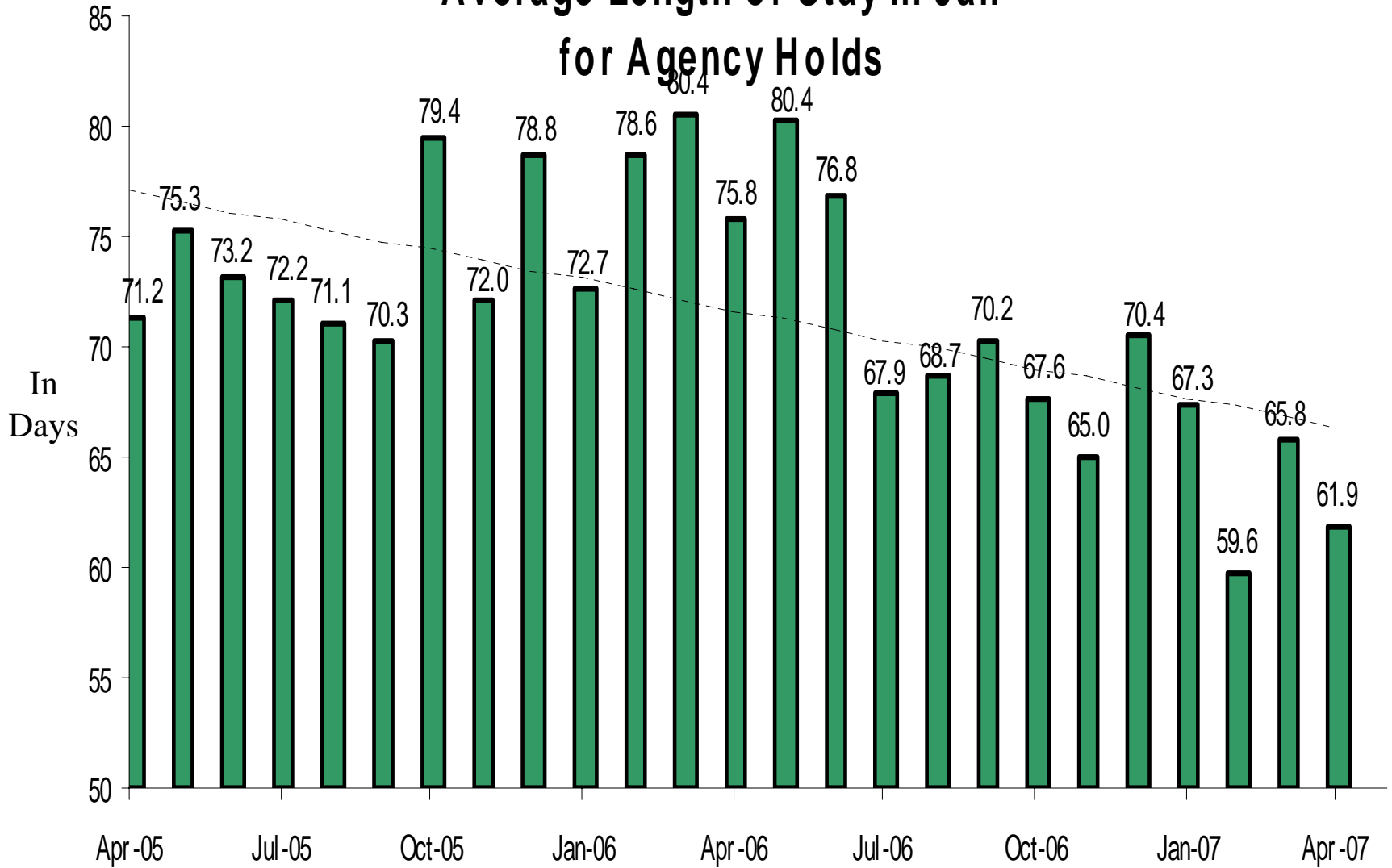
# Average Daily Jail Population



# Average Daily Jail Population by Type

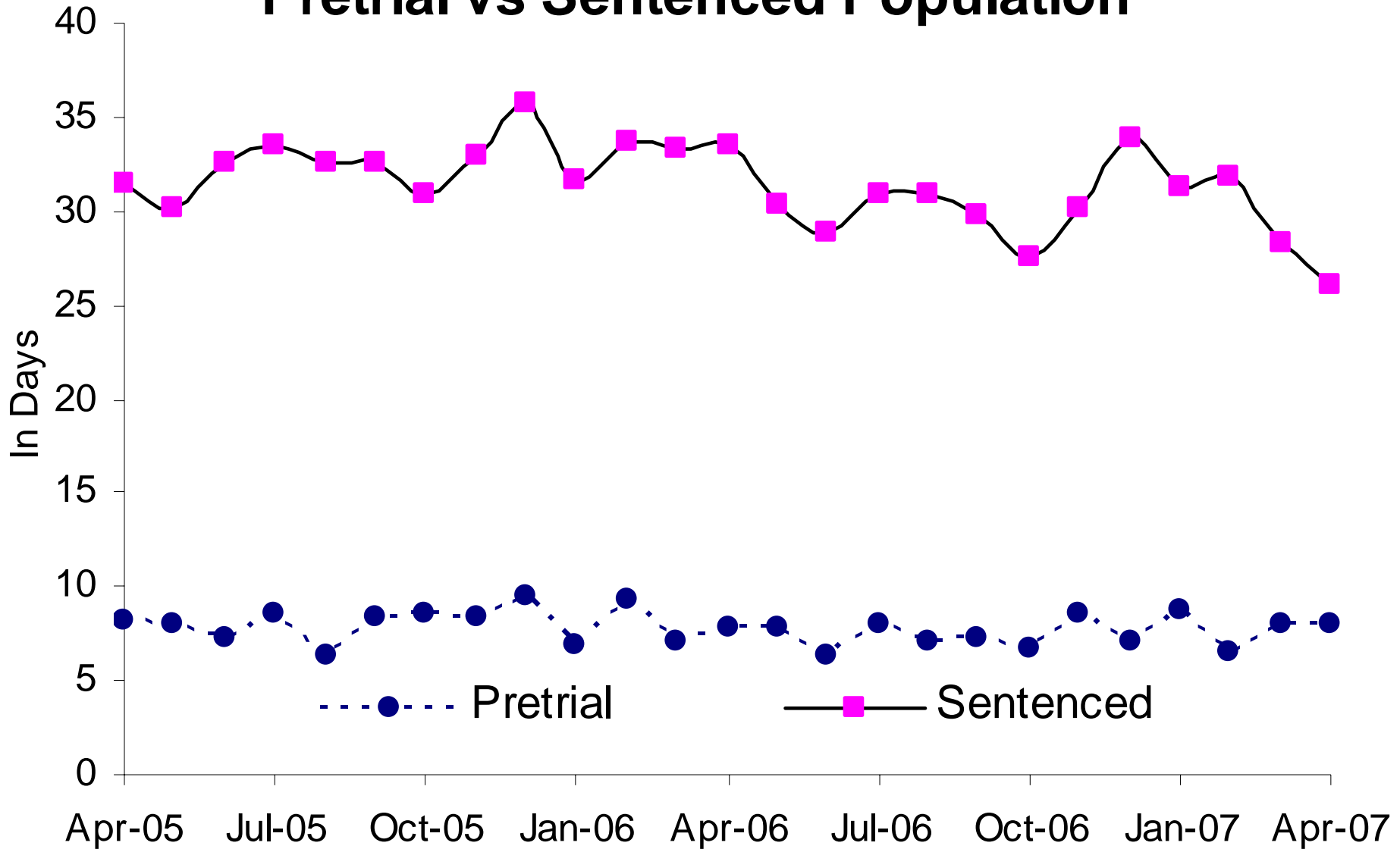


# Average Length of Stay in Jail for Agency Holds

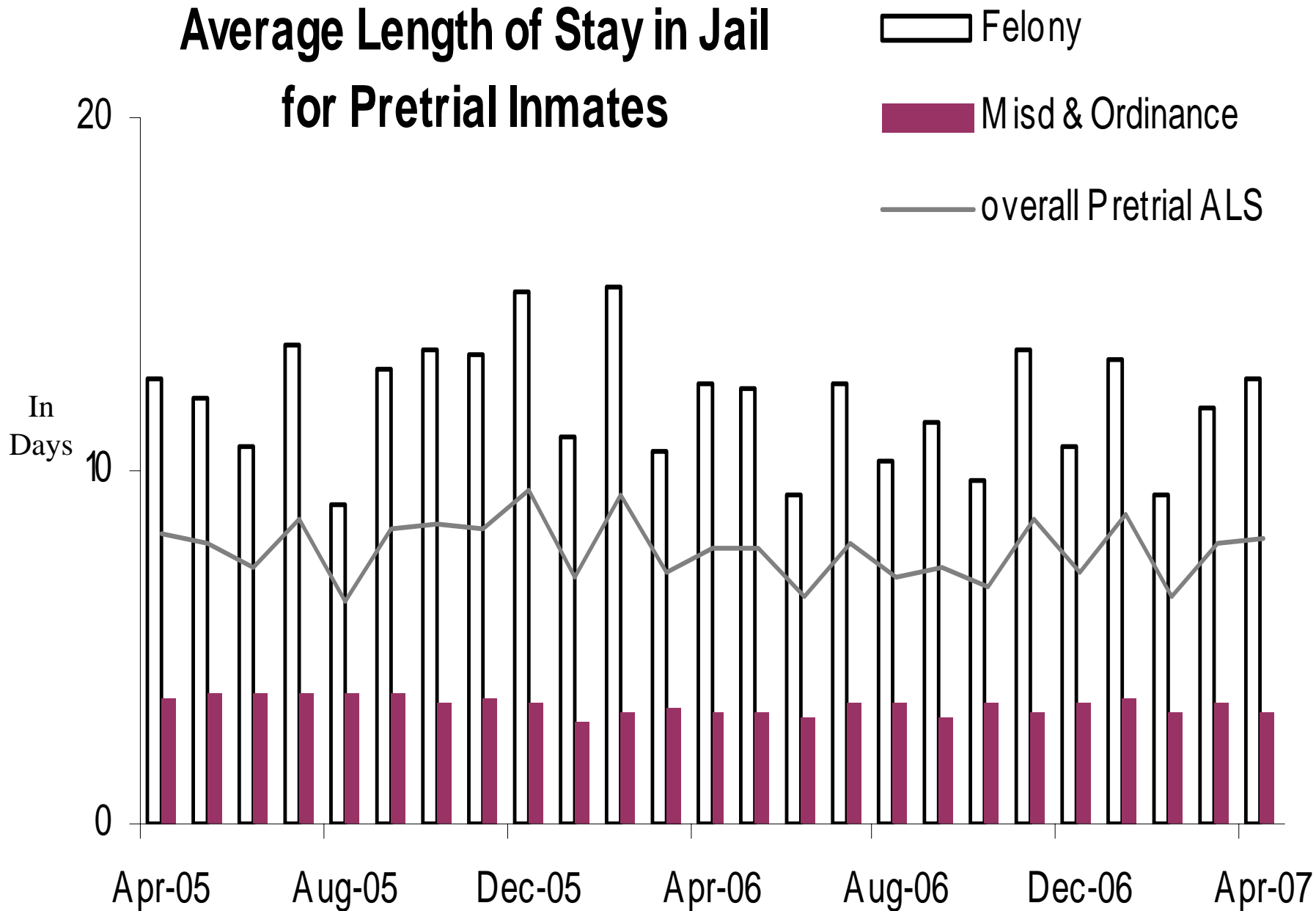


57% Dept of Corrections, 25% Federal agencies, 17% other

# Average Length of Stay in Jail Pretrial vs Sentenced Population

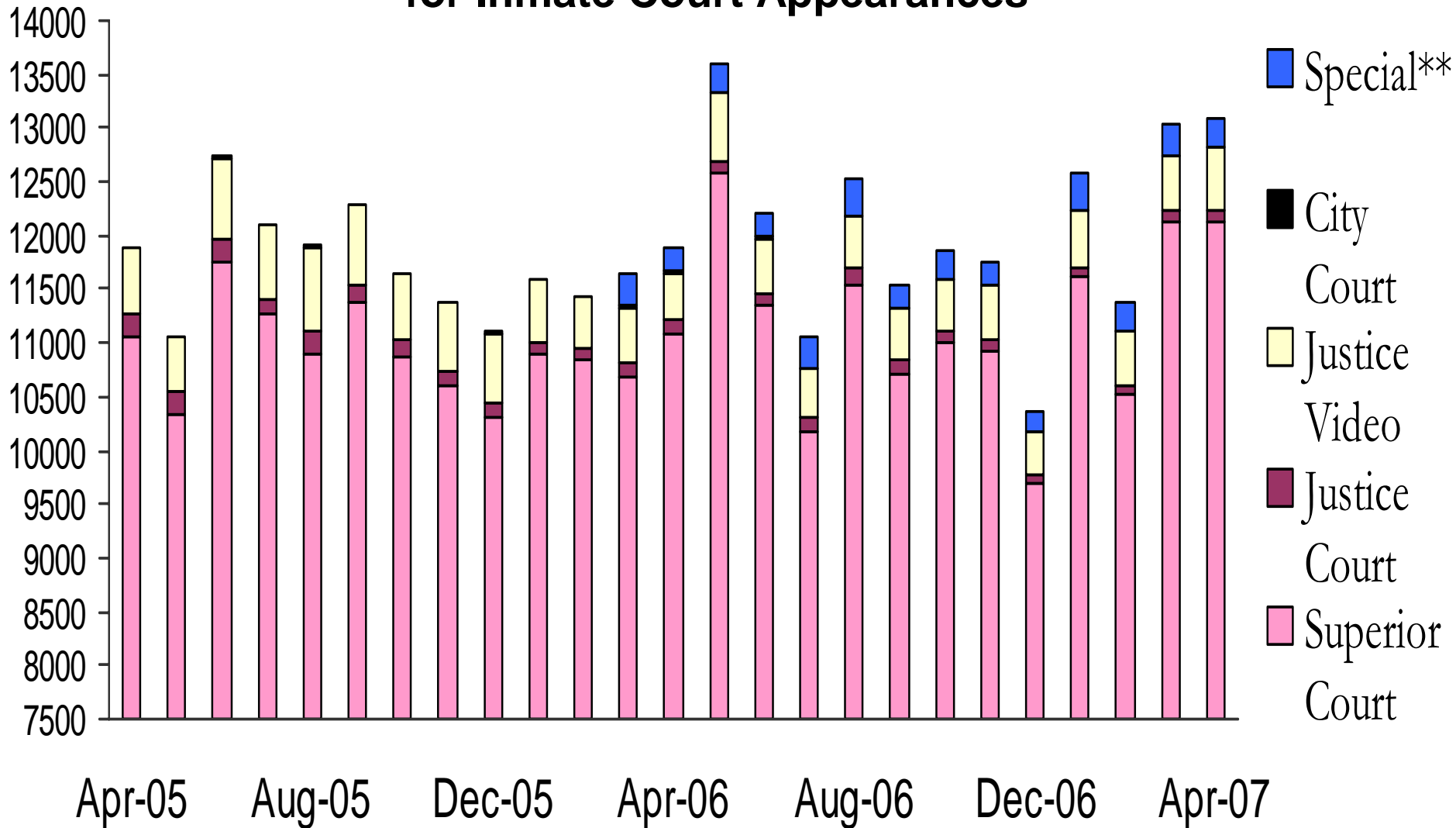


# Average Length of Stay in Jail for Pretrial Inmates





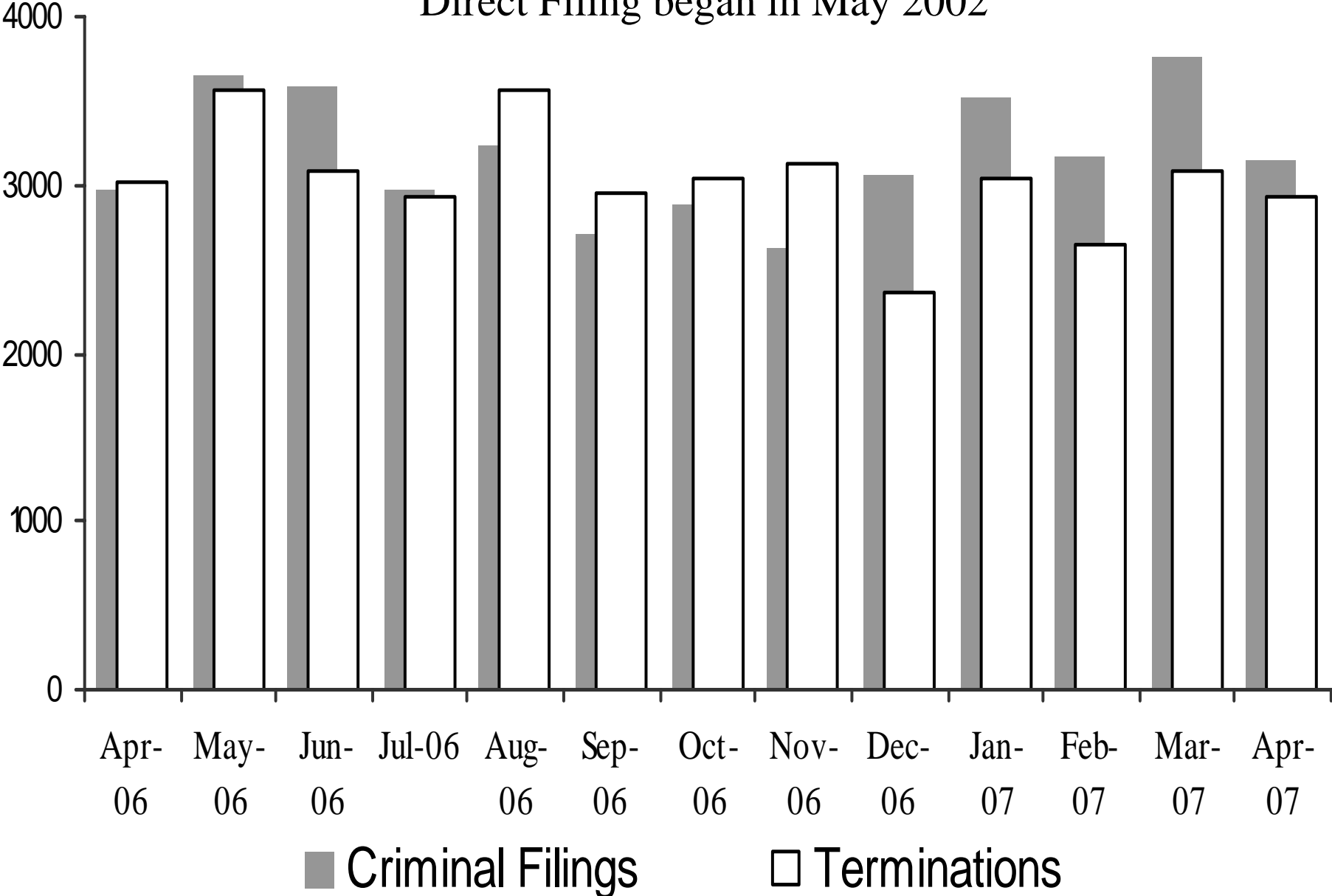
# Sheriff's Office Transports for Inmate Court Appearances



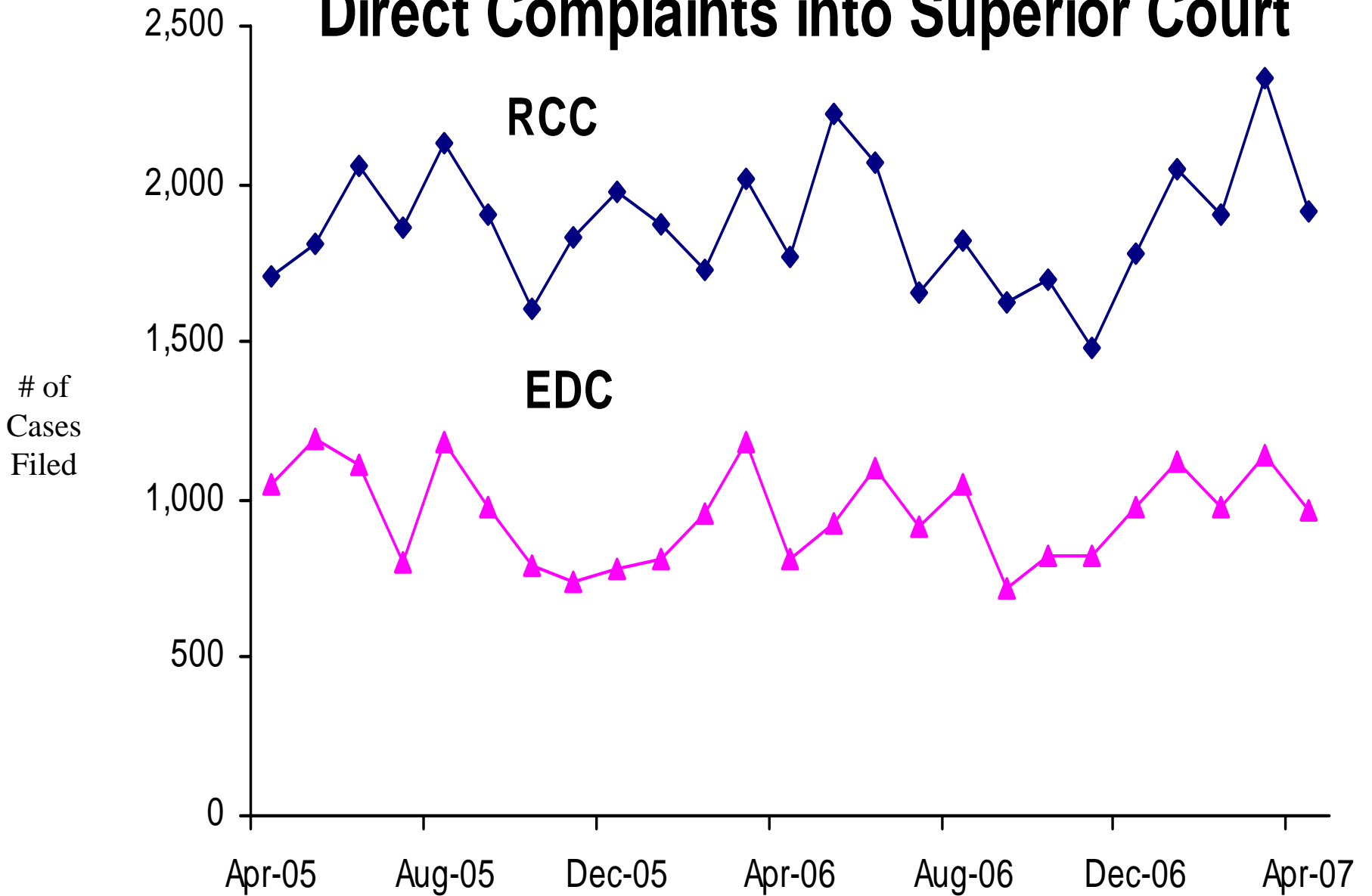
“Special” cases added in March 2006 include Downtown Remands, SEJD Remands, and SEJD Unscheduled.

# Superior Court Filings and Terminations

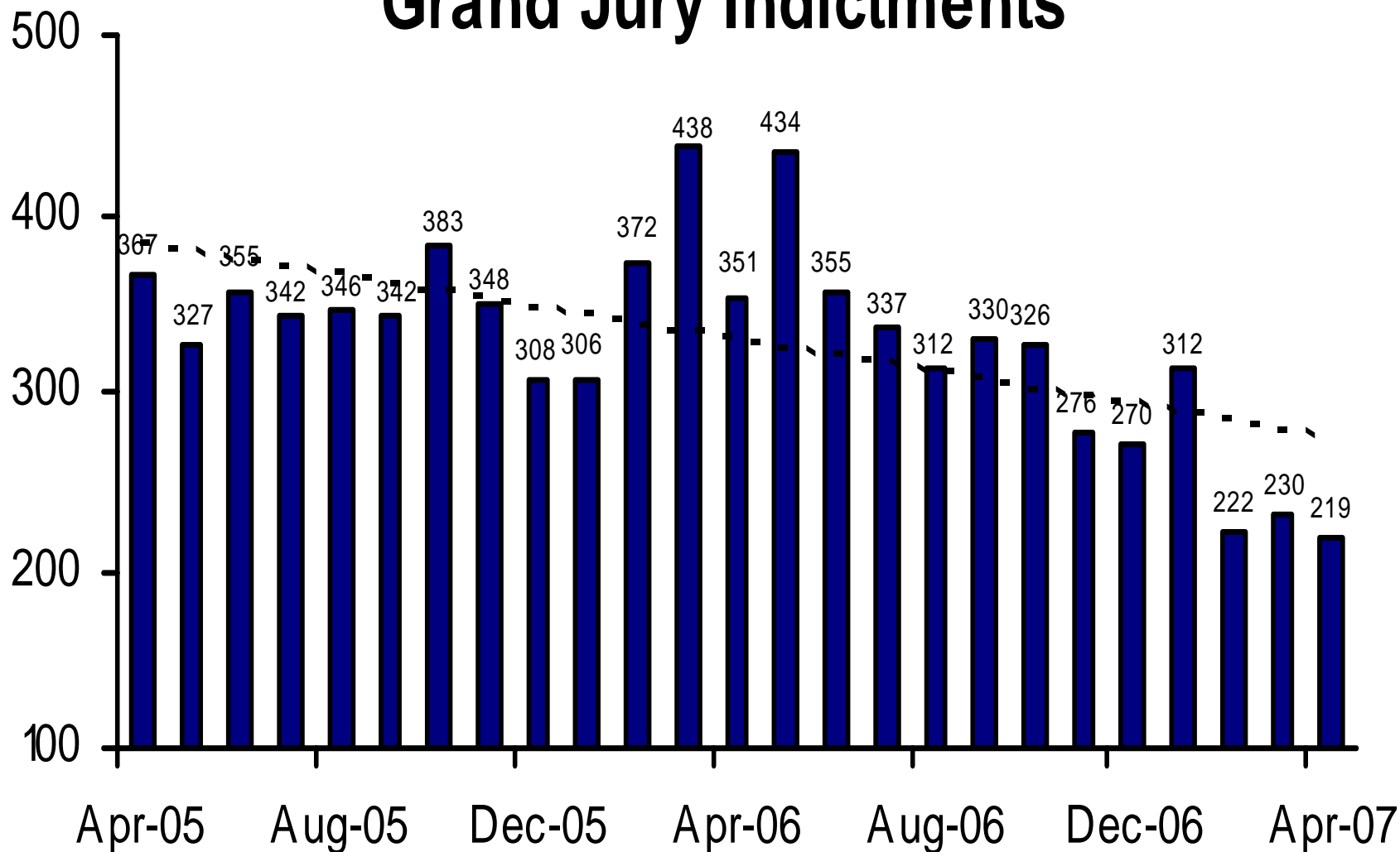
Direct Filing began in May 2002



# Direct Complaints into Superior Court

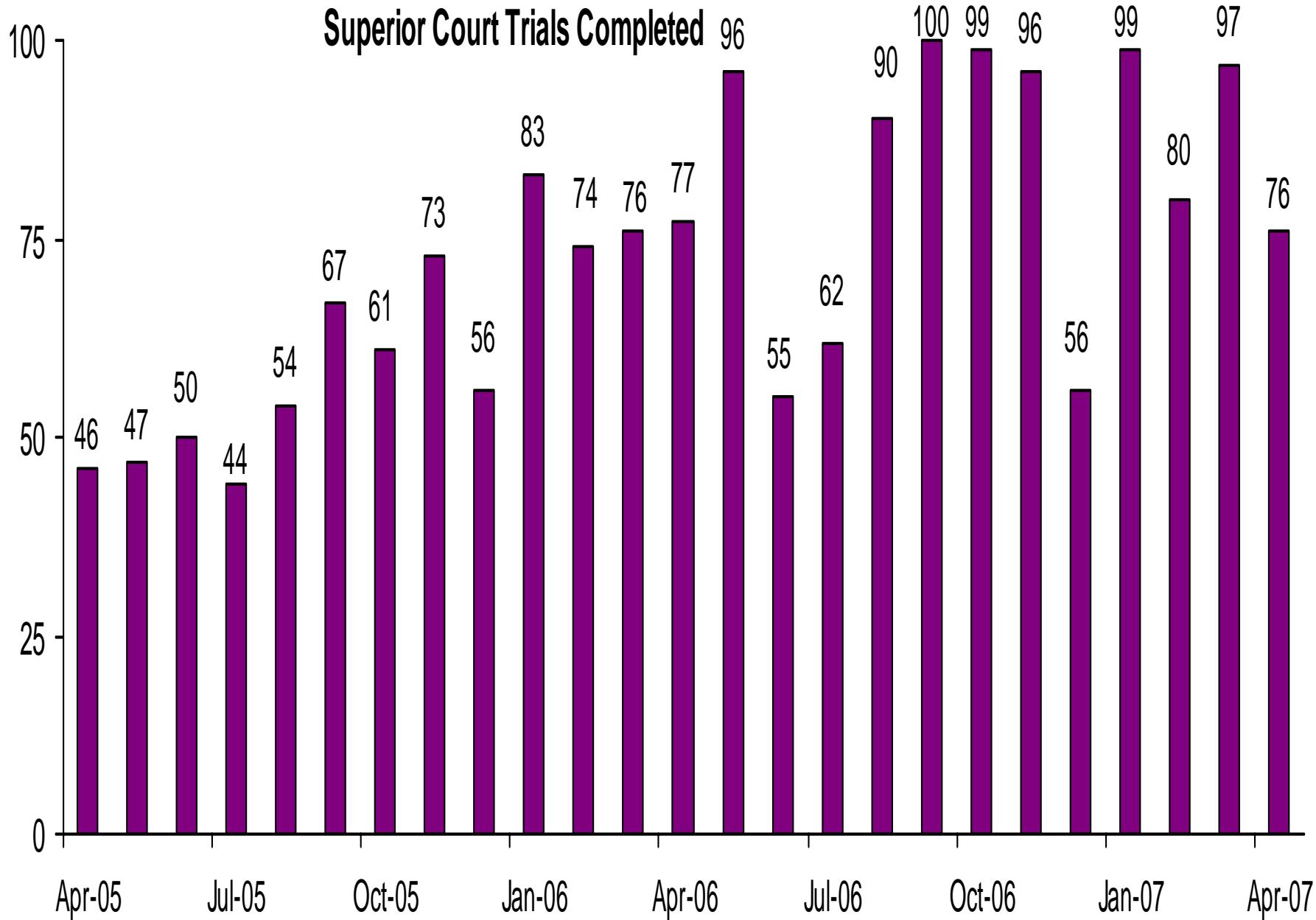


# Grand Jury Indictments

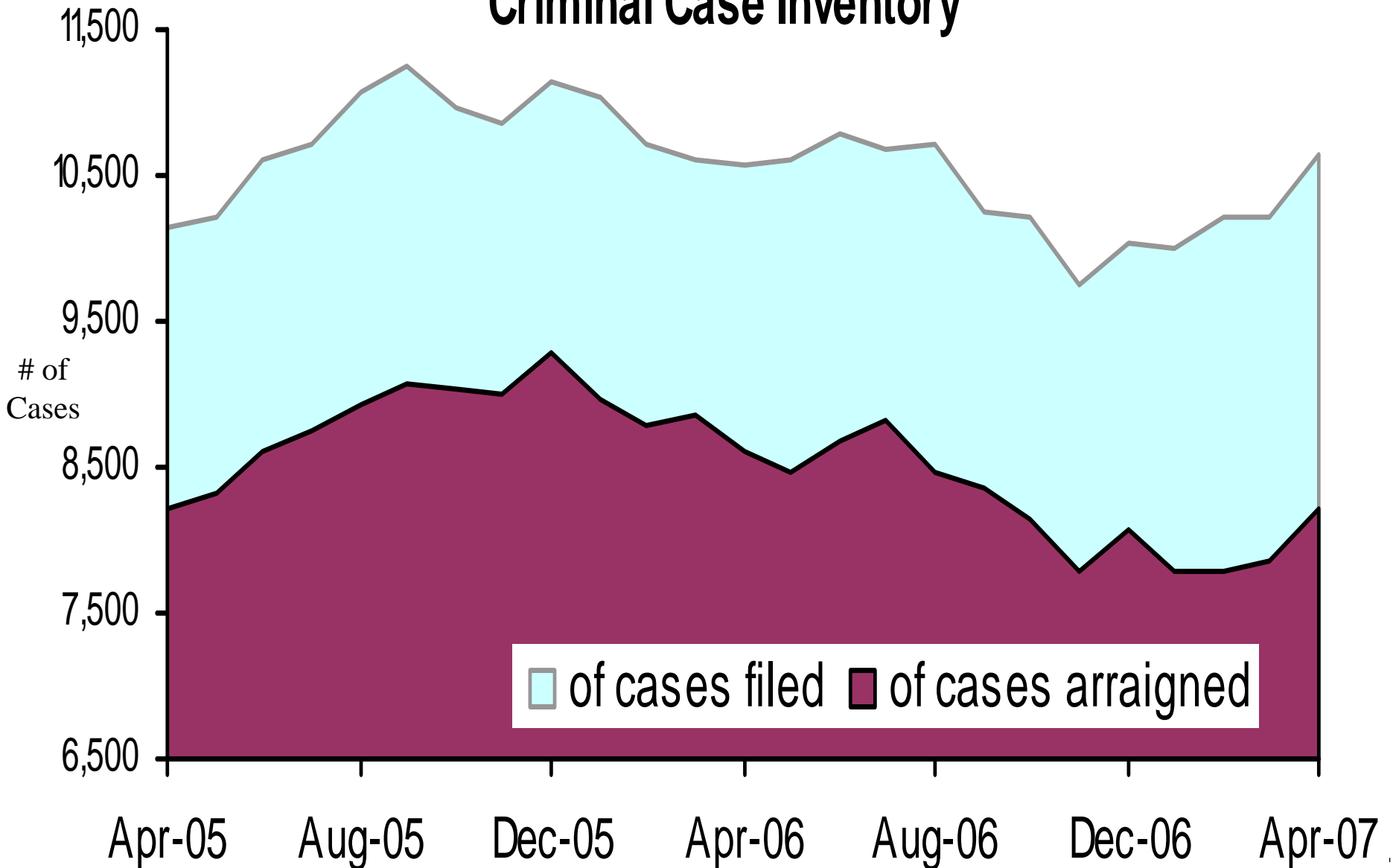


These numbers do not include notices of supervening indictments, non-EDC direct complaints, and juvenile direct complaints.

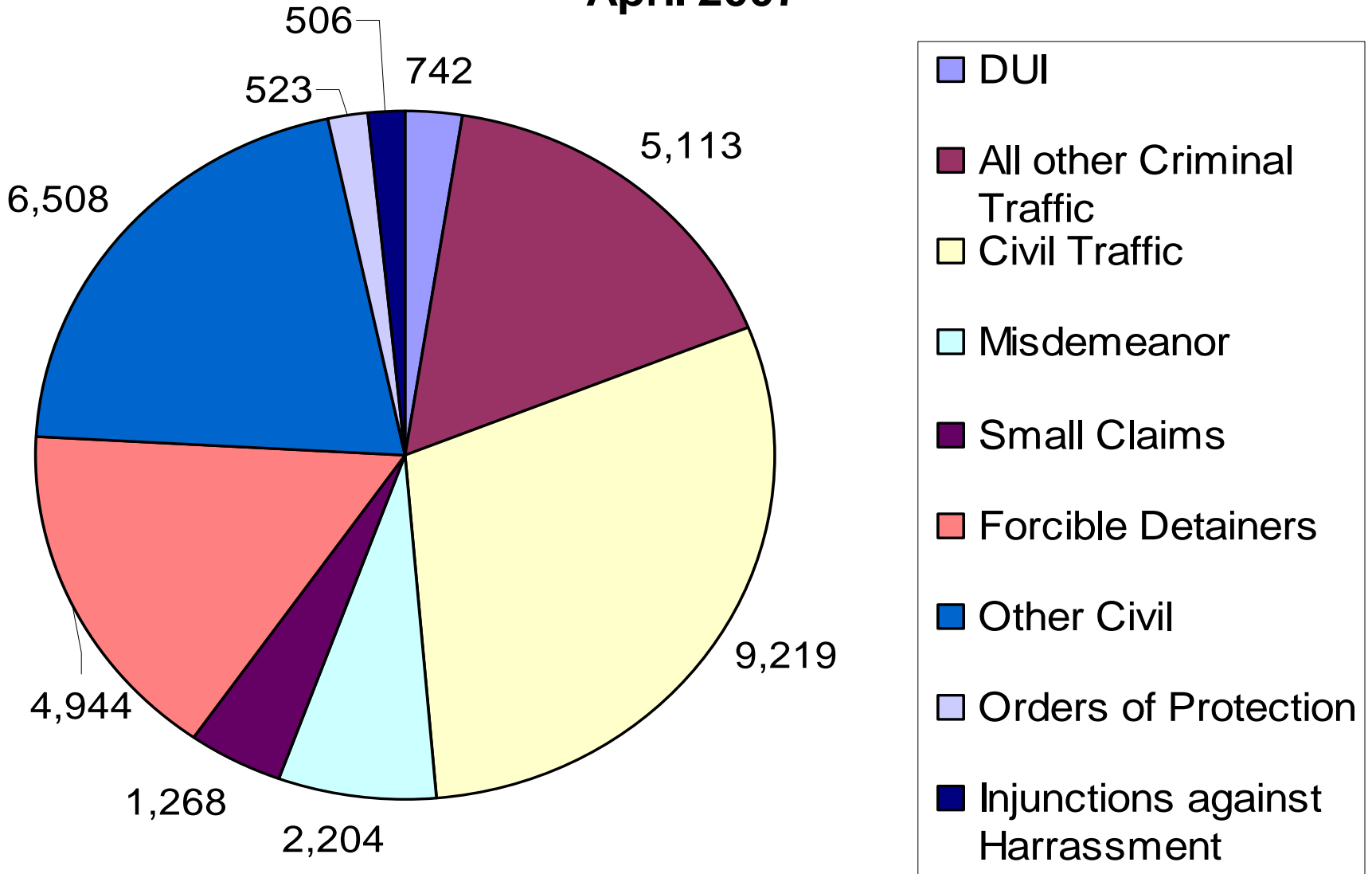
# Superior Court Trials Completed



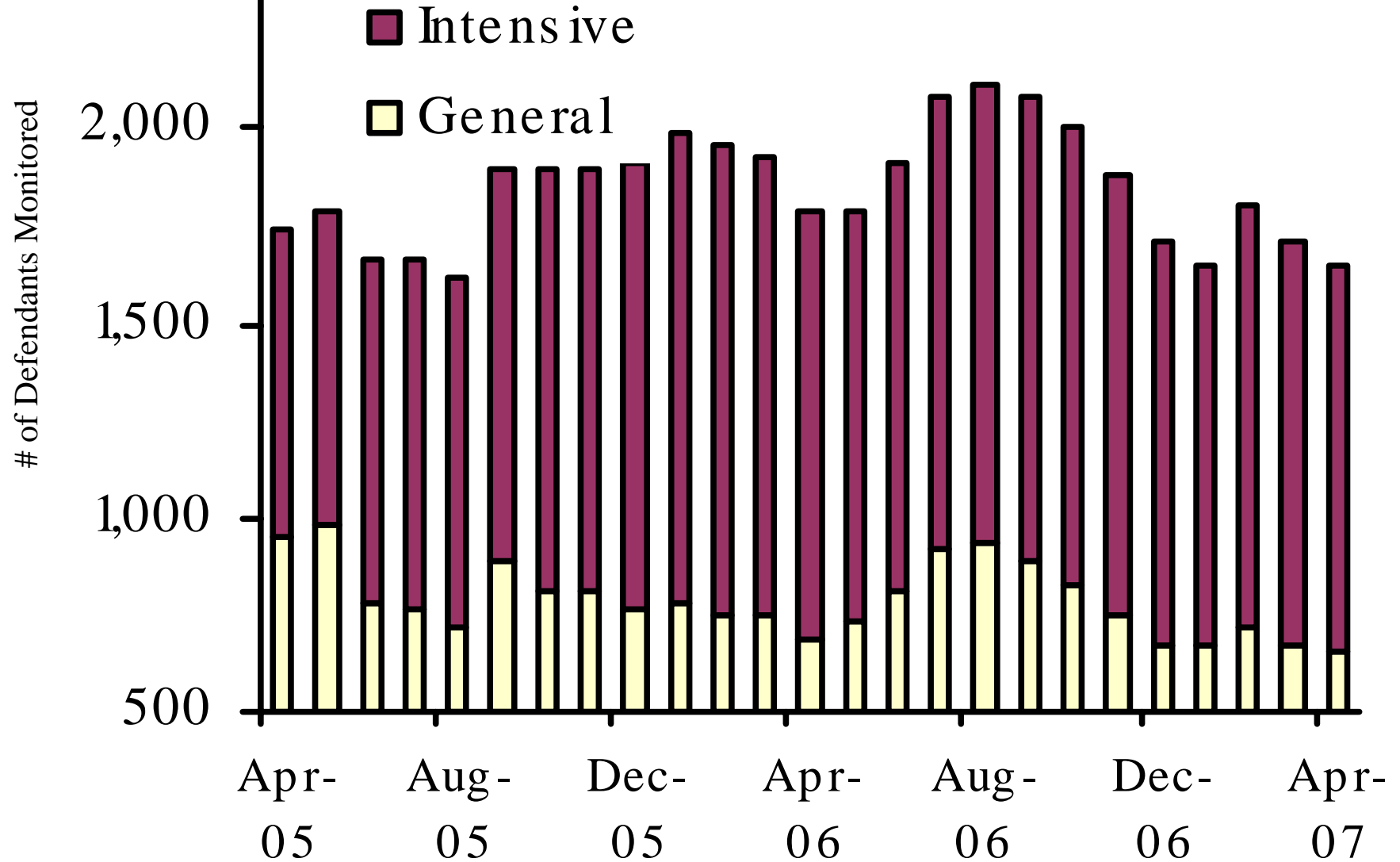
# Active Pending Criminal Case Inventory



# Justice Court Filings April 2007

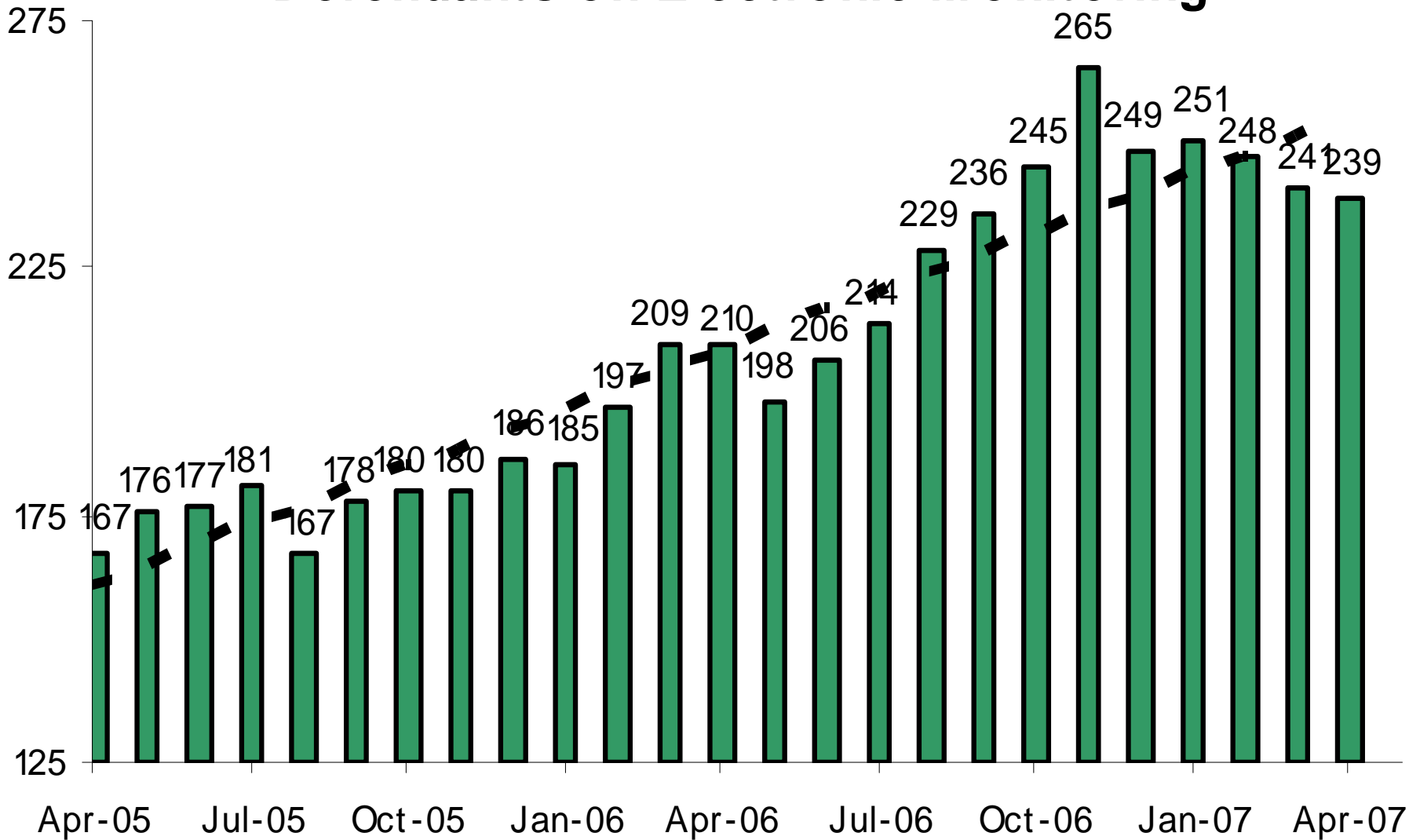


# Pretrial Supervision Defendant Monitoring Unit



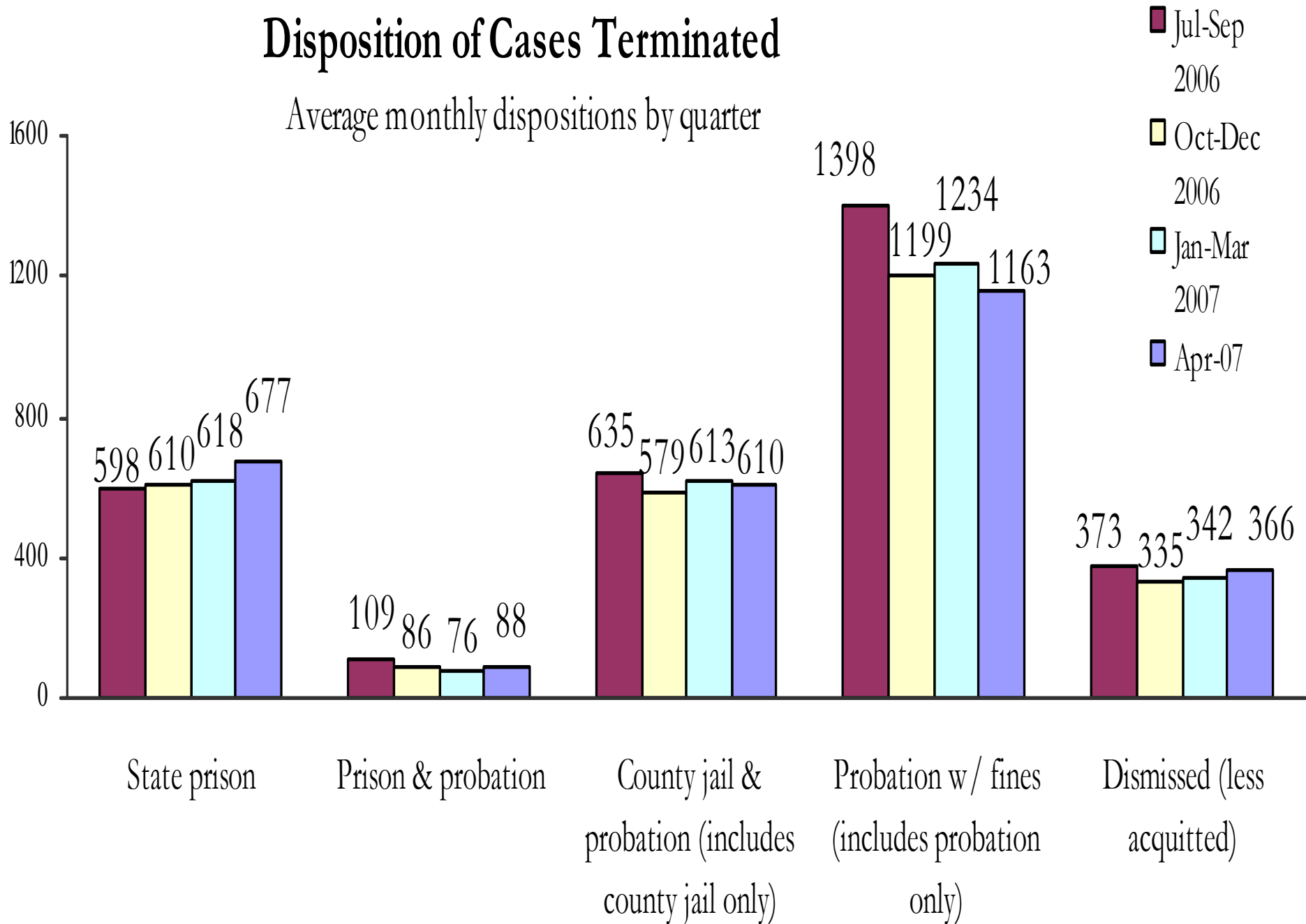


# Pretrial Supervision Defendants on Electronic Monitoring

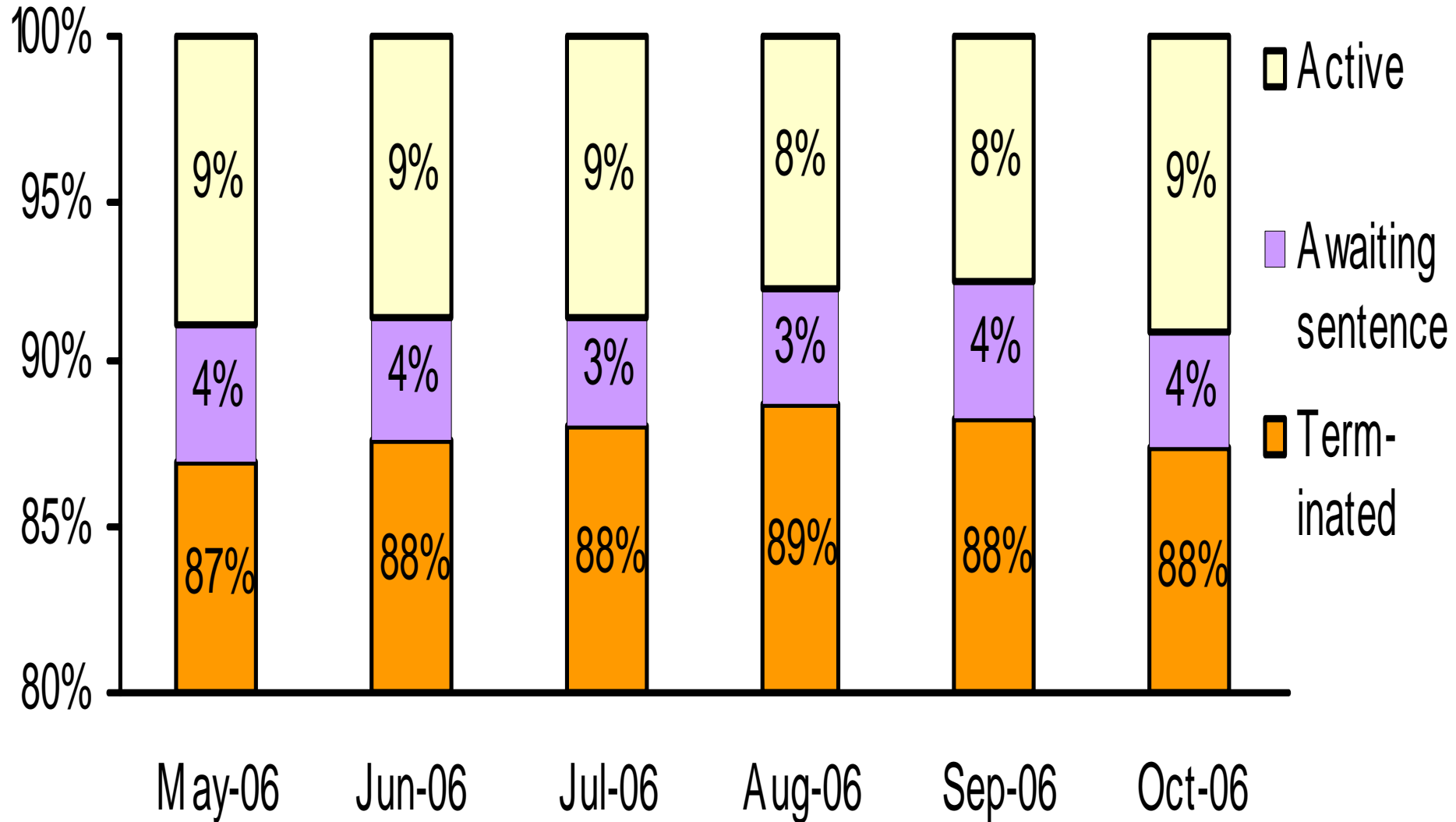


# Disposition of Cases Terminated

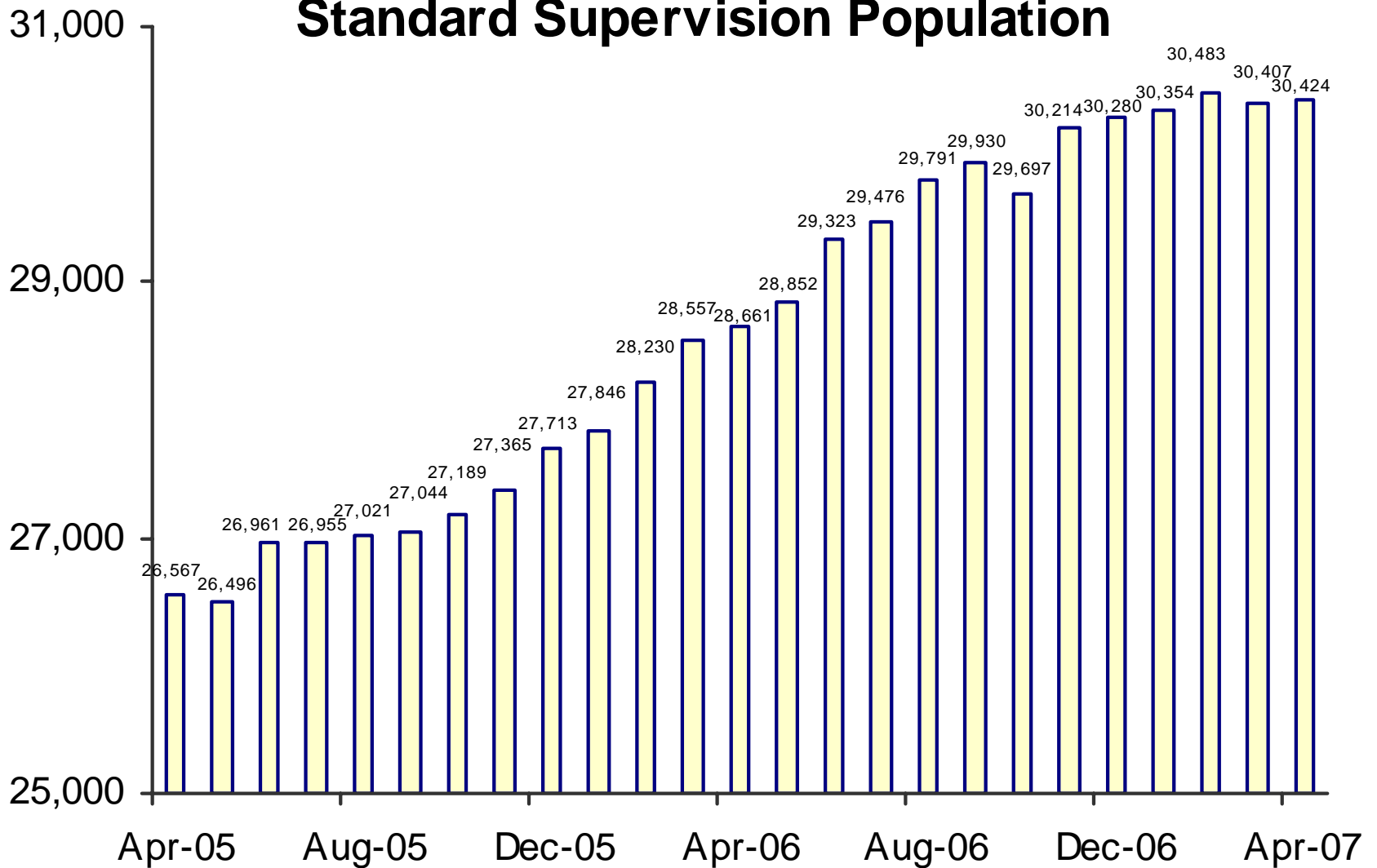
Average monthly dispositions by quarter



# Status of Cases After 180 Days

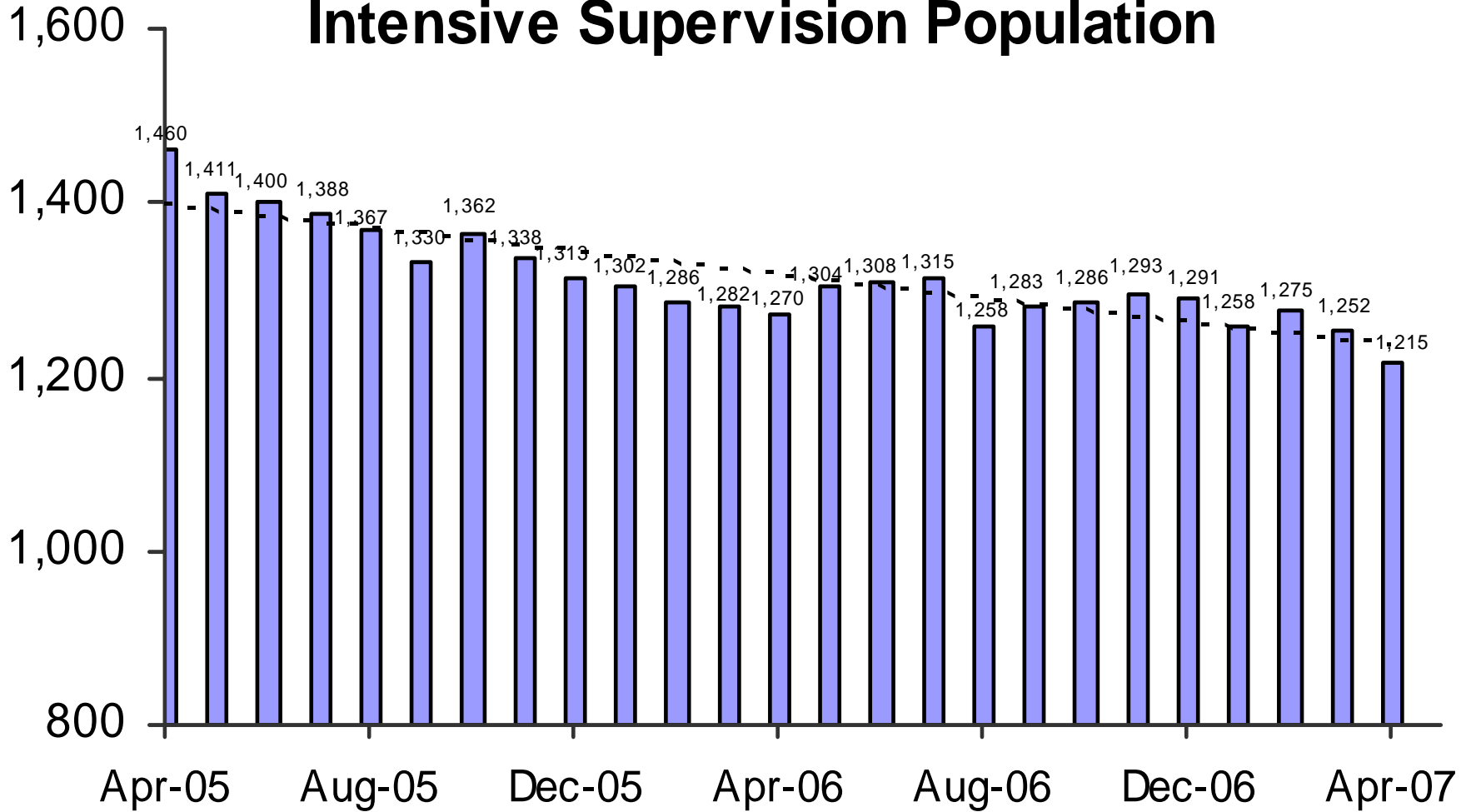


# Adult Probation Standard Supervision Population

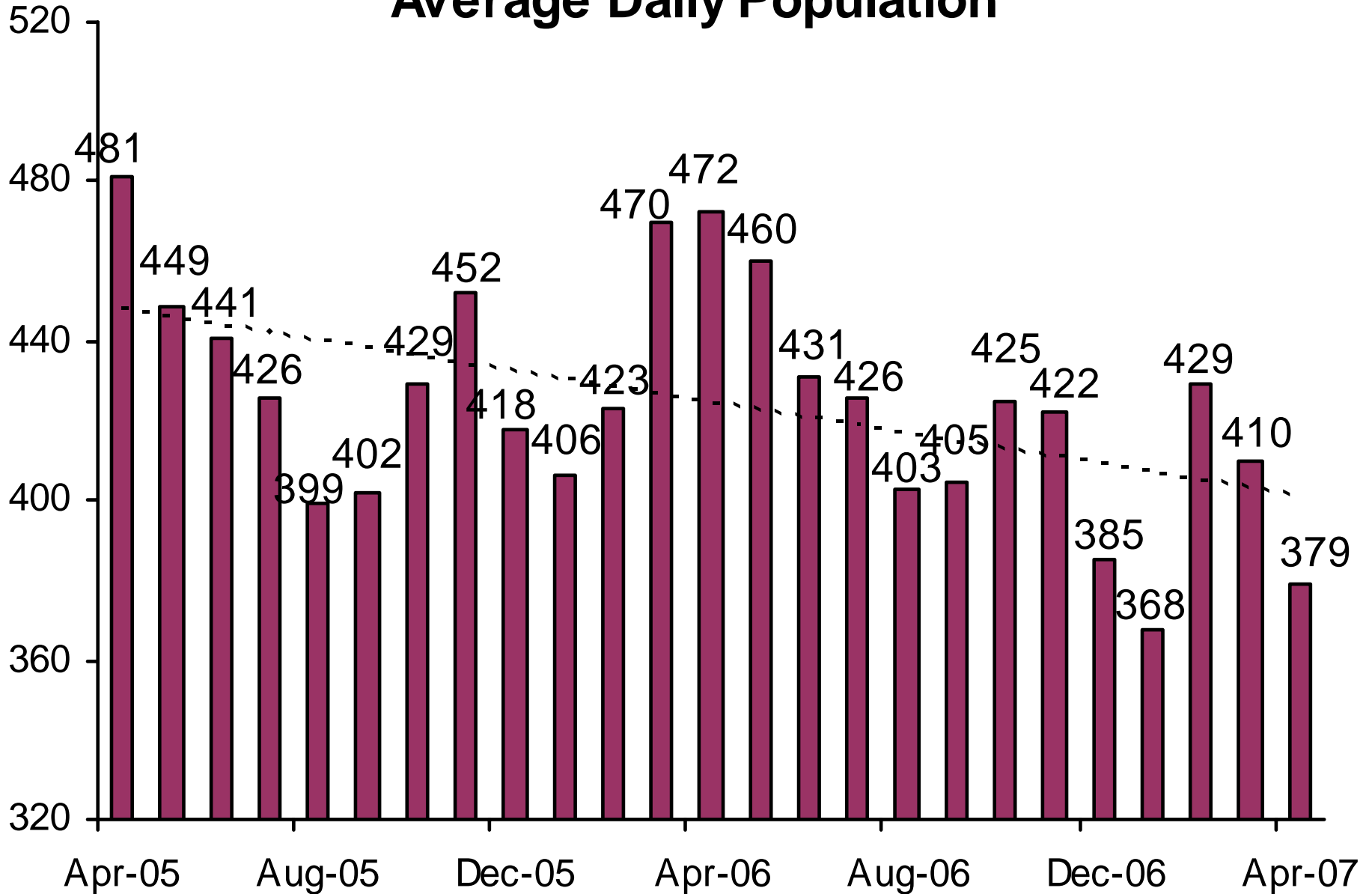


This population includes Interstate Compact and Report and Review caseloads, as reported to the Board of Supervisors and JLBC.

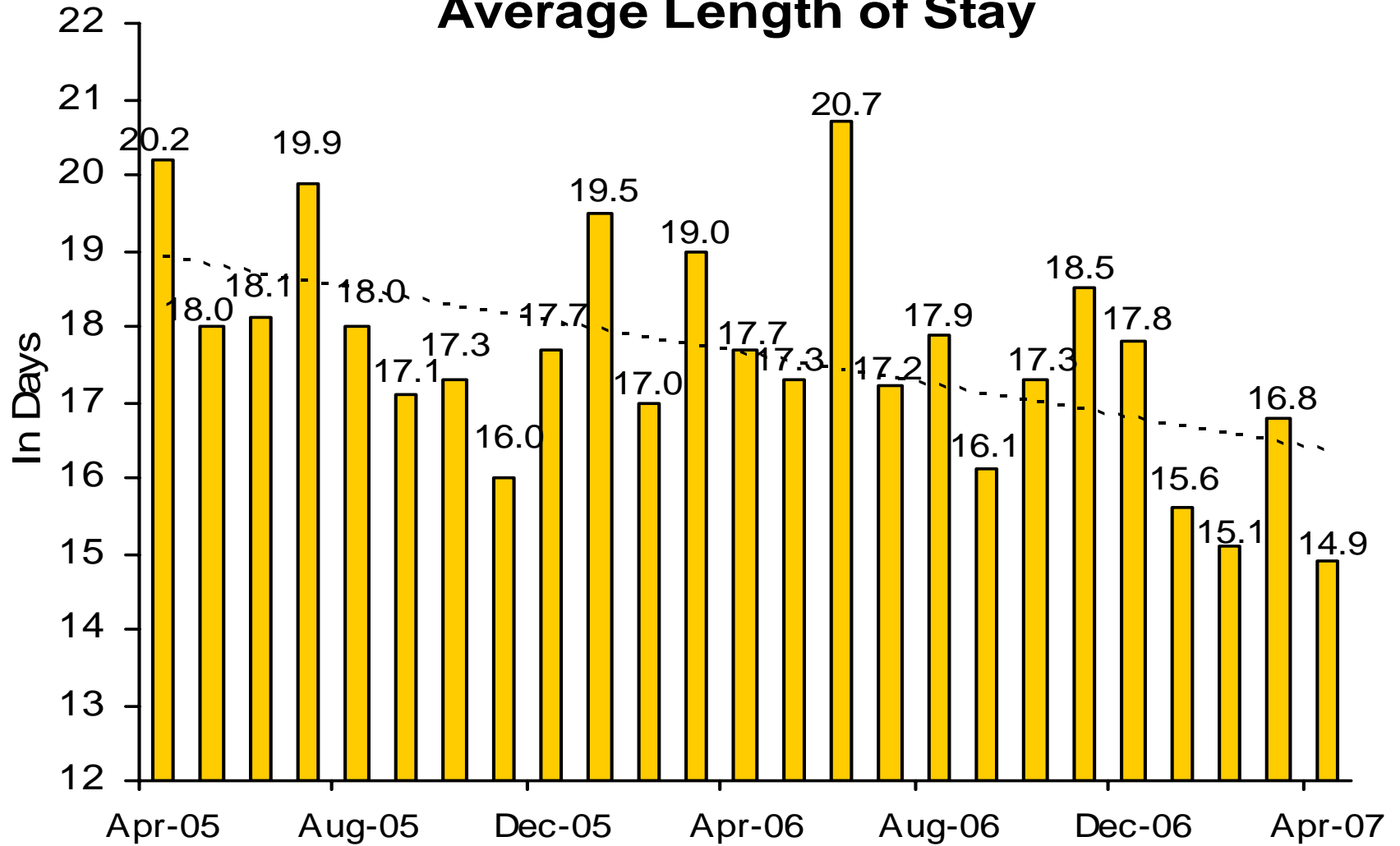
# Adult Probation Intensive Supervision Population



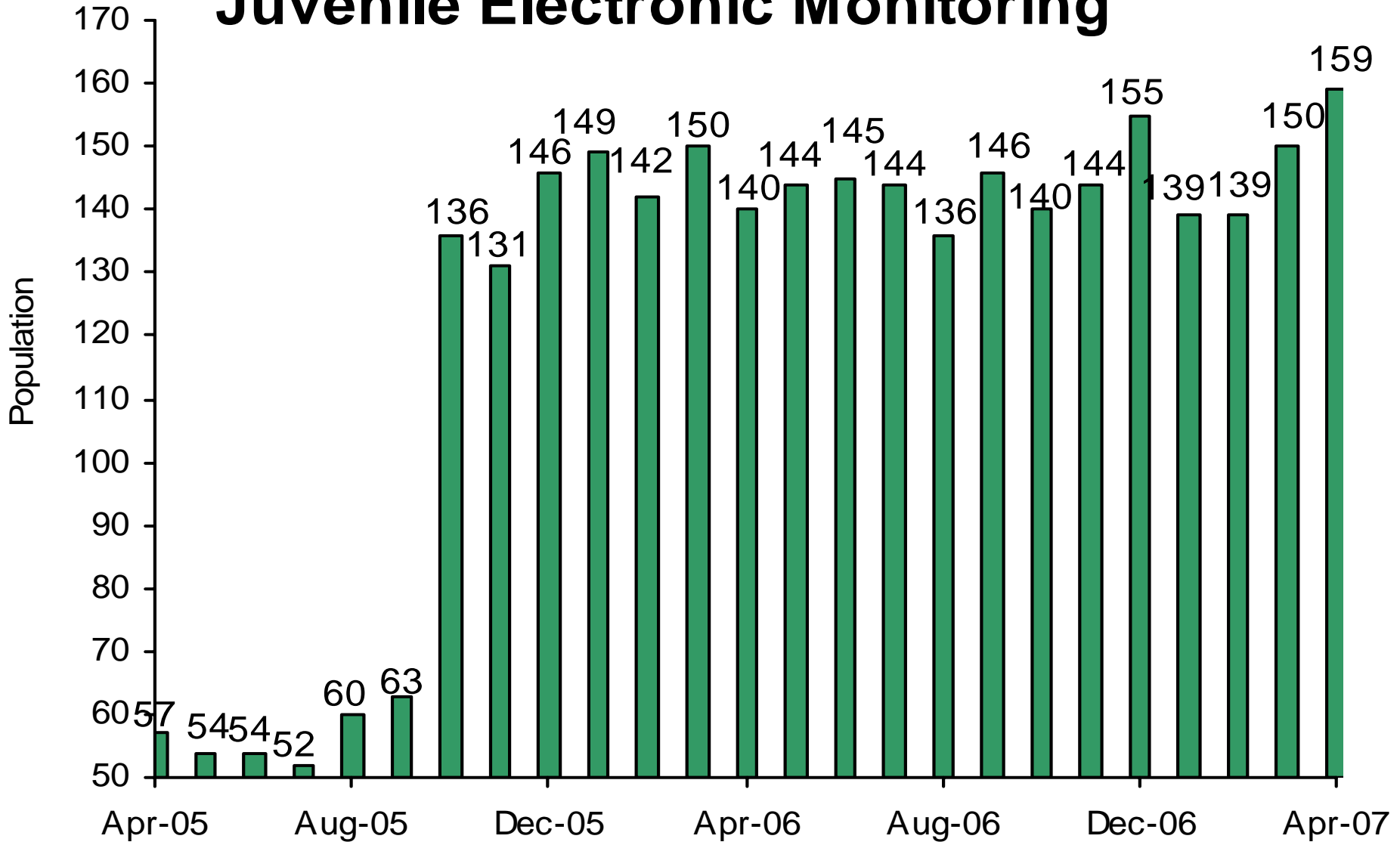
# Juvenile Detention Average Daily Population



# Juvenile Detention Average Length of Stay



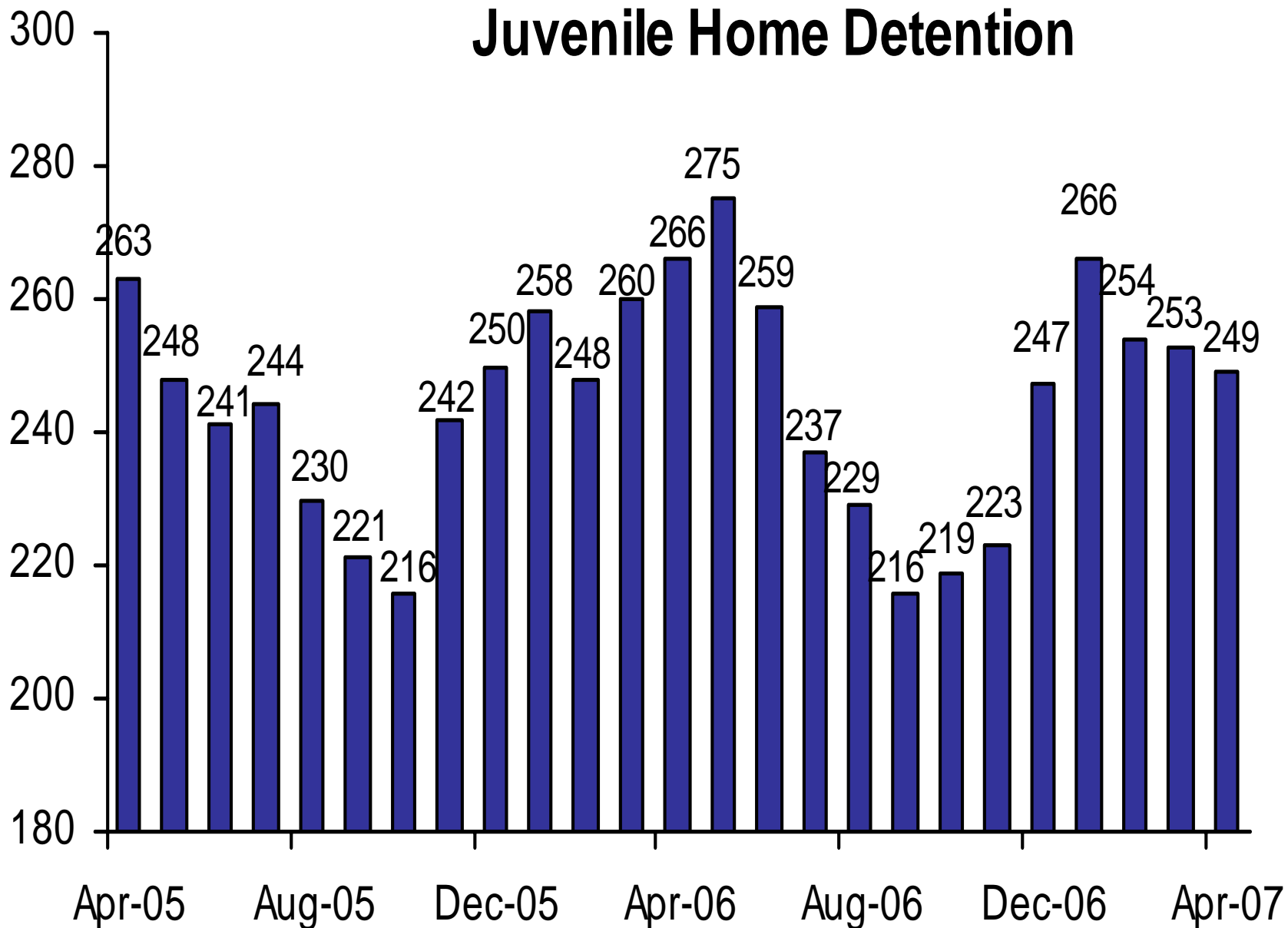
# Juvenile Electronic Monitoring



The increase beginning in October 2005 is due to more accurate data collection, including counting Intensive Probation use in addition to Standard use.



# Juvenile Home Detention



# Juvenile Probation

■ # on standard probation ■ # on intensive probation

