



Maricopa County

Criminal Justice System

Monthly Performance Report for August 2012

	Annual Averages				Year-to-Date Avgs			Current Month		
	FY 2009	FY 2010	FY 2011	FY 2012	FY 2012	FY 2013	% Change	Aug-11	Aug-12	% Change
Sheriff's Office										
Bookings (monthly avg)	10,837	10,039	9,228	8,818	9,203	9,462	3%	9,404	9,490	1%
Releases (monthly avg)	10,901	10,136	9,237	8,766	9,171	9,371	2%	9,253	9,516	3%
Avg Daily Population	9,215	8,055	7,295	7,495	7,363	8,148	11%	7,395	8,224	11%
Avg Length of Stay (in days)	26.4	25.0	24.4	25.0	24.1	23.9	-1%	23.6	24.1	2%
Superior Court										
Filings	3,096	2,878	2,698	2,756	2,798	2,701	-3%	2,948	2,670	-9%
Terminations	3,306	3,241	2,914	2,749	2,888	2,580	-11%	3,095	2,698	-13%
Clearance Rate	107%	113%	108%	100%	103%	96%		105%	101%	
Active Pending Inventory	11,606	11,342	10,124	10,902	10,368	11,731	13%	10,378	11,695	13%
Trials Completed	79	62	48	48	52	38	-27%	58	37	-36%
Trial Rate	2.6%	2.2%	1.8%	1.7%	1.9%	1.4%		2.0%	1.4%	
Justice Courts Filings										
DUI	952	895	841	751	781	834	7%	762	834	9%
All other Criminal Traffic	5,316	4,243	3,685	3,483	3,565	3,799	7%	3,839	3,964	3%
Civil Traffic	12,616	11,563	10,856	10,201	10,871	11,549	6%	11,475	11,619	1%
Misdemeanor	1,984	1,693	1,631	1,689	2,069	1,946	-6%	2,109	1,849	-12%
Small Claims	1,307	1,403	1,154	941	996	896	-10%	1,132	906	-20%
Eviction Actions	6,005	5,232	5,253	5,337	6,070	6,163	2%	6,136	6,239	2%
Other Civil	6,944	7,274	7,628	6,479	6,765	6,281	-7%	7,420	6,931	-7%
Orders of Protection	299	321	344	334	418	353	-16%	448	389	-13%
Injunctions against Harassment	311	273	265	251	282	240	-15%	309	251	-19%
Adult Probation										
Pretrial Standard Supervision*	1,749	1,419	1,459	1,825	1,644	2,020	23%	1,647	2,014	22%
Pretrial Electronic Monitoring	263	229	201	314	227	445	96%	229	445	94%
Standard Probation Supervision	26,093	23,117	21,750	21,658	21,626	22,051	2%	21,663	22,369	3%
Intensive Probation Supervision	968	813	798	732	757	697	-8%	742	691	-7%
Unsupervised Probation Supervision	3,802	7,166	8,528	8,215	8,317	7,694	-7%	8,258	7,663	-7%
Juvenile Detention and Probation										
Avg Daily Detention Pop	285	258	234	231	216	222	3%	218	216	-1%
Avg Length of Stay (in days)	13.1	12.9	13.7	13.1	12	16.2	35%	12	15.0	25%
Standard Probation	4,325	4,047	3,509	2,792	3,112	2,490	-20%	3,104	2,497	-20%
Intensive Probation	459	383	324	283	294	235	-20%	303	234	-23%

*As of January 2012, all previously designated Pretrial General and Intensive Supervision cases are reported under the Standard category in response to use of a validated risk assessment tool that provides stratified levels of supervision.



Maricopa County

Criminal Justice System

CRIMINAL JUSTICE SYSTEM Monthly Changes – August 2012

Adult Jail Incarceration

- **Bookings increased** from 9,434 in July to 9,490 in August.
- The **Average Daily Population increased** from 8,072 in July to 8,224 in August.
- The **Pretrial Population increased** from 6,048 in July to 6,230 in August.
- The **Sentenced Population decreased** from 1,811 in July to 1,769 in August.
- The **Agency Hold Population increased** from 166 in July to 176 in August.
- **Overall Average Length of Stay (ALOS) increased** from 23.7 in July to 24.1 in August.
- The **ALOS for Pretrial decreased** from 7.2 in July to 6.6 in August.
- The **ALOS for Sentenced decreased** from 25.7 in July to 23.9 in August.
- The **ALOS for Agency Holds increased** from 62.1 in July to 65 in August.

Superior Court Filings & Case Processing

- **New Criminal Case Filings decreased** from 2,731 in July to 2,670 in August.
- **Case Terminations increased** from 2,462 in July to 2,698 in August.
- The resulting **Clearance Rate** was 101%.
- The **Active Pending Case Inventory decreased** from 11,767 in July to 11,695 in August.
- **Filings into Regional Court Center increased** from 1,636 in July to 1,686 in August.
- **Filings into Early Disposition Court decreased** from 839 in July to 740 in August.
- The **Number of Trials Completed decreased** from 38 in July to 37 in August.
- The **Trial Rate** was 1.4%.

Justice Court Filings

- **DUI Filings stayed the same** with 834 in July and August.
- All other **Criminal Traffic Filings increased** from 3,633 in July to 3,964 in August.
- **Civil Traffic Filings increased** from 11,478 in July to 11,619 in August.
- **Eviction Action Filings increased** from 6,086 in July to 6,239 in August.
- **Overall Filings increased** from 31,135 in July to 32,982 in August.

Adult Probation

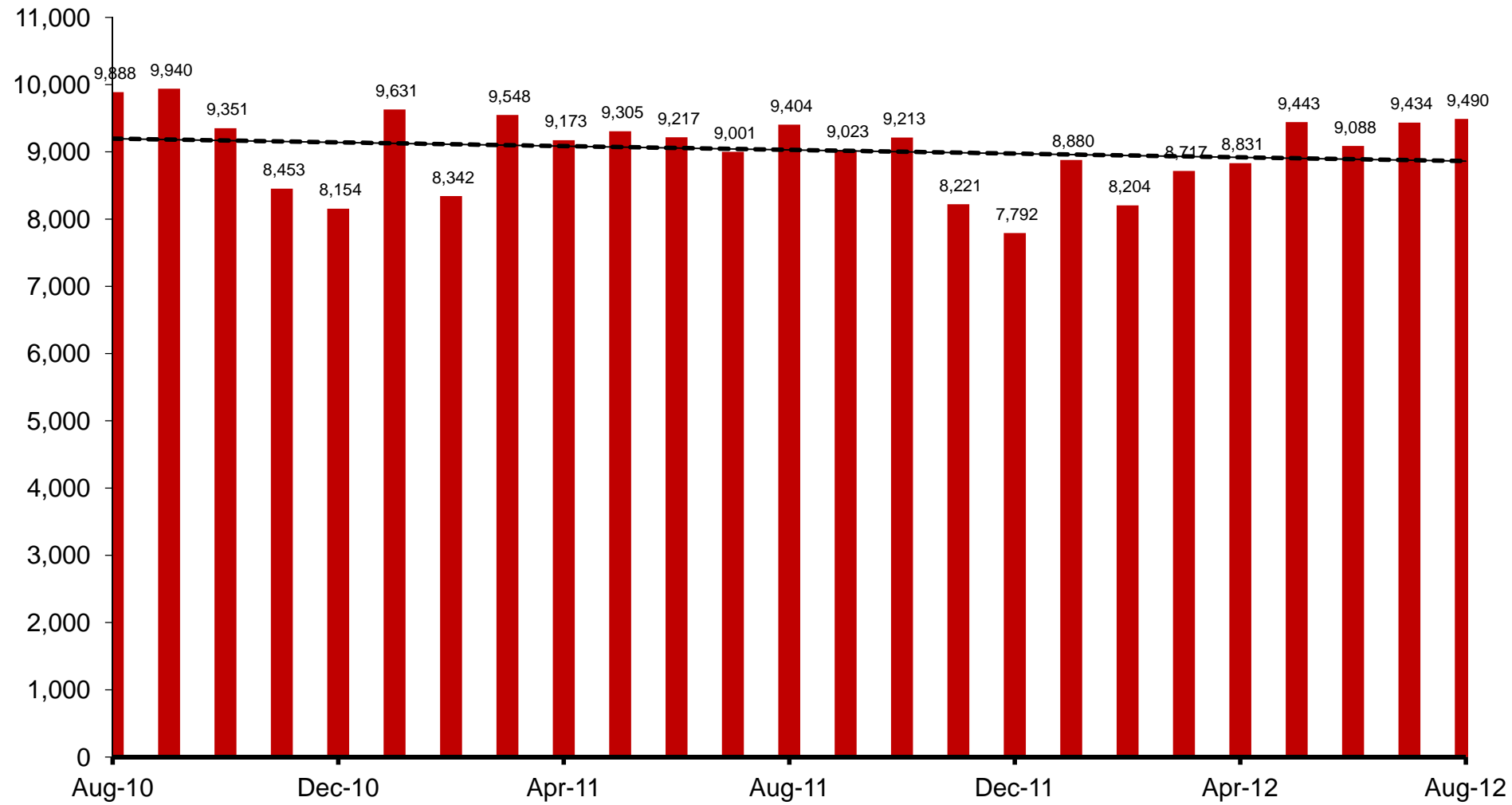
- **Pretrial Standard Supervision decreased** from 2,026 in July to 2,014 in August.
- **Electronic Monitoring increased slightly** from 444 in July to 445 in August.
- **Adult Standard Probation Supervision increased** from 21,733 in July to 22,369 in August.
- **Adult Intensive Probation Supervision decreased** from 702 in July to 691 in August.
- **Adult Unsupervised Probation Supervision decreased** from 7,725 in July to 7,663 in August.

Juvenile Detention and Probation

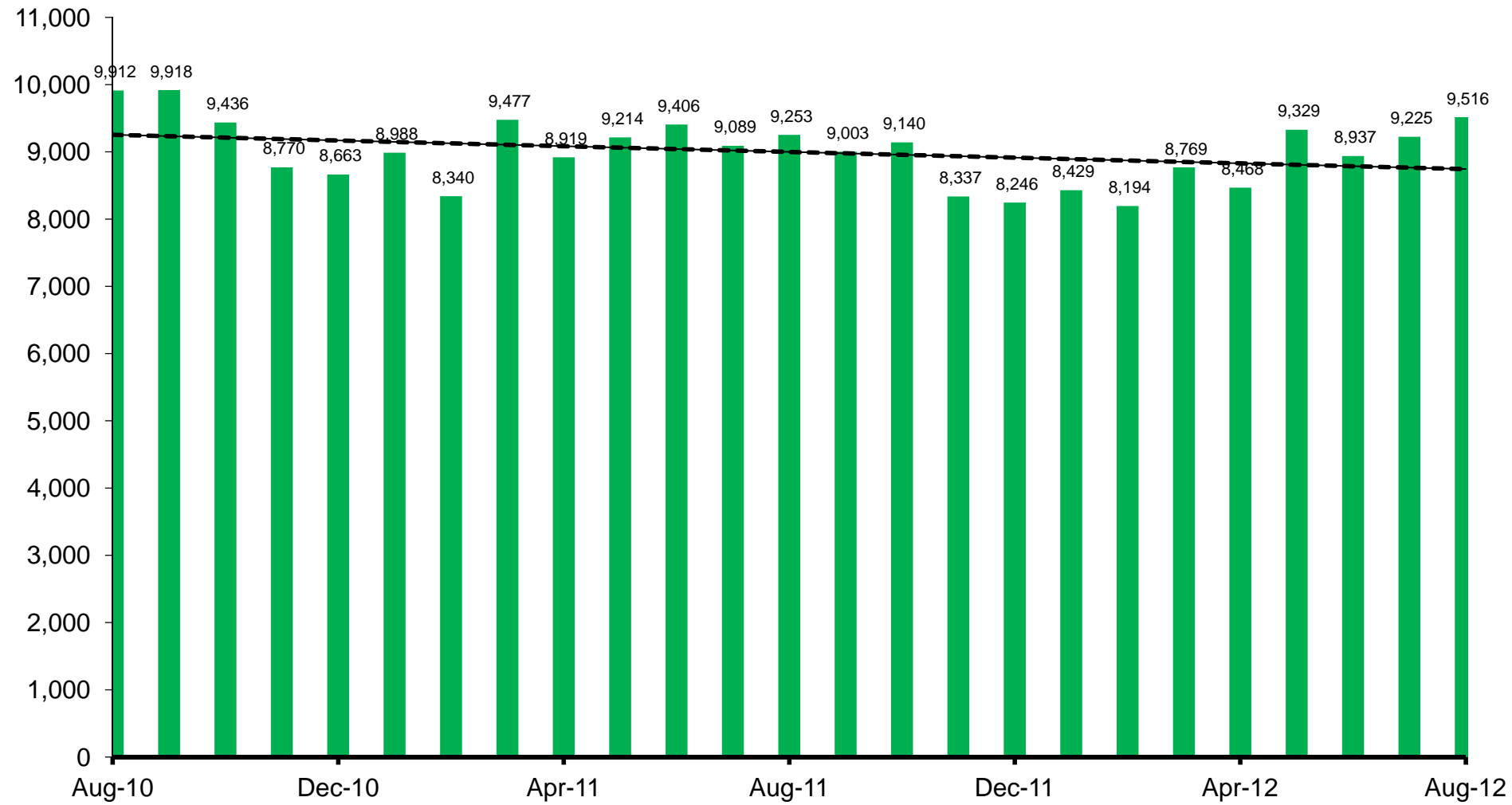
- The **Average Daily Detention Population increased** from 213 in July to 218 in August.
- **ALOS in juvenile detention decreased** from 17.3 in July to 15 in August.
- **Juvenile Standard Probation increased** from 2,482 in July to 2,497 in August.
- **Juvenile Intensive Probation decreased** from 236 in July to 234 in August.
- **Monthly commitments to Arizona Department of Juvenile Corrections increased** from 31 in July to 36 in August.

A criminal justice system-wide goal is to enhance the utility and timeliness of management information on case processing, in an effort to help agencies effectively address current events. **Input from readers is welcomed.** Please contact Erin Herberman at herberman@mail.maricopa.gov or (602) 506-1417.

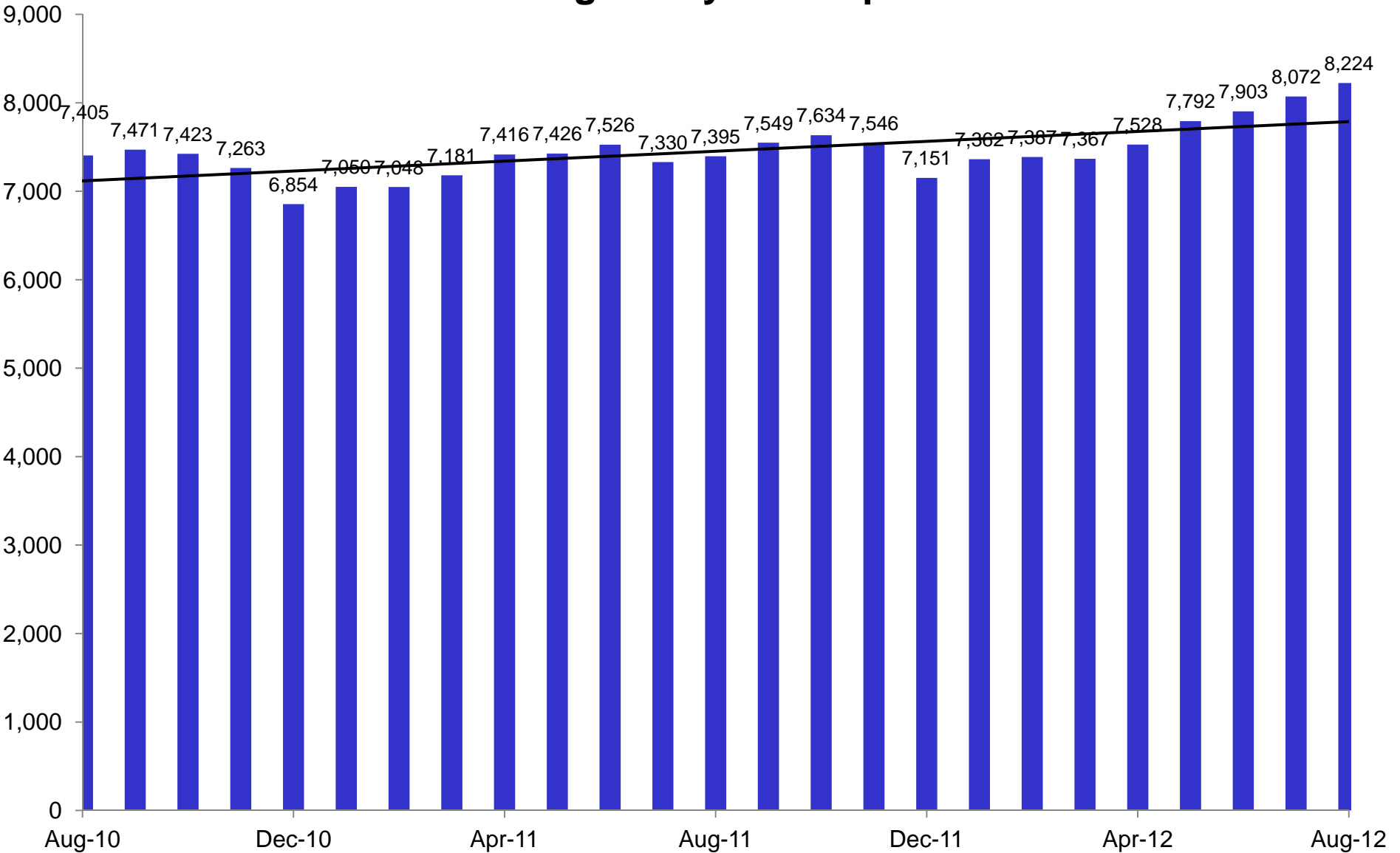
Jail Bookings



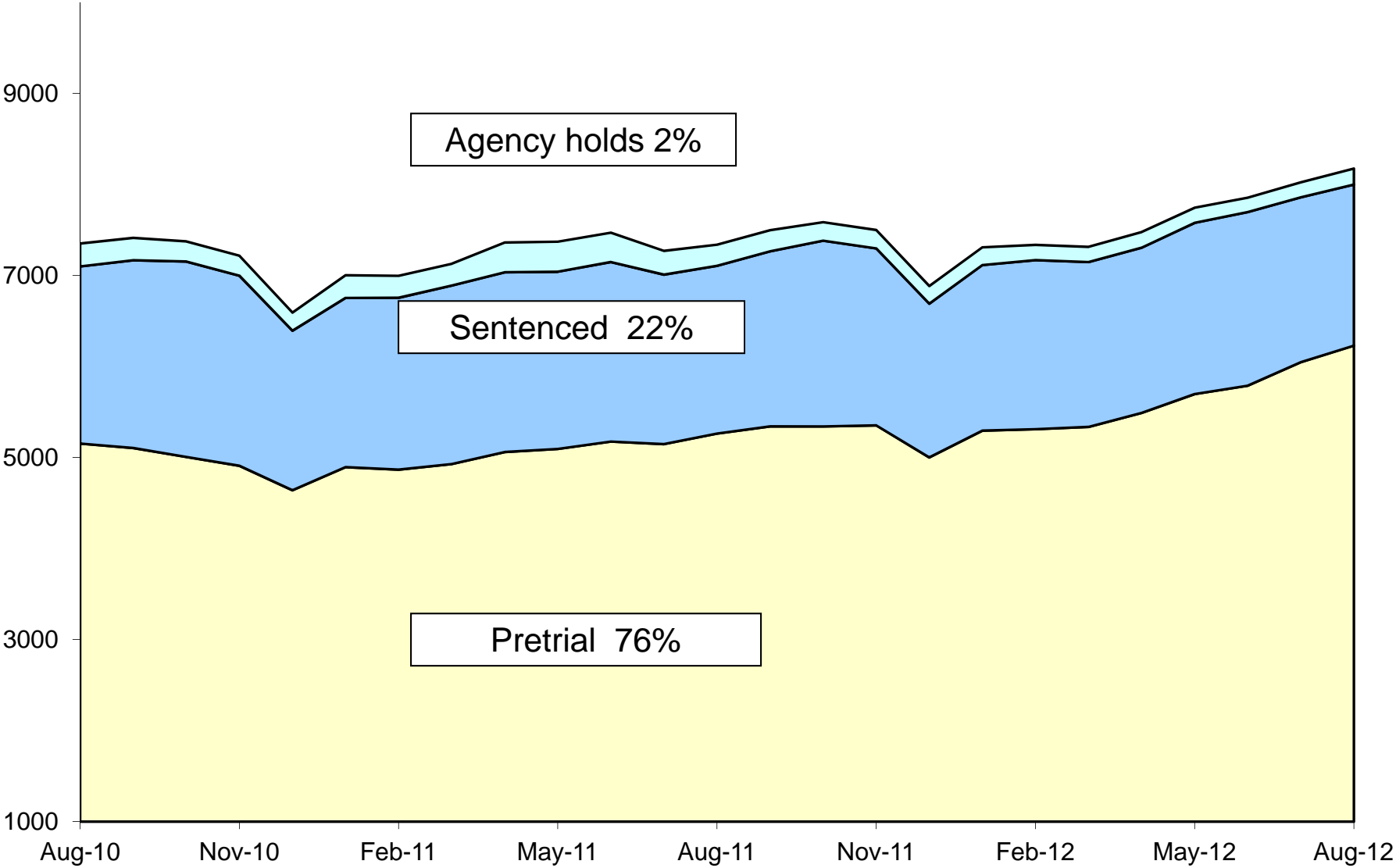
Jail Releases



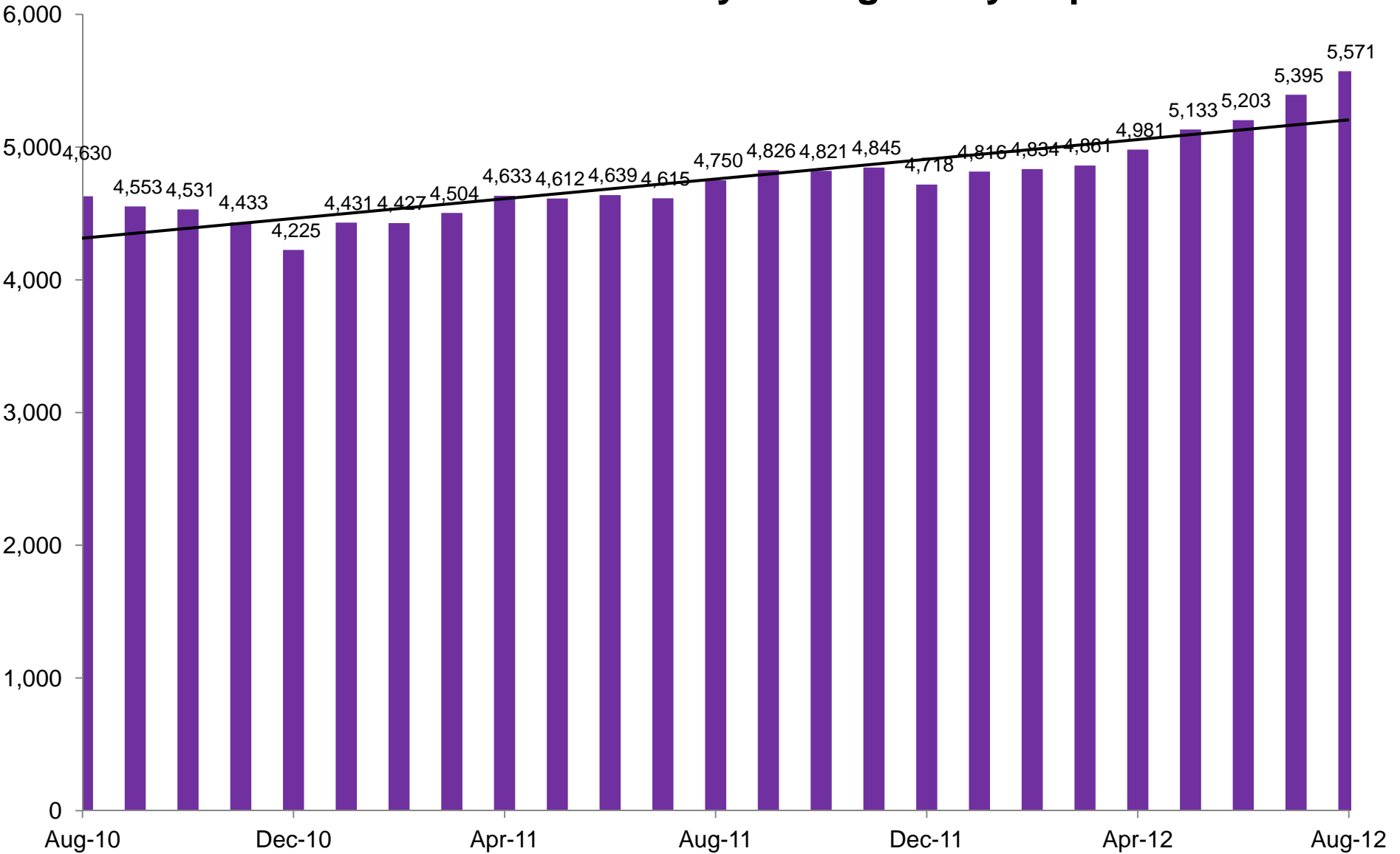
Average Daily Jail Population



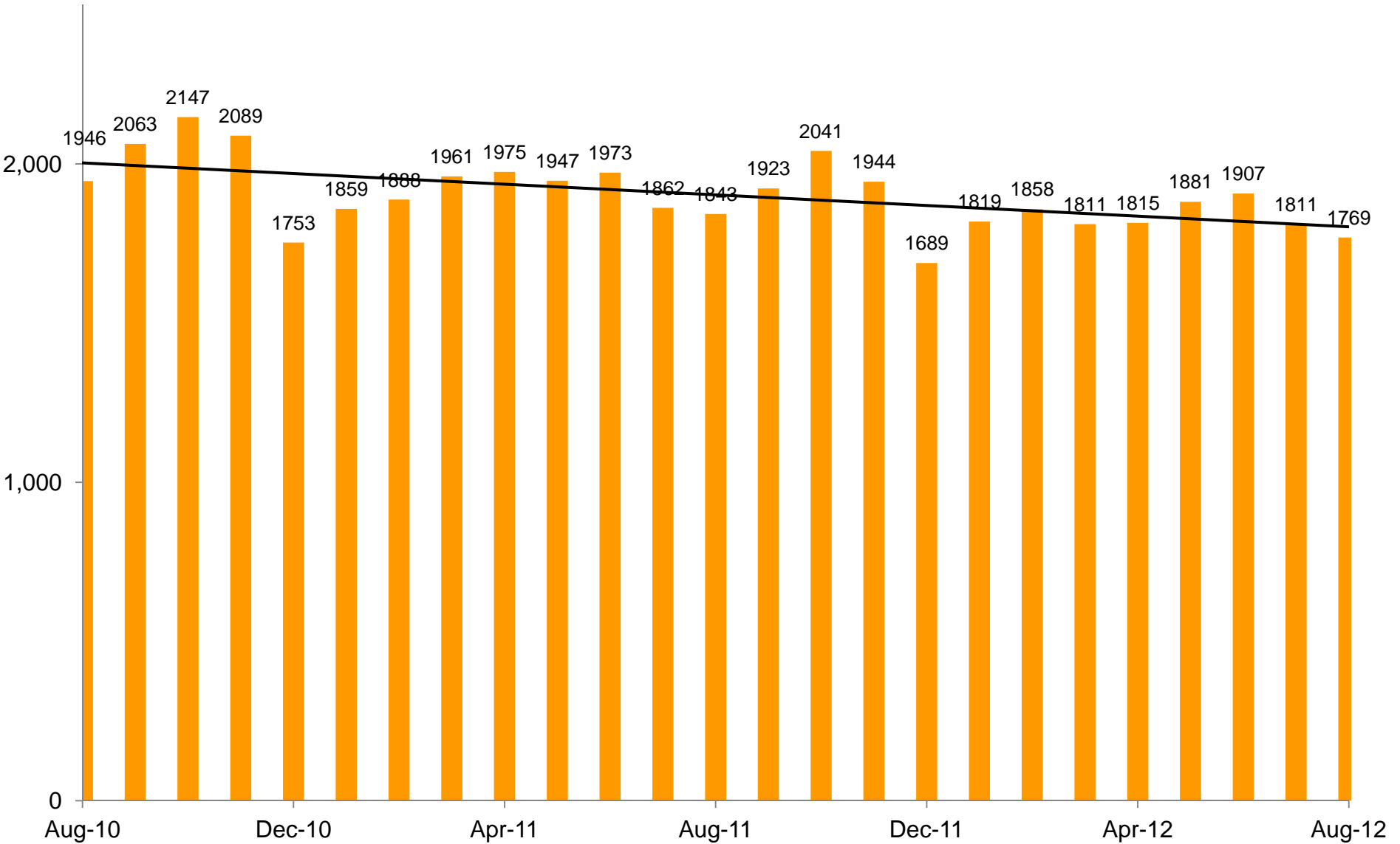
Average Daily Jail Population by Type



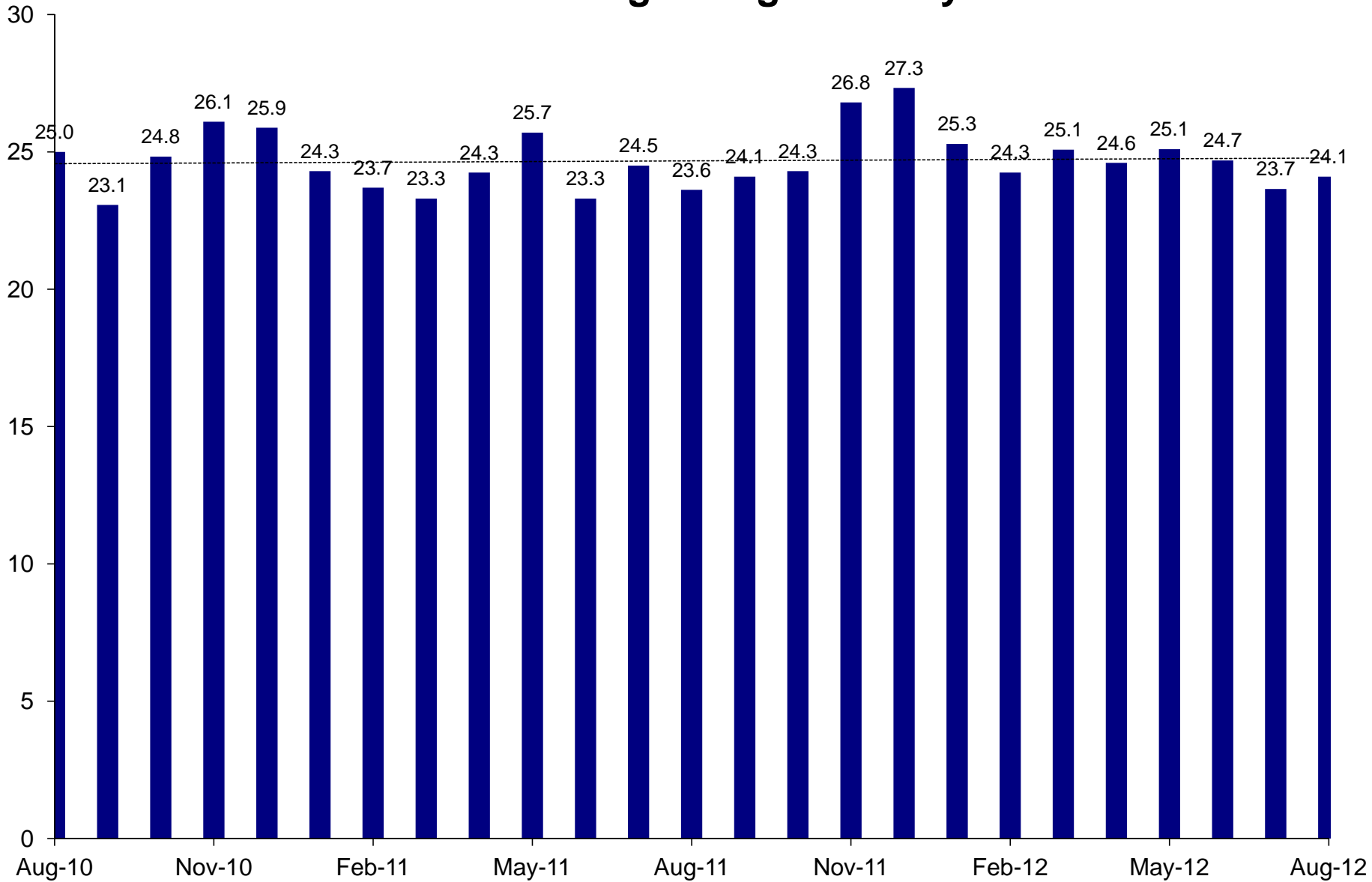
Pretrial Felony Average Daily Population



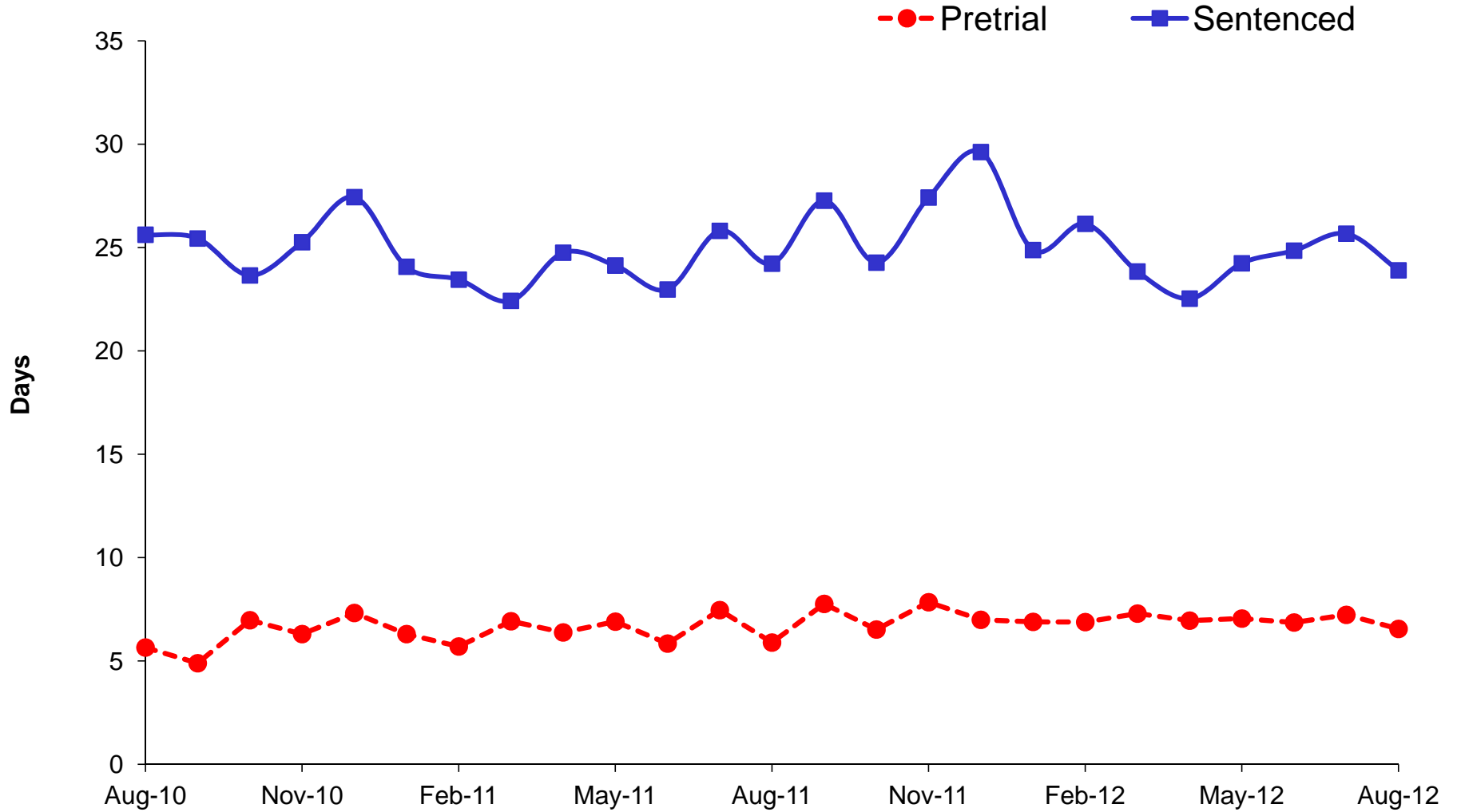
Sentenced Average Daily Population



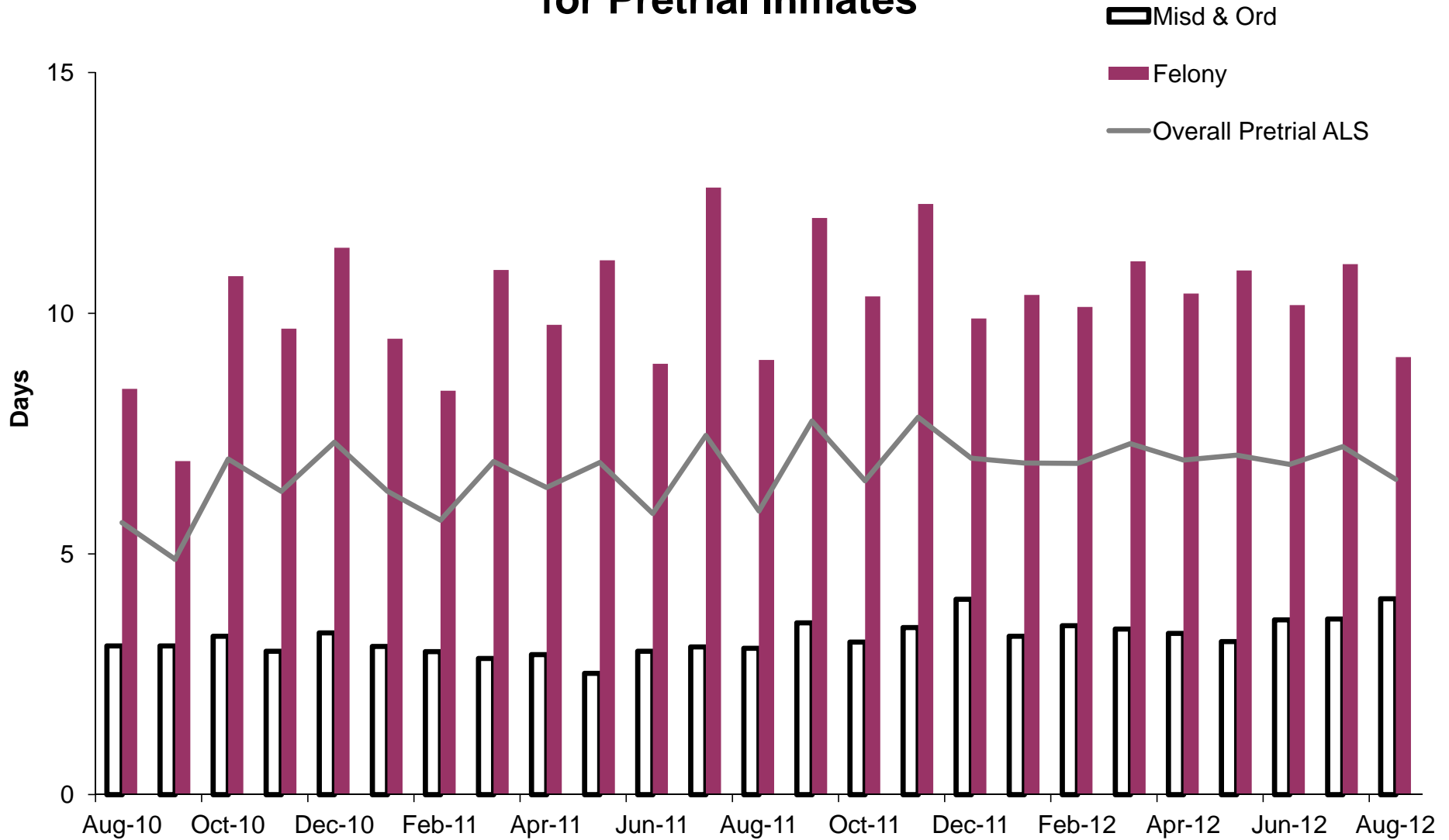
Overall Average Length of Stay in Jail



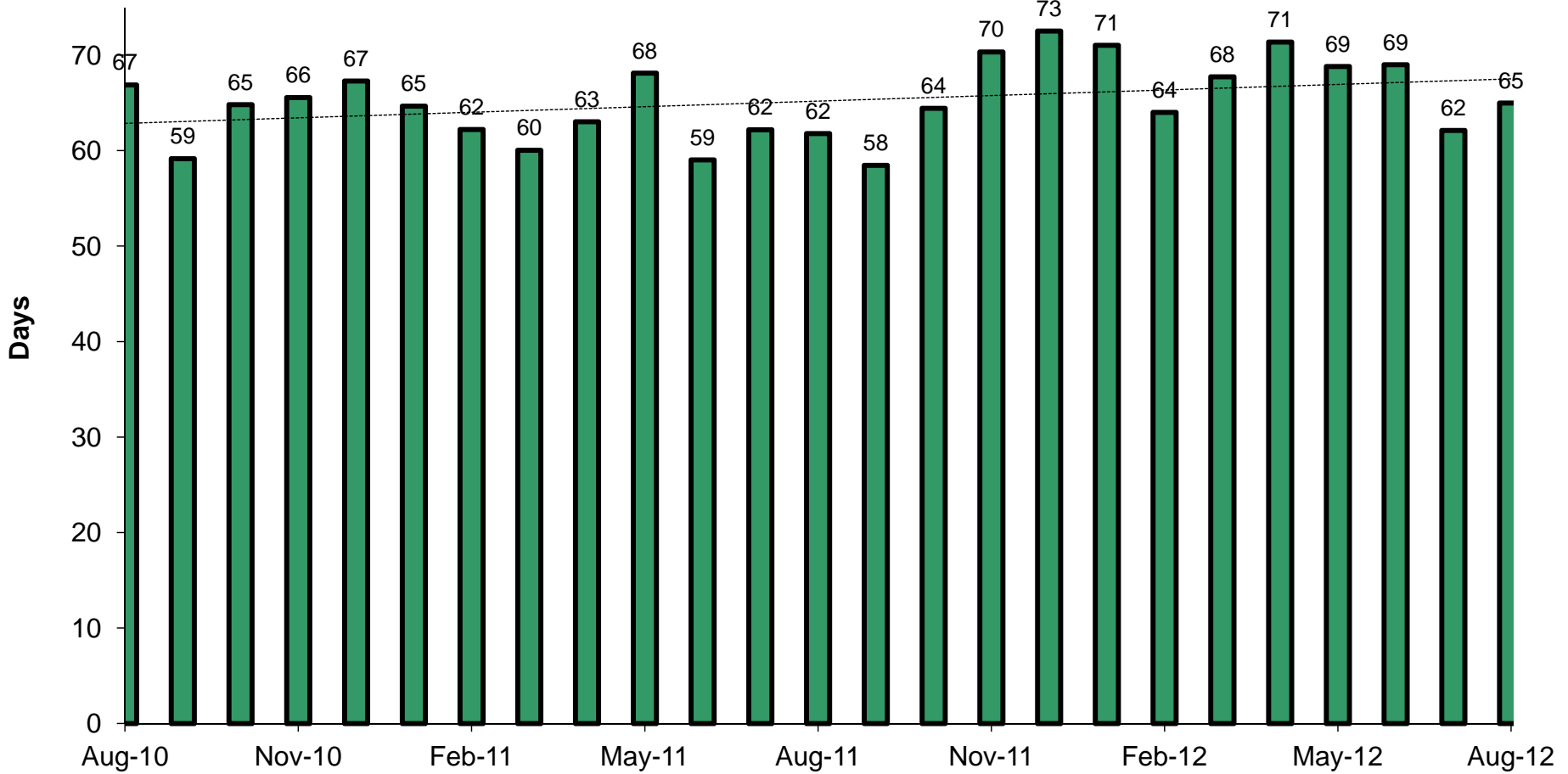
Average Length of Stay in Jail Pretrial vs Sentenced Population



Average Length of Stay in Jail for Pretrial Inmates

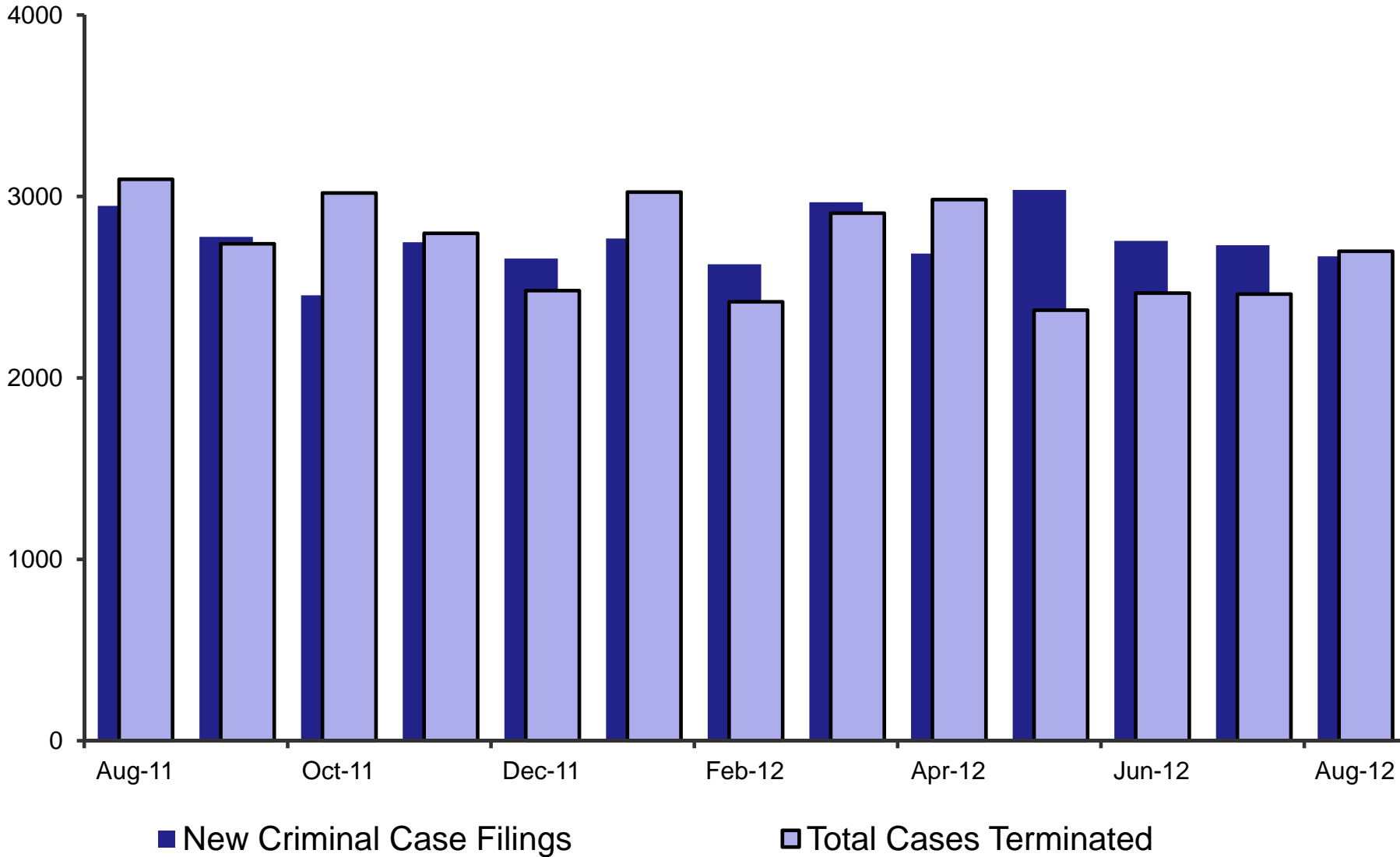


Average Length of Stay in Jail for Agency Holds



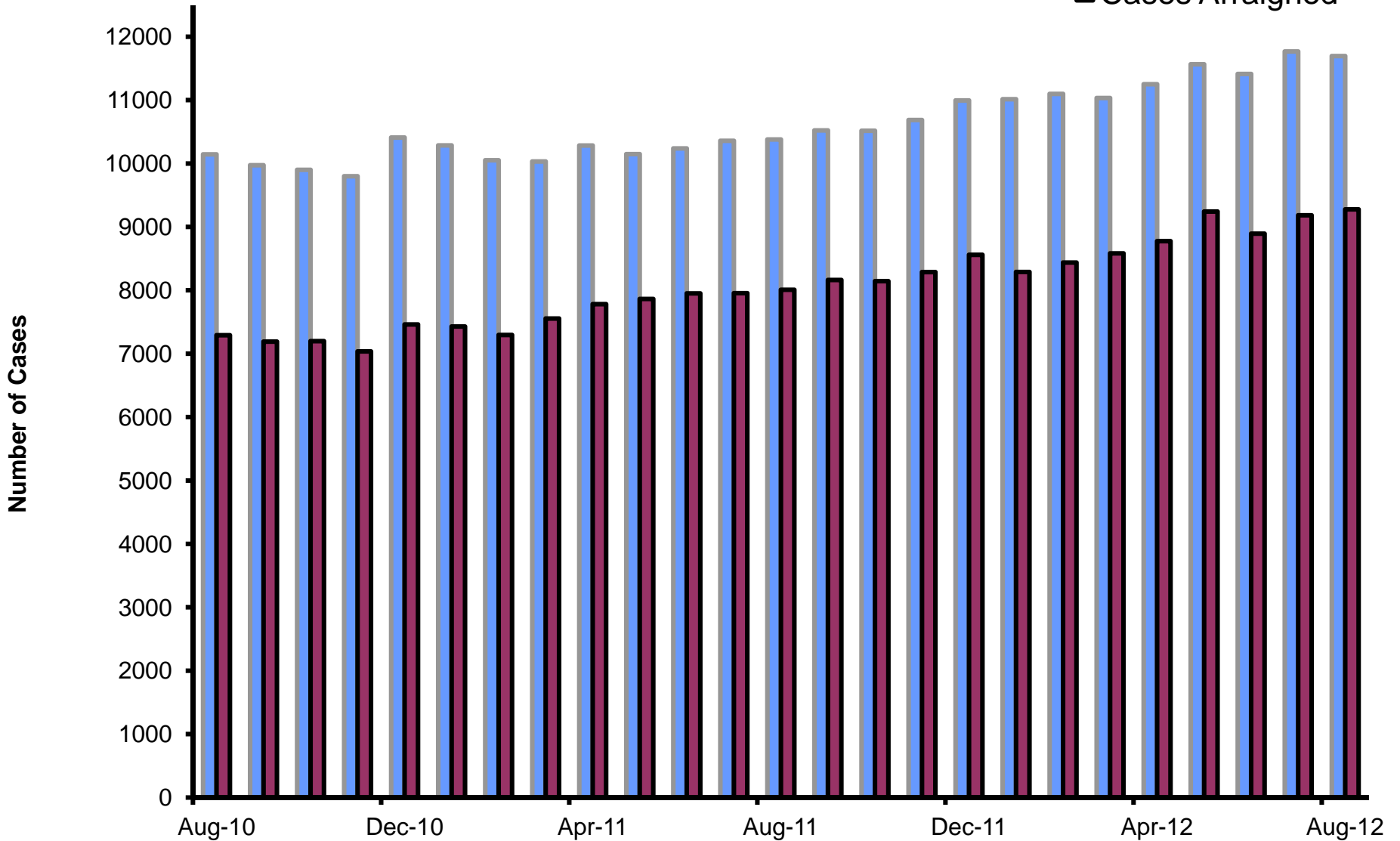
60% Dept of Corrections, 12% Federal agencies, 28% other

Superior Court Filings and Terminations

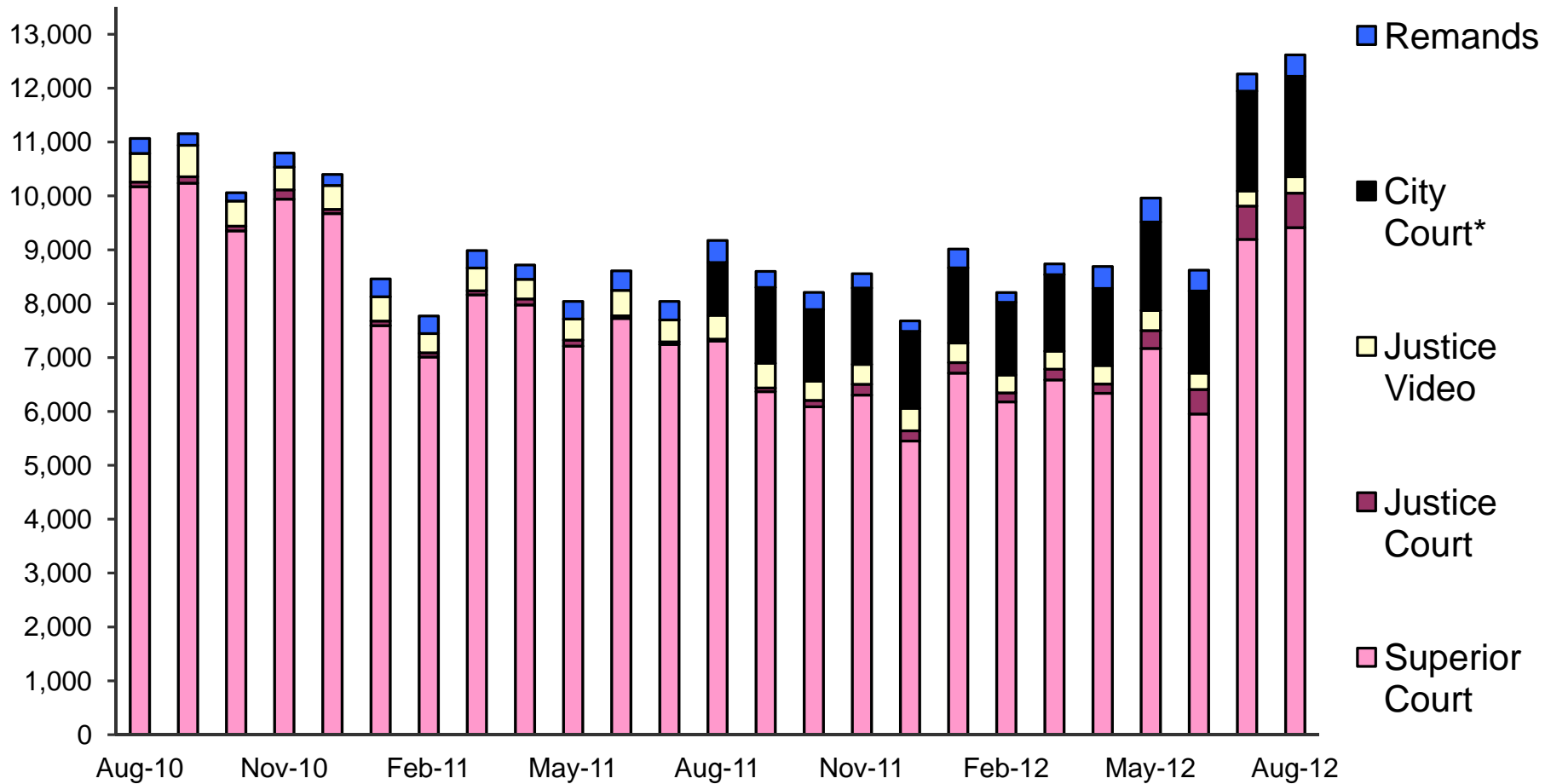


Active Pending Criminal Case Inventory

■ Active Pending Cases
■ Cases Arraigned

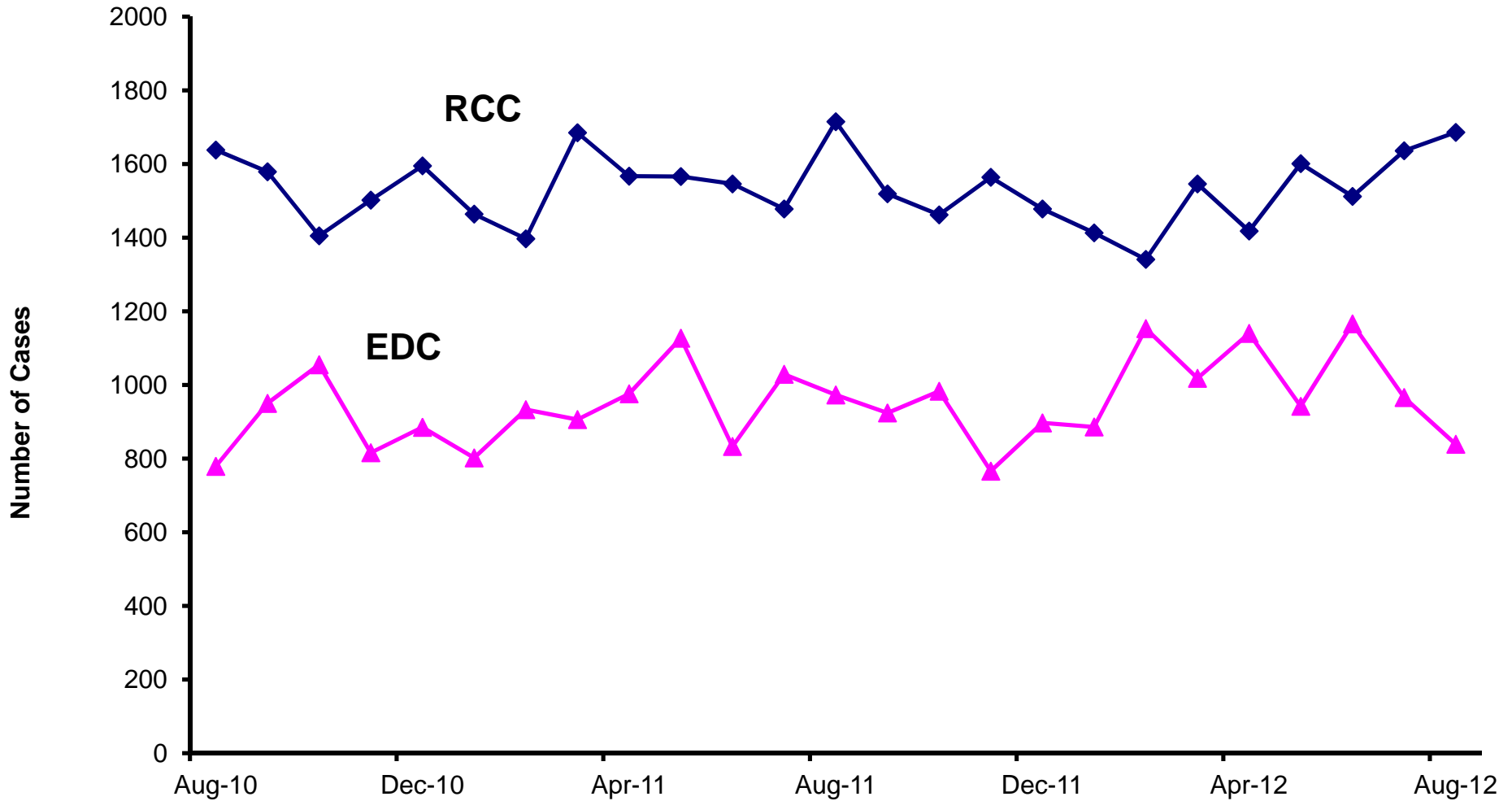


Sheriff's Office Transports for Inmate Court Appearances



*Prior to August 2011, City Court cases were included in the Superior Court totals.

Direct Complaints into Superior Court

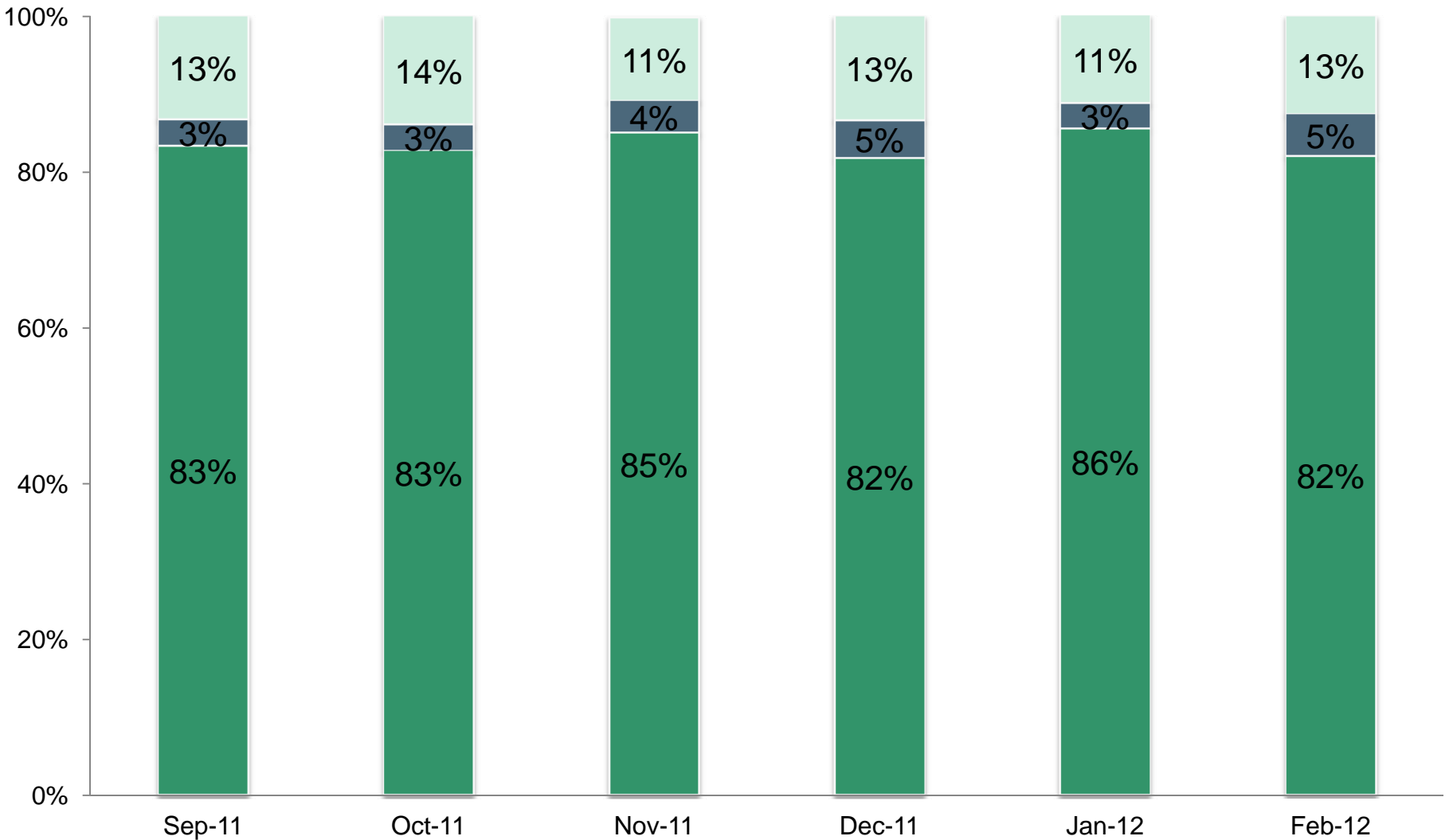


Status of Cases After 180 Days

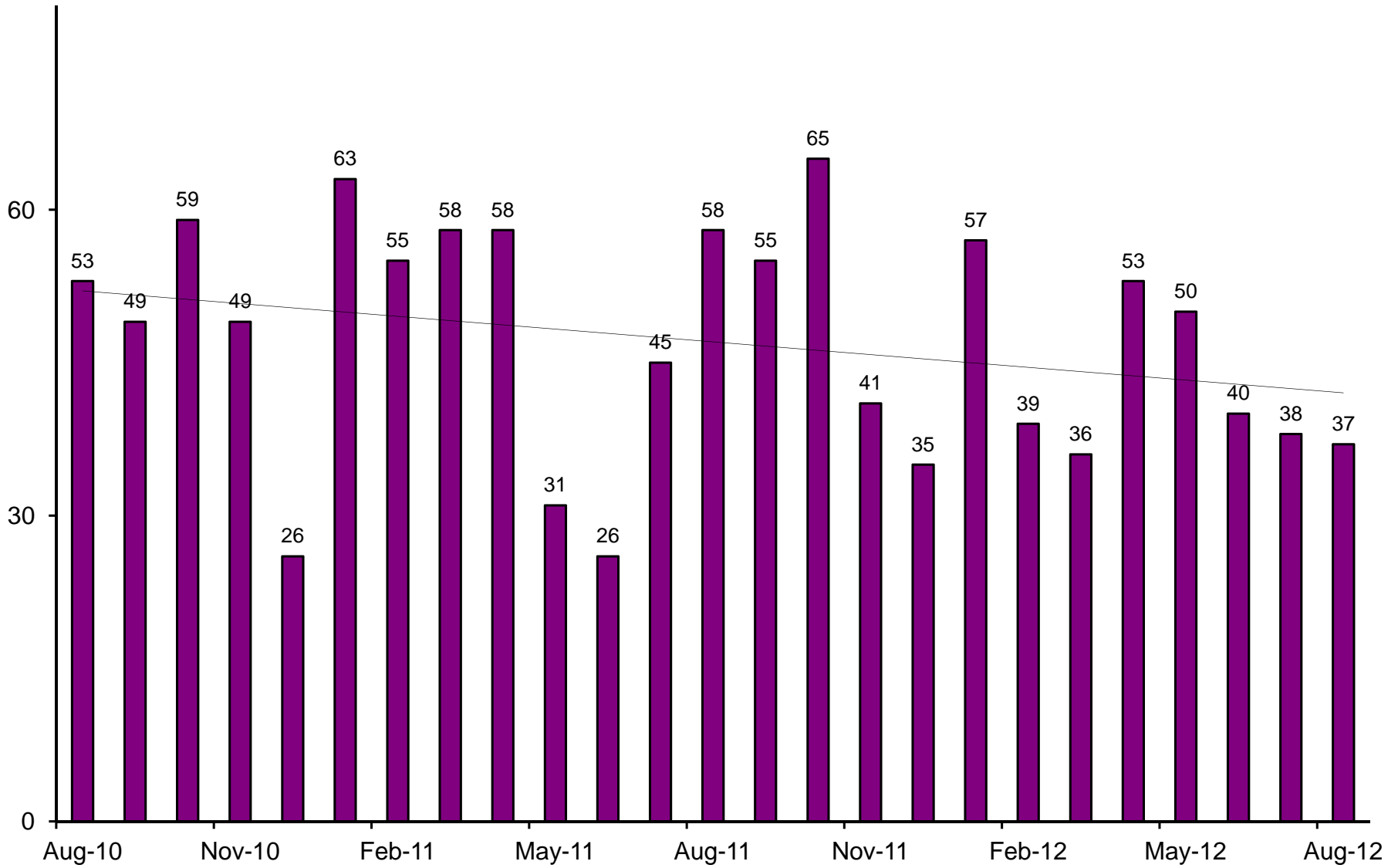
Active

Awaiting sentence

Terminated

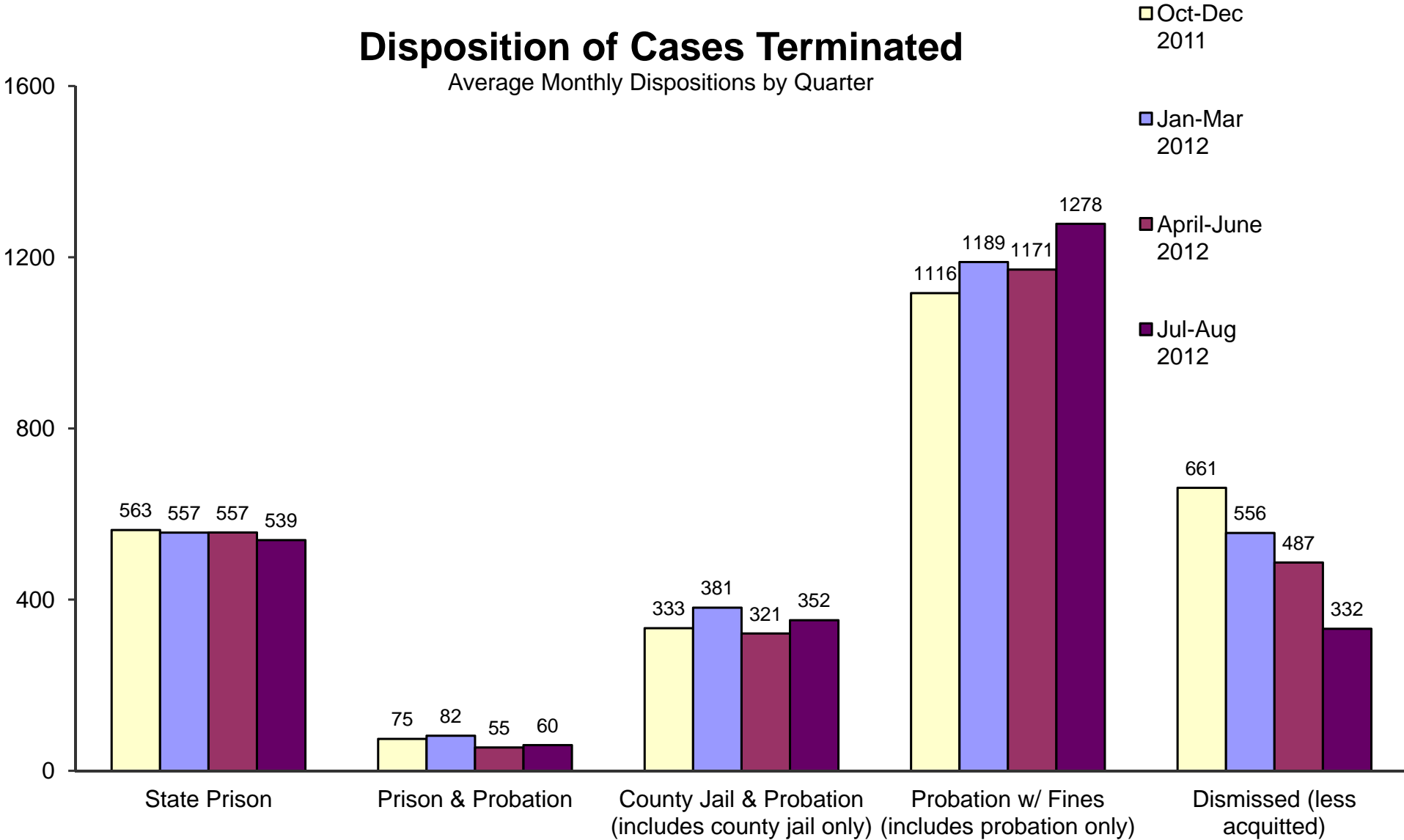


Superior Court Trials Completed

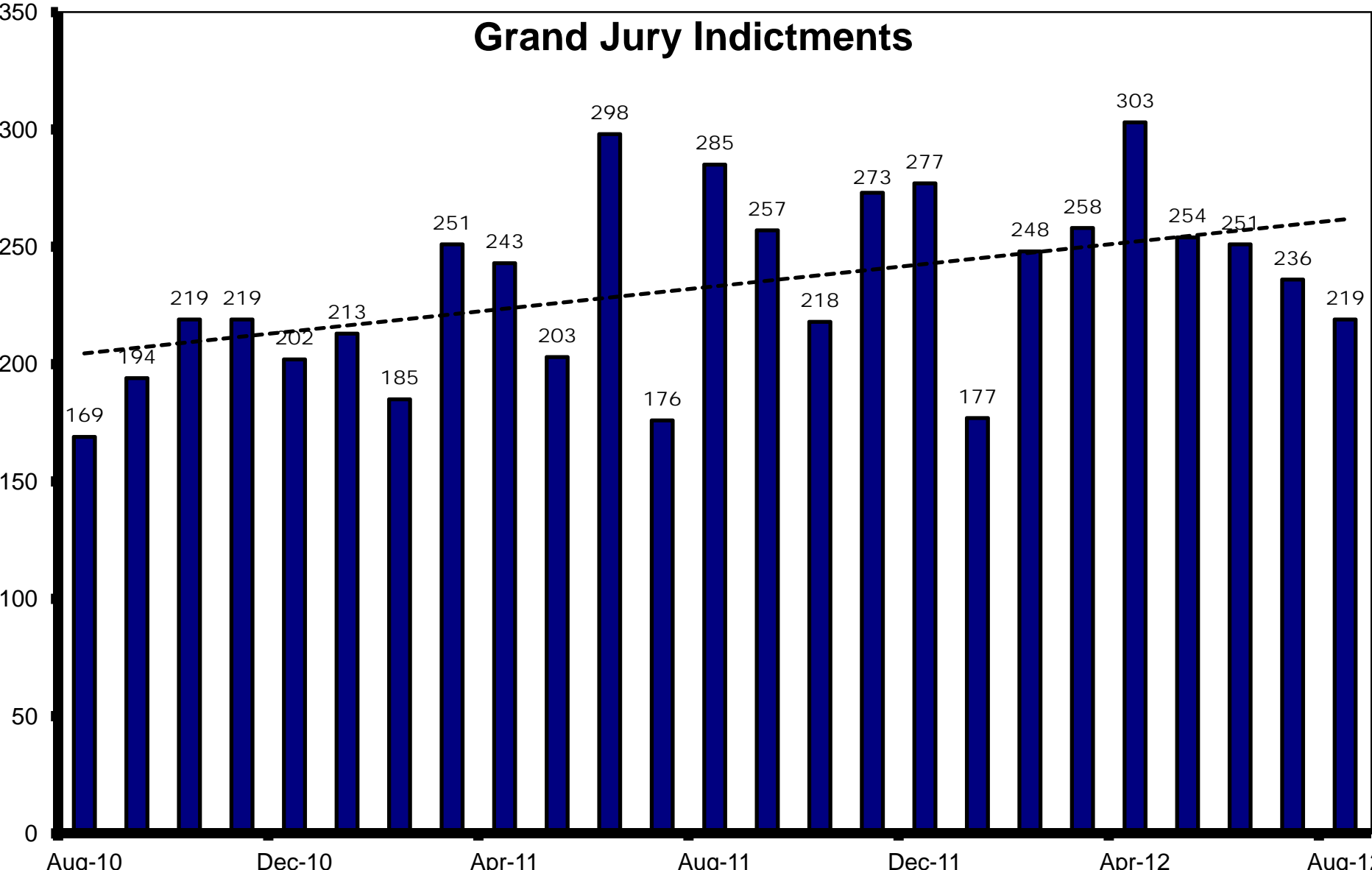


Disposition of Cases Terminated

Average Monthly Dispositions by Quarter

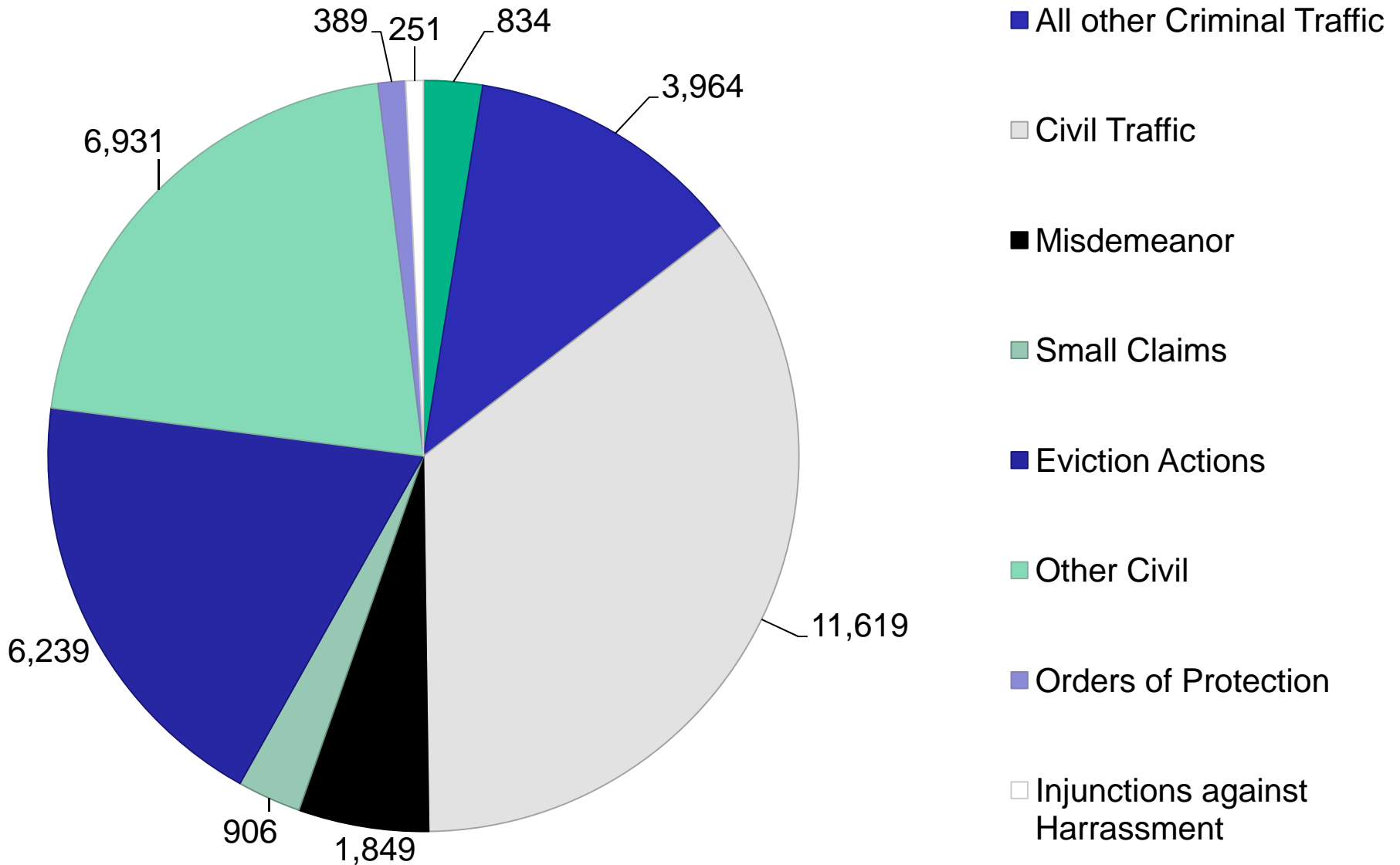


Grand Jury Indictments

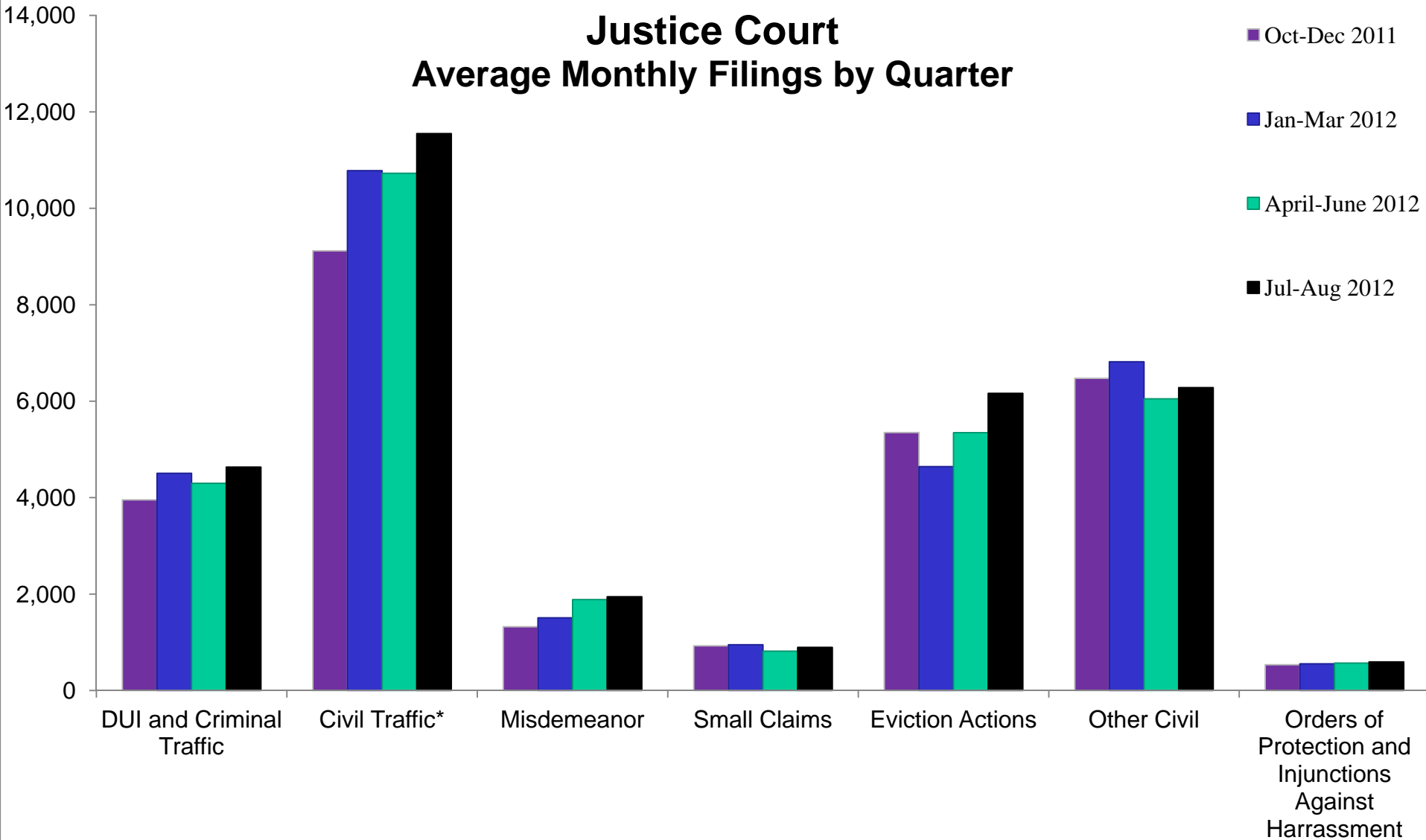


*These numbers do not include notices of supervening indictments, non-EDC direct complaints, and juvenile direct complaints.

Justice Court Filings August 2012

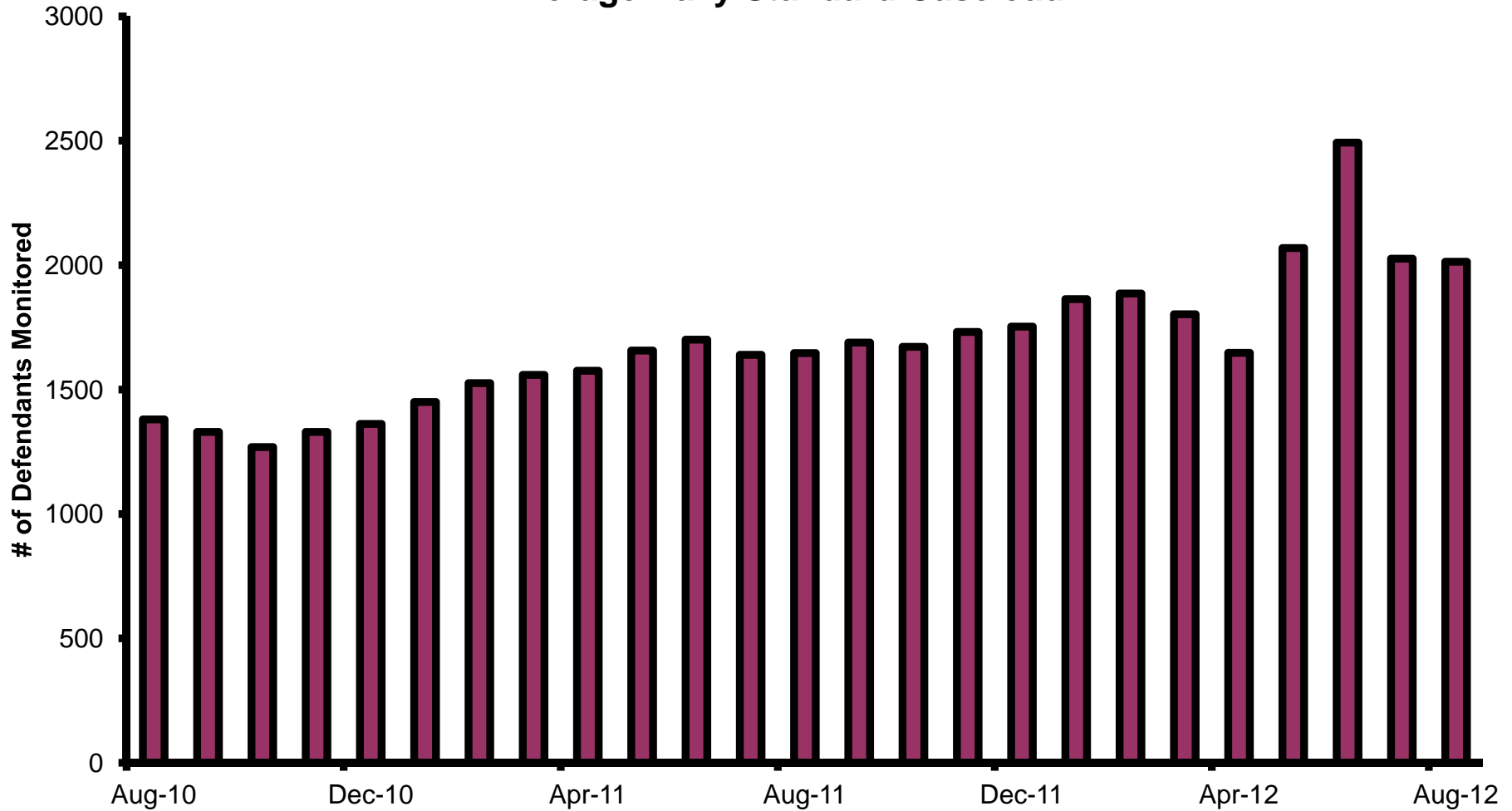


Justice Court Average Monthly Filings by Quarter



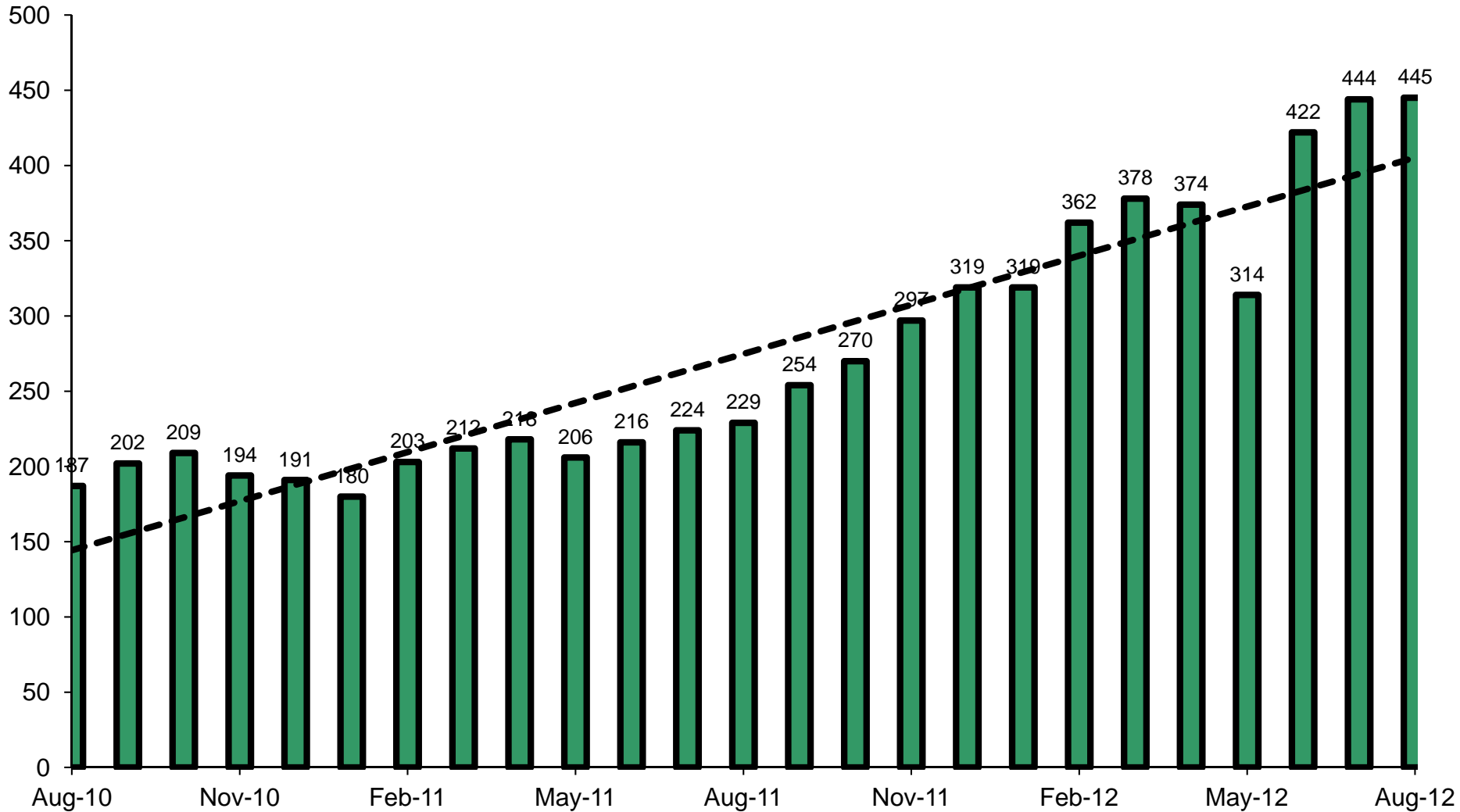
*Filings for Civil Traffic Photo Enforcement are not included in Civil Traffic.

Pretrial Supervision Defendant Monitoring Unit Average Daily Standard Caseload

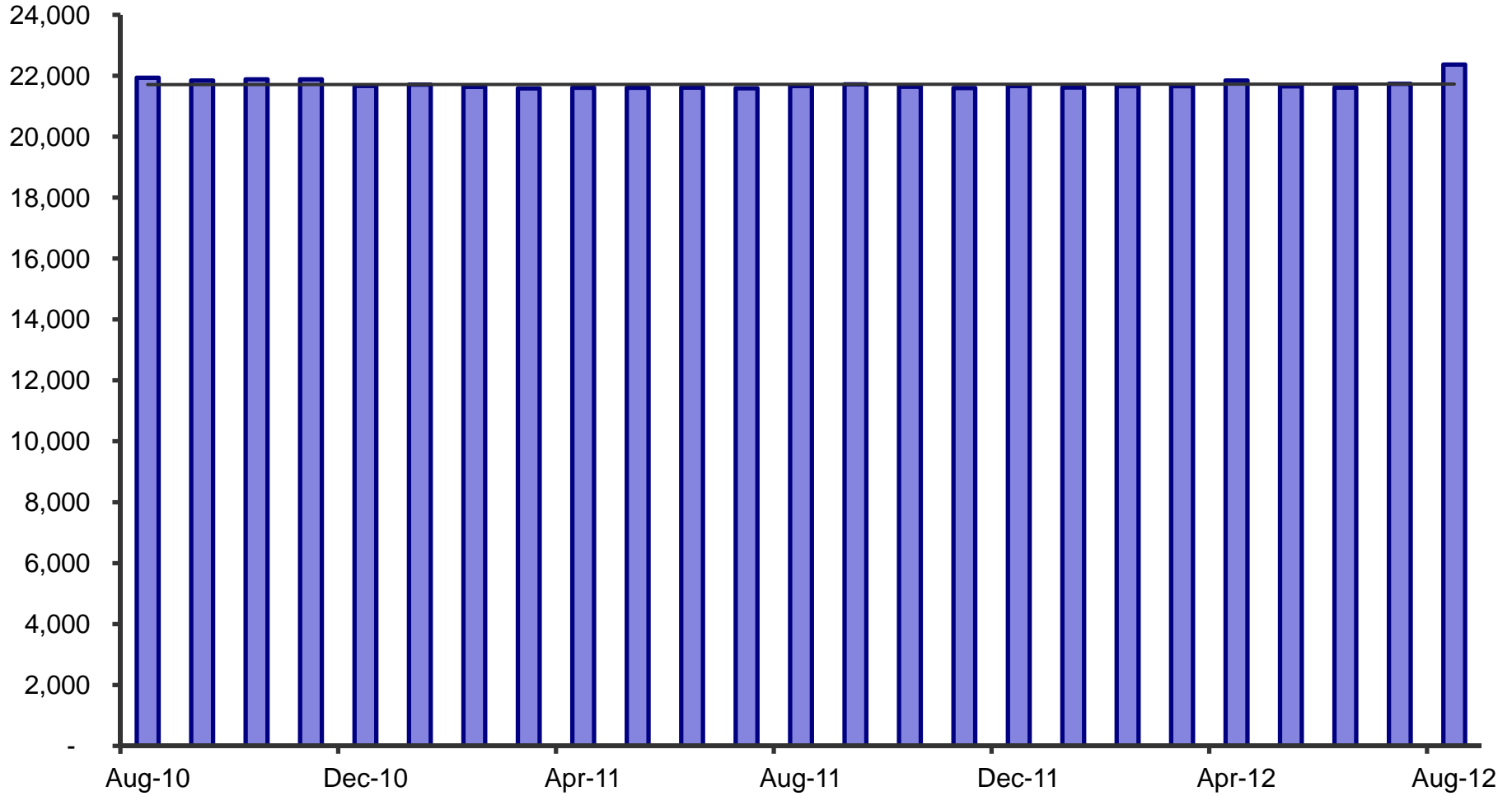


Pretrial Services supervision standards are determined by a validated risk assessment tool that provides stratified levels of supervision. As of January 2012, all previously designated General and Intensive Supervision cases are reported under the Standard category.

Pretrial Supervision Defendants on Electronic Monitoring

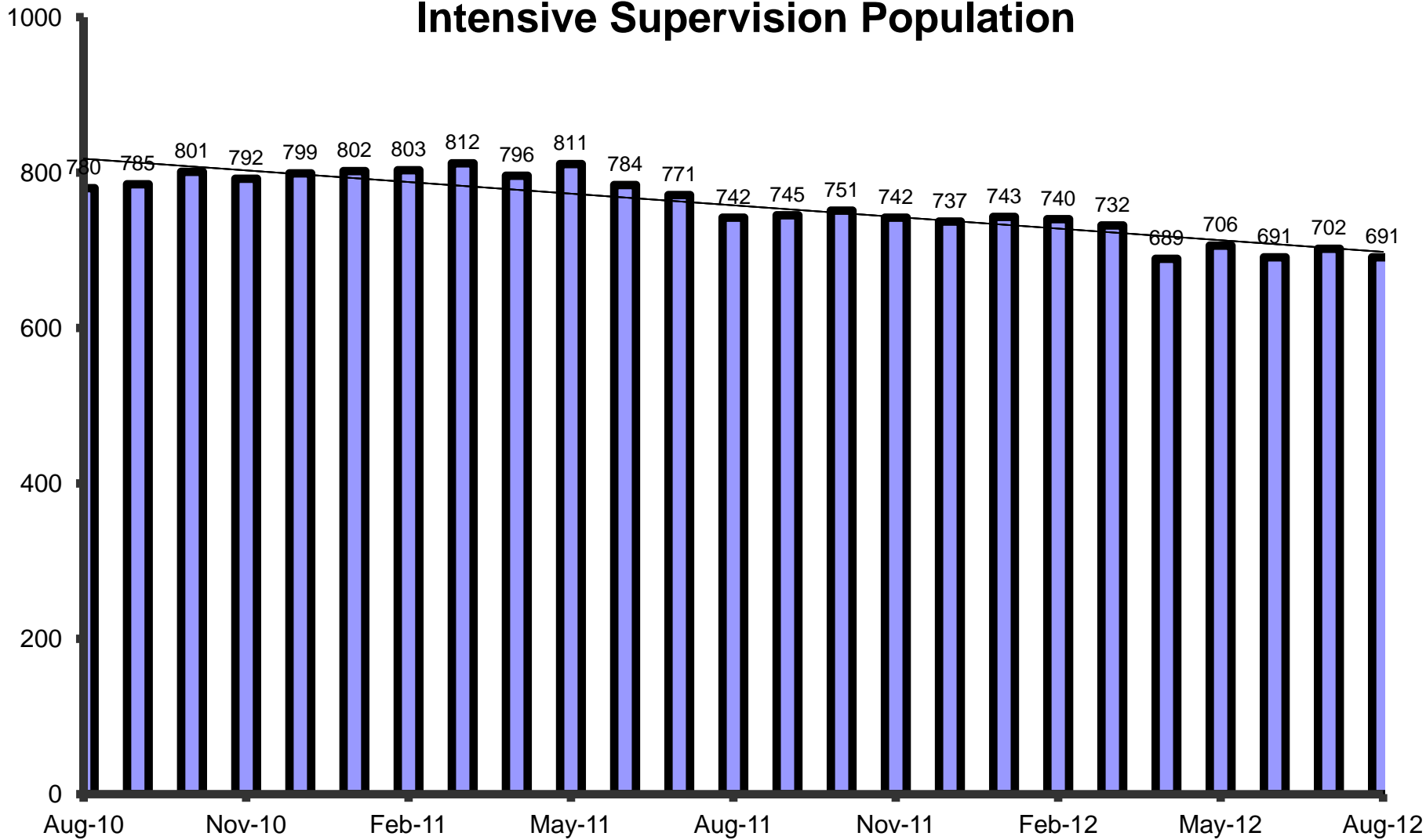


Adult Probation Standard Supervision Population

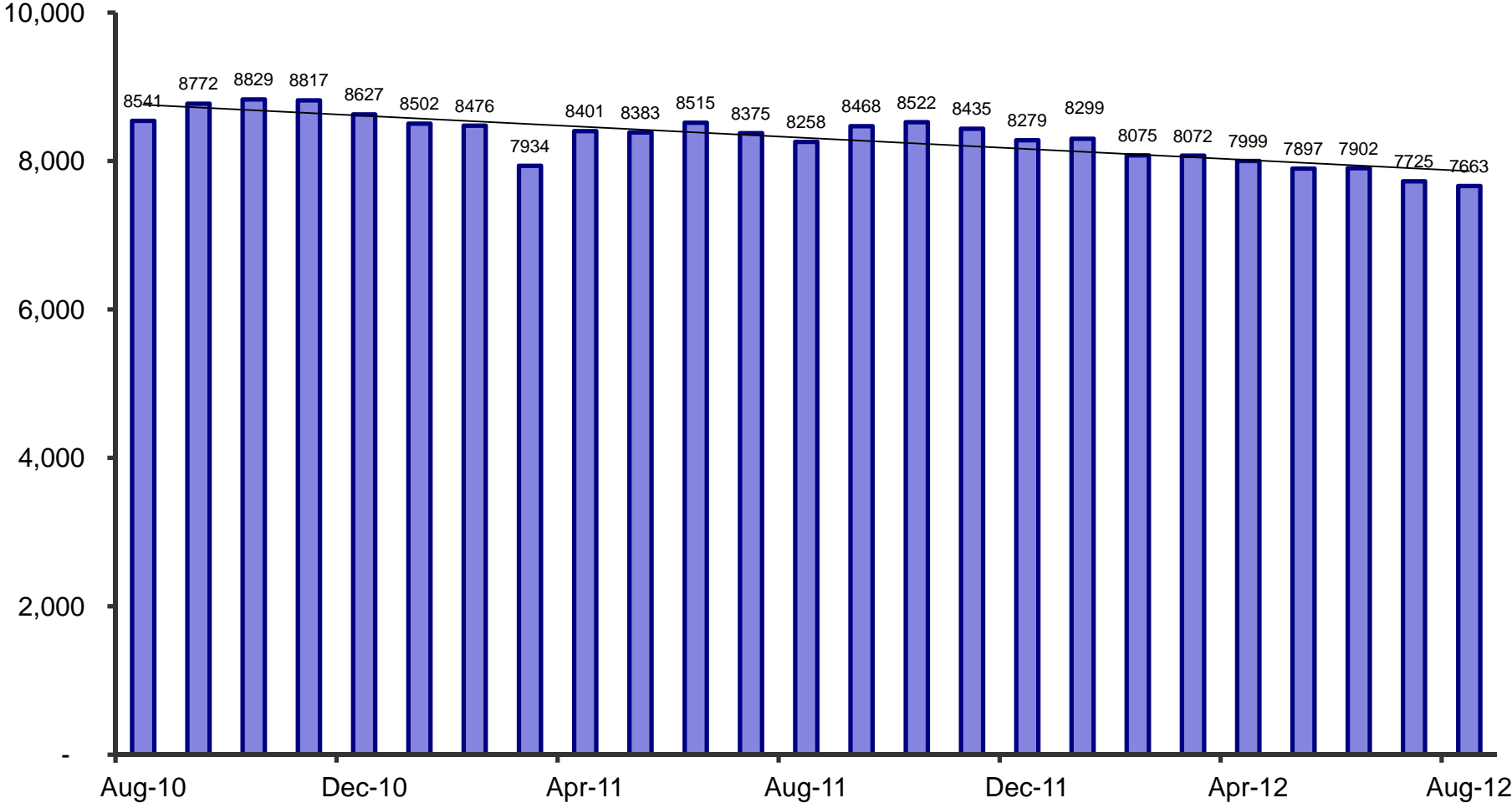


Standard and Unsupervised Probation populations were reported jointly under Standard prior to the July 2011 version of this report.

Adult Probation Intensive Supervision Population

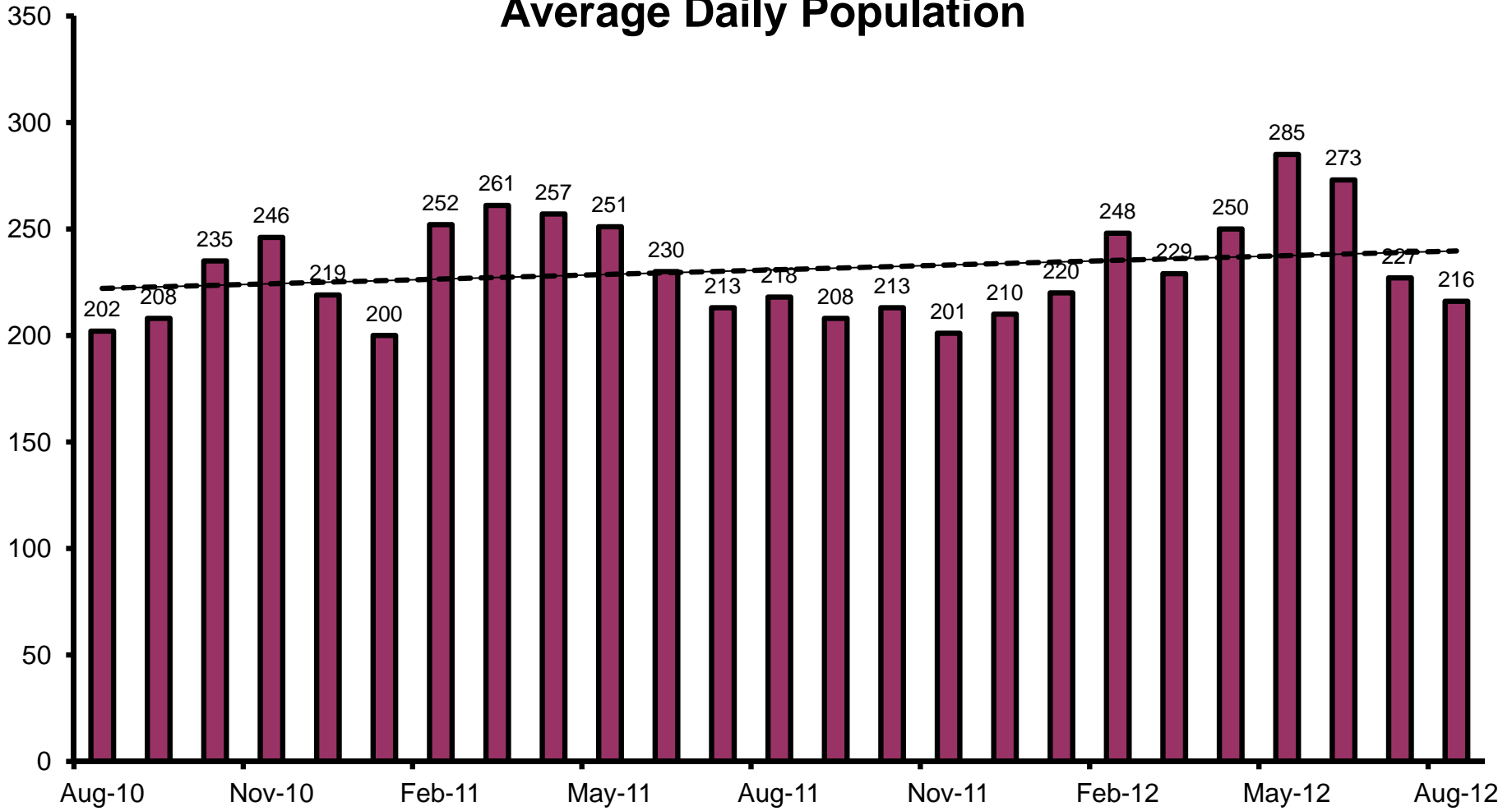


Adult Probation Unsupervised Population

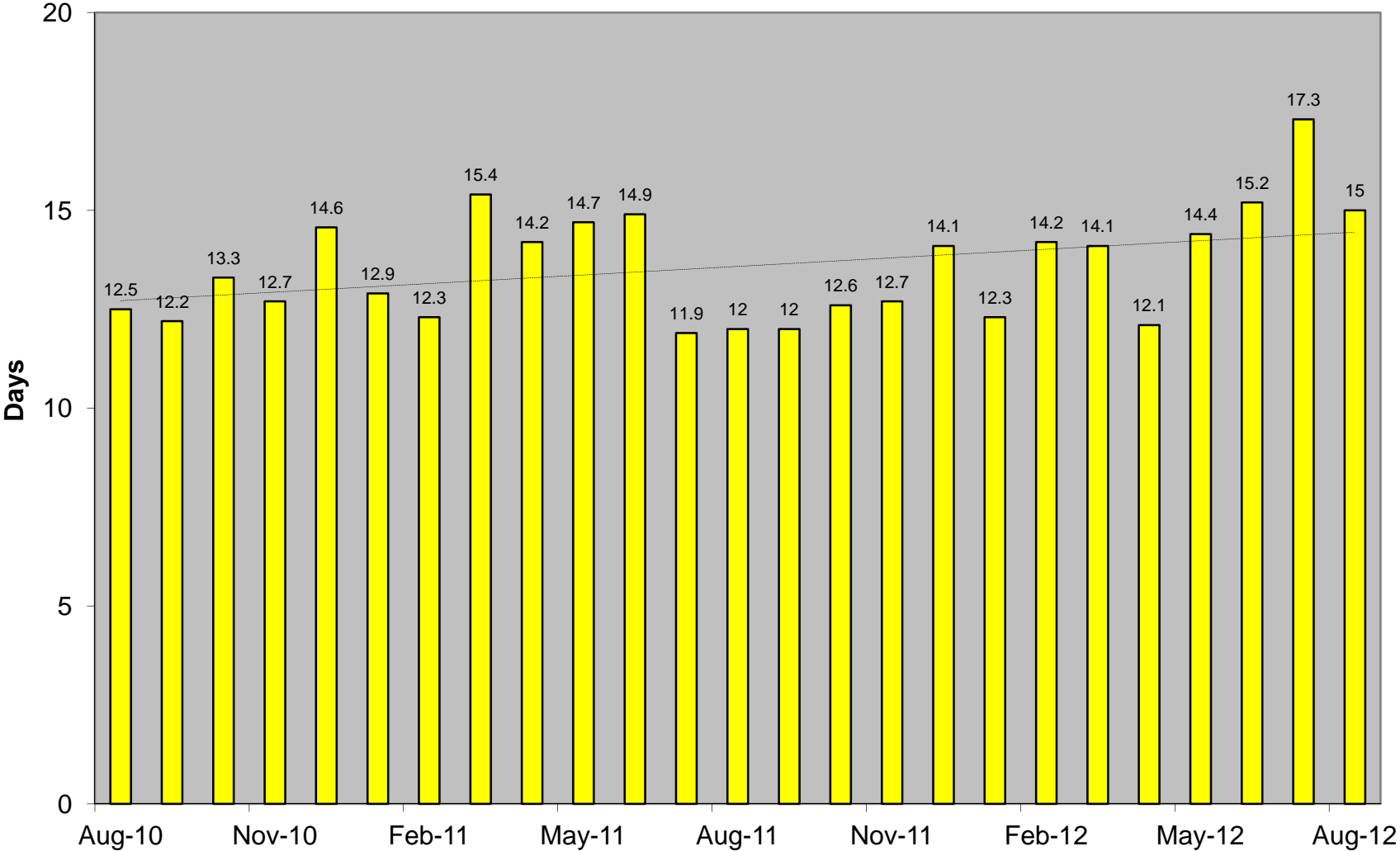


Standard and Unsupervised Probation populations were reported jointly under Standard prior to the July 2011 version of this report.

Juvenile Detention Average Daily Population



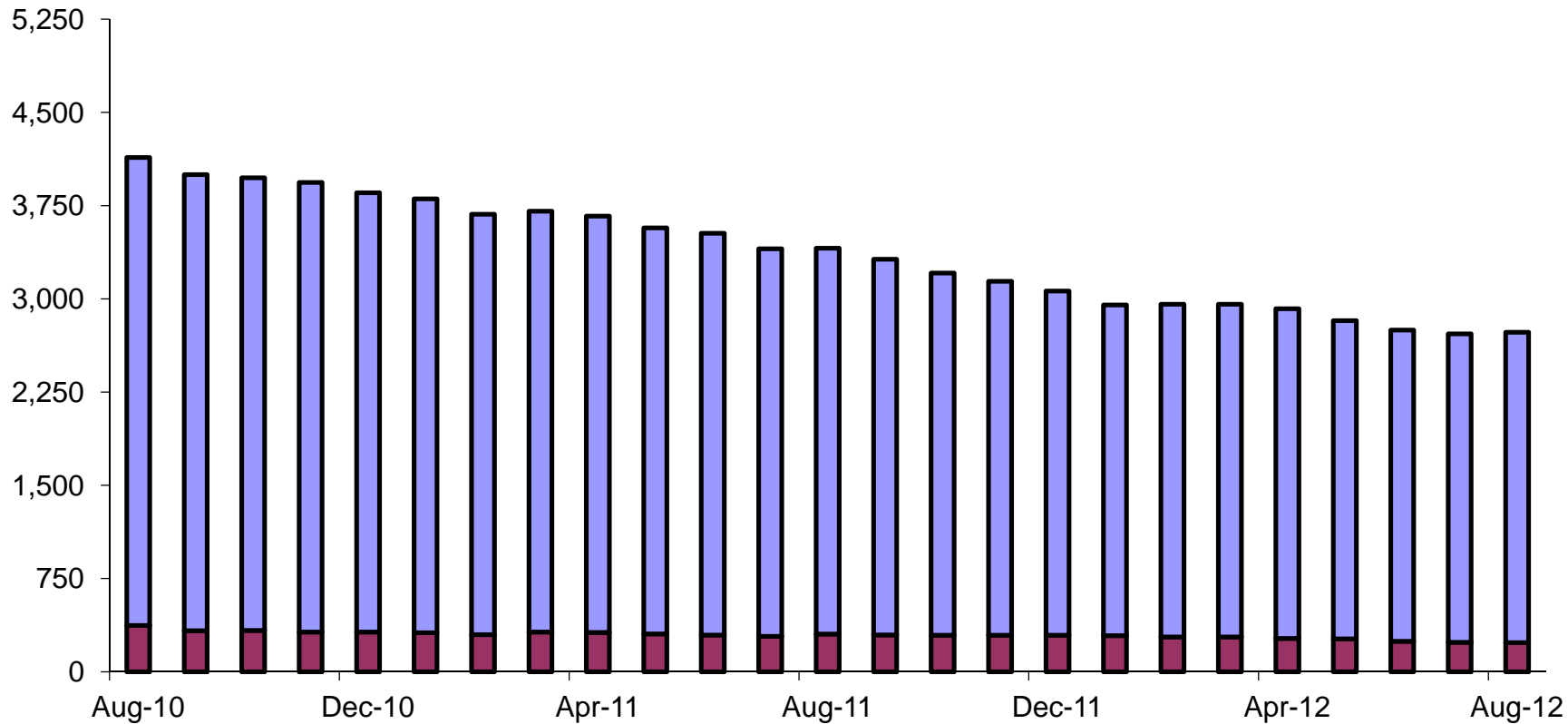
Juvenile Detention Average Length of Stay



Juvenile Probation

■ # on intensive probation

■ # on standard probation



Revised FY 09 results based on adjustments in iCIS reporting.