



Maricopa County
Criminal Justice System

Monthly Performance Report for December 2005

Monthly Averages						
	FY 2002	FY 2003	FY 2004	FY 2005	FY 2006	Dec. 2005
Sheriff's Office						
Bookings	9,641	9,875	10,176	9,975	10,278	9,483
Average Daily Population	7,557	8,044	8,657	9,054	9,903	9,537
Avg Length of Stay (in days)	23.8	24.4	26.0	27.7	29.6	31.2
Superior Court						
Filings	2,515	2,904	3,062	2,996	3,160	3,108
Terminations	2,367	2,330	2,612	2,758	2,818	2,494
Clearance Rate	94%	80%	85%	93.0%	89.5%	80.2%
Active Pending Inventory	7,419	8,123	9,106	10,002	10,996	11,132
Trials Completed	61	59	42	51	59	56
Trial Rate	2.4%	2%	1.4%	1.7%	1.9%	1.8%
Adult Probation						
Pretrial General Supervision	609	700	990	978	795	771
Pretrial Intensive Supervision	356	331	657	816	1,016	1,136
Pretrial Electronic Monitoring	78	97	153	164	179	186
Standard Probation Supervision	24,448	25,400	23,957	26,091	27,215	27,713
Intensive Probation Supervision	1,564	1,267	1,079	1,456	1,350	1,313
Juvenile Detention and Probation						
Avg Daily Detention Pop	407	401	431	443	421	418
Avg Length of Stay (in days)	14.7	15.1	16.6	18.7	17.8	17.7
Standard Prob.	4,726	4,387	4,232	4,108	4,042	3,955
Intensive Prob.	666	659	518	547	542	509

Criminal Justice System News

Adult Incarceration: *Bookings and ADP continued the decline seen this time of year. Bookings fell from 9,935 in November to 9,483 in December, ADP from 10,117 to 9,537. Halfway through FY06, average bookings are approximately 300 higher than total FY05. ADP is nearly 850 higher than total FY05. The average length of stay continued its increase in December, to 31.2 days. ALOS was 30.6 days in November. FY06-to-date, ALOS is 1.6 days higher than total FY05.*

While ADP for all populations decreased, the ALOS for nearly all populations increased. The pretrial population decreased by 301, sentenced by 246, and agency holds by 33. The ALOS for agency holds increased by 6.8 days, for sentenced by 2.8 days, and for overall pretrial by 1.1 days. Breaking down the pretrial population, felony holds increased 1.8 days while misdemeanor holds decreased 0.2 days.

Filings & Case Processing: *Criminal filings increased from 2,975 (Nov) to 3,108 (Dec); however, terminations decreased from 2,890 to 2,494 resulting in the lowest termination rate since March 2004. Filings for the first six months of FY06 are 16% higher than filings during the same time period in FY05. The active pending case inventory increased from 10,862 to 11,132. Filings into the RCC and EDC increased in December, from 1,833 to 1,974 for RCC and from 745 to 787 for EDC.*

Adult Probation: *Levels of pretrial general supervision decreased from 817 (Nov) to 771 (Dec). Levels of pretrial intensive supervision and electronic monitoring increased: intensive from 1,071 to 1,136 and EM from 180 to 186.*

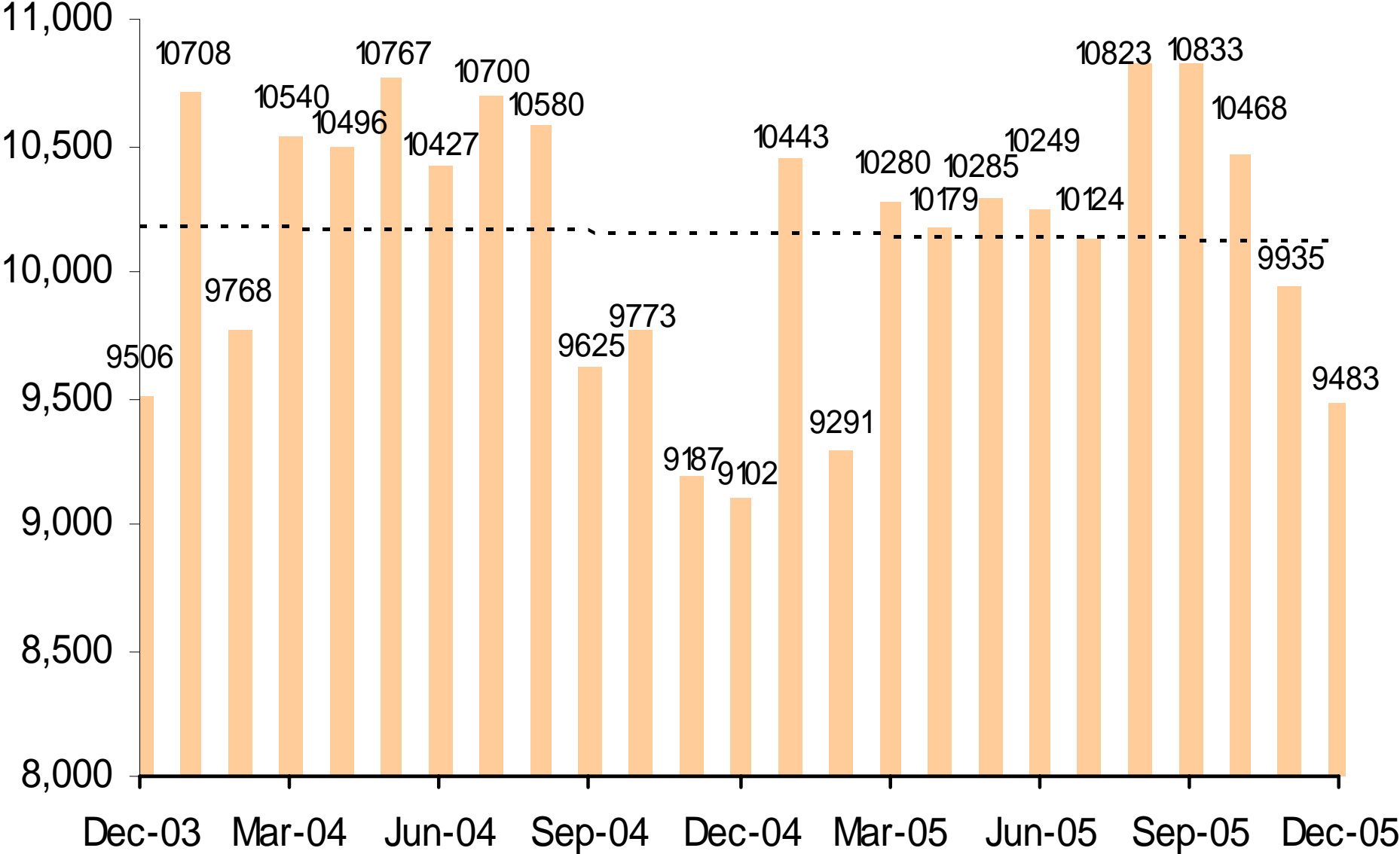
Levels of standard probation supervision increased from November (27,365) to December (27,713). Levels of intensive probation supervision decreased from 1,338 to 1,313.

Juvenile Detention and Probation: *Just as with the adult population, the average daily population decreased while the average length of stay increased. ADP went from 452 in November to 418 in December, while ALOS increased from 16.0 days to 17.7 days. Electronic monitoring increased 79 to 94. Home detention increased from 245 to 252, the highest since April 2005.*

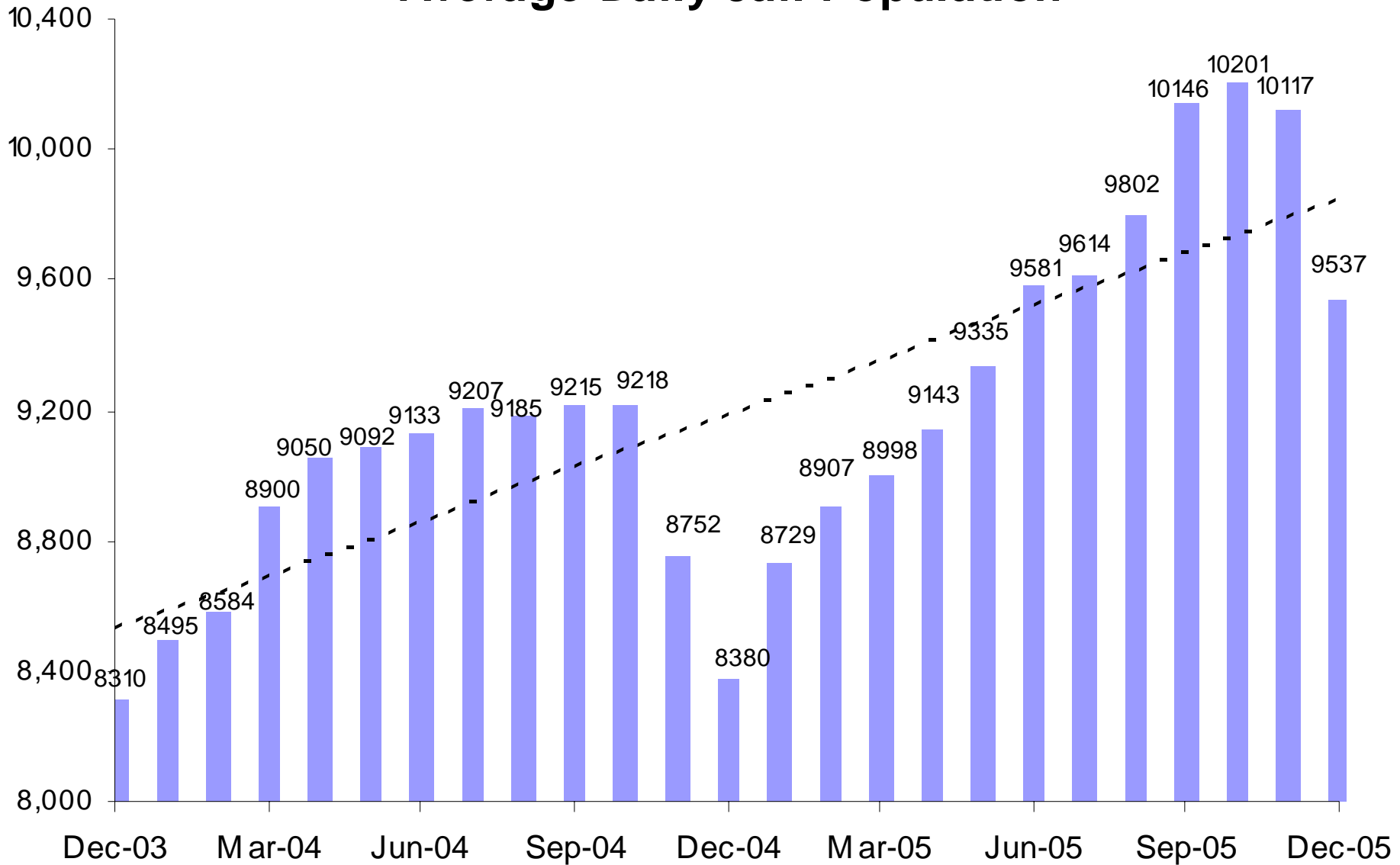
Levels of juvenile standard and intensive probation decreased. Standard went from 4,013 to 3,955, while intensive went from 539 to 509.

A criminal justice system-wide goal is to enhance the utility and timeliness of management information on case processing, in an effort to help agencies effectively address current events. An interagency committee of McJustice meets regularly to accomplish this and develop this report. Input from readers is welcomed. Please contact Amy Rex at rexa@mail.maricopa.gov or 602-506-1310.

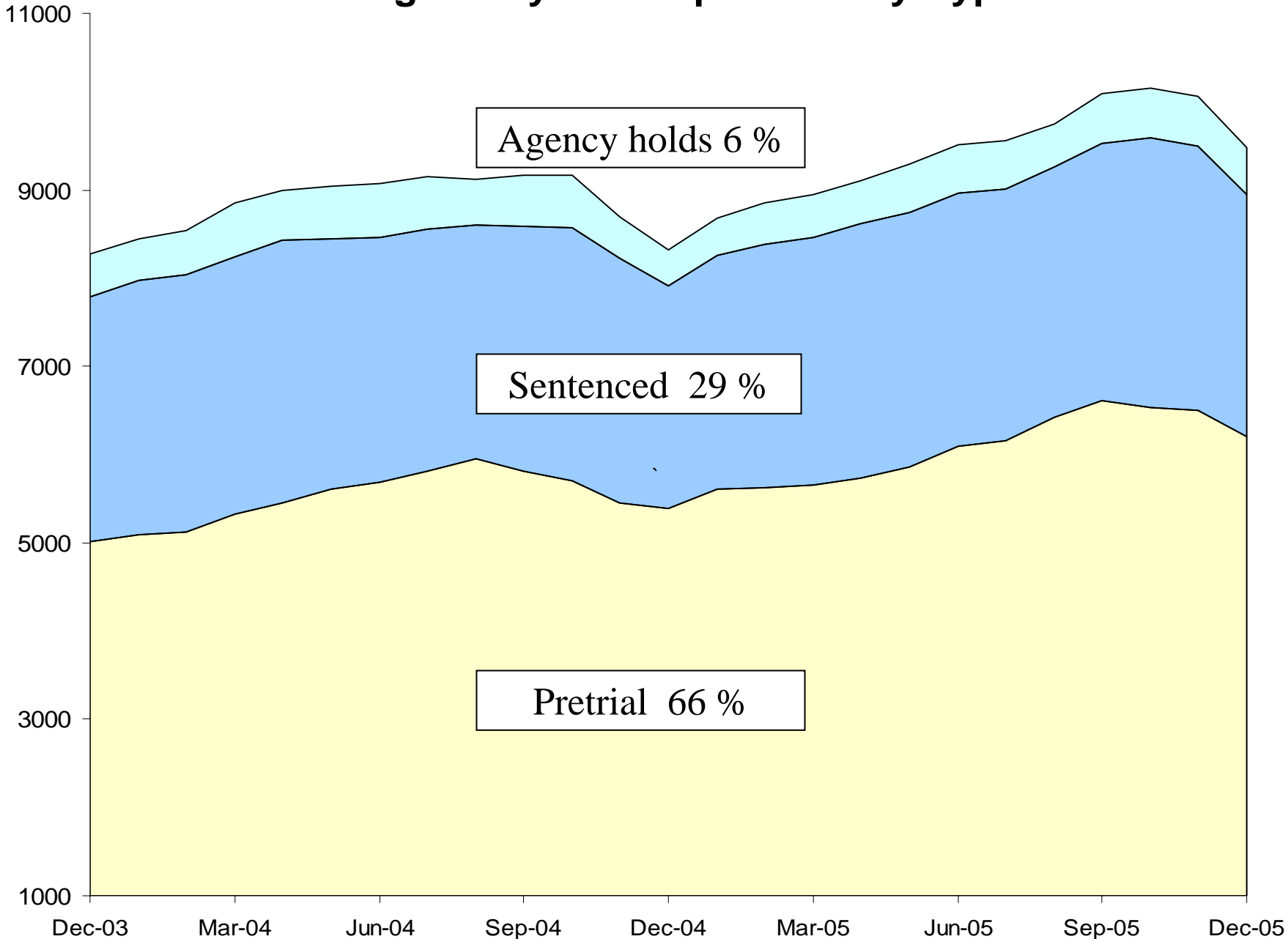
Jail Bookings



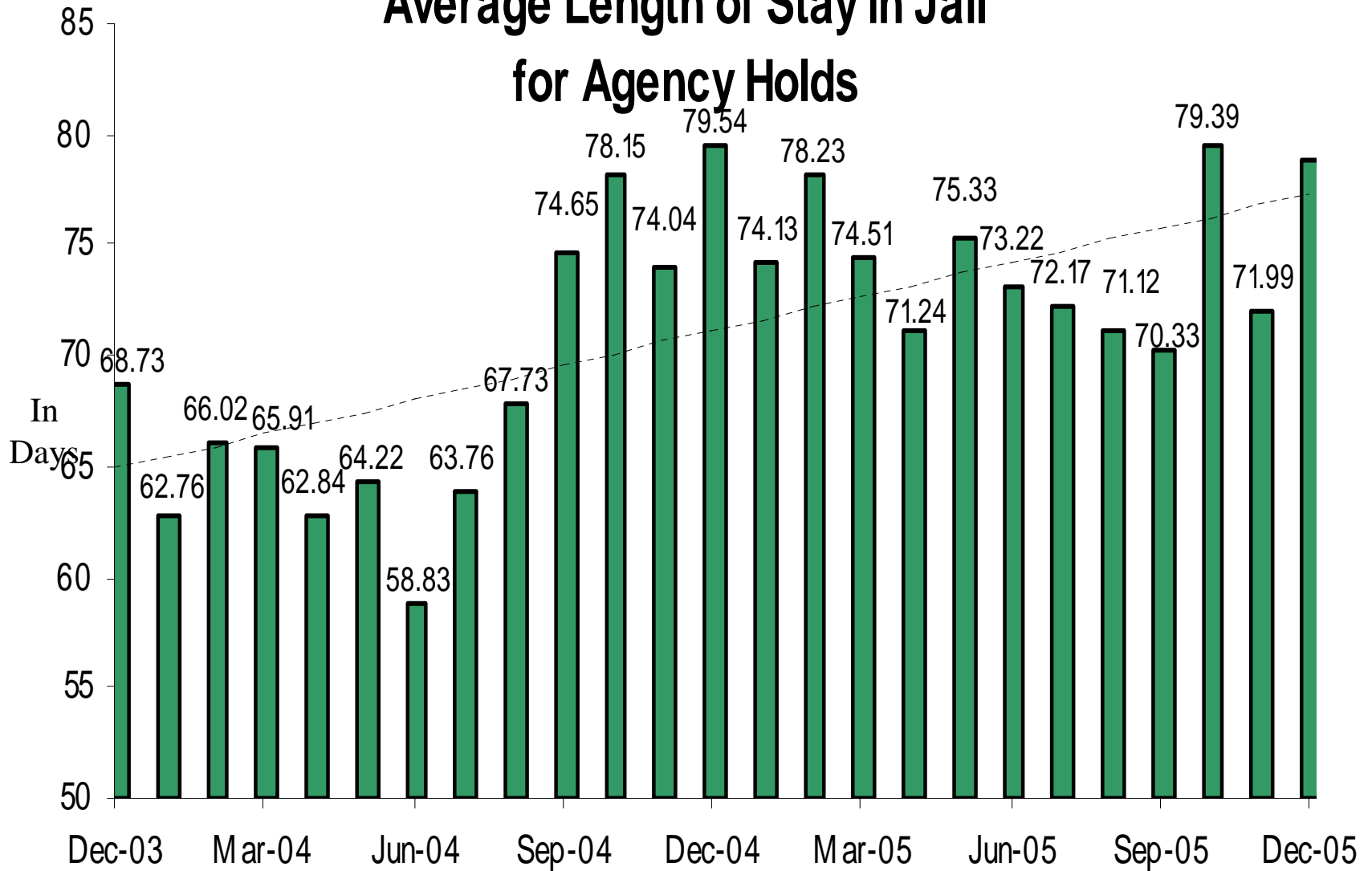
Average Daily Jail Population



Average Daily Jail Population by Type

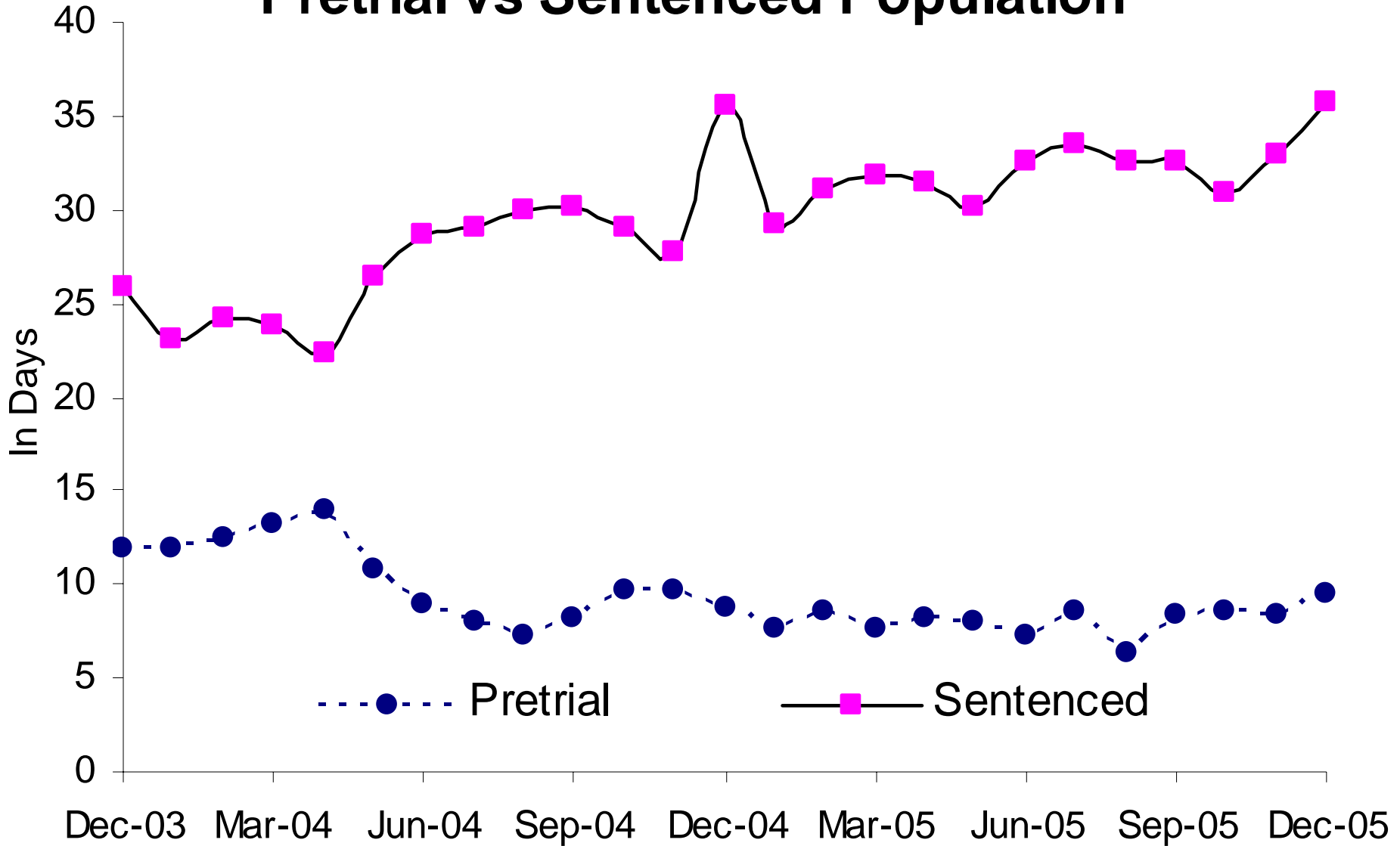


Average Length of Stay in Jail for Agency Holds

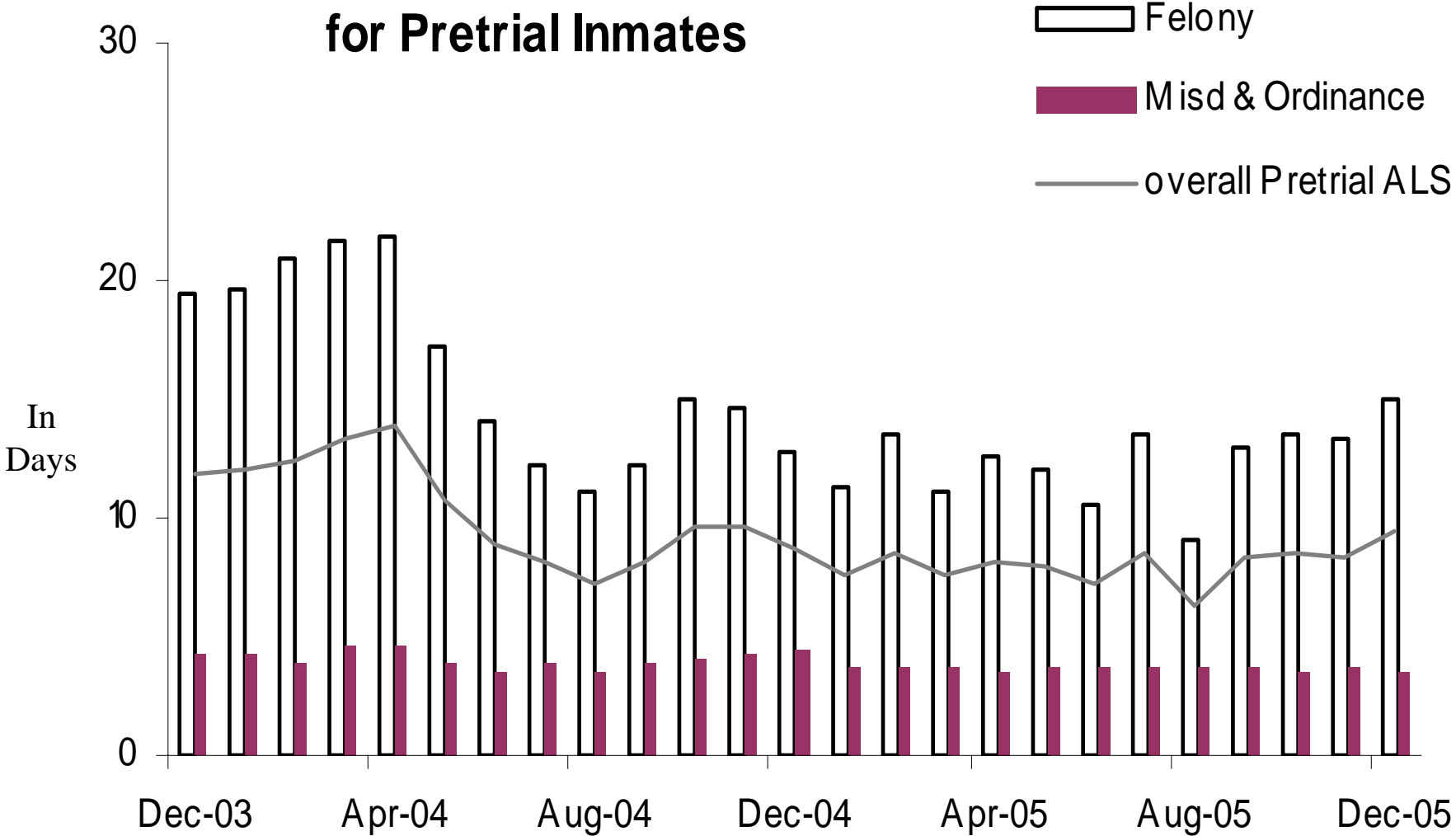


75% Dept of Corrections, 14% Federal agencies, 11% other

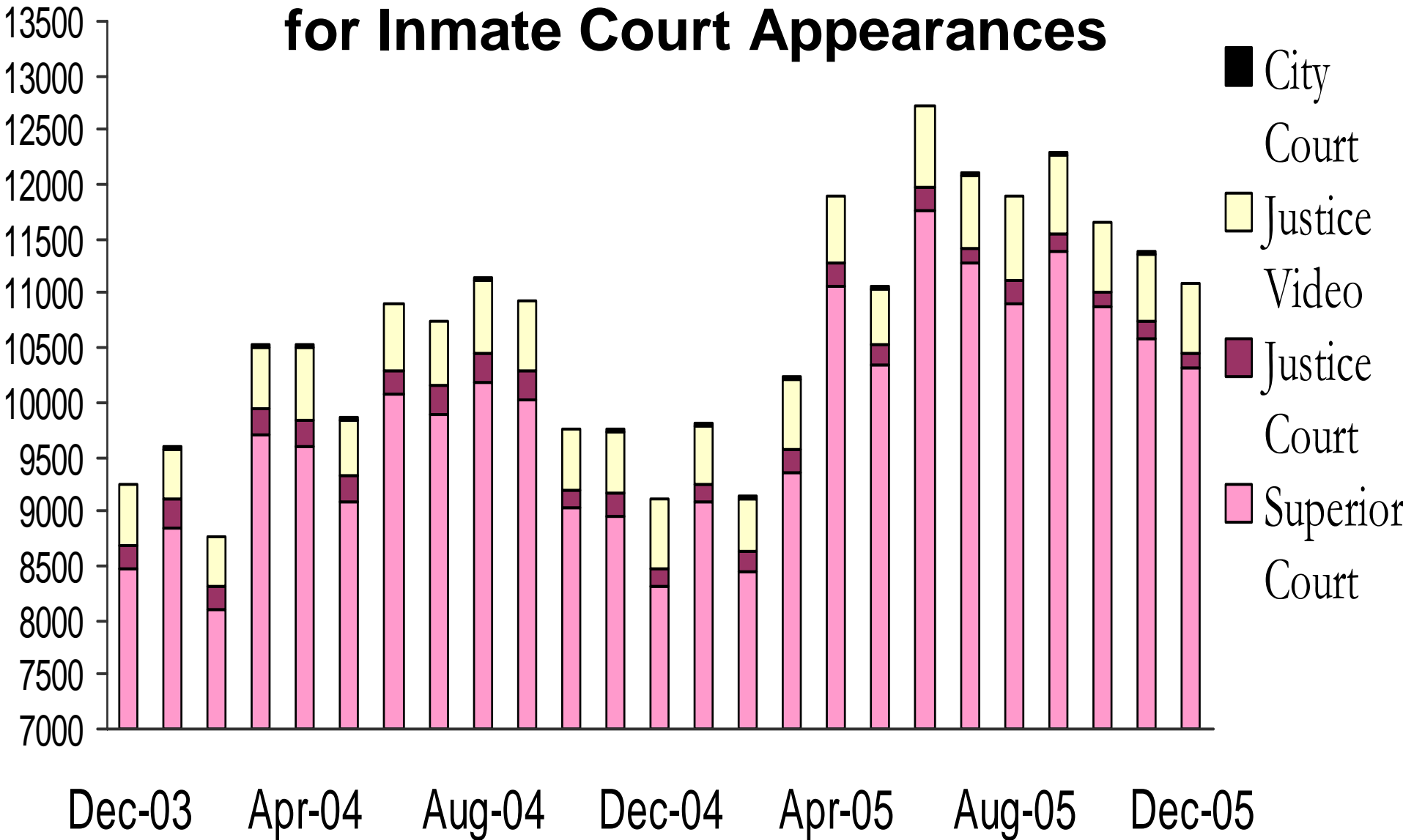
Average Length of Stay in Jail Pretrial vs Sentenced Population



Average Length of Stay in Jail for Pretrial Inmates



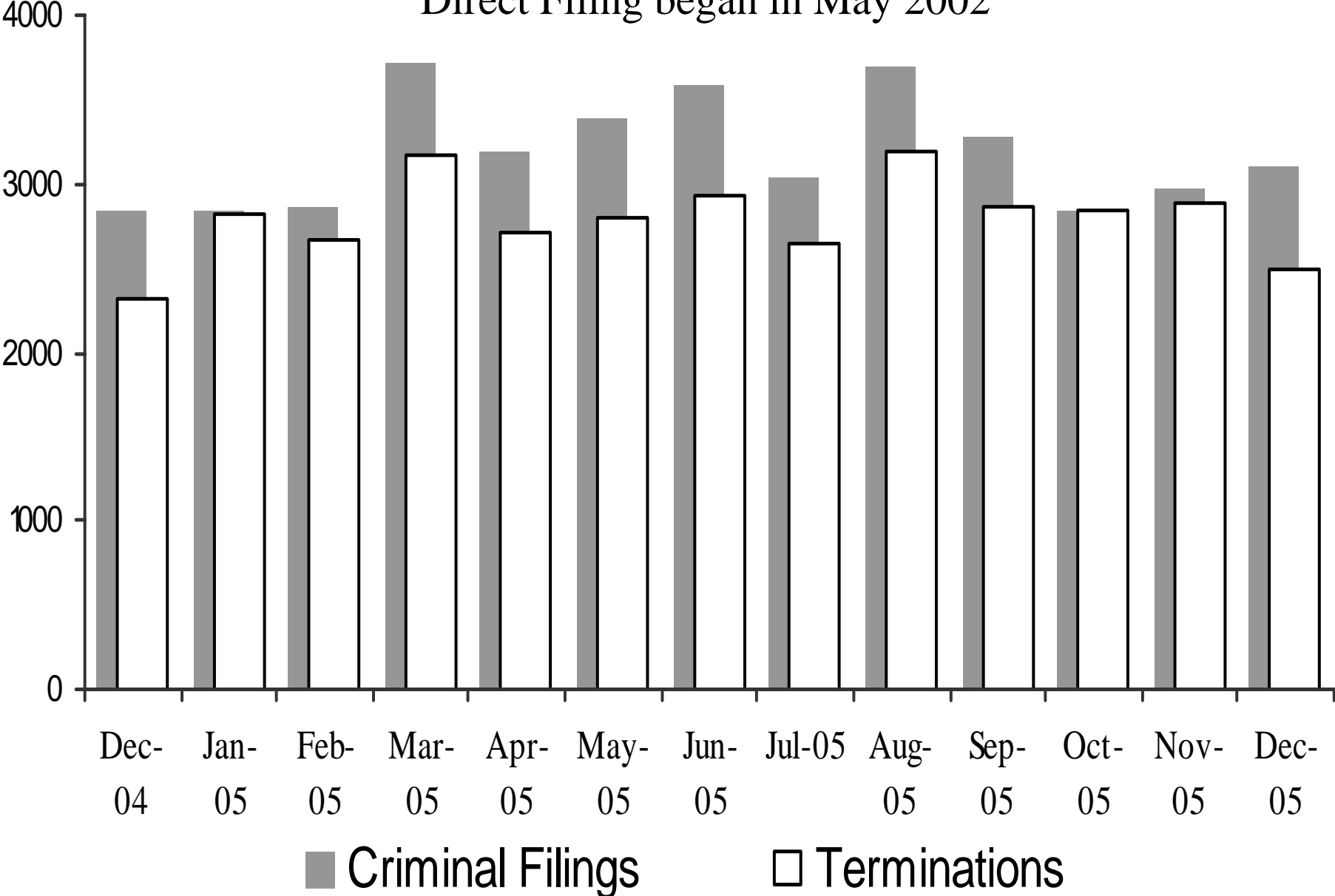
Sheriff's Office Transports for Inmate Court Appearances



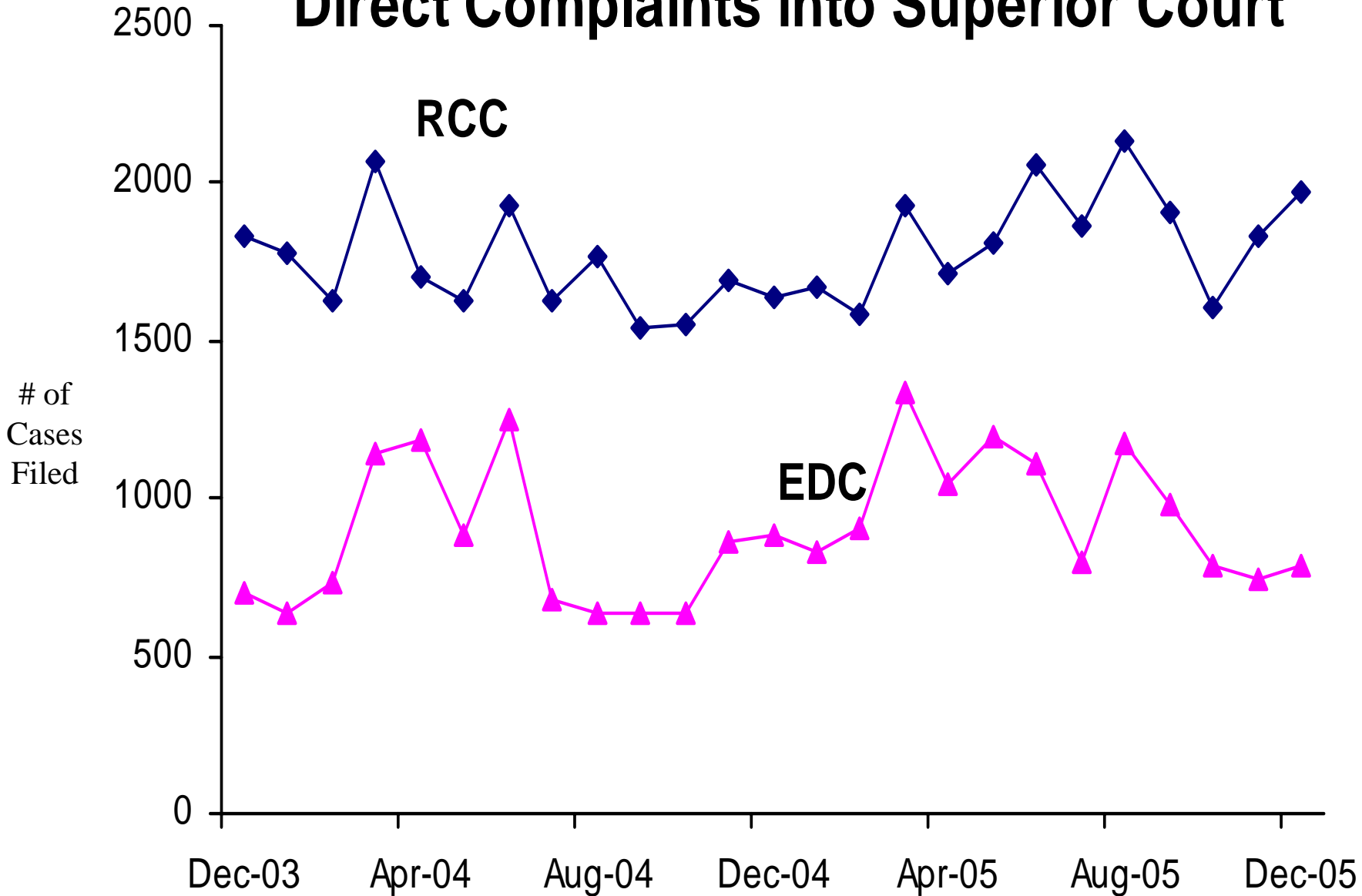
Since Direct Filing into Superior Court began May 2002, remaining transports to Justice Courts are for misdemeanor cases.

Superior Court Filings and Terminations

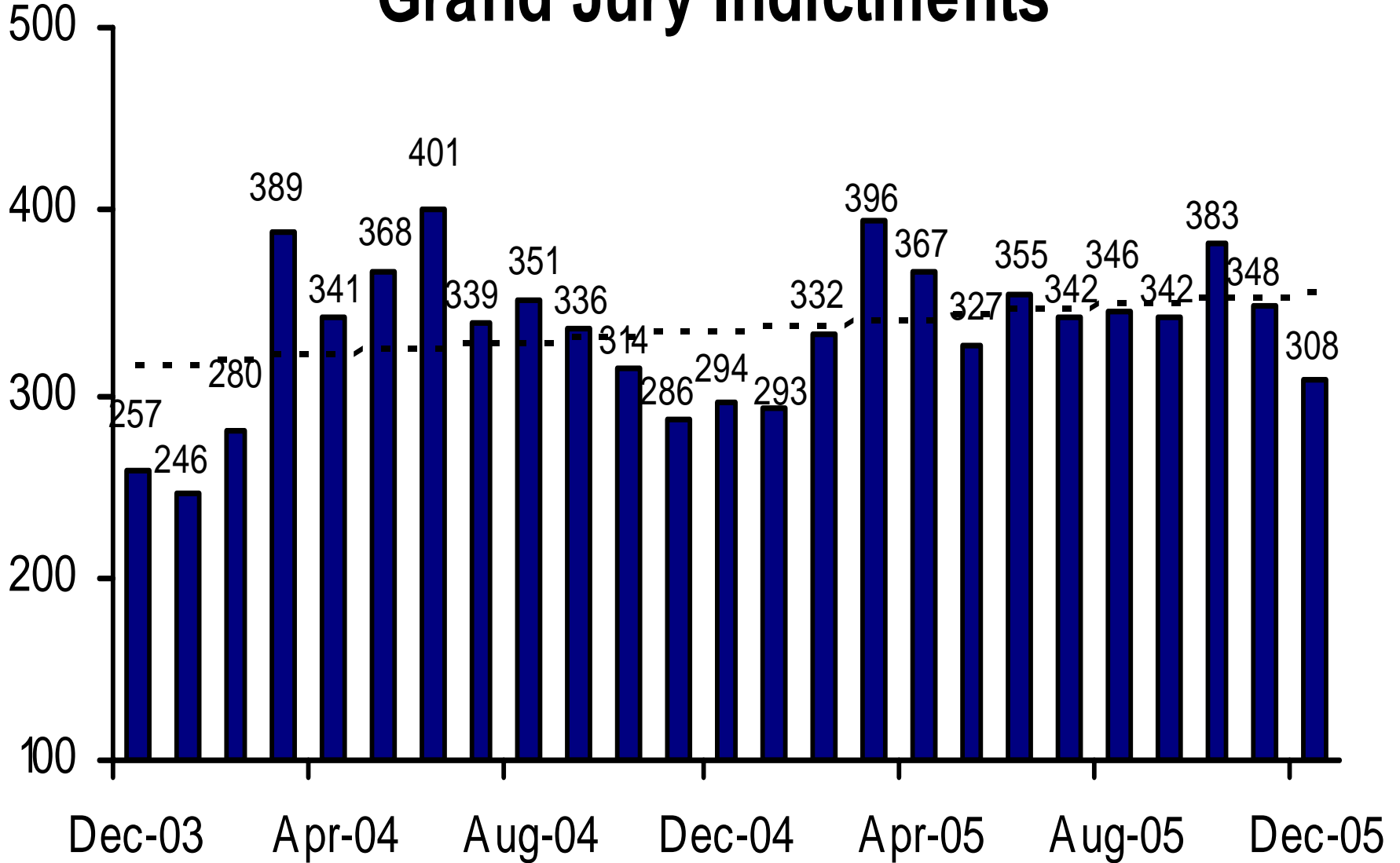
Direct Filing began in May 2002



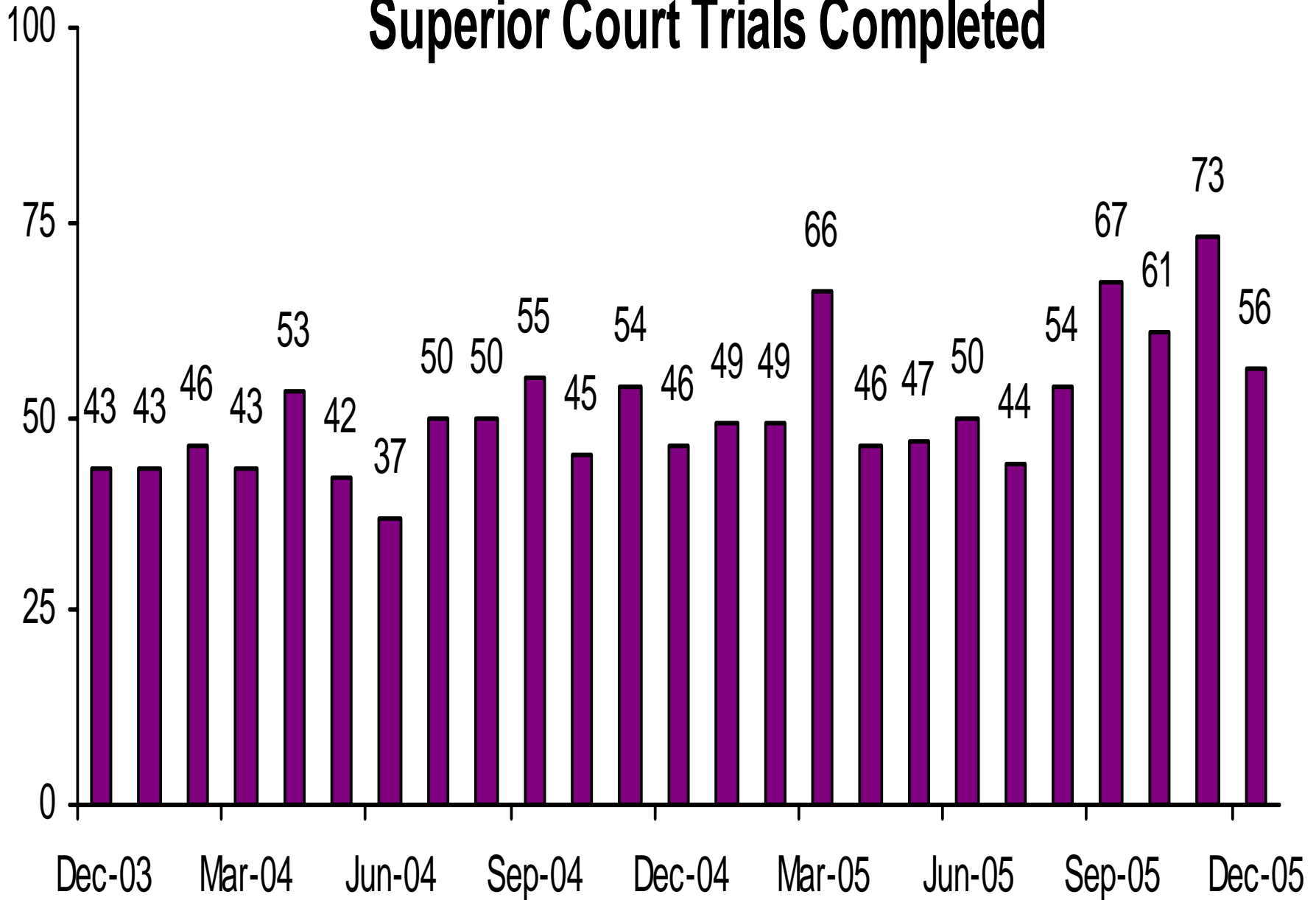
Direct Complaints into Superior Court



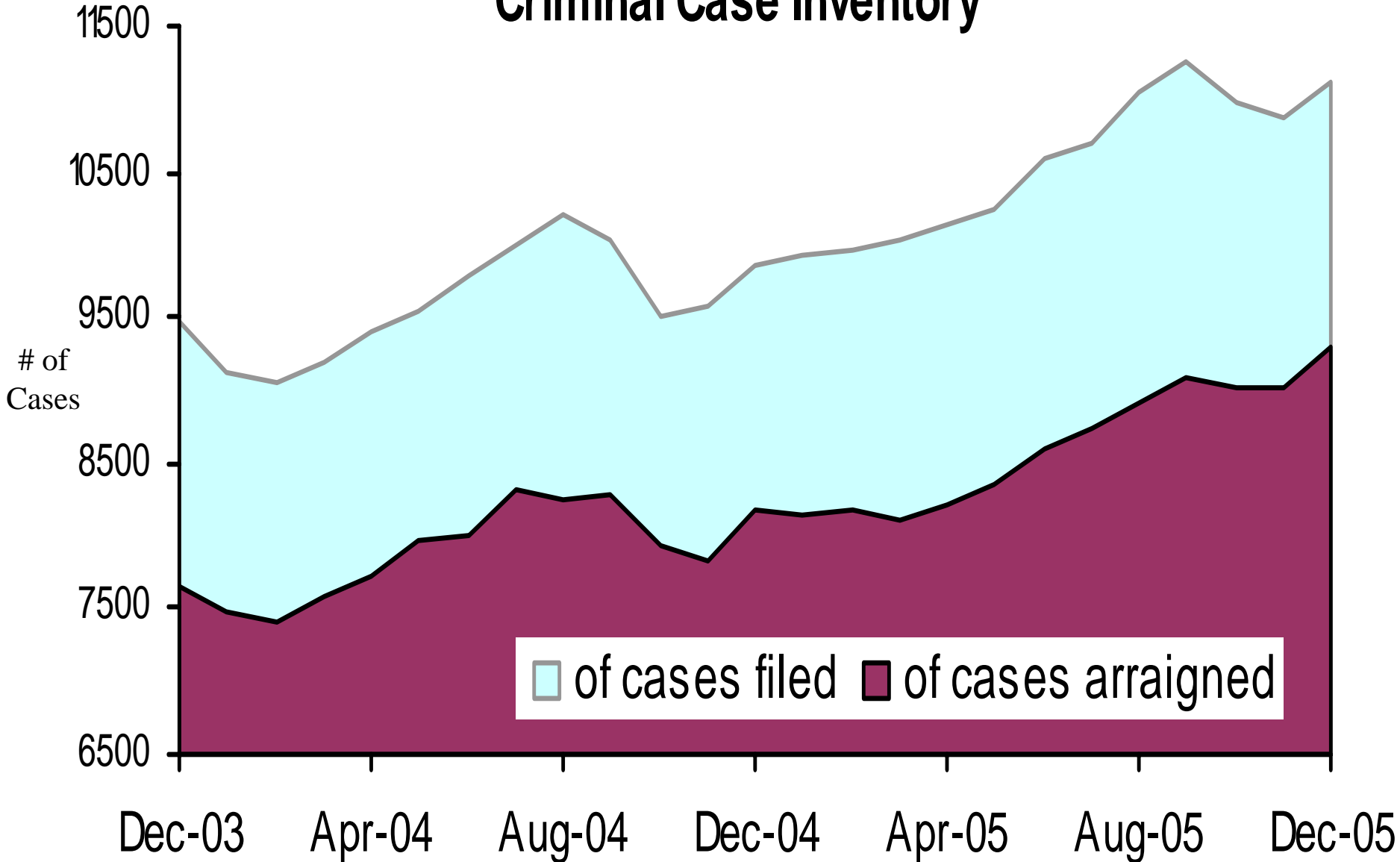
Grand Jury Indictments



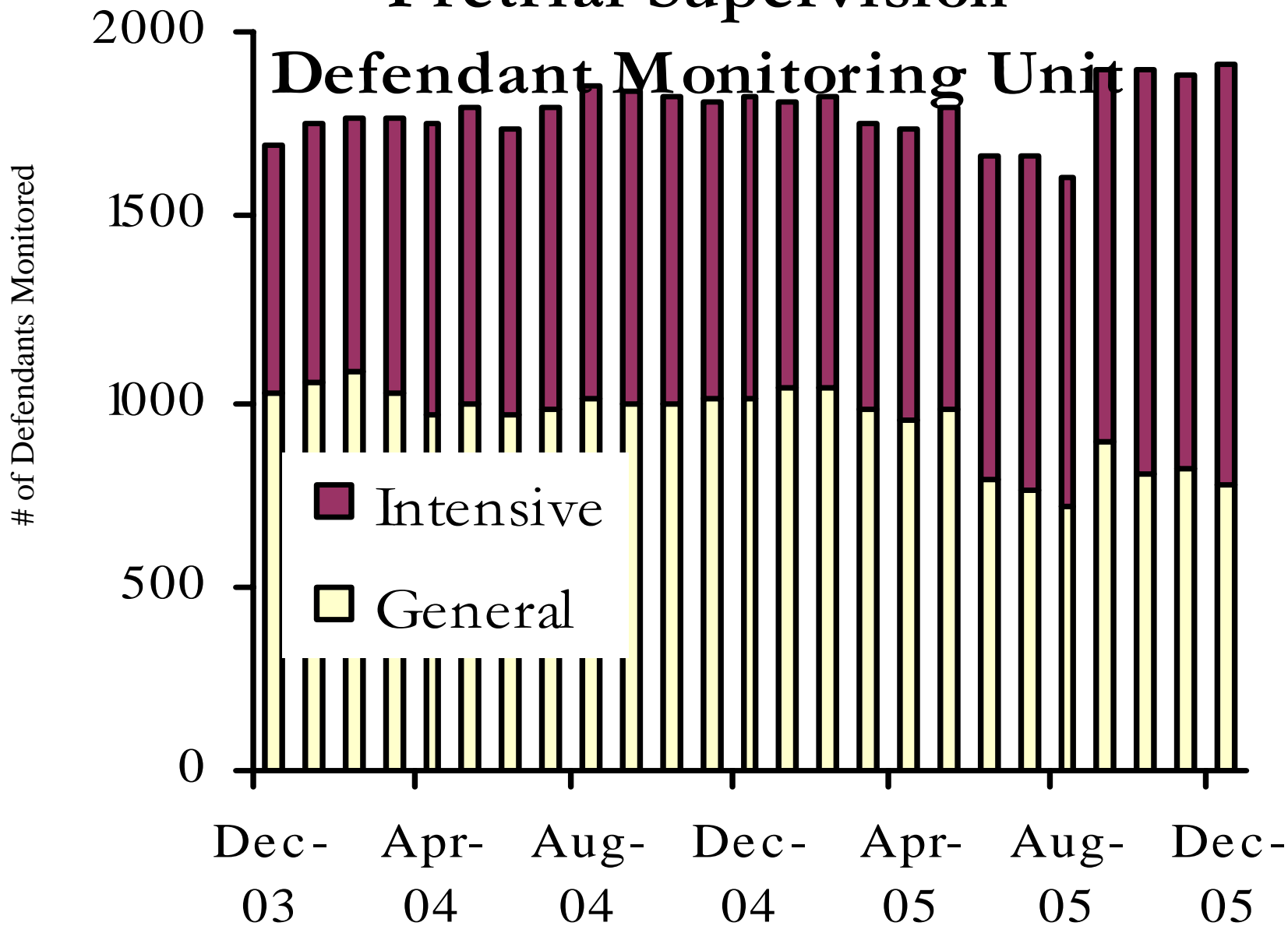
Superior Court Trials Completed



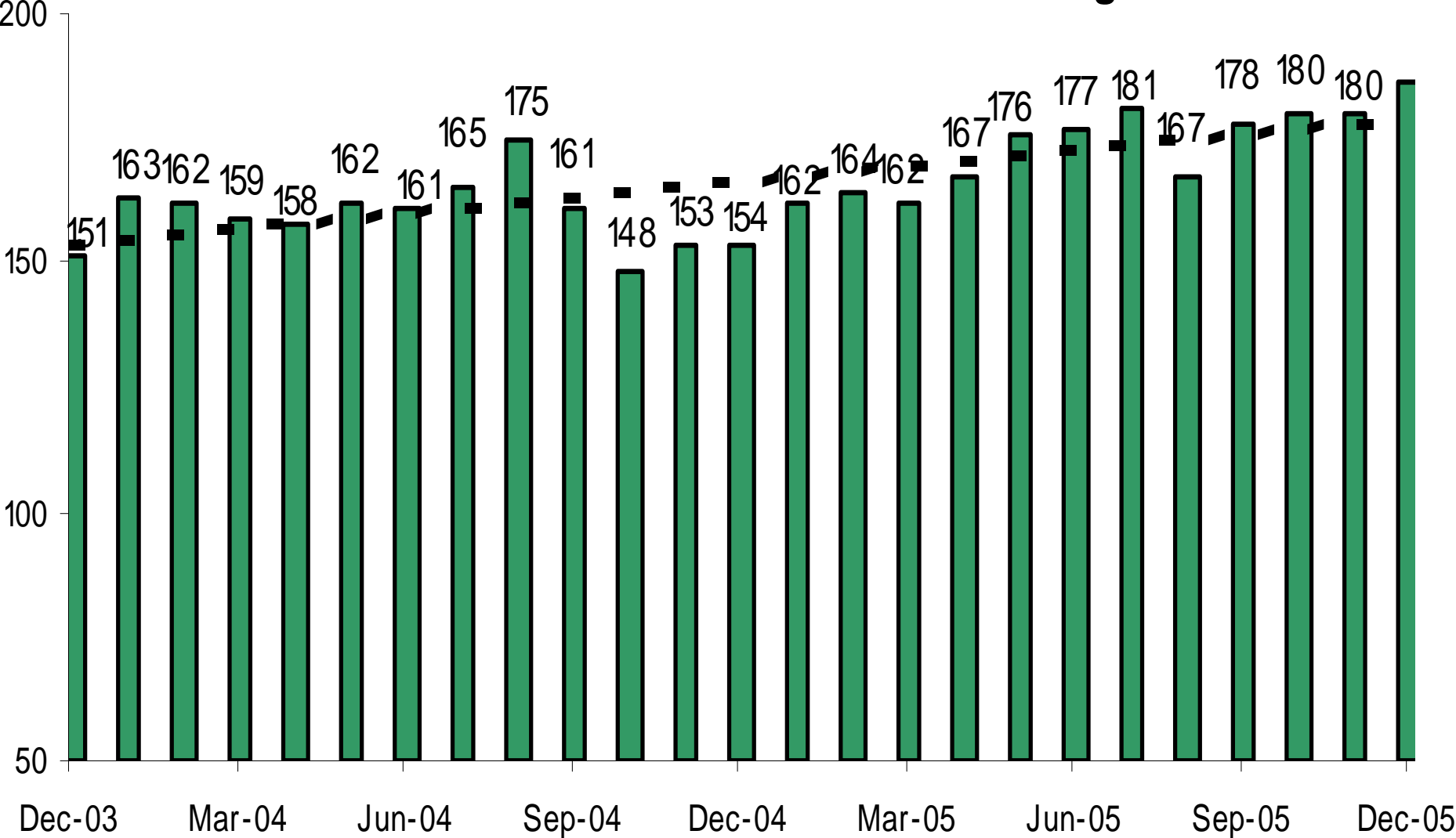
Active Pending Criminal Case Inventory



Pretrial Supervision



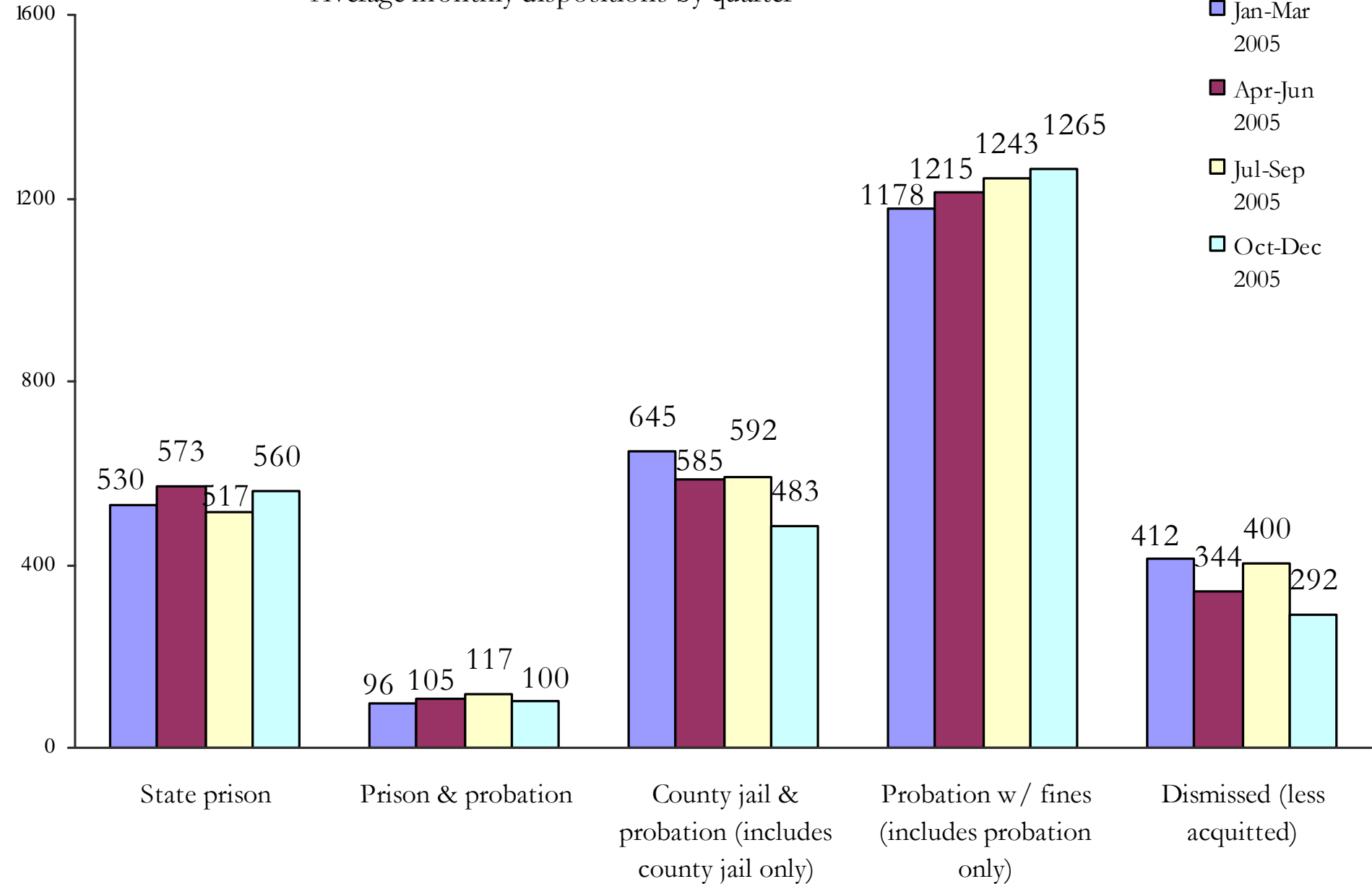
Pretrial Supervision Defendants on Electronic Monitoring



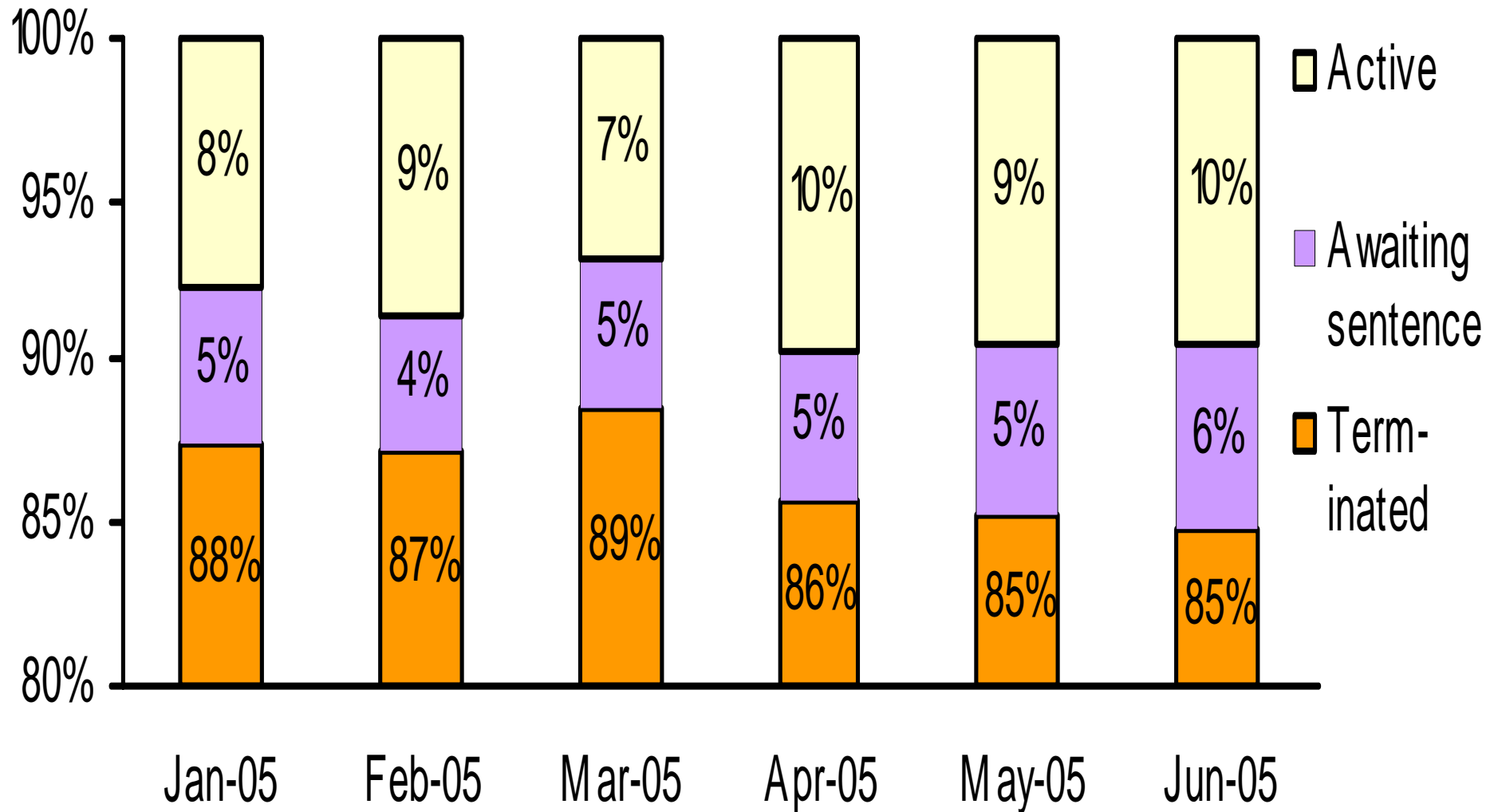
Disposition of Cases Terminated

Average monthly dispositions by quarter

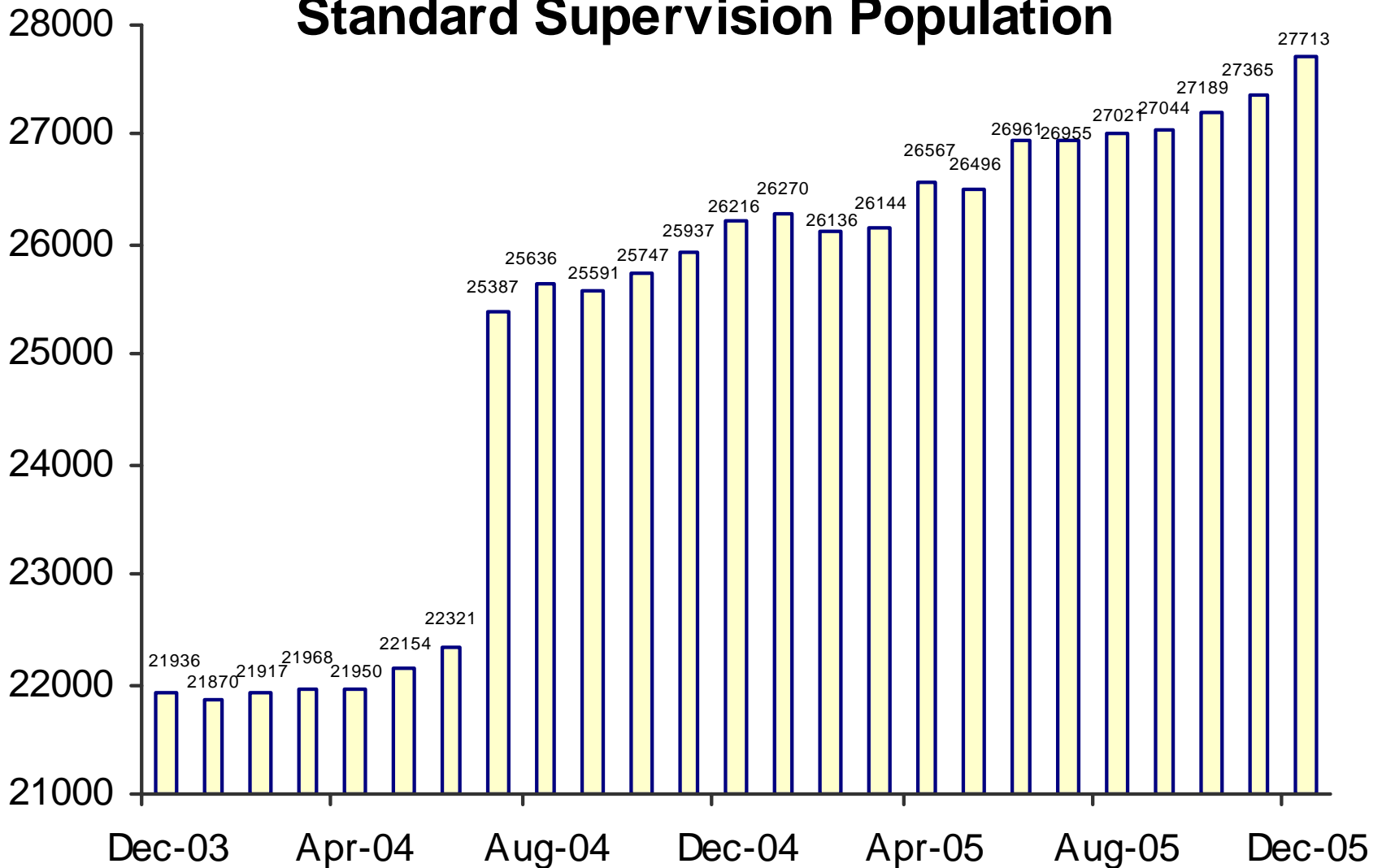
- Jan-Mar 2005
- Apr-Jun 2005
- Jul-Sep 2005
- Oct-Dec 2005



Status of Cases After 180 Days

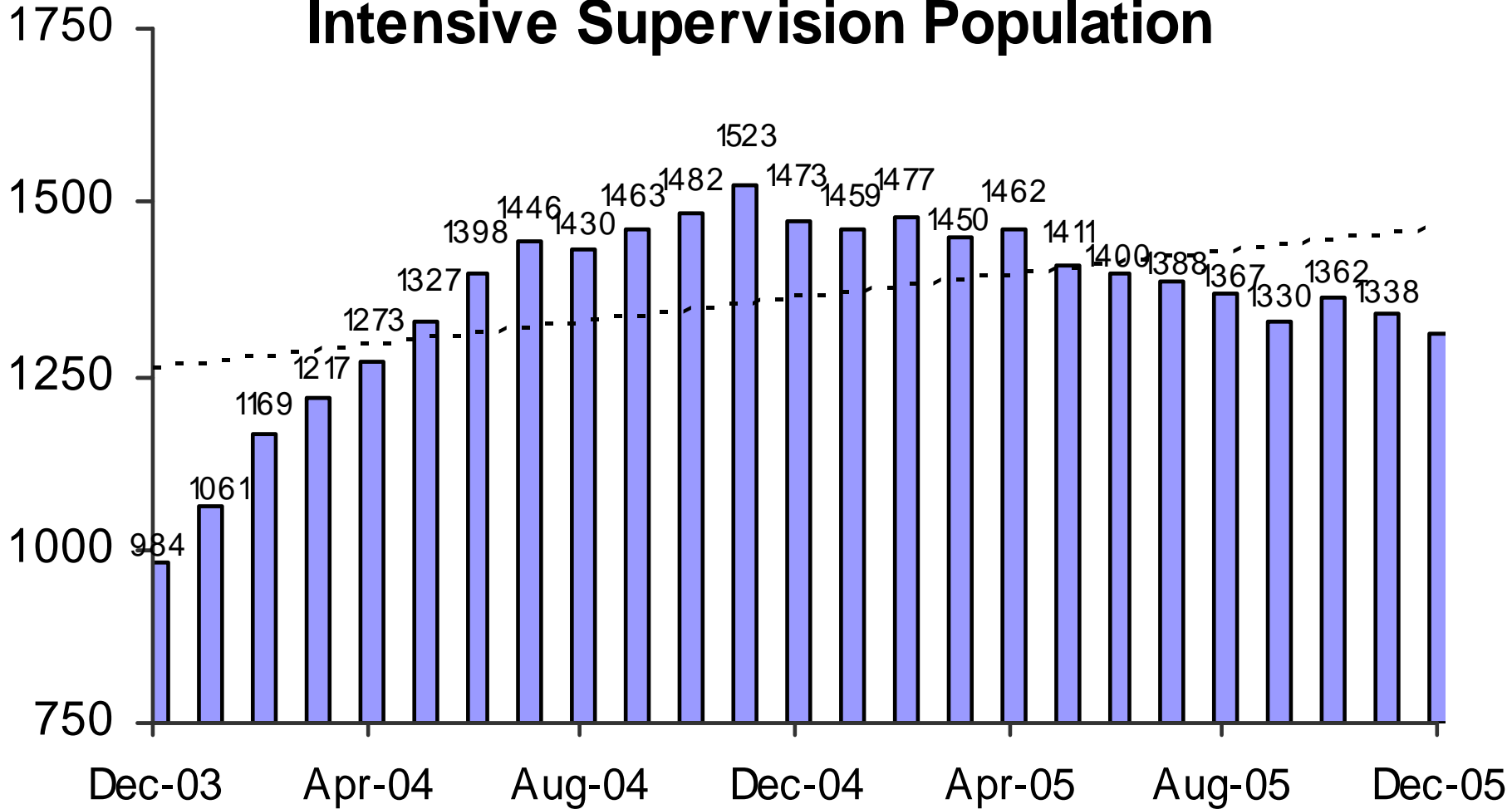


Adult Probation Standard Supervision Population

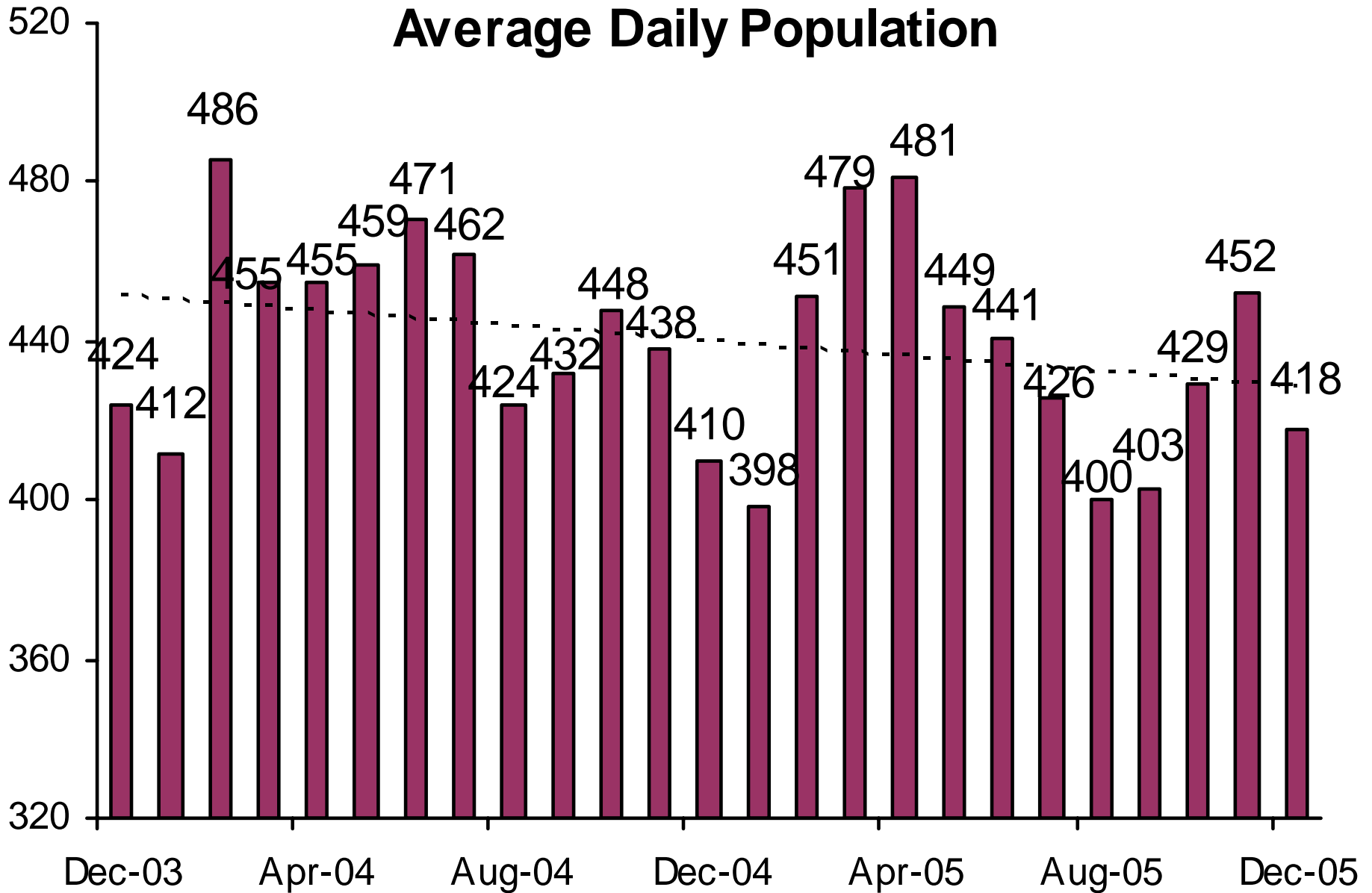


Interstate Compact and Report and Review caseloads are not included prior to July 2004. After July 2004, population as reported to the Board of Supervisors and JLBC is used.

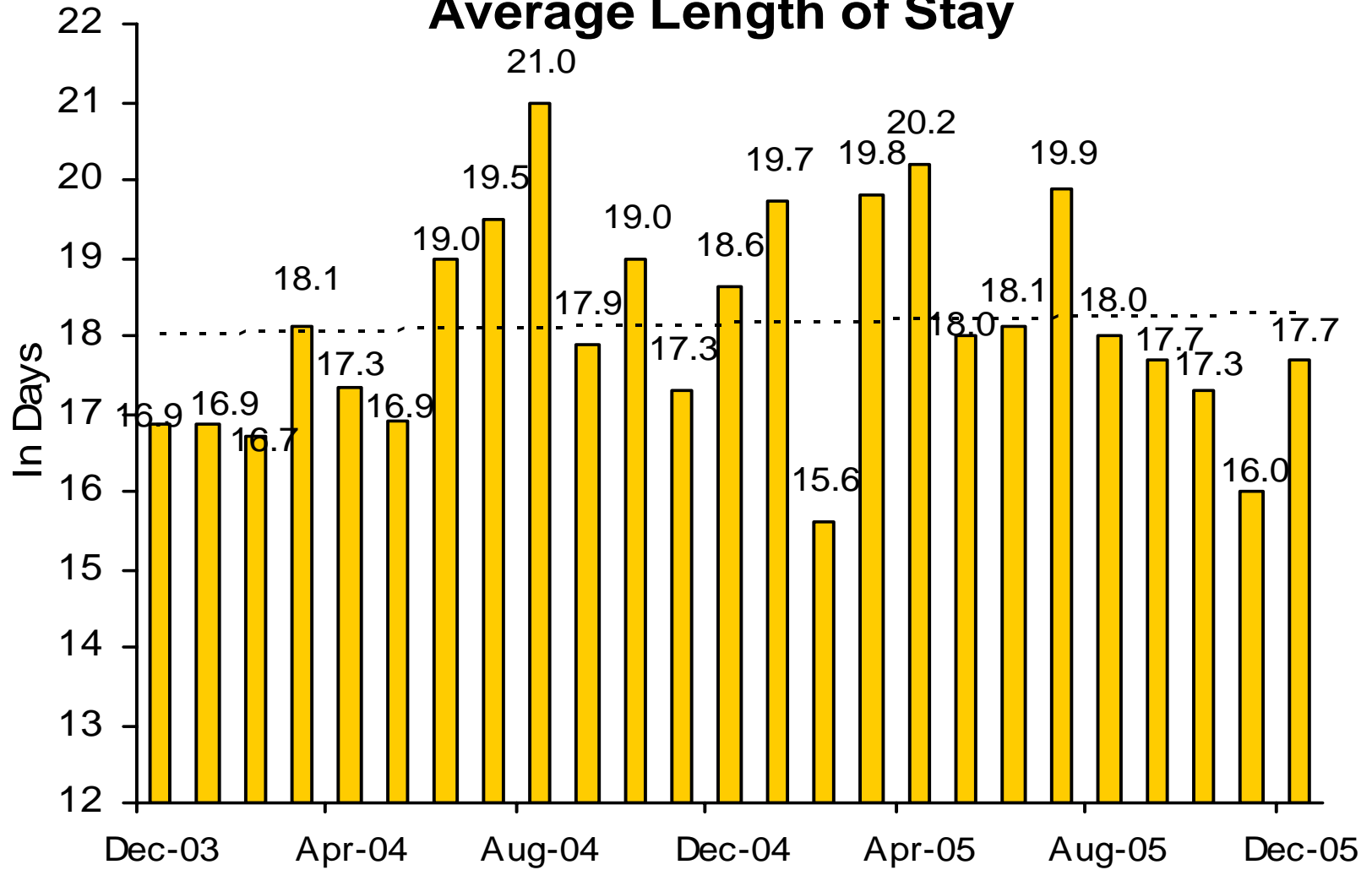
Adult Probation Intensive Supervision Population



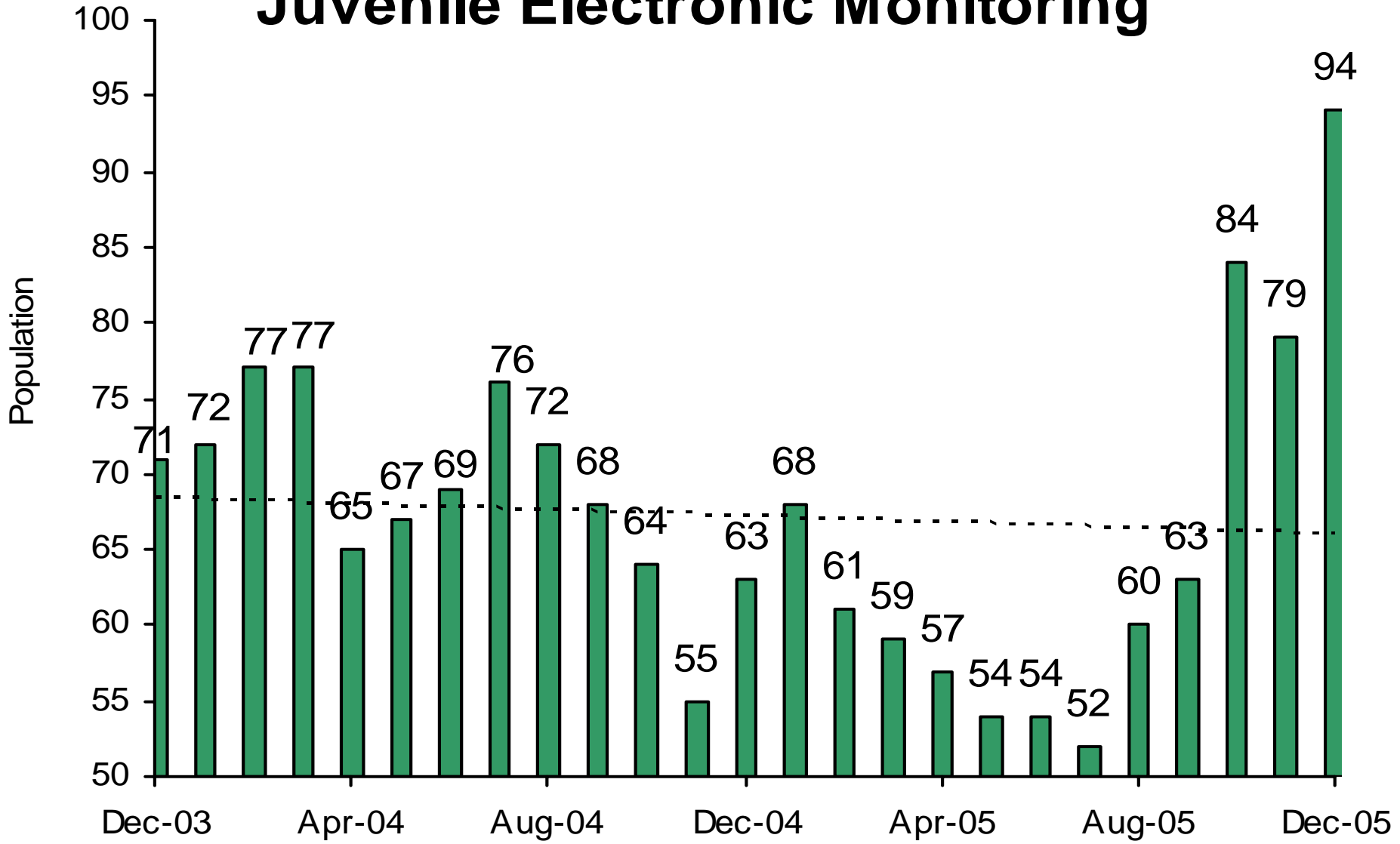
Juvenile Detention Average Daily Population



Juvenile Detention Average Length of Stay

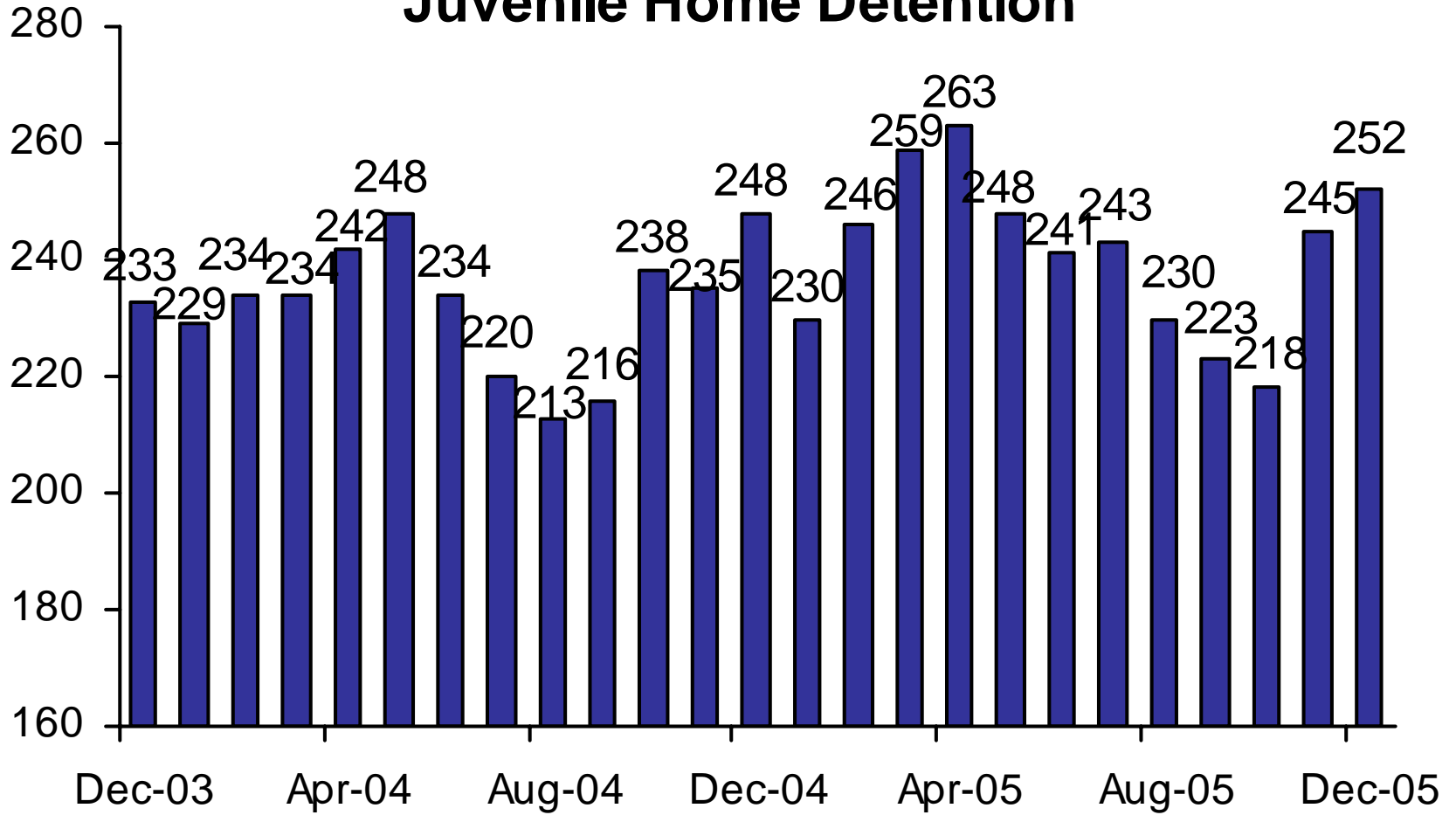


Juvenile Electronic Monitoring



The increase beginning in October 2005 is due to more accurate data collection.

Juvenile Home Detention



Juvenile Probation

■ # on standard probation ■ # on intensive probation

