





# Maricopa County

## Criminal Justice System

### *CRIMINAL JUSTICE SYSTEM NEWS – December 2007*

#### **Adult Incarceration**

**Bookings decreased** from November's 10,227 to December's 9,299. The **Average Daily Population decreased** 9,564 to 8,901. The **pretrial population decreased** in December (6,214) compared to November (6,540). The **sentenced and agency hold populations also decreased:** sentenced from 2,621 to 2,286 and agency holds from 354 to 349. **Overall ALOS increased** in December from 28.1 to 29.1 days; which is the highest since December 2005. **The ALOS for sentenced increased** from 28.4 to 30.2 days, while **the ALOS for agency holds increased** from 59.7 to 63.4 days. **Pretrial ALOS decreased** from 8.8 to 7.7 days.

#### **Superior Court Filings & Case Processing**

**Criminal filings increased** from November (3,017) to December (3,186). **Terminations decreased** from 3,178 to 2,517. The resulting clearance rate was 79.0%. **The active pending case inventory increased,** as it has every month since January, from 11,941 to 12,129 (most ever). **Filings into RCC decreased** in December (1,949) compared to November (1,957), while **filings into EDC increased** from 882 in November to 1,039 in December. **The number of trials decreased** from 68 in November to 49 in December. **The trial rate decreased,** from 2.3% to 1.5%.

#### **Justice Court Filings**

**Forcible detainer filings increased** from November (6,434) to December (6,689). Overall, filings decreased from November's (34,298) to December's (33,298).

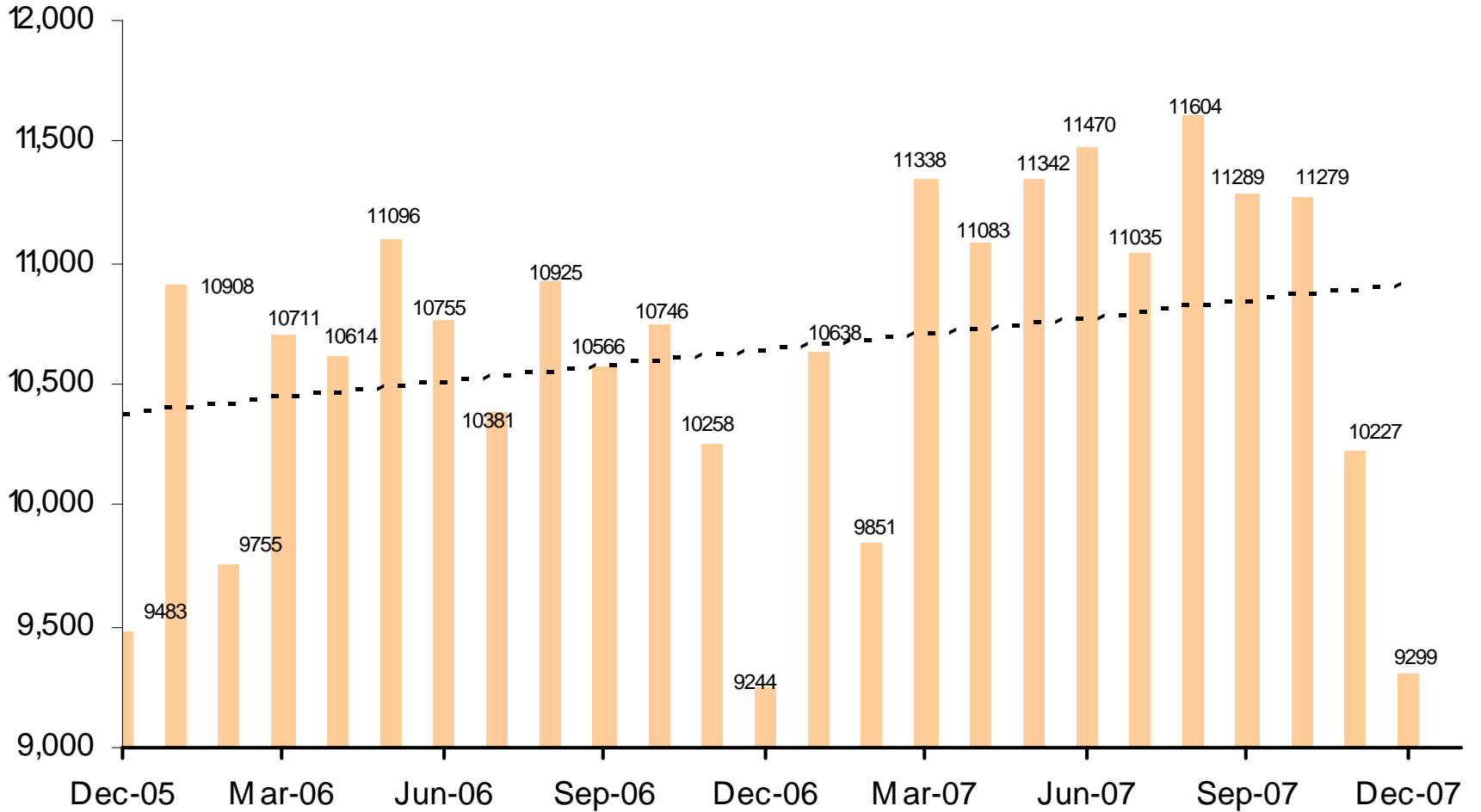
#### **Adult Probation**

**Pretrial general supervision decreased** November (880) to December (785); while **pretrial intensive supervision increased,** from 1,326 in November to 1,564 in December. **Electronic monitoring decreased** from 253 to 242. **Levels of standard probation supervision decreased** from 30,694 to 29,523, while **levels of intensive probation supervision also decreased** from 1,104 in November to 1,081 in December.

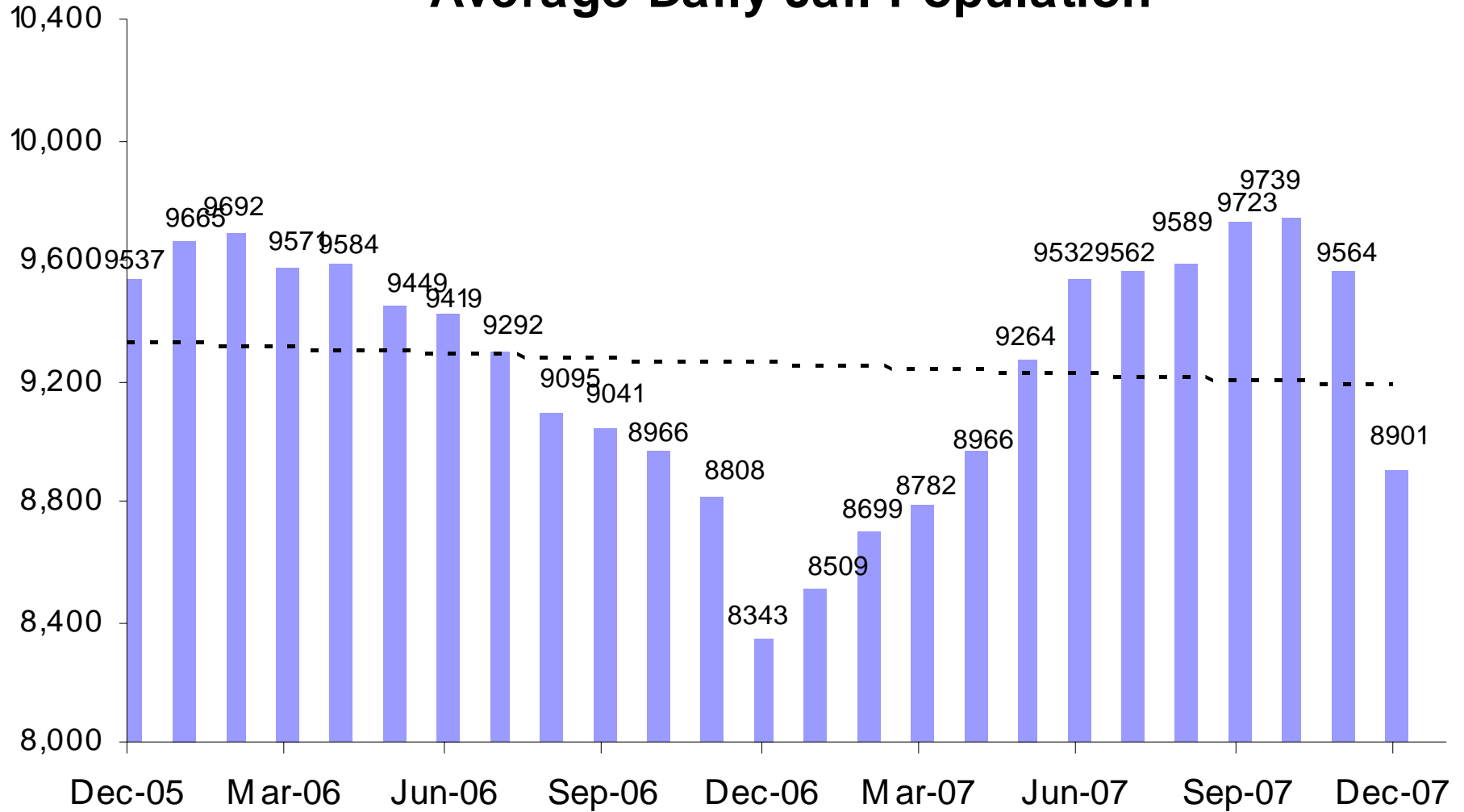
#### **Juvenile Detention and Probation**

\*\*\*Please note – due to conversion to iCIS database, December data is not available.\*\*\*

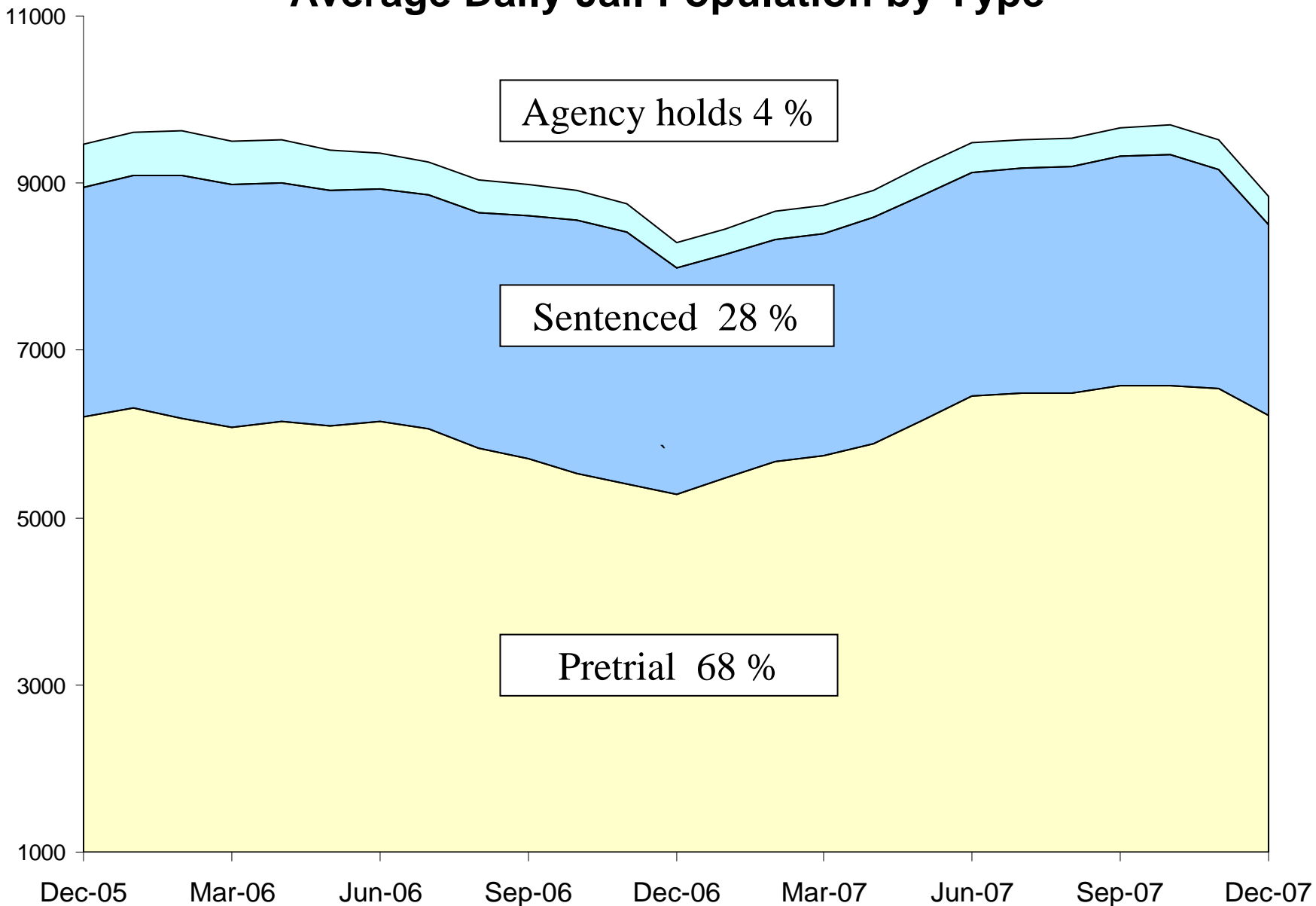
# Jail Bookings



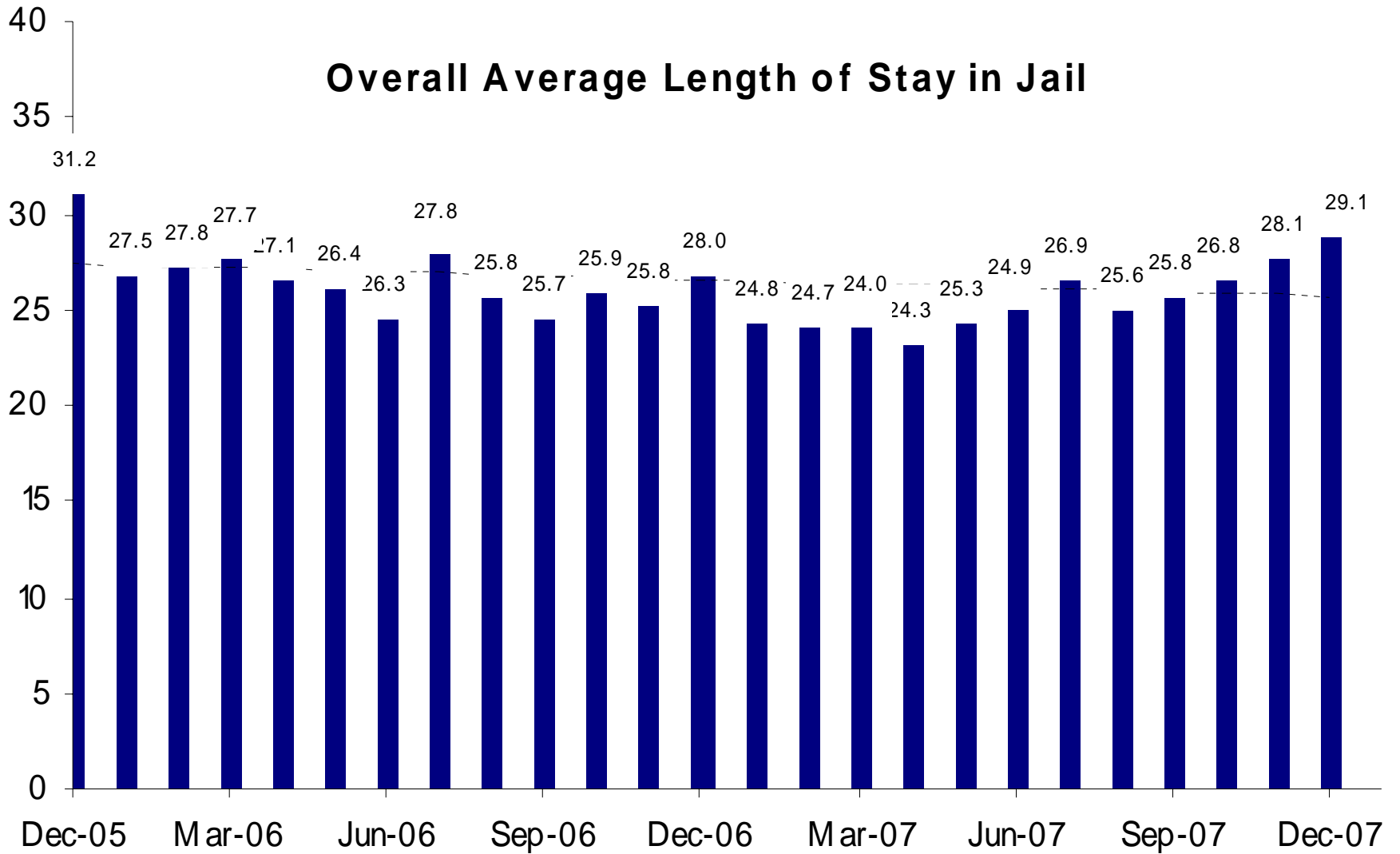
# Average Daily Jail Population



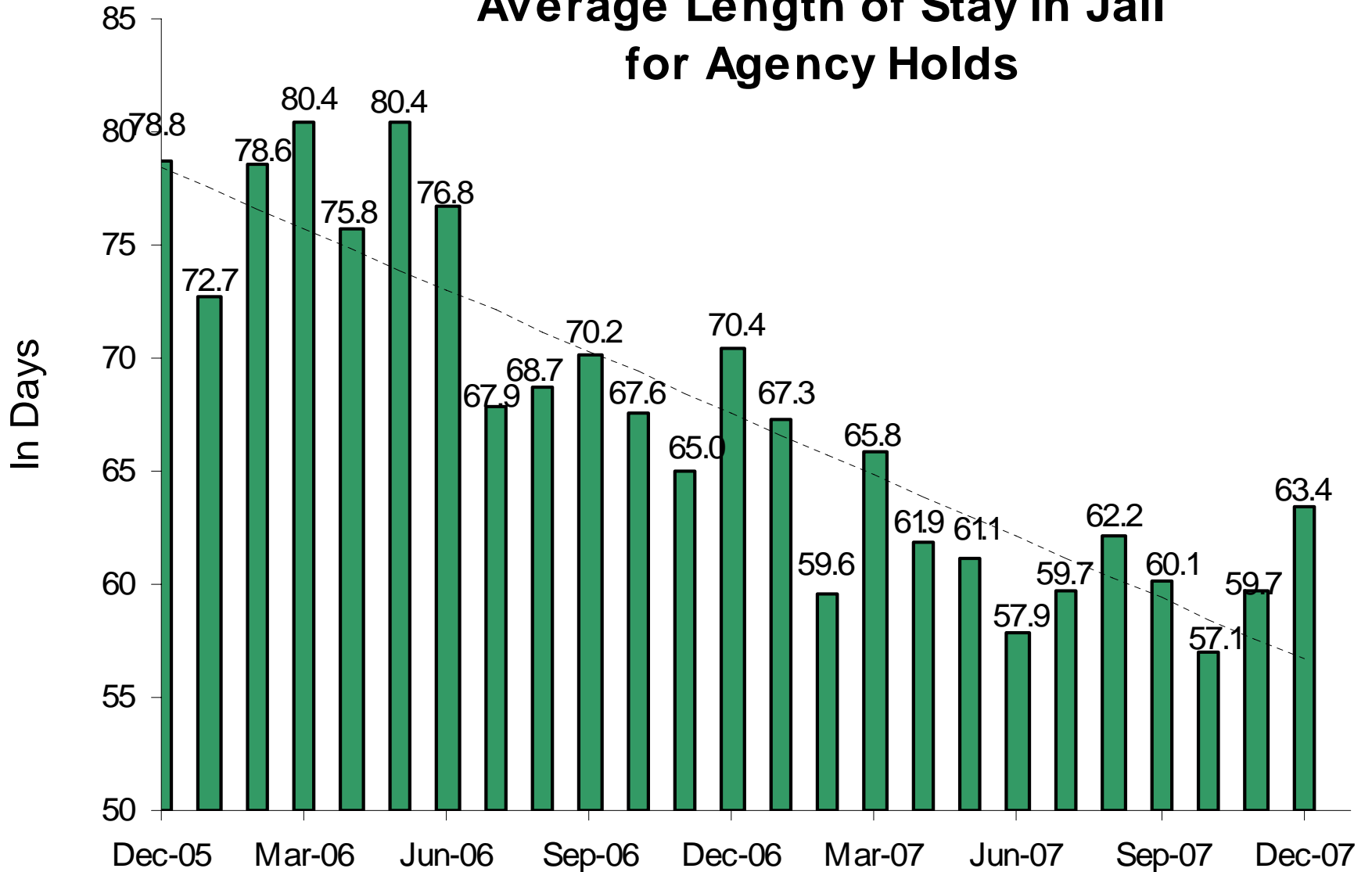
# Average Daily Jail Population by Type



# Overall Average Length of Stay in Jail

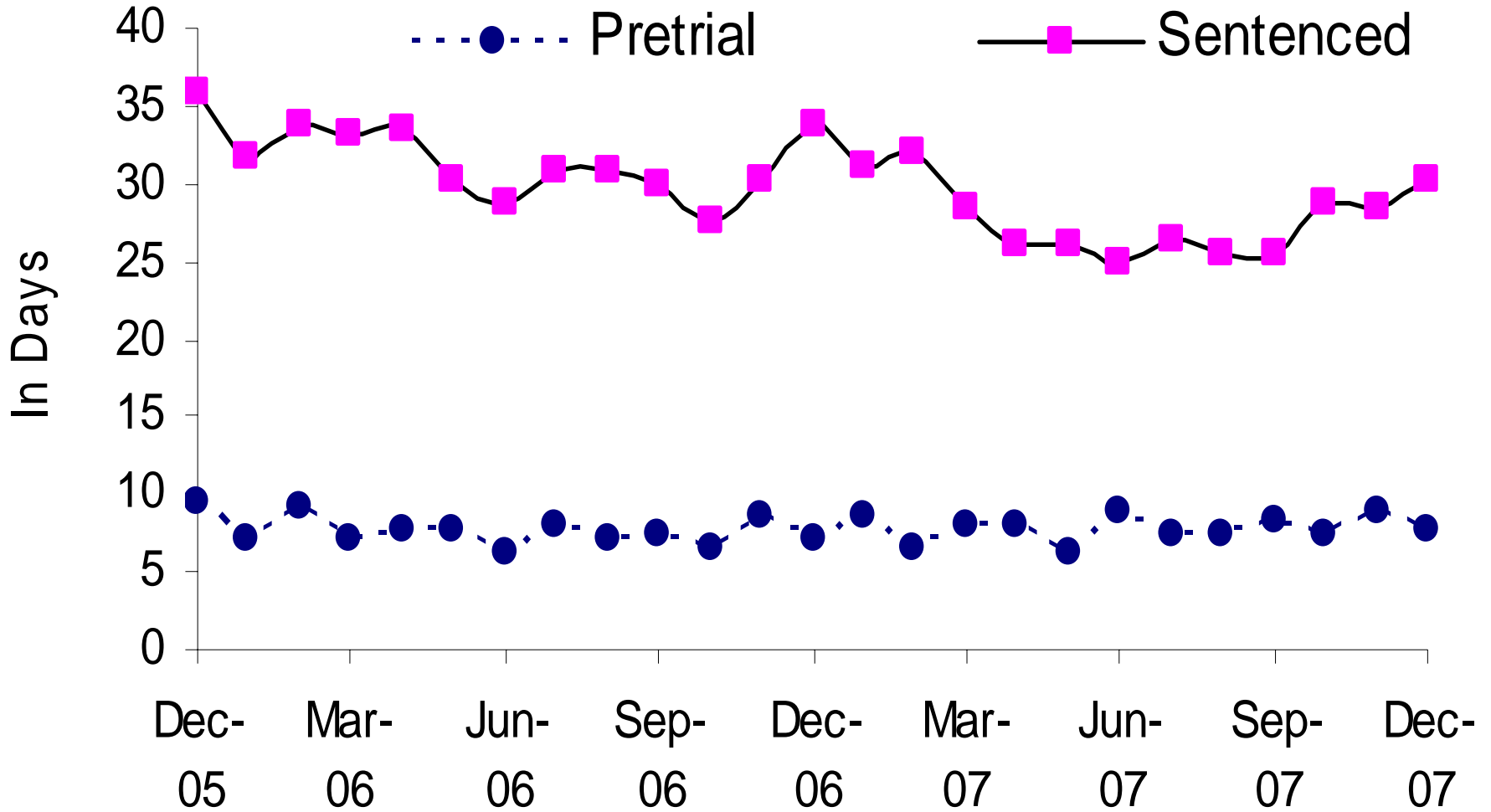


# Average Length of Stay in Jail for Agency Holds



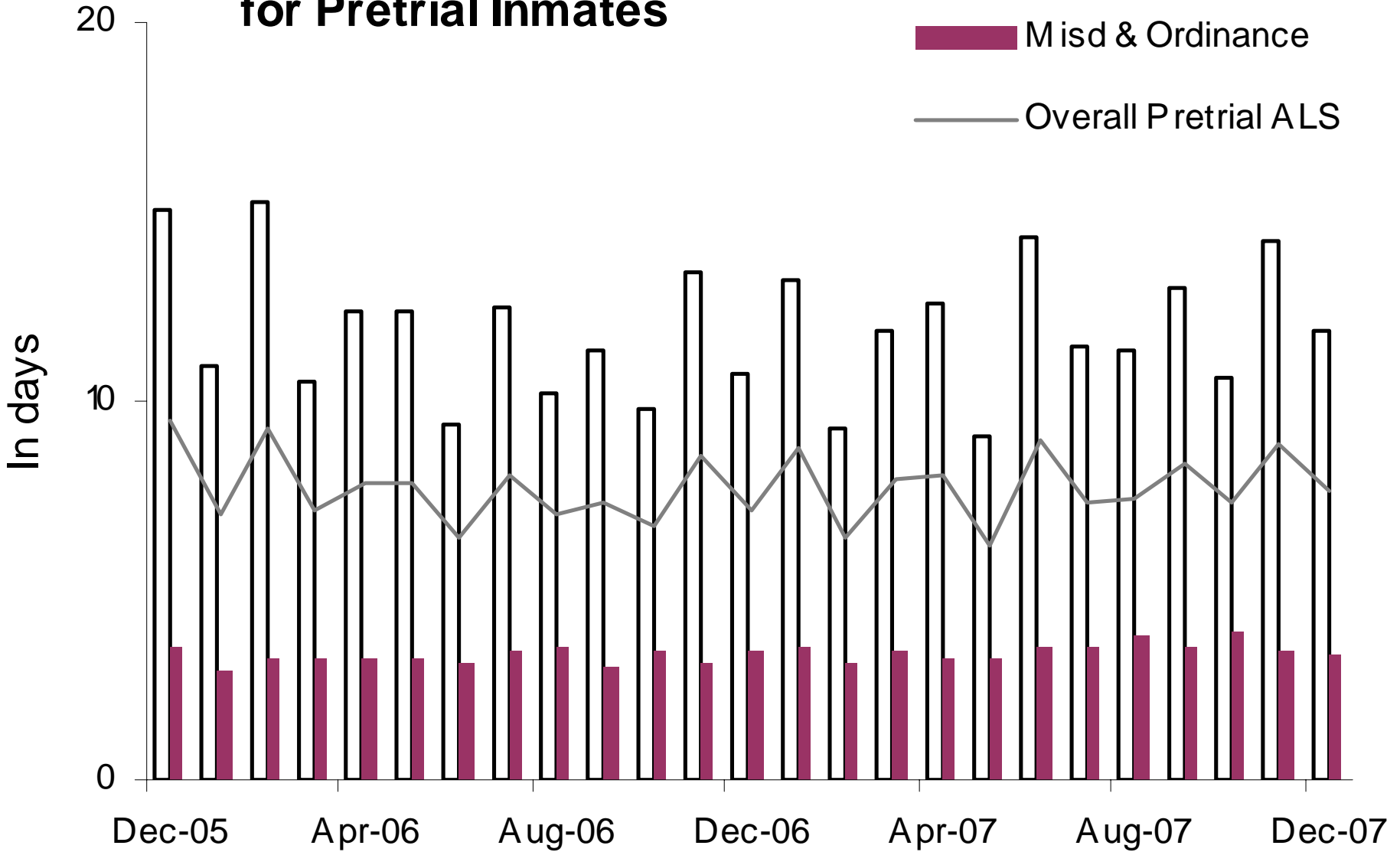
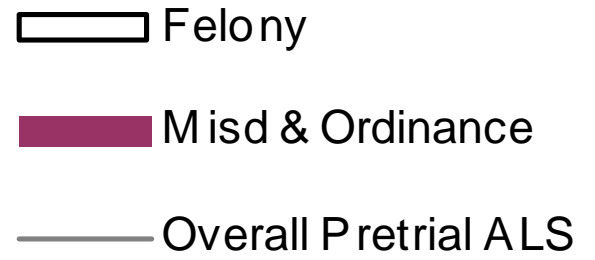
54% Dept of Corrections, 26% Federal agencies, 20% other

# Average Length of Stay in Jail Pretrial vs Sentenced Population

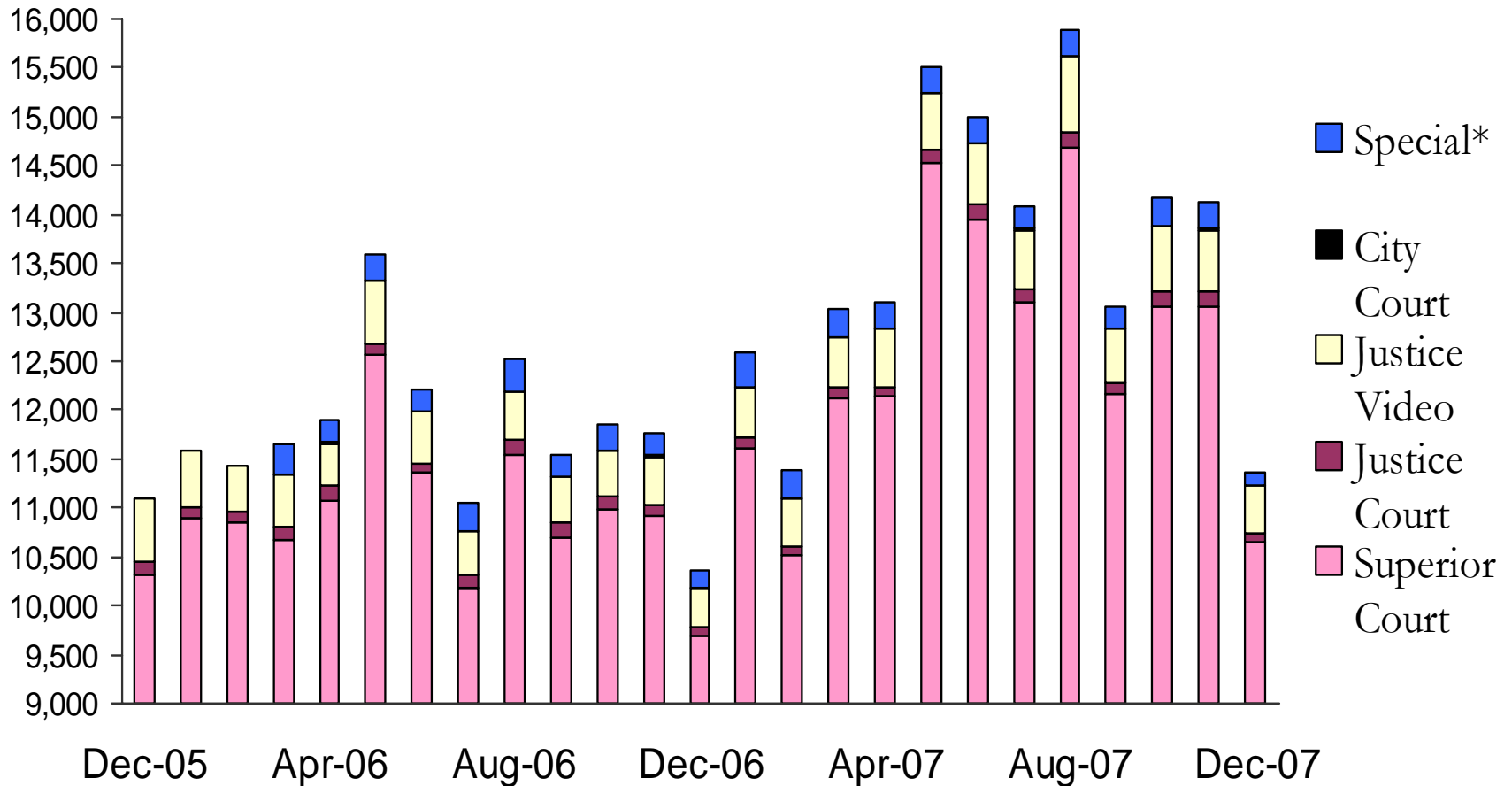




# Average Length of Stay in Jail for Pretrial Inmates



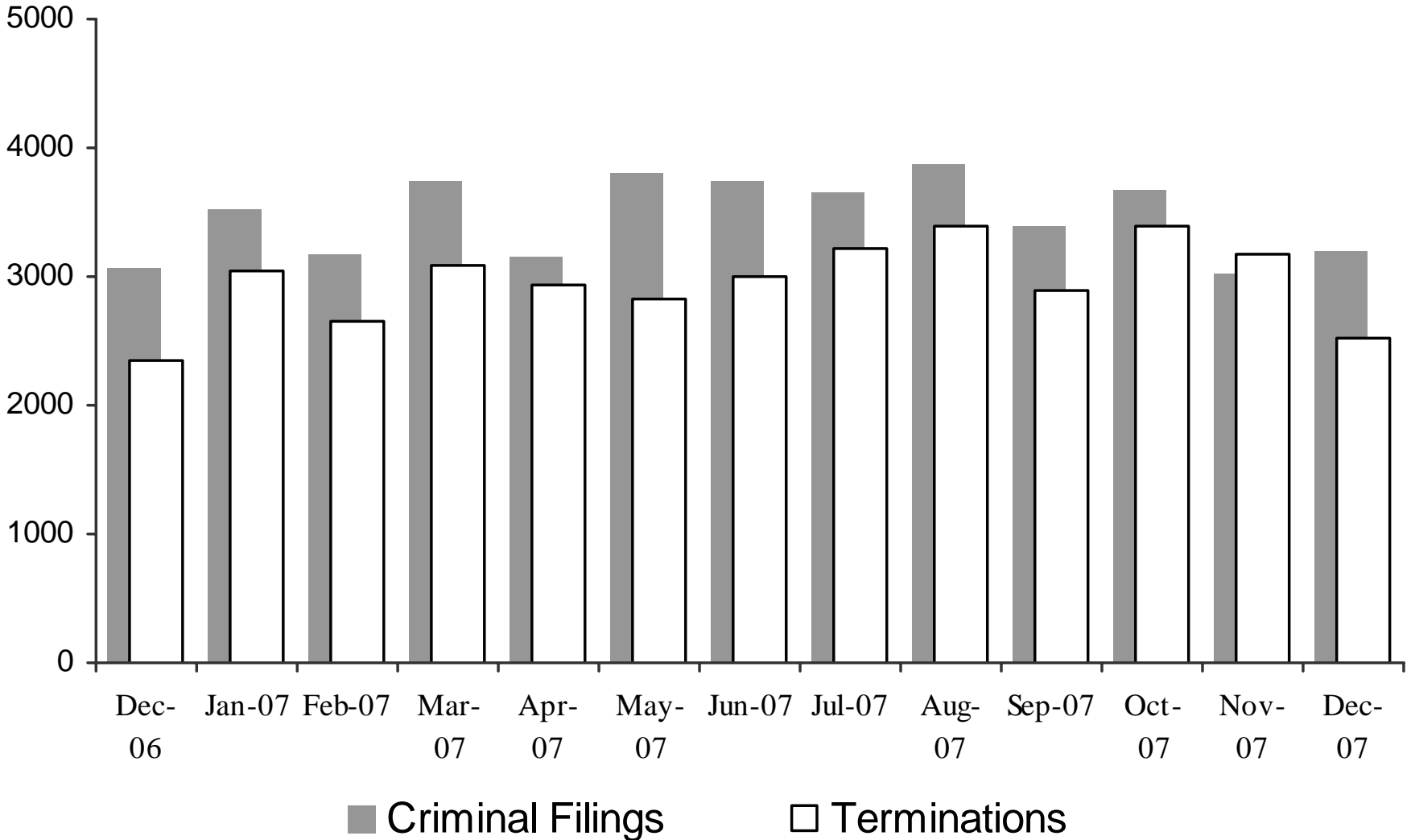
# Sheriff's Office Transports for Inmate Court Appearances



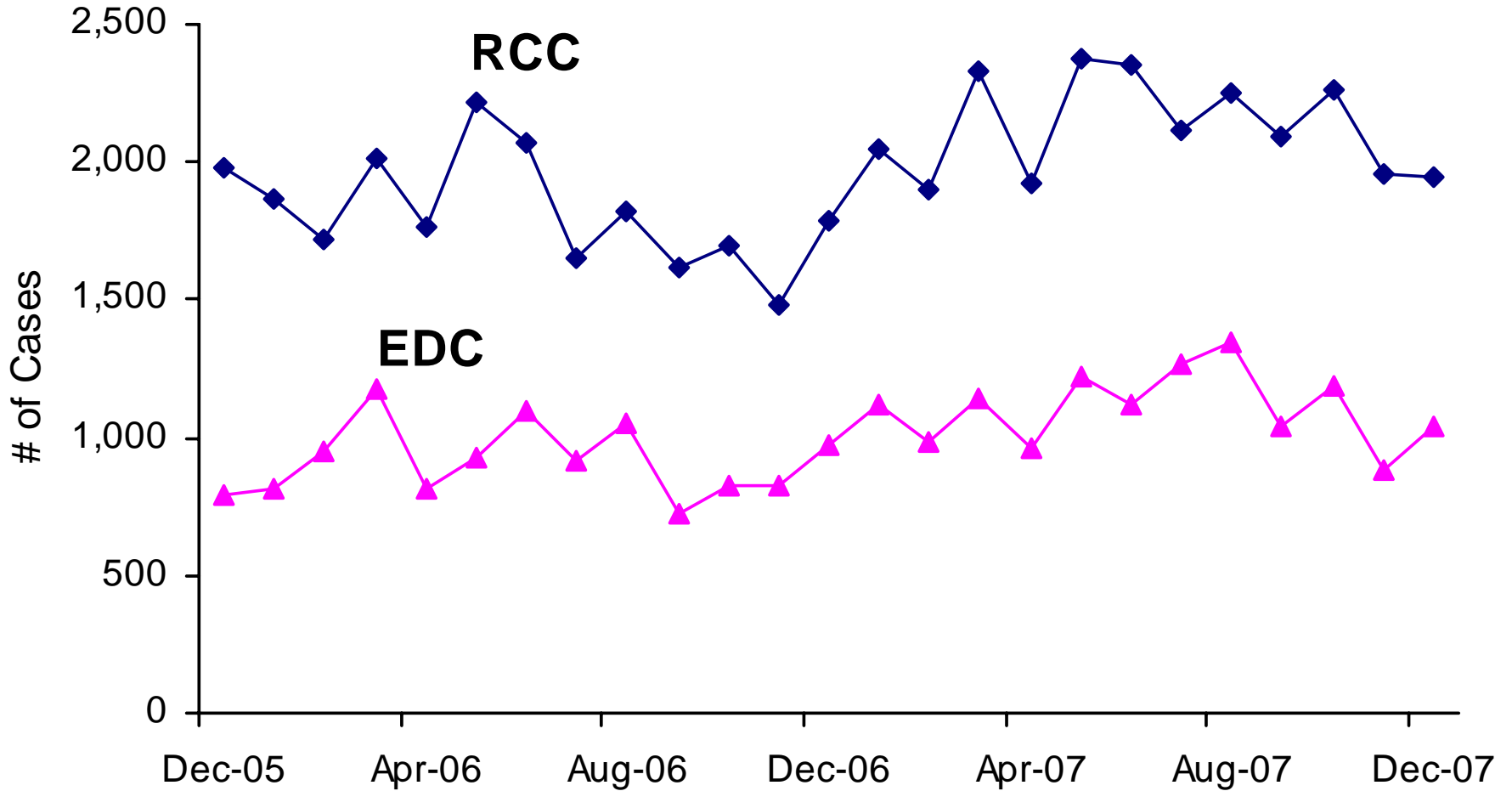
*\*“Special” cases added in March 2006 include Downtown Remands, SEJD Remands, and SEJD Unscheduled.*

# Superior Court Filings and Terminations

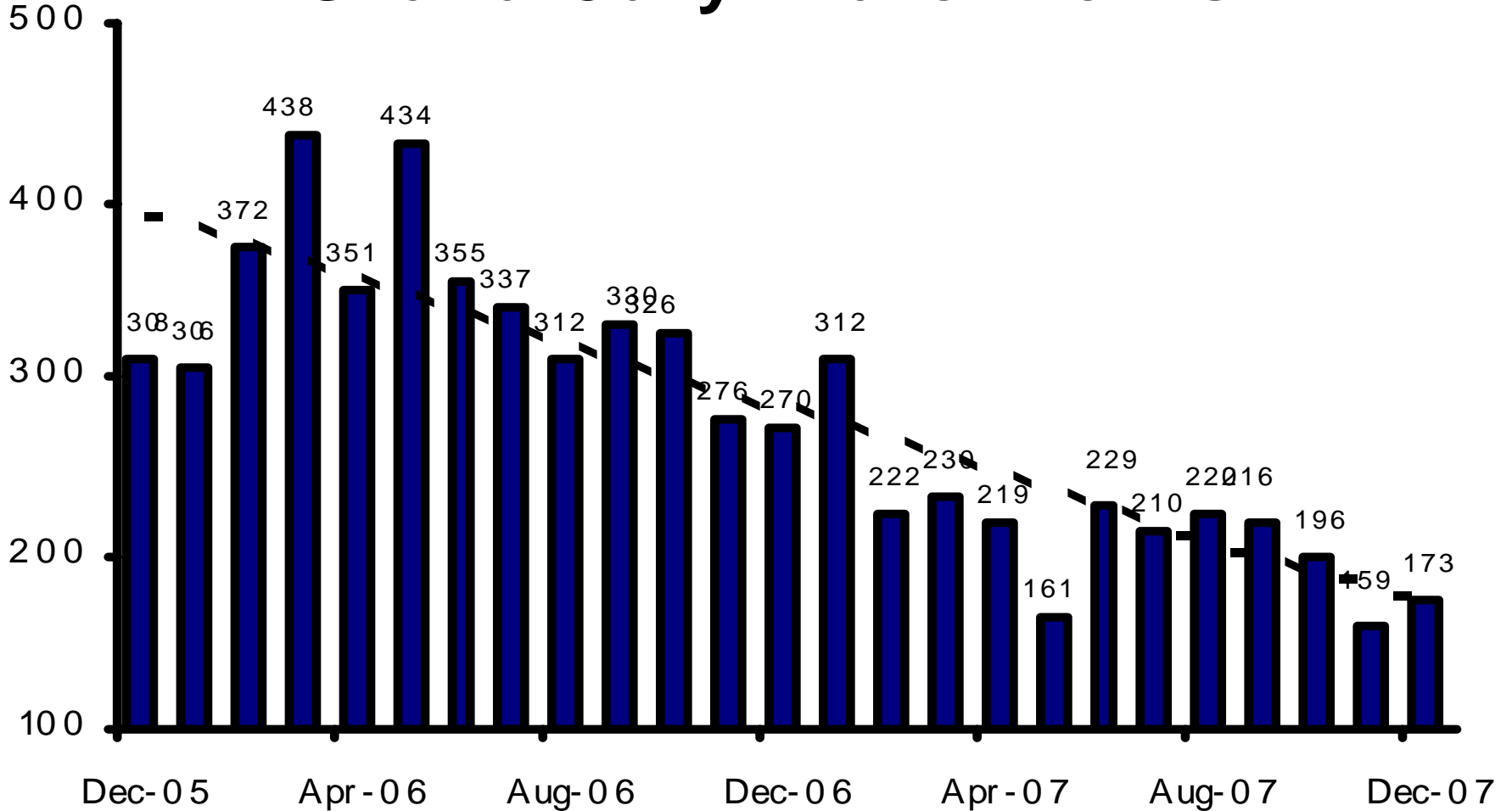
Direct Filing began in May 2002



# Direct Complaints into Superior Court

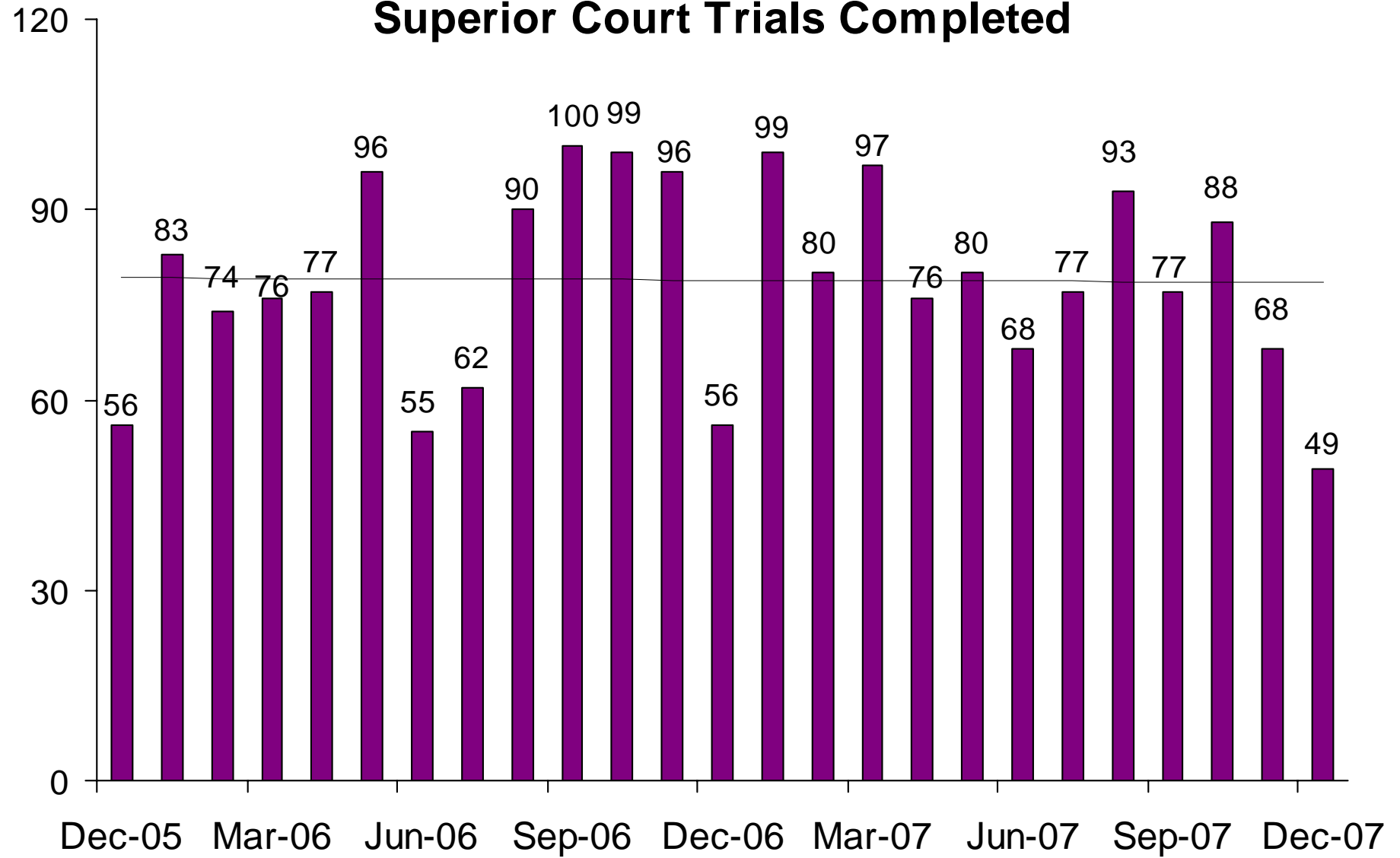


# Grand Jury Indictments

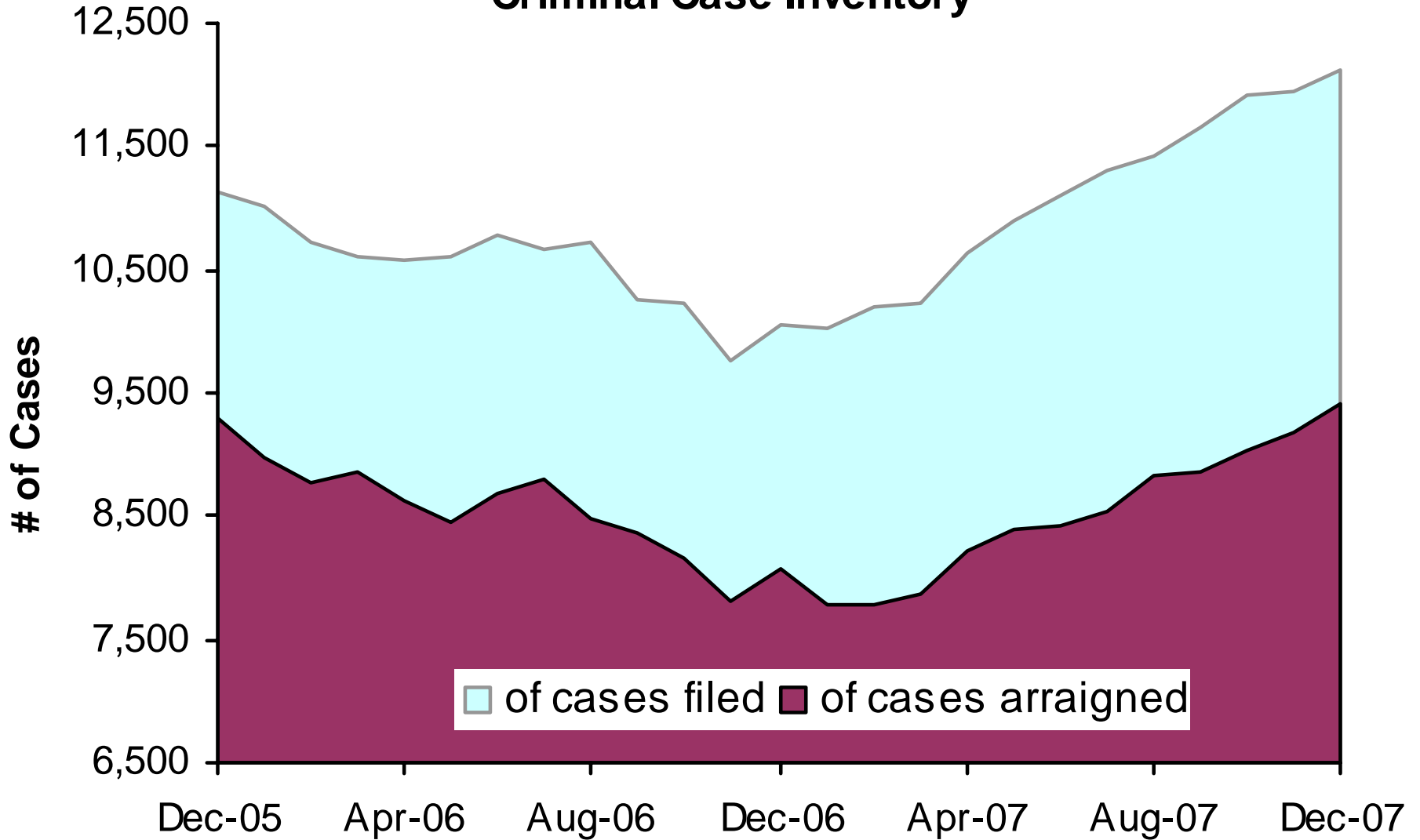


These numbers do not include notices of supervening indictments, non-EDC direct complaints, and juvenile direct complaints.

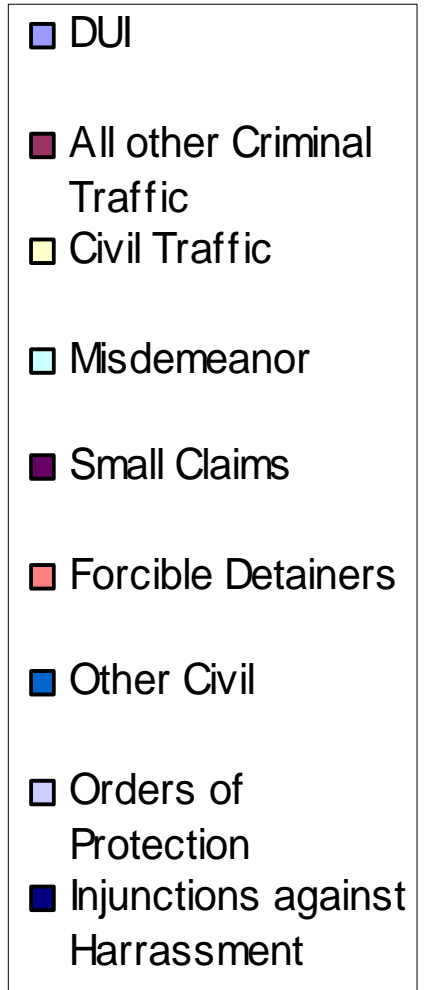
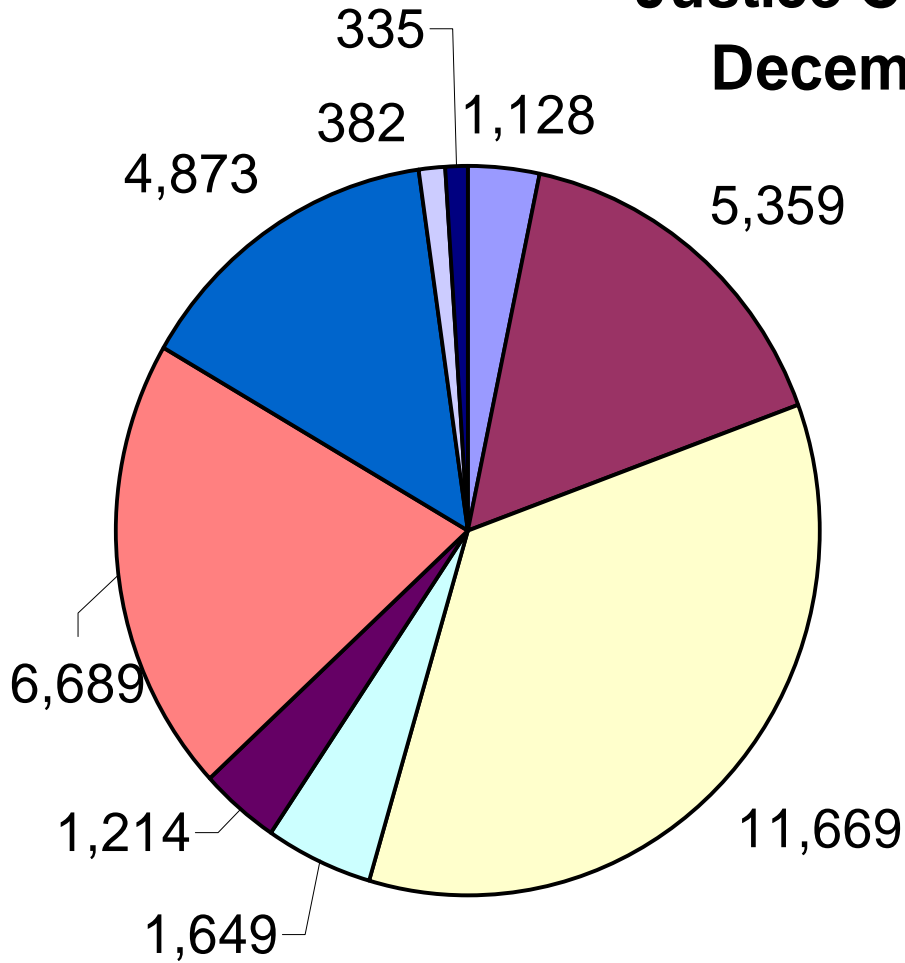
# Superior Court Trials Completed



# Active Pending Criminal Case Inventory



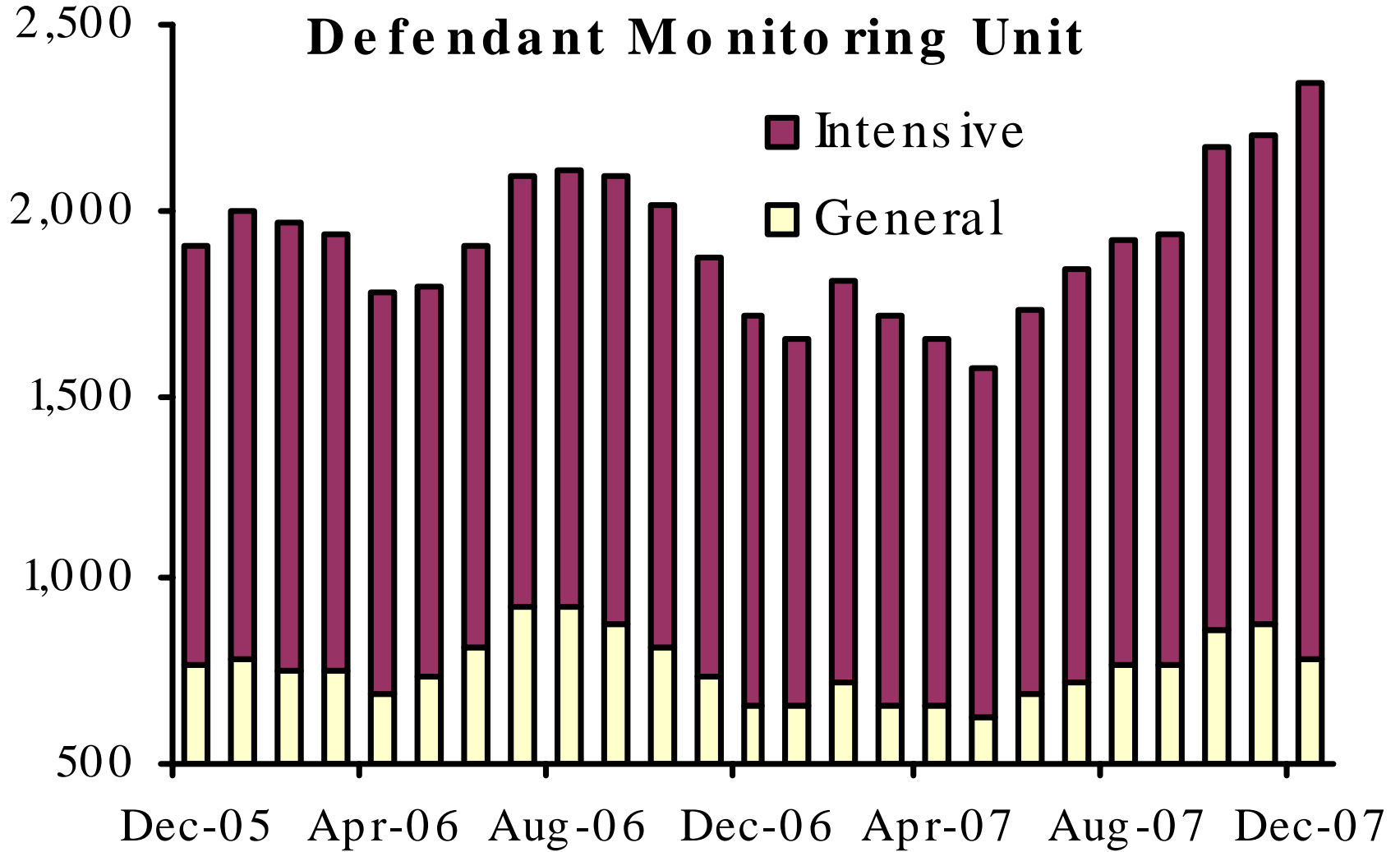
# Justice Court Filings December 2007



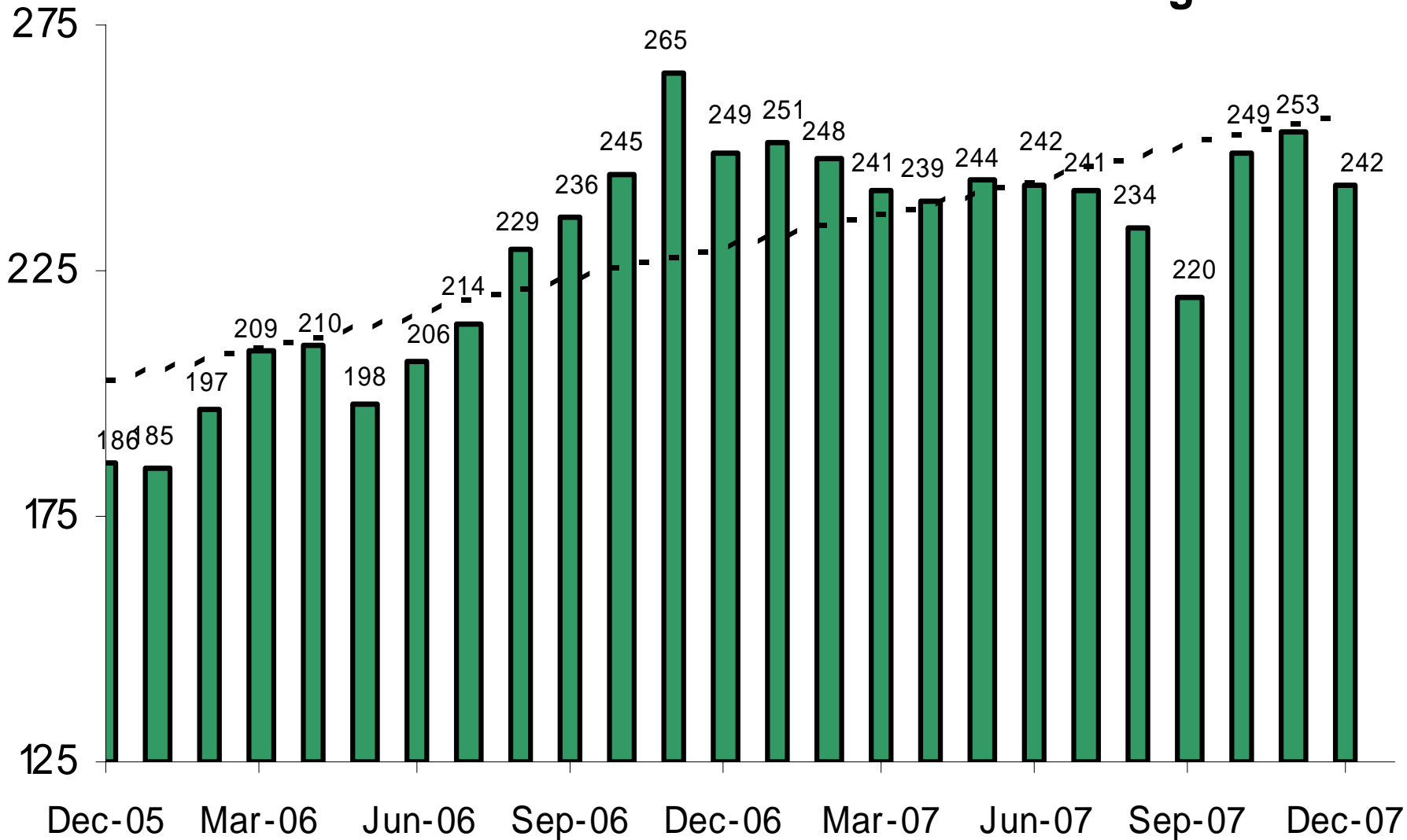


# Pretrial Supervision Defendant Monitoring Unit

# of Defendants Monitored

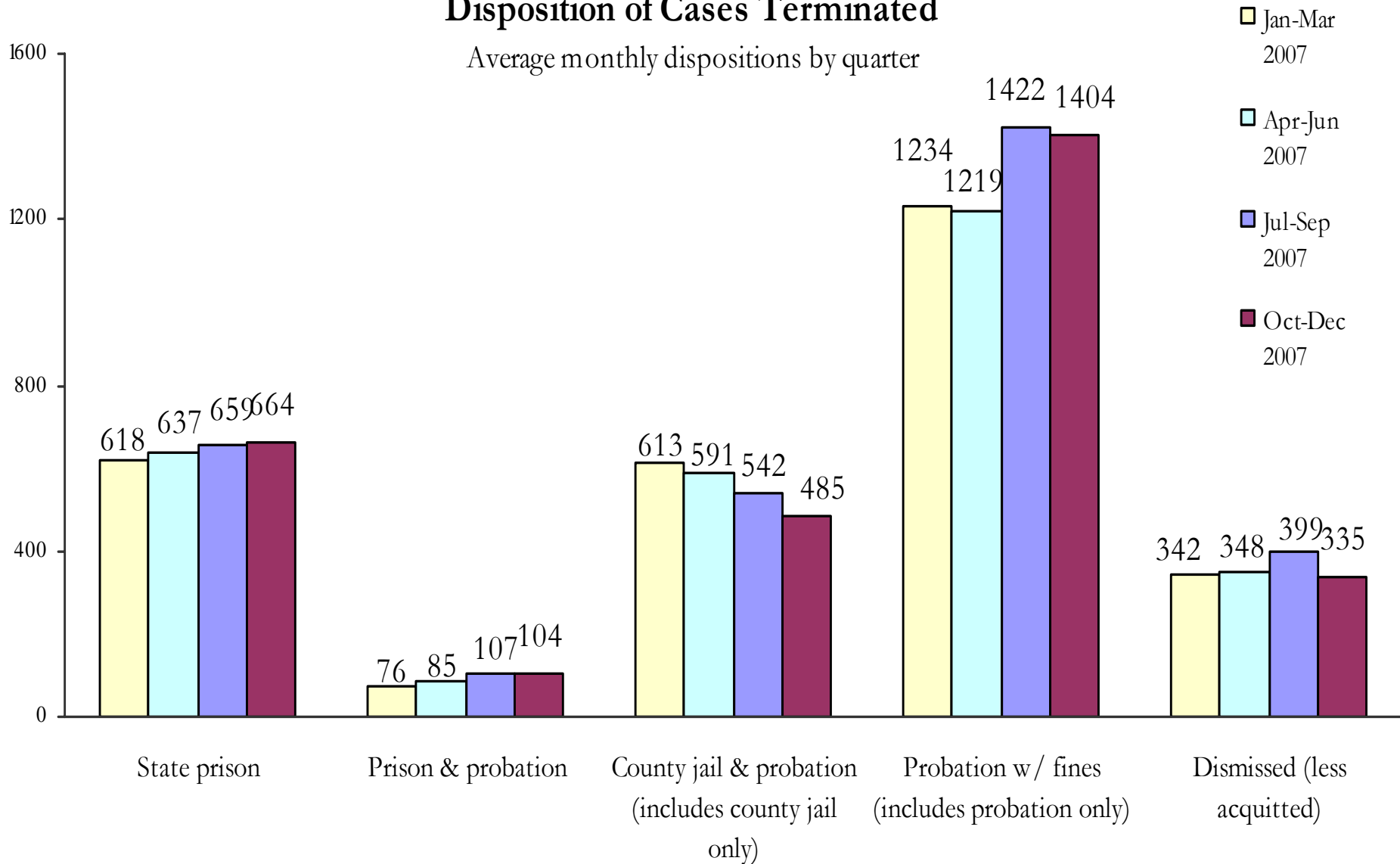


# Pretrial Supervision Defendants on Electronic Monitoring

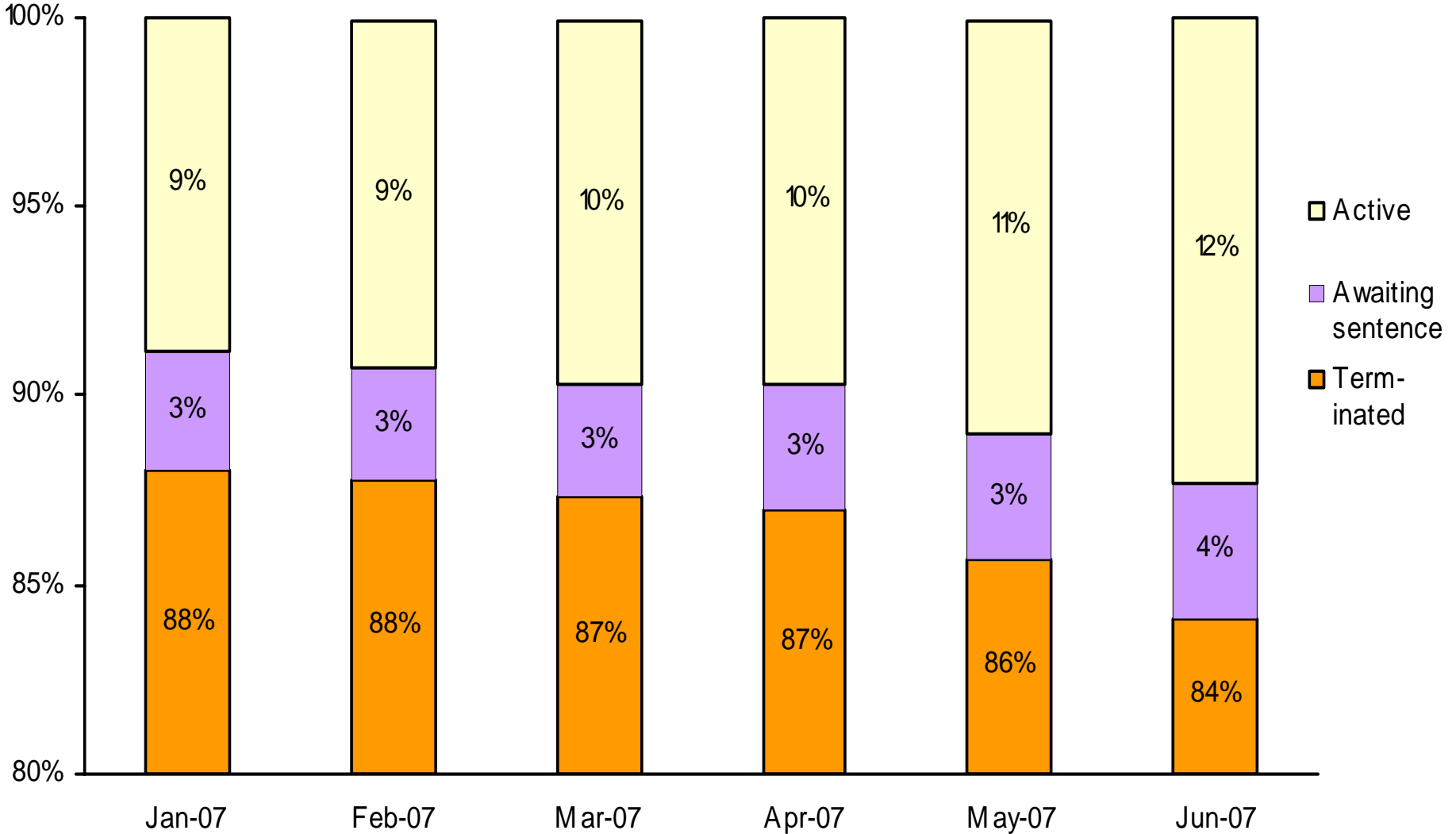


# Disposition of Cases Terminated

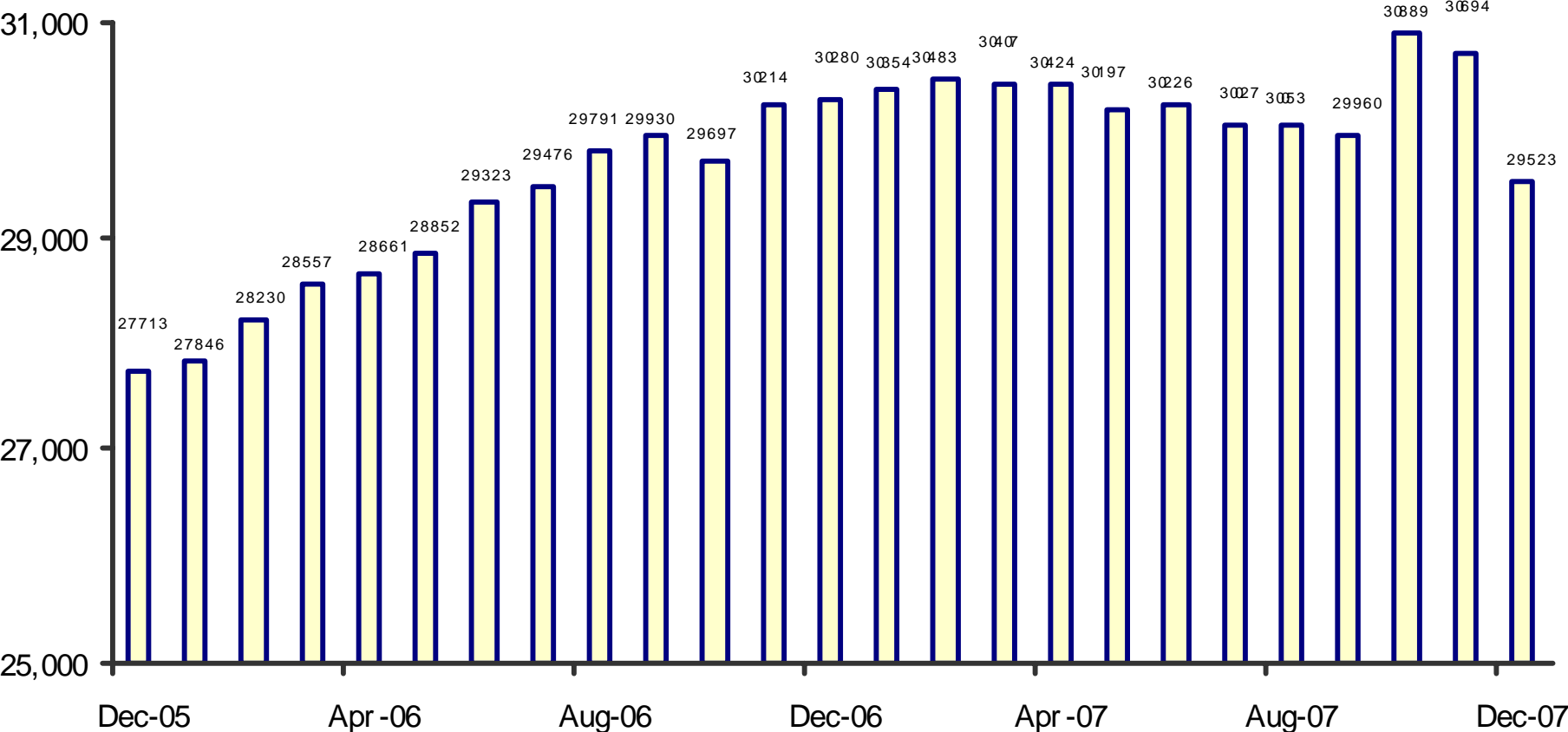
Average monthly dispositions by quarter



### Status of Cases After 180 Days

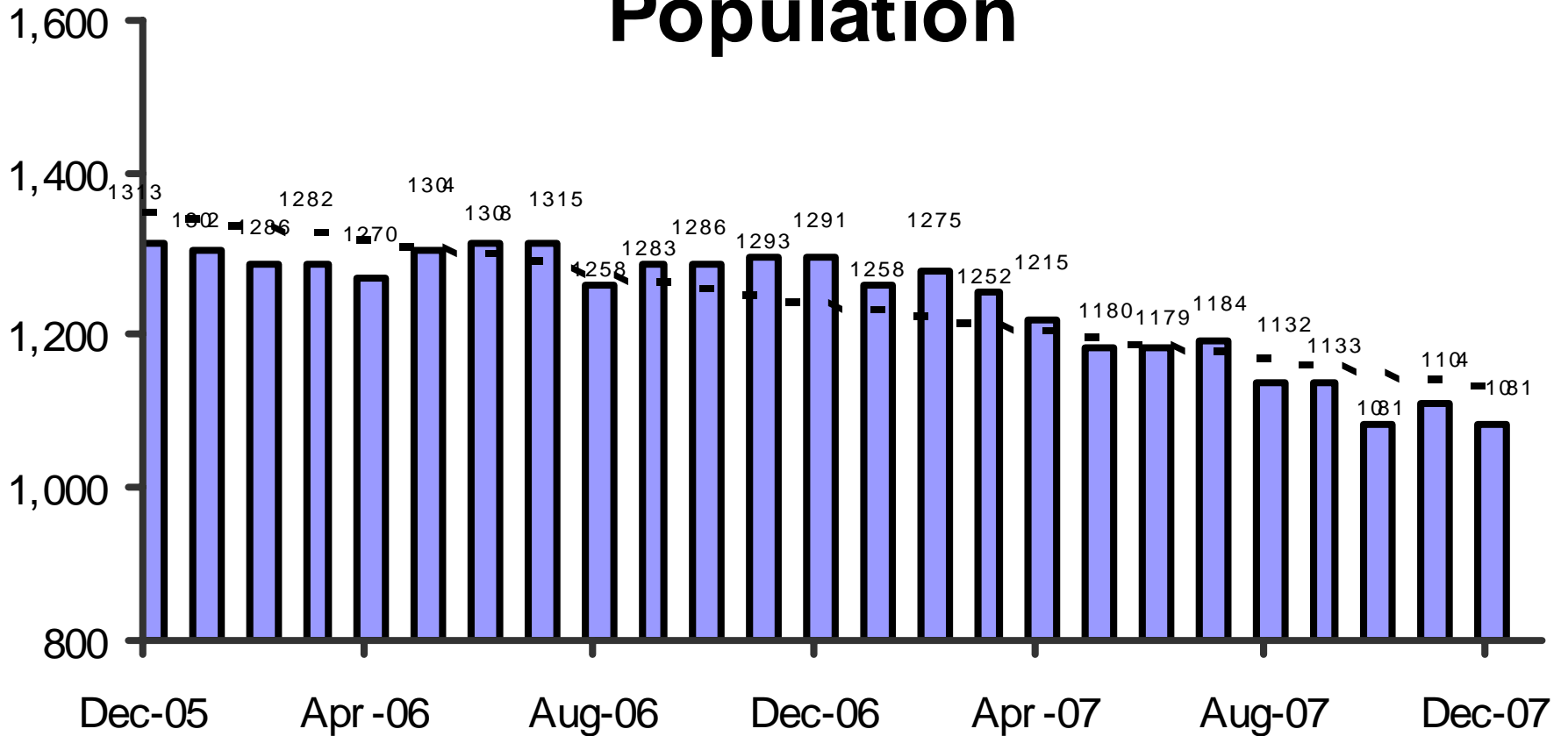


# Adult Probation Standard Supervision Population

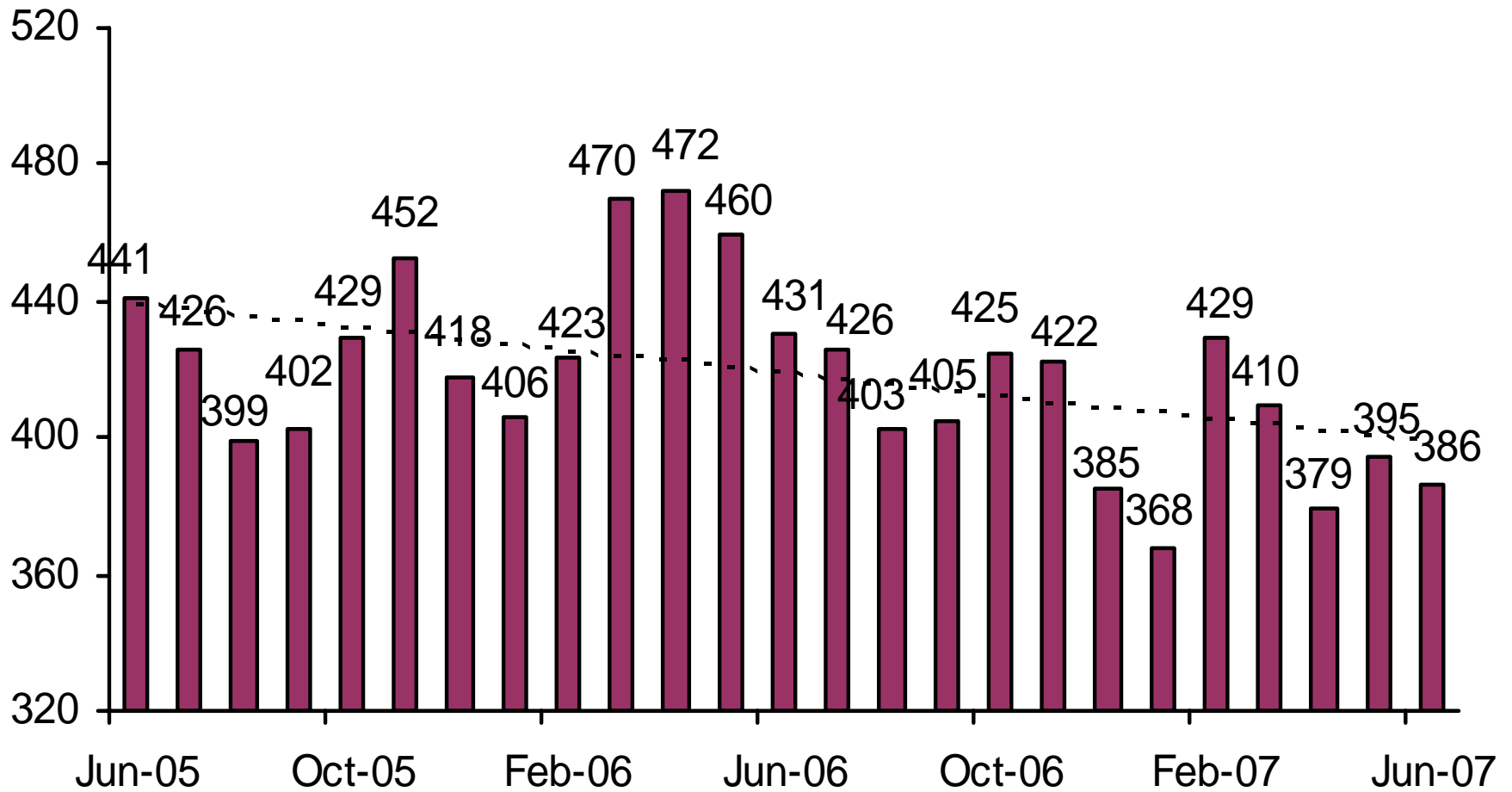


This population includes Interstate Compact and Report and Review caseloads, as reported to the Board of Supervisors and JLBC.

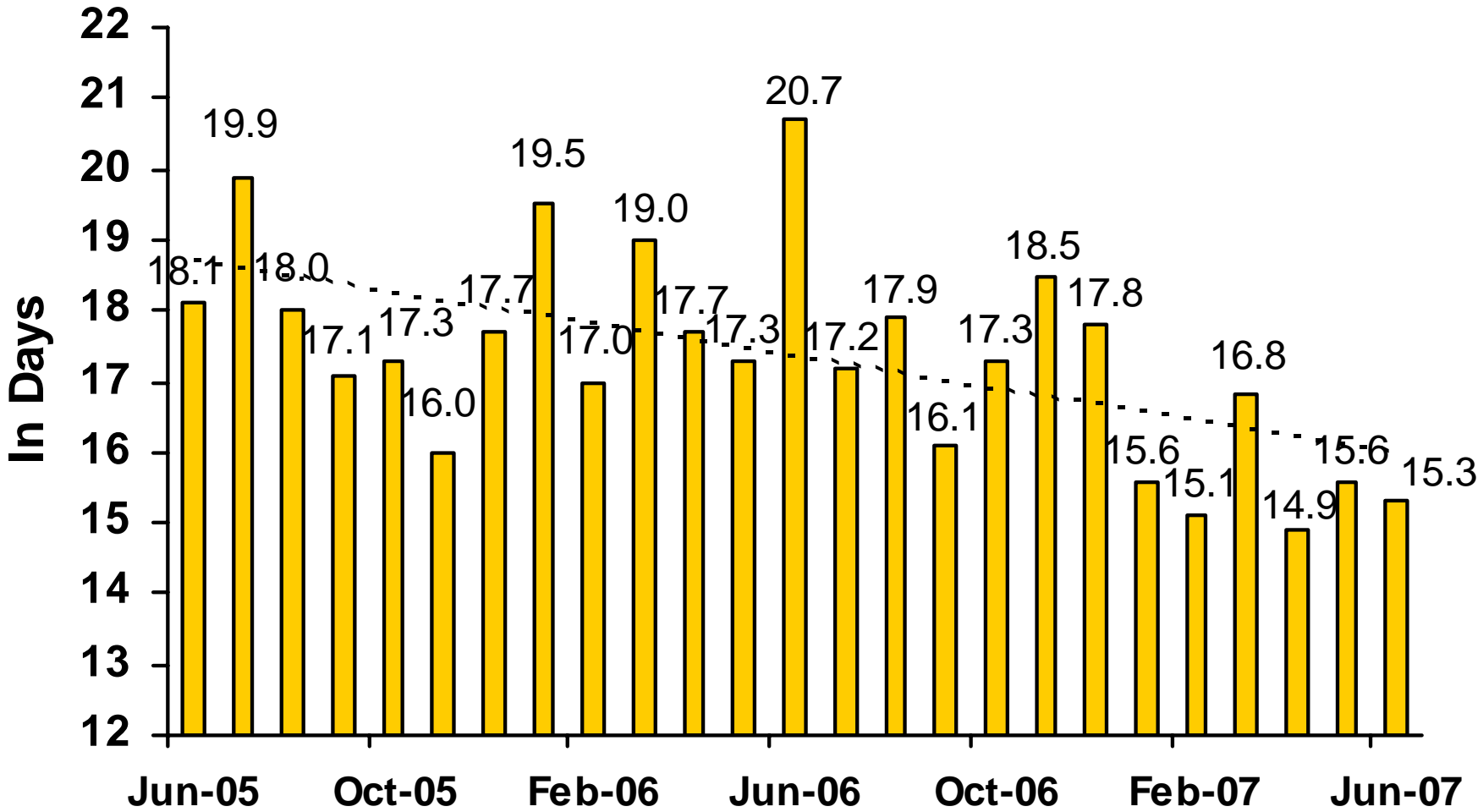
# Adult Probation Intensive Supervision Population



# Juvenile Detention Average Daily Population

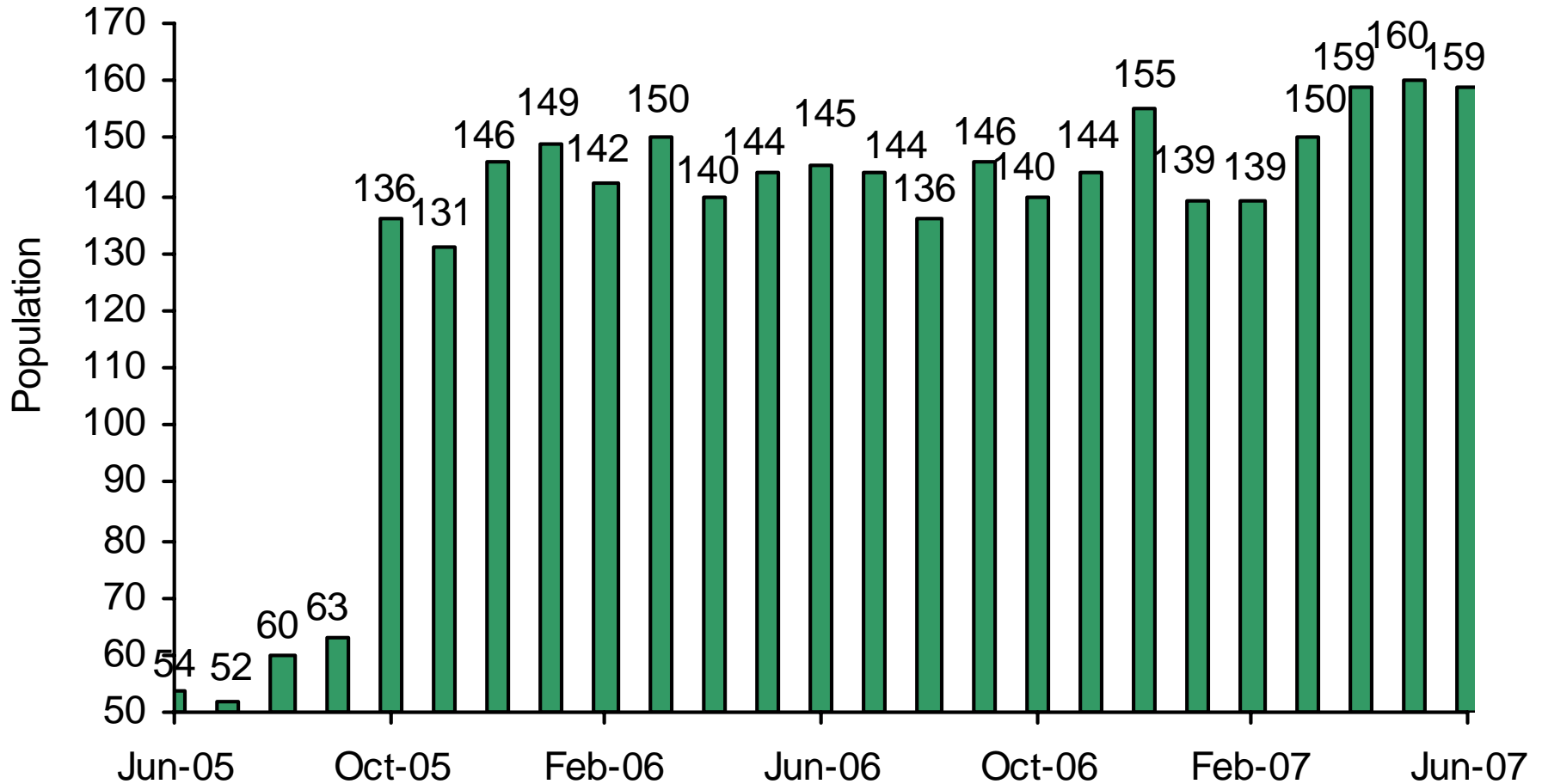


# Juvenile Detention Average Length of Stay



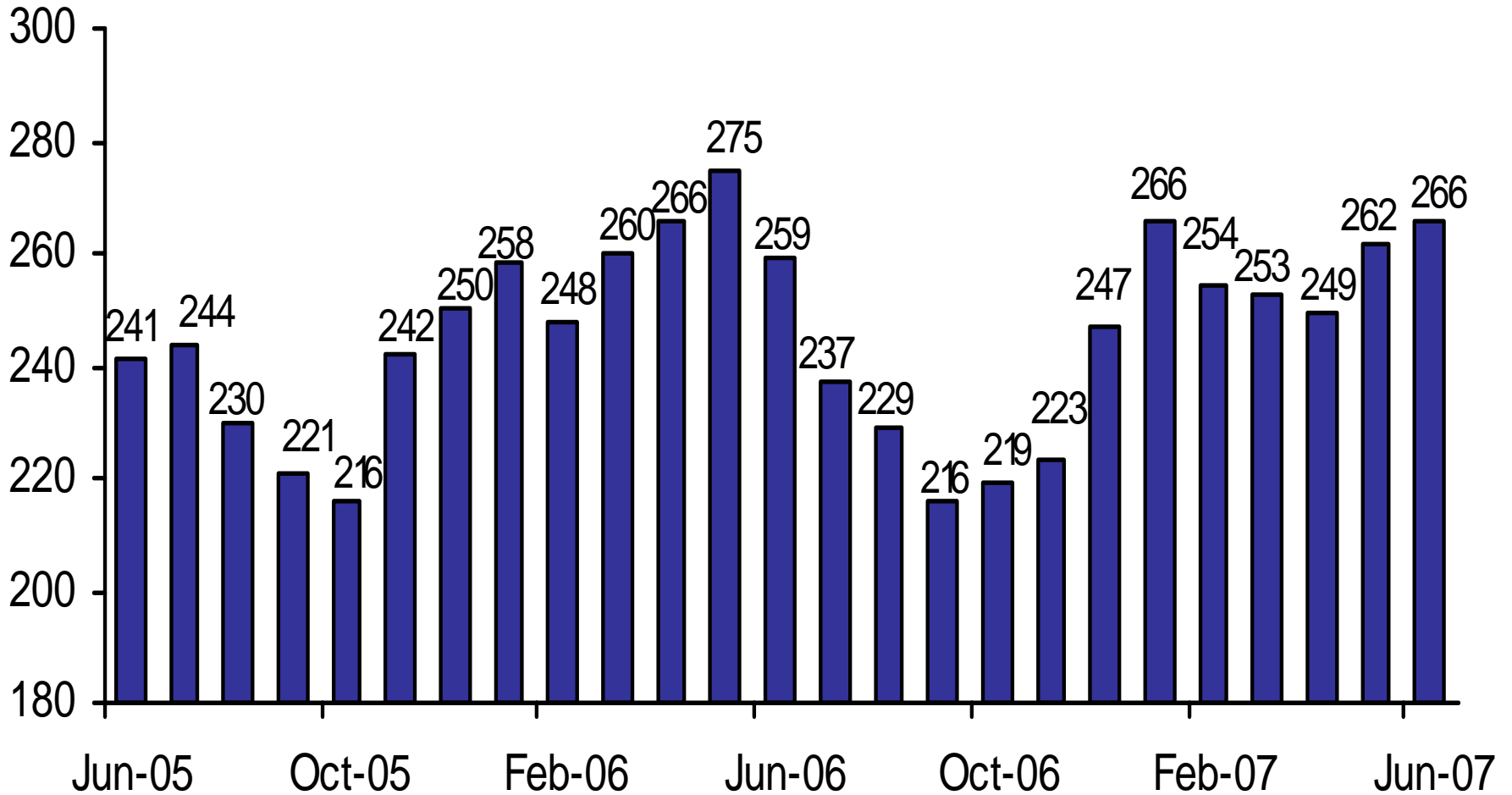


# Juvenile Electronic Monitoring



The increase beginning in October 2005 is due to more accurate data collection, including counting Intensive Probation use in addition to Standard use.

# Juvenile Home Detention



# Juvenile Probation

■ # on standard probation ■ # on intensive probation

