



Maricopa County
Criminal Justice System

Monthly Performance Report for February 2005

Monthly Averages						
	FY 2001	FY 2002	FY 2003	FY 2004	FY 2005 to-date	Feb. 2005
Sheriff's Office						
Bookings	9,614	9,641	9,875	10,176	9,838	9,291
Average Daily Population	7,059	7,557	8,044	8,657	8,949	8,907
Avg Length of Stay (in days)	22.4	23.8	24.4	26.0	27.7	26.8
Superior Court						
Filings	2,342	2,515	2,904	3,062	2,762	2,863
Terminations	2,259	2,367	2,330	2,612	2,685	2,667
Clearance Rate	96%	94%	80%	85%	97.5%	93.2%
Active Pending Inventory	7,990	7,419	8,123	9,106	9,878	9,970
Trials Completed	69	61	59	42	50	49
Trial Rate	2.9%	2.4%	2%	1.4%	1.8%	1.7%
Adult Probation						
Pretrial General Supervision	544	609	700	974	1,005	1,035
Pretrial Intensive Supervision	362	356	331	672	817	789
Pretrial Electronic Monitoring	51	78	97	154	160	164
Standard Probation Supervision	22,788	23,582	23,371	21,939	22,728	22,919
Intensive Probation Supervision	1,666	1,564	1,267	1,048	1,469	1,477
Juvenile Probation and Detention						
Avg Daily Detention Pop	400	407	401	431	433	451
Avg Length of Stay (in days)	14.1	14.7	15.1	16.6	18.6	15.6

Criminal Justice System News

Adult Incarceration: Bookings fell substantially from 10,443 in January to 9,291 in February. However, the average daily population rose slightly for all populations. The pretrial population increased to 5,623 in February from 5,608 in January; the sentenced population increased to 2,767 from 2,650; finally, agency holds increased to 467 from 415.

The overall average length of jail stay rose nearly a day, from 25.91 days in January to 26.84 days in February.

Filings & Case Processing: Filings into Superior Court rose slightly in February, while terminations fell. The FY05 to-date clearance rate remains near 100%, well over the average clearance rates in the last several fiscal years. The active pending inventory continued to rise in February. Arraignment levels also rose, to their highest levels since September 2004.

EDC/Direct complaints rose to 900 in February, the highest seen in FY05.

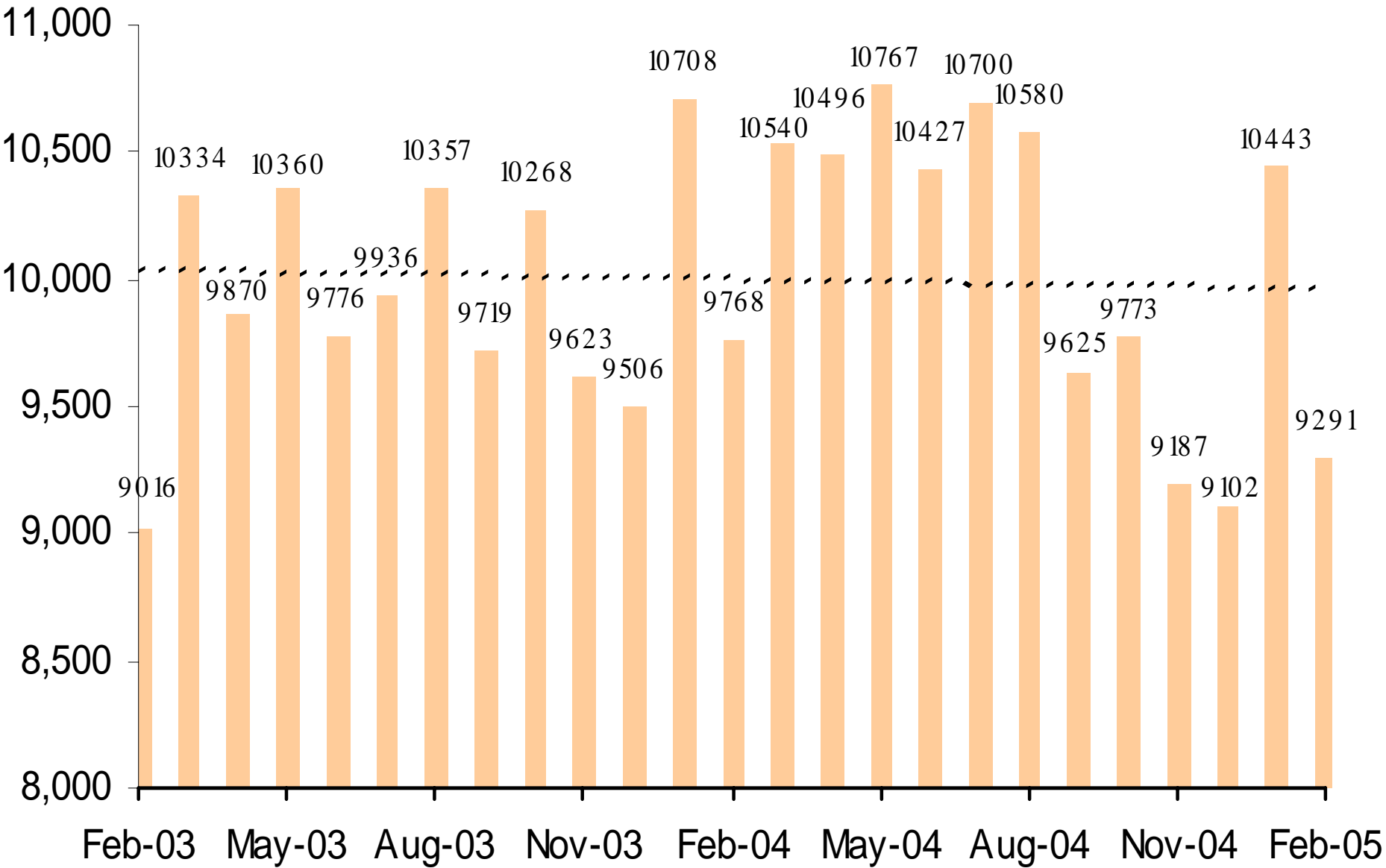
Adult Probation: Pretrial numbers for general supervision, intensive supervision, and electronic monitoring all increased slightly in February. General supervision numbers are the highest they have been in a year and electronic monitoring numbers are the highest since August 2004.

Levels of standard probation supervision fell slightly from 23,046 in January to 22,919 in February. Intensive probation supervision increased in February (1,477) compared to January (1,459).

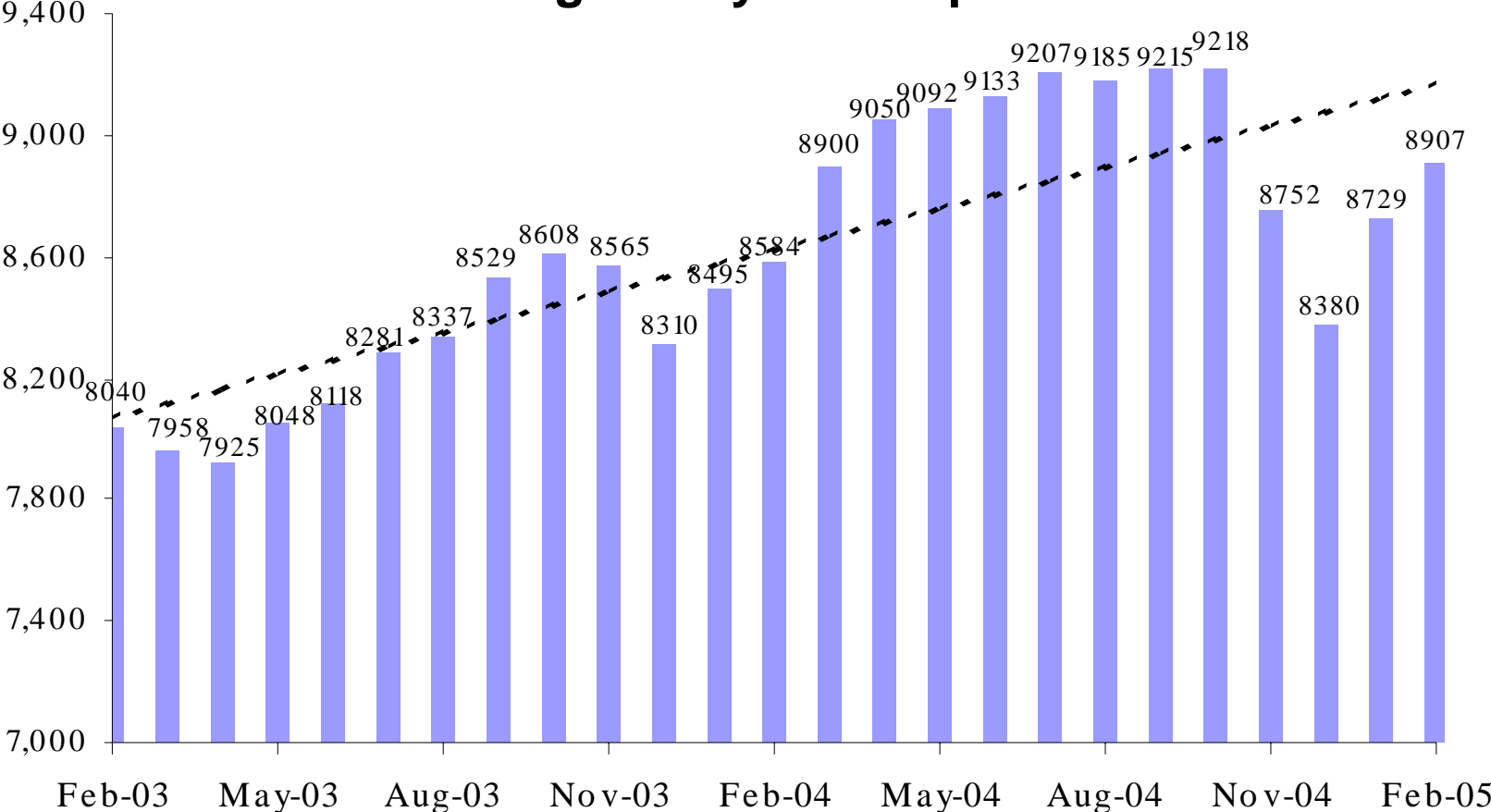
Juvenile Detention: The average daily population increased to its highest level since July 2004. However, the average length of stay fell to its lowest levels since October 2003. Home detention was at its highest level (249 in February) since May 2002 when it was 253. However, home detention numbers were at 248 in both December 2004 and May 2004.

A criminal justice system-wide goal is to enhance the utility and timeliness of management information on case processing, in an effort to help agencies effectively address current events. An interagency committee of McJustice meets regularly to accomplish this and develop this report. **Input from readers is welcomed.** Please contact Amy Rex at 602-506-1310.

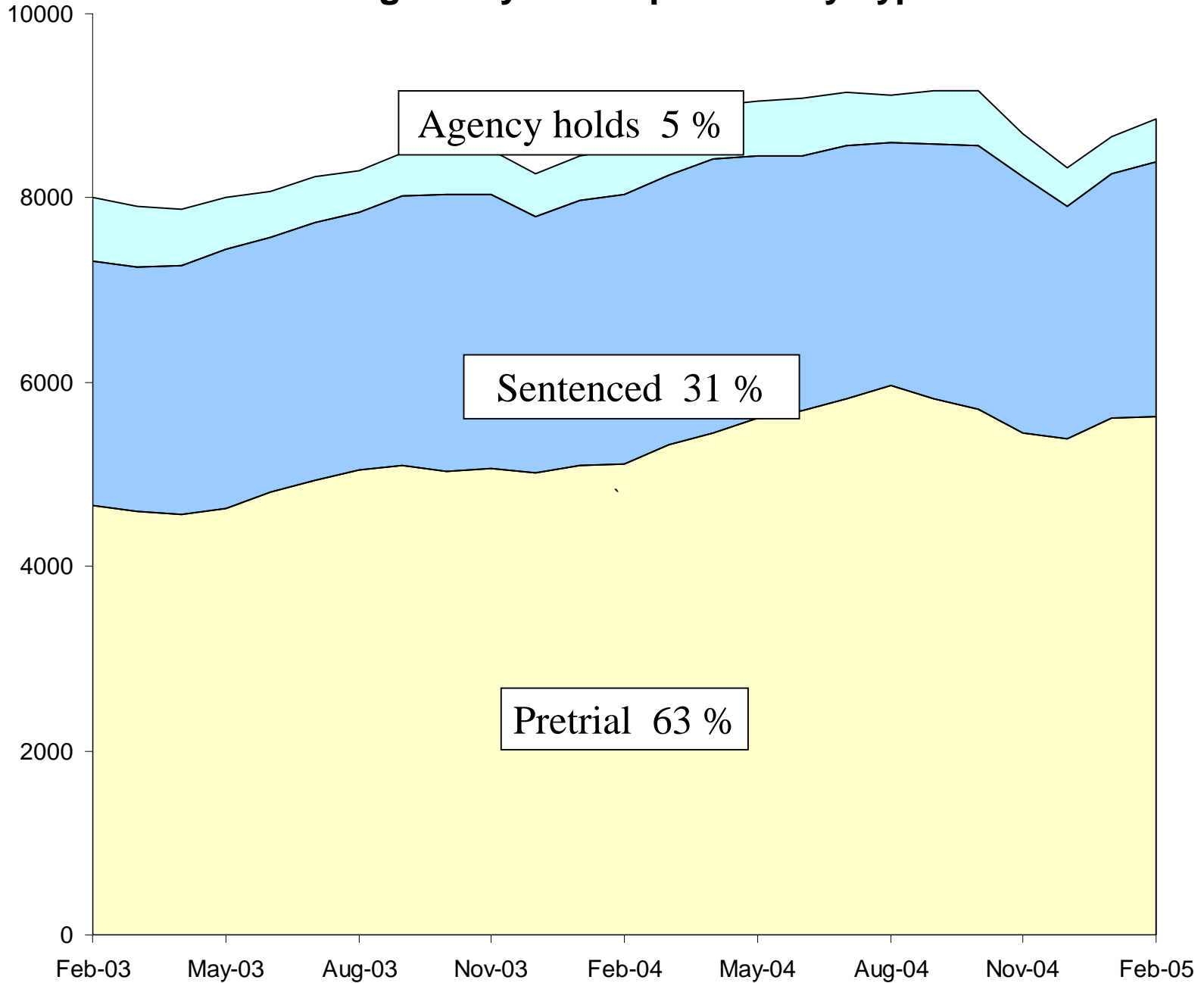
Jail Bookings



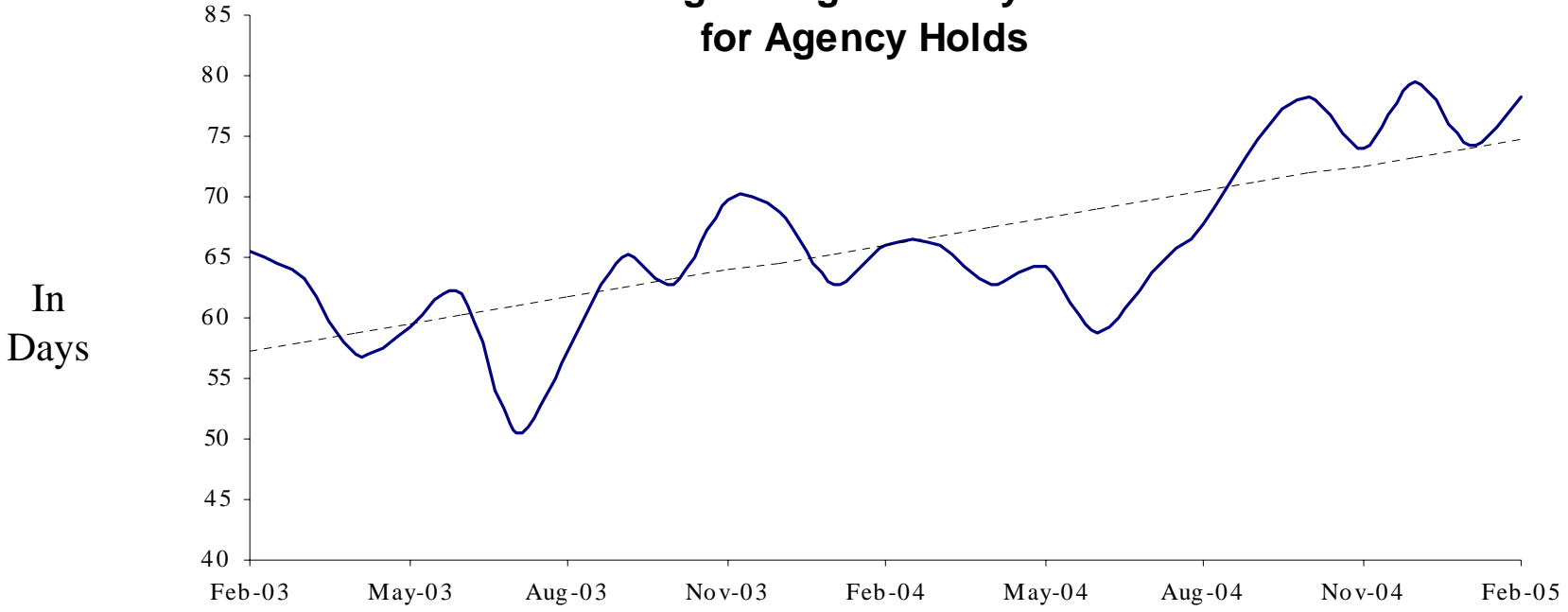
Average Daily Jail Population



Average Daily Jail Population by Type

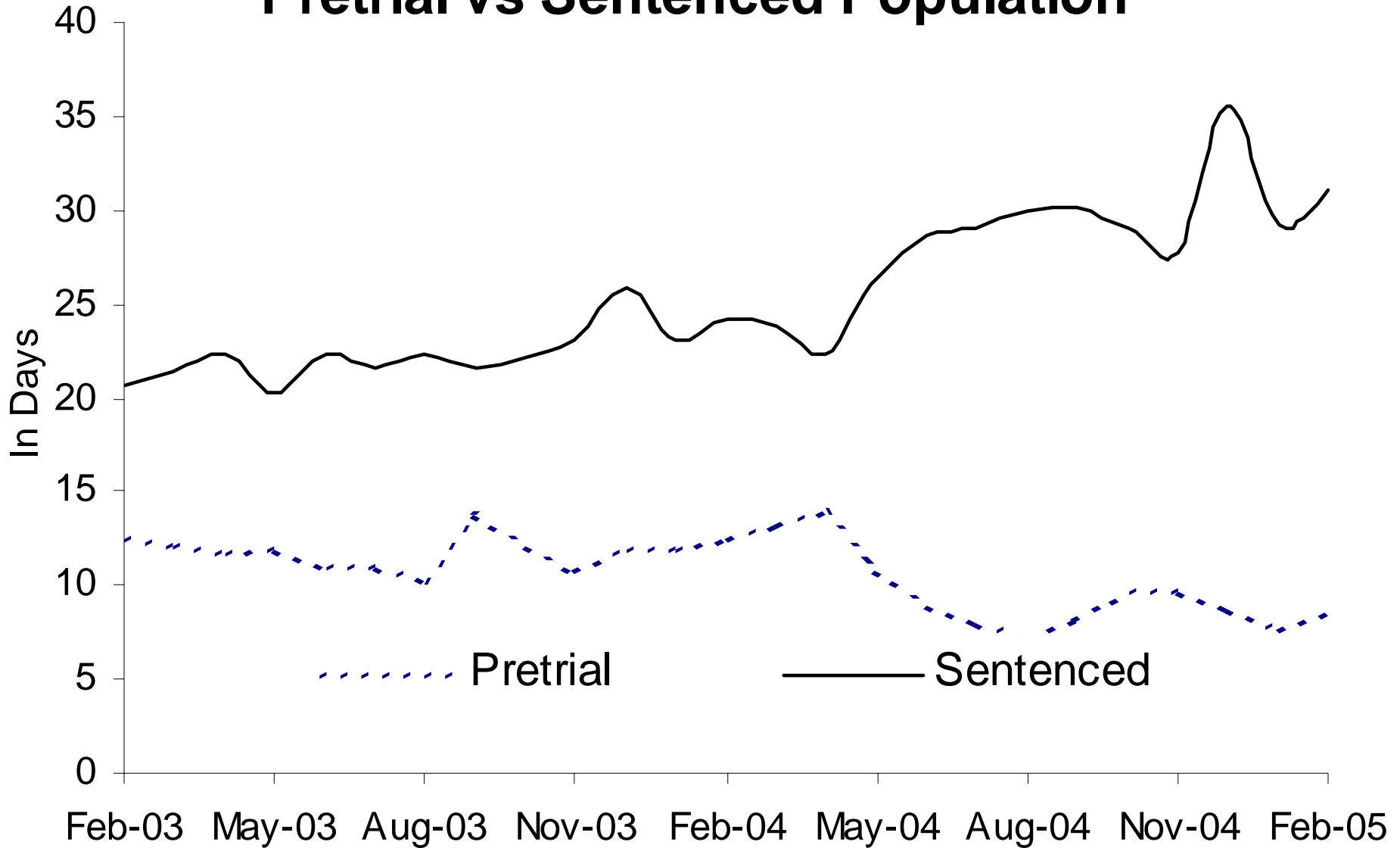


Average Length of Stay in Jail for Agency Holds

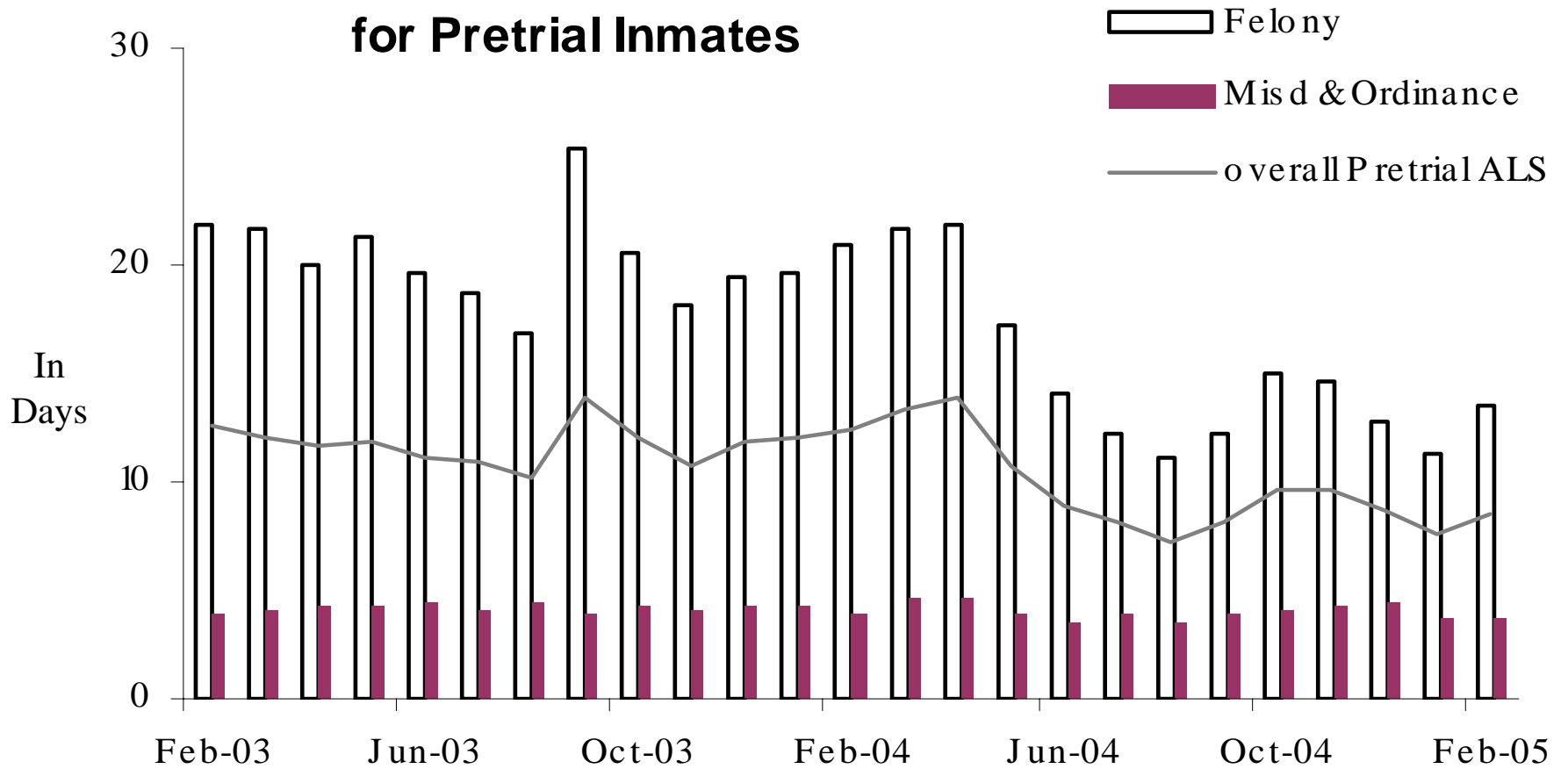


71% Dept of Corrections, 17% Federal agencies, 12% other

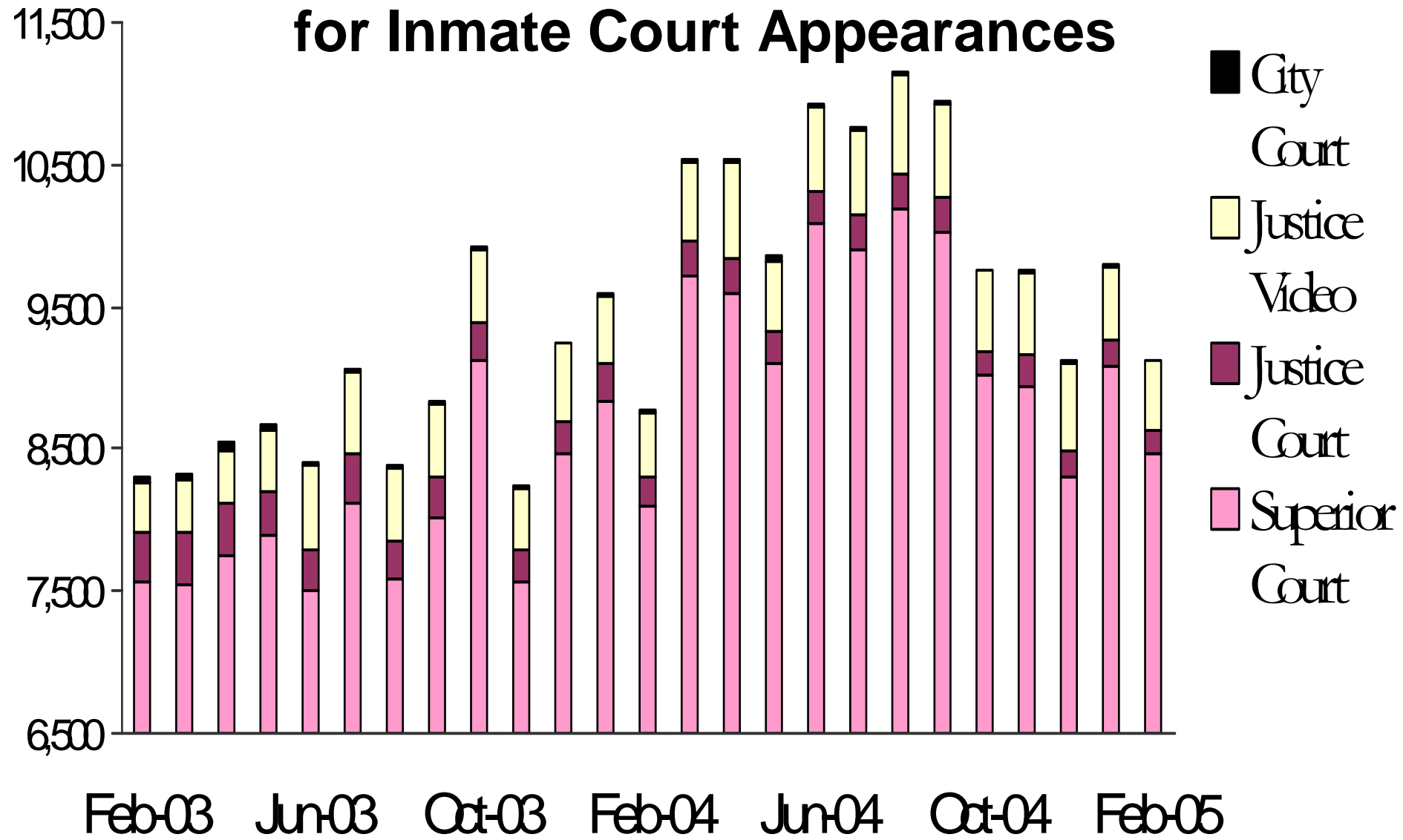
Average Length of Stay in Jail Pretrial vs Sentenced Population



Average Length of Stay in Jail for Pretrial Inmates



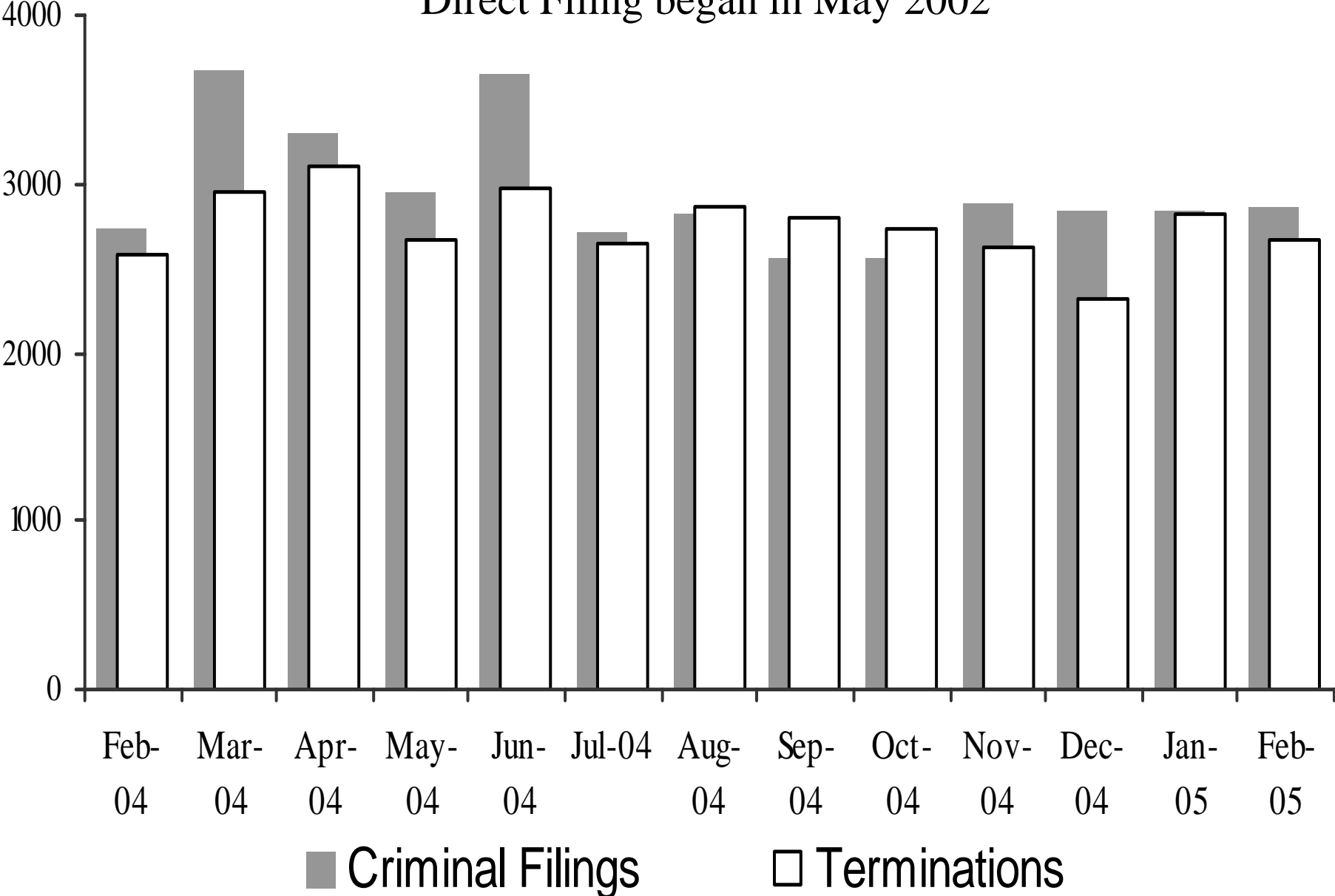
Sheriff's Office Transports for Inmate Court Appearances



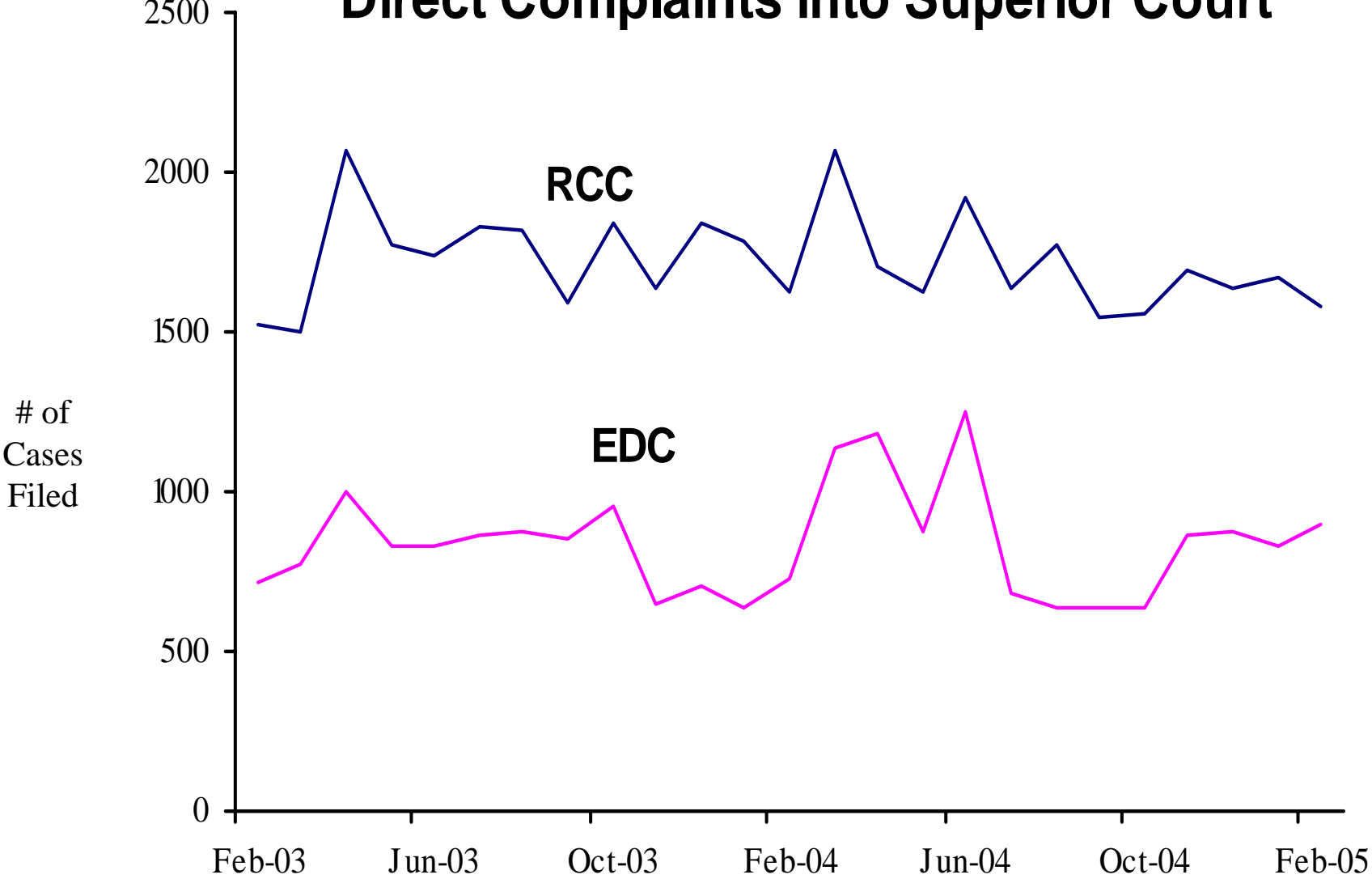
Since Direct Filing into Superior Court began May 2002, remaining transports to Justice Courts are for misdemeanor cases.

Superior Court Filings and Terminations

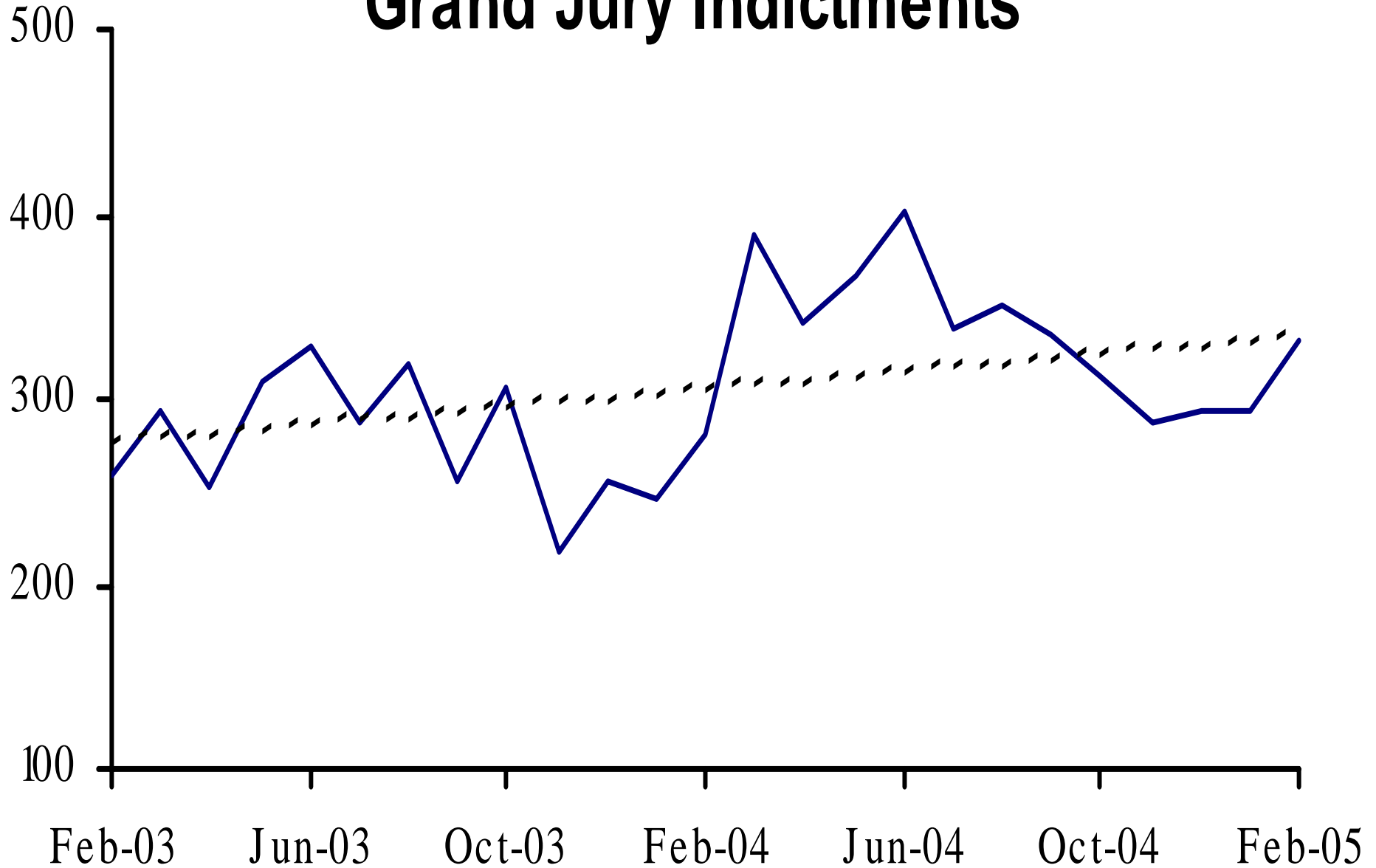
Direct Filing began in May 2002



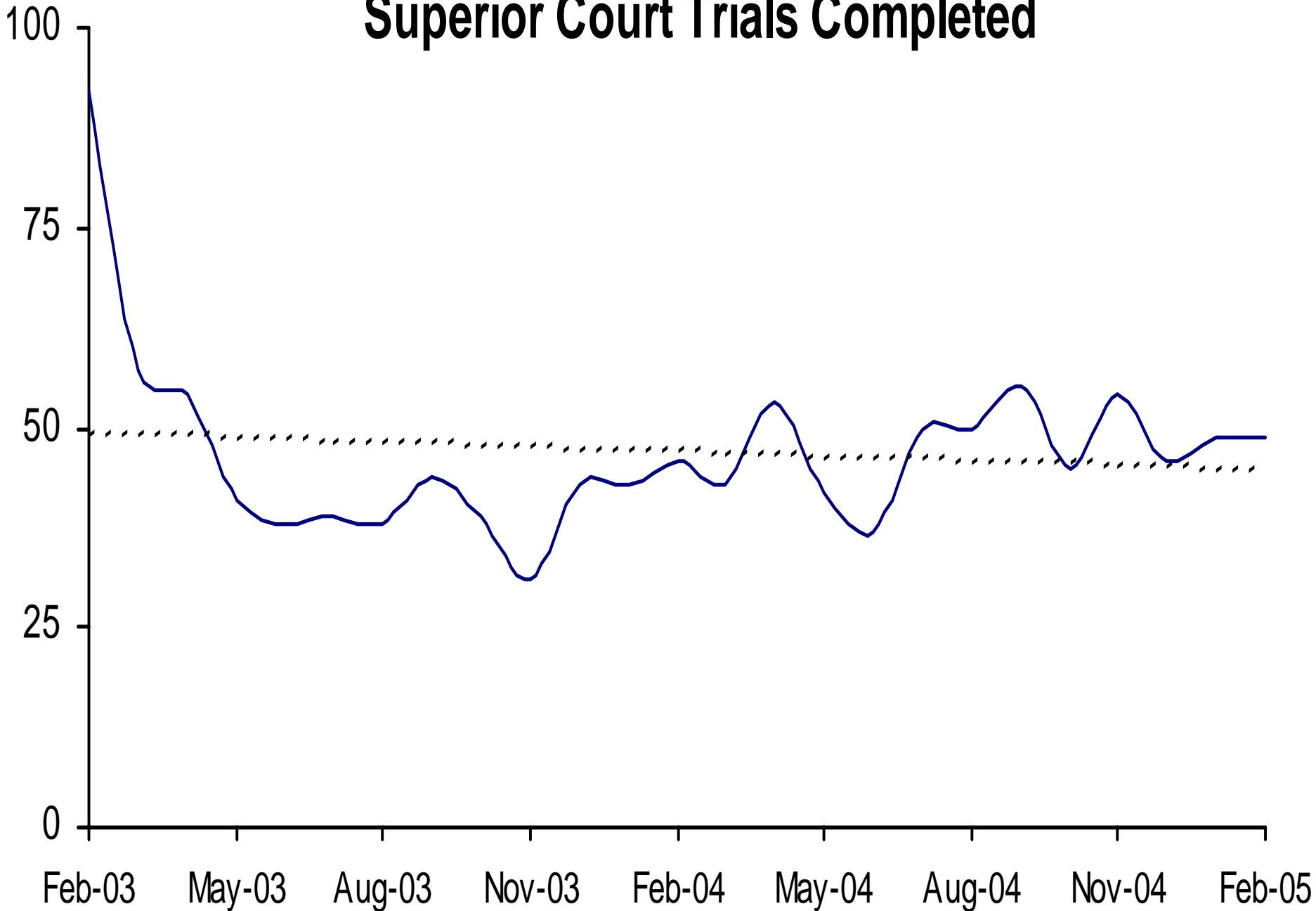
Direct Complaints into Superior Court



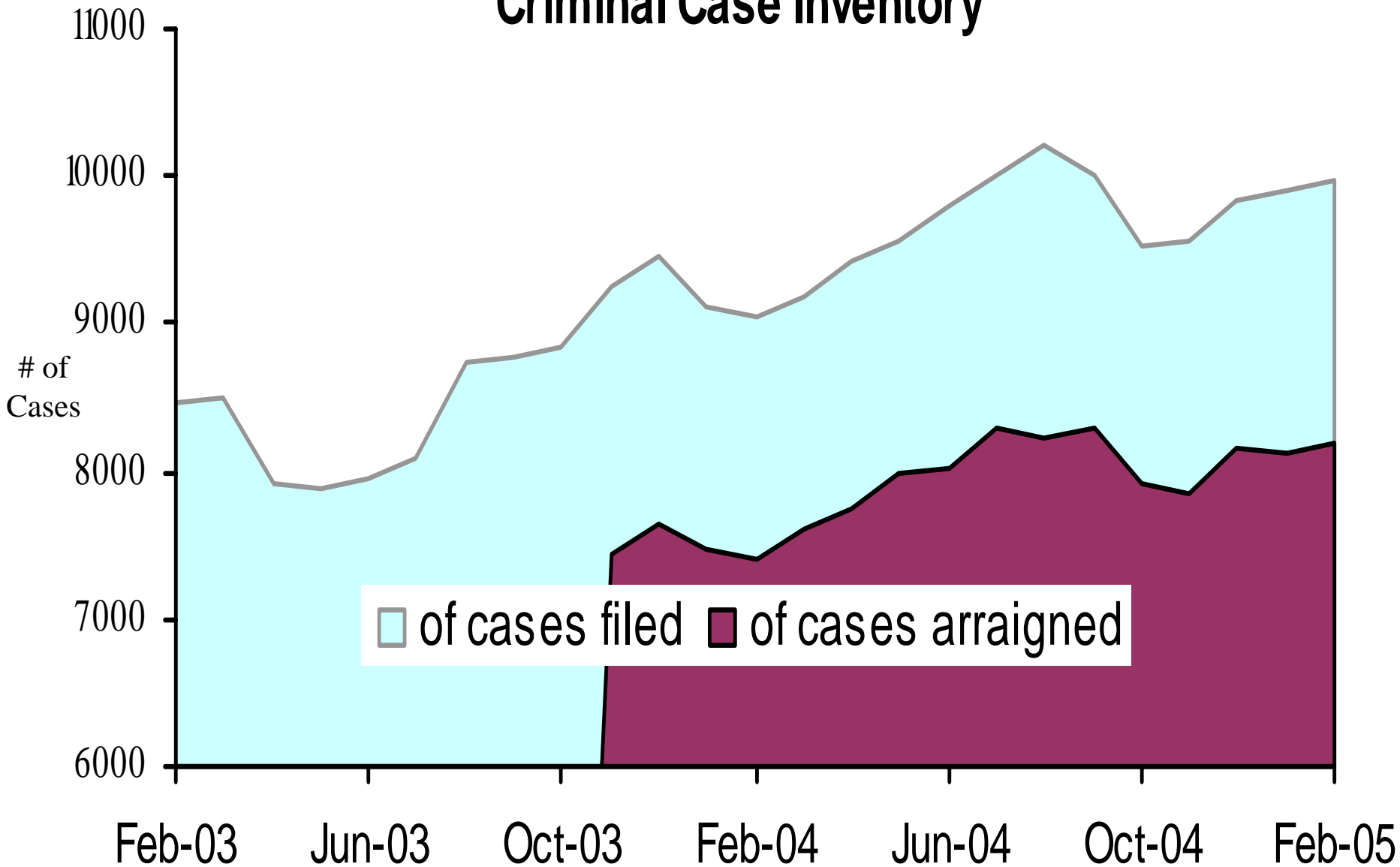
Grand Jury Indictments



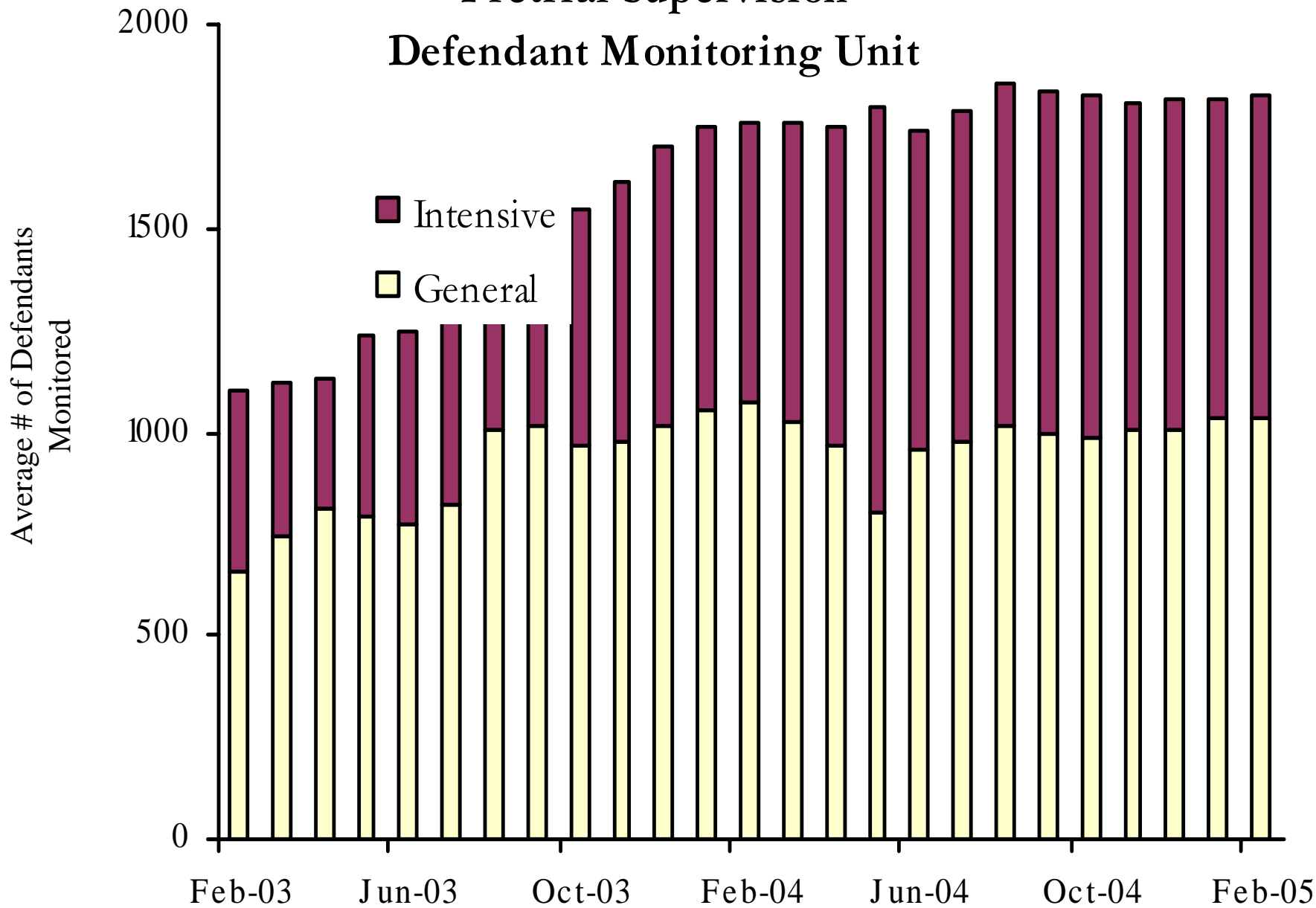
Superior Court Trials Completed



Active Pending Criminal Case Inventory

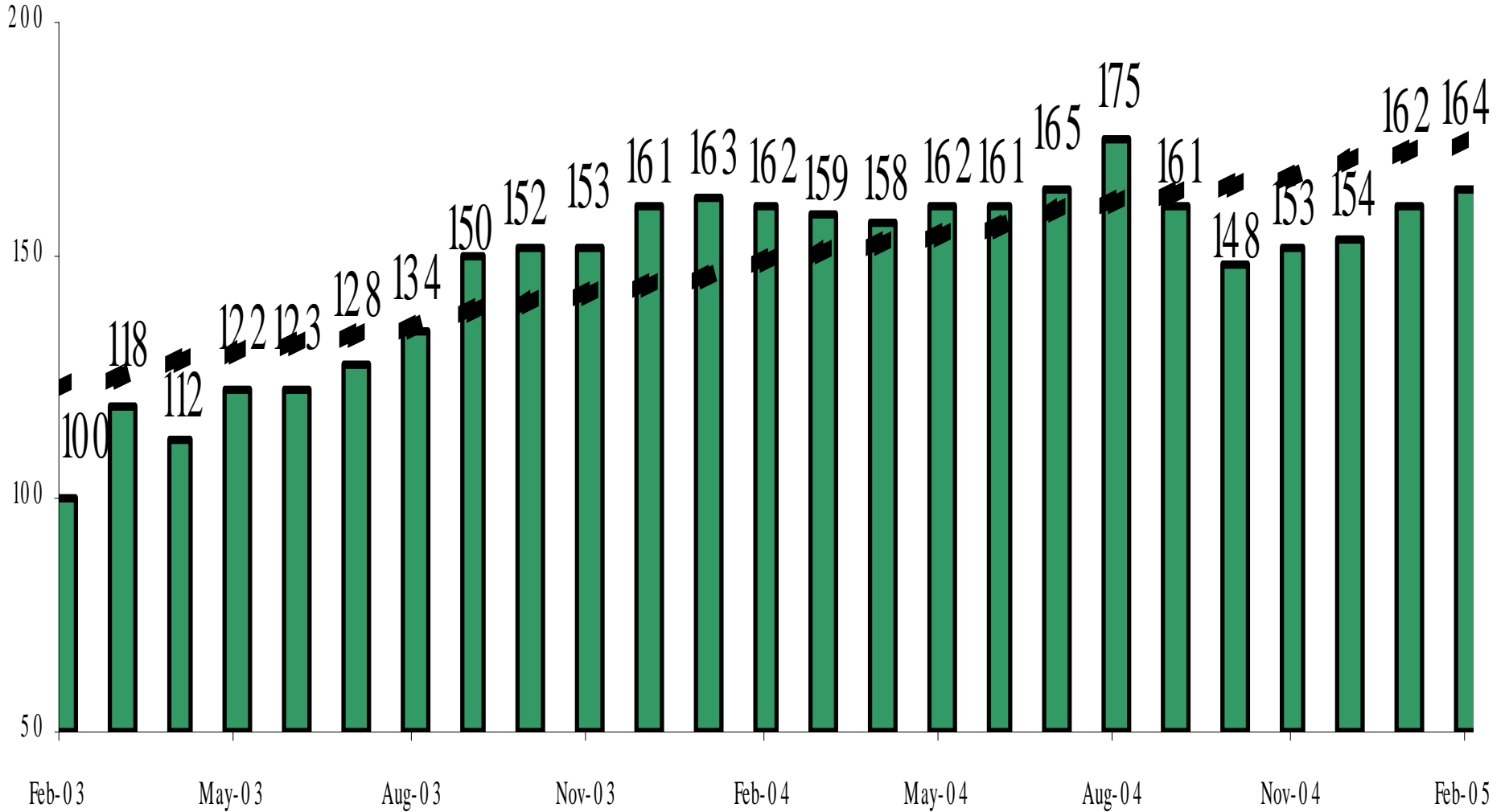


Pretrial Supervision Defendant Monitoring Unit



Pretrial Supervision

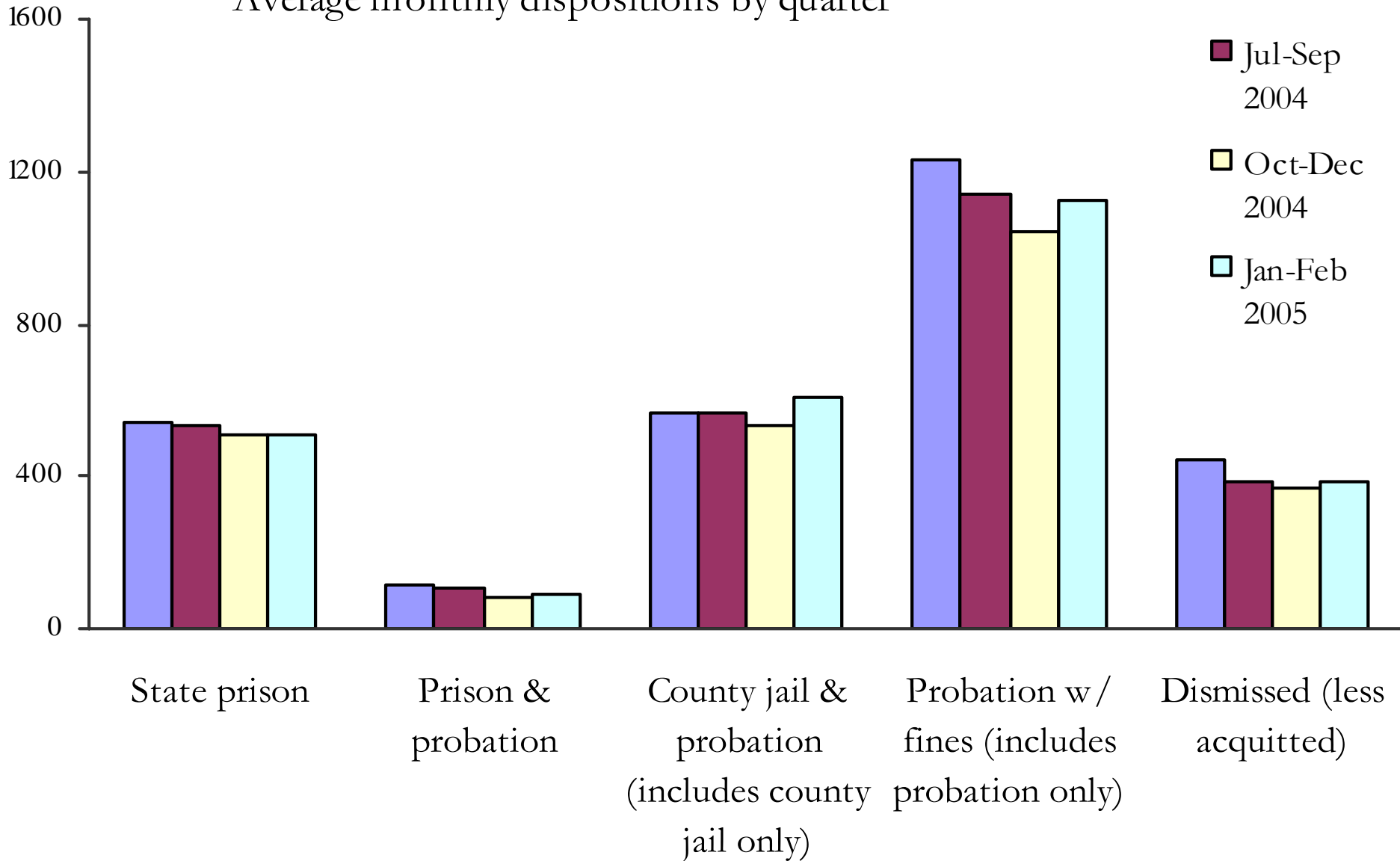
Defendants on Electronic Monitoring



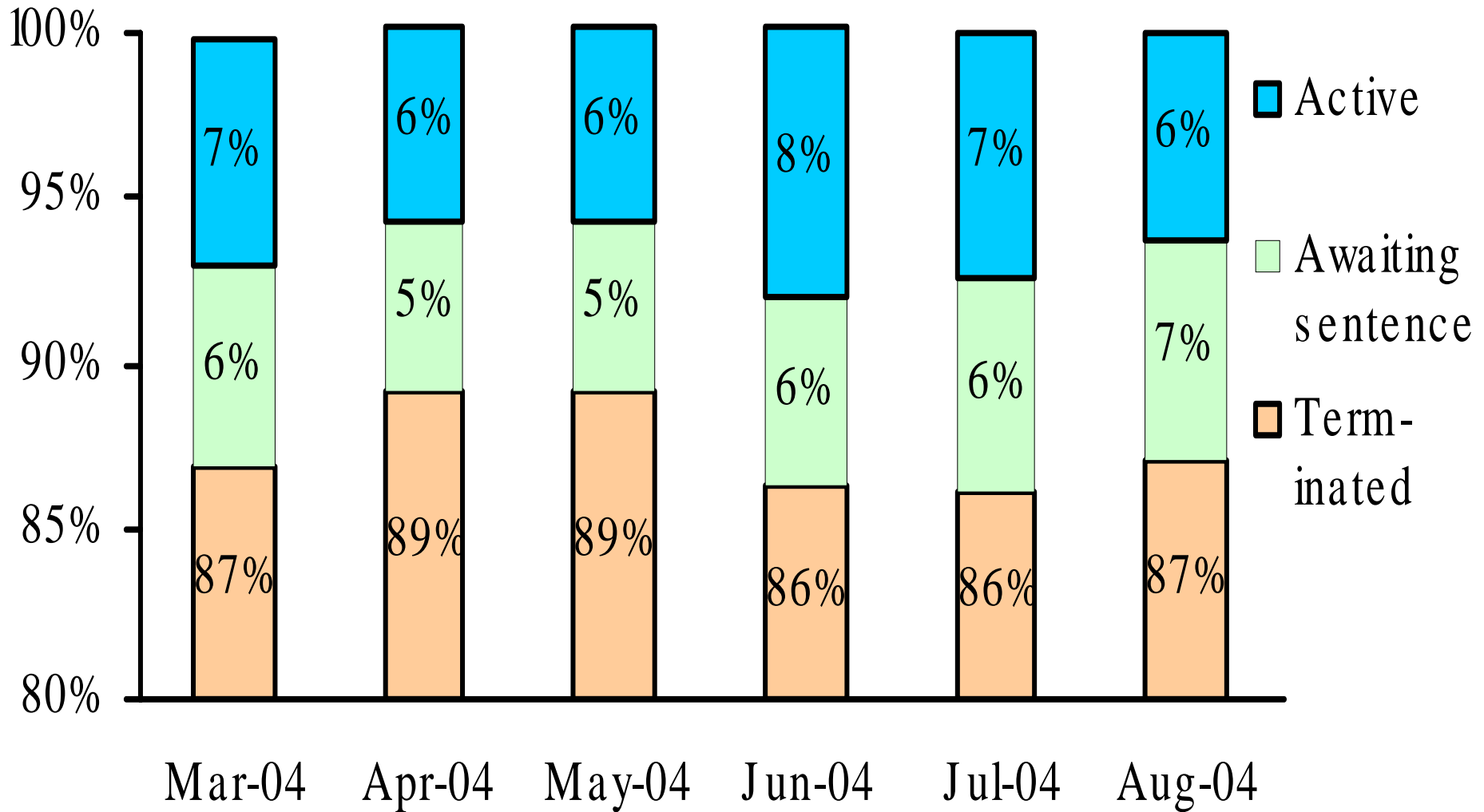
Disposition of Cases Terminated

Average monthly dispositions by quarter

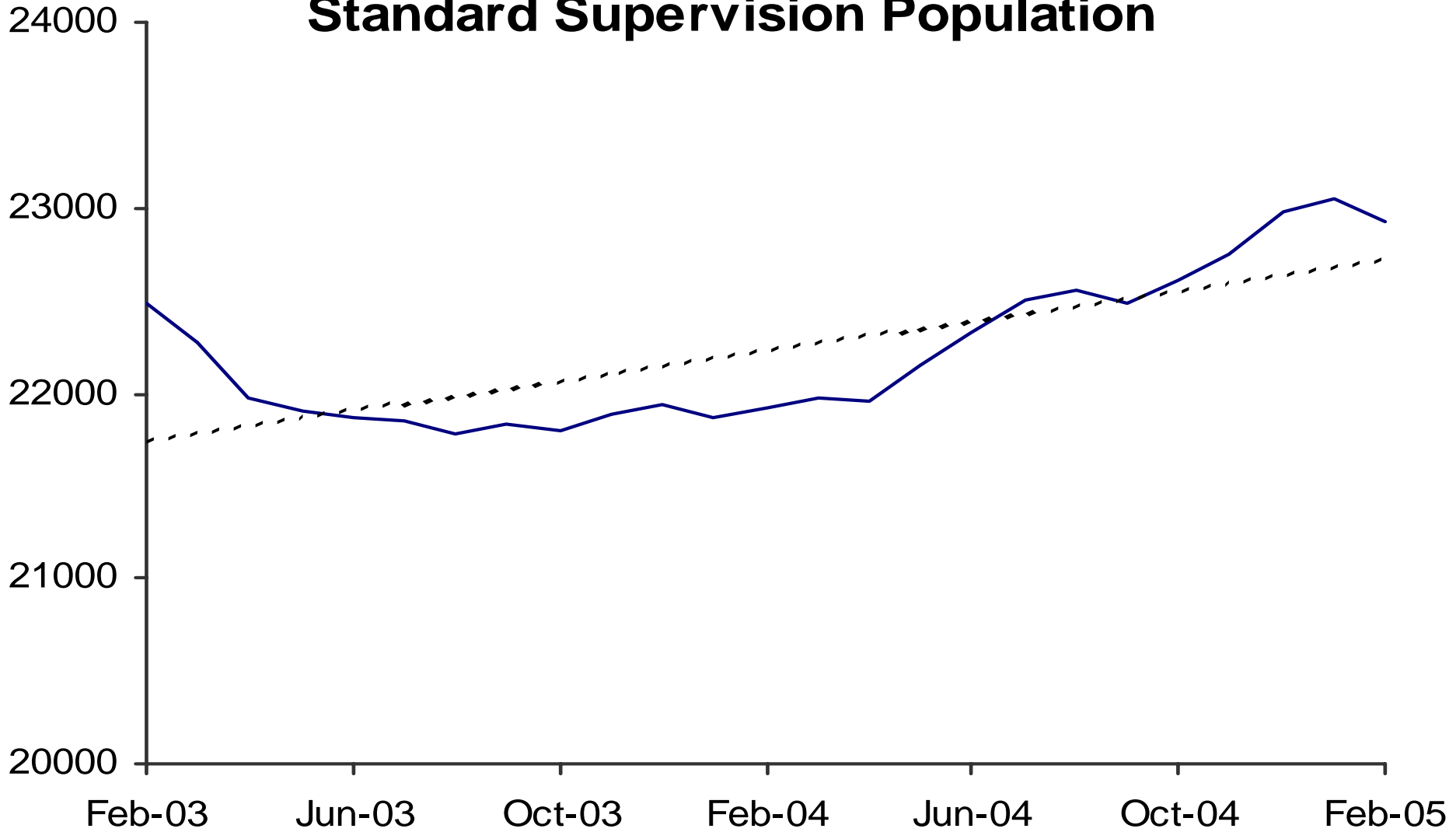
- Apr-Jun 2004
- Jul-Sep 2004
- Oct-Dec 2004
- Jan-Feb 2005



Status of Cases After 180 Days

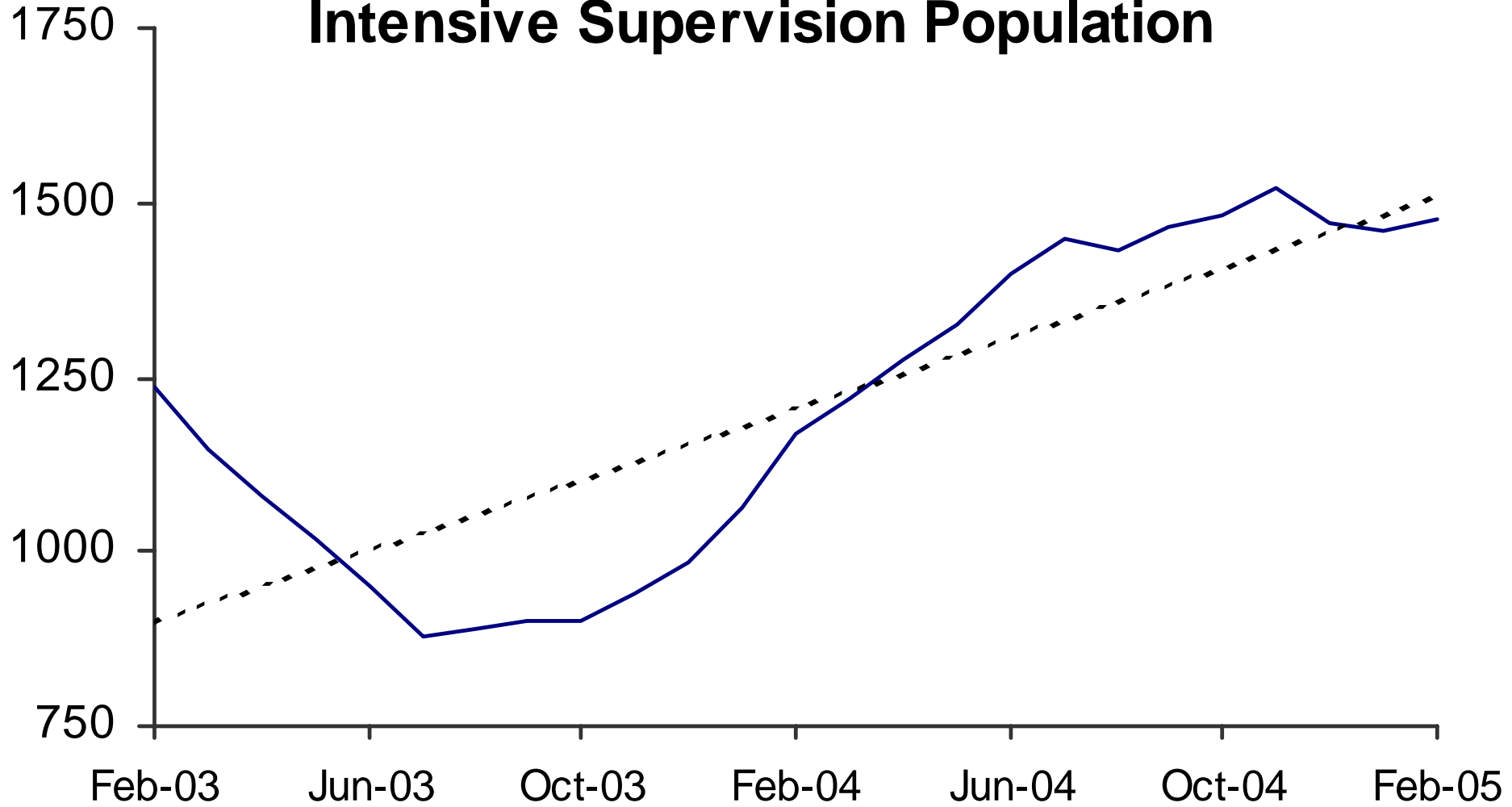


Adult Probation Standard Supervision Population

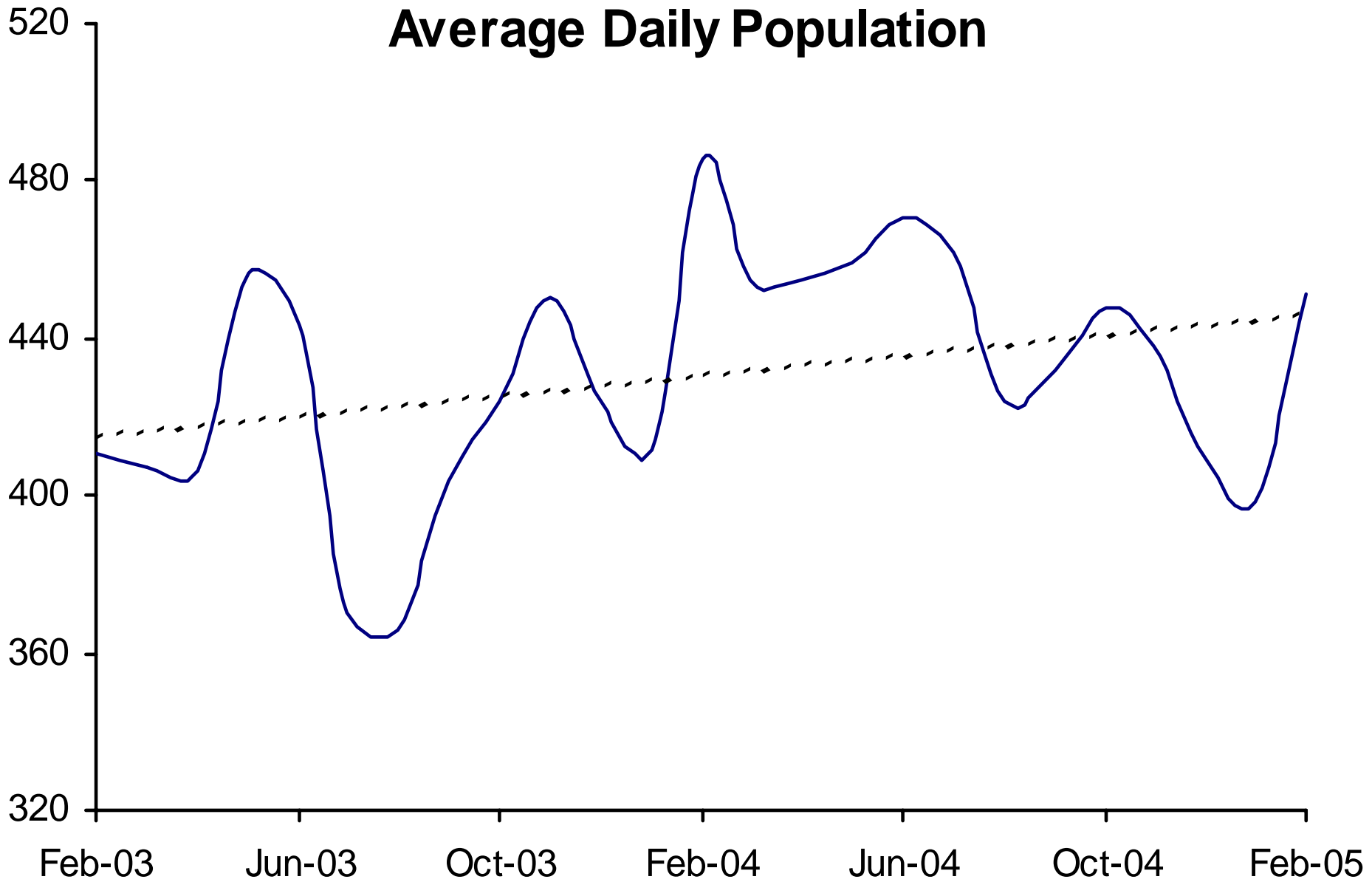


Interstate Compact and Report and Review caseloads are not included.

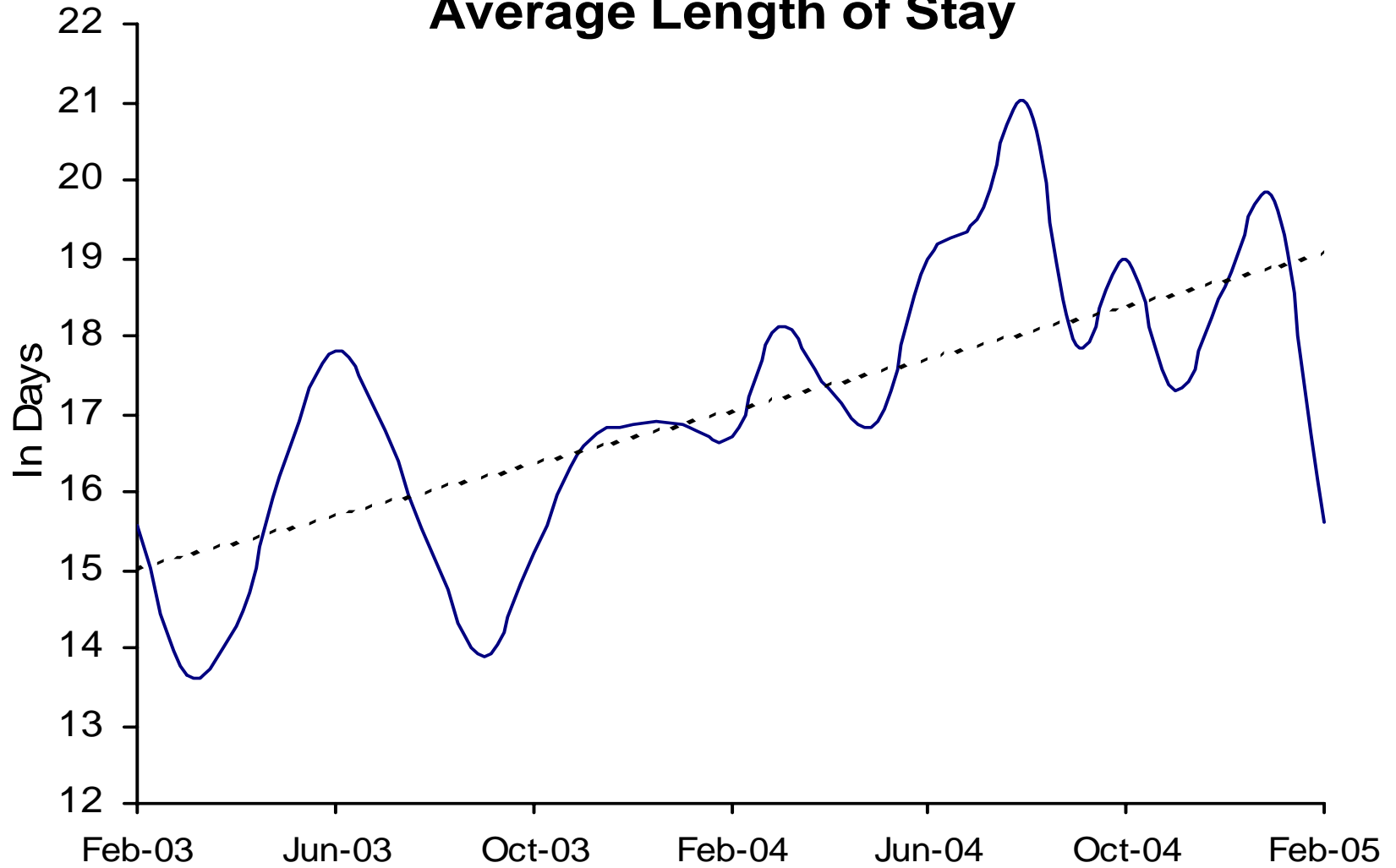
Adult Probation Intensive Supervision Population



Juvenile Detention Average Daily Population

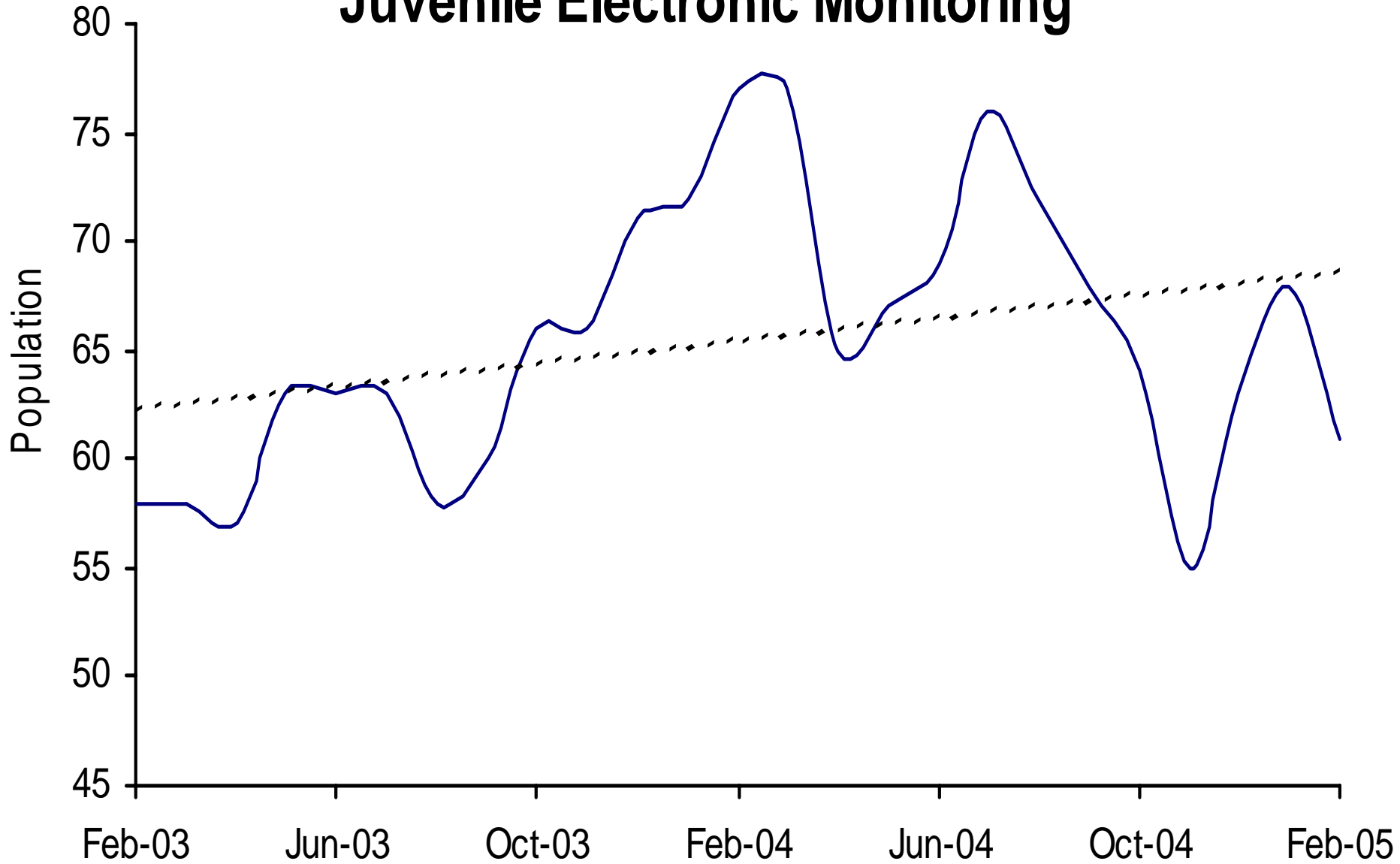


Juvenile Detention Average Length of Stay



The average length of stay for January - May 2003 was recalculated based upon an improved methodology.

Juvenile Electronic Monitoring



Juvenile Home Detention

