



Maricopa County

Criminal Justice System

Monthly Performance Report for February 2007

	Annual Averages				Year-to-Date Avgs			Current Month		
	FY 2003	FY 2004	FY 2005	FY 2006	FY 2006	FY 2007	% Change	Feb-06	Feb-07	% Change
Sheriff's Office										
Bookings (monthly avg)	9,875	10,176	9,975	10,459	10,291	10,326	0.3%	9,755	9,851	1.0%
Releases (monthly avg)	9,857	10,196	9,934	10,485	10,282	10,385	1.0%	9,821	9,593	-2.3%
Avg Daily Population	8,044	8,657	9,054	9,733	9,847	8,844	-10.2%	9,692	8,699	-10.2%
Avg Length of Stay (in days)	24.4	26	27.7	28.4	29.1	26.0	-10.7%	27.8	24.7	-11.2%
Superior Court										
Filings	2,904	3,062	2,996	3,248	3,136	3,021	-3.7%	3,087	3,166	2.6%
Terminations	2,330	2,612	2,758	2,984	2,851	2,958	3.8%	2,840	2,648	-6.8%
Clearance Rate	80.0%	85.0%	93.0%	92.1%	91.2%	98.7%	8.2%	92.0%	83.6%	-9.1%
Active Pending Inventory	8,123	9,106	10,002	10,856	10,963	10,235	-6.6%	10,732	10,205	-4.9%
Trials Completed	59	42	51	68	64	85	32.8%	74	80	8.1%
Trial Rate	2.0%	1.4%	1.7%	2.1%	2.1%	2.9%	38.1%	2.4%	2.5%	4.2%
Justice Courts Filings										
DUI	949	986	1,023	971	1,076	1,060	-1.5%	1,042	815	-21.8%
All other Criminal Traffic	1,969	1,900	2,252	3,491	2,920	5,372	84.0%	3,695	5,617	52.0%
Civil Traffic	13,500	12,353	14,290	12,824	13,404	12,531	-6.5%	12,997	12,310	-5.3%
Misdemeanor	2,714	2,531	2,581	2,052	1,926	2,186	13.5%	1,570	1,778	13.2%
Small Claims	1,694	1,796	1,578	1,144	1,156	1,194	3.3%	1,063	1,141	7.3%
Forcible Detainers	6,456	6,859	6,842	7,065	7,241	5,590	-22.8%	5,666	4,265	-24.7%
Other Civil	2,311	2,579	2,763	2,628	2,557	5,334	108.6%	2,288	5,409	136.4%
Orders of Protection	542	523	485	508	493	447	-9.3%	450	433	-3.8%
Injunctions against Harassment	436	463	495	446	427	427	0.0%	373	447	19.8%
Adult Probation										
Pretrial General Supervision	700	990	978	775	787	792	0.6%	747	715	-4.3%
Pretrial Intensive Supervision	331	657	816	1,077	1,065	1,125	5.6%	1,211	1,095	-9.6%
Pretrial Electronic Monitoring	97	153	164	190	182	242	33.0%	197	248	25.9%
Standard Probation Supervision	25,400	25,055	26,091	27,896	27,420	30,028	9.5%	28,230	30,483	8.0%
Intensive Probation Supervision	1,267	1,078	1,456	1,321	1,336	1,282	-4.0%	1,286	1,275	-0.9%
Juvenile Detention and Probation										
Avg Daily Detention Pop	401	431	443	433	419	408	-2.6%	423	429	1.4%
Avg Length of Stay (in days)	15.1	16.6	18.7	18.5	17.8	16.9	-5.1%	17	15.1	-11.2%
Standard Probation	4,387	4,232	4,108	4,055	4,024	4,262	5.9%	3,937	4,201	6.7%
Intensive Probation	659	518	547	527	534	517	-3.2%	498	523	5.0%



Maricopa County

Criminal Justice System

CRIMINAL JUSTICE SYSTEM NEWS – FEBRUARY 2007

Adult Incarceration

Bookings decreased from January's 10,638 to February's 9,851; this is 1% less than the same month last year. **Average Daily Population increased**, from 8,509 to 8,699. Over the same time period last fiscal year, ADP continues to be down 10.2%. The **pretrial population increased** from 5,483 in January to 5,665 in February. The **sentenced population remained nearly the same**, at 2,663 in February. The **hold population increased** from 313 in January to 329 in February.

Most measures of Average Length of Stay decreased or stayed nearly the same in February. **Overall ALOS decreased slightly** from 24.8 to 24.7 days (this is the lowest ALOS since January 2004 – 24.6 days). ALOS is down 10.7% when comparing FY06 to-date with FY07 to-date. **The ALOS for agency holds decreased** from 67.3 to 59.6 days. **Pretrial ALOS decreased** from 8.7 to 6.4 days (this is the lowest pretrial ALOS since June 2006 when it was also 6.4 days). **Sentenced ALOS increased slightly** from 31.2 to 31.9 days. Breaking down the pretrial population, felony ALOS decreased from 13.2 to 9.3 days and misdemeanor ALOS decreased from 3.6 to 3.1 days.

Superior Court Filings & Case Processing

Criminal filings and terminations decreased in February: filings from 3,520 to 3,166 and terminations from 3,048 to 2,648. The resulting clearance rate was 83.6%. **The active pending case inventory increased** from 10,010 to 10,205. **Filings into RCC and EDC decreased in February:** RCC filings from 2,043 to 1,904, EDC filings from 1,119 to 981. **80 trials were completed in February** compared to 99 in January. **The February trial rate was 2.5%**, a slight decrease from January's 2.8%.

Justice Court Filings

DUI, all other criminal traffic, and civil traffic filings decreased in February compared to January: DUI from 1,507 to 815; all other criminal traffic from 6,299 to 5,617; and civil traffic from 14,474 to 12,310. **Injunctions against harassment increased** from 392 to 447.

Adult Probation

General and intensive levels of pretrial supervision increased in February compared to January: general from 664 to 715; intensive from 990 to 1,095. However, **electronic monitoring decreased slightly** from 251 to 248. All three types of supervision have increased when comparing the same periods for FY06 and FY07.

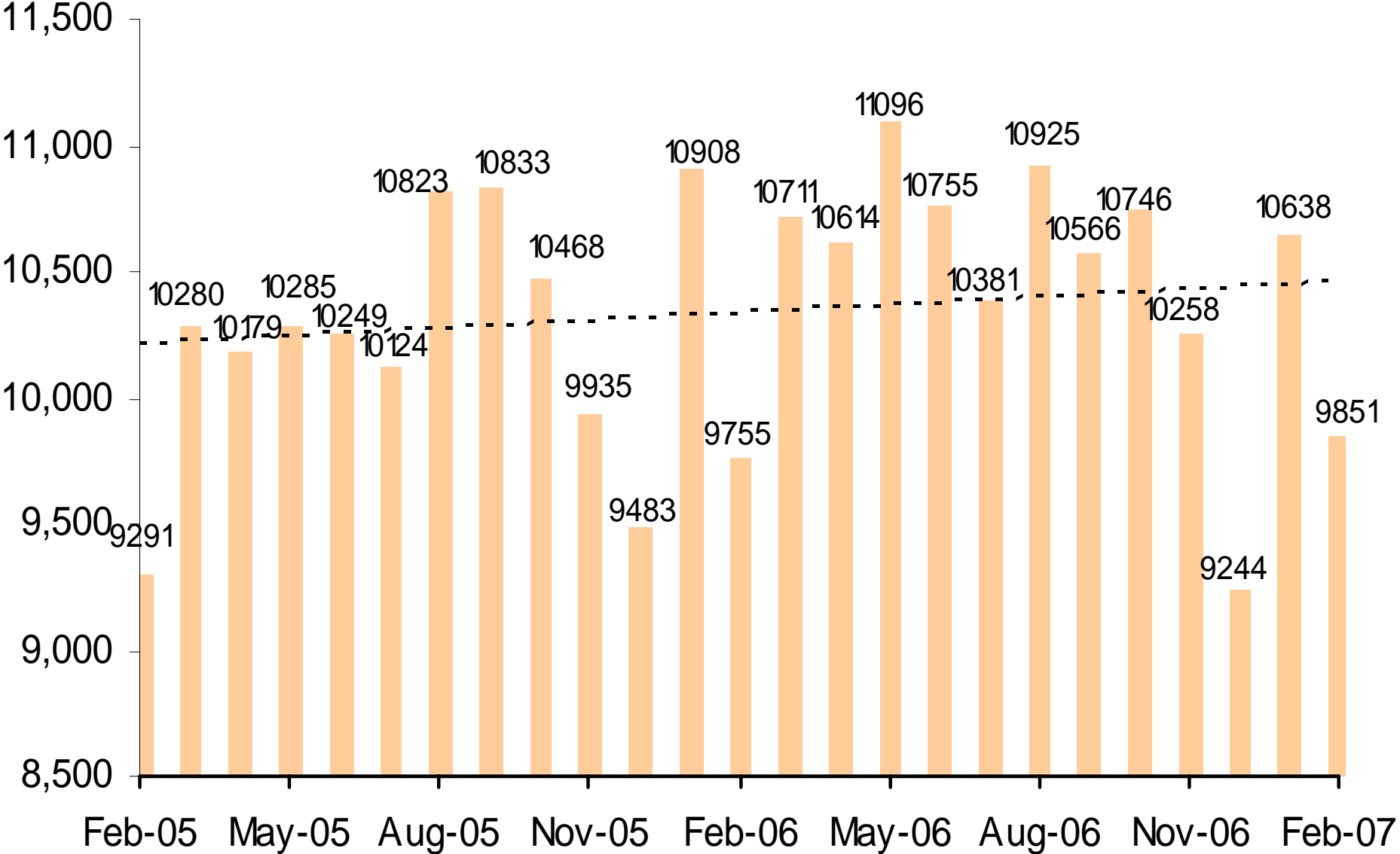
Levels of standard and intensive probation supervision increased in February: standard from 30,354 to 30,483; intensive from 1,258 to 1,275.

Juvenile Detention and Probation

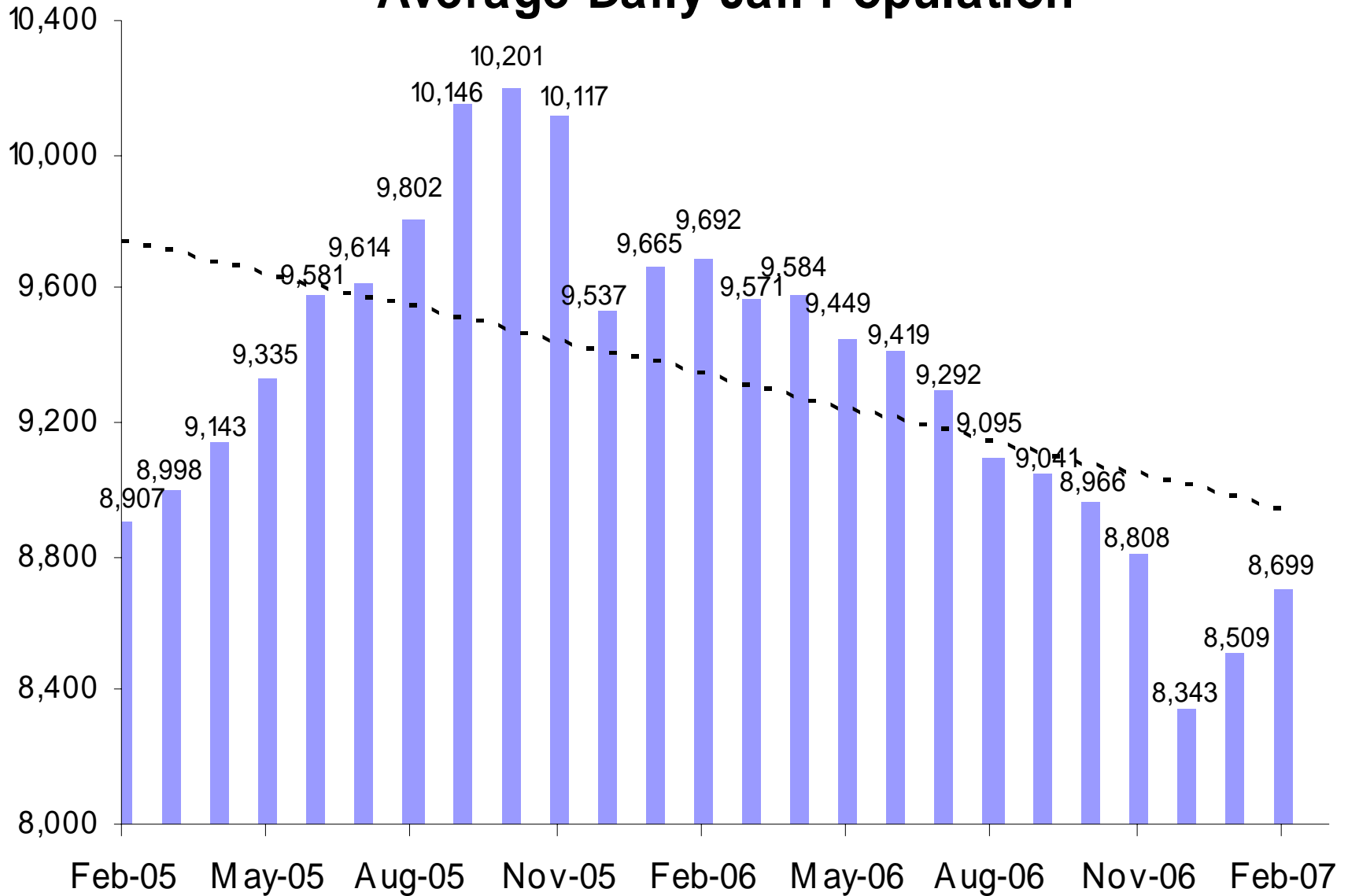
The **Average Daily Detention Population increased** from 368 in January to 429 in February. However, **ALOS decreased** from 15.6 to 15.1 days; this is the lowest ALOS since September 2003 when it was 13.9 days. **Electronic Monitoring remained the same** between January and February, at 139. **Home detention decreased** from 266 to 254.

Levels of juvenile standard and intensive probation decreased slightly: standard from 4,279 to 4,201 and intensive from 525 to 523.

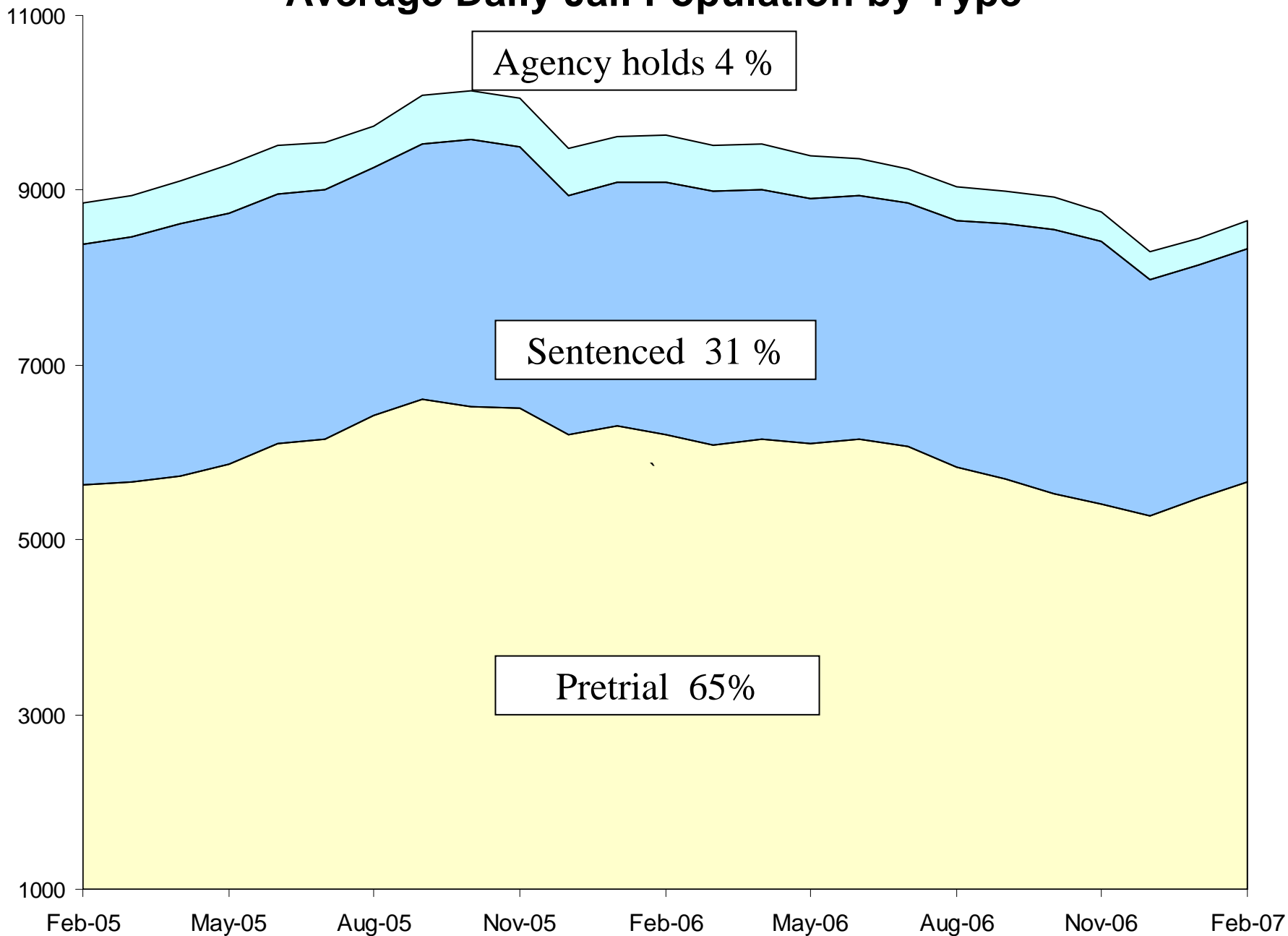
Jail Bookings



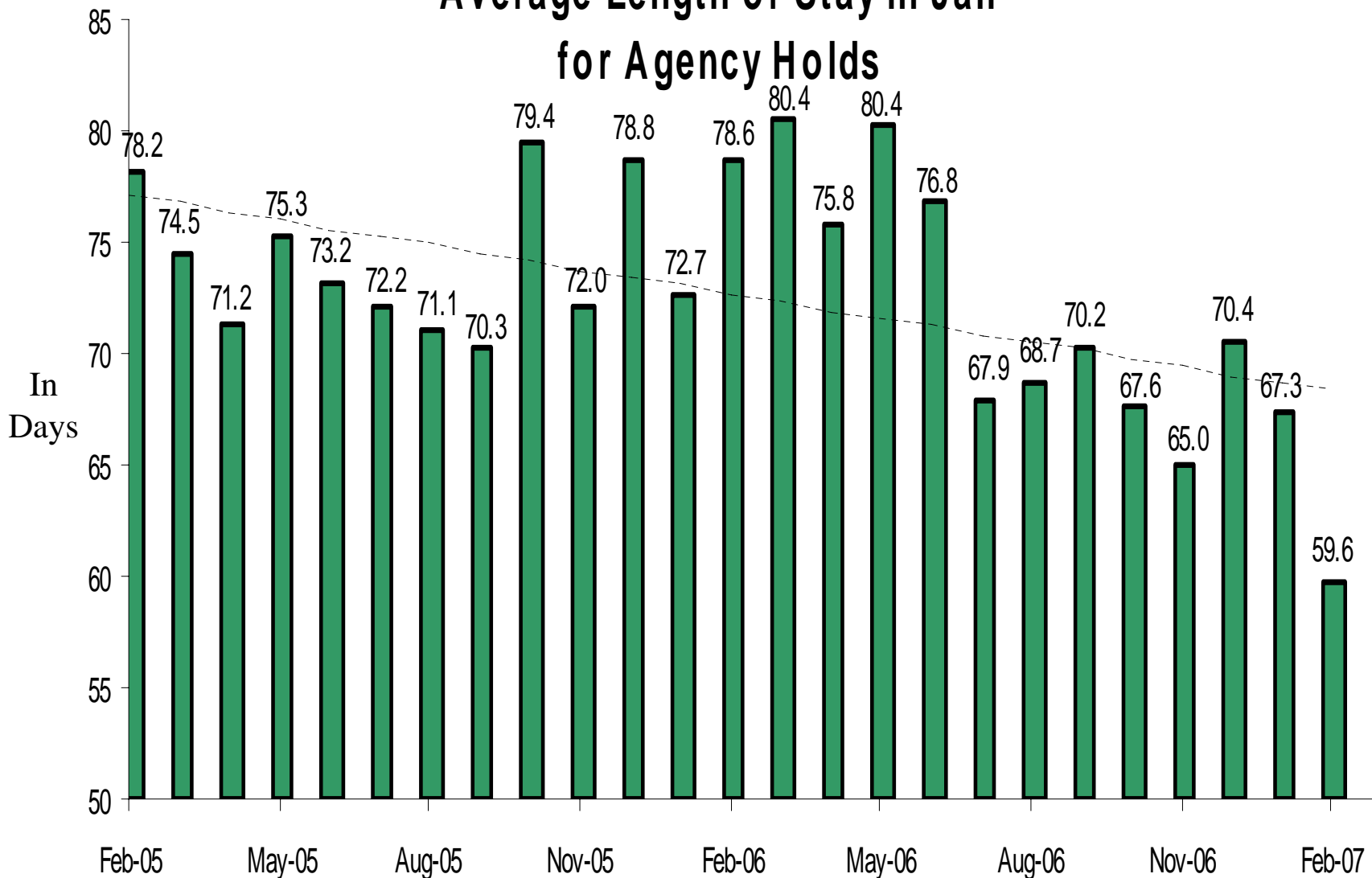
Average Daily Jail Population



Average Daily Jail Population by Type

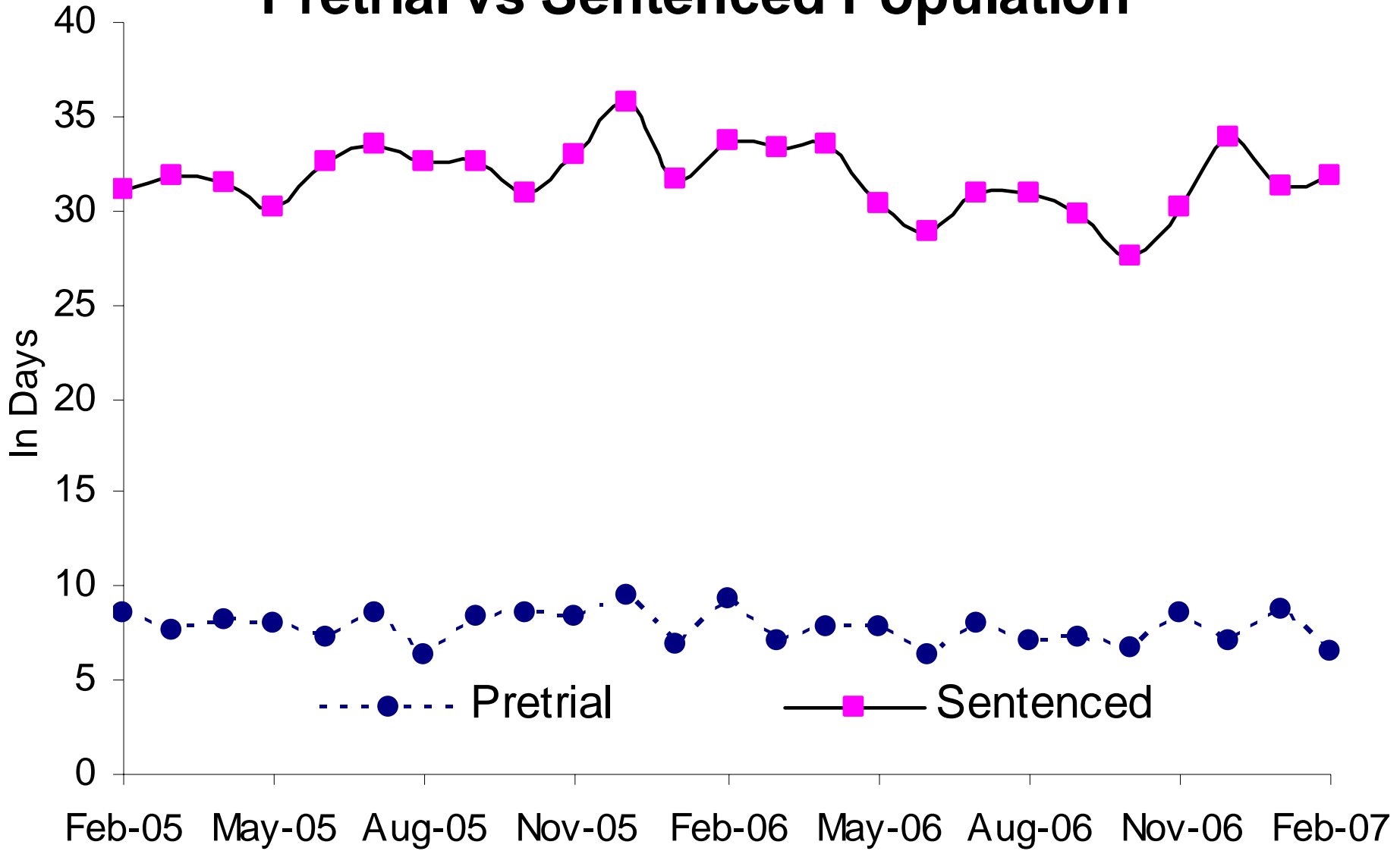


Average Length of Stay in Jail for Agency Holds

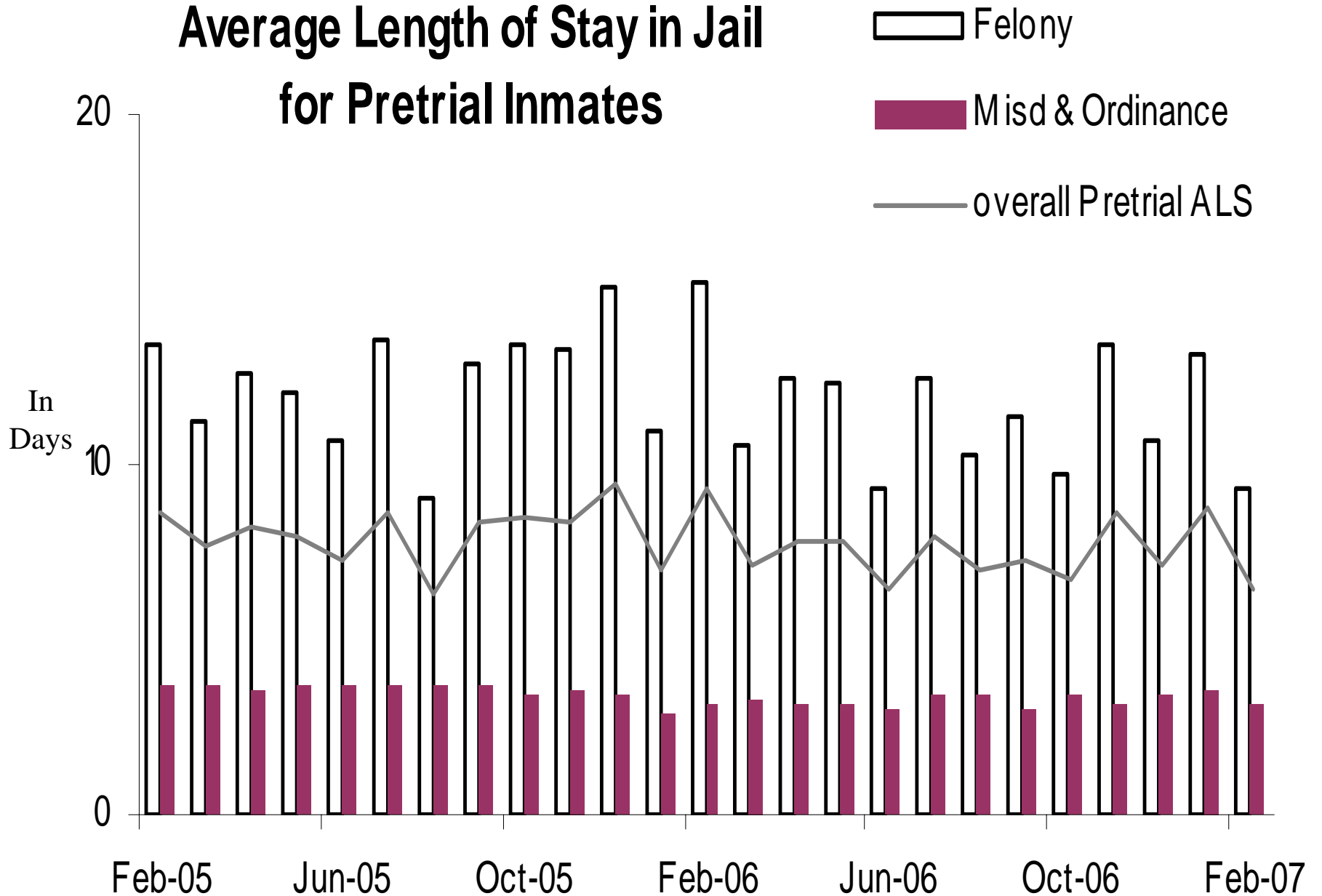


62% Dept of Corrections, 19% Federal agencies, 19% other

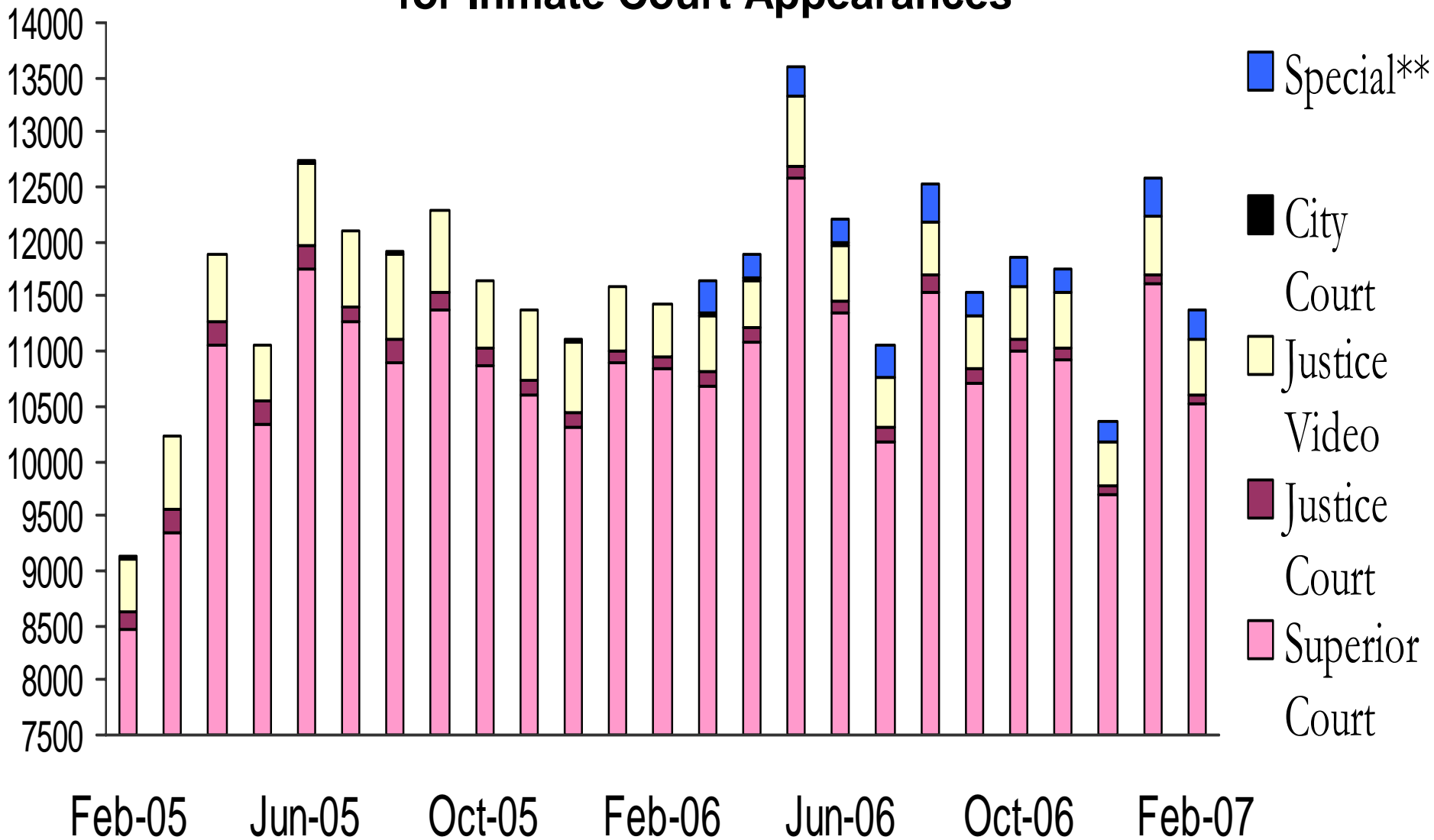
Average Length of Stay in Jail Pretrial vs Sentenced Population



Average Length of Stay in Jail for Pretrial Inmates



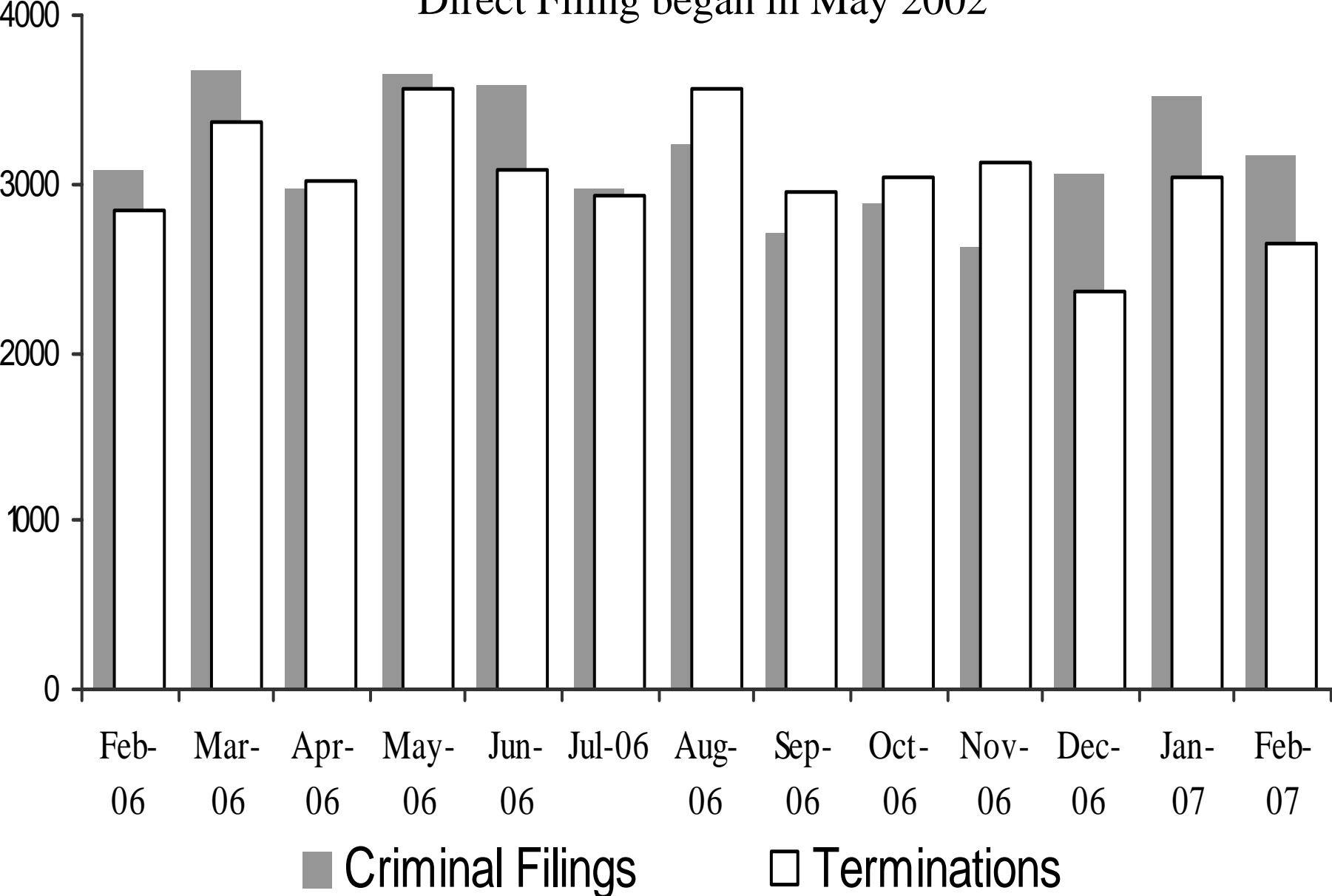
Sheriff's Office Transports for Inmate Court Appearances



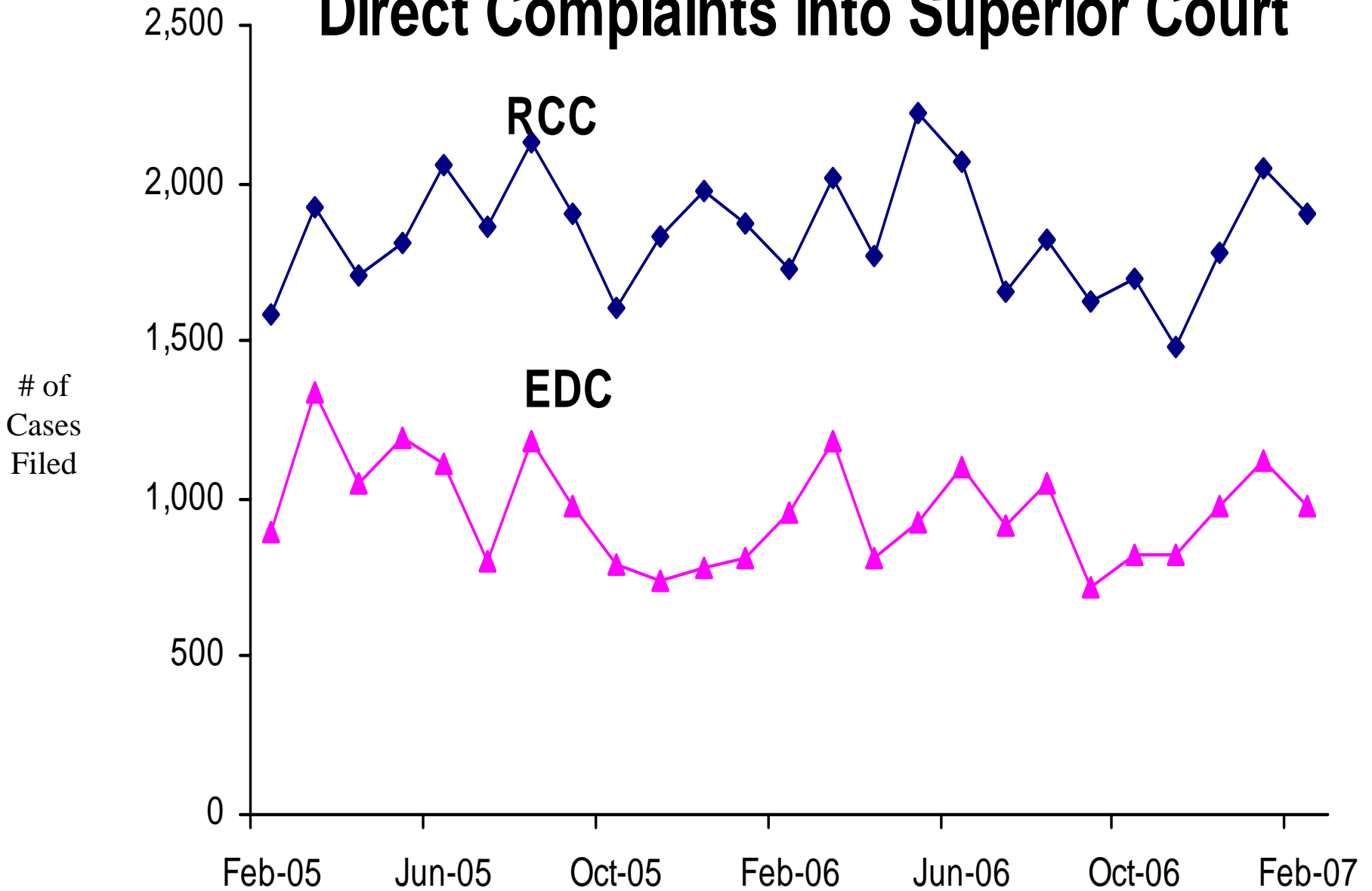
“Special” cases added in March 2006 include Downtown Remands, SEJD Remands, and SEJD Unscheduled.

Superior Court Filings and Terminations

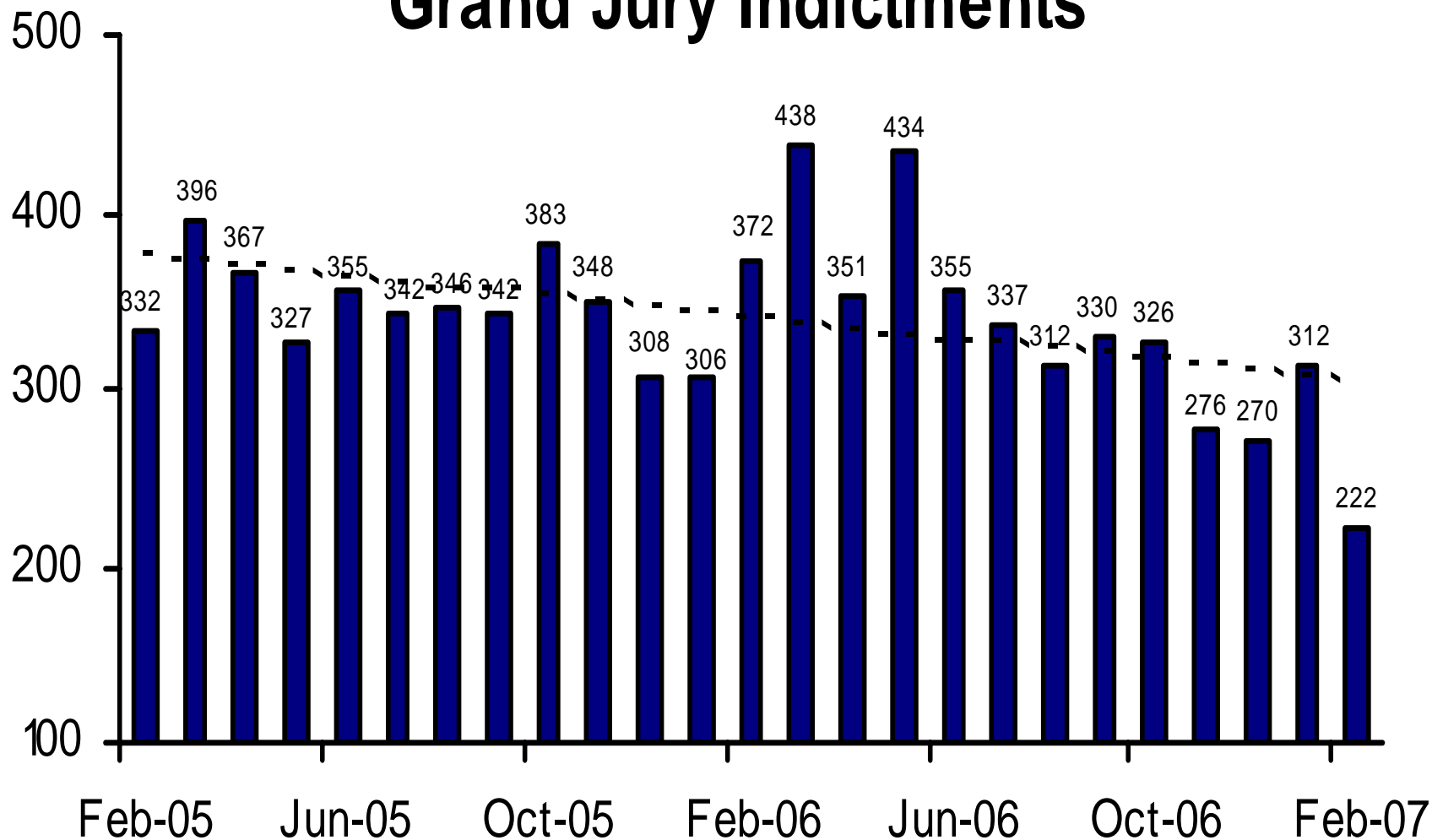
Direct Filing began in May 2002



Direct Complaints into Superior Court

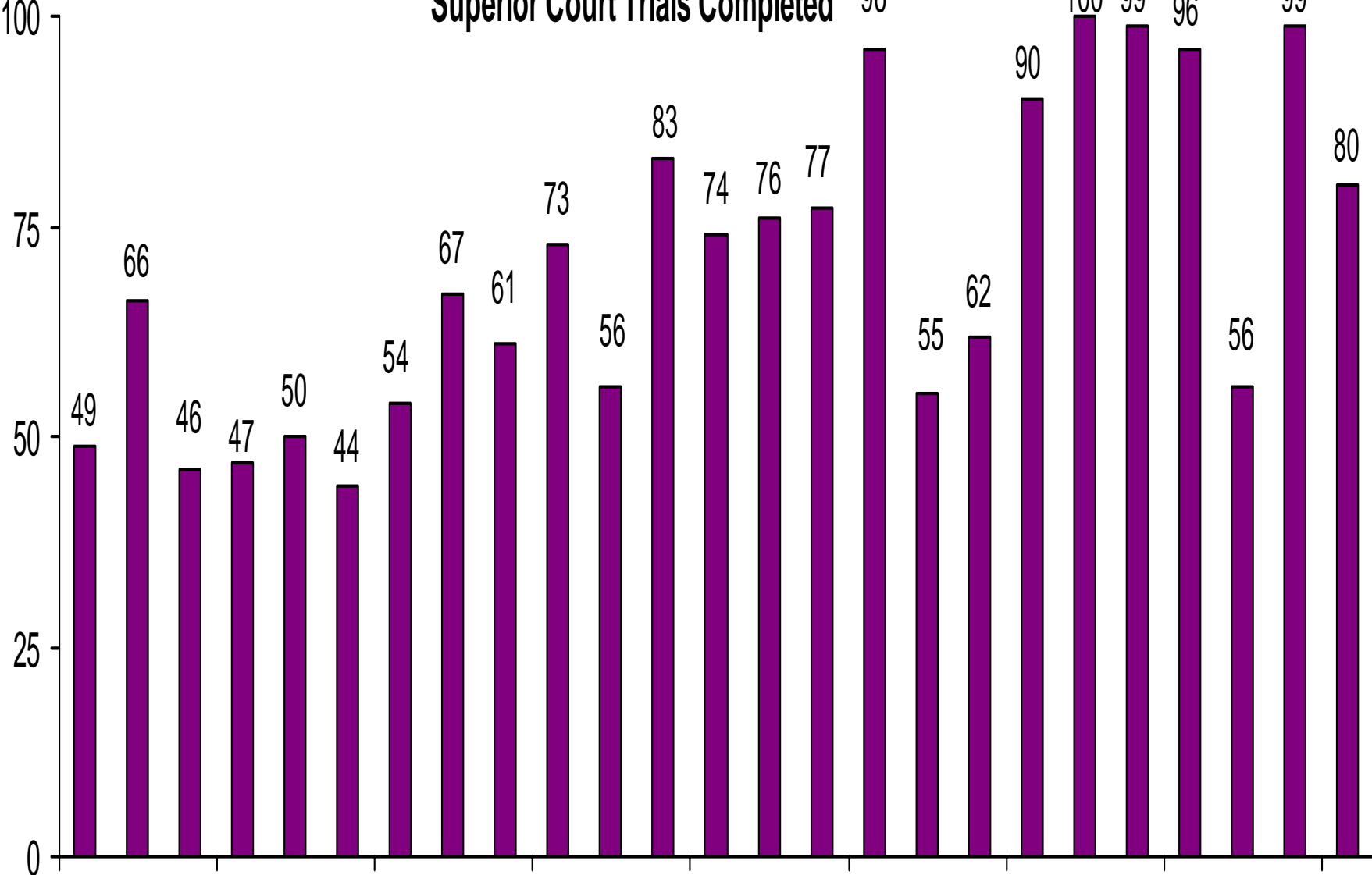


Grand Jury Indictments



These numbers do not include notices of supervening indictments, non-EDC direct complaints, and juvenile direct complaints.

Superior Court Trials Completed



Feb-05

May-05

Aug-05

Nov-05

Feb-06

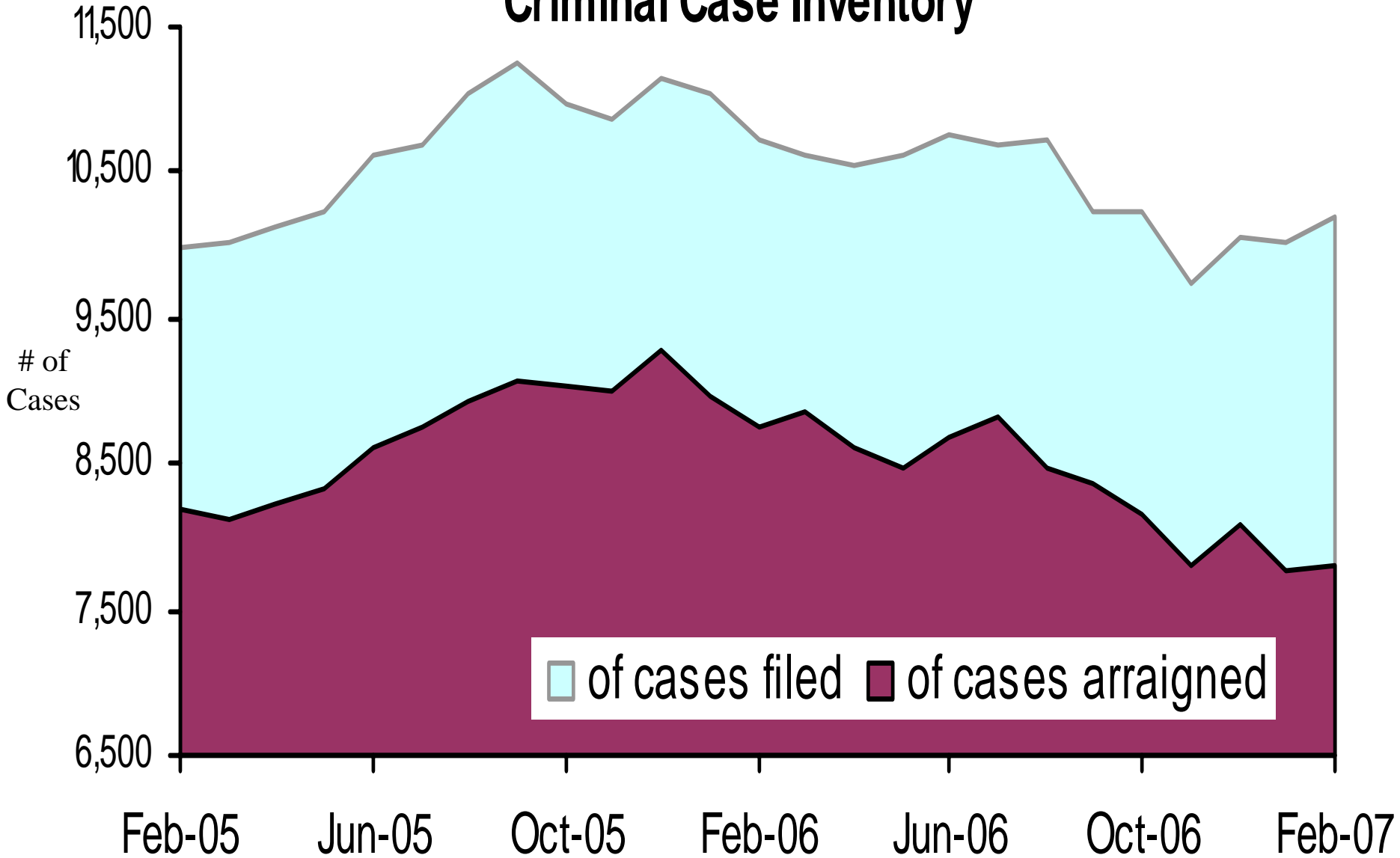
May-06

Aug-06

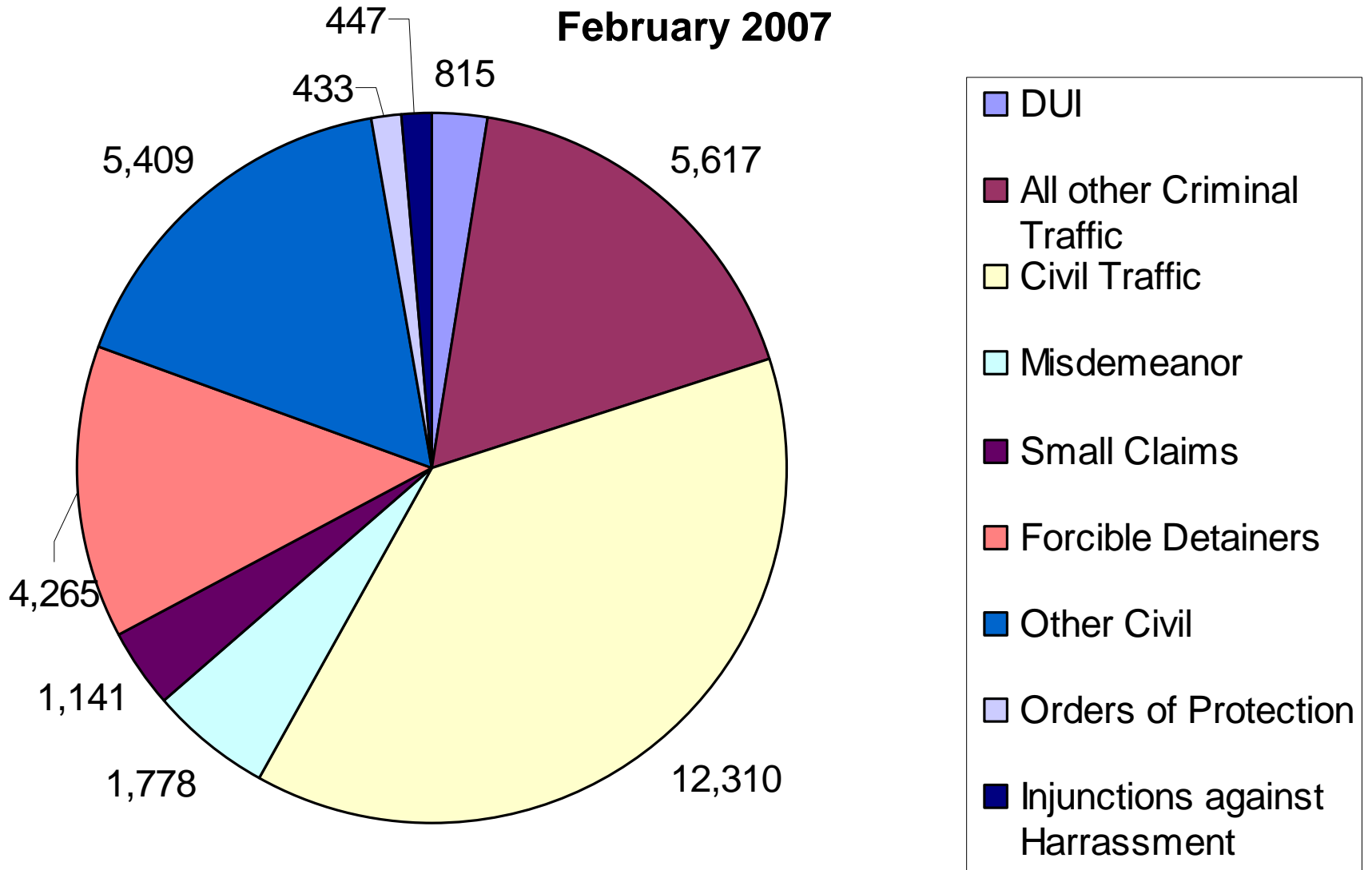
Nov-06

Feb-07

Active Pending Criminal Case Inventory



Justice Court Filings February 2007

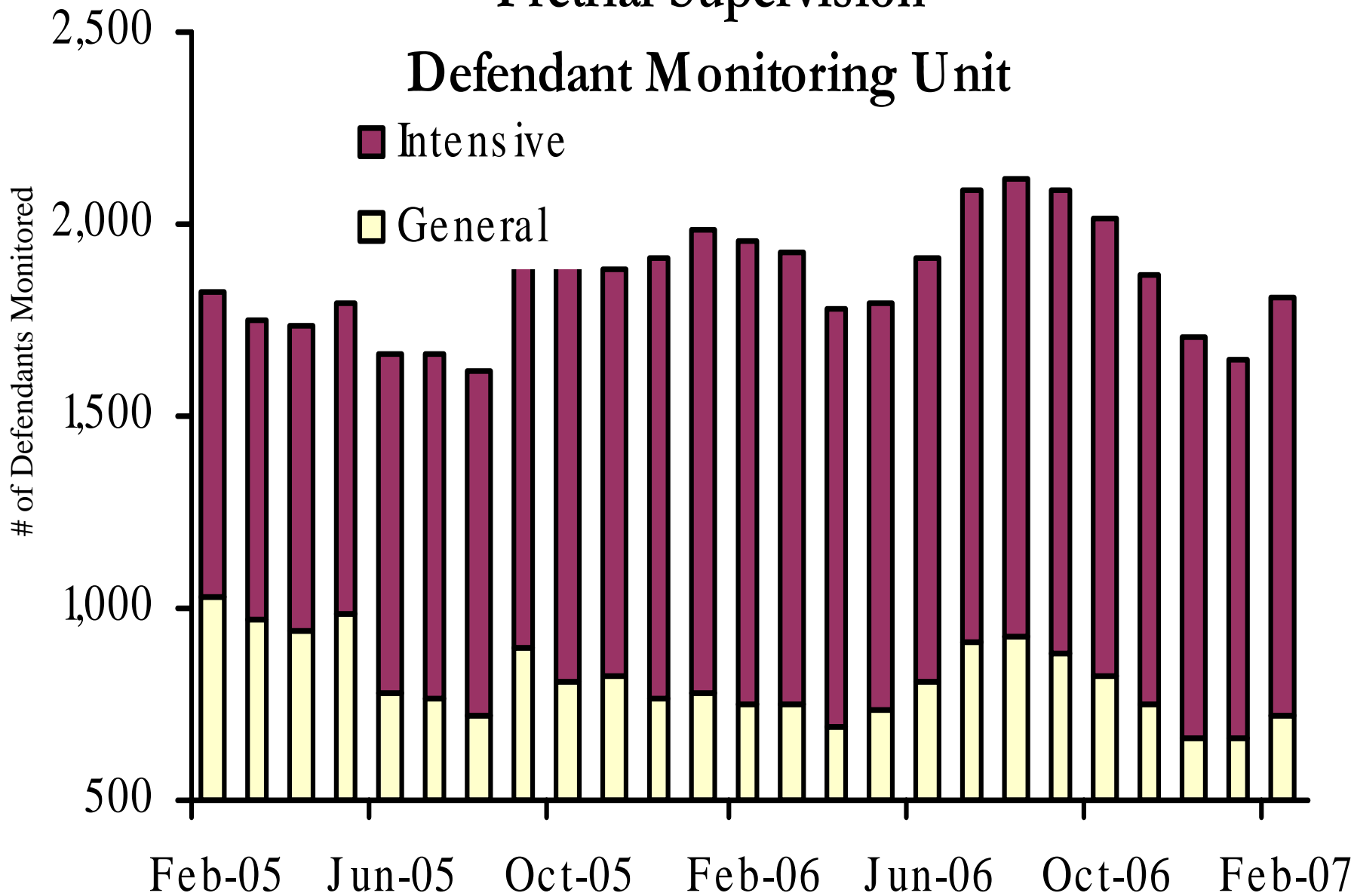


Pretrial Supervision

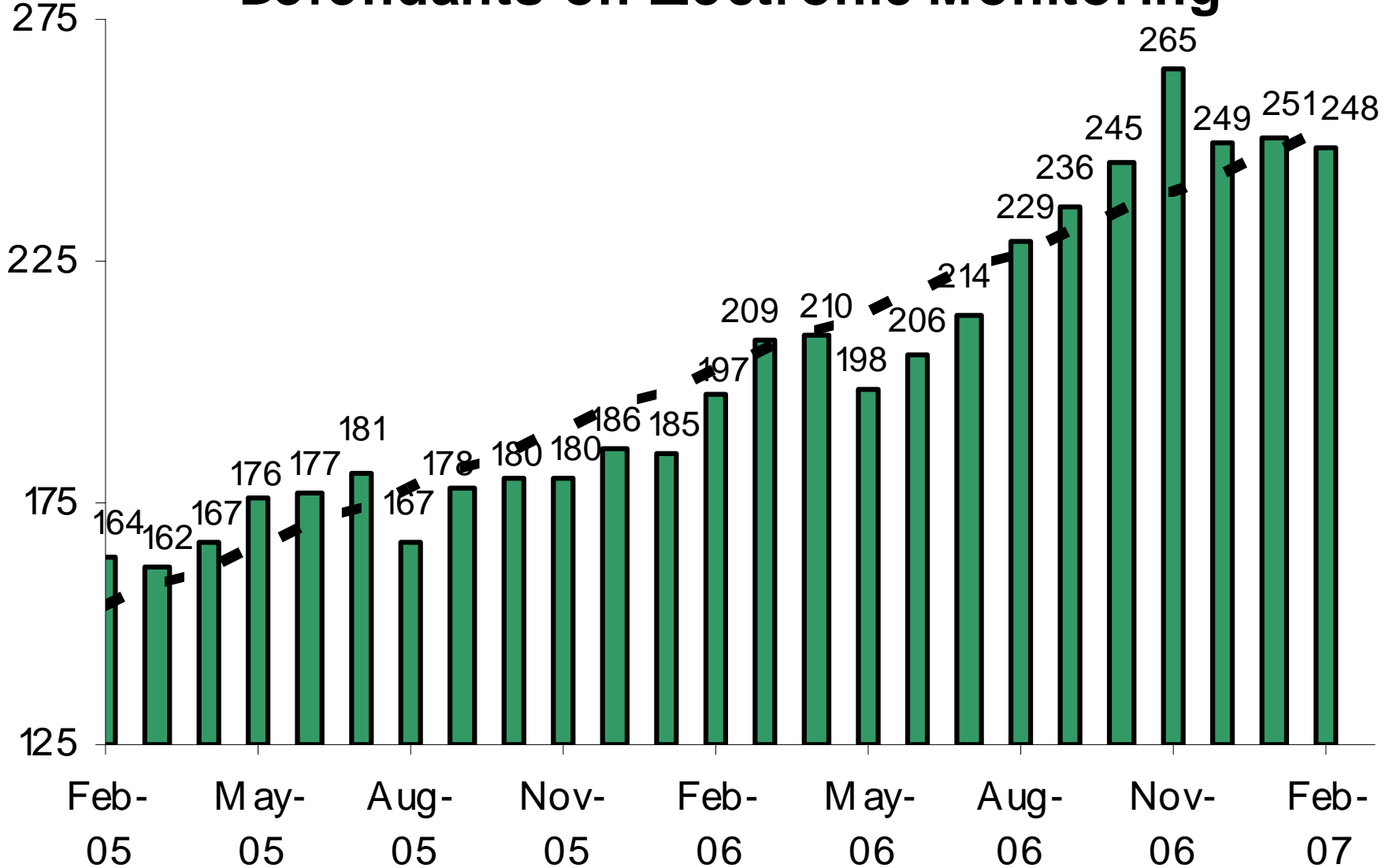
Defendant Monitoring Unit

Intensive

General

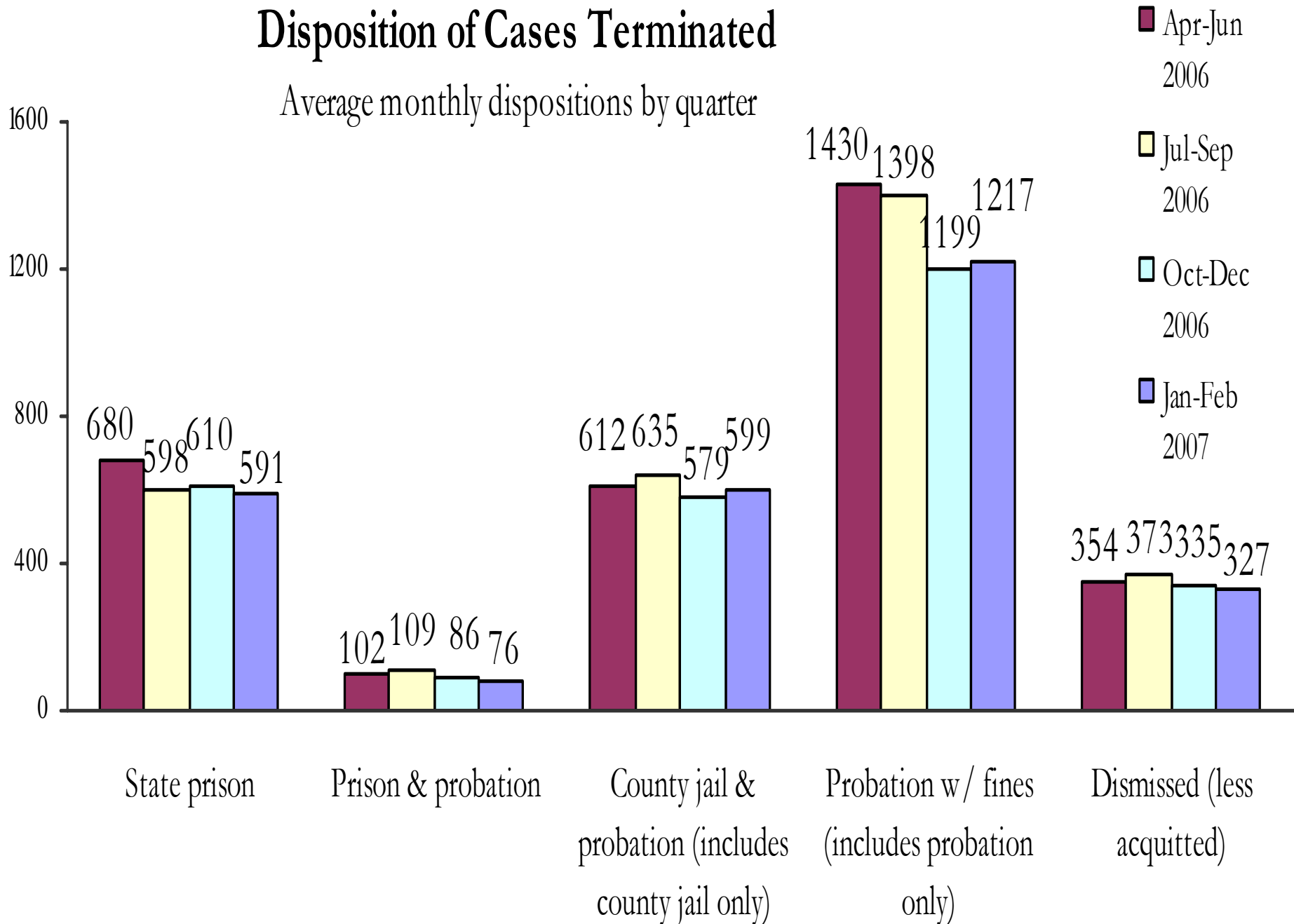


Pretrial Supervision Defendants on Electronic Monitoring

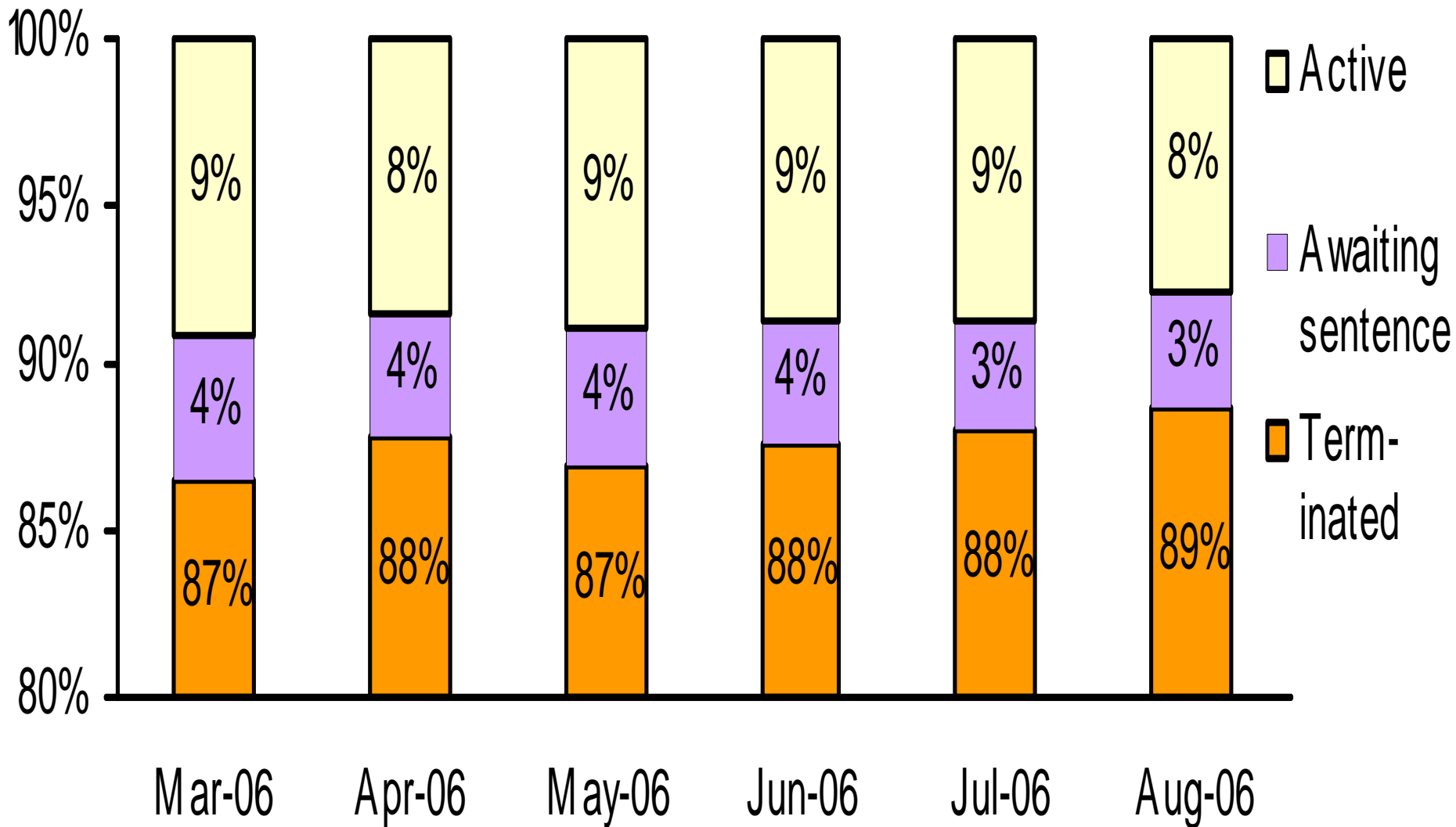


Disposition of Cases Terminated

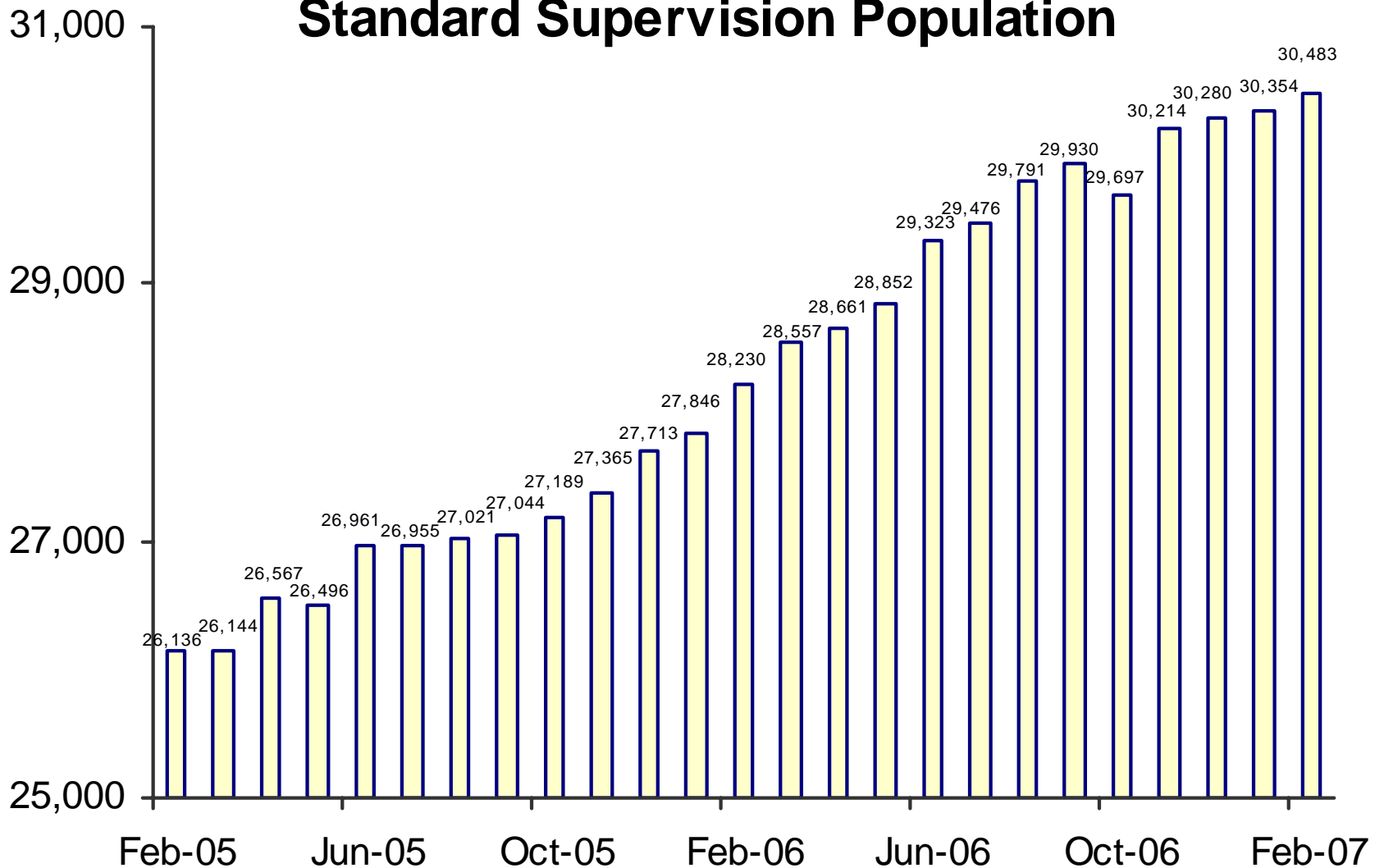
Average monthly dispositions by quarter



Status of Cases After 180 Days

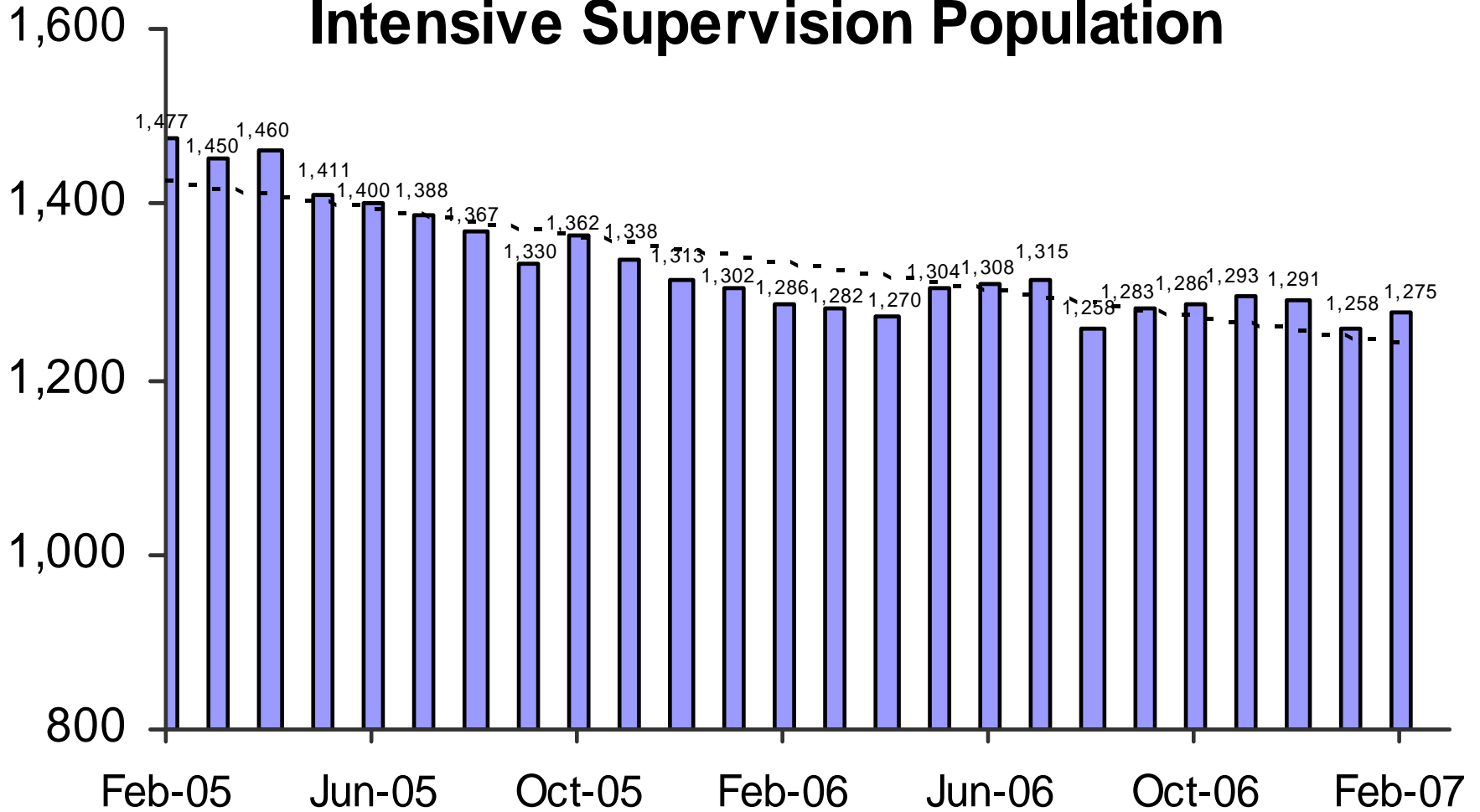


Adult Probation Standard Supervision Population

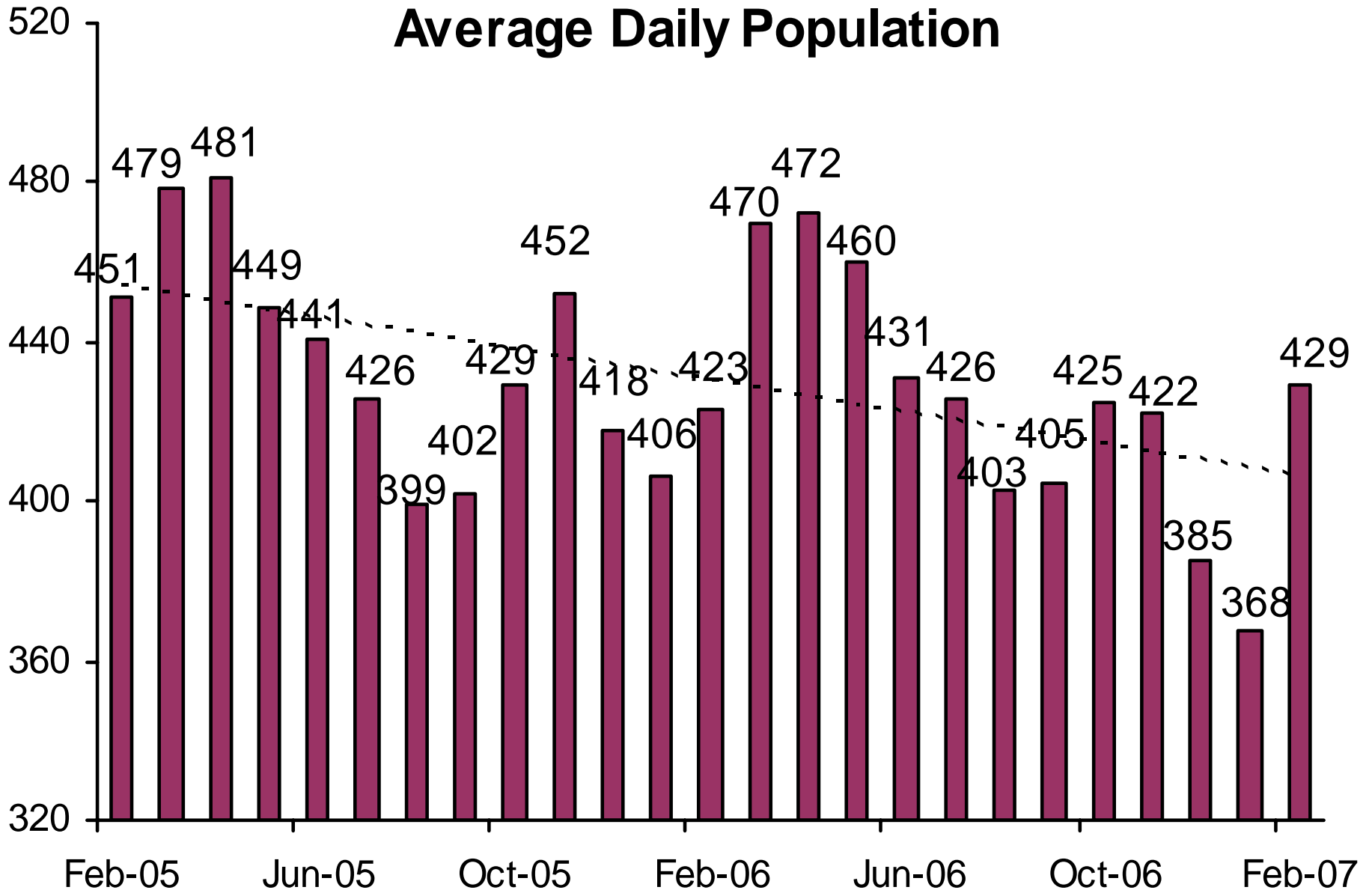


This population includes Interstate Compact and Report and Review caseloads, as reported to the Board of Supervisors and JLBC.

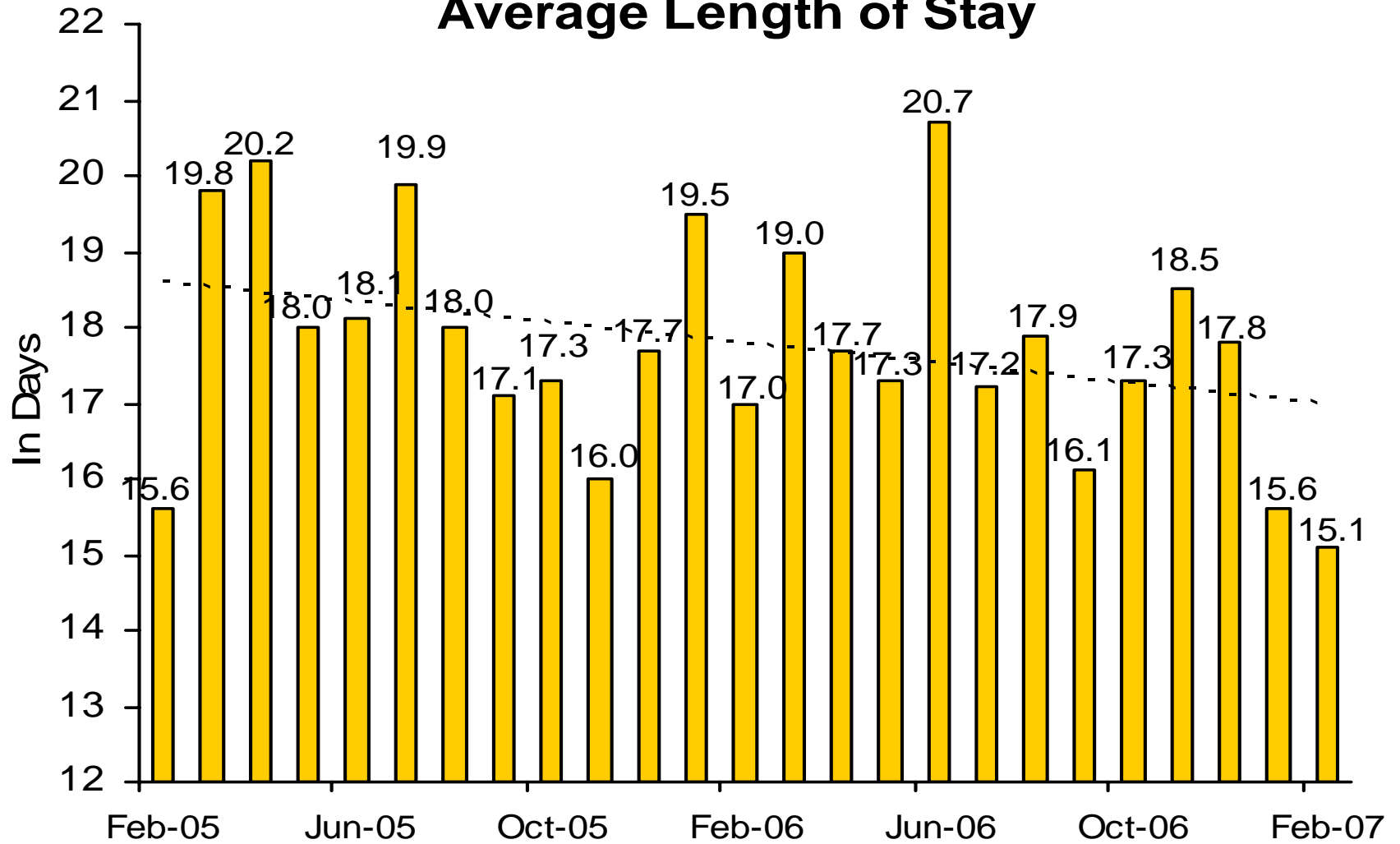
Adult Probation Intensive Supervision Population



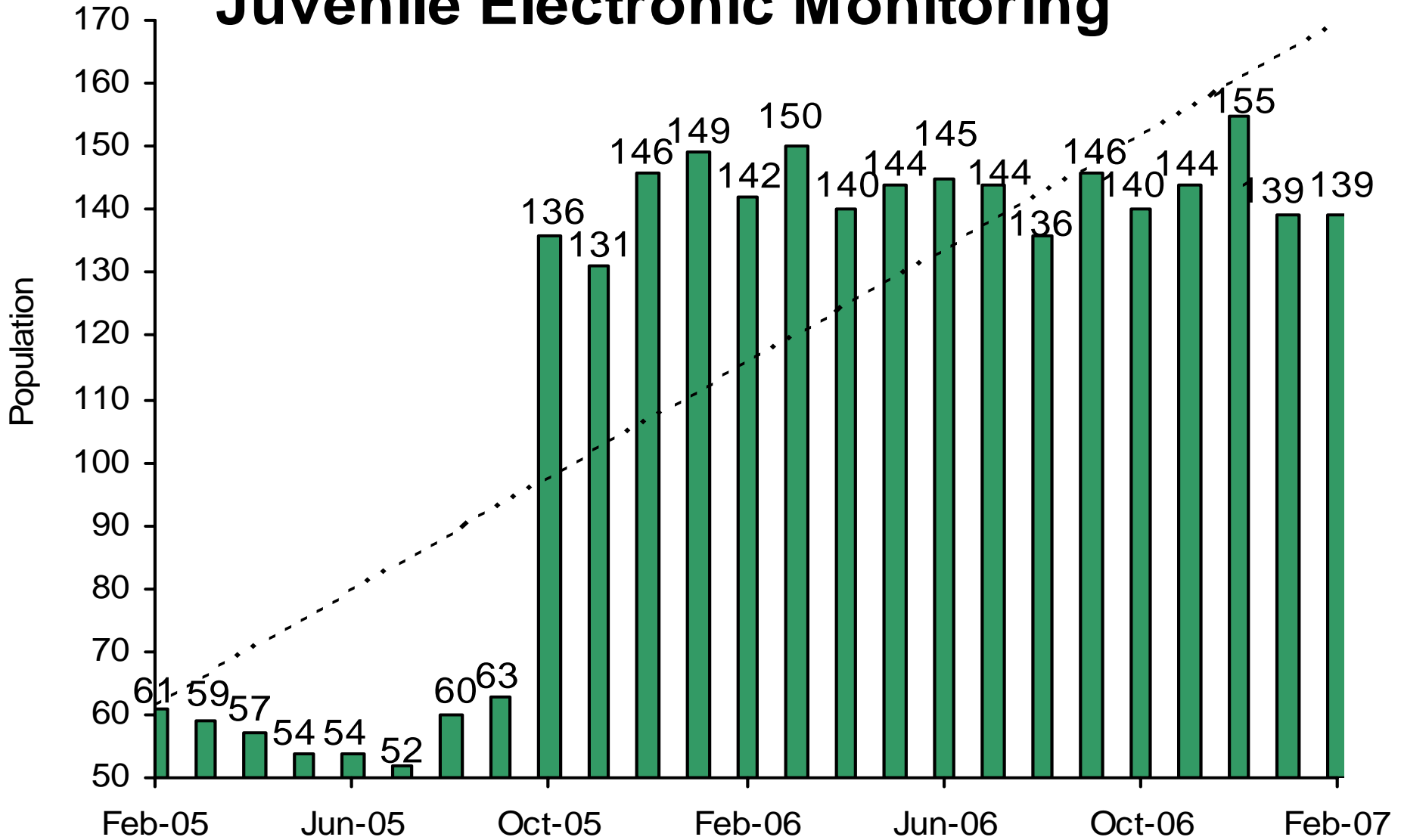
Juvenile Detention Average Daily Population



Juvenile Detention Average Length of Stay

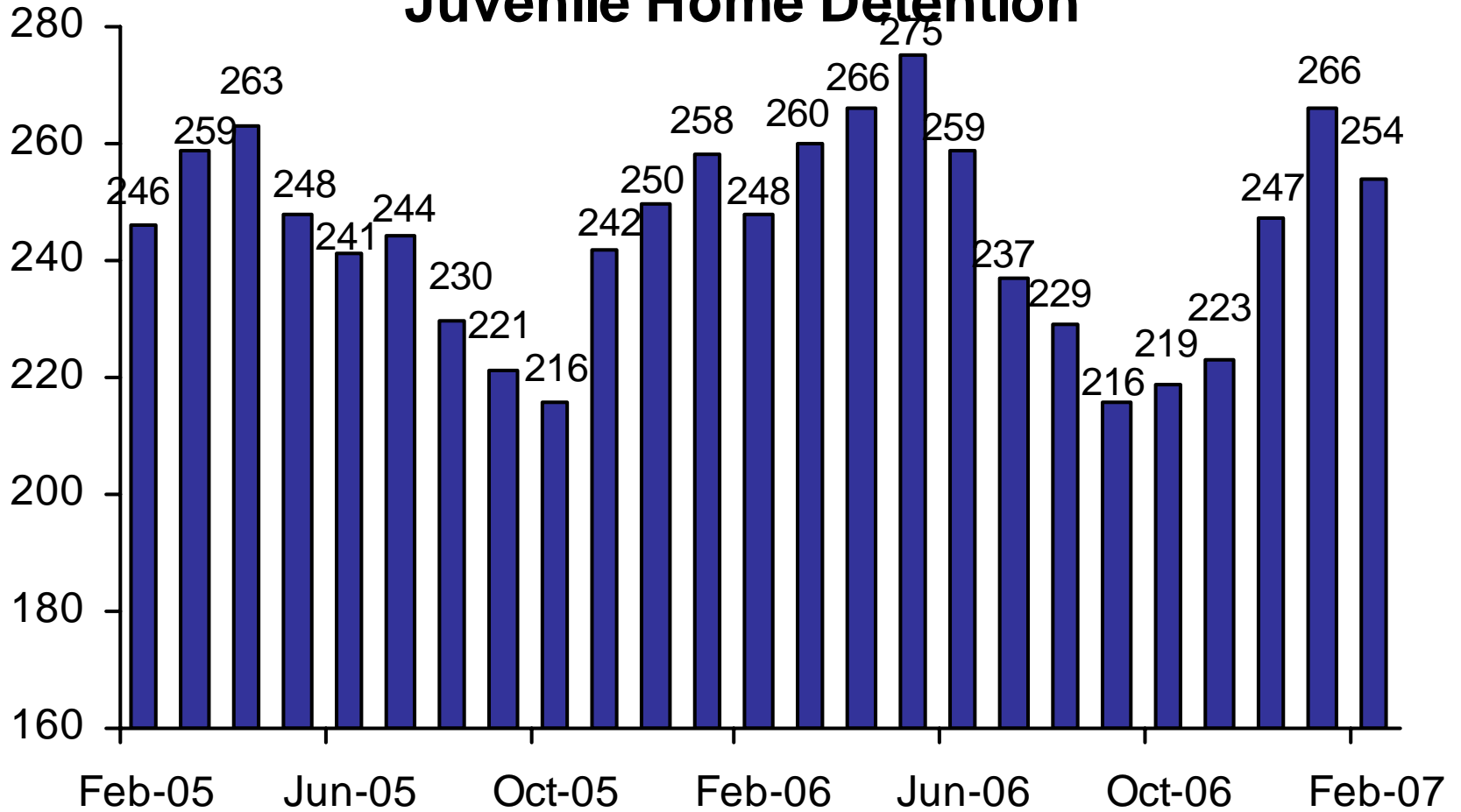


Juvenile Electronic Monitoring



The increase beginning in October 2005 is due to more accurate data collection, including counting Intensive Probation use in addition to Standard use.

Juvenile Home Detention



Juvenile Probation

■ # on standard probation ■ # on intensive probation

