



Monthly Performance Report for July 2005

Monthly Averages						
	FY 2002	FY 2003	FY 2004	FY 2005	FY 2006	July 2005
Sheriff's Office						
Bookings	9,641	9,875	10,176	9,975	10,124	10,124
Average Daily Population	7,557	8,044	8,657	9,054	9,614	9,614
Avg Length of Stay (in days)	23.8	24.4	26.0	27.7	29.4	29.4
Superior Court						
Filings	2,515	2,904	3,062	2,996	3,038	3,038
Terminations	2,367	2,330	2,612	2,758	2,636	2,636
Clearance Rate	94%	80%	85%	93.0%	86.8%	86.8%
Active Pending Inventory	7,419	8,123	9,106	10,002	10,697	10,697
Trials Completed	61	59	42	51	44	44
Trial Rate	2.4%	2%	1.4%	1.7%	1.4%	1.4%
Adult Probation						
Pretrial General Supervision	609	700	974	978	765	765
Pretrial Intensive Supervision	356	331	672	816	903	903
Pretrial Electronic Monitoring	78	97	154	164	181	181
Standard Probation Supervision	24,448	25,400	23,957	26,091	26,955	26,955
Intensive Probation Supervision	1,564	1,267	1,079	1,456	1,388	1,388
Juvenile Probation and Detention						
Avg Daily Detention Pop	407	401	431	443	426	426
Avg Length of Stay (in days)	14.7	15.1	16.6	18.7	19.9	19.9

Criminal Justice System News

Adult Incarceration: Bookings fell in July (10,124) to the lowest number since February 2005. However, the average daily population and the average length of stay were the highest they have ever been. The ALOS increased nearly a day and a half from June's 28.0 to July's 29.4 days.

The ALOS for all pretrial populations increased in July, with the felony population seeing the largest increase (10.6 days in June to 13.6 days in July, the highest since November 2004).

Filings & Case Processing: Superior Court filings and terminations decreased during the first month of the FY. The active pending case inventory increased from 10,603 in June to 10,697 in July, the highest ever, while active arraigned cases increased from 8,614 to 8,746. RCC direct filings decreased from 2,055 in June to 1,859 in July. EDC/Direct Complaints also saw a large decrease, from 1,111 to 800.

Adult Probation: Pretrial intensive supervision and electronic monitoring increased in July to their highest numbers ever, while pretrial general supervision fell slightly. (Please note: July pretrial numbers are "soft" due to conversion to iCIS.)

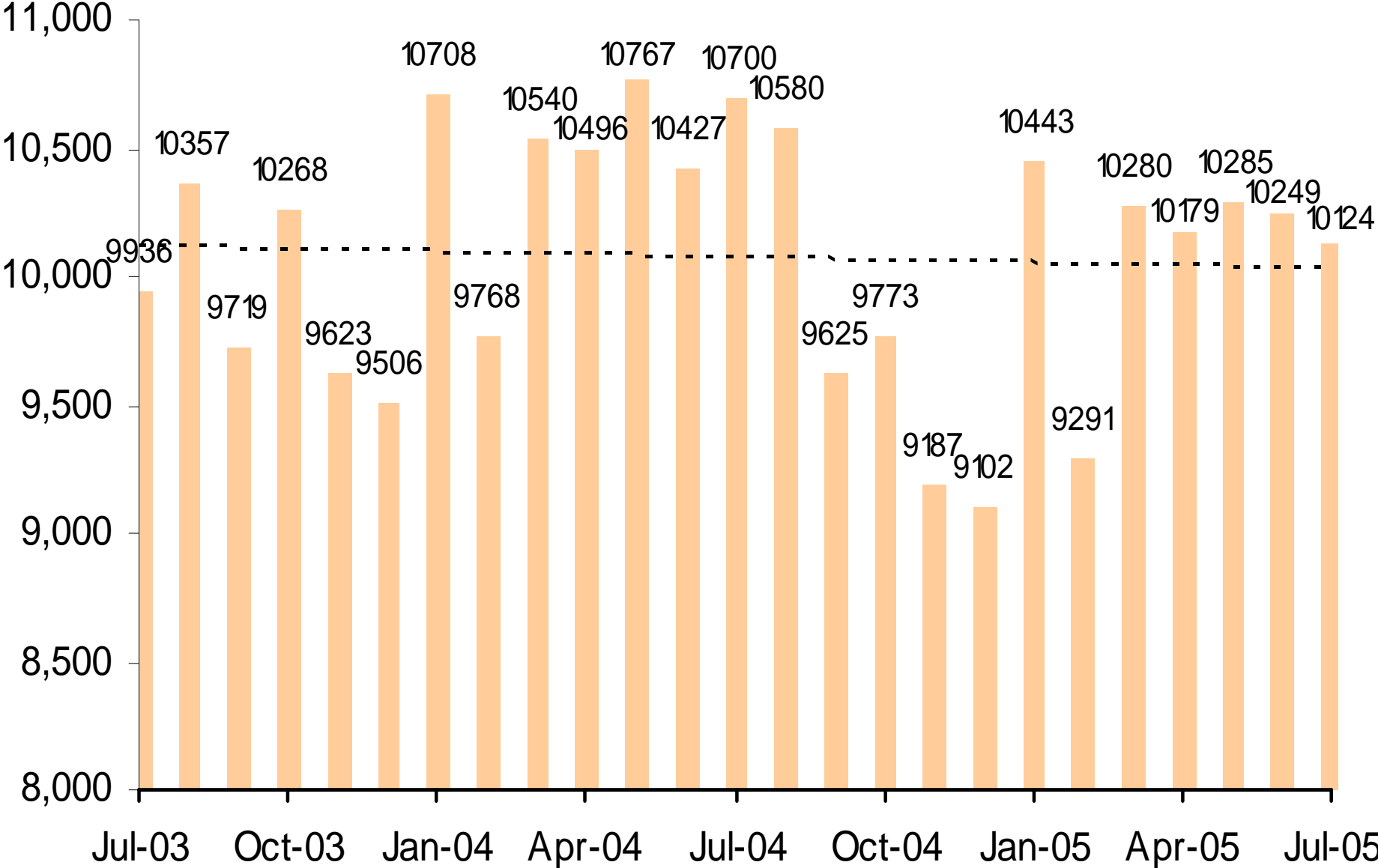
Levels of standard and intensive probation supervision decreased from June to July. Standard probation supervision went from 26,961 to 26,955 while intensive probation supervision went from 1,400 to 1,388.

Juvenile Detention: The average daily population continued to fall, to its lowest level since January 2005. However, the average length of stay increased nearly 2 days, from 18.1 in June to 19.9 days in July.

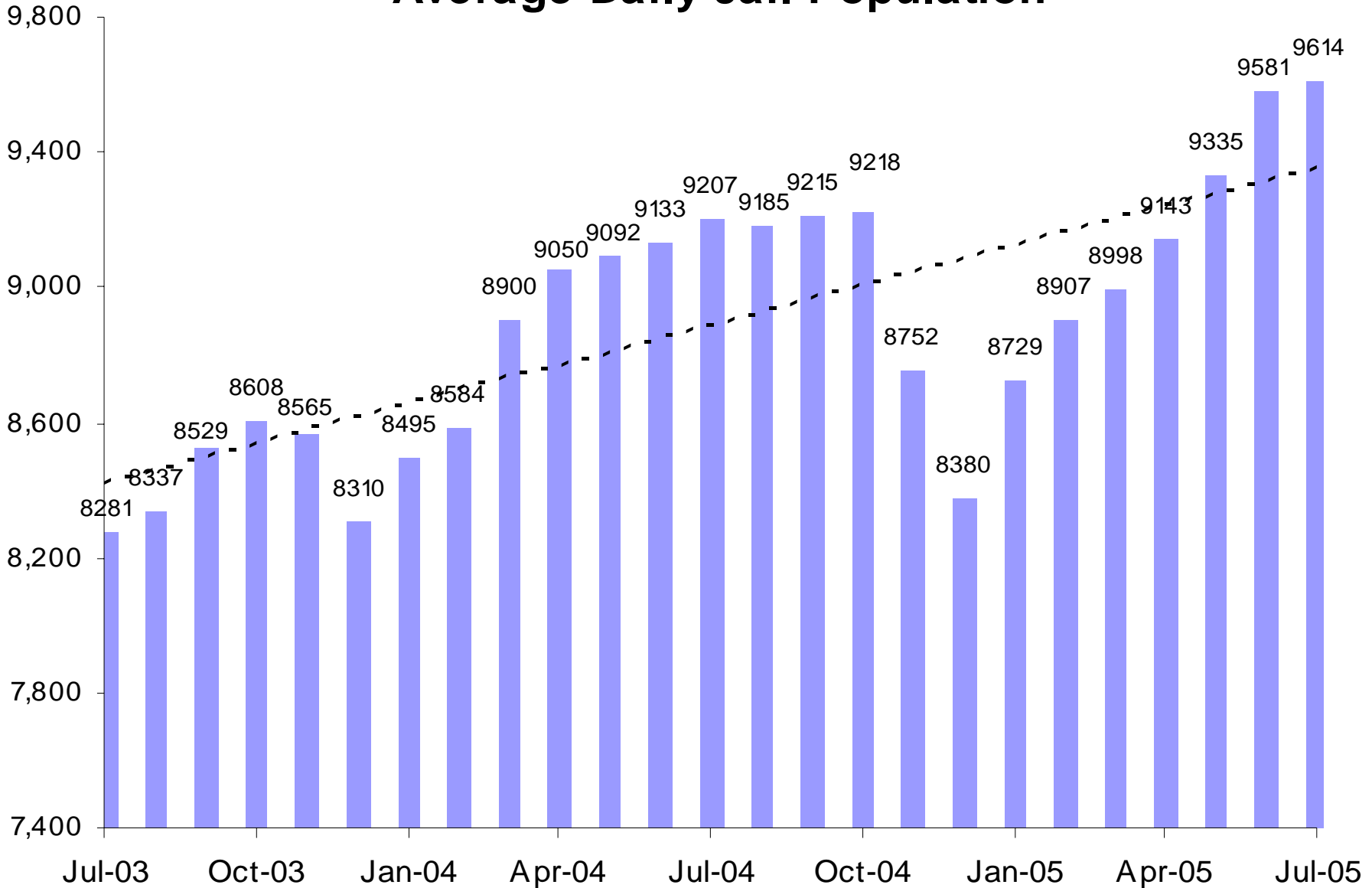
*****For recipients outside the County e-mail system*****
This report is now available on-line. Please contact Amy Rex at rexa@mail.maricopa.gov if you are interested in receiving an on-line version instead of a hard copy. Thank you for helping to protect our resources!

A criminal justice system-wide goal is to enhance the utility and timeliness of management information on case processing, in an effort to help agencies effectively address current events. An interagency committee of McJustice meets regularly to accomplish this and develop this report. Input from readers is welcomed. Please contact Amy Rex at rexa@mail.maricopa.gov or 602-506-1310.

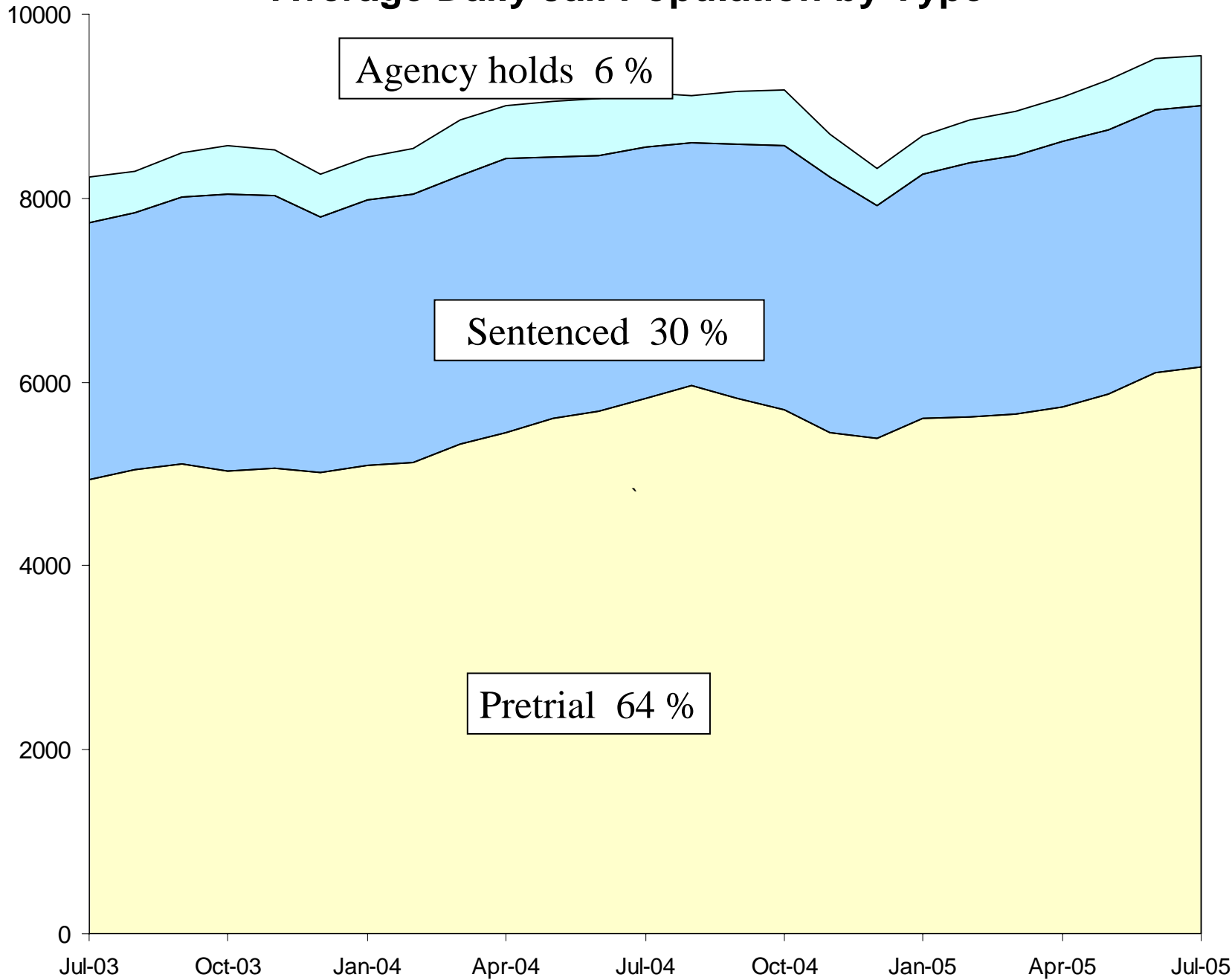
Jail Bookings



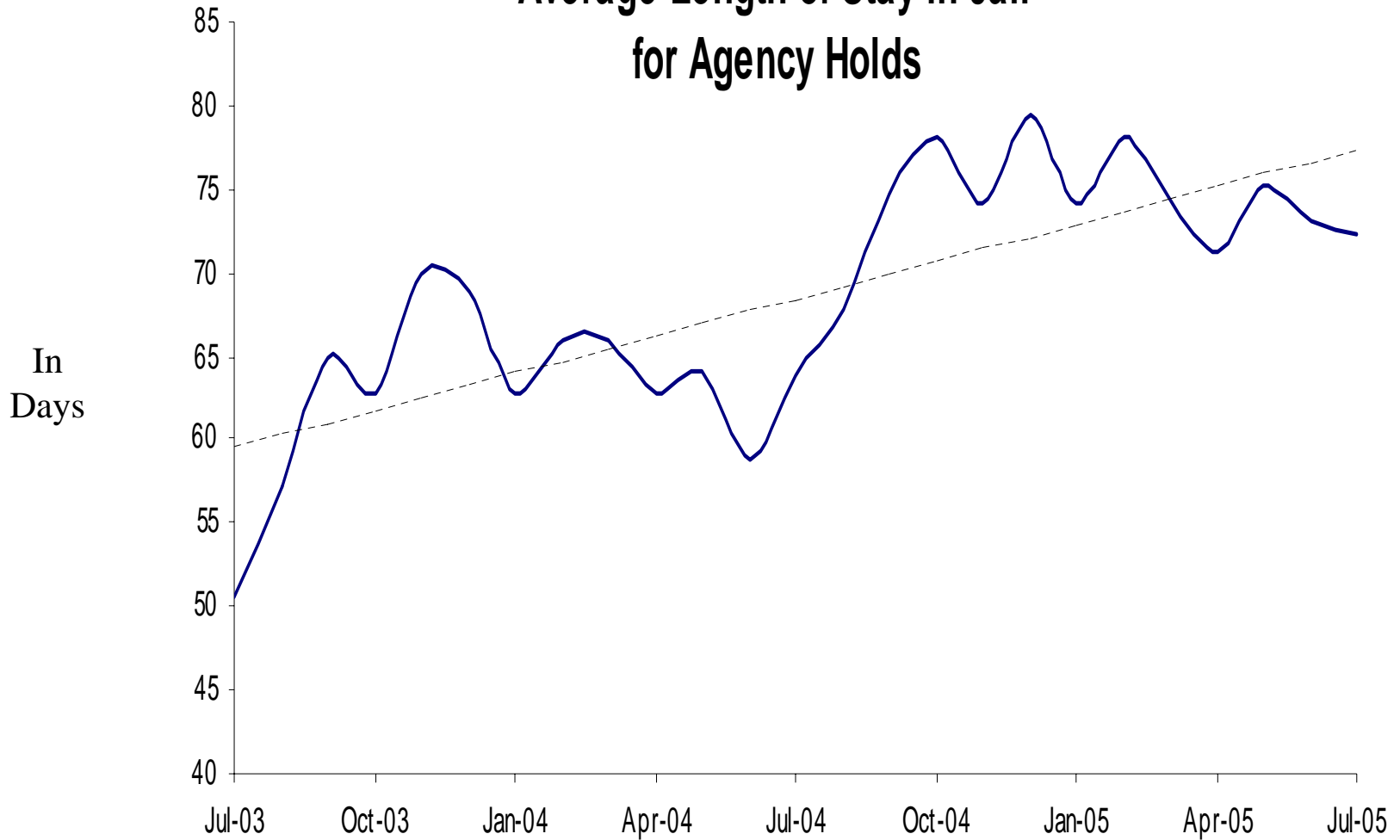
Average Daily Jail Population



Average Daily Jail Population by Type

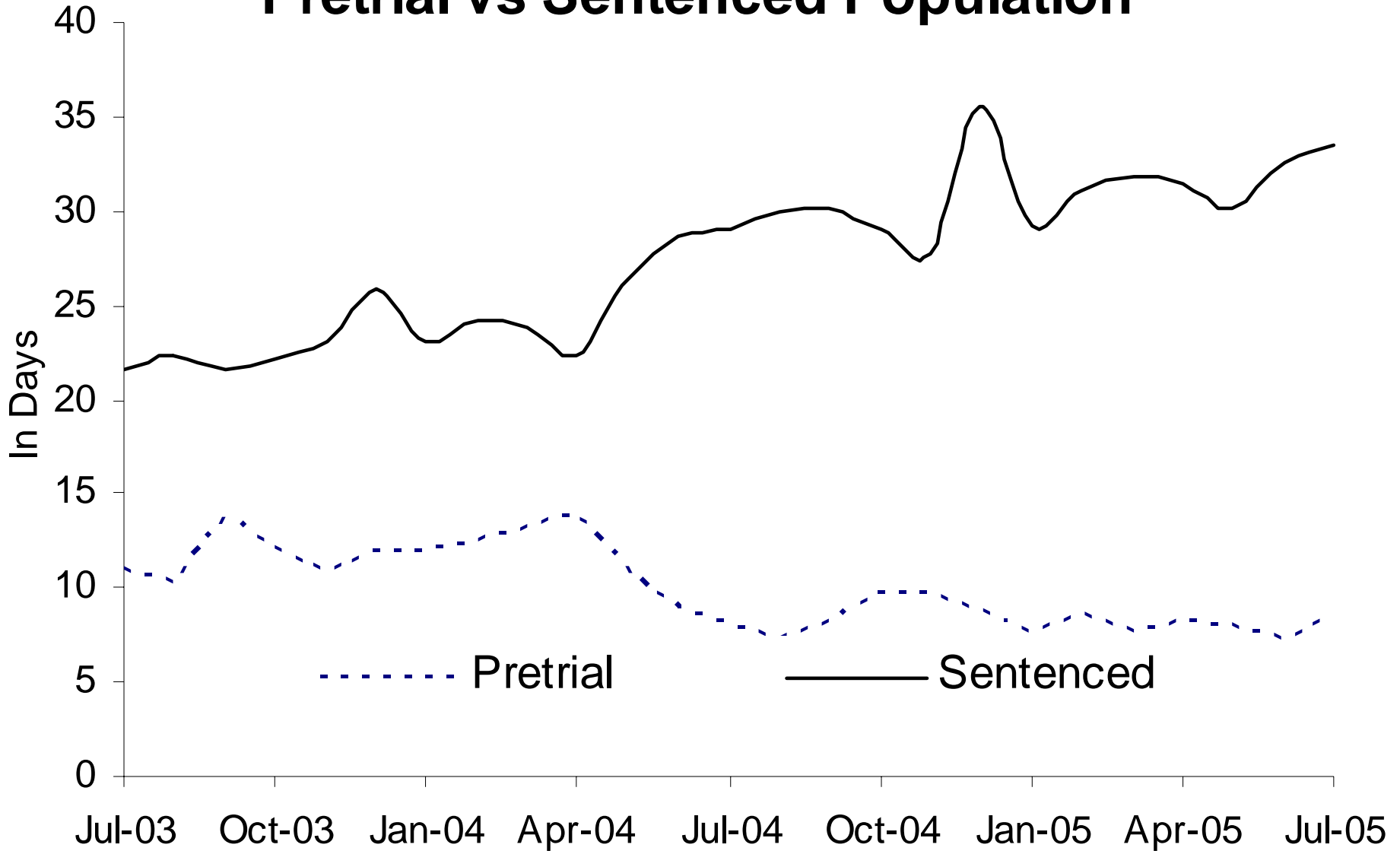


Average Length of Stay in Jail for Agency Holds

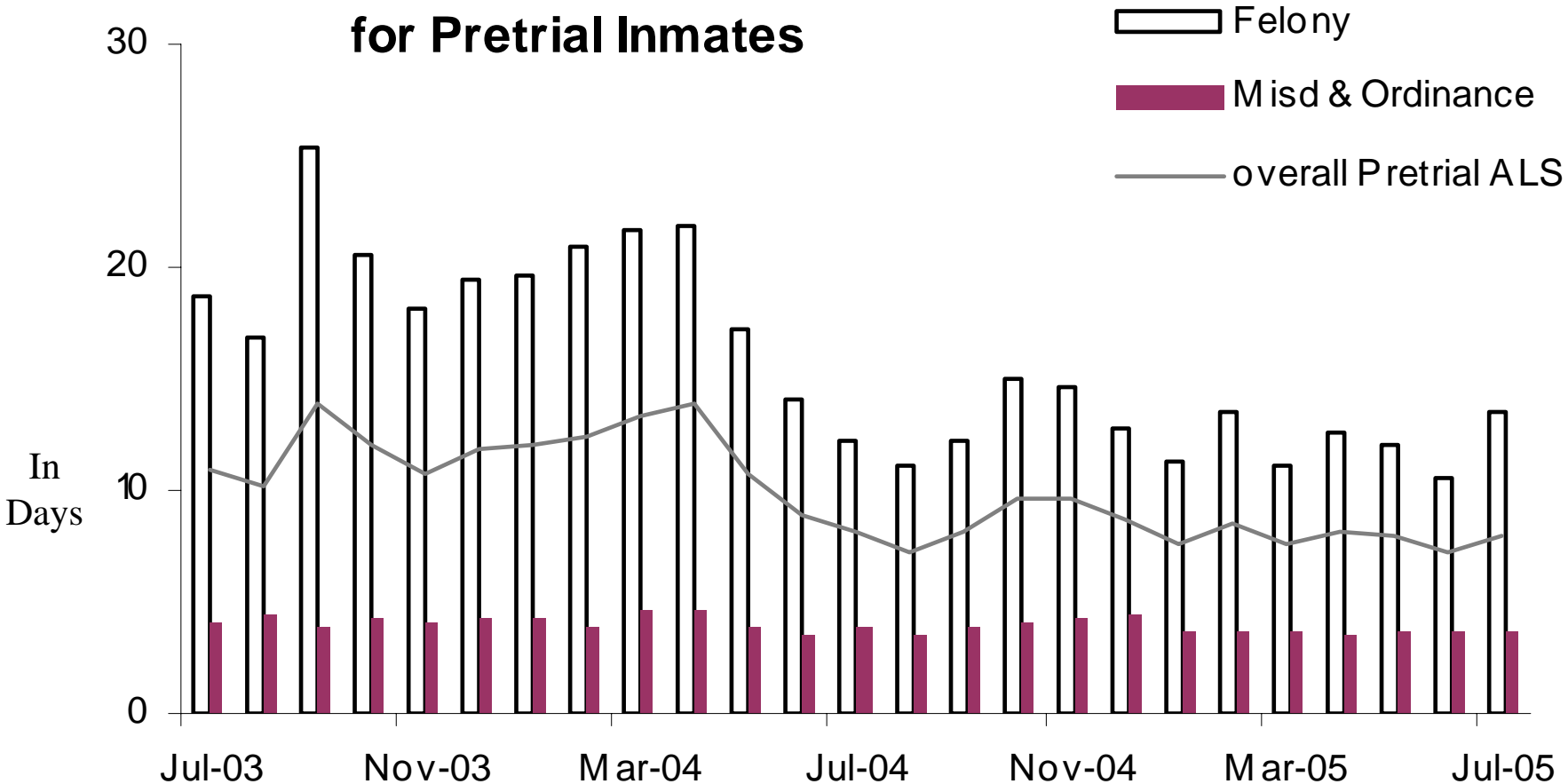


73% Dept of Corrections, 13% Federal agencies, 14% other

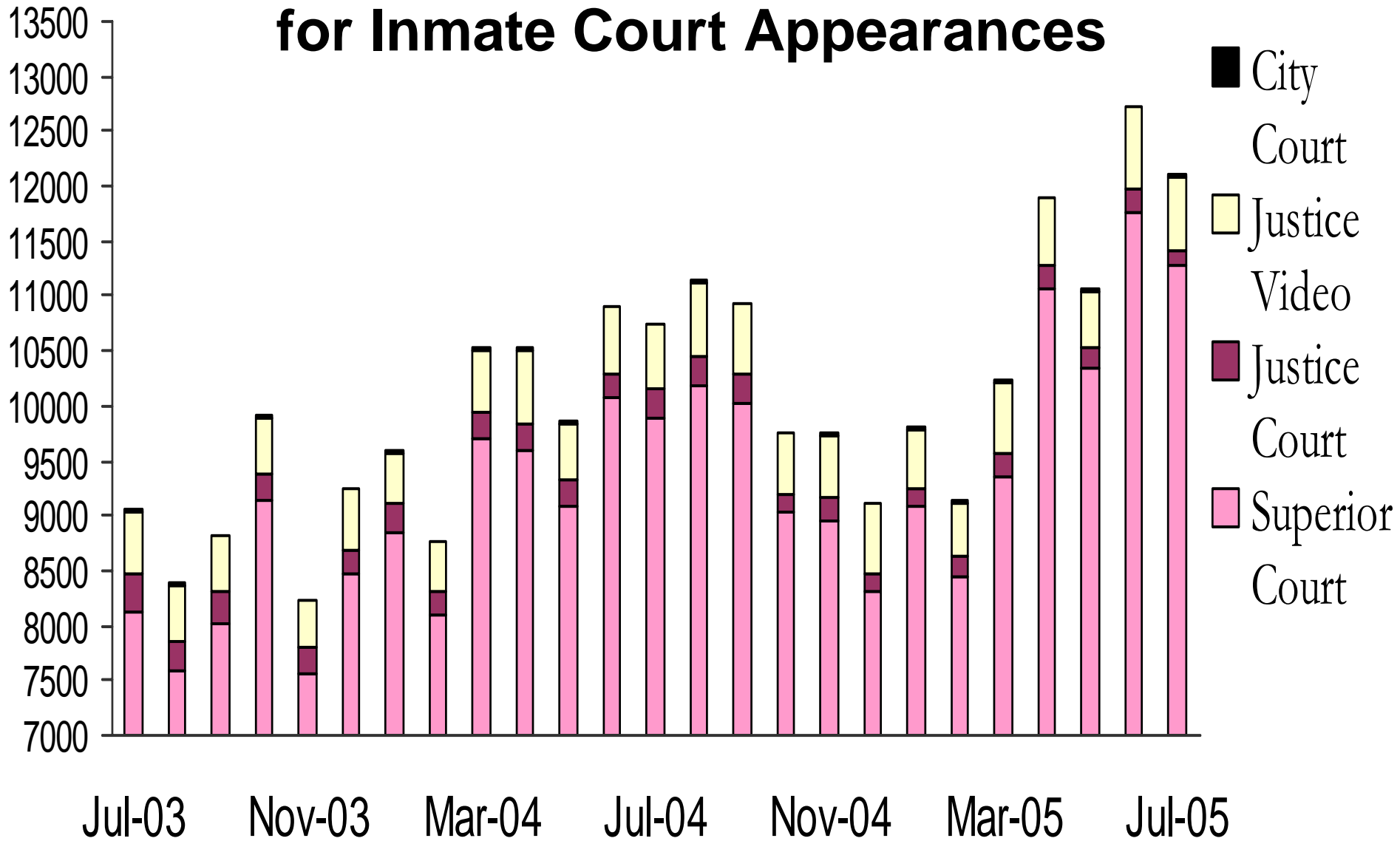
Average Length of Stay in Jail Pretrial vs Sentenced Population



Average Length of Stay in Jail for Pretrial Inmates



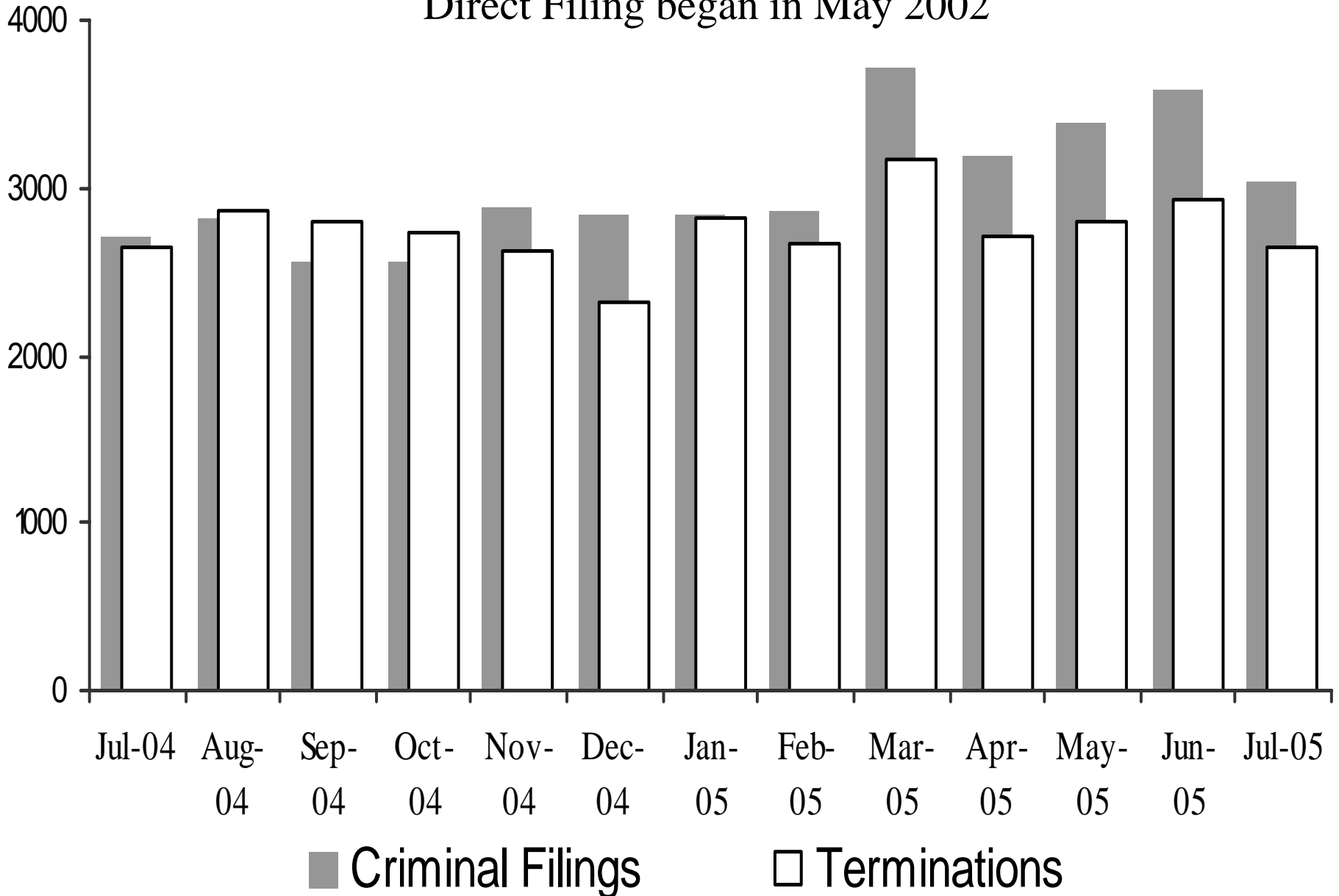
Sheriff's Office Transports for Inmate Court Appearances



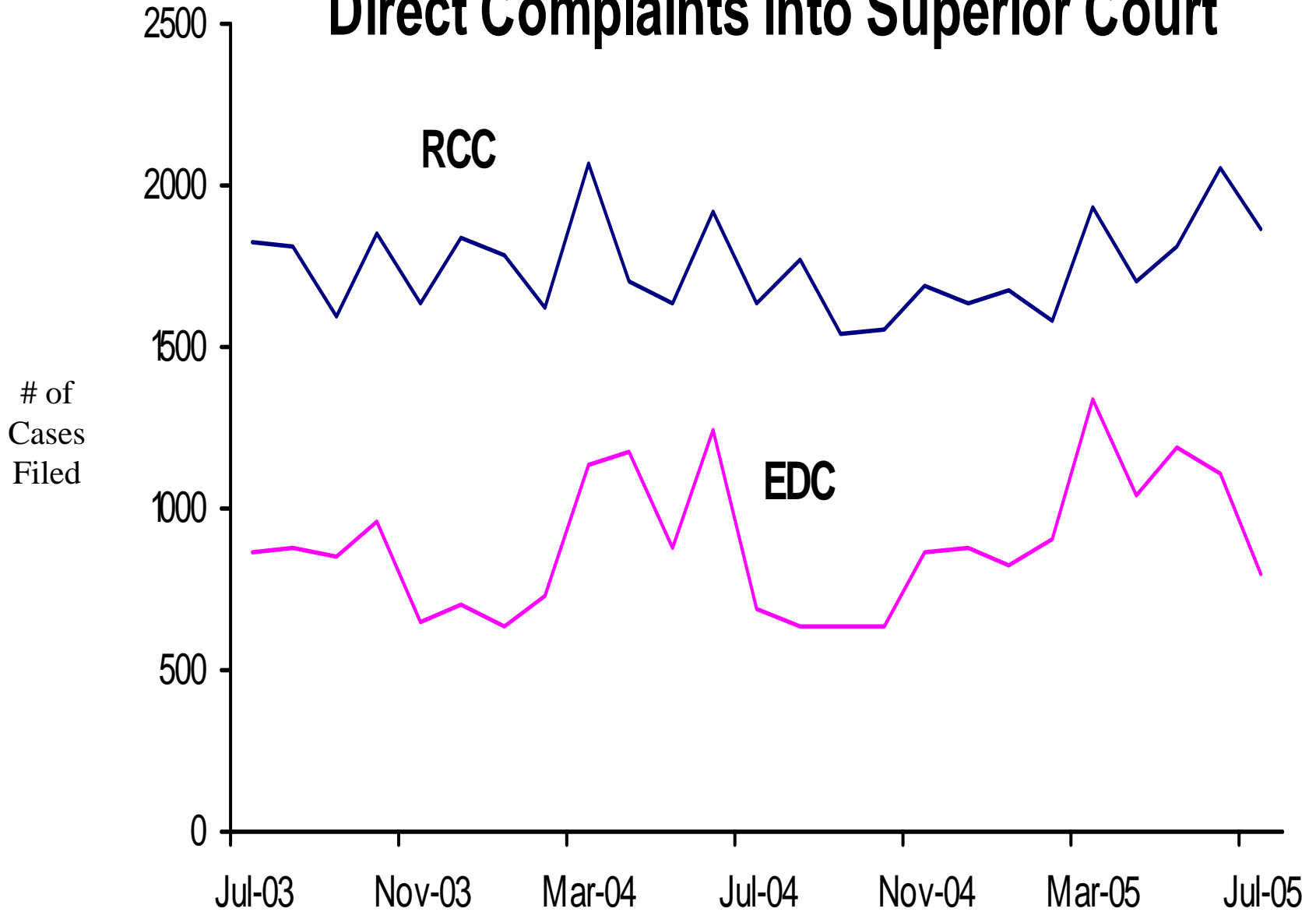
Since Direct Filing into Superior Court began May 2002, remaining transports to Justice Courts are for misdemeanor cases.

Superior Court Filings and Terminations

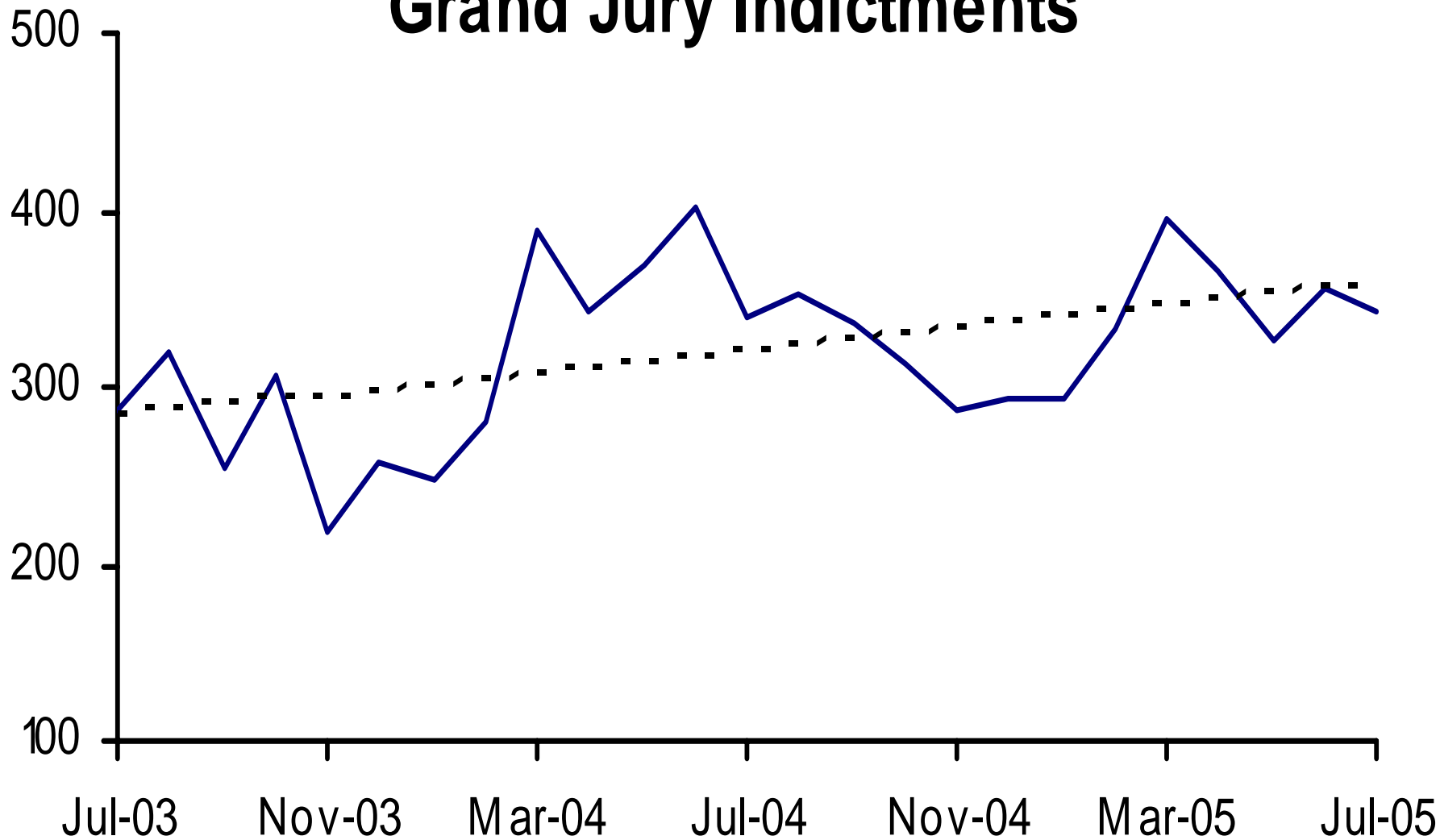
Direct Filing began in May 2002



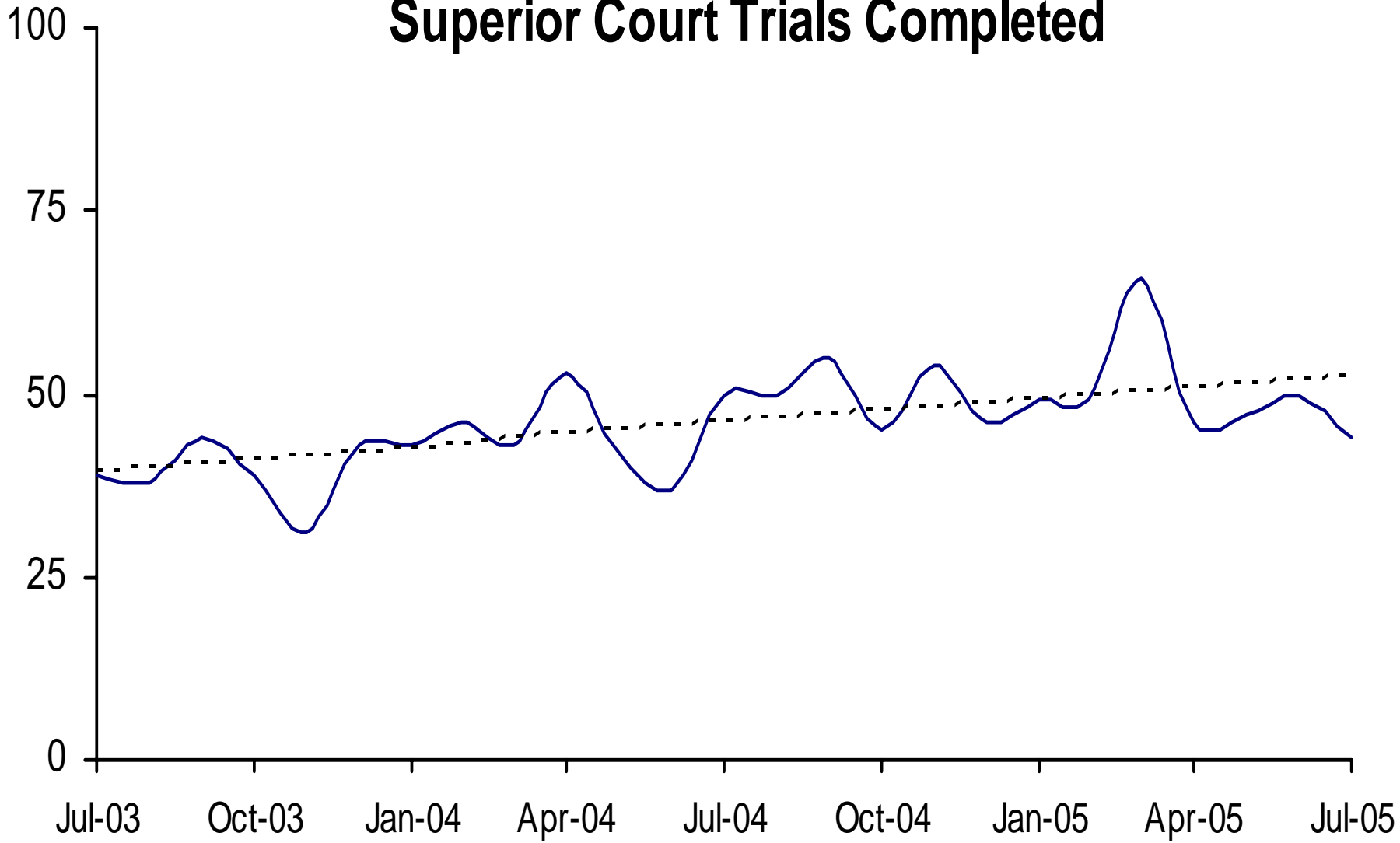
Direct Complaints into Superior Court



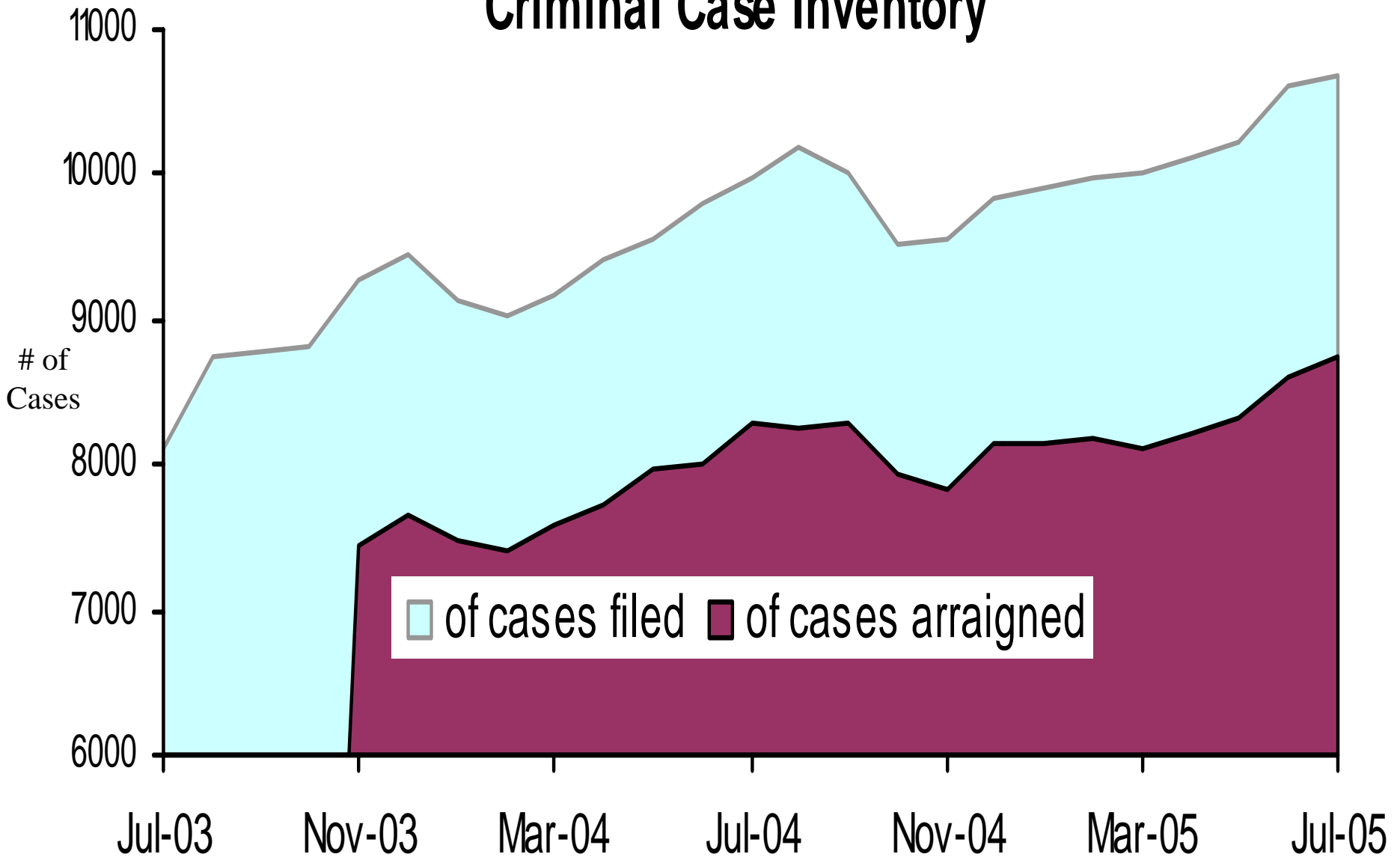
Grand Jury Indictments



Superior Court Trials Completed

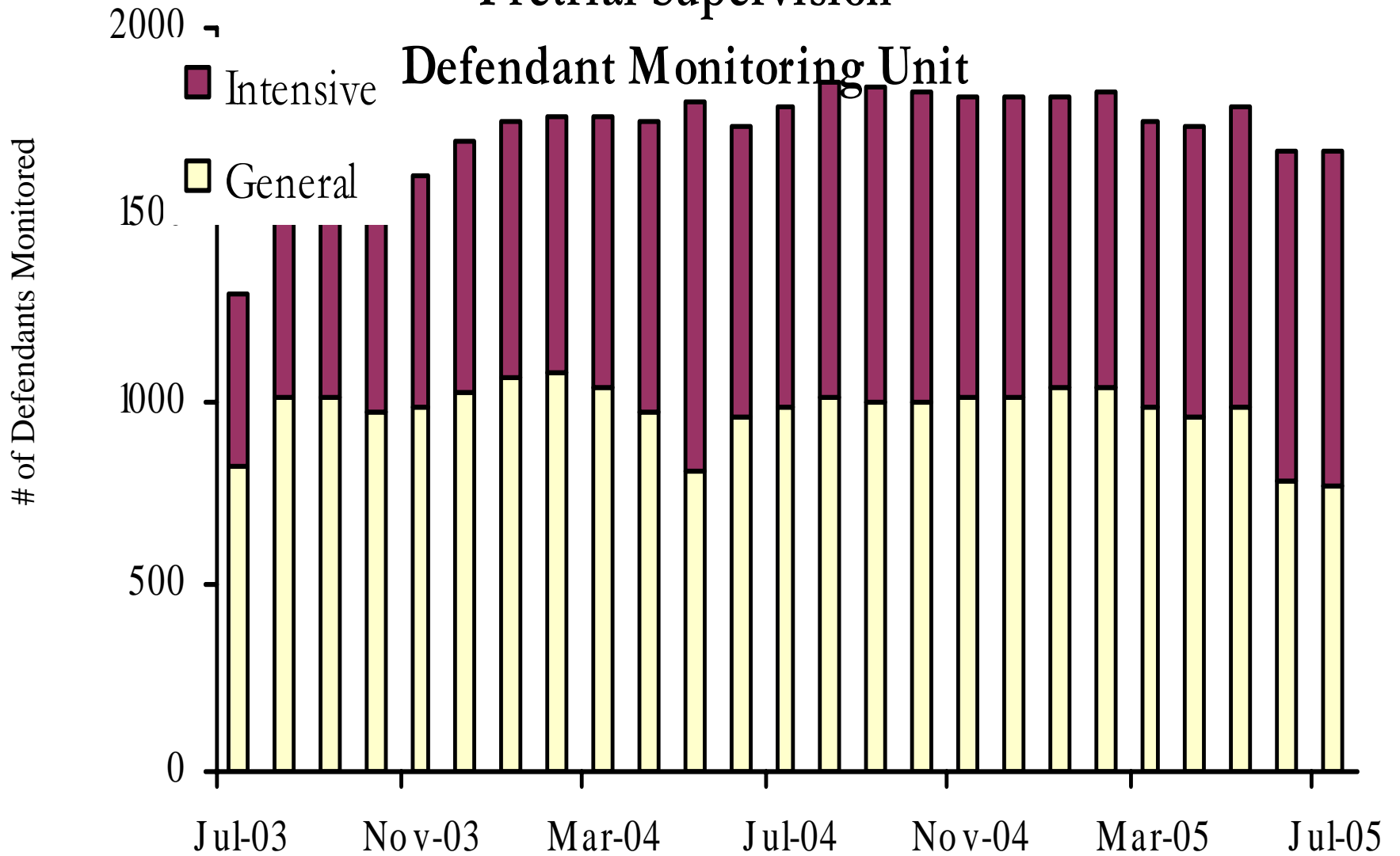


Active Pending Criminal Case Inventory

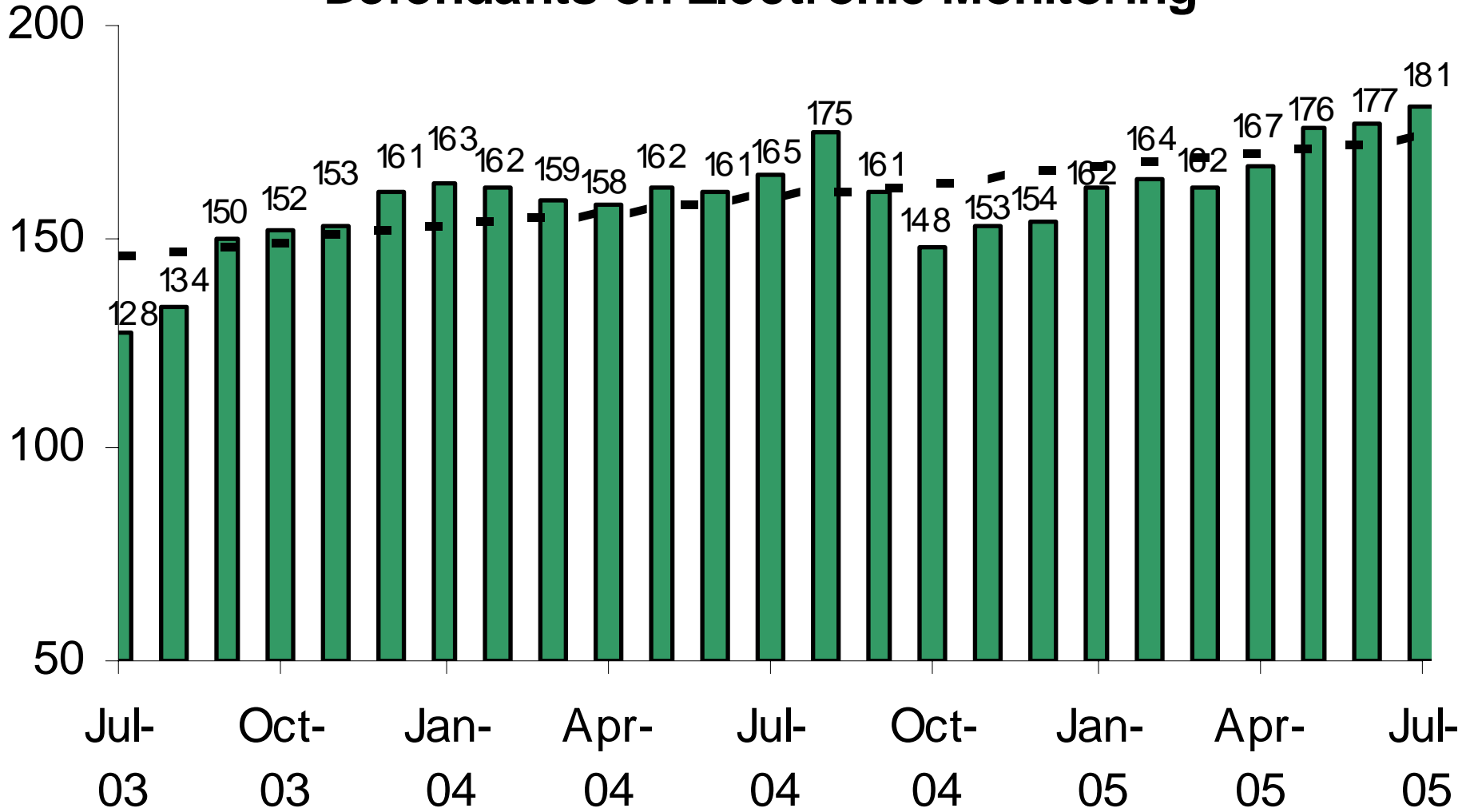


Pretrial Supervision

Defendant Monitoring Unit



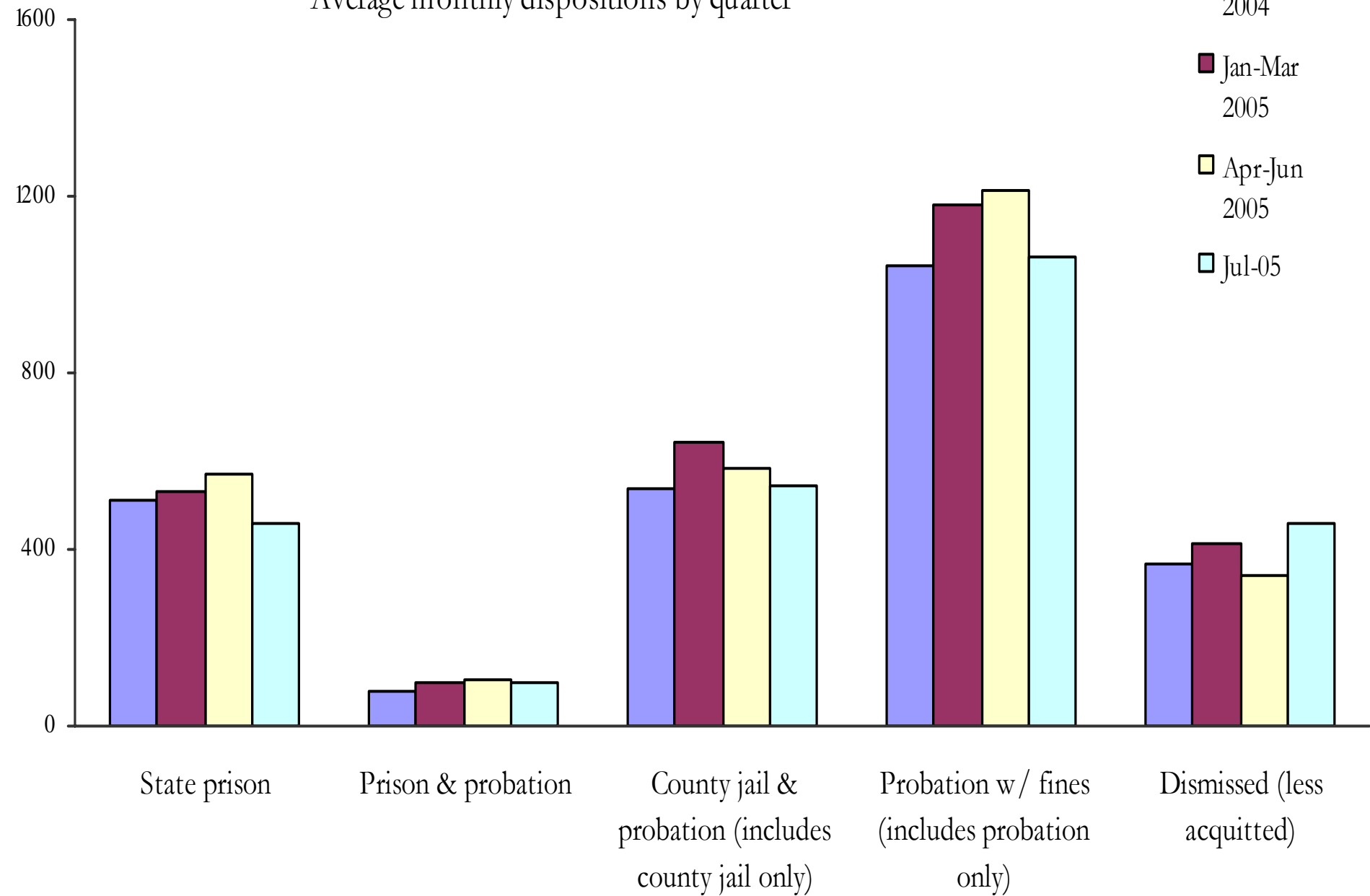
Pretrial Supervision Defendants on Electronic Monitoring



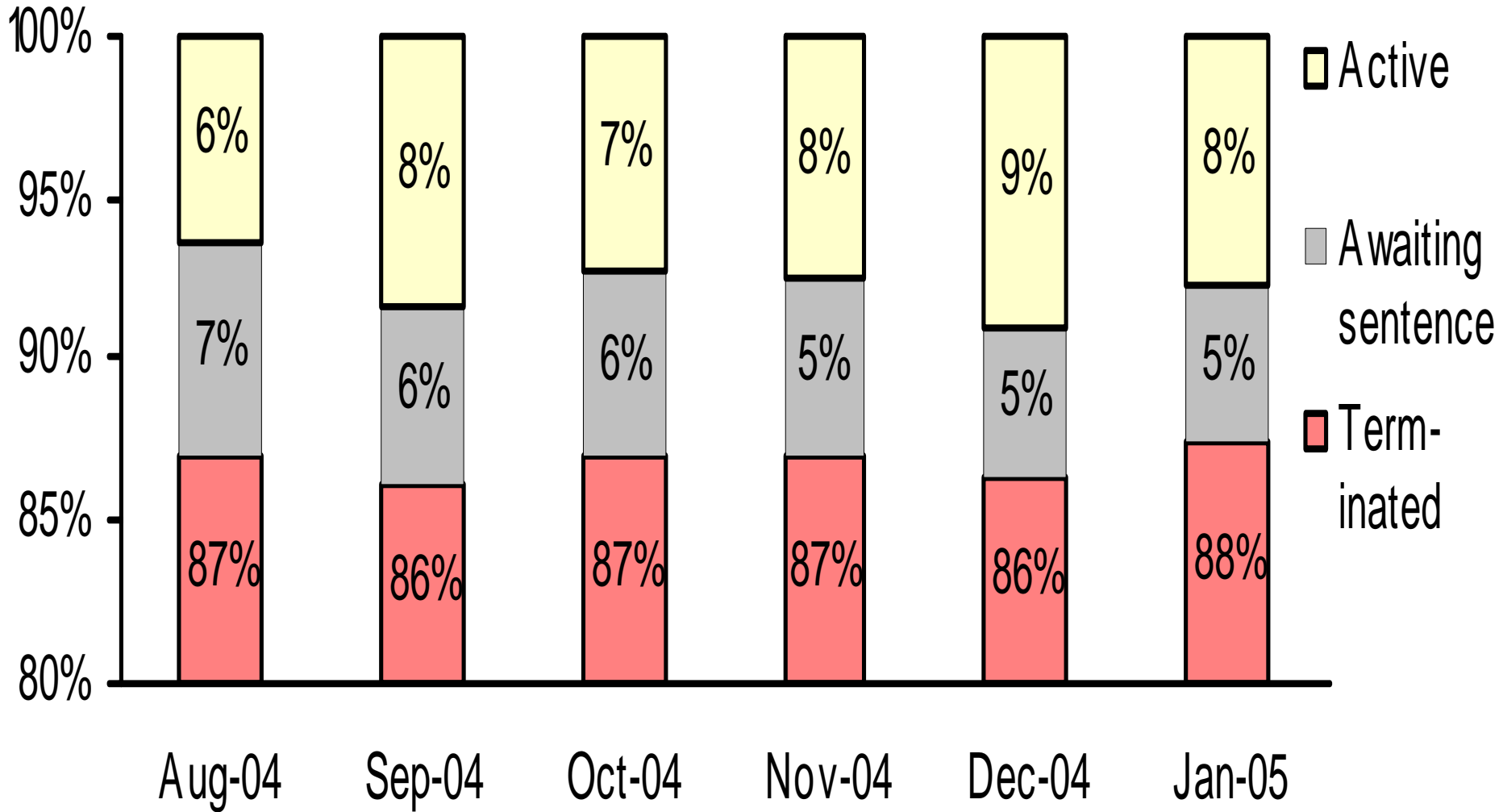
Disposition of Cases Terminated

Average monthly dispositions by quarter

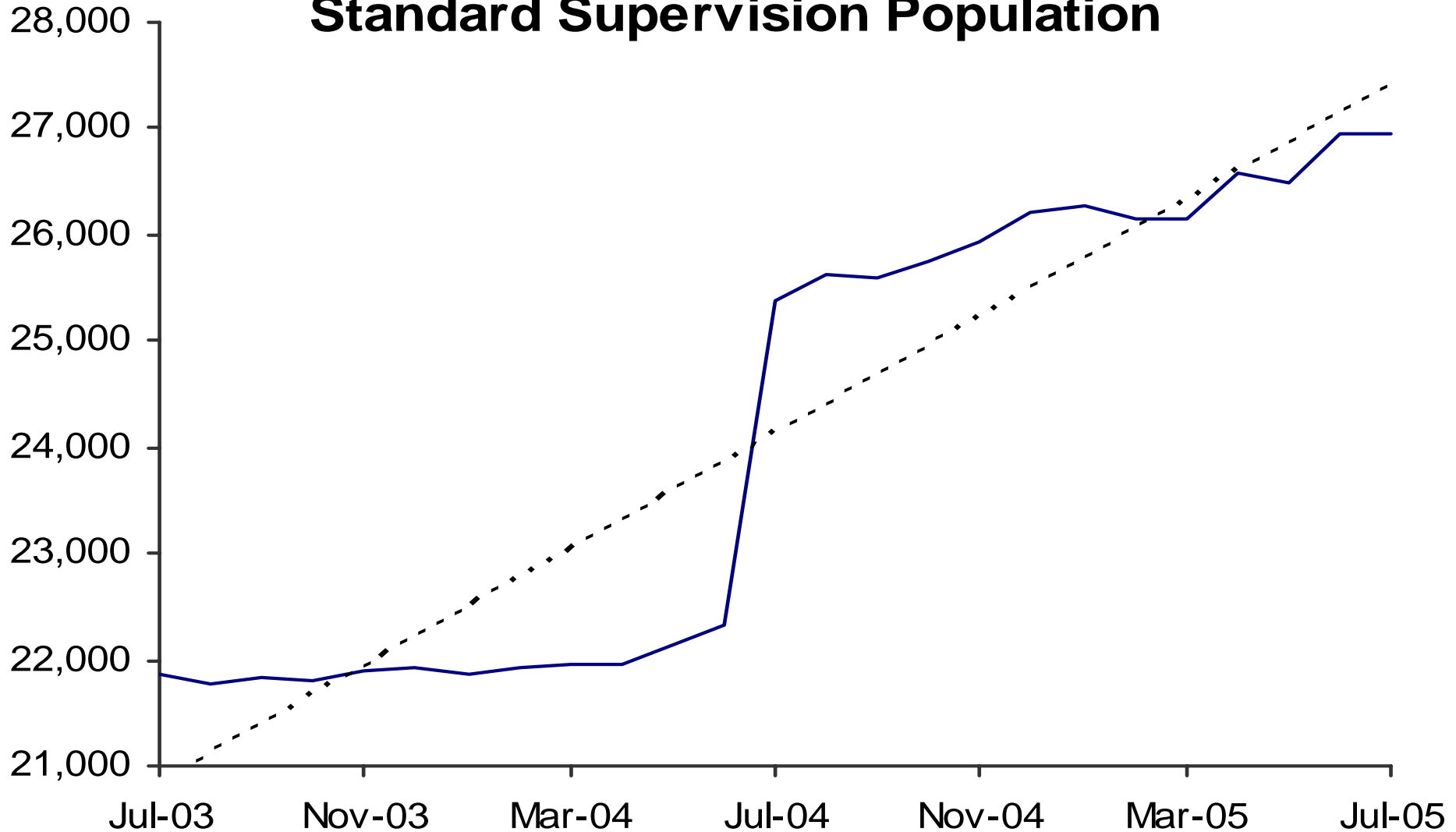
- Oct-Dec 2004
- Jan-Mar 2005
- Apr-Jun 2005
- Jul-05



Status of Cases After 180 Days

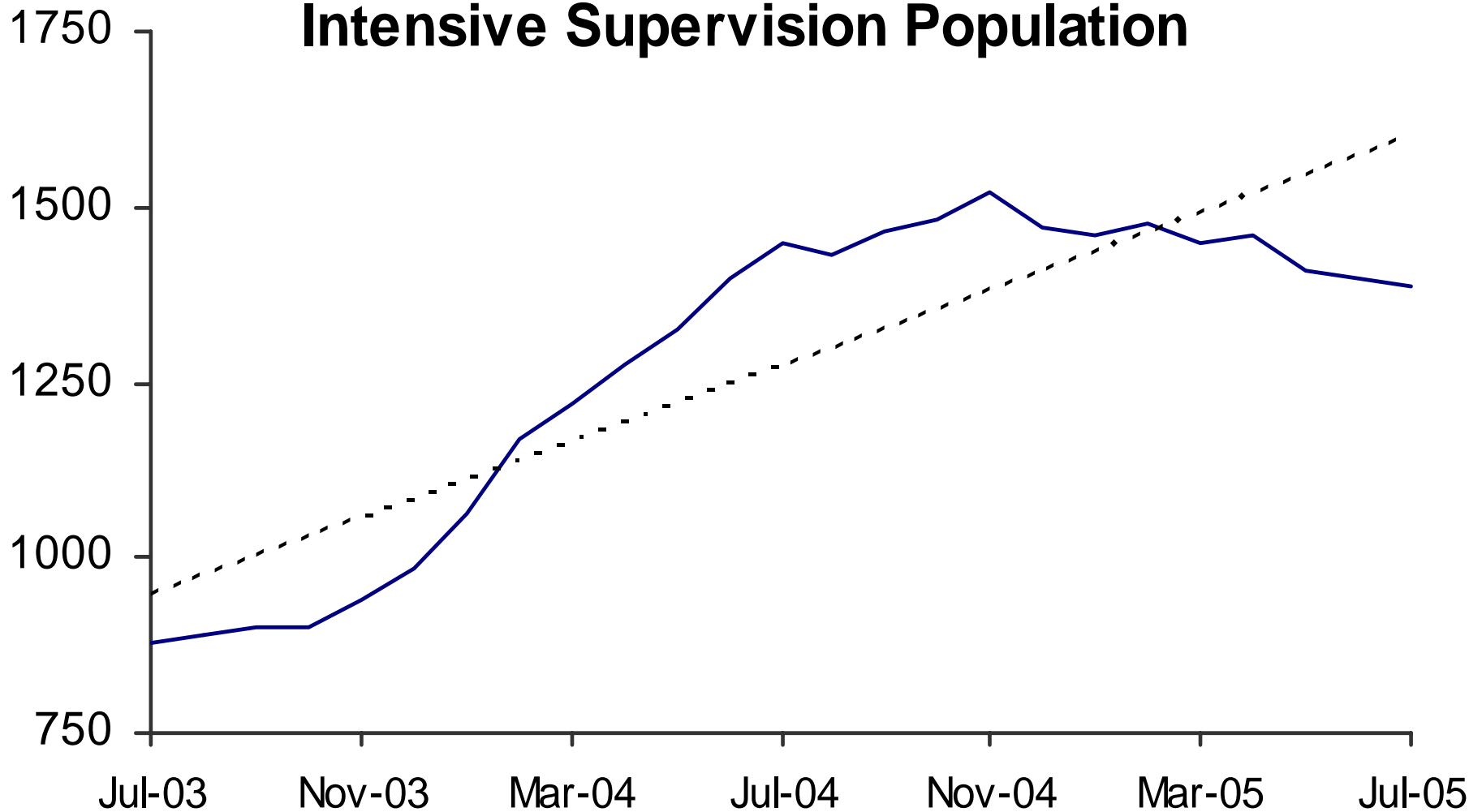


Adult Probation Standard Supervision Population

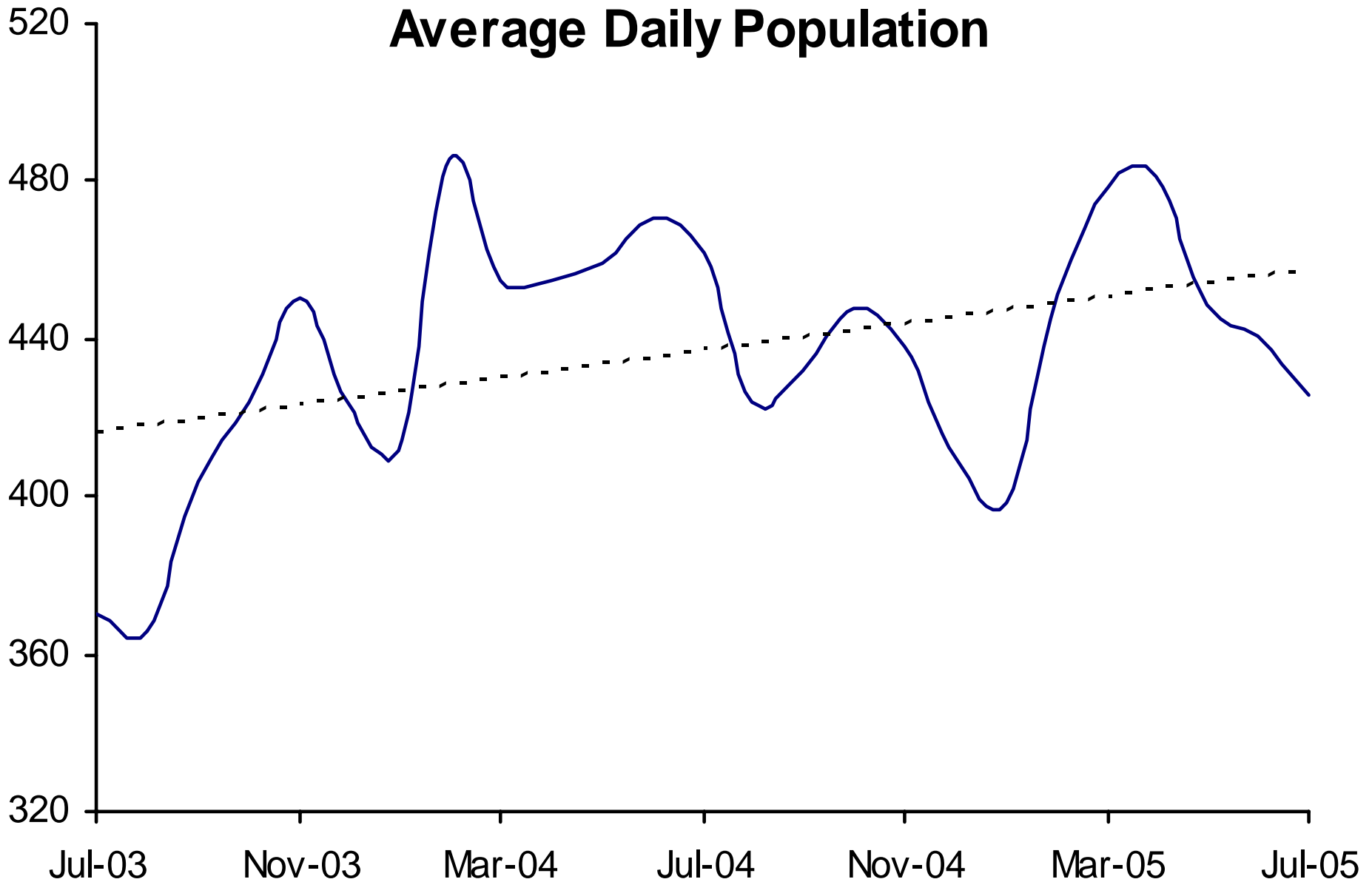


Interstate Compact and Report and Review caseloads are not included prior to July 2004. After July 2004, population as reported to the Board of Supervisors and JLBC is used.

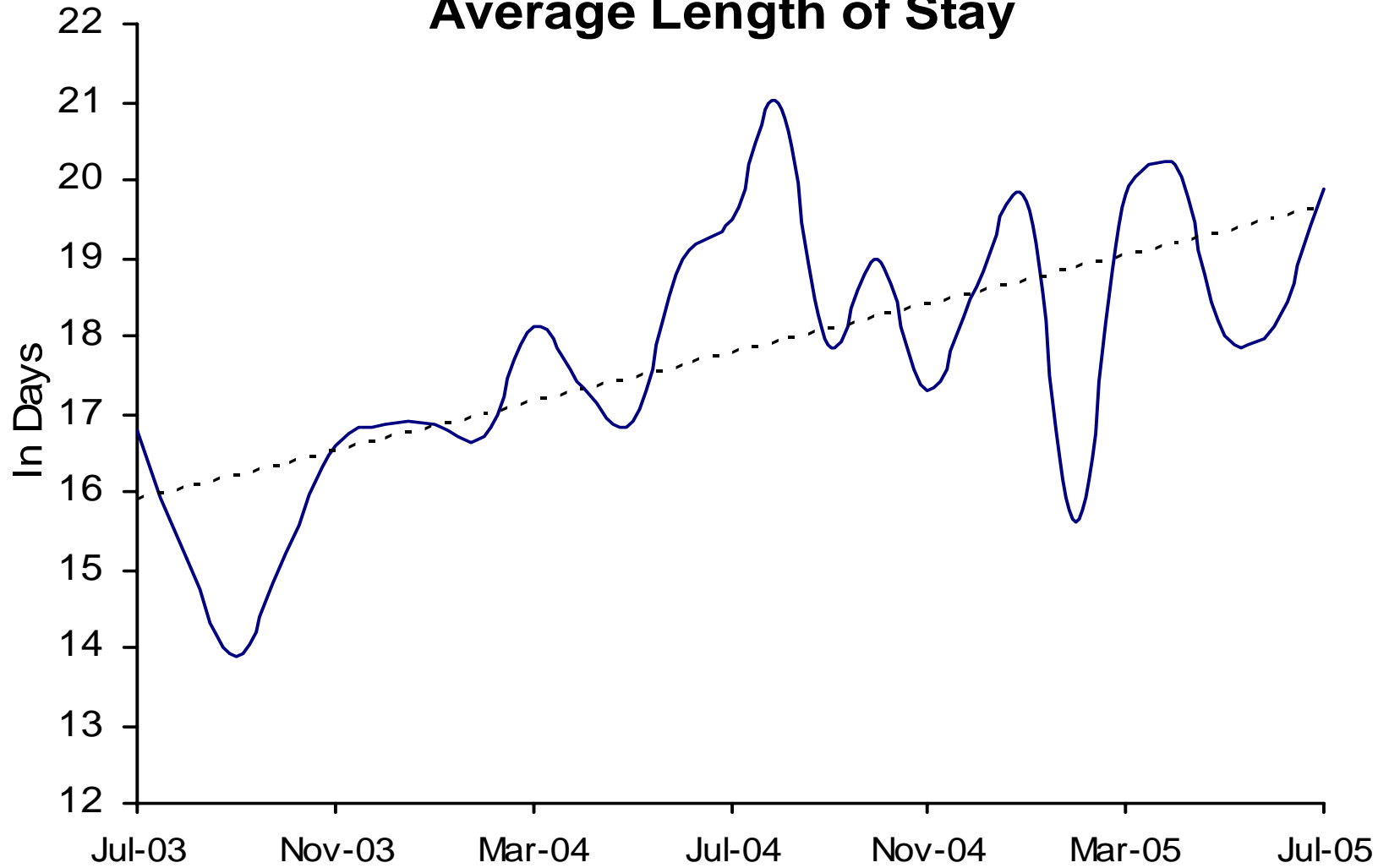
Adult Probation Intensive Supervision Population



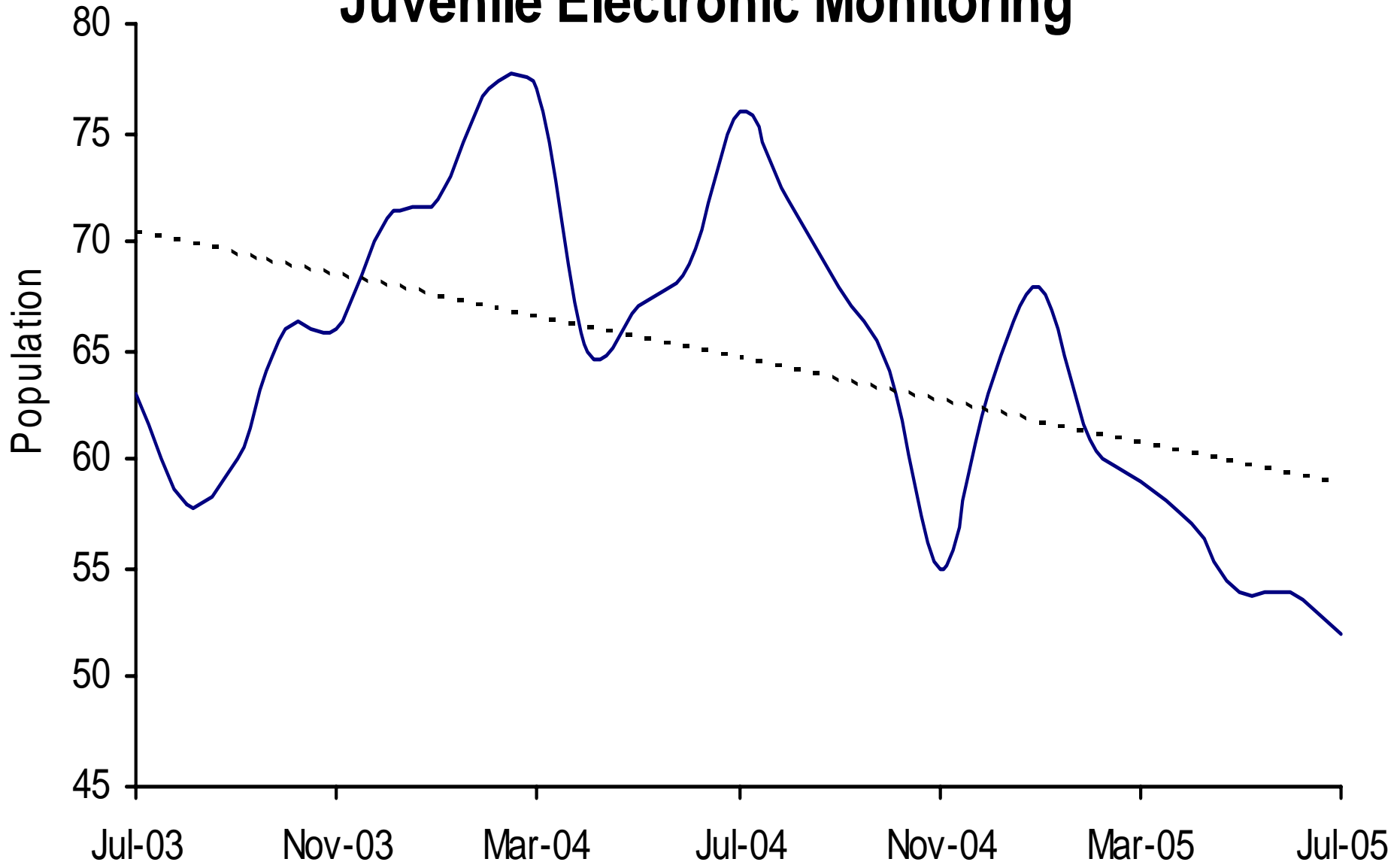
Juvenile Detention Average Daily Population



Juvenile Detention Average Length of Stay



Juvenile Electronic Monitoring



Juvenile Home Detention

