



# Maricopa County

Criminal Justice System

## Monthly Performance Report for July 2006

|   | Annual Totals |         |         |         | Year-to-Date |         |          | Current Month |        |          |
|---|---------------|---------|---------|---------|--------------|---------|----------|---------------|--------|----------|
|   | FY 2003       | FY 2004 | FY 2005 | FY 2006 | FY 2006      | FY 2007 | % Change | Jul-05        | Jul-06 | % Change |
| <b>Sheriff's Office</b>                 |               |         |         |         |              |         |          |               |        |          |
| Bookings (monthly avg)                  | 9,875         | 10,176  | 9,975   | 10,459  | 10,124       | 10,381  | 2.5%     | 10,124        | 10,381 | 2.5%     |
| Releases (monthly avg)                  | 9,857         | 10,196  | 9,934   | 10,485  | 10,075       | 10,482  | 4.0%     | 10,075        | 10,482 | 4.0%     |
| Average Daily Population                | 8,044         | 8,657   | 9,054   | 9,733   | 9,614        | 9,292   | -3.3%    | 9,614         | 9,292  | -3.3%    |
| Avg Length of Stay (in days)            | 24.4          | 26      | 27.7    | 28.4    | 29.4         | 27.8    | -5.4%    | 29.4          | 27.8   | -5.4%    |
| <b>Superior Court</b>                   |               |         |         |         |              |         |          |               |        |          |
| Filings                                 | 2,904         | 3,062   | 2,996   | 3,248   | 3,038        | 2,962   | -2.5%    | 3,038         | 2,962  | -2.5%    |
| Terminations                            | 2,330         | 2,612   | 2,758   | 2,984   | 2,636        | 2,925   | 11.0%    | 2,636         | 2,925  | 11.0%    |
| Clearance Rate                          | 80.0%         | 85.0%   | 93.0%   | 92.1%   | 86.8%        | 98.8%   | 13.8%    | 86.8%         | 98.8%  | 13.8%    |
| Active Pending Inventory                | 8,123         | 9,106   | 10,002  | 10,856  | 10,697       | 10,676  | -0.2%    | 10,697        | 10,676 | -0.2%    |
| Trials Completed                        | 59            | 42      | 51      | 68      | 44           | 62      | 40.9%    | 44            | 62     | 40.9%    |
| Trial Rate                              | 2.0%          | 1.4%    | 1.7%    | 2.1%    | 1.4%         | 2.1%    | 50.0%    | 1.4%          | 2.1%   | 50.0%    |
| <b>Adult Probation</b>                  |               |         |         |         |              |         |          |               |        |          |
| Pretrial General Supervision            | 700           | 990     | 978     | 775     | 765          | 919     | 20.1%    | 765           | 919    | 20.1%    |
| Pretrial Intensive Supervision          | 331           | 657     | 816     | 1,077   | 903          | 1,166   | 29.1%    | 903           | 1,166  | 29.1%    |
| Pretrial Electronic Monitoring          | 97            | 153     | 164     | 190     | 181          | 214     | 18.2%    | 181           | 214    | 18.2%    |
| Standard Probation Supervision          | 25,400        | 25,055  | 26,091  | 27,896  | 26,955       | 29,476  | 9.4%     | 26,955        | 29,476 | 9.4%     |
| Intensive Probation Supervision         | 1,267         | 1,078   | 1,456   | 1,321   | 1,388        | 1,315   | -5.3%    | 1,388         | 1,315  | -5.3%    |
| <b>Juvenile Detention and Probation</b> |               |         |         |         |              |         |          |               |        |          |
| Avg Daily Detention Pop                 | 401           | 431     | 443     | 433     | 426          | 427     | 0.2%     | 426           | 427    | 0.2%     |
| Avg Length of Stay (in days)            | 15.1          | 16.6    | 18.7    | 18.5    | 19.9         | 17.2    | -13.6%   | 19.9          | 17.2   | -13.6%   |
| Standard Prob.                          | 4,387         | 4,232   | 4,108   | 4,055   | 4,034        | 4,179   | 3.6%     | 4,034         | 4,179  | 3.6%     |
| Intensive Prob.                         | 659           | 518     | 547     | 527     | 546          | 528     | -3.3%    | 546           | 528    | -3.3%    |



# Maricopa County

## Criminal Justice System

### *CRIMINAL JUSTICE SYSTEM NEWS – JULY 2006*

#### Adult Incarceration

**Bookings decreased** from June's 10,755 to July's 10,381. This is the lowest number since February 2006 (9,755). **ADP also decreased**, from 9,419 to 9,292. This is the lowest population since April 2005 (9,143). **Pretrial and agency hold populations were down:** pretrial 6,144 to 6,064 and holds 422 to 383. The holds population was the lowest since July 2001 (289). **The sentenced population was virtually unchanged.**

**Overall ALOS increased 1.5 days**, from 26.3 to 27.8 days. **The only ALOS measurement to decrease in July was for agency holds**, from 75.8 days to 67.9 days (lowest since August 2004 – 67.7 days). Pretrial ALOS increased from 6.4 to 8.0 days and sentenced from 28.8 to 30.9 days. Breaking down the pretrial population, felony ALOS increased from 9.4 days to 12.5 days, while misdemeanor ALOS went from 3.1 days to 3.5 days.

#### Filings & Case Processing

**Criminal filings and terminations decreased** in July, filings from 3,576 to 2,962 and terminations from 3,072 to 2,925, resulting in a termination rate of 98.8%. **The active pending case inventory decreased** from 10,774 to 10,676. **July filings into the RCC and EDC decreased.** The 1,656 RCC filings were the fewest since October 2005 (1,610). **62 trials were completed in July**, compared to 55 in June. **The July trial rate was 2.1%.**

#### Adult Probation

**All levels of pretrial supervision increased** from June to July: general from 816 to 919; intensive from 1,089 to 1,166; electronic from 206 to 214.

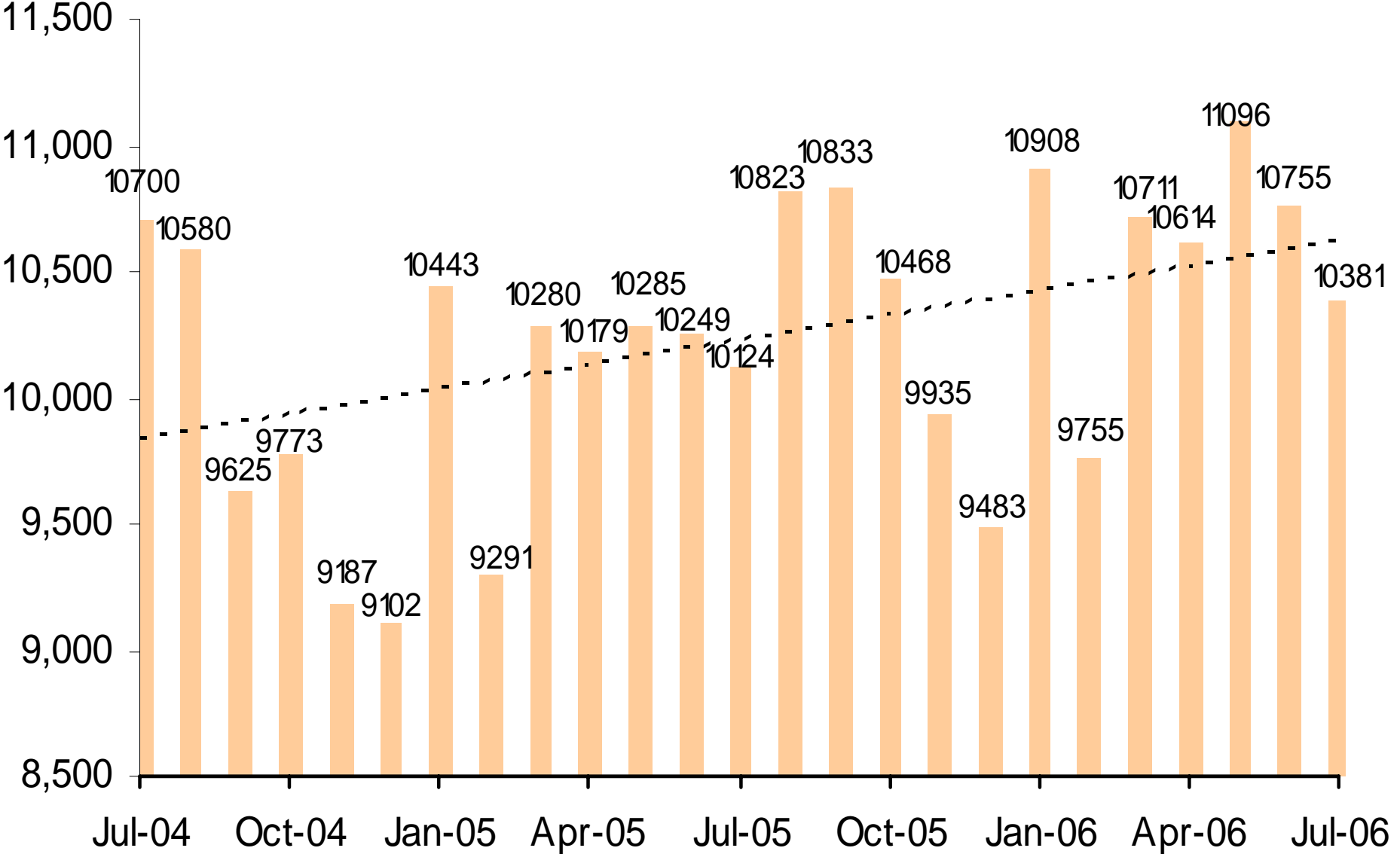
**Levels of standard and intensive probation supervision increased slightly** from June to July: standard from 29,323 to 29,474 and intensive from 1,308 to 1,315. Standard supervision numbers continue to be the highest they have ever been.

#### Juvenile Detention and Probation

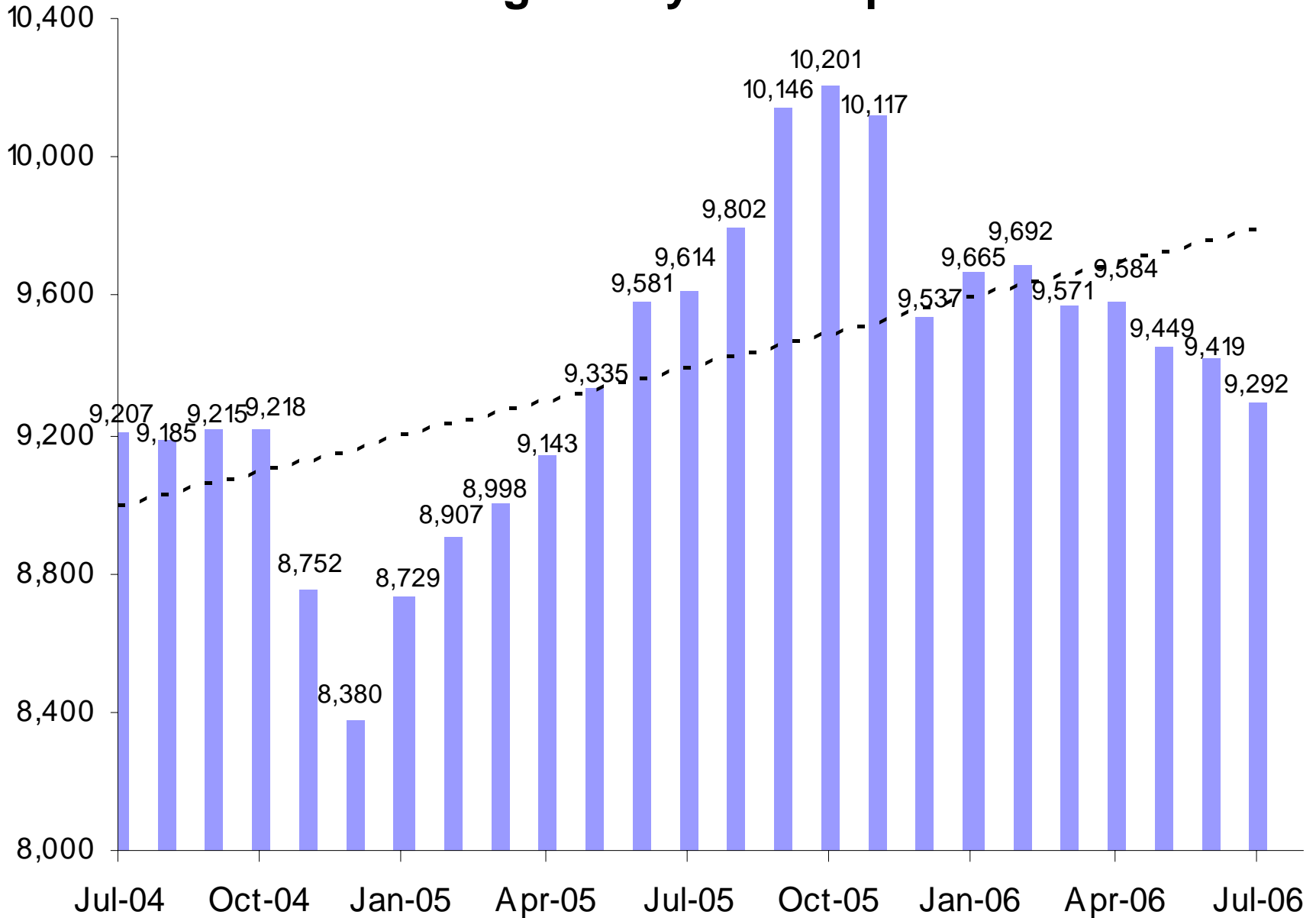
The **Average Daily Detention Population decreased** from 431 in June to 427 in July. **ALOS decreased** from 20.7 to 17.2 days. A revision was made to the electronic monitoring (EM) counts, back to October 2005. Juvenile Intensive Probationers on EM are now included along with Standard Probationers. The July EM number was 144. **Home detention decreased** from 257 to 239.

**Levels of juvenile standard and intensive probation decreased slightly.** Standard went from 4,230 to 4,179, while intensive went from 530 to 528.

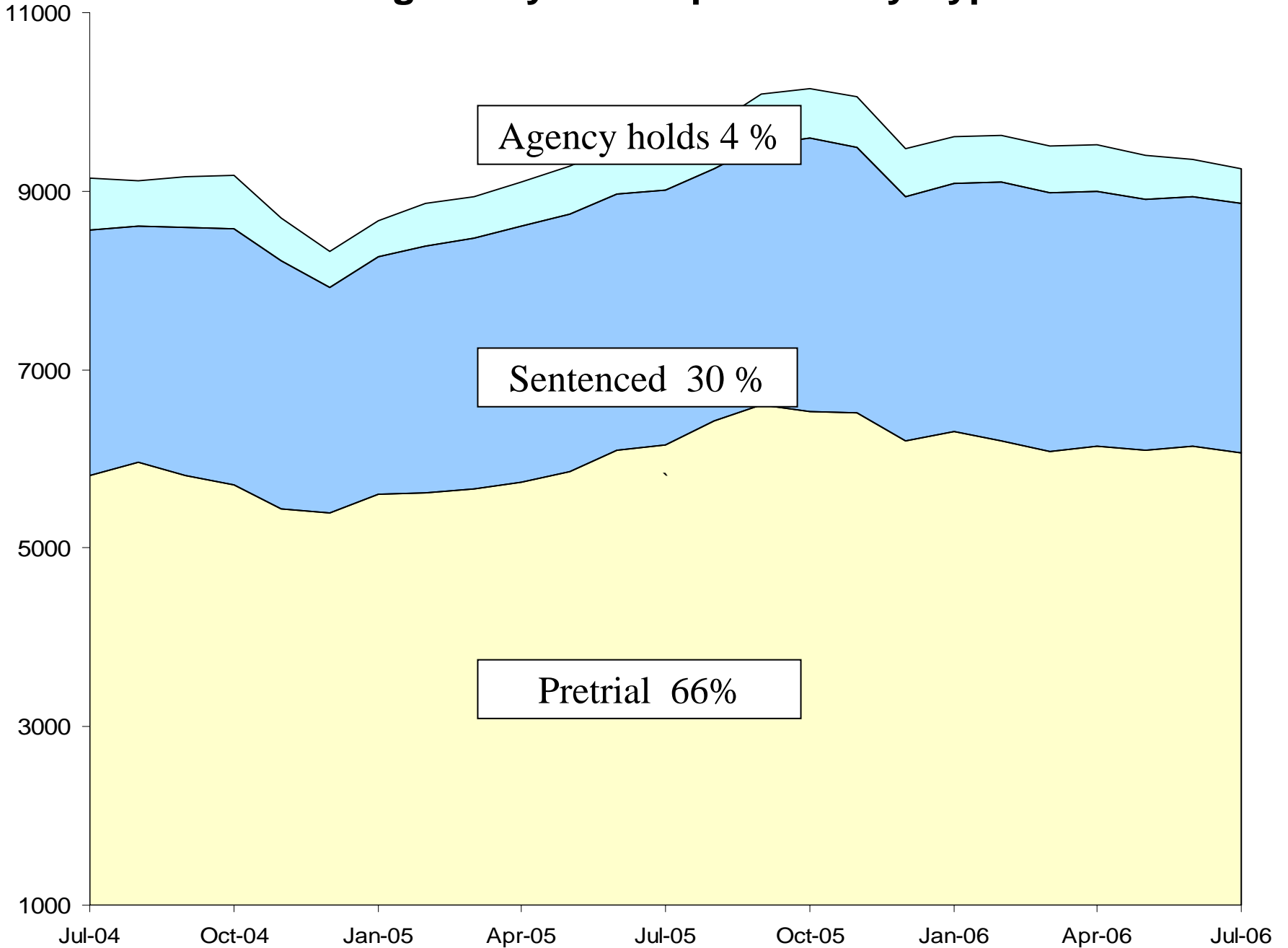
# Jail Bookings



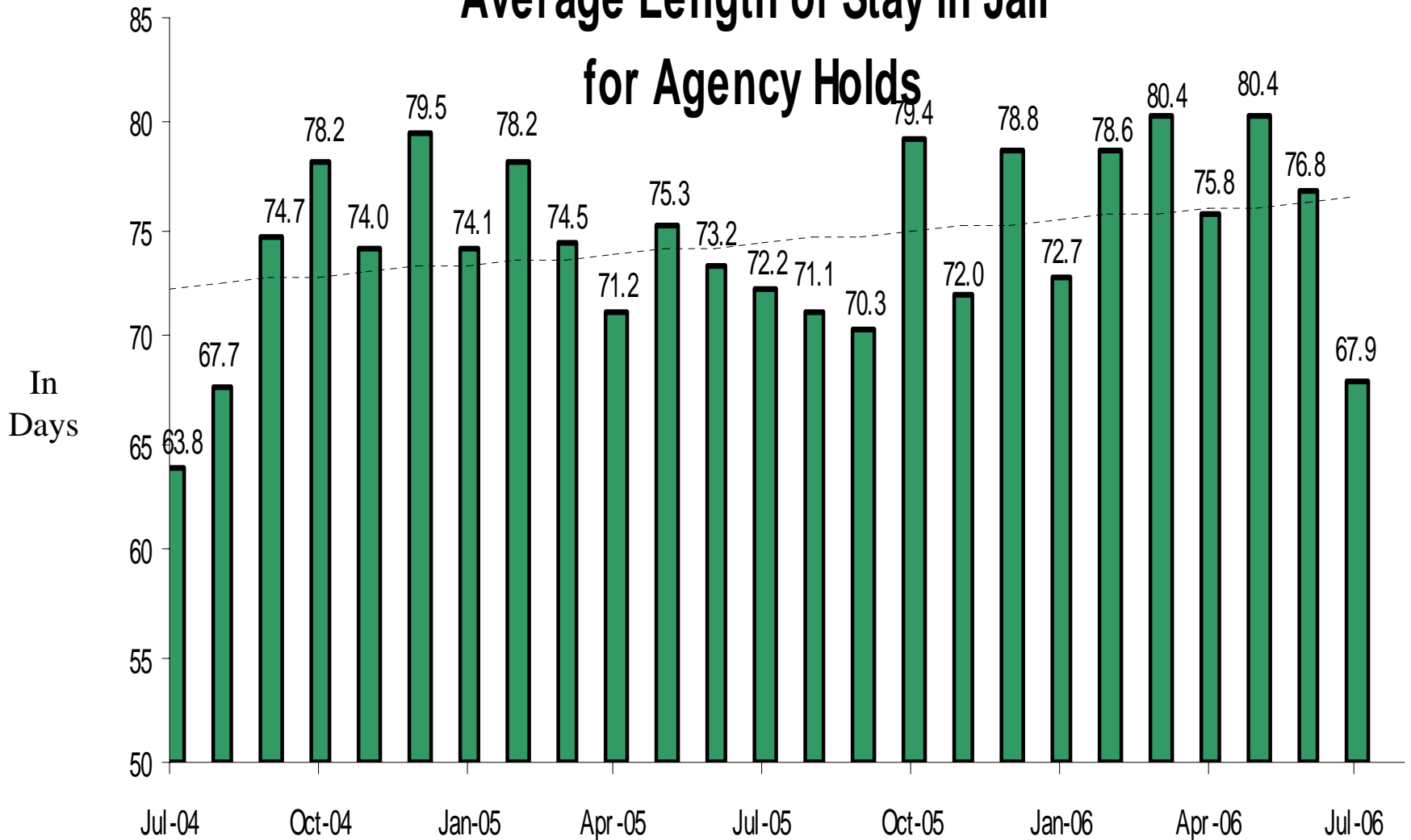
# Average Daily Jail Population



# Average Daily Jail Population by Type

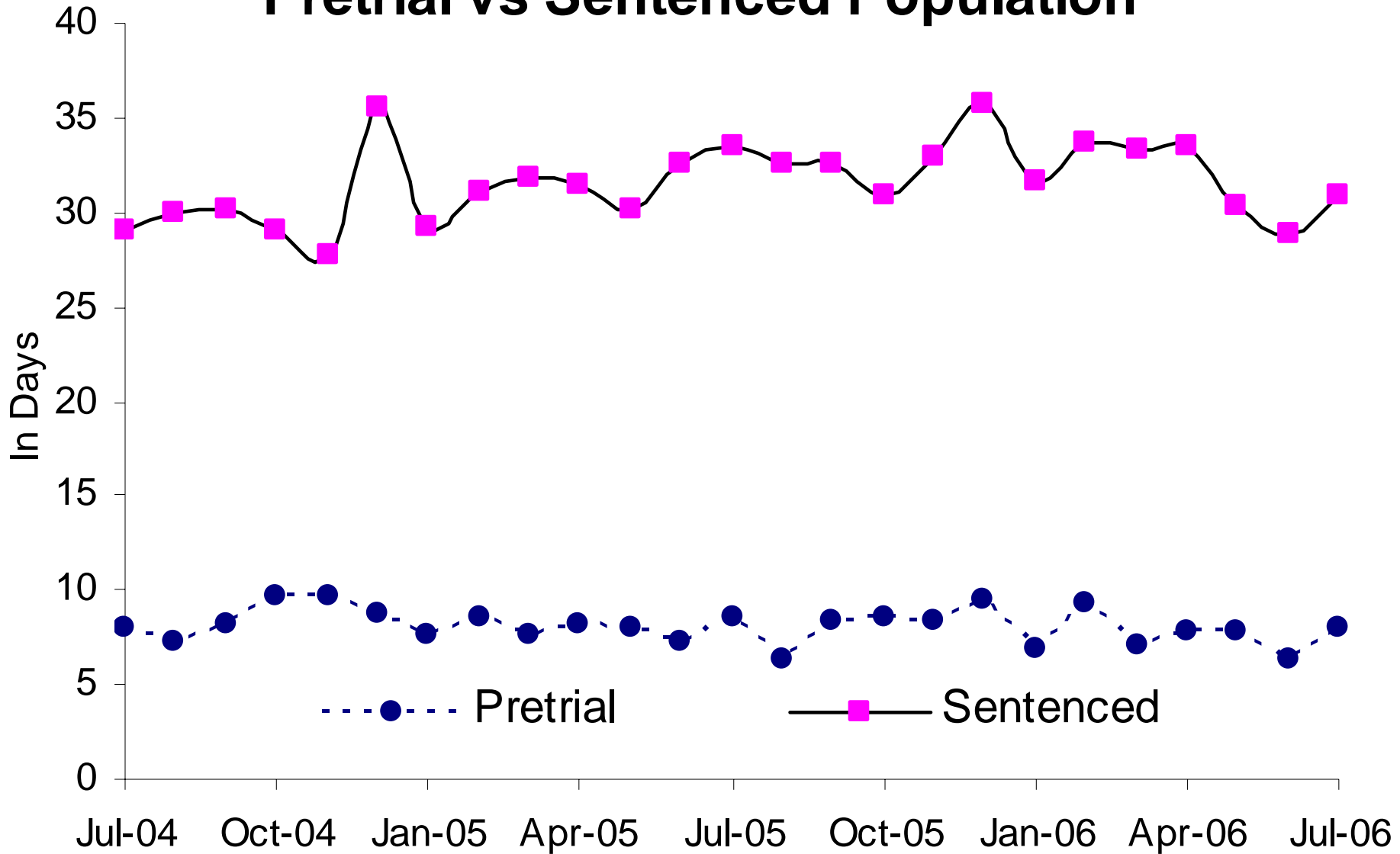


# Average Length of Stay in Jail for Agency Holds

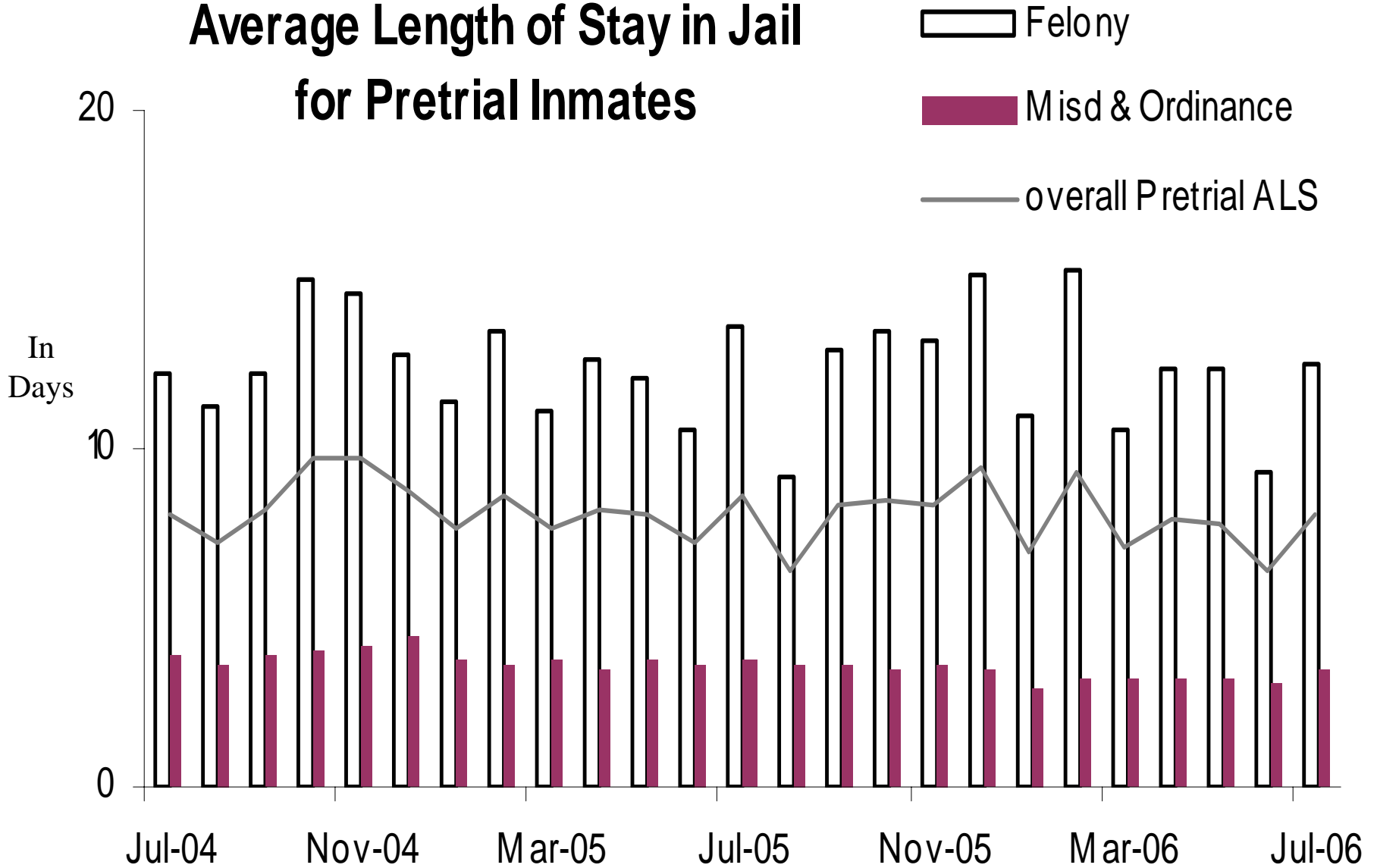


70% Dept of Corrections, 14% Federal agencies, 16% other

# Average Length of Stay in Jail Pretrial vs Sentenced Population

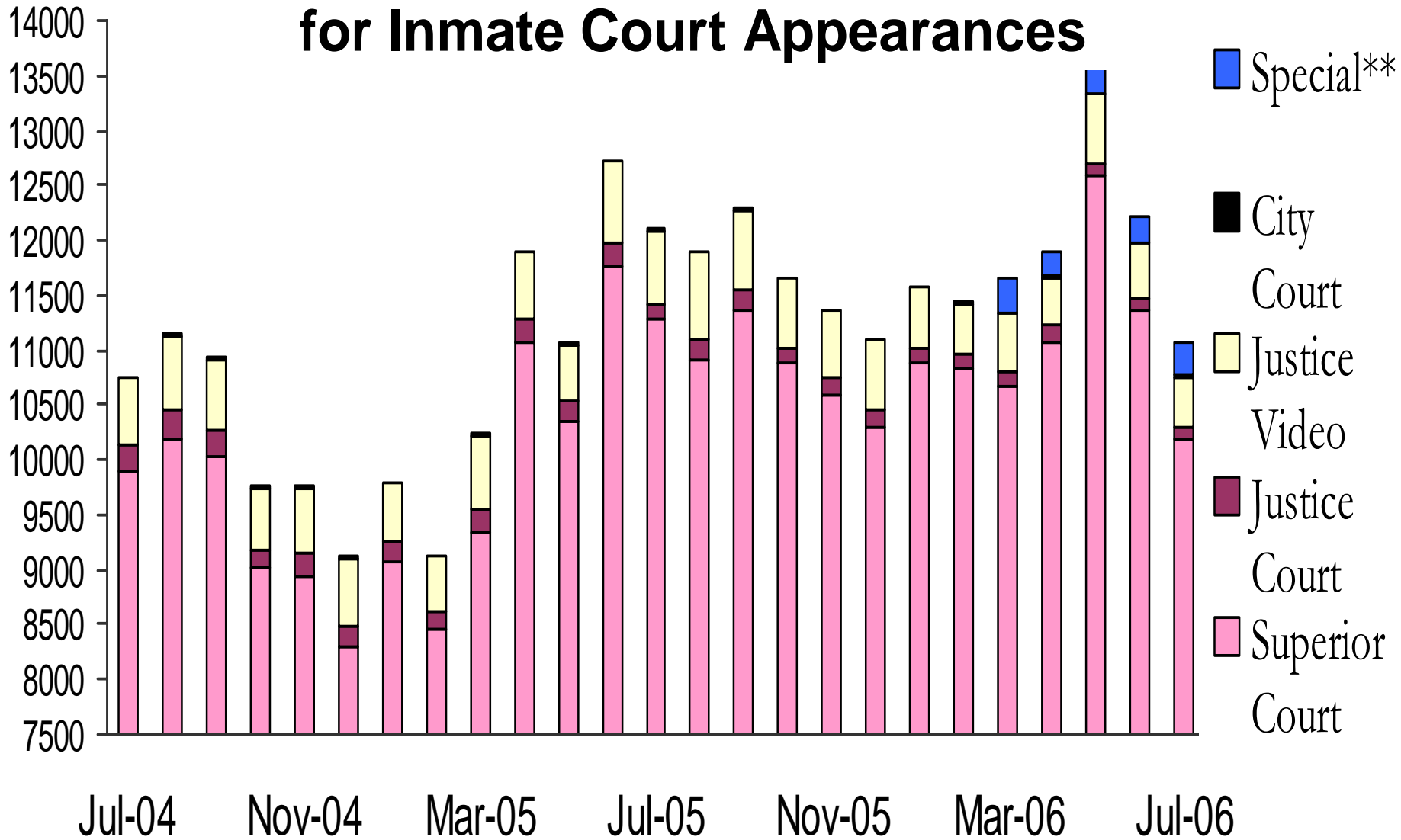


# Average Length of Stay in Jail for Pretrial Inmates





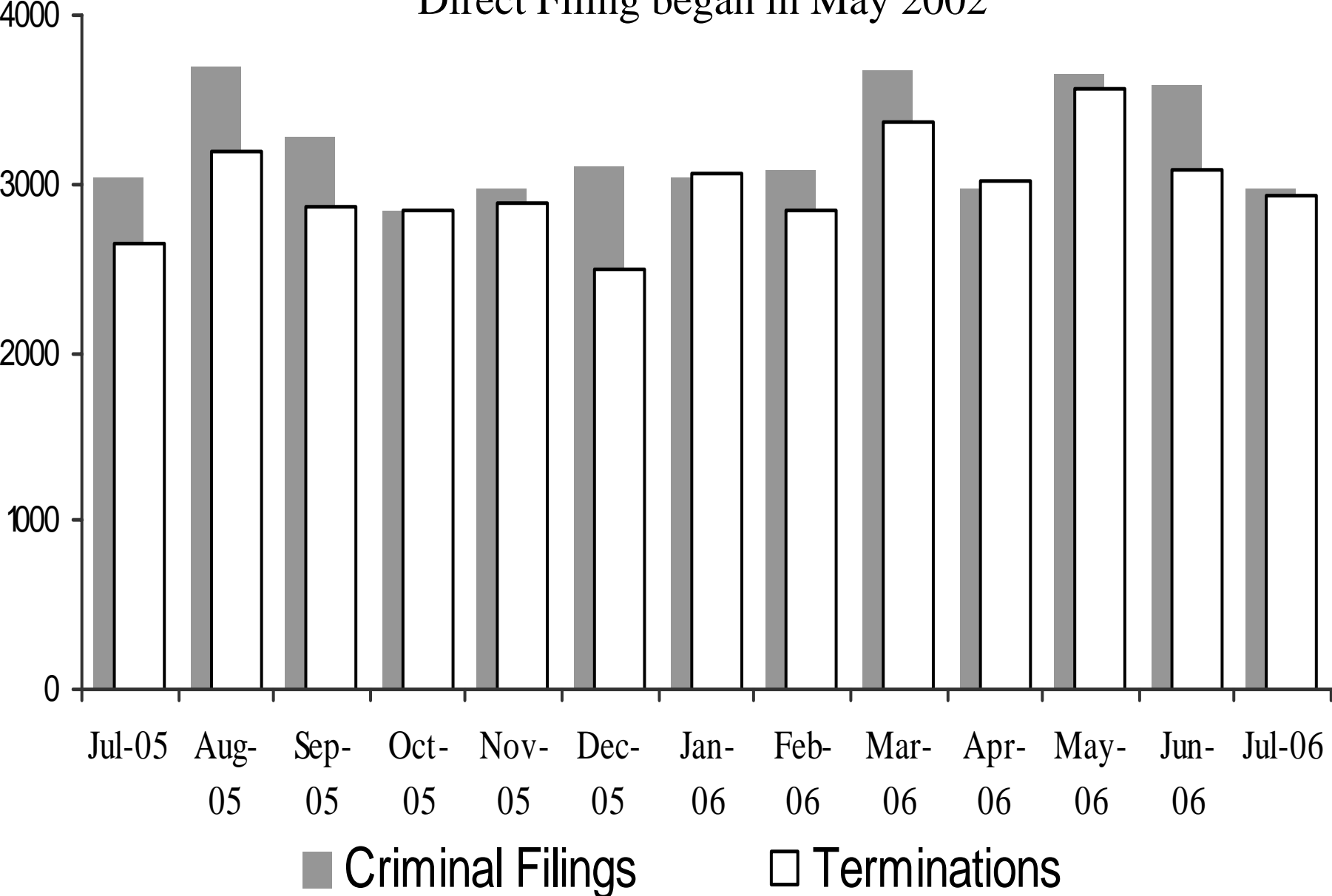
# Sheriff's Office Transports for Inmate Court Appearances



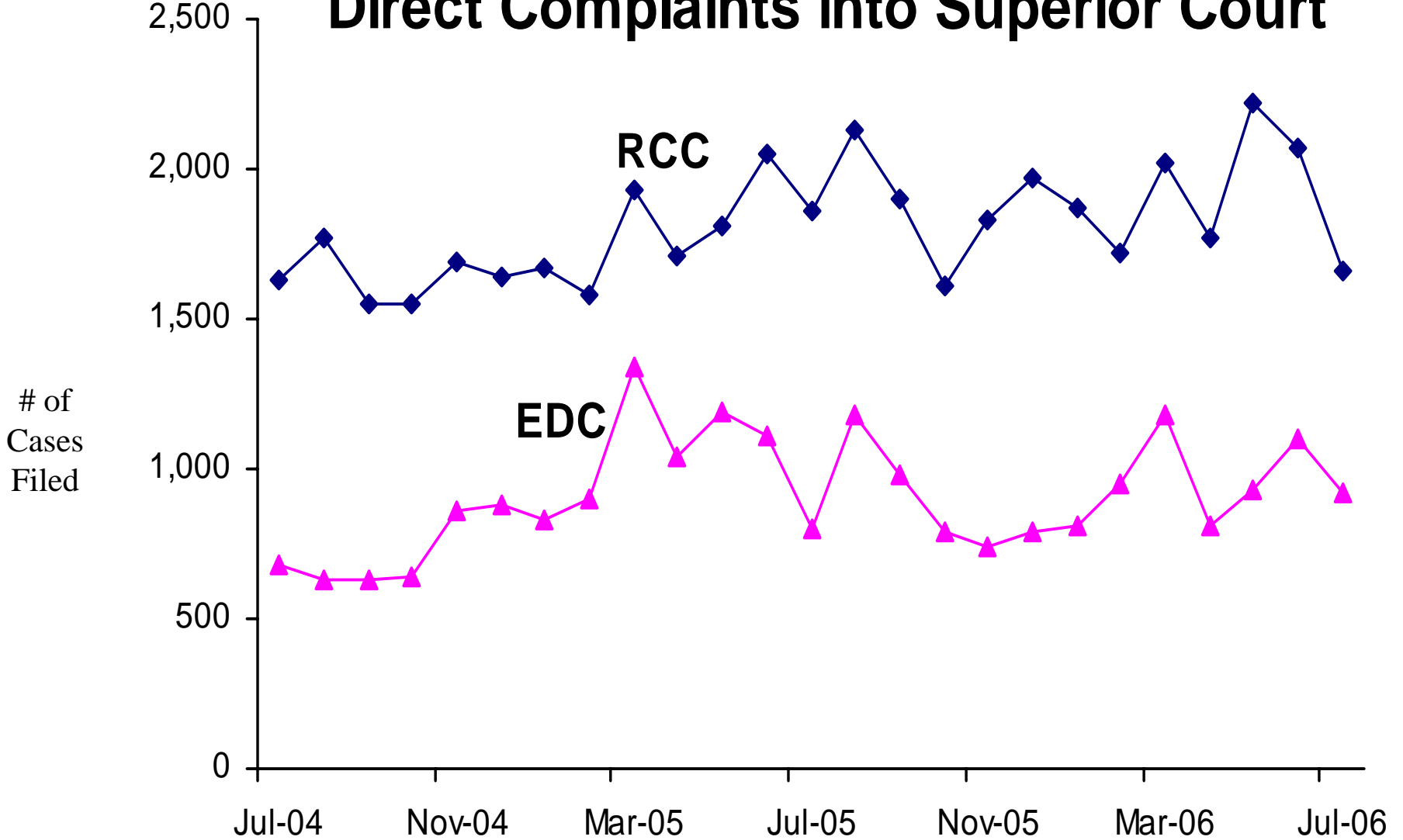
“Special” cases added in March 2006 include Downtown Remands, SEJD Remands, and SEJD Unscheduled.

# Superior Court Filings and Terminations

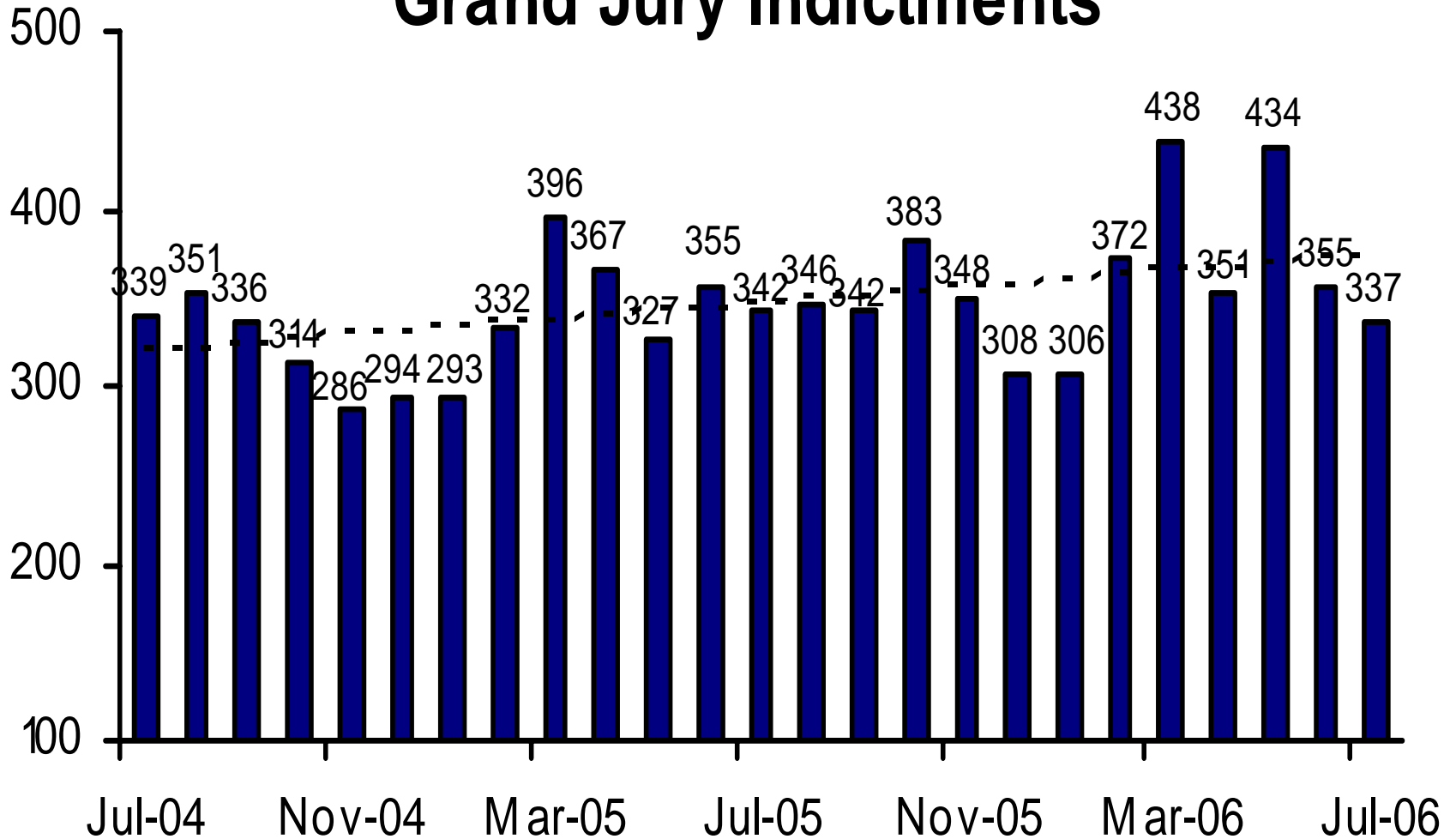
Direct Filing began in May 2002



# Direct Complaints into Superior Court

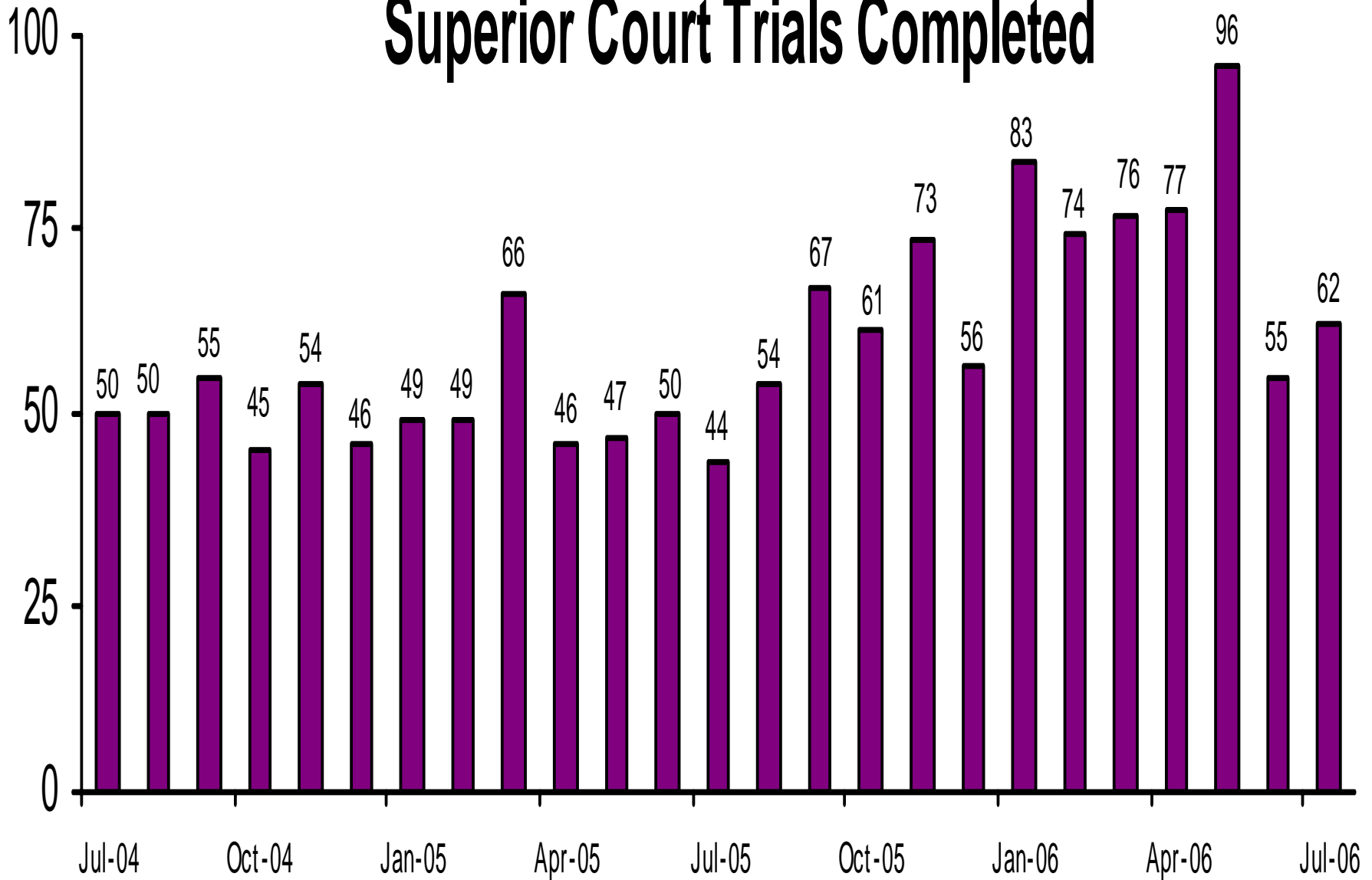


# Grand Jury Indictments

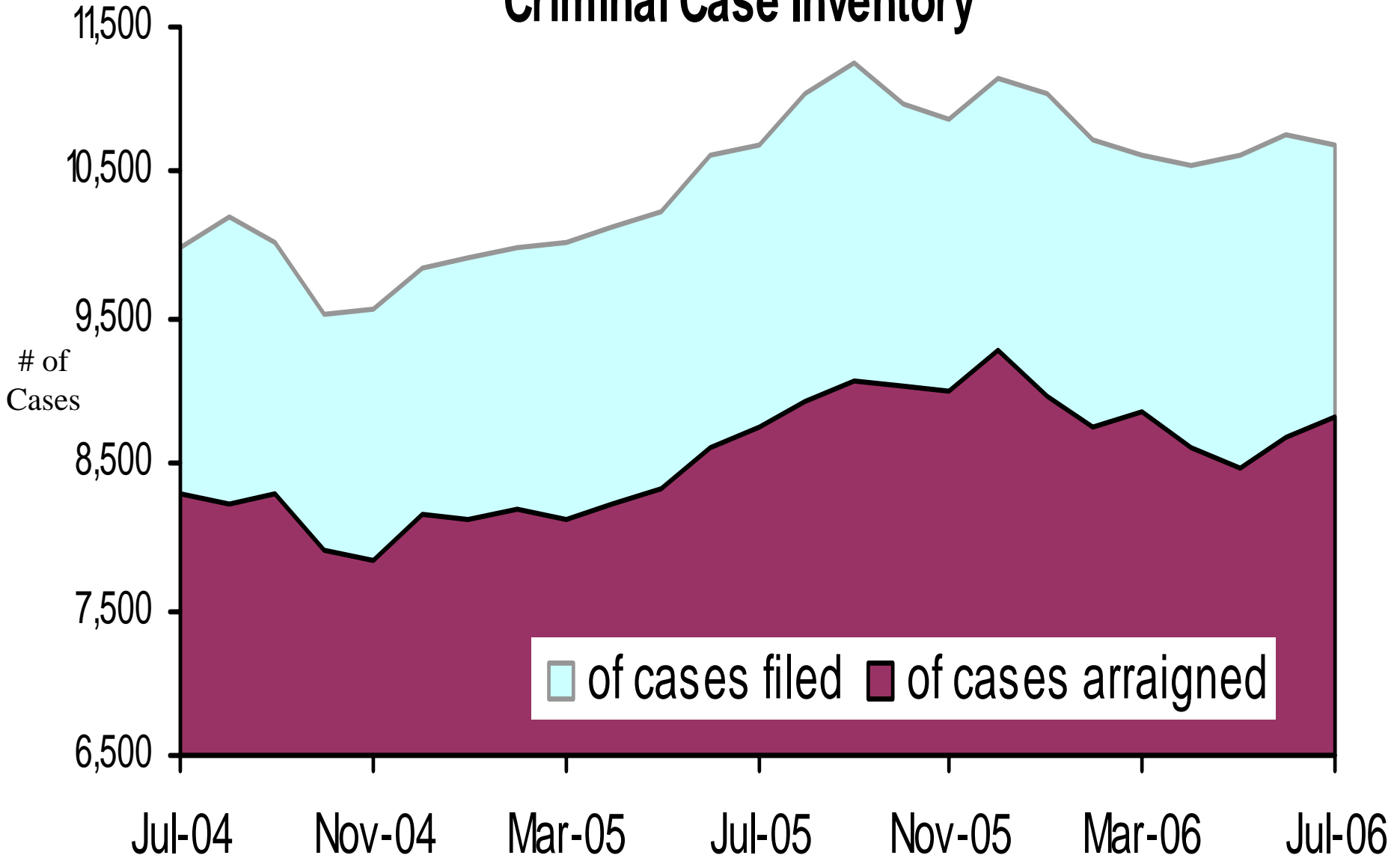


These numbers do not include notices of supervening indictments, non-EDC direct complaints, and juvenile direct complaints.

# Superior Court Trials Completed

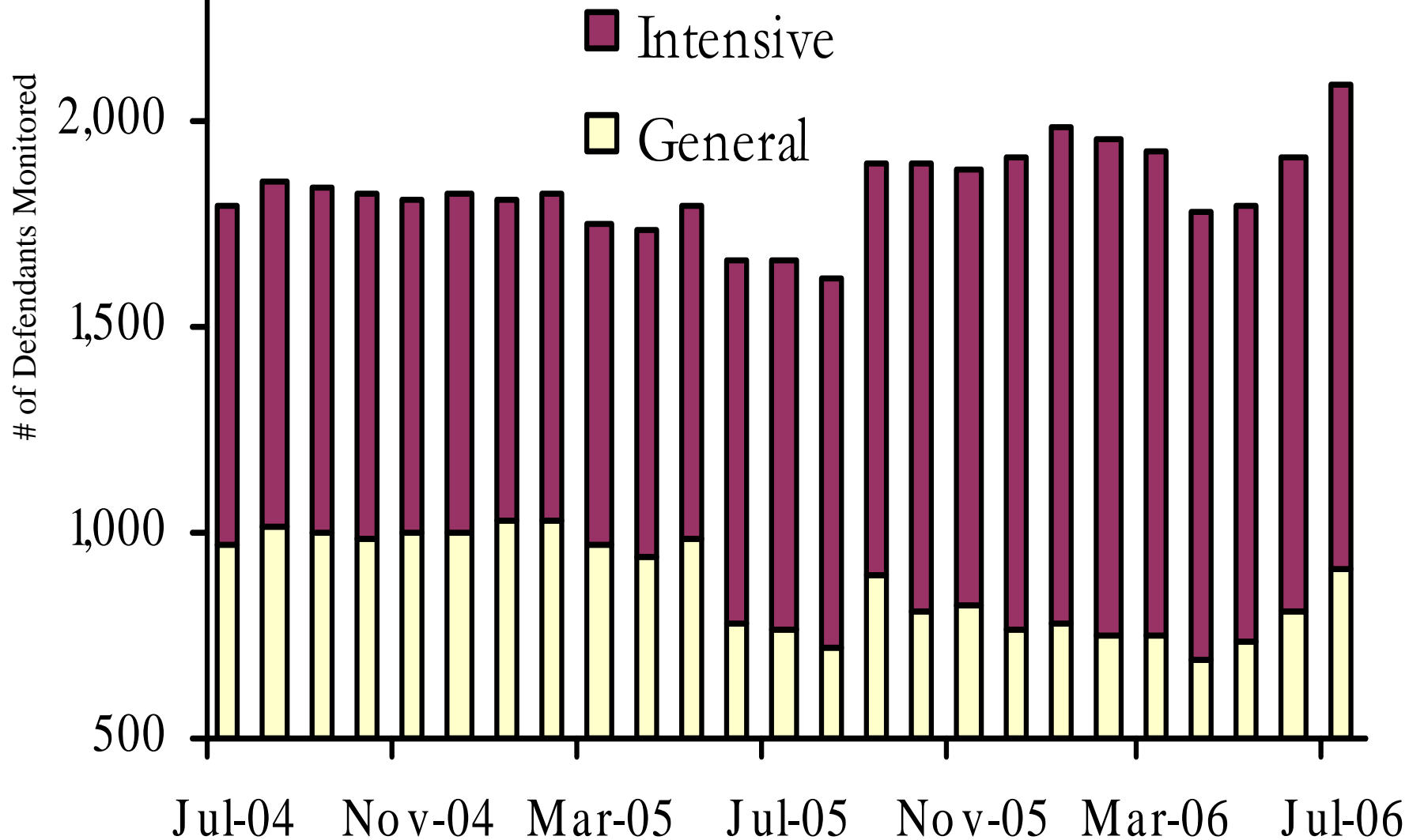


# Active Pending Criminal Case Inventory

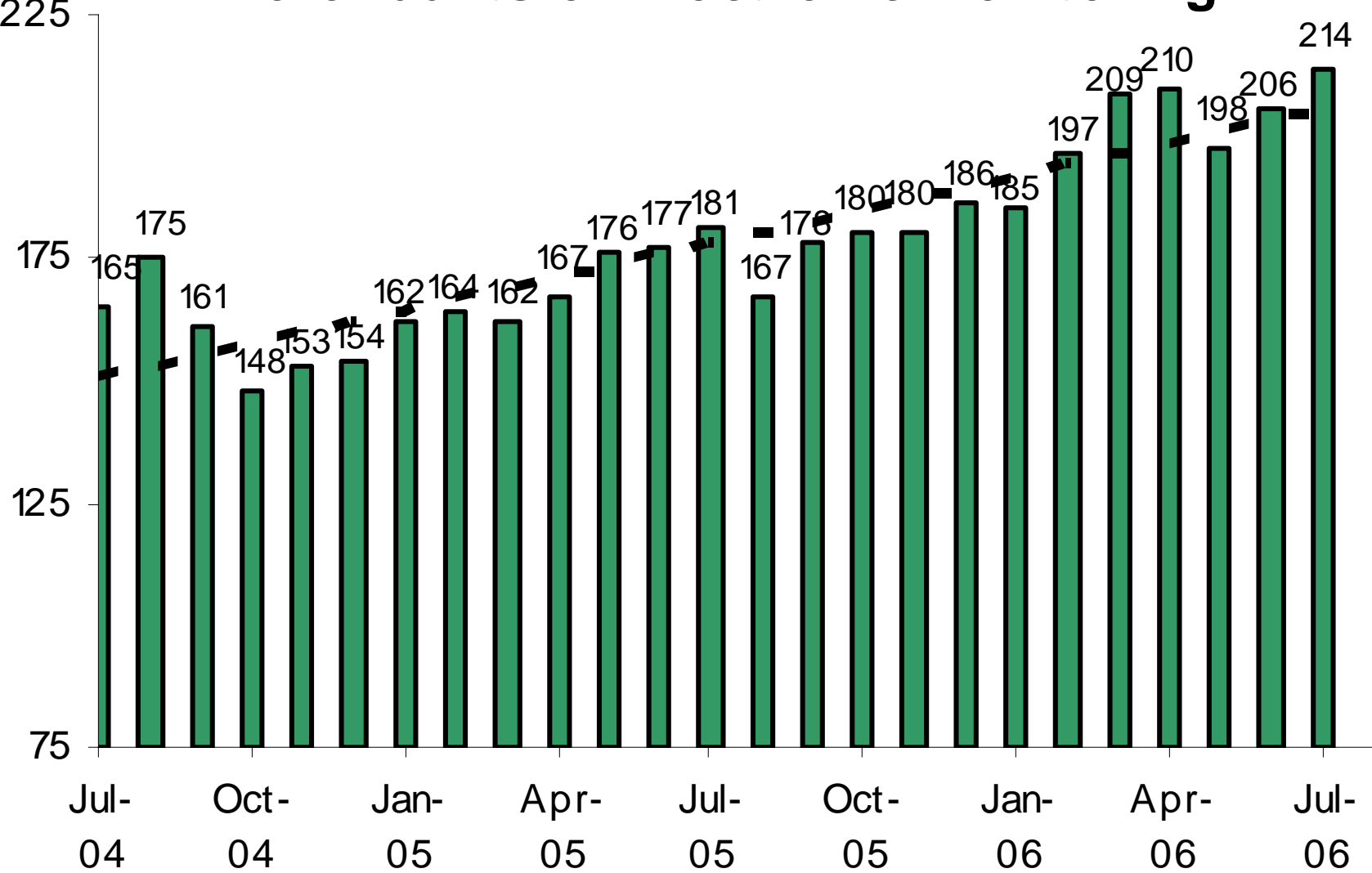


# Pretrial Supervision

## Defendant Monitoring Unit



# Pretrial Supervision Defendants on Electronic Monitoring

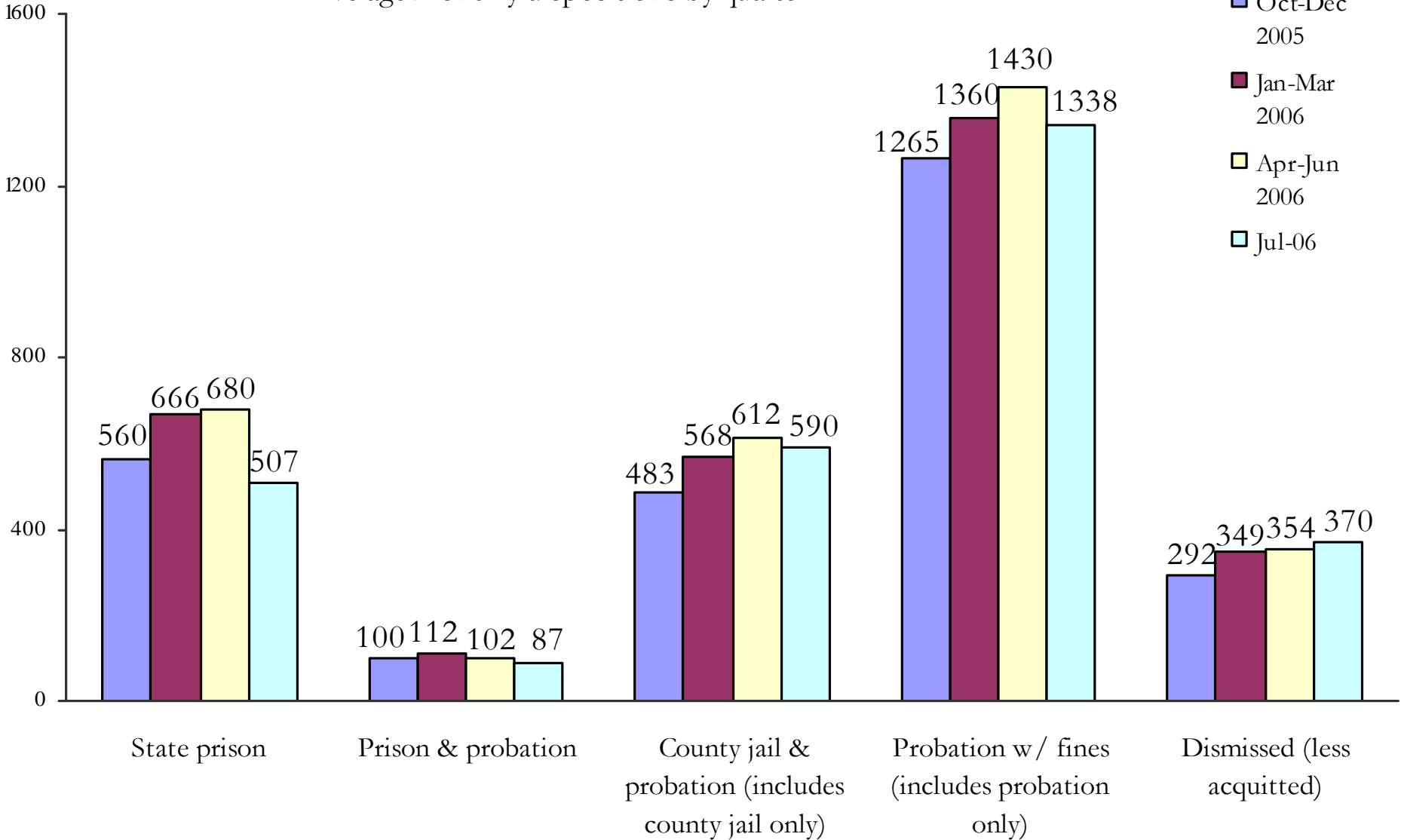




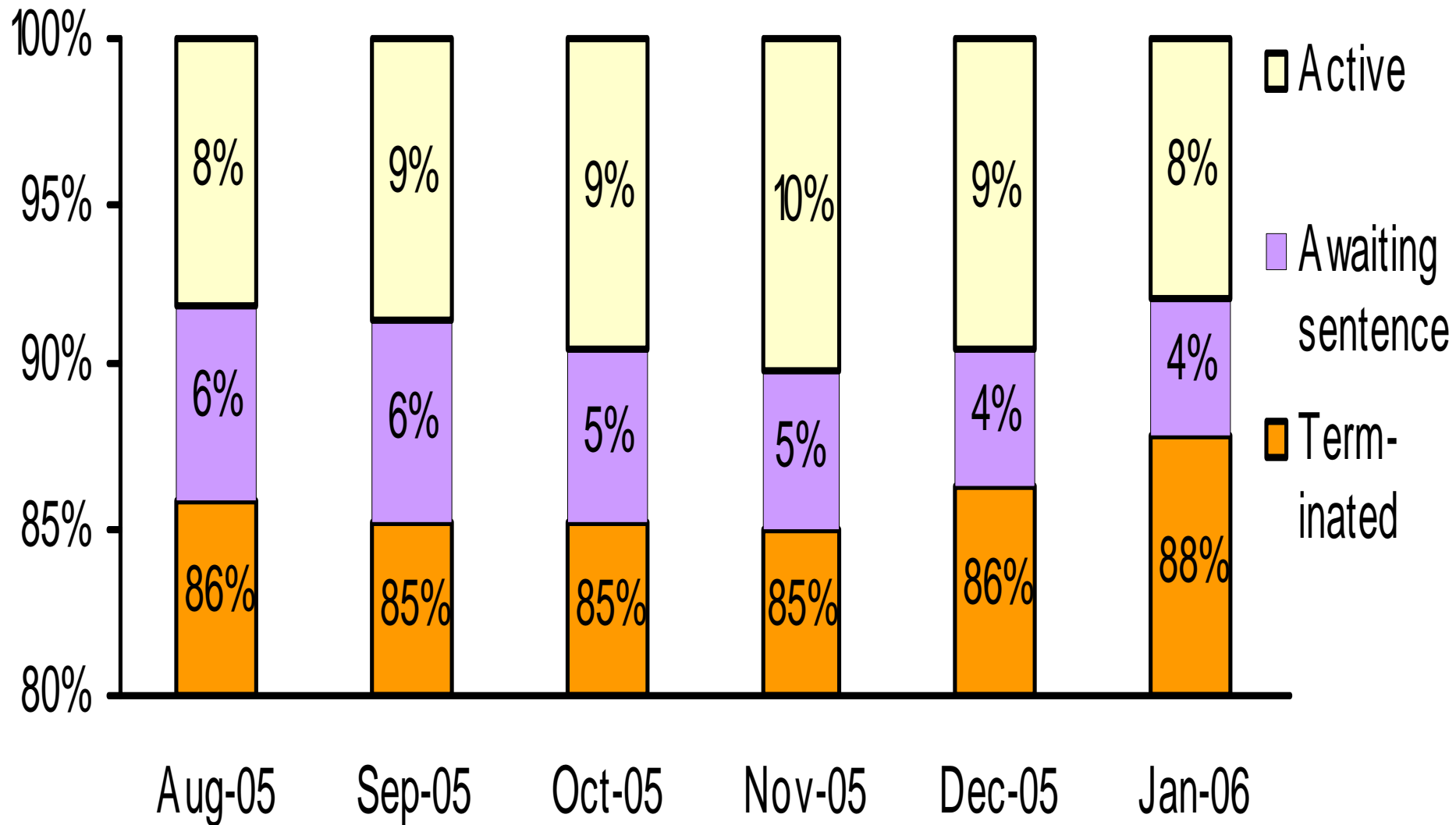
# Disposition of Cases Terminated

Average monthly dispositions by quarter

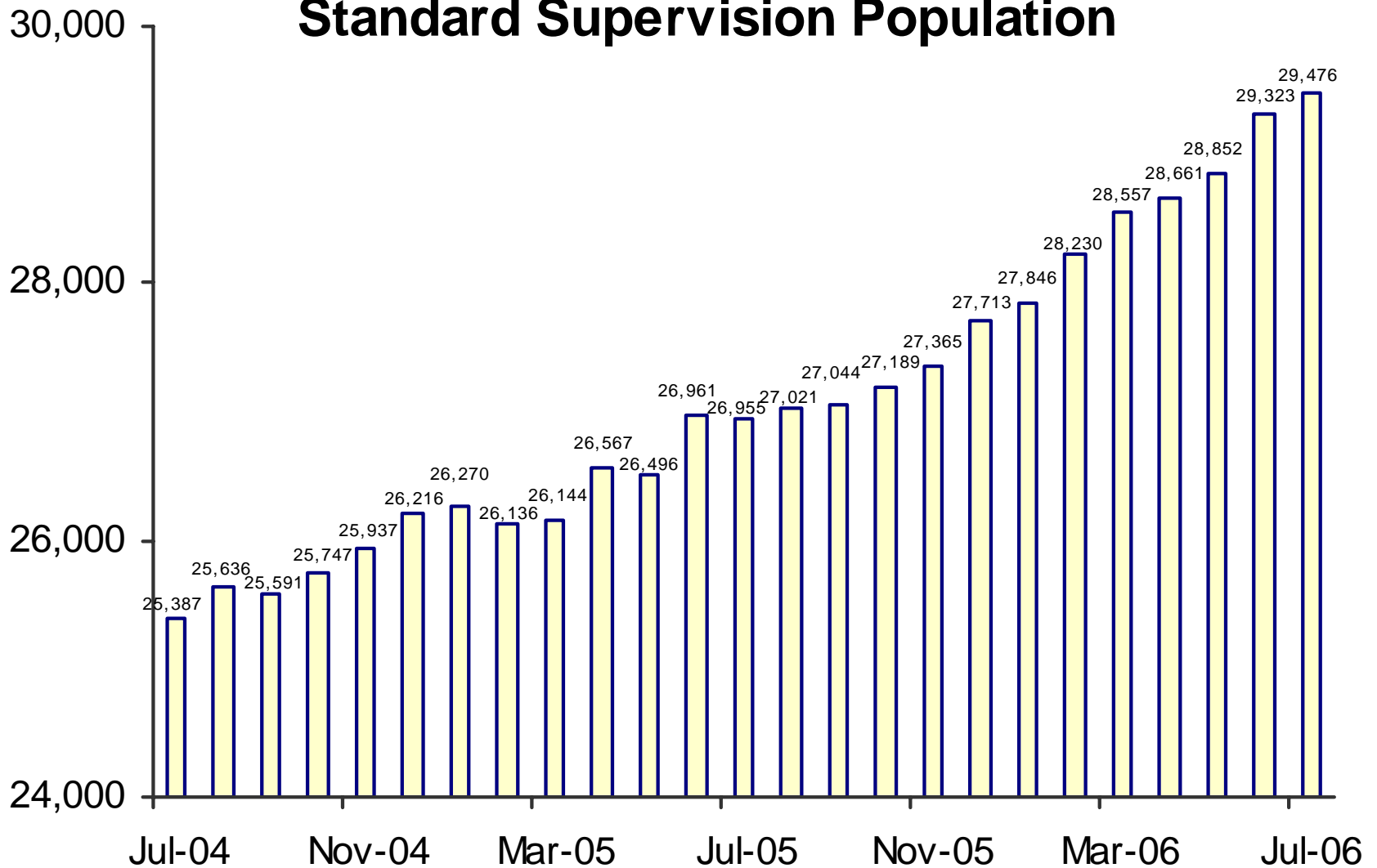
- Oct-Dec 2005
- Jan-Mar 2006
- Apr-Jun 2006
- Jul-06



# Status of Cases After 180 Days

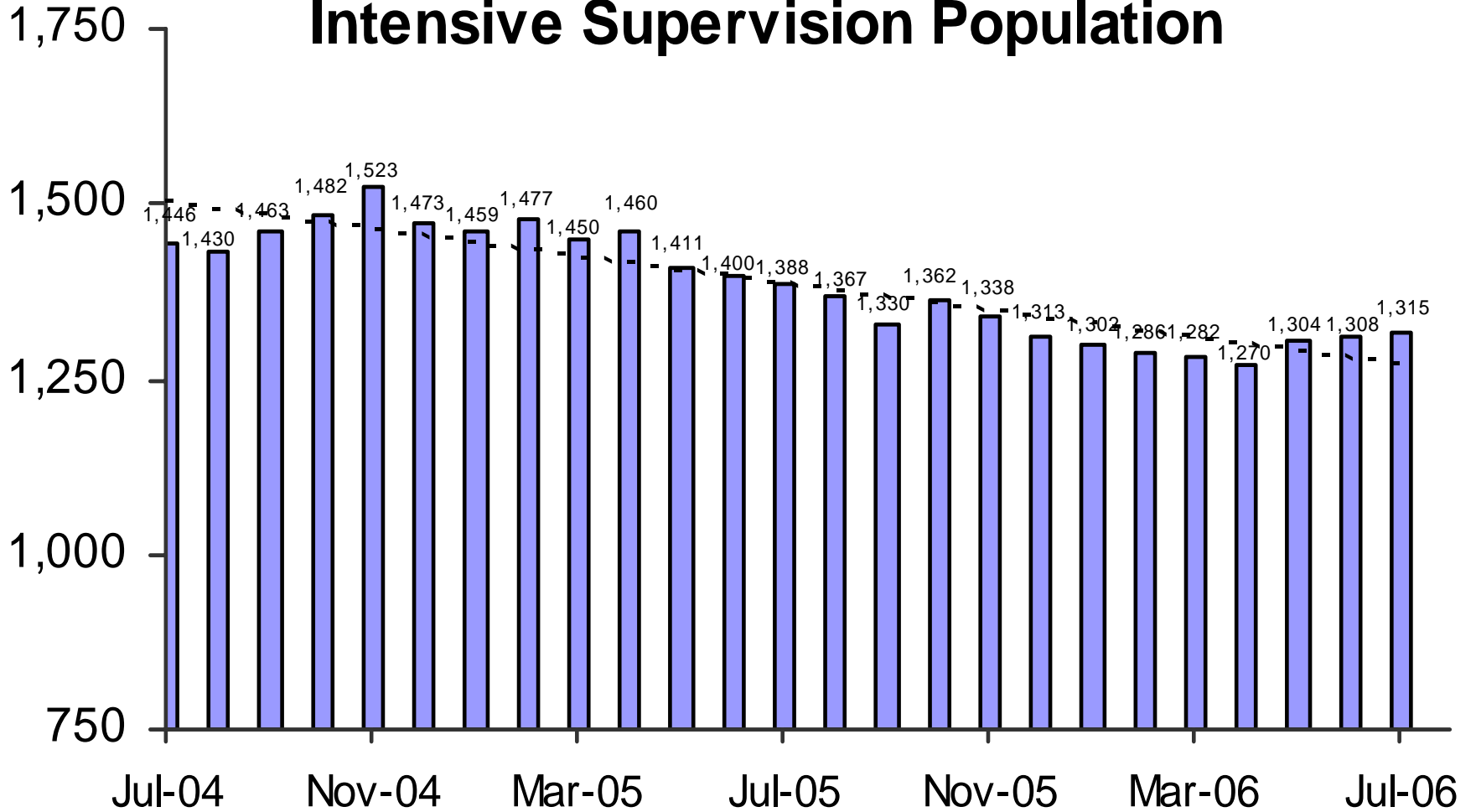


# Adult Probation Standard Supervision Population

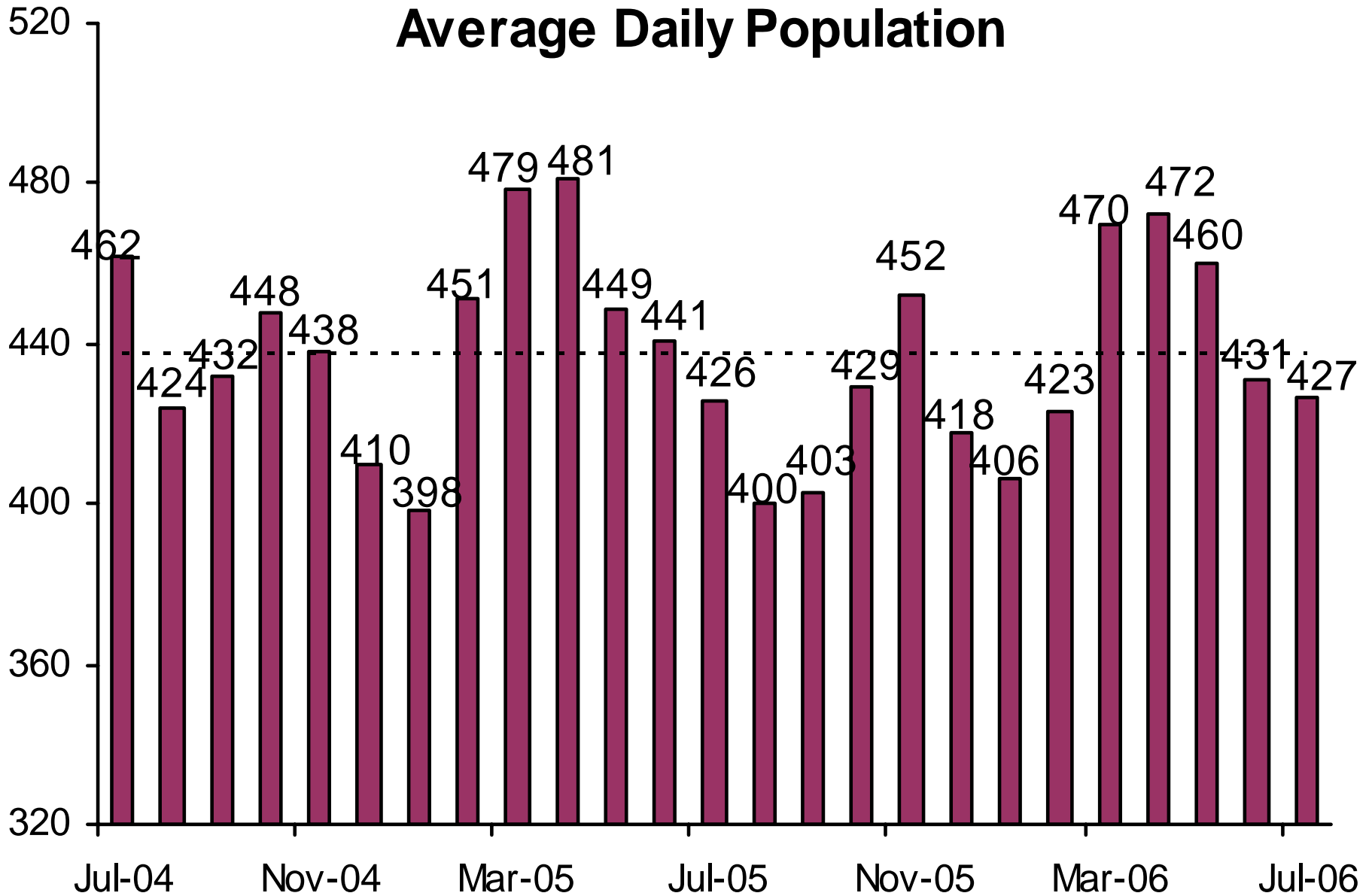


This population includes Interstate Compact and Report and Review caseloads, as reported to the Board of Supervisors and JLBC.

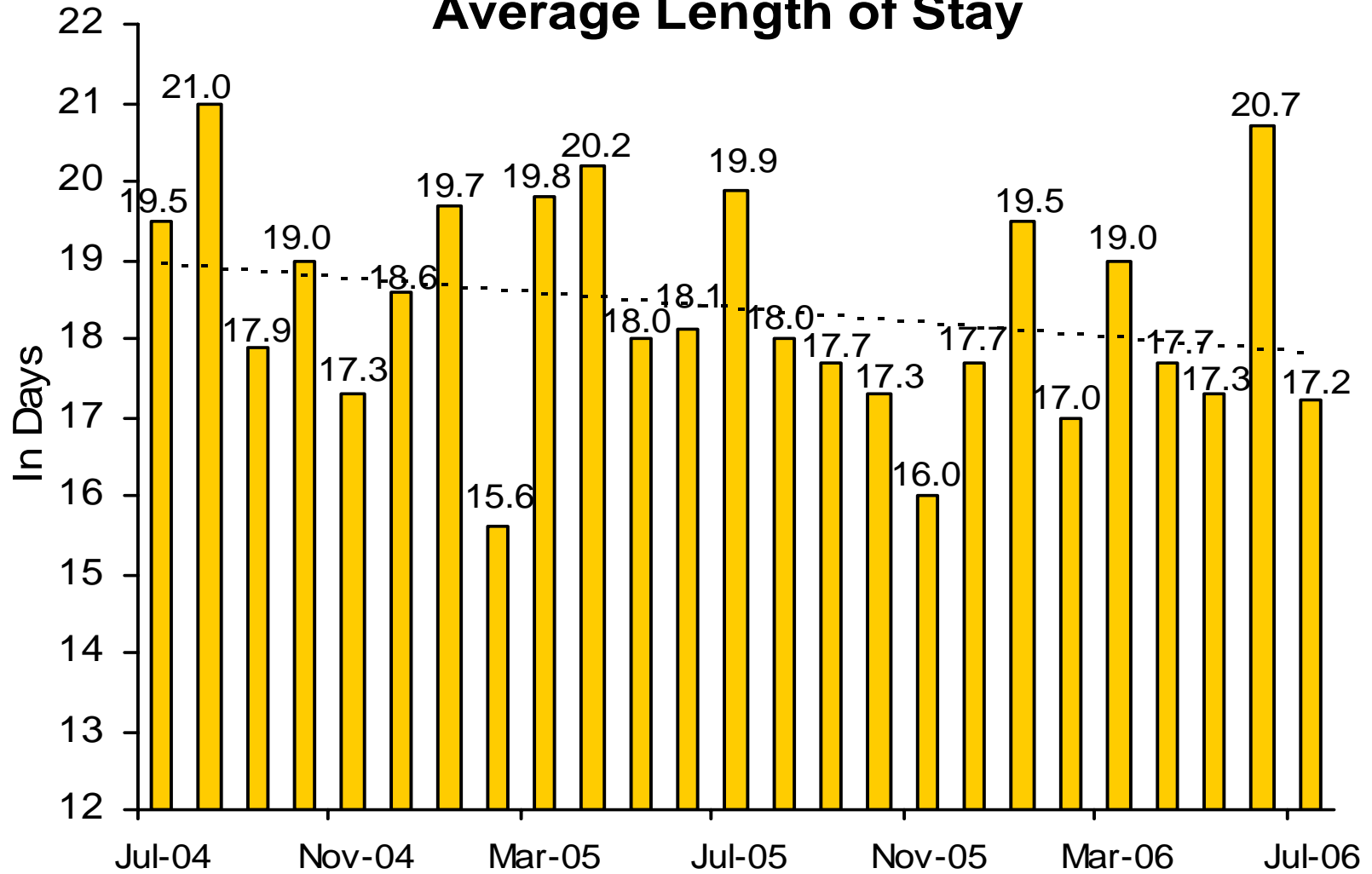
# Adult Probation Intensive Supervision Population



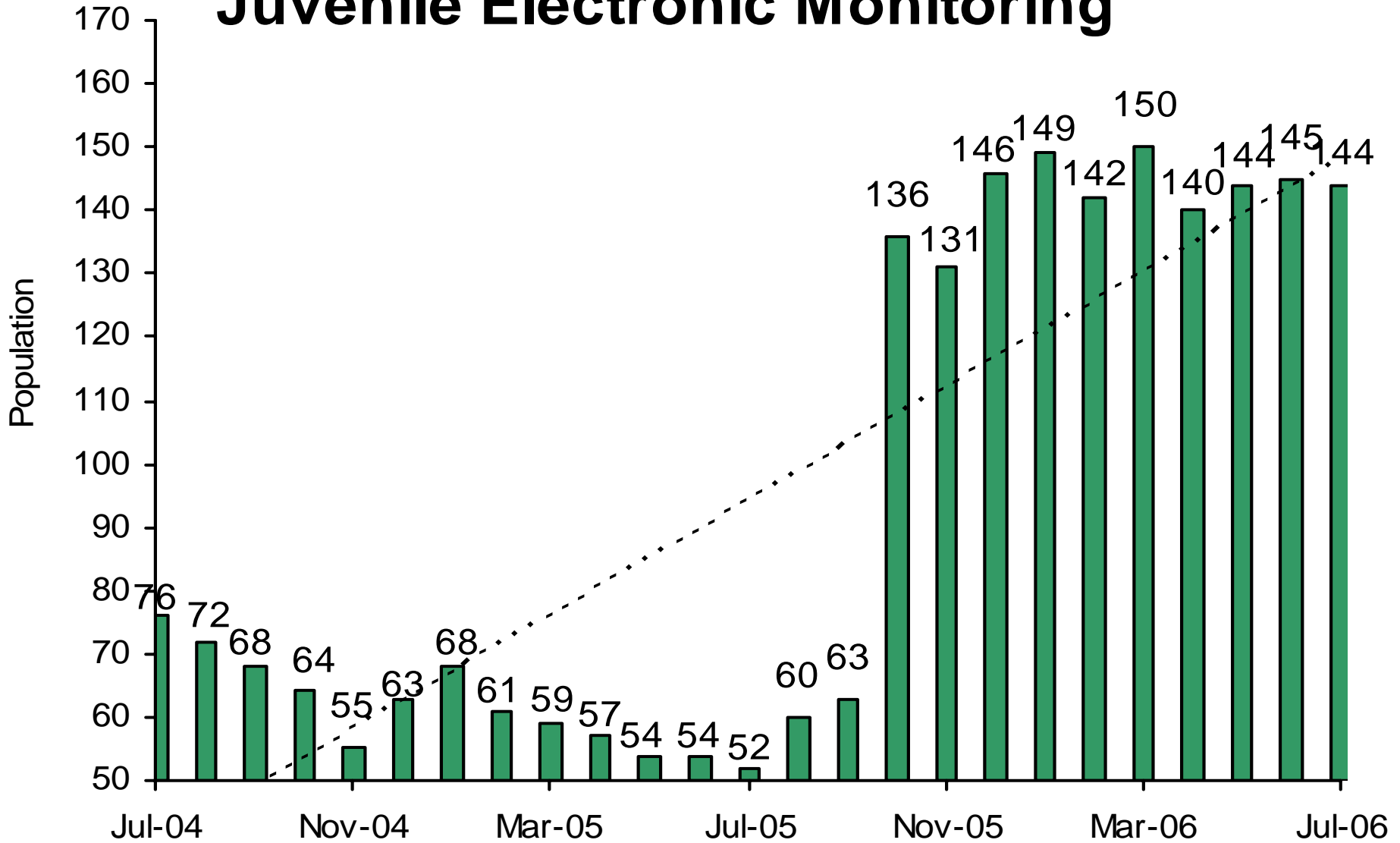
# Juvenile Detention Average Daily Population



# Juvenile Detention Average Length of Stay

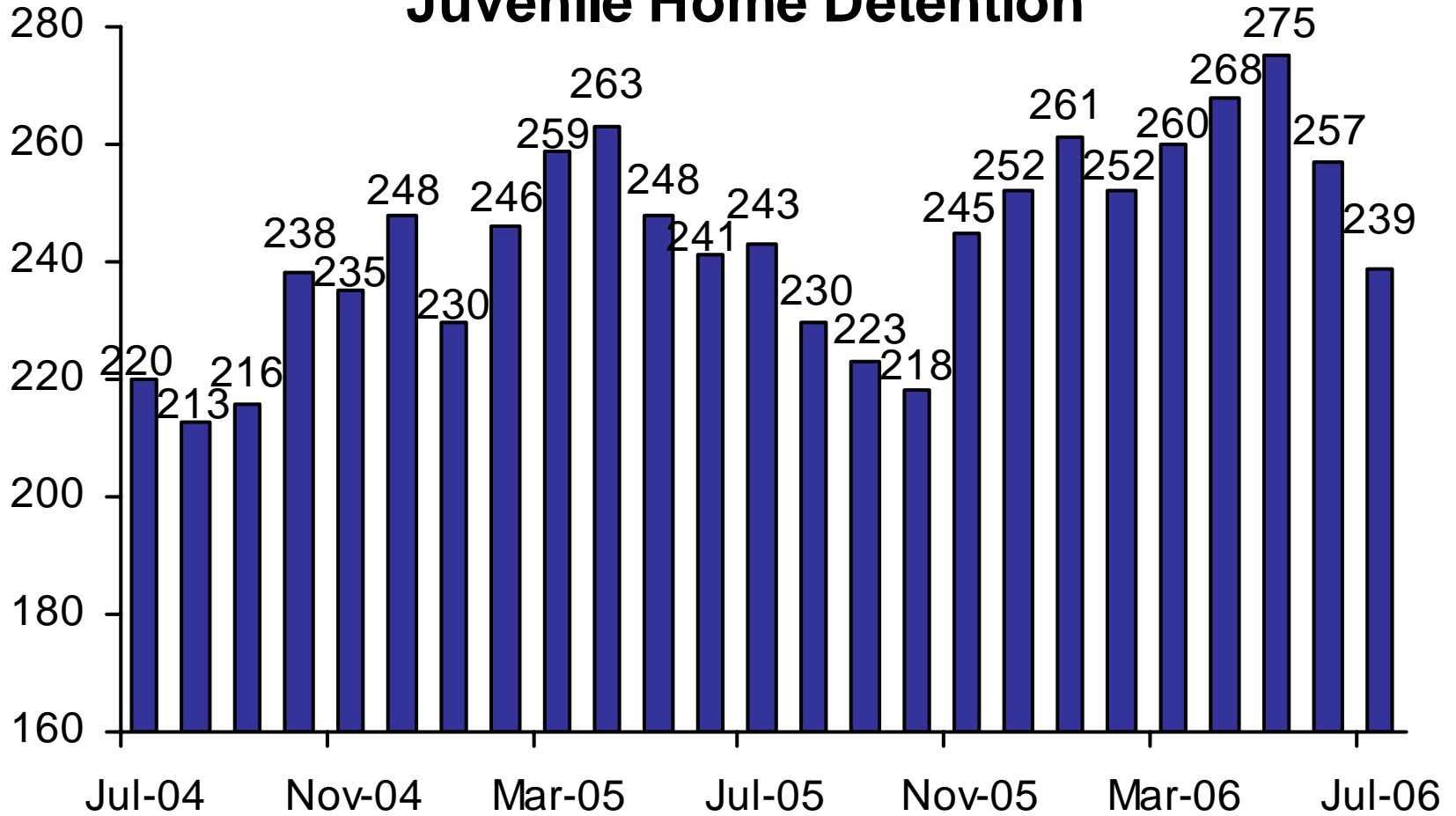


# Juvenile Electronic Monitoring



The increase beginning in October 2005 is due to more accurate data collection, including counting Intensive Probation use in addition to Standard use.

# Juvenile Home Detention





# Juvenile Probation

■ # on standard probation ■ # on intensive probation

