



Monthly Performance Report for June 2005 / End of Fiscal Year

Monthly Averages						
	FY 2001	FY 2002	FY 2003	FY 2004	FY 2005	June 2005
Sheriff's Office						
Bookings	9,614	9,641	9,875	10,176	9,975	10,249
Average Daily Population	7,059	7,557	8,044	8,657	9,054	9,581
Avg Length of Stay (in days)	22.4	23.8	24.4	26.0	27.7	28.0
Superior Court						
Filings	2,342	2,515	2,904	3,062	2,996	3,575
Terminations	2,259	2,367	2,330	2,612	2,758	2,939
Clearance Rate	96%	94%	80%	85%	93.0%	82.2%
Active Pending Inventory	7,990	7,419	8,123	9,106	10,002	10,603
Trials Completed	69	61	59	42	51	50
Trial Rate	2.9%	2.4%	2%	1.4%	1.7%	1.4%
Adult Probation						
Pretrial General Supervision	544	609	700	974	978	784
Pretrial Intensive Supervision	362	356	331	672	816	879
Pretrial Electronic Monitoring	51	78	97	154	164	177
Standard Probation Supervision	22,788	24,448	25,400	23,957	26,091	26,961
Intensive Probation Supervision	1,666	1,564	1,267	1,079	1,456	1,400
Juvenile Probation and Detention						
Avg Daily Detention Pop	400	407	401	431	443	441
Avg Length of Stay (in days)	14.1	14.7	15.1	16.6	18.7	18

Criminal Justice System News

Adult Incarceration: Bookings in June (10,249) were slightly down from May's 10,285. The FY05 booking average was down compared to FY04. However, the FY05 ADP of 9,054 is the highest ever.. The June average daily population for pre-trial detainees topped 6,000 for the first time, at 6,099.

The average length of stay also increased to its highest level ever in FY05 – 27.7 days. The ALOS for agency holds and the pretrial population decreased in June, compared to May. However, the ALOS for the sentenced population increased from 30.16 in May to 32.51 in June. Overall ALOS decreased slightly from 28.1 days in May to 28 days in June.

Filings & Case Processing: Superior Court filings and terminations increased in June compared to May. The FY05 clearance rate is the highest since FY02. The active pending case inventory increased from 10,229 in May to 10,603 in June, while pending arraigned cases increased from 9,934 to 10,002.

Adult Probation: All pretrial supervision populations increased from FY04 to FY05. Pretrial Intensive Supervision saw the largest increase, from 672 in FY04 to 816 in FY05. (Please note: June pretrial numbers are "soft" due to conversion to iCIS.)

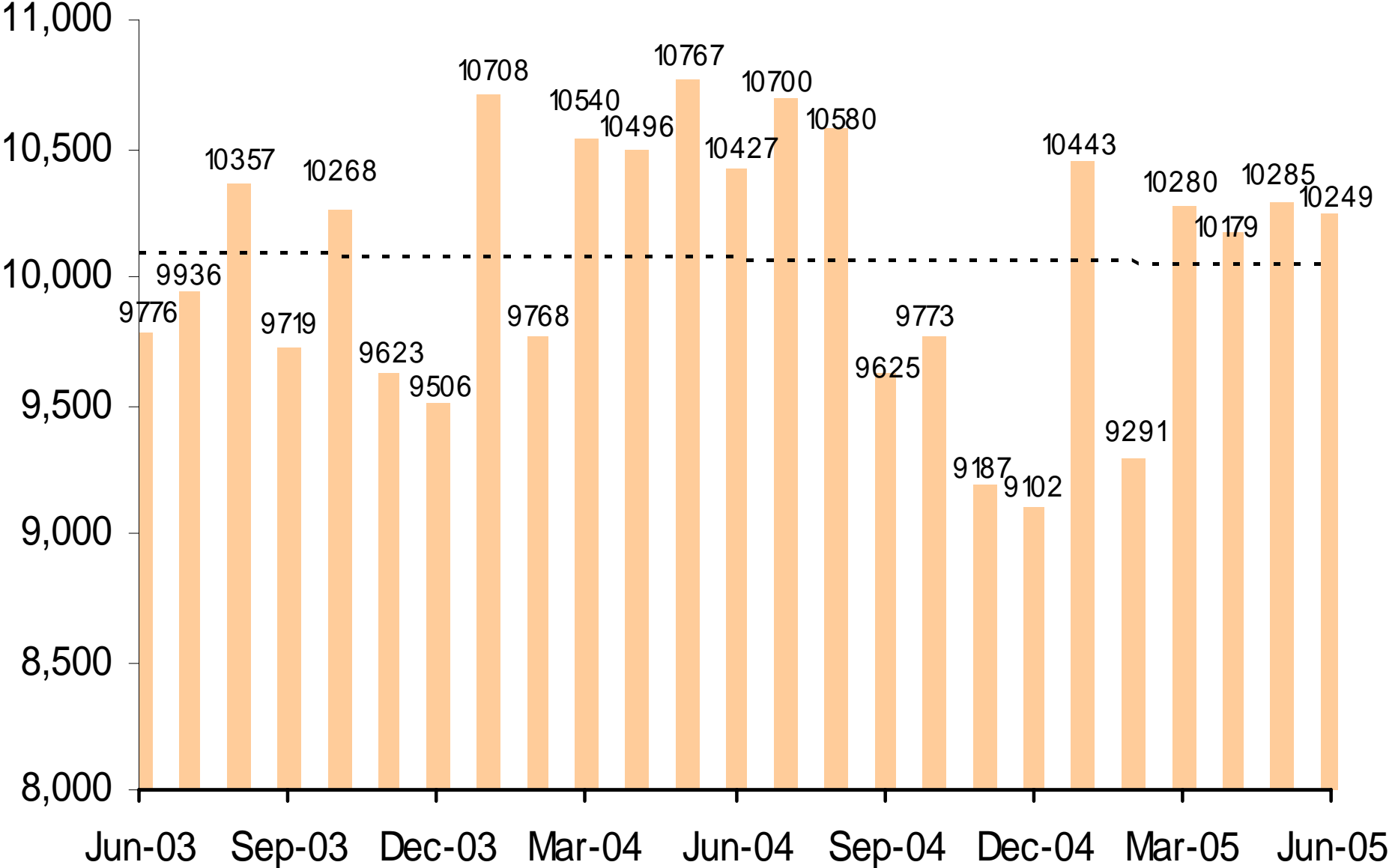
Levels of standard probation supervision increased from 26,496 in May to 26,961 in June. FY05 standard supervision levels cannot be compared to other FYs due to a change in the way data is reported. Levels of intensive probation fell from May to June, but average FY05 numbers are the highest seen since FY02.

Juvenile Detention: The average daily population fell from 449 in May to 441 in June. This is the lowest number seen since January 2005. However, FY05 ADP and ALOS are the highest ever. Juvenile electronic monitoring remained the same from May to June, while home detention decreased slightly.

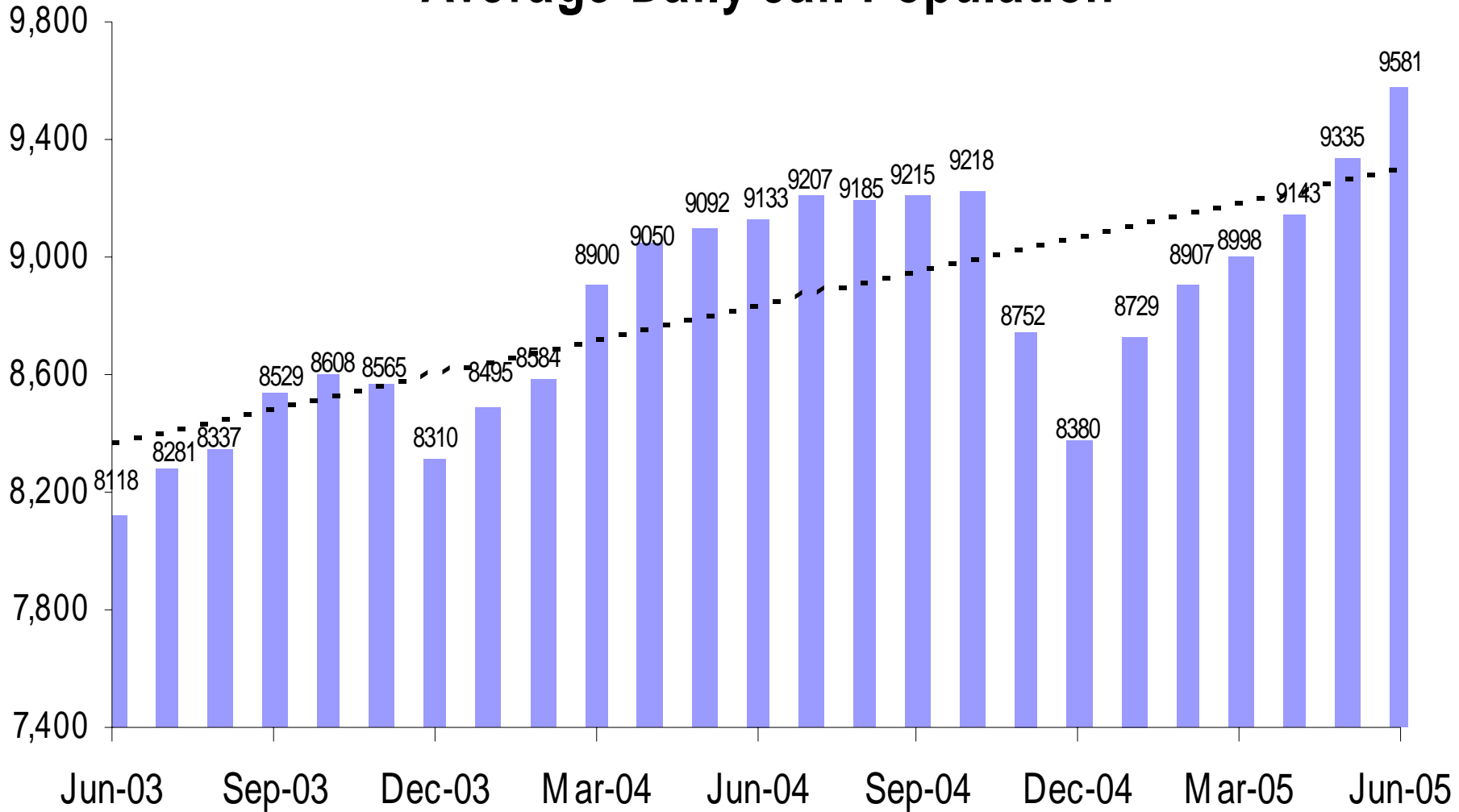
A criminal justice system-wide goal is to enhance the utility and timeliness of management information on case processing, in an effort to help agencies effectively address current events. An interagency committee of McJustice meets regularly to accomplish this and develop this report. Input from readers is welcomed. Please contact Amy Rex at rexa@mail.maricopa.gov or 602-506-1310.

*****For recipients outside the County e-mail system*****
This report is now available on-line. Please contact Amy Rex at rexa@mail.maricopa.gov if you are interested in receiving an on-line version instead of a hard copy. Thank you for helping to protect our resources!

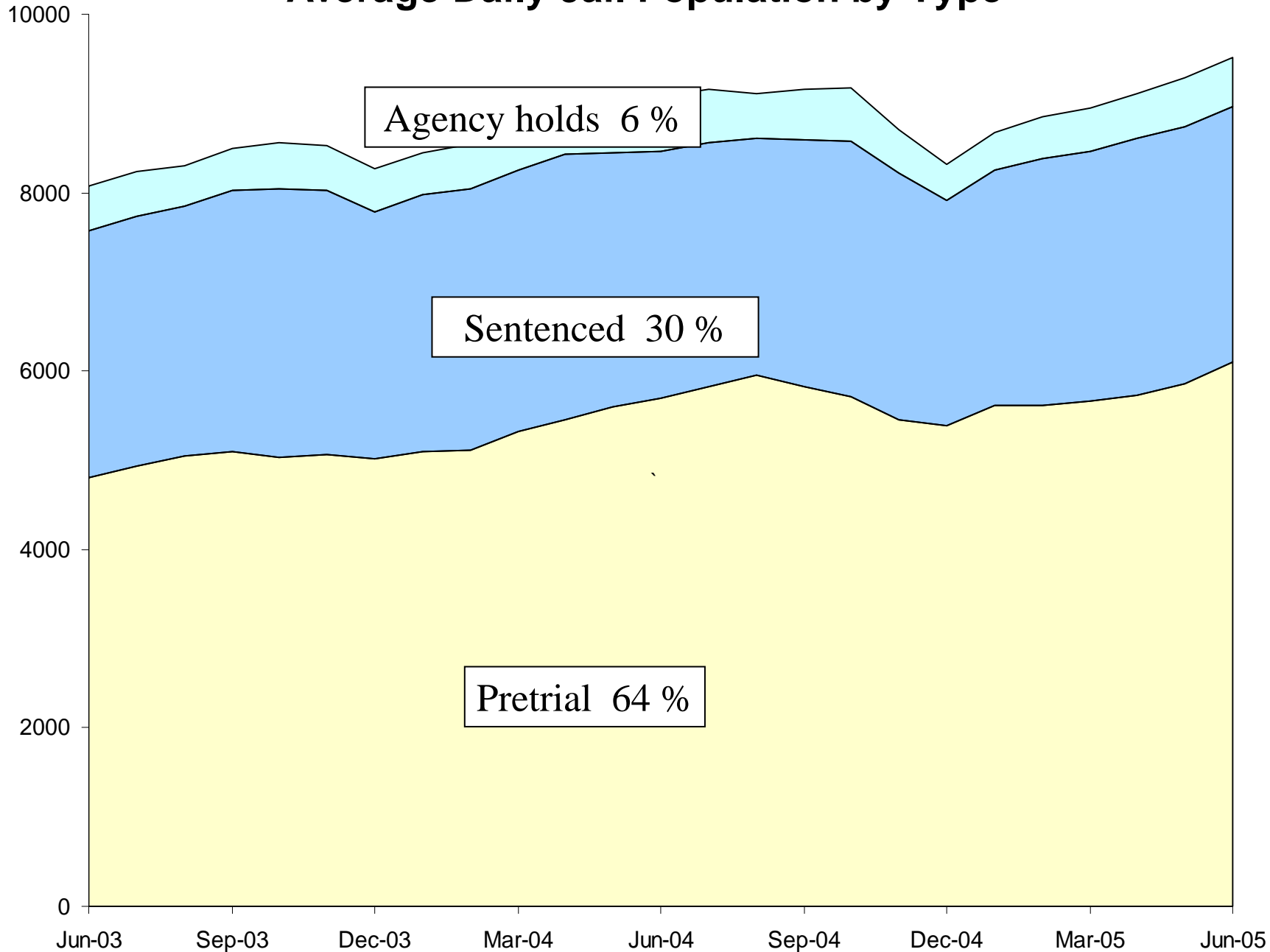
Jail Bookings



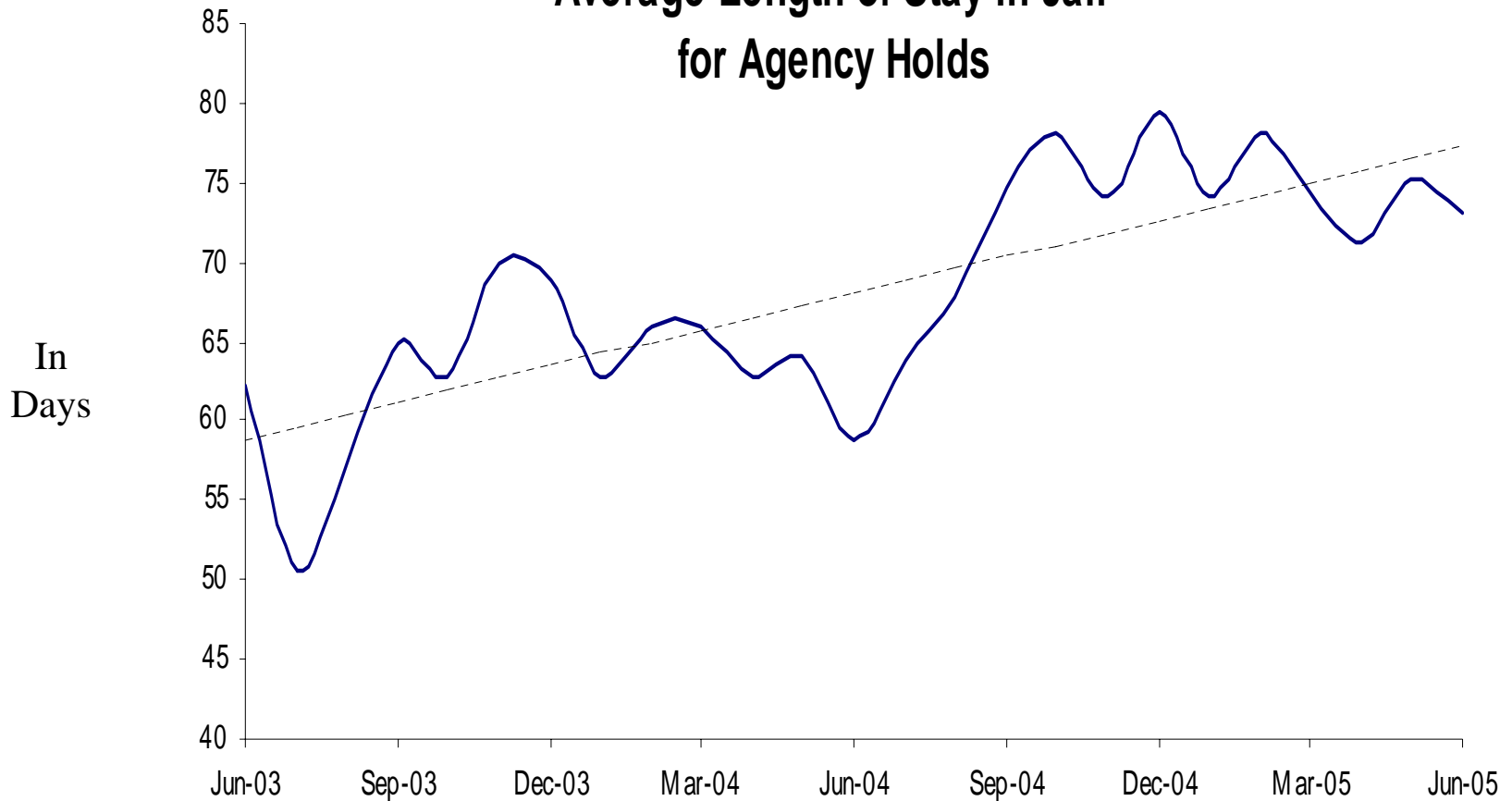
Average Daily Jail Population



Average Daily Jail Population by Type

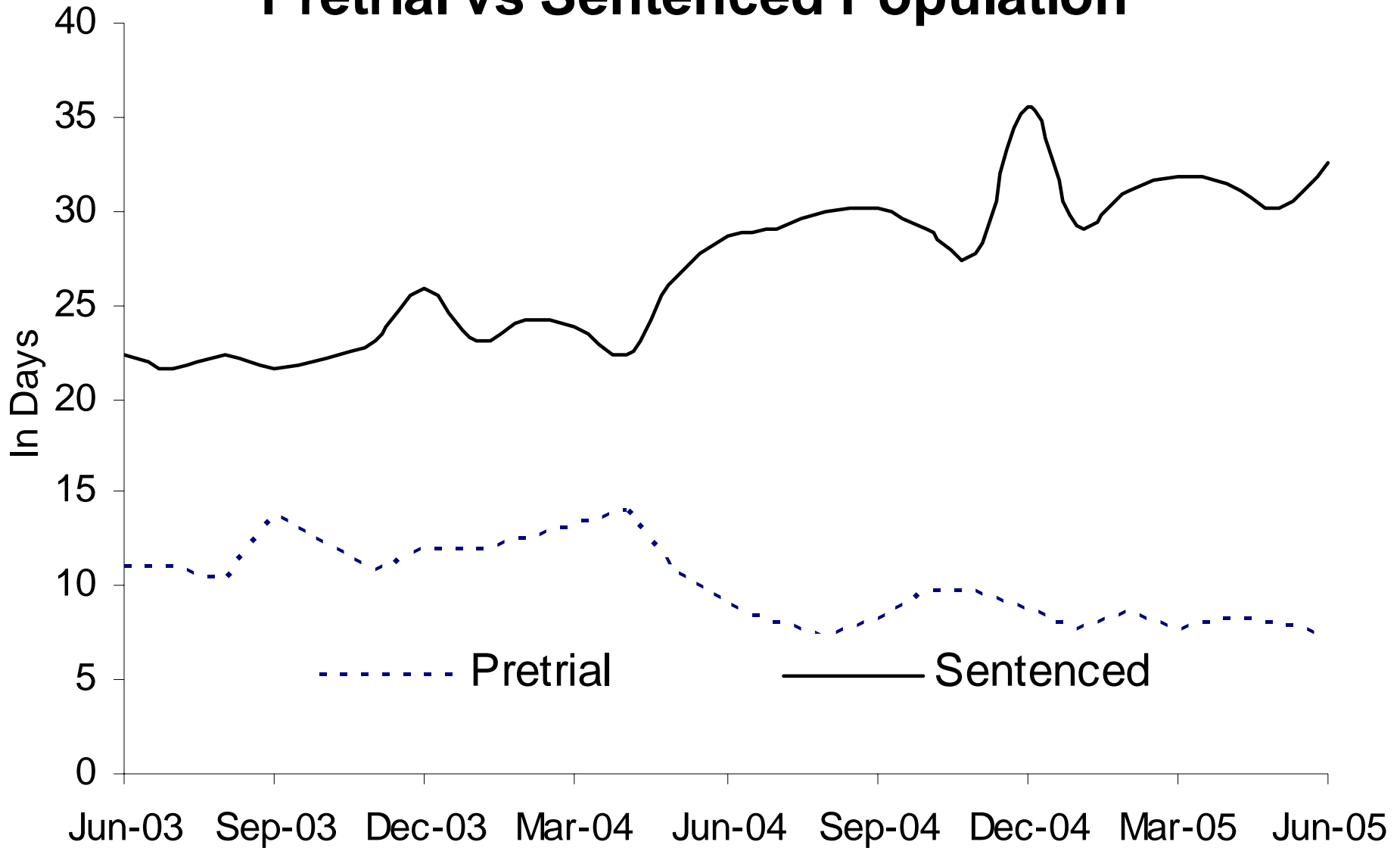


Average Length of Stay in Jail for Agency Holds

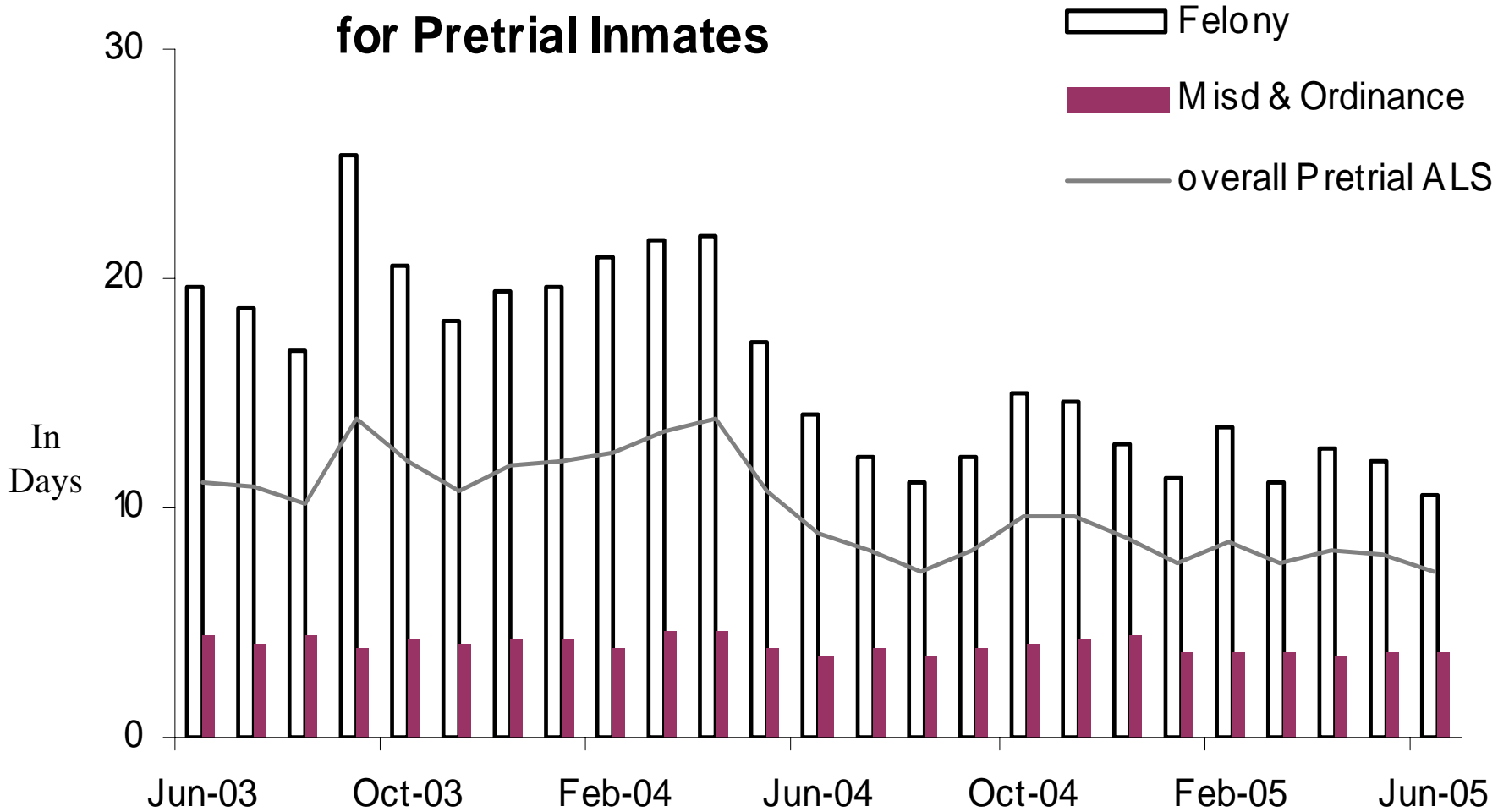


74% Dept of Corrections, 14% Federal agencies, 12% other

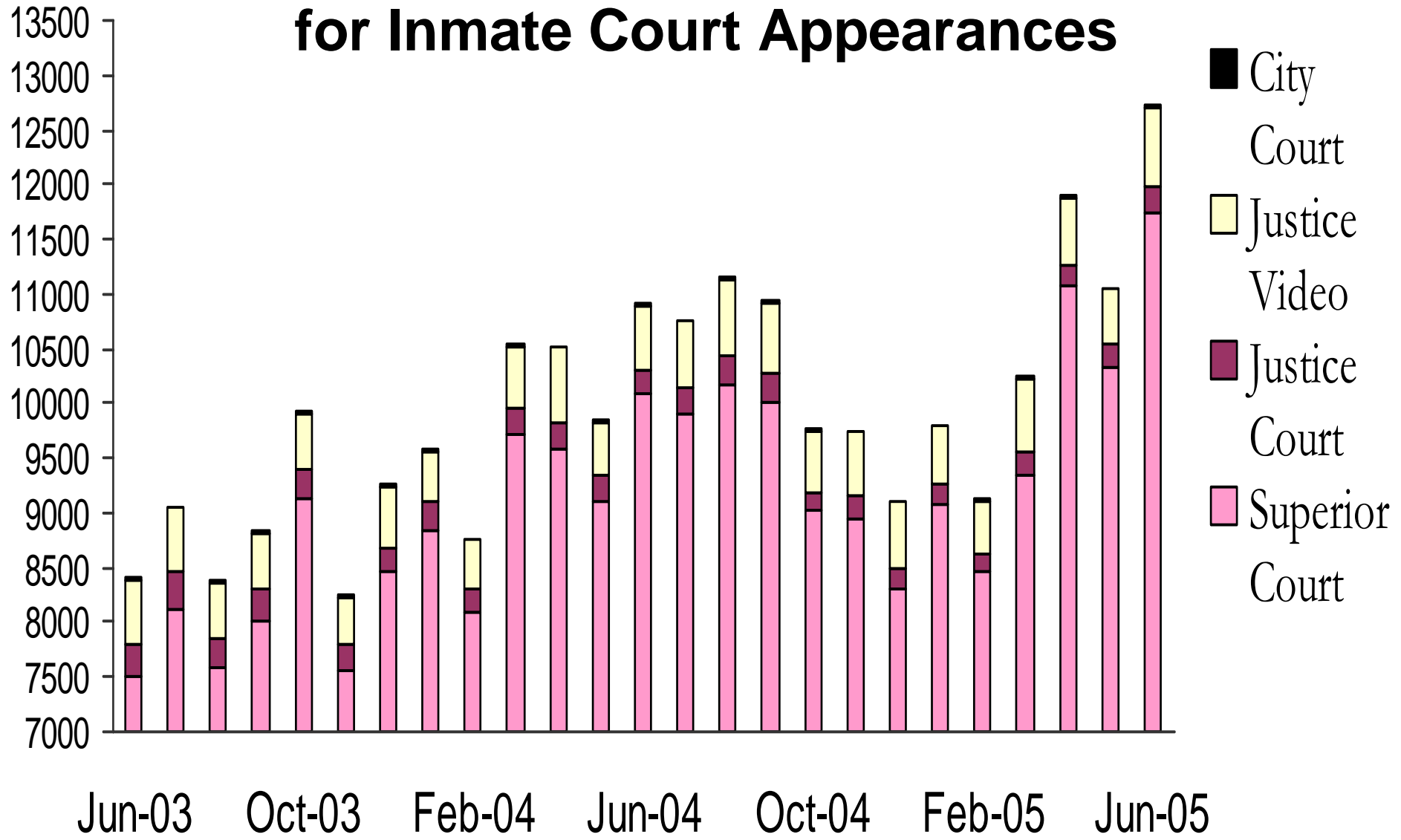
Average Length of Stay in Jail Pretrial vs Sentenced Population



Average Length of Stay in Jail for Pretrial Inmates



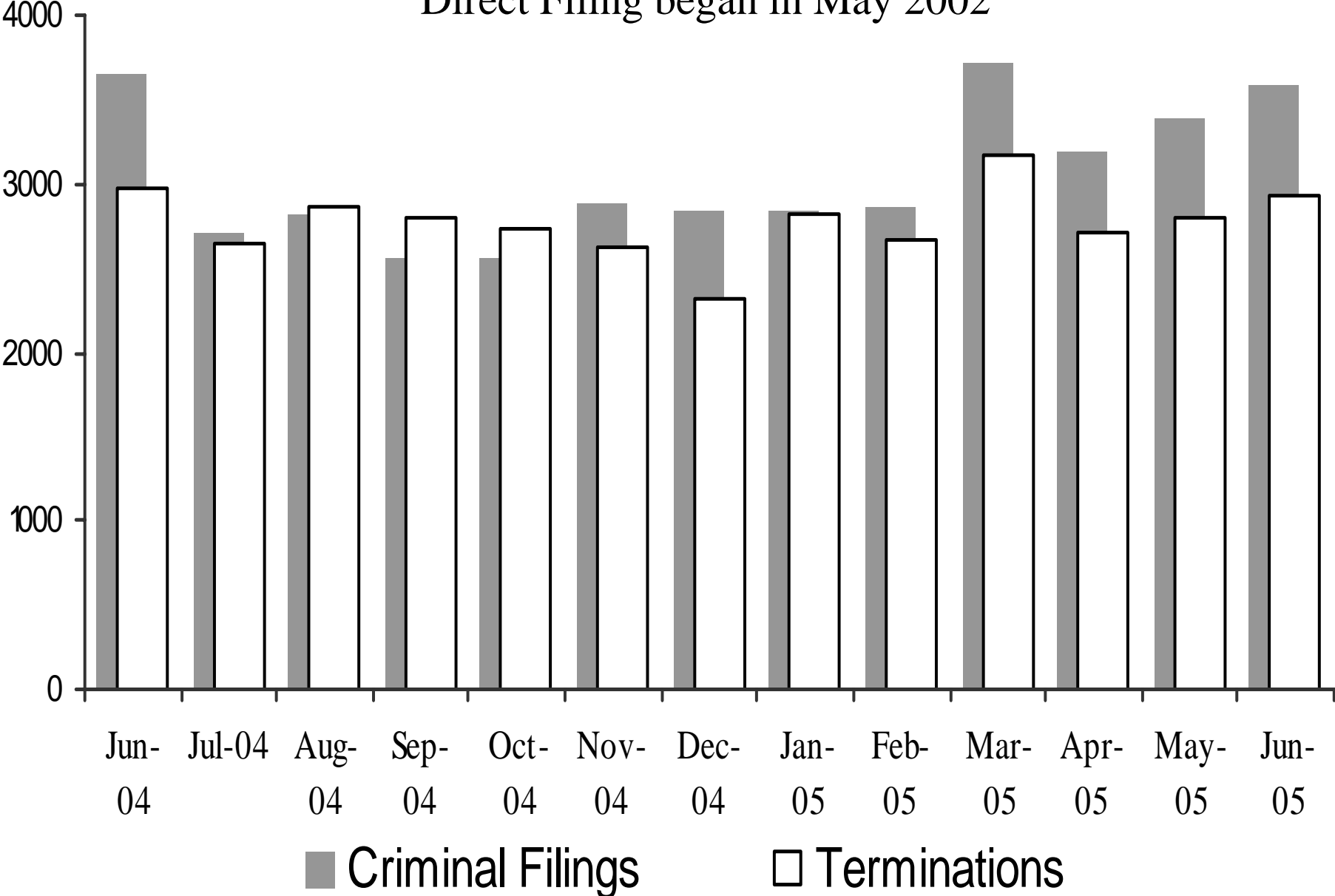
Sheriff's Office Transports for Inmate Court Appearances



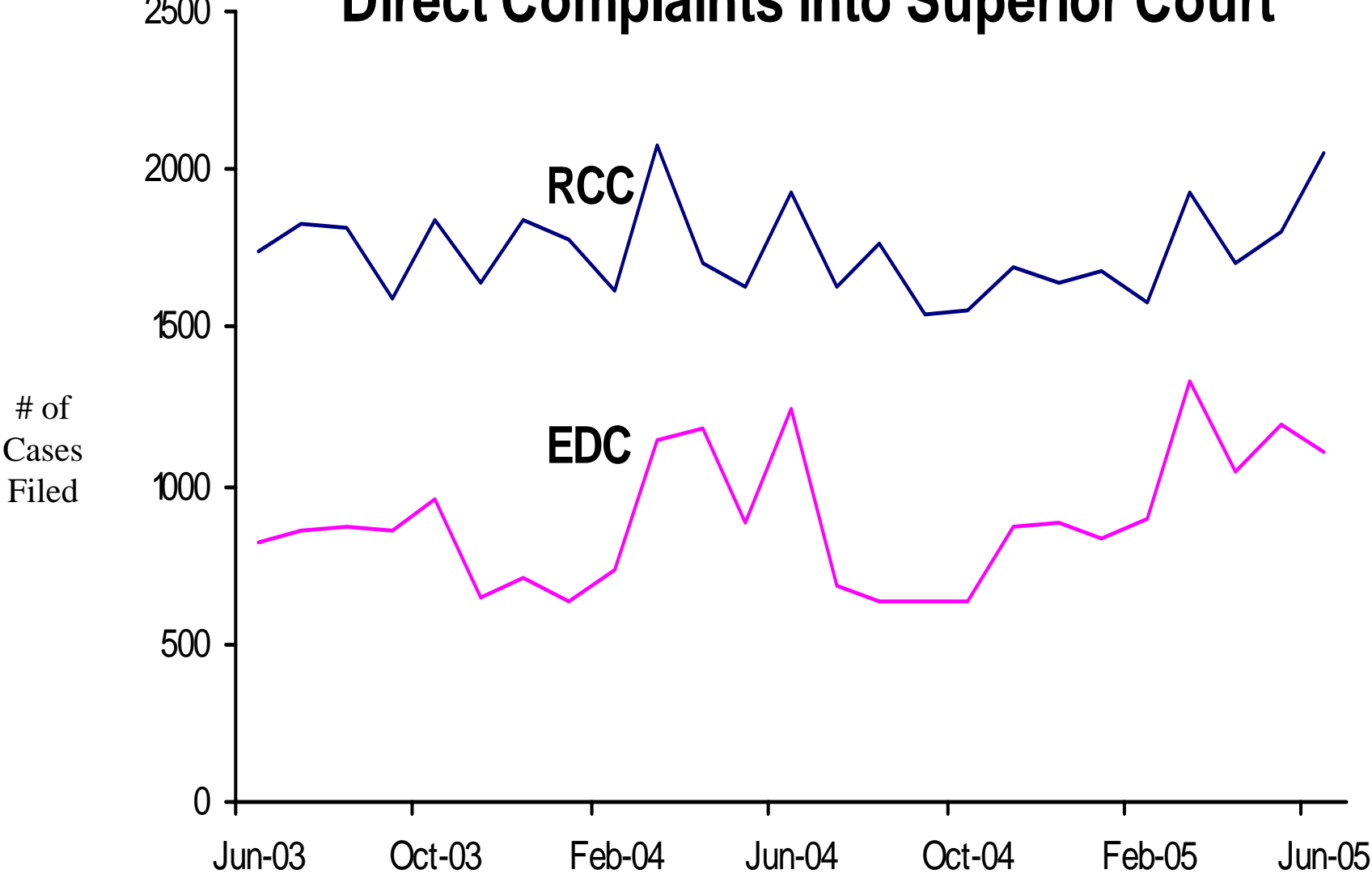
Since Direct Filing into Superior Court began May 2002, remaining transports to Justice Courts are for misdemeanor cases.

Superior Court Filings and Terminations

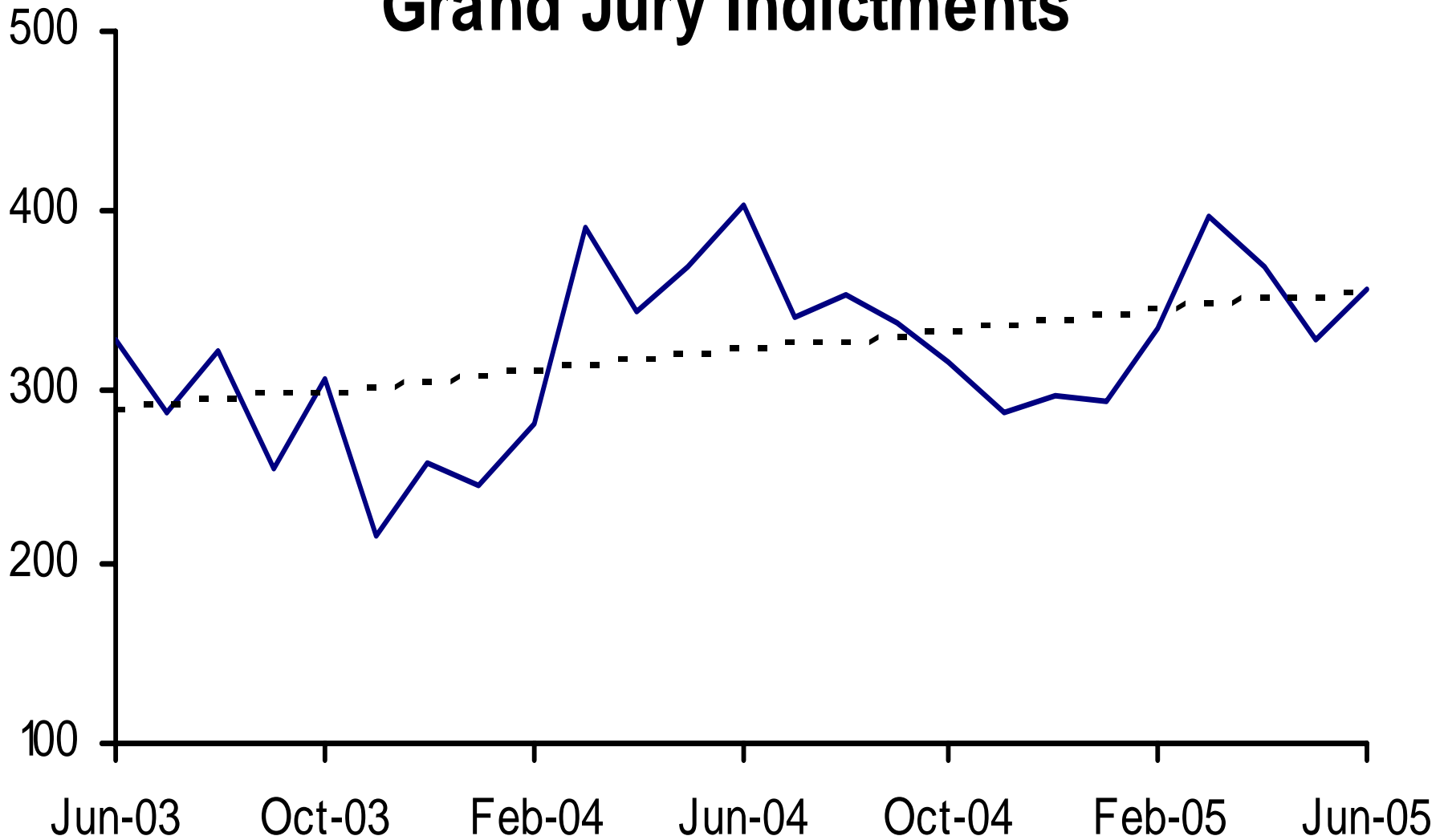
Direct Filing began in May 2002



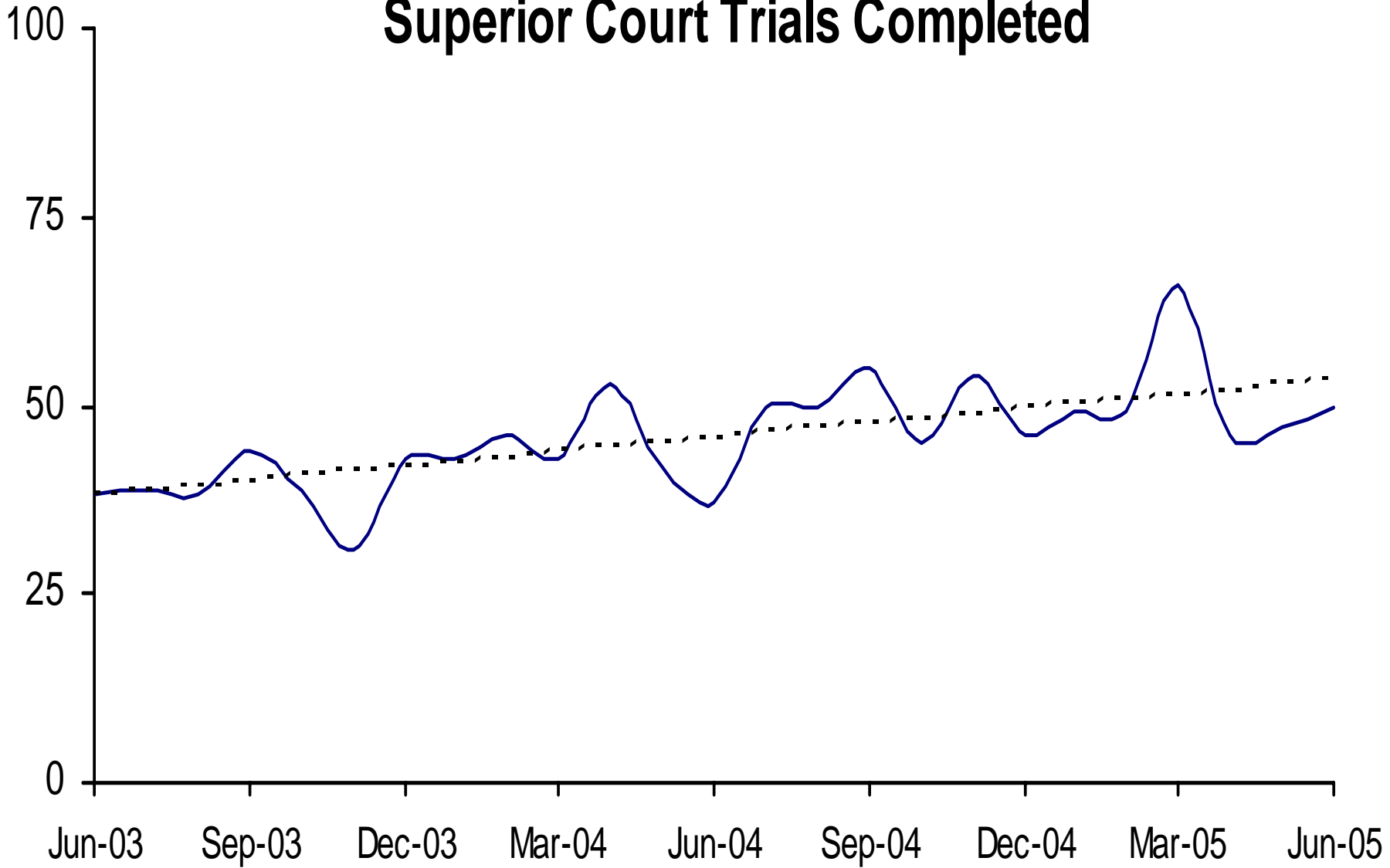
Direct Complaints into Superior Court



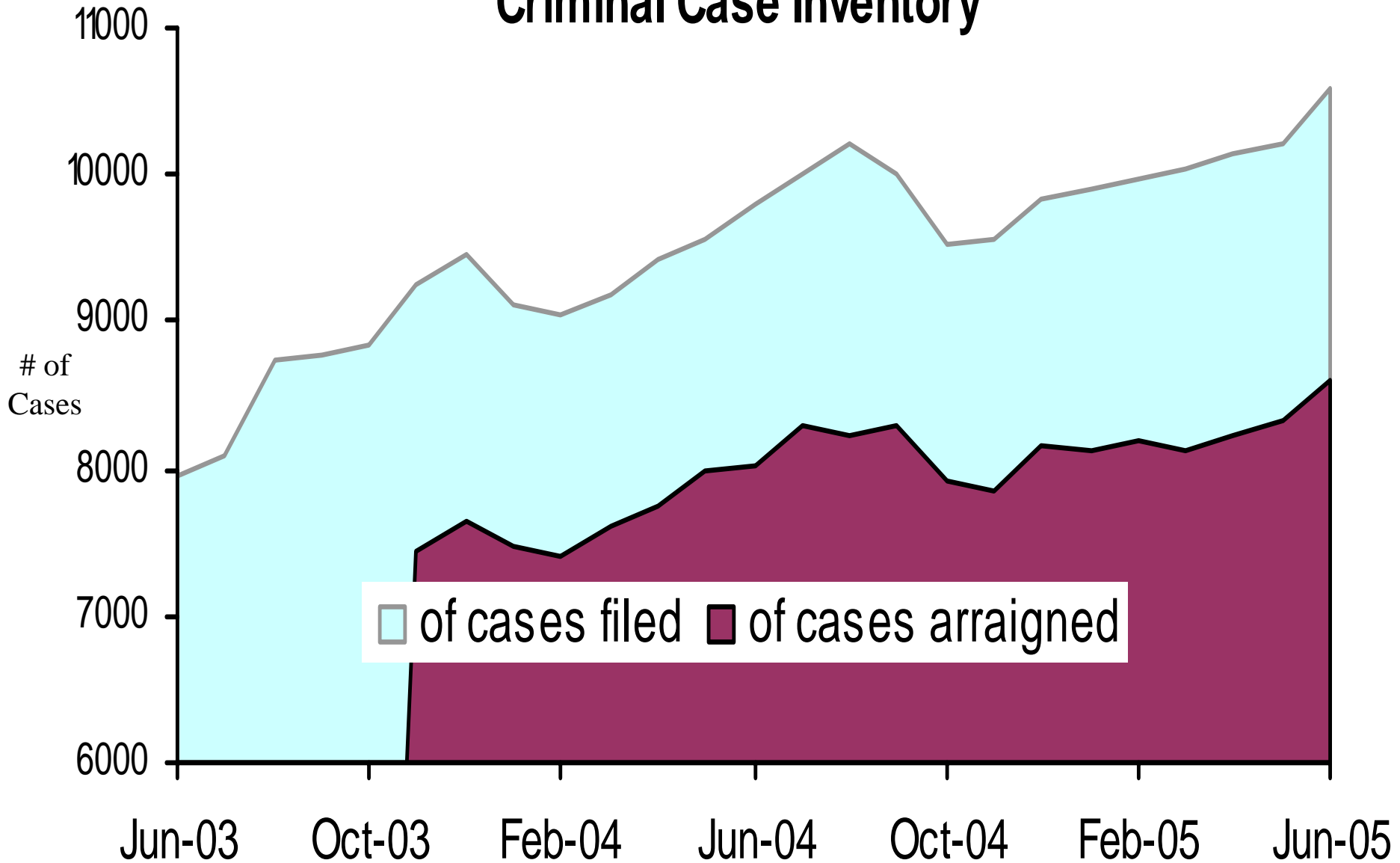
Grand Jury Indictments



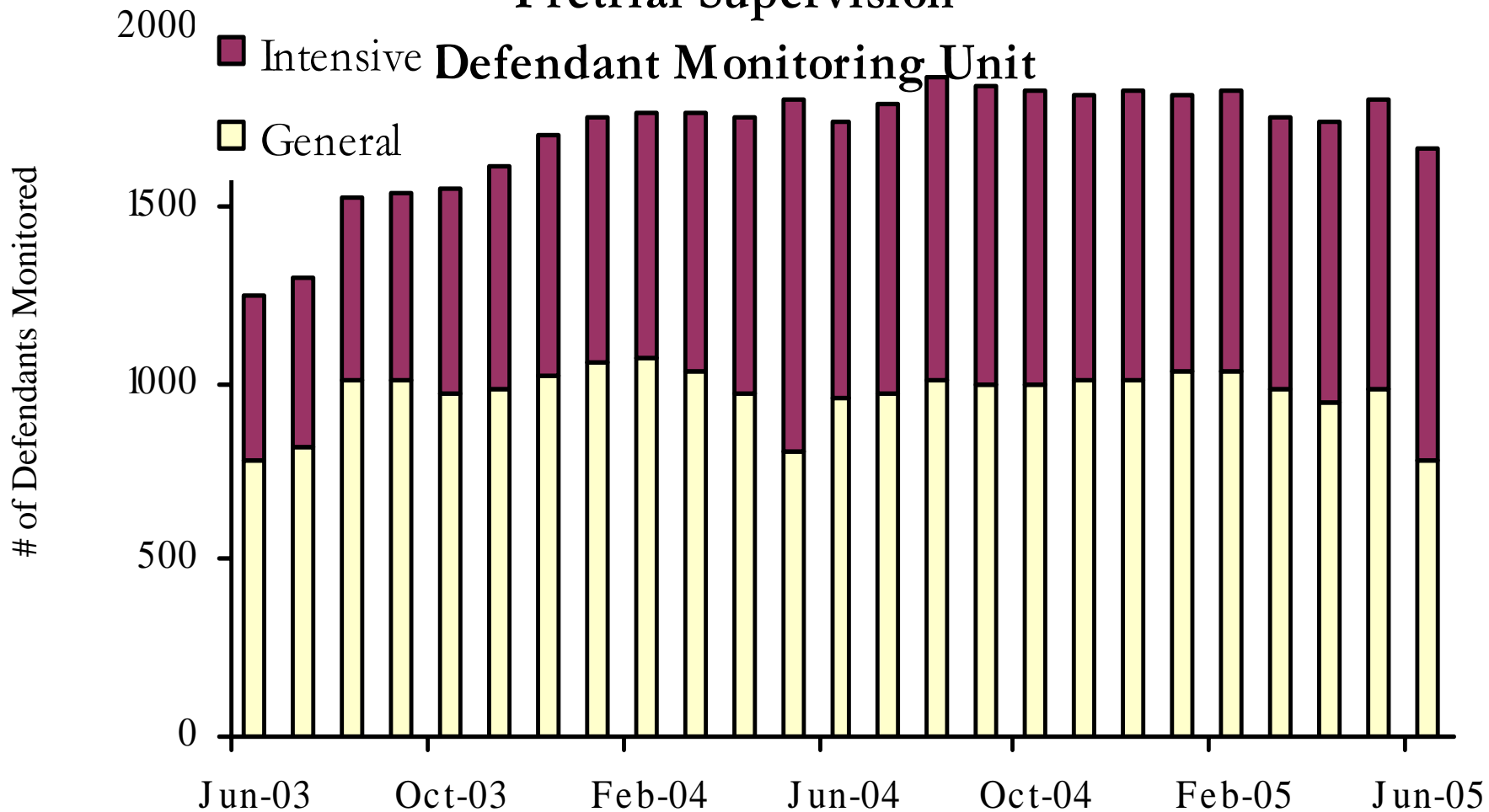
Superior Court Trials Completed



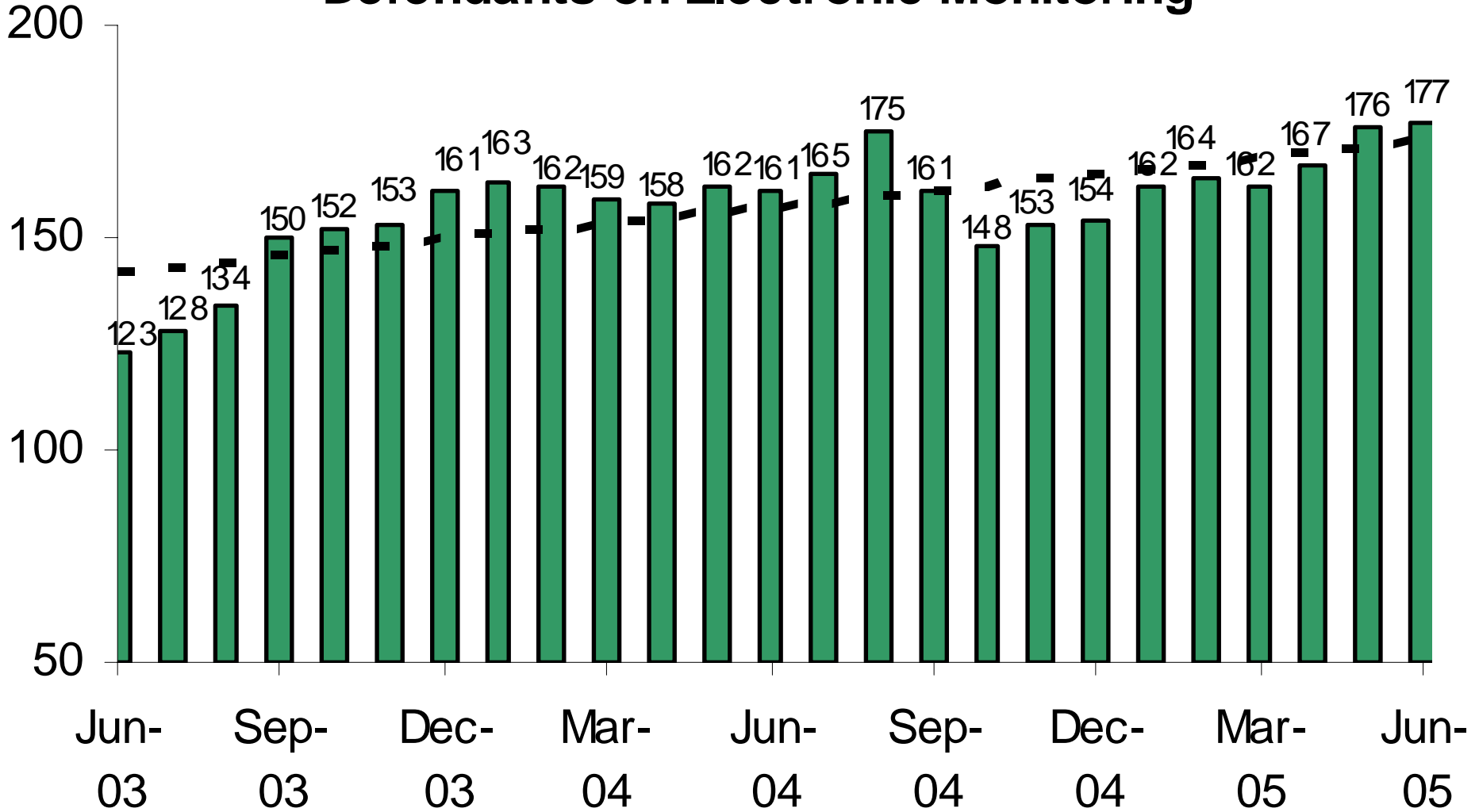
Active Pending Criminal Case Inventory



Pretrial Supervision



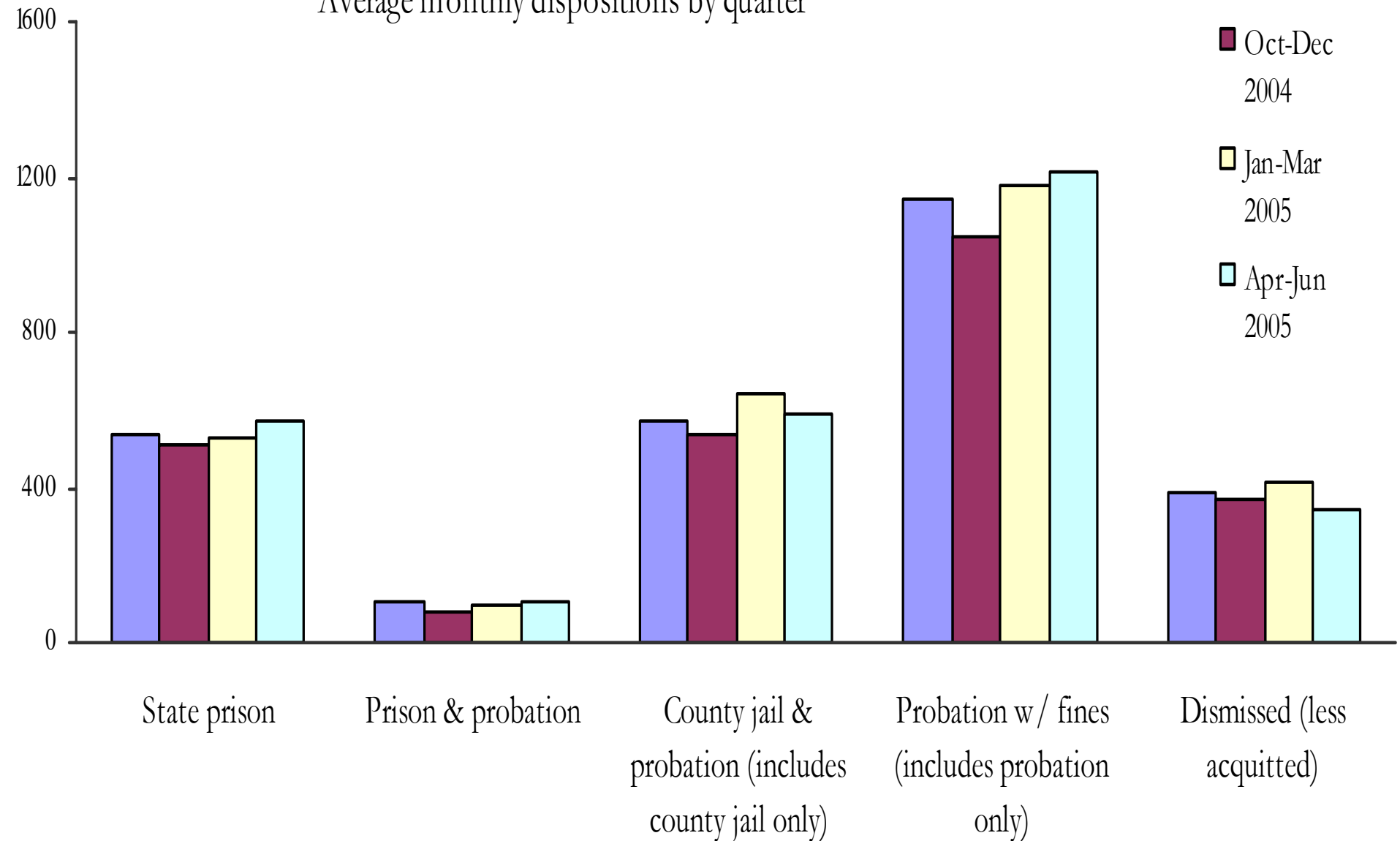
Pretrial Supervision Defendants on Electronic Monitoring



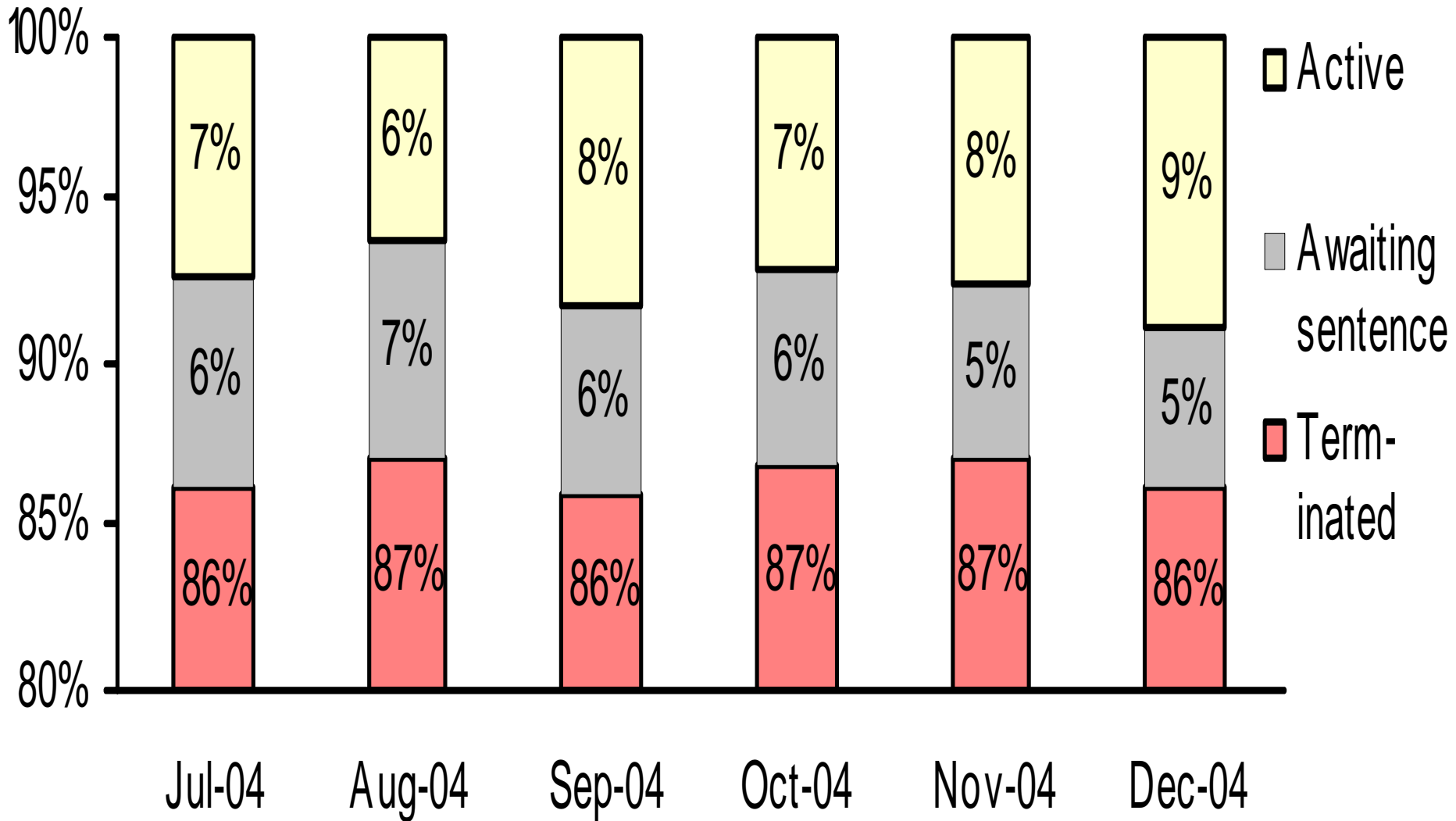
Disposition of Cases Terminated

Average monthly dispositions by quarter

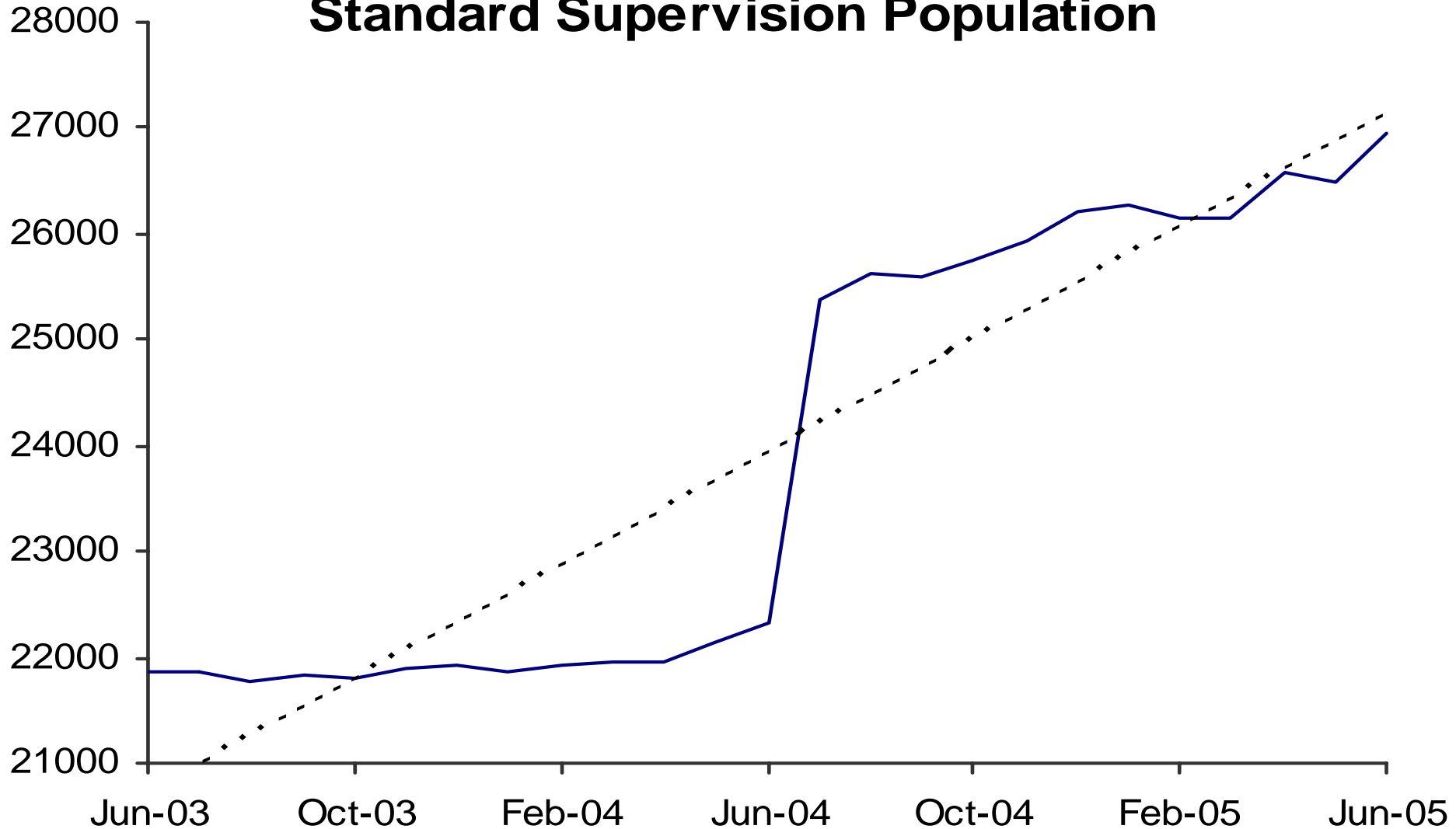
- Jul-Sep 2004
- Oct-Dec 2004
- Jan-Mar 2005
- Apr-Jun 2005



Status of Cases After 180 Days

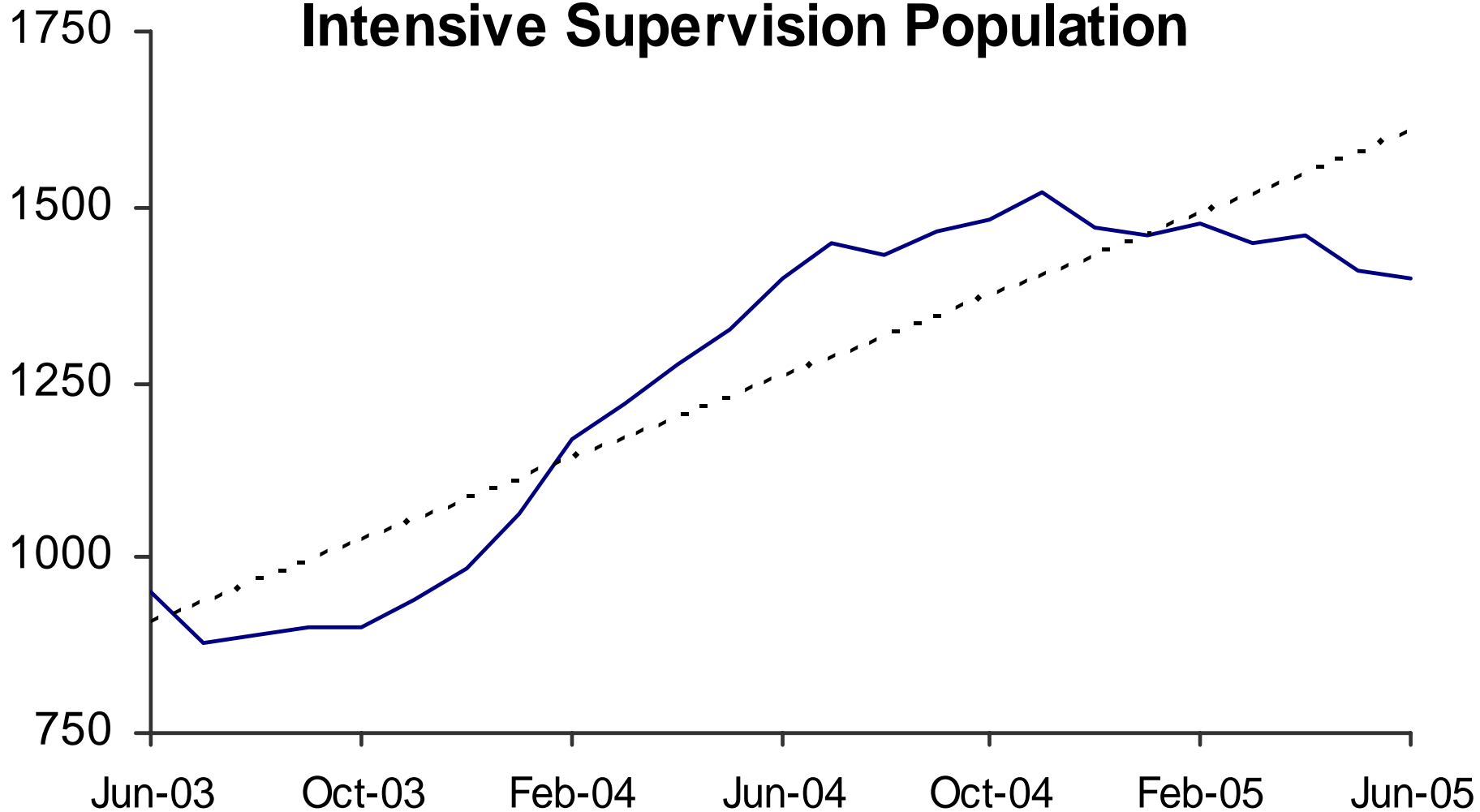


Adult Probation Standard Supervision Population

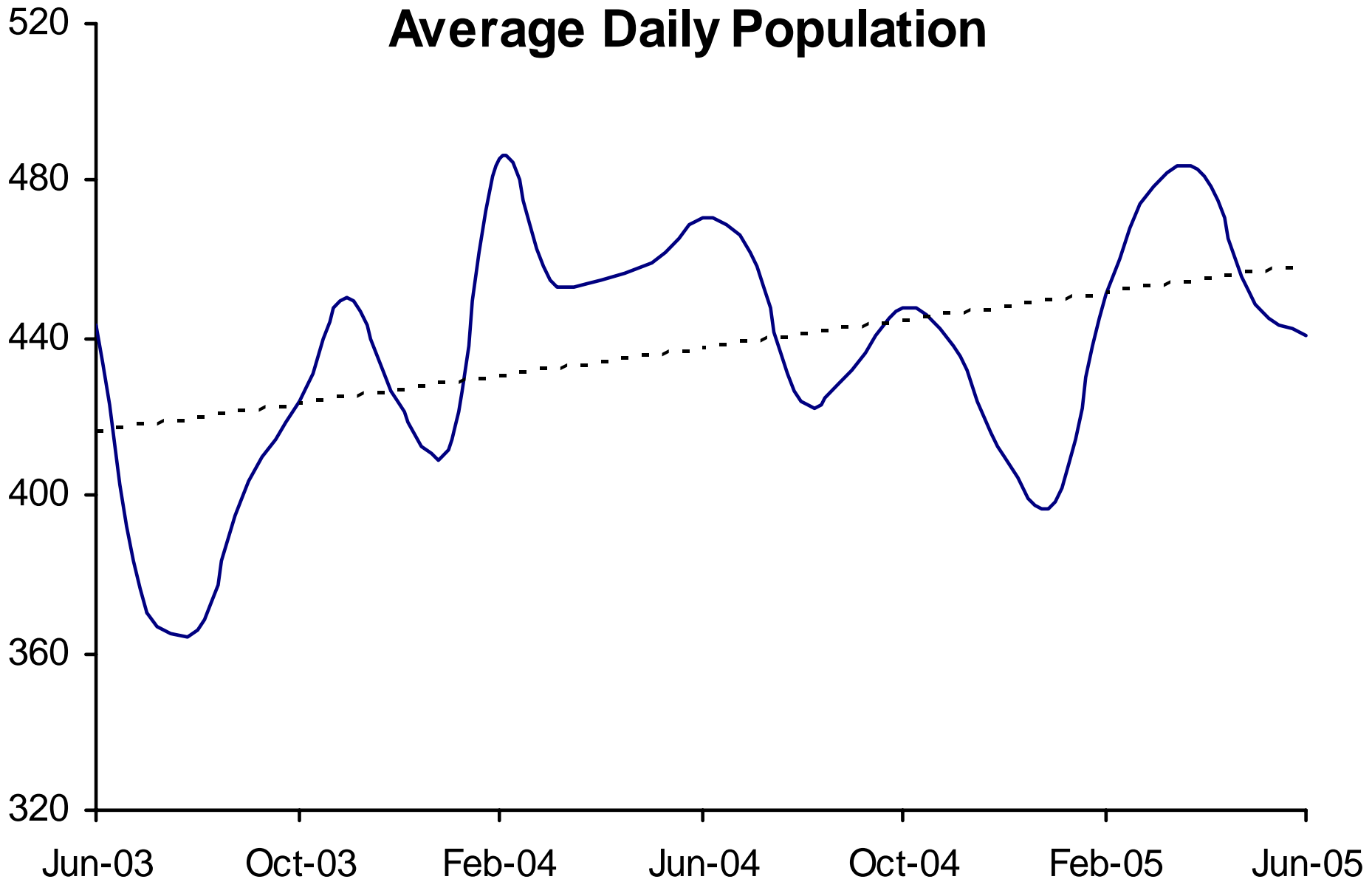


Interstate Compact and Report and Review caseloads are not included prior to July 2004. After July 2004, population as reported to the Board of Supervisors and JLBC is used.

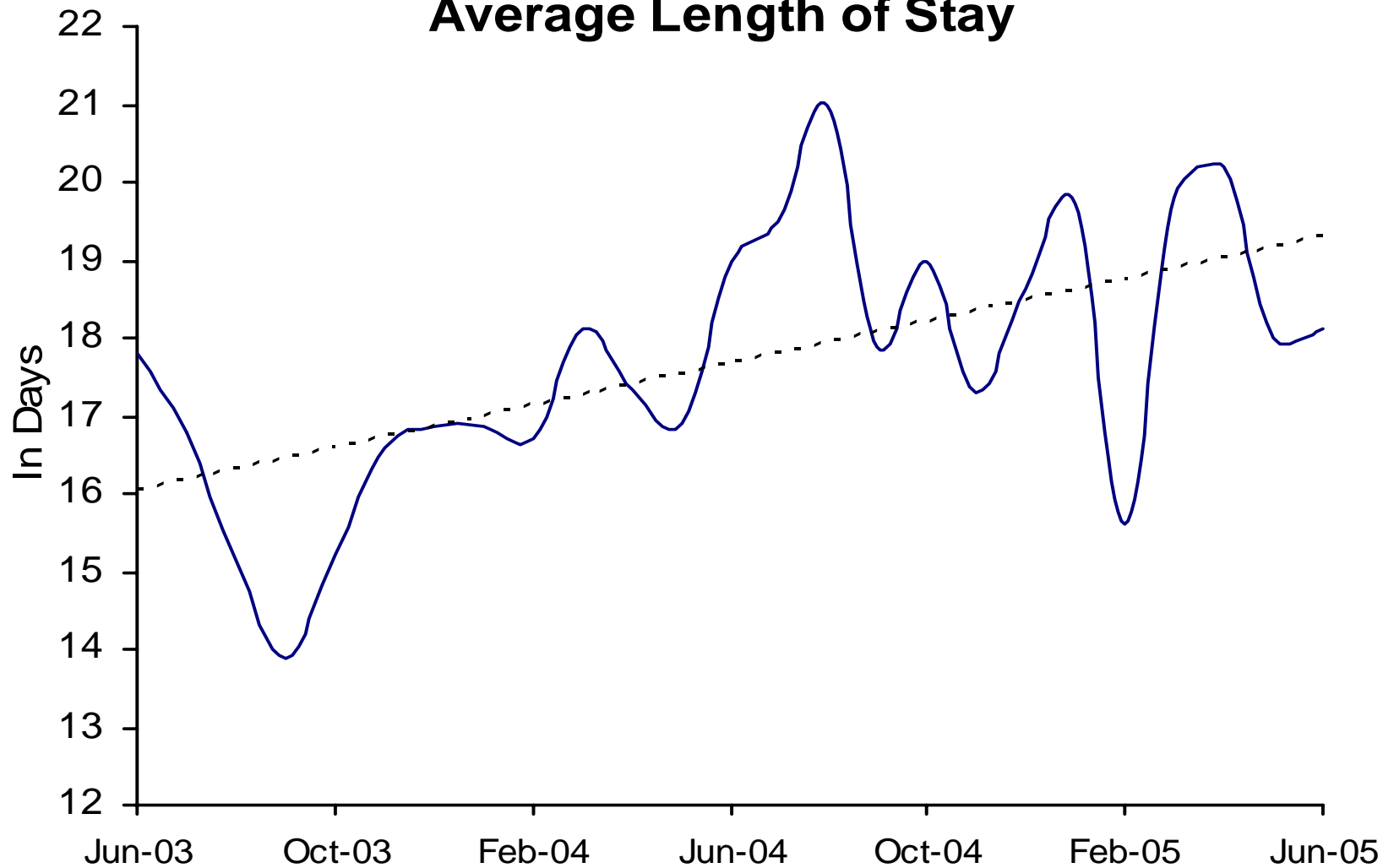
Adult Probation Intensive Supervision Population



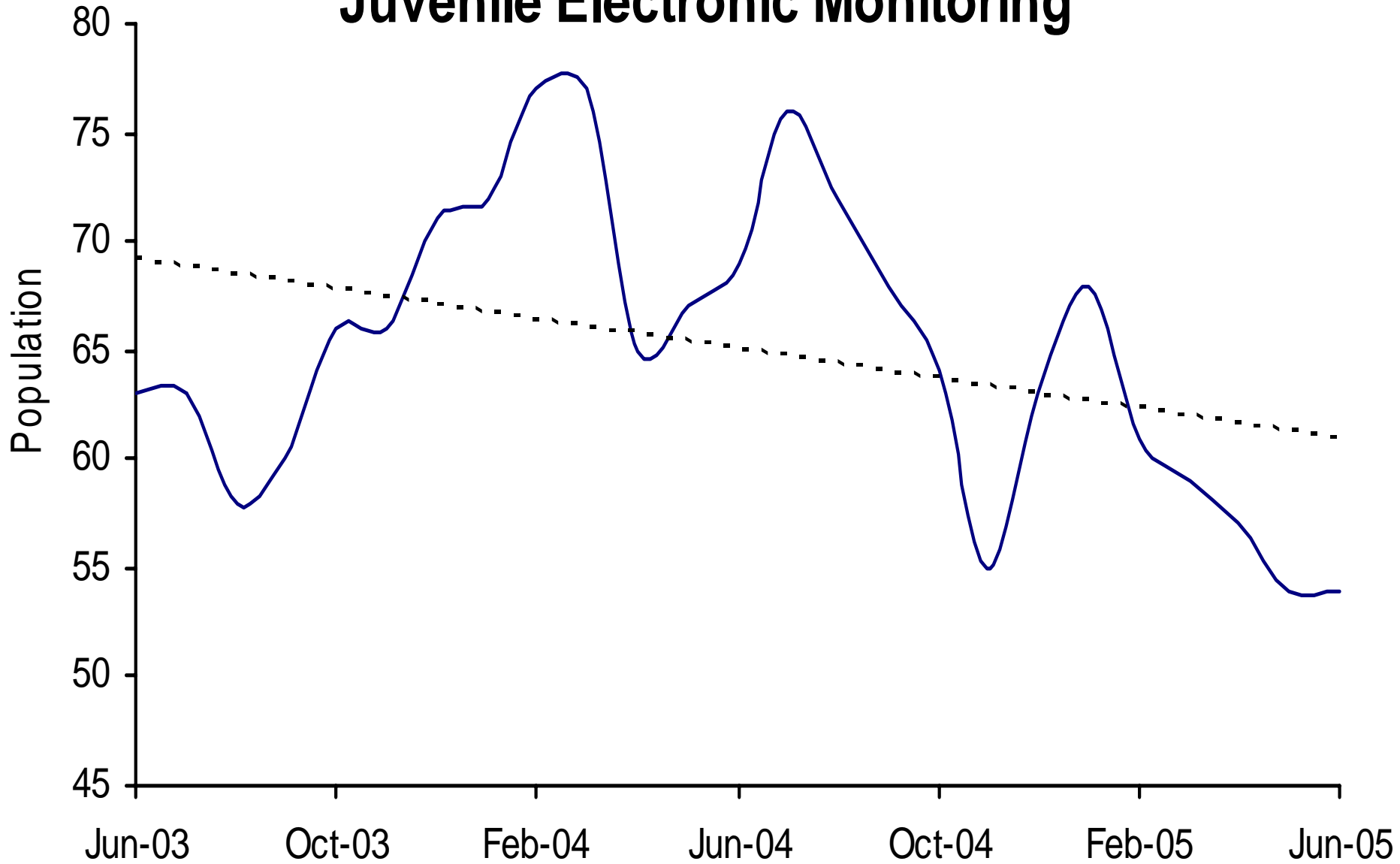
Juvenile Detention Average Daily Population



Juvenile Detention Average Length of Stay



Juvenile Electronic Monitoring



Juvenile Home Detention

