



Maricopa County

Criminal Justice System

Monthly Performance Report for June 2006

Monthly Averages						
	FY 2002	FY 2003	FY 2004	FY 2005	FY 2006	June 2006
Sheriff's Office						
Bookings	9,641	9,875	10,176	9,975	10,459	10,755
Average Daily Population	7,557	8,044	8,657	9,054	9,733	9,419
Avg Length of Stay (in days)	23.8	24.4	26.0	27.7	28.4	26.4
Superior Court						
Filings	2,515	2,904	3,062	2,996	3,248	3,576
Terminations	2,367	2,330	2,612	2,758	2,984	3,072
Clearance Rate	94%	80%	85%	93.0%	92.1%	85.9%
Active Pending Inventory	7,419	8,123	9,106	10,002	10,856	10,774
Trials Completed	61	59	42	51	68	55
Trial Rate	2.4%	2%	1.4%	1.7%	2.1%	1.5%
Adult Probation						
Pretrial General Supervision	609	700	990	978	775	816
Pretrial Intensive Supervision	356	331	657	816	1,077	1,089
Pretrial Electronic Monitoring	78	97	153	164	190	206
Standard Probation Supervision	24,448	25,400	25,055	26,091	27,896	29,323
Intensive Probation Supervision	1,564	1,267	1,078	1,456	1,321	1,308
Juvenile Detention and Probation						
Avg Daily Detention Pop	407	401	431	443	433	431
Avg Length of Stay (in days)	14.7	15.1	16.6	18.7	18.5	20.7
Standard Prob.	4,726	4,387	4,232	4,108	4,055	4,230
Intensive Prob.	666	659	518	547	527	530

A criminal justice system-wide goal is to enhance the utility and timeliness of management information on case processing, in an effort to help agencies effectively address current events. An interagency committee of McJustice meets regularly to accomplish this and develop this report. **Input from readers is welcomed.** Please contact Amy Rex at rexa@mail.maricopa.gov or 602-506-1310.

Criminal Justice System News

Adult Incarceration: Bookings decreased in June, from 11,096 to 10,755. ADP also decreased, from 9,449 to 9,419. FY06 average monthly bookings were nearly 500 over FY05 bookings, while FY06 average monthly ADP was 679 over FY05. Sentenced and agency hold populations were down. The holds population was the lowest since January 2005. Pretrial population increased from 6,103 to 6,144. Overall ALOS was nearly unchanged.

All ALOS measures decreased. ALOS for agency holds fell by 3.6 days; for pretrial by 1.44 days; and for sentenced by 1.46 days. For the pretrial population, felony ALOS decreased from 12.3 days to 9.6 days, while misdemeanor ALOS decreased from 3.2 days to 3.1 days. The % of Dept of Correction holds was 70% in June, the lowest percentage since August 2005 (69%).

Filings & Case Processing: Criminal filings and terminations decreased in June, filings from 3,651 to 3,576 and terminations from 3,556 to 3,072. Both measures increased by almost the same % from FY05 to FY06, filings by 8.4% and terminations by 8.2%. The FY06 termination rate was almost a percentage lower than the rate in FY05. The active pending case inventory increased from 10,615 to 10,774; the FY06 average (10,856) was higher than FY05 (10,002). June filings into the RCC decreased while June EDC filings increased. FY06 RCC filings increased 11.6% over FY05, while FY06 EDC filings increased 2.9% over FY05. The FY06 trials completed was the highest seen in the past several fiscal years, with a trial rate of 2.1% that is the highest since FY02 (2.4%).

Adult Probation:

All levels of pretrial supervision increased from May to June. Levels of FY06 pretrial general supervision are down from FY05 numbers, while FY06 pretrial intensive and EM increased over FY05.

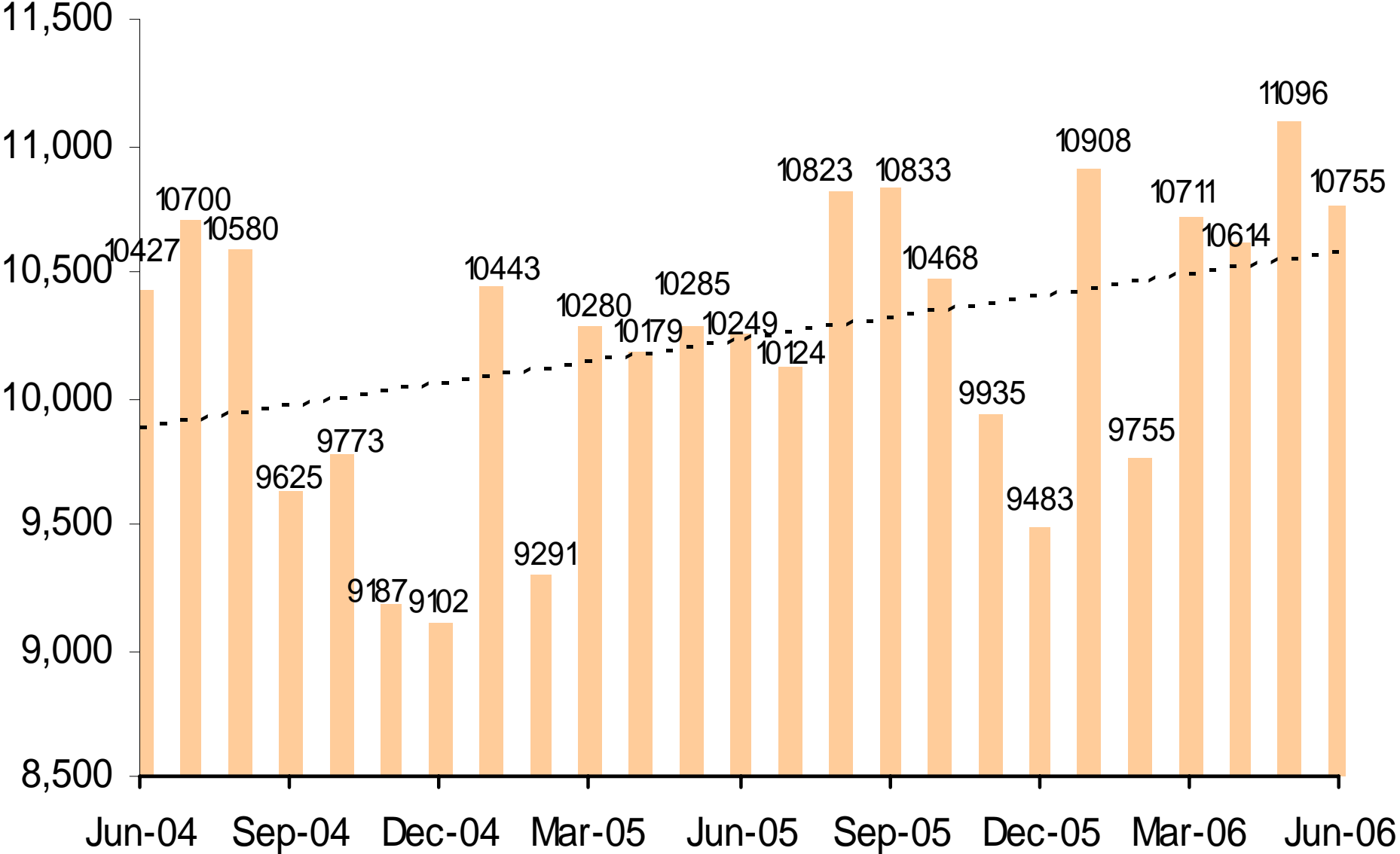
Levels of standard and intensive probation supervision increased from May to June. While FY06 levels of standard probation supervision increased over FY05 levels, FY06 levels of intensive decreased from FY05 levels.

Juvenile Detention and Probation:

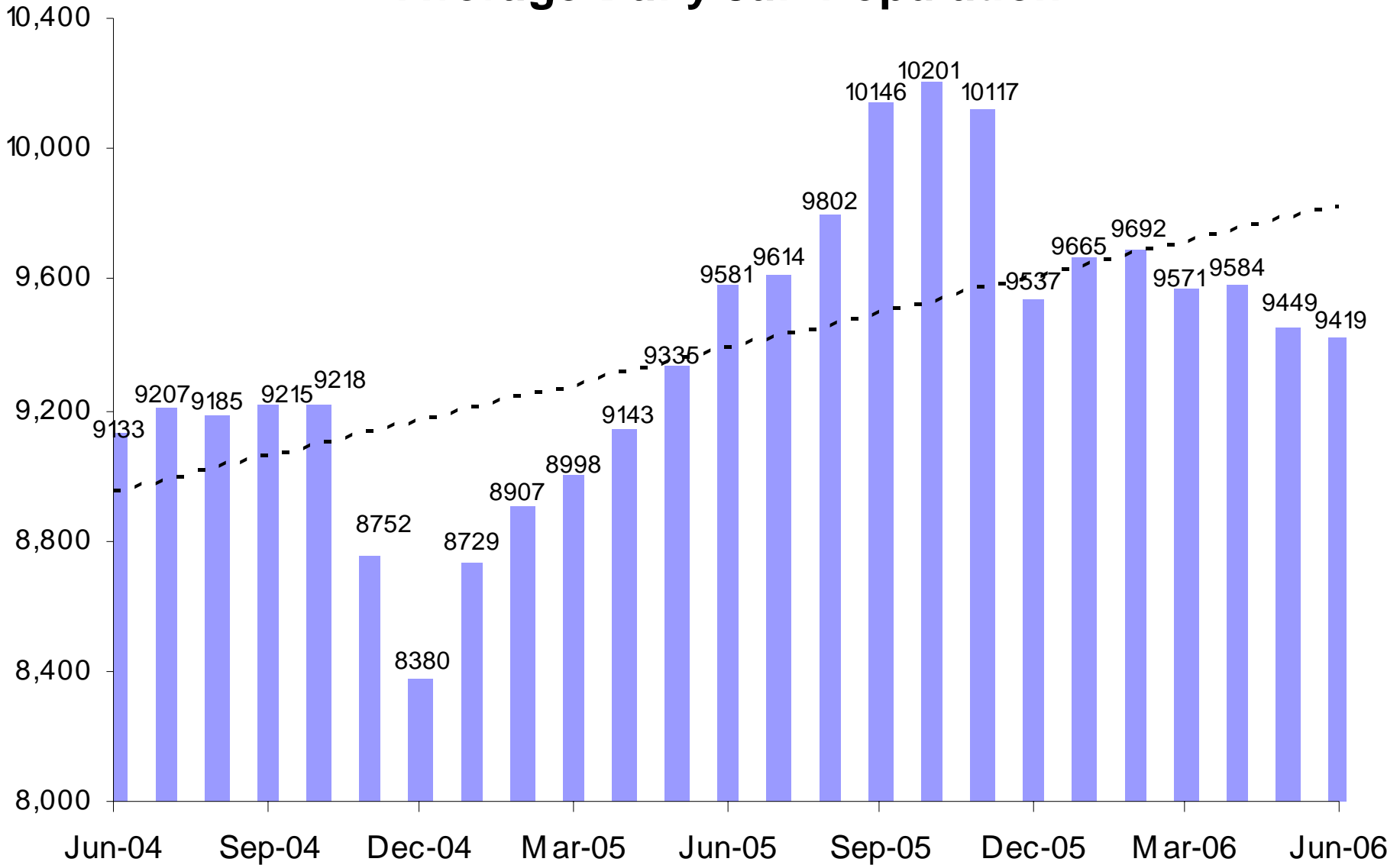
The Average Daily Detention Population decreased from 460 in May to 431 in June. The FY06 ADP of 433 is lower than FY05's ADP of 443. ALOS increased from 17.3 to 20.7 days; this is the highest ALOS since August 2004 (21 days). FY06 and FY05 ALOS are nearly the same. Electronic monitoring increased by one. Home detention decreased from 275 to 257.

Levels of juvenile standard and intensive probation increased. Standard went from 4,165 to 4,230, while intensive went from 518 to 530. Both were lower in FY06 than in FY05.

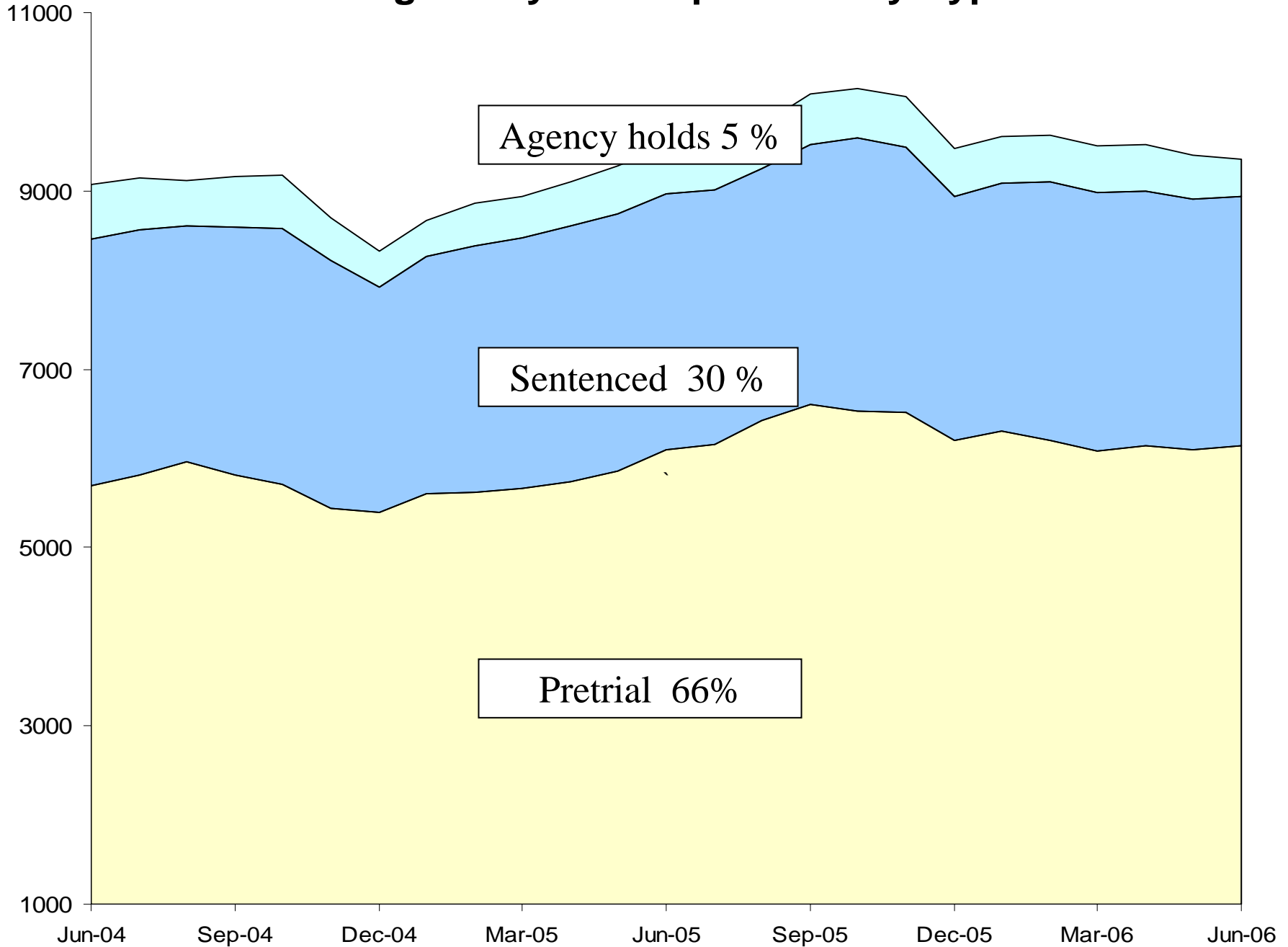
Jail Bookings



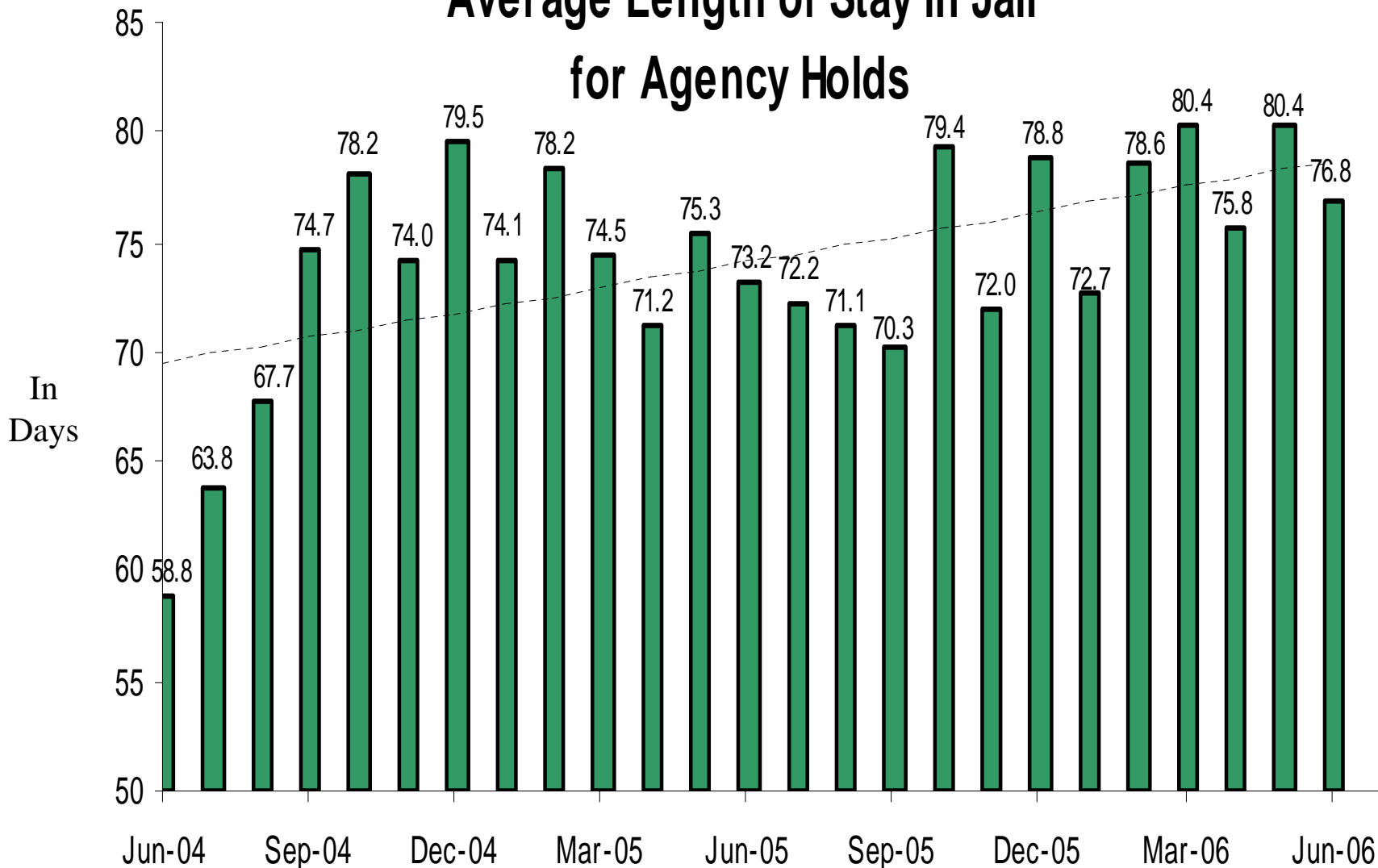
Average Daily Jail Population



Average Daily Jail Population by Type

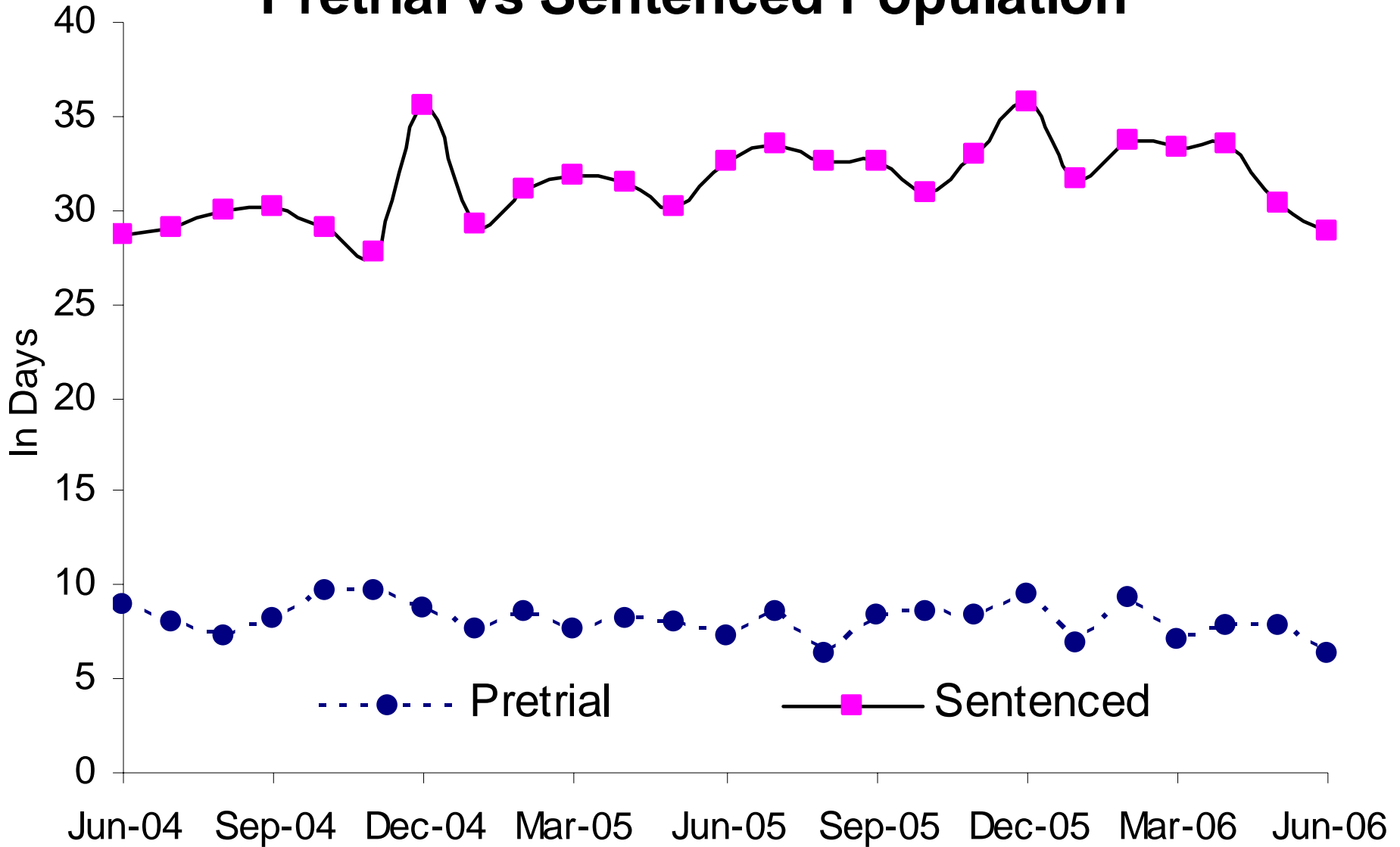


Average Length of Stay in Jail for Agency Holds

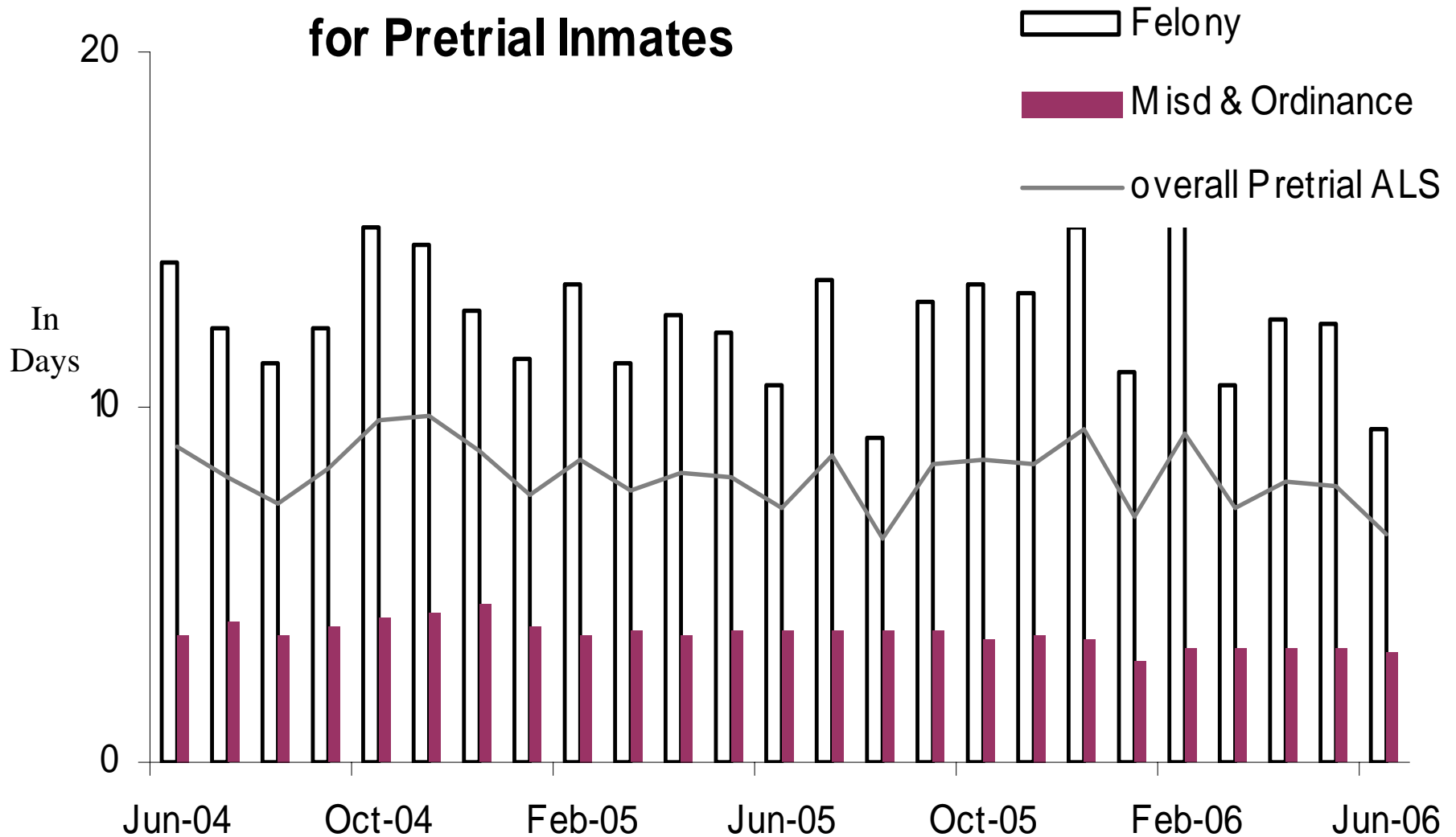


70% Dept of Corrections, 14% Federal agencies, 16% other

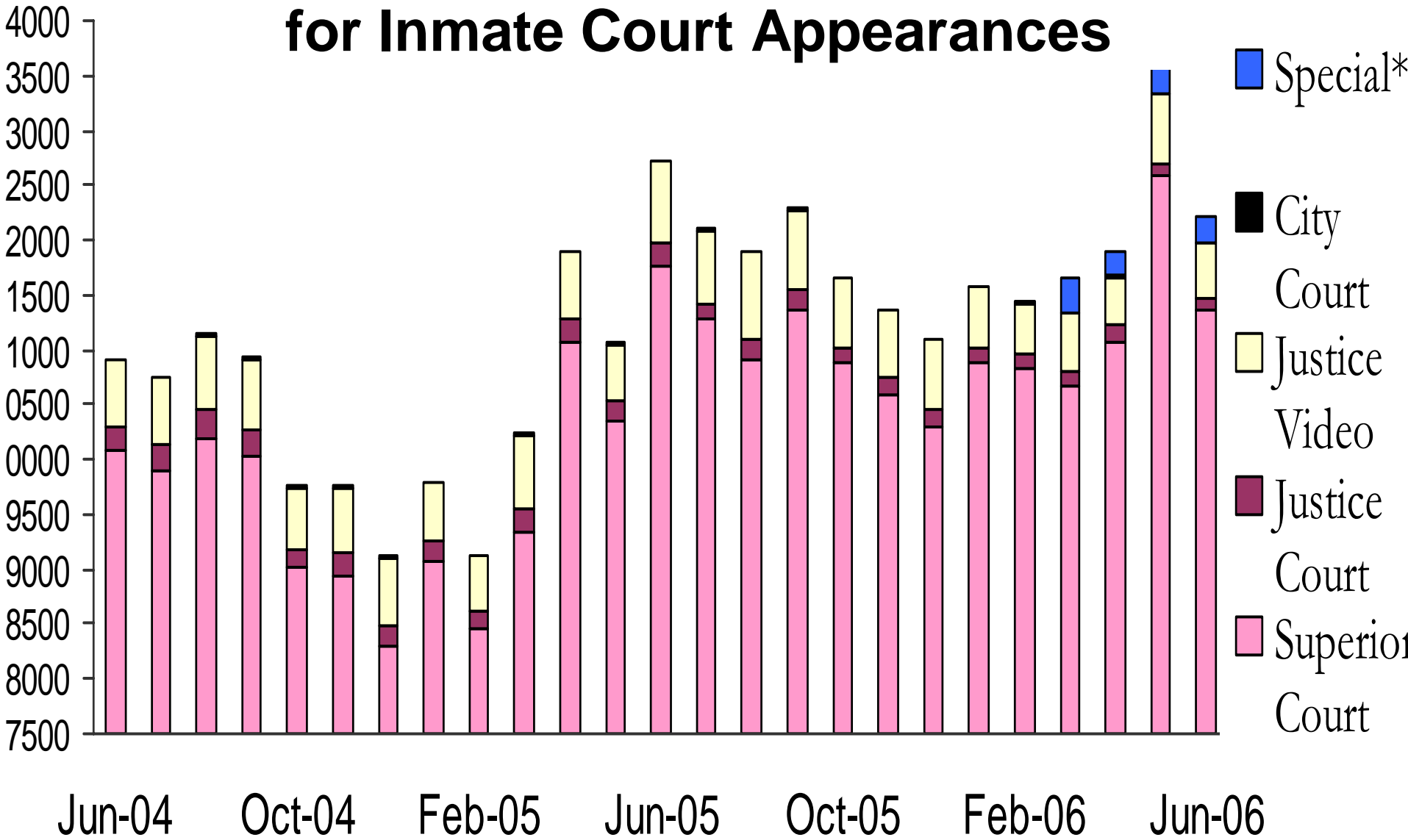
Average Length of Stay in Jail Pretrial vs Sentenced Population



Average Length of Stay in Jail for Pretrial Inmates



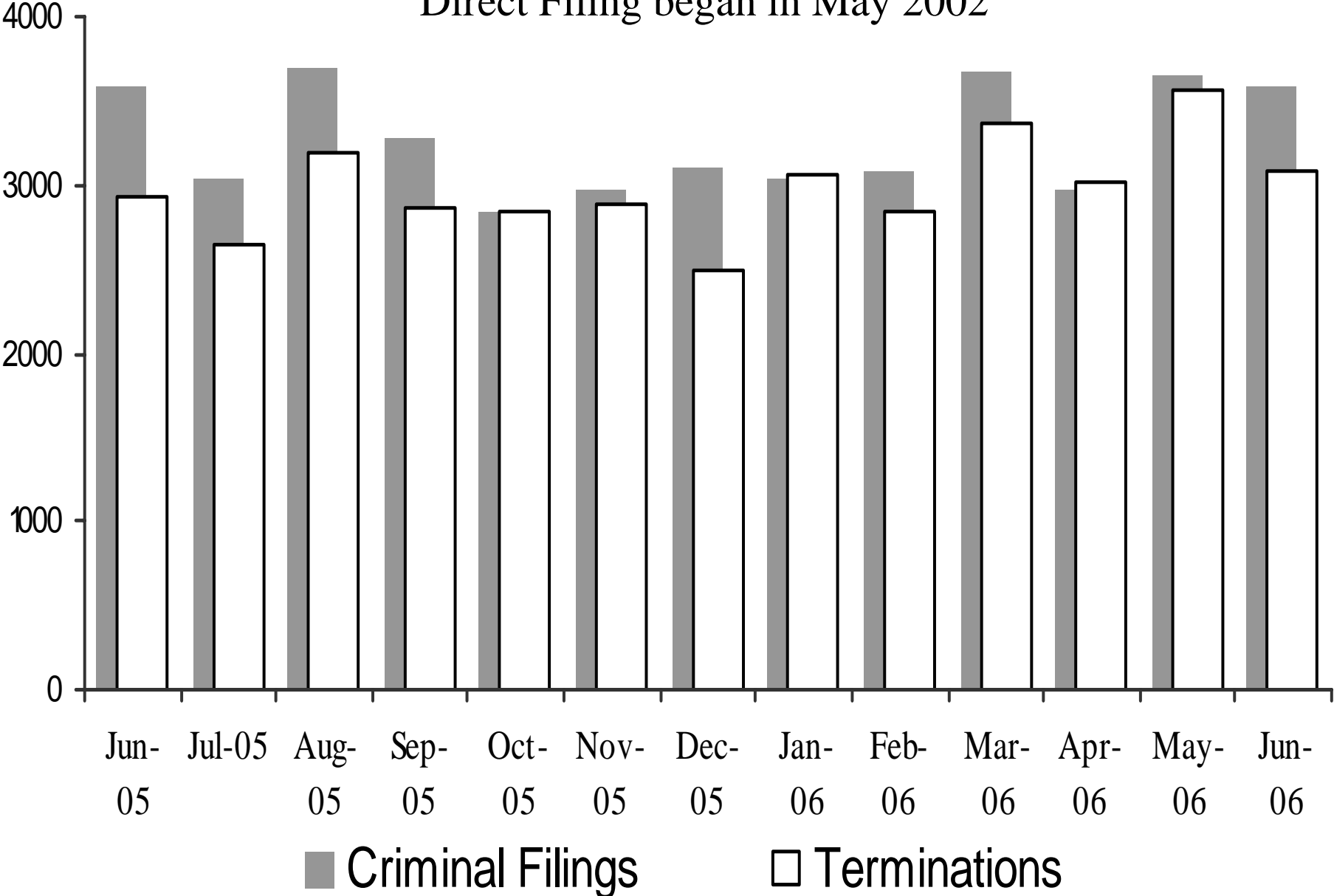
Sheriff's Office Transports for Inmate Court Appearances



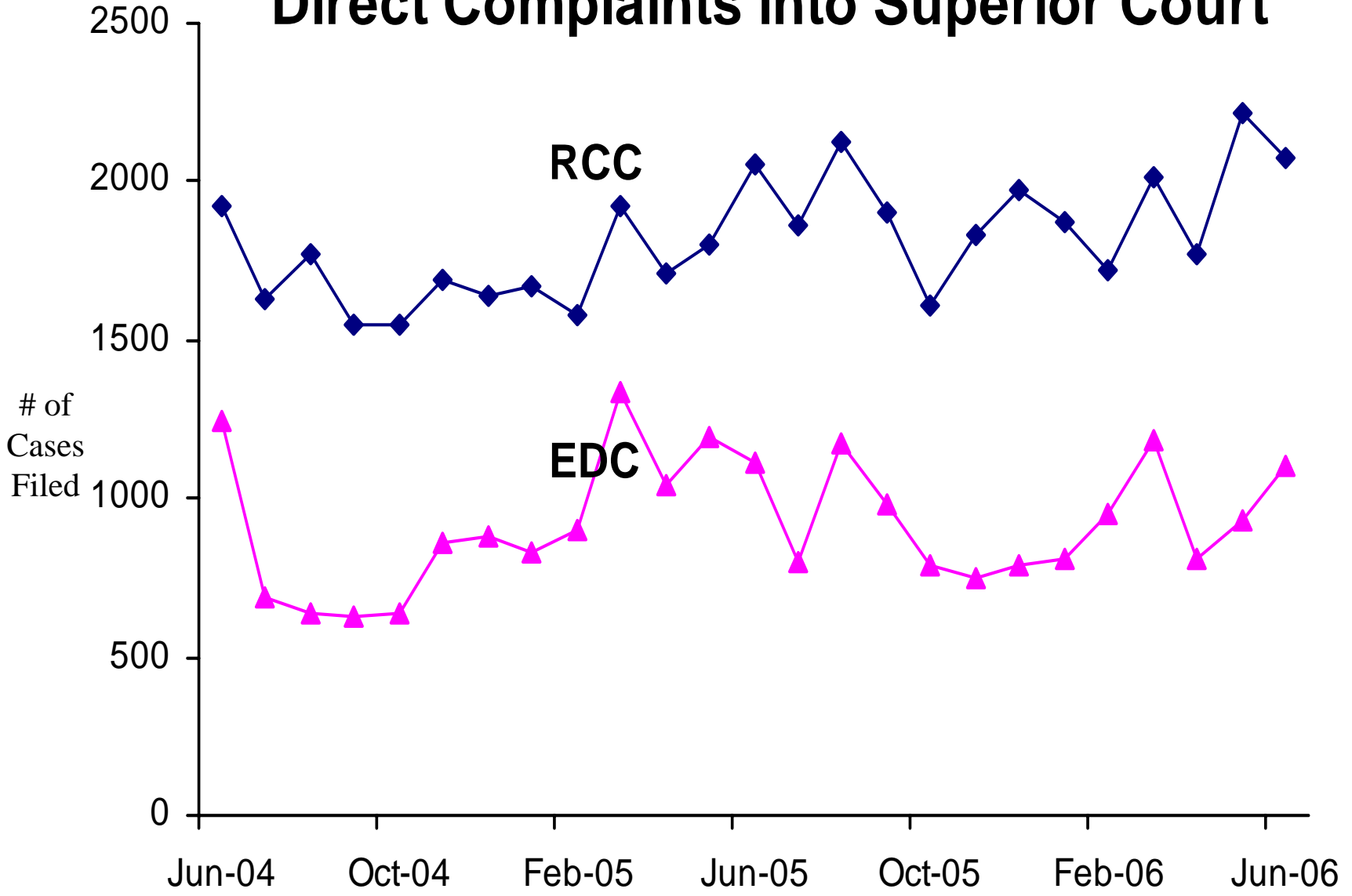
“Special” cases added in March 2006 include Downtown Remands, SEJD Remands, and SEJD Unscheduled.

Superior Court Filings and Terminations

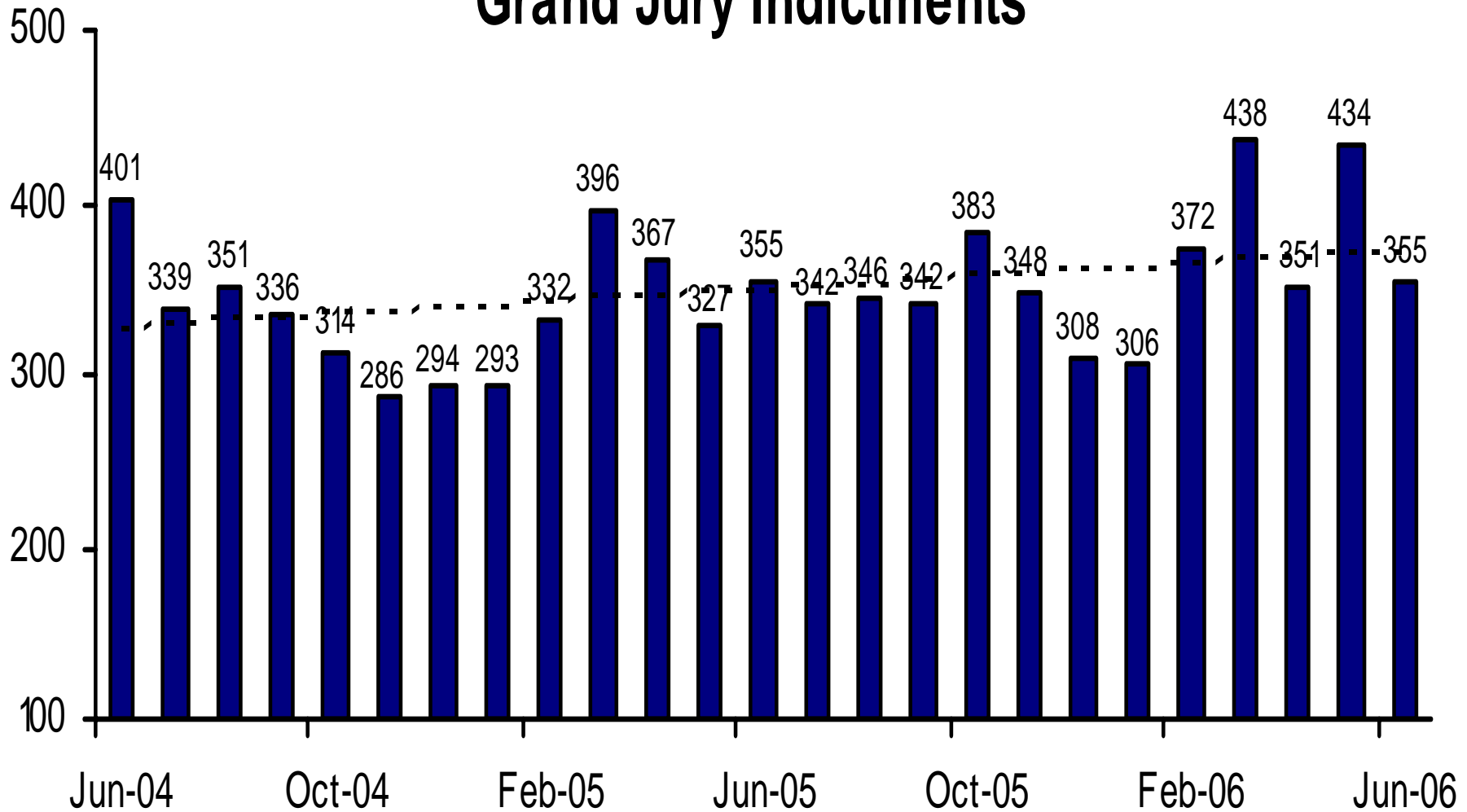
Direct Filing began in May 2002



Direct Complaints into Superior Court

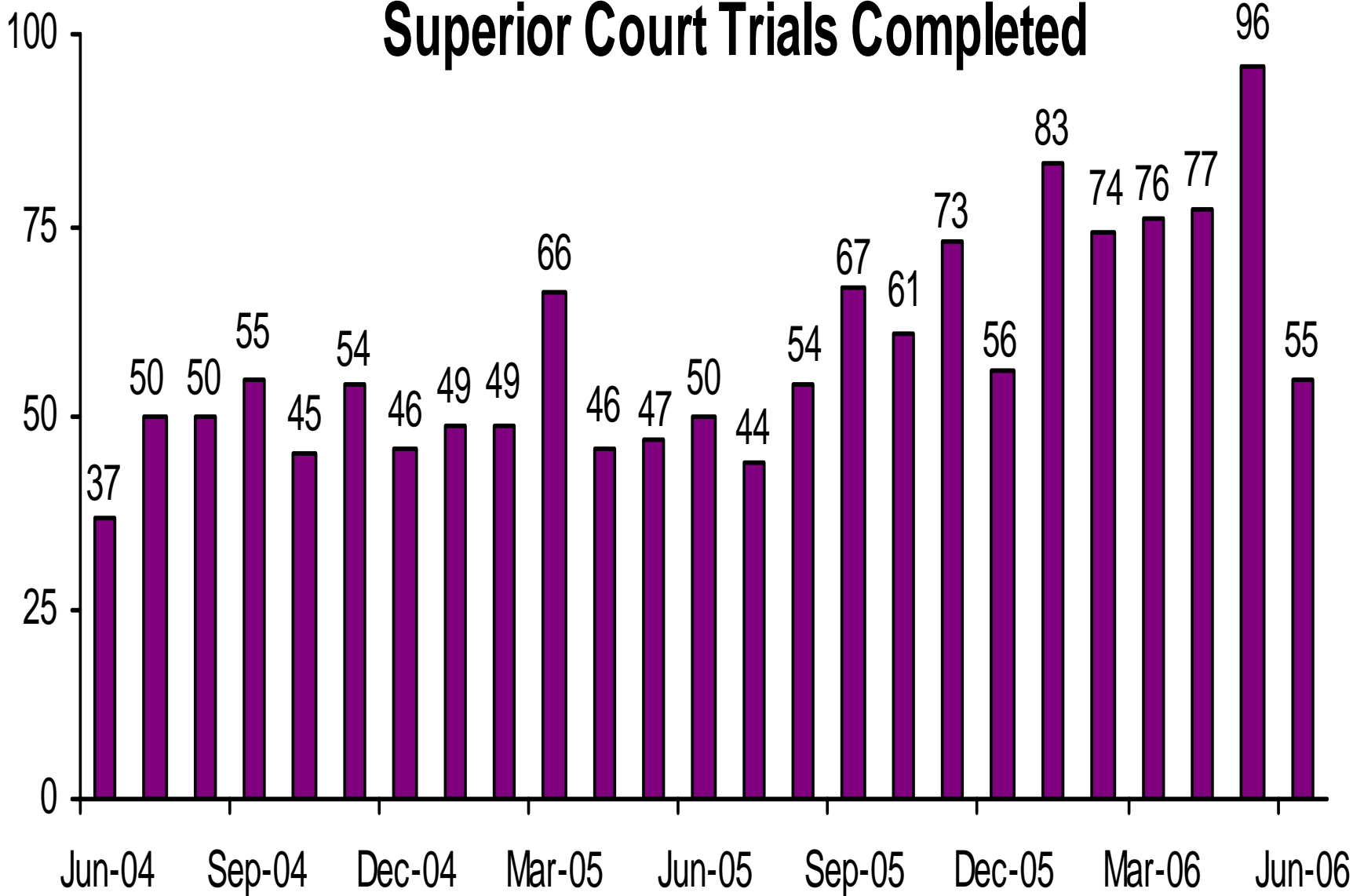


Grand Jury Indictments

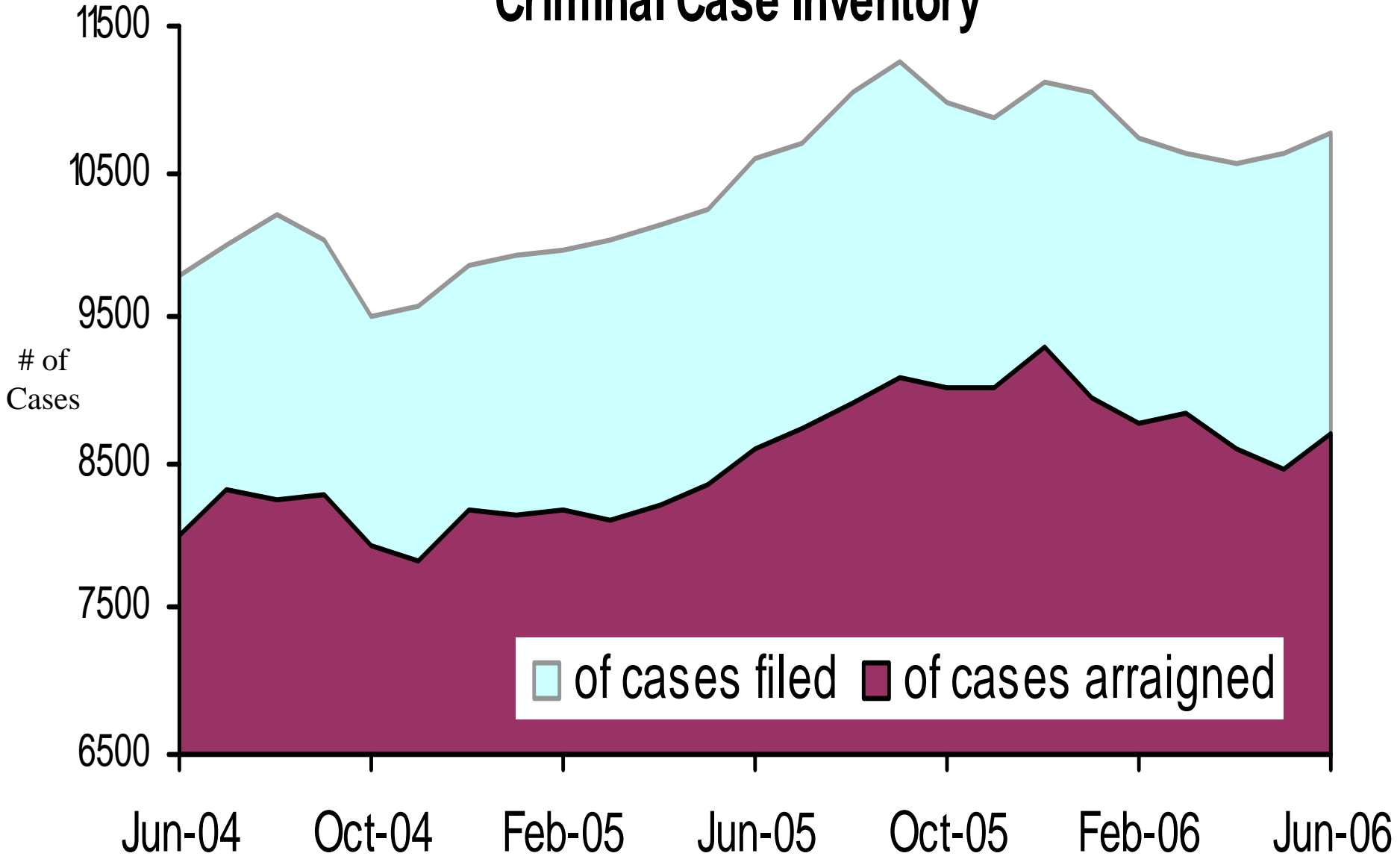


These numbers do not include notices of supervening indictments, non-EDC direct complaints, and juvenile direct complaints.

Superior Court Trials Completed



Active Pending Criminal Case Inventory

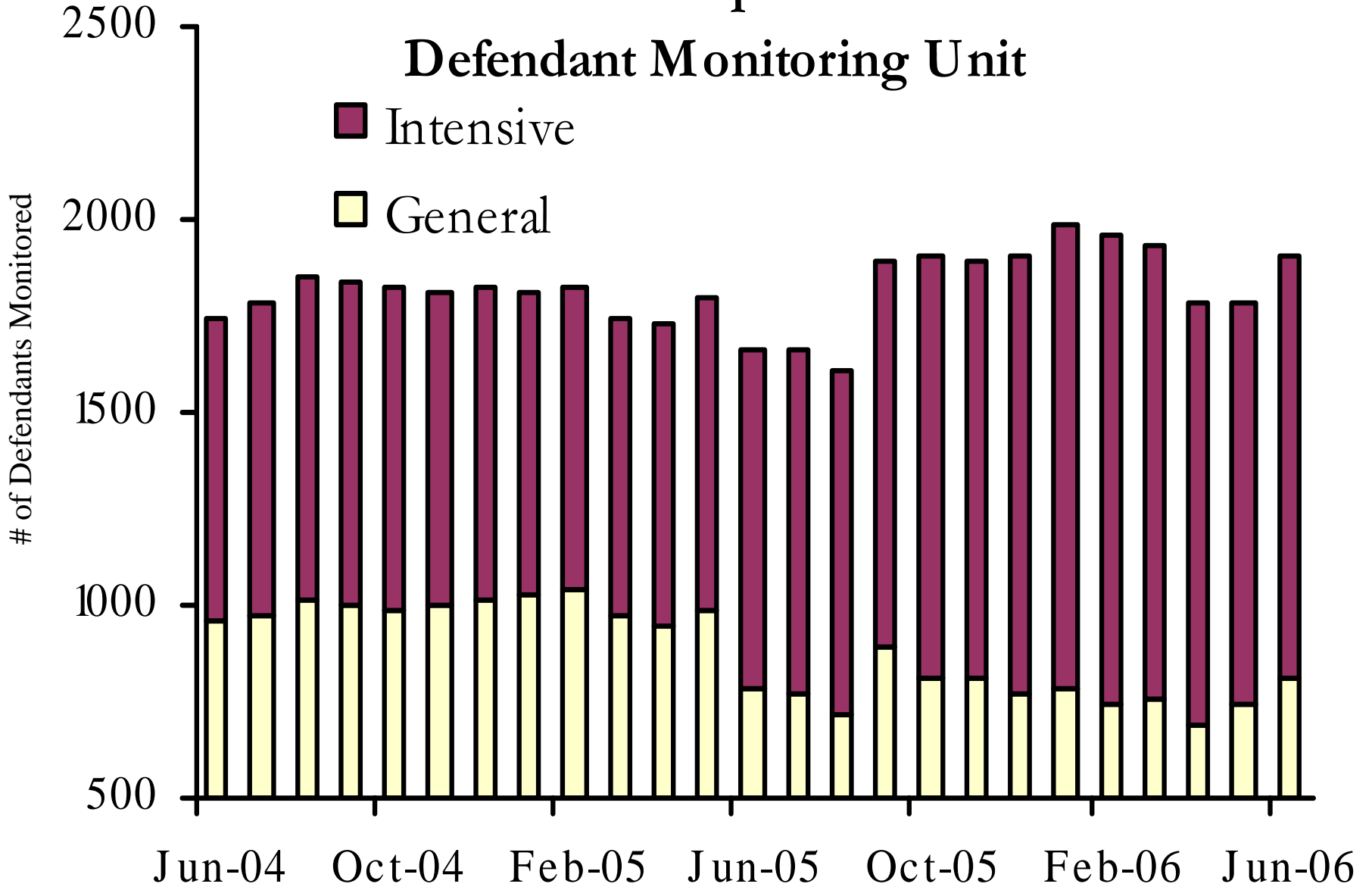


Pretrial Supervision

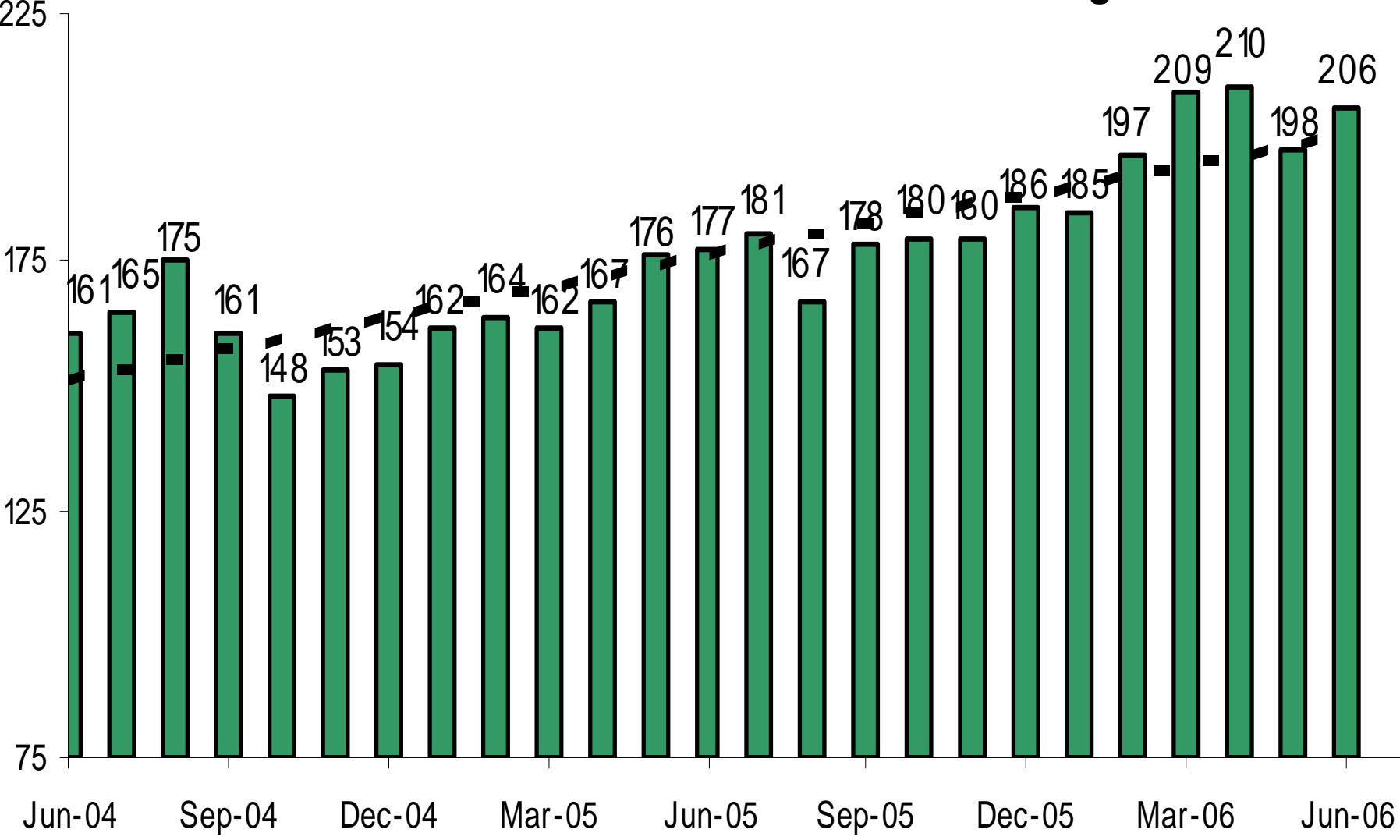
Defendant Monitoring Unit

Intensive

General



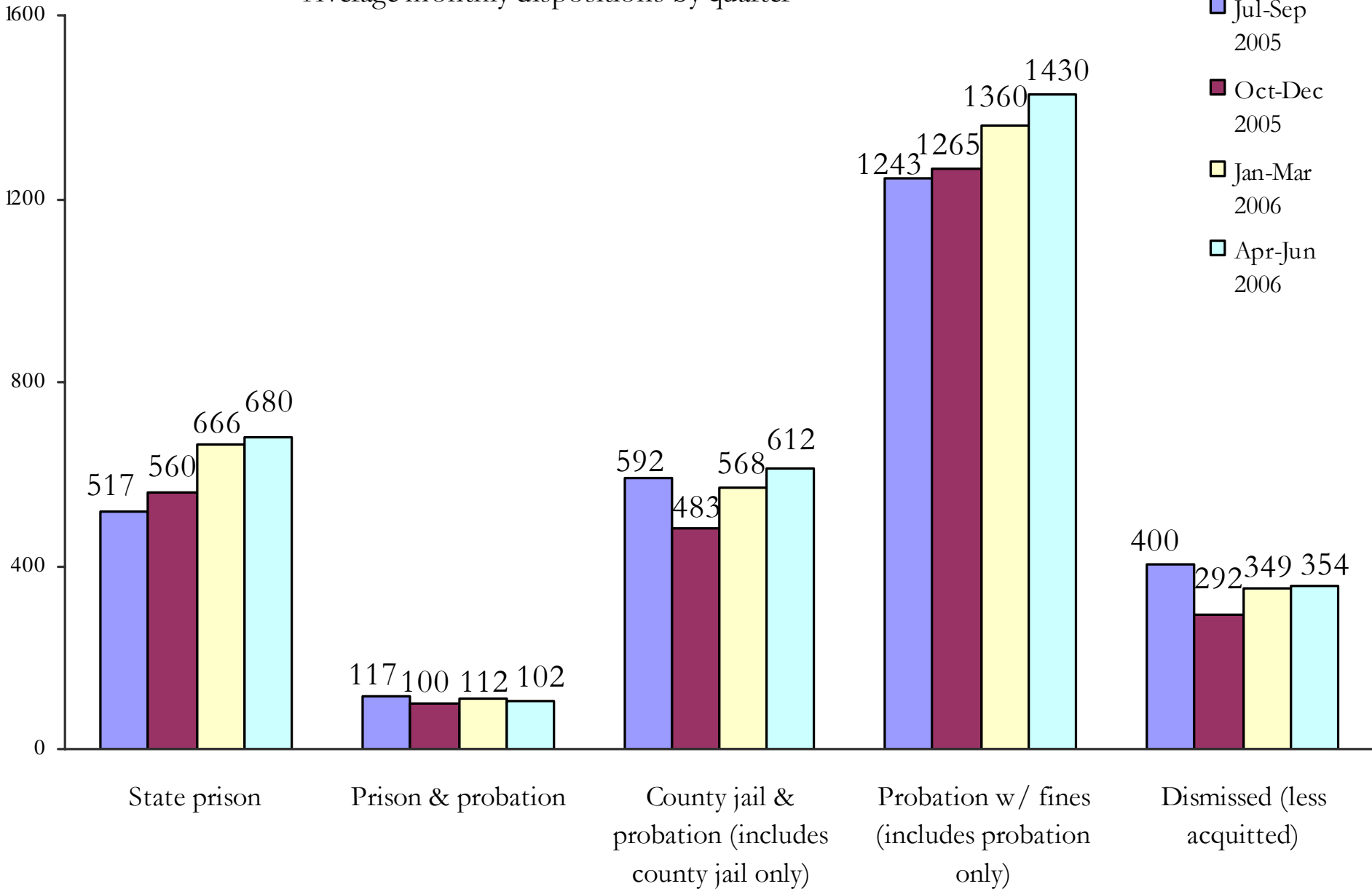
Pretrial Supervision Defendants on Electronic Monitoring



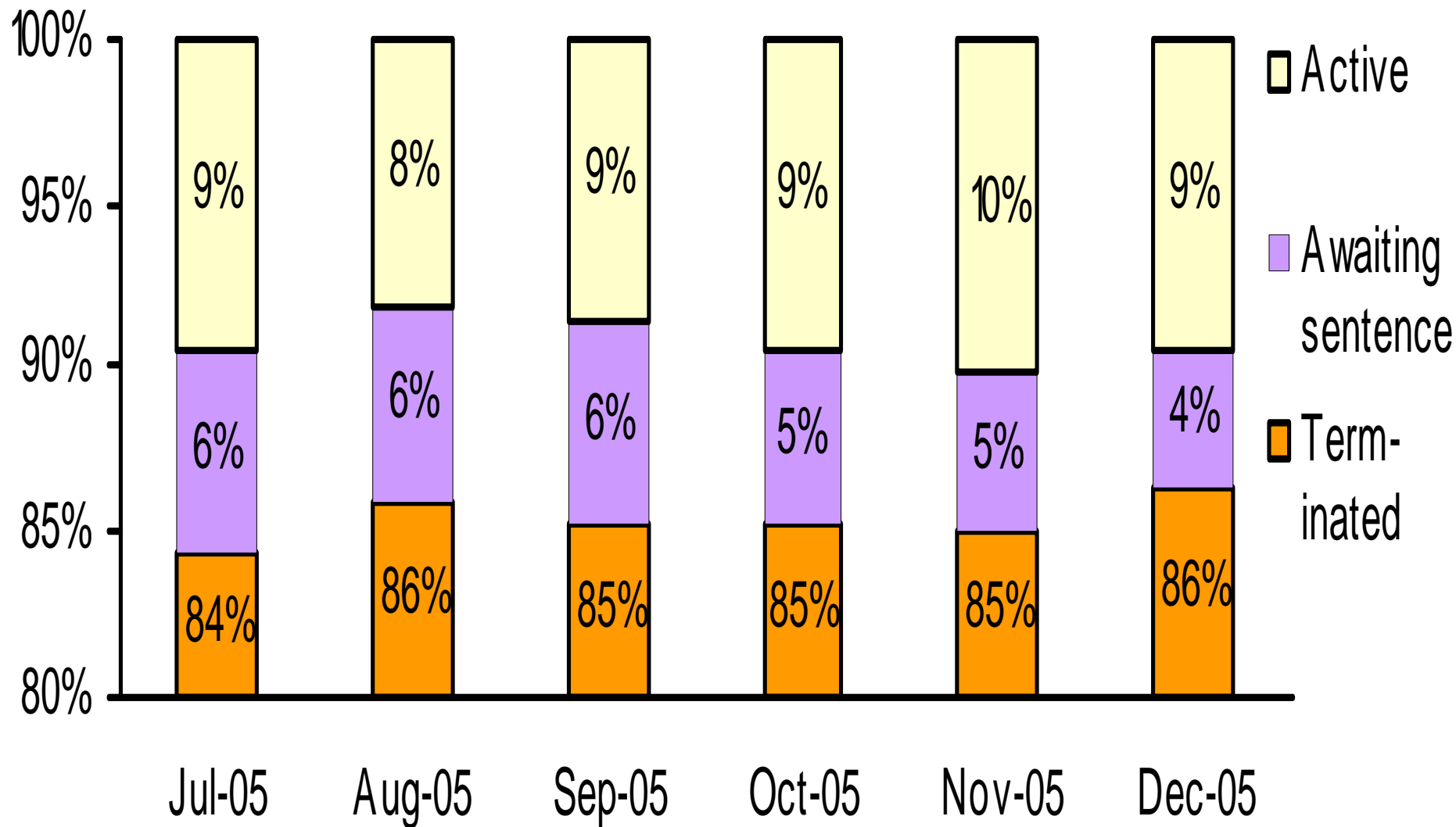
Disposition of Cases Terminated

Average monthly dispositions by quarter

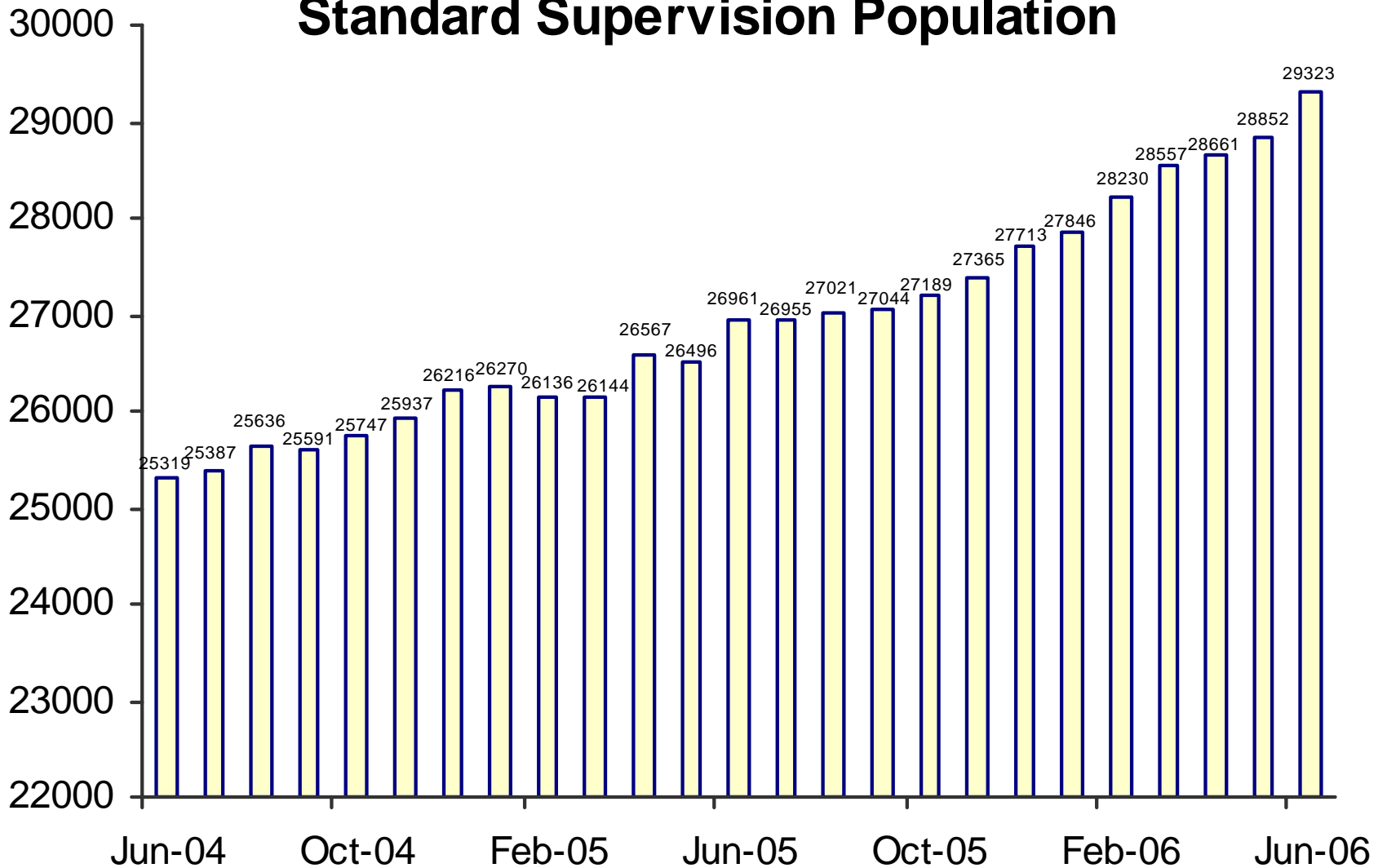
- Jul-Sep 2005
- Oct-Dec 2005
- Jan-Mar 2006
- Apr-Jun 2006



Status of Cases After 180 Days

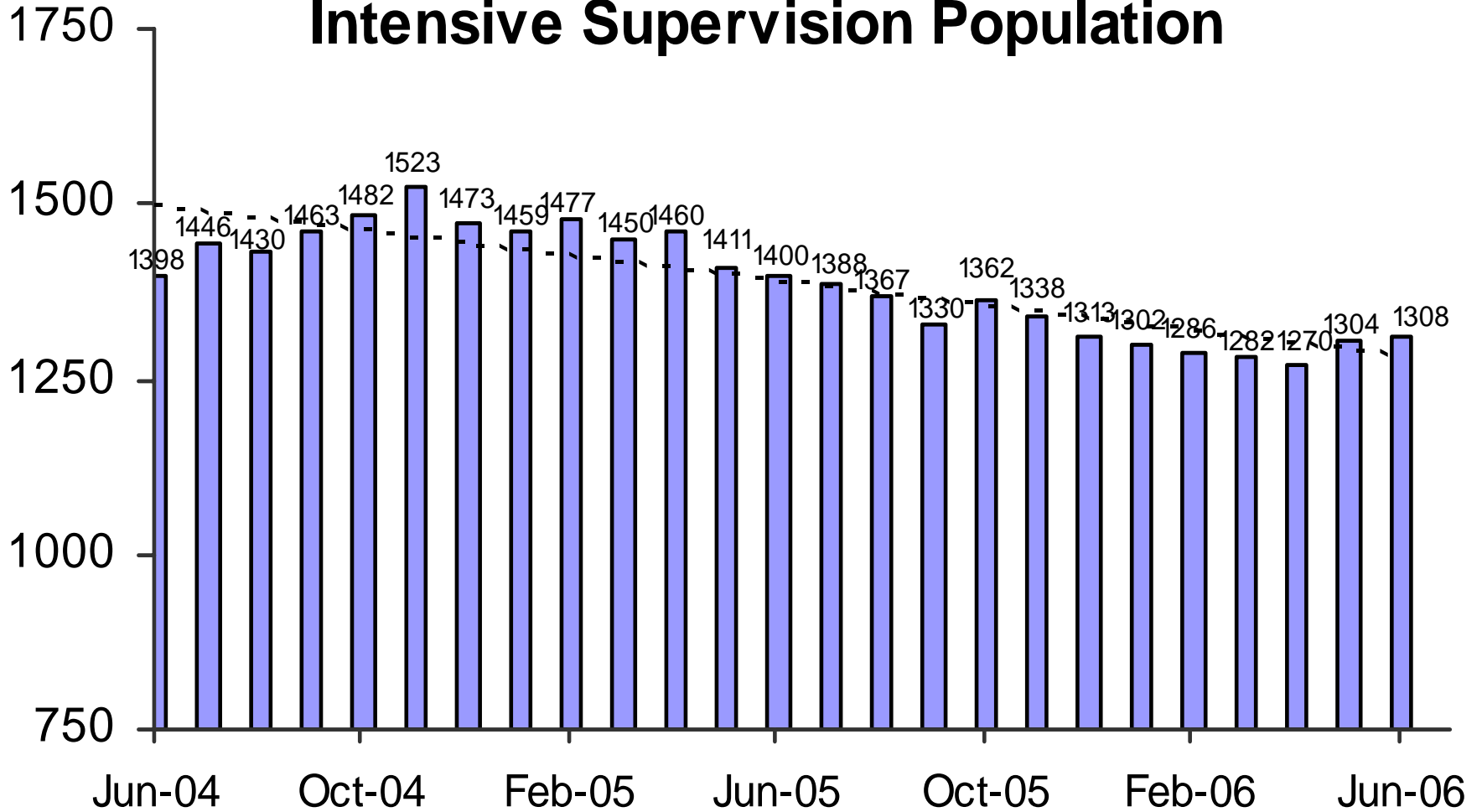


Adult Probation Standard Supervision Population

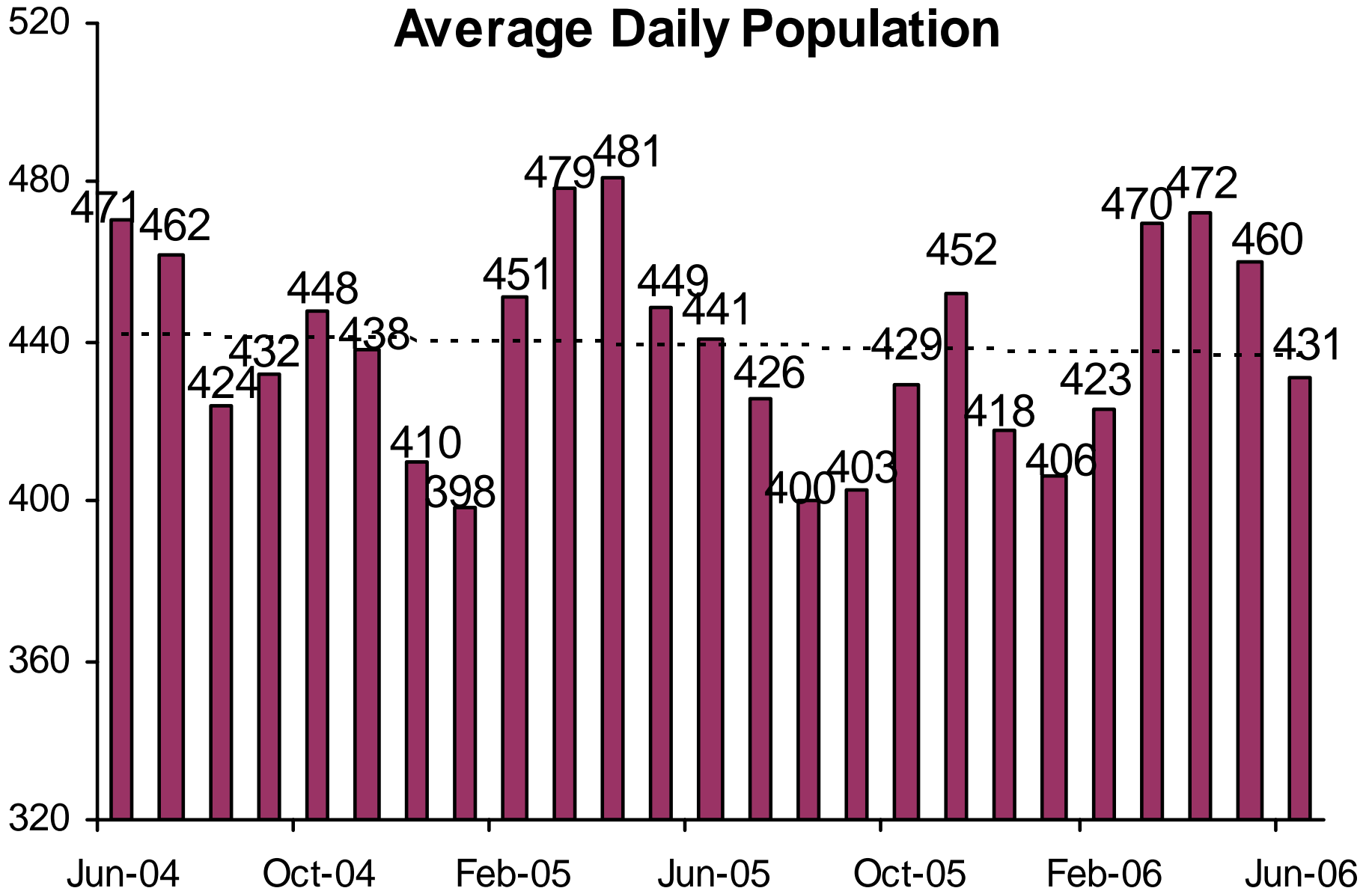


This population includes Interstate Compact and Report and Review caseloads, as reported to the Board of Supervisors and JLBC.

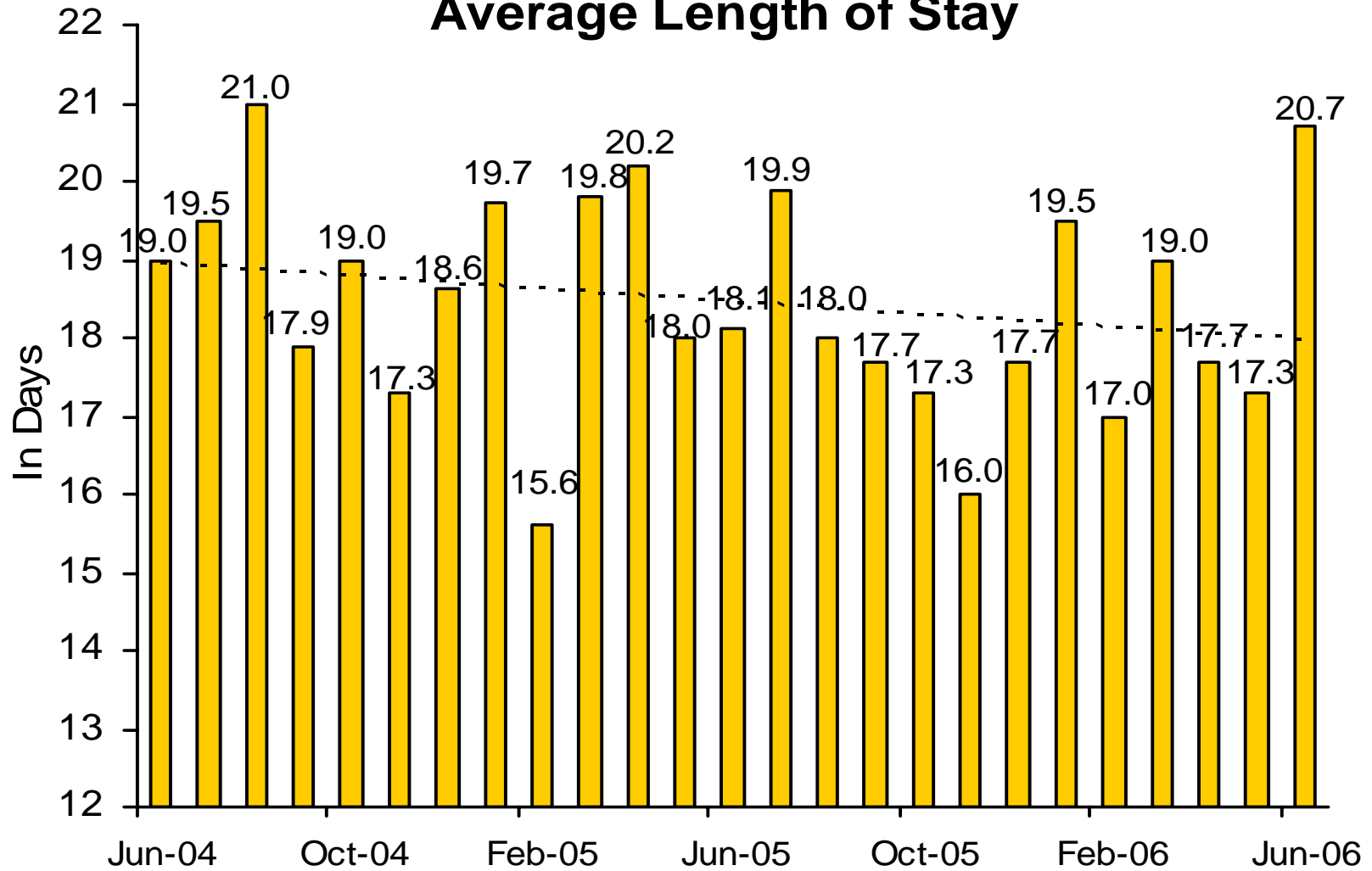
Adult Probation Intensive Supervision Population



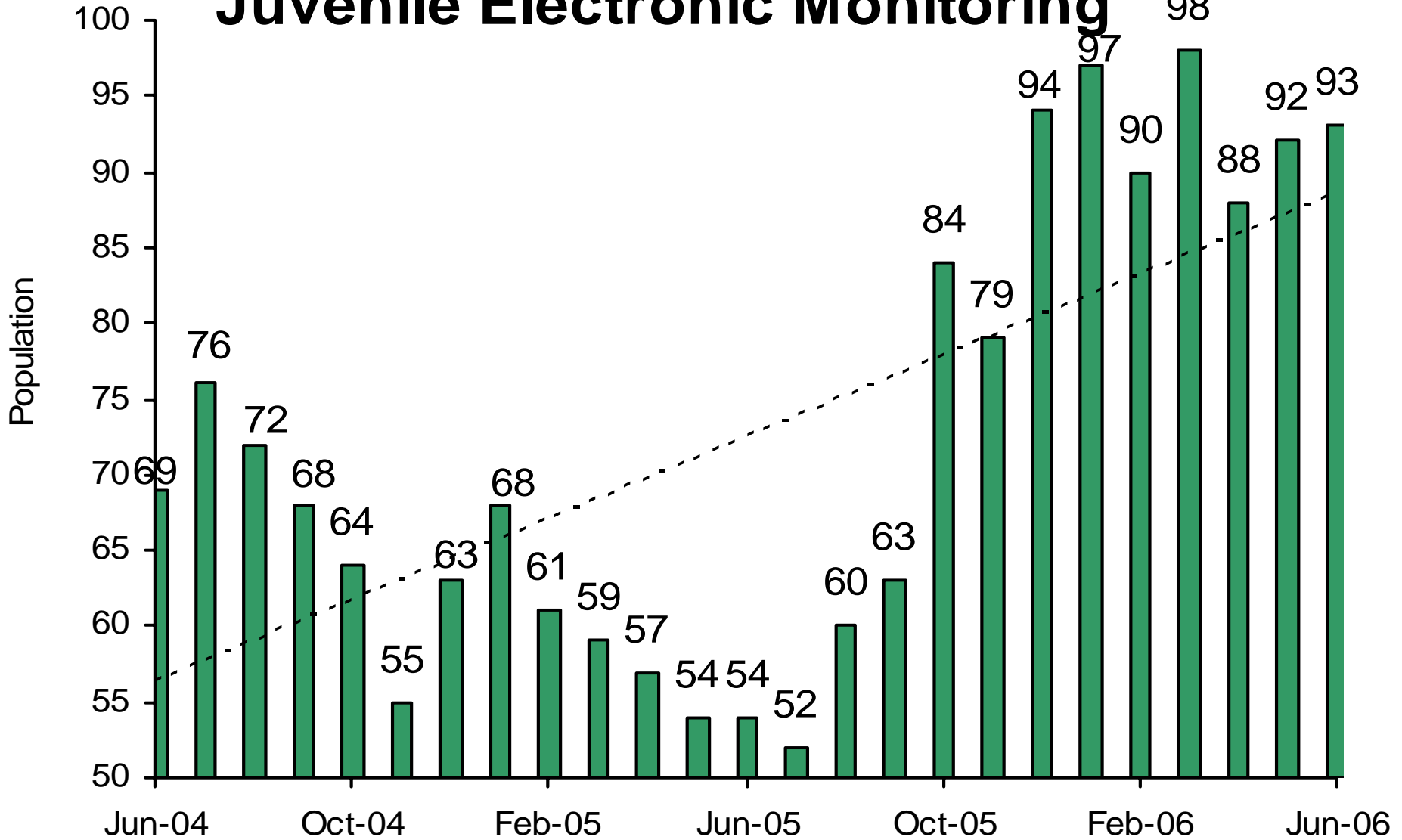
Juvenile Detention Average Daily Population



Juvenile Detention Average Length of Stay

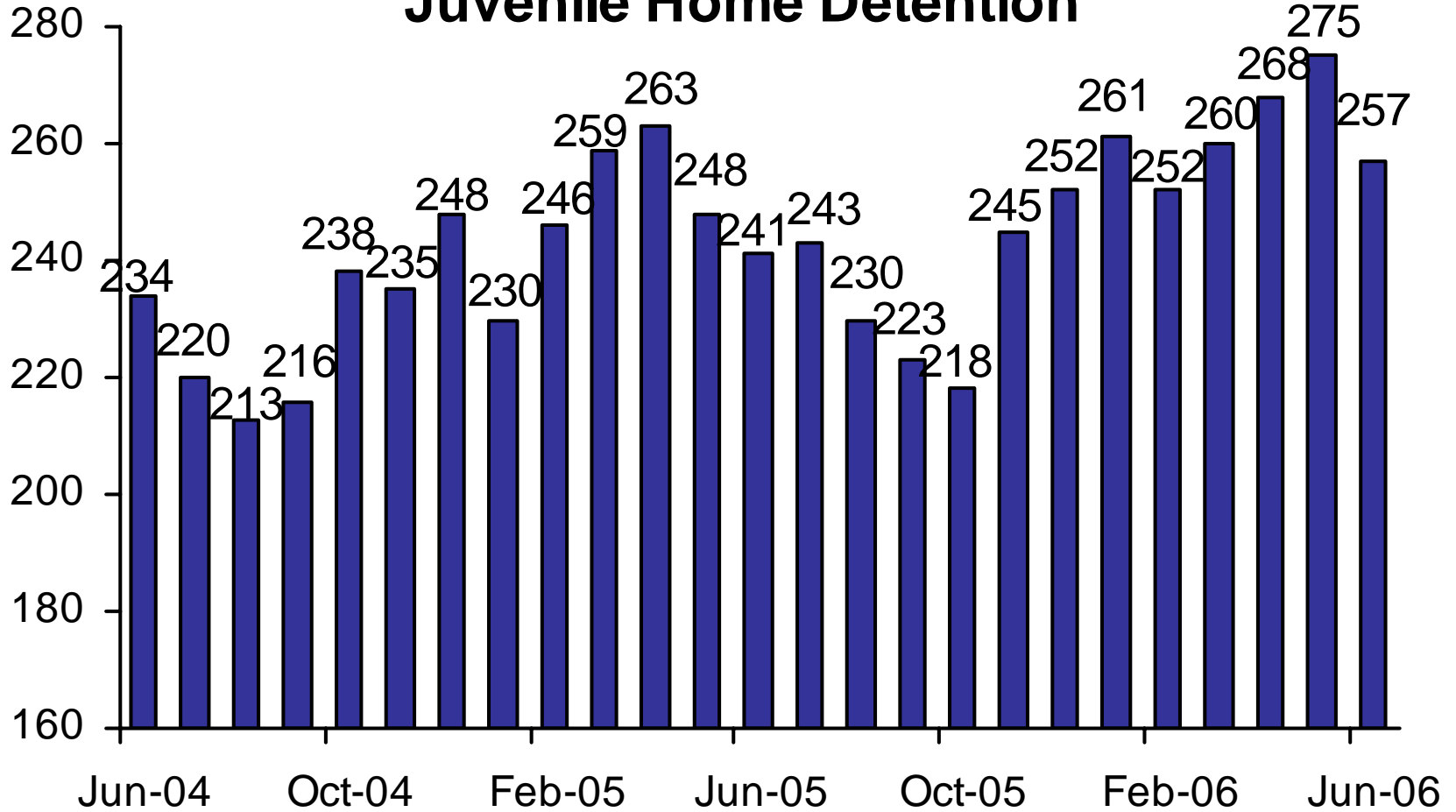


Juvenile Electronic Monitoring



The increase beginning in October 2005 is due to more accurate data collection.

Juvenile Home Detention



Juvenile Probation

■ # on standard probation ■ # on intensive probation

