



## Monthly Performance Report for March 2005

Monthly Averages						
	FY 2001	FY 2002	FY 2003	FY 2004	FY 2005 to-date	Mar. 2005
<b>Sheriff's Office</b>						
Bookings	9,614	9,641	9,875	10,176	9,887	<b>10,280</b>
Average Daily Population	7,059	7,557	8,044	8,657	8,955	<b>8,998</b>
Avg Length of Stay (in days)	22.4	23.8	24.4	26.0	27.6	<b>27.1</b>
<b>Superior Court</b>						
Filings	2,342	2,515	2,904	3,062	2,867	<b>3,711</b>
Terminations	2,259	2,367	2,330	2,612	2,739	<b>3,172</b>
Clearance Rate	96%	94%	80%	85%	96.2%	<b>85.5%</b>
Active Pending Inventory	7,990	7,419	8,123	9,106	9,895	<b>10,027</b>
Trials Completed	69	61	59	42	52	<b>66</b>
Trial Rate	2.9%	2.4%	2%	1.4%	1.8%	<b>1.8%</b>
<b>Adult Probation</b>						
Pretrial General Supervision	544	609	700	974	1,002	<b>976</b>
Pretrial Intensive Supervision	362	356	331	672	812	<b>770</b>
Pretrial Electronic Monitoring	51	78	97	154	160	<b>162</b>
Standard Probation Supervision	22,788	23,582	23,371	21,939	22,751	<b>22,936</b>
Intensive Probation Supervision	1,666	1,564	1,267	1,048	1,467	<b>1,450</b>
<b>Juvenile Probation and Detention</b>						
Avg Daily Detention Pop	400	407	401	431	438	<b>479</b>
Avg Length of Stay (in days)	14.1	14.7	15.1	16.6	18.7	<b>19.8</b>

### Criminal Justice System News

**Adult Incarceration:** Bookings increased by nearly 1,000 from February (9,291) to March (10,280). As it has since December, the average daily population rose slightly for all populations. The pretrial population increased to 5,657 in March from 5,623 in February; the sentenced population increased to 2,811 from 2,767; finally, agency holds increased to 476 from 467. The overall average daily population in March (8,998) is the highest seen since October 2004 (9,218).

The overall average length of jail stay increased from 26.84 days in February to 27.13 days in March.

**Filings & Case Processing:** March filings into Superior Court were the most seen in at least seven years. Terminations were also at their highest levels in at least seven years. RCC Direct Filings rose from 1,580 in February to 1,928 in March, while EDC/Direct Complaints increased from 900 to 1,336. March's active pending inventory of 10,027 is the highest since August 2004 while arraignment levels are the highest since at least March 1998. The number of trials completed in March (66) is the most seen since February 2003 (92).

**Adult Probation:** Pretrial numbers for general supervision, intensive supervision, and electronic monitoring all decreased slightly in March. However, the FY-to-date numbers are all higher than in past fiscal years.

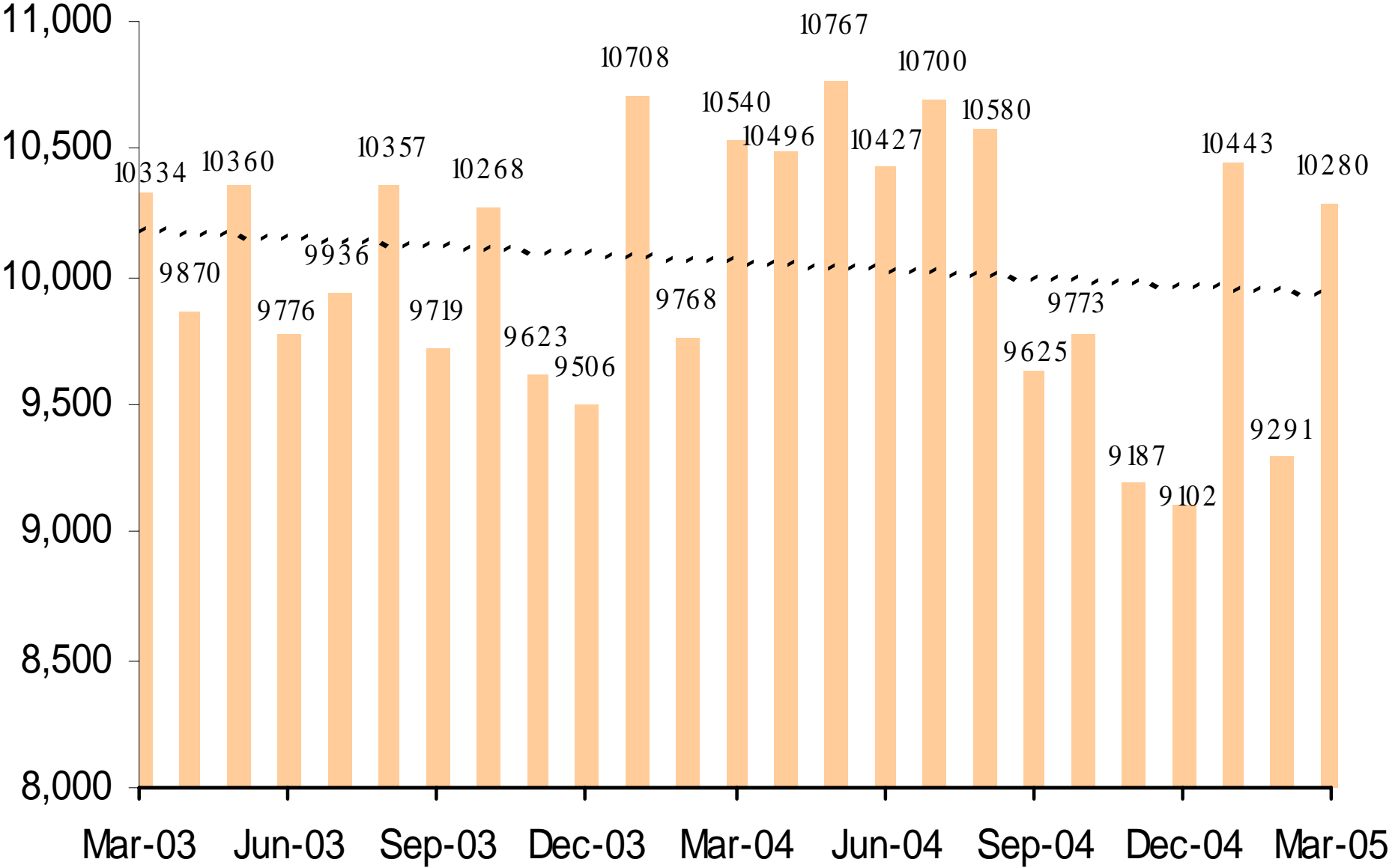
Levels of standard probation supervision increased slightly from 22,919 in February to 22,936 in March. Intensive probation supervision decreased in March (1,450) to the lowest levels since August 2004 (1,430).

**Juvenile Detention:** The average daily population increased from 451 in February to 479 in March; this is the largest population since February 2004. After a dip in February, the March average length of stay increased to a level very near the January level. Home detention also increased in March to 259. This is the highest seen since May 2000.

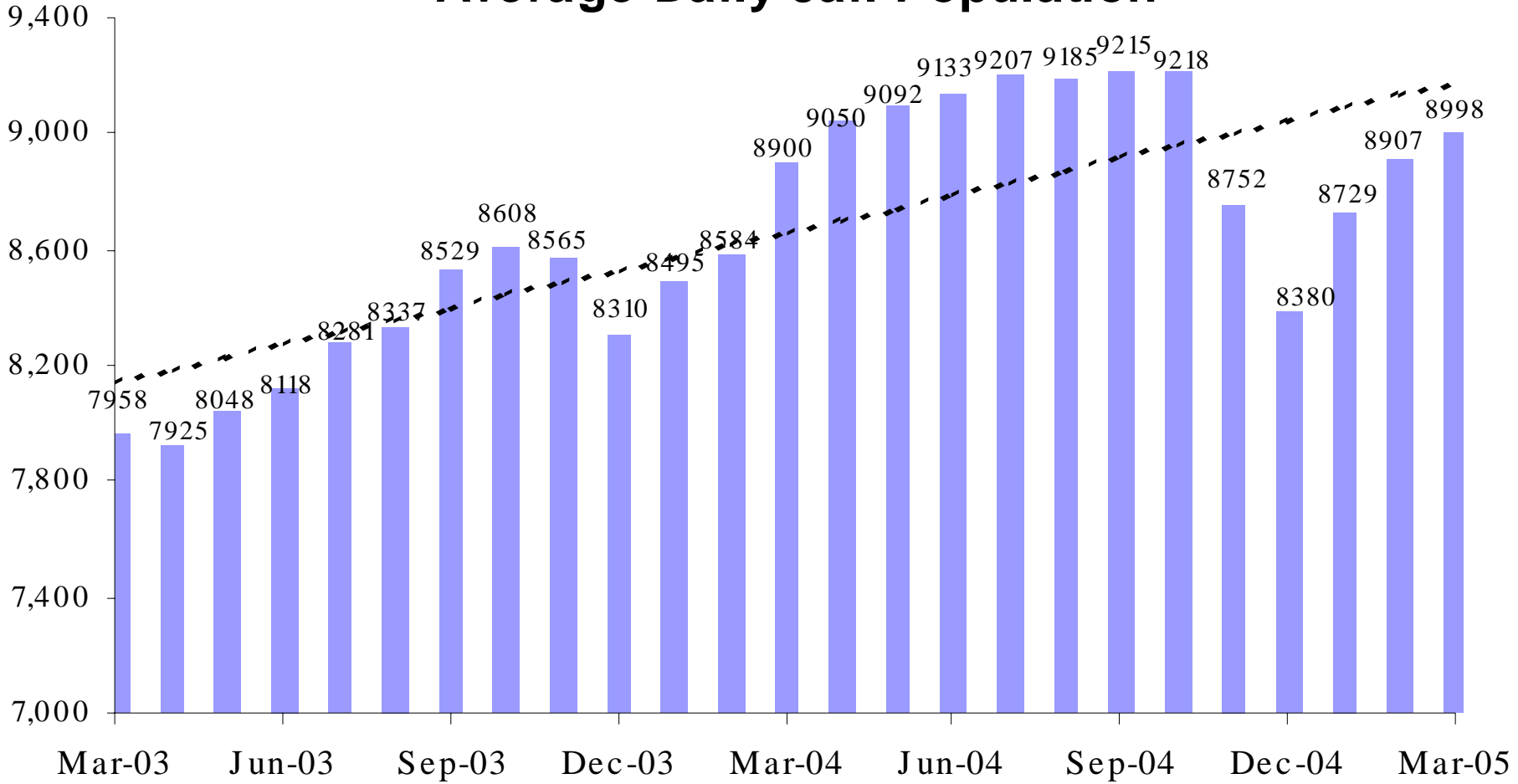
A criminal justice system-wide goal is to enhance the utility and timeliness of management information on case processing, in an effort to help agencies effectively address current events. An interagency committee of McJustice meets regularly to accomplish this and develop this report. **Input from readers is welcomed.** Please contact Amy Rex at [rexa@mail.maricopa.gov](mailto:rexa@mail.maricopa.gov) or 602-506-1310.

\*\*\*For recipients outside the County e-mail system\*\*\*  
This report is now available on-line. Please contact Amy Rex at [rexa@mail.maricopa.gov](mailto:rexa@mail.maricopa.gov) if you are interested in receiving an on-line version instead of a hard copy. Thank you for helping to protect our resources!

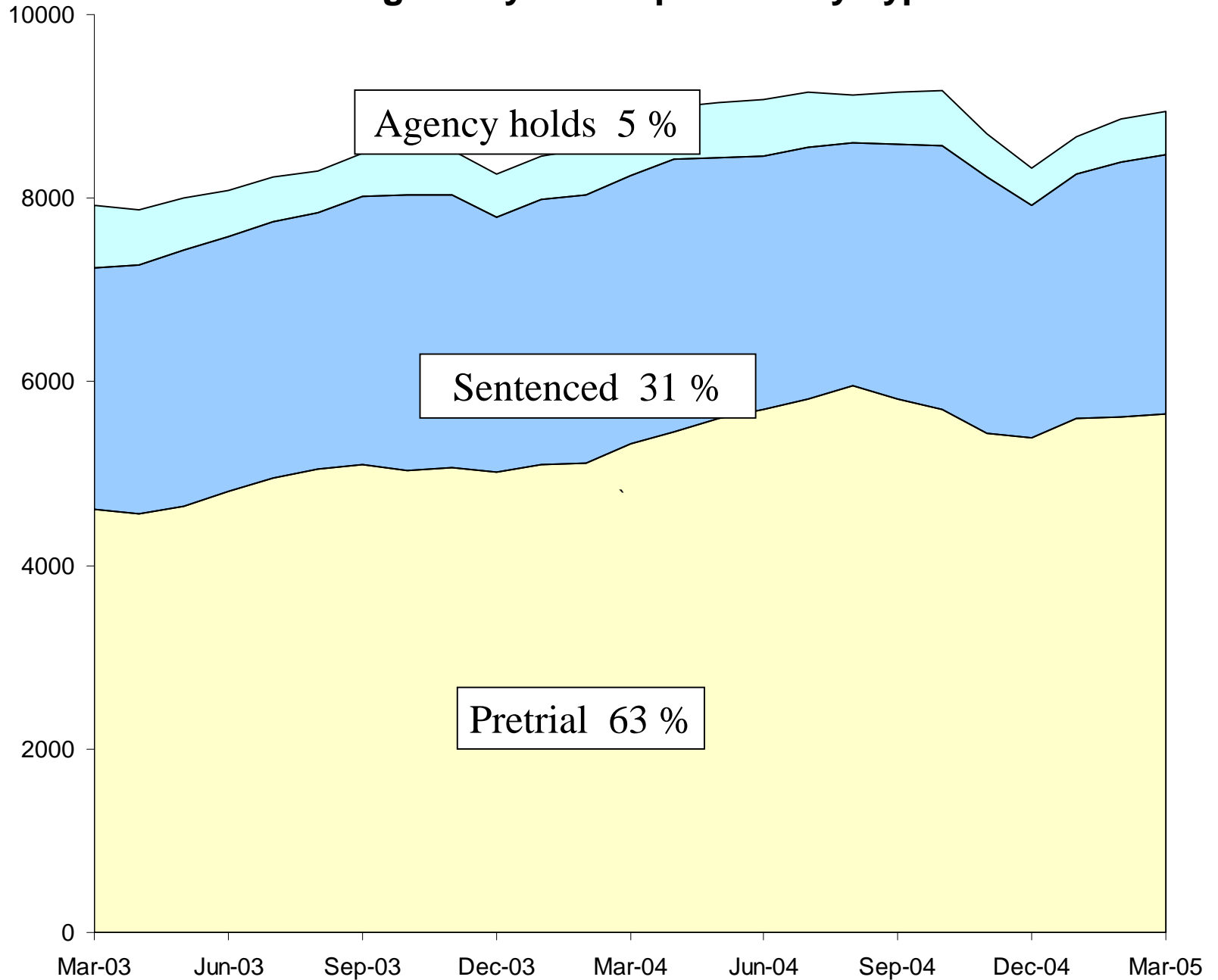
# Jail Bookings



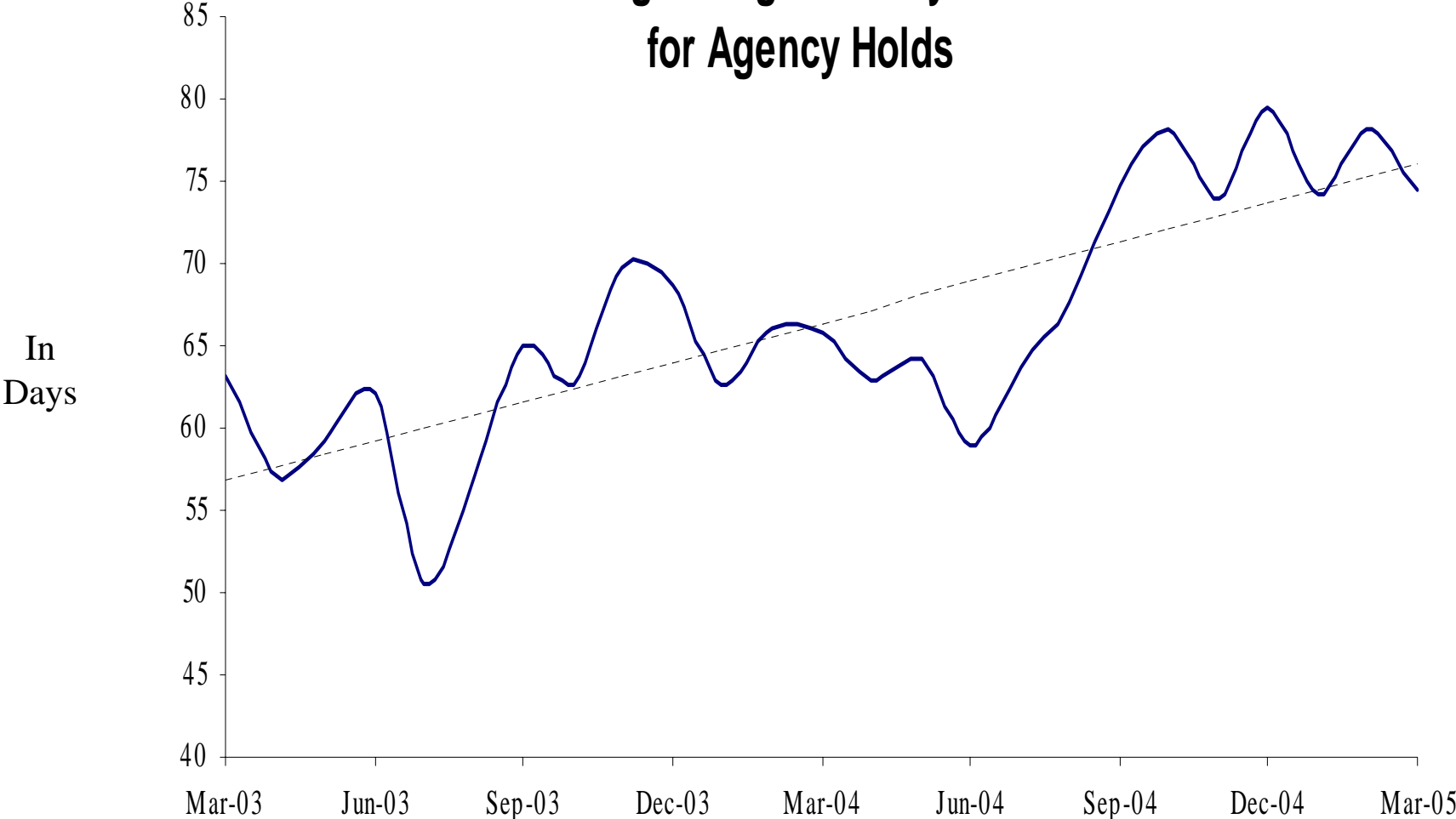
# Average Daily Jail Population



# Average Daily Jail Population by Type

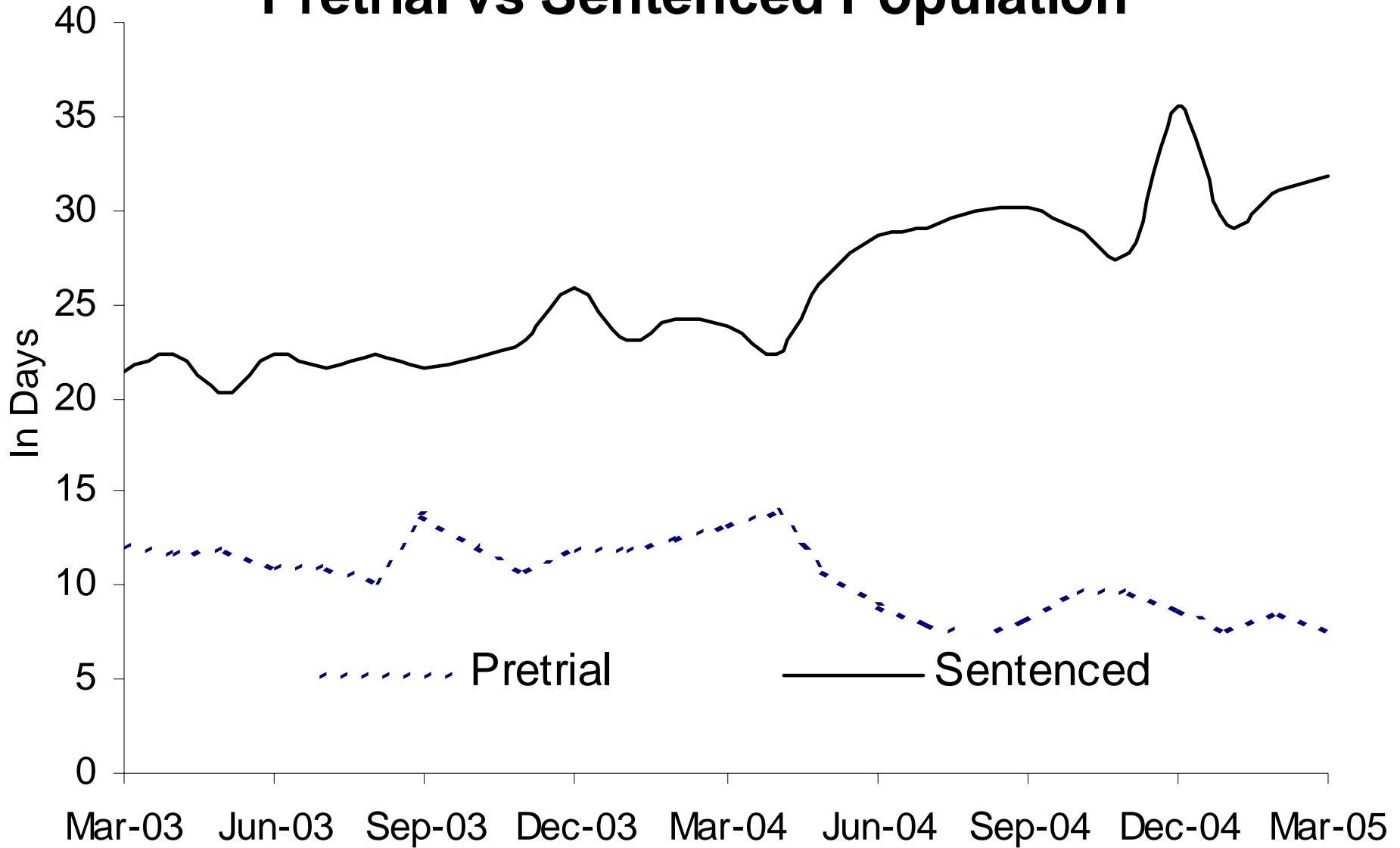


# Average Length of Stay in Jail for Agency Holds

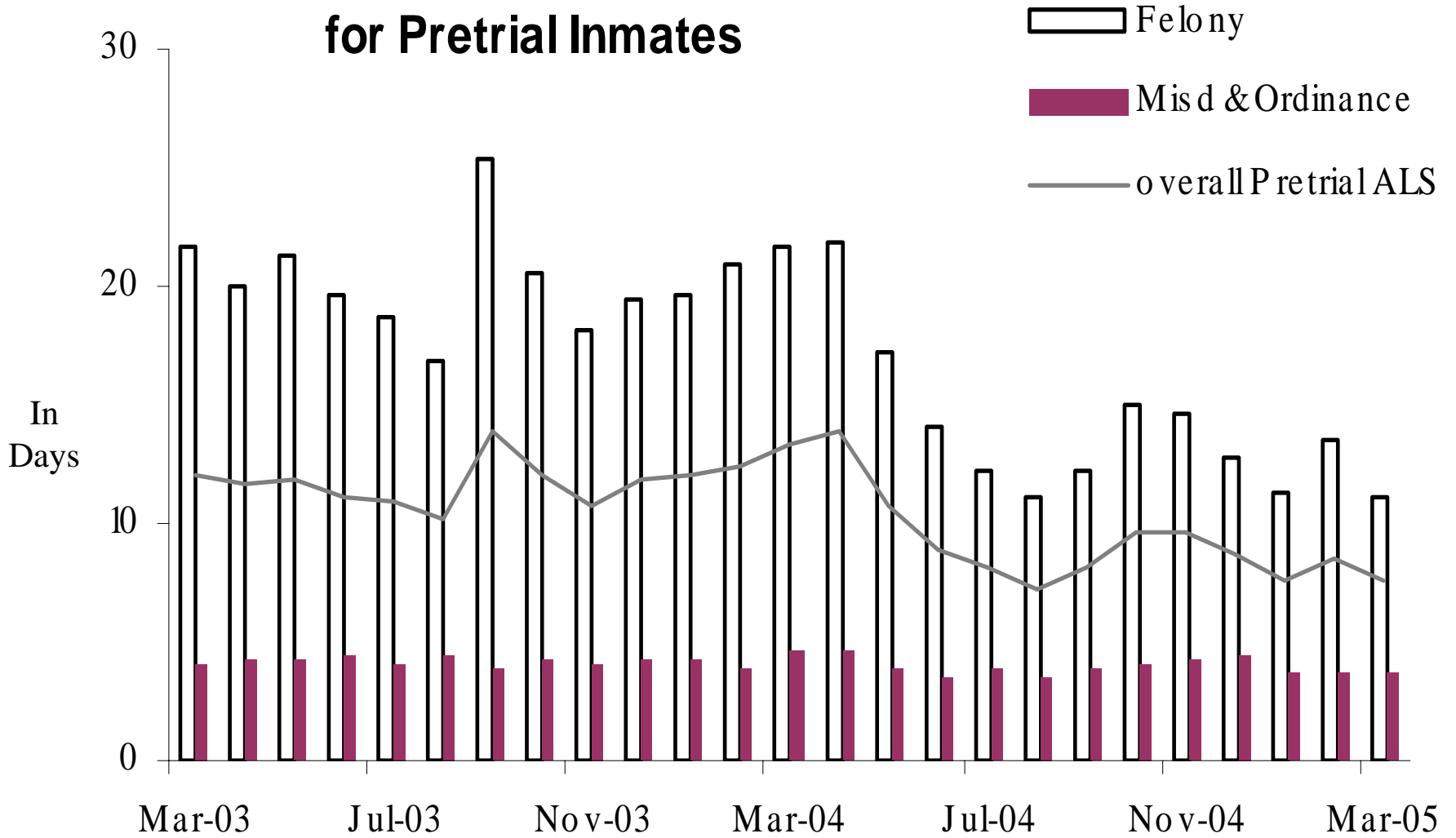


72% Dept of Corrections, 16% Federal agencies, 13% other

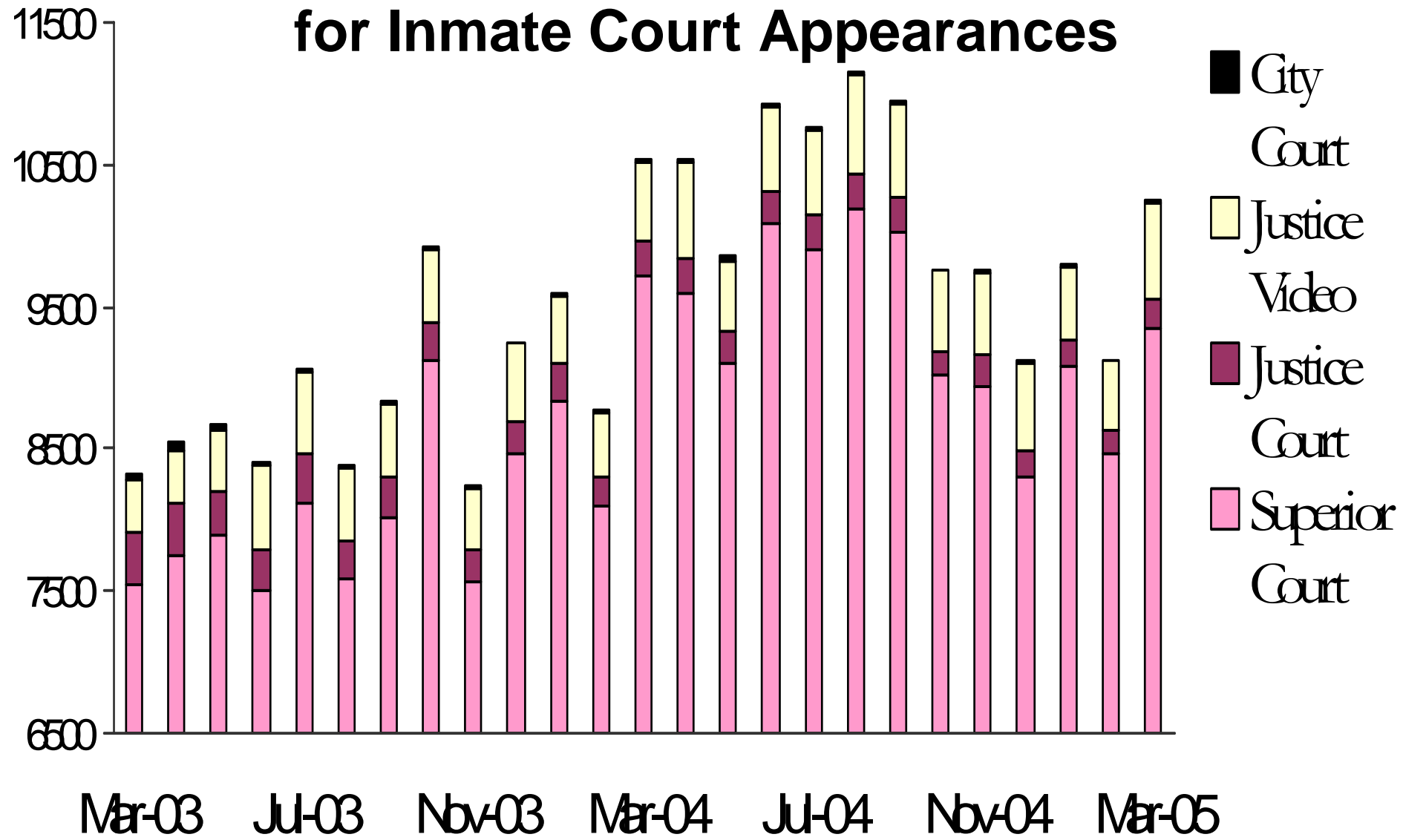
# Average Length of Stay in Jail Pretrial vs Sentenced Population



# Average Length of Stay in Jail for Pretrial Inmates



# Sheriff's Office Transports for Inmate Court Appearances

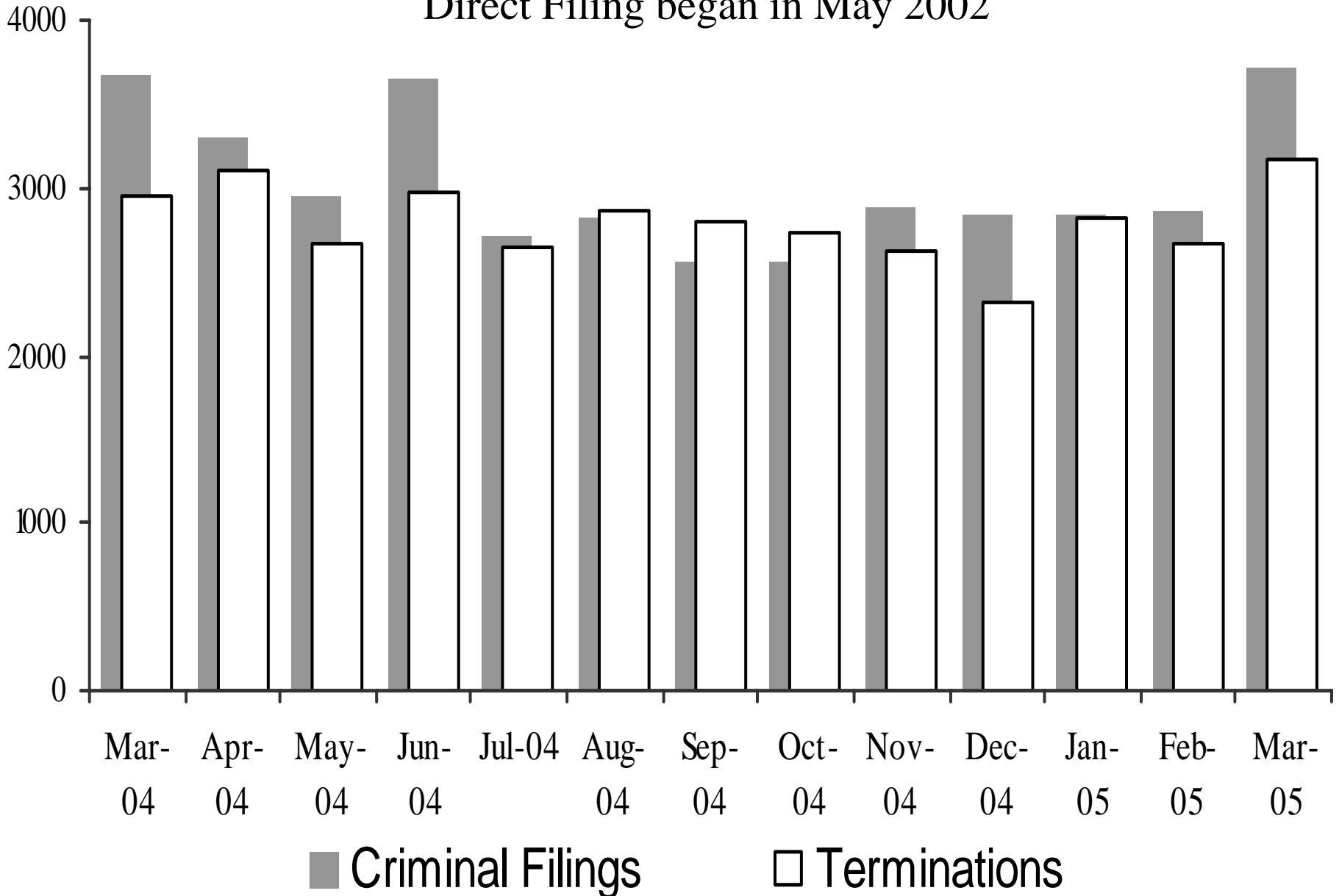


Since Direct Filing into Superior Court began May 2002, remaining transports to Justice Courts are for misdemeanor cases.

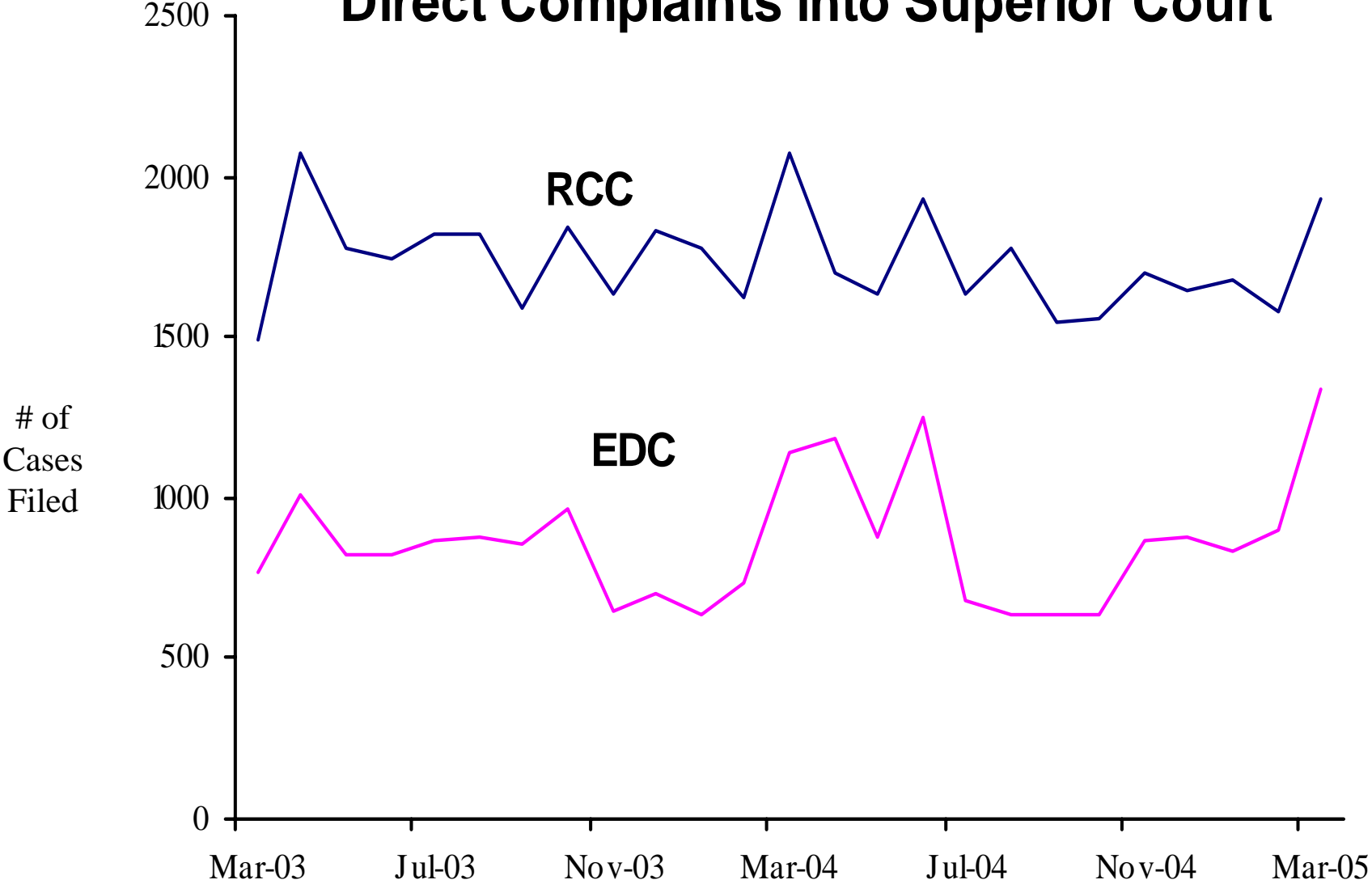


# Superior Court Filings and Terminations

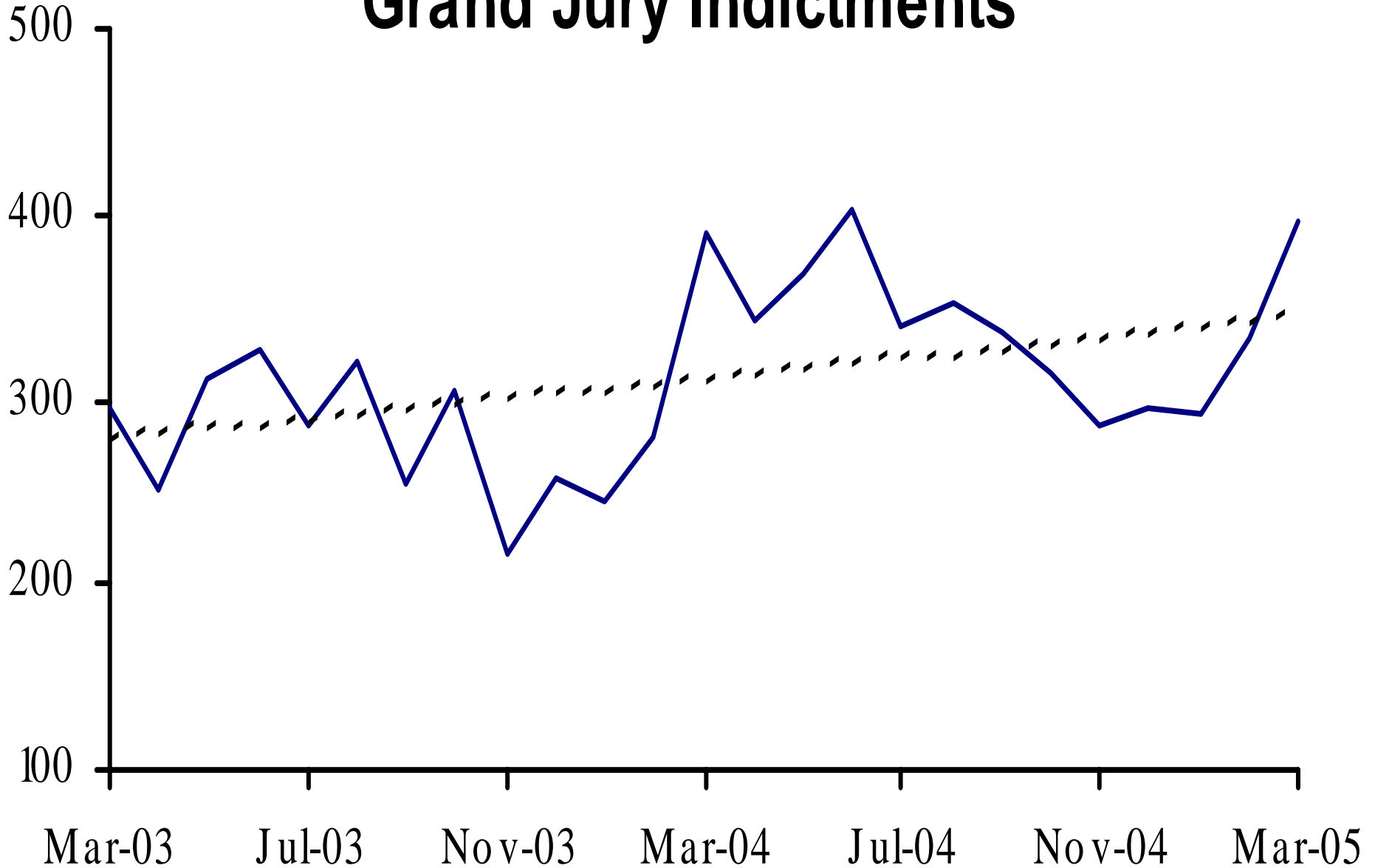
Direct Filing began in May 2002



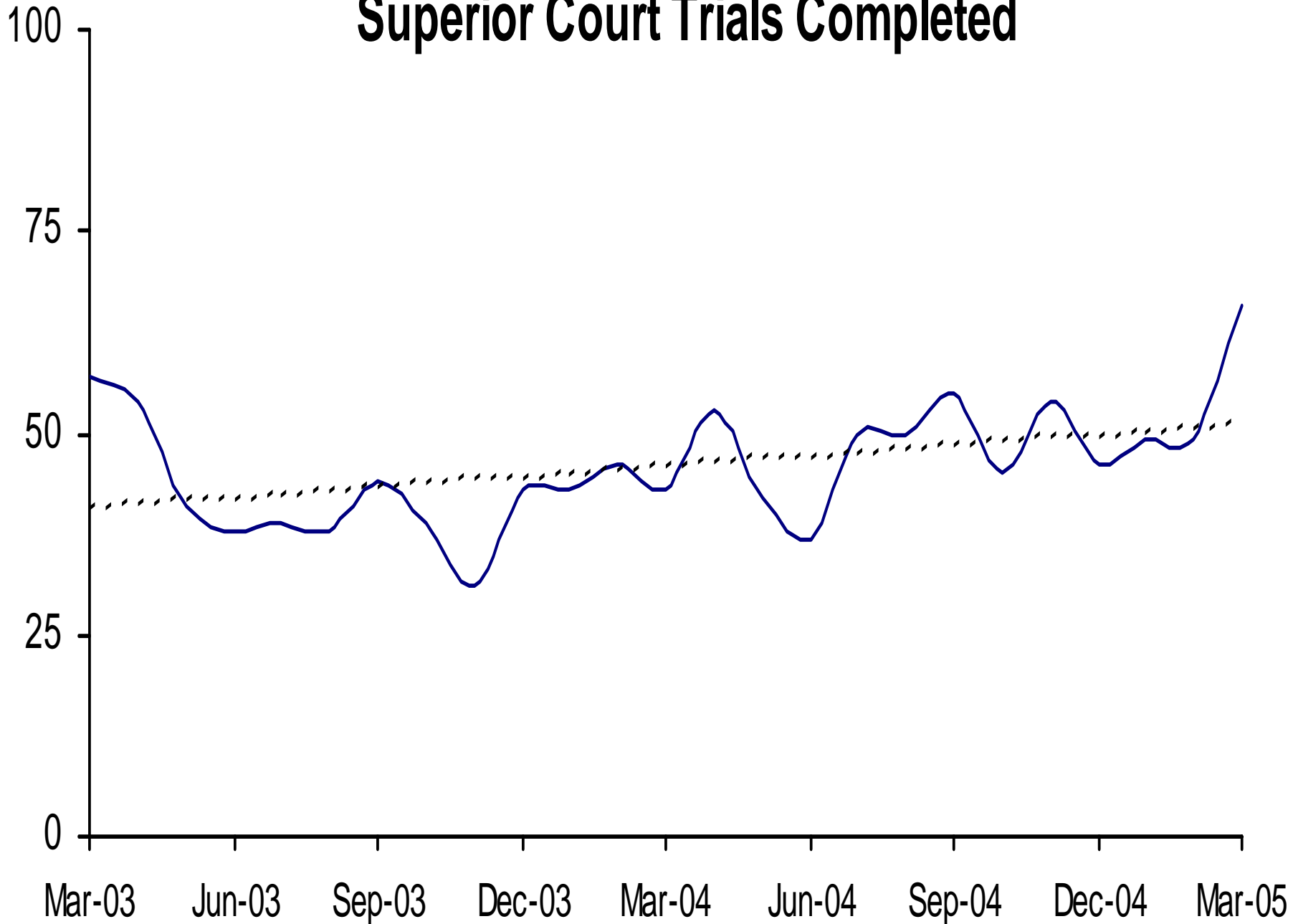
# Direct Complaints into Superior Court



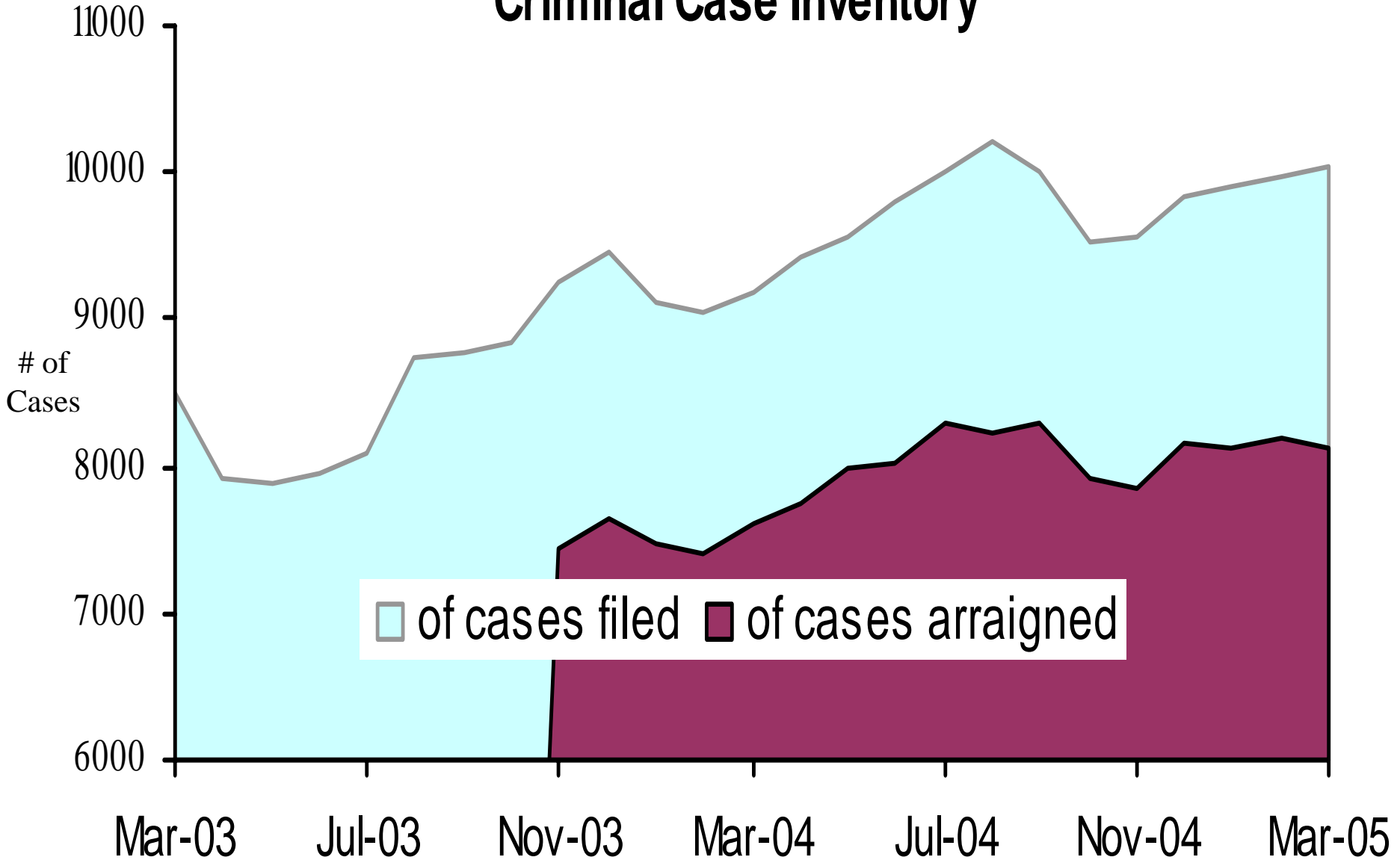
# Grand Jury Indictments



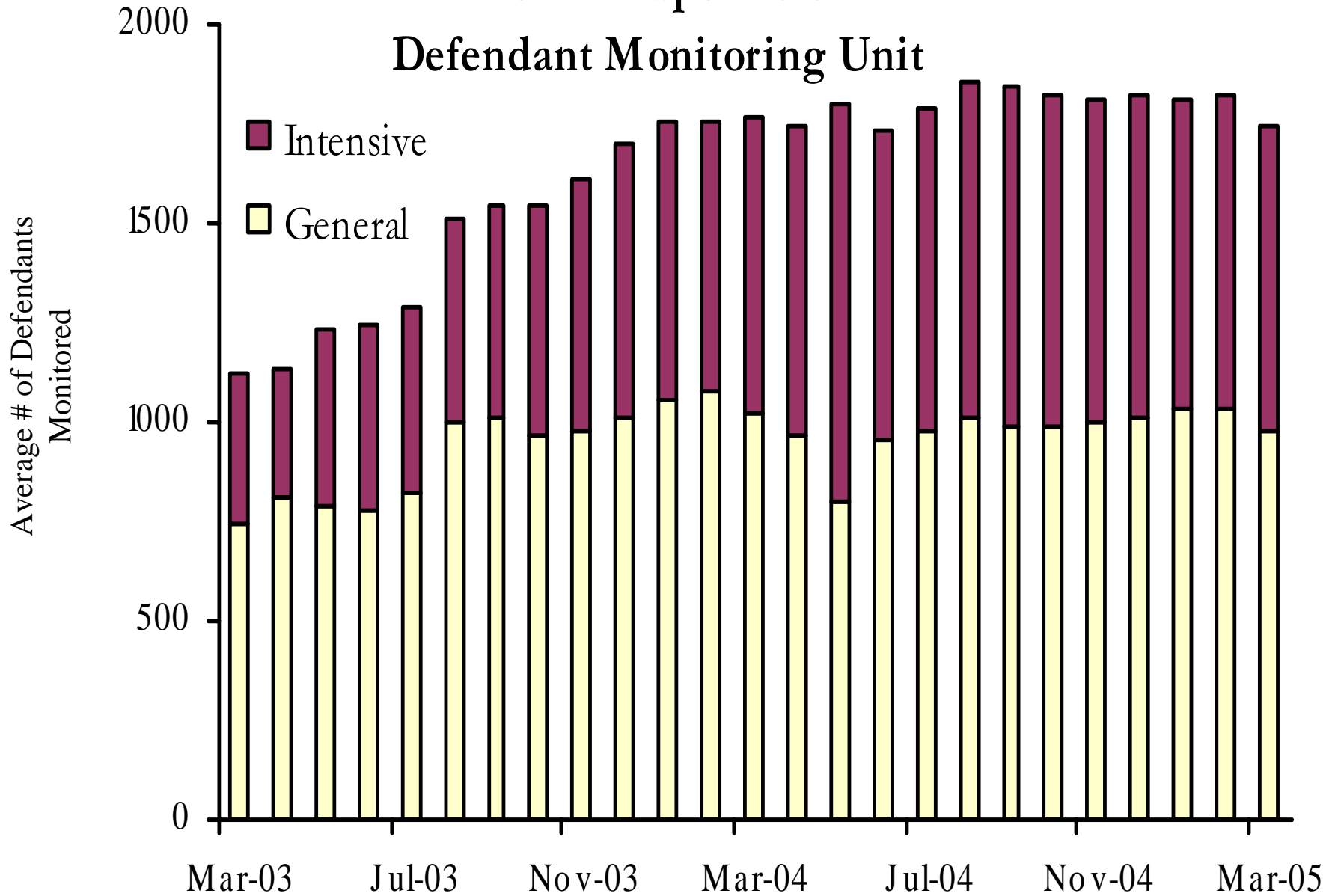
# Superior Court Trials Completed



# Active Pending Criminal Case Inventory

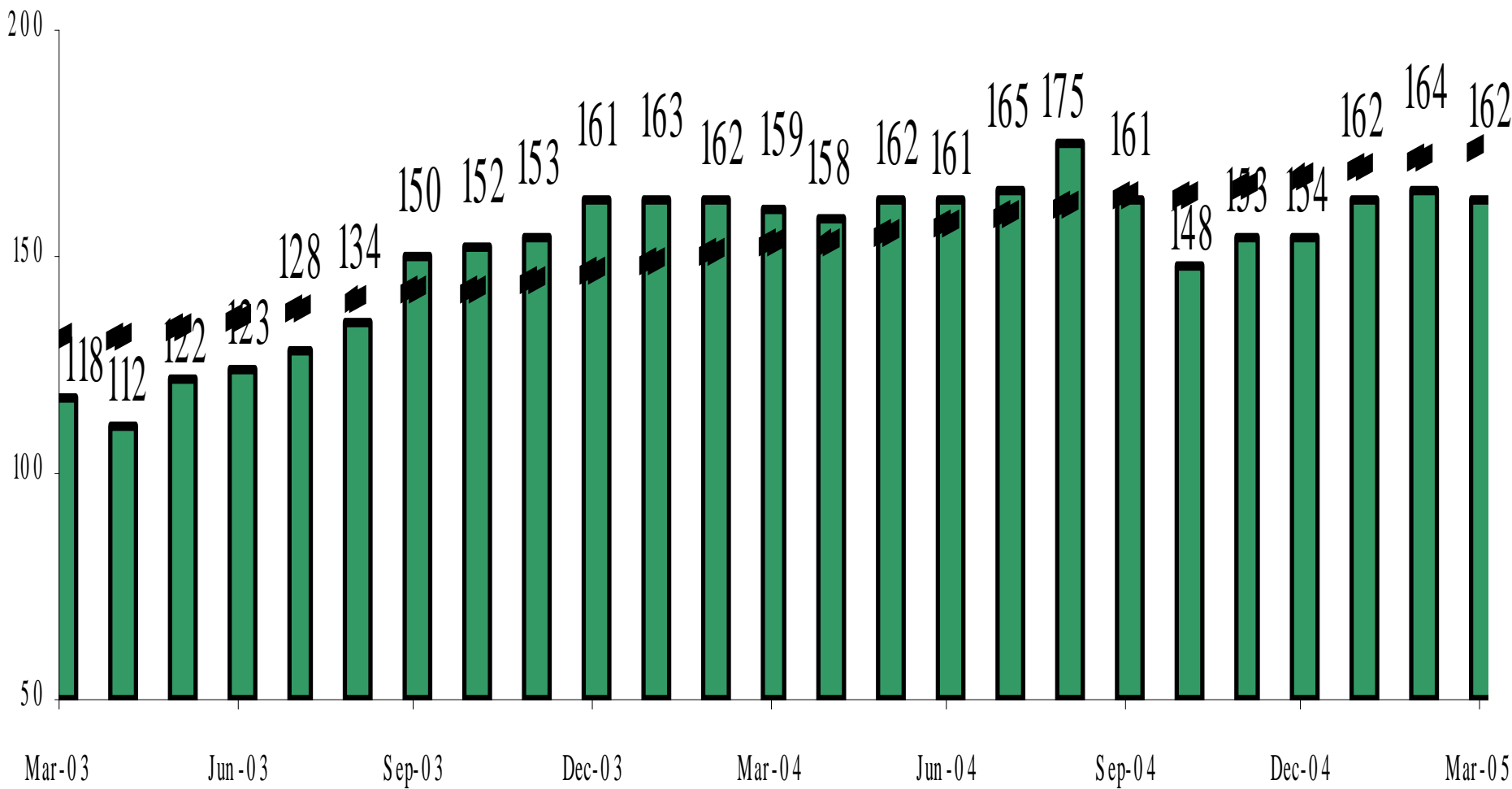


# Pretrial Supervision Defendant Monitoring Unit



# Pretrial Supervision

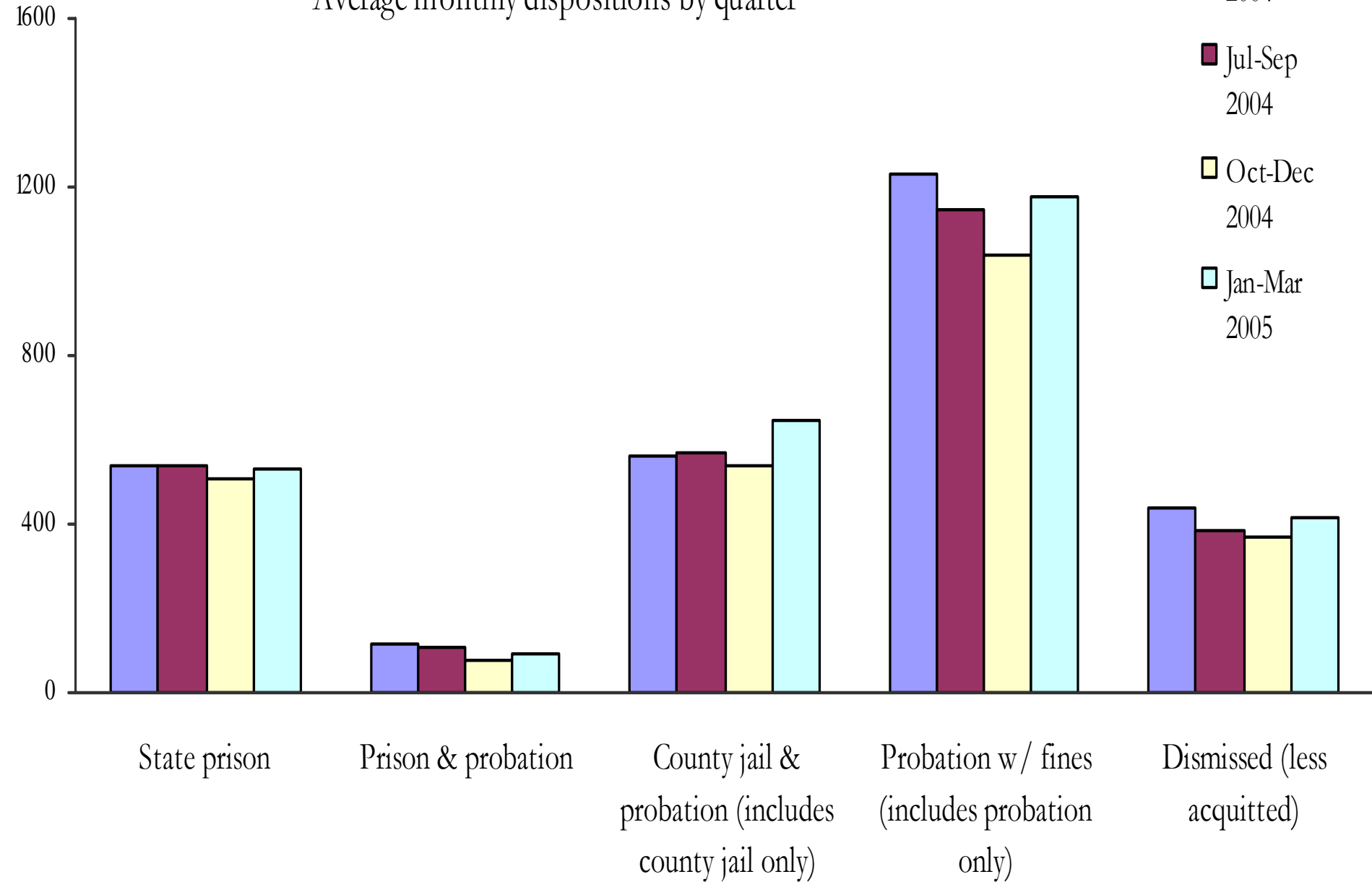
## Defendants on Electronic Monitoring



# Disposition of Cases Terminated

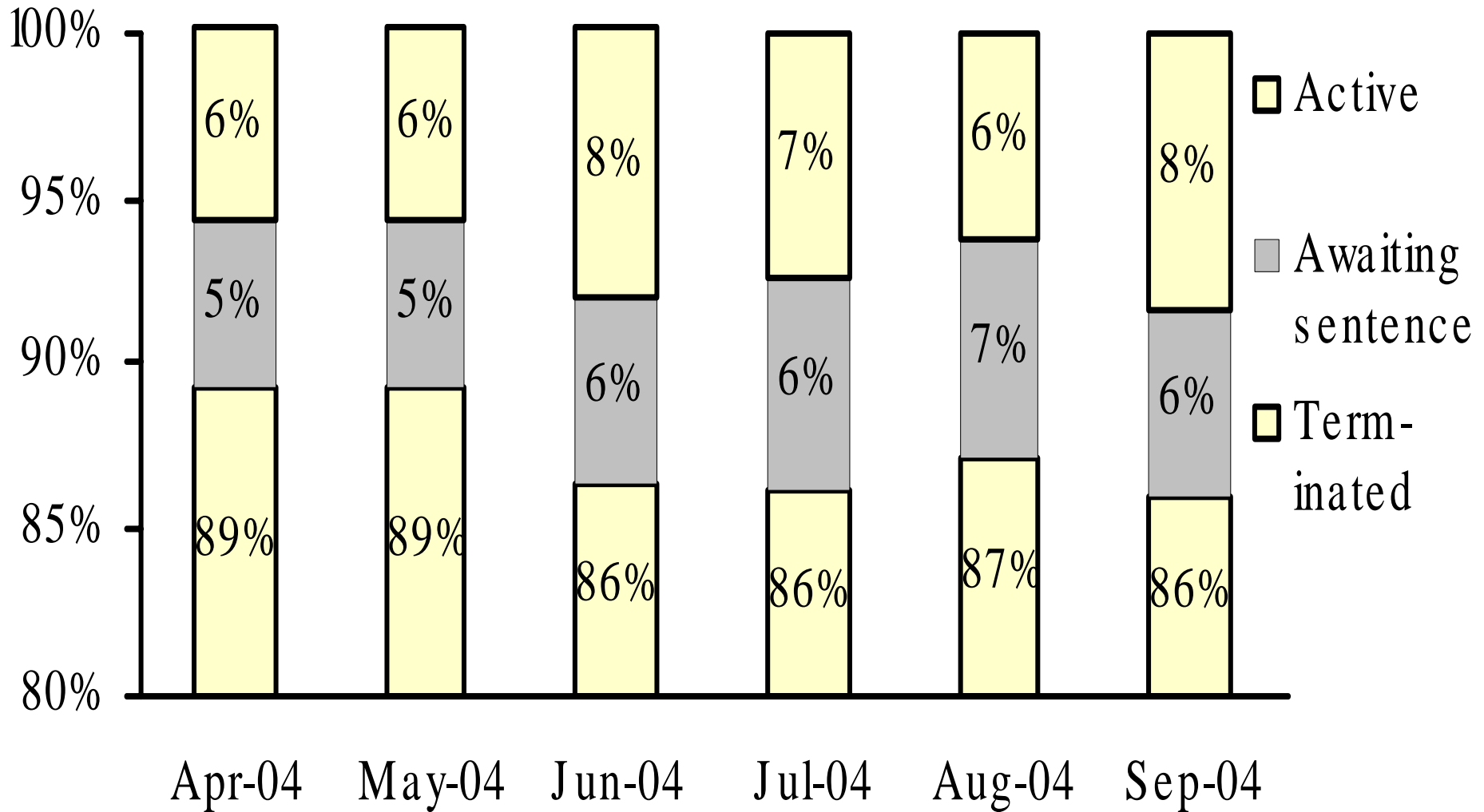
Average monthly dispositions by quarter

- Apr-Jun 2004
- Jul-Sep 2004
- Oct-Dec 2004
- Jan-Mar 2005

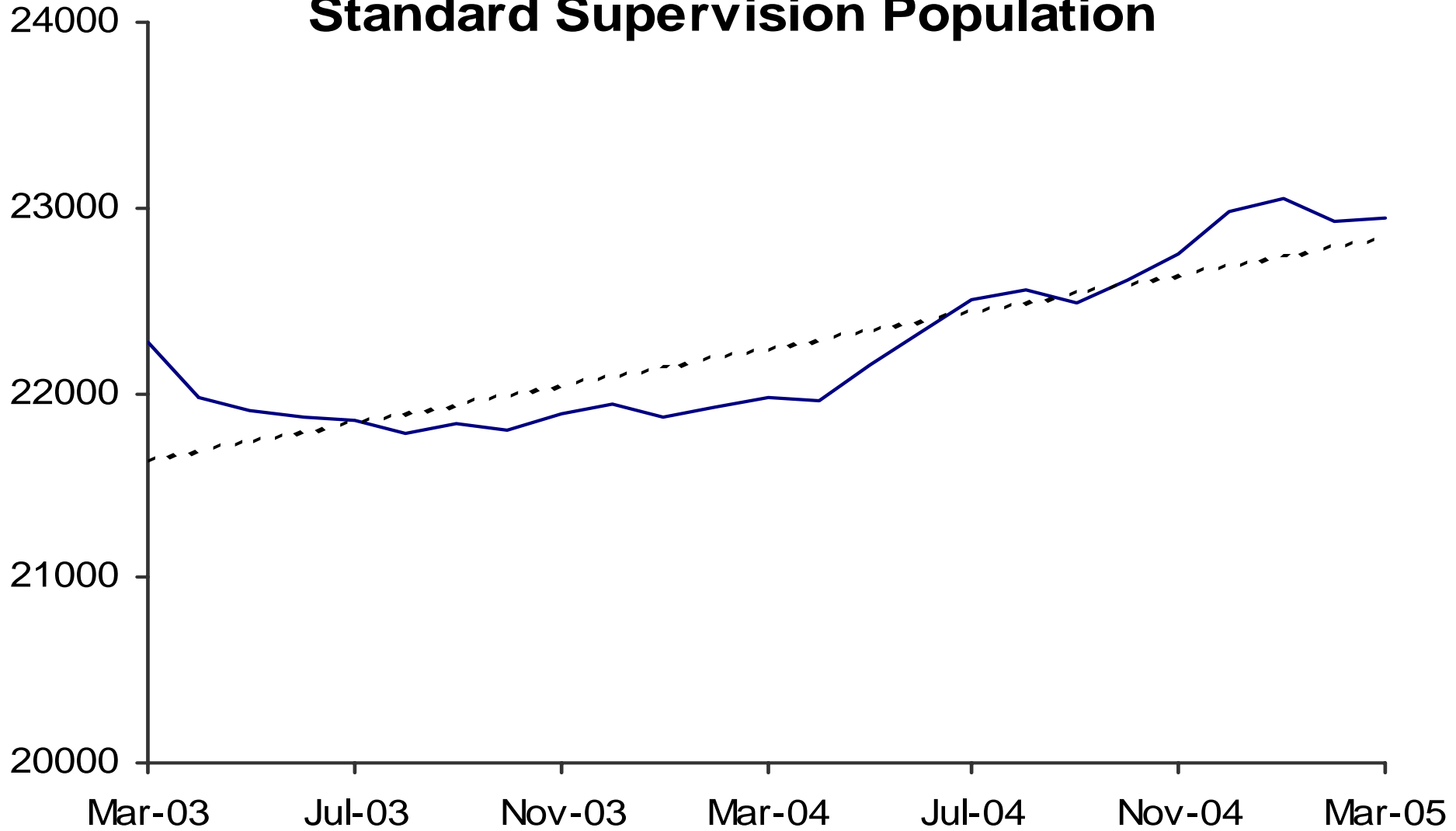




# Status of Cases After 180 Days

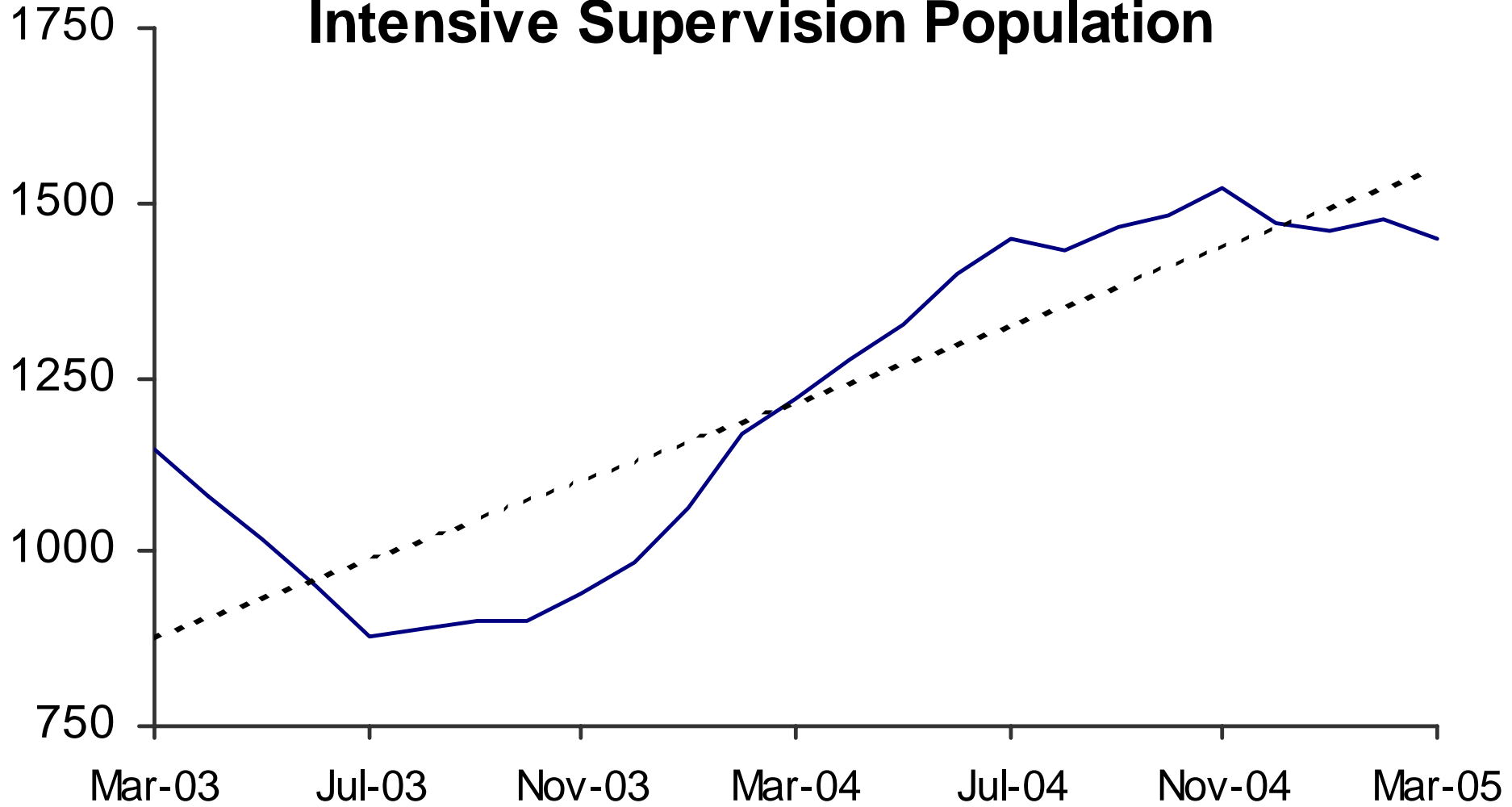


# Adult Probation Standard Supervision Population

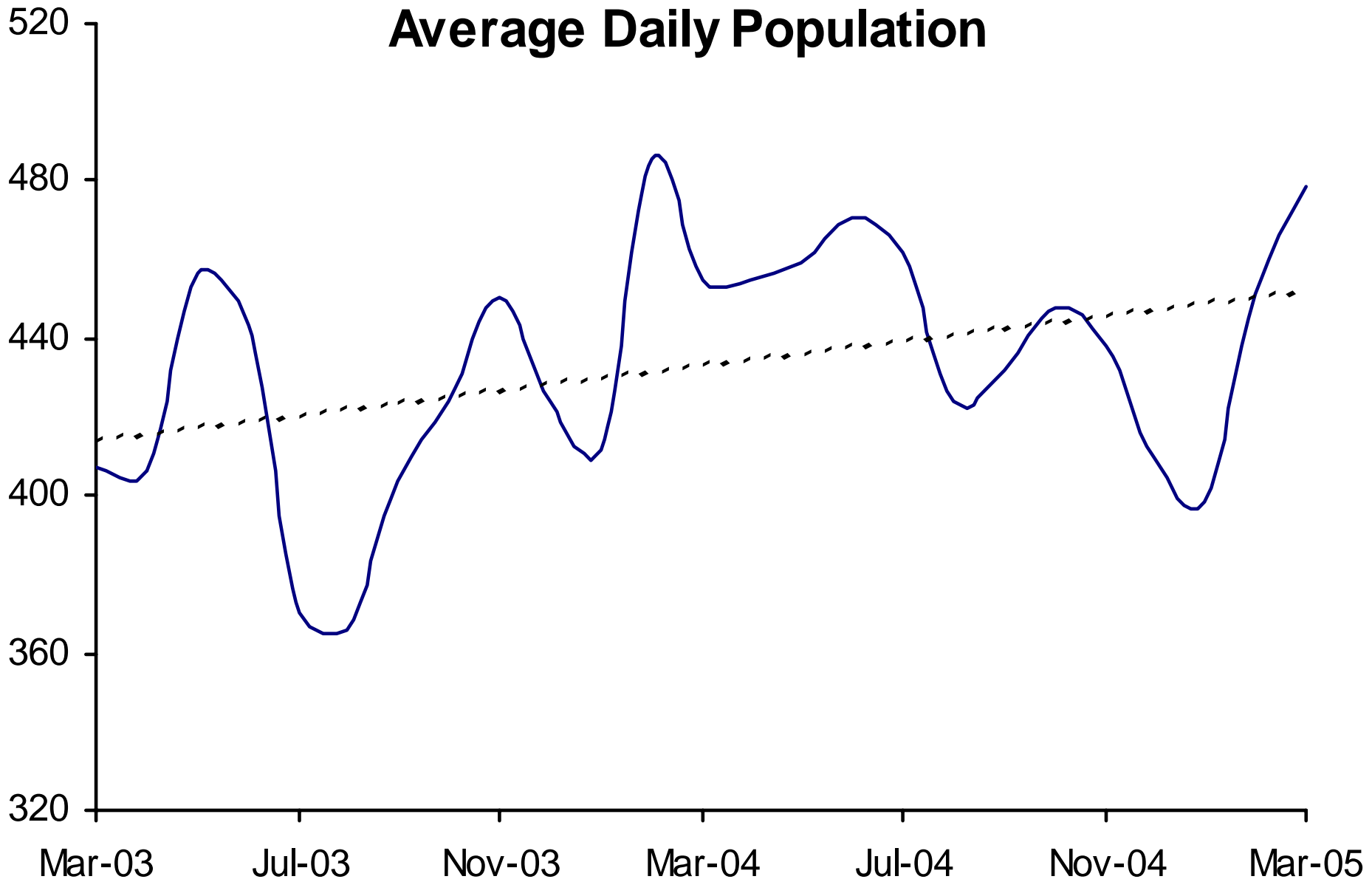


Interstate Compact and Report and Review caseloads are not included.

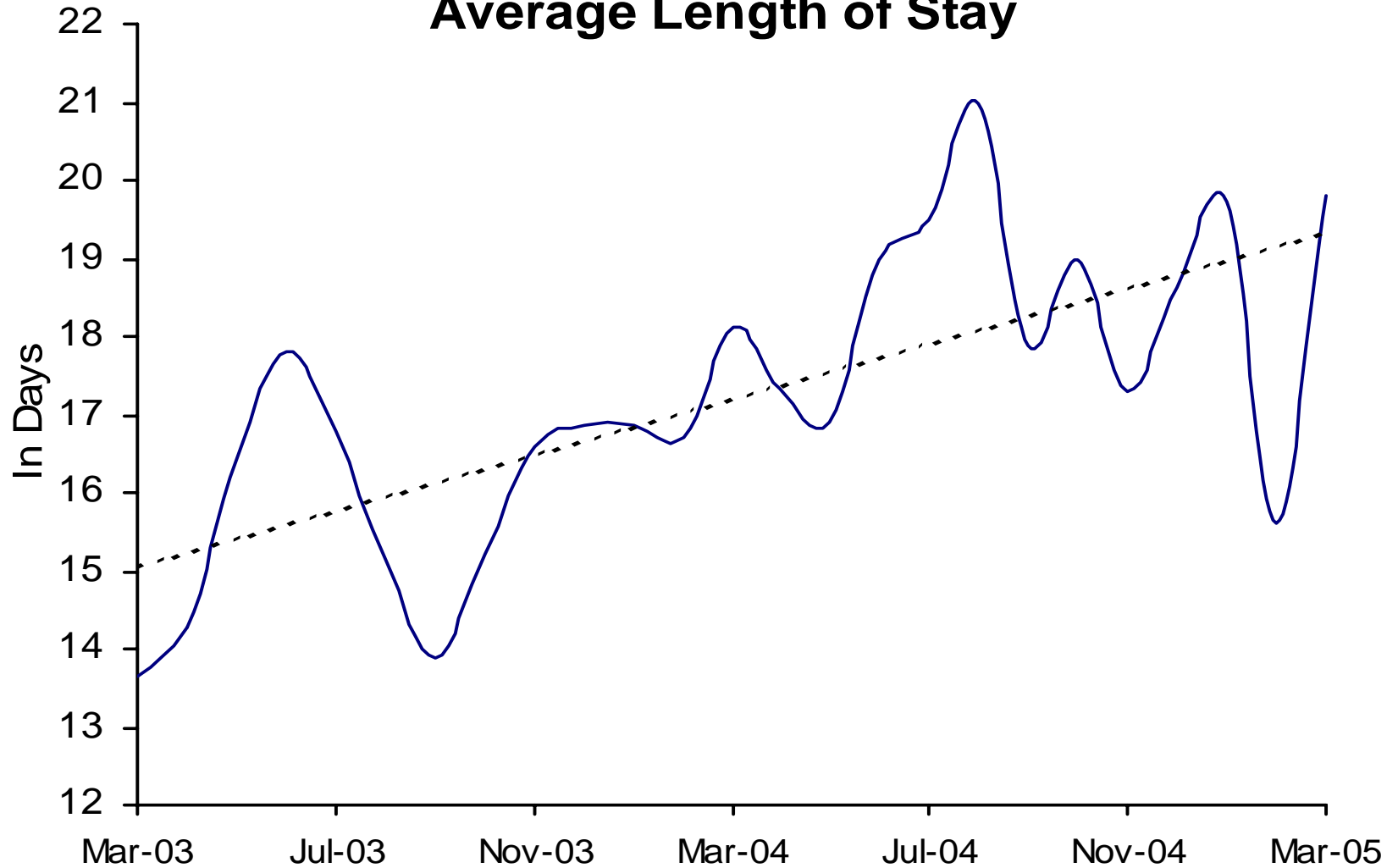
# Adult Probation Intensive Supervision Population



# Juvenile Detention Average Daily Population

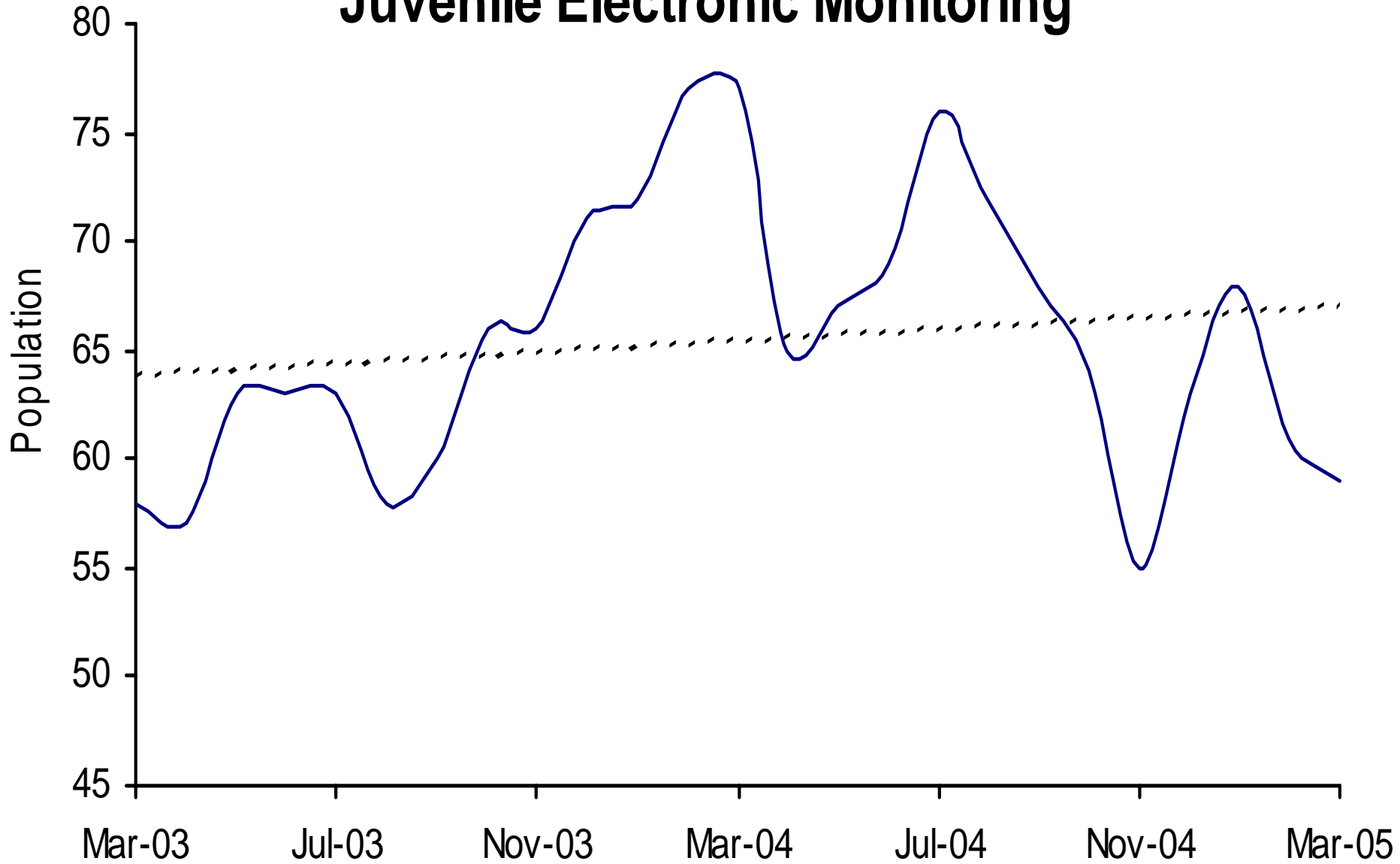


# Juvenile Detention Average Length of Stay



The average length of stay for January - May 2003 was recalculated based upon an improved methodology.

# Juvenile Electronic Monitoring



# Juvenile Home Detention

